

SPI-M-O

Medium-Term Projections

16th December 2020

SPI-M-O Medium-Term Projections

- **These projections are not forecasts or predictions.** They represent a scenario in which the trajectory of the epidemic continues to follow the trends that were seen in the data up to 14th December.
- Not all modelling groups produce projections for both hospitalisations and deaths. As a result, there will be some differences in the models that are included in the combined projections for each metric.
- Given the great uncertainty around the impacts on transmission of the forthcoming festive period and the new tiers system in England, these projections only cover the next three weeks instead of the usual six.
- **Projections that are made around the time of policy or behaviour change are much less likely to be accurate**, with the lagged nature of many data streams making it even more difficult to detect and interpret trends.
- **SPI-M has not produced consensus projections for Wales and Northern Ireland this week.** The recent strengthening of restrictions in both nations means current trends in hospital admission and deaths are likely to change within the next three weeks.

Metrics:

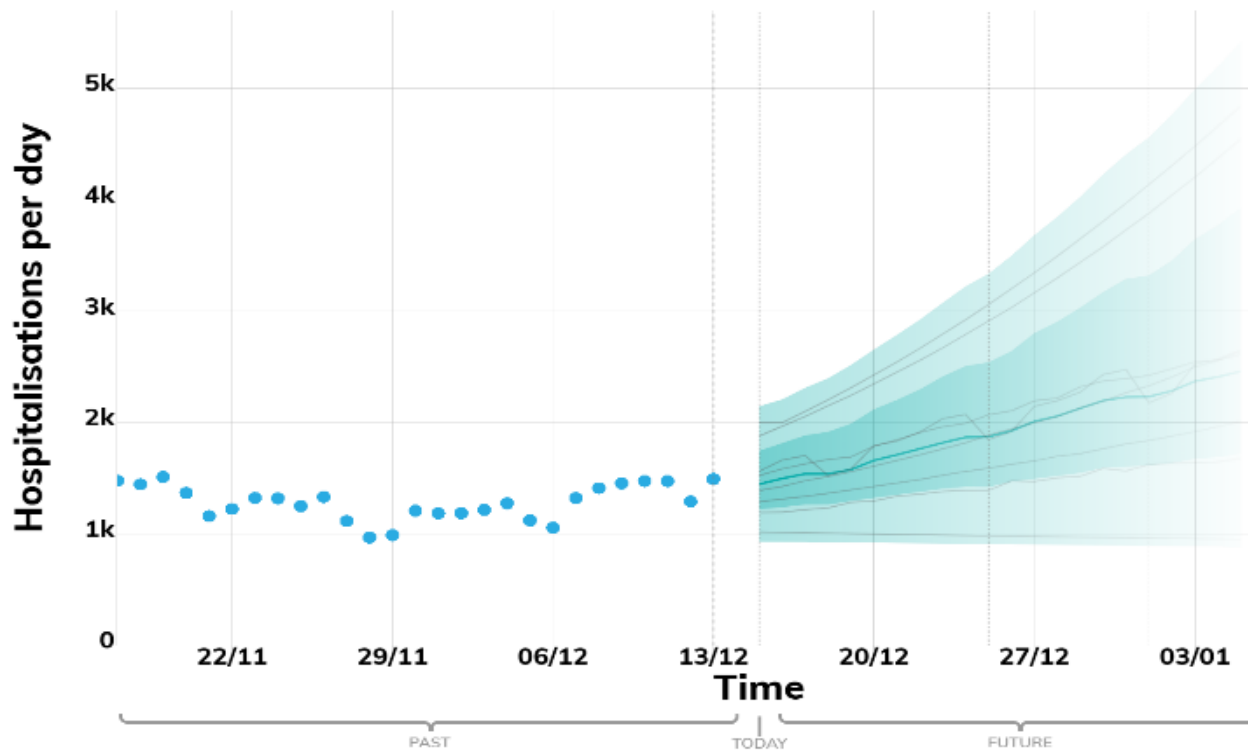
- **New hospitalisations per day:** Number of individuals admitted with COVID-19 and inpatients newly diagnosed with COVID-19. Data definitions differ slightly across all four nations.
- **New deaths per day (by date of death):** The number of COVID-19 deaths within 28 days of a positive test. Data definitions differ slightly across all four nations.

Modelled projections based on trends to 14th December 2020

New hospital admissions per day

These projections are based on current trends and cannot include the full impact of the implementation of the new tiers system in England. They are not forecasts or predictions.

ENGLAND



Key



These fan charts show the combined medium-term projections based on current trends. They cannot account for policy or behavioural changes in the two to three weeks prior to 14th December, as these will not yet have been reflected in epidemiological data.

These projections will not *fully* reflect recent increases in cases and admissions in England.

The projections cannot reflect the impact of the new system of tiers or any future policy or behaviour changes yet to be seen in the data.

Data notes:

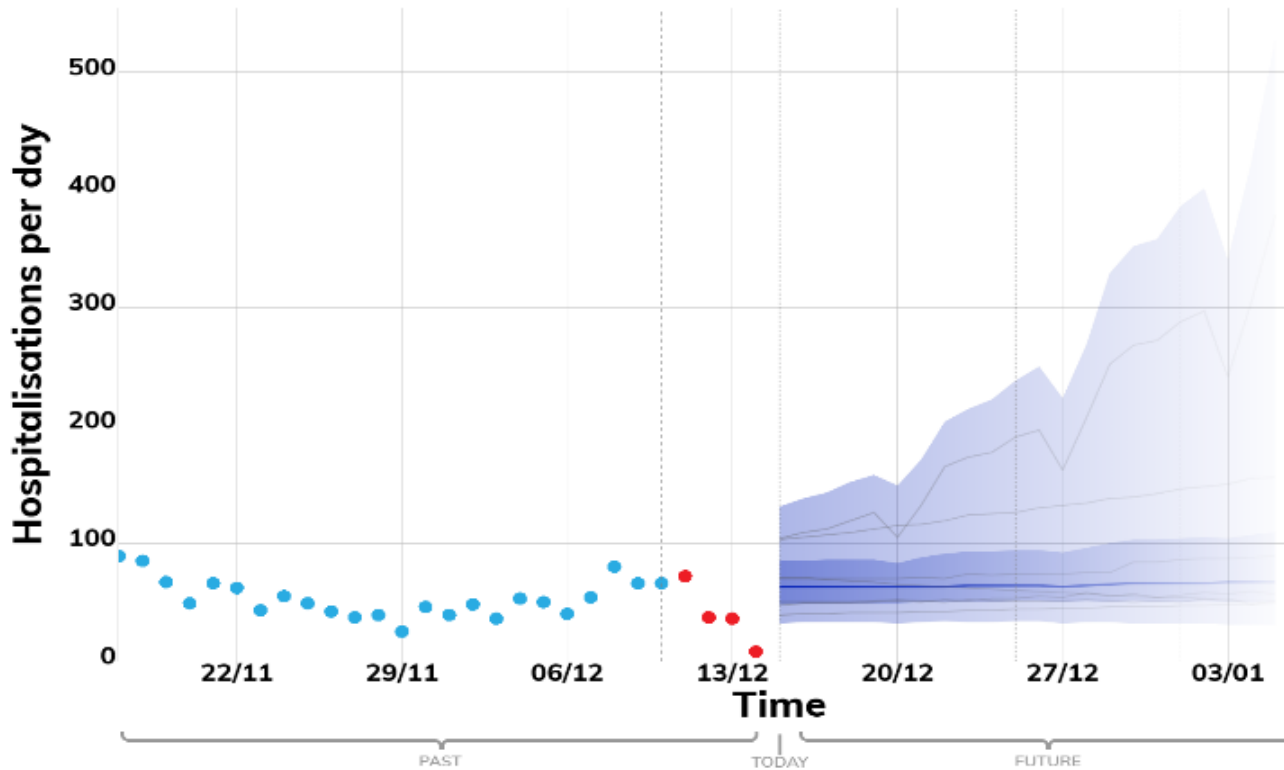
England: Number of patients admitted with confirmed COVID-19 and the number of inpatients diagnosed with COVID-19 in the past 24 hours. The past data is taken from the NHS England COVID-19 Sitreps.

Modelled projections based on trends to 14th December 2020

New hospital admissions per day

These projections are based on current trends and cannot include recent changes in policy or behaviour. They are not forecasts or predictions.

SCOTLAND



Key

- Real data
- Expected to Increase
- Projection midpoint
- High and low estimates 5th to 95th percentile
- High and low estimates 25th to 75th percentile
- Model predictions

These fan charts show the combined medium-term projections based on current trends. They cannot account for policy or behavioural changes in the two to three weeks prior to 14th December, as they will not yet be reflected in epidemiological data. **Nor can they reflect the impact of future policy or behavioural changes.**

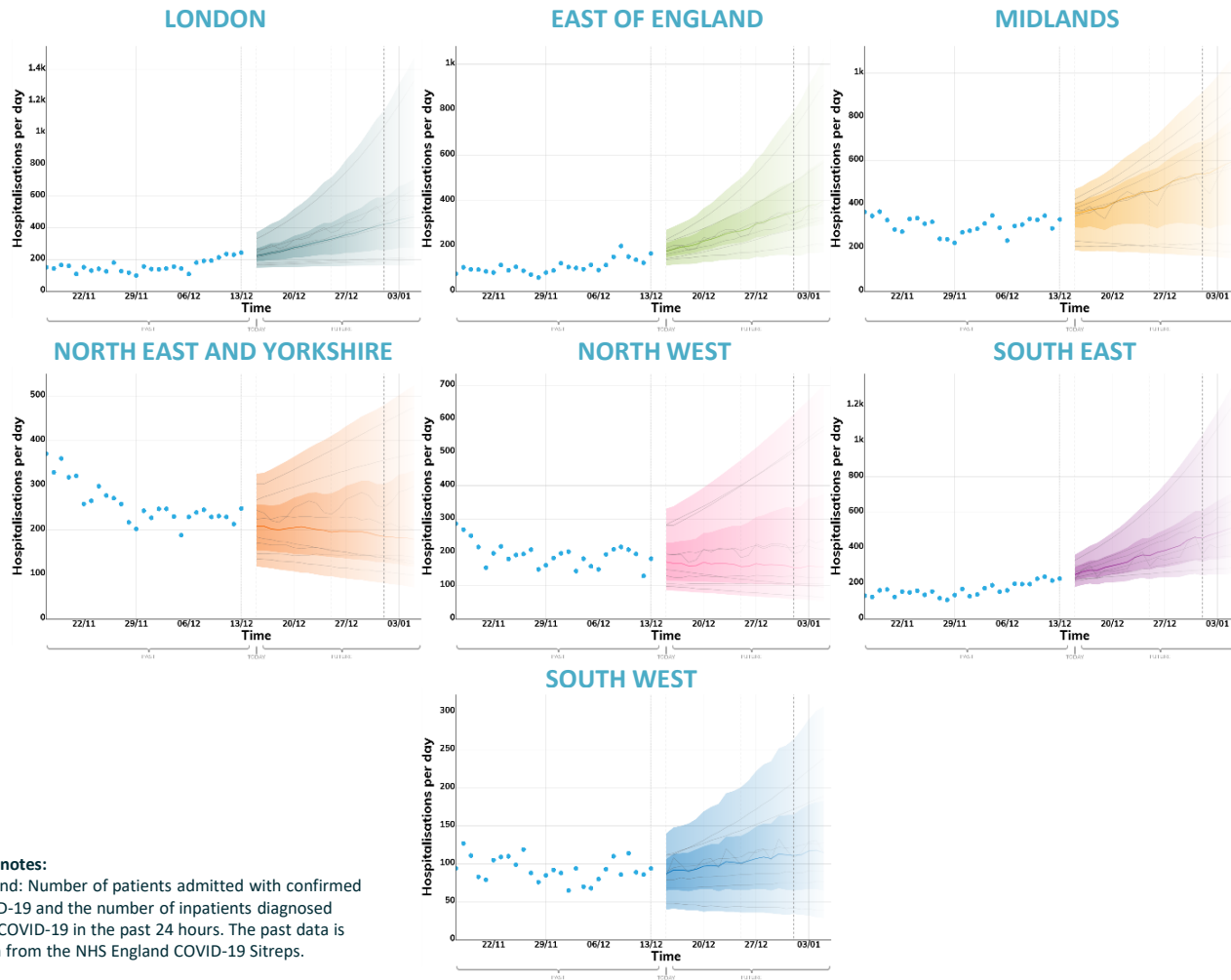
Data notes:

Number of patients admitted with confirmed COVID-19 and inpatients diagnosed with COVID-19 within 7 days of admission. The past data is provided by Public Health Scotland.

Modelled projections based on trends to 14th December 2020

New hospital admissions per day

These projections are based on current trends and cannot include the full impact of the implementation of the new tiers system in England. They are not forecasts or predictions.



Key



These fan charts show the combined medium-term projections based on current trends. They cannot account for policy or behavioural changes in the two to three weeks prior to 14th December, as these will not yet have been reflected in epidemiological data.

These projections will not *fully* reflect recent increases in cases and admissions in England.

The projections cannot reflect the impact of the new system of tiers or any future policy or behaviour changes yet to be seen in the data.

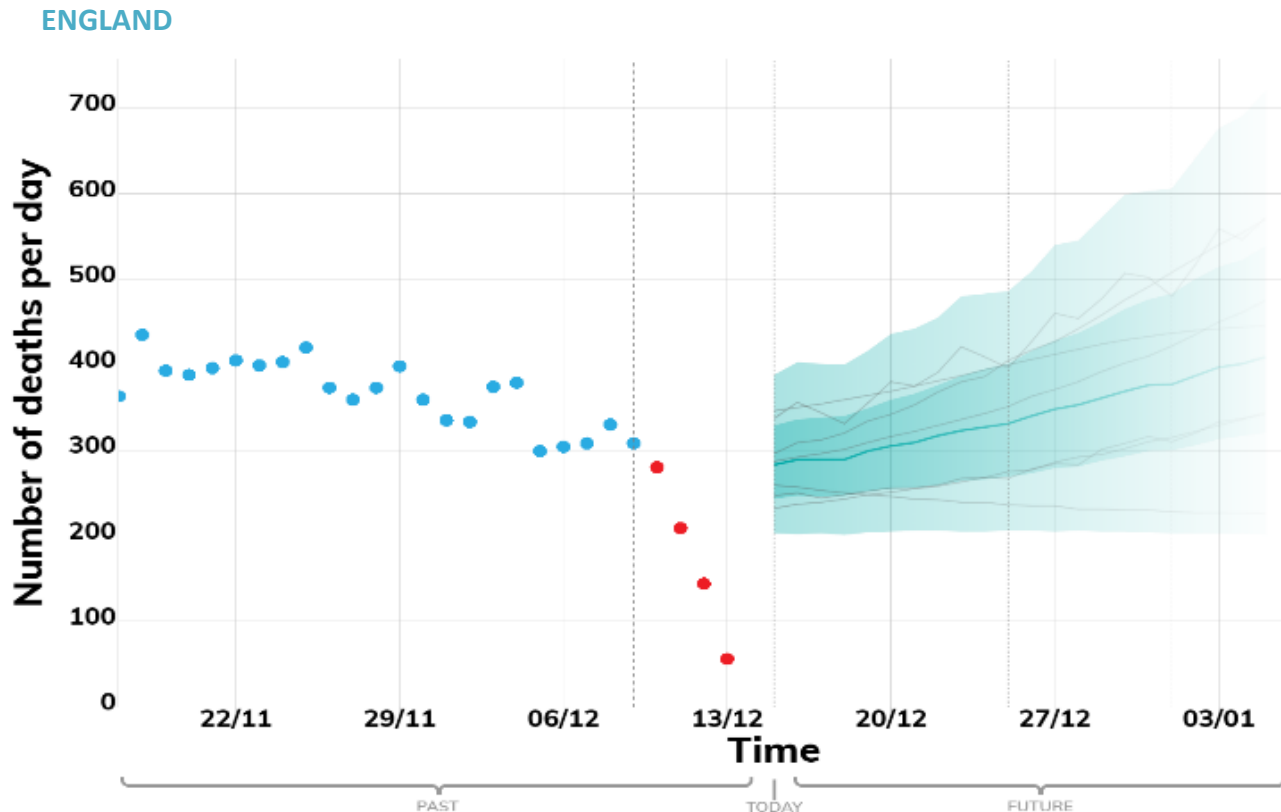
Data notes:

England: Number of patients admitted with confirmed COVID-19 and the number of inpatients diagnosed with COVID-19 in the past 24 hours. The past data is taken from the NHS England COVID-19 Sitreps.

Modelled projections based on trends to 14th December 2020

New deaths per day

These projections are based on current trends and cannot include the full impact of the implementation of the new tiers system in England. They are not forecasts or predictions.



Key

- Real data
- Expected to Increase
- Projection midpoint
- High and low estimates 5th to 95th percentile
- High and low estimates 25th to 75th percentile
- Model predictions

These fan charts show the combined medium-term projections based on current trends. They cannot account for policy or behavioural changes in the two to three weeks prior to 14th December, as these will not yet have been reflected in epidemiological data.

These projections will not *fully* reflect recent increases in cases and admissions in England.

The projections cannot reflect the impact of the new system of tiers or any future policy or behaviour changes yet to be seen in the data.

Data Notes:

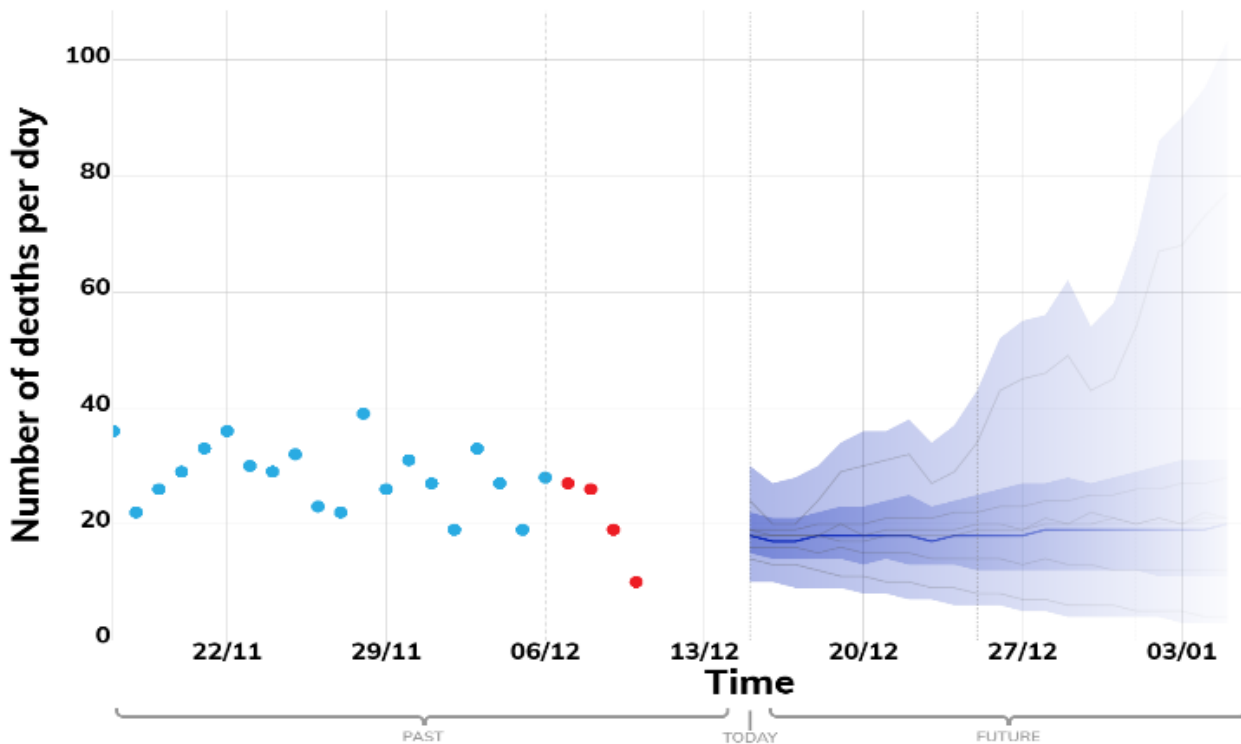
The number of COVID-19 deaths (by date of death) within 28 days of a positive test.
The past data for England is taken from the PHE line list of deaths.

Modelled projections based on trends to 14th December 2020

New deaths per day

These projections are based on current trends and cannot include any recent changes in policy or behaviour. They are not forecasts or predictions.

SCOTLAND



Key

- Real data
- Expected to Increase
- Projection midpoint
- High and low estimates 5th to 95th percentile
- High and low estimates 25th to 75th percentile
- Model predictions

These fan charts show the combined medium-term projections based on current trends. They cannot account for policy or behavioural changes in the two to three weeks prior to 14th December, as they will not yet be reflected in epidemiological data. **Nor can they reflect the impact of future policy or behavioural changes.**

Data Notes:

The number of COVID-19 deaths (by date of death) within 28 days of a positive test.
The past data for Scotland is taken from the Coronavirus (COVID-19) in the UK dashboard on Gov.uk.

Modelled projections based on trends to 14th December 2020

New deaths per day

These projections are based on current trends and cannot include the full impact of the implementation of the new tiers system in England. They are not forecasts or predictions.



Key



These fan charts show the combined medium-term projections based on current trends. They cannot account for policy or behavioural changes in the two to three weeks prior to 14th December, as these will not yet have been reflected in epidemiological data.

These projections will not *fully* reflect recent increases in cases and admissions in England.

The projections cannot reflect the impact of the new system of tiers or any future policy or behaviour changes yet to be seen in the data.

Data Notes:

The number of COVID-19 deaths (by date of death) within 28 days of a positive test. The past data for England is taken from the PHE line list of deaths.