

**SPI-M-O**

# **Medium-Term Projections**

**9<sup>th</sup> December 2020**

# SPI-M-O Medium-Term Projections

- **These projections are not forecasts or predictions.** They represent a scenario in which the trajectory of the epidemic continues to follow the trends that were seen in the data up to 7<sup>th</sup> December. They are dominated by data collected while England was under national restrictions (5<sup>th</sup> November to 2<sup>nd</sup> December).
- The impact of the new system of tiers in England is as yet unknown. These projections for England cannot account for any changes beyond 2<sup>nd</sup> December and the end of the national restrictions. **They should, therefore, be considered as counterfactuals of what might have happened in the absence of these changes and behaviour remaining the same.**
- Not all modelling groups produce projections for both hospitalisations and deaths. As a result, there will be some differences in the models included in the combined projections for each metric.
- Given this, and the great uncertainty around the impact of the festive period on transmission, these projections only cover the next three weeks instead of the usual six.
- **Projections made around the time policies are changed are much less likely to be accurate,** with the lagged nature of many data streams making it difficult to detect and interpret changes.
- **SPI-M has not produced consensus projections for Wales and Northern Ireland this week.** The recent strengthening of restrictions in both nations means current trends in hospital admission and deaths are likely to change within the next three weeks.

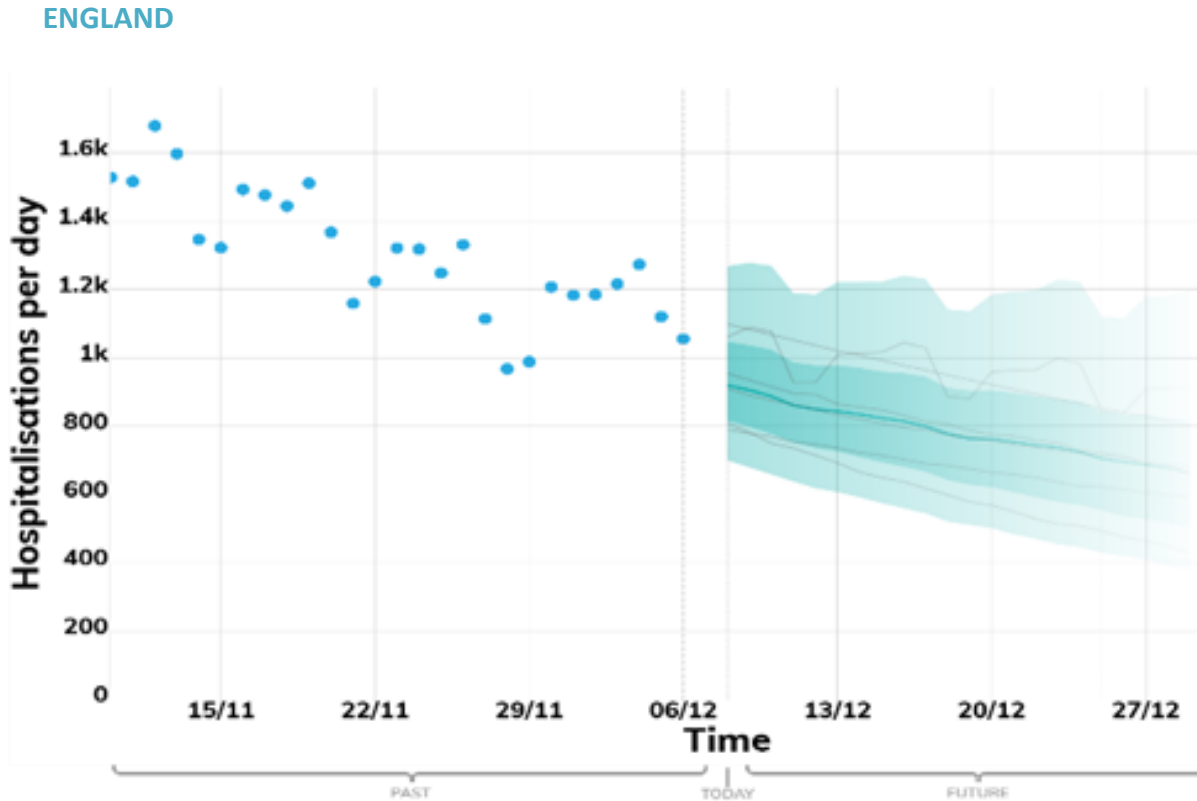
## Metrics:

- **New hospitalisations per day:** Number of individuals admitted with COVID-19 and inpatients newly diagnosed with COVID-19. Data definitions differ slightly across all four nations.
- **New deaths per day (by date of death):** The number of COVID-19 deaths within 28 days of a positive test. Data definitions differ slightly across all four nations.

# Modelled projections based on trends to 7<sup>th</sup> December 2020

## New hospital admissions per day

These projections are based on current trends and cannot include the impact of the end of national restrictions in England. They are not forecasts or predictions.



### Key

- Real data
- Expected to Increase
- Projection midpoint
- High and low estimates 5<sup>th</sup> to 95<sup>th</sup> percentile
- High and low estimates 25<sup>th</sup> to 75<sup>th</sup> percentile
- Model predictions

These fan charts show the combined medium-term projections based on current trends. They cannot account for policy or behavioural changes in the two to three weeks prior to 7<sup>th</sup> December, as they will not yet be reflected in epidemiological data.

The projections cannot include the impact of the end of national restrictions in England or reflect the impact of the new system of tiers. **These projections for England should be considered as counterfactuals of what might have happened in the absence of these changes and had behaviour remained the same.**

### Data notes:

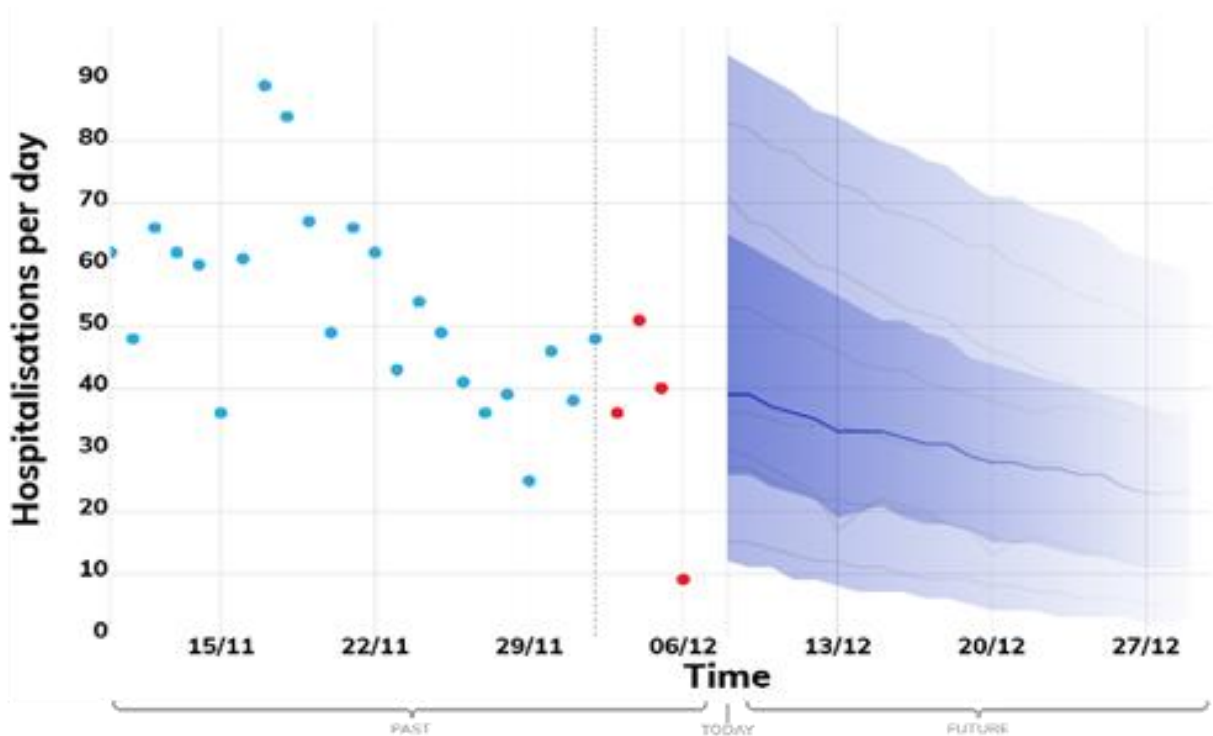
England: Number of patients admitted with confirmed COVID-19 and the number of inpatients diagnosed with COVID-19 in the past 24 hours. The past data is taken from the NHS England COVID-19 Sitreps.

# Modelled projections based on trends to 7<sup>th</sup> December 2020

## New hospital admissions per day

These projections are based on current trends and cannot include recent changes in policy or behaviour. They are not forecasts or predictions.

### SCOTLAND



### Key

- Real data
- Expected to Increase
- Projection midpoint
- High and low estimates 5<sup>th</sup> to 95<sup>th</sup> percentile
- High and low estimates 25<sup>th</sup> to 75<sup>th</sup> percentile
- Model predictions

These fan charts show the combined medium-term projections based on current trends. They cannot account for policy or behavioural changes in the two to three weeks prior to 7<sup>th</sup> December, as they will not yet be reflected in epidemiological data. **Nor can they reflect the impact of future policy or behavioural changes.**

### Data notes:

Number of patients admitted with confirmed COVID-19 and inpatients diagnosed with COVID-19 within 7 days of admission. The past data is provided by Public Health Scotland.

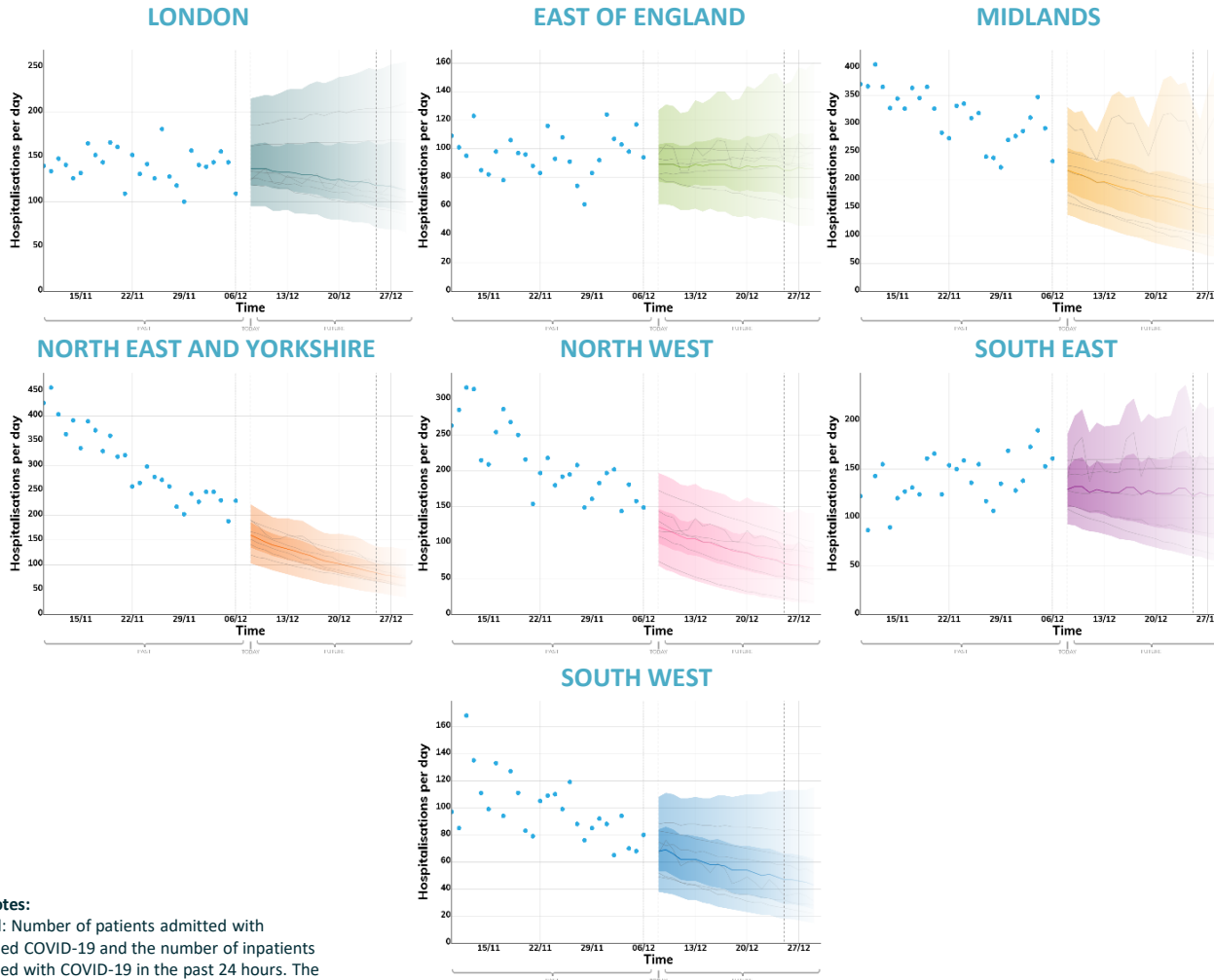
# Modelled projections based on trends to 7<sup>th</sup> December 2020

## New hospital admissions per day

These projections are based on current trends and cannot include the impact of the end of national restrictions in England. They are not forecasts or predictions.

### Key

- Real data
- Expected to Increase
- Projection midpoint
- High and low estimates 5<sup>th</sup> to 95<sup>th</sup> percentile
- High and low estimates 25<sup>th</sup> to 75<sup>th</sup> percentile
- Model predictions



These fan charts show the combined medium-term projections based on current trends. They cannot account for policy or behavioural changes in the two to three weeks prior to 7<sup>th</sup> December, as they will not yet be reflected in epidemiological data.

The projections cannot include the impact of the end of national restrictions in England or reflect the impact of the new system of tiers. **These projections for England should be considered as counterfactuals of what might have happened in the absence of these changes and had behaviour remained the same.**

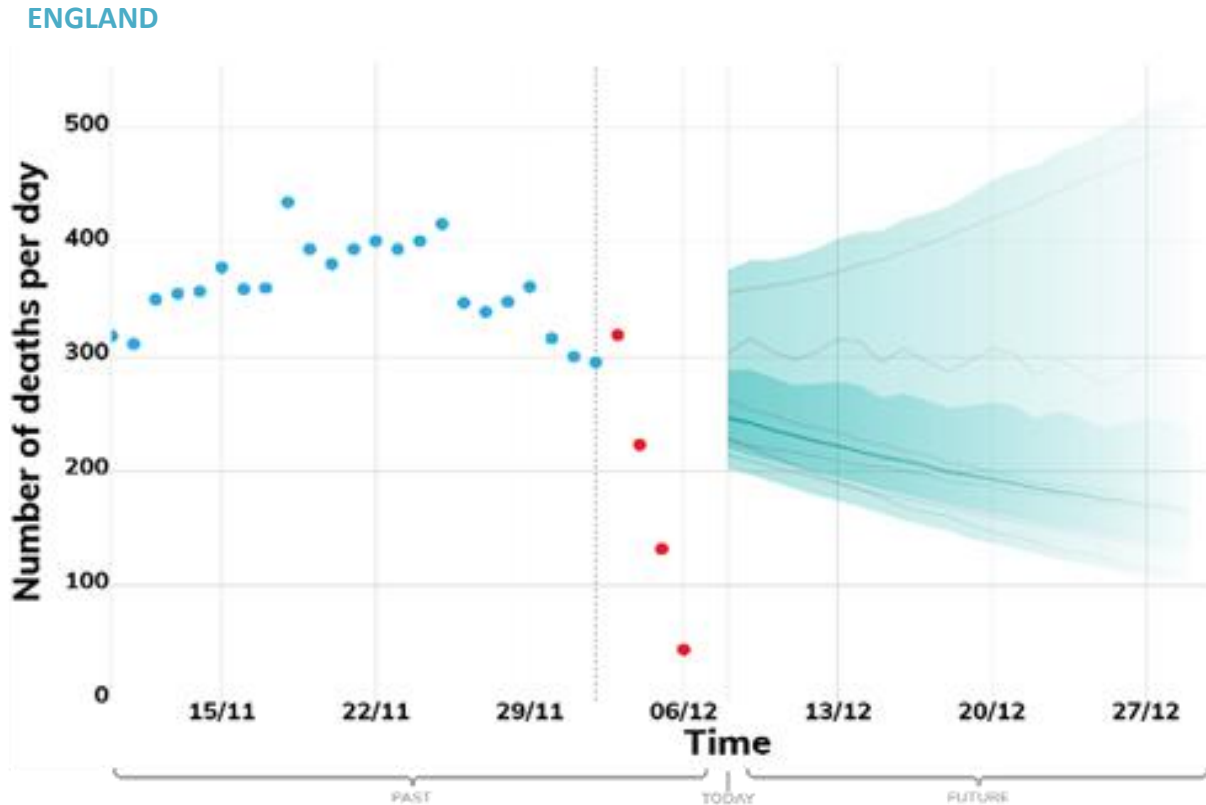
### Data notes:

England: Number of patients admitted with confirmed COVID-19 and the number of inpatients diagnosed with COVID-19 in the past 24 hours. The past data is taken from the NHS England COVID-19 Sitreps.

# Modelled projections based on trends to 7<sup>th</sup> December 2020

## New deaths per day

These projections are based on current trends and cannot include the impact of the end of national restrictions in England. They are not forecasts or predictions.



### Key

- Real data
- Expected to Increase
- Projection midpoint
- High and low estimates 5<sup>th</sup> to 95<sup>th</sup> percentile
- High and low estimates 25<sup>th</sup> to 75<sup>th</sup> percentile
- Model predictions

These fan charts show the combined medium-term projections based on current trends. They cannot account for policy or behavioural changes in the two to three weeks prior to 7<sup>th</sup> December, as they will not yet be reflected in epidemiological data.

The projections cannot include the impact of the end of national restrictions in England or reflect the impact of the new system of tiers. **The projections for England should be considered as counterfactuals of what might have happened in the absence of these changes and had behaviour remained the same.**

#### Data Notes:

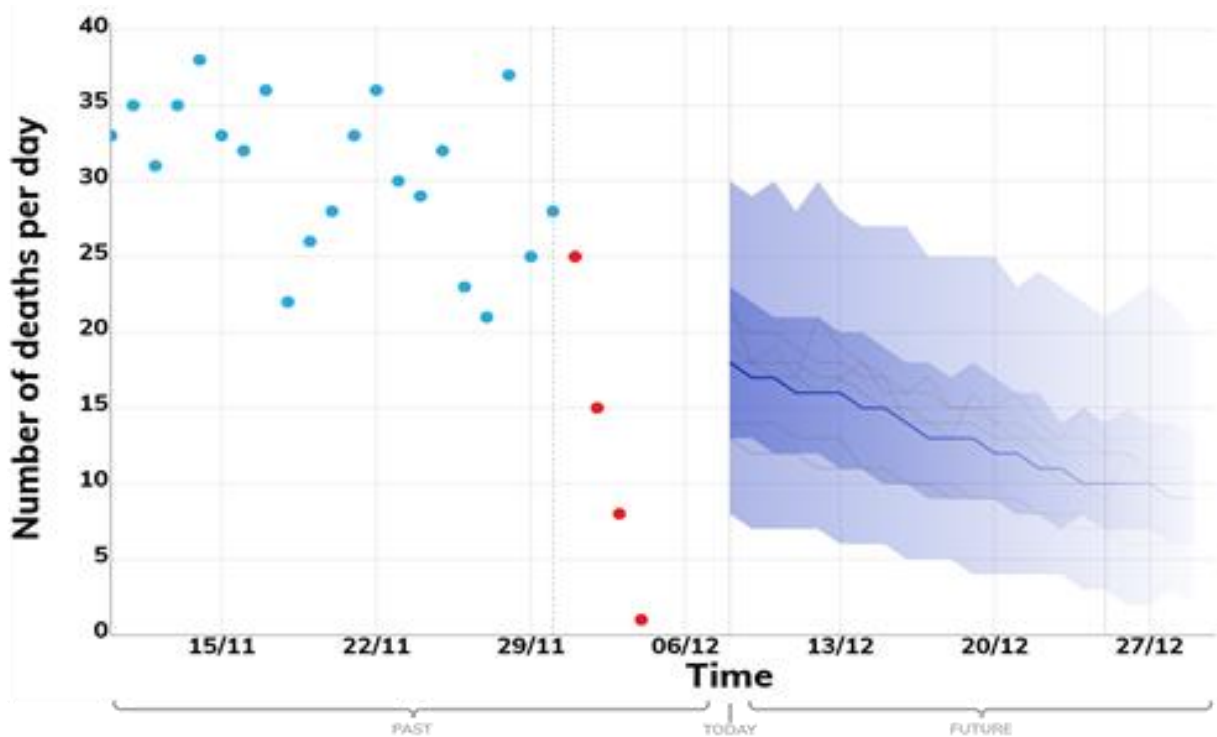
The number of COVID-19 deaths (by date of death) within 28 days of a positive test.  
The past data for England is taken from the PHE line list of deaths.  
For clarity, in some cases, y axes do not show complete extent of projections.

# Modelled projections based on trends to 7<sup>th</sup> December 2020

## New deaths per day

These projections are based on current trends and cannot include recent changes in policy or behaviour. They are not forecasts or predictions.

### SCOTLAND



### Key

- Real data
- Expected to Increase
- Projection midpoint
- High and low estimates 5<sup>th</sup> to 95<sup>th</sup> percentile
- High and low estimates 25<sup>th</sup> to 75<sup>th</sup> percentile
- Model predictions

These fan charts show the combined medium-term projections based on current trends. They cannot account for policy or behavioural changes in the two to three weeks prior to 7<sup>th</sup> December, as they will not yet be reflected in epidemiological data. **Nor can they reflect the impact of future policy or behavioural changes.**

#### Data Notes:

The number of COVID-19 deaths (by date of death) within 28 days of a positive test.  
The past data for Scotland is taken from the Coronavirus (COVID-19) in the UK dashboard on Gov.uk.  
For clarity, in some cases, y axes do not show complete extent of projections.

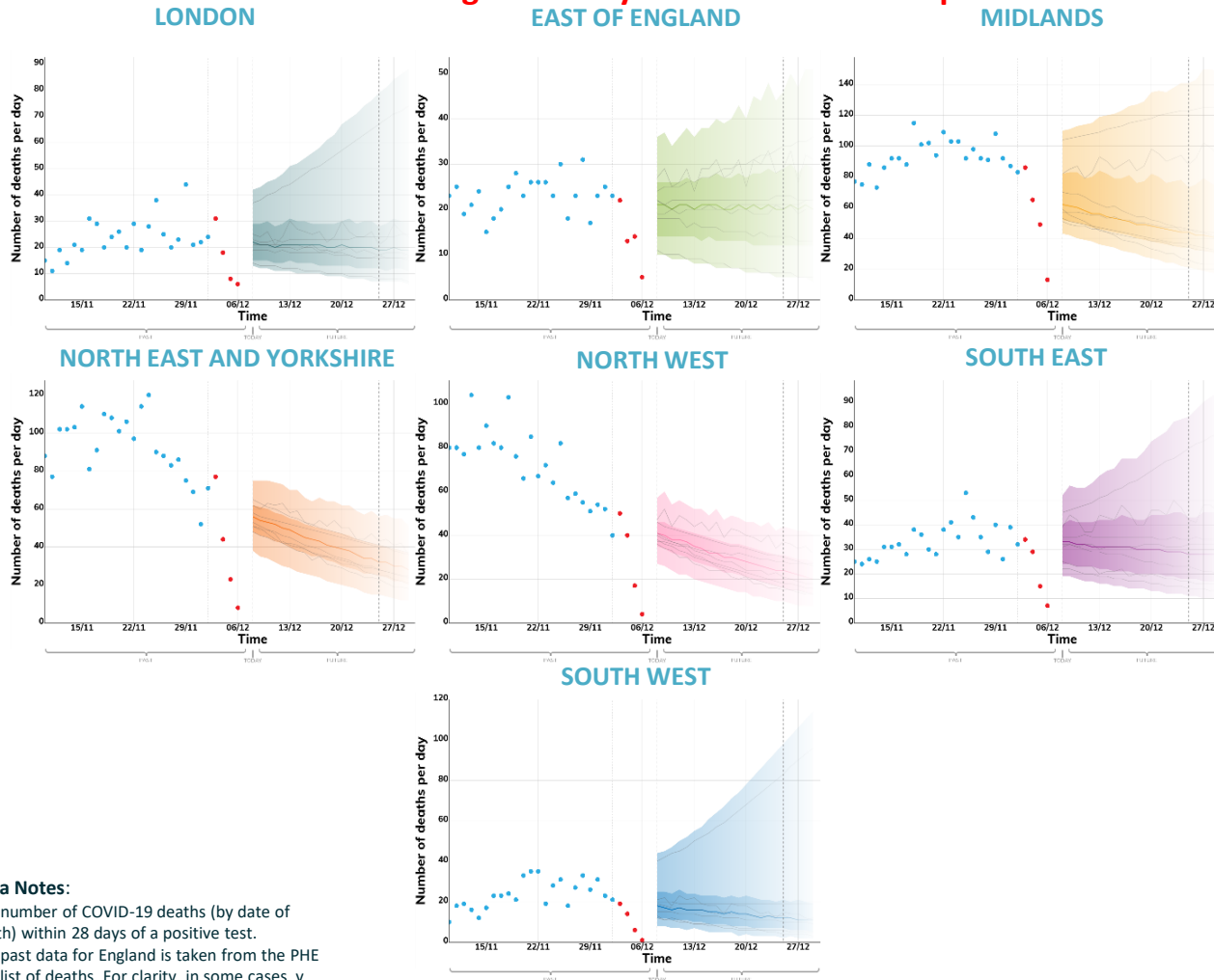
# Modelled projections based on trends to 7<sup>th</sup> December 2020

## New deaths per day

These projections are based on current trends and cannot include the impact of the end of national restrictions in England. They are not forecasts or predictions.

### Key

- Real data
- Expected to Increase
- Projection midpoint
- High and low estimates 5<sup>th</sup> to 95<sup>th</sup> percentile
- High and low estimates 25<sup>th</sup> to 75<sup>th</sup> percentile
- Model predictions



These fan charts show the combined medium-term projections based on current trends. They cannot account for policy or behavioural changes in the two to three weeks prior to 7<sup>th</sup> December, as they will not yet be reflected in epidemiological data.

The projections cannot include the impact of the end of national restrictions in England or reflect the impact of the new system of tiers.

**The projections for England should be considered as counterfactuals of what might have happened in the absence of these changes and had behaviour remained the same.**

### Data Notes:

The number of COVID-19 deaths (by date of death) within 28 days of a positive test. The past data for England is taken from the PHE line list of deaths. For clarity, in some cases, y axes do not show complete extent of projections.