

**SPI-M-O**

# **Medium-Term Projections**

**2<sup>nd</sup> December 2020**

# SPI-M-O medium-term projections

- **These projections are not forecasts or predictions.** They represent a scenario in which the trajectory of the epidemic continues to follow the trends that were seen in the data up to the 30<sup>th</sup> November.
- We do not yet know what impact the new system of Tiers will have in England. **Projections cannot account for any changes beyond the end of lockdown**, but most of that effect will not be seen in hospital admissions or deaths in the 3 week period these cover.
- Given this, and the great uncertainty around the impact of Christmas on transmission, these projections only cover the 3 weeks instead of the usual 6.
- **Projections made around the time that policies are changed are much less likely to be accurate.** The lagged nature of many data streams makes it difficult to detect and interpret changes.
- **SPI-M has not produced consensus projections for Wales and Northern Ireland this week.** The recent strengthening of restrictions in both nations means current trends in hospital admission and deaths are likely to change within the next 3 weeks.
- Note added for release: Not all modelling groups produce projections for both hospitalisations and deaths. As a result, there will be some differences in the models that are included in the combined projections for each metric.

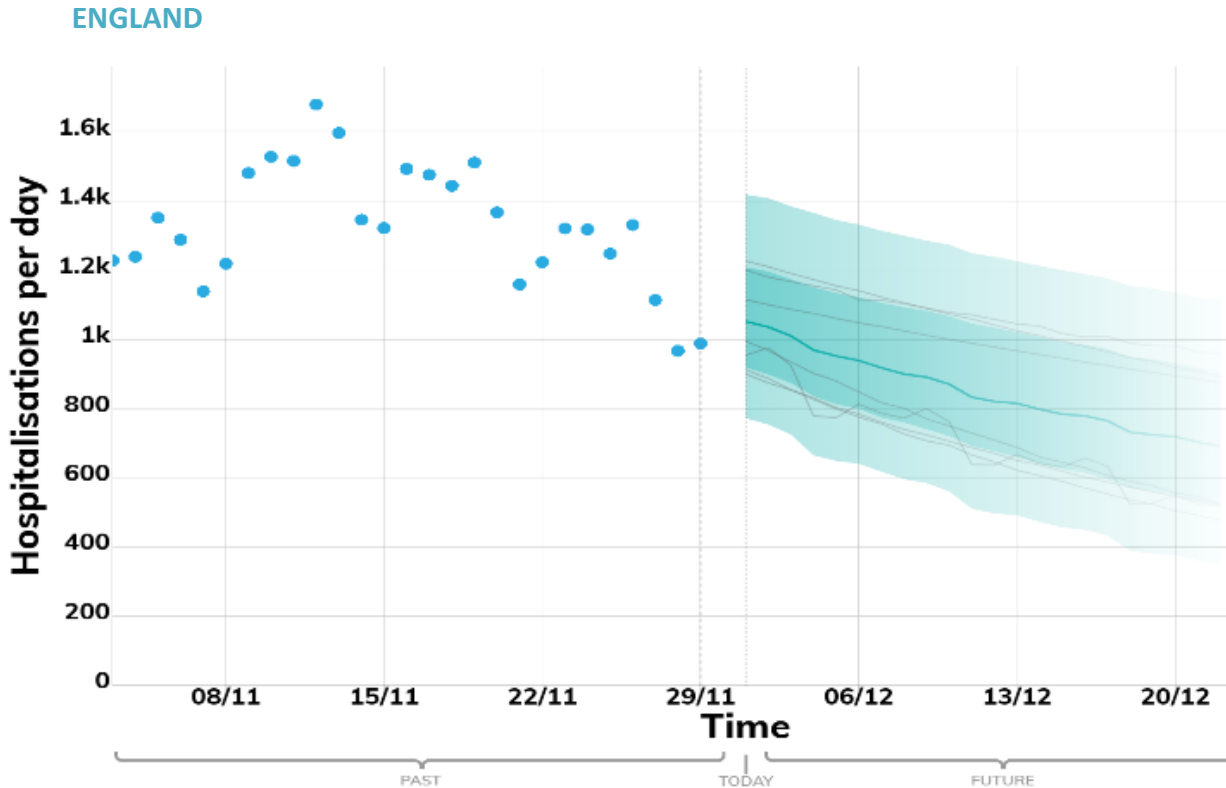
## Metrics:

- **New hospitalisations per day:** Number of individuals admitted with COVID-19 and inpatients newly diagnosed with COVID-19. Data definitions differ slightly across all four nations.
- **New deaths per day (by date of death):** The number of COVID-19 deaths within 28 days of a positive test. Data definitions differ slightly across all four nations.

# Modelled projections based on trends to 30<sup>th</sup> November 2020

## New hospital admissions per day

These projections are based on current trends and cannot include the impact of the end of lockdown. They are not forecasts or predictions.



### Key

- Real data
- Expected to Increase
- Projection midpoint
- High and low estimates 5<sup>th</sup> to 95<sup>th</sup> percentile
- High and low estimates 25<sup>th</sup> to 75<sup>th</sup> percentile
- Model predictions

These fan charts show the combined medium-term projections based on current trends. They cannot account for policy or behavioural changes in the 2-3 weeks prior to 30<sup>th</sup> November, as they will not yet be reflected in epidemiological data. **Nor can they reflect the impact of the new system of Tiers.**

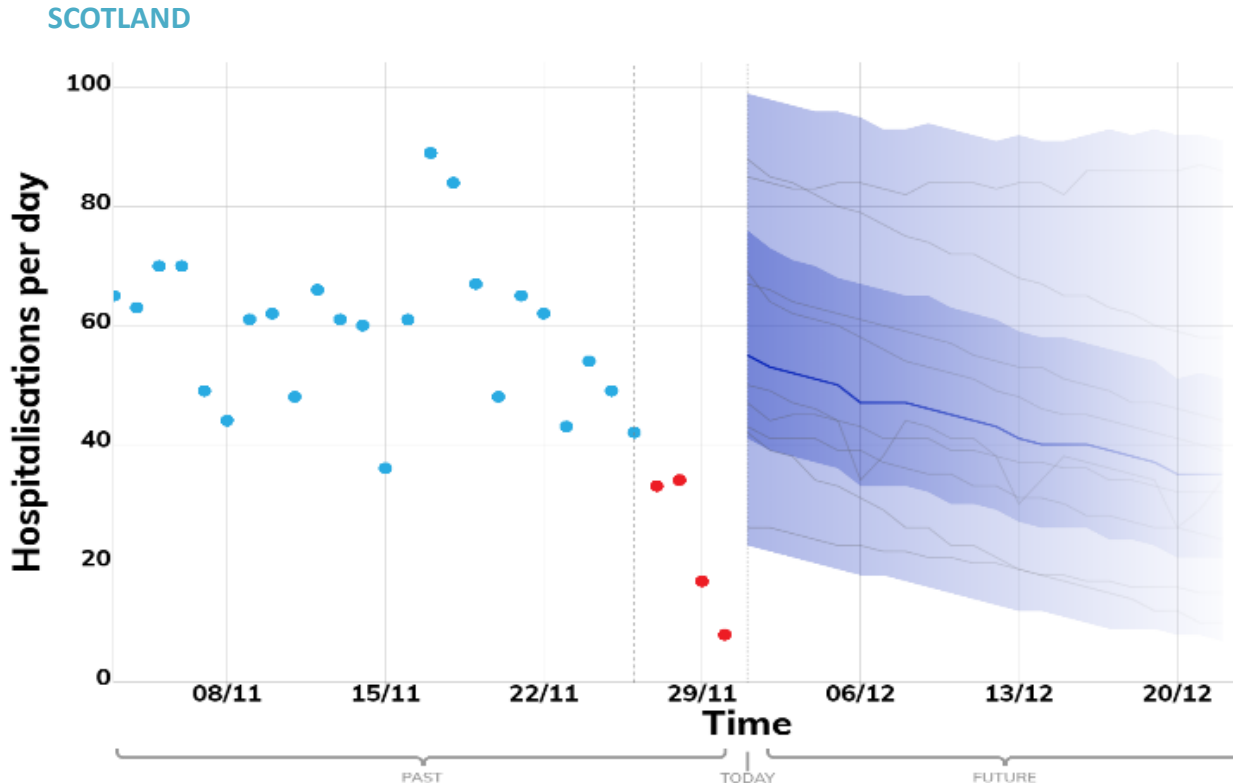
#### Data notes:

England: Number of patients admitted with confirmed COVID-19 and the number of inpatients diagnosed with COVID-19 in the past 24 hours. The past data is taken from the NHS England COVID-19 Sitreps.

# Modelled projections based on trends to 30<sup>th</sup> November 2020

## New hospital admissions per day

These projections are based on current trends and cannot include recent changes in policy or behaviour. They are not forecasts or predictions.



### Key

- Real data
- Expected to Increase
- Projection midpoint
- High and low estimates 5<sup>th</sup> to 95<sup>th</sup> percentile
- High and low estimates 25<sup>th</sup> to 75<sup>th</sup> percentile
- Model predictions

These fan charts show the combined medium-term projections based on current trends. They cannot account for policy or behavioural changes in the 2-3 weeks prior to 30<sup>th</sup> November, as they will not yet be reflected in epidemiological data. **Nor can they reflect the impact of future policy or behavioural changes.**

Data notes (source added for release):

Number of patients admitted with confirmed COVID-19 and inpatients diagnosed with COVID-19 within 7 days of admission. The past data is provided by Public Health Scotland.

# Modelled projections based on trends to 30<sup>th</sup> November 2020

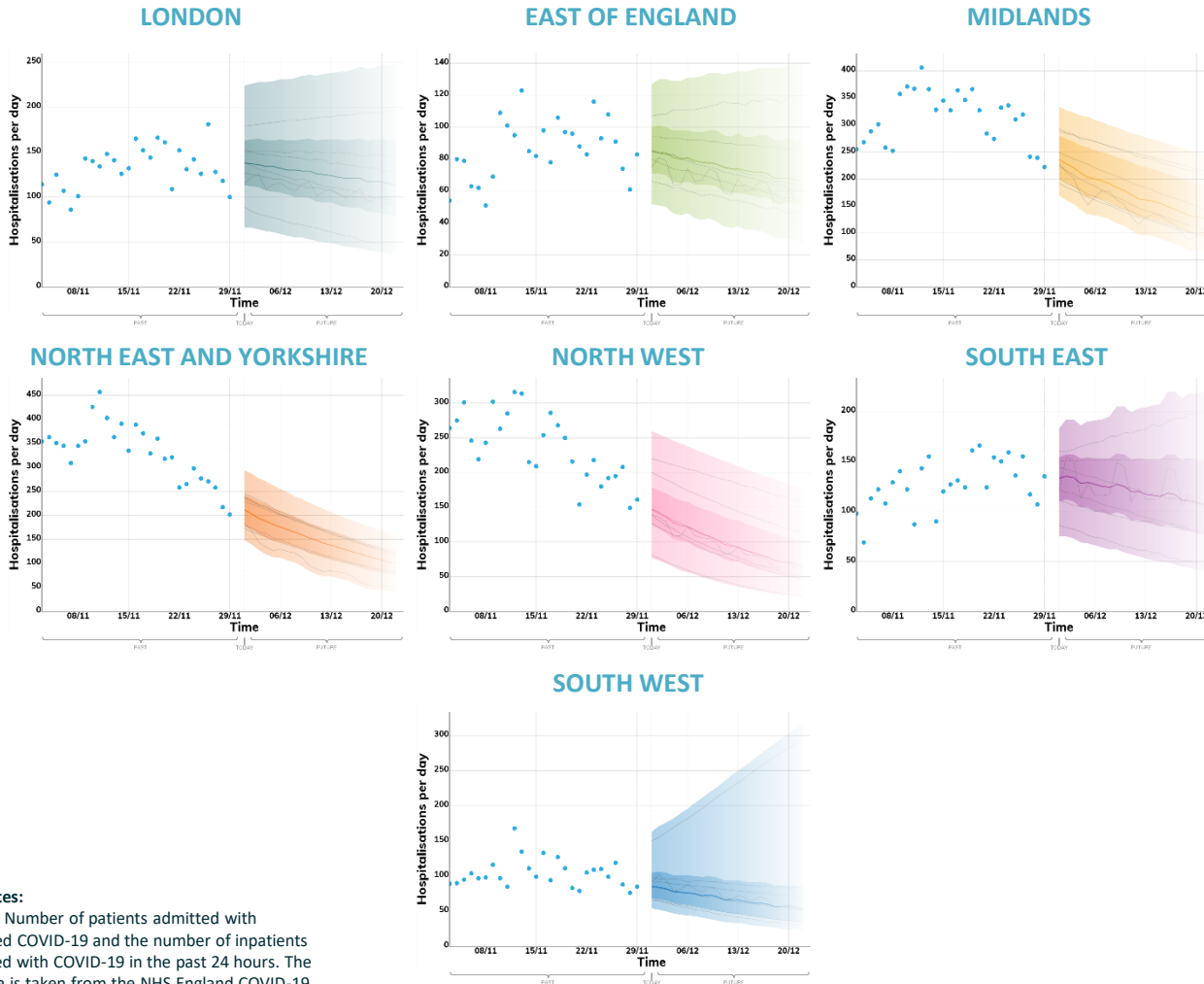
## New hospital admissions per day

These projections are based on current trends and cannot include the impact of the end of lockdown. They are not forecasts or predictions.

### Key



These fan charts show the combined medium-term projections based on current trends. They cannot account for policy or behavioural changes in the 2-3 weeks prior to 30<sup>th</sup> November, as they will not yet be reflected in epidemiological data. **Nor can they reflect the impact of the new system of Tiers.**



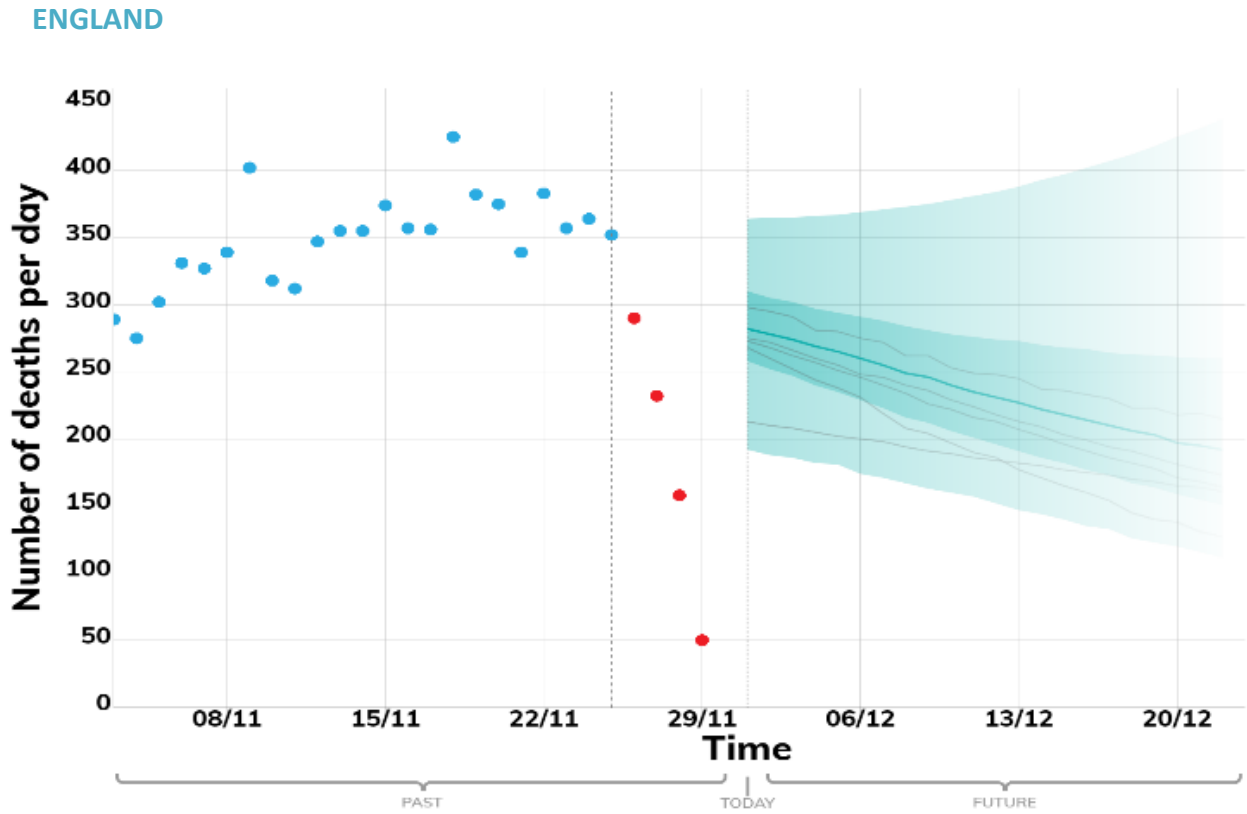
### Data notes:

England: Number of patients admitted with confirmed COVID-19 and the number of inpatients diagnosed with COVID-19 in the past 24 hours. The past data is taken from the NHS England COVID-19 Sitreps.

# Modelled projections based on trends to 30<sup>th</sup> November 2020

## New deaths per day

These projections are based on current trends and cannot include the impact of the end of lockdown. They are not forecasts or predictions.



### Key

- Real data
- Expected to Increase
- Projection midpoint
- High and low estimates 5<sup>th</sup> to 95<sup>th</sup> percentile
- High and low estimates 25<sup>th</sup> to 75<sup>th</sup> percentile
- Model predictions

These fan charts show the combined medium-term projections based on current trends. They cannot account for policy or behavioural changes in the 2-3 weeks prior to 30<sup>th</sup> November, as they will not yet be reflected in epidemiological data. **Nor can they reflect the impact of the new system of Tiers.**

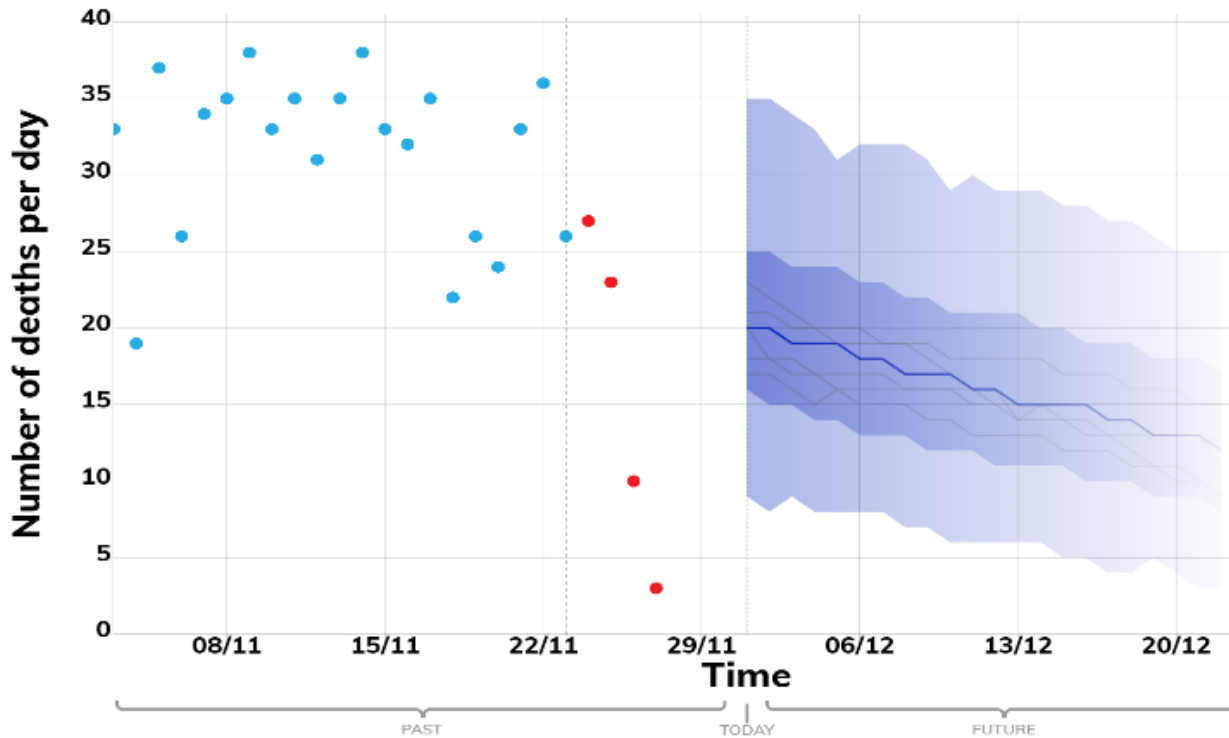
**Data Notes:**  
The number of COVID-19 deaths (by date of death) within 28 days of a positive test.  
The past data for England is taken from the PHE line list of deaths.  
For clarity, in some cases, y axes do not show complete extent of projections.

# Modelled projections based on trends to 30<sup>th</sup> November 2020

## New deaths per day

These projections are based on current trends and cannot include recent changes in policy or behaviour. They are not forecasts or predictions.

### SCOTLAND



### Key

- Real data
- Expected to Increase
- Projection midpoint
- High and low estimates 5<sup>th</sup> to 95<sup>th</sup> percentile
- High and low estimates 25<sup>th</sup> to 75<sup>th</sup> percentile
- Model predictions

These fan charts show the combined medium-term projections based on current trends. They cannot account for policy or behavioural changes in the 2-3 weeks prior to 30<sup>th</sup> November, as they will not yet be reflected in epidemiological data. **Nor can they reflect the impact of future policy or behavioural changes.**

### Data Notes:

The number of COVID-19 deaths (by date of death) within 28 days of a positive test.  
The past data for Scotland is taken from the Coronavirus (COVID-19) in the UK dashboard on Gov.uk.  
For clarity, in some cases, y axes do not show complete extent of projections.

# Modelled projections based on trends to 30<sup>th</sup> November 2020

## New deaths per day

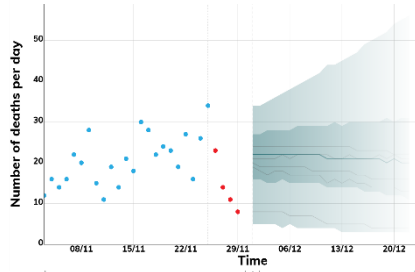
These projections are based on current trends and cannot include the impact of the end of lockdown. They are not forecasts or predictions.

### Key

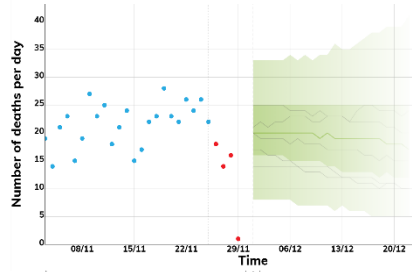


These fan charts show the combined medium-term projections based on current trends. They cannot account for policy or behavioural changes in the 2-3 weeks prior to 30<sup>th</sup> November, as they will not yet be reflected in epidemiological data. **Nor can they reflect the impact of the new system of Tiers.**

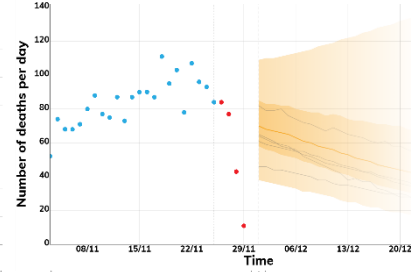
### LONDON



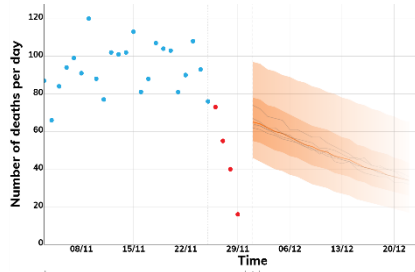
### EAST OF ENGLAND



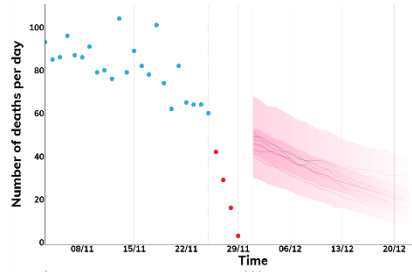
### MIDLANDS



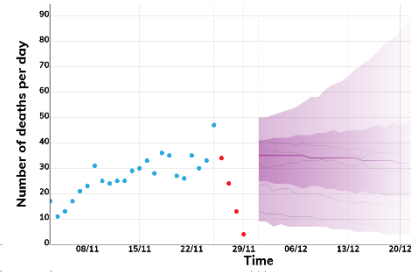
### NORTH EAST AND YORKSHIRE



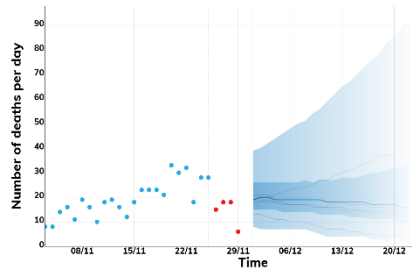
### NORTH WEST



### SOUTH EAST



### SOUTH WEST



### Data Notes:

The number of COVID-19 deaths (by date of death) within 28 days of a positive test. The past data for England is taken from the PHE line list of deaths. For clarity, in some cases, y axes do not show complete extent of projections.