



Department
of Health &
Social Care

Yorkshire and Humber: lower tier local authority watchlist – epidemiological charts

Produced 04 January 2021

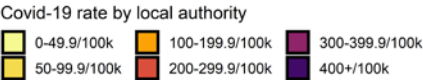
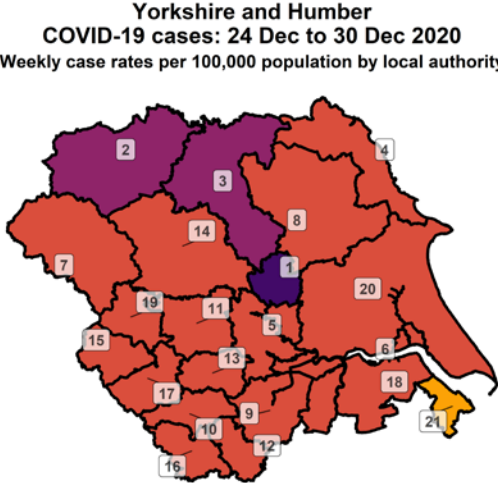
NOTES

- This data is provided by Public Health England for the purpose of monitoring and supporting the management of Covid-19 infections in Local Authorities.
- The reports are produced using 2019 ONS population data
- If you would like to know the weekly trend for the case rate charts and persons tested chart please see Lower-tier local authority watchlist.

Weekly case rate per 100,000 population by local authority: 24 Dec to 30 Dec 2020

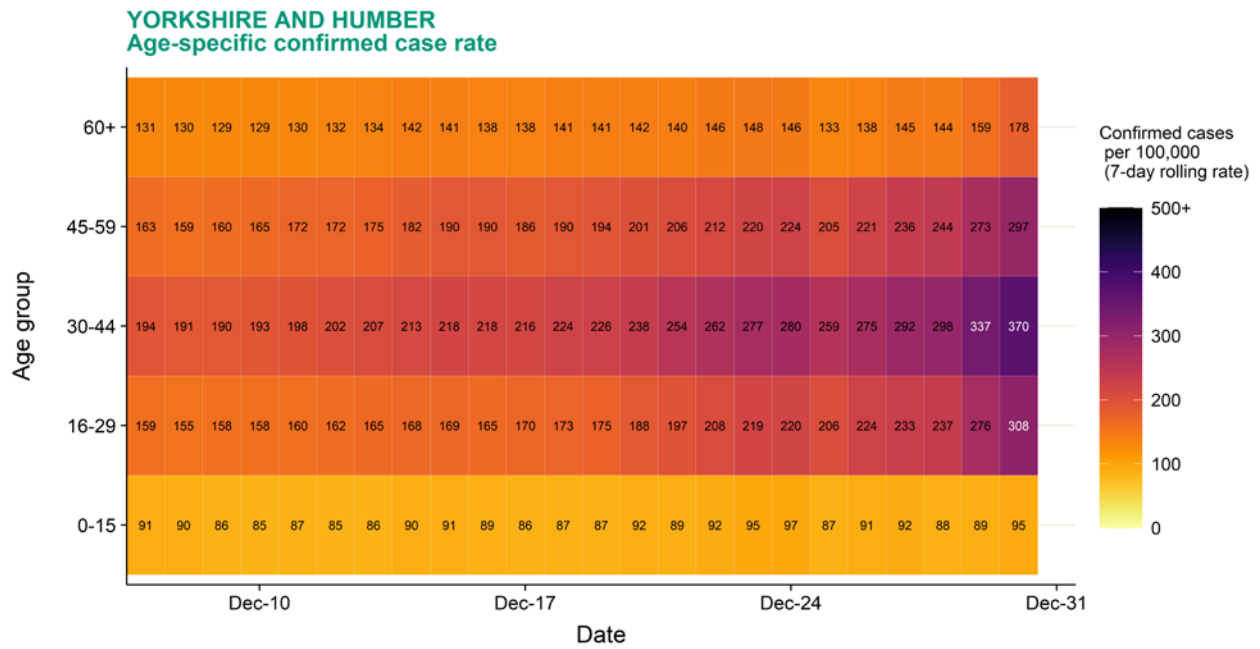
Rank	Local Authority	Case Rate (per 100,000)	Number of cases (1 week)
1	York	428.7	903
2	Richmondshire	372.2	200
3	Hambleton	359.2	329
4	Scarborough	297.0	323
5	Selby	290.2	263
6	Kingston upon Hull, City of	289.5	752
7	Craven	280.0	160
8	Ryedale	279.9	155
9	Doncaster	278.6	869
10	Barnsley	260.1	642

Rank	Local Authority	Case Rate (per 100,000)	Number of cases (1 week)
11	Leeds	253.5	2011
12	Rotherham	252.8	671
13	Wakefield	242.3	844
14	Harrogate	236.9	381
15	Calderdale	224.2	474
16	Sheffield	222.6	1302
17	Kirklees	210.1	924
18	North Lincolnshire	208.4	359
19	Bradford	207.7	1121
20	East Riding of Yorkshire	204.0	696
21	North East Lincolnshire	140.4	224



Data from SGSS; Pillar 1 and 2 testing. Figure by Outbreak Surveillance Team, Public Health England.
 Contains National Statistics data including 2019 population estimates Â© Crown copyright and database right 2020

Age-stratified heatmap of weekly case rate for Yorkshire and Humber : 07 Dec to 30 Dec 2020



Source: Case data from SGSS. Produced by Outbreak Surveillance Team, PHE

Contains National Statistics data Â© Crown copyright and database right 2020

Age-stratified heatmap of weekly case rate by local authority for Yorkshire and Humber : 07 Dec to 30 Dec 2020



Source: Case data from SGSS. Produced by Outbreak Surveillance Team, PHE

Contains National Statistics data Â© Crown copyright and database right 2020

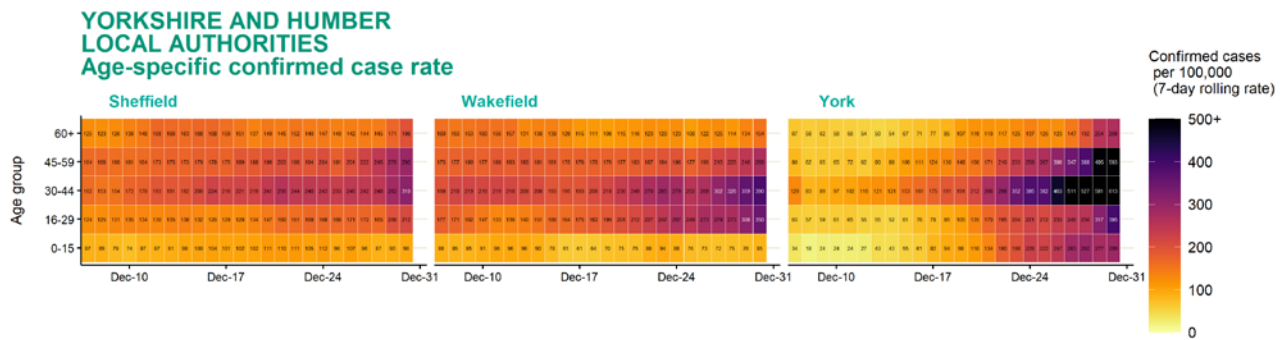
Age-stratified heatmap of weekly case rate by local authority for Yorkshire and Humber : 07 Dec to 30 Dec 2020



Source: Case data from SGSS. Produced by Outbreak Surveillance Team, PHE

Contains National Statistics data Â© Crown copyright and database right 2020

Age-stratified heatmap of weekly case rate by local authority for Yorkshire and Humber : 07 Dec to 30 Dec 2020

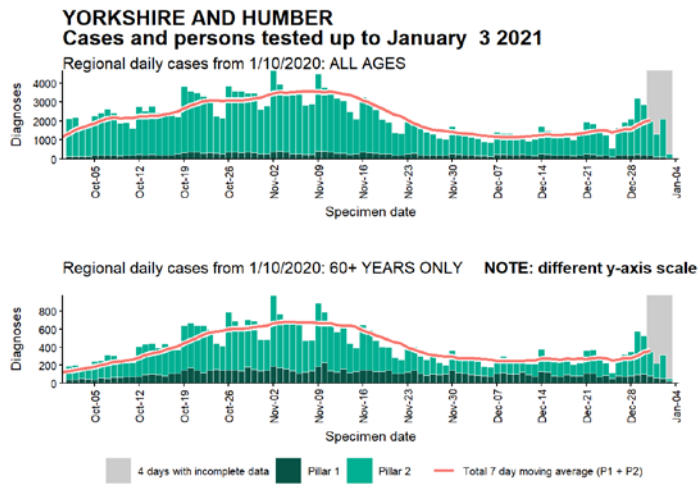


Date

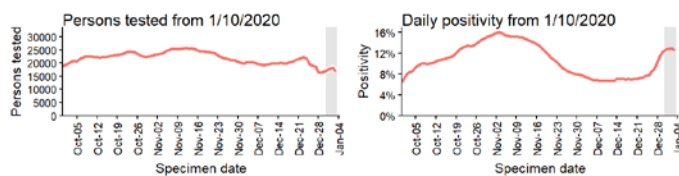
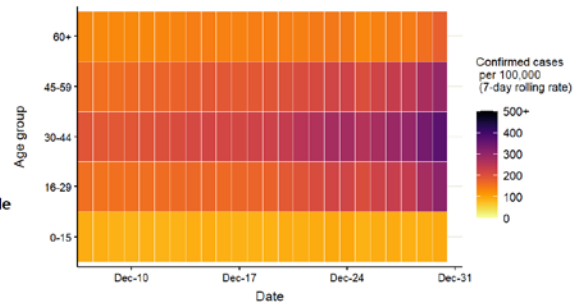
Source: Case data from SGSS. Produced by Outbreak Surveillance Team, PHE

Contains National Statistics data Â© Crown copyright and database right 2020

Regional case numbers, testing numbers and positivity, Yorkshire and Humber : 01 Sep to 03 Jan 2021

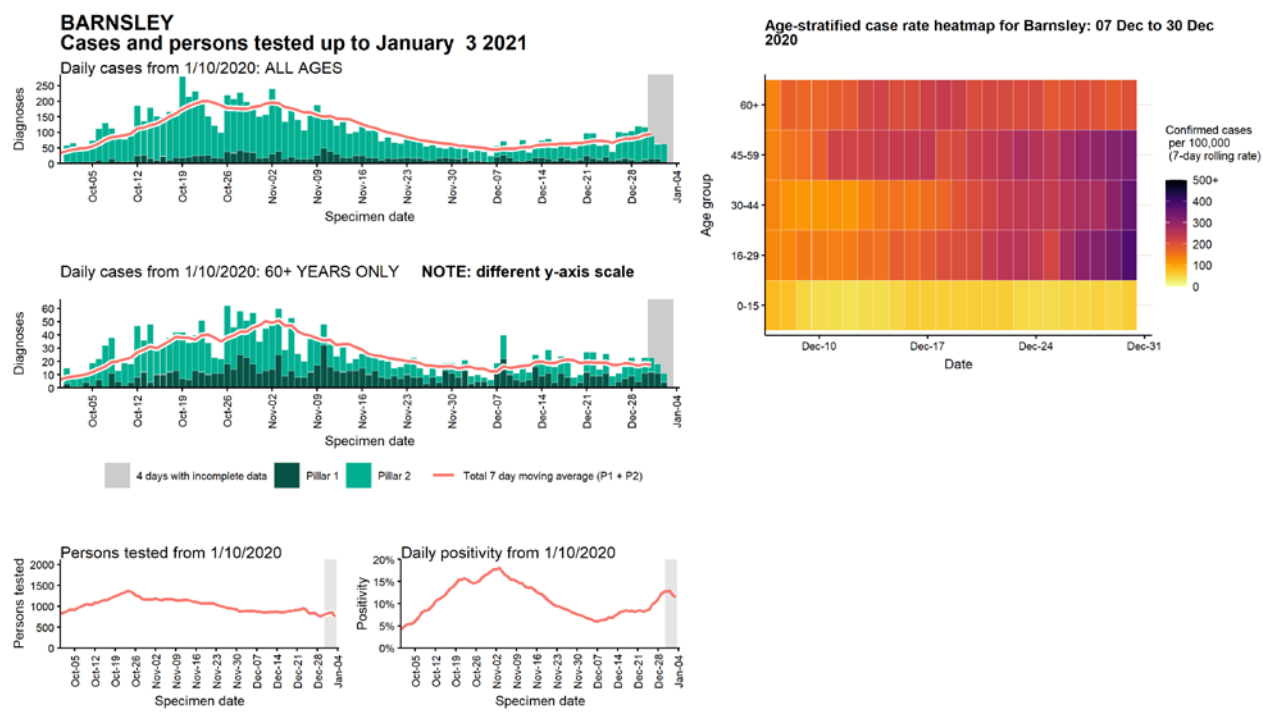


Regional age-stratified case rate heatmap for Yorkshire and Humber: 07 Dec to 30 Dec 2020

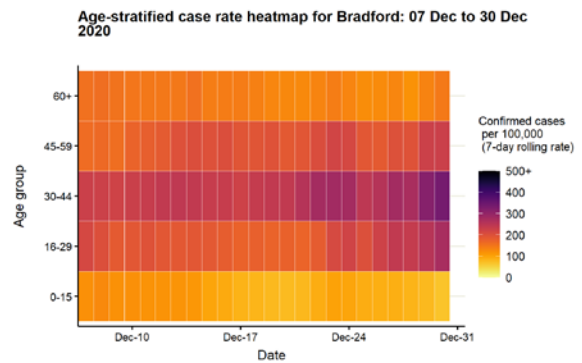
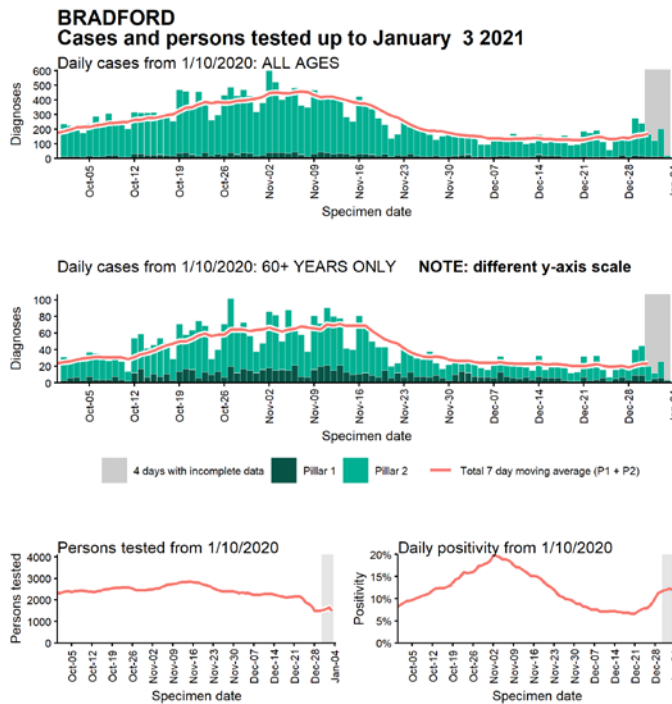


Data from SGSS. Produced by Outbreak Surveillance Team, PHE

Case numbers, testing numbers and positivity, Barnsley : 01 Sep to 03 Jan 2021

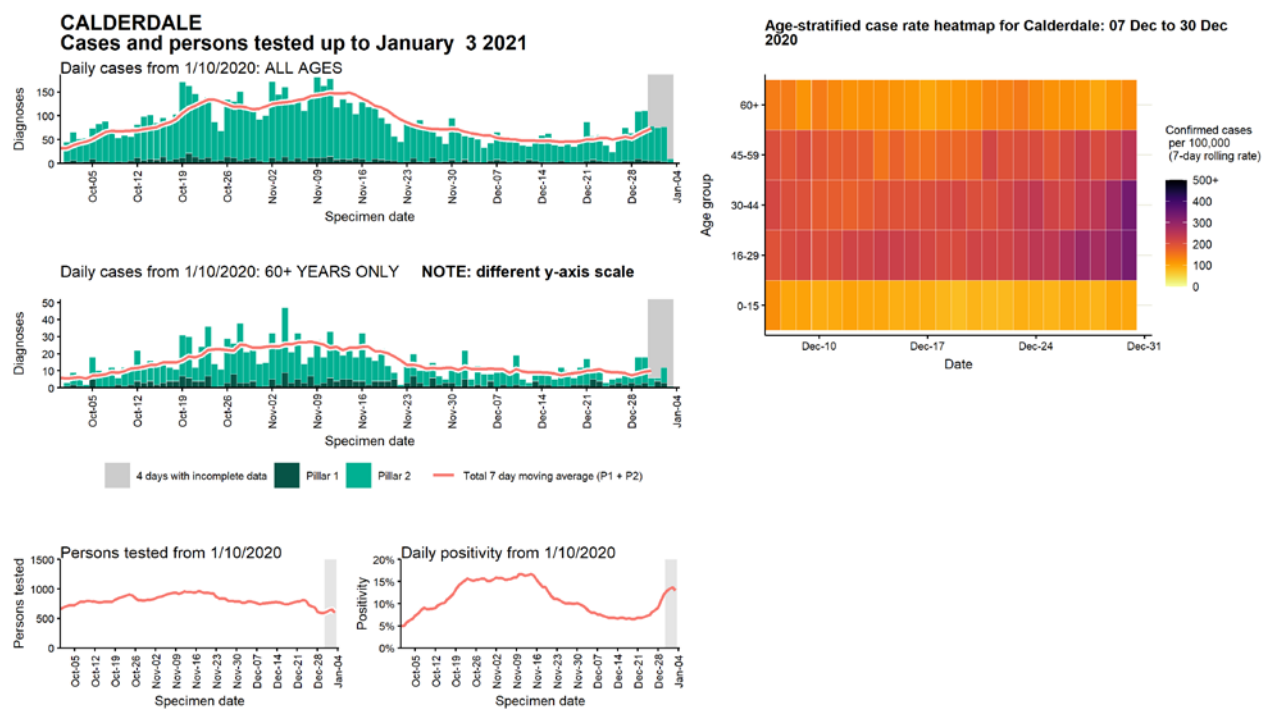


Case numbers, testing numbers and positivity, Bradford : 01 Sep to 03 Jan 2021

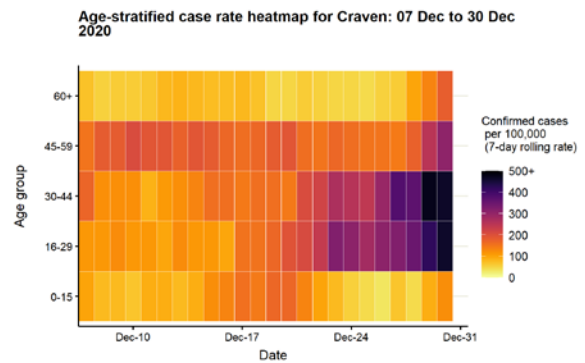
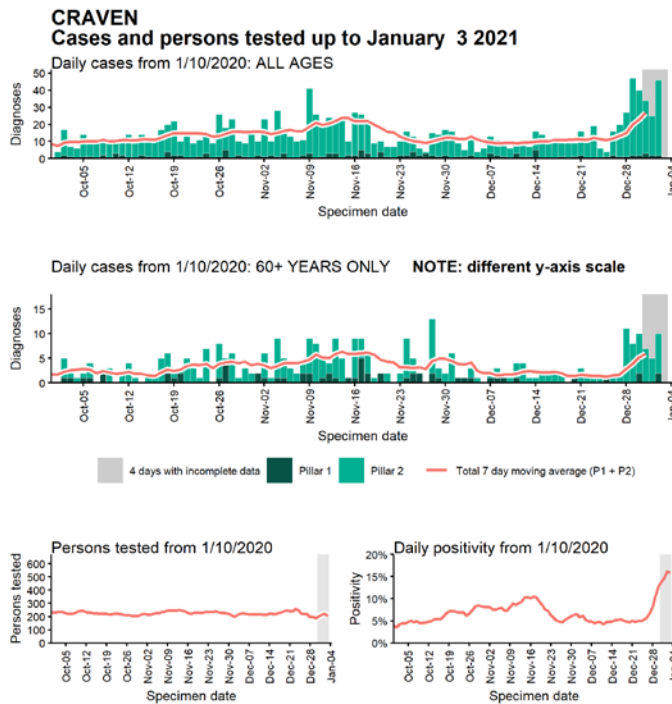


Data from SGSS. Produced by Outbreak Surveillance Team, PHE

Case numbers, testing numbers and positivity, Calderdale : 01 Sep to 03 Jan 2021

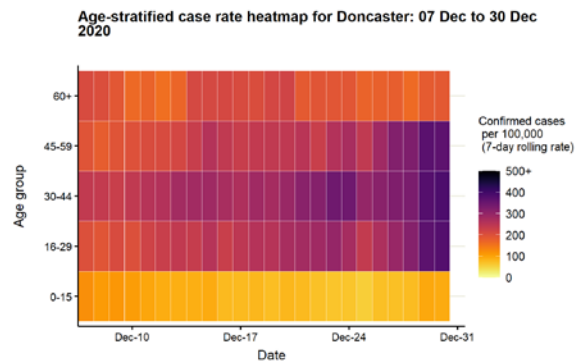
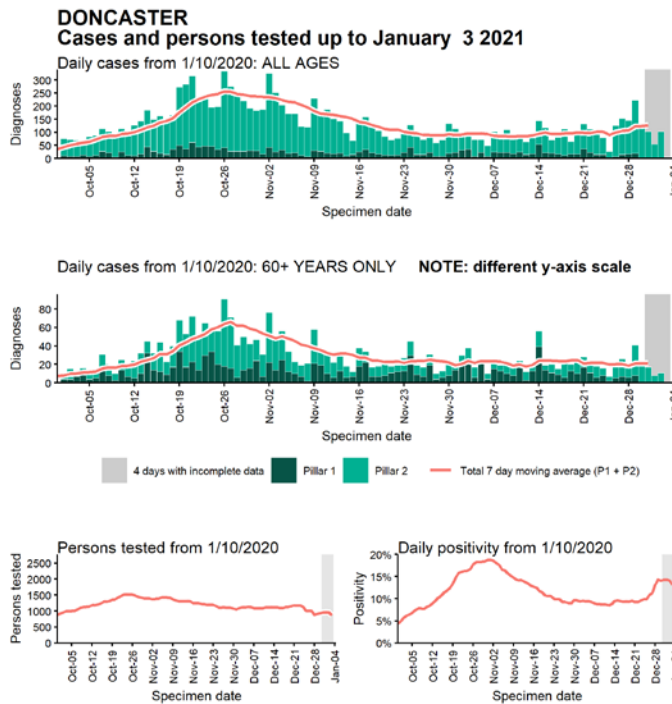


Case numbers, testing numbers and positivity, Craven : 01 Sep to 03 Jan 2021



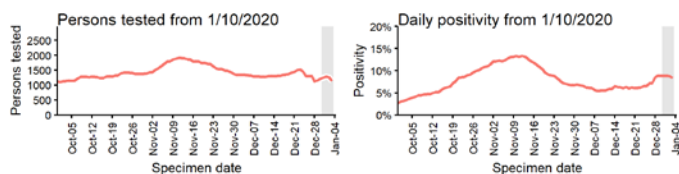
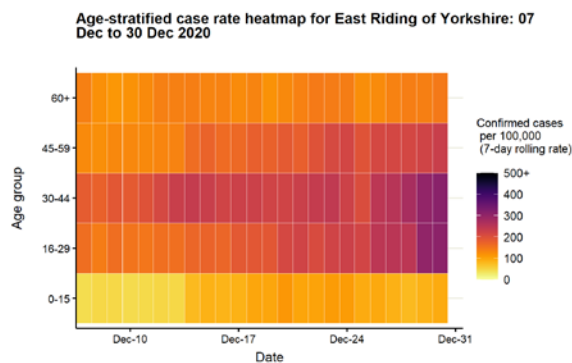
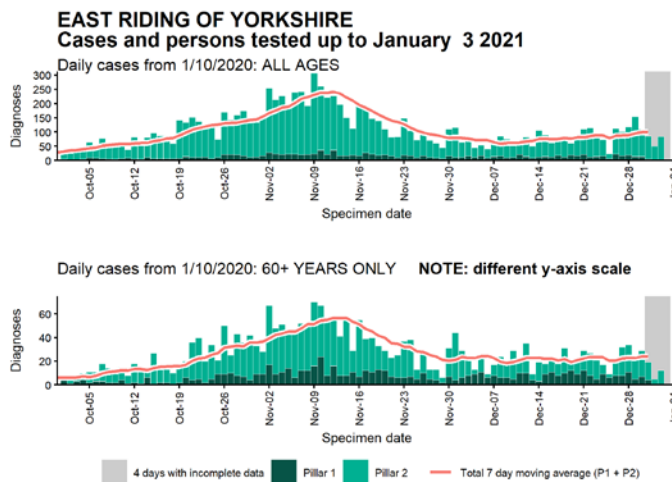
Data from SGSS. Produced by Outbreak Surveillance Team, PHE

Case numbers, testing numbers and positivity, Doncaster : 01 Sep to 03 Jan 2021



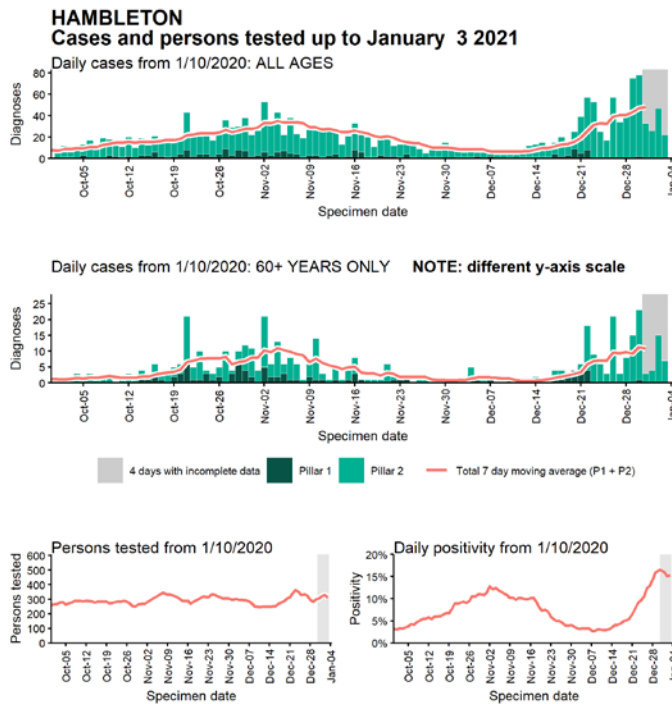
Data from SGSS. Produced by Outbreak Surveillance Team, PHE

Case numbers, testing numbers and positivity, East Riding of Yorkshire : 01 Sep to 03 Jan 2021

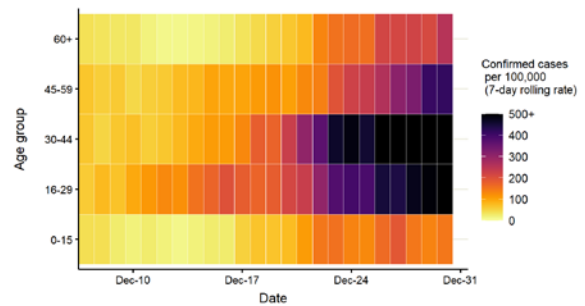


Data from SGSS. Produced by Outbreak Surveillance Team, PHE

Case numbers, testing numbers and positivity, Hambleton : 01 Sep to 03 Jan 2021

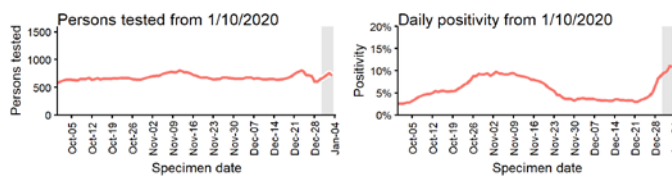
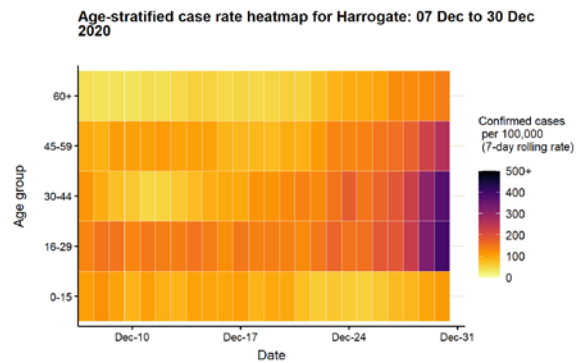
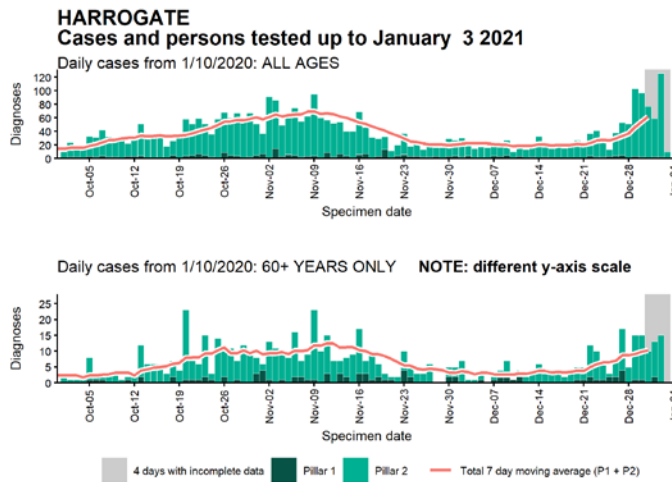


Age-stratified case rate heatmap for Hambleton: 07 Dec to 30 Dec 2020



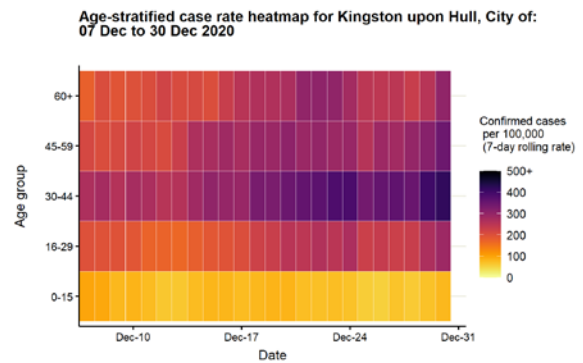
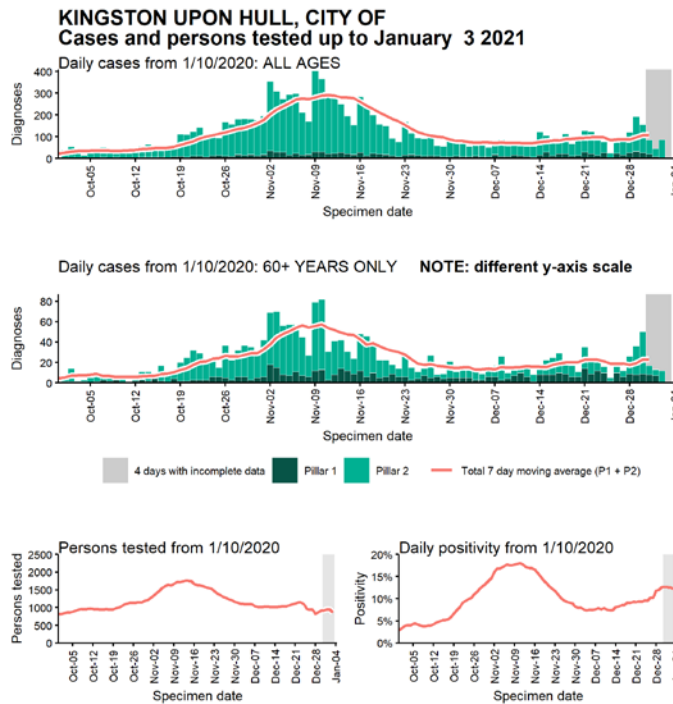
Data from SGSS. Produced by Outbreak Surveillance Team, PHE

Case numbers, testing numbers and positivity, Harrogate : 01 Sep to 03 Jan 2021



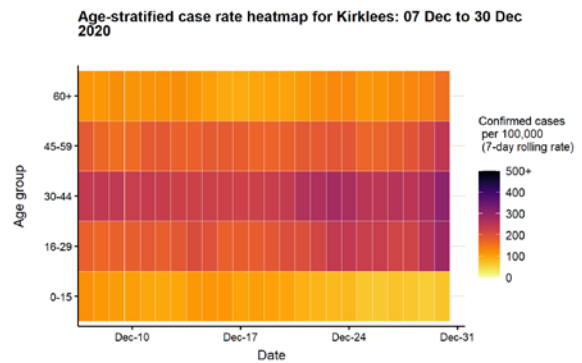
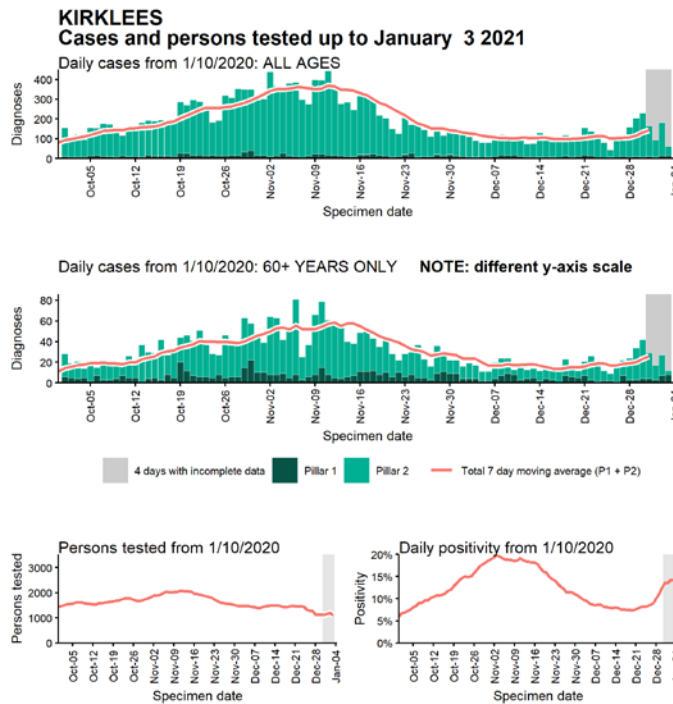
Data from SGSS. Produced by Outbreak Surveillance Team, PHE

Case numbers, testing numbers and positivity, Kingston upon Hull, City of : 01 Sep to 03 Jan 2021



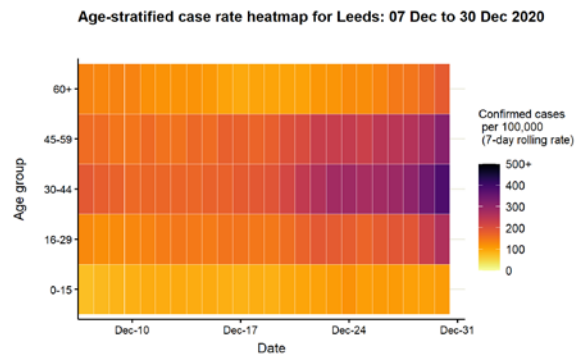
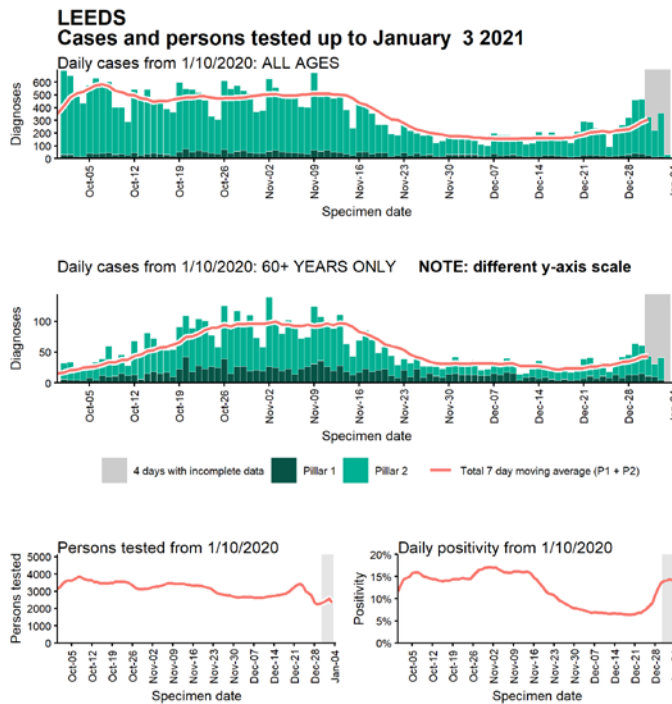
Data from SGSS. Produced by Outbreak Surveillance Team, PHE

Case numbers, testing numbers and positivity, Kirklees : 01 Sep to 03 Jan 2021



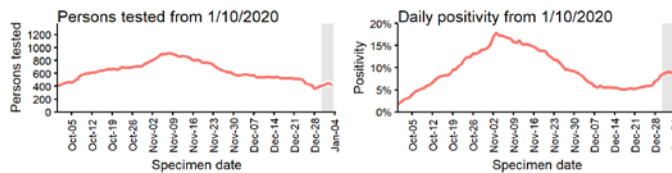
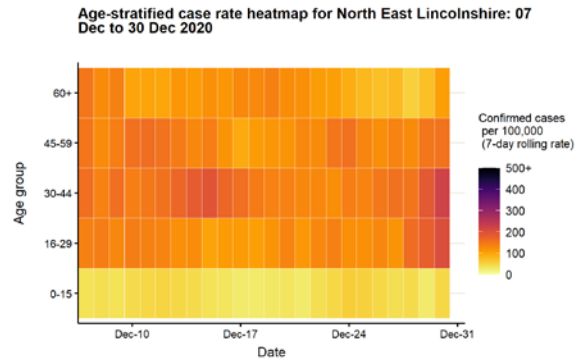
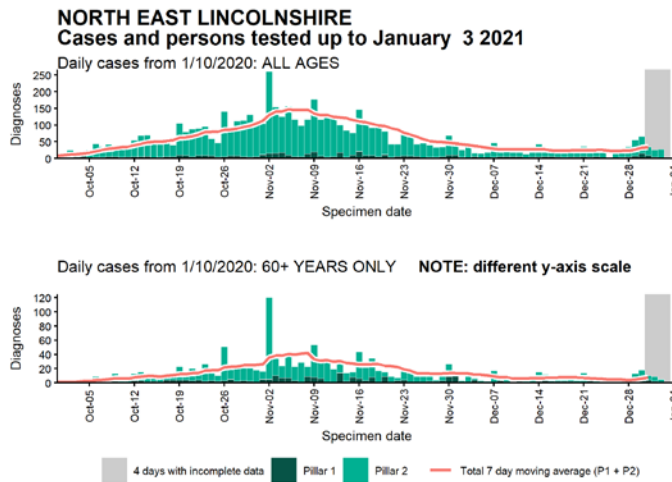
Data from SGSS. Produced by Outbreak Surveillance Team, PHE

Case numbers, testing numbers and positivity, Leeds : 01 Sep to 03 Jan 2021



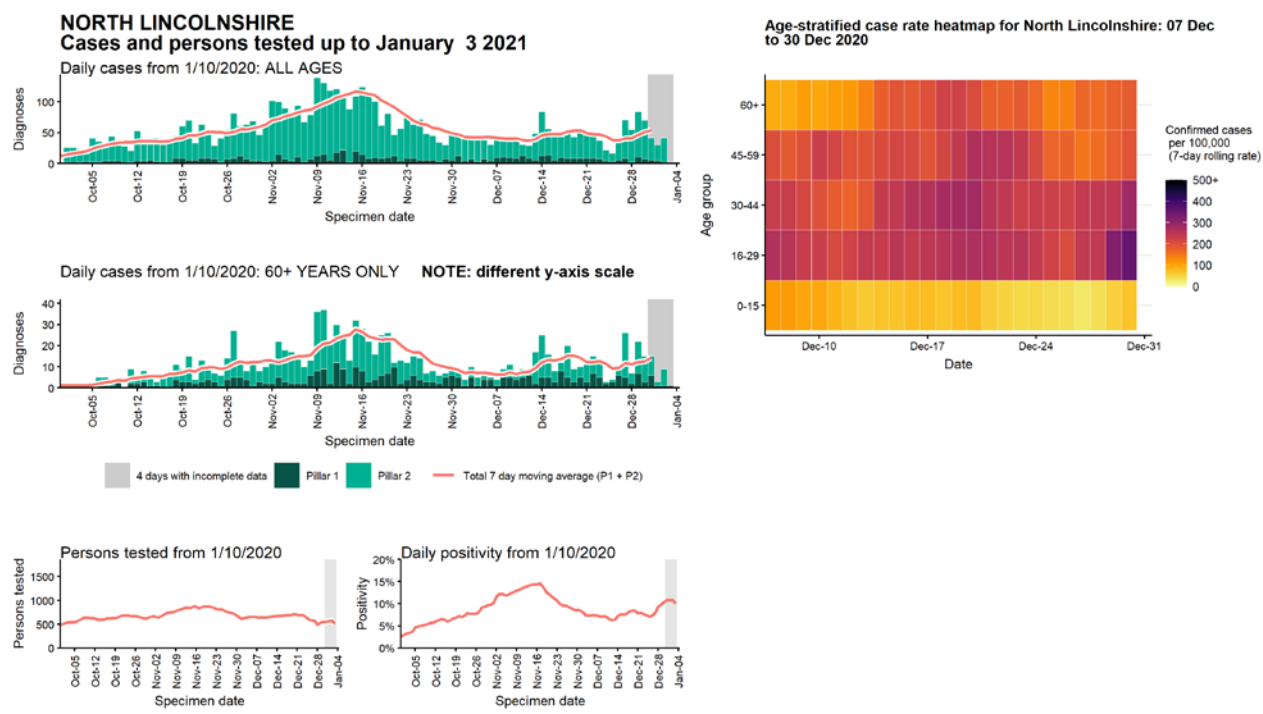
Data from SGSS. Produced by Outbreak Surveillance Team, PHE

Case numbers, testing numbers and positivity, North East Lincolnshire : 01 Sep to 03 Jan 2021



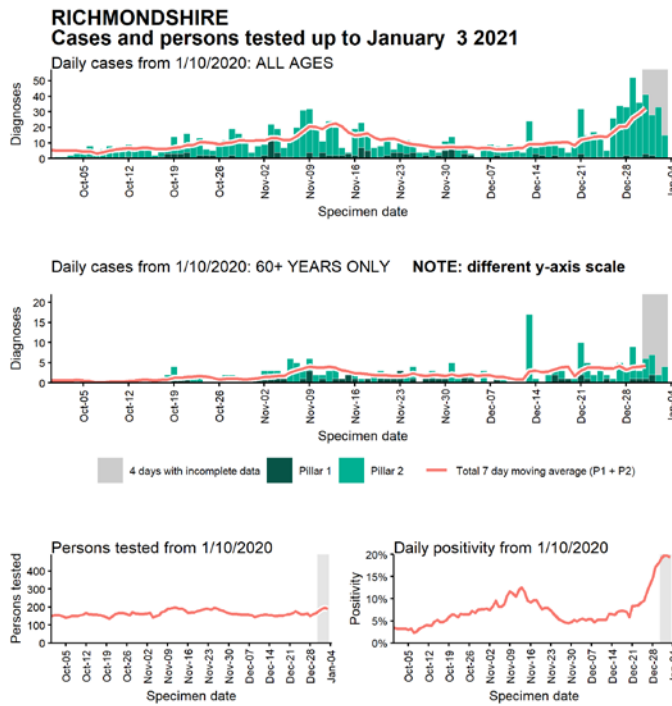
Data from SGSS. Produced by Outbreak Surveillance Team, PHE

Case numbers, testing numbers and positivity, North Lincolnshire : 01 Sep to 03 Jan 2021

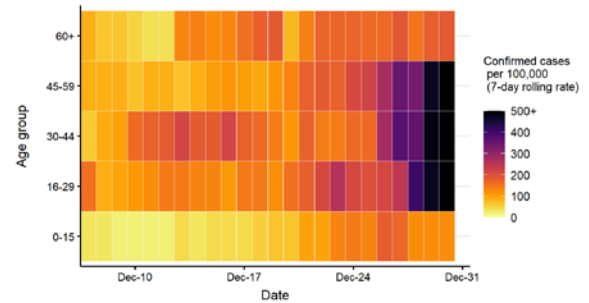


Data from SGSS. Produced by Outbreak Surveillance Team, PHE

Case numbers, testing numbers and positivity, Richmondshire : 01 Sep to 03 Jan 2021

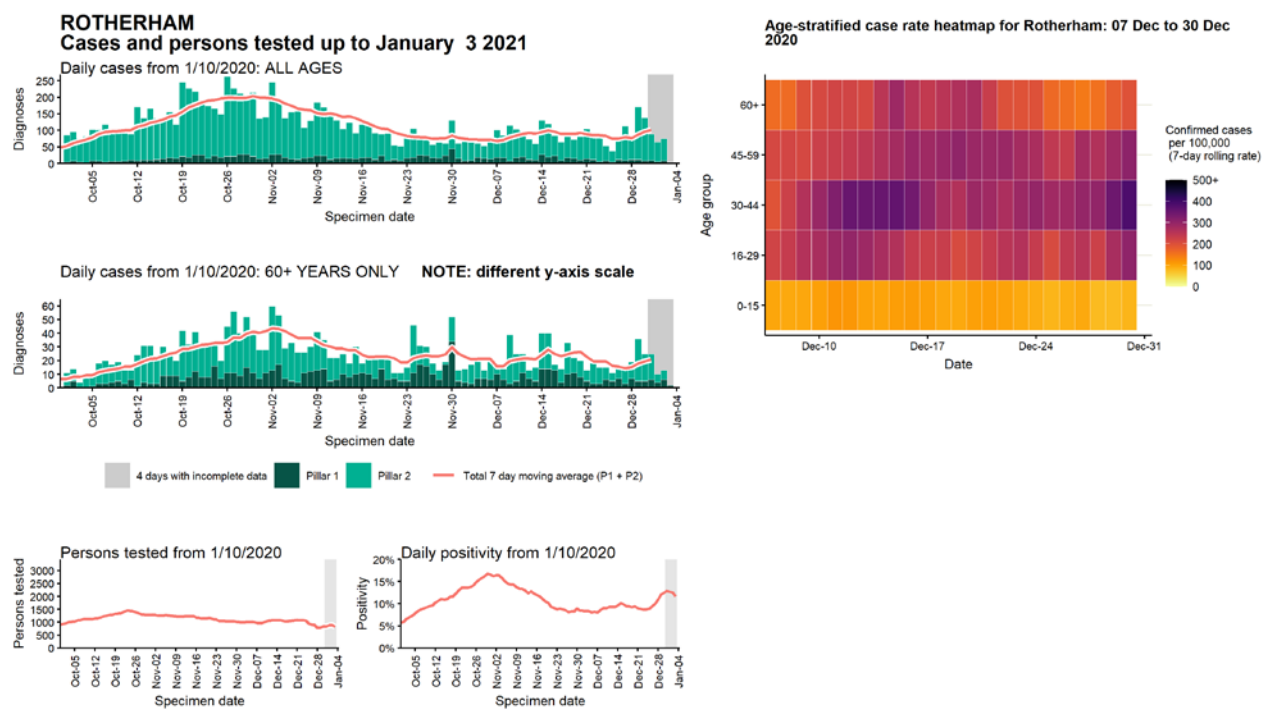


Age-stratified case rate heatmap for Richmondshire: 07 Dec to 30 Dec 2020



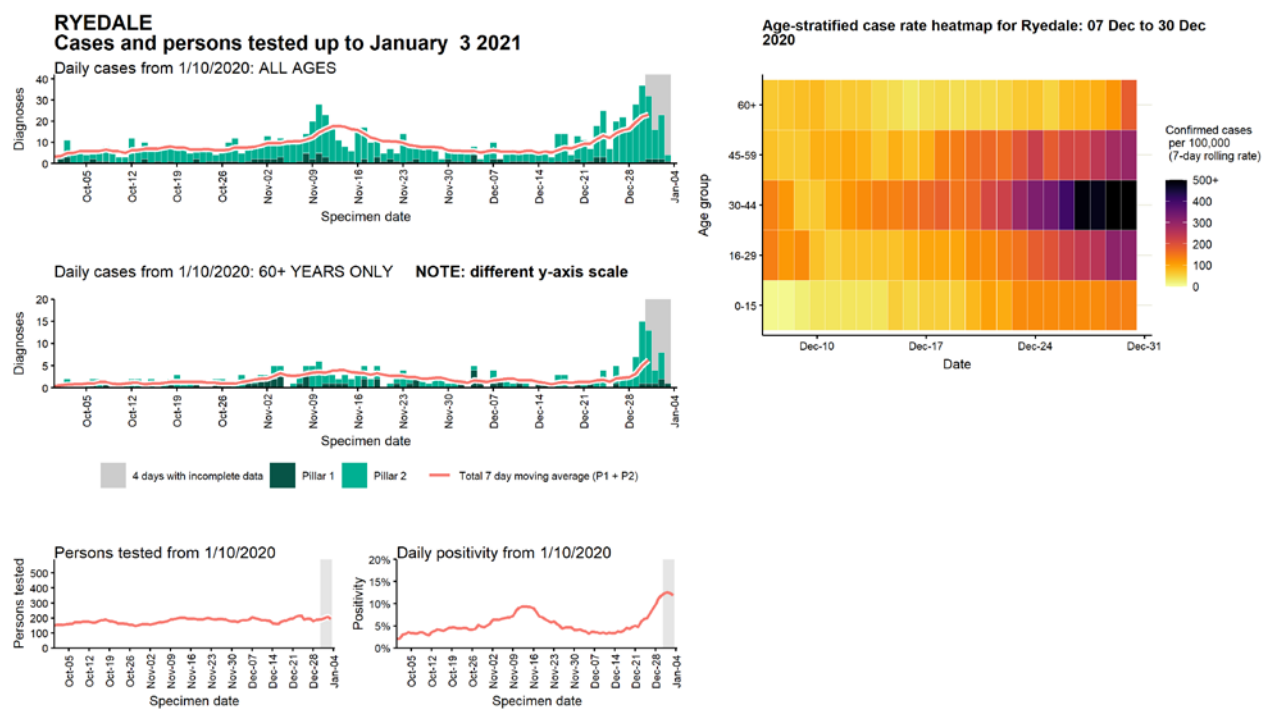
Data from SGSS. Produced by Outbreak Surveillance Team, PHE

Case numbers, testing numbers and positivity, Rotherham : 01 Sep to 03 Jan 2021

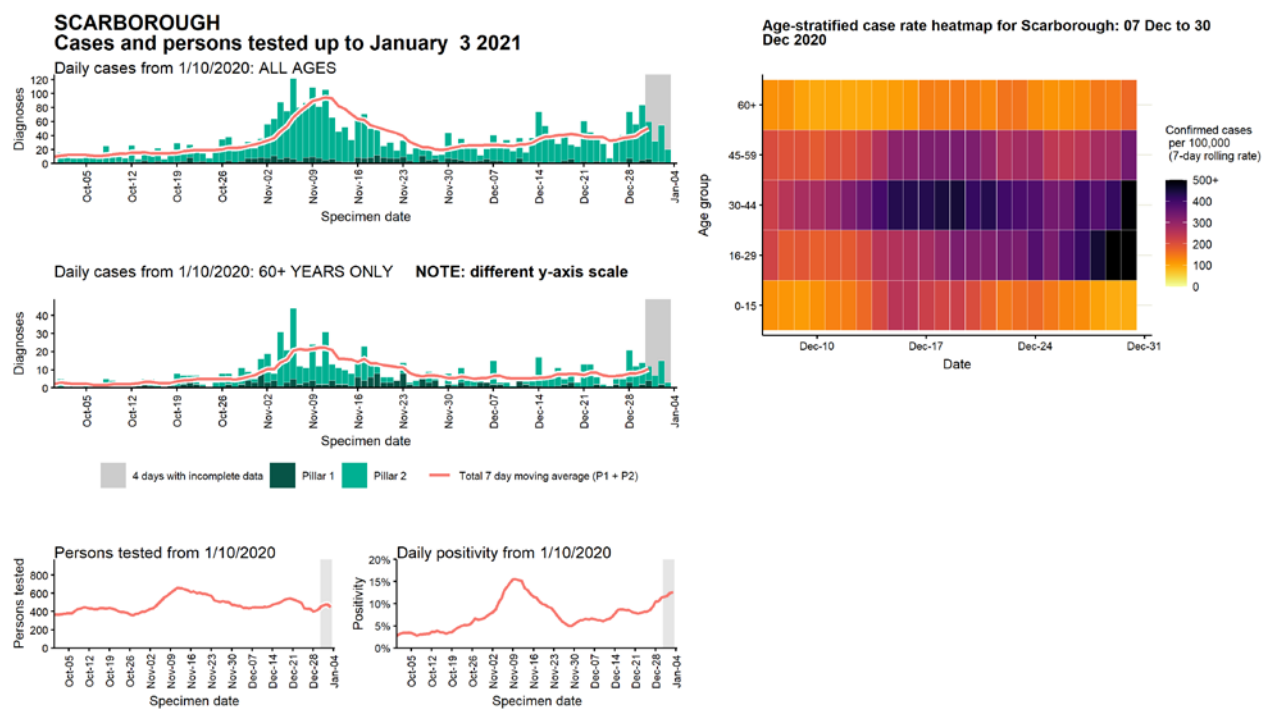


Data from SGSS. Produced by Outbreak Surveillance Team, PHE

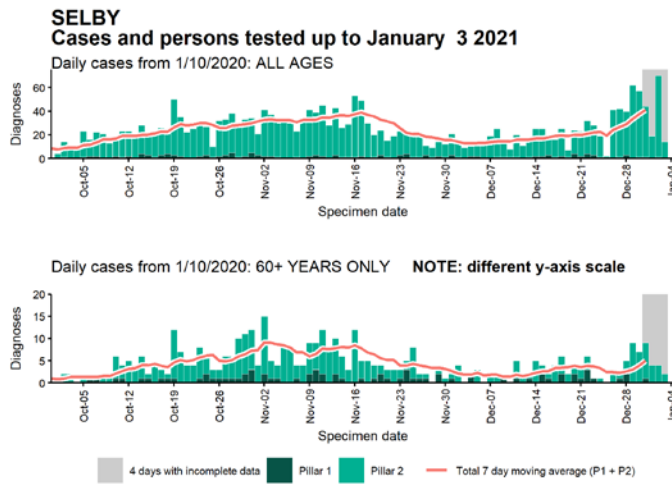
Case numbers, testing numbers and positivity, Ryedale : 01 Sep to 03 Jan 2021



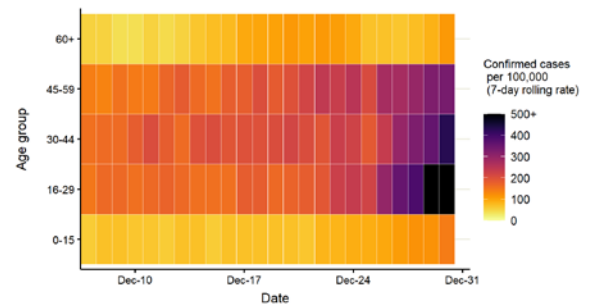
Case numbers, testing numbers and positivity, Scarborough : 01 Sep to 03 Jan 2021



Case numbers, testing numbers and positivity, Selby : 01 Sep to 03 Jan 2021

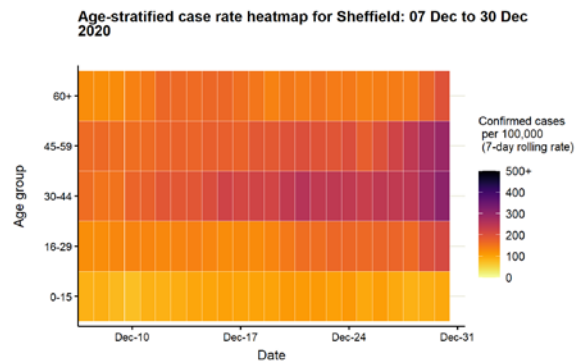
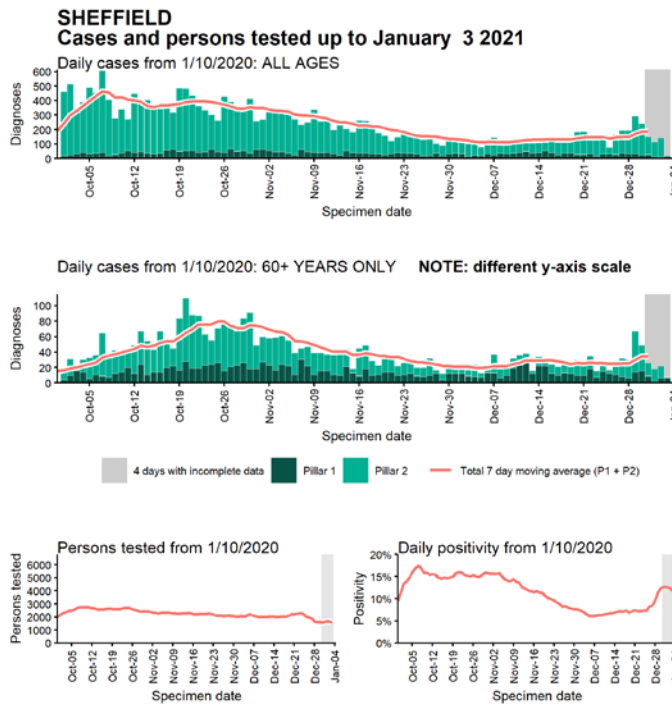


Age-stratified case rate heatmap for Selby: 07 Dec to 30 Dec 2020



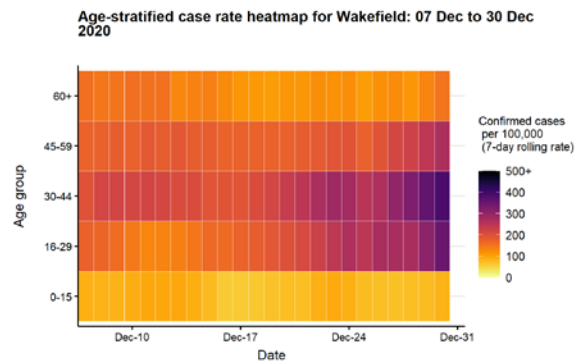
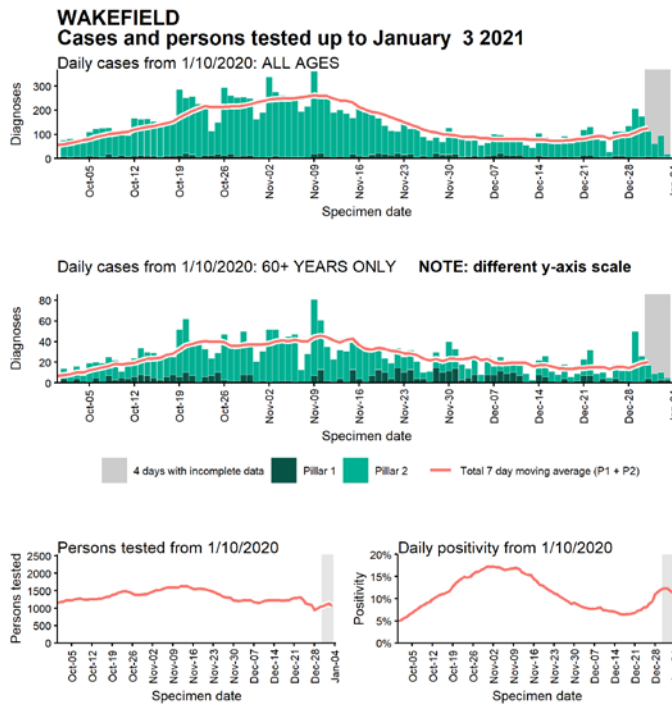
Data from SGSS. Produced by Outbreak Surveillance Team, PHE

Case numbers, testing numbers and positivity, Sheffield : 01 Sep to 03 Jan 2021



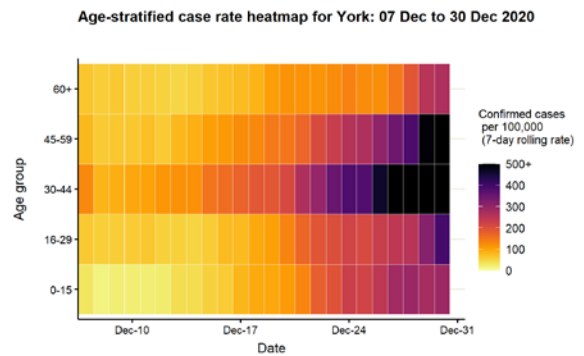
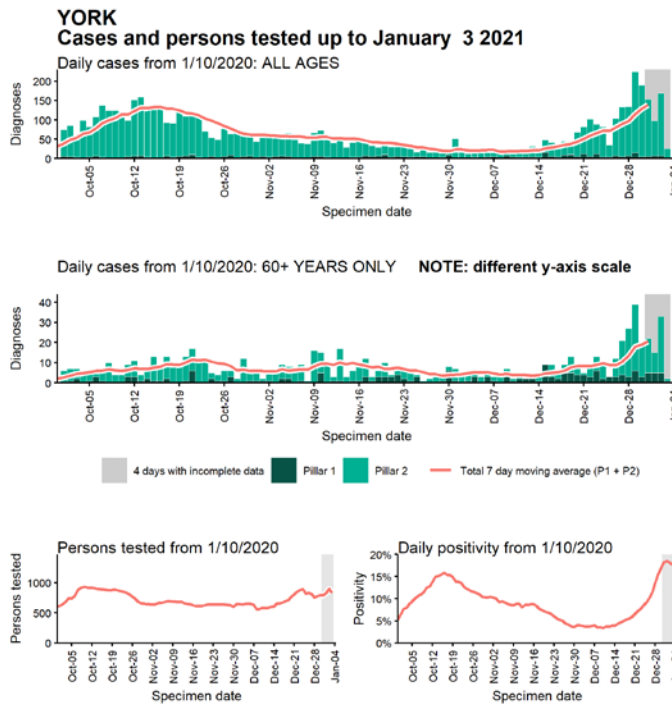
Data from SGSS. Produced by Outbreak Surveillance Team, PHE

Case numbers, testing numbers and positivity, Wakefield : 01 Sep to 03 Jan 2021



Data from SGSS. Produced by Outbreak Surveillance Team, PHE

Case numbers, testing numbers and positivity, York : 01 Sep to 03 Jan 2021



Data from SGSS. Produced by Outbreak Surveillance Team, PHE

© Crown copyright 2020

www.gov.uk/dhsc

This publication is licensed under the terms of the Open Government Licence v3.0 except where otherwise stated. To view this licence, visit nationalarchives.gov.uk/doc/open-government-licence/version/3

Where we have identified any third party copyright information you will need to obtain permission from the copyright holders concerned.

