



Department
of Health &
Social Care

West Midlands: lower tier local authority watchlist – epidemiological charts

Produced 04 January 2021

NOTES

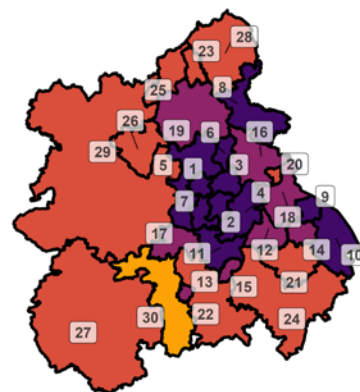
- This data is provided by Public Health England for the purpose of monitoring and supporting the management of Covid-19 infections in Local Authorities.
- The reports are produced using 2019 ONS population data
- If you would like to know the weekly trend for the case rate charts and persons tested chart please see Lower-tier local authority watchlist.

Weekly case rate per 100,000 population by local authority: 24 Dec to 30 Dec 2020

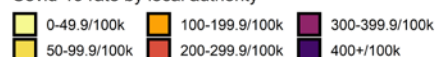
Rank	Local Authority	Case Rate (per 100,000)	Number of cases (1 week)
1	Wolverhampton	633.0	1667
2	Sandwell	566.0	1859
3	Walsall	493.2	1408
4	Birmingham	491.1	5608
5	South Staffordshire	474.9	534
6	Cannock Chase	474.4	478
7	Dudley	467.7	1504
8	East Staffordshire	443.4	531
9	Nuneaton and Bedworth	419.6	545
10	Rugby	414.9	452
11	Bromsgrove	412.5	412
12	Solihull	376.2	814
13	Worcester	369.5	374
14	Coventry	360.7	1340
15	Redditch	349.5	298

Rank	Local Authority	Case Rate (per 100,000)	Number of cases (1 week)
16	Lichfield	337.9	354
17	Wyre Forest	330.7	335
18	North Warwickshire	324.8	212
19	Stafford	314.0	431
20	Tamworth	299.9	230
21	Warwick	298.4	429
22	Wychavon	288.2	373
23	Stoke-on-Trent	279.7	717
24	Stratford-on-Avon	269.8	351
25	Newcastle-under-Lyme	260.4	337
26	Telford and Wrekin	257.4	463
27	Herefordshire, County of	251.6	485
28	Staffordshire Moorlands	227.6	224
29	Shropshire	216.9	701
30	Malvern Hills	185.5	146

West Midlands
COVID-19 cases: 24 Dec to 30 Dec 2020
Weekly case rates per 100,000 population by local authority



Covid-19 rate by local authority



Data from SGSS; Pillar 1 and 2 testing. Figure by Outbreak Surveillance Team, Public Health England.
Contains National Statistics data including 2019 population estimates Â© Crown copyright and database right 2020

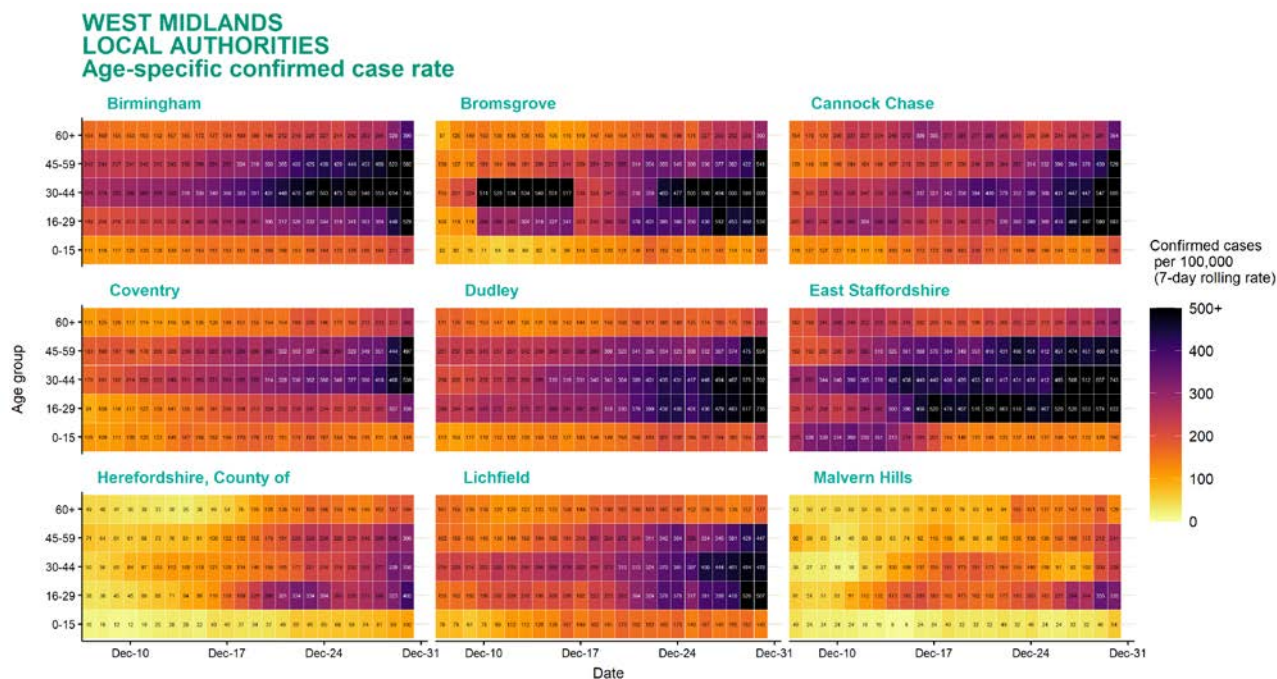
Age-stratified heatmap of weekly case rate for West Midlands : 07 Dec to 30 Dec 2020



Source: Case data from SGSS. Produced by Outbreak Surveillance Team, PHE

Contains National Statistics data Â© Crown copyright and database right 2020

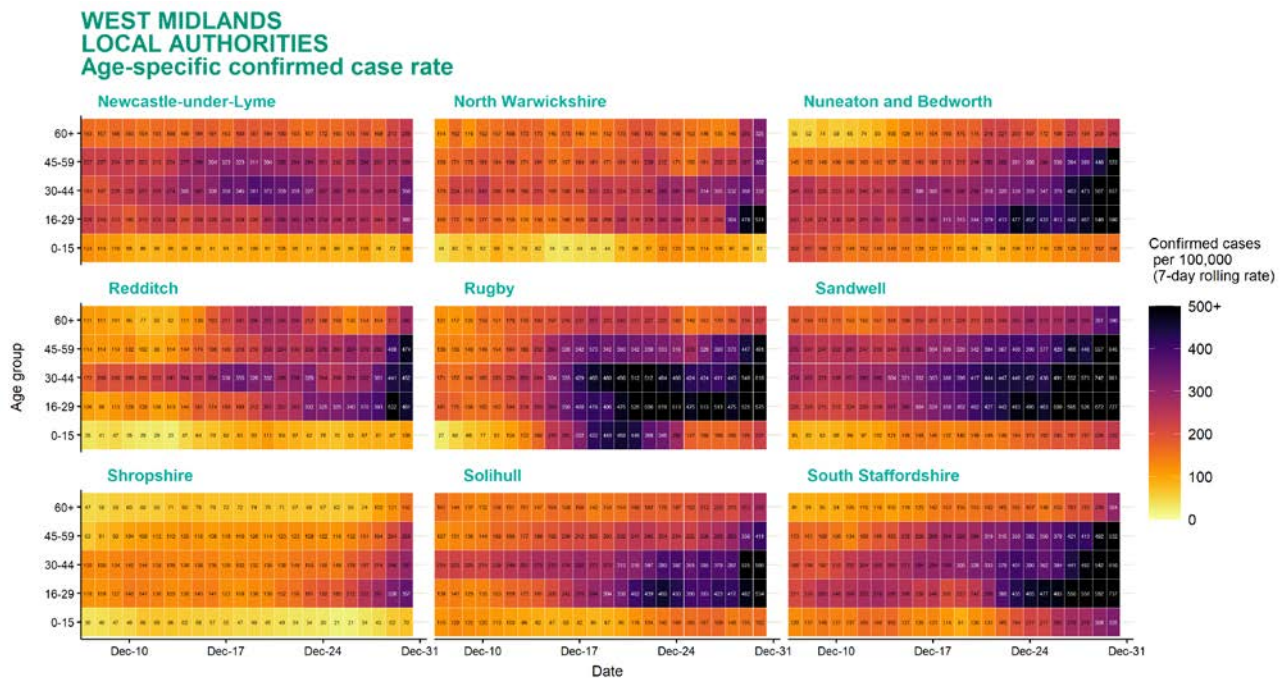
Age-stratified heatmap of weekly case rate by local authority for West Midlands : 07 Dec to 30 Dec 2020



Source: Case data from SGSS. Produced by Outbreak Surveillance Team, PHE

Contains National Statistics data Â© Crown copyright and database right 2020

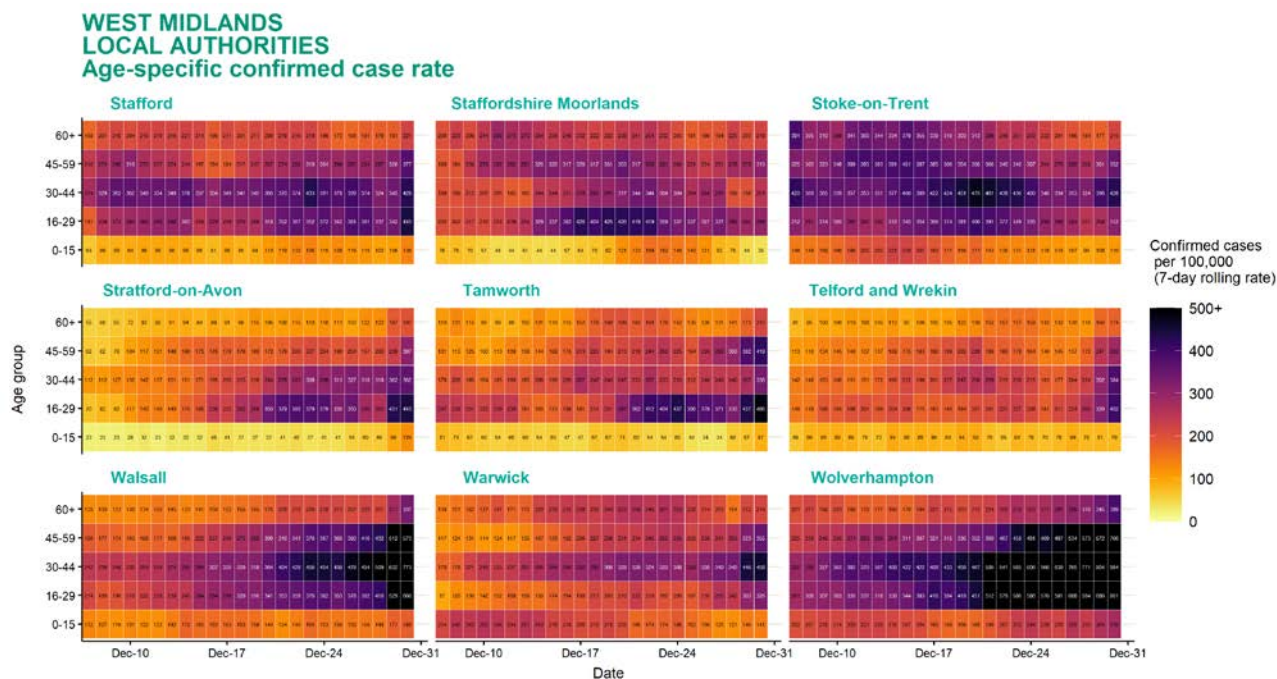
Age-stratified heatmap of weekly case rate by local authority for West Midlands : 07 Dec to 30 Dec 2020



Source: Case data from SGSS. Produced by Outbreak Surveillance Team, PHE

Contains National Statistics data Â© Crown copyright and database right 2020

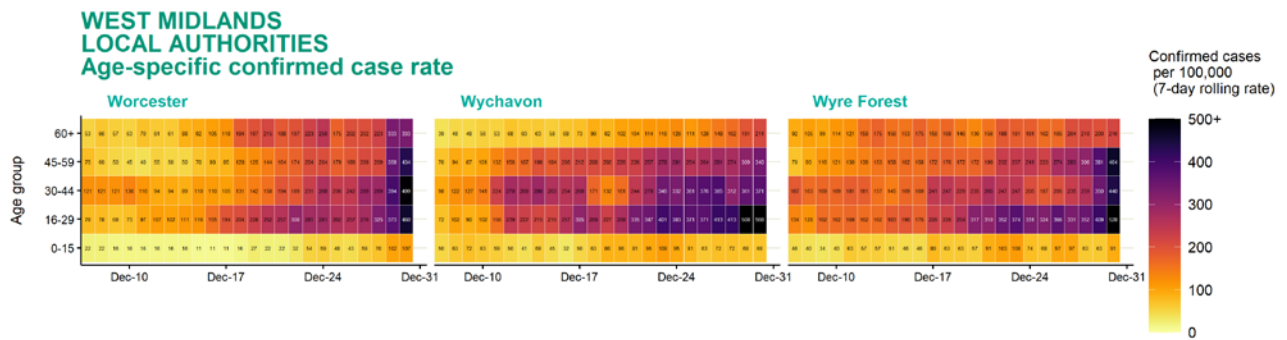
Age-stratified heatmap of weekly case rate by local authority for West Midlands : 07 Dec to 30 Dec 2020



Source: Case data from SGSS. Produced by Outbreak Surveillance Team, PHE

Contains National Statistics data Â© Crown copyright and database right 2020

Age-stratified heatmap of weekly case rate by local authority for West Midlands : 07 Dec to 30 Dec 2020

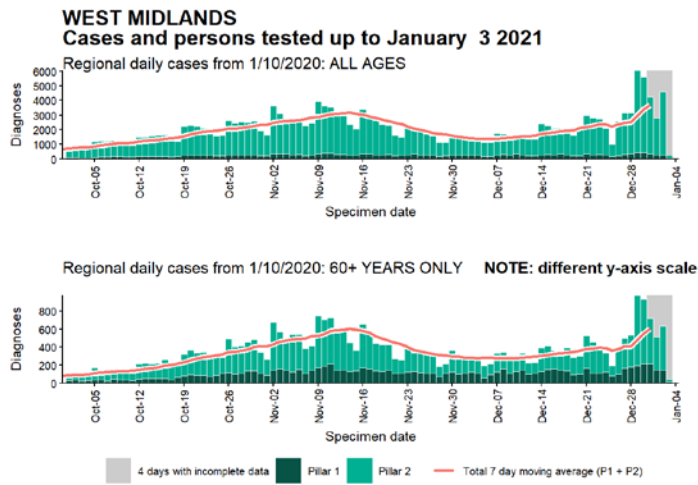


Date

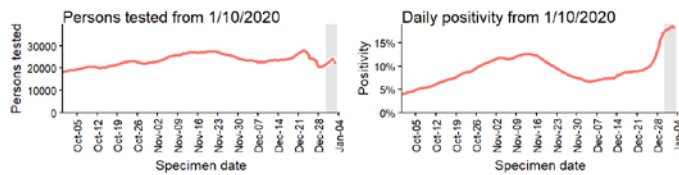
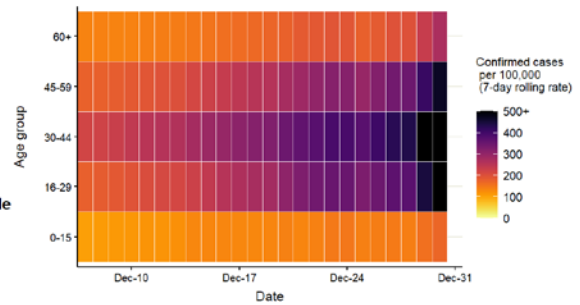
Source: Case data from SGSS. Produced by Outbreak Surveillance Team, PHE

Contains National Statistics data Â© Crown copyright and database right 2020

Regional case numbers, testing numbers and positivity, West Midlands : 01 Sep to 03 Jan 2021

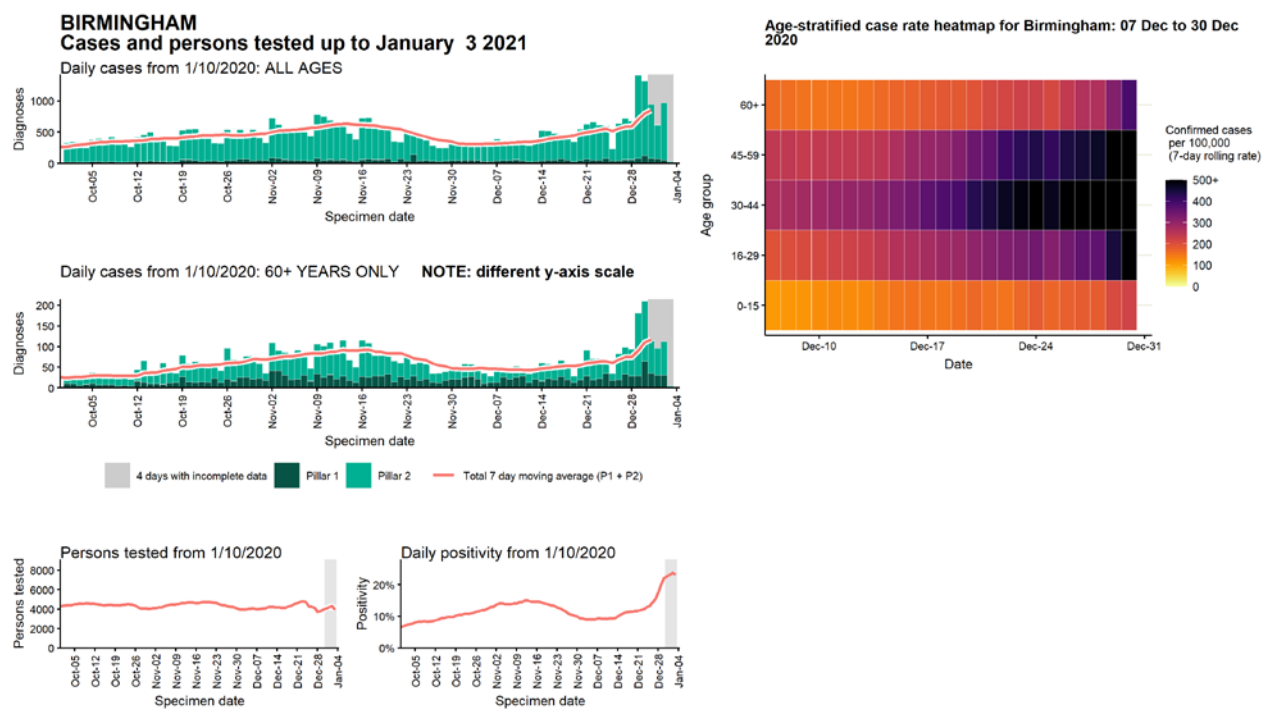


Regional age-stratified case rate heatmap for West Midlands: 07 Dec to 30 Dec 2020



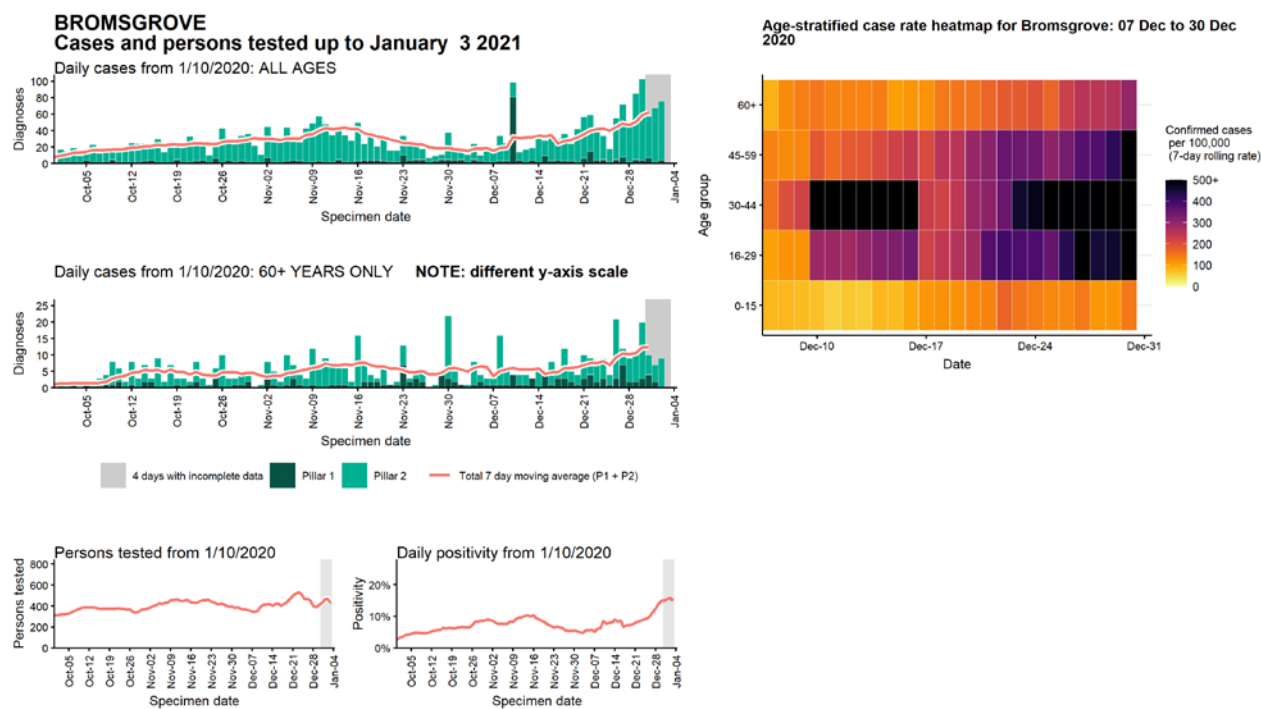
Data from SGSS. Produced by Outbreak Surveillance Team, PHE

Case numbers, testing numbers and positivity, Birmingham : 01 Sep to 03 Jan 2021

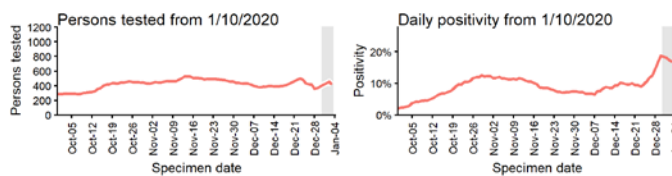
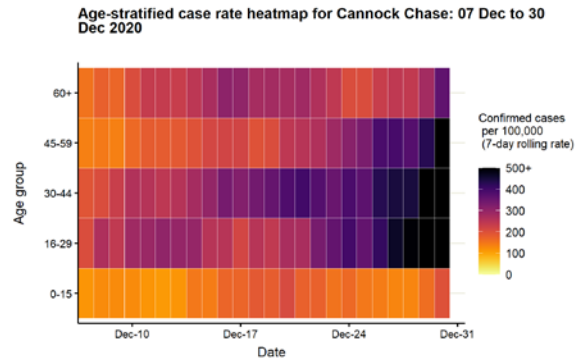
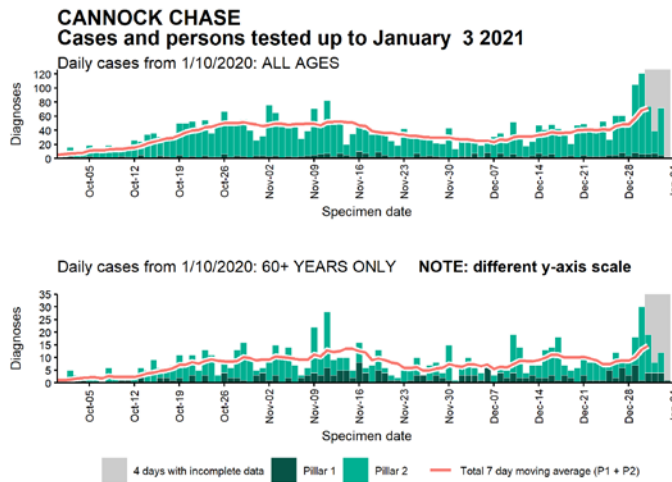


Data from SGSS. Produced by Outbreak Surveillance Team, PHE

Case numbers, testing numbers and positivity, Bromsgrove : 01 Sep to 03 Jan 2021

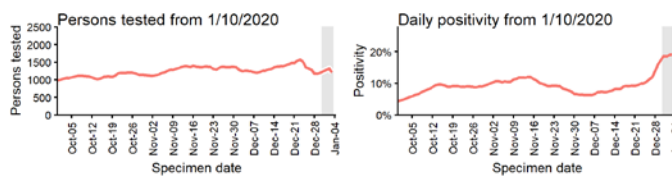
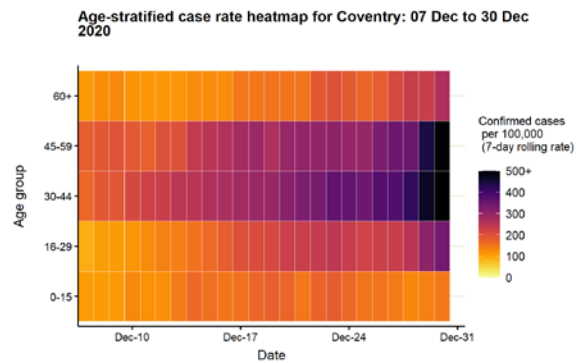
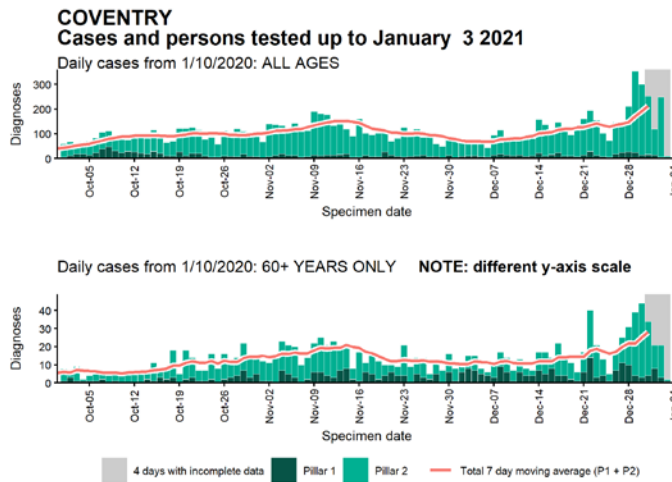


Case numbers, testing numbers and positivity, Cannock Chase : 01 Sep to 03 Jan 2021



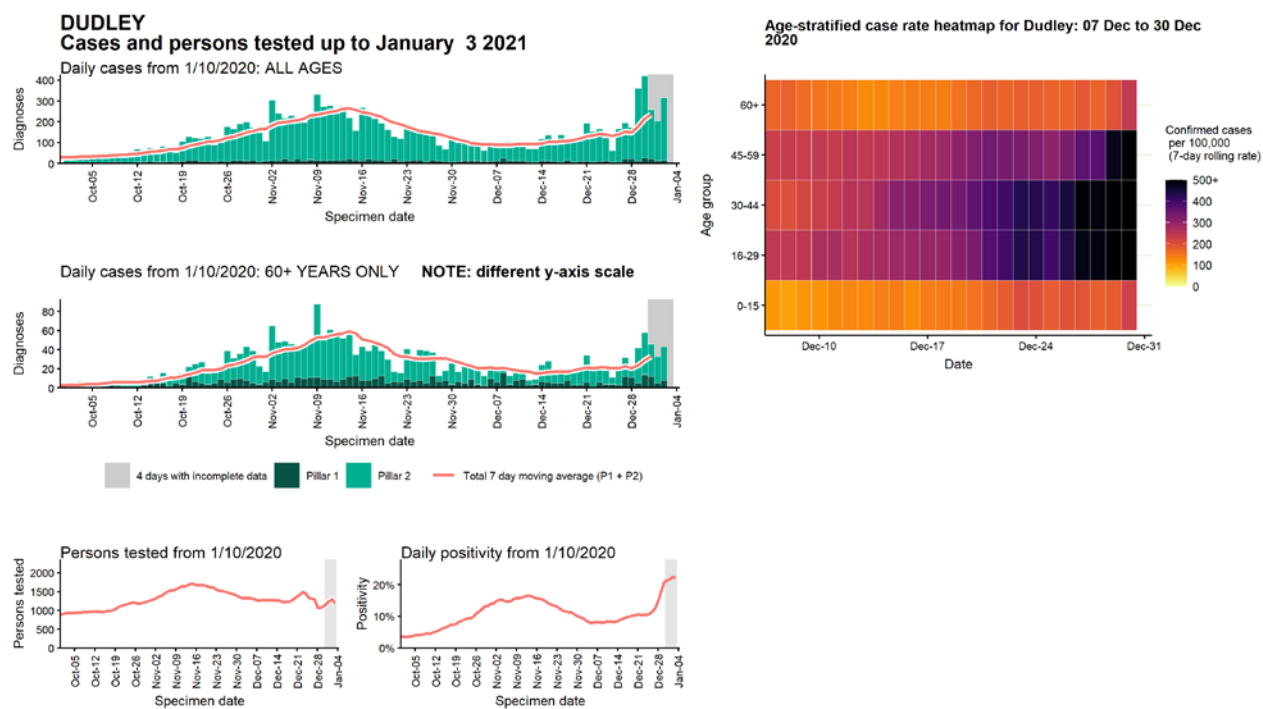
Data from SGSS. Produced by Outbreak Surveillance Team, PHE

Case numbers, testing numbers and positivity, Coventry : 01 Sep to 03 Jan 2021



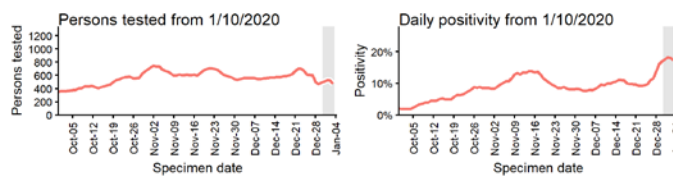
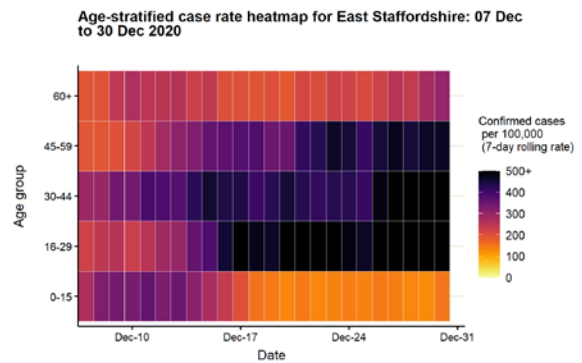
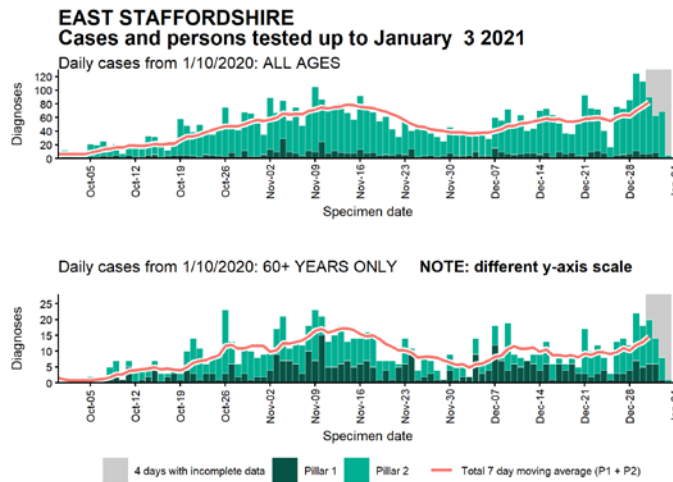
Data from SGSS. Produced by Outbreak Surveillance Team, PHE

Case numbers, testing numbers and positivity, Dudley : 01 Sep to 03 Jan 2021



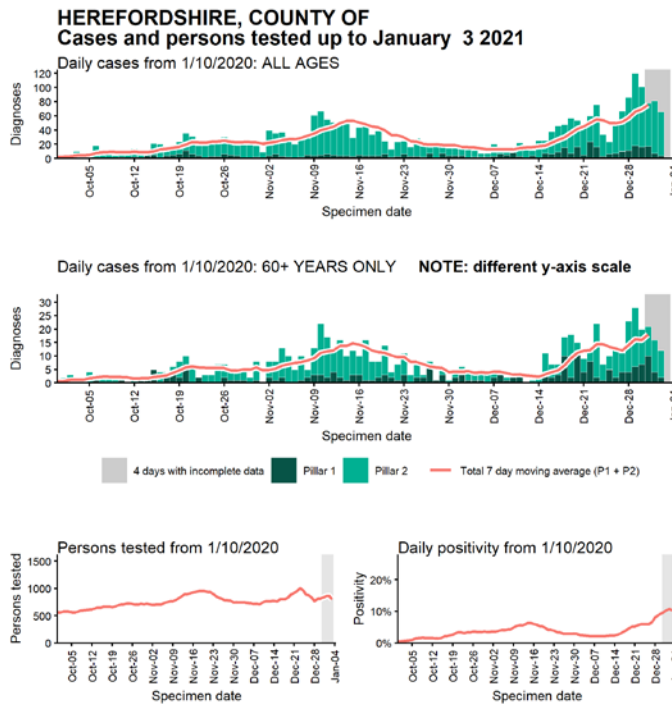
Data from SGSS. Produced by Outbreak Surveillance Team, PHE

Case numbers, testing numbers and positivity, East Staffordshire : 01 Sep to 03 Jan 2021

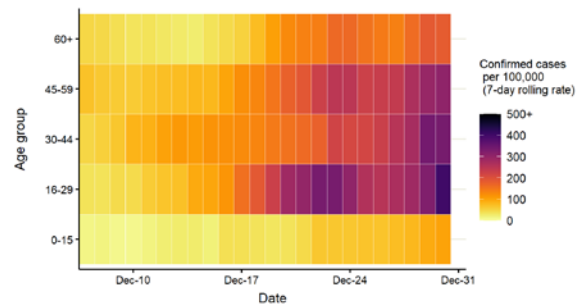


Data from SGSS. Produced by Outbreak Surveillance Team, PHE

Case numbers, testing numbers and positivity, Herefordshire, County of : 01 Sep to 03 Jan 2021

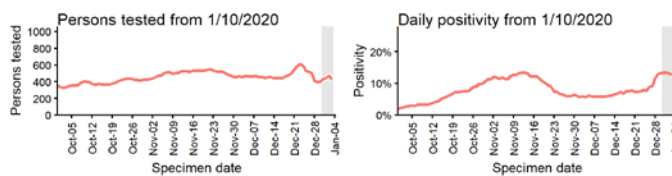
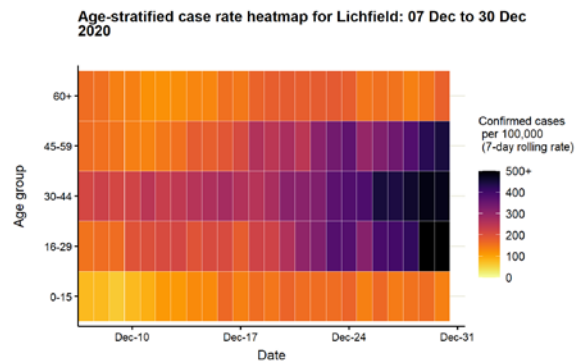
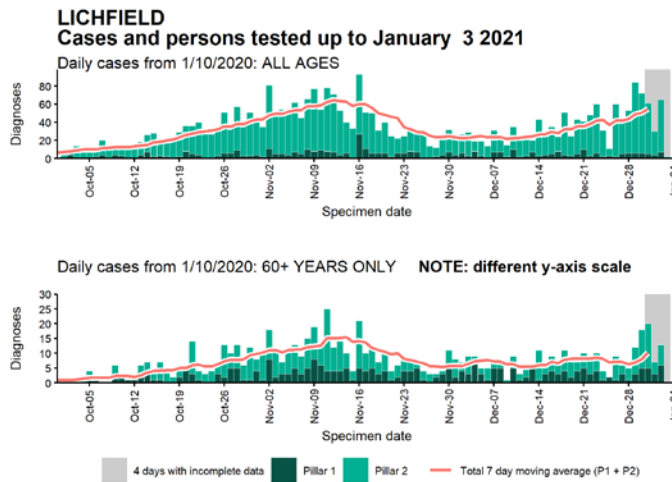


Age-stratified case rate heatmap for Herefordshire, County of: 07
 Dec to 30 Dec 2020



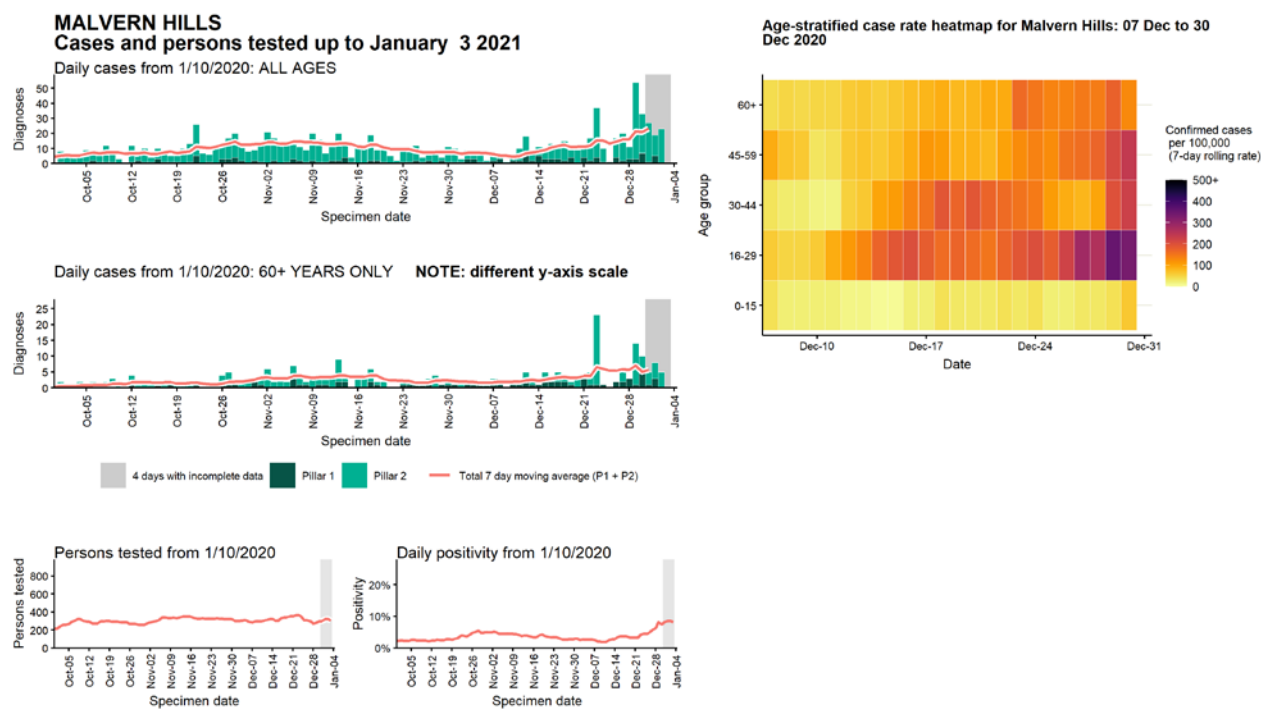
Data from SGSS. Produced by Outbreak Surveillance Team, PHE

Case numbers, testing numbers and positivity, Lichfield : 01 Sep to 03 Jan 2021



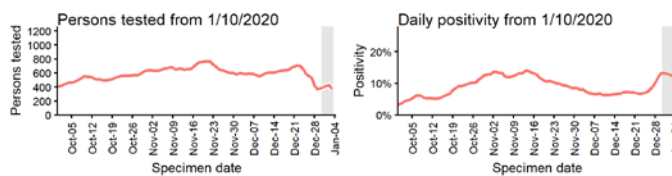
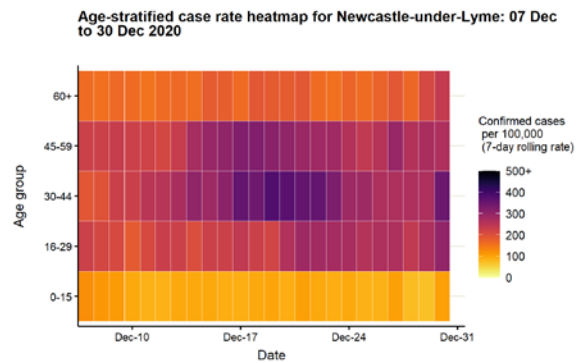
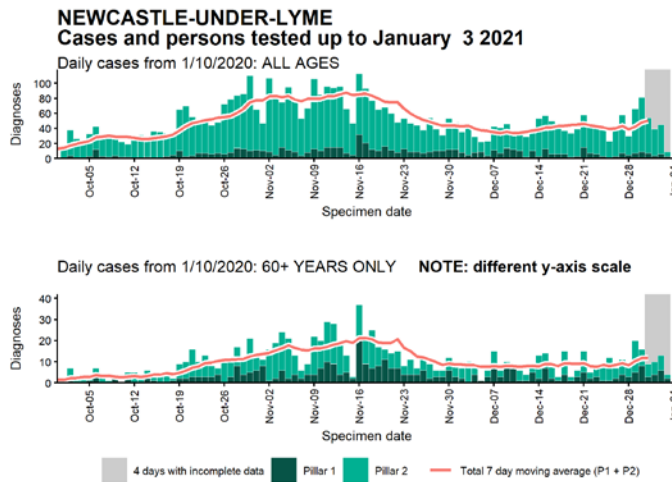
Data from SGSS. Produced by Outbreak Surveillance Team, PHE

Case numbers, testing numbers and positivity, Malvern Hills : 01 Sep to 03 Jan 2021



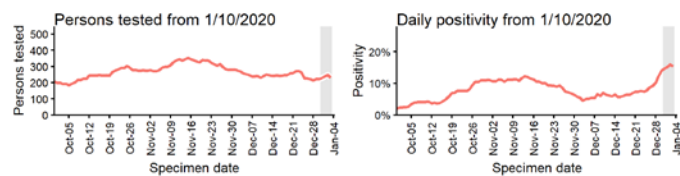
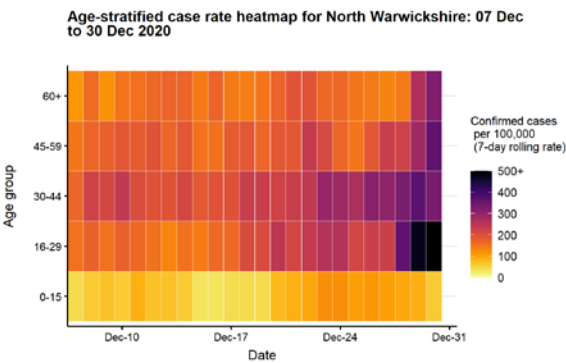
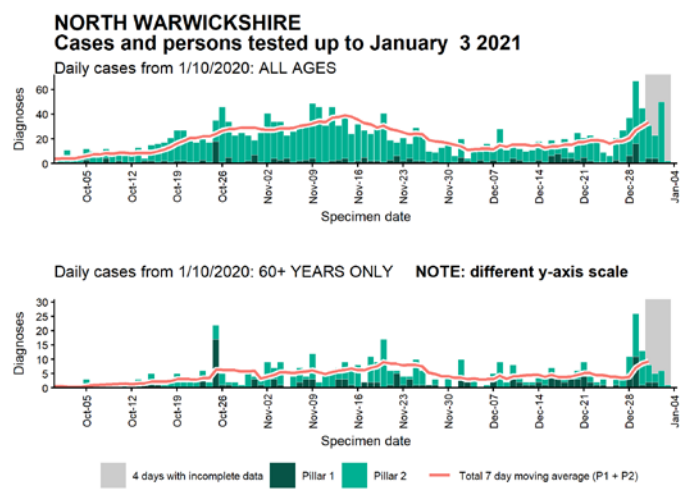
Data from SGSS. Produced by Outbreak Surveillance Team, PHE

Case numbers, testing numbers and positivity, Newcastle-under-Lyme : 01 Sep to 03 Jan 2021



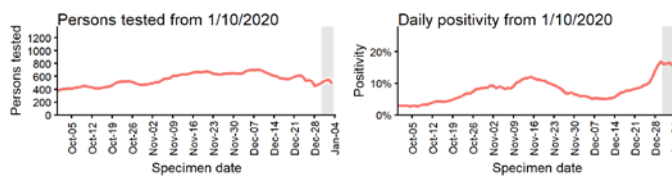
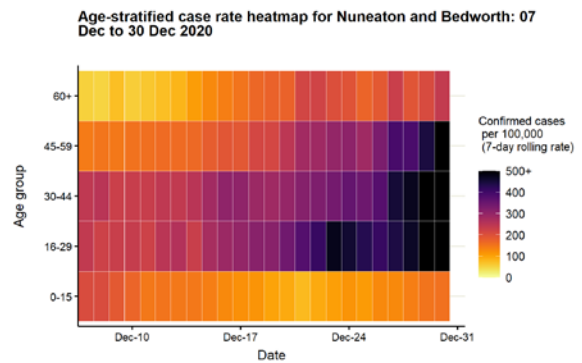
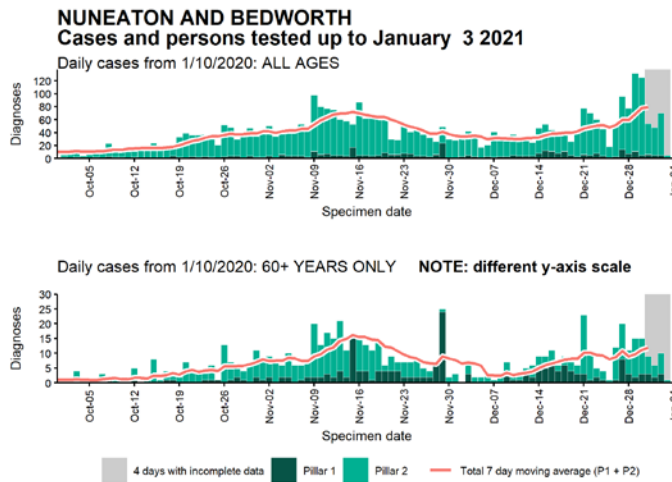
Data from SGSS. Produced by Outbreak Surveillance Team, PHE

Case numbers, testing numbers and positivity, North Warwickshire : 01 Sep to 03 Jan 2021



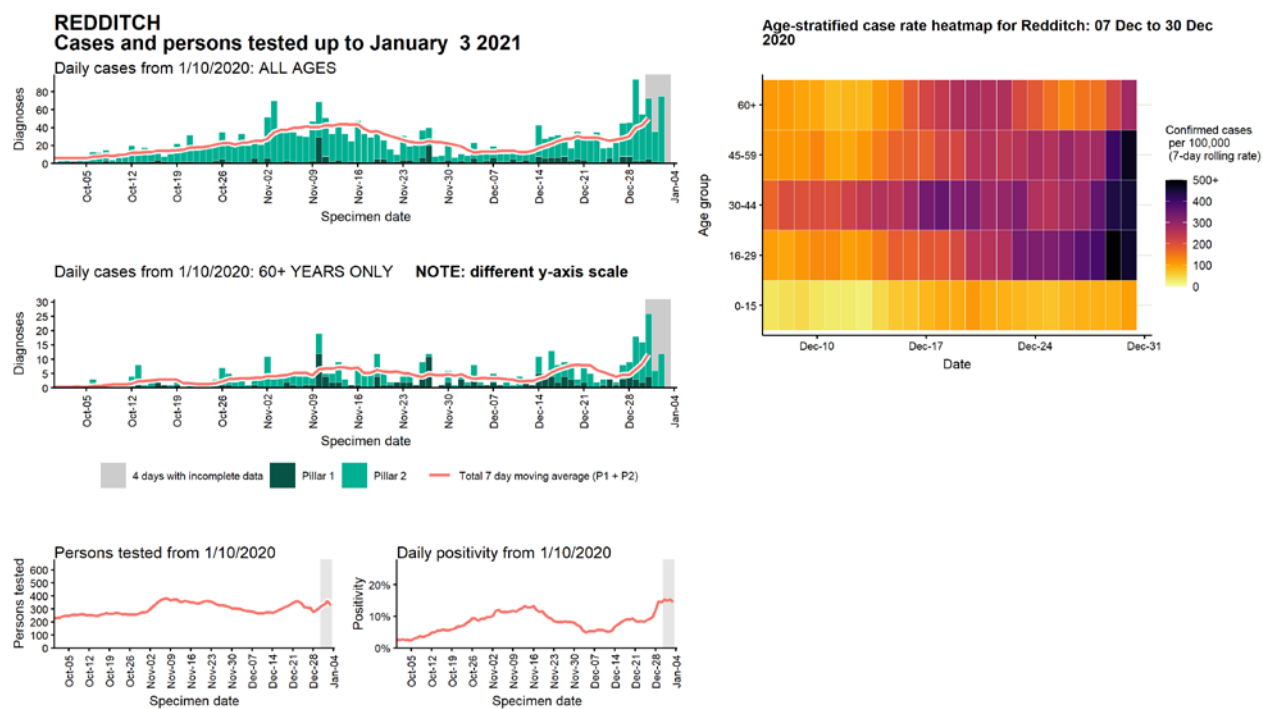
Data from SGSS. Produced by Outbreak Surveillance Team, PHE

Case numbers, testing numbers and positivity, Nuneaton and Bedworth : 01 Sep to 03 Jan 2021



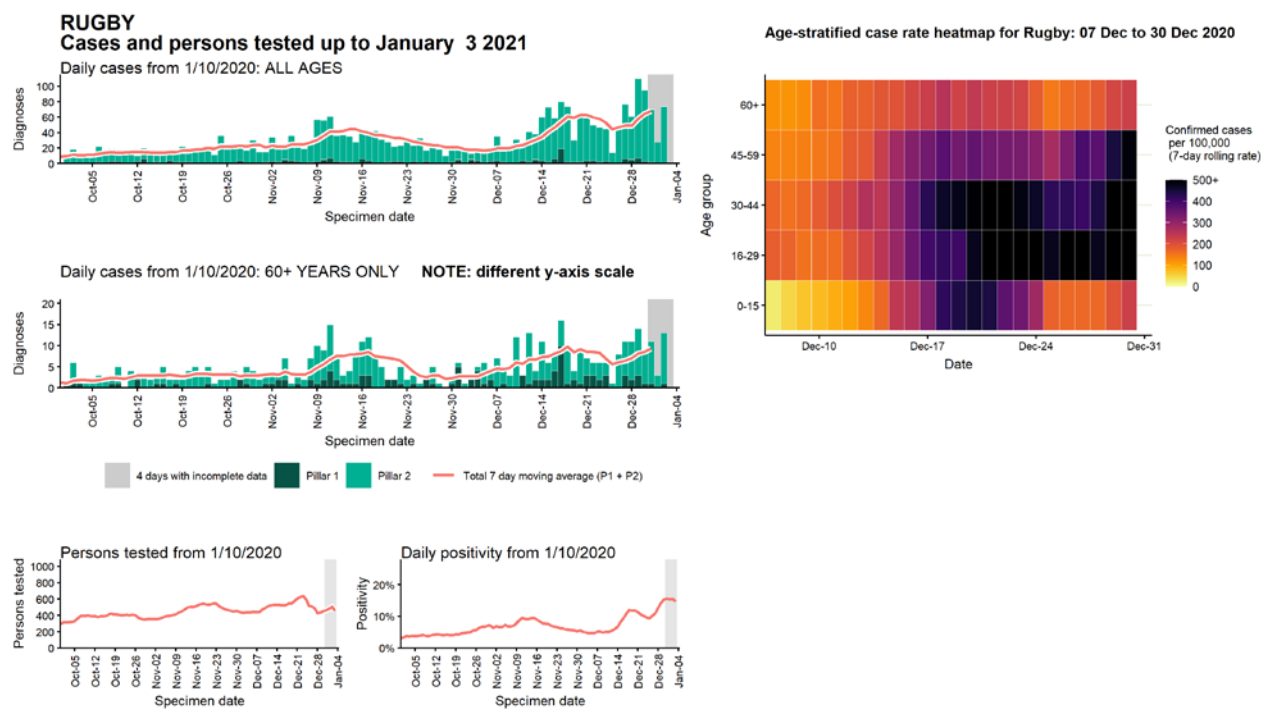
Data from SGSS. Produced by Outbreak Surveillance Team, PHE

Case numbers, testing numbers and positivity, Redditch : 01 Sep to 03 Jan 2021



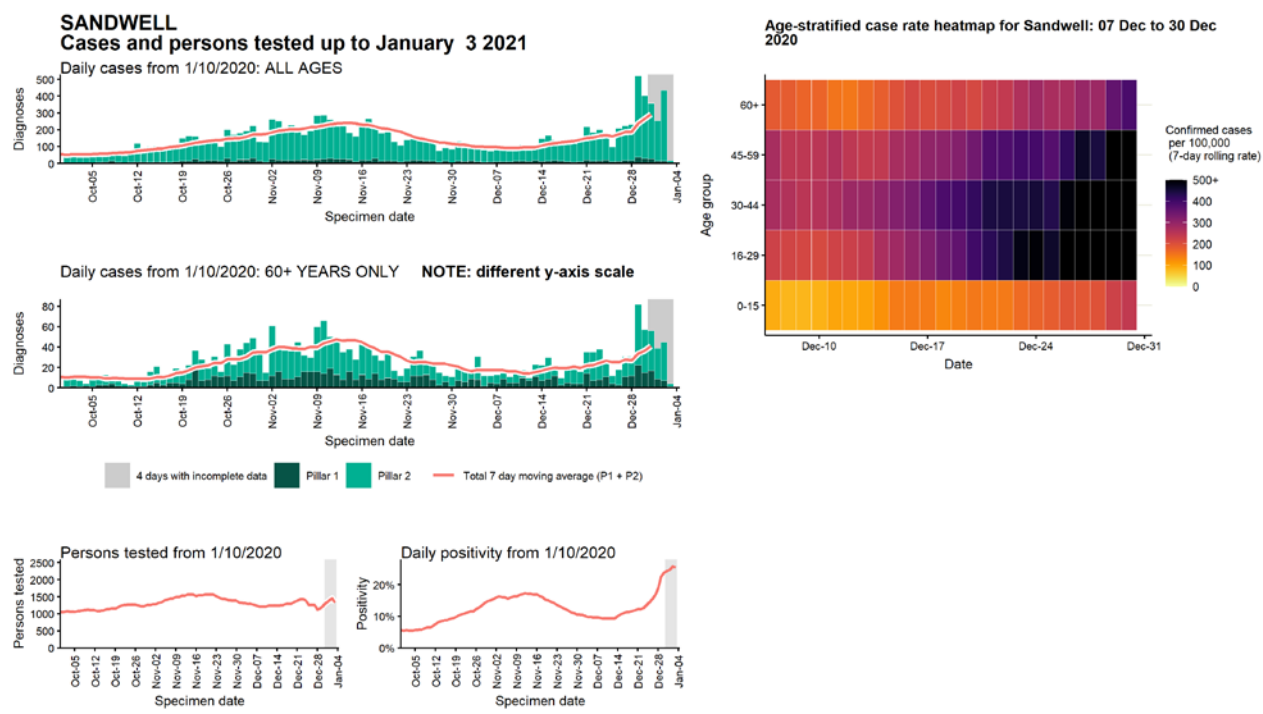
Data from SGSS. Produced by Outbreak Surveillance Team, PHE

Case numbers, testing numbers and positivity, Rugby : 01 Sep to 03 Jan 2021



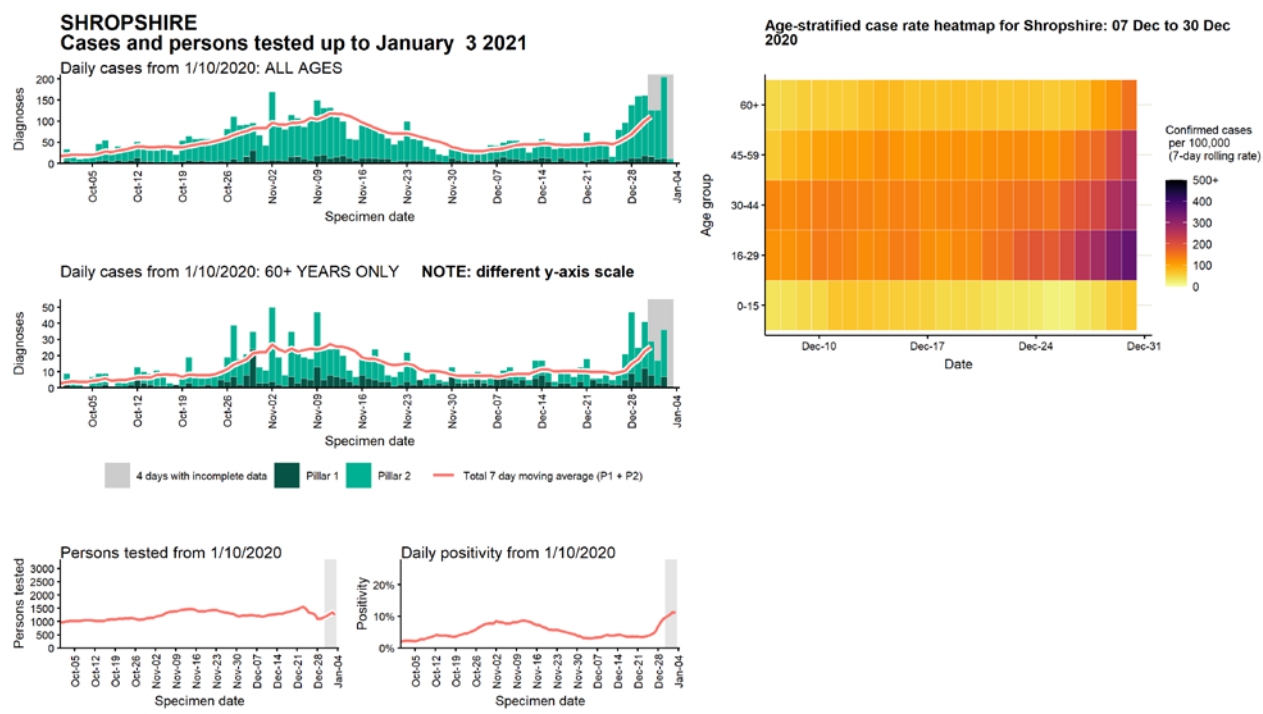
Data from SGSS. Produced by Outbreak Surveillance Team, PHE

Case numbers, testing numbers and positivity, Sandwell : 01 Sep to 03 Jan 2021



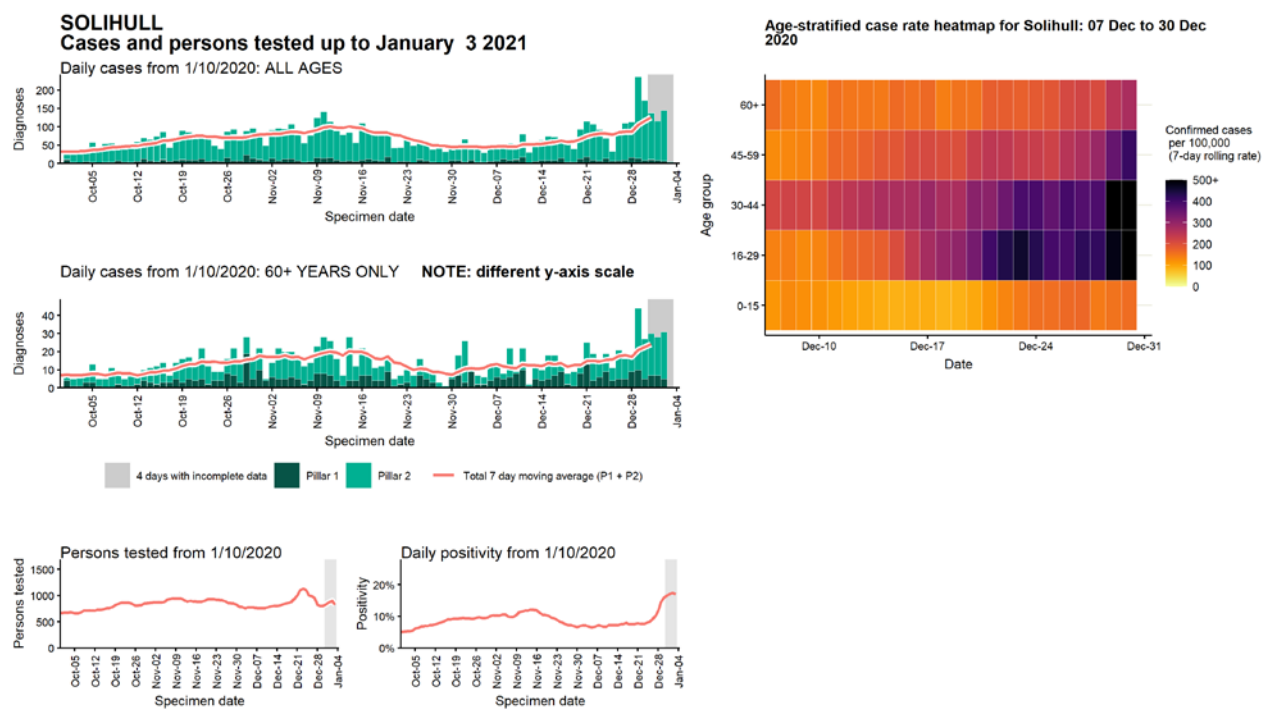
Data from SGSS. Produced by Outbreak Surveillance Team, PHE

Case numbers, testing numbers and positivity, Shropshire : 01 Sep to 03 Jan 2021



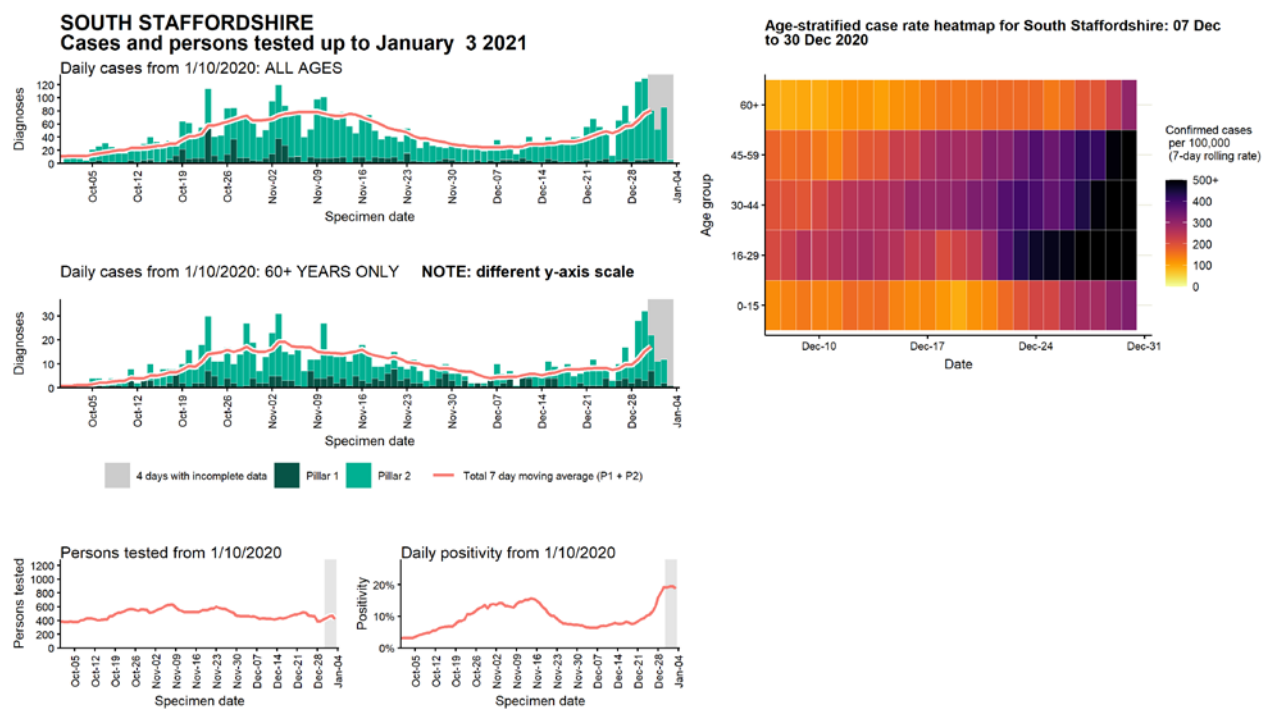
Data from SGSS. Produced by Outbreak Surveillance Team, PHE

Case numbers, testing numbers and positivity, Solihull : 01 Sep to 03 Jan 2021



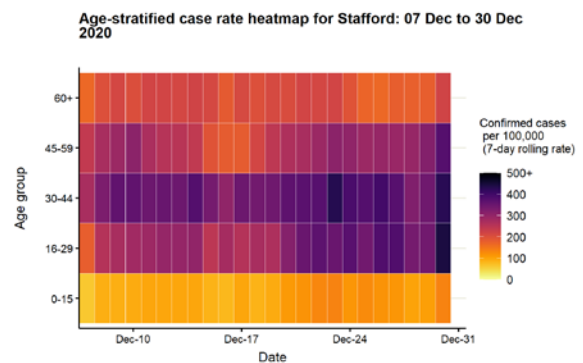
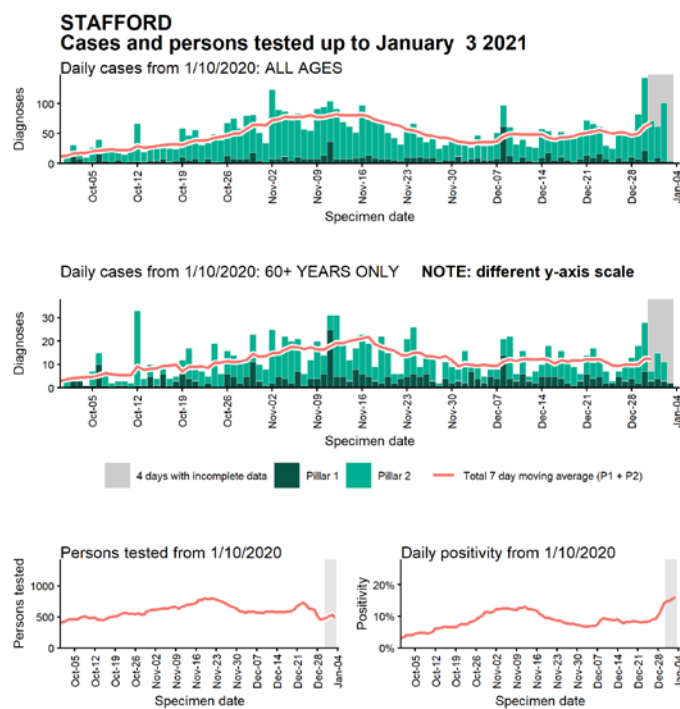
Data from SGSS. Produced by Outbreak Surveillance Team, PHE

Case numbers, testing numbers and positivity, South Staffordshire : 01 Sep to 03 Jan 2021



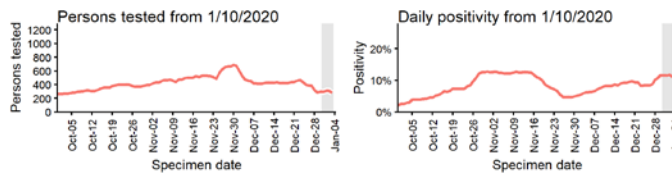
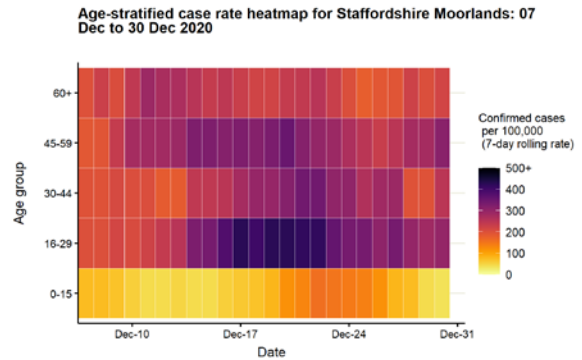
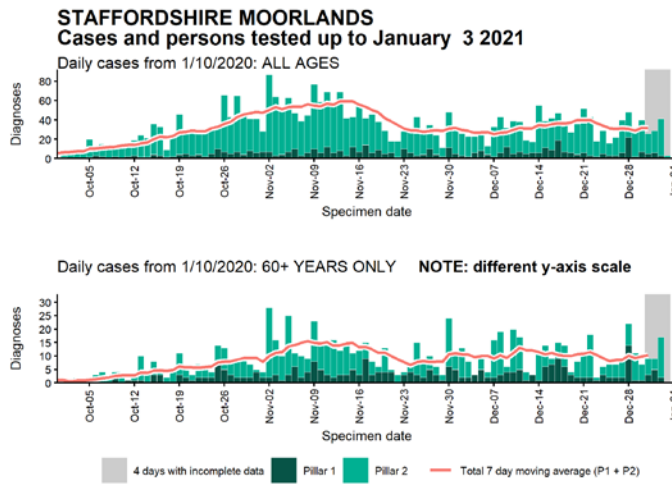
Data from SGSS. Produced by Outbreak Surveillance Team, PHE

Case numbers, testing numbers and positivity, Stafford : 01 Sep to 03 Jan 2021



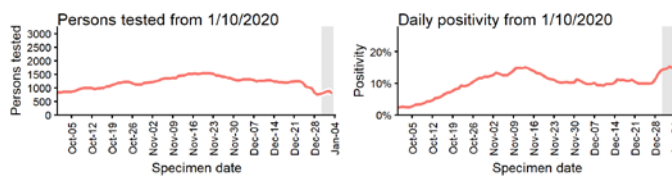
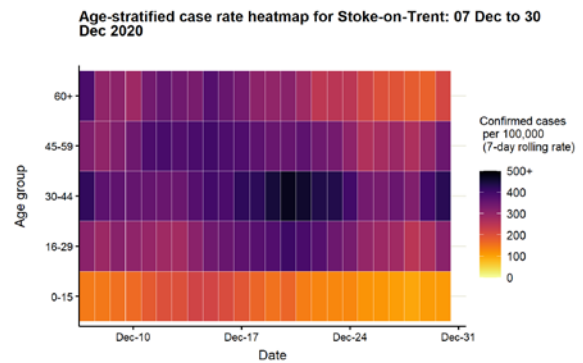
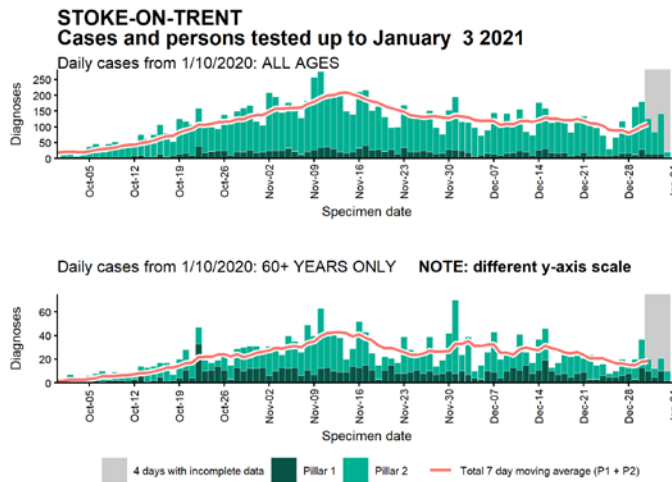
Data from SGSS. Produced by Outbreak Surveillance Team, PHE

Case numbers, testing numbers and positivity, Staffordshire Moorlands : 01 Sep to 03 Jan 2021



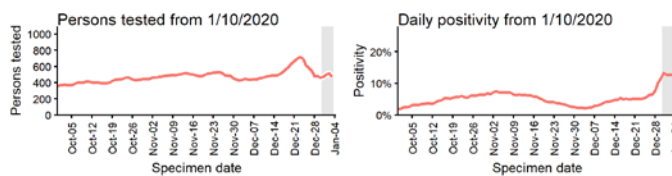
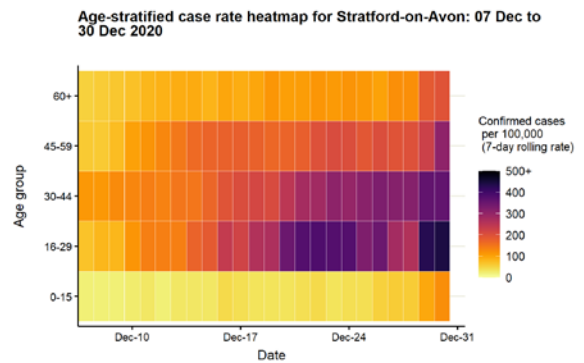
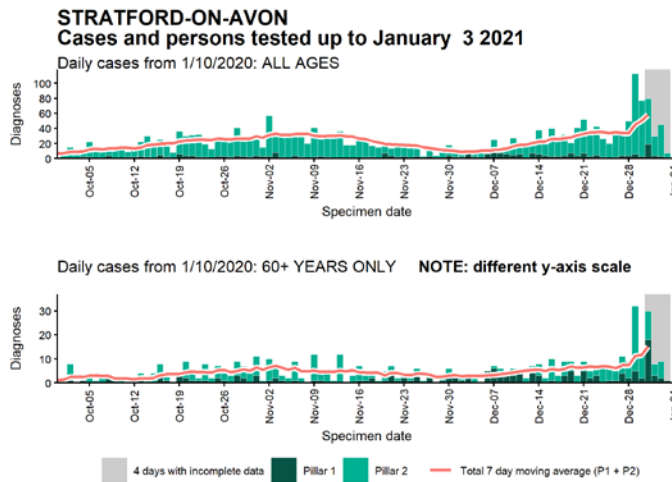
Data from SGSS. Produced by Outbreak Surveillance Team, PHE

Case numbers, testing numbers and positivity, Stoke-on-Trent : 01 Sep to 03 Jan 2021



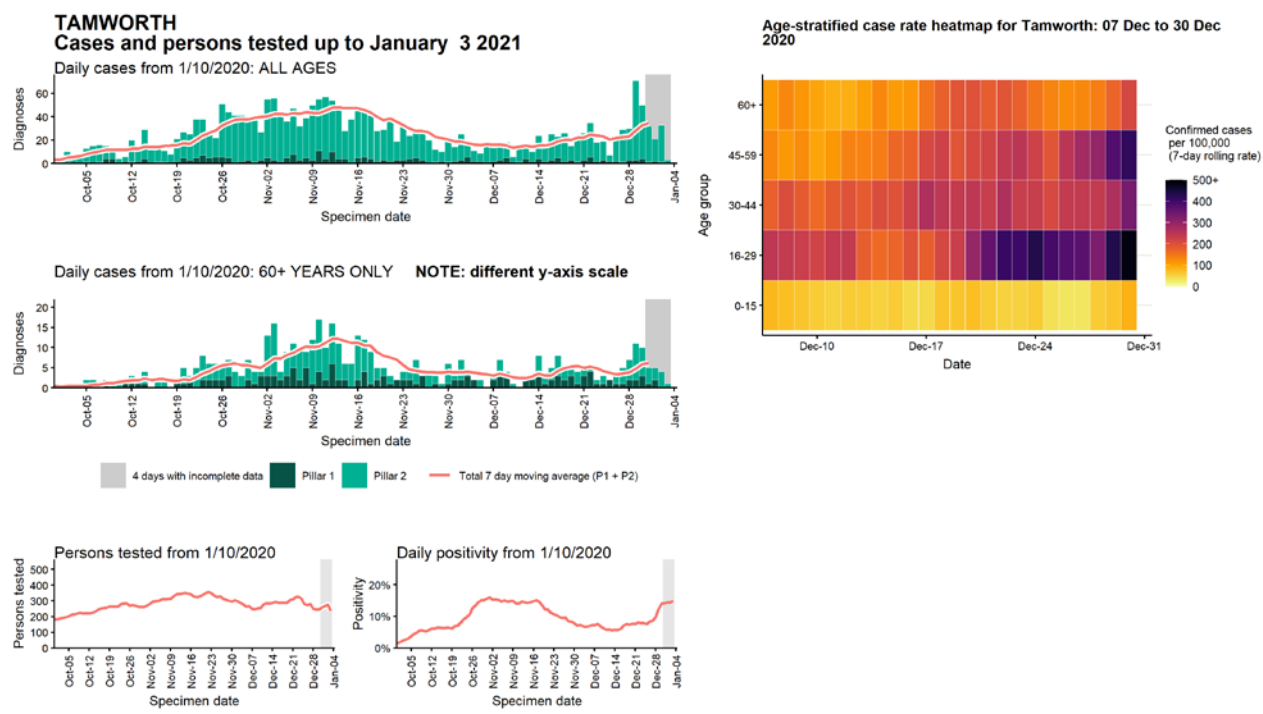
Data from SGSS. Produced by Outbreak Surveillance Team, PHE

Case numbers, testing numbers and positivity, Stratford-on-Avon : 01 Sep to 03 Jan 2021



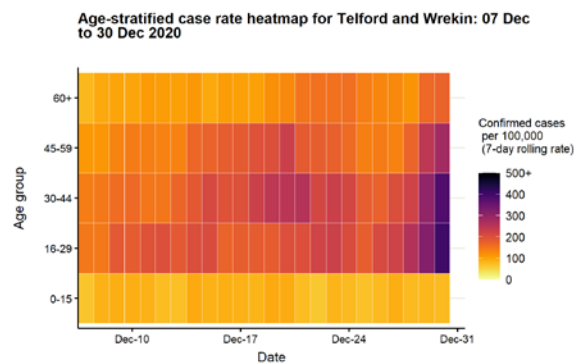
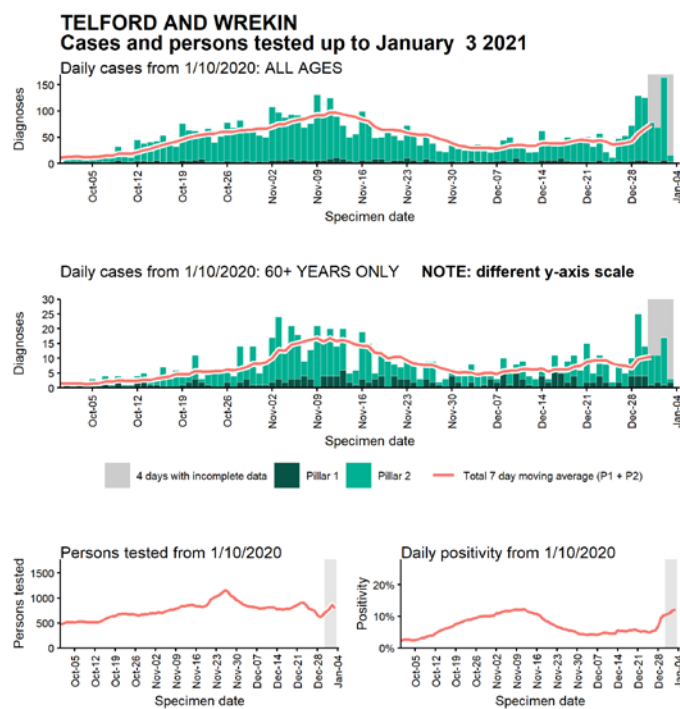
Data from SGSS. Produced by Outbreak Surveillance Team, PHE

Case numbers, testing numbers and positivity, Tamworth : 01 Sep to 03 Jan 2021



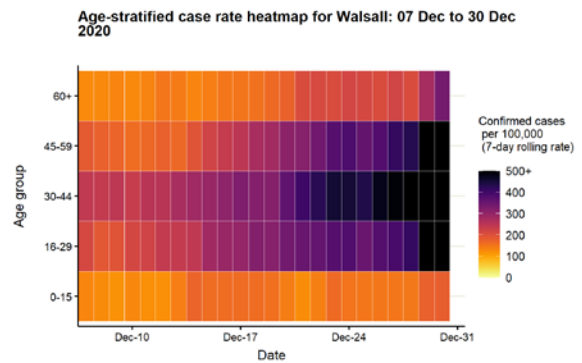
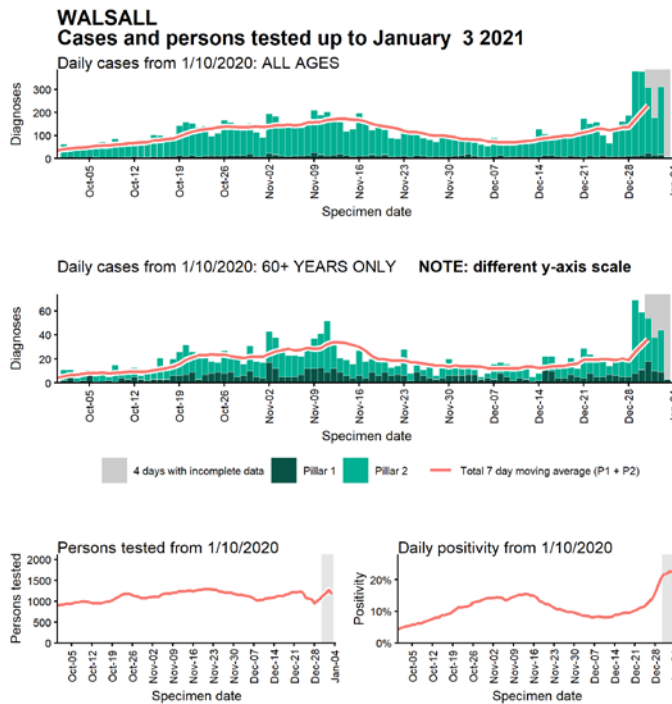
Data from SGSS. Produced by Outbreak Surveillance Team, PHE

Case numbers, testing numbers and positivity, Telford and Wrekin : 01 Sep to 03 Jan 2021



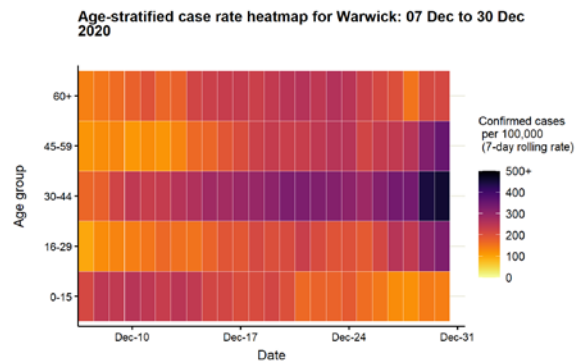
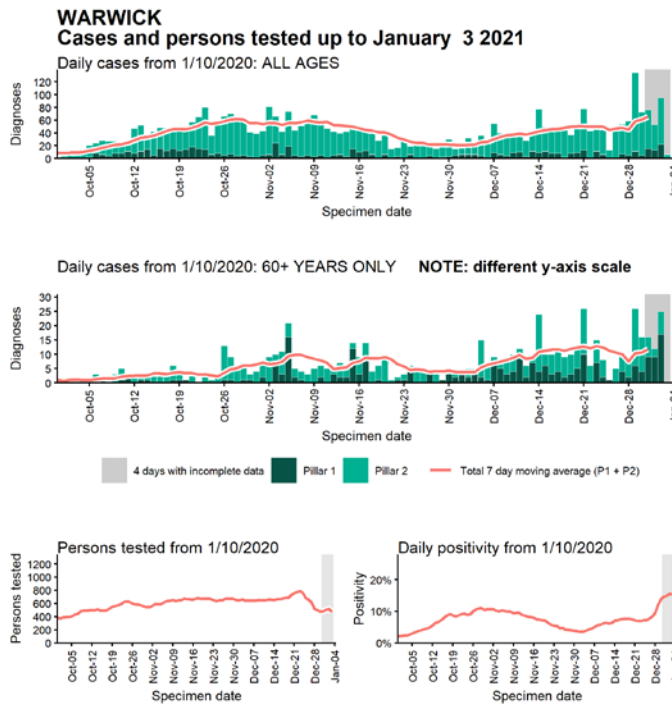
Data from SGSS. Produced by Outbreak Surveillance Team, PHE

Case numbers, testing numbers and positivity, Walsall : 01 Sep to 03 Jan 2021



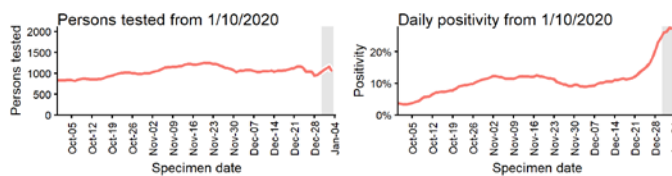
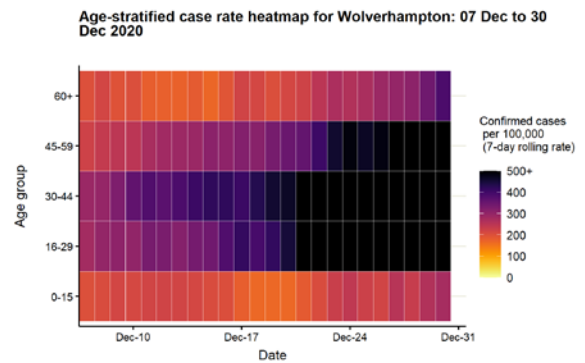
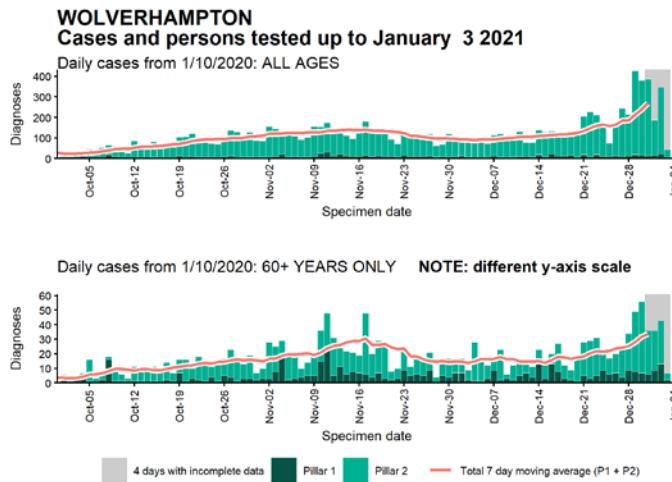
Data from SGSS. Produced by Outbreak Surveillance Team, PHE

Case numbers, testing numbers and positivity, Warwick : 01 Sep to 03 Jan 2021



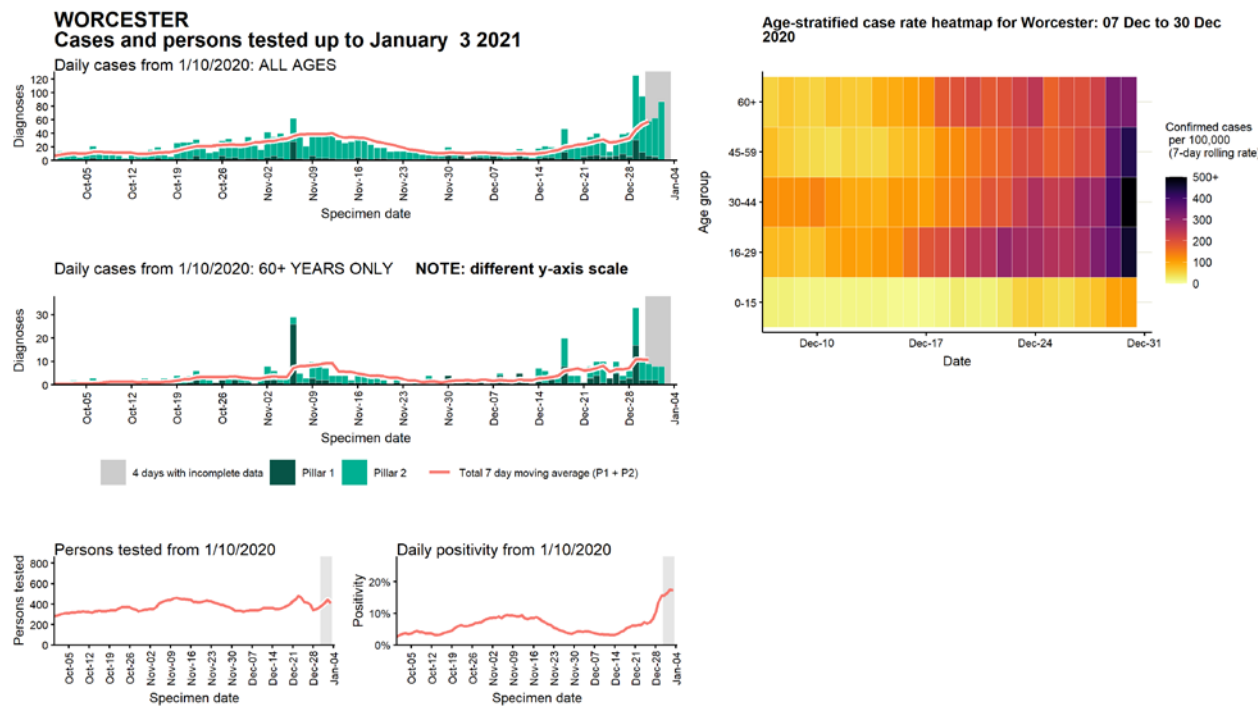
Data from SGSS. Produced by Outbreak Surveillance Team, PHE

Case numbers, testing numbers and positivity, Wolverhampton : 01 Sep to 03 Jan 2021



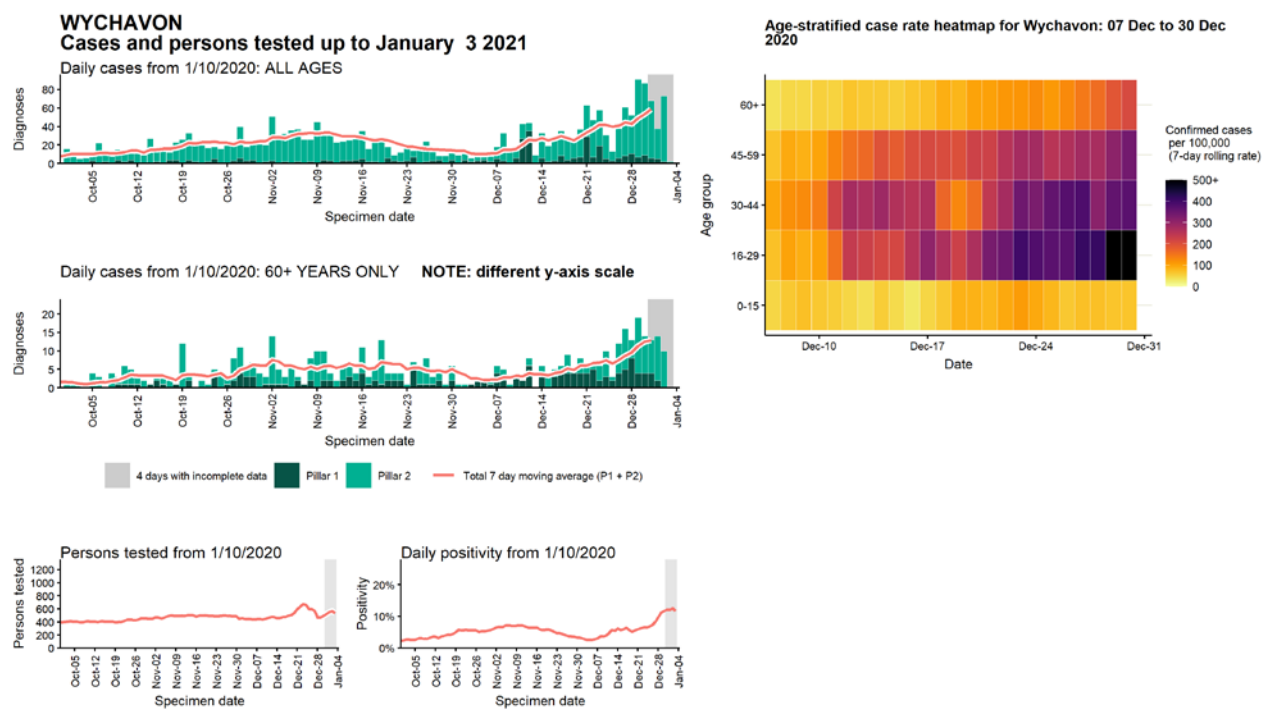
Data from SGSS. Produced by Outbreak Surveillance Team, PHE

Case numbers, testing numbers and positivity, Worcester : 01 Sep to 03 Jan 2021



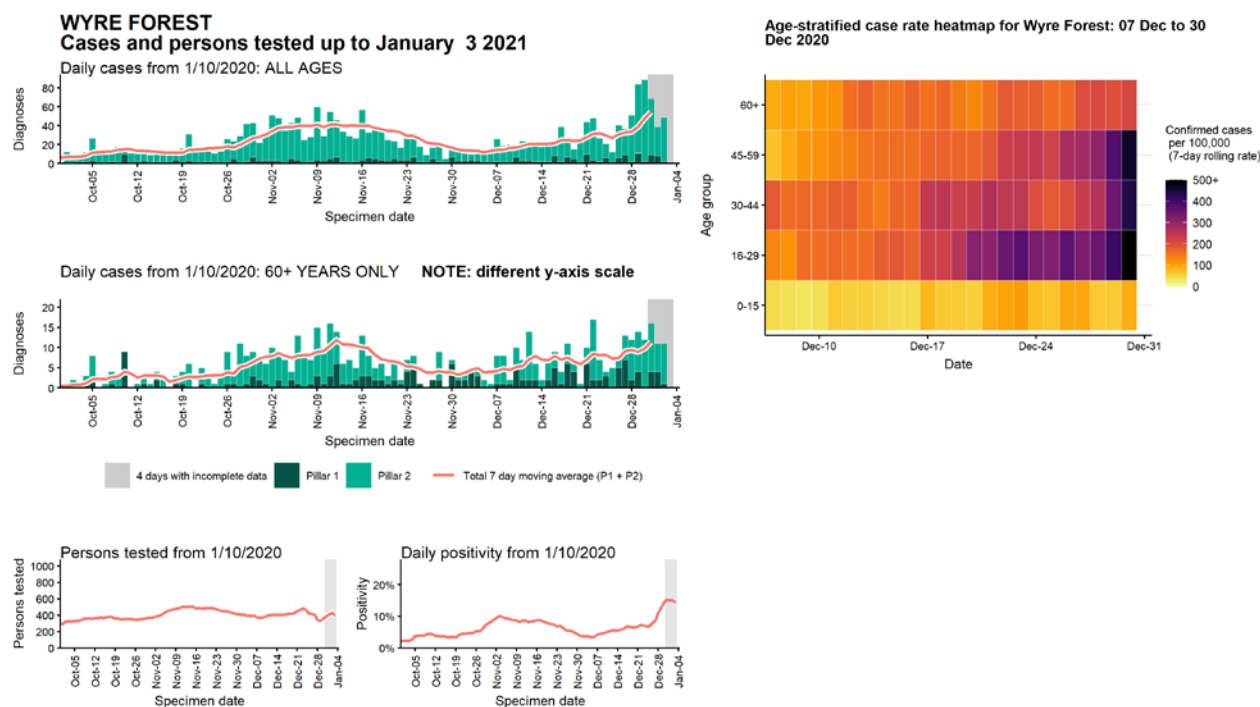
Data from SGSS. Produced by Outbreak Surveillance Team, PHE

Case numbers, testing numbers and positivity, Wychavon : 01 Sep to 03 Jan 2021



Data from SGSS. Produced by Outbreak Surveillance Team, PHE

Case numbers, testing numbers and positivity, Wyre Forest : 01 Sep to 03 Jan 2021



Data from SGSS. Produced by Outbreak Surveillance Team, PHE

© Crown copyright 2020

www.gov.uk/dhsc

This publication is licensed under the terms of the Open Government Licence v3.0 except where otherwise stated. To view this licence, visit nationalarchives.gov.uk/doc/open-government-licence/version/3

Where we have identified any third party copyright information you will need to obtain permission from the copyright holders concerned.

