



Department  
of Health &  
Social Care

# South West: lower tier local authority watchlist – epidemiological charts

Produced 04 January 2021

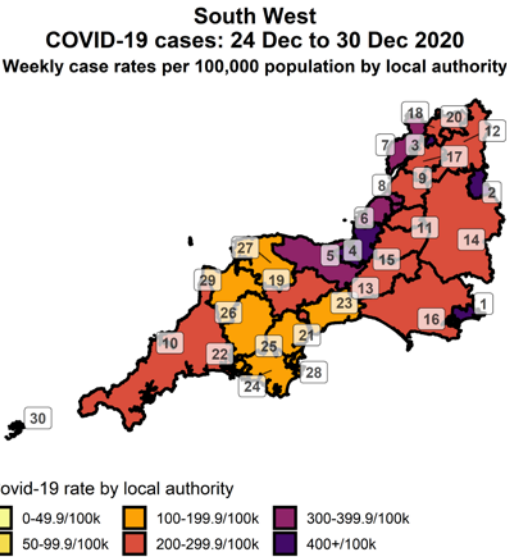
## NOTES

- This data is provided by Public Health England for the purpose of monitoring and supporting the management of Covid-19 infections in Local Authorities.
- The reports are produced using 2019 ONS population data
- If you would like to know the weekly trend for the case rate charts and persons tested chart please see Lower-tier local authority watchlist.

# Weekly case rate per 100,000 population by local authority: 24 Dec to 30 Dec 2020

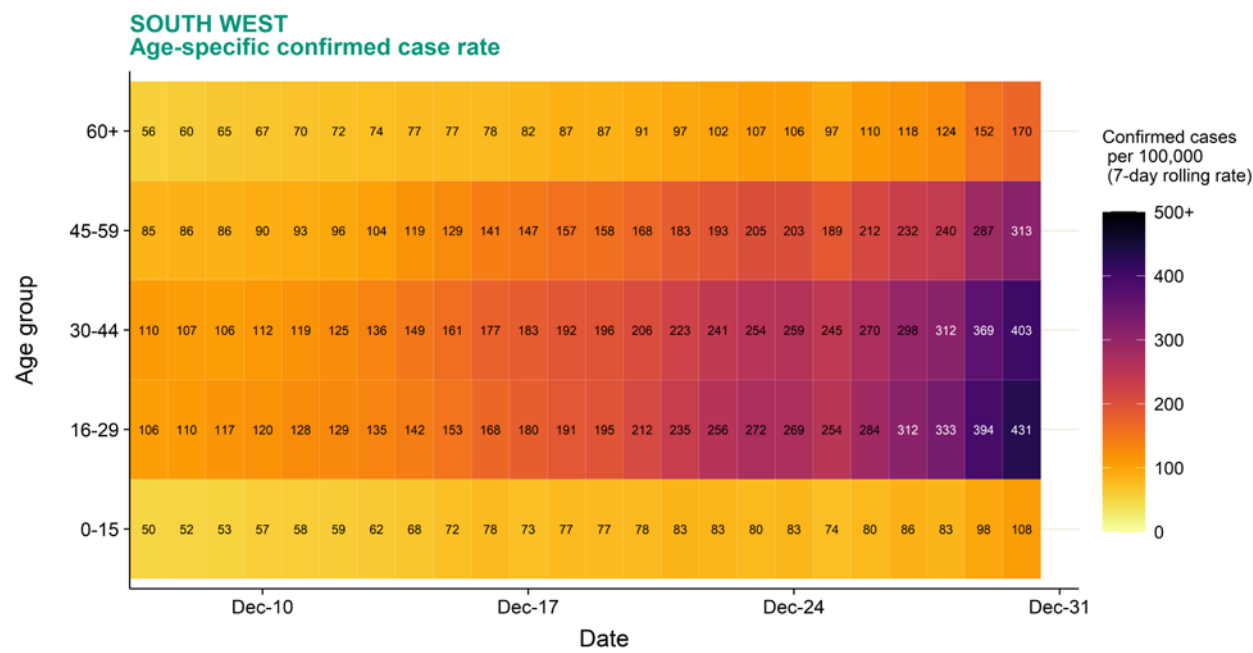
Rank	Local Authority	Case Rate (per 100,000)	Number of cases (1 week)
1	Bournemouth, Christchurch and Poole	448.5	1773
2	Swindon	435.7	968
3	Gloucester	421.3	544
4	Sedgemoor	414.8	511
5	Somerset West and Taunton	393.9	611
6	North Somerset	326.9	703
7	Forest of Dean	326.1	283
8	Bristol, City of	305.6	1416
9	South Gloucestershire	299.9	855
10	Cornwall	277.0	1578
11	Bath and North East Somerset	259.7	502
12	Cotswold	257.1	231
13	South Somerset	254.2	428
14	Wiltshire	245.2	1226
15	Mendip	232.7	269

Rank	Local Authority	Case Rate (per 100,000)	Number of cases (1 week)
16	Dorset	230.6	873
17	Stroud	223.4	268
18	Tewkesbury	222.1	211
19	Mid Devon	208.5	170
20	Cheltenham	204.6	238
21	Exeter	200.1	263
22	Plymouth	192.7	505
23	East Devon	151.8	222
24	South Hams	144.8	126
25	Teignbridge	140.9	189
26	West Devon	125.5	70
27	North Devon	114.3	111
28	Torbay	107.9	147
29	Torridge	105.5	72
30	Isles of Scilly	0.0	0



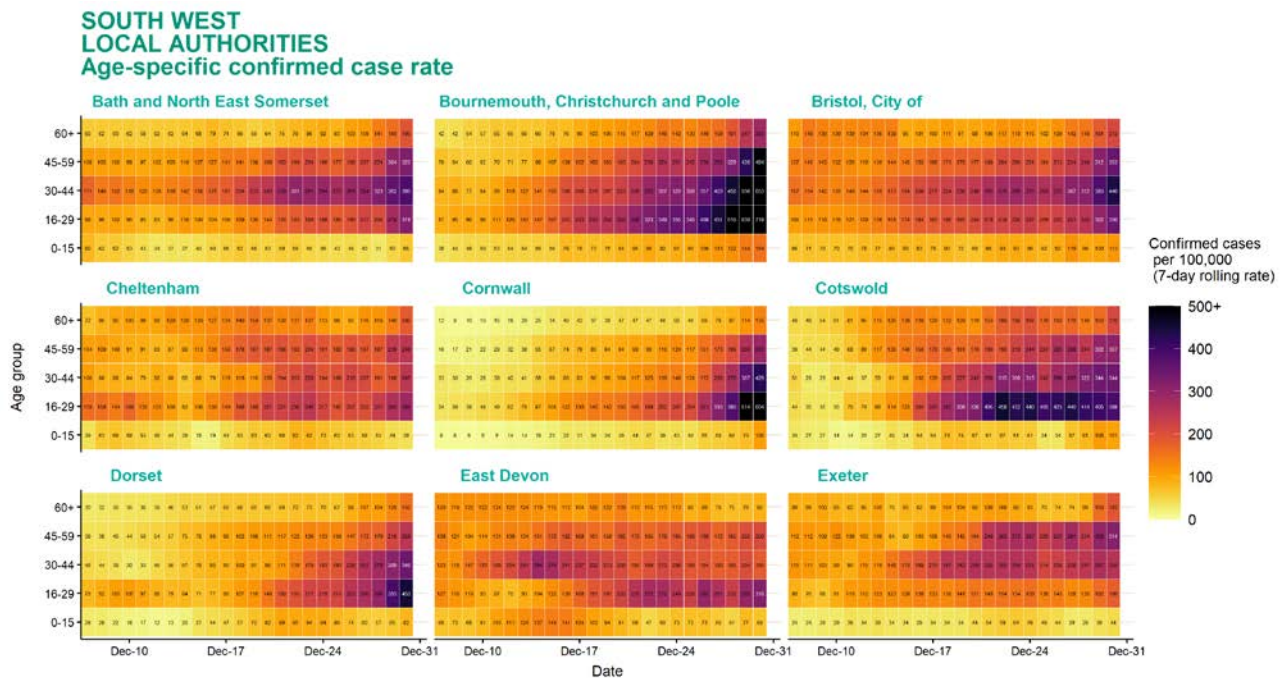
Data from SGSS; Pillar 1 and 2 testing. Figure by Outbreak Surveillance Team, Public Health England.  
Contains National Statistics data including 2019 population estimates Â© Crown copyright and database right 2020

# Age-stratified heatmap of weekly case rate for South West : 07 Dec to 30 Dec 2020



Source: Case data from SGSS. Produced by Outbreak Surveillance Team, PHE  
Contains National Statistics data Â© Crown copyright and database right 2020

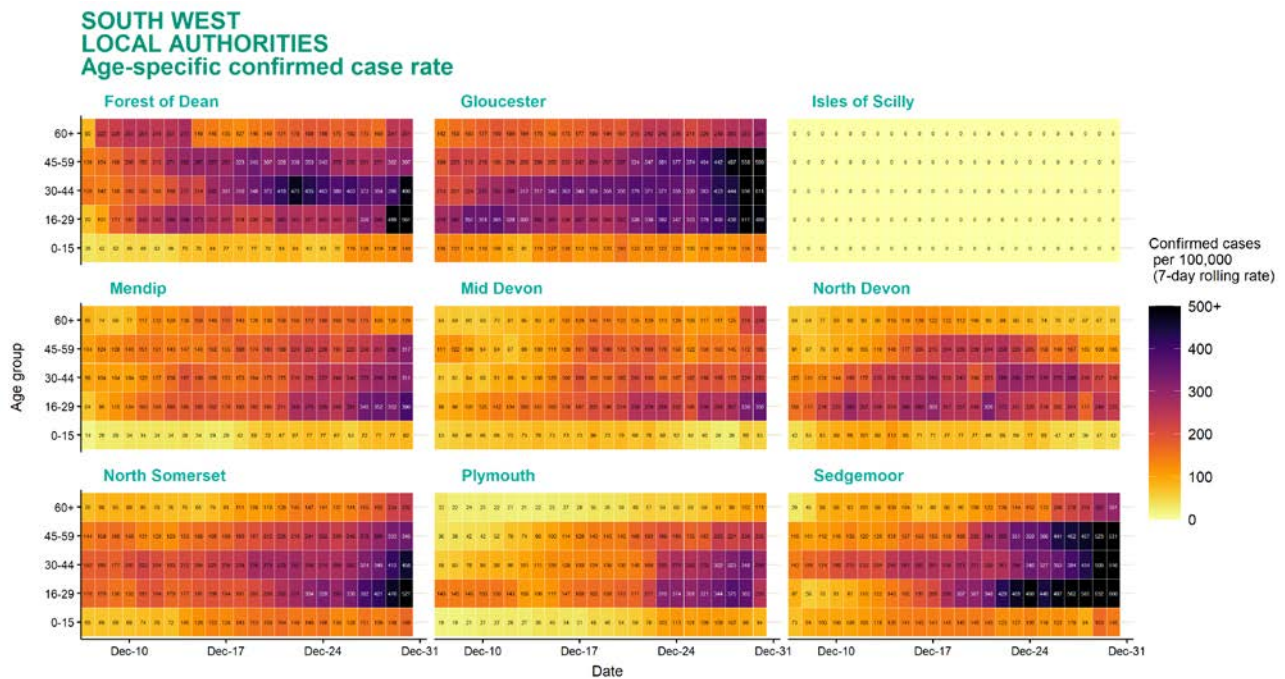
## Age-stratified heatmap of weekly case rate by local authority for South West : 07 Dec to 30 Dec 2020



Source: Case data from SGSS. Produced by Outbreak Surveillance Team, PHE

Contains National Statistics data Â© Crown copyright and database right 2020

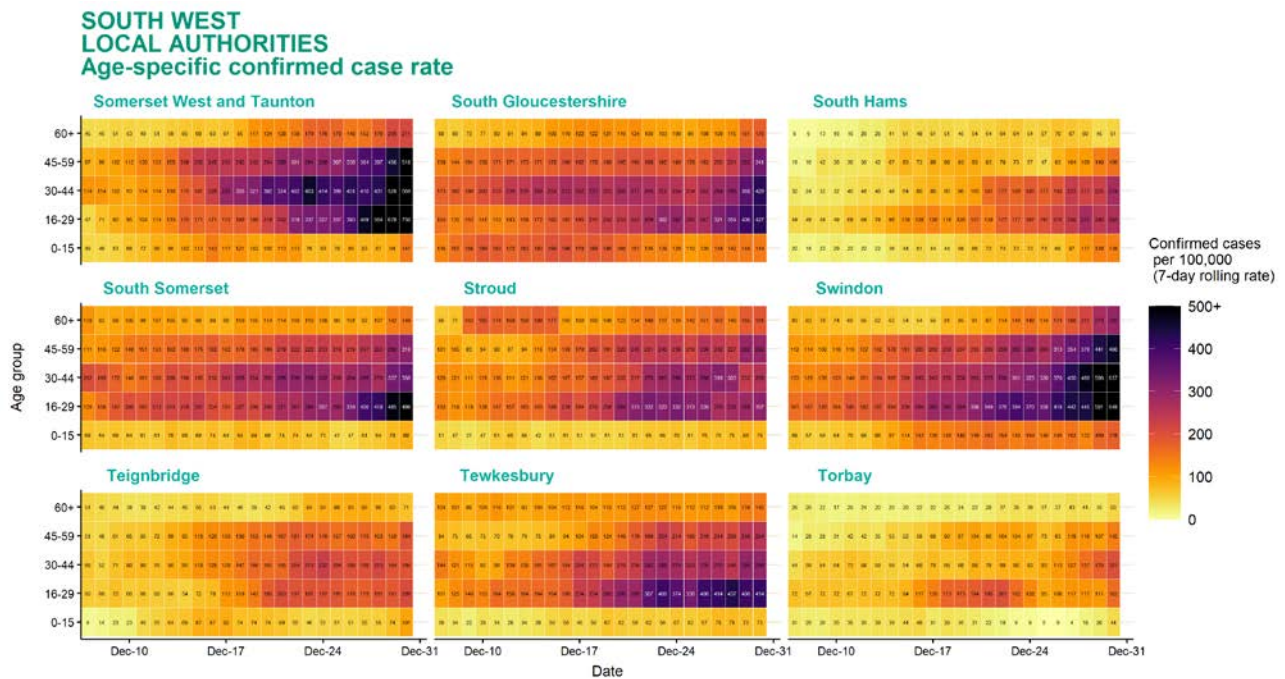
## Age-stratified heatmap of weekly case rate by local authority for South West : 07 Dec to 30 Dec 2020



Source: Case data from SGSS. Produced by Outbreak Surveillance Team, PHE

Contains National Statistics data Â© Crown copyright and database right 2020

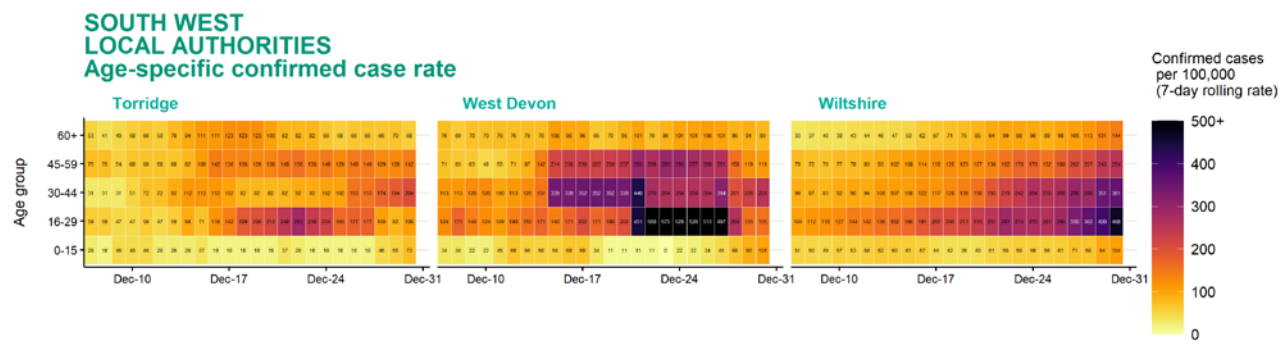
## Age-stratified heatmap of weekly case rate by local authority for South West : 07 Dec to 30 Dec 2020



Source: Case data from SGSS. Produced by Outbreak Surveillance Team, PHE

Contains National Statistics data Â© Crown copyright and database right 2020

# Age-stratified heatmap of weekly case rate by local authority for South West : 07 Dec to 30 Dec 2020



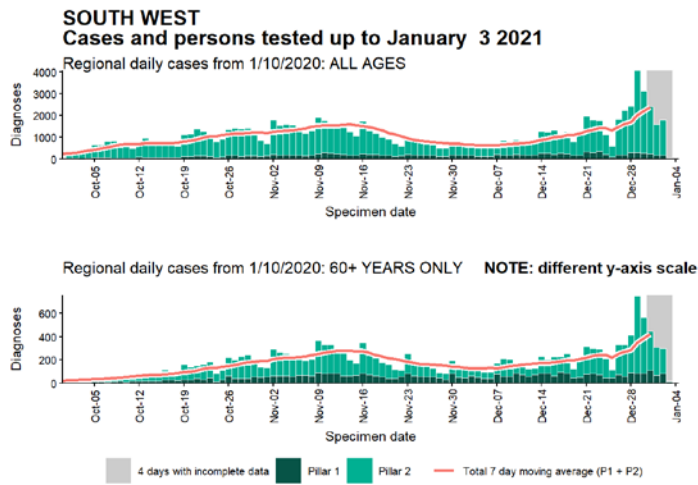
Date

Source: Case data from SGSS. Produced by Outbreak Surveillance Team, PHE

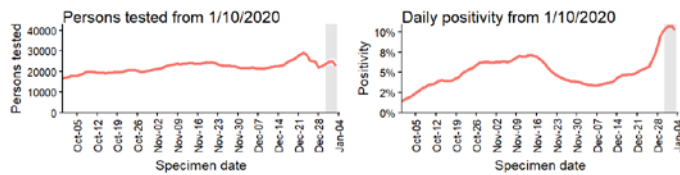
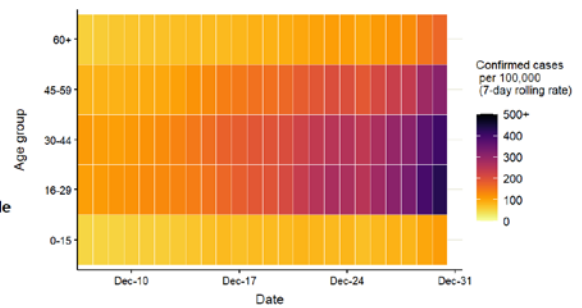
Contains National Statistics data Â© Crown copyright and database right 2020



## Regional case numbers, testing numbers and positivity, South West : 01 Sep to 03 Jan 2021



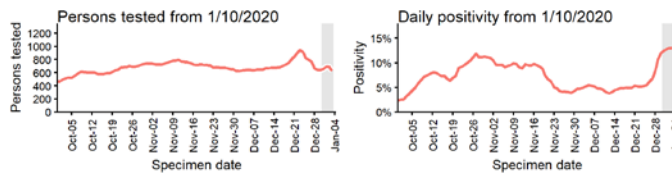
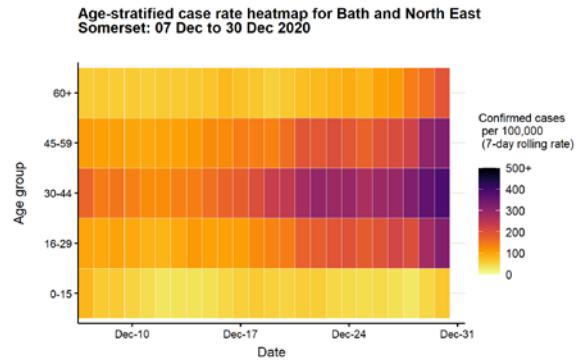
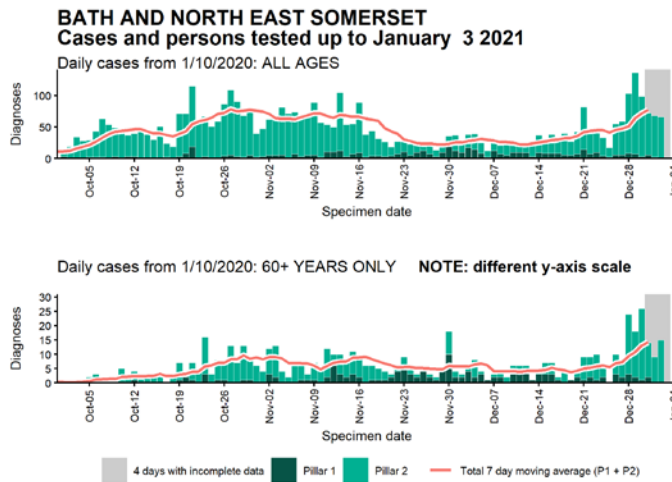
Regional age-stratified case rate heatmap for South West: 07 Dec to 30 Dec 2020



Data from SGSS. Produced by Outbreak Surveillance Team, PHE

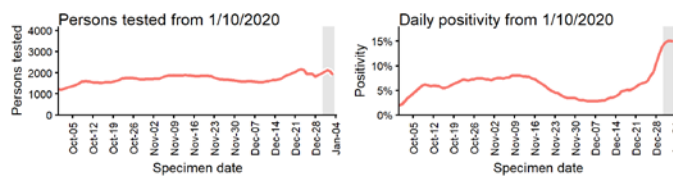
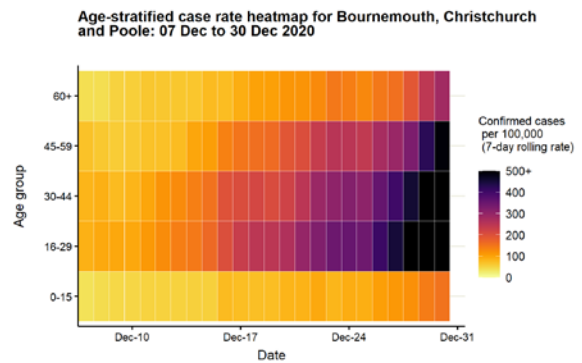
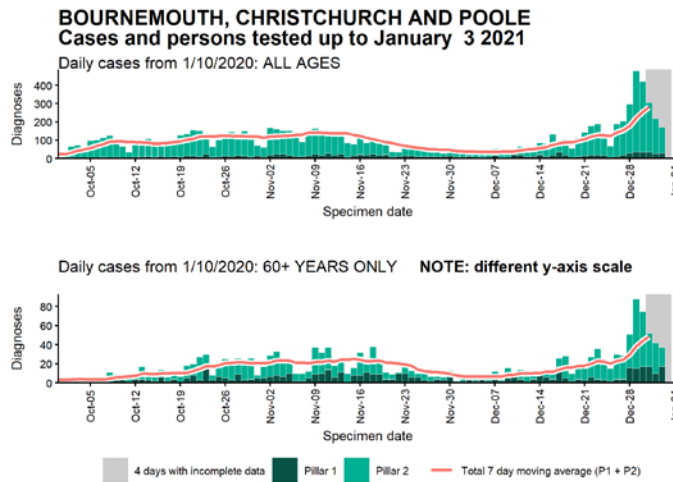


## Case numbers, testing numbers and positivity, Bath and North East Somerset : 01 Sep to 03 Jan 2021



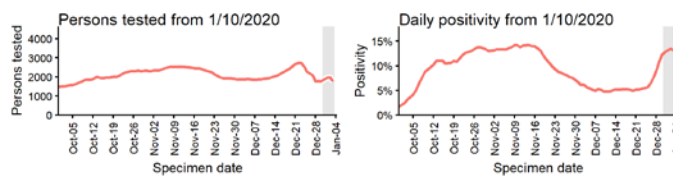
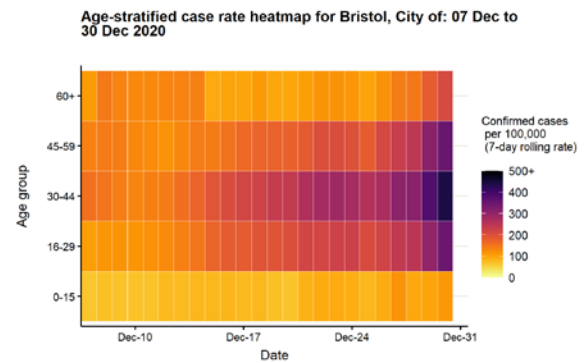
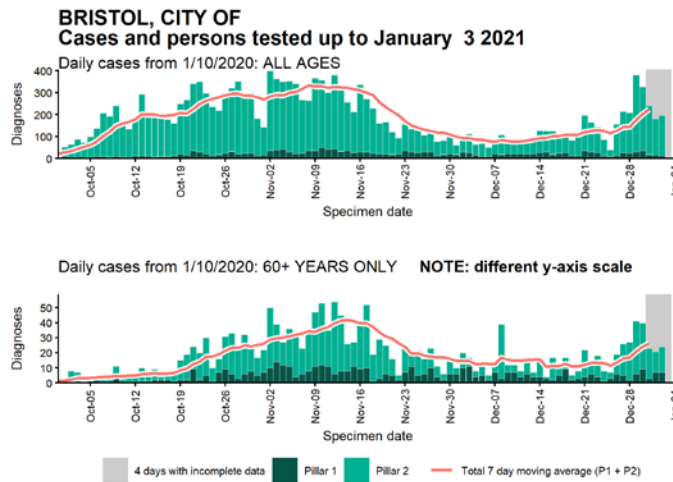
Data from SGSS. Produced by Outbreak Surveillance Team, PHE

## Case numbers, testing numbers and positivity, Bournemouth, Christchurch and Poole : 01 Sep to 03 Jan 2021



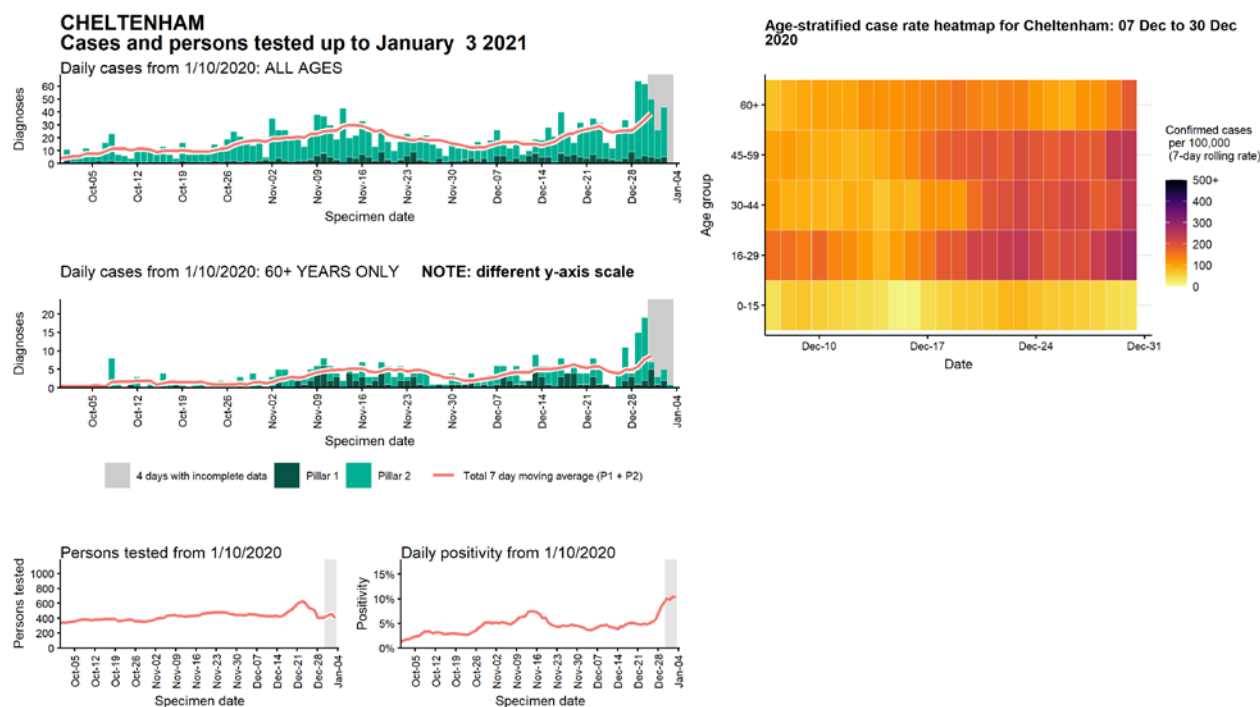
Data from SGSS. Produced by Outbreak Surveillance Team, PHE

## Case numbers, testing numbers and positivity, Bristol, City of : 01 Sep to 03 Jan 2021



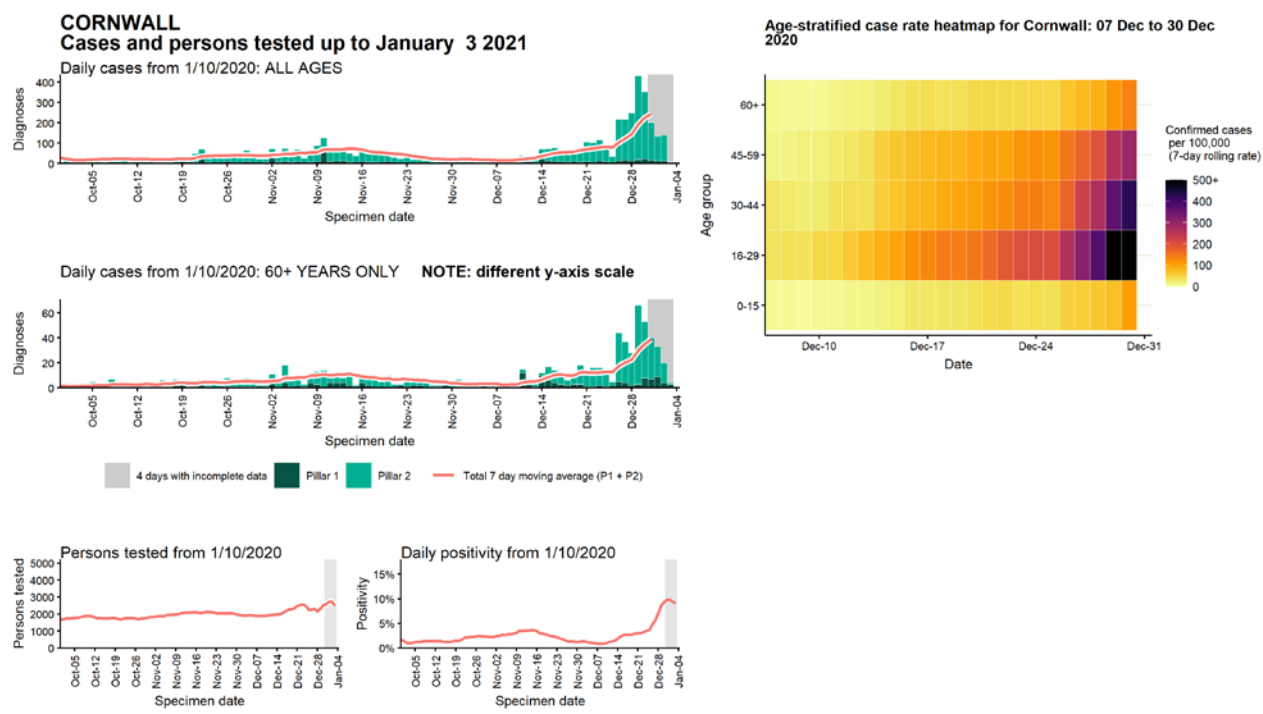
Data from SGSS. Produced by Outbreak Surveillance Team, PHE

Case numbers, testing numbers and positivity, Cheltenham : 01 Sep to 03 Jan 2021



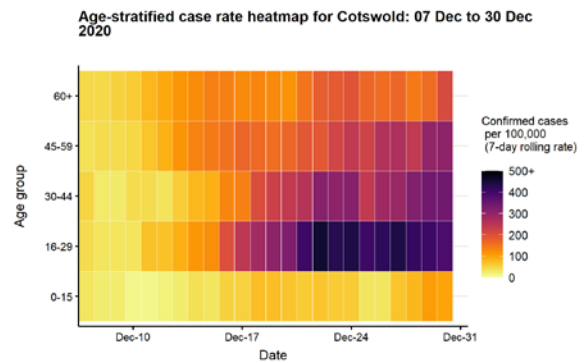
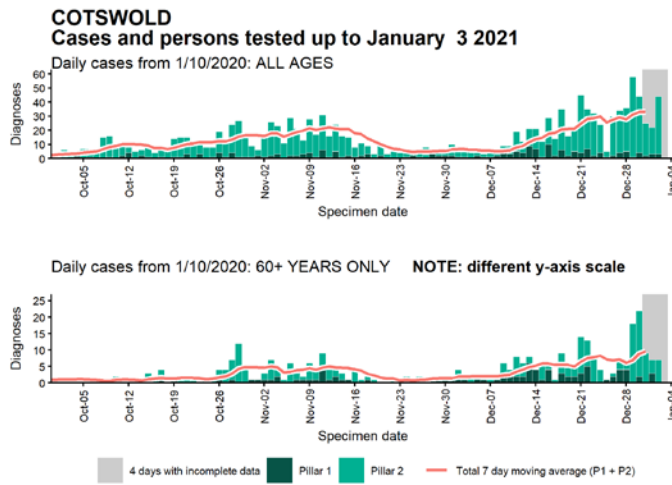
Data from SGSS. Produced by Outbreak Surveillance Team, PHE

# Case numbers, testing numbers and positivity, Cornwall : 01 Sep to 03 Jan 2021



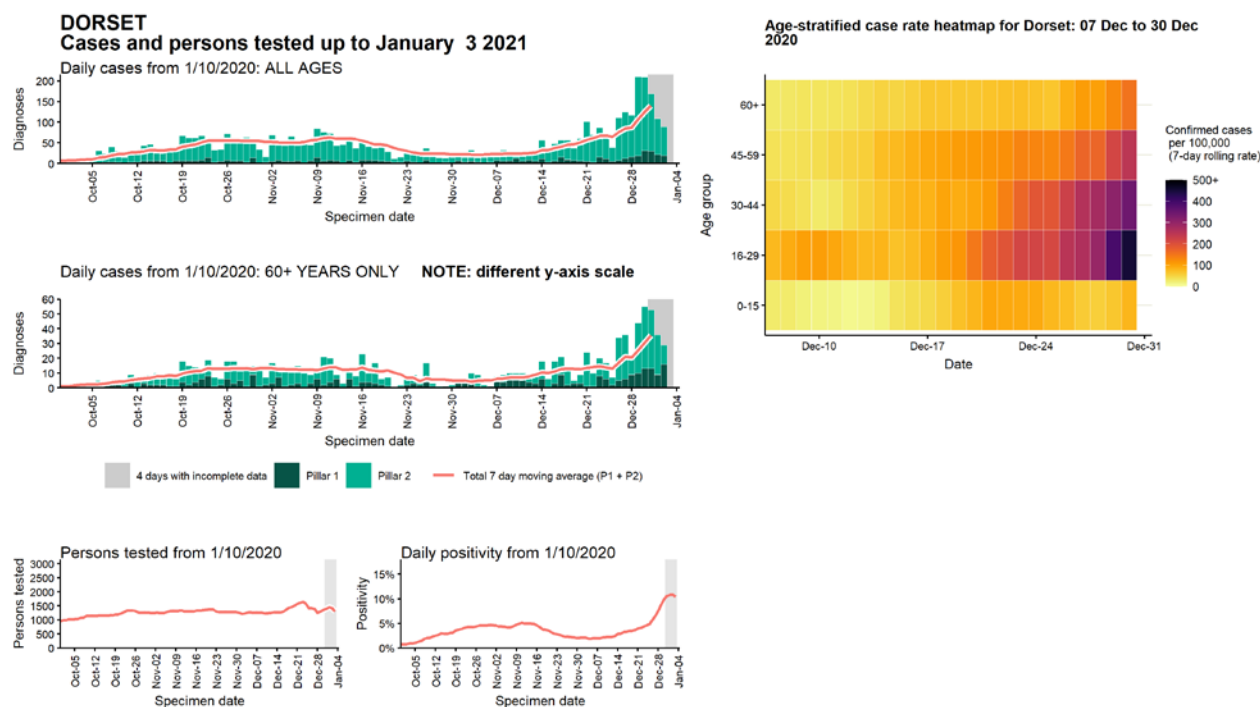
Data from SGSS. Produced by Outbreak Surveillance Team, PHE

## Case numbers, testing numbers and positivity, Cotswold : 01 Sep to 03 Jan 2021



Data from SGSS. Produced by Outbreak Surveillance Team, PHE

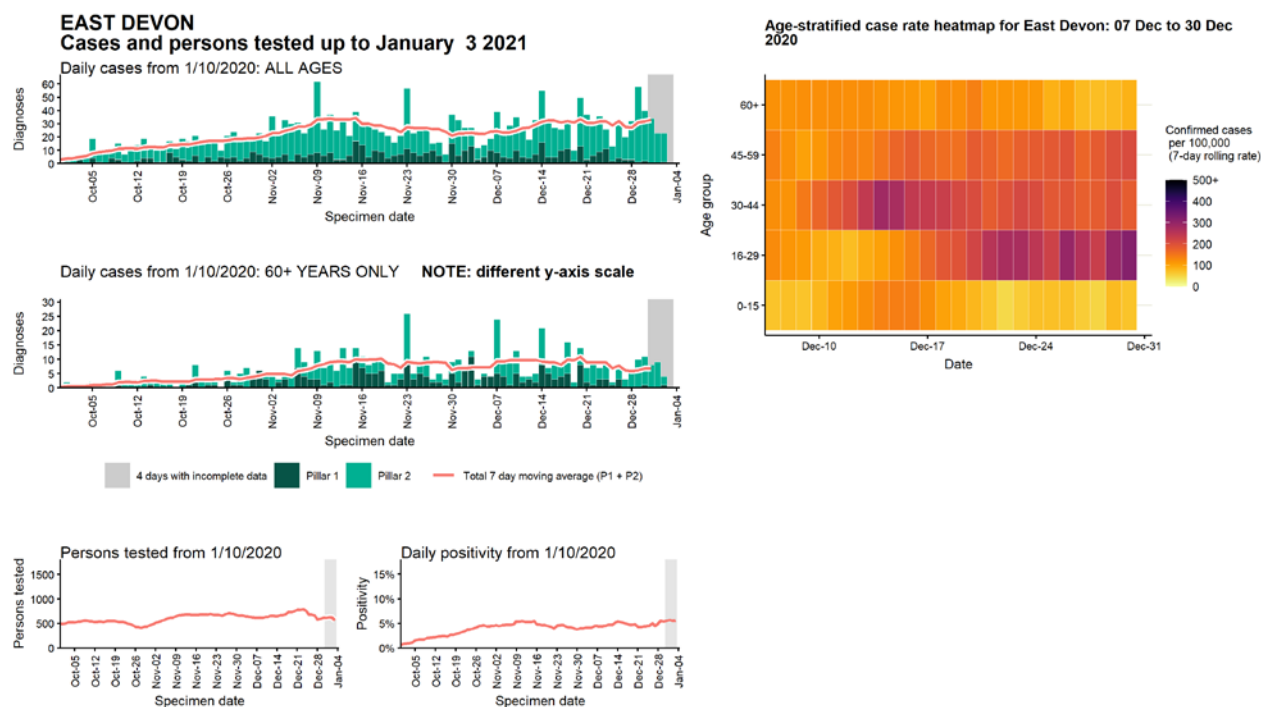
# Case numbers, testing numbers and positivity, Dorset : 01 Sep to 03 Jan 2021



Data from SGSS. Produced by Outbreak Surveillance Team, PHE

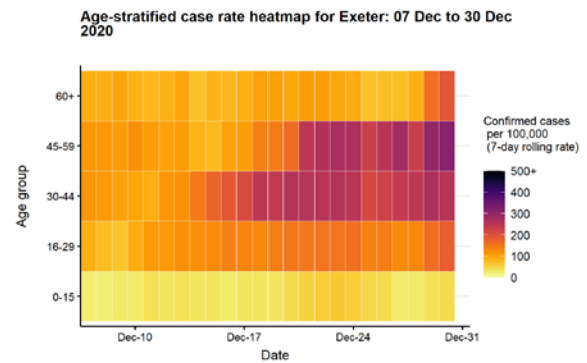
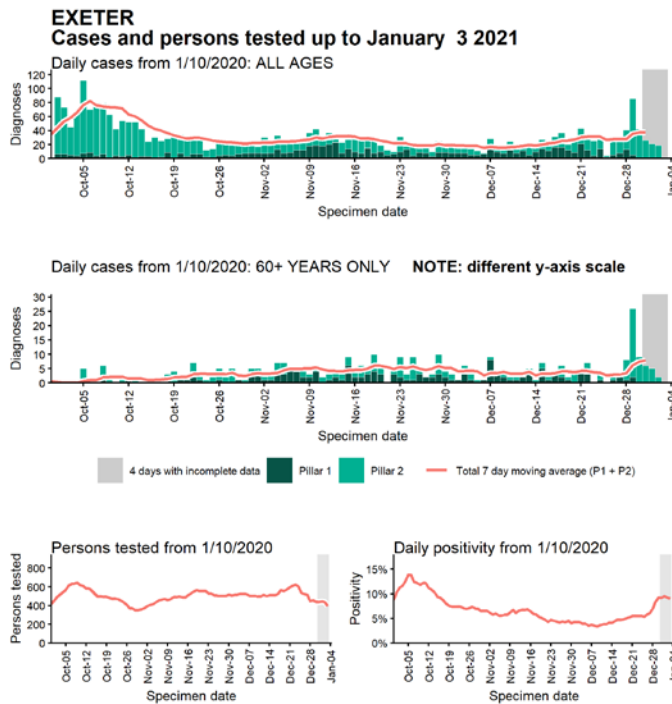


Case numbers, testing numbers and positivity, East Devon : 01 Sep to 03 Jan 2021



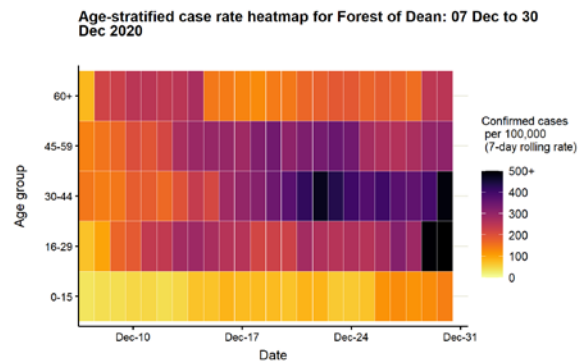
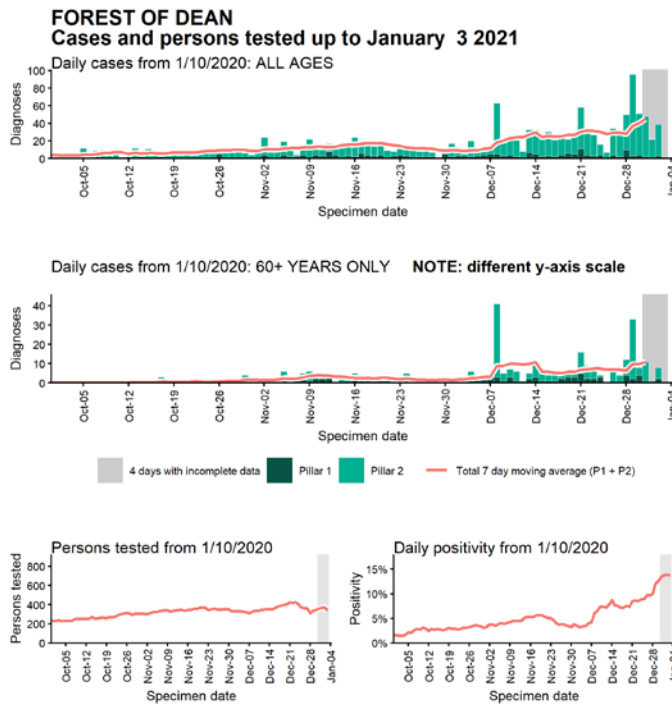
Data from SGSS. Produced by Outbreak Surveillance Team, PHE

## Case numbers, testing numbers and positivity, Exeter : 01 Sep to 03 Jan 2021



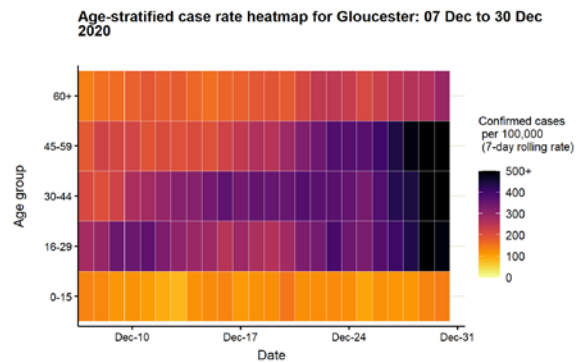
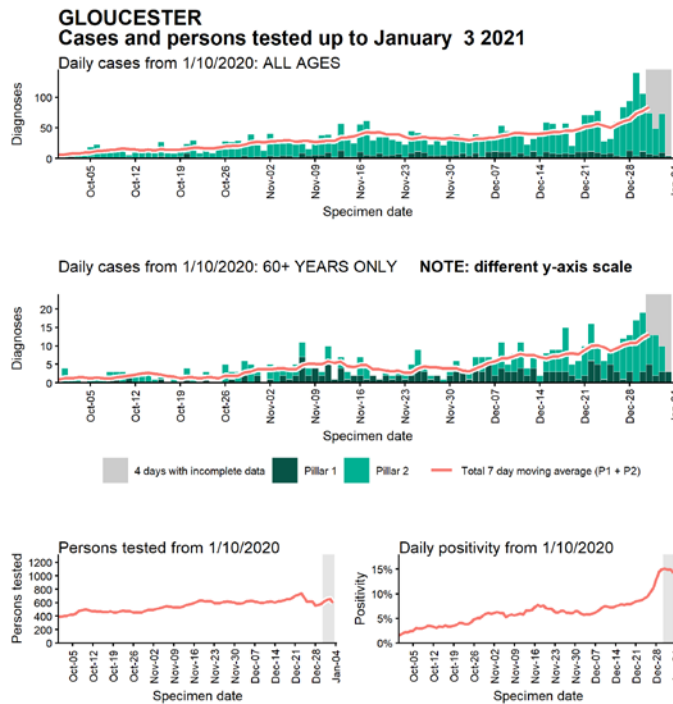
Data from SGSS. Produced by Outbreak Surveillance Team, PHE

## Case numbers, testing numbers and positivity, Forest of Dean : 01 Sep to 03 Jan 2021



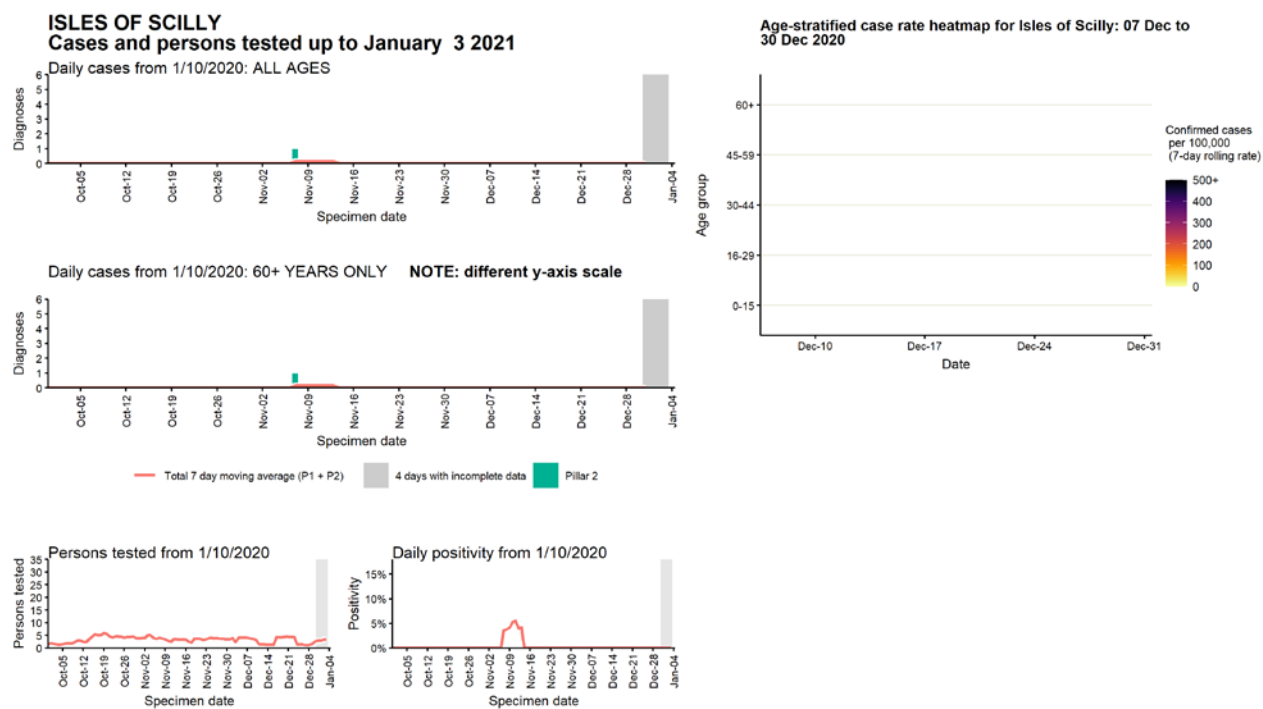
Data from SGSS. Produced by Outbreak Surveillance Team, PHE

## Case numbers, testing numbers and positivity, Gloucester : 01 Sep to 03 Jan 2021



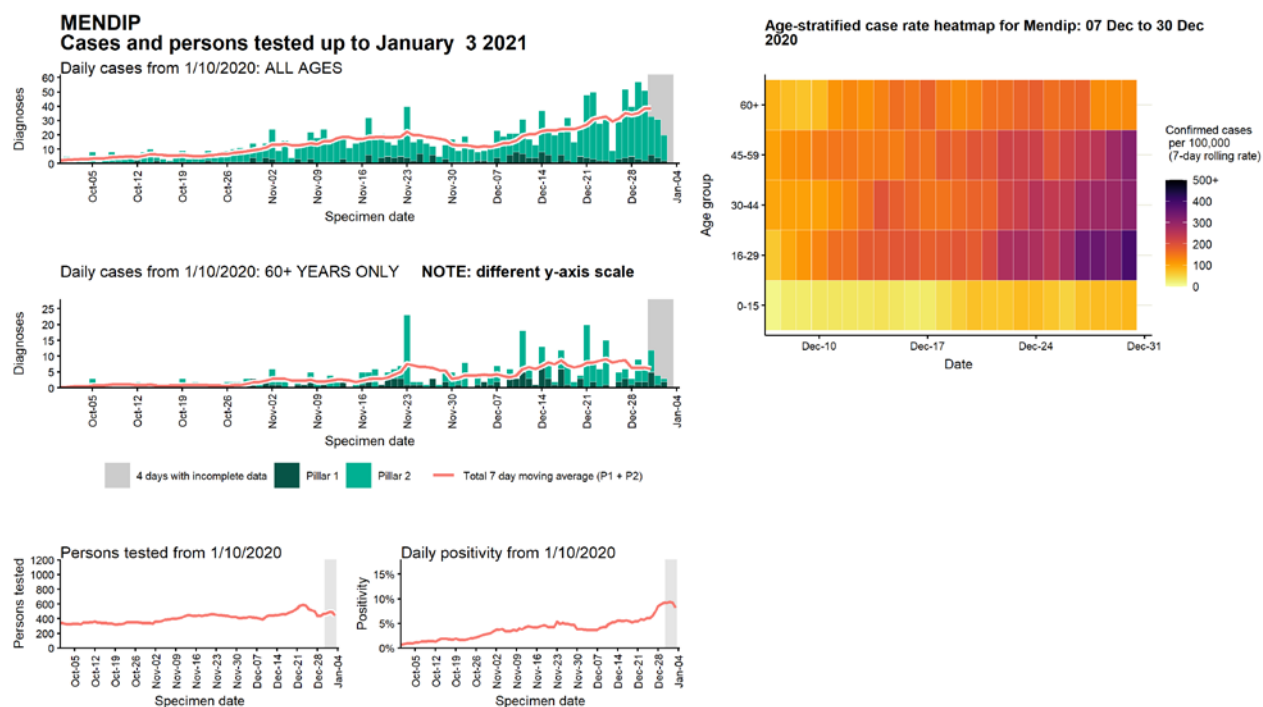
Data from SGSS. Produced by Outbreak Surveillance Team, PHE

# Case numbers, testing numbers and positivity, Isles of Scilly : 01 Sep to 03 Jan 2021



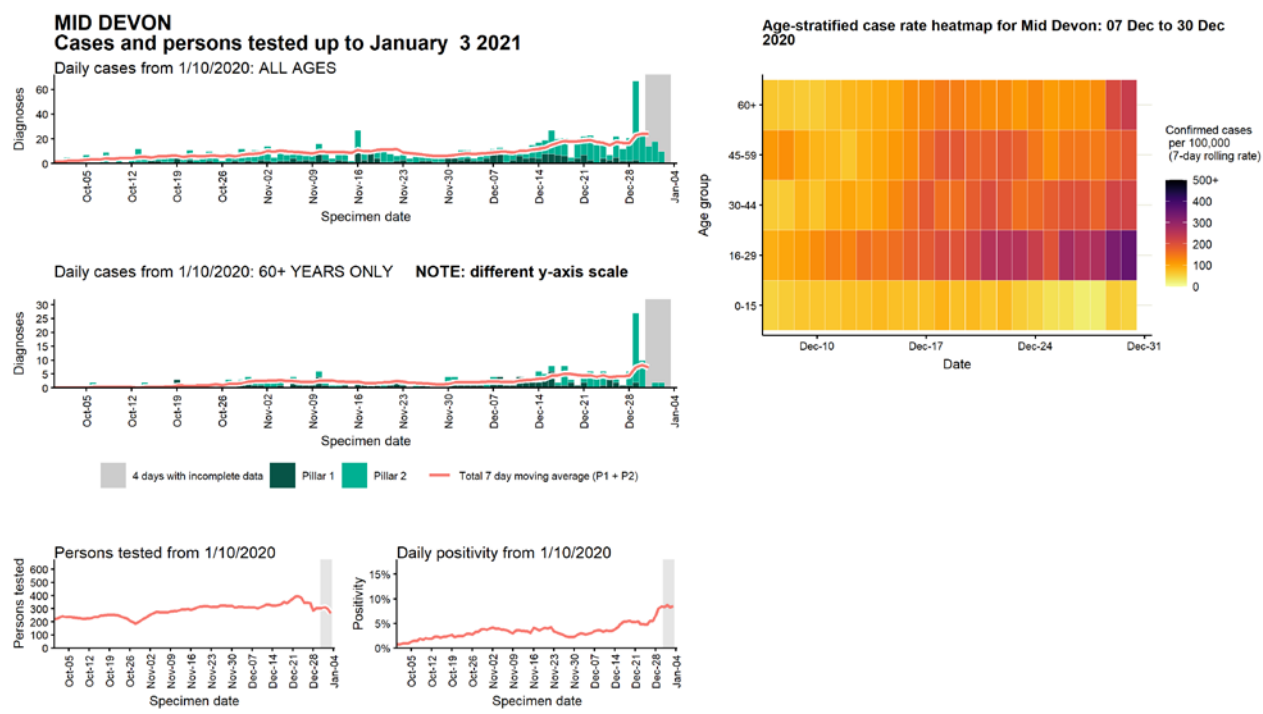
Data from SGSS. Produced by Outbreak Surveillance Team, PHE

# Case numbers, testing numbers and positivity, Mendip : 01 Sep to 03 Jan 2021



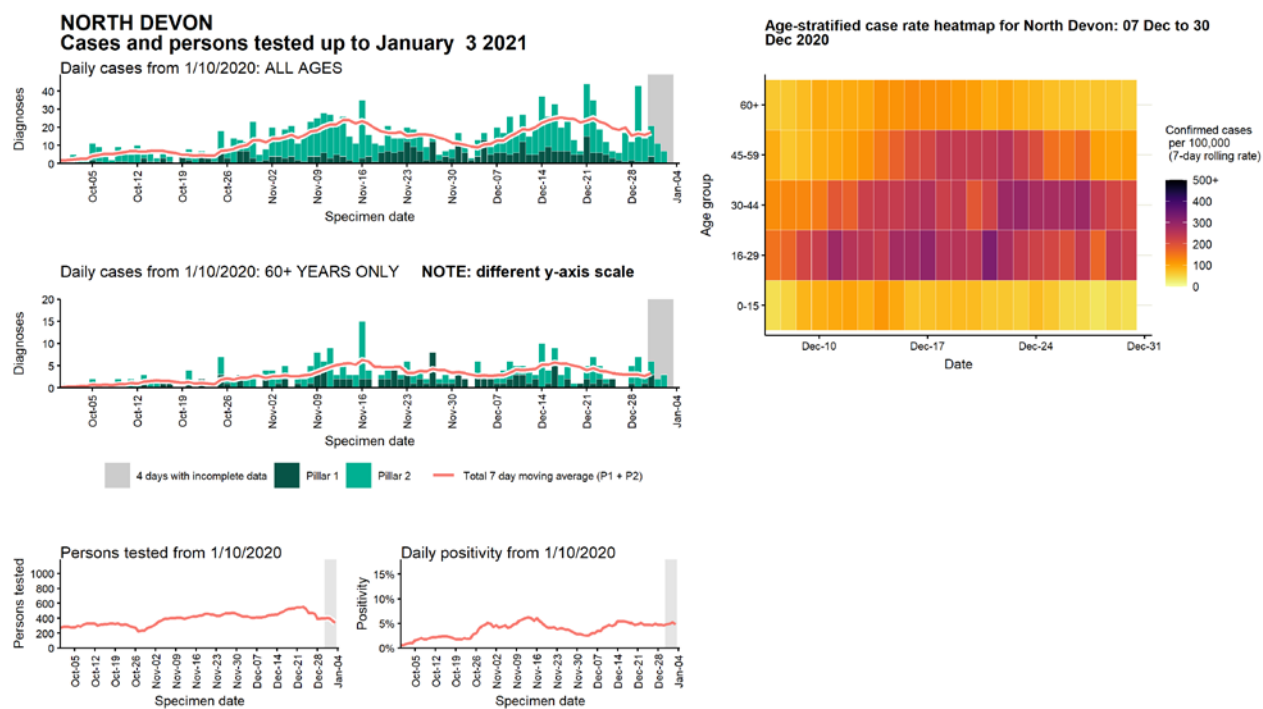
Data from SGSS. Produced by Outbreak Surveillance Team, PHE

# Case numbers, testing numbers and positivity, Mid Devon : 01 Sep to 03 Jan 2021



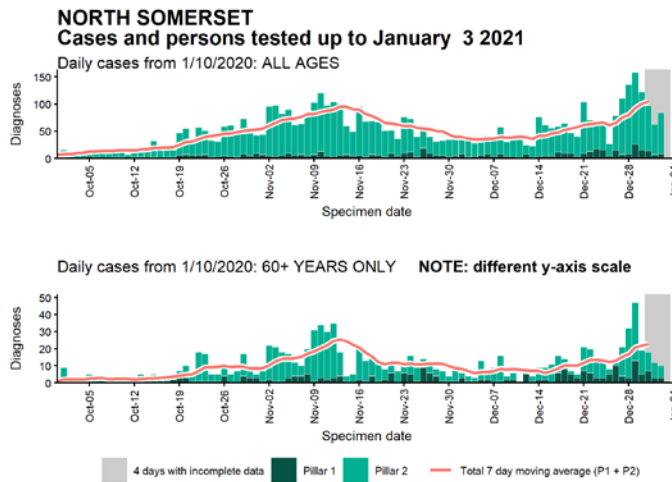


Case numbers, testing numbers and positivity, North Devon : 01 Sep to 03 Jan 2021

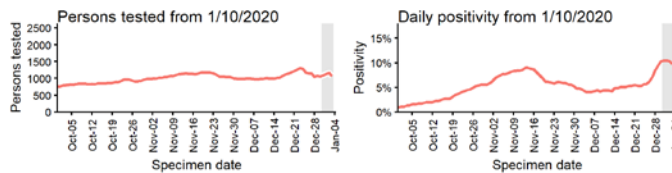
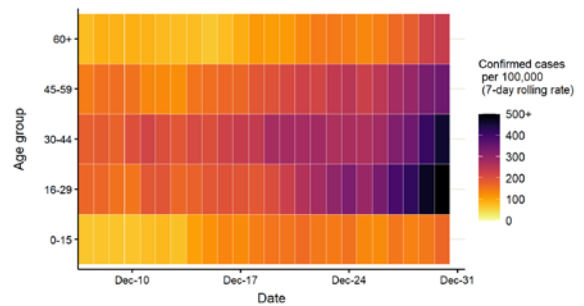


Data from SGSS. Produced by Outbreak Surveillance Team, PHE

## Case numbers, testing numbers and positivity, North Somerset : 01 Sep to 03 Jan 2021

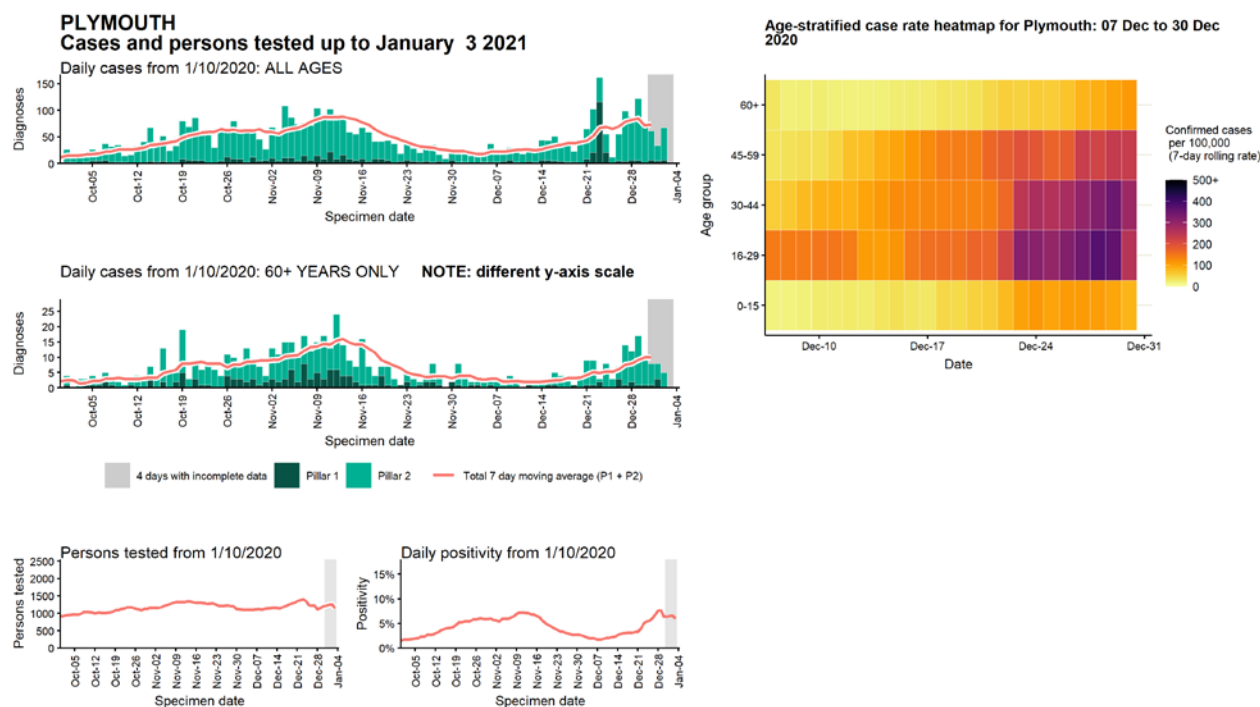


Age-stratified case rate heatmap for North Somerset: 07 Dec to 30 Dec 2020



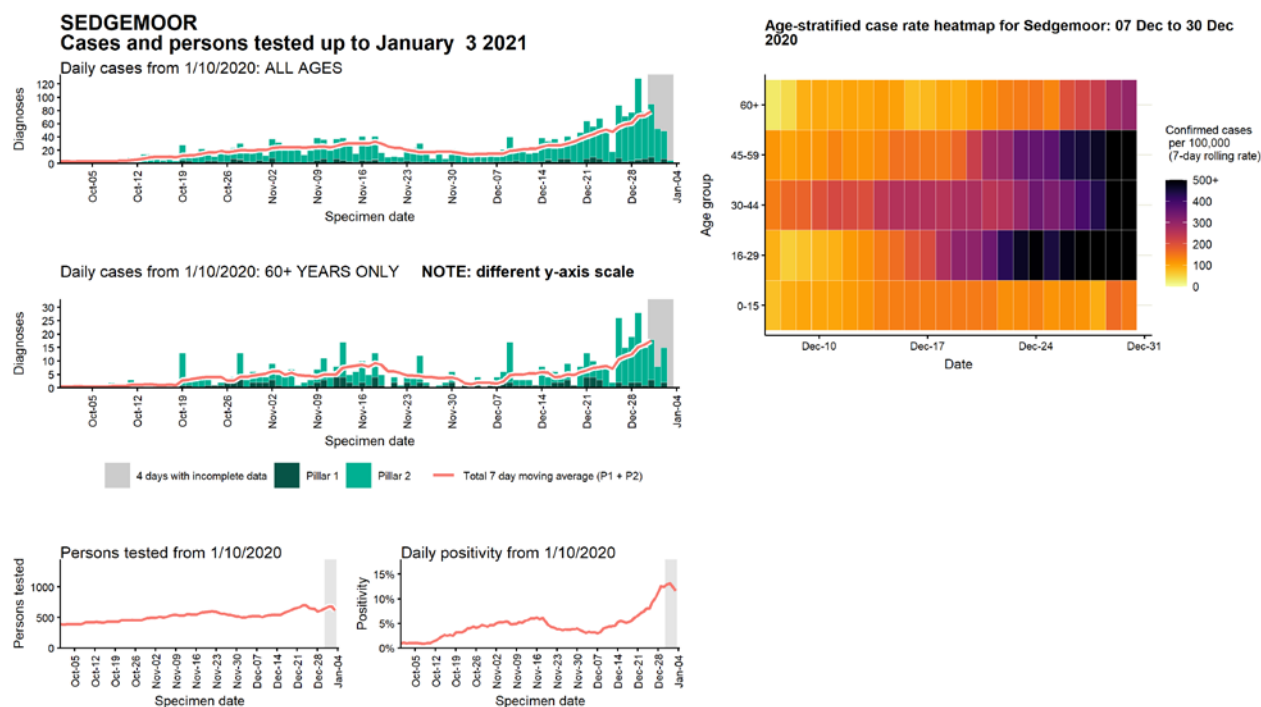
Data from SGSS. Produced by Outbreak Surveillance Team, PHE

# Case numbers, testing numbers and positivity, Plymouth : 01 Sep to 03 Jan 2021



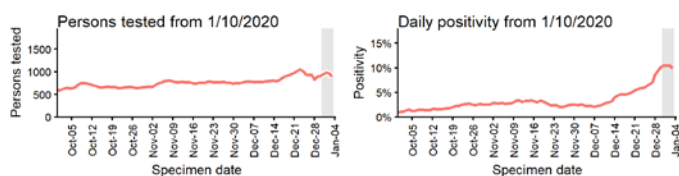
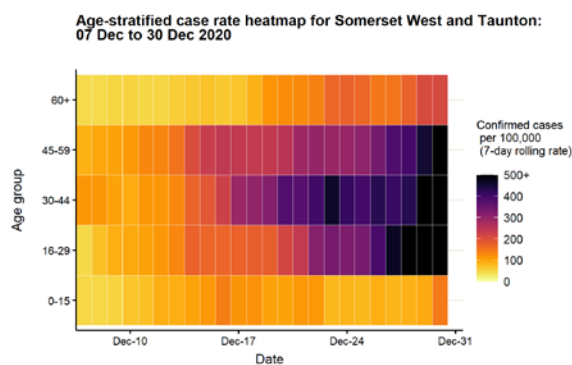
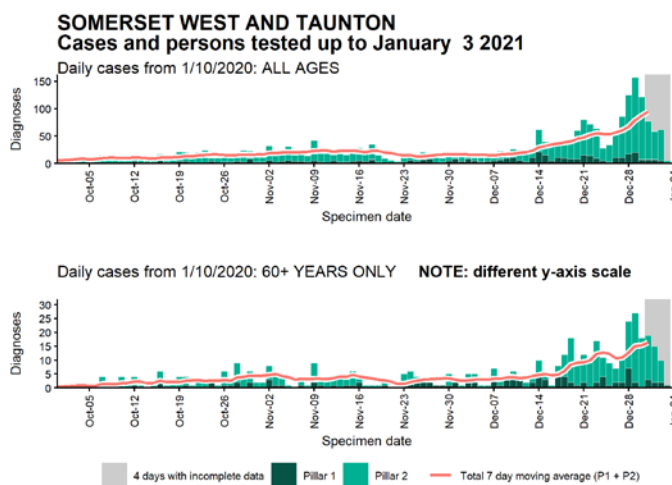
Data from SGSS. Produced by Outbreak Surveillance Team, PHE

Case numbers, testing numbers and positivity, Sedgemoor : 01 Sep to 03 Jan 2021



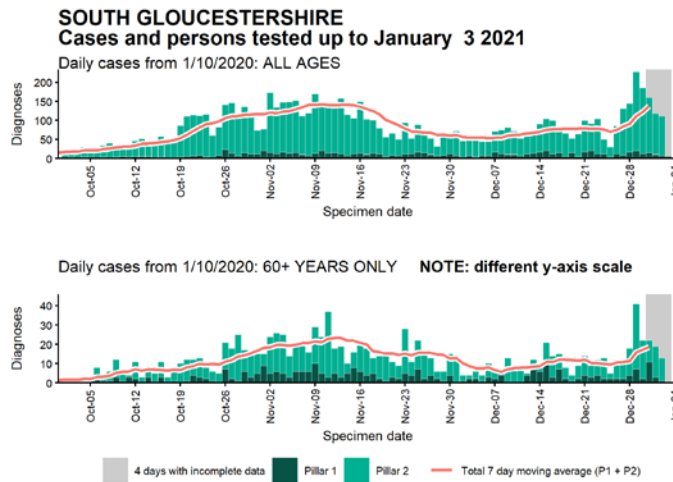
Data from SGSS. Produced by Outbreak Surveillance Team, PHE

**Case numbers, testing numbers and positivity, Somerset West and Taunton : 01 Sep to 03 Jan 2021**

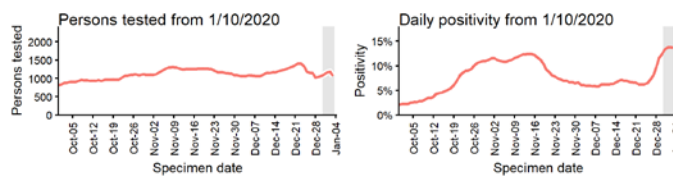
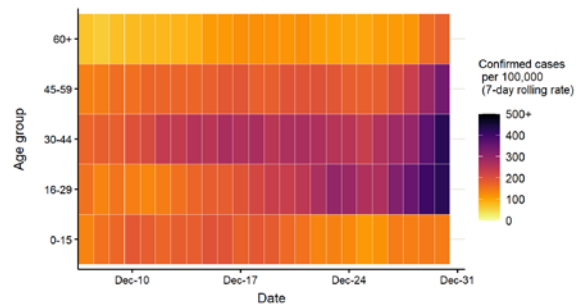


Data from SGSS. Produced by Outbreak Surveillance Team, PHE

## Case numbers, testing numbers and positivity, South Gloucestershire : 01 Sep to 03 Jan 2021

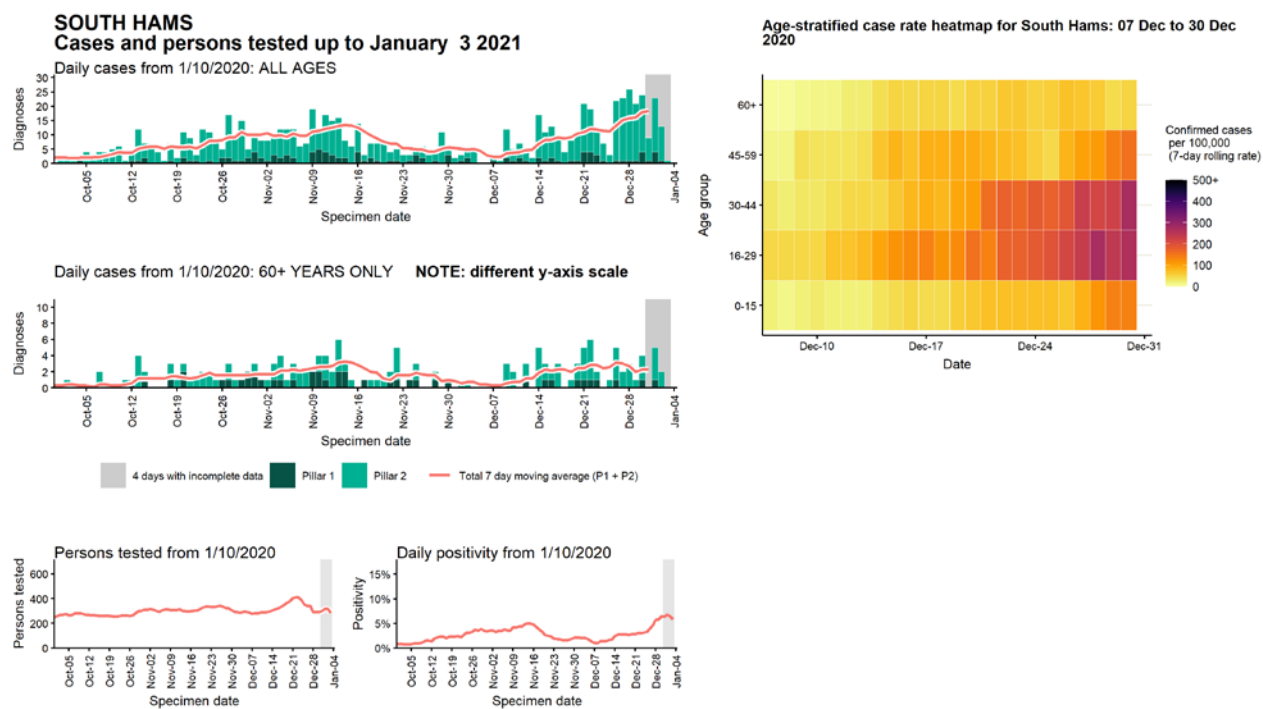


Age-stratified case rate heatmap for South Gloucestershire: 07 Dec to 30 Dec 2020



Data from SGSS. Produced by Outbreak Surveillance Team, PHE

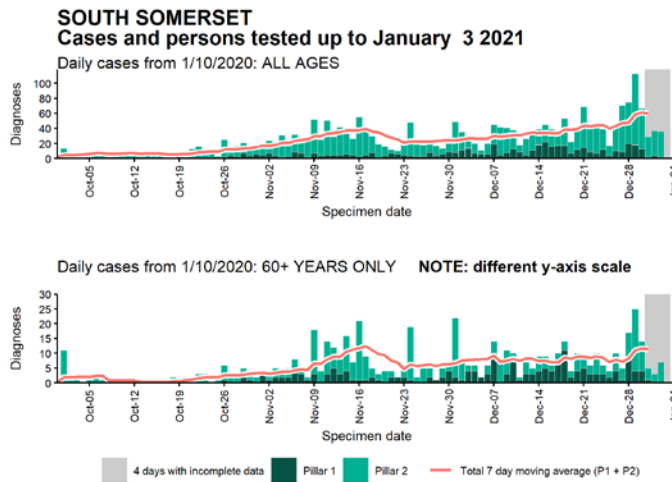
# Case numbers, testing numbers and positivity, South Hams : 01 Sep to 03 Jan 2021



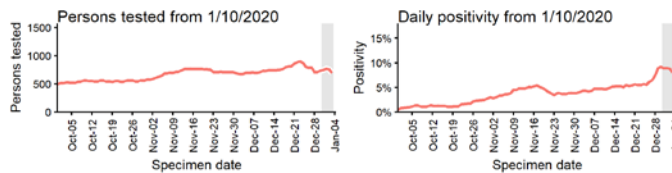
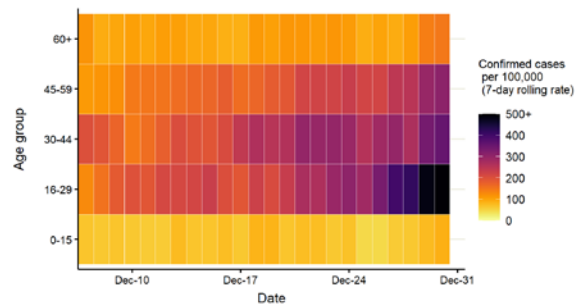
Data from SGSS. Produced by Outbreak Surveillance Team, PHE



## Case numbers, testing numbers and positivity, South Somerset : 01 Sep to 03 Jan 2021

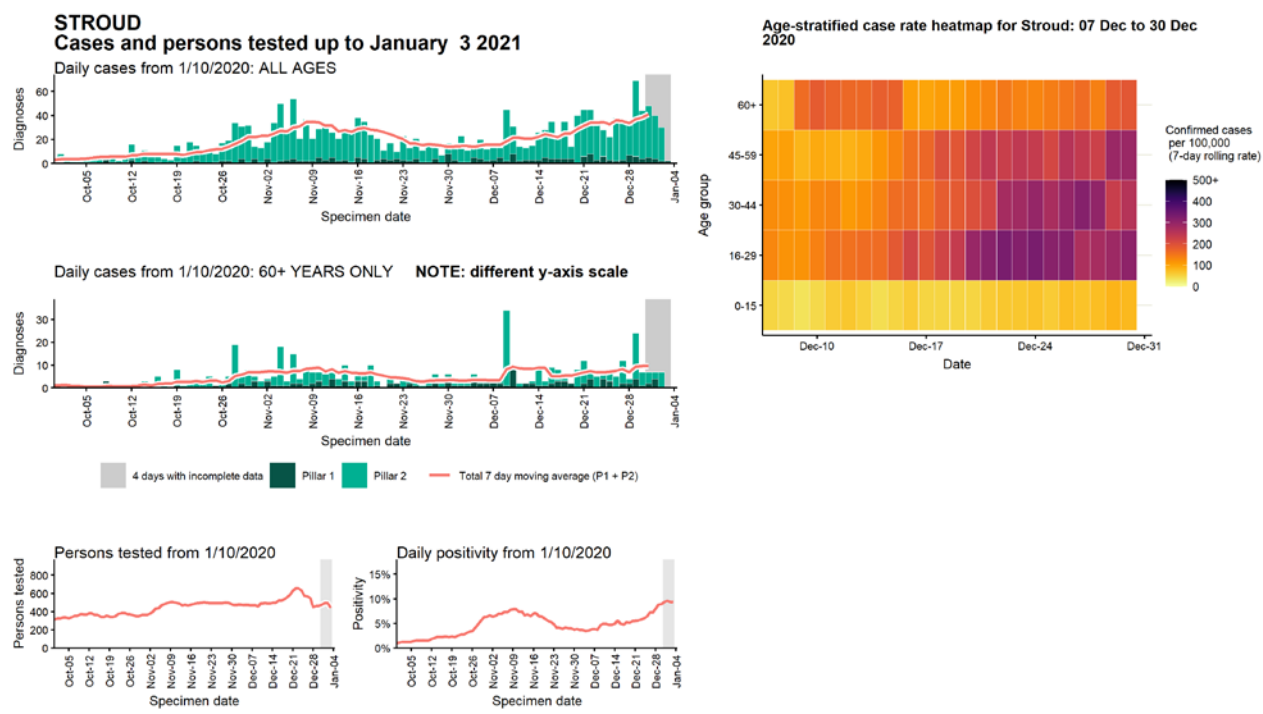


Age-stratified case rate heatmap for South Somerset: 07 Dec to 30 Dec 2020



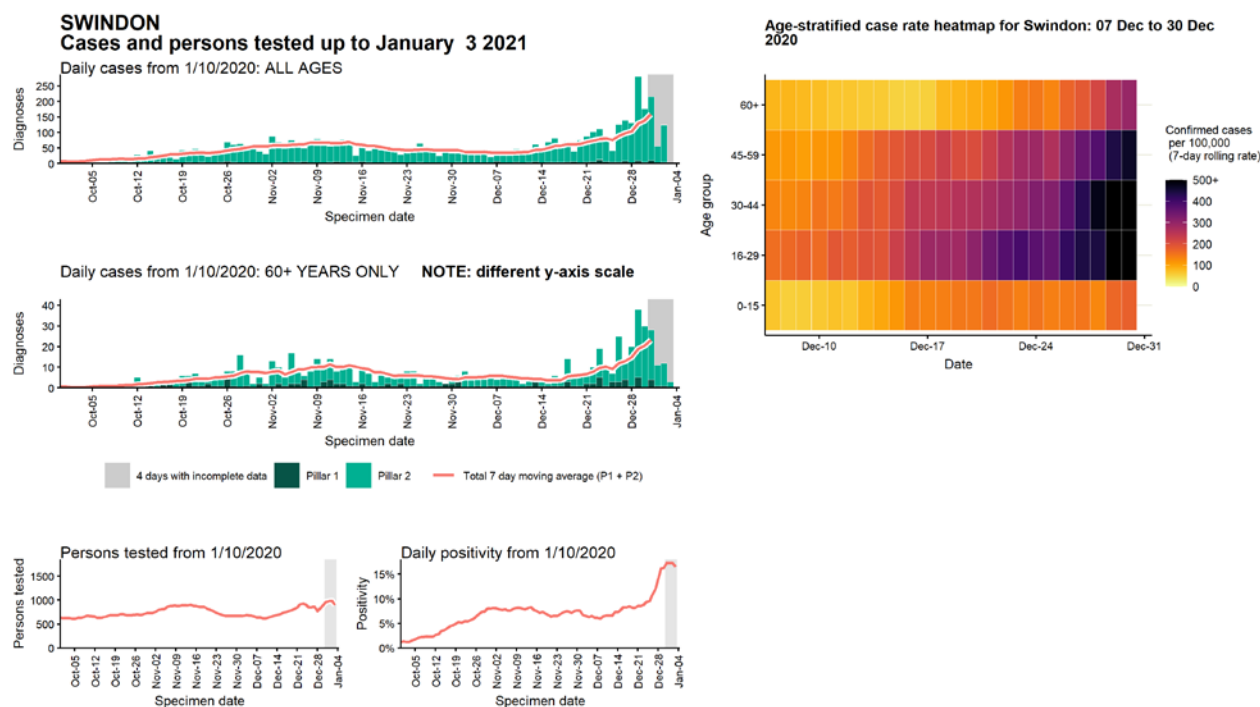
Data from SGSS. Produced by Outbreak Surveillance Team, PHE

# Case numbers, testing numbers and positivity, Stroud : 01 Sep to 03 Jan 2021



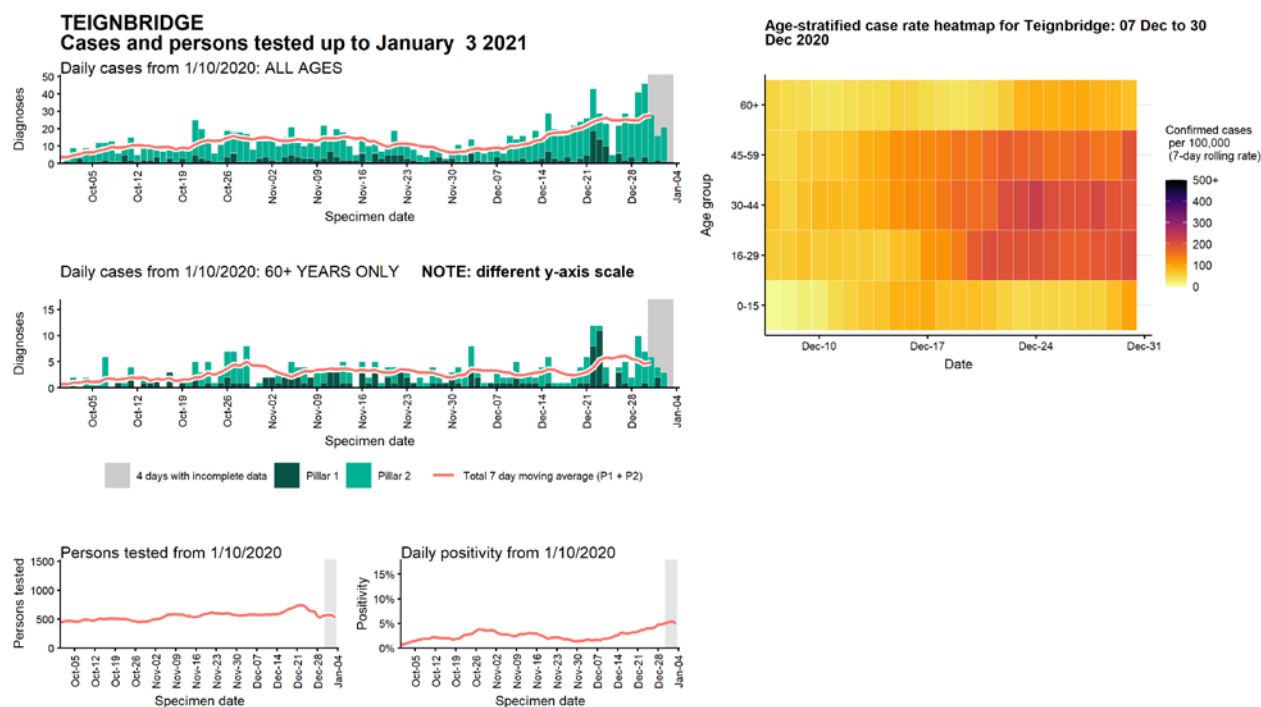
Data from SGSS. Produced by Outbreak Surveillance Team, PHE

# Case numbers, testing numbers and positivity, Swindon : 01 Sep to 03 Jan 2021



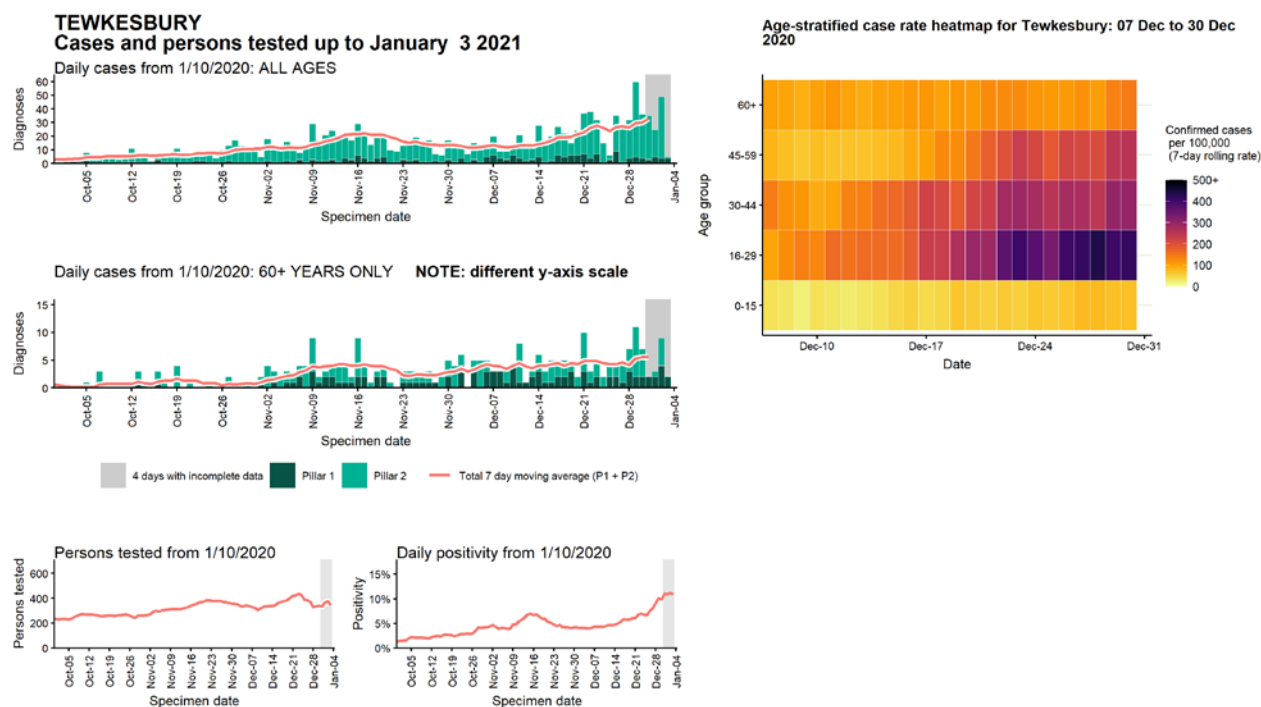
Data from SGSS. Produced by Outbreak Surveillance Team, PHE

Case numbers, testing numbers and positivity, Teignbridge : 01 Sep to 03 Jan 2021



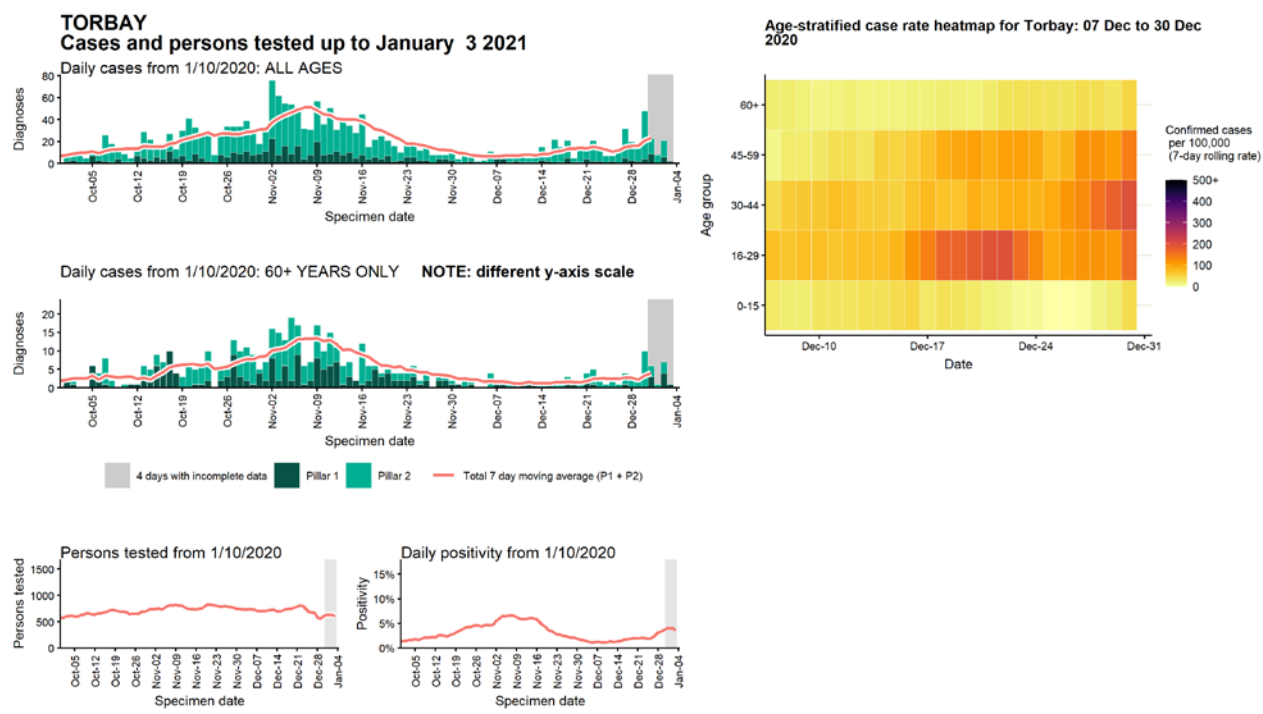
Data from SGSS. Produced by Outbreak Surveillance Team, PHE

Case numbers, testing numbers and positivity, Tewkesbury : 01 Sep to 03 Jan 2021



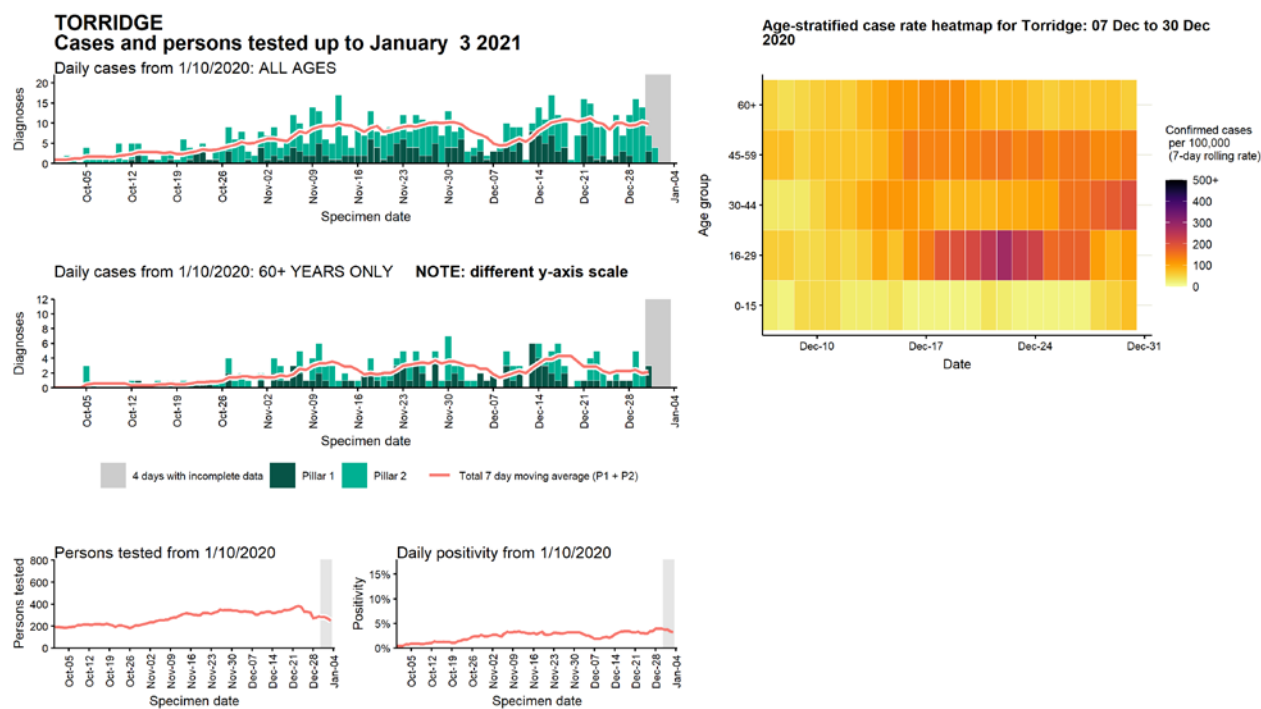
Data from SGSS. Produced by Outbreak Surveillance Team, PHE

# Case numbers, testing numbers and positivity, Torbay : 01 Sep to 03 Jan 2021



Data from SGSS. Produced by Outbreak Surveillance Team, PHE

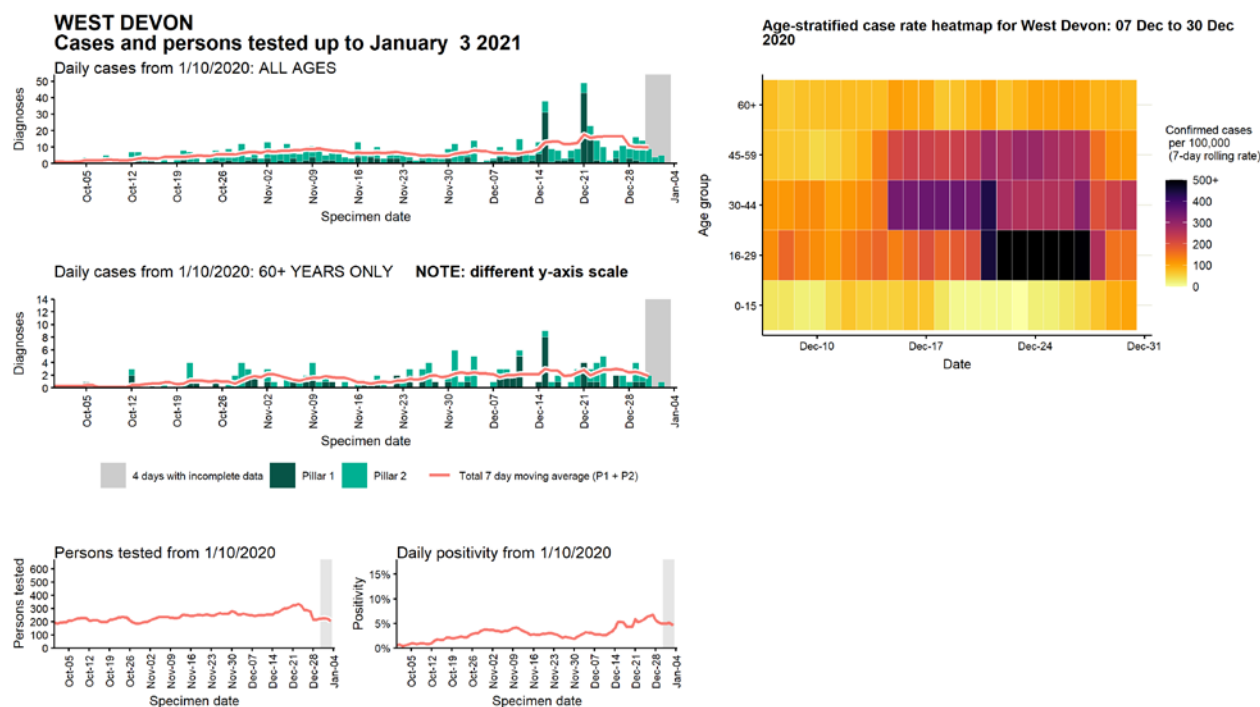
# Case numbers, testing numbers and positivity, Torridge : 01 Sep to 03 Jan 2021



Data from SGSS. Produced by Outbreak Surveillance Team, PHE

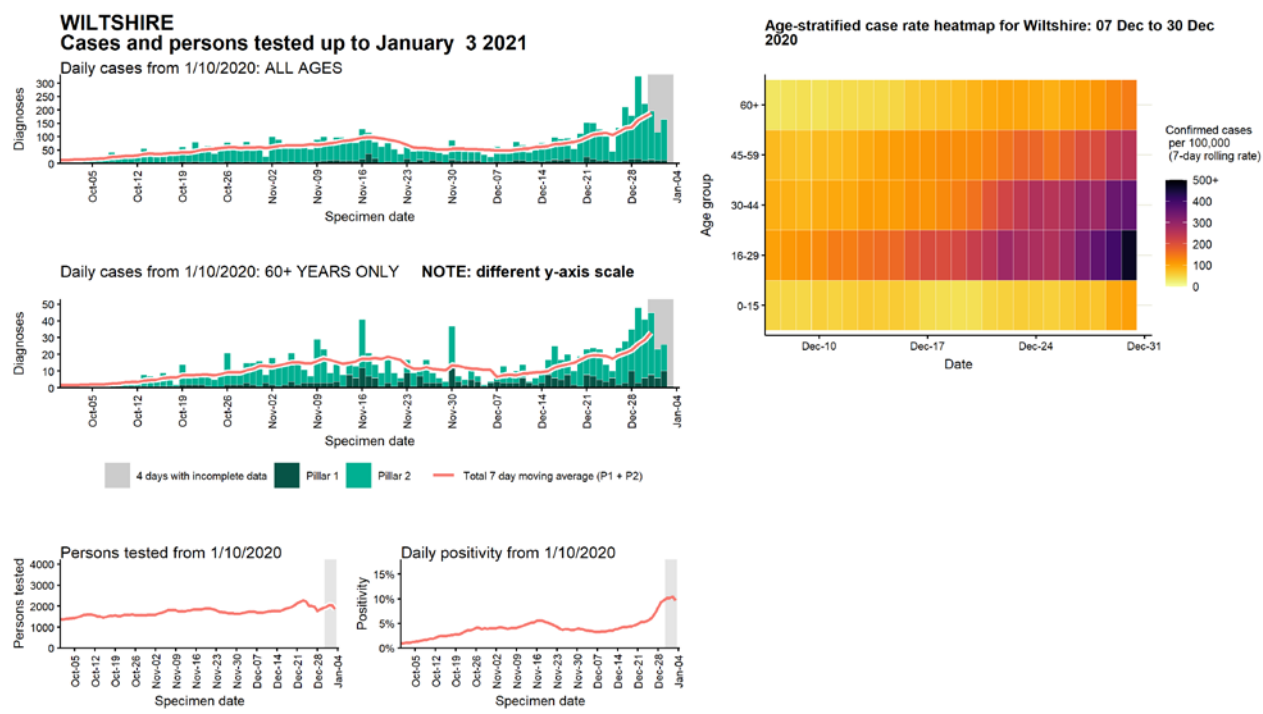


Case numbers, testing numbers and positivity, West Devon : 01 Sep to 03 Jan 2021



Data from SGSS. Produced by Outbreak Surveillance Team, PHE

Case numbers, testing numbers and positivity, Wiltshire : 01 Sep to 03 Jan 2021



Data from SGSS. Produced by Outbreak Surveillance Team, PHE

© Crown copyright 2020

[www.gov.uk/dhsc](http://www.gov.uk/dhsc)

This publication is licensed under the terms of the Open Government Licence v3.0 except where otherwise stated. To view this licence, visit [nationalarchives.gov.uk/doc/open-government-licence/version/3](http://nationalarchives.gov.uk/doc/open-government-licence/version/3)

Where we have identified any third party copyright information you will need to obtain permission from the copyright holders concerned.

