



Department  
of Health &  
Social Care

# North West: lower tier local authority watchlist – epidemiological charts

Produced 04 January 2021

## NOTES

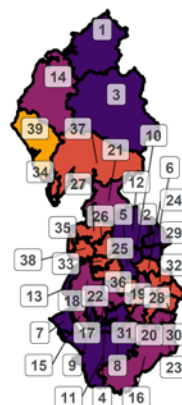
- This data is provided by Public Health England for the purpose of monitoring and supporting the management of Covid-19 infections in Local Authorities.
- The reports are produced using 2019 ONS population data
- If you would like to know the weekly trend for the case rate charts and persons tested chart please see Lower-tier local authority watchlist.

## Weekly case rate per 100,000 population by local authority: 24 Dec to 30 Dec 2020

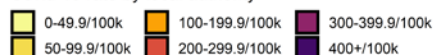
Rank	Local Authority	Case Rate (per 100,000)	Number of cases (1 week)
1	Carlisle	765.6	832
2	Burnley	671.4	597
3	Eden	585.9	312
4	Halton	532.4	689
5	Blackburn with Darwen	511.0	765
6	Pendle	487.5	449
7	Wirral	483.0	1565
8	Warrington	471.9	991
9	Knowsley	454.1	685
10	Hyndburn	439.3	356
11	Cheshire West and Chester	434.6	1491
12	Ribble Valley	423.7	258
13	Sefton	412.1	1139
14	Allerdale	397.9	389
15	Liverpool	385.1	1918
16	Cheshire East	378.8	1455
17	St. Helens	334.5	604
18	West Lancashire	333.3	381
19	Bury	329.9	630

Rank	Local Authority	Case Rate (per 100,000)	Number of cases (1 week)
20	Trafford	328.6	780
21	Lancaster	323.9	473
22	Wigan	311.3	1023
23	Stockport	300.6	882
24	Rossendale	299.4	214
25	Chorley	292.7	346
26	Preston	290.6	416
27	Wyre	283.7	318
28	Manchester	274.6	1518
29	Rochdale	265.7	591
30	Tameside	253.9	575
31	Salford	251.9	652
32	Oldham	251.8	597
33	South Ribble	251.8	279
34	Barrow-in-Furness	247.6	166
35	Blackpool	242.4	338
36	Bolton	240.3	691
37	South Lakeland	234.1	246
38	Fylde	211.7	171
39	Copeland	198.0	135

**North West**  
**COVID-19 cases: 24 Dec to 30 Dec 2020**  
 Weekly case rates per 100,000 population by local authority



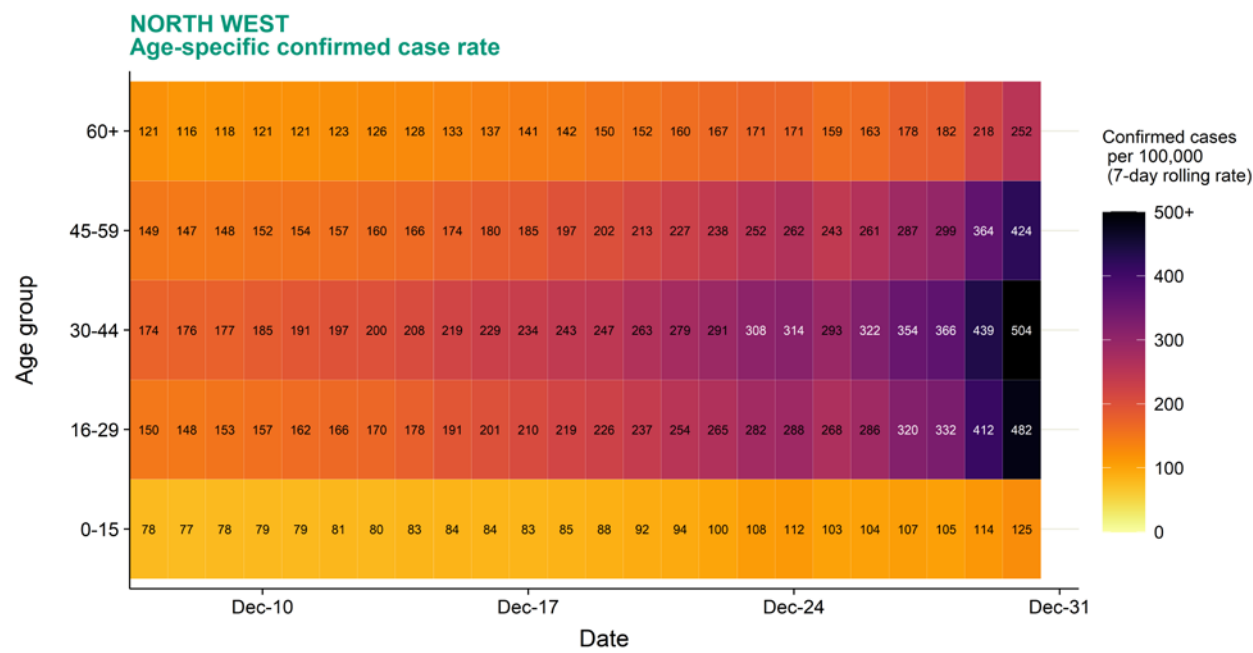
Covid-19 rate by local authority



Data from SGSS; Pillar 1 and 2 testing. Figure by Outbreak Surveillance Team, Public Health England.

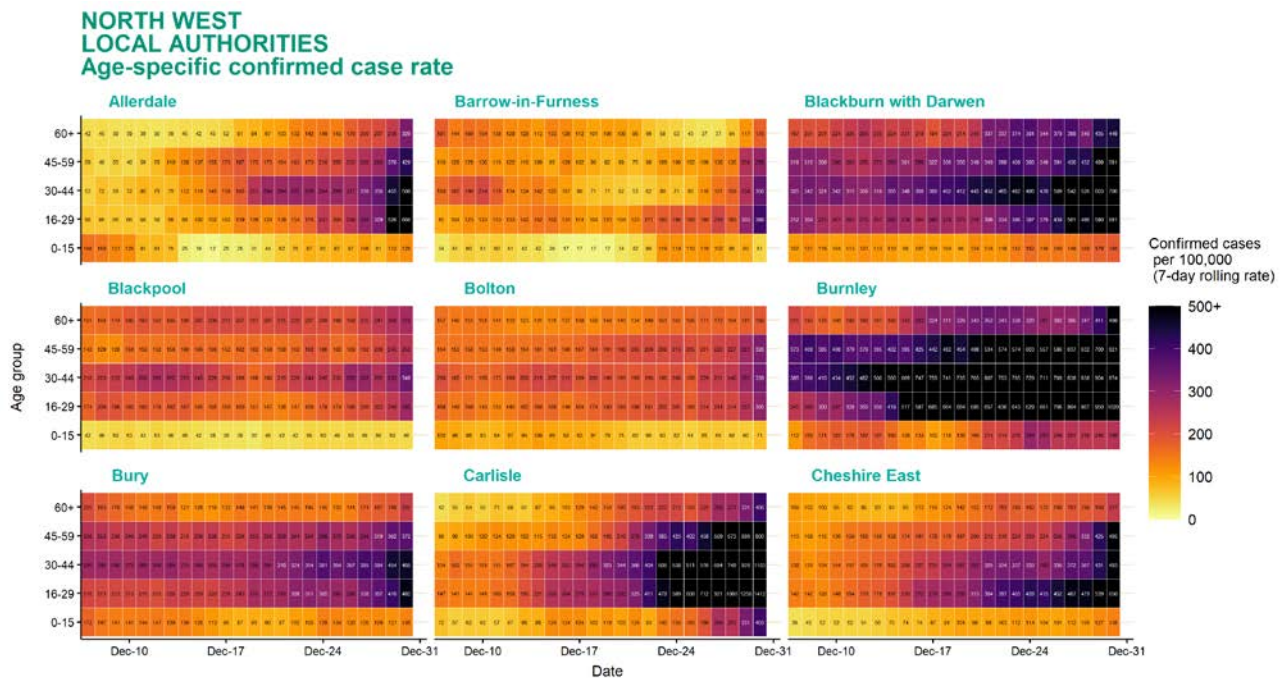
Contains National Statistics data including 2019 population estimates Â© Crown copyright and database right 2020

# Age-stratified heatmap of weekly case rate for North West : 07 Dec to 30 Dec 2020



Source: Case data from SGSS. Produced by Outbreak Surveillance Team, PHE  
Contains National Statistics data Â© Crown copyright and database right 2020

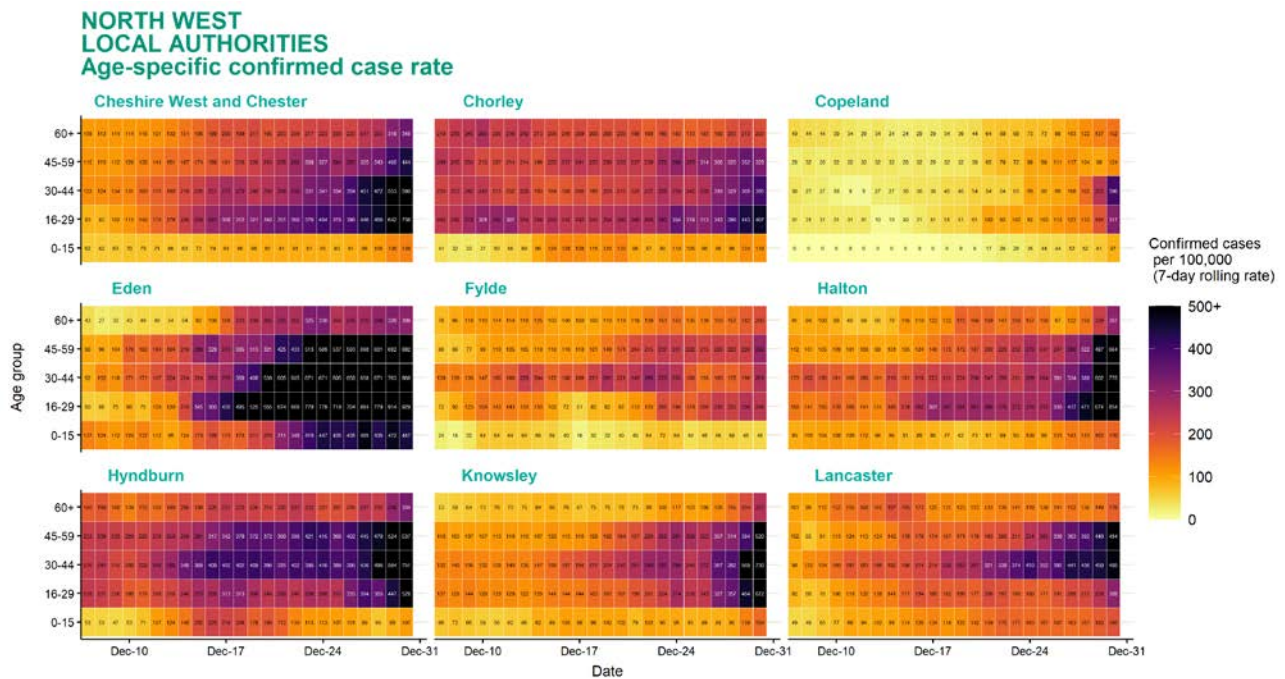
## Age-stratified heatmap of weekly case rate by local authority for North West : 07 Dec to 30 Dec 2020



Source: Case data from SGSS. Produced by Outbreak Surveillance Team, PHE

Contains National Statistics data Â© Crown copyright and database right 2020

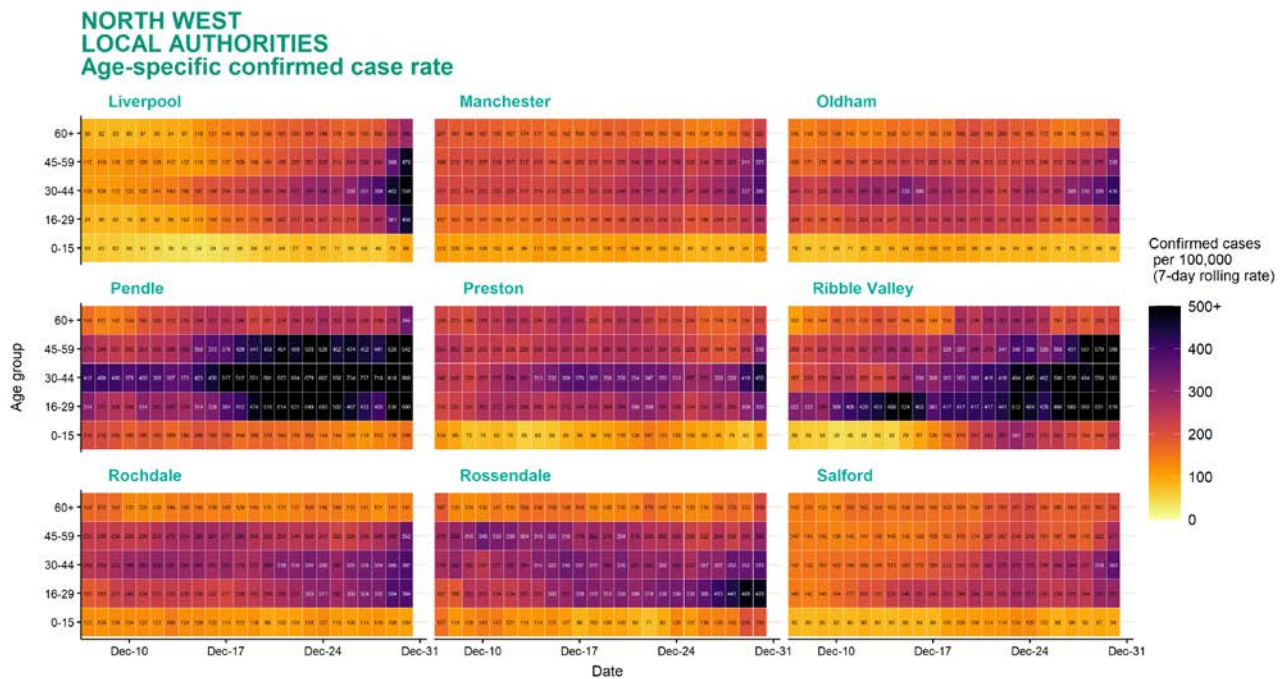
## Age-stratified heatmap of weekly case rate by local authority for North West : 07 Dec to 30 Dec 2020



Source: Case data from SGSS. Produced by Outbreak Surveillance Team, PHE

Contains National Statistics data Â© Crown copyright and database right 2020

## Age-stratified heatmap of weekly case rate by local authority for North West : 07 Dec to 30 Dec 2020

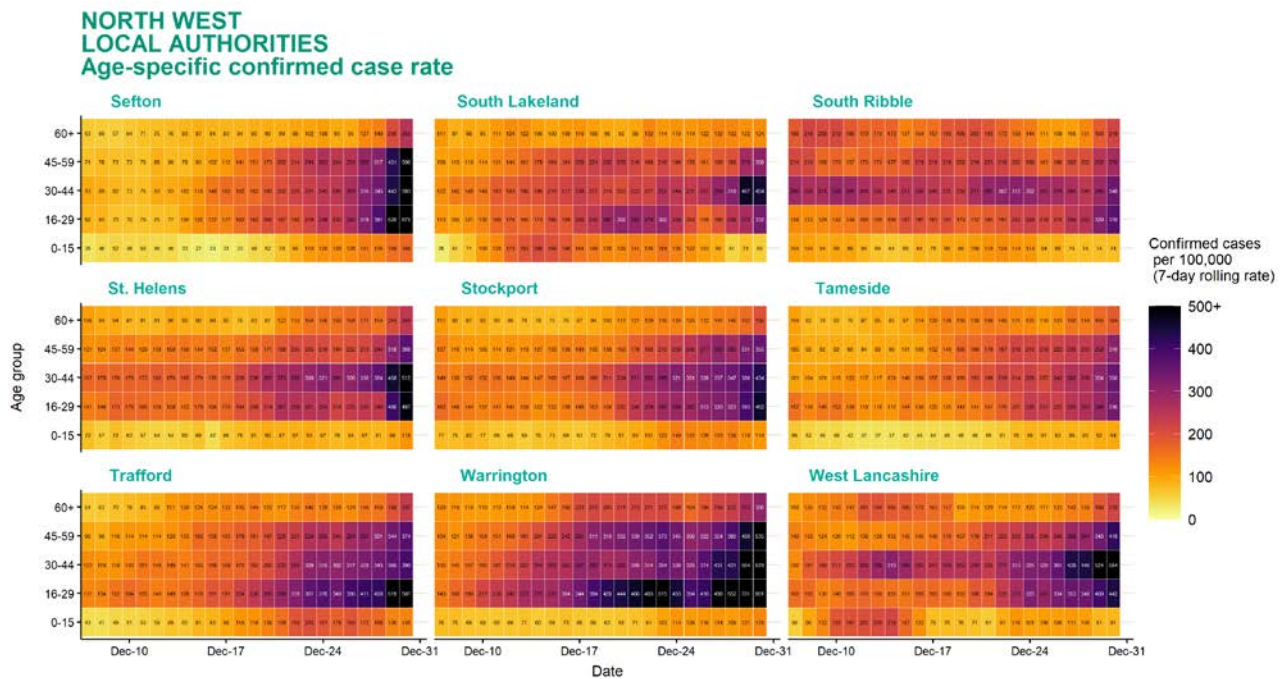


Source: Case data from SGSS. Produced by Outbreak Surveillance Team, PHE

Contains National Statistics data Â© Crown copyright and database right 2020



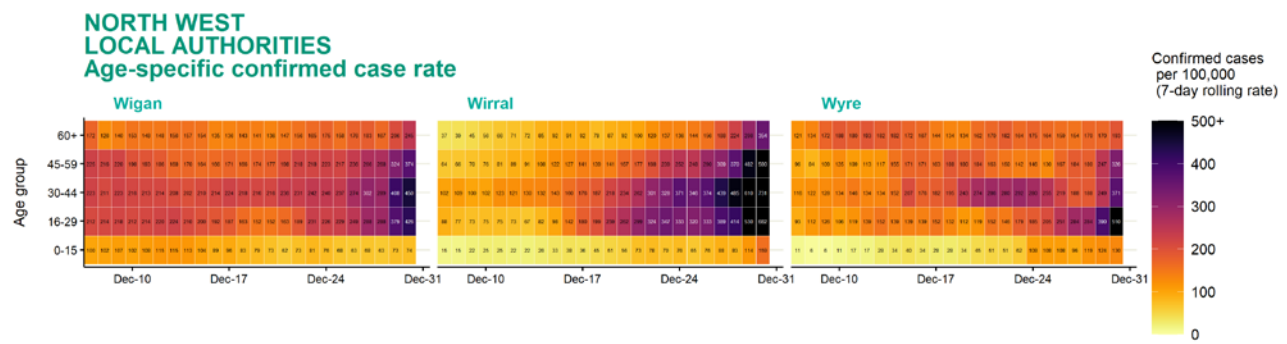
# Age-stratified heatmap of weekly case rate by local authority for North West : 07 Dec to 30 Dec 2020



Source: Case data from SGSS. Produced by Outbreak Surveillance Team, PHE

Contains National Statistics data Â© Crown copyright and database right 2020

# Age-stratified heatmap of weekly case rate by local authority for North West : 07 Dec to 30 Dec 2020



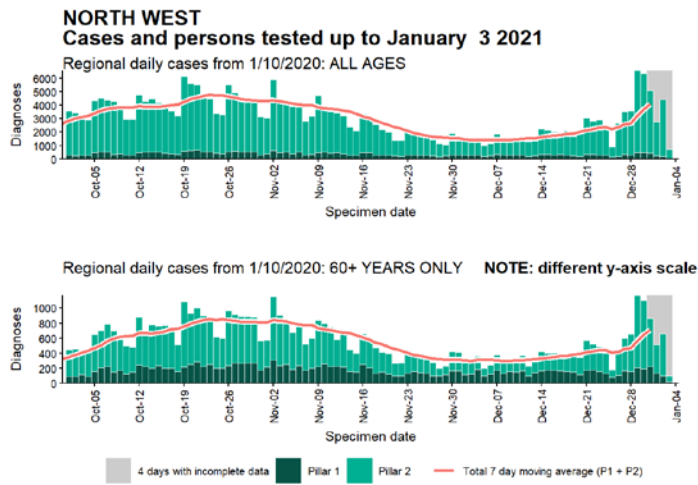
Date

Source: Case data from SGSS. Produced by Outbreak Surveillance Team, PHE

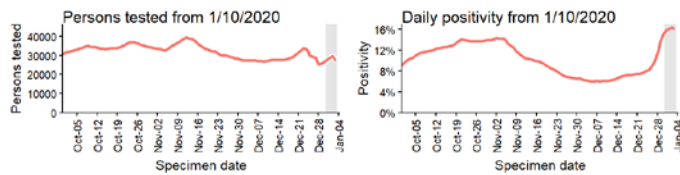
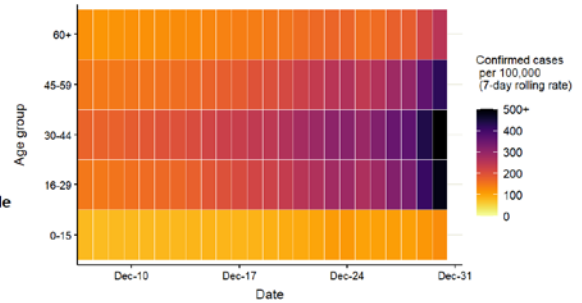
Contains National Statistics data Â© Crown copyright and database right 2020



## Regional case numbers, testing numbers and positivity, North West : 01 Sep to 03 Jan 2021

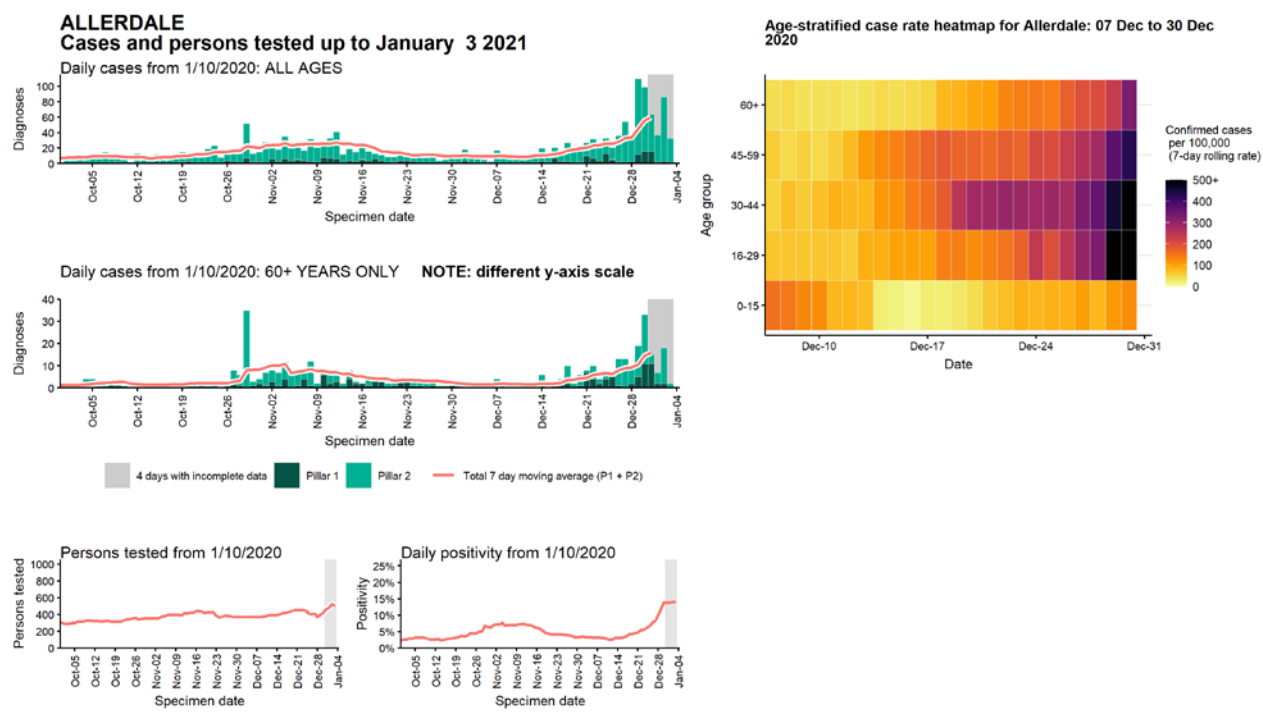


Regional age-stratified case rate heatmap for North West: 07 Dec to 30 Dec 2020



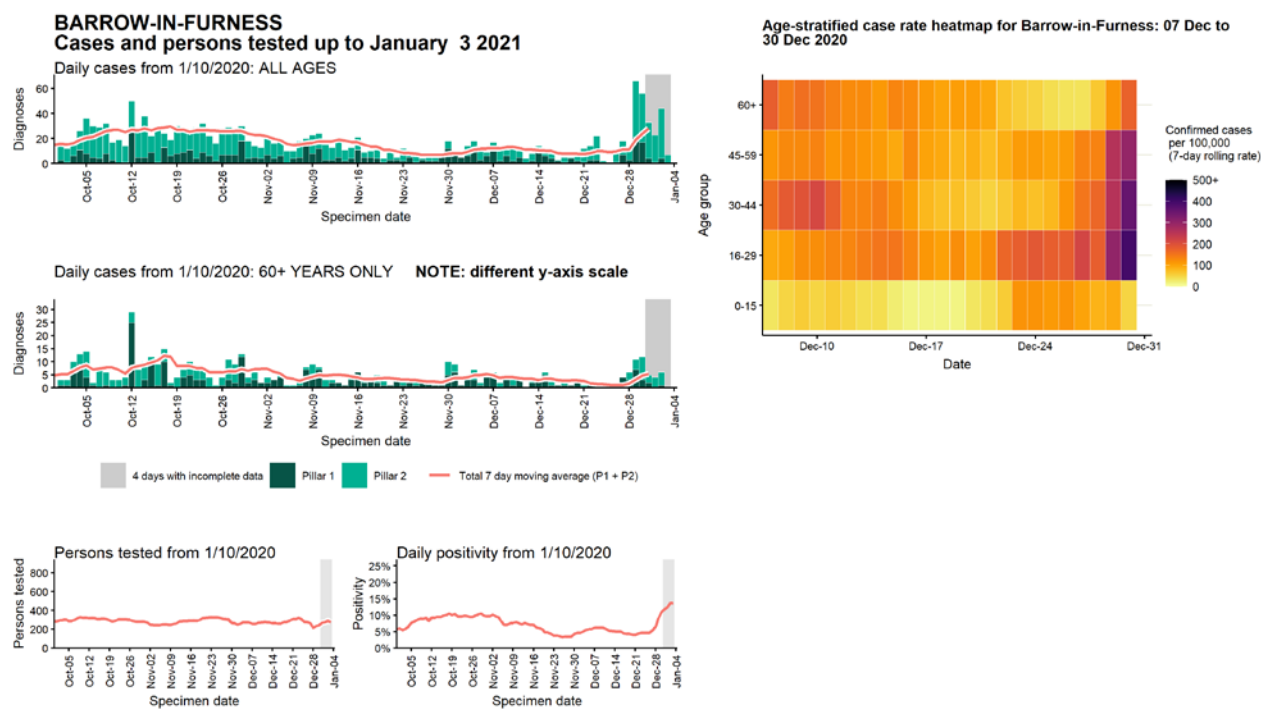
Data from SGSS. Produced by Outbreak Surveillance Team, PHE

# Case numbers, testing numbers and positivity, Allerdale : 01 Sep to 03 Jan 2021



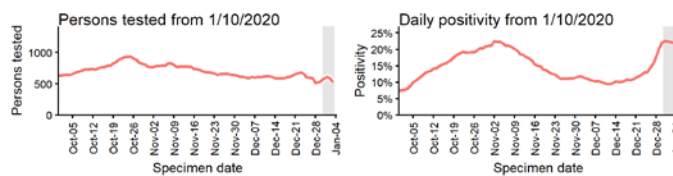
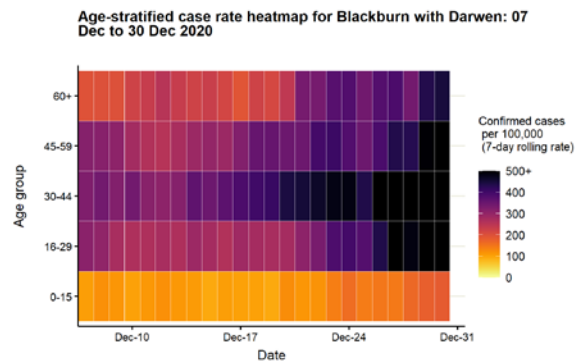
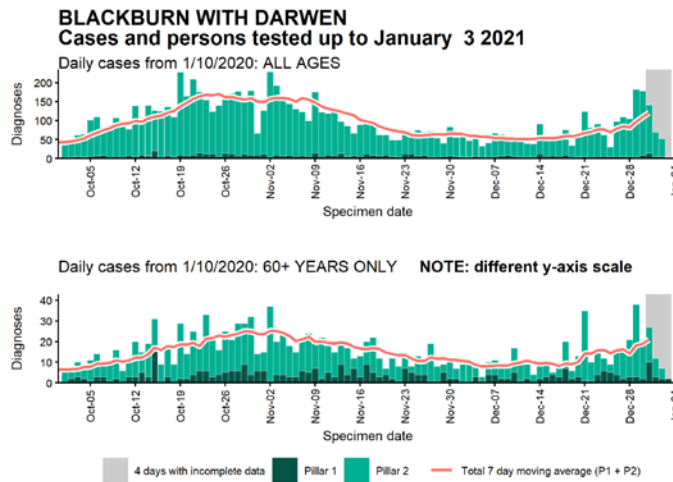
Data from SGSS. Produced by Outbreak Surveillance Team, PHE

# Case numbers, testing numbers and positivity, Barrow-in-Furness : 01 Sep to 03 Jan 2021



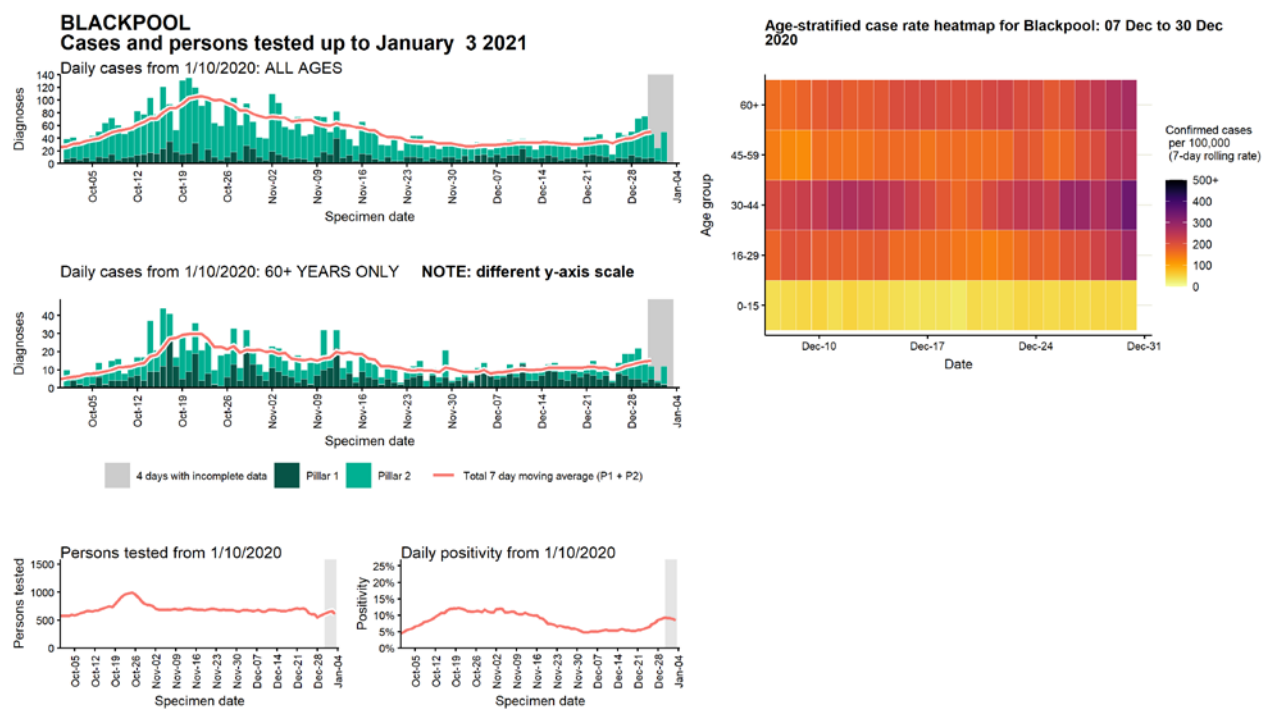
Data from SGSS. Produced by Outbreak Surveillance Team, PHE

## Case numbers, testing numbers and positivity, Blackburn with Darwen : 01 Sep to 03 Jan 2021



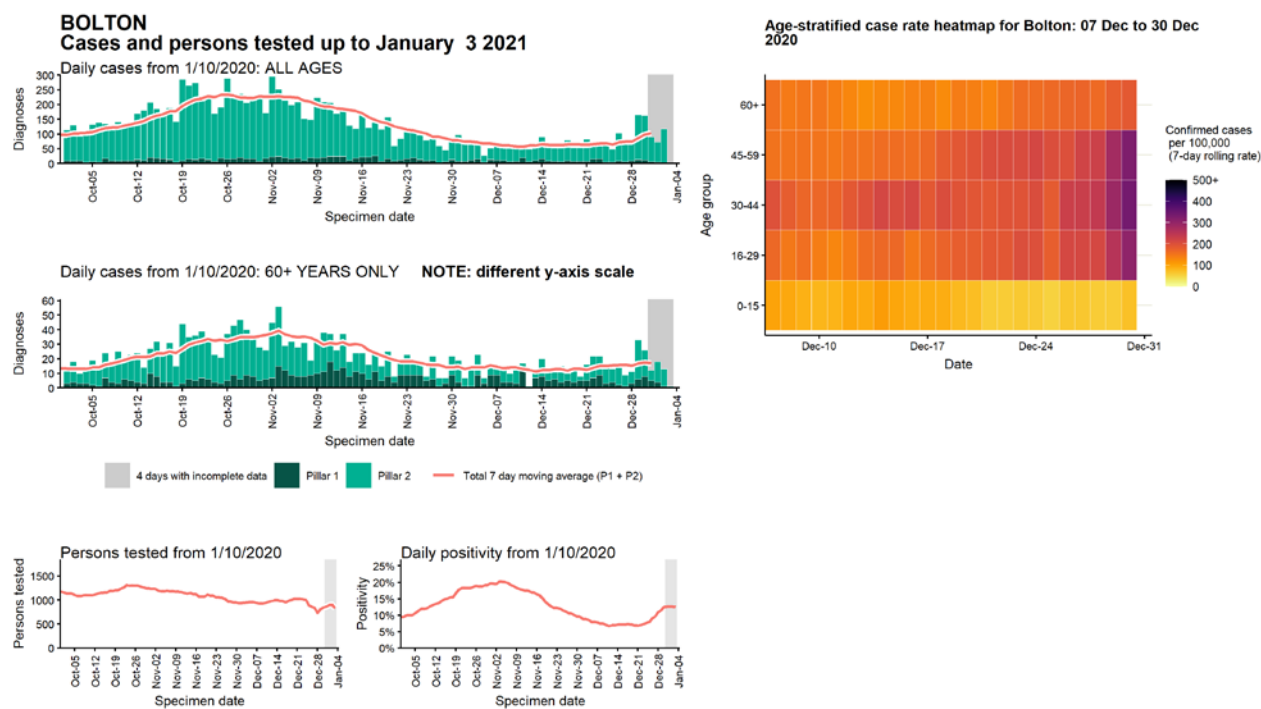
Data from SGSS. Produced by Outbreak Surveillance Team, PHE

# Case numbers, testing numbers and positivity, Blackpool : 01 Sep to 03 Jan 2021



Data from SGSS. Produced by Outbreak Surveillance Team, PHE

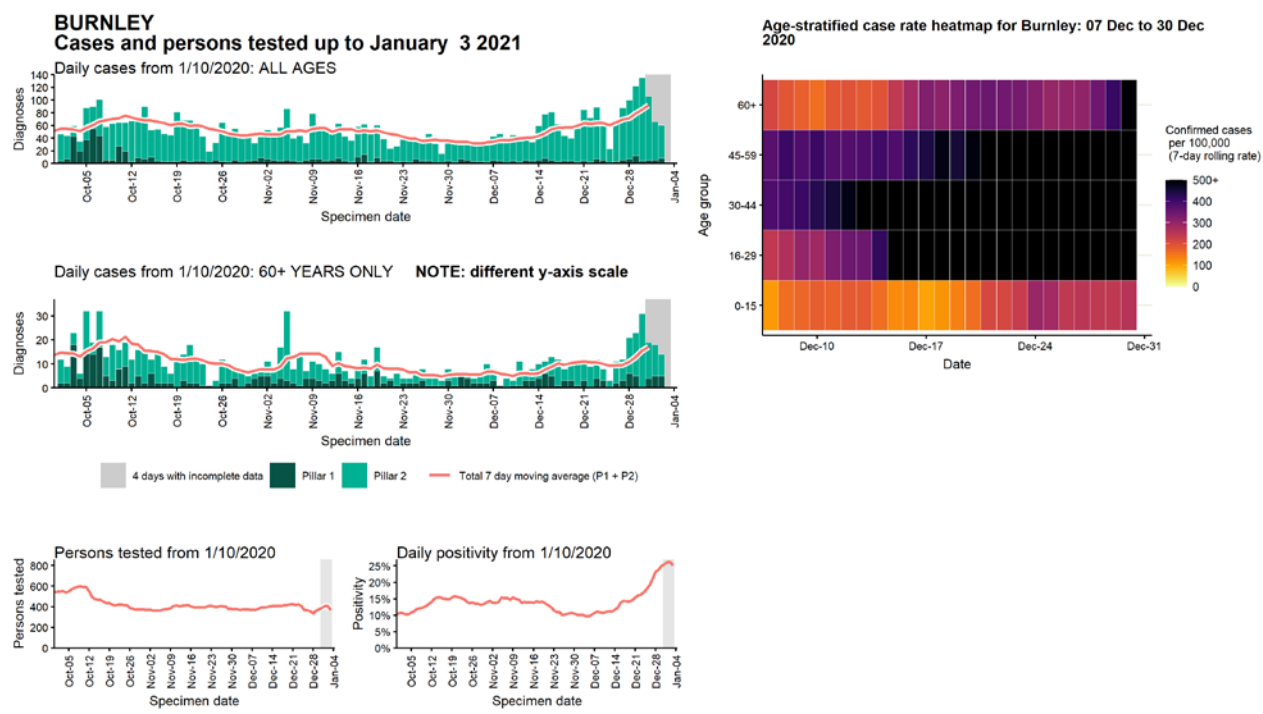
# Case numbers, testing numbers and positivity, Bolton : 01 Sep to 03 Jan 2021



Data from SGSS. Produced by Outbreak Surveillance Team, PHE

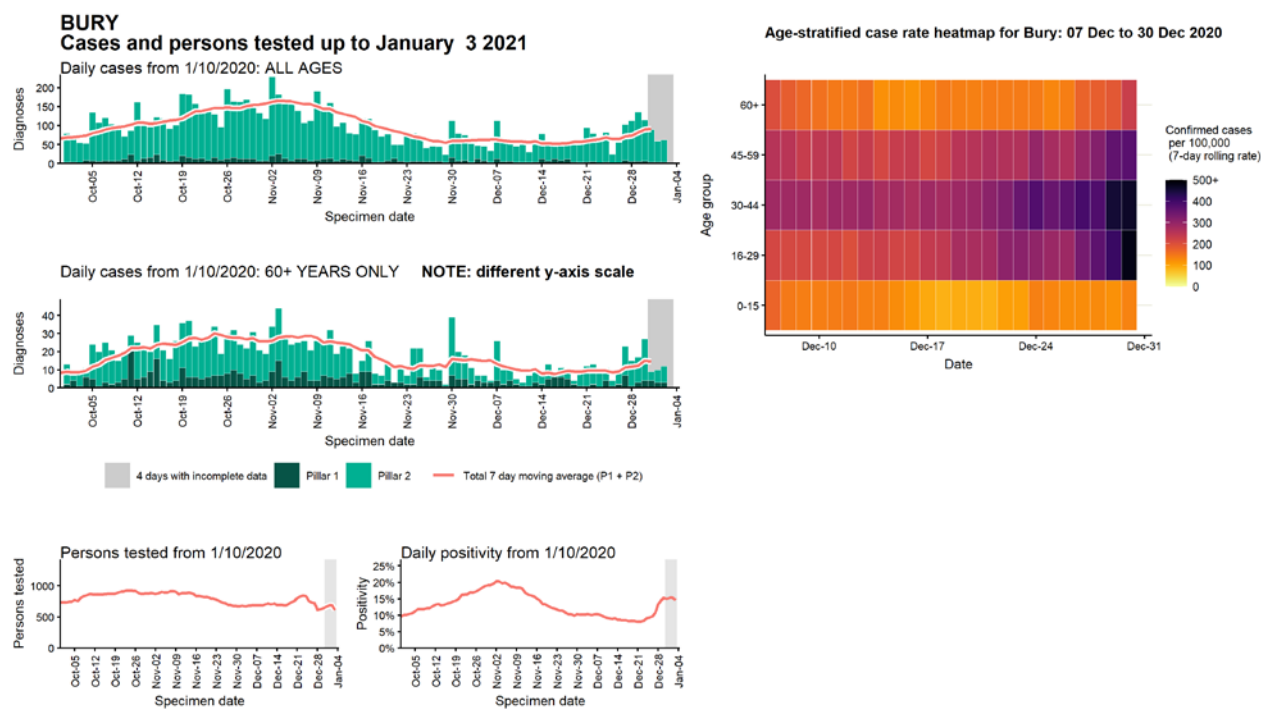


# Case numbers, testing numbers and positivity, Burnley : 01 Sep to 03 Jan 2021



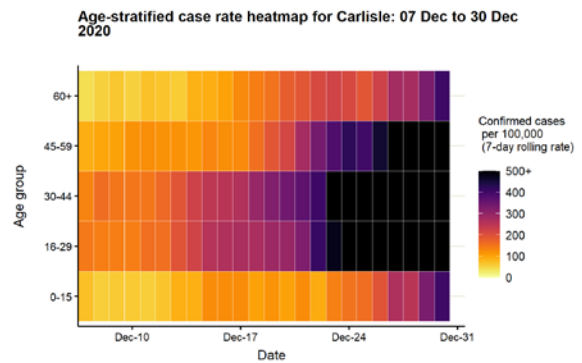
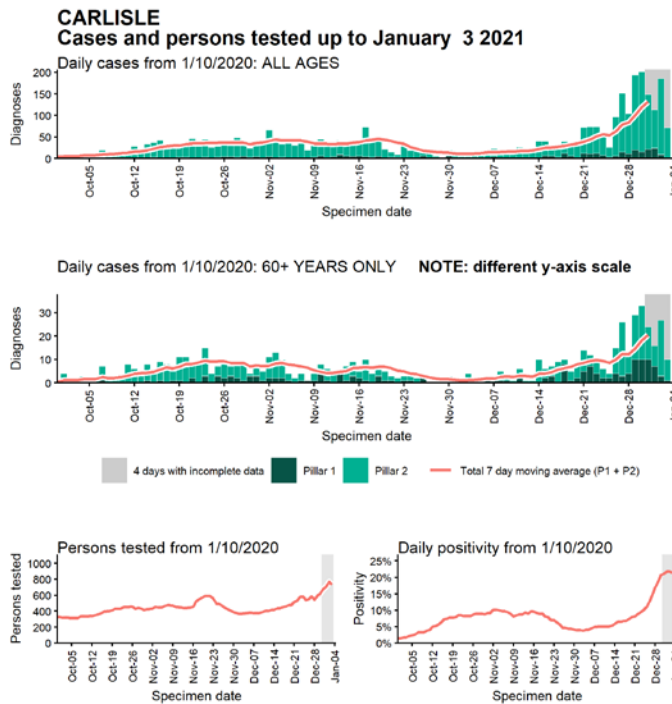
Data from SGSS. Produced by Outbreak Surveillance Team, PHE

# Case numbers, testing numbers and positivity, Bury : 01 Sep to 03 Jan 2021



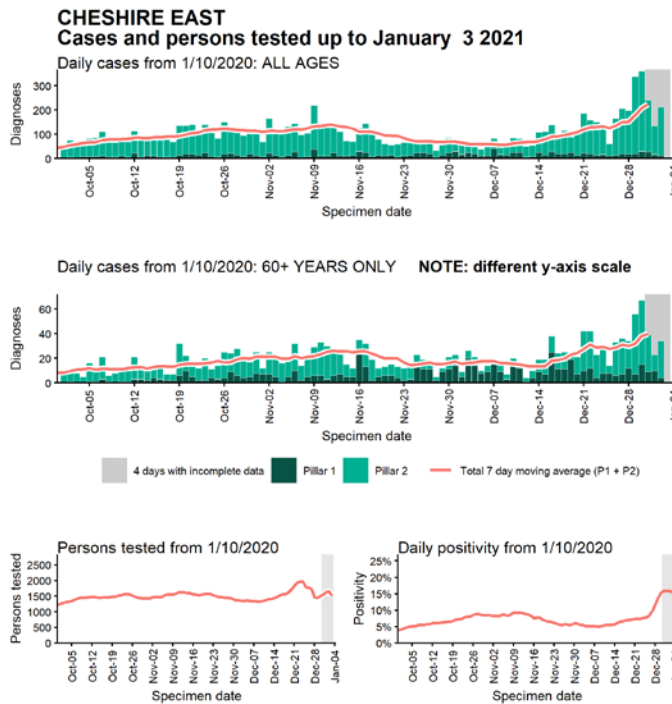
Data from SGSS. Produced by Outbreak Surveillance Team, PHE

## Case numbers, testing numbers and positivity, Carlisle : 01 Sep to 03 Jan 2021

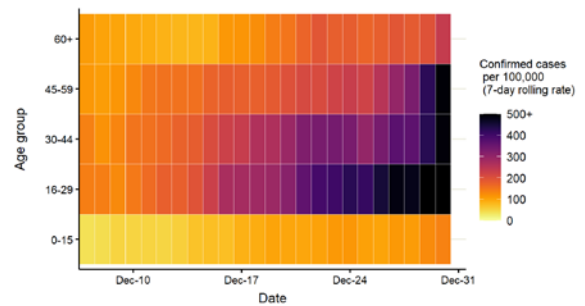


Data from SGSS. Produced by Outbreak Surveillance Team, PHE

## Case numbers, testing numbers and positivity, Cheshire East : 01 Sep to 03 Jan 2021

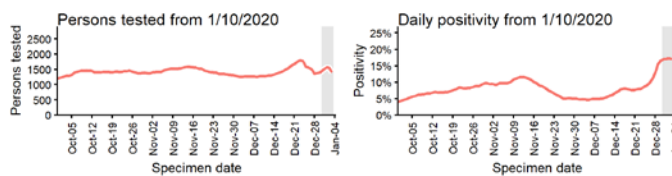
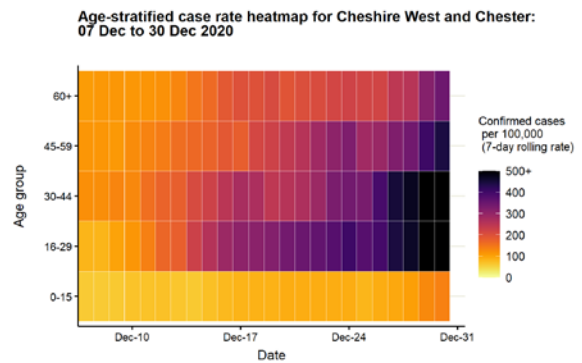
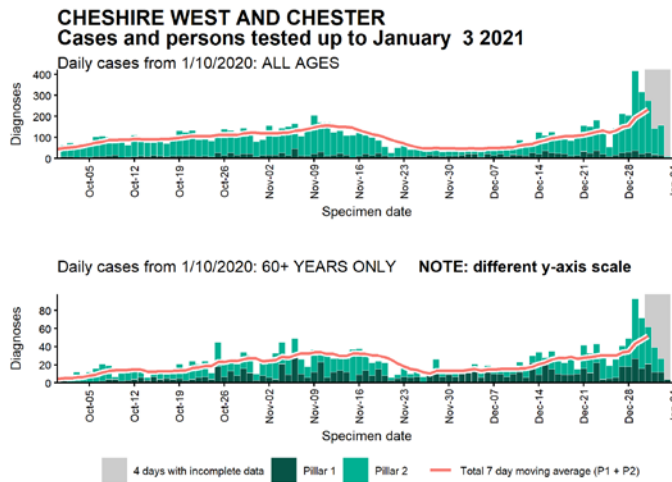


Age-stratified case rate heatmap for Cheshire East: 07 Dec to 30 Dec 2020



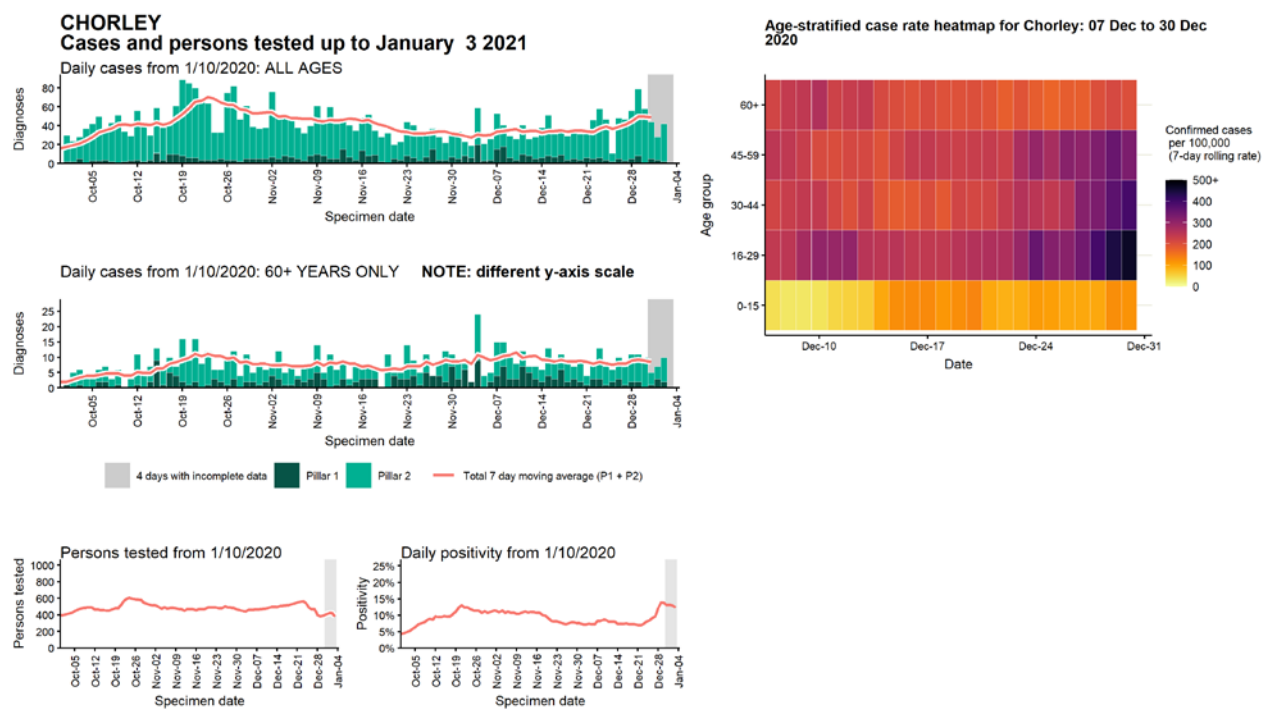
Data from SGSS. Produced by Outbreak Surveillance Team, PHE

## Case numbers, testing numbers and positivity, Cheshire West and Chester : 01 Sep to 03 Jan 2021



Data from SGSS. Produced by Outbreak Surveillance Team, PHE

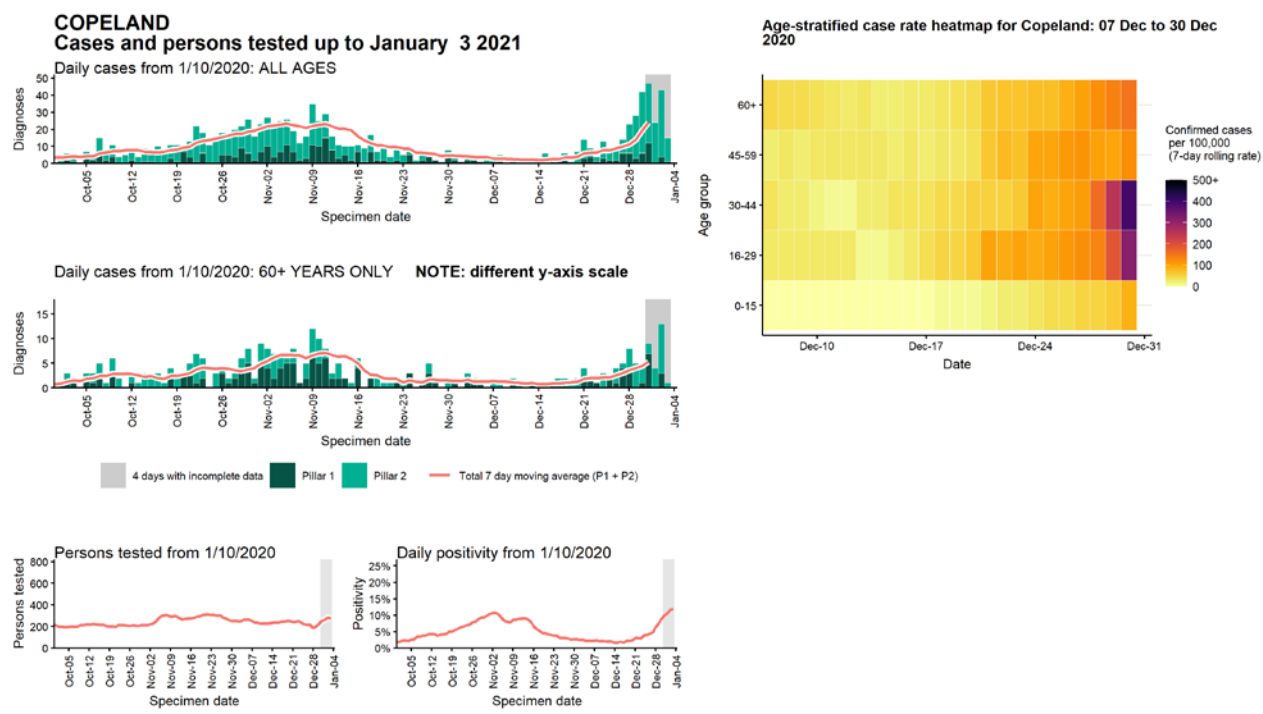
# Case numbers, testing numbers and positivity, Chorley : 01 Sep to 03 Jan 2021



Data from SGSS. Produced by Outbreak Surveillance Team, PHE

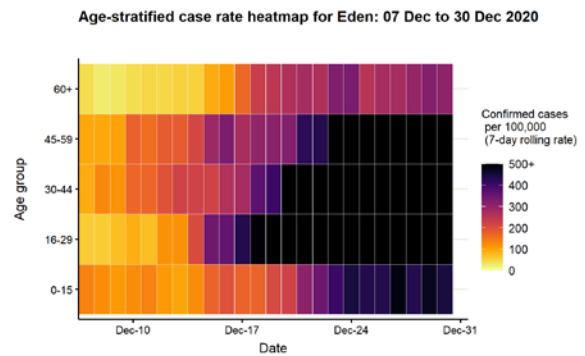
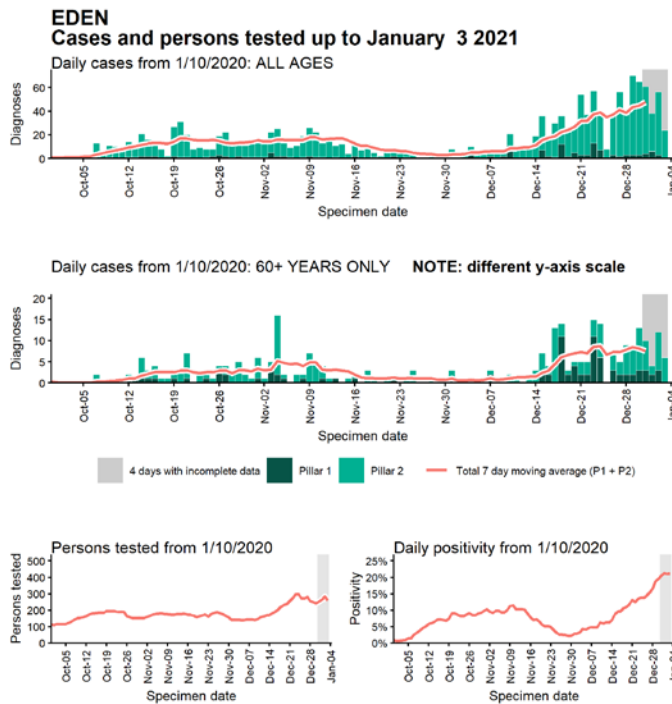


# Case numbers, testing numbers and positivity, Copeland : 01 Sep to 03 Jan 2021



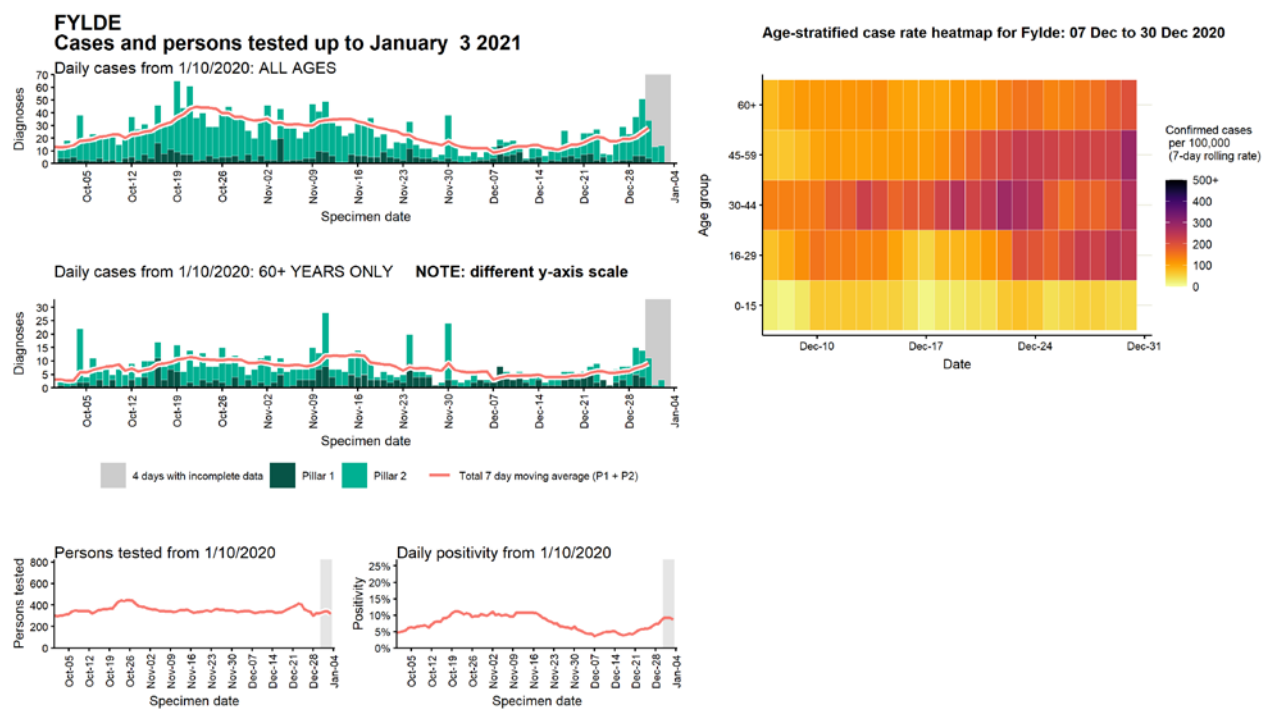
Data from SGSS. Produced by Outbreak Surveillance Team, PHE

## Case numbers, testing numbers and positivity, Eden : 01 Sep to 03 Jan 2021



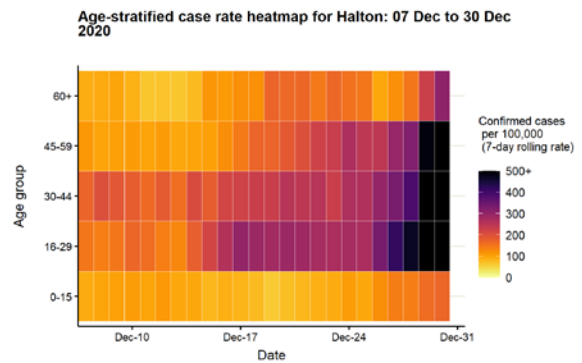
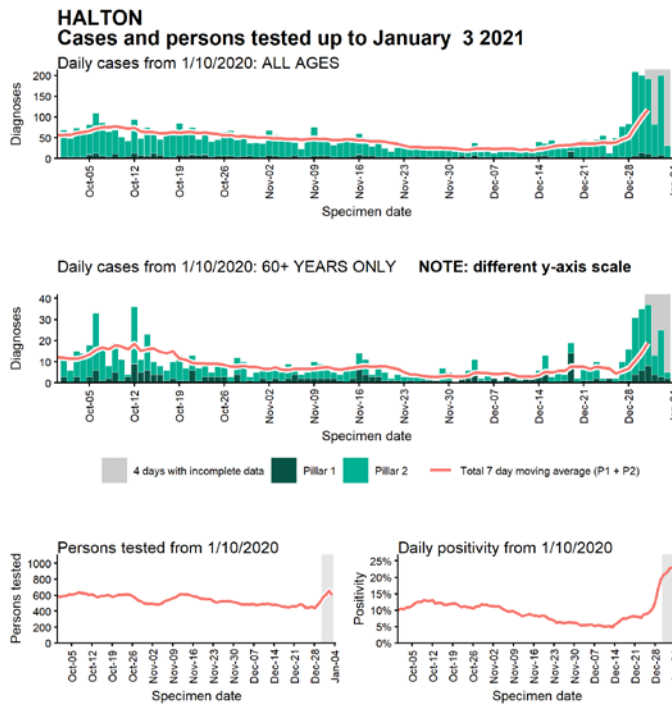
Data from SGSS. Produced by Outbreak Surveillance Team, PHE

# Case numbers, testing numbers and positivity, Fylde : 01 Sep to 03 Jan 2021



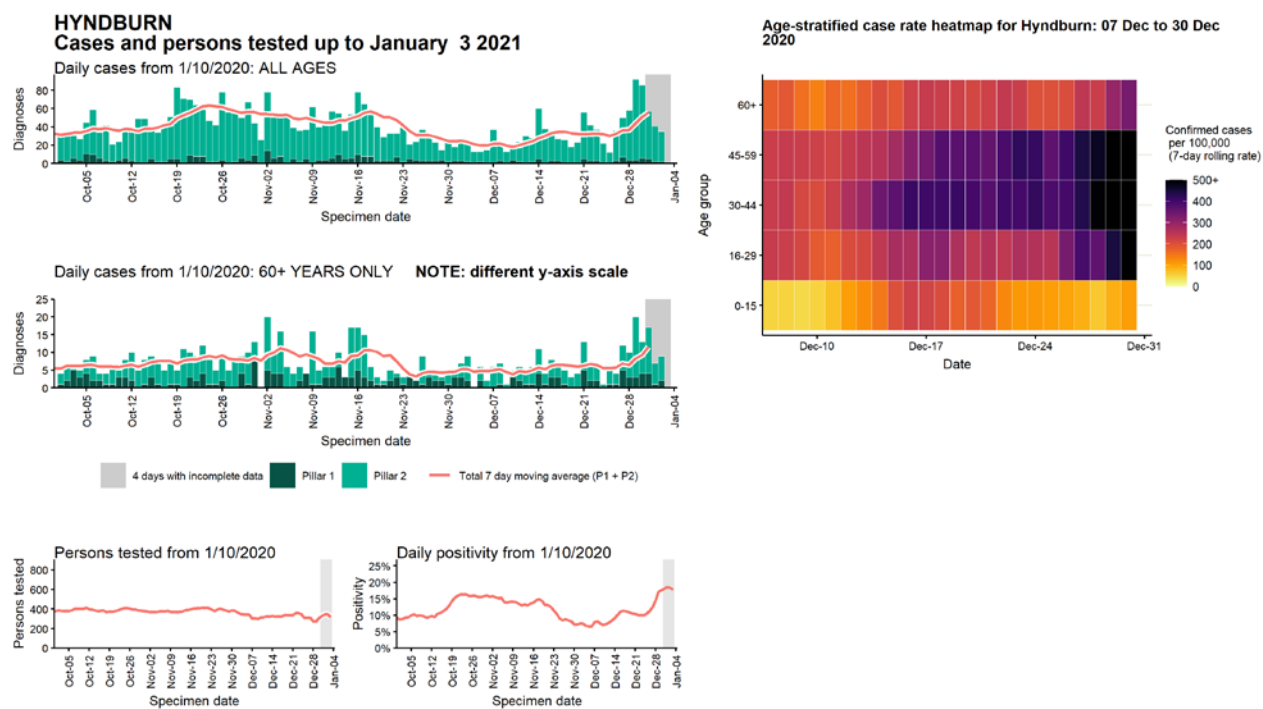
Data from SGSS. Produced by Outbreak Surveillance Team, PHE

## Case numbers, testing numbers and positivity, Halton : 01 Sep to 03 Jan 2021



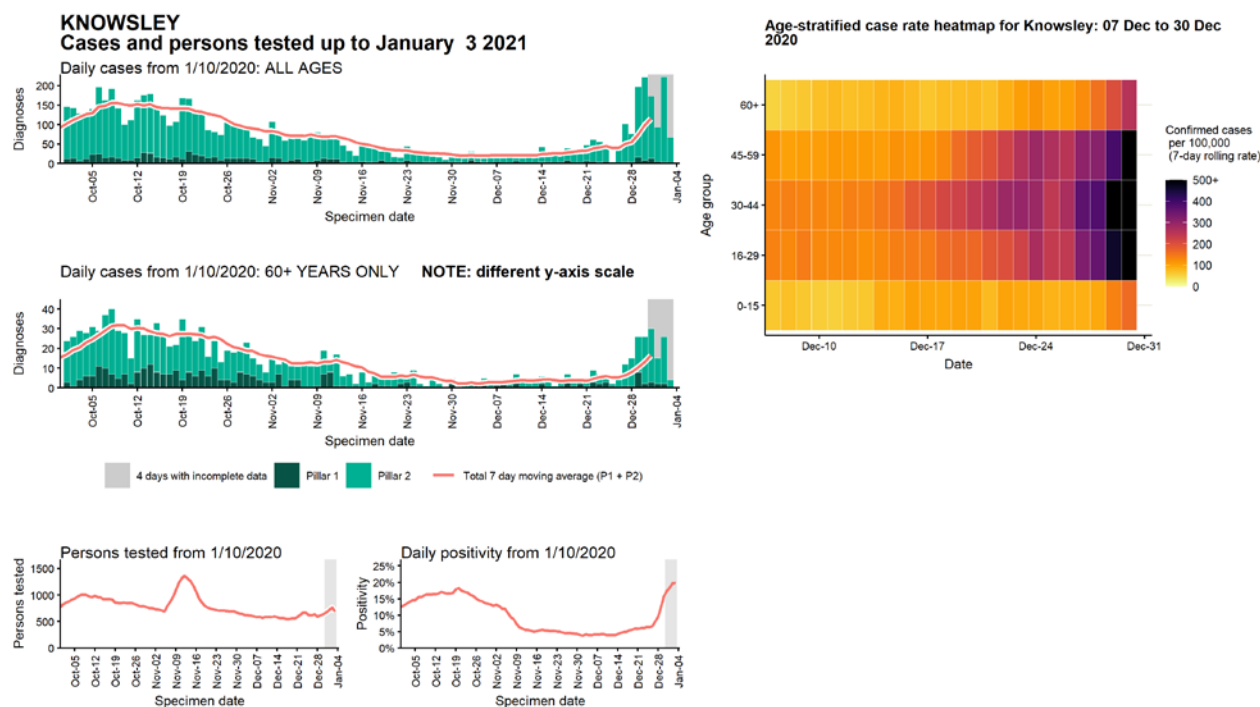
Data from SGSS. Produced by Outbreak Surveillance Team, PHE

# Case numbers, testing numbers and positivity, Hyndburn : 01 Sep to 03 Jan 2021



Data from SGSS. Produced by Outbreak Surveillance Team, PHE

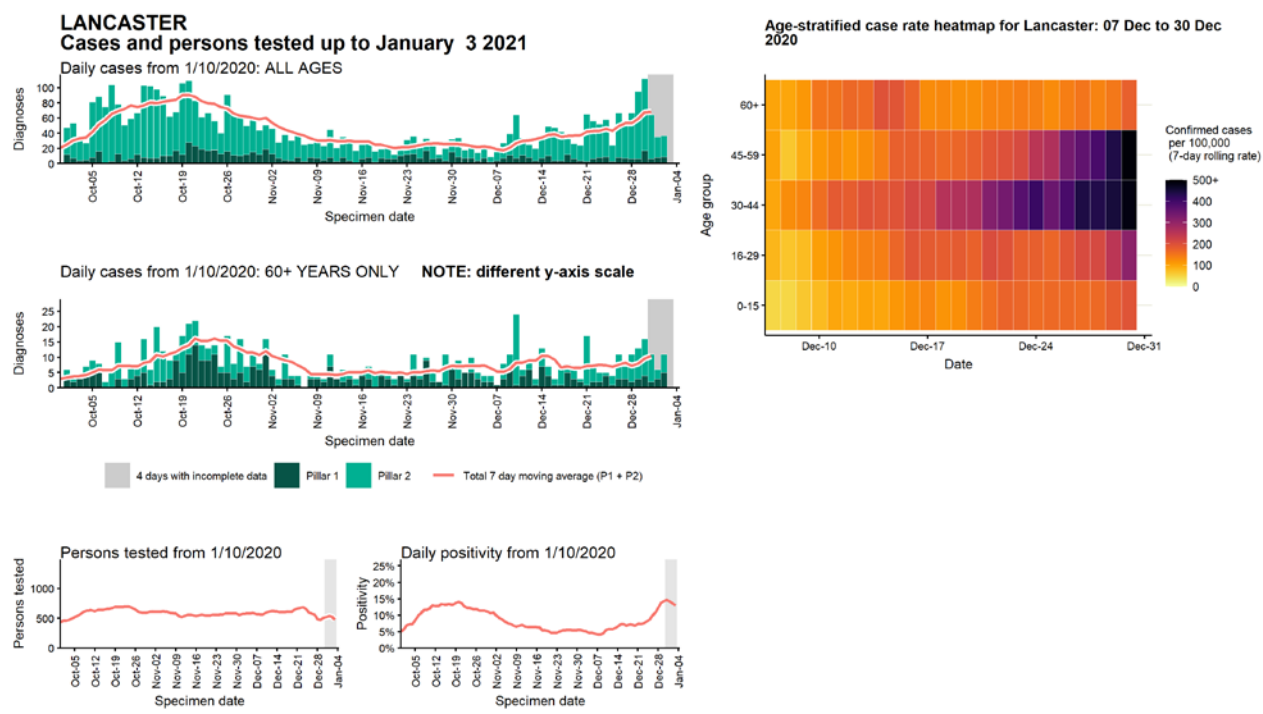
Case numbers, testing numbers and positivity, Knowsley : 01 Sep to 03 Jan 2021



Data from SGSS. Produced by Outbreak Surveillance Team, PHE

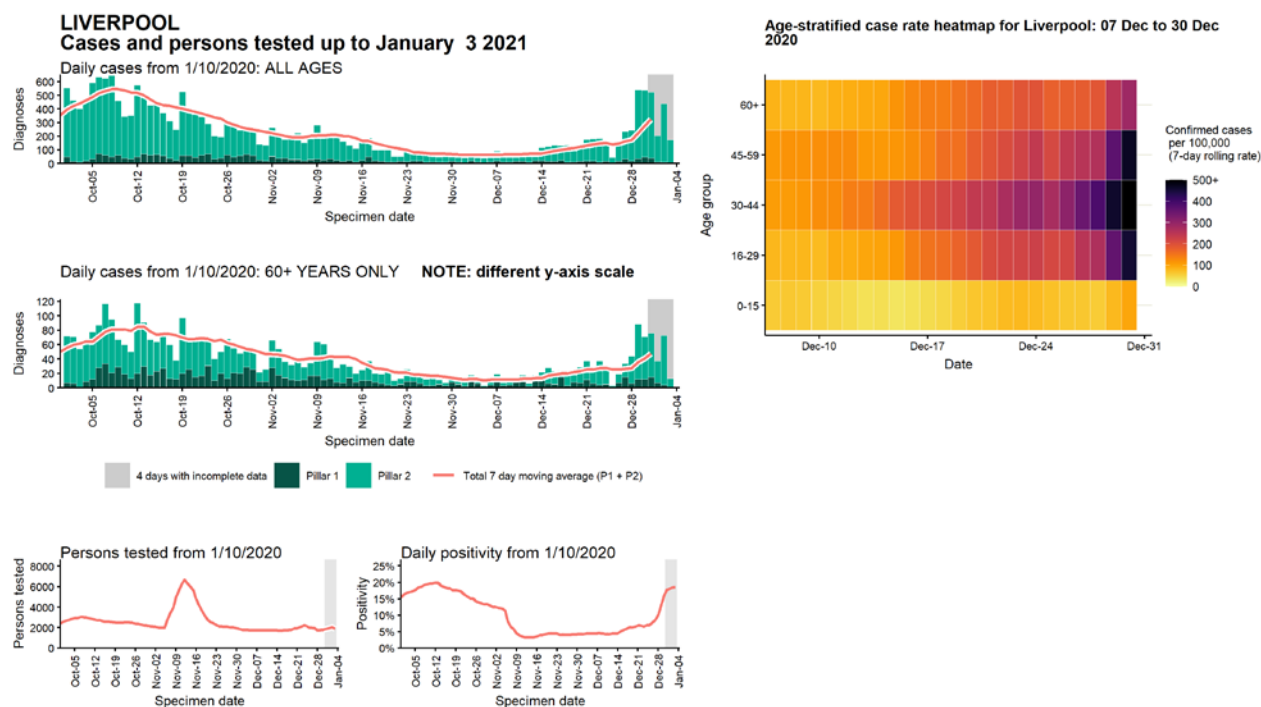


# Case numbers, testing numbers and positivity, Lancaster : 01 Sep to 03 Jan 2021



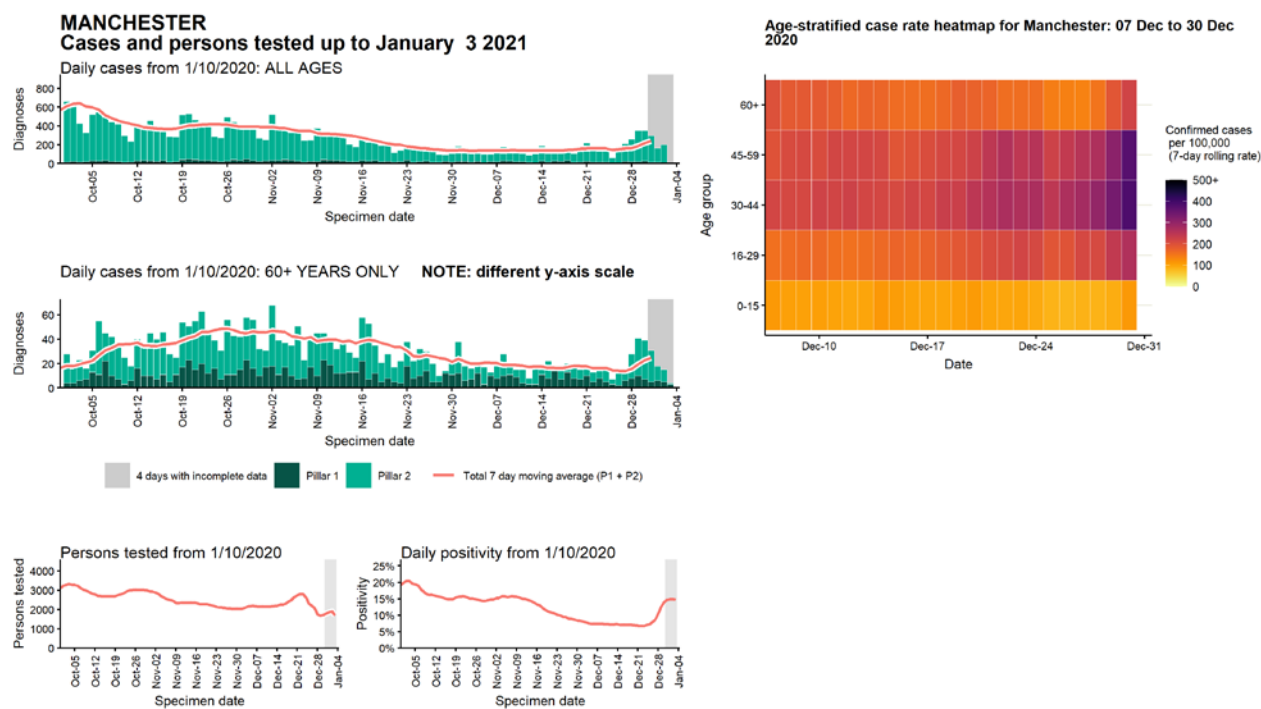
Data from SGSS. Produced by Outbreak Surveillance Team, PHE

Case numbers, testing numbers and positivity, Liverpool : 01 Sep to 03 Jan 2021



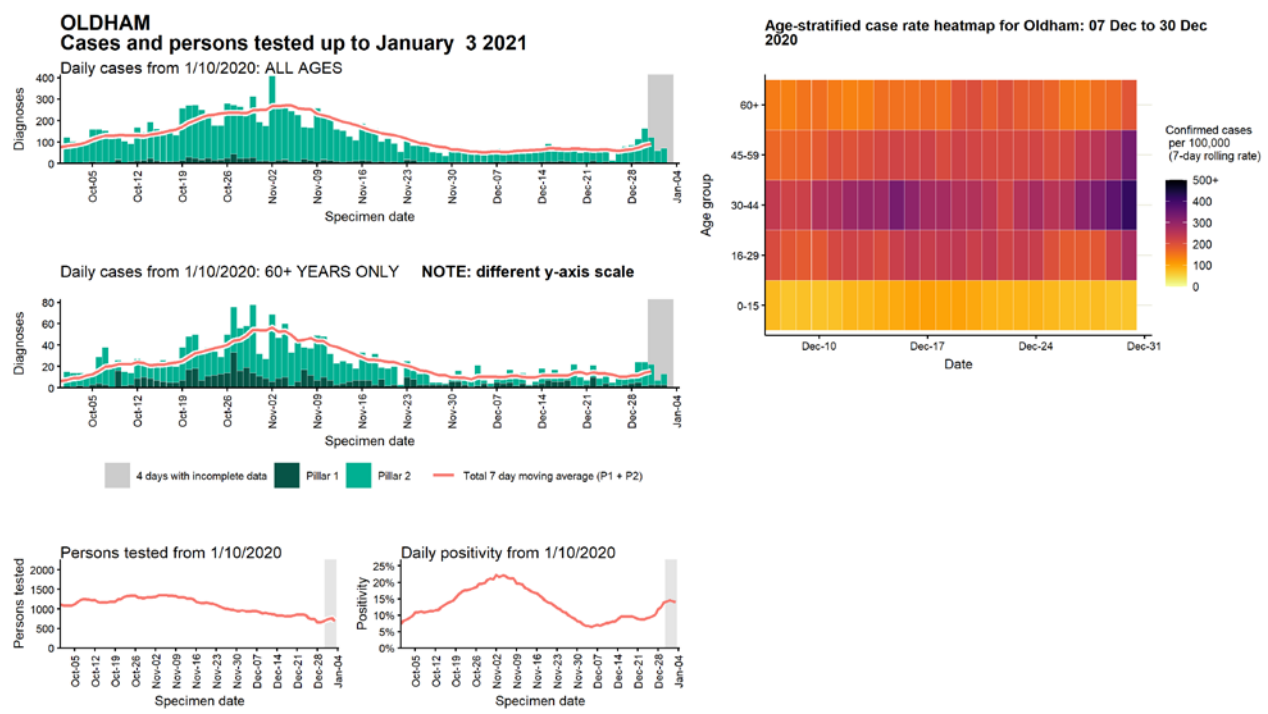
Data from SGSS. Produced by Outbreak Surveillance Team, PHE

# Case numbers, testing numbers and positivity, Manchester : 01 Sep to 03 Jan 2021

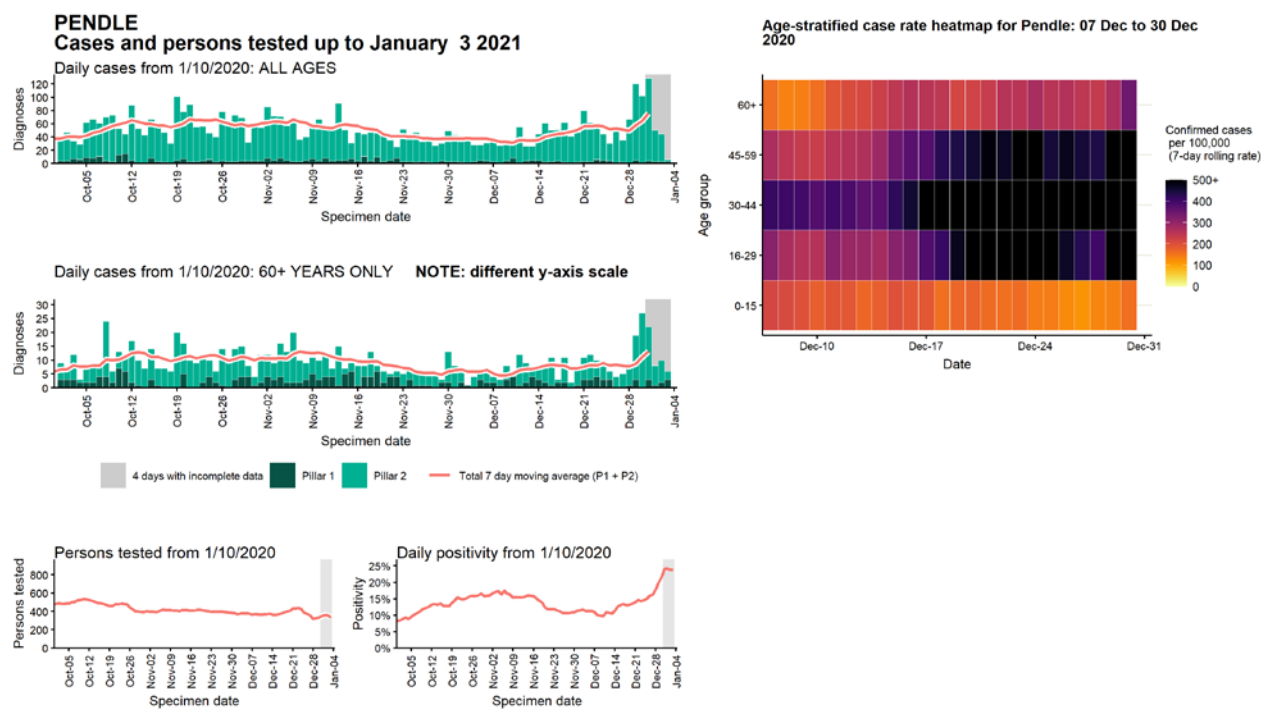


Data from SGSS. Produced by Outbreak Surveillance Team, PHE

# Case numbers, testing numbers and positivity, Oldham : 01 Sep to 03 Jan 2021

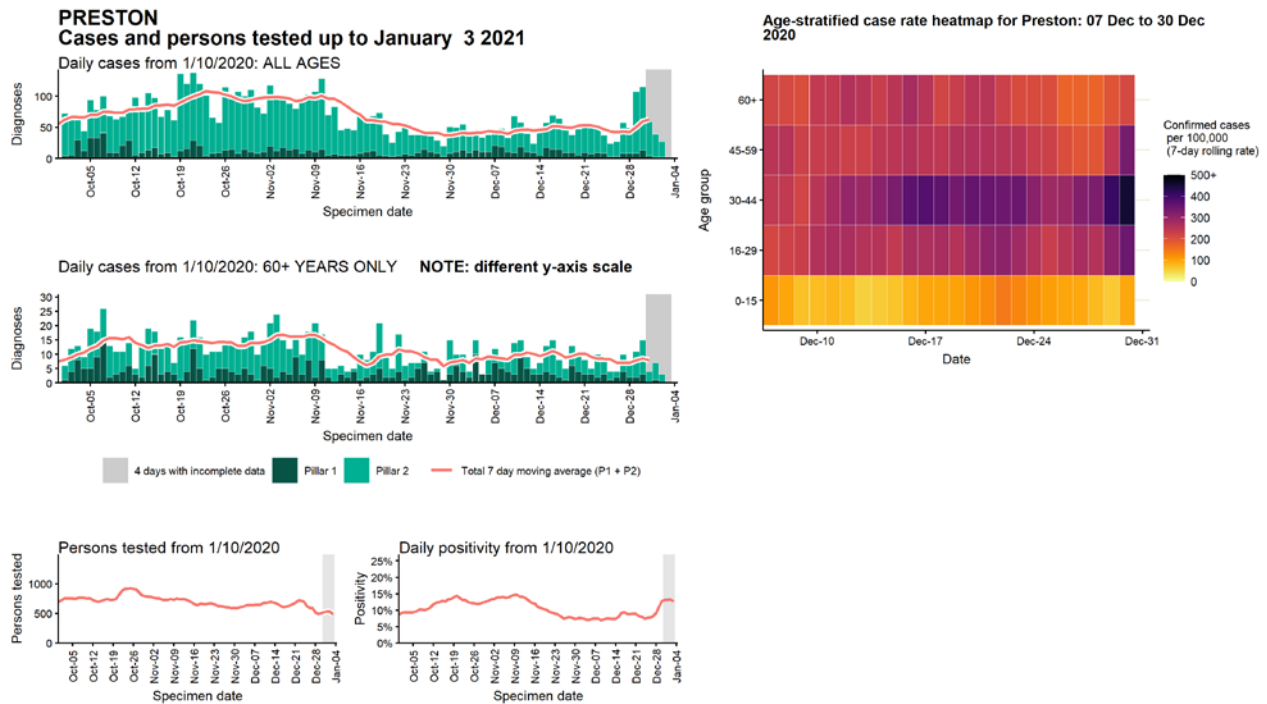


# Case numbers, testing numbers and positivity, Pendle : 01 Sep to 03 Jan 2021



Data from SGSS. Produced by Outbreak Surveillance Team, PHE

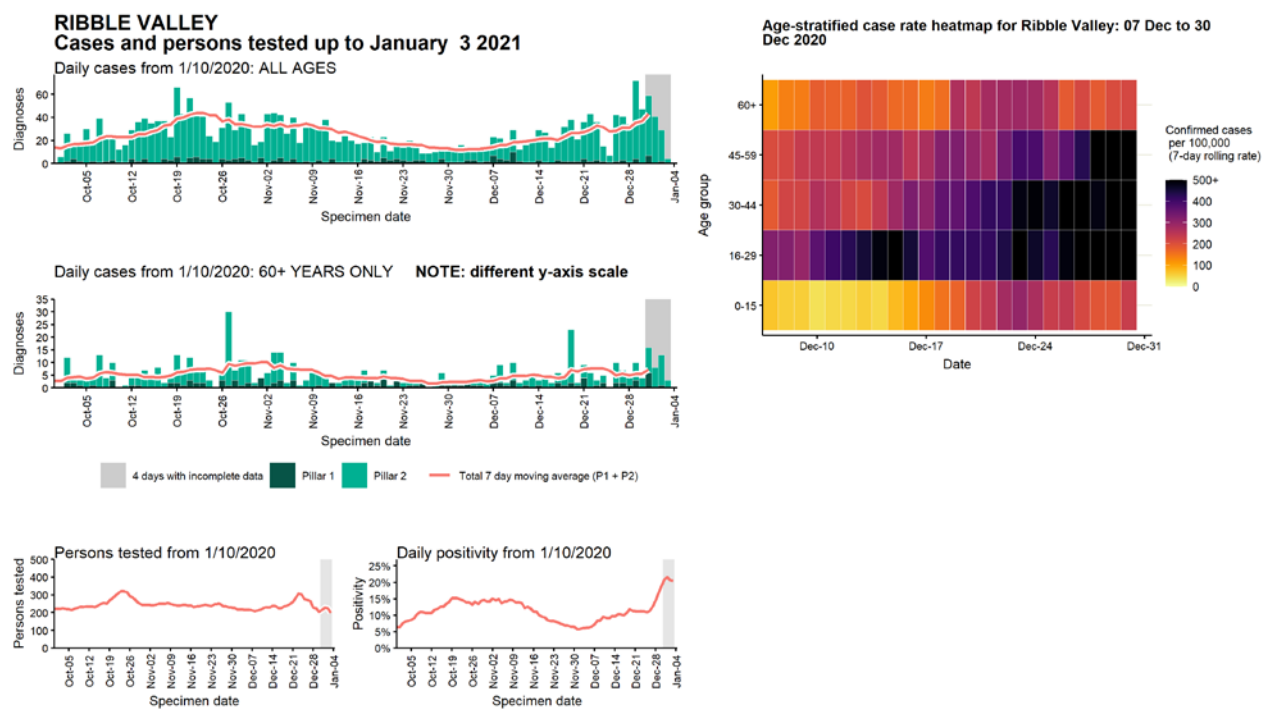
## Case numbers, testing numbers and positivity, Preston : 01 Sep to 03 Jan 2021



Data from SGSS. Produced by Outbreak Surveillance Team, PHE

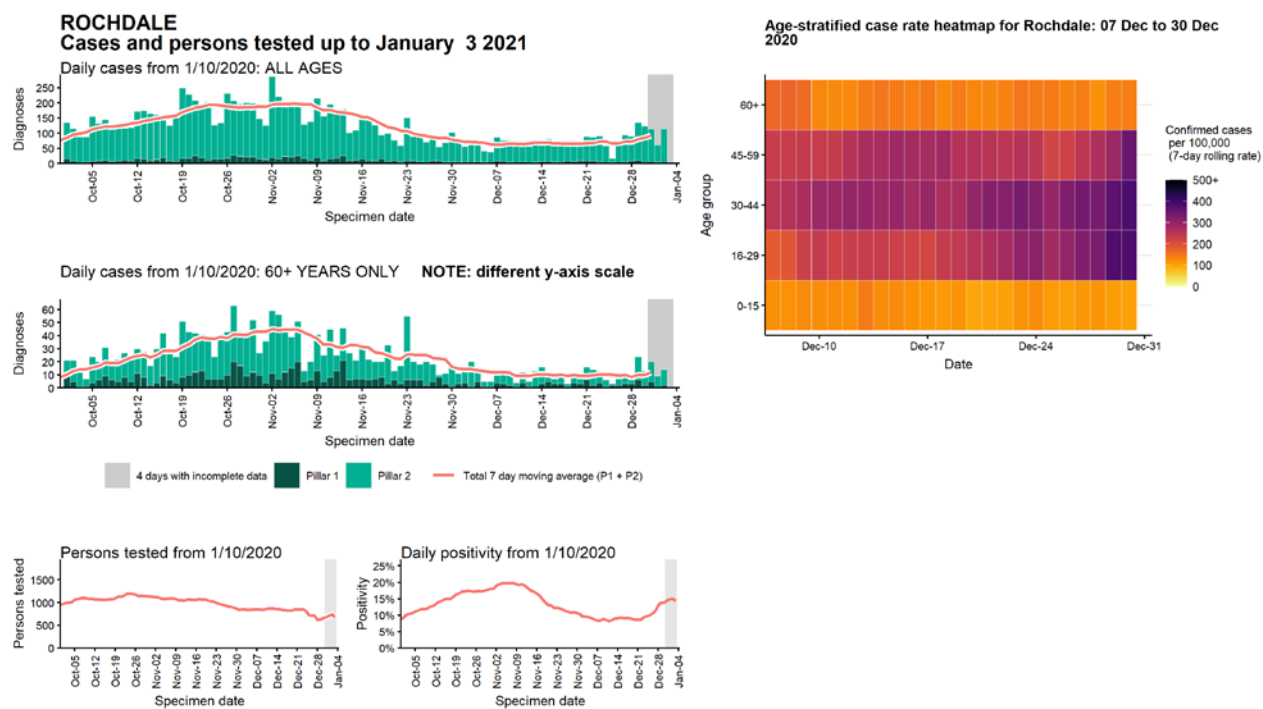


# Case numbers, testing numbers and positivity, Ribble Valley : 01 Sep to 03 Jan 2021



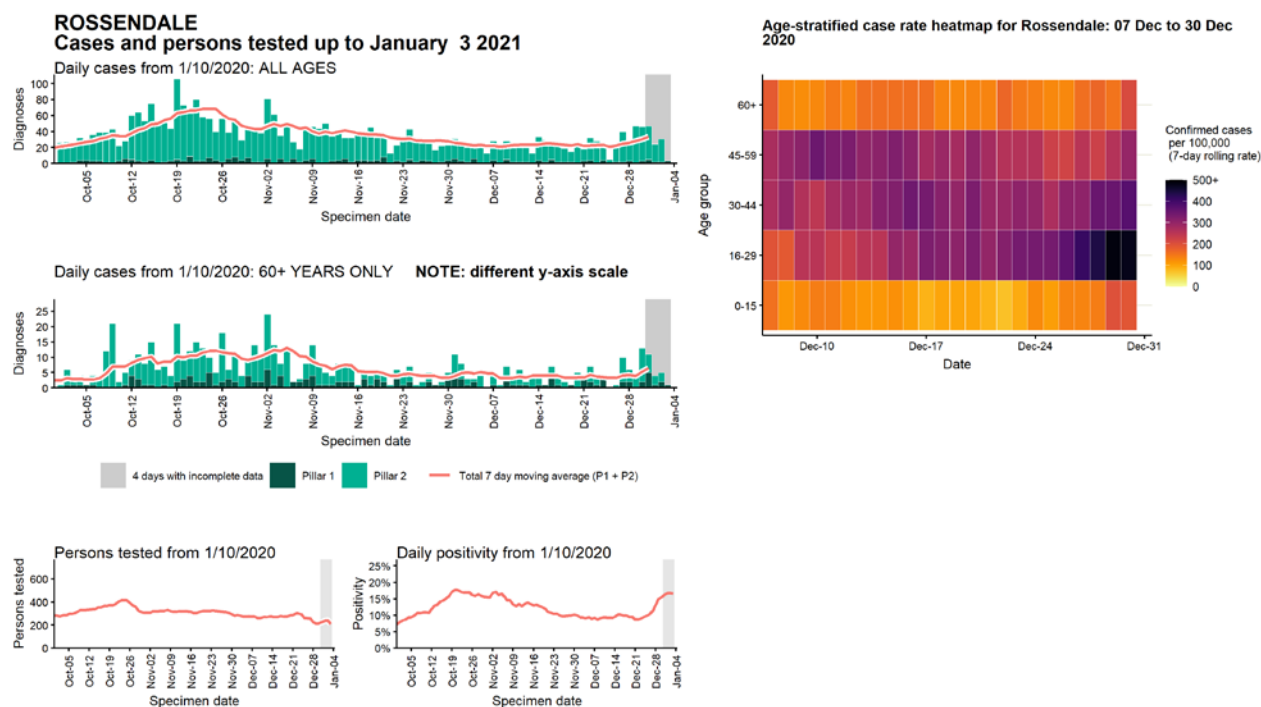
Data from SGSS. Produced by Outbreak Surveillance Team, PHE

# Case numbers, testing numbers and positivity, Rochdale : 01 Sep to 03 Jan 2021



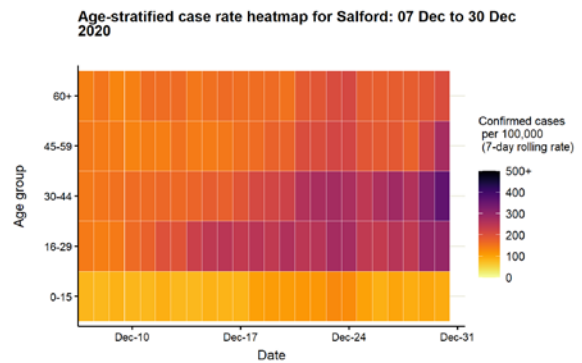
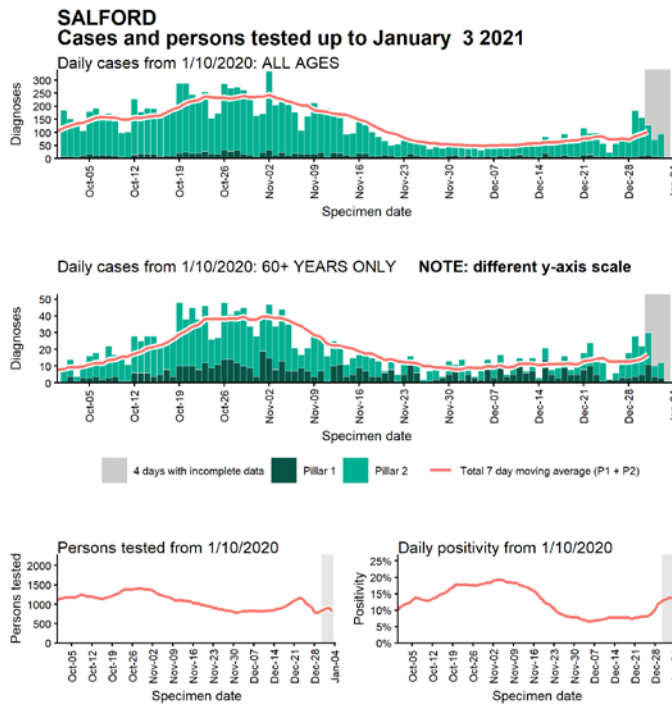
Data from SGSS. Produced by Outbreak Surveillance Team, PHE

# Case numbers, testing numbers and positivity, Rossendale : 01 Sep to 03 Jan 2021



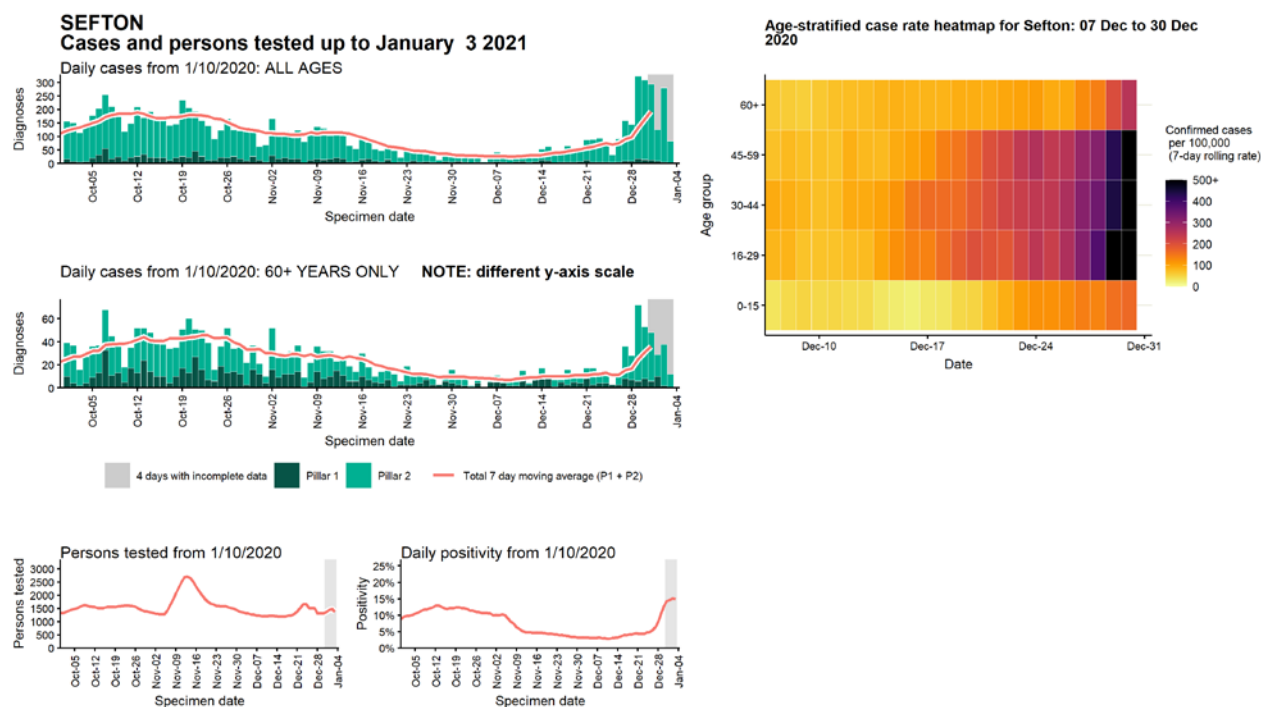
Data from SGSS. Produced by Outbreak Surveillance Team, PHE

## Case numbers, testing numbers and positivity, Salford : 01 Sep to 03 Jan 2021



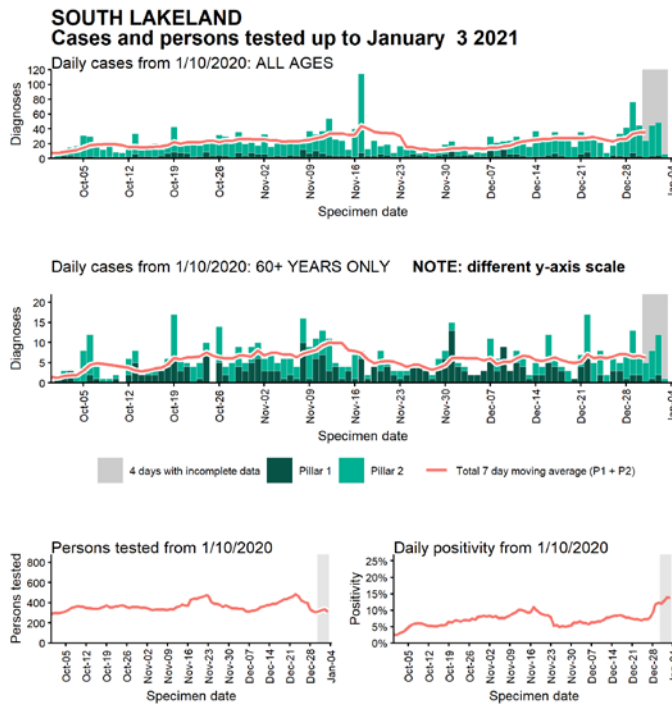
Data from SGSS. Produced by Outbreak Surveillance Team, PHE

# Case numbers, testing numbers and positivity, Sefton : 01 Sep to 03 Jan 2021

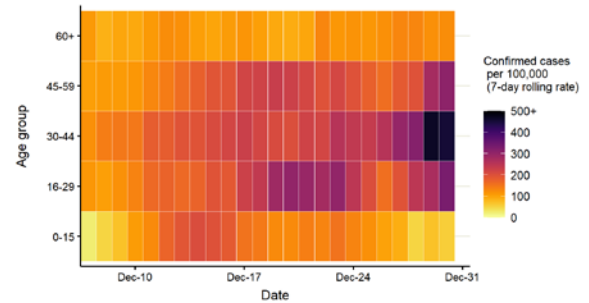


Data from SGSS. Produced by Outbreak Surveillance Team, PHE

## Case numbers, testing numbers and positivity, South Lakeland : 01 Sep to 03 Jan 2021

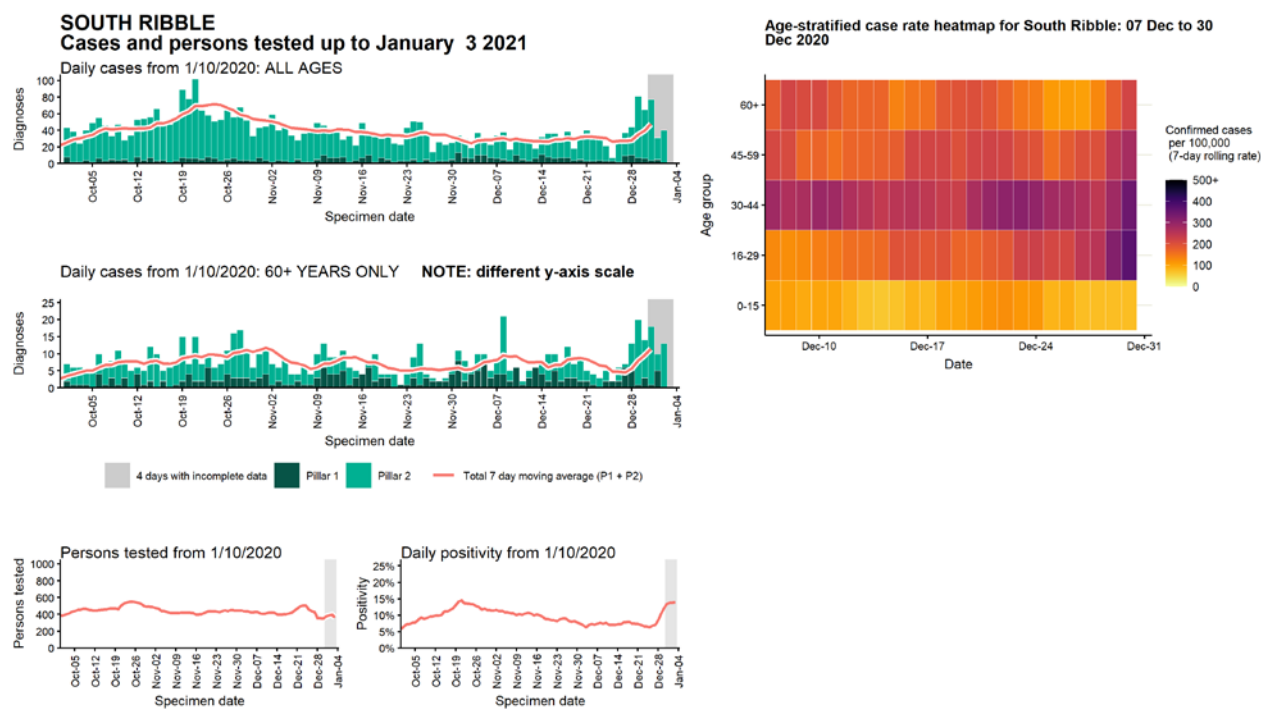


Age-stratified case rate heatmap for South Lakeland: 07 Dec to 30 Dec 2020



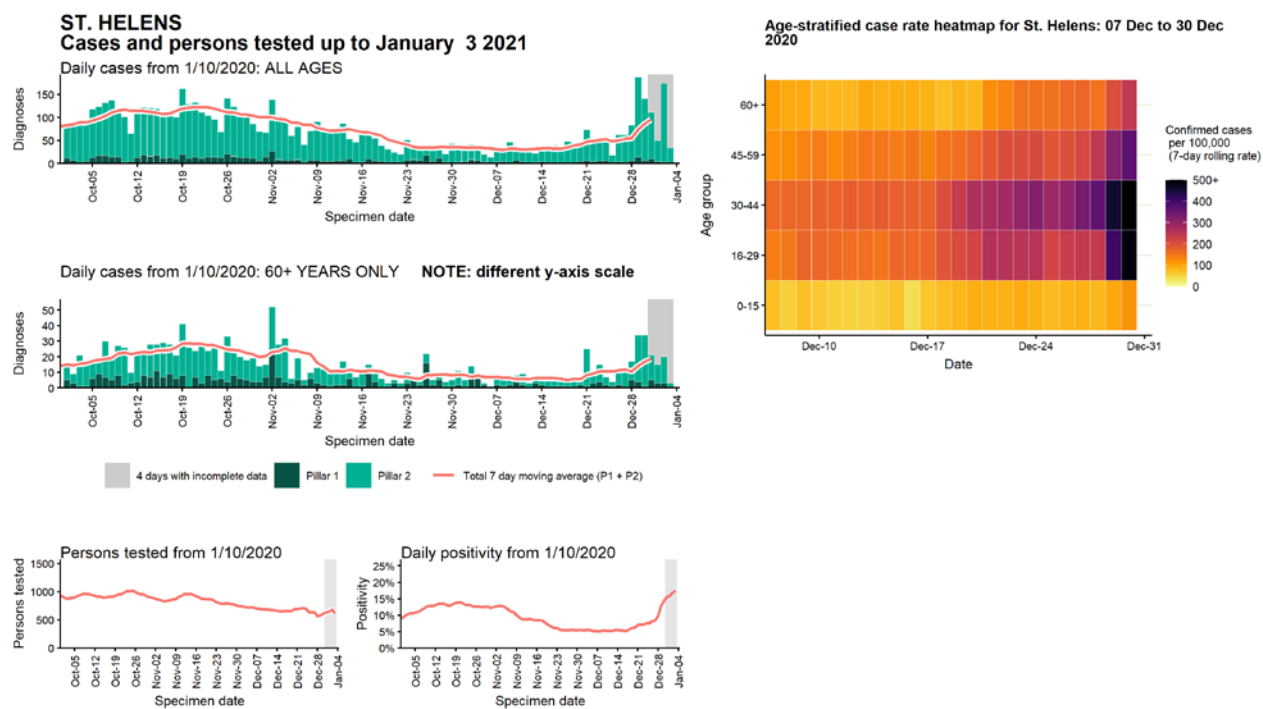
Data from SGSS. Produced by Outbreak Surveillance Team, PHE

# Case numbers, testing numbers and positivity, South Ribble : 01 Sep to 03 Jan 2021



Data from SGSS. Produced by Outbreak Surveillance Team, PHE

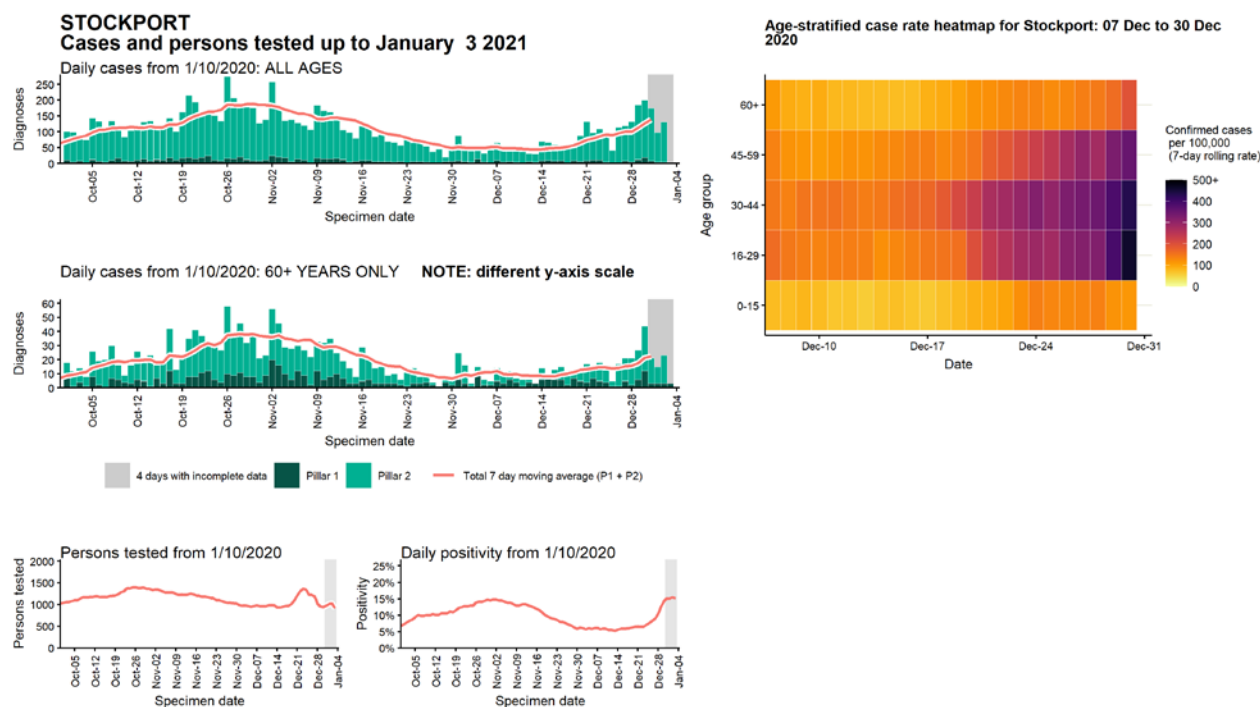
Case numbers, testing numbers and positivity, St. Helens : 01 Sep to 03 Jan 2021



Data from SGSS. Produced by Outbreak Surveillance Team, PHE

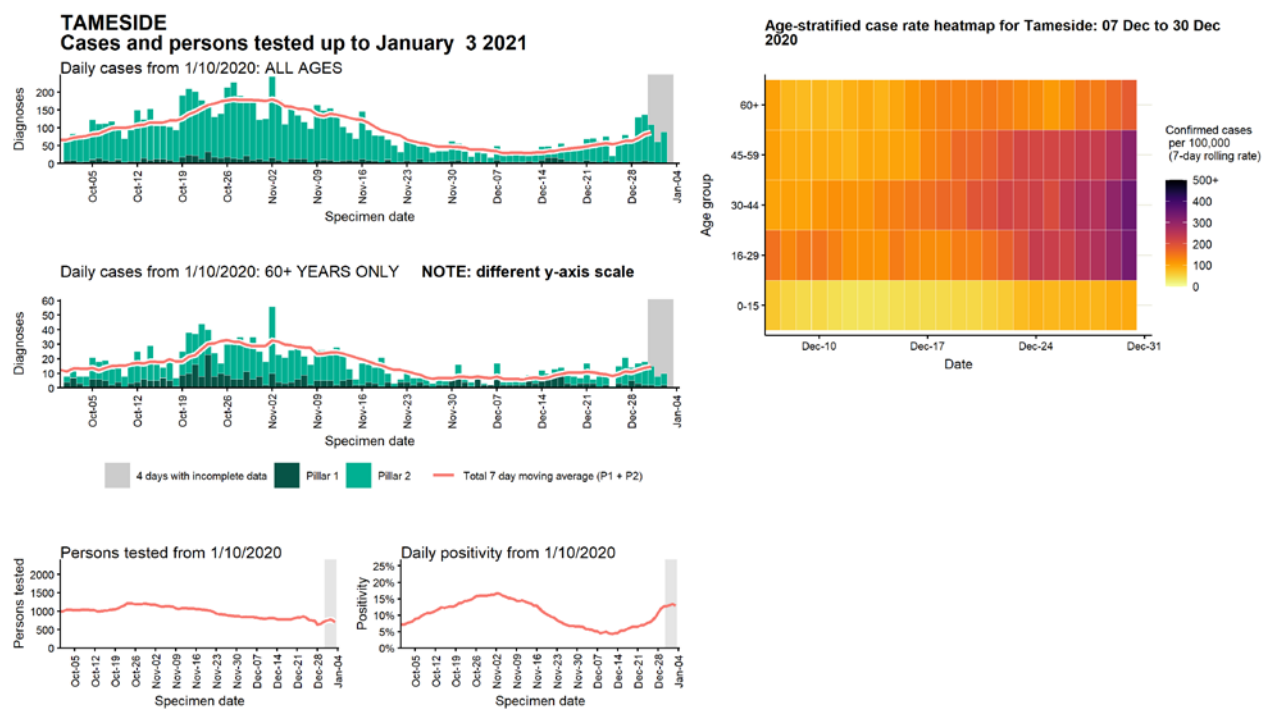


# Case numbers, testing numbers and positivity, Stockport : 01 Sep to 03 Jan 2021



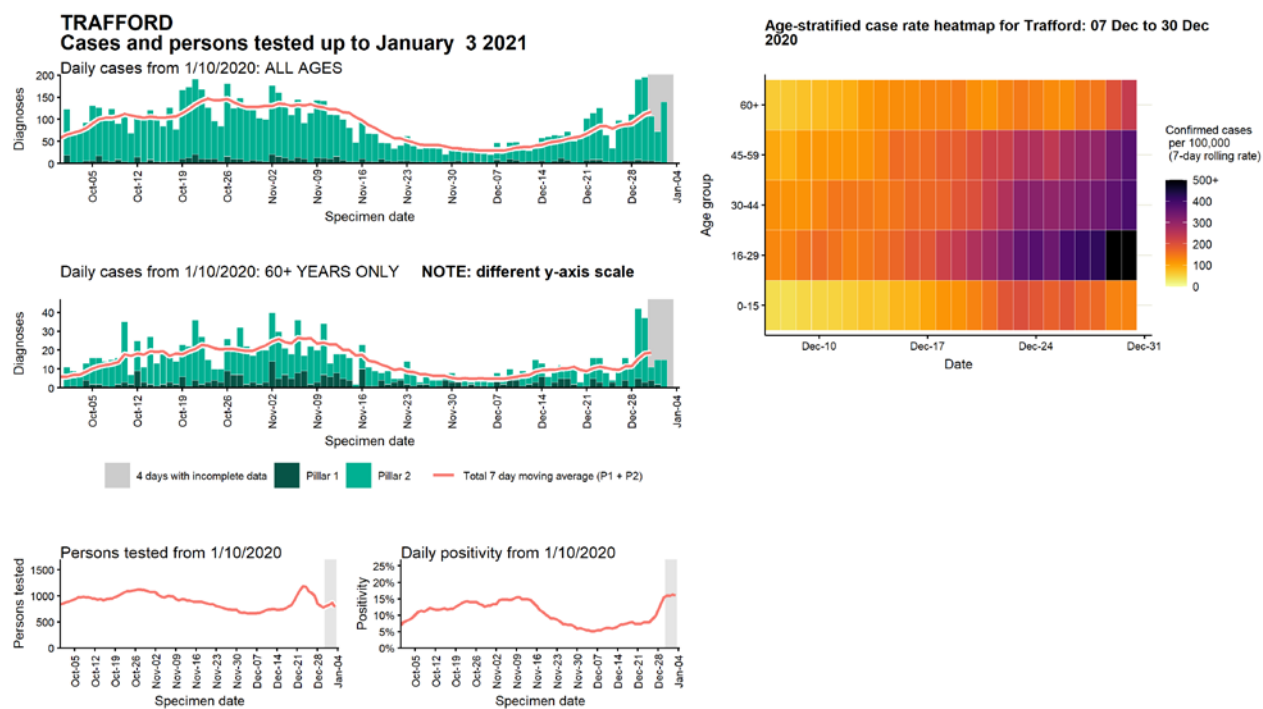
Data from SGSS. Produced by Outbreak Surveillance Team, PHE

# Case numbers, testing numbers and positivity, Tameside : 01 Sep to 03 Jan 2021



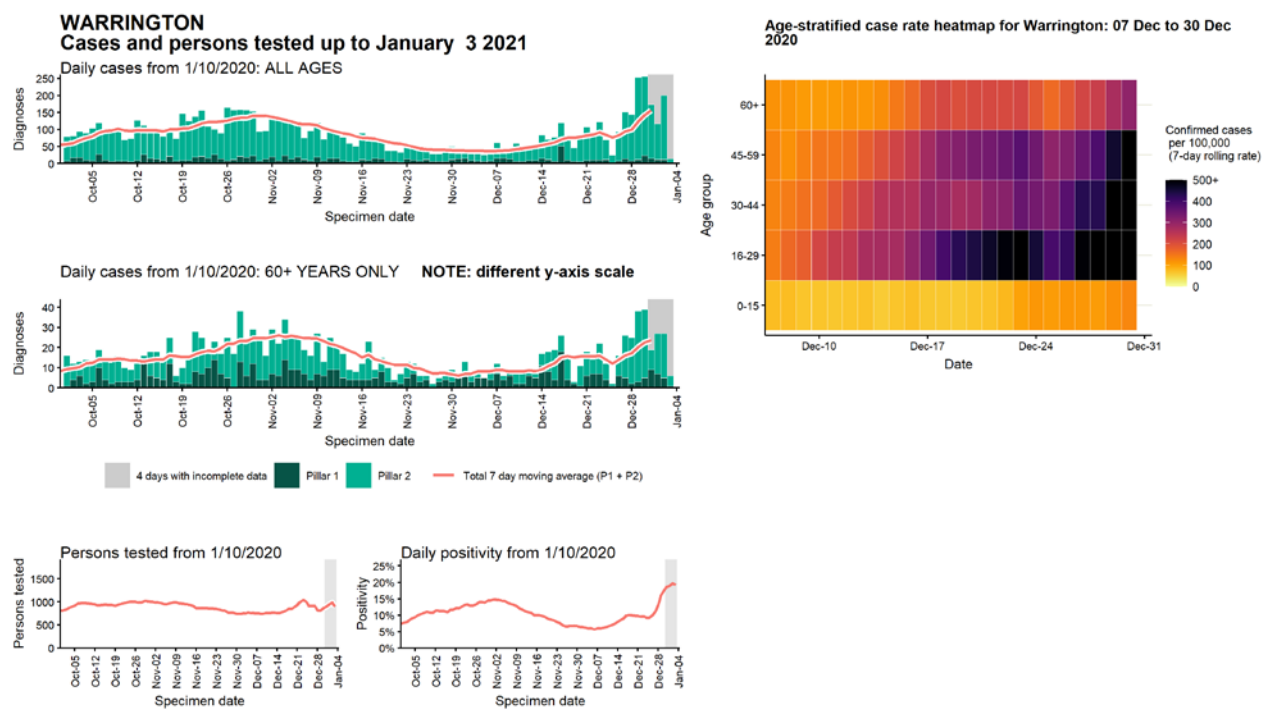
Data from SGSS. Produced by Outbreak Surveillance Team, PHE

Case numbers, testing numbers and positivity, Trafford : 01 Sep to 03 Jan 2021



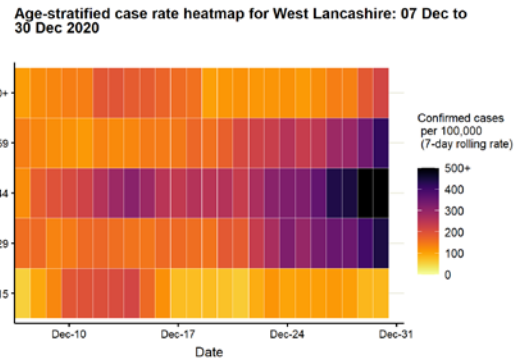
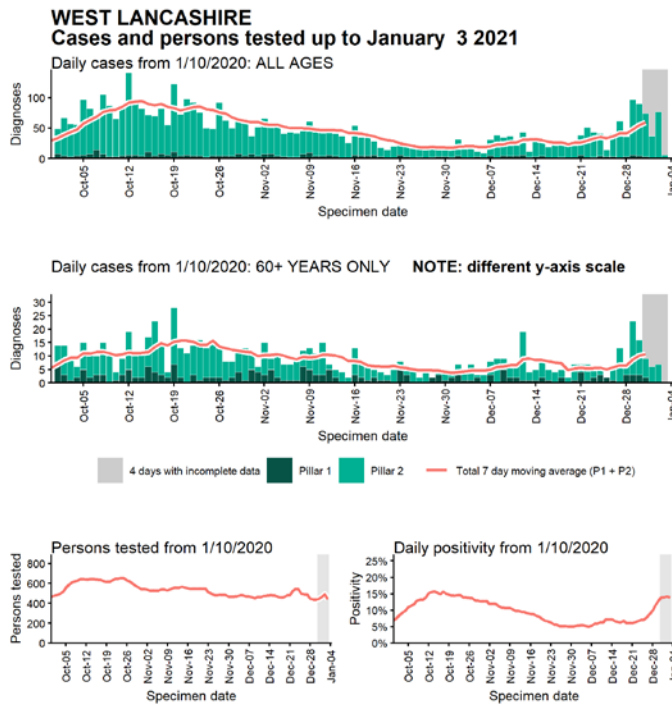
Data from SGSS. Produced by Outbreak Surveillance Team, PHE

# Case numbers, testing numbers and positivity, Warrington : 01 Sep to 03 Jan 2021



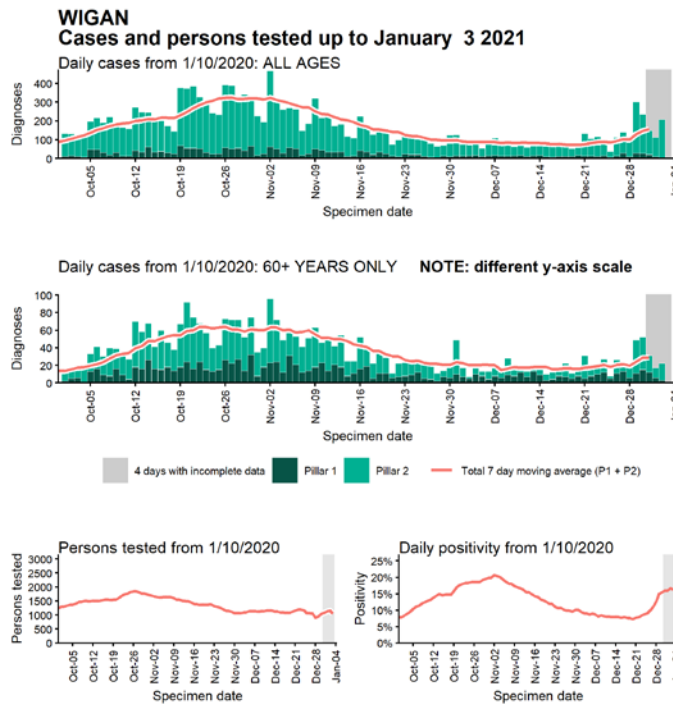
Data from SGSS. Produced by Outbreak Surveillance Team, PHE

## Case numbers, testing numbers and positivity, West Lancashire : 01 Sep to 03 Jan 2021

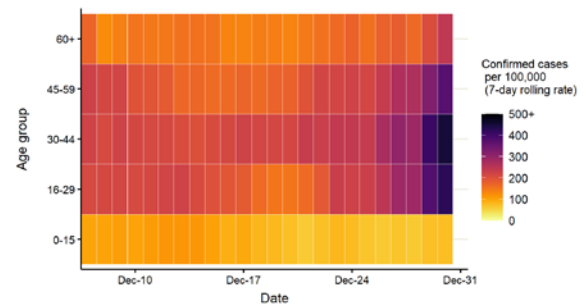


Data from SGSS. Produced by Outbreak Surveillance Team, PHE

## Case numbers, testing numbers and positivity, Wigan : 01 Sep to 03 Jan 2021

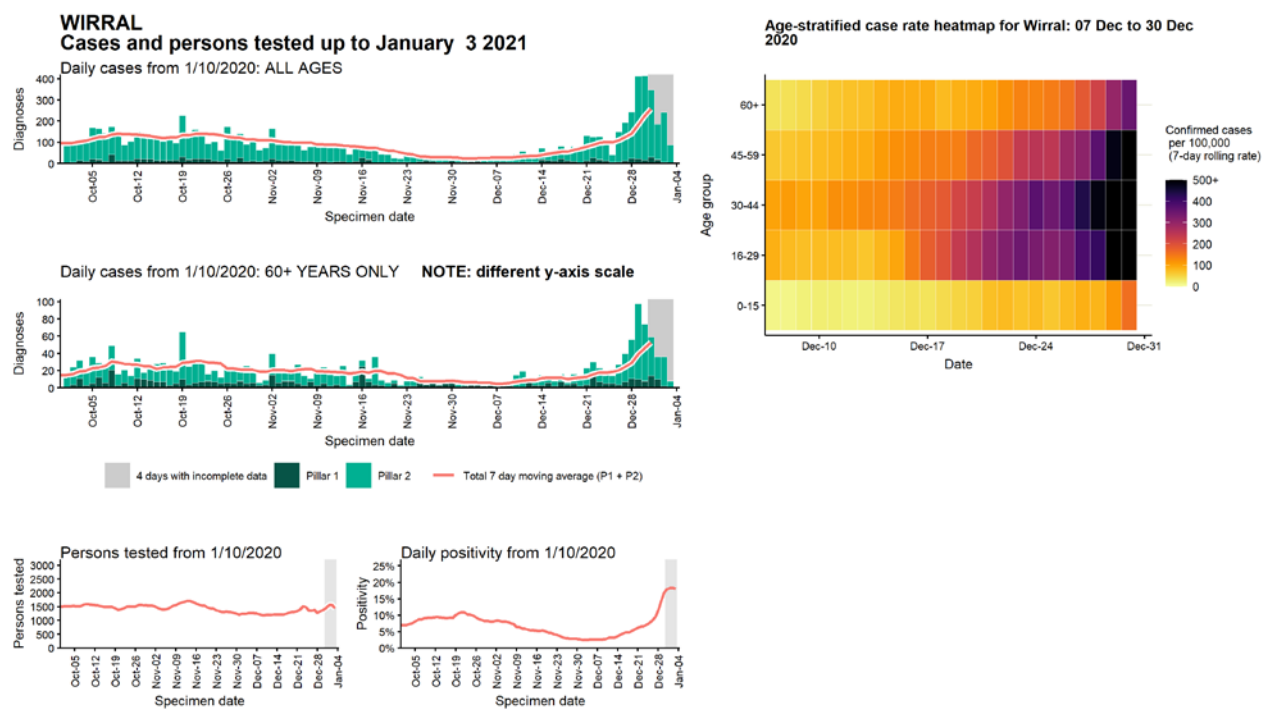


Age-stratified case rate heatmap for Wigan: 07 Dec to 30 Dec 2020



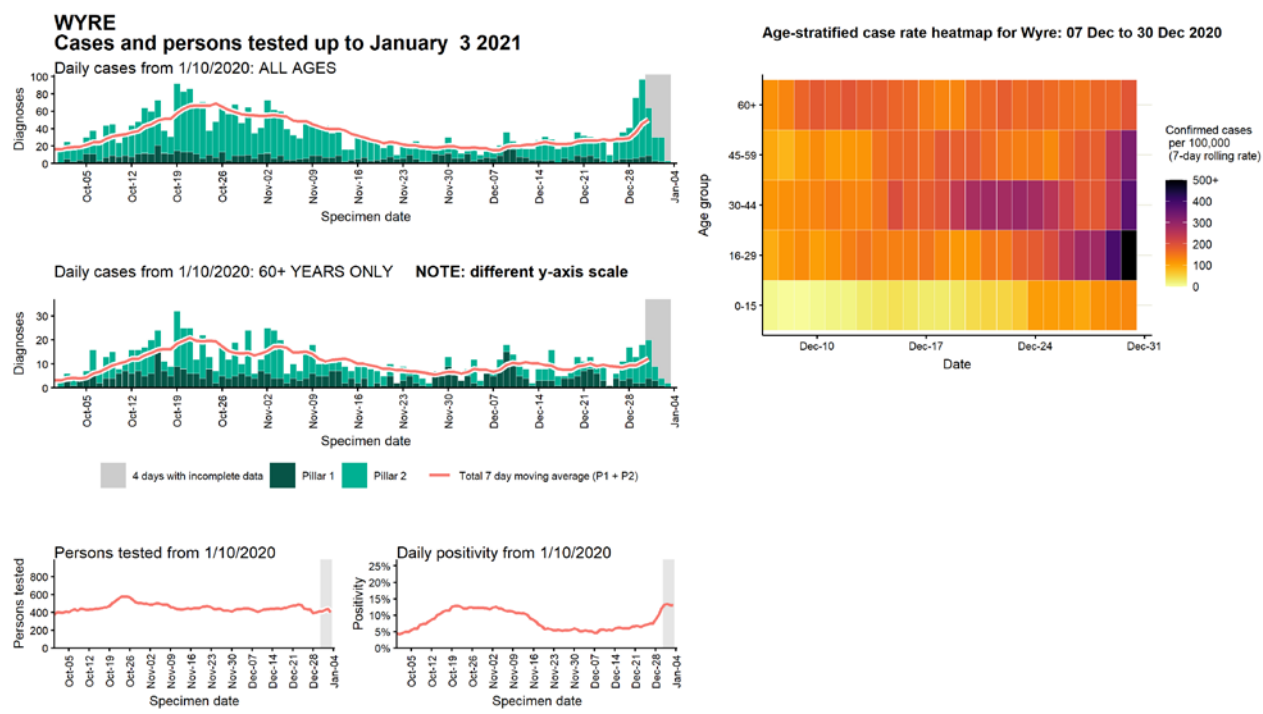
Data from SGSS. Produced by Outbreak Surveillance Team, PHE

# Case numbers, testing numbers and positivity, Wirral : 01 Sep to 03 Jan 2021



Data from SGSS. Produced by Outbreak Surveillance Team, PHE

# Case numbers, testing numbers and positivity, Wyre : 01 Sep to 03 Jan 2021



Data from SGSS. Produced by Outbreak Surveillance Team, PHE



© Crown copyright 2020

[www.gov.uk/dhsc](http://www.gov.uk/dhsc)

This publication is licensed under the terms of the Open Government Licence v3.0 except where otherwise stated. To view this licence, visit [nationalarchives.gov.uk/doc/open-government-licence/version/3](http://nationalarchives.gov.uk/doc/open-government-licence/version/3)

Where we have identified any third party copyright information you will need to obtain permission from the copyright holders concerned.

