



Department
of Health &
Social Care

London: lower tier local authority watchlist – epidemiological charts

Produced 04 January 2021

NOTES

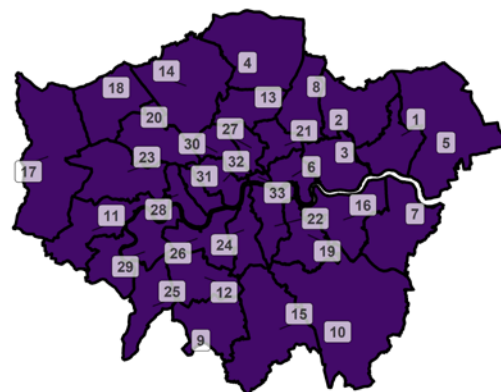
- This data is provided by Public Health England for the purpose of monitoring and supporting the management of Covid-19 infections in Local Authorities.
- The reports are produced using 2019 ONS population data
- If you would like to know the weekly trend for the case rate charts and persons tested chart please see Lower-tier local authority watchlist.

Weekly case rate per 100,000 population by local authority: 24 Dec to 30 Dec 2020

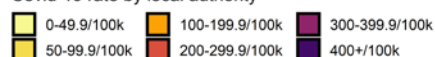
London
COVID-19 cases: 24 Dec to 30 Dec 2020
Weekly case rates per 100,000 population by local authority

Rank	Local Authority	Case Rate (per 100,000)	Number of cases (1 week)
1	Barking and Dagenham	1420.8	3025
2	Redbridge	1351.8	4126
3	Newham	1254.2	4429
4	Enfield	1189.4	3970
5	Havering	1180.5	3064
6	Tower Hamlets	1137.8	3695
7	Bexley	1137.0	2823
8	Waltham Forest	1063.2	2945
9	Sutton	1043.9	2154
10	Bromley	1041.4	3461
11	Hounslow	1018.0	2764
12	Merton	997.3	2060
13	Haringey	986.8	2651
14	Barnet	970.0	3840
15	Croydon	964.5	3730
16	Greenwich	962.3	2771

Rank	Local Authority	Case Rate (per 100,000)	Number of cases (1 week)
17	Hillingdon	953.2	2925
18	Harrow	934.1	2346
19	Leisham	894.6	2736
20	Brent	884.2	2916
21	Hackney	866.2	2435
22	Southwark	841.8	2684
23	Ealing	836.1	2858
24	Lambeth	803.0	2618
25	Kingston upon Thames	769.0	1365
26	Wandsworth	742.2	2447
27	Islington	721.3	1749
28	Hammersmith and Fulham	684.9	1268
29	Richmond upon Thames	642.4	1272
30	Camden	628.1	1696
31	Kensington and Chelsea	577.7	902
32	Westminster	547.6	1431
33	City of London	493.8	48



Covid-19 rate by local authority



Data from SGSS; Pillar 1 and 2 testing. Figure by Outbreak Surveillance Team, Public Health England.

Contains National Statistics data including 2019 population estimates Â© Crown copyright and database right 2020

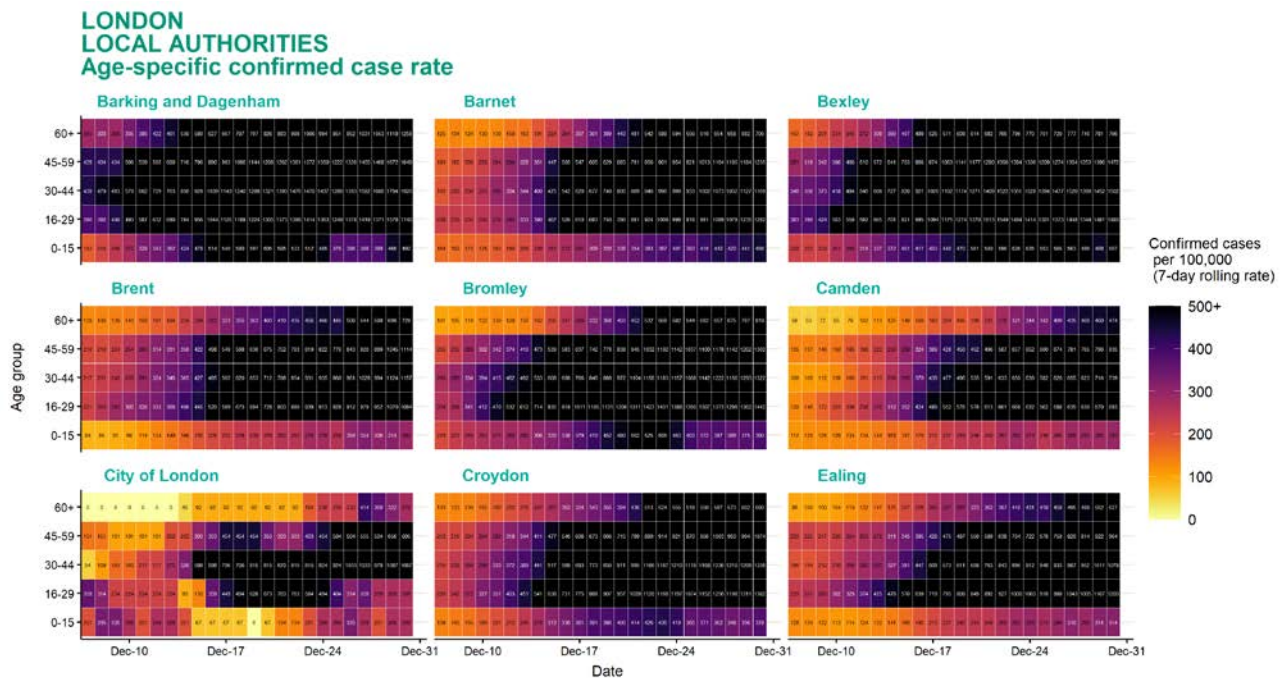
Age-stratified heatmap of weekly case rate for London : 07 Dec to 30 Dec 2020



Source: Case data from SGSS. Produced by Outbreak Surveillance Team, PHE

Contains National Statistics data Â© Crown copyright and database right 2020

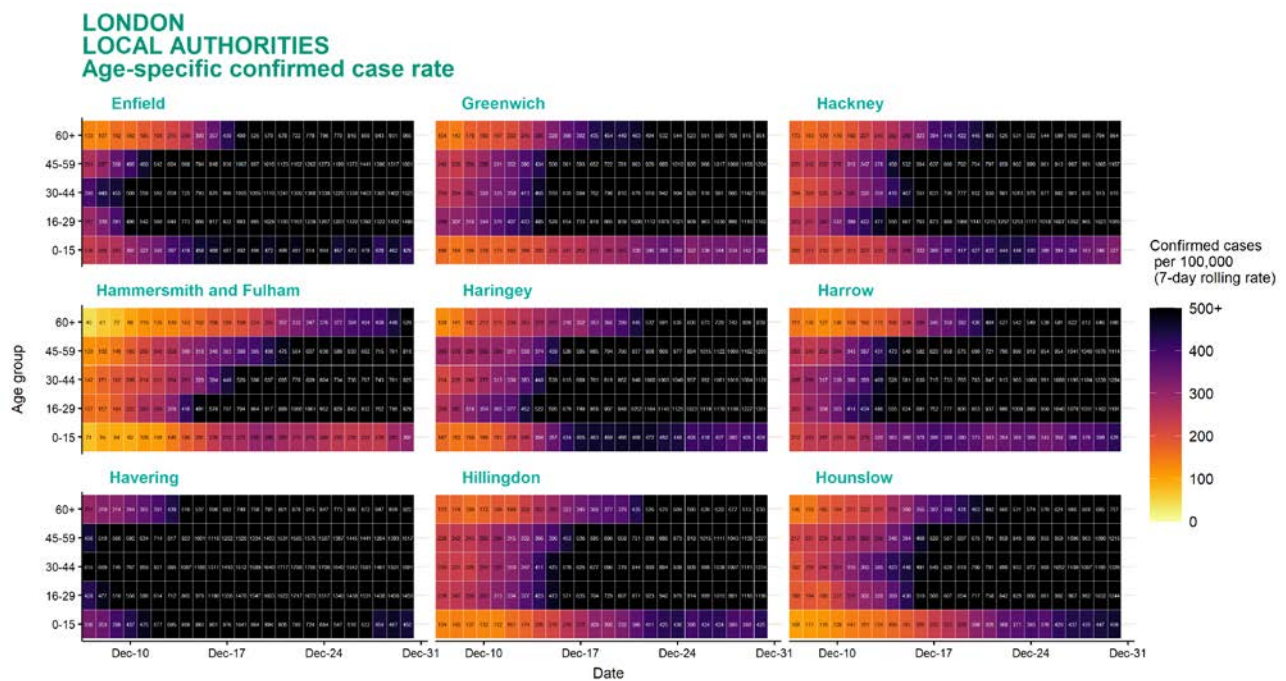
Age-stratified heatmap of weekly case rate by local authority for London : 07 Dec to 30 Dec 2020



Source: Case data from SGSS. Produced by Outbreak Surveillance Team, PHE

Contains National Statistics data Â© Crown copyright and database right 2020

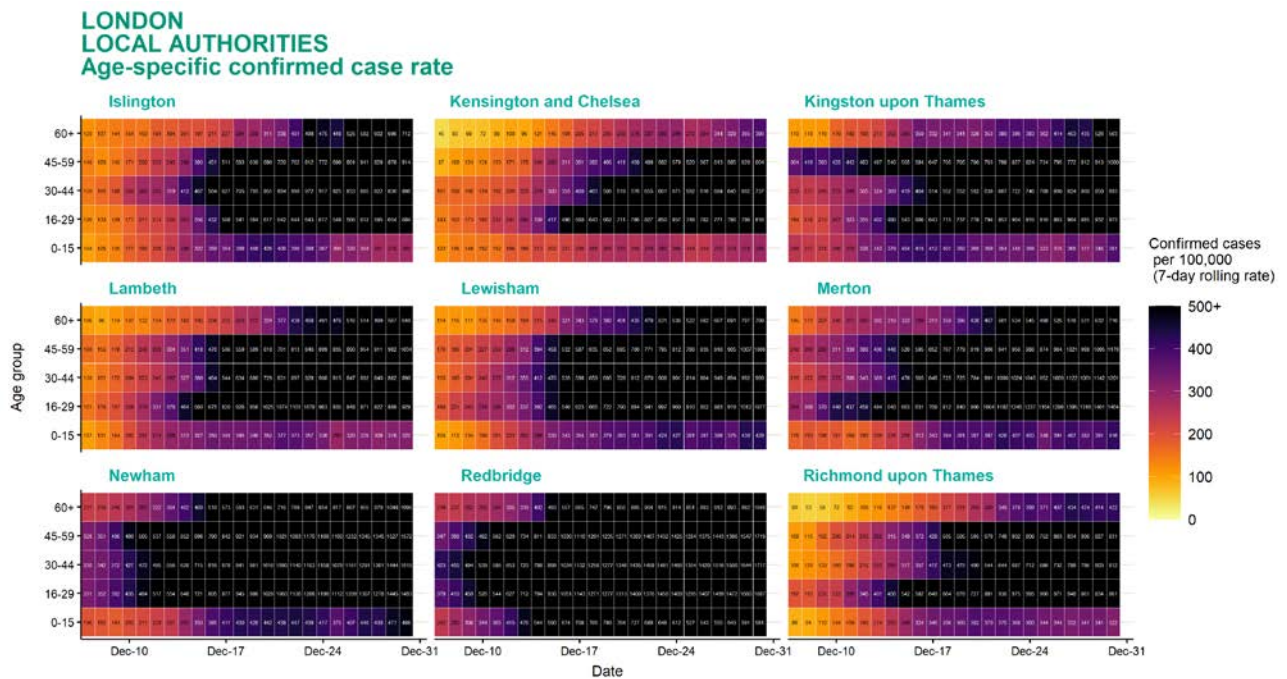
Age-stratified heatmap of weekly case rate by local authority for London : 07 Dec to 30 Dec 2020



Source: Case data from SGSS. Produced by Outbreak Surveillance Team, PHE

Contains National Statistics data Â© Crown copyright and database right 2020

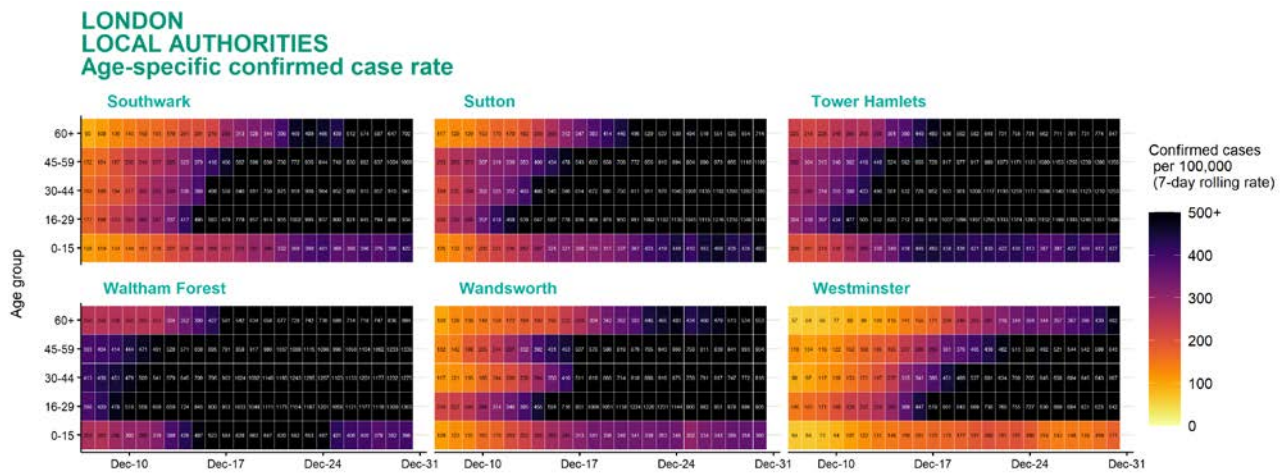
Age-stratified heatmap of weekly case rate by local authority for London : 07 Dec to 30 Dec 2020



Source: Case data from SGSS. Produced by Outbreak Surveillance Team, PHE

Contains National Statistics data Â© Crown copyright and database right 2020

Age-stratified heatmap of weekly case rate by local authority for London : 07 Dec to 30 Dec 2020

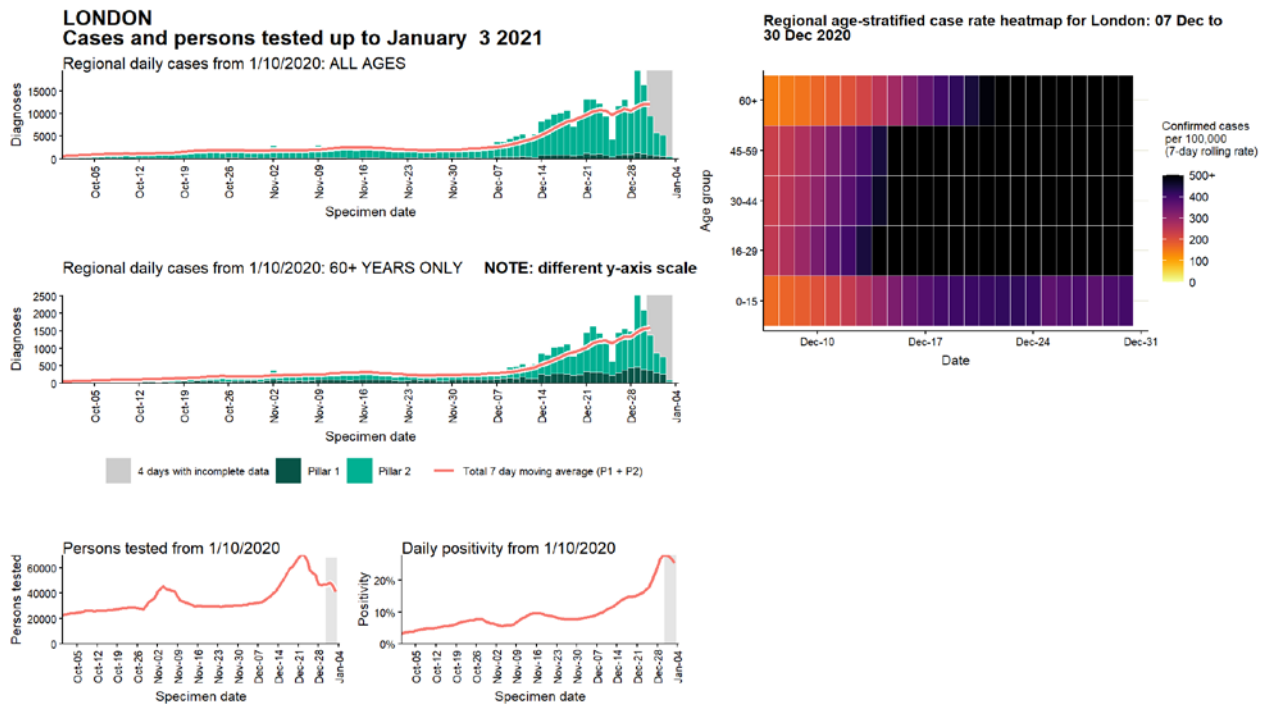


Date

Source: Case data from SGSS. Produced by Outbreak Surveillance Team, PHE

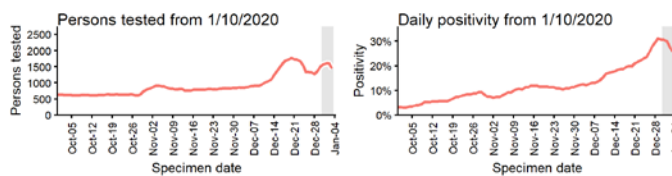
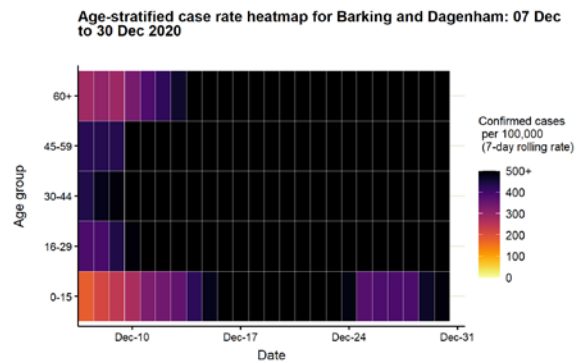
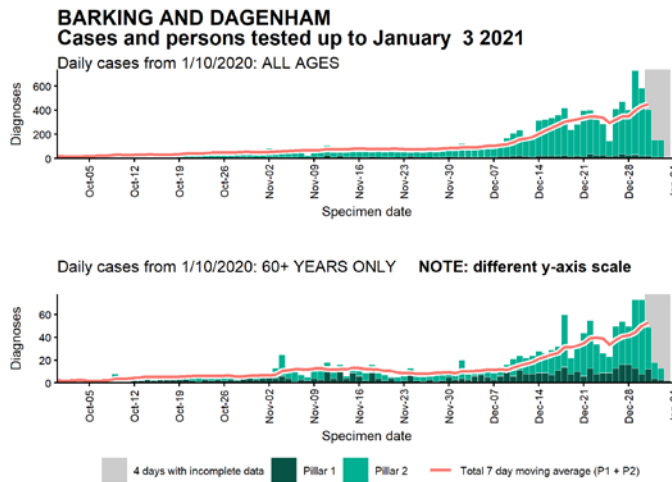
Contains National Statistics data Â© Crown copyright and database right 2020

Regional case numbers, testing numbers and positivity, London : 01 Sep to 03 Jan 2021



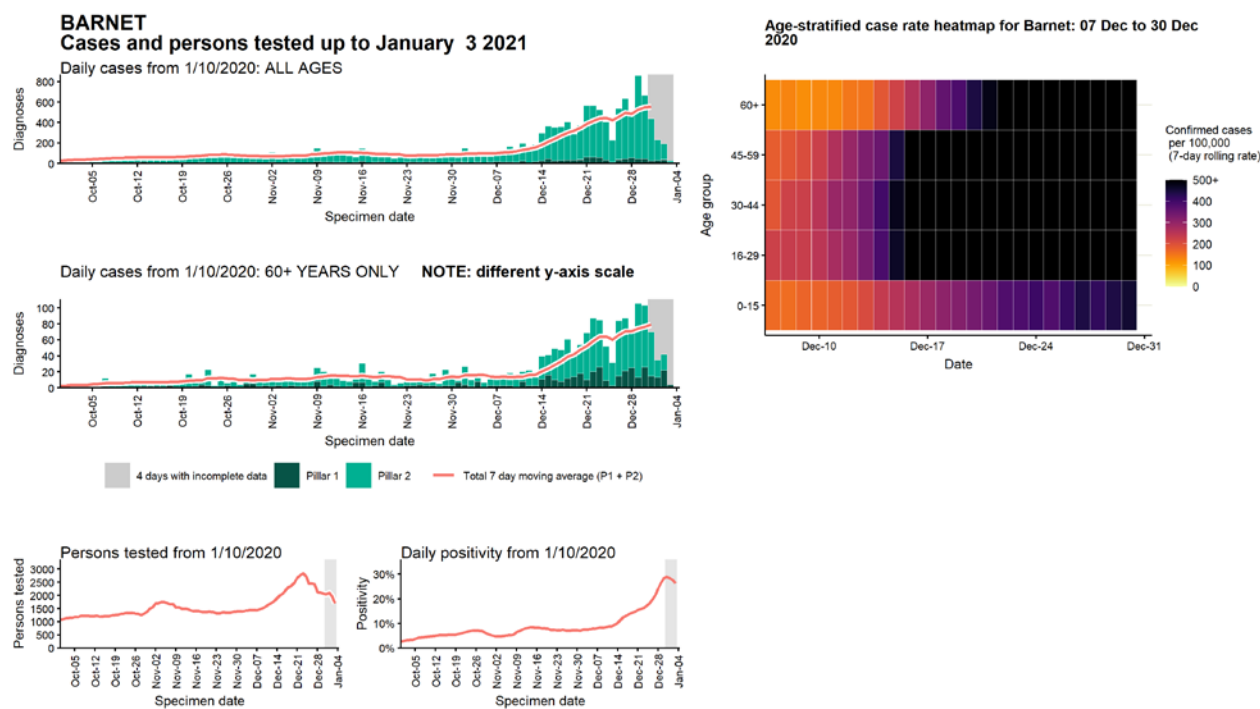
Data from SGSS. Produced by Outbreak Surveillance Team, PHE

Case numbers, testing numbers and positivity, Barking and Dagenham : 01 Sep to 03 Jan 2021



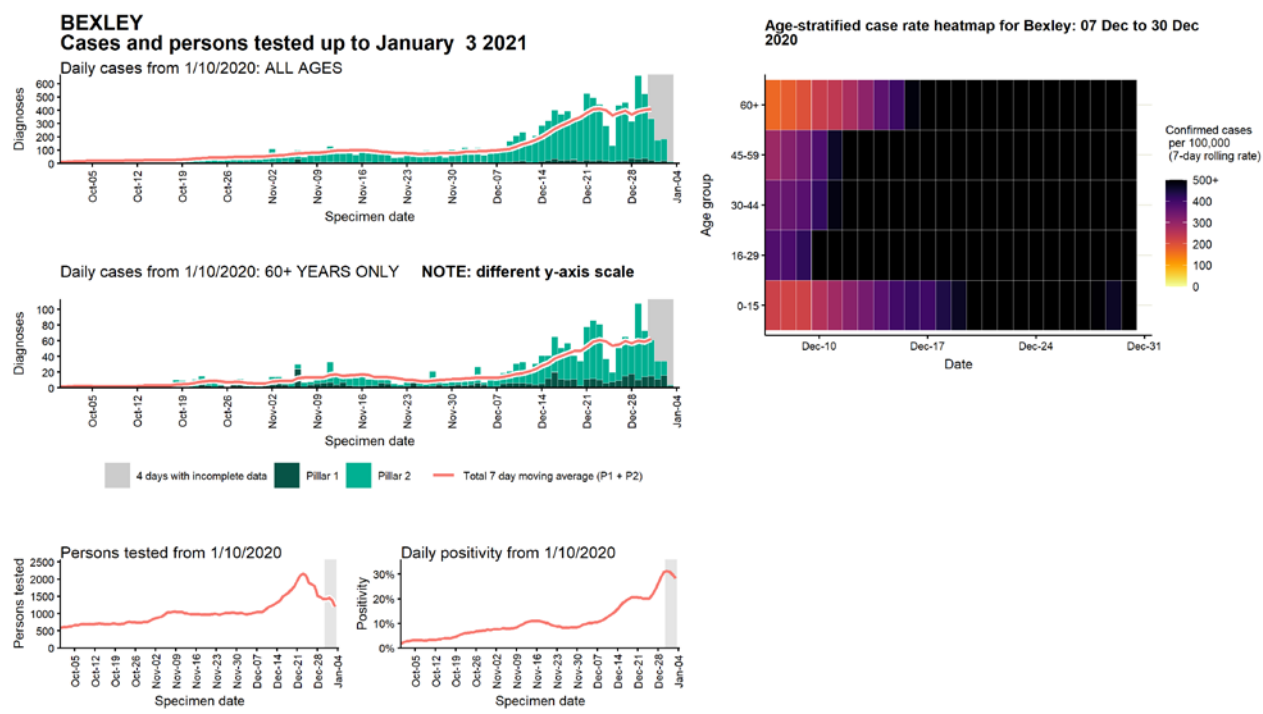
Data from SGSS. Produced by Outbreak Surveillance Team, PHE

Case numbers, testing numbers and positivity, Barnet : 01 Sep to 03 Jan 2021



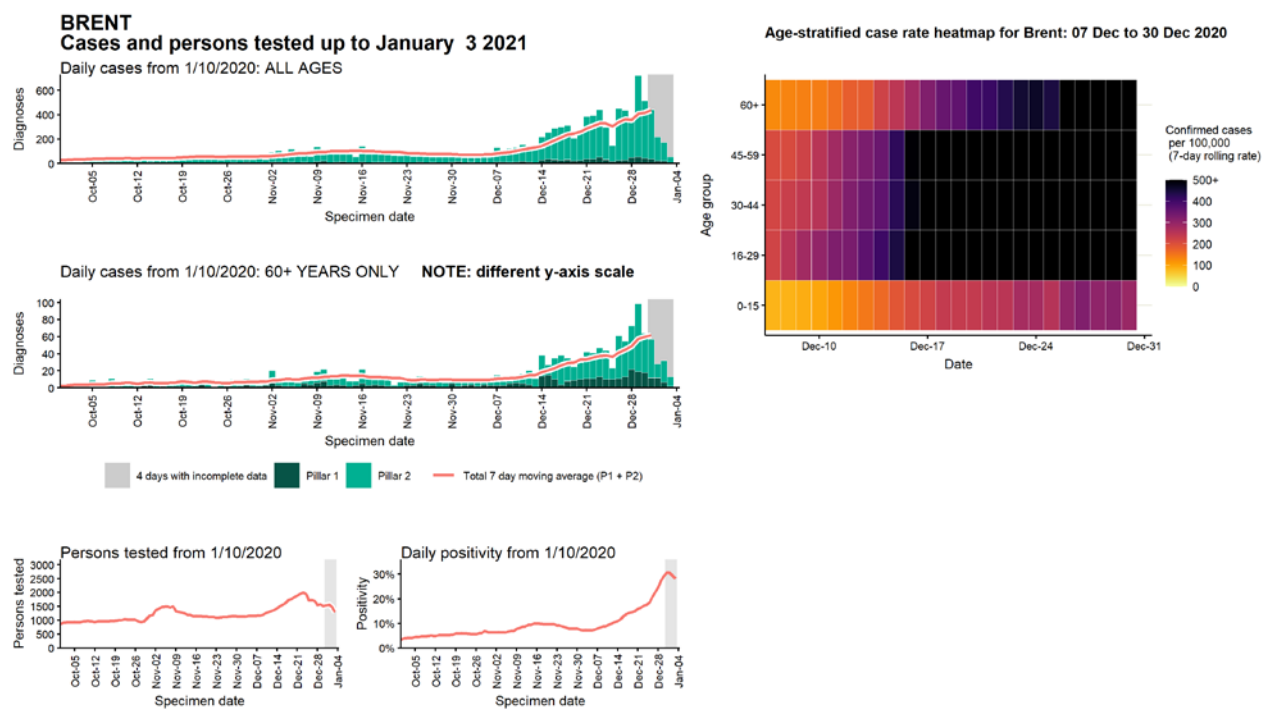
Data from SGSS. Produced by Outbreak Surveillance Team, PHE

Case numbers, testing numbers and positivity, Bexley : 01 Sep to 03 Jan 2021



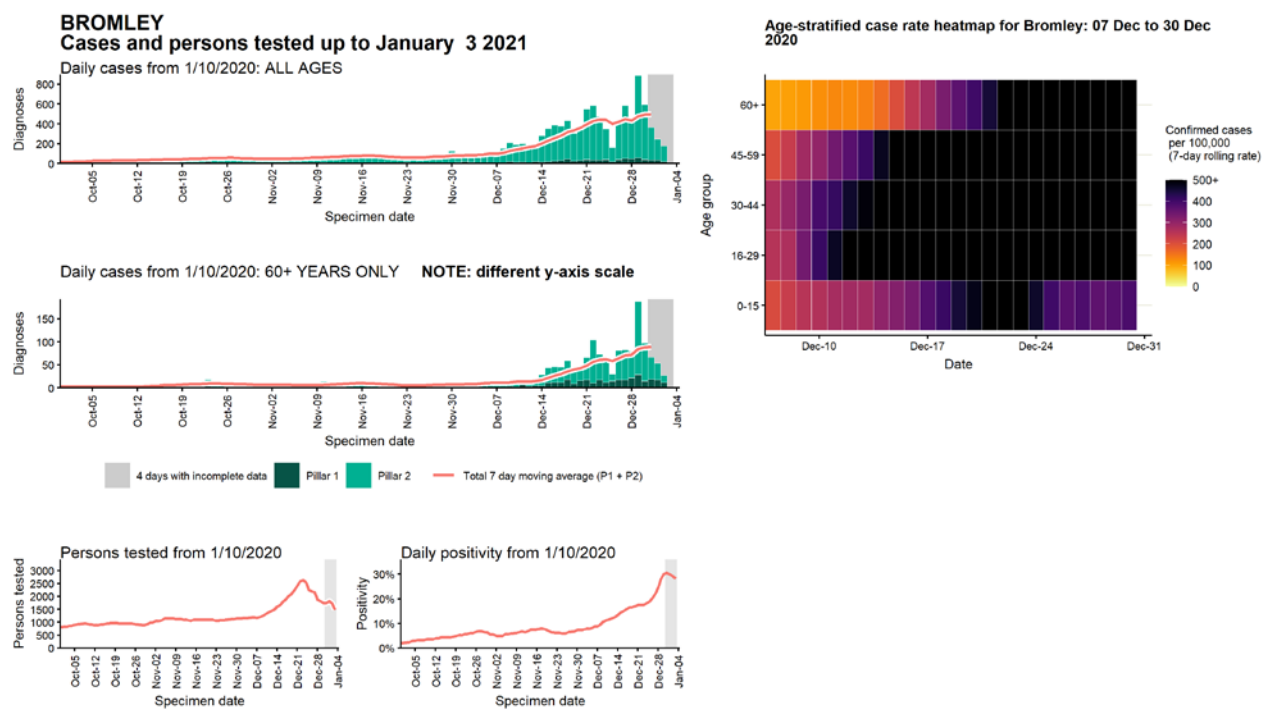
Data from SGSS. Produced by Outbreak Surveillance Team, PHE

Case numbers, testing numbers and positivity, Brent : 01 Sep to 03 Jan 2021



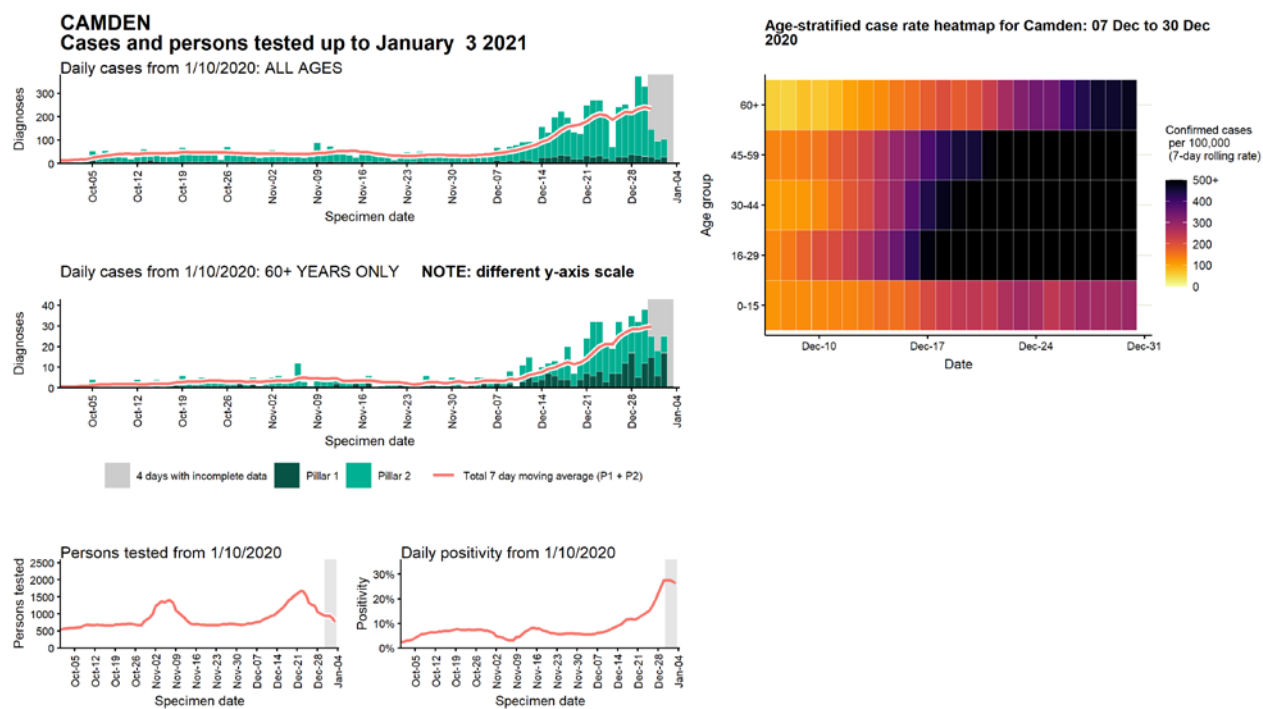
Data from SGSS. Produced by Outbreak Surveillance Team, PHE

Case numbers, testing numbers and positivity, Bromley : 01 Sep to 03 Jan 2021



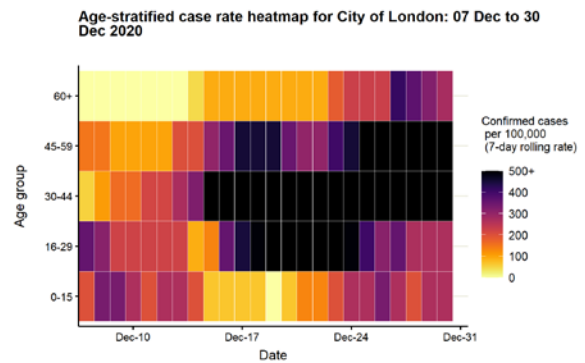
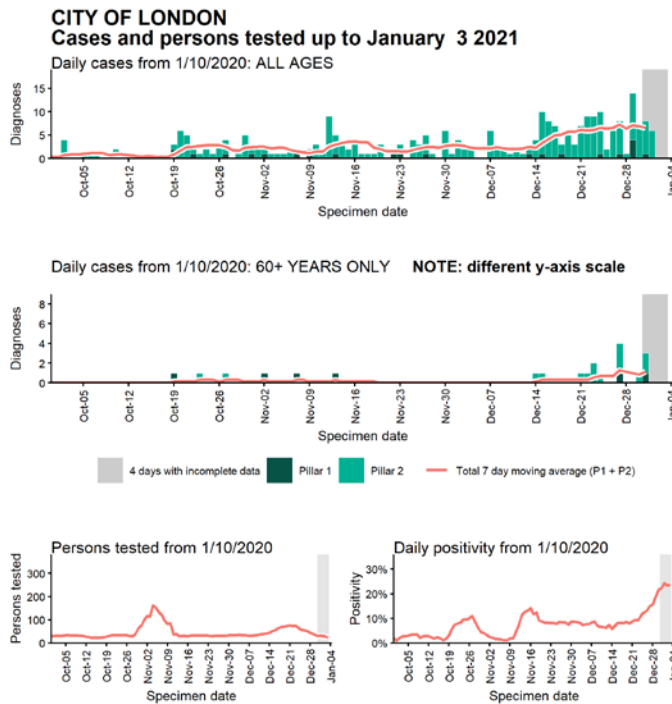
Data from SGSS. Produced by Outbreak Surveillance Team, PHE

Case numbers, testing numbers and positivity, Camden : 01 Sep to 03 Jan 2021



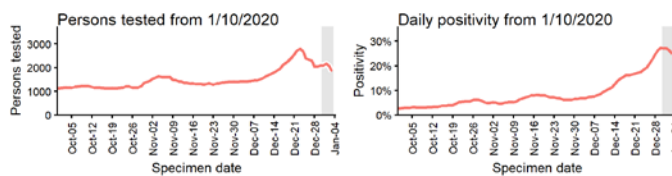
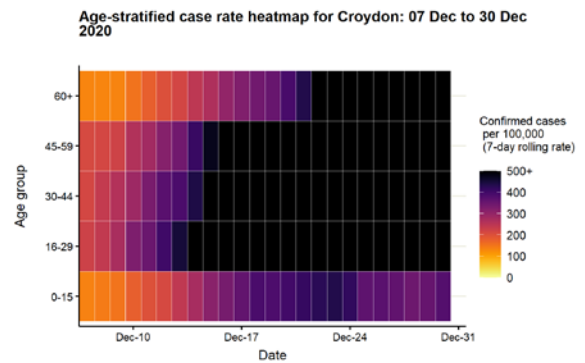
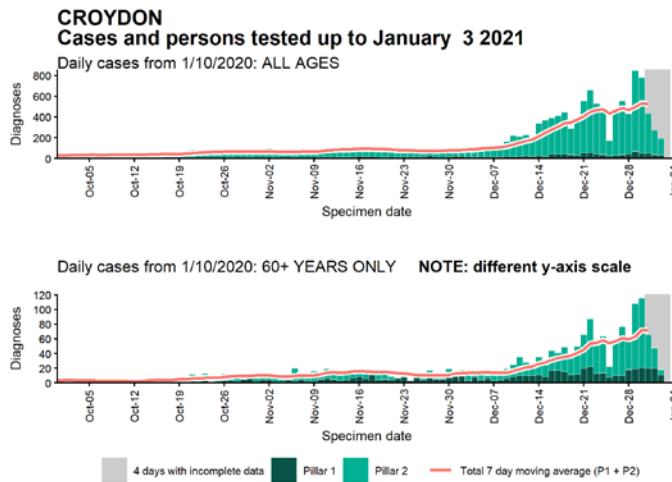
Data from SGSS. Produced by Outbreak Surveillance Team, PHE

Case numbers, testing numbers and positivity, City of London : 01 Sep to 03 Jan 2021



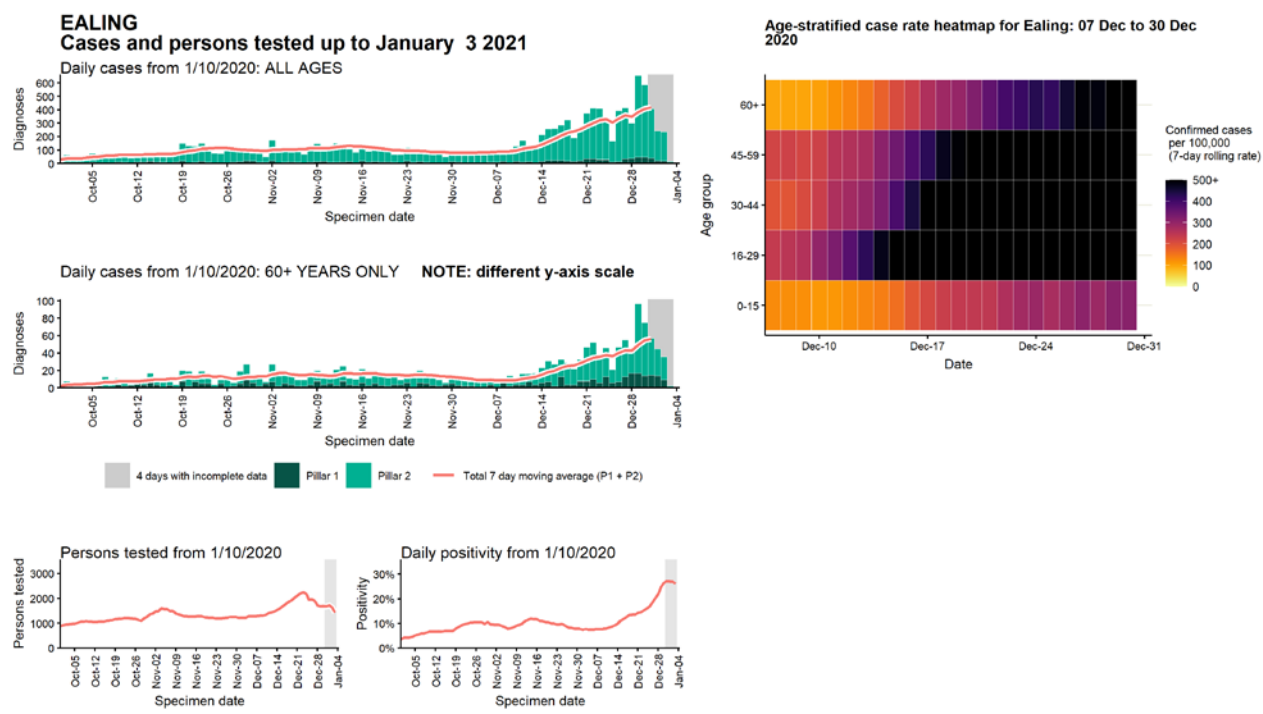
Data from SGSS. Produced by Outbreak Surveillance Team, PHE

Case numbers, testing numbers and positivity, Croydon : 01 Sep to 03 Jan 2021



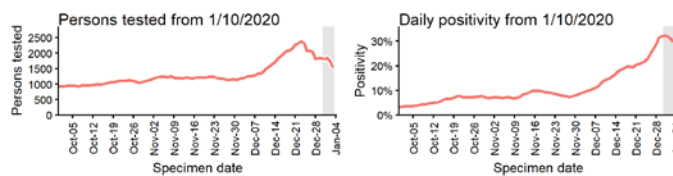
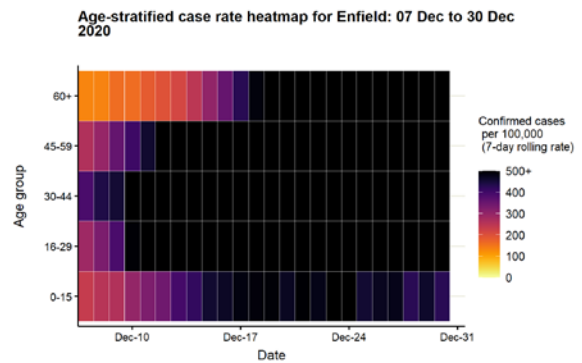
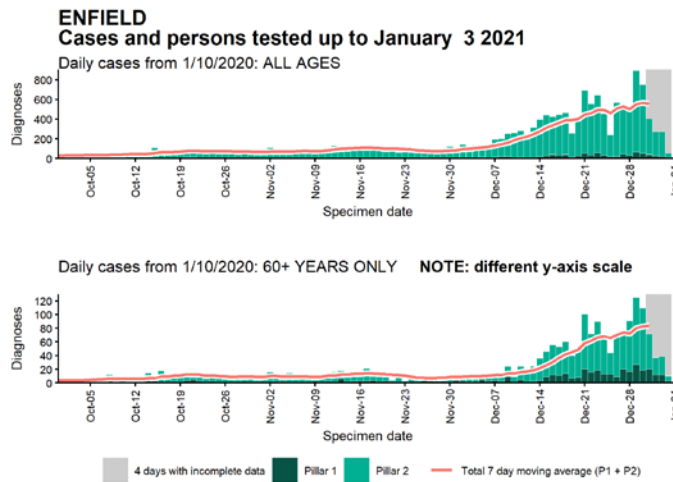
Data from SGSS. Produced by Outbreak Surveillance Team, PHE

Case numbers, testing numbers and positivity, Ealing : 01 Sep to 03 Jan 2021



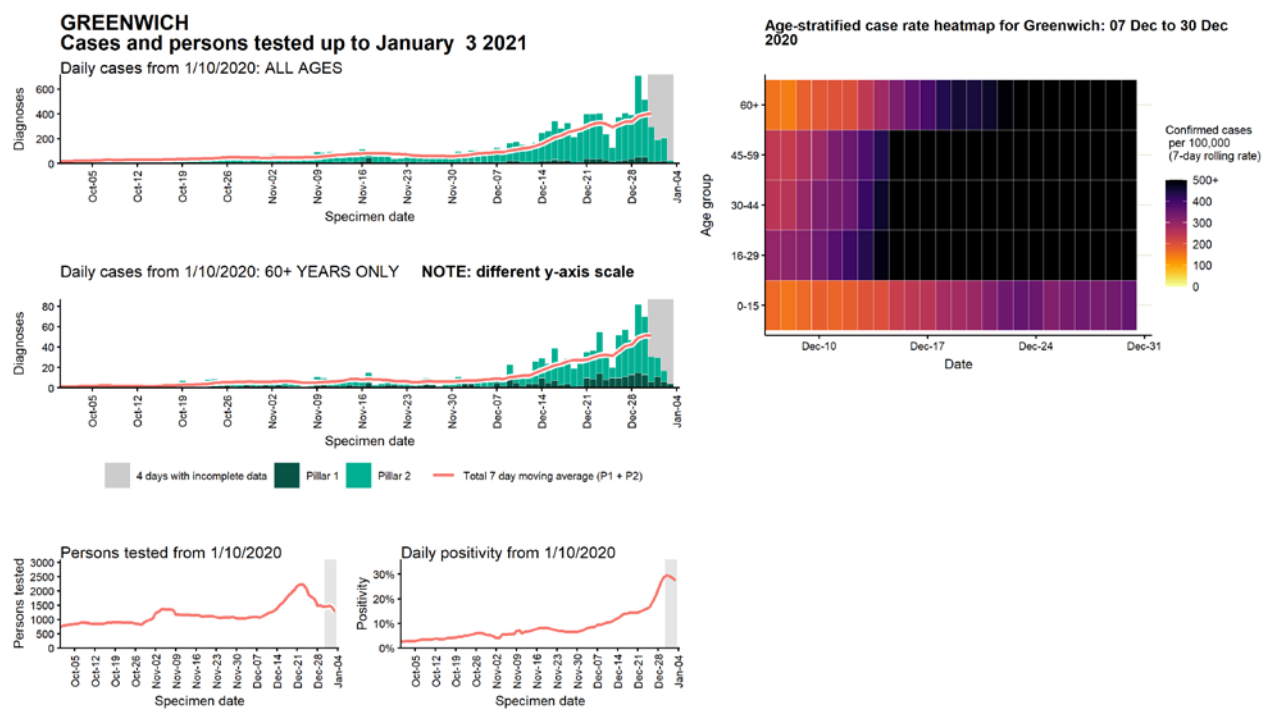
Data from SGSS. Produced by Outbreak Surveillance Team, PHE

Case numbers, testing numbers and positivity, Enfield : 01 Sep to 03 Jan 2021



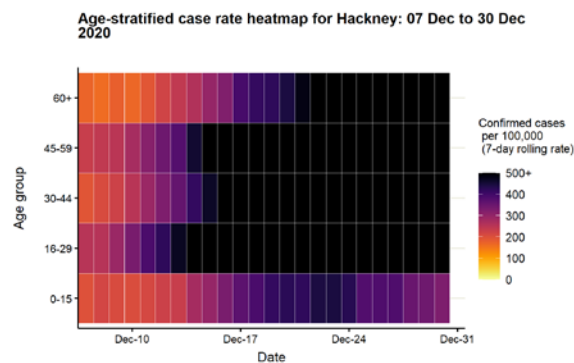
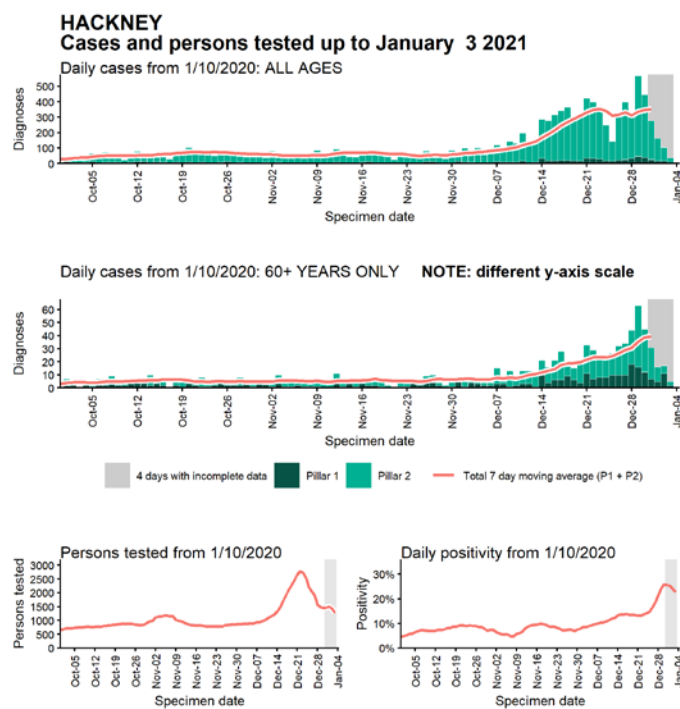
Data from SGSS. Produced by Outbreak Surveillance Team, PHE

Case numbers, testing numbers and positivity, Greenwich : 01 Sep to 03 Jan 2021



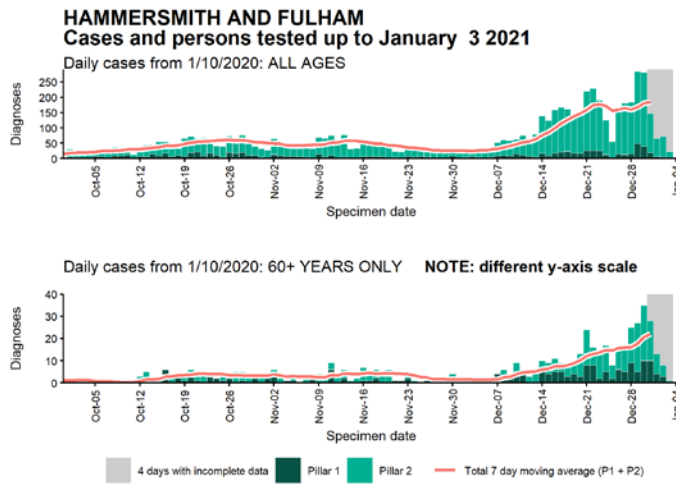
Data from SGSS. Produced by Outbreak Surveillance Team, PHE

Case numbers, testing numbers and positivity, Hackney : 01 Sep to 03 Jan 2021

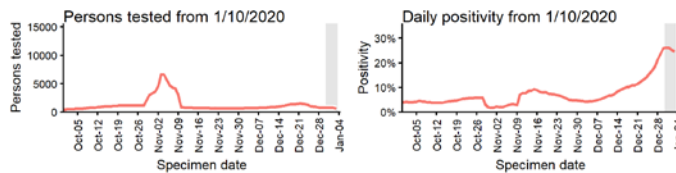
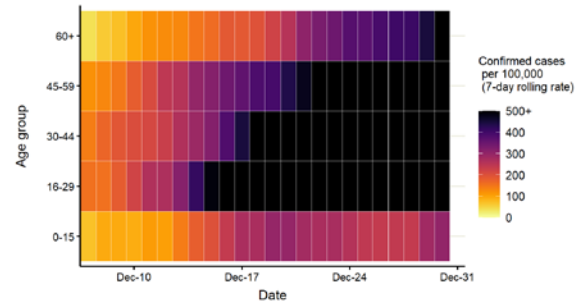


Data from SGSS. Produced by Outbreak Surveillance Team, PHE

Case numbers, testing numbers and positivity, Hammersmith and Fulham : 01 Sep to 03 Jan 2021

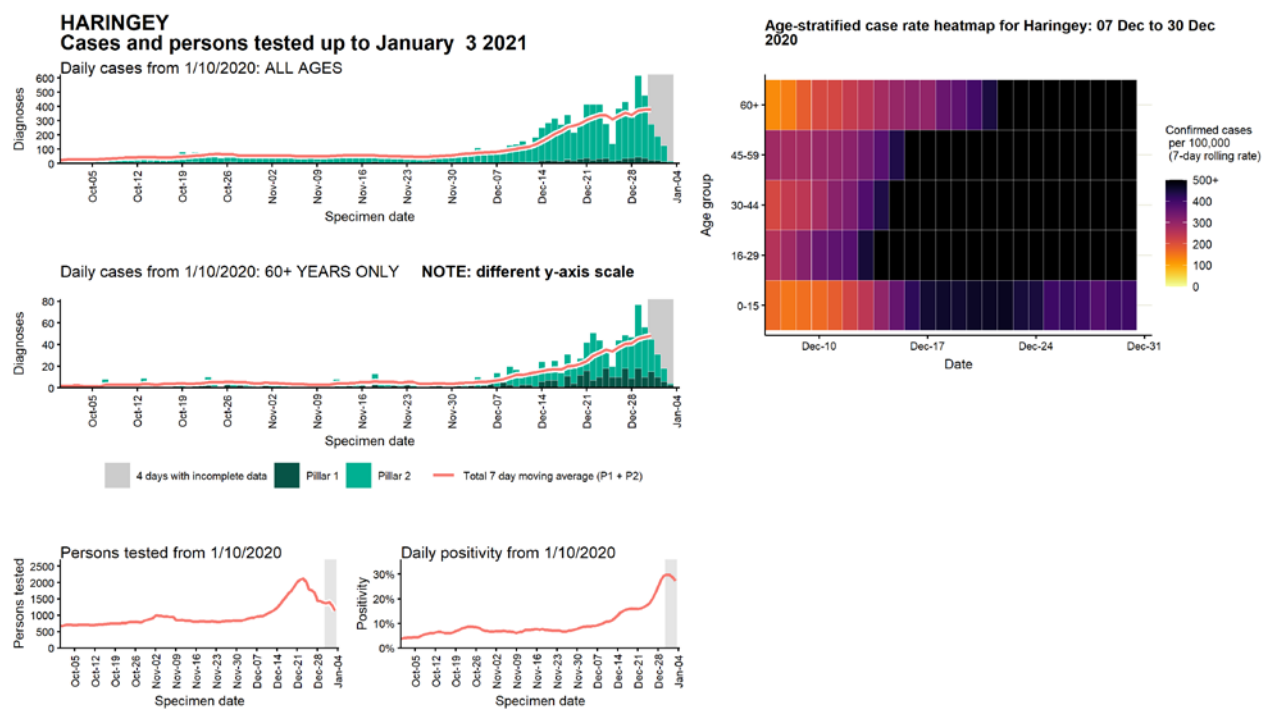


Age-stratified case rate heatmap for Hammersmith and Fulham: 07 Dec to 30 Dec 2020



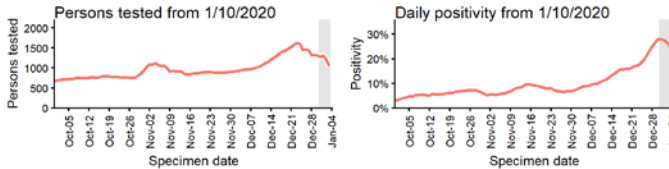
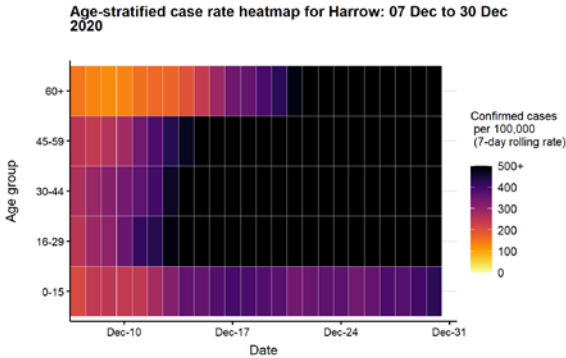
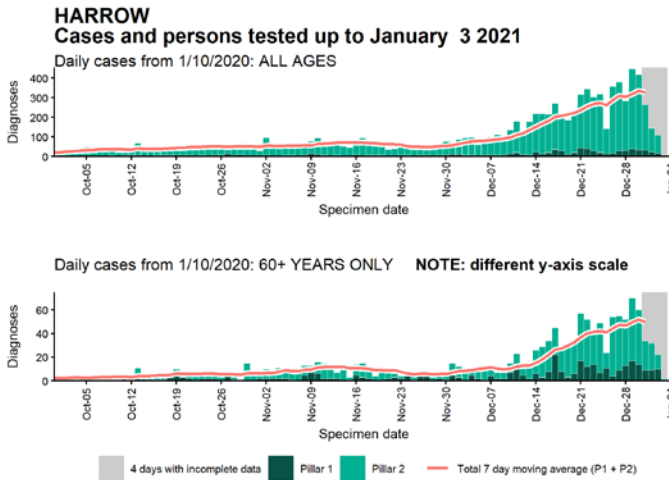
Data from SGSS. Produced by Outbreak Surveillance Team, PHE

Case numbers, testing numbers and positivity, Haringey : 01 Sep to 03 Jan 2021



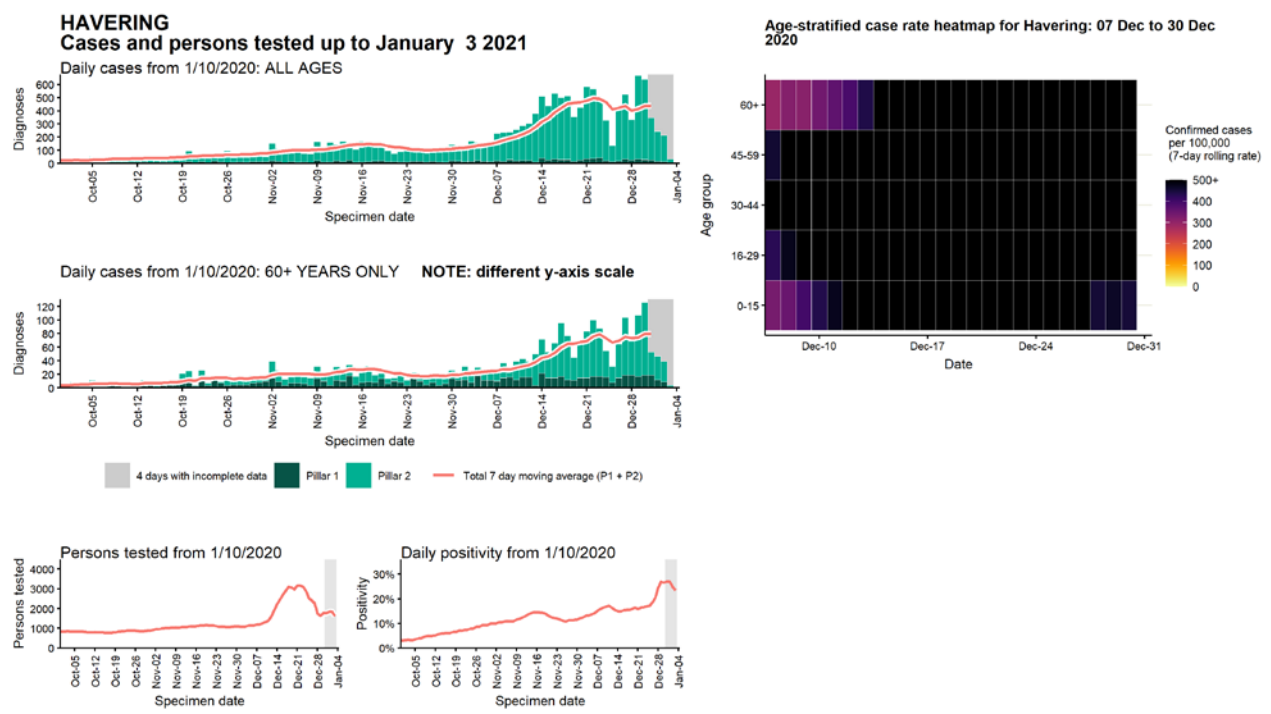
Data from SGSS. Produced by Outbreak Surveillance Team, PHE

Case numbers, testing numbers and positivity, Harrow : 01 Sep to 03 Jan 2021



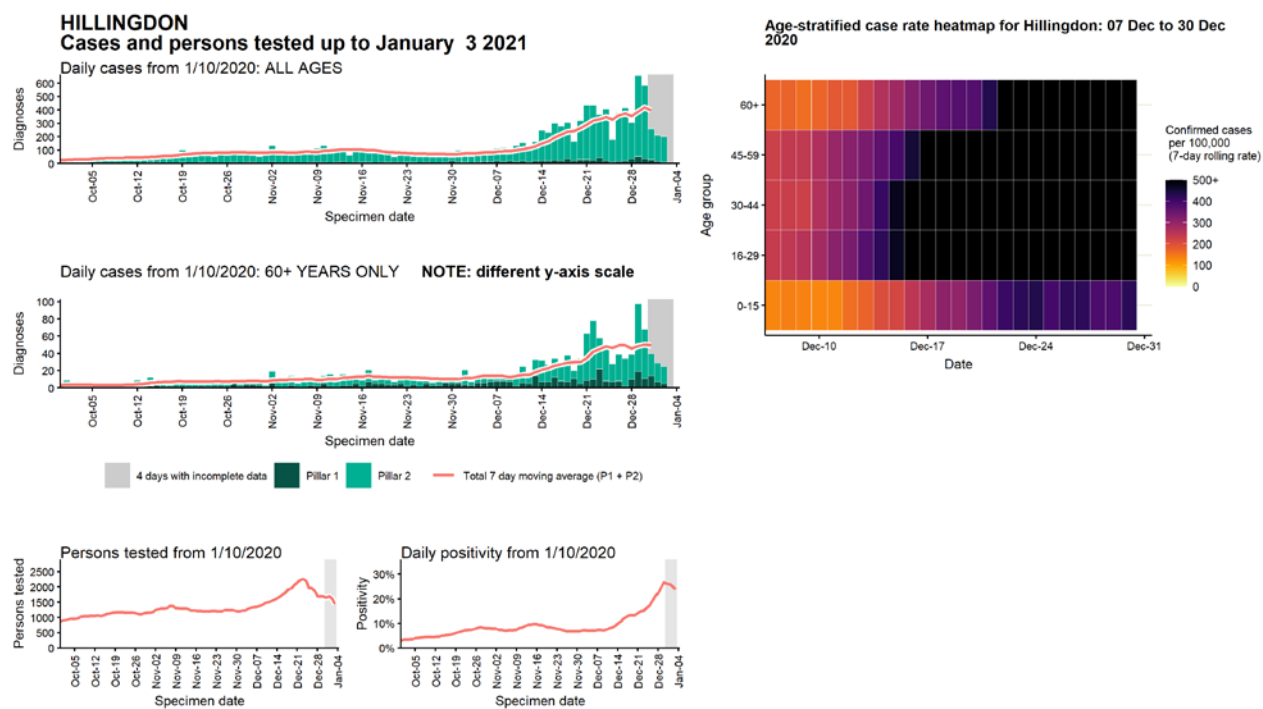
Data from SGSS. Produced by Outbreak Surveillance Team, PHE

Case numbers, testing numbers and positivity, Havering : 01 Sep to 03 Jan 2021

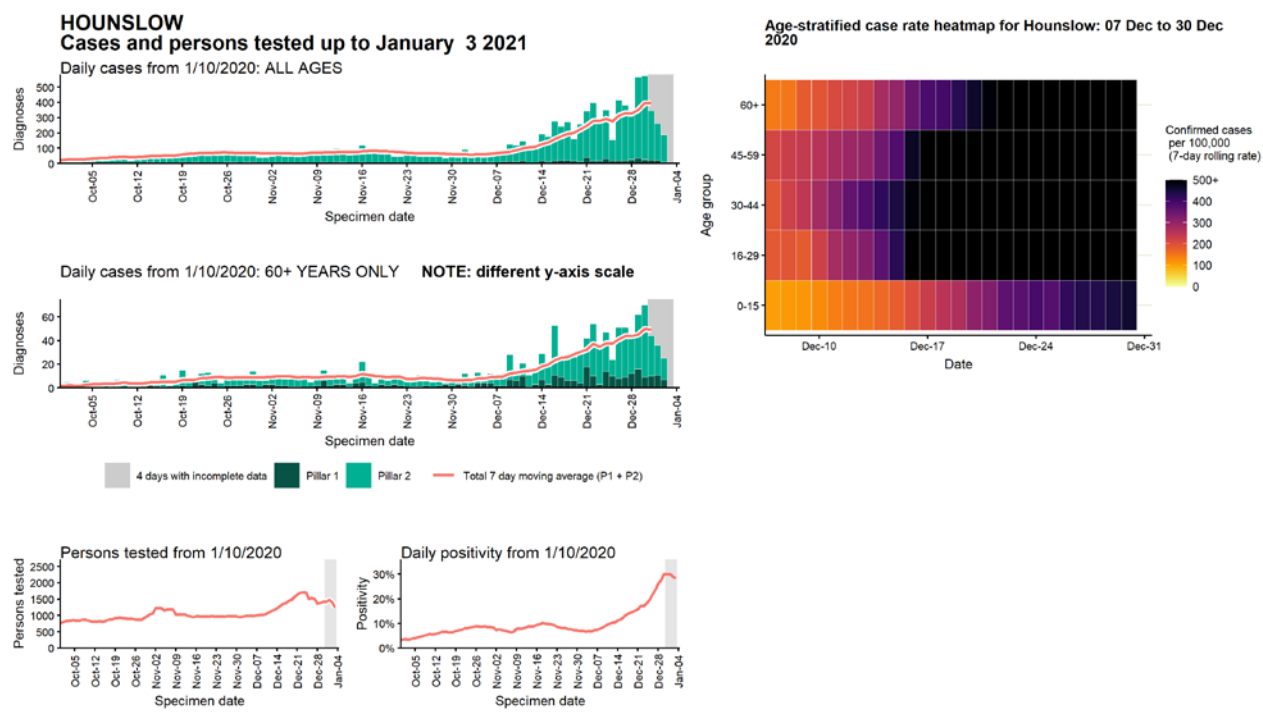


Data from SGSS. Produced by Outbreak Surveillance Team, PHE

Case numbers, testing numbers and positivity, Hillingdon : 01 Sep to 03 Jan 2021

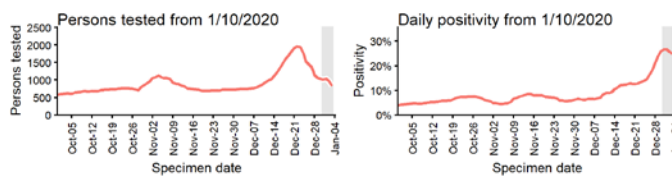
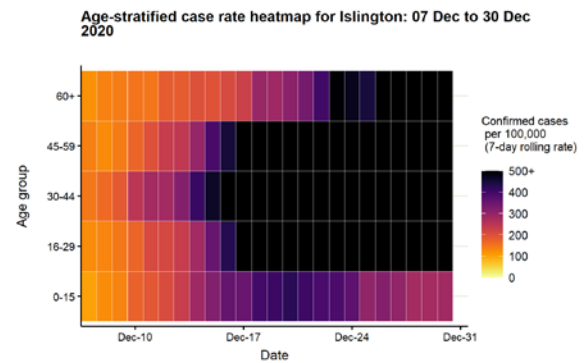
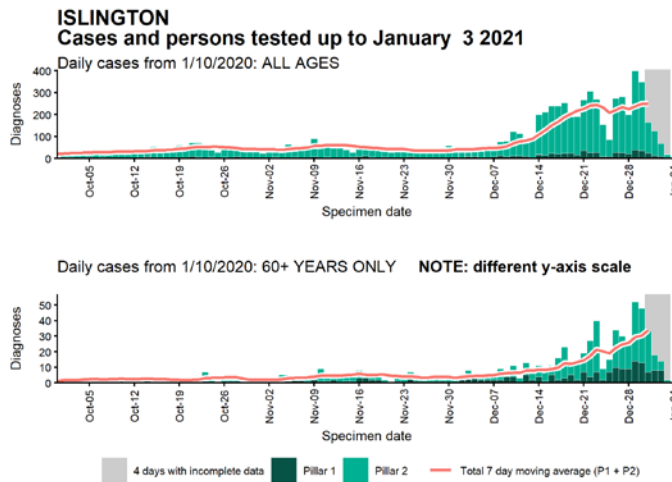


Case numbers, testing numbers and positivity, Hounslow : 01 Sep to 03 Jan 2021



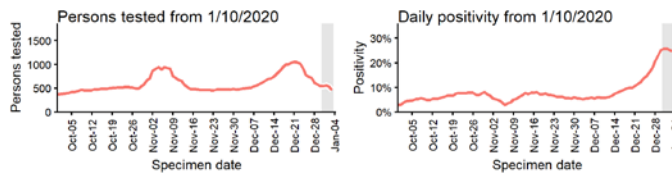
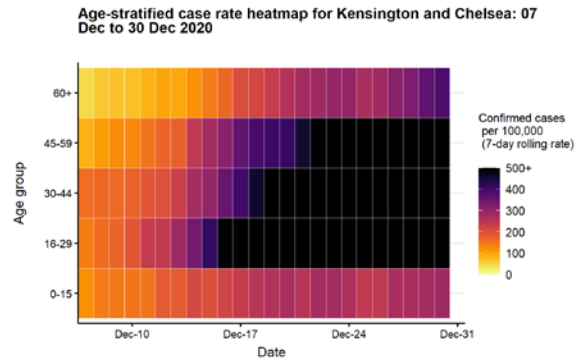
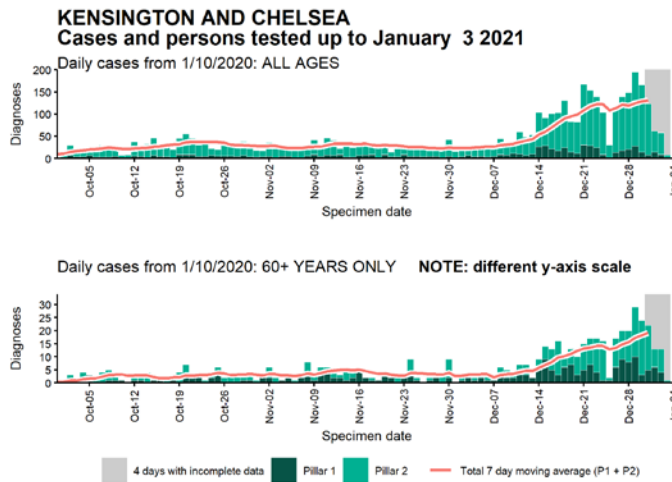
Data from SGSS. Produced by Outbreak Surveillance Team, PHE

Case numbers, testing numbers and positivity, Islington : 01 Sep to 03 Jan 2021



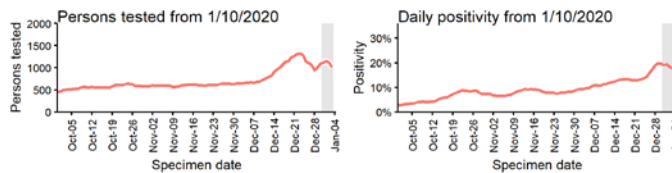
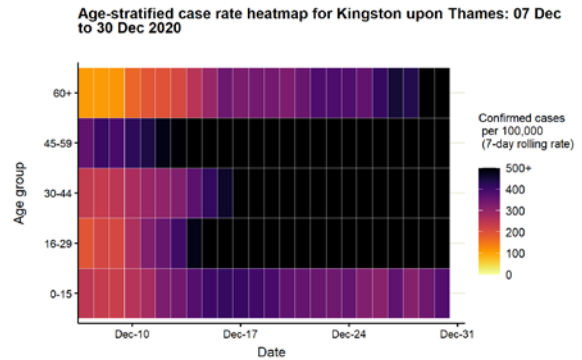
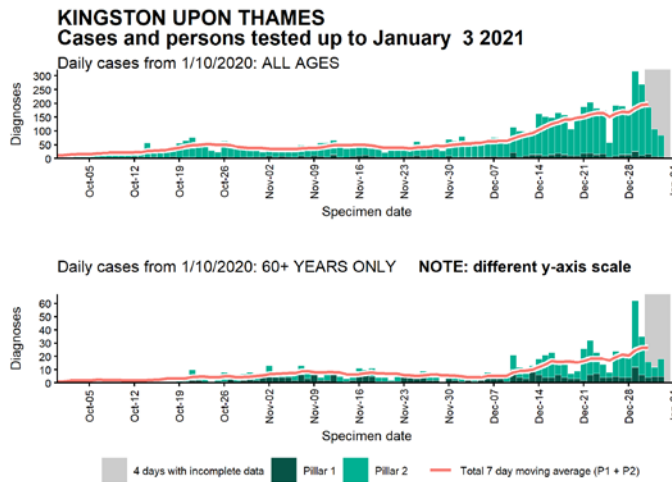
Data from SGSS. Produced by Outbreak Surveillance Team, PHE

Case numbers, testing numbers and positivity, Kensington and Chelsea : 01 Sep to 03 Jan 2021



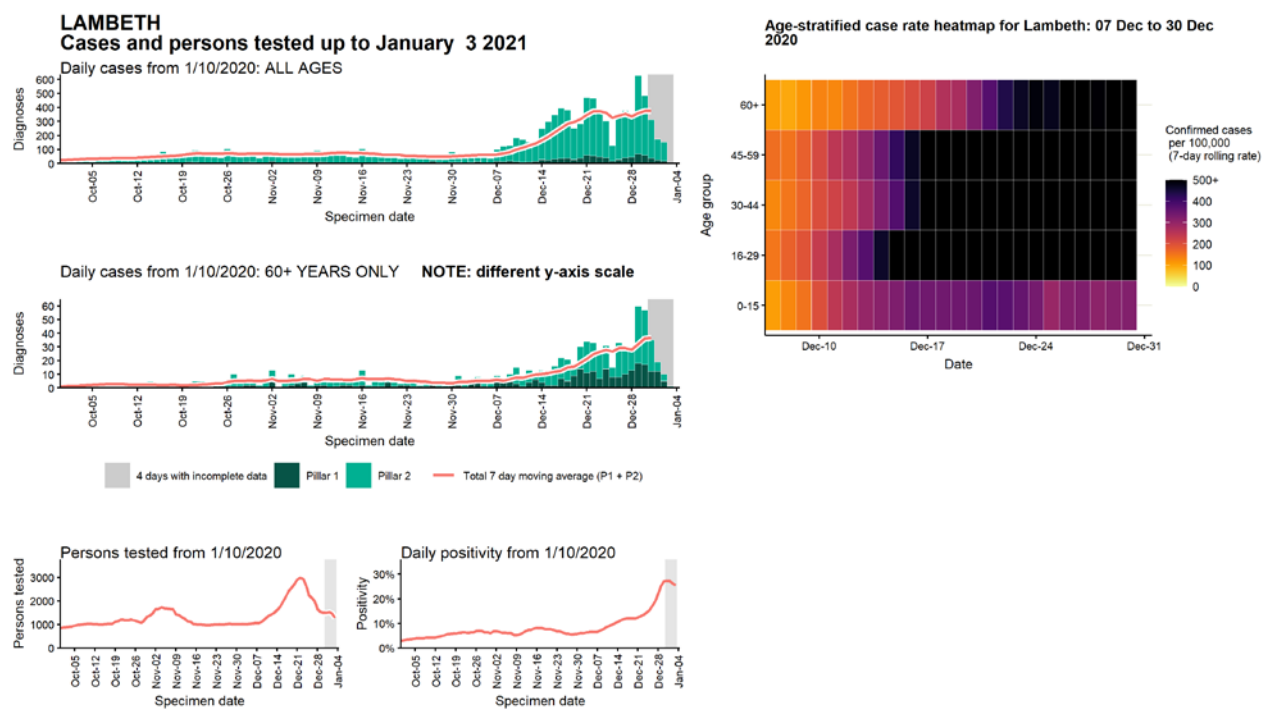
Data from SGSS. Produced by Outbreak Surveillance Team, PHE

Case numbers, testing numbers and positivity, Kingston upon Thames : 01 Sep to 03 Jan 2021



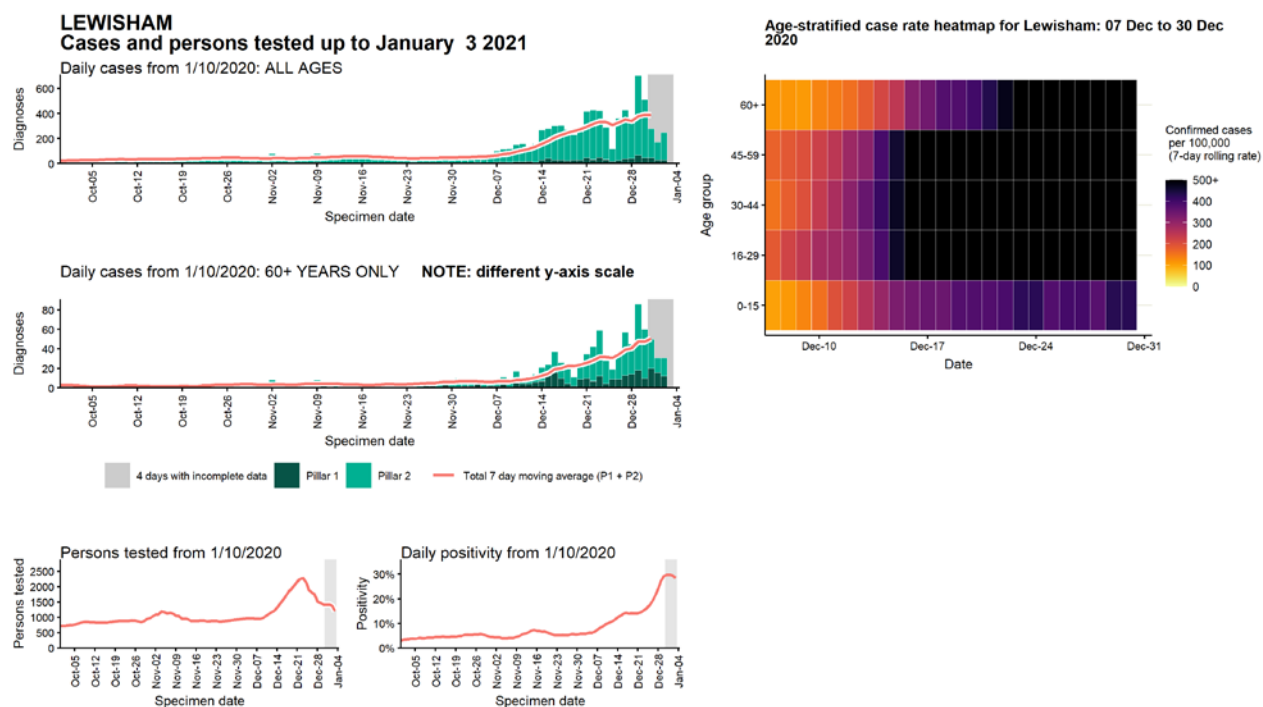
Data from SGSS. Produced by Outbreak Surveillance Team, PHE

Case numbers, testing numbers and positivity, Lambeth : 01 Sep to 03 Jan 2021



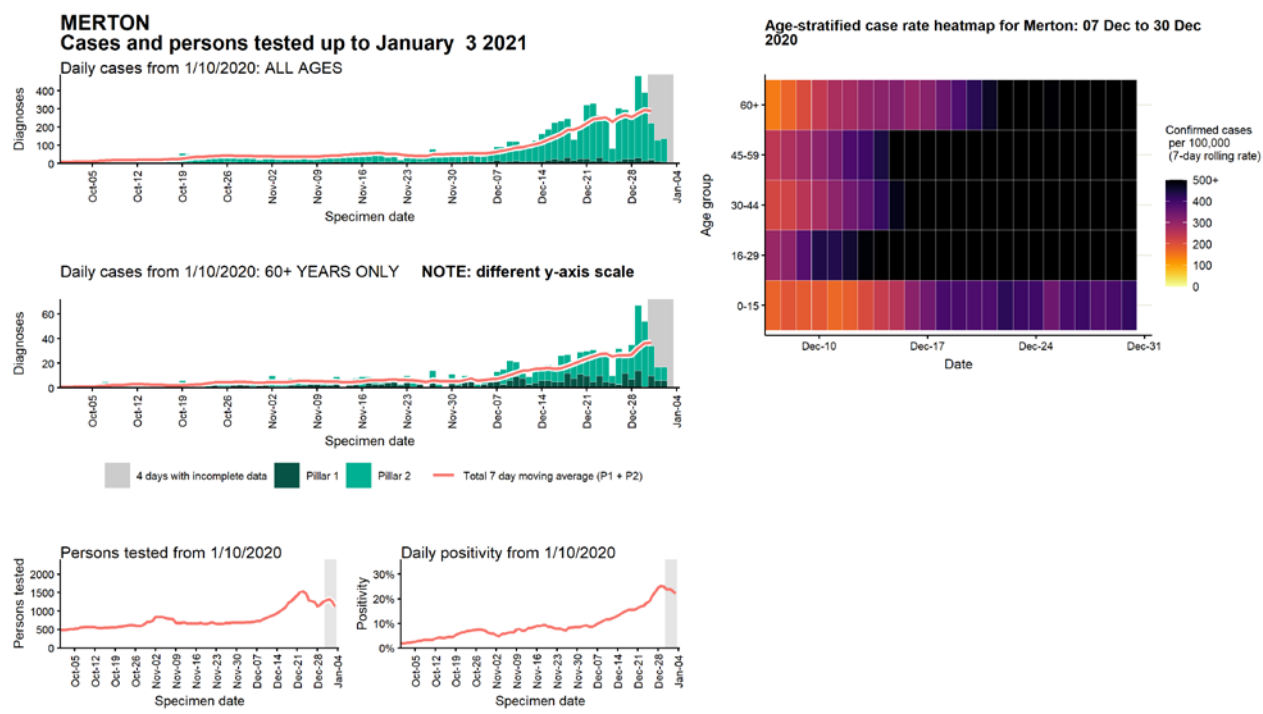
Data from SGSS. Produced by Outbreak Surveillance Team, PHE

Case numbers, testing numbers and positivity, Lewisham : 01 Sep to 03 Jan 2021



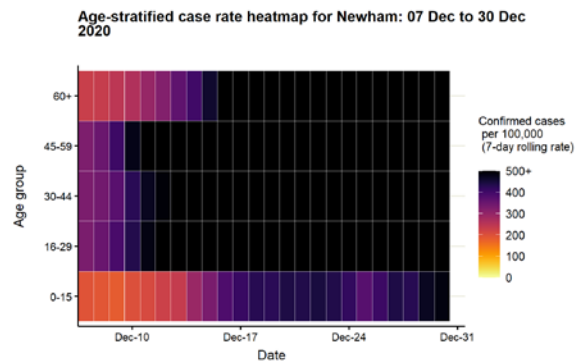
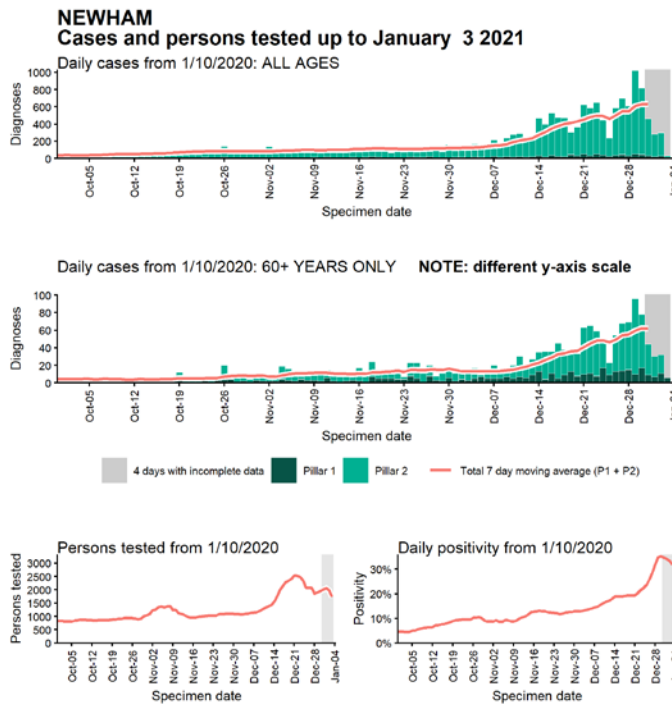
Data from SGSS. Produced by Outbreak Surveillance Team, PHE

Case numbers, testing numbers and positivity, Merton : 01 Sep to 03 Jan 2021



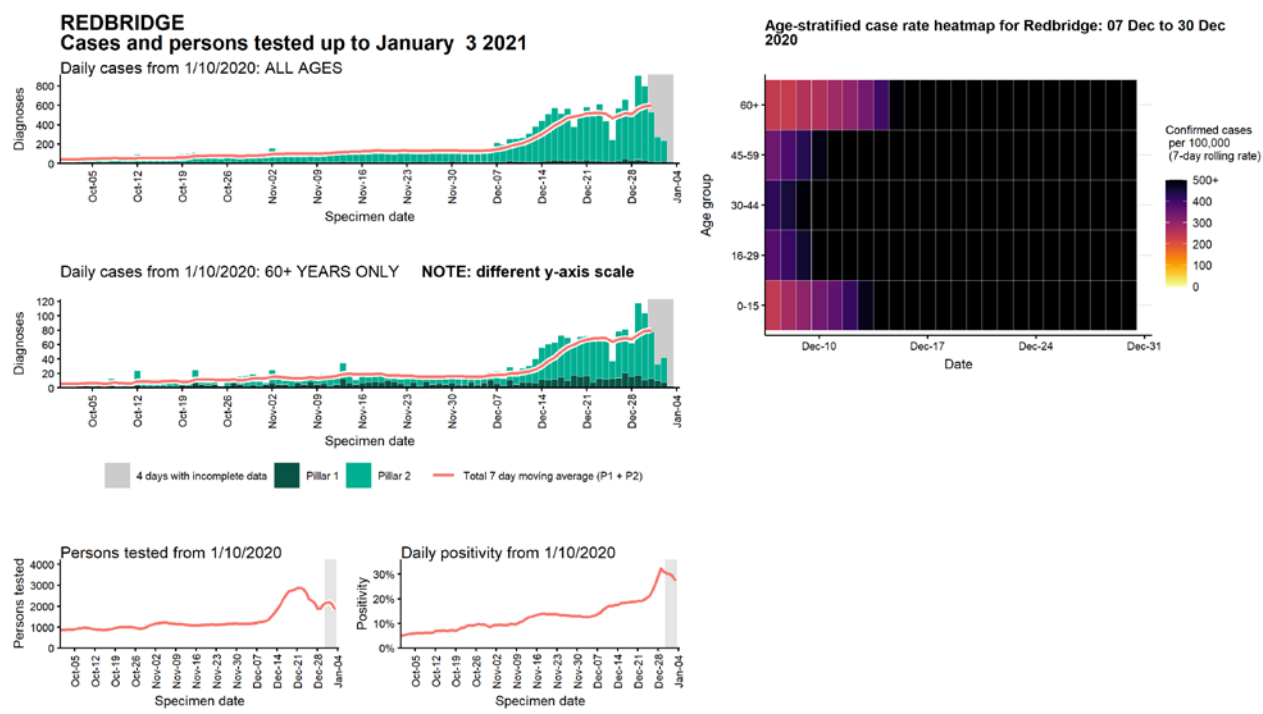
Data from SGSS. Produced by Outbreak Surveillance Team, PHE

Case numbers, testing numbers and positivity, Newham : 01 Sep to 03 Jan 2021



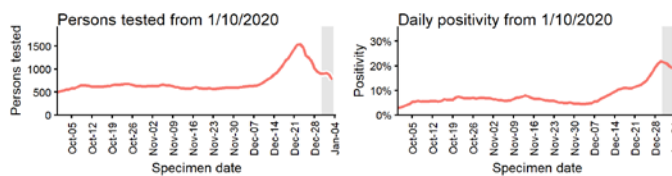
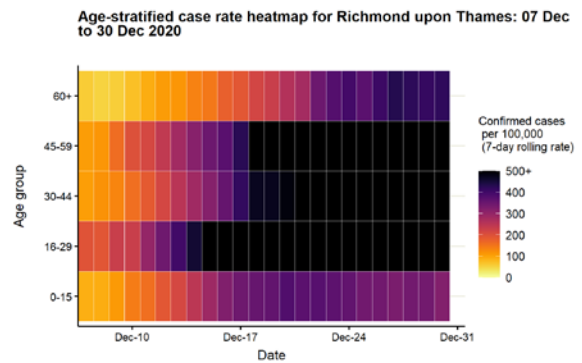
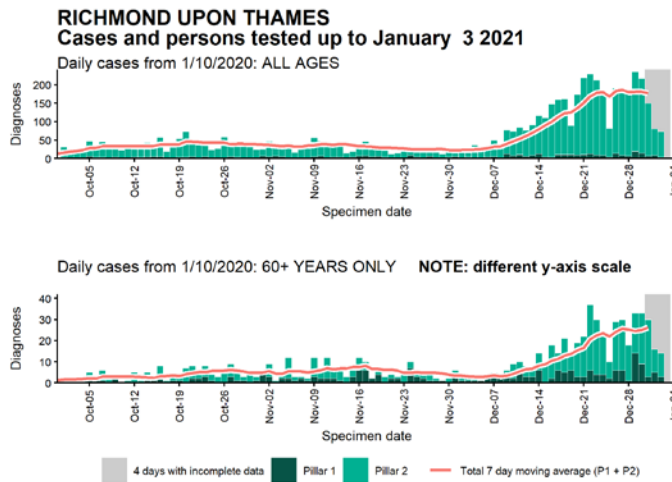
Data from SGSS. Produced by Outbreak Surveillance Team, PHE

Case numbers, testing numbers and positivity, Redbridge : 01 Sep to 03 Jan 2021



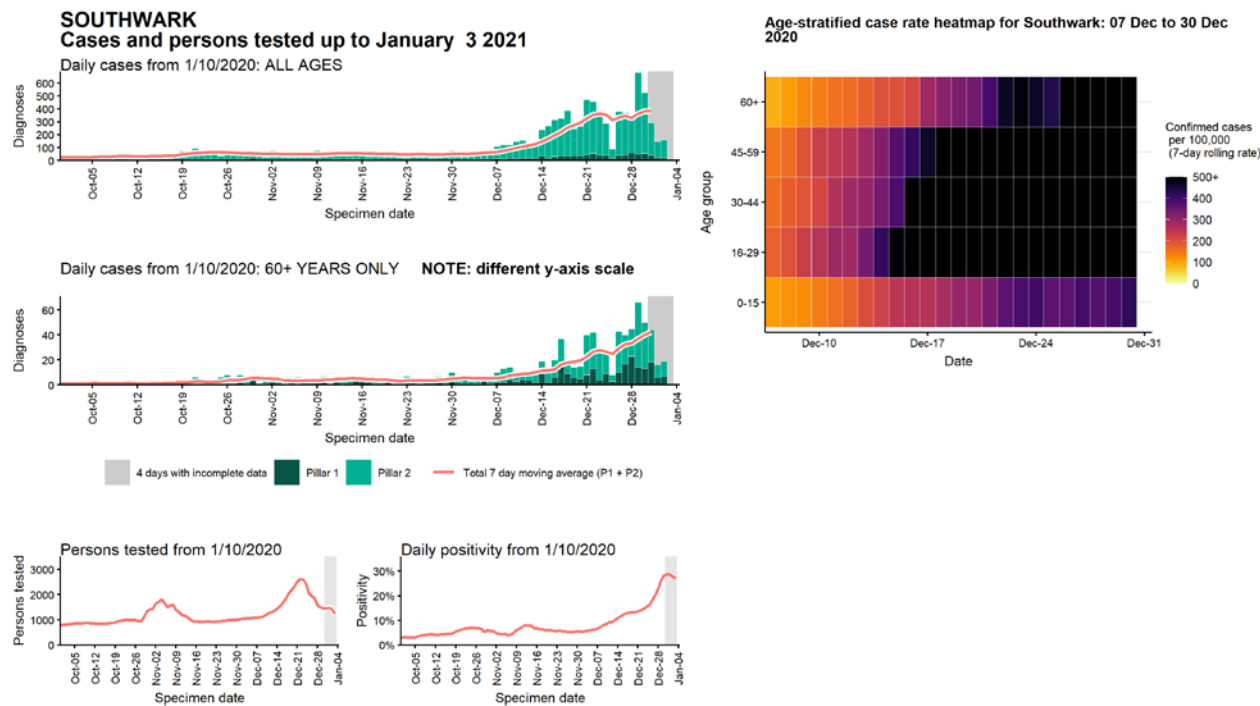
Data from SGSS. Produced by Outbreak Surveillance Team, PHE

Case numbers, testing numbers and positivity, Richmond upon Thames : 01 Sep to 03 Jan 2021



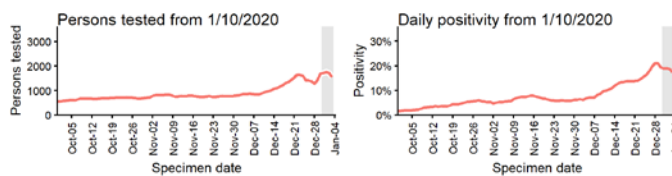
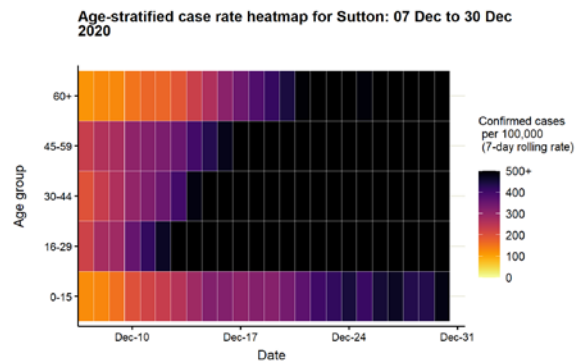
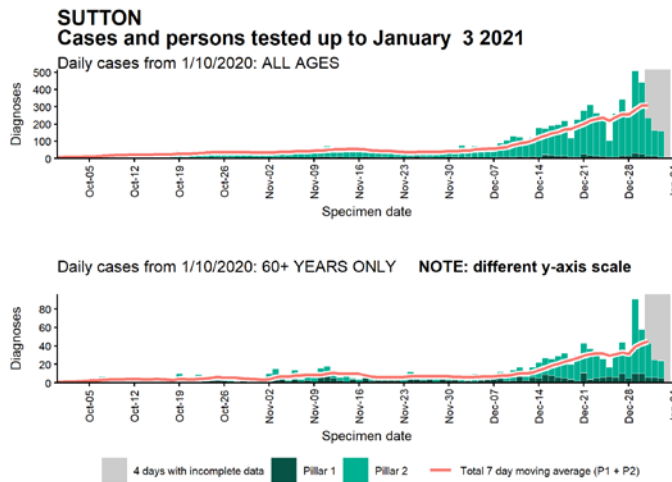
Data from SGSS. Produced by Outbreak Surveillance Team, PHE

Case numbers, testing numbers and positivity, Southwark : 01 Sep to 03 Jan 2021



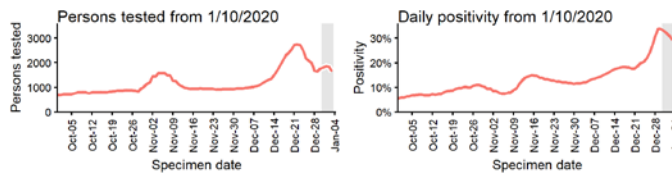
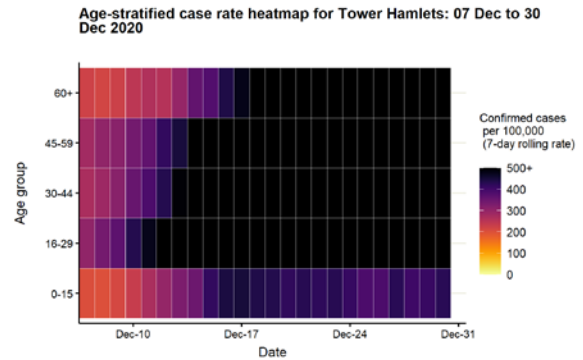
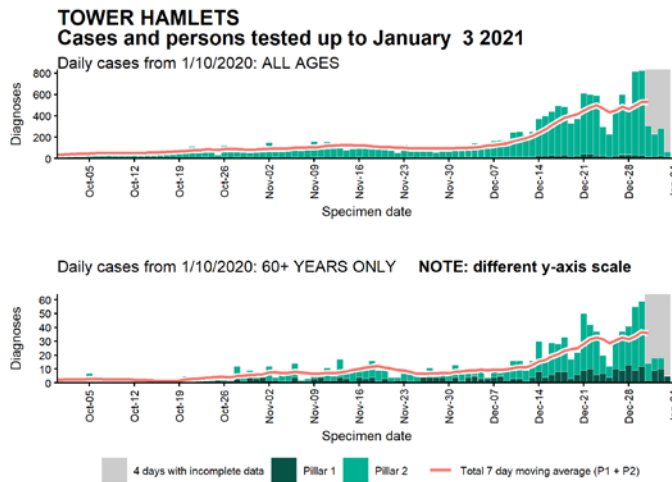
Data from SGSS. Produced by Outbreak Surveillance Team, PHE

Case numbers, testing numbers and positivity, Sutton : 01 Sep to 03 Jan 2021



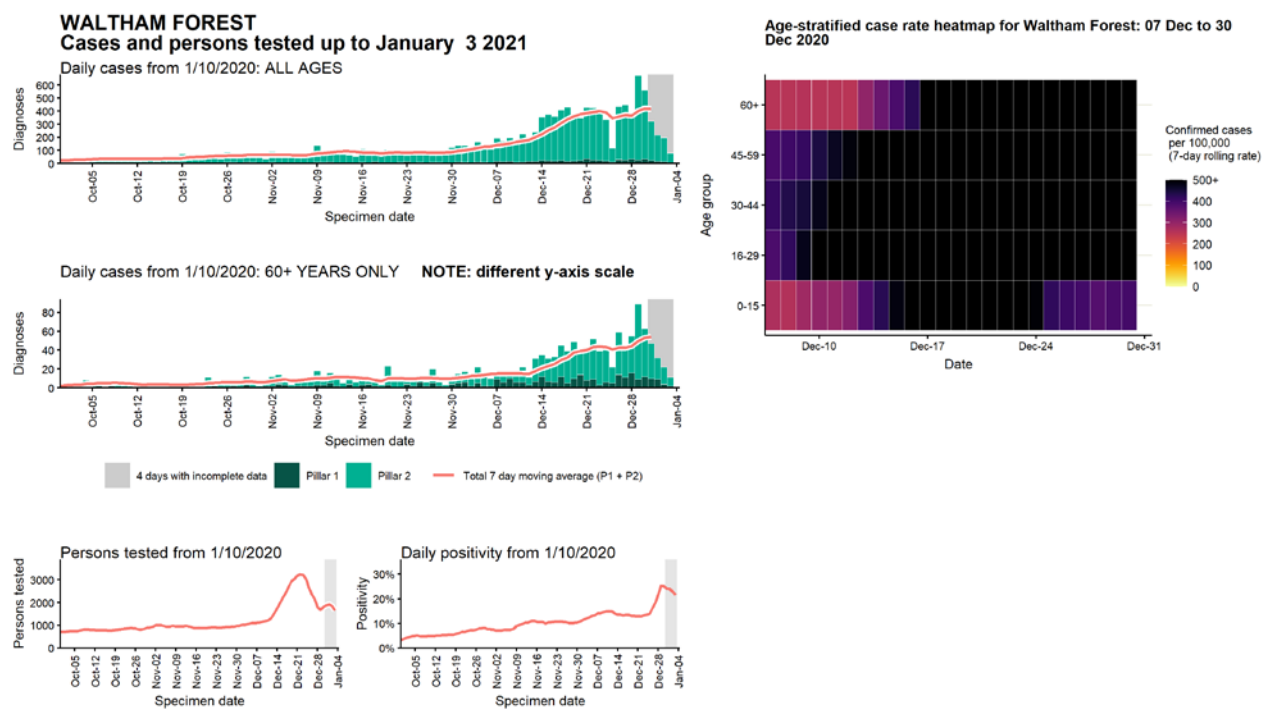
Data from SGSS. Produced by Outbreak Surveillance Team, PHE

Case numbers, testing numbers and positivity, Tower Hamlets : 01 Sep to 03 Jan 2021



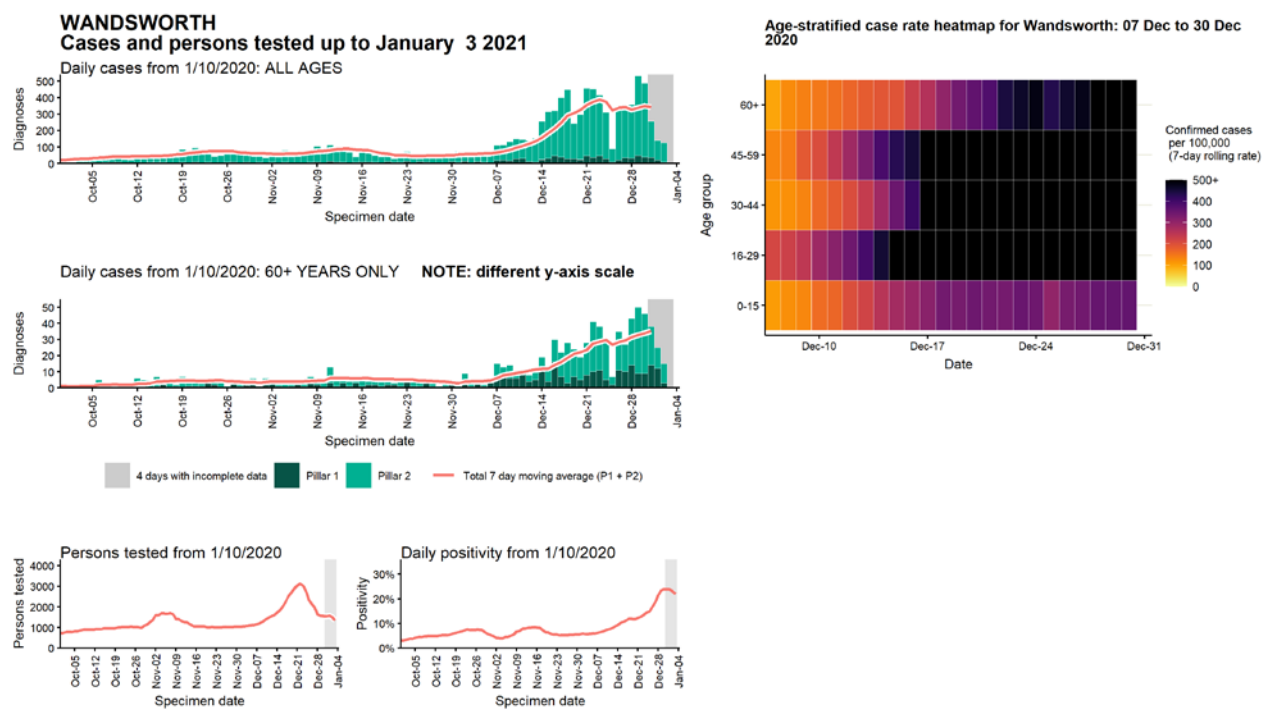
Data from SGSS. Produced by Outbreak Surveillance Team, PHE

Case numbers, testing numbers and positivity, Waltham Forest : 01 Sep to 03 Jan 2021



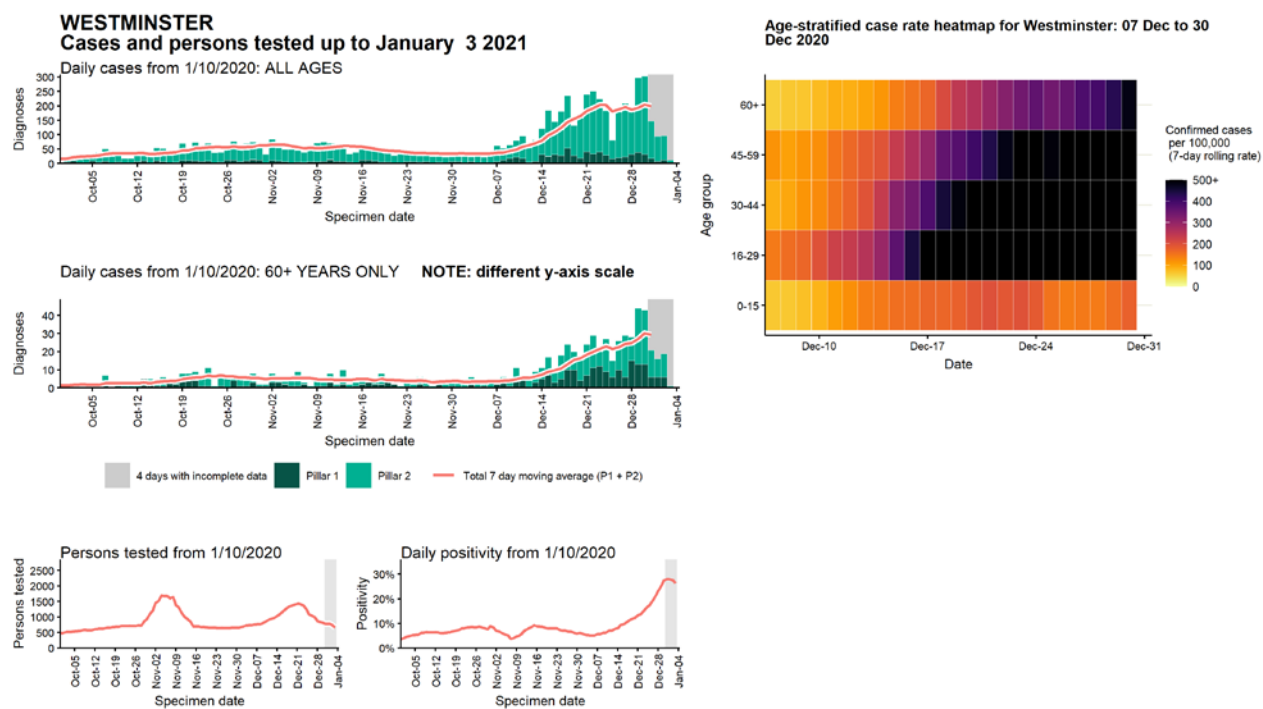
Data from SGSS. Produced by Outbreak Surveillance Team, PHE

Case numbers, testing numbers and positivity, Wandsworth : 01 Sep to 03 Jan 2021



Data from SGSS. Produced by Outbreak Surveillance Team, PHE

Case numbers, testing numbers and positivity, Westminster : 01 Sep to 03 Jan 2021



Data from SGSS. Produced by Outbreak Surveillance Team, PHE

© Crown copyright 2020

www.gov.uk/dhsc

This publication is licensed under the terms of the Open Government Licence v3.0 except where otherwise stated. To view this licence, visit nationalarchives.gov.uk/doc/open-government-licence/version/3

Where we have identified any third party copyright information you will need to obtain permission from the copyright holders concerned.

