



Department
of Health &
Social Care

East of England: lower tier local authority watchlist – epidemiological charts

Produced 04 January 2021

NOTES

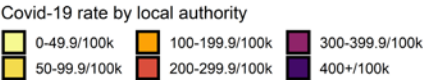
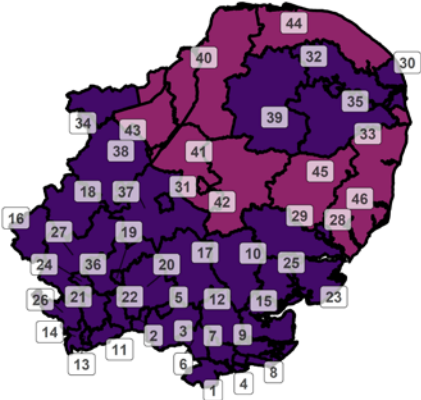
- This data is provided by Public Health England for the purpose of monitoring and supporting the management of Covid-19 infections in Local Authorities.
- The reports are produced using 2019 ONS population data
- If you would like to know the weekly trend for the case rate charts and persons tested chart please see Lower-tier local authority watchlist.

Weekly case rate per 100,000 population by local authority: 24 Dec to 30 Dec 2020

Rank	Local Authority	Case Rate (per 100,000)	Number of cases (1 week)
1	Thurrock	1397.3	2436
2	Broxbourne	1348.7	1312
3	Epping Forest	1322.8	1742
4	Castle Point	1284.6	1161
5	Harlow	1281.8	1116
6	Brentwood	1264.6	974
7	Basildon	1166.1	2163
8	Southend-on-Sea	1084.5	1986
9	Rochford	1035.8	905
10	Braintree	1028.8	1570
11	Hertsmere	1017.9	1068
12	Chelmsford	1000.1	1784
13	Watford	980.6	947
14	Three Rivers	916.2	855
15	Maldon	907.2	589
16	Milton Keynes	874.4	2356
17	Uttlesford	790.9	722
18	Bedford	765.2	1326
19	Stevenage	749.0	658
20	East Hertfordshire	712.5	1067
21	St Albans	704.6	1046
22	Welwyn Hatfield	701.4	863
23	Tendring	696.0	1020

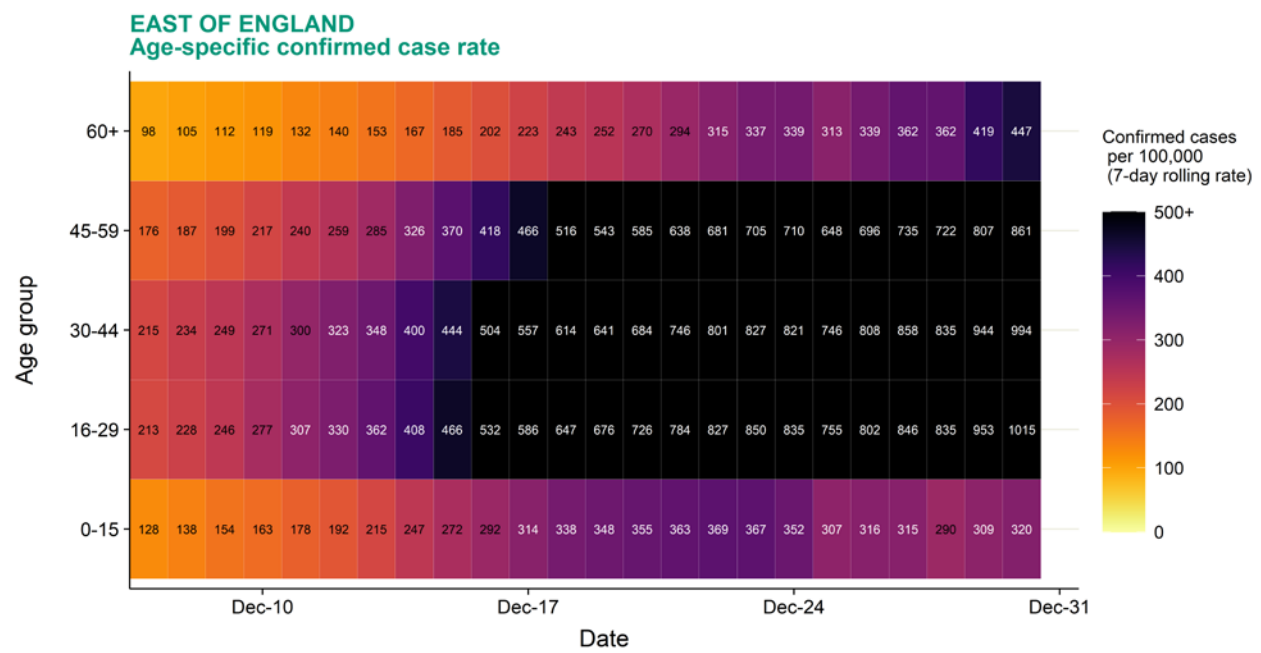
Rank	Local Authority	Case Rate (per 100,000)	Number of cases (1 week)
24	Luton	681.1	1451
25	Colchester	675.9	1316
26	Dacorum	659.1	1020
27	Central Bedfordshire	598.3	1727
28	Ipswich	507.6	695
29	Babergh	483.5	445
30	Great Yarmouth	474.1	471
31	Cambridge	460.7	575
32	Broadland	442.0	578
33	South Norfolk	441.5	622
34	Peterborough	433.6	877
35	Norwich	425.4	598
36	North Hertfordshire	425.2	568
37	South Cambridgeshire	415.5	661
38	Huntingdonshire	414.1	737
39	Breckland	400.1	560
40	King's Lynn and West Norfolk	391.1	592
41	East Cambridgeshire	385.1	346
42	West Suffolk	349.1	625
43	Fenland	348.6	355
44	North Norfolk	340.5	357
45	Mid Suffolk	339.8	353
46	East Suffolk	314.3	784

East of England
COVID-19 cases: 24 Dec to 30 Dec 2020
Weekly case rates per 100,000 population by local authority



Data from SGSS; Pillar 1 and 2 testing. Figure by Outbreak Surveillance Team, Public Health England.
Contains National Statistics data including 2019 population estimates Â© Crown copyright and database right 2020

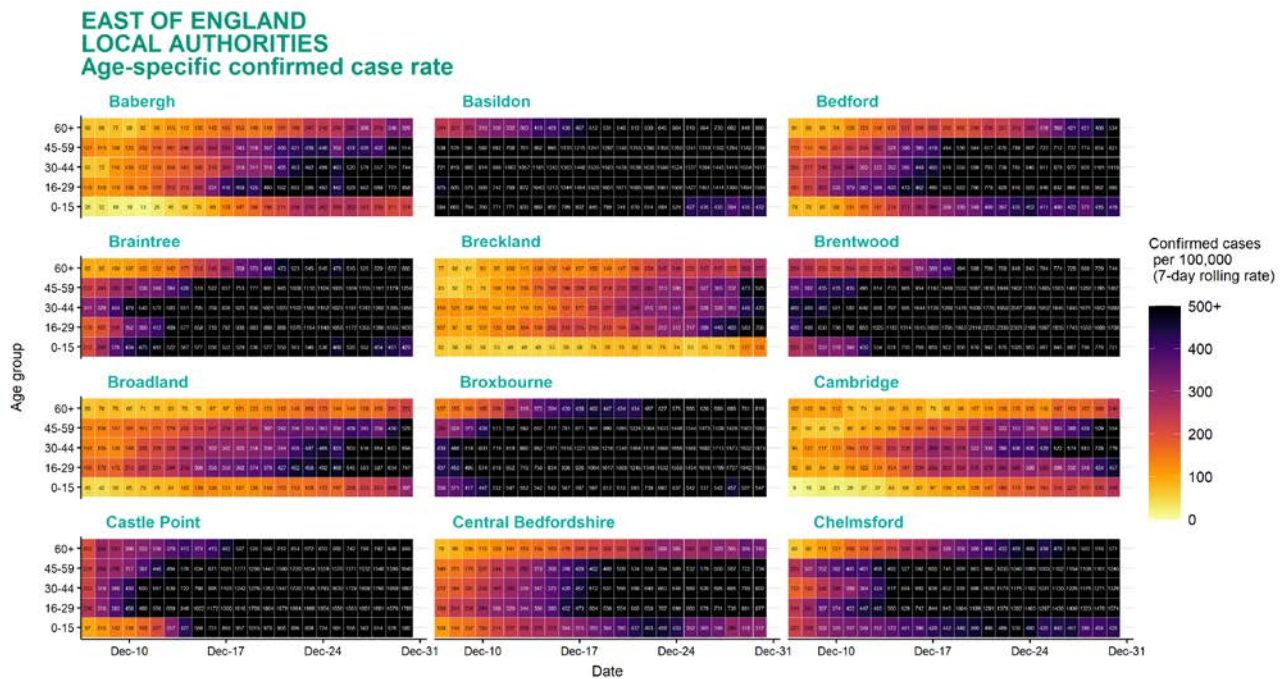
Age-stratified heatmap of weekly case rate for East of England : 07 Dec to 30 Dec 2020



Source: Case data from SGSS. Produced by Outbreak Surveillance Team, PHE

Contains National Statistics data Â© Crown copyright and database right 2020

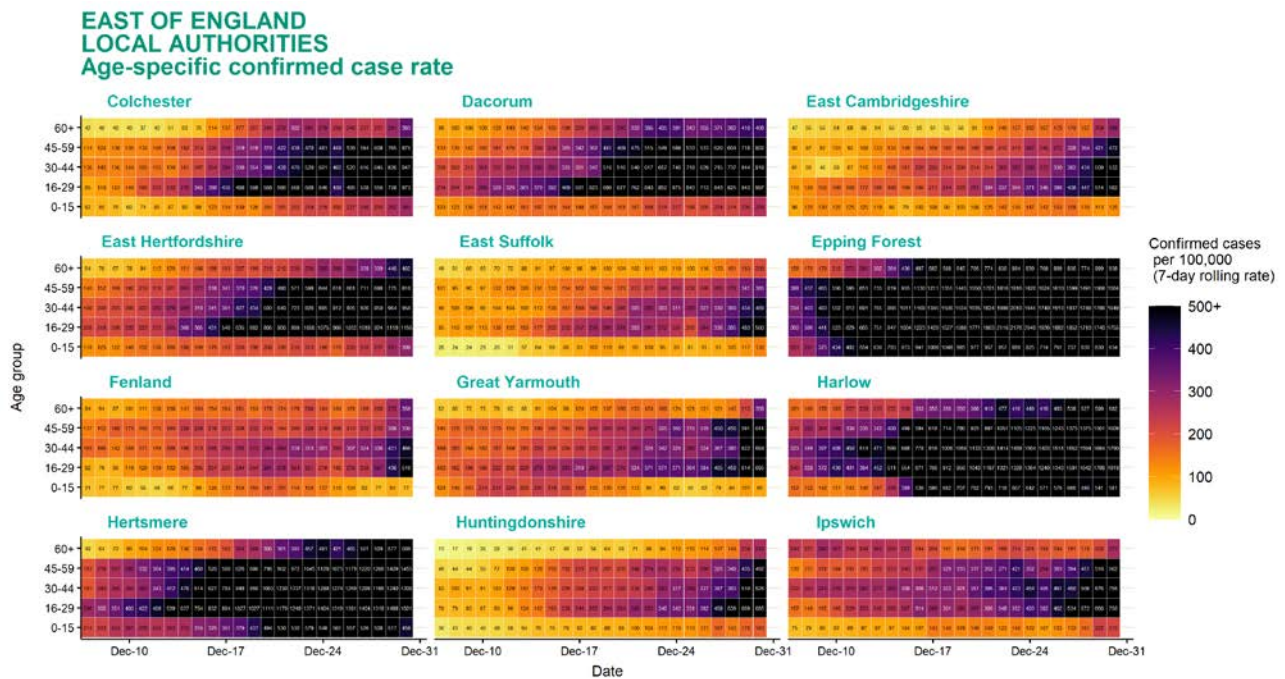
Age-stratified heatmap of weekly case rate by local authority for East of England : 07 Dec to 30 Dec 2020



Source: Case data from SGSS. Produced by Outbreak Surveillance Team, PHE

Contains National Statistics data Â© Crown copyright and database right 2020

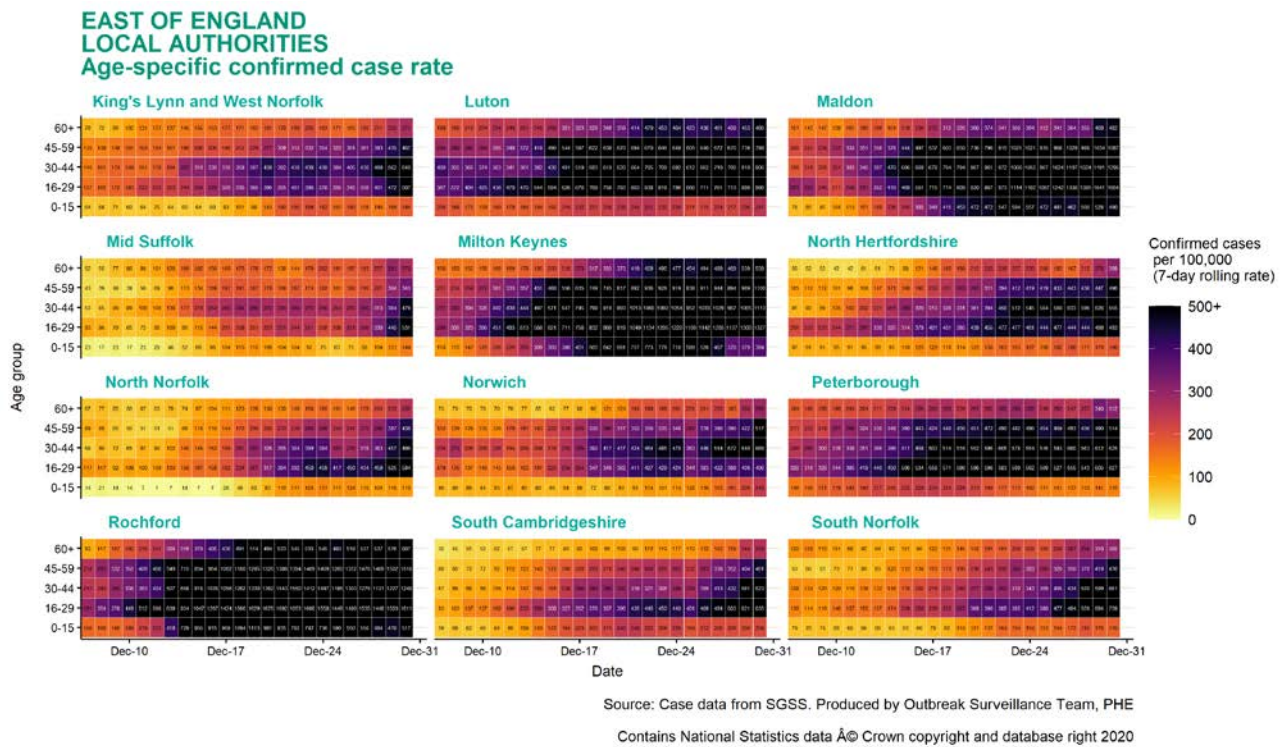
Age-stratified heatmap of weekly case rate by local authority for East of England : 07 Dec to 30 Dec 2020



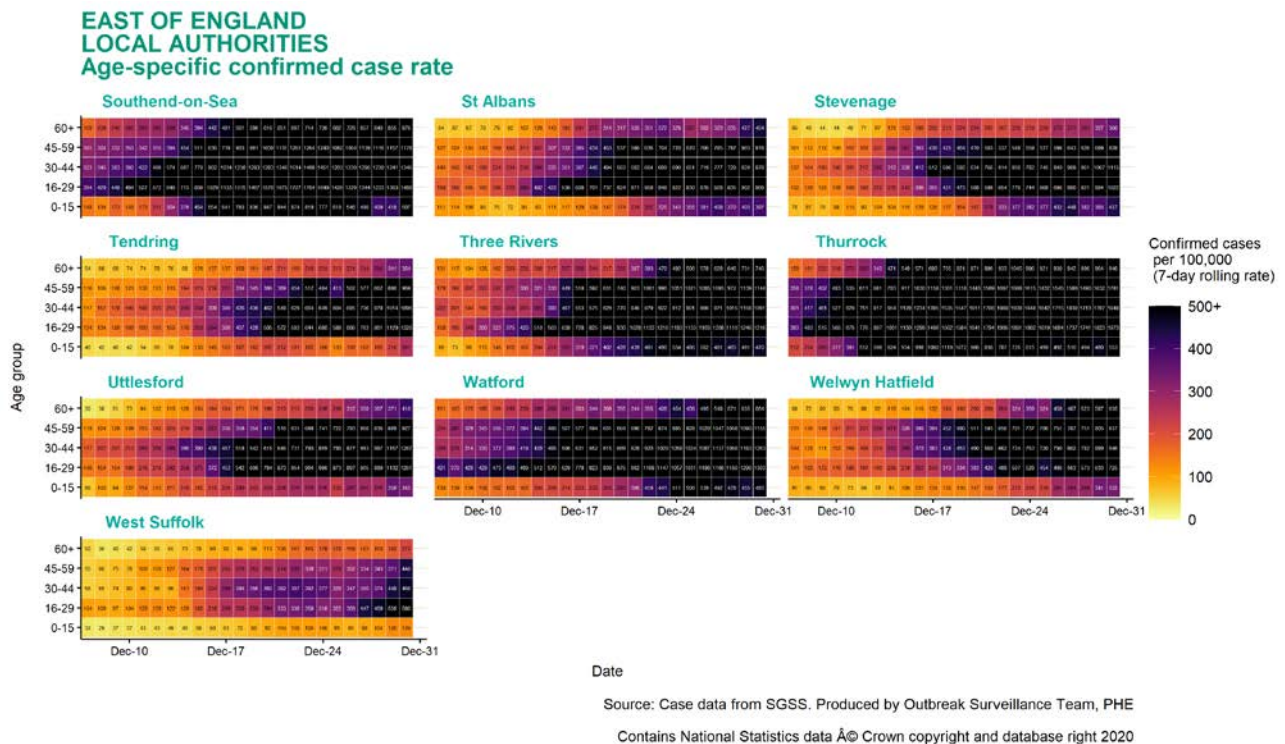
Source: Case data from SGSS. Produced by Outbreak Surveillance Team, PHE

Contains National Statistics data Â© Crown copyright and database right 2020

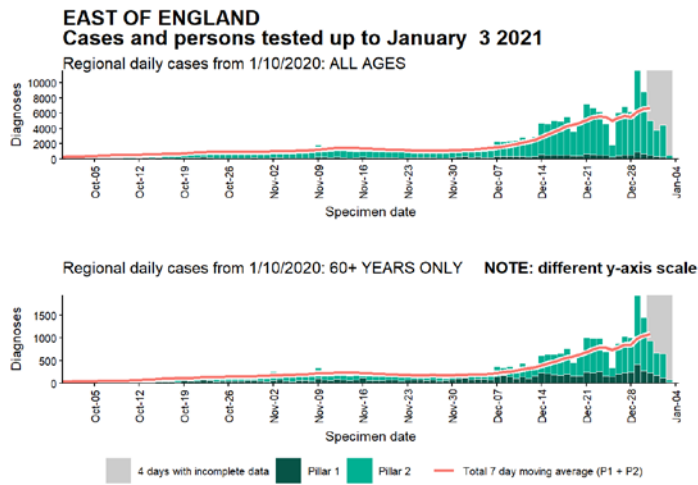
Age-stratified heatmap of weekly case rate by local authority for East of England : 07 Dec to 30 Dec 2020



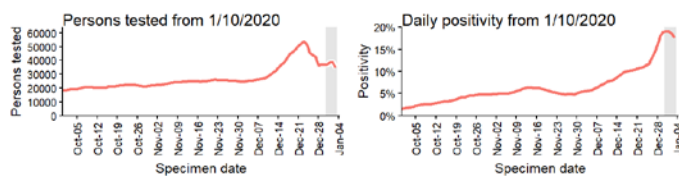
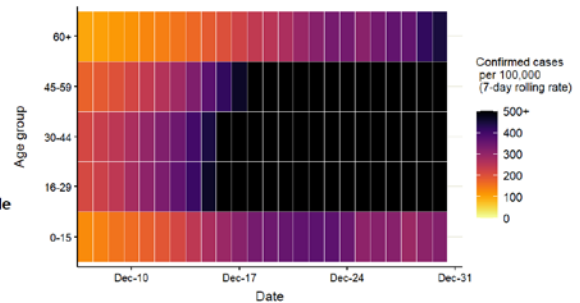
Age-stratified heatmap of weekly case rate by local authority for East of England : 07 Dec to 30 Dec 2020



Regional case numbers, testing numbers and positivity, East of England : 01 Sep to 03 Jan 2021

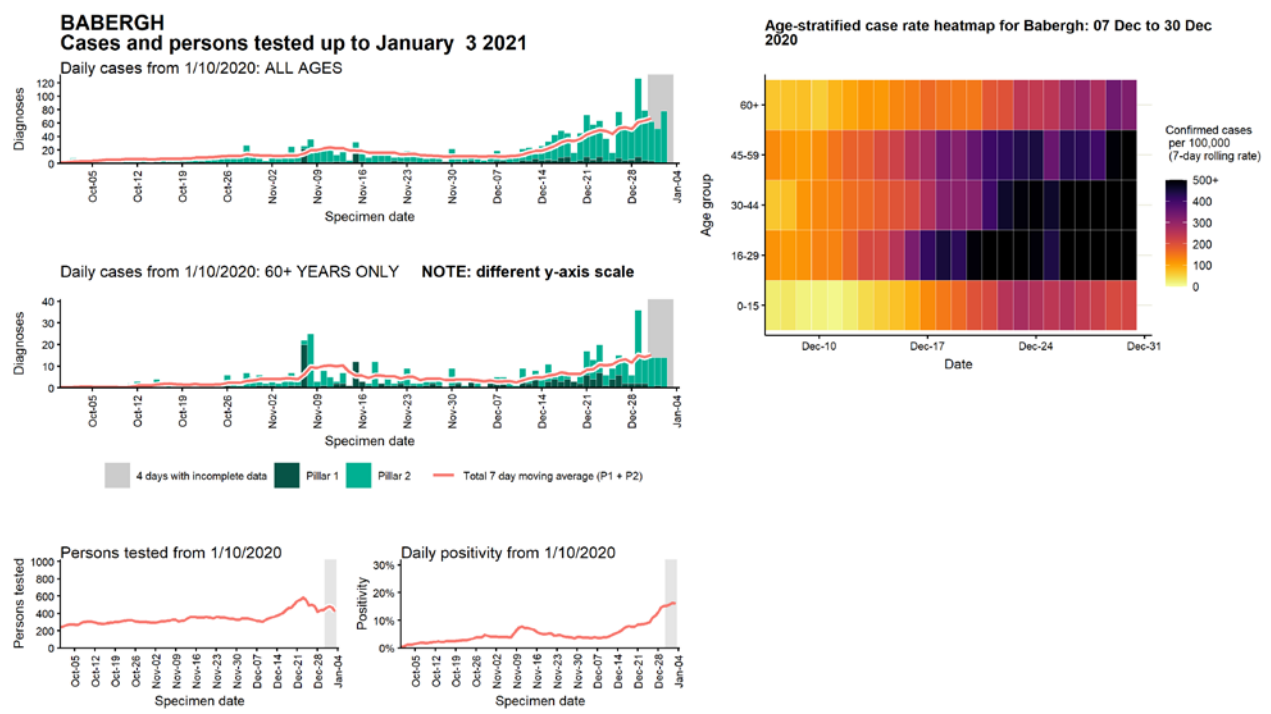


Regional age-stratified case rate heatmap for East of England: 07 Dec to 30 Dec 2020



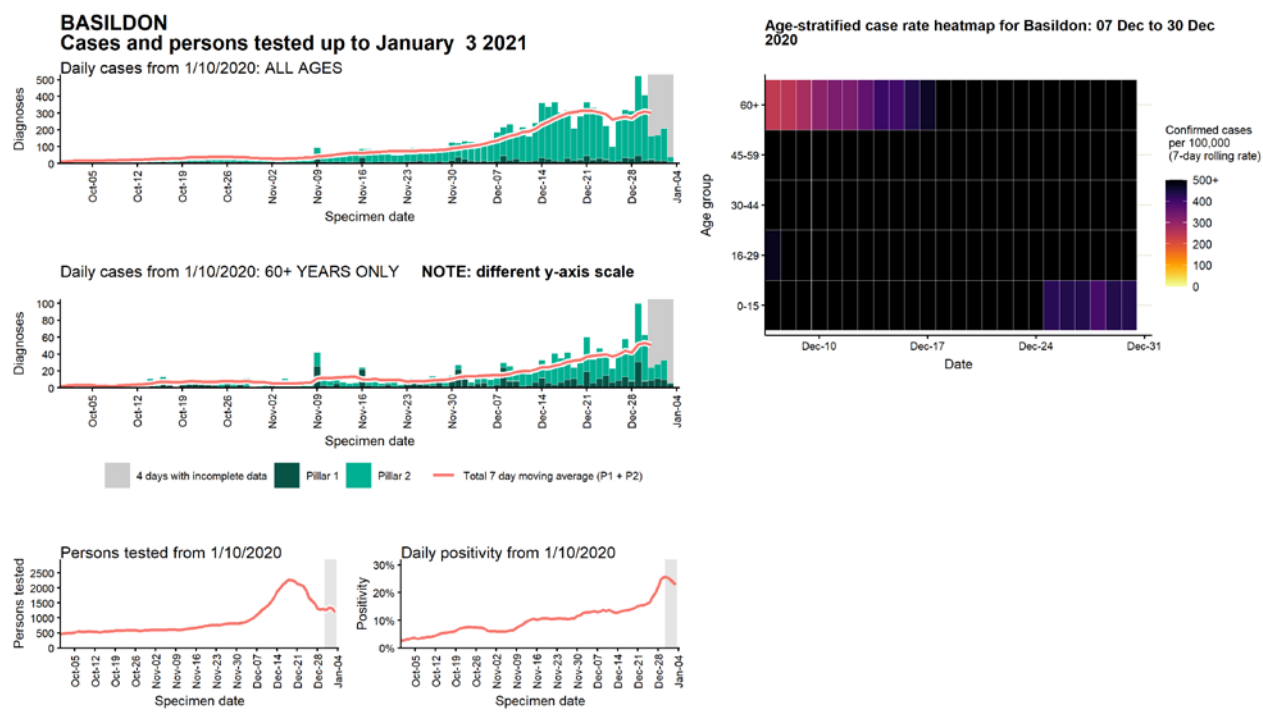
Data from SGSS. Produced by Outbreak Surveillance Team, PHE

Case numbers, testing numbers and positivity, Babergh : 01 Sep to 03 Jan 2021



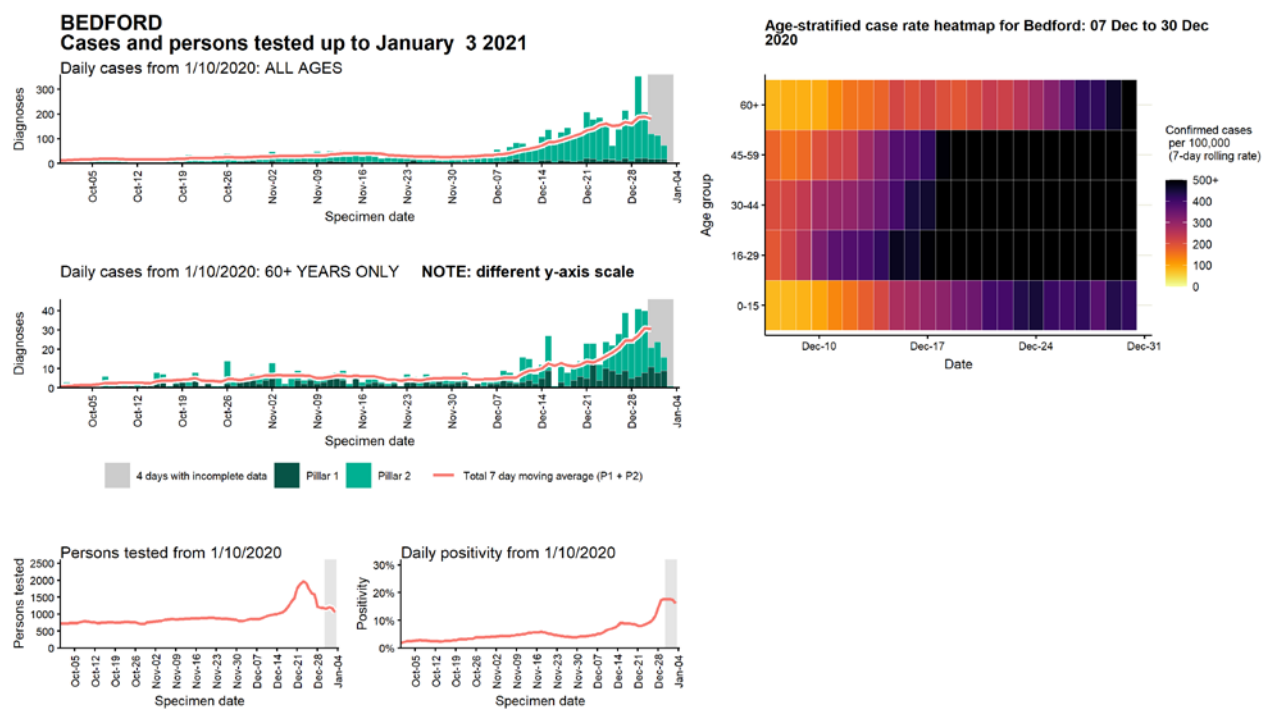
Data from SGSS. Produced by Outbreak Surveillance Team, PHE

Case numbers, testing numbers and positivity, Basildon : 01 Sep to 03 Jan 2021



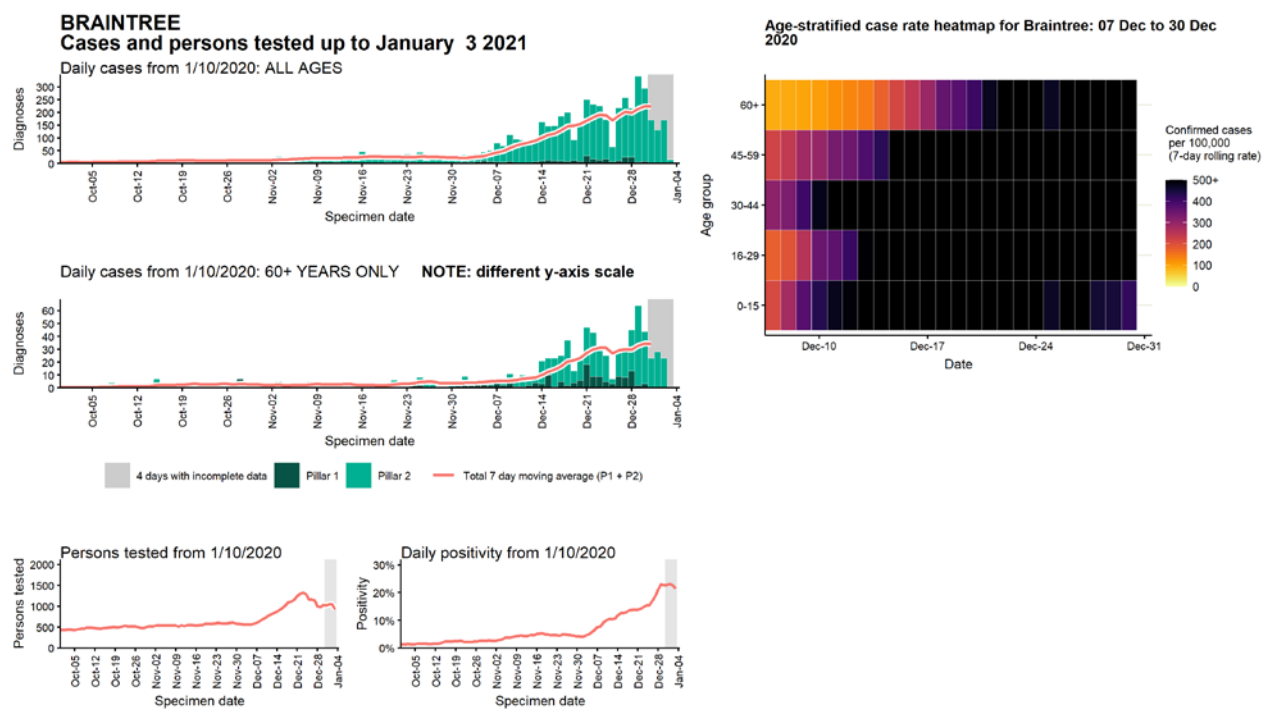
Data from SGSS. Produced by Outbreak Surveillance Team, PHE

Case numbers, testing numbers and positivity, Bedford : 01 Sep to 03 Jan 2021



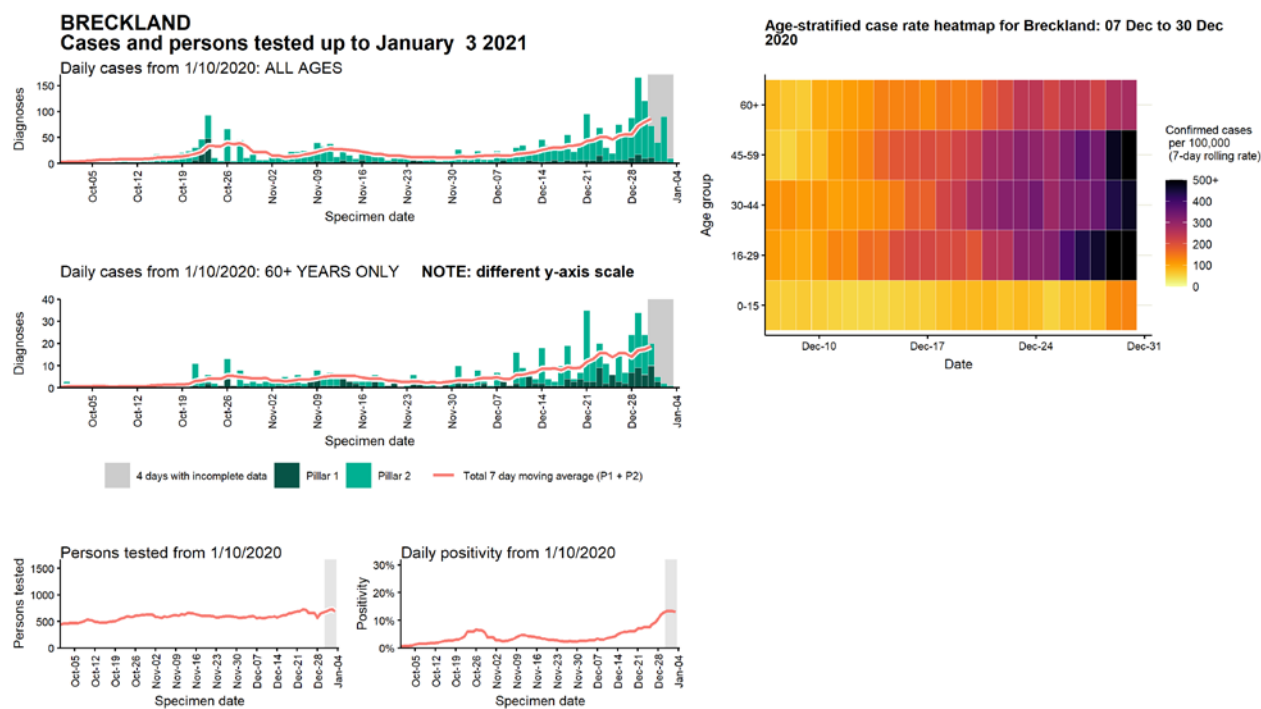
Data from SGSS. Produced by Outbreak Surveillance Team, PHE

Case numbers, testing numbers and positivity, Braintree : 01 Sep to 03 Jan 2021



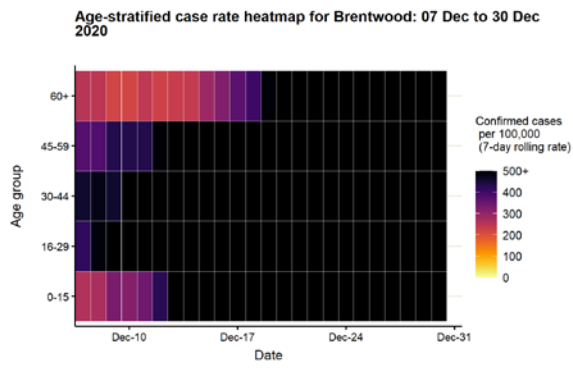
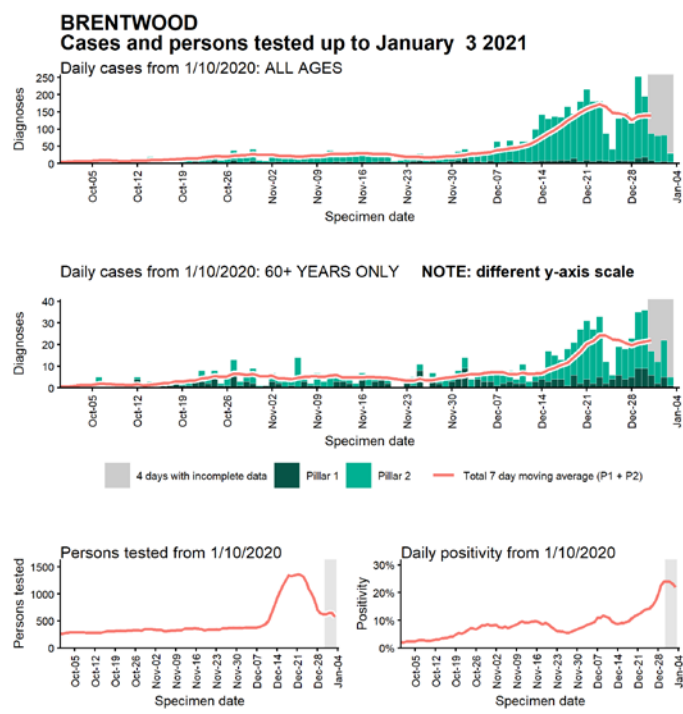
Data from SGSS. Produced by Outbreak Surveillance Team, PHE

Case numbers, testing numbers and positivity, Breckland : 01 Sep to 03 Jan 2021



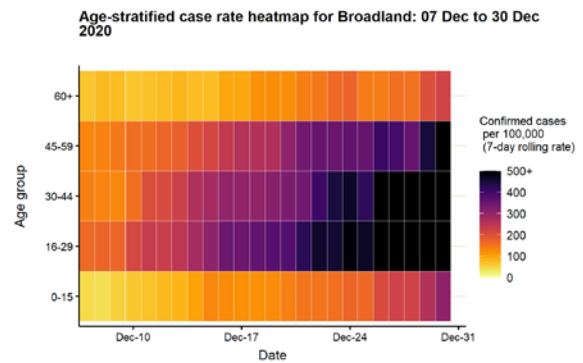
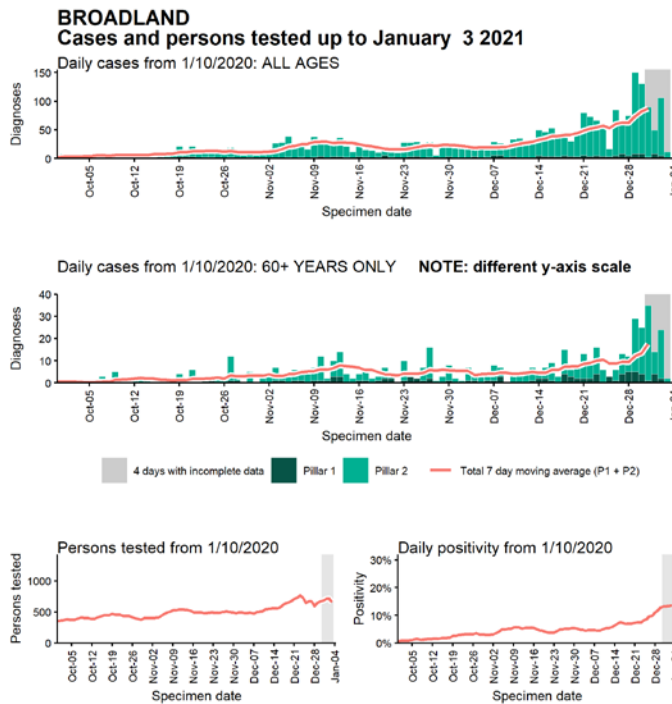
Data from SGSS. Produced by Outbreak Surveillance Team, PHE

Case numbers, testing numbers and positivity, Brentwood : 01 Sep to 03 Jan 2021



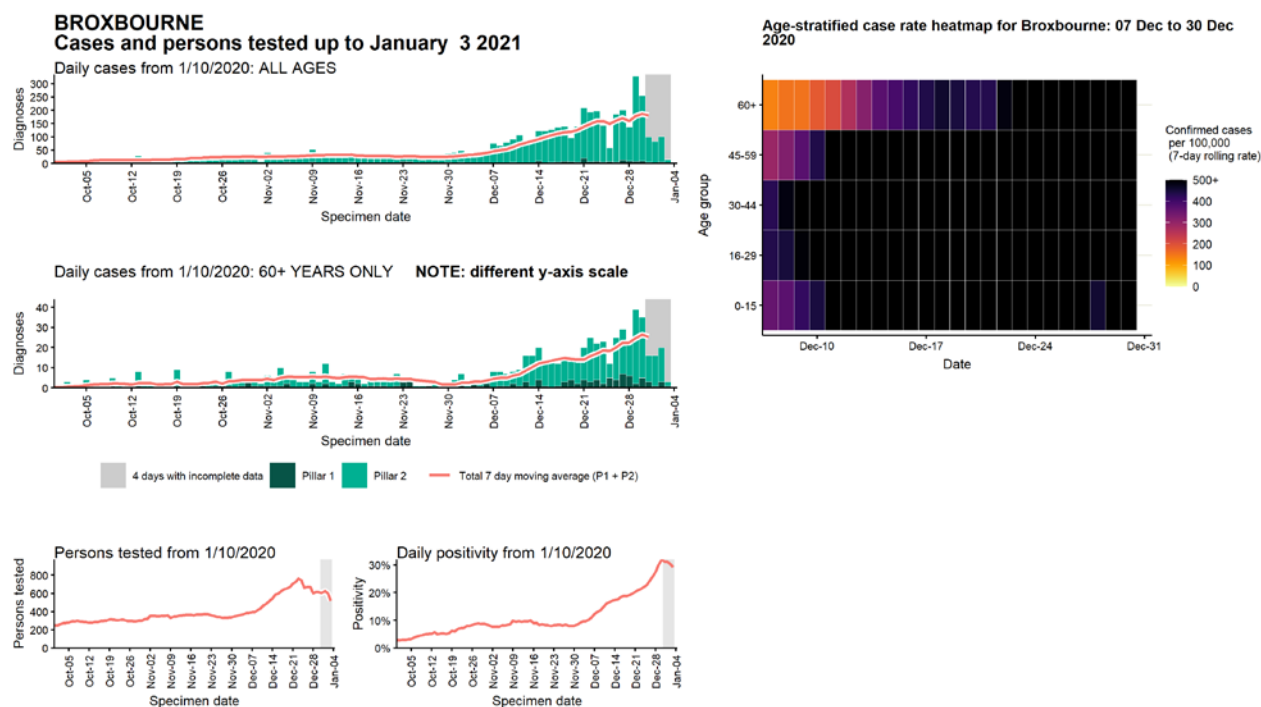
Data from SGSS. Produced by Outbreak Surveillance Team, PHE

Case numbers, testing numbers and positivity, Broadland : 01 Sep to 03 Jan 2021



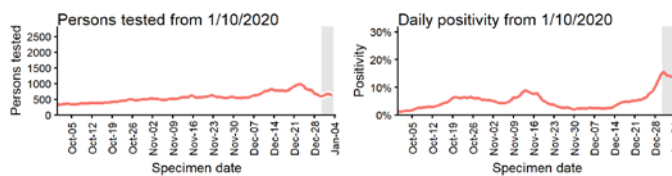
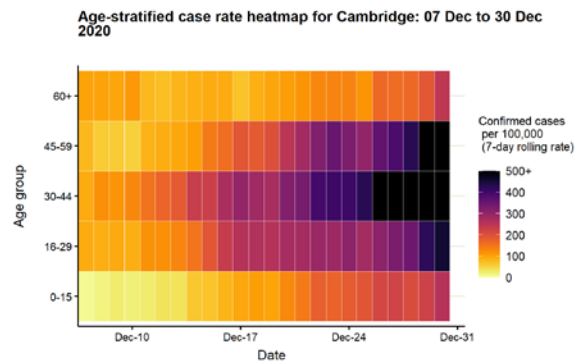
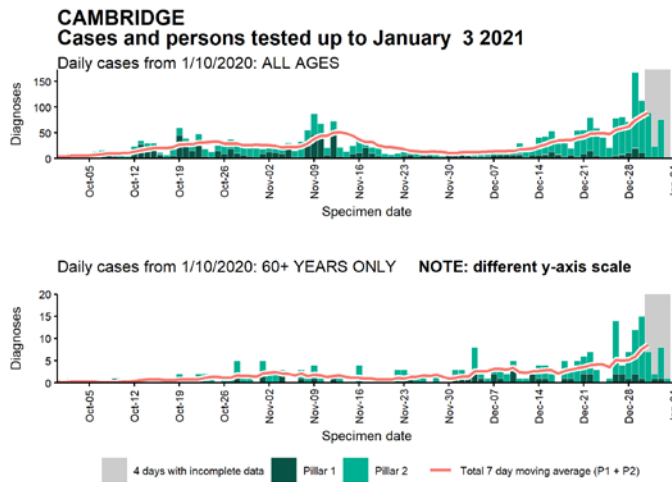
Data from SGSS. Produced by Outbreak Surveillance Team, PHE

Case numbers, testing numbers and positivity, Broxbourne : 01 Sep to 03 Jan 2021



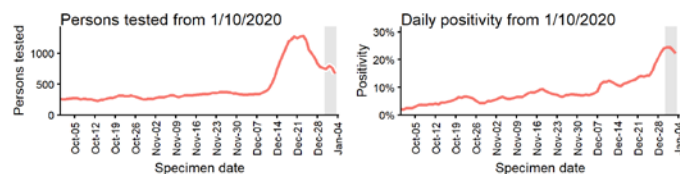
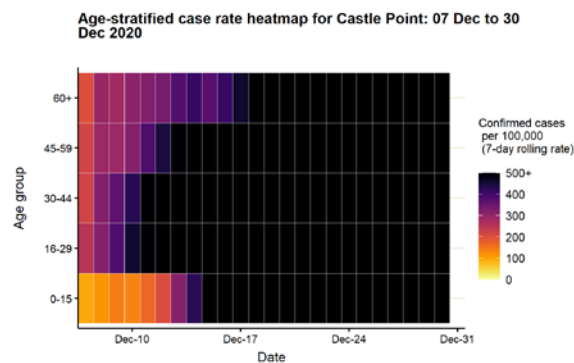
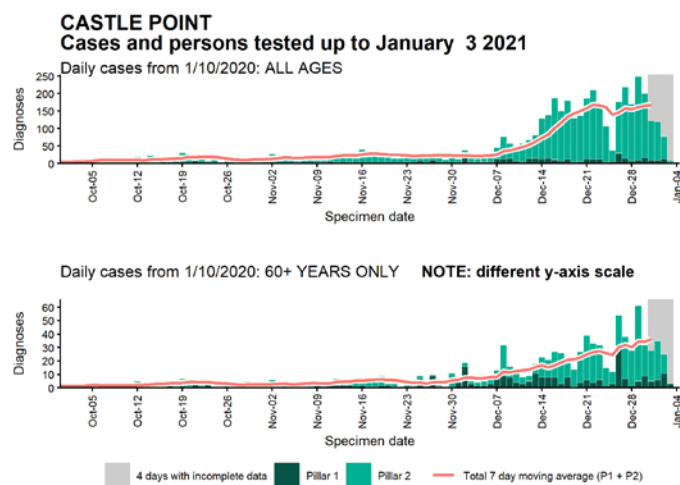
Data from SGSS. Produced by Outbreak Surveillance Team, PHE

Case numbers, testing numbers and positivity, Cambridge : 01 Sep to 03 Jan 2021



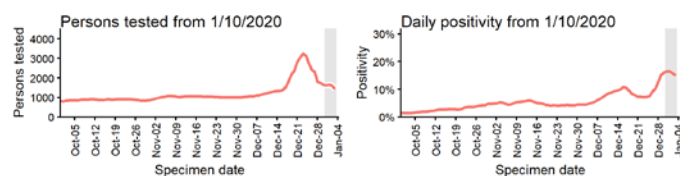
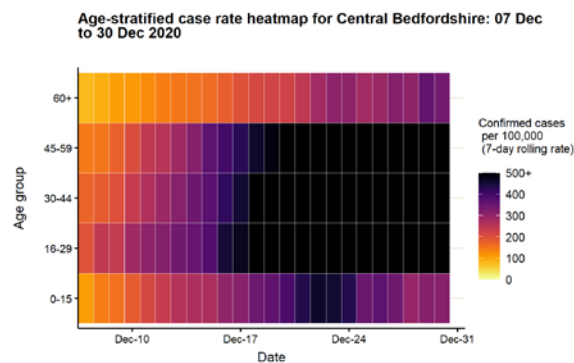
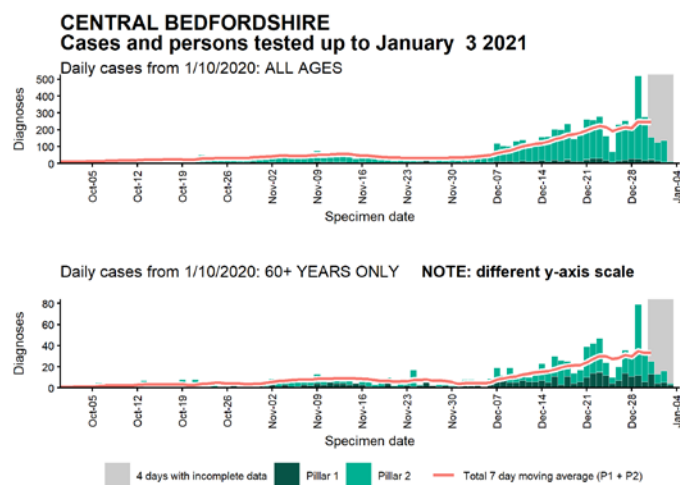
Data from SGSS. Produced by Outbreak Surveillance Team, PHE

Case numbers, testing numbers and positivity, Castle Point : 01 Sep to 03 Jan 2021



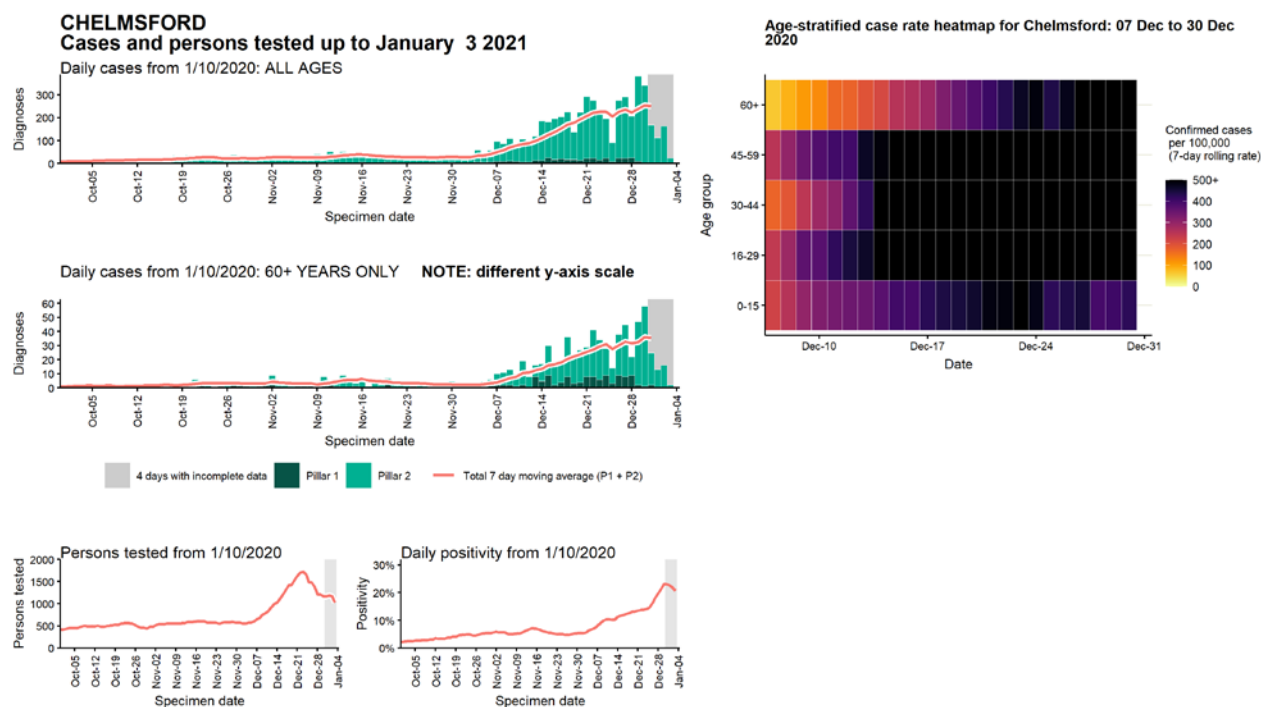
Data from SGSS. Produced by Outbreak Surveillance Team, PHE

Case numbers, testing numbers and positivity, Central Bedfordshire :
01 Sep to 03 Jan 2021



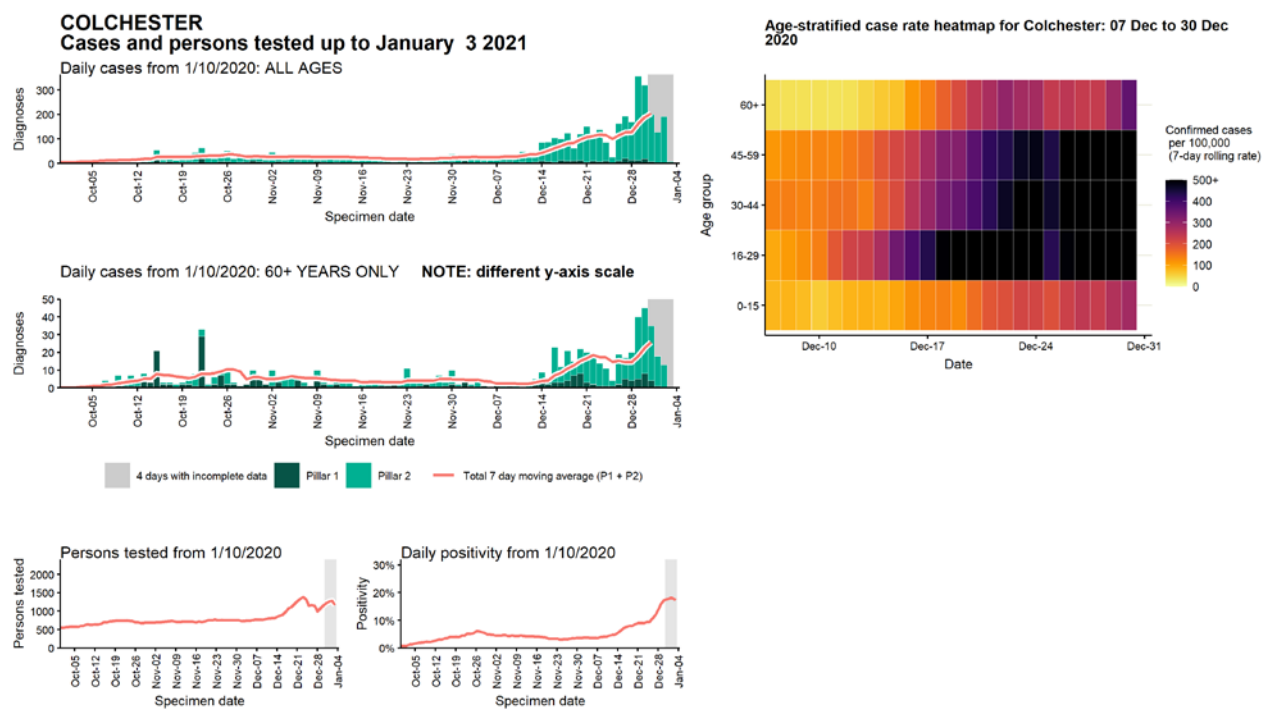
Data from SGSS. Produced by Outbreak Surveillance Team, PHE

Case numbers, testing numbers and positivity, Chelmsford : 01 Sep to 03 Jan 2021



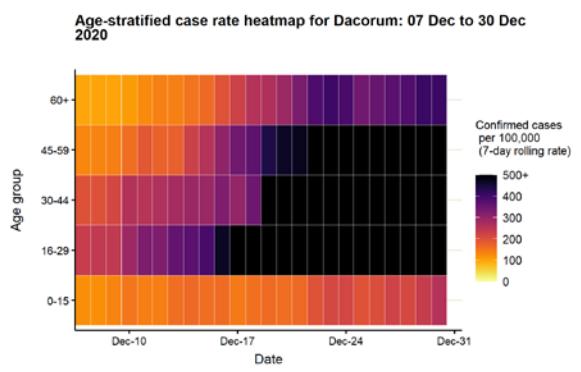
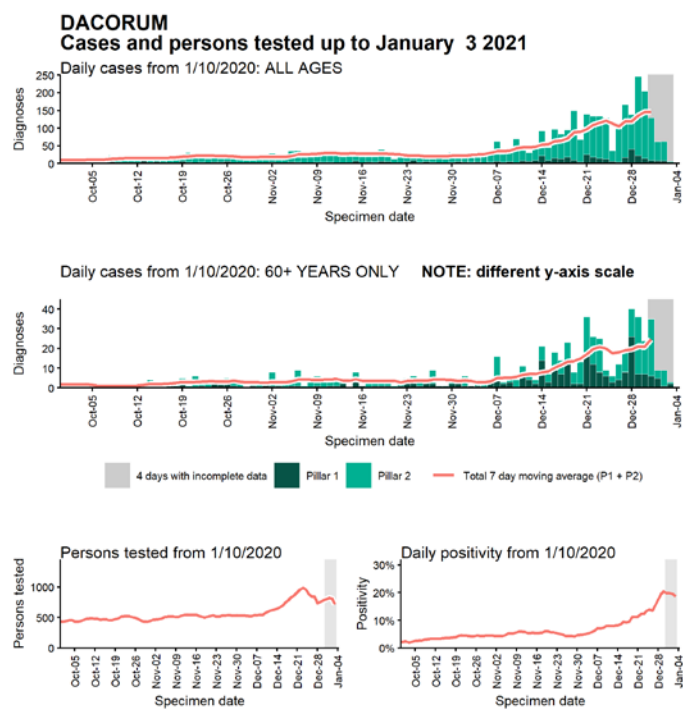
Data from SGSS. Produced by Outbreak Surveillance Team, PHE

Case numbers, testing numbers and positivity, Colchester : 01 Sep to 03 Jan 2021



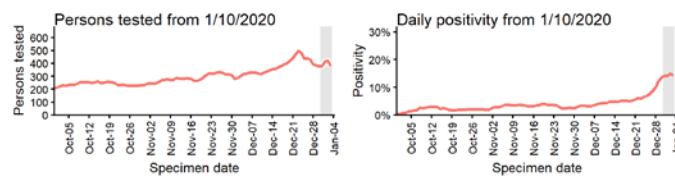
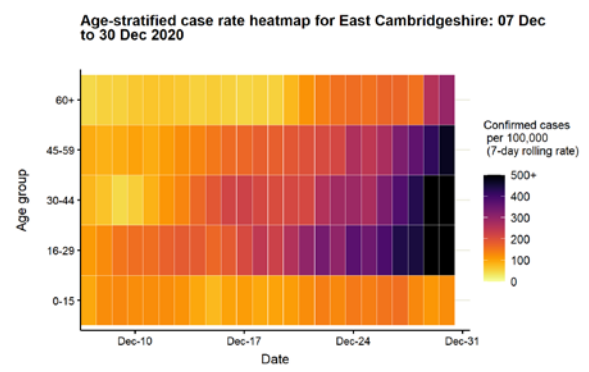
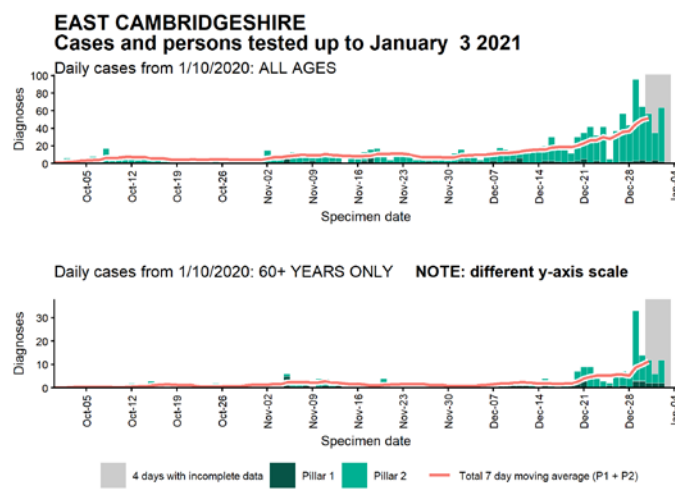
Data from SGSS. Produced by Outbreak Surveillance Team, PHE

Case numbers, testing numbers and positivity, Dacorum : 01 Sep to 03 Jan 2021



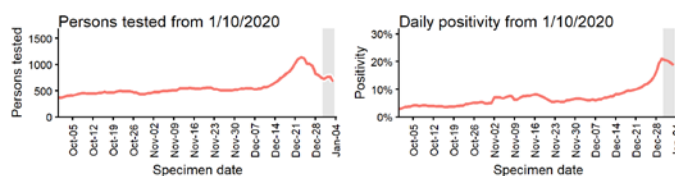
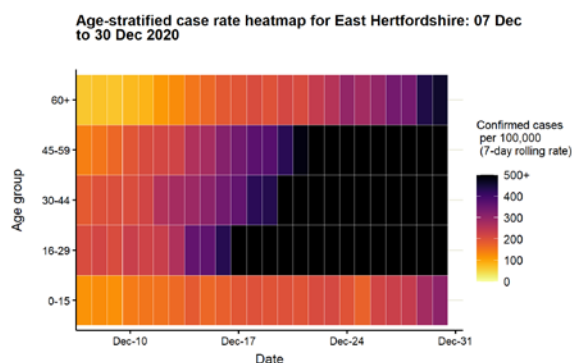
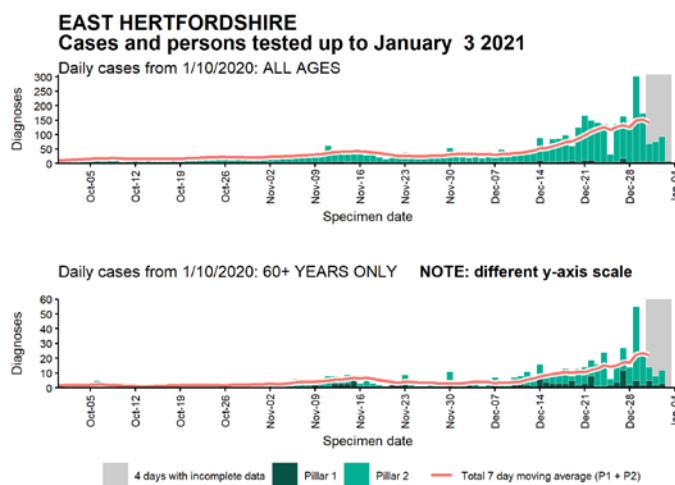
Data from SGSS. Produced by Outbreak Surveillance Team, PHE

Case numbers, testing numbers and positivity, East Cambridgeshire :
01 Sep to 03 Jan 2021



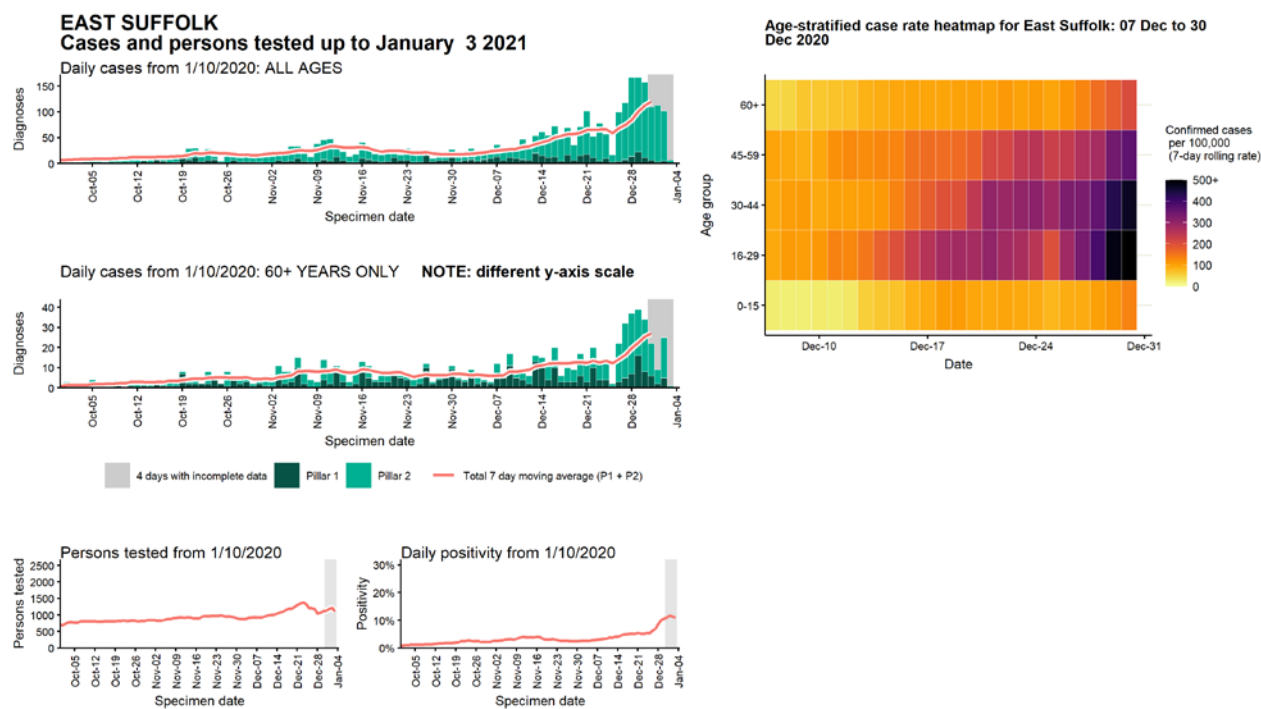
Data from SGSS. Produced by Outbreak Surveillance Team, PHE

Case numbers, testing numbers and positivity, East Hertfordshire : 01 Sep to 03 Jan 2021



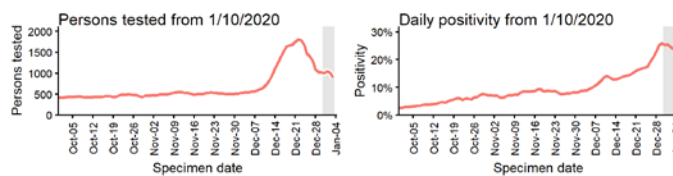
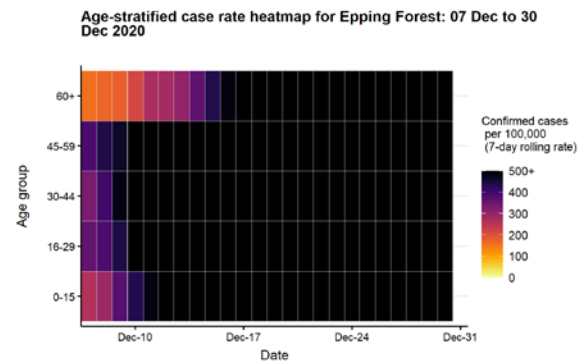
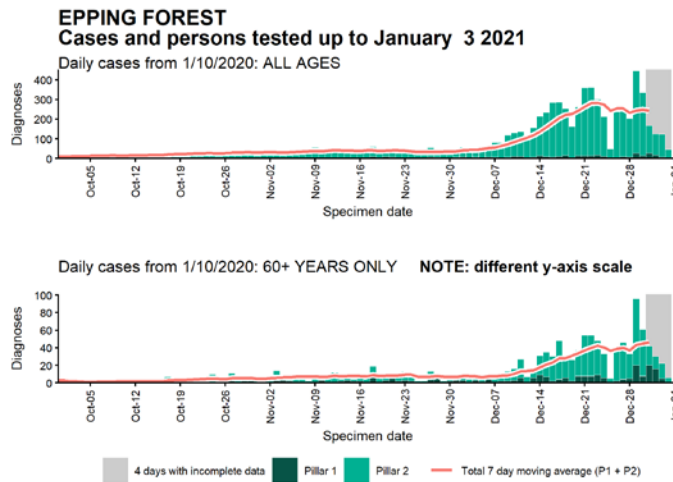
Data from SGSS. Produced by Outbreak Surveillance Team, PHE

Case numbers, testing numbers and positivity, East Suffolk : 01 Sep to 03 Jan 2021



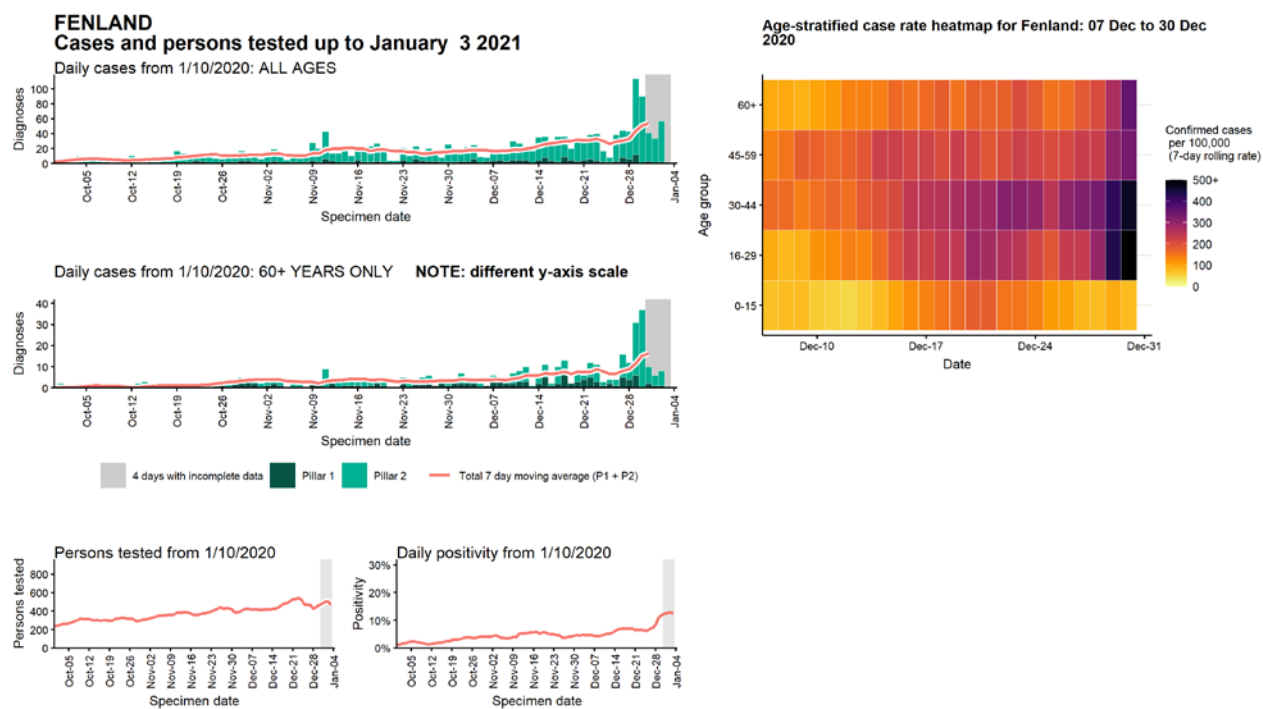
Data from SGSS. Produced by Outbreak Surveillance Team, PHE

Case numbers, testing numbers and positivity, Epping Forest : 01 Sep to 03 Jan 2021



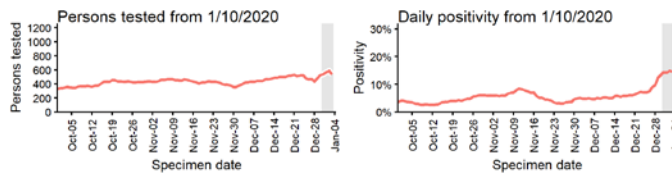
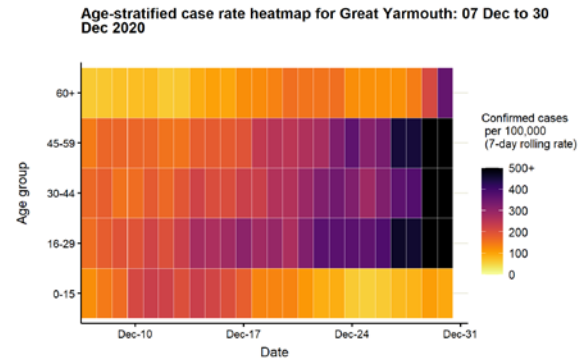
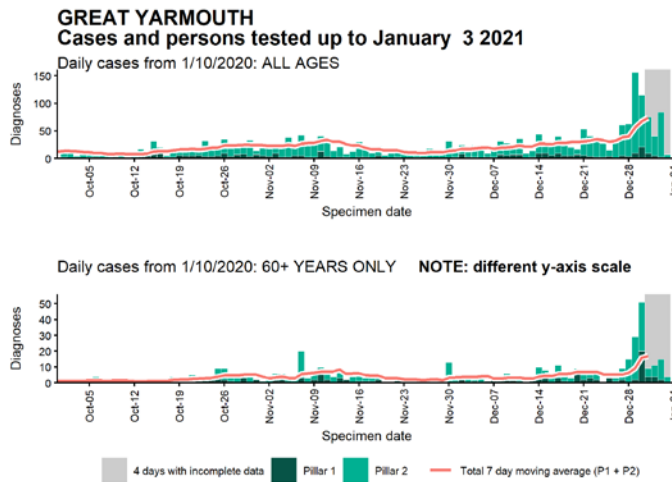
Data from SGSS. Produced by Outbreak Surveillance Team, PHE

Case numbers, testing numbers and positivity, Fenland : 01 Sep to 03 Jan 2021



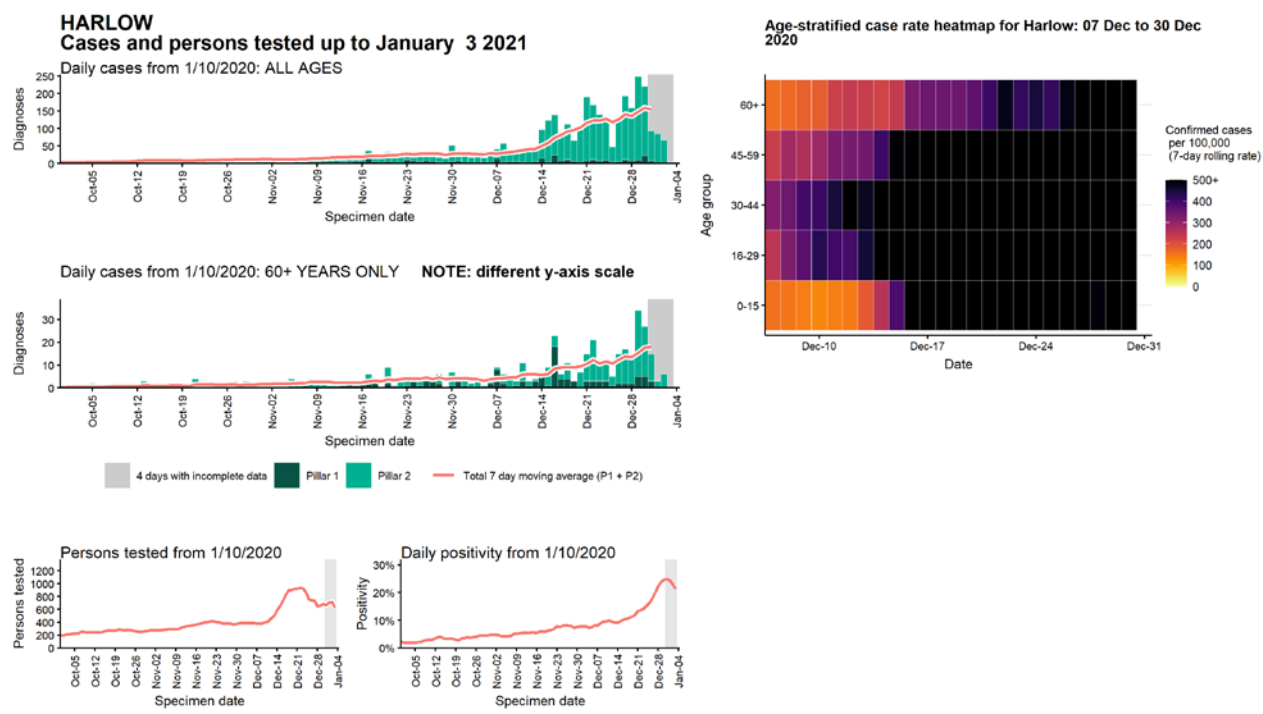
Data from SGSS. Produced by Outbreak Surveillance Team, PHE

Case numbers, testing numbers and positivity, Great Yarmouth : 01 Sep to 03 Jan 2021



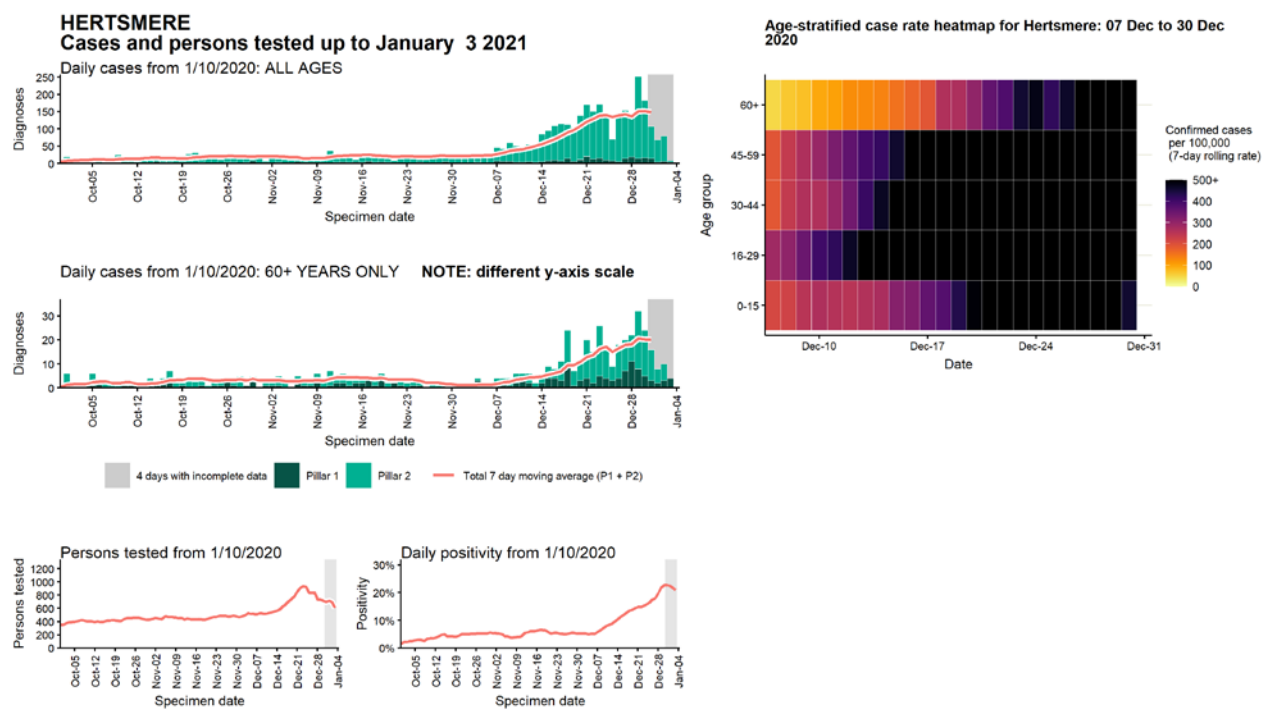
Data from SGSS. Produced by Outbreak Surveillance Team, PHE

Case numbers, testing numbers and positivity, Harlow : 01 Sep to 03 Jan 2021



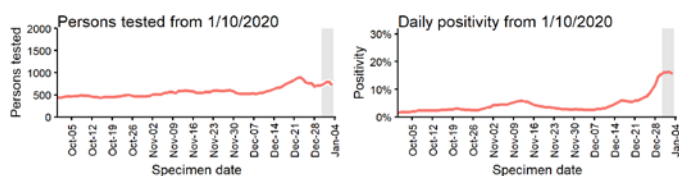
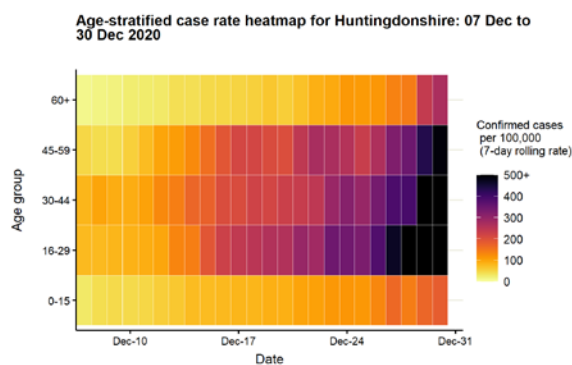
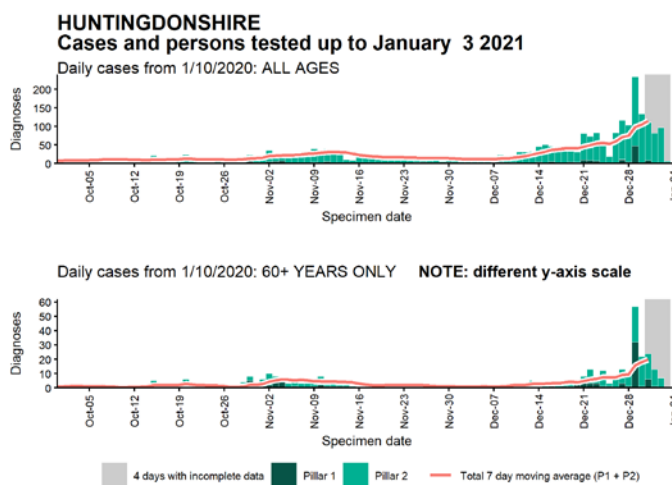
Data from SGSS. Produced by Outbreak Surveillance Team, PHE

Case numbers, testing numbers and positivity, Hertsmere : 01 Sep to 03 Jan 2021



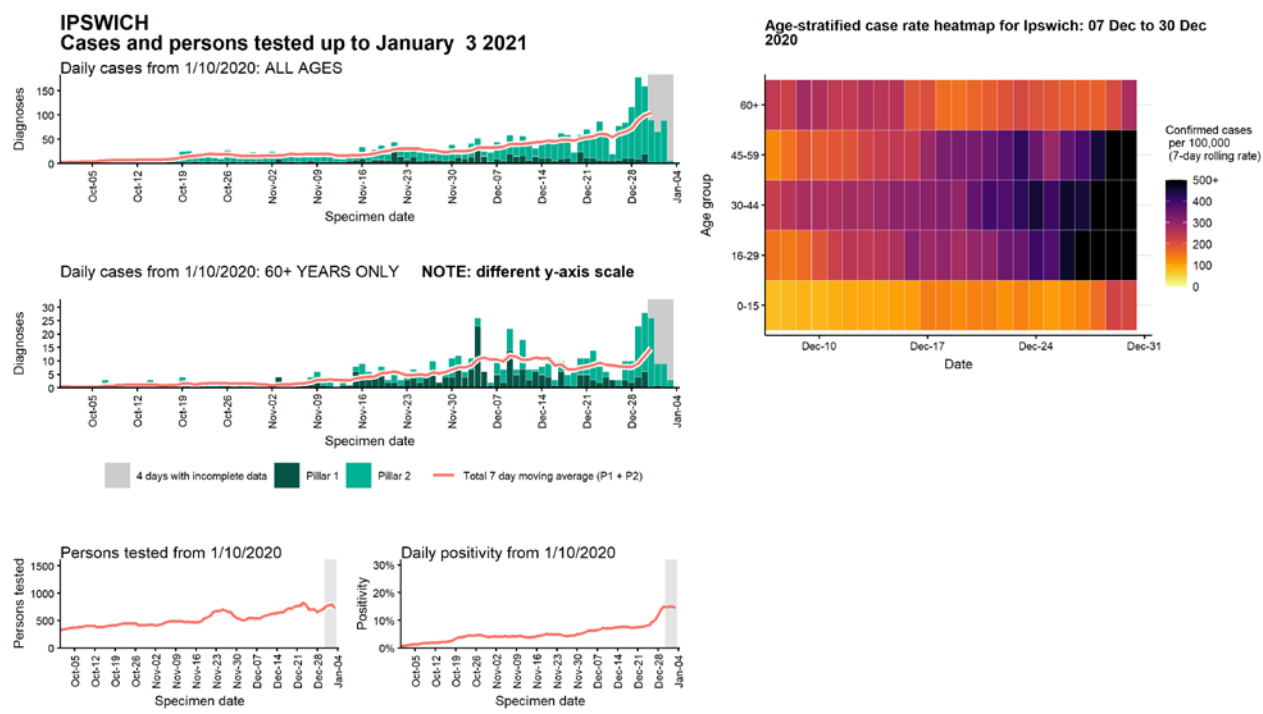
Data from SGSS. Produced by Outbreak Surveillance Team, PHE

Case numbers, testing numbers and positivity, Huntingdonshire : 01 Sep to 03 Jan 2021



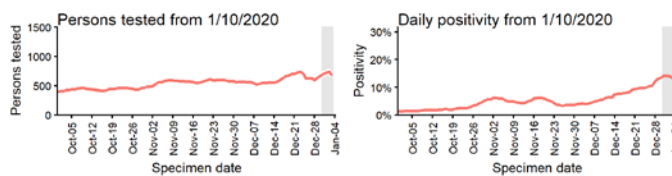
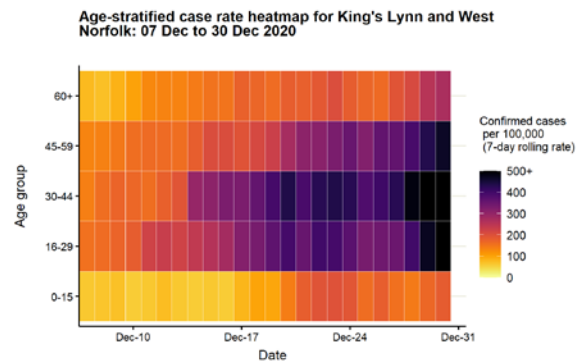
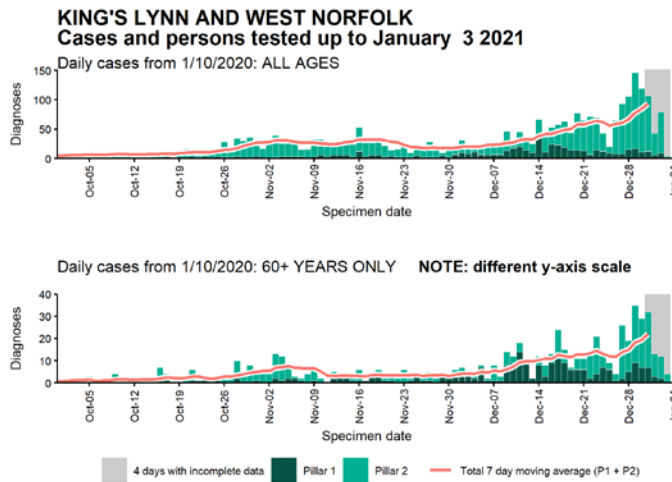
Data from SGSS. Produced by Outbreak Surveillance Team, PHE

Case numbers, testing numbers and positivity, Ipswich : 01 Sep to 03 Jan 2021



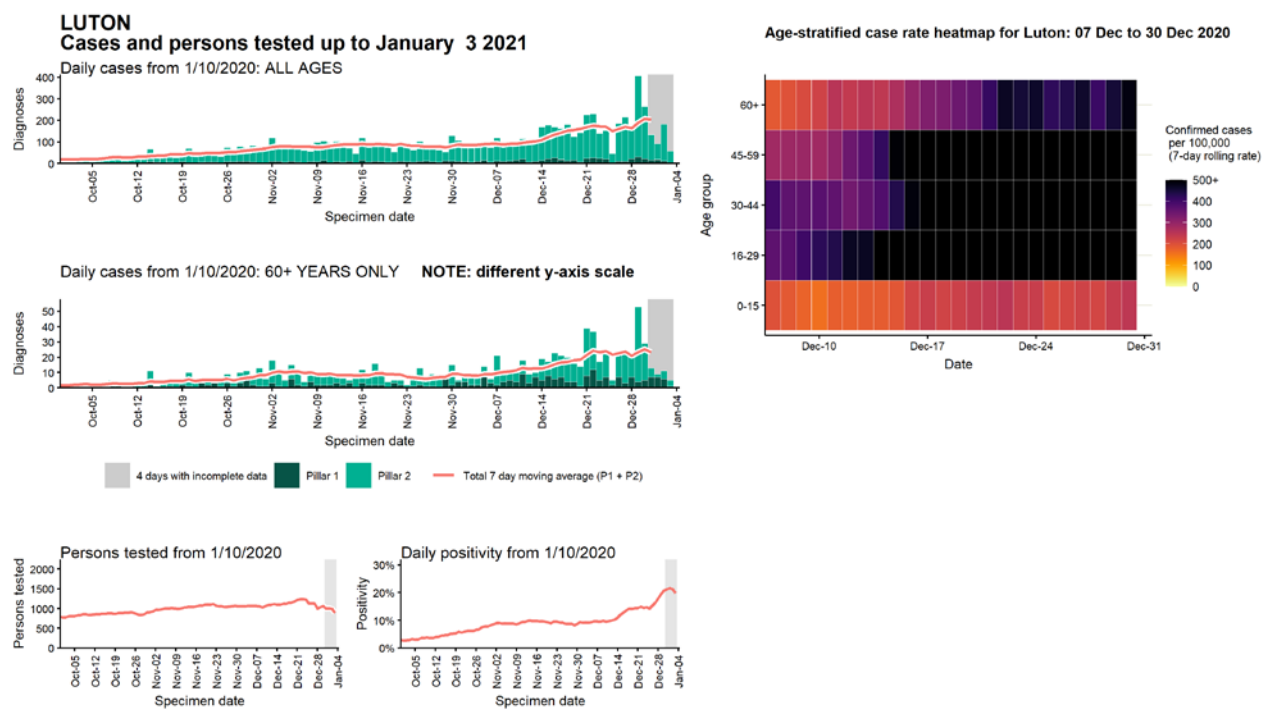
Data from SGSS. Produced by Outbreak Surveillance Team, PHE

Case numbers, testing numbers and positivity, King's Lynn and West Norfolk : 01 Sep to 03 Jan 2021



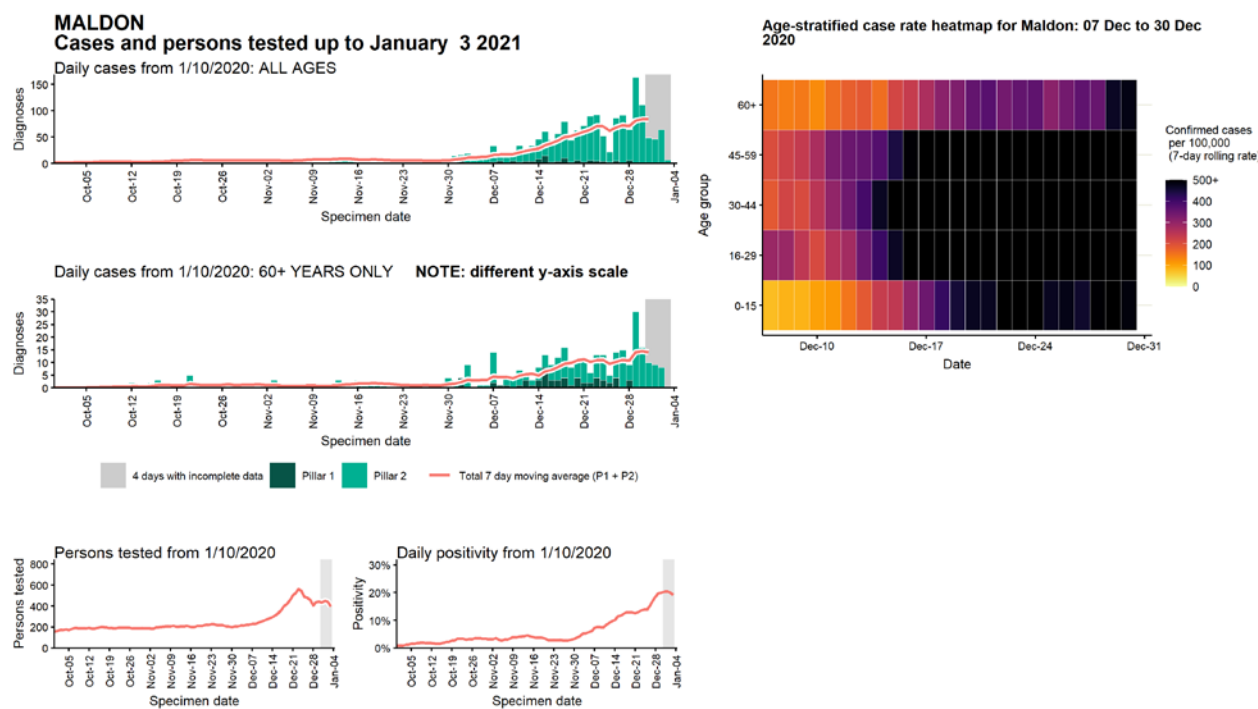
Data from SGSS. Produced by Outbreak Surveillance Team, PHE

Case numbers, testing numbers and positivity, Luton : 01 Sep to 03 Jan 2021



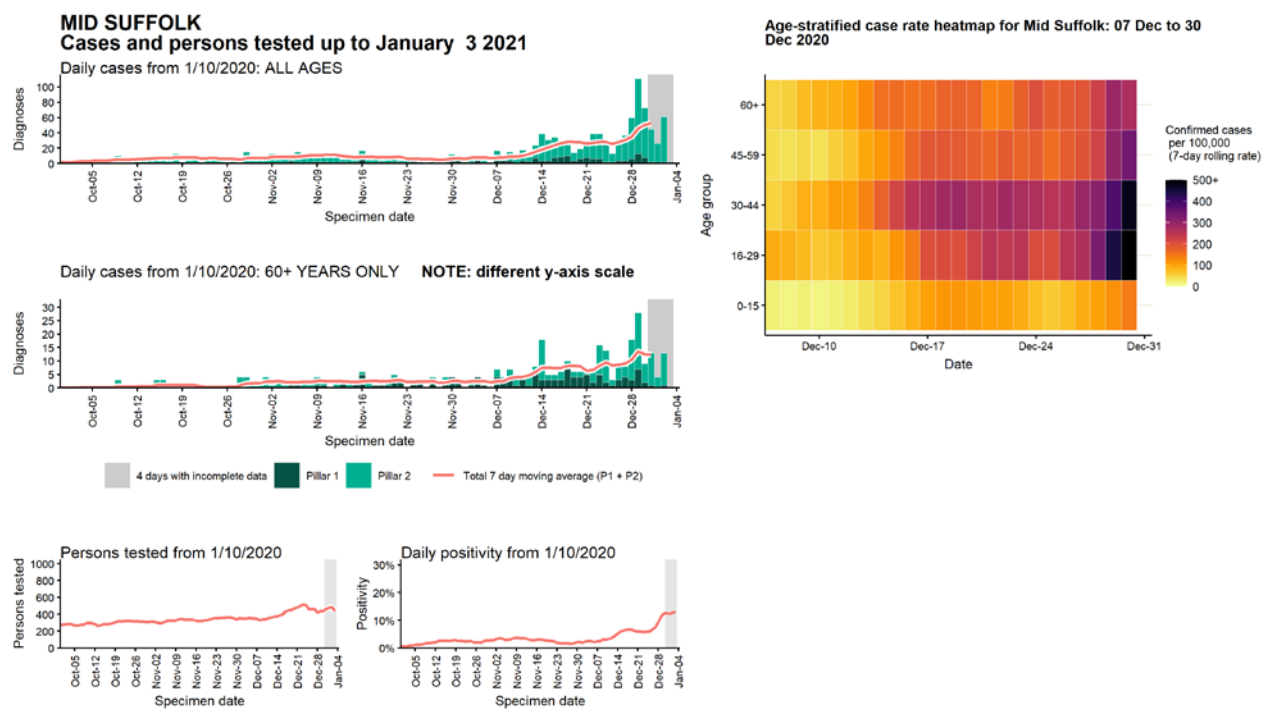
Data from SGSS. Produced by Outbreak Surveillance Team, PHE

Case numbers, testing numbers and positivity, Maldon : 01 Sep to 03 Jan 2021



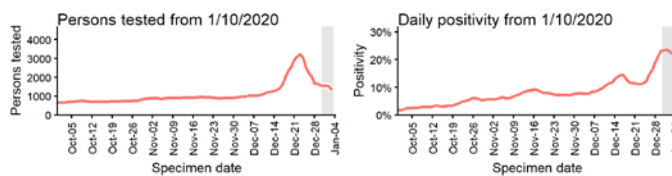
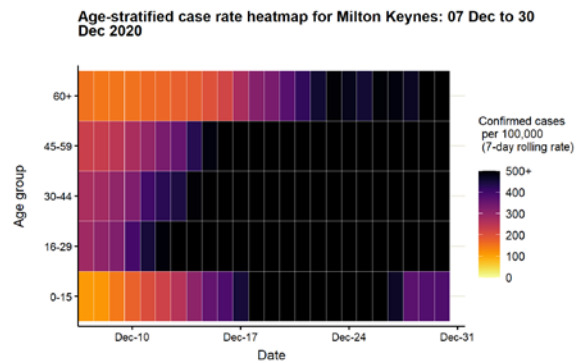
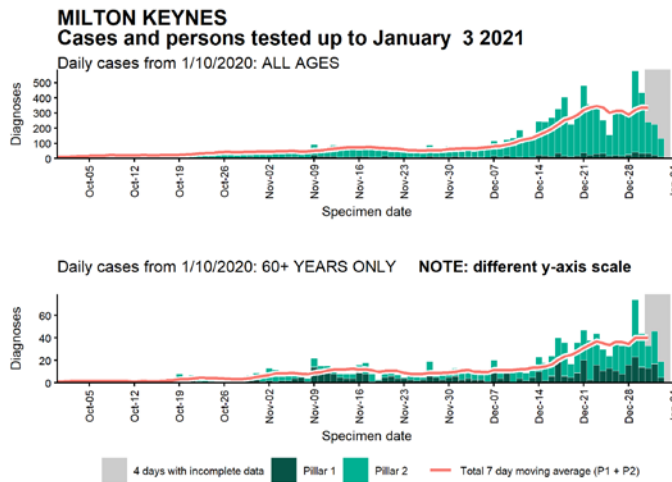
Data from SGSS. Produced by Outbreak Surveillance Team, PHE

Case numbers, testing numbers and positivity, Mid Suffolk : 01 Sep to 03 Jan 2021



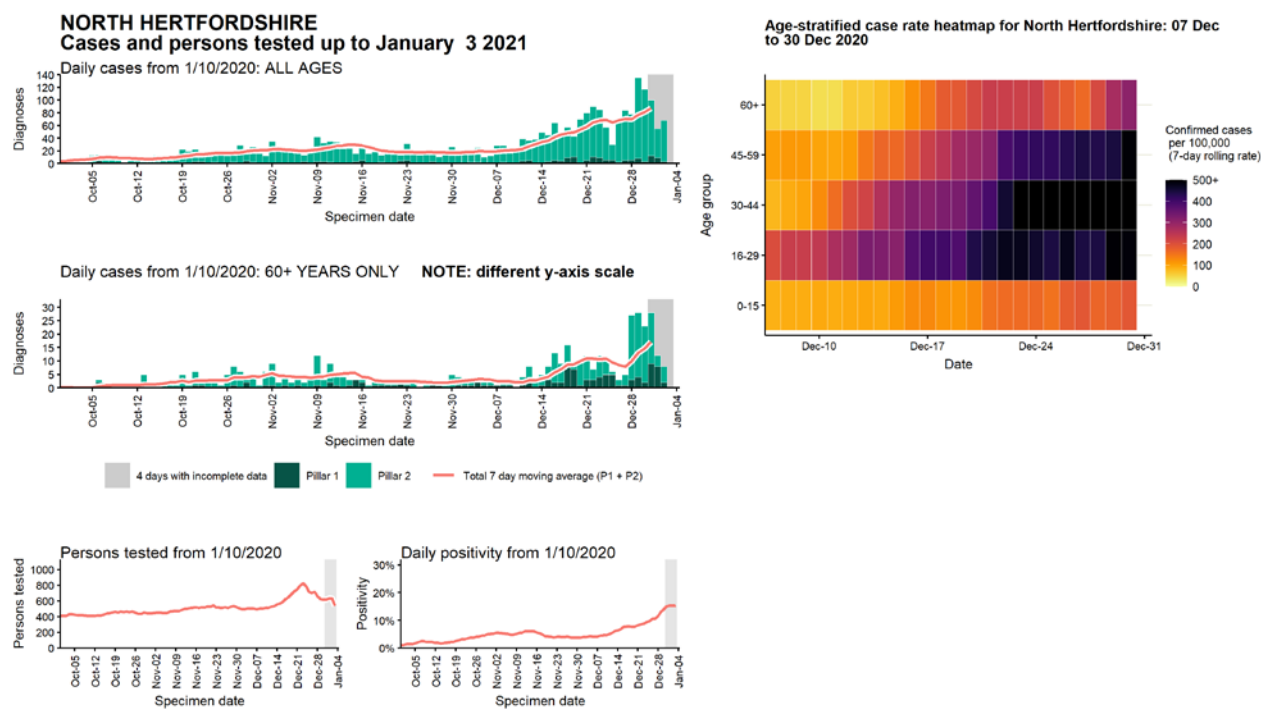
Data from SGSS. Produced by Outbreak Surveillance Team, PHE

Case numbers, testing numbers and positivity, Milton Keynes : 01 Sep to 03 Jan 2021

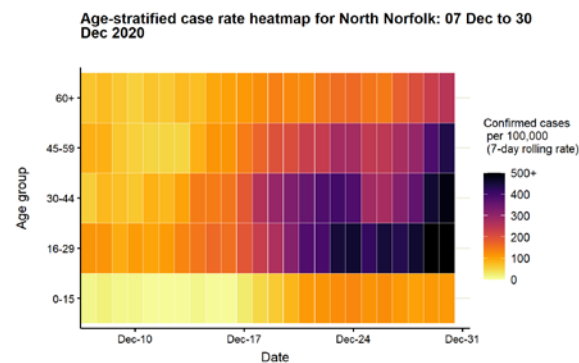
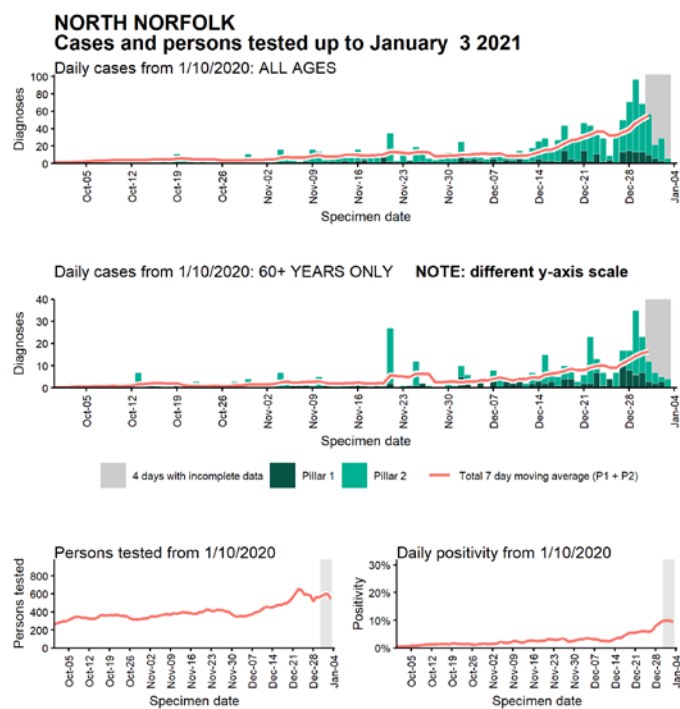


Data from SGSS. Produced by Outbreak Surveillance Team, PHE

Case numbers, testing numbers and positivity, North Hertfordshire : 01 Sep to 03 Jan 2021

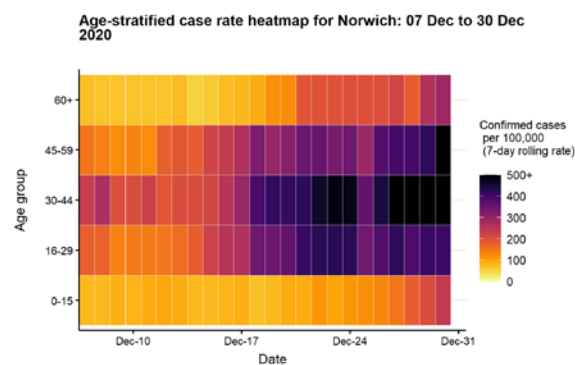
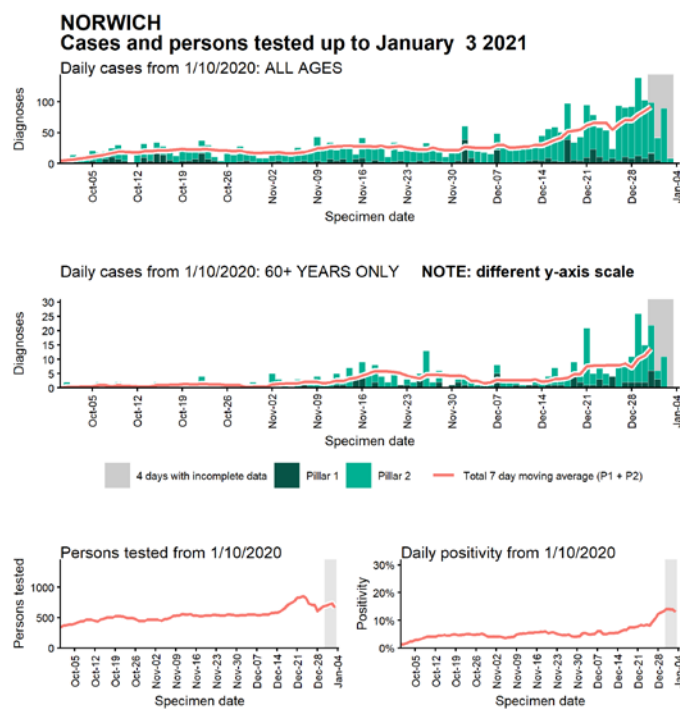


Case numbers, testing numbers and positivity, North Norfolk : 01 Sep to 03 Jan 2021



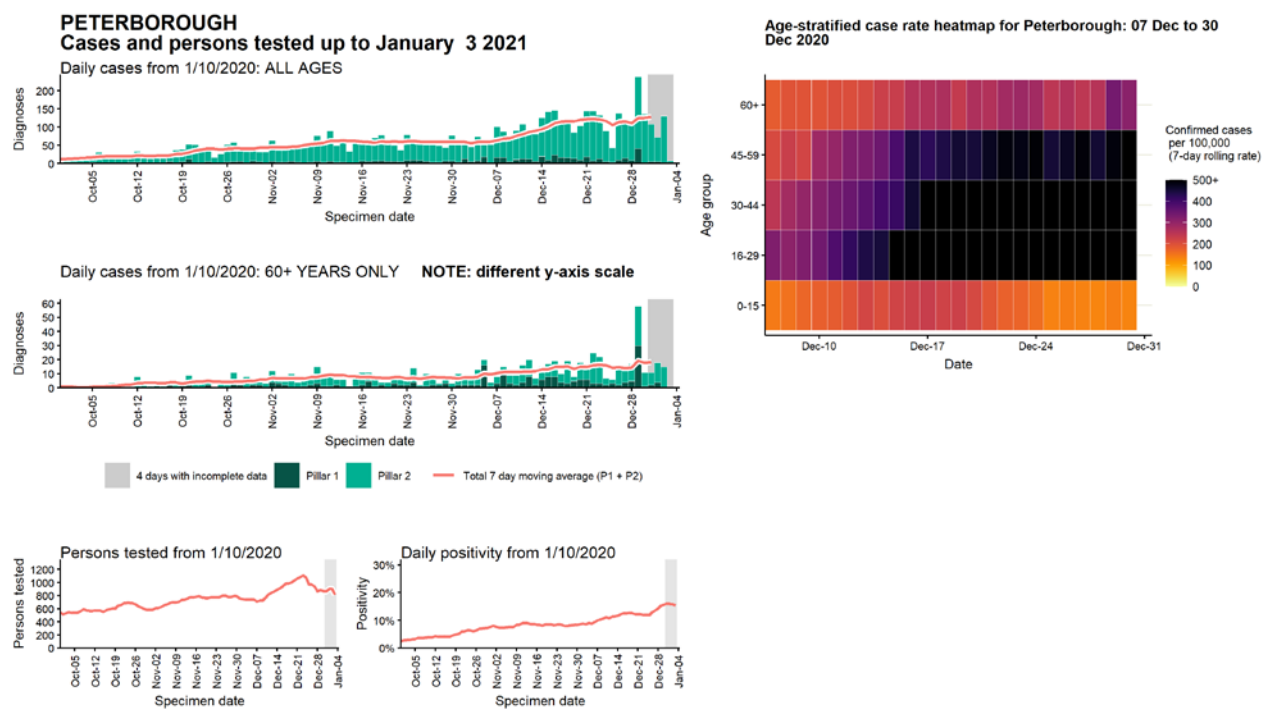
Data from SGSS. Produced by Outbreak Surveillance Team, PHE

Case numbers, testing numbers and positivity, Norwich : 01 Sep to 03 Jan 2021



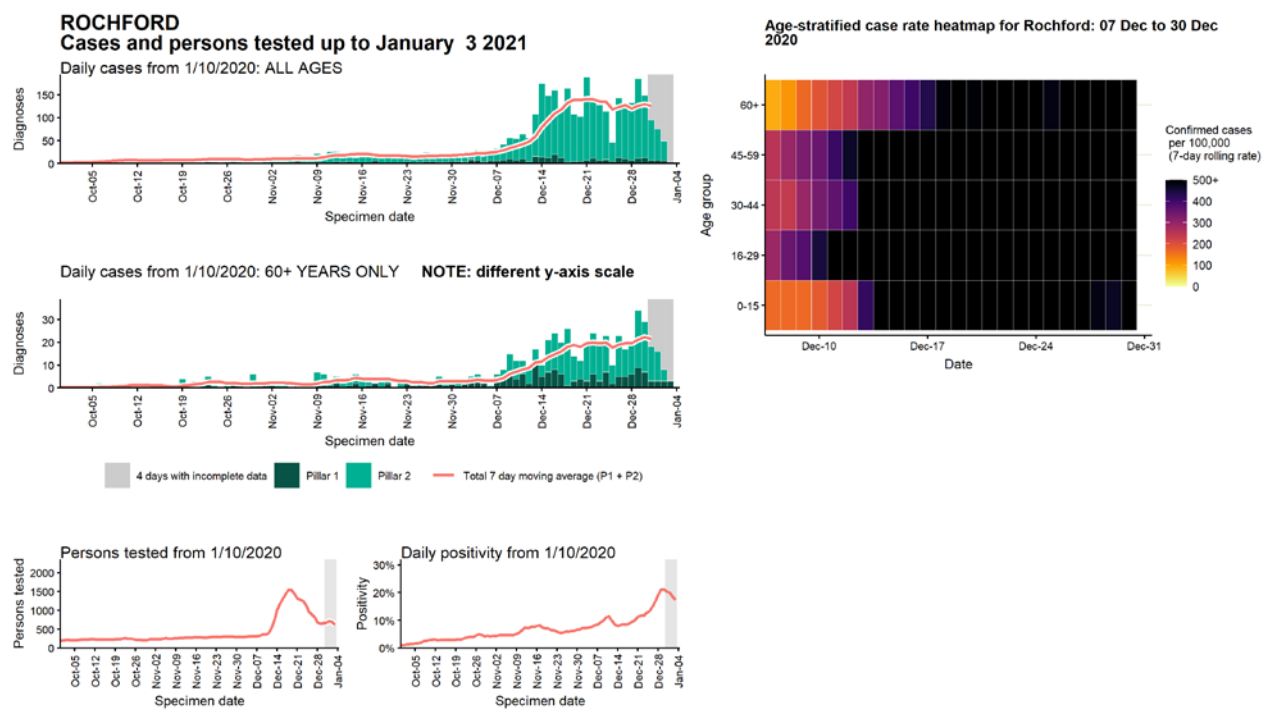
Data from SGSS. Produced by Outbreak Surveillance Team, PHE

Case numbers, testing numbers and positivity, Peterborough : 01 Sep to 03 Jan 2021



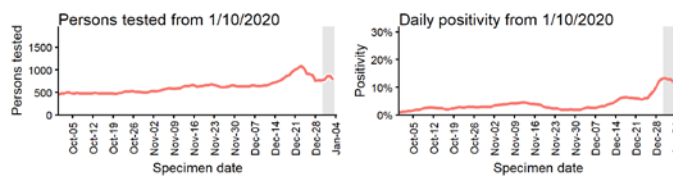
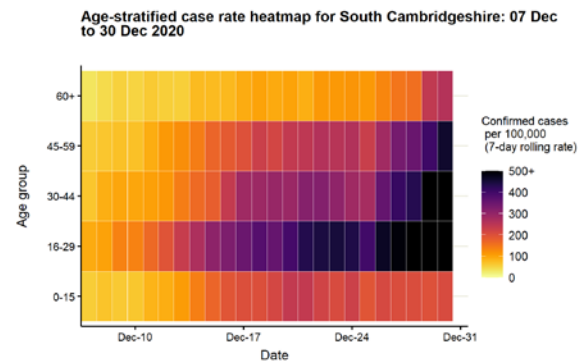
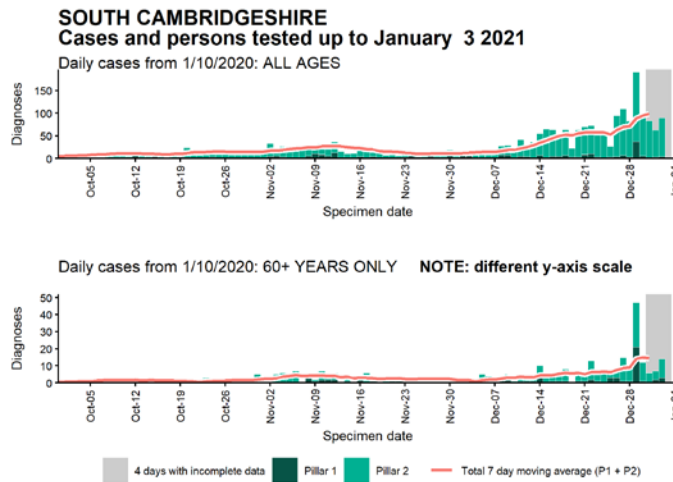
Data from SGSS. Produced by Outbreak Surveillance Team, PHE

Case numbers, testing numbers and positivity, Rochford : 01 Sep to 03 Jan 2021



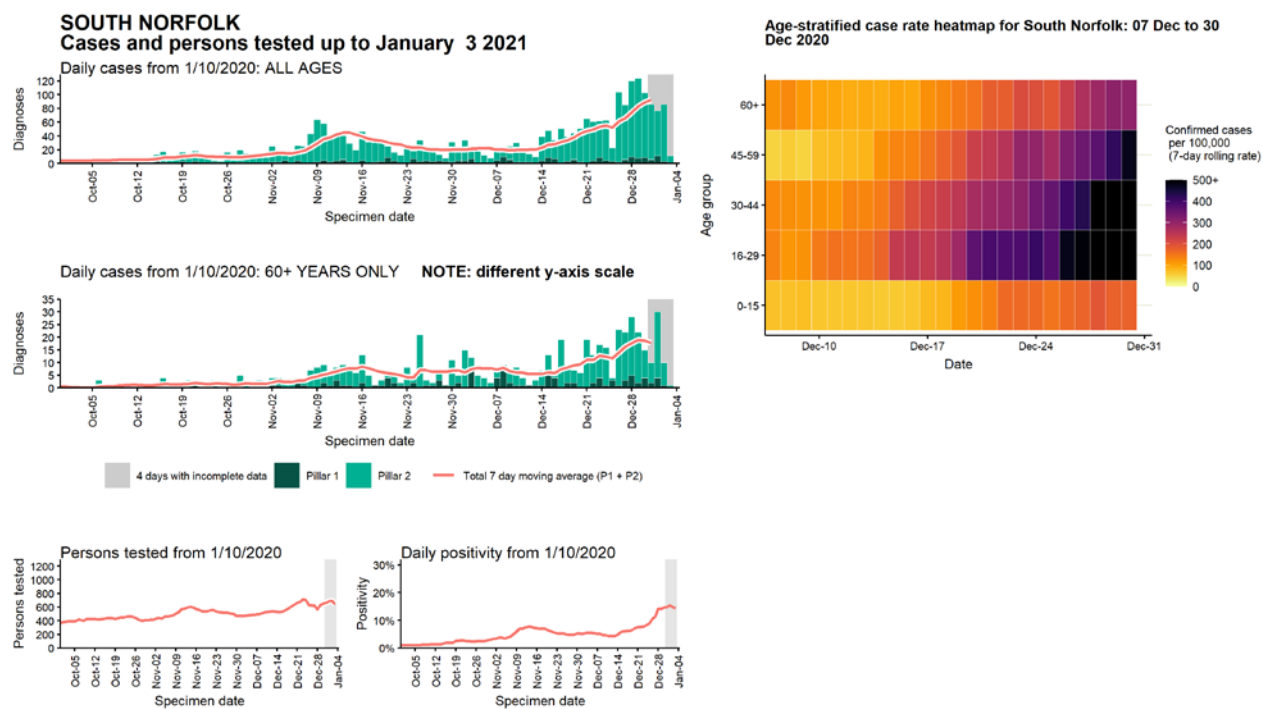
Data from SGSS. Produced by Outbreak Surveillance Team, PHE

Case numbers, testing numbers and positivity, South Cambridgeshire : 01 Sep to 03 Jan 2021



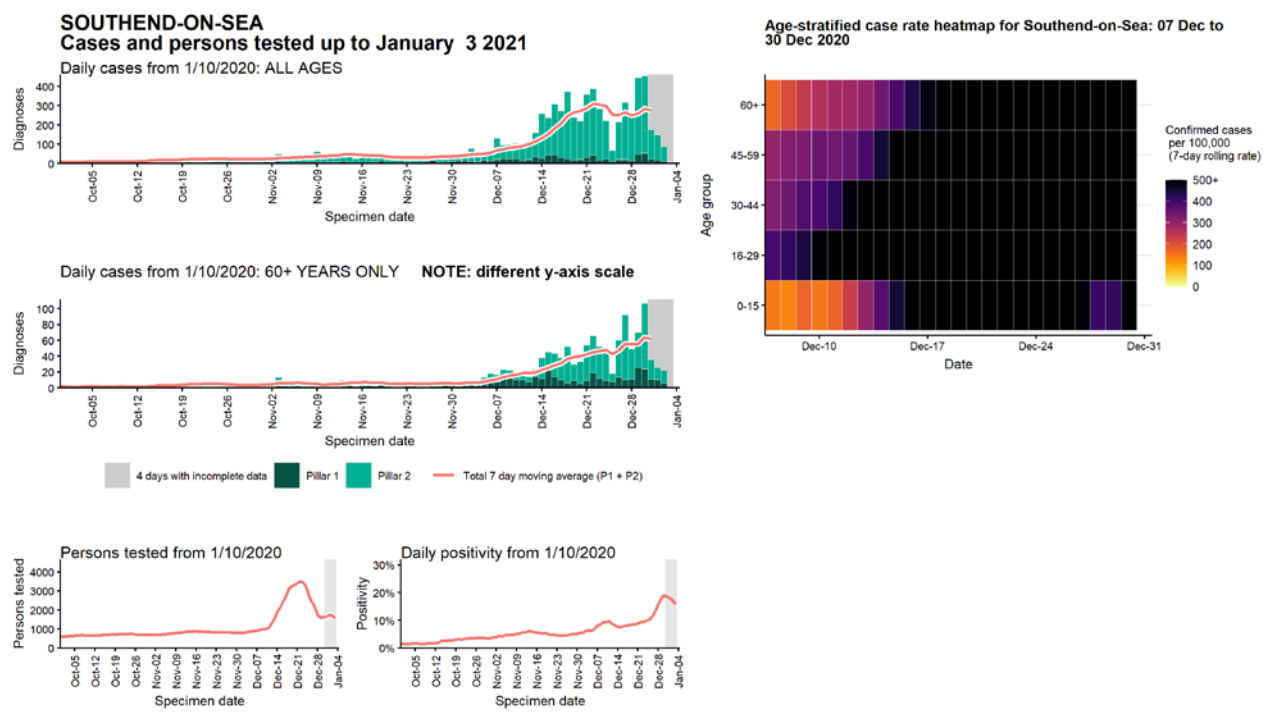
Data from SGSS. Produced by Outbreak Surveillance Team, PHE

Case numbers, testing numbers and positivity, South Norfolk : 01 Sep to 03 Jan 2021



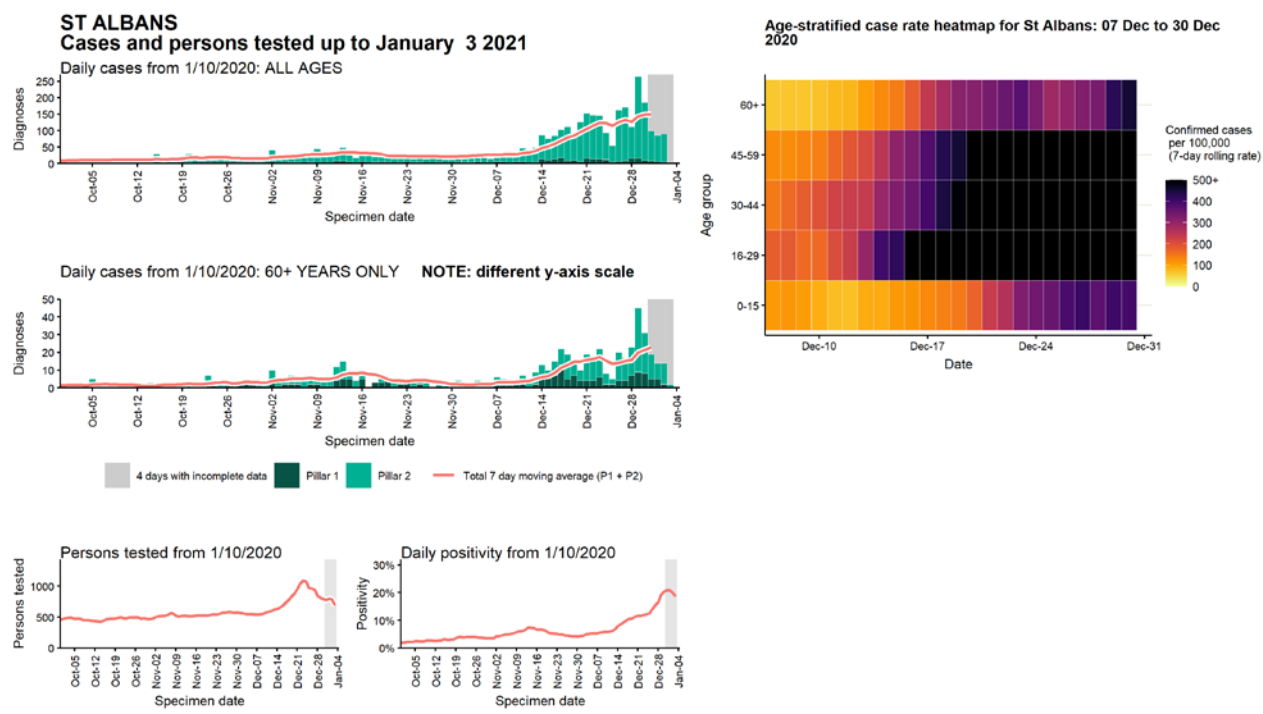
Data from SGSS. Produced by Outbreak Surveillance Team, PHE

Case numbers, testing numbers and positivity, Southend-on-Sea : 01 Sep to 03 Jan 2021



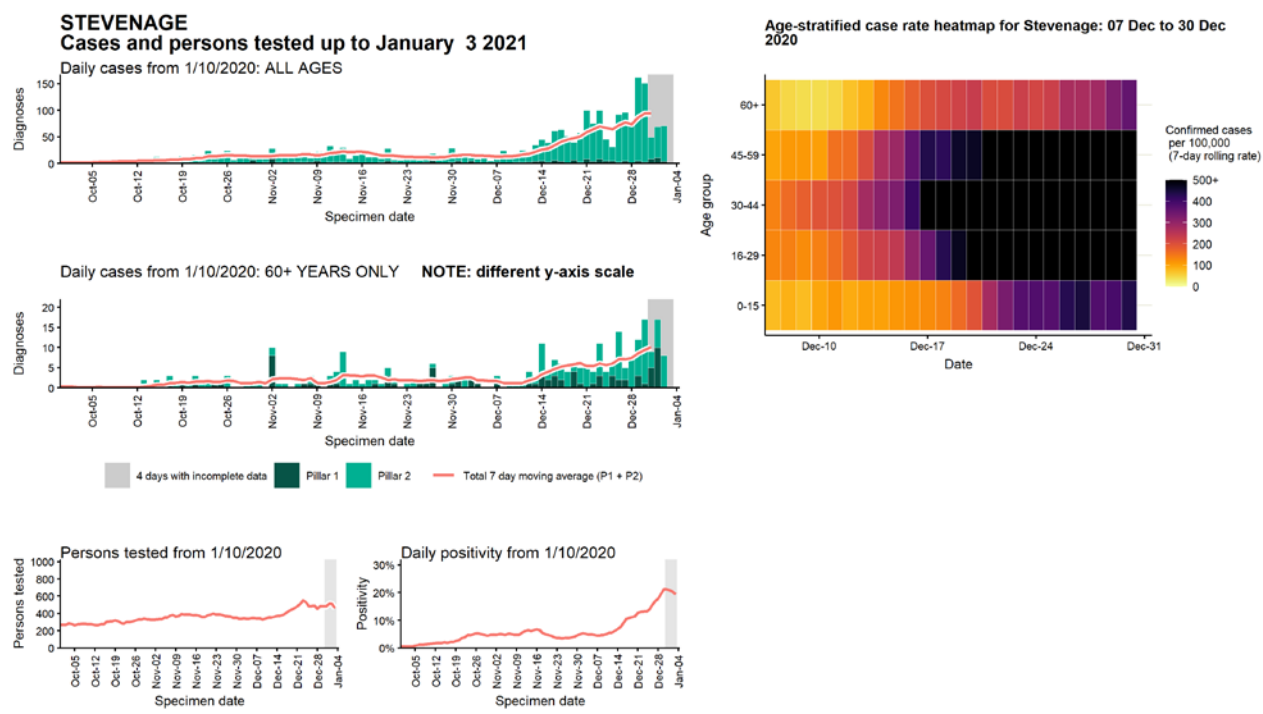
Data from SGSS. Produced by Outbreak Surveillance Team, PHE

Case numbers, testing numbers and positivity, St Albans : 01 Sep to 03 Jan 2021



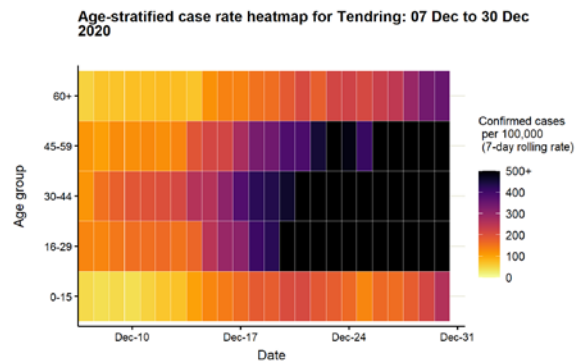
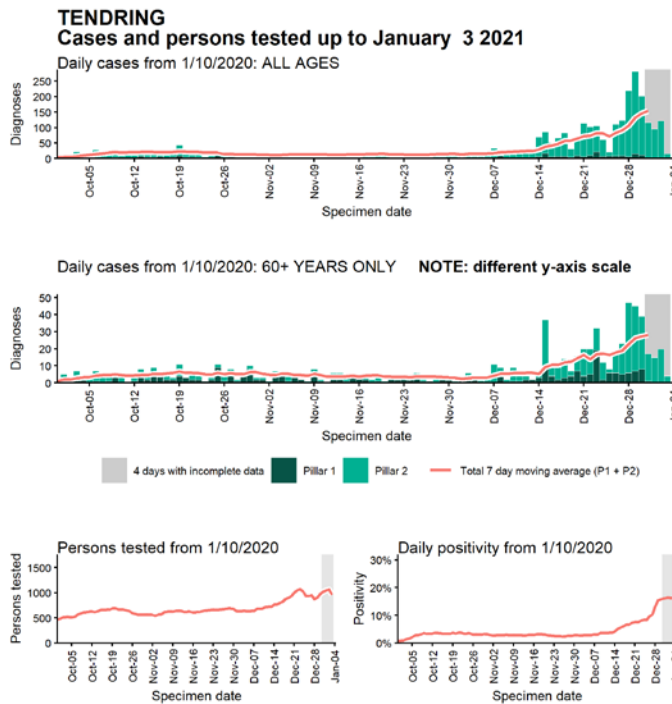
Data from SGSS. Produced by Outbreak Surveillance Team, PHE

Case numbers, testing numbers and positivity, Stevenage : 01 Sep to 03 Jan 2021



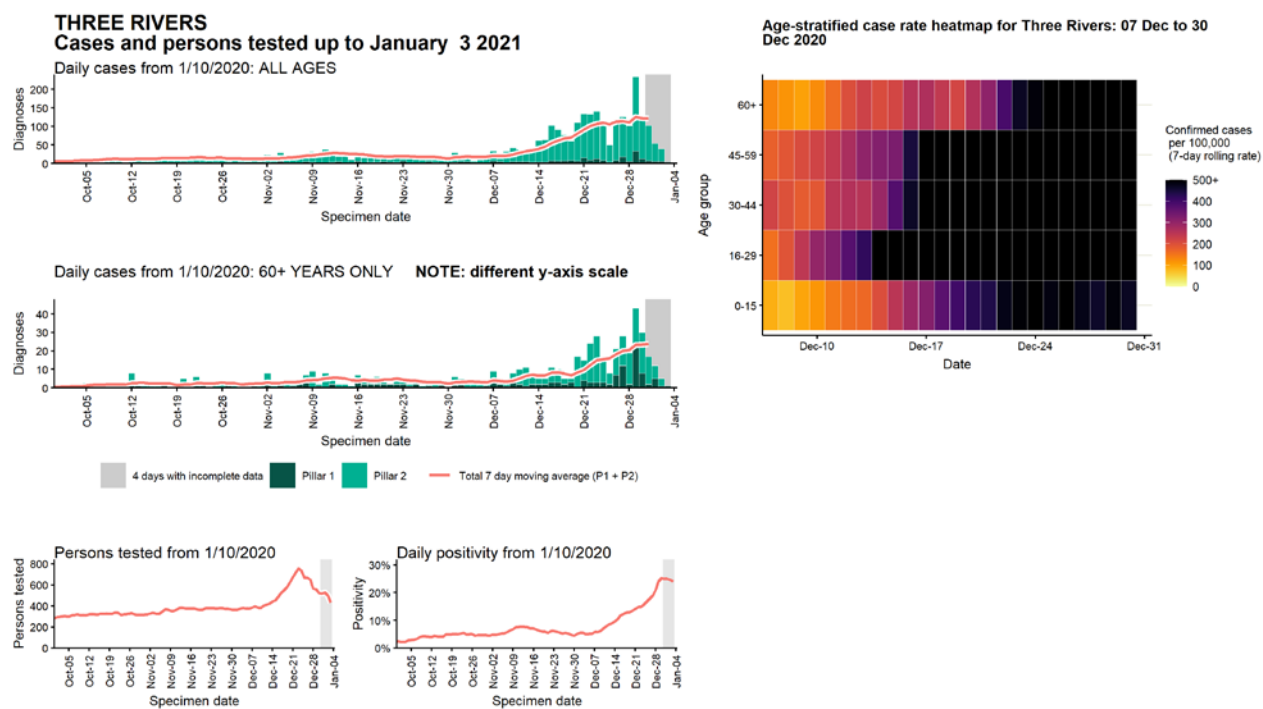
Data from SGSS. Produced by Outbreak Surveillance Team, PHE

Case numbers, testing numbers and positivity, Tendring : 01 Sep to 03 Jan 2021



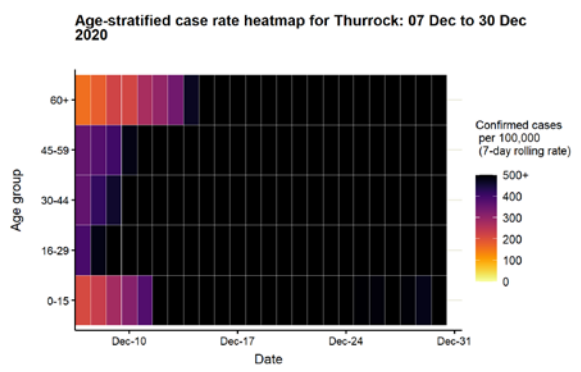
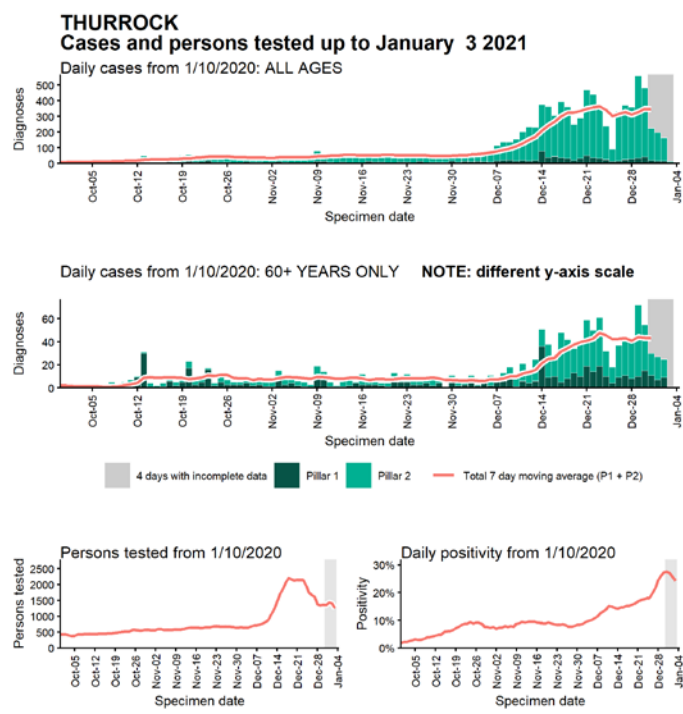
Data from SGSS. Produced by Outbreak Surveillance Team, PHE

Case numbers, testing numbers and positivity, Three Rivers : 01 Sep to 03 Jan 2021



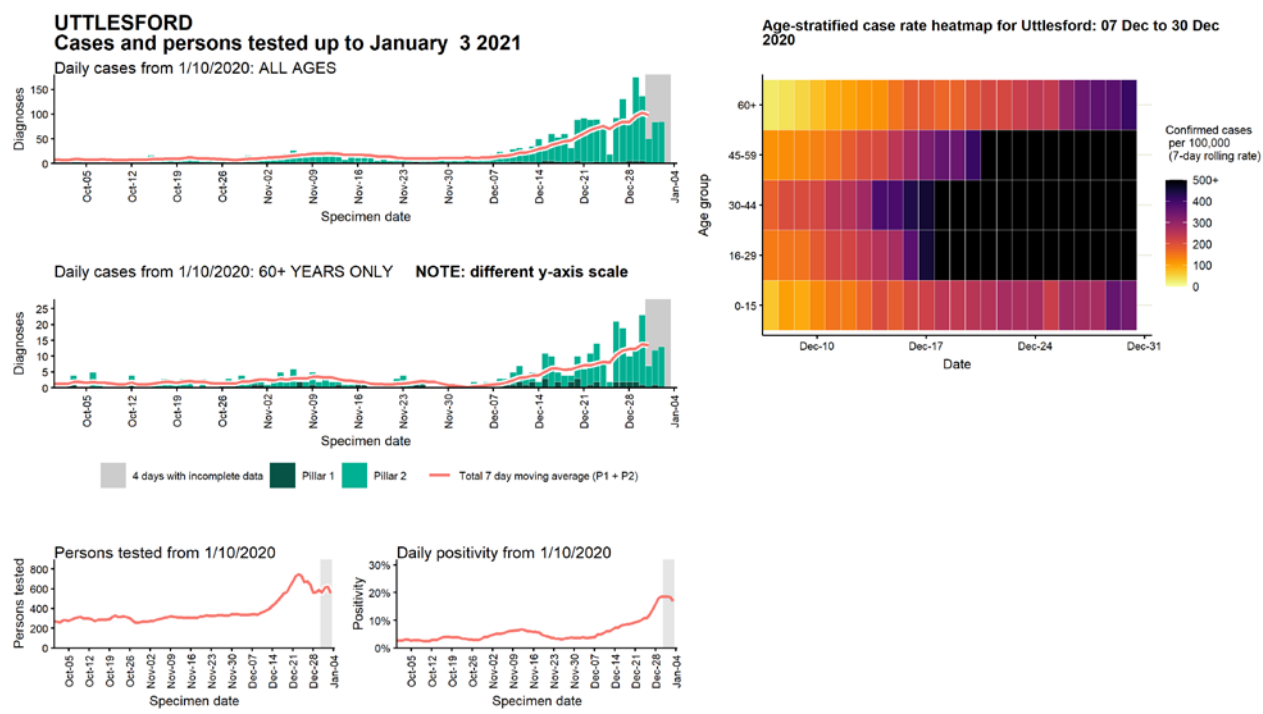
Data from SGSS. Produced by Outbreak Surveillance Team, PHE

Case numbers, testing numbers and positivity, Thurrock : 01 Sep to 03 Jan 2021



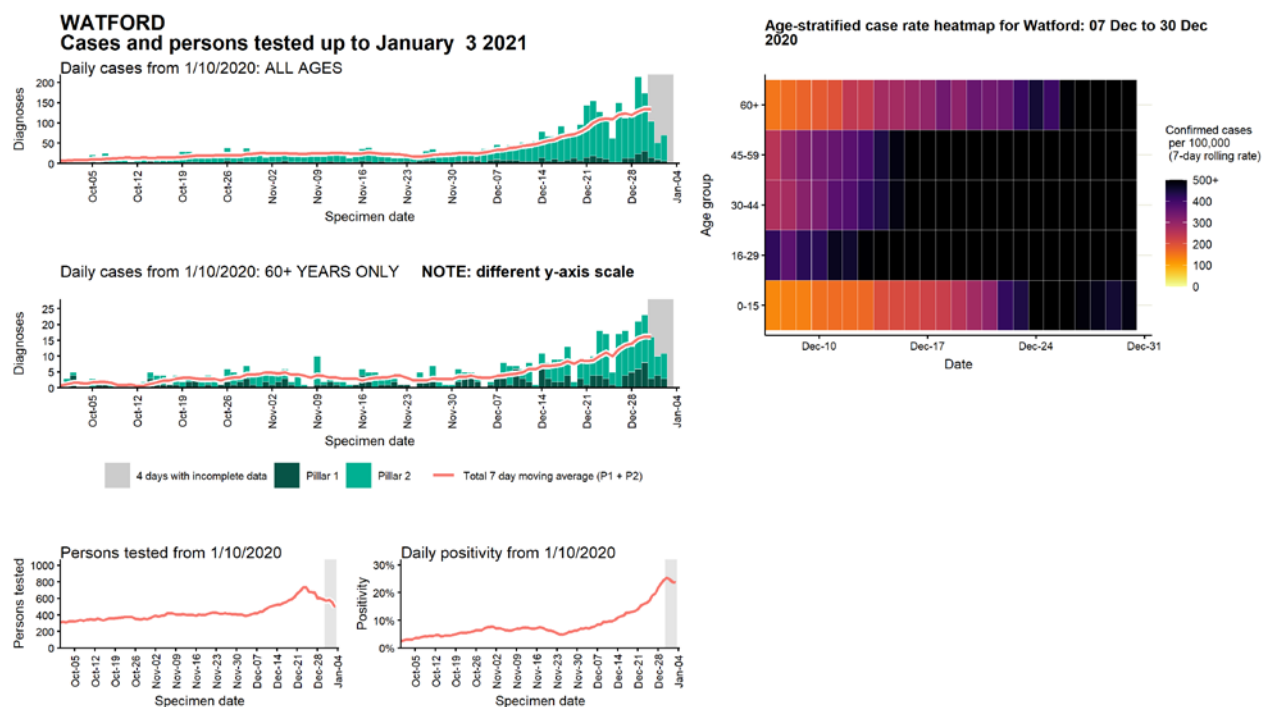
Data from SGSS. Produced by Outbreak Surveillance Team, PHE

Case numbers, testing numbers and positivity, Uttlesford : 01 Sep to 03 Jan 2021



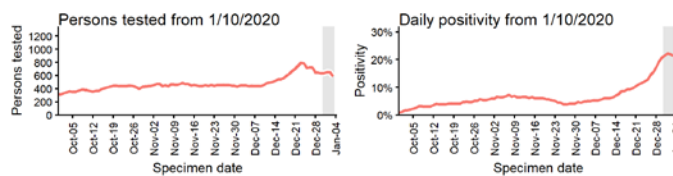
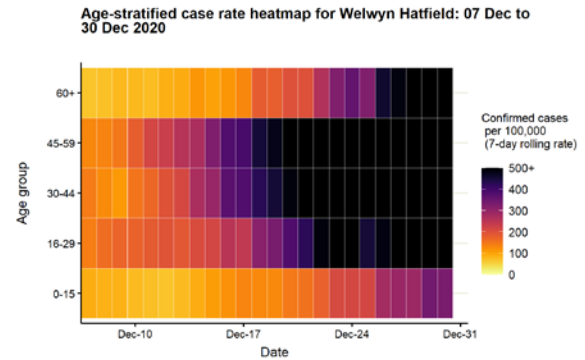
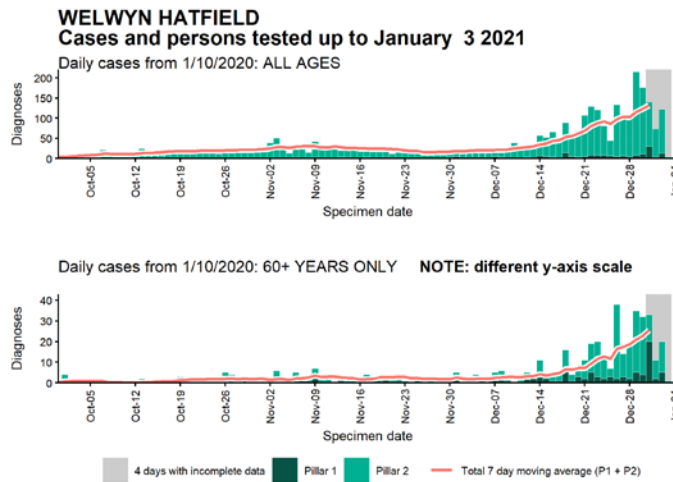
Data from SGSS. Produced by Outbreak Surveillance Team, PHE

Case numbers, testing numbers and positivity, Watford : 01 Sep to 03 Jan 2021



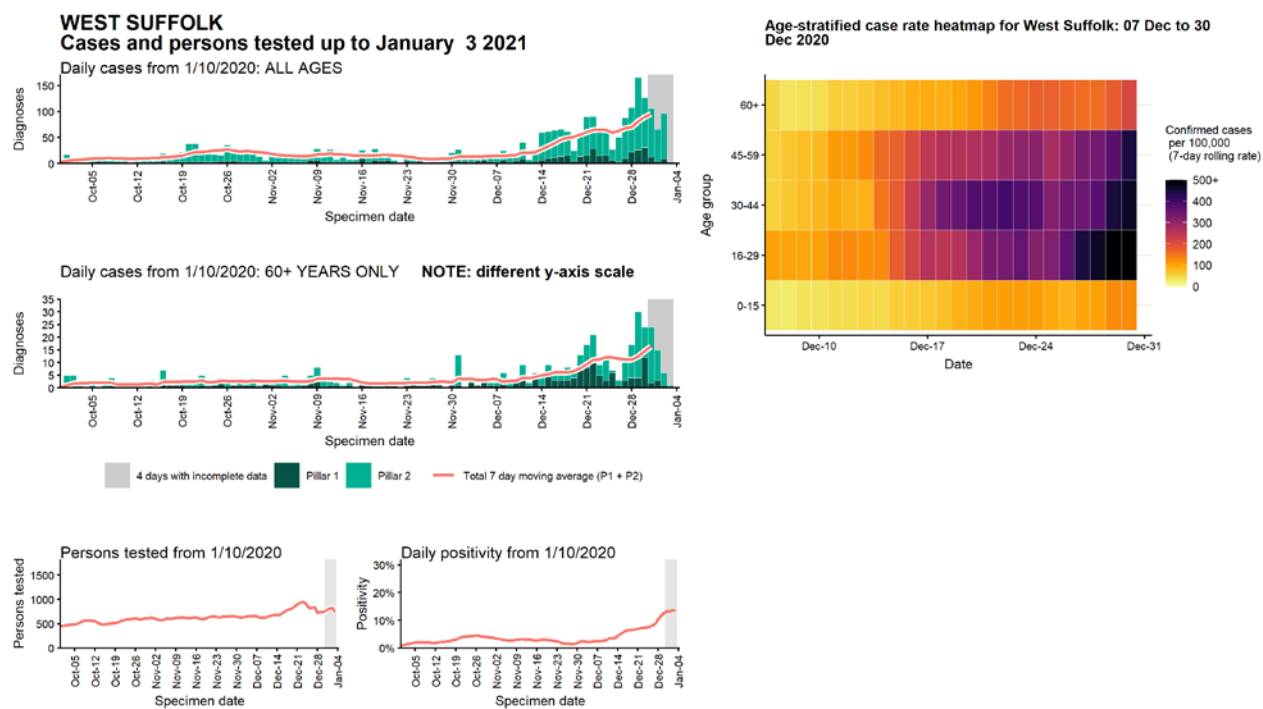
Data from SGSS. Produced by Outbreak Surveillance Team, PHE

Case numbers, testing numbers and positivity, Welwyn Hatfield : 01 Sep to 03 Jan 2021



Data from SGSS. Produced by Outbreak Surveillance Team, PHE

Case numbers, testing numbers and positivity, West Suffolk : 01 Sep to 03 Jan 2021



Data from SGSS. Produced by Outbreak Surveillance Team, PHE

© Crown copyright 2020

www.gov.uk/dhsc

This publication is licensed under the terms of the Open Government Licence v3.0 except where otherwise stated. To view this licence, visit nationalarchives.gov.uk/doc/open-government-licence/version/3

Where we have identified any third party copyright information you will need to obtain permission from the copyright holders concerned.

