



Department
of Health &
Social Care

East Midlands: lower tier local authority watchlist – epidemiological charts

Produced 04 January 2021

NOTES

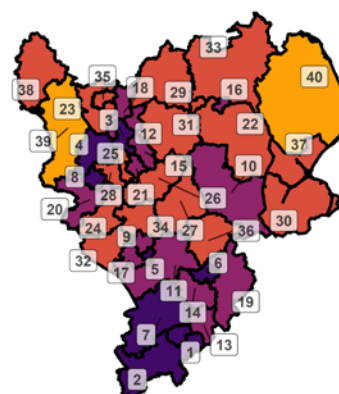
- This data is provided by Public Health England for the purpose of monitoring and supporting the management of Covid-19 infections in Local Authorities.
- The reports are produced using 2019 ONS population data
- If you would like to know the weekly trend for the case rate charts and persons tested chart please see Lower-tier local authority watchlist.

Weekly case rate per 100,000 population by local authority: 24 Dec to 30 Dec 2020

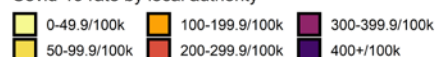
Rank	Local Authority	Case Rate (per 100,000)	Number of cases (1 week)
1	Northampton	603.3	1355
2	South Northamptonshire	510.1	482
3	Ashfield	450.3	576
4	Amber Valley	449.5	576
5	Oadby and Wigston	440.2	251
6	Corby	438.9	317
7	Daventry	437.5	376
8	Derby	432.2	1112
9	Leicester	397.5	1408
10	South Kesteven	384.8	548
11	Harborough	375.2	352
12	Mansfield	370.5	405
13	Wellingborough	352.5	281
14	Kettering	332.1	338
15	Gedling	330.8	390
16	Lincoln	325.3	323
17	Blaby	315.2	320
18	Bolsover	314.0	253
19	East Northamptonshire	313.1	296
20	South Derbyshire	311.4	334

Rank	Local Authority	Case Rate (per 100,000)	Number of cases (1 week)
21	Nottingham	305.5	1017
22	North Kesteven	290.0	339
23	North East Derbyshire	289.8	294
24	North West Leicestershire	286.6	297
25	Broxtowe	285.9	326
26	Rushcliffe	278.6	332
27	Melton	271.4	139
28	Erewash	268.7	310
29	Bassetlaw	264.8	311
30	South Holland	258.9	246
31	Newark and Sherwood	254.9	312
32	Hinckley and Bosworth	252.8	286
33	West Lindsey	247.7	237
34	Charnwood	230.3	428
35	Chesterfield	225.0	236
36	Rutland	220.4	88
37	Boston	213.8	150
38	High Peak	207.2	192
39	Derbyshire Dales	189.4	137
40	East Lindsey	155.9	221

East Midlands
COVID-19 cases: 24 Dec to 30 Dec 2020
 Weekly case rates per 100,000 population by local authority



Covid-19 rate by local authority



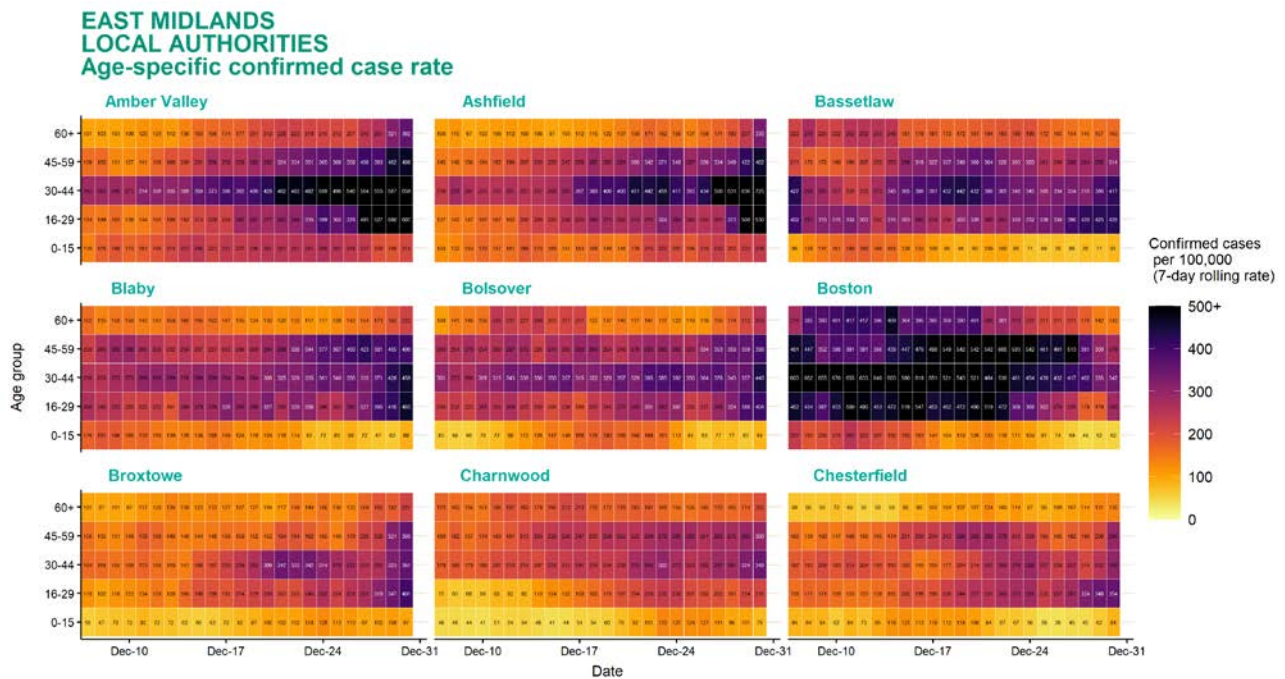
Data from SGSS; Pillar 1 and 2 testing. Figure by Outbreak Surveillance Team, Public Health England.
 Contains National Statistics data including 2019 population estimates Â© Crown copyright and database right 2020

Age-stratified heatmap of weekly case rate for East Midlands : 07 Dec to 30 Dec 2020



Source: Case data from SGSS. Produced by Outbreak Surveillance Team, PHE
Contains National Statistics data Â© Crown copyright and database right 2020

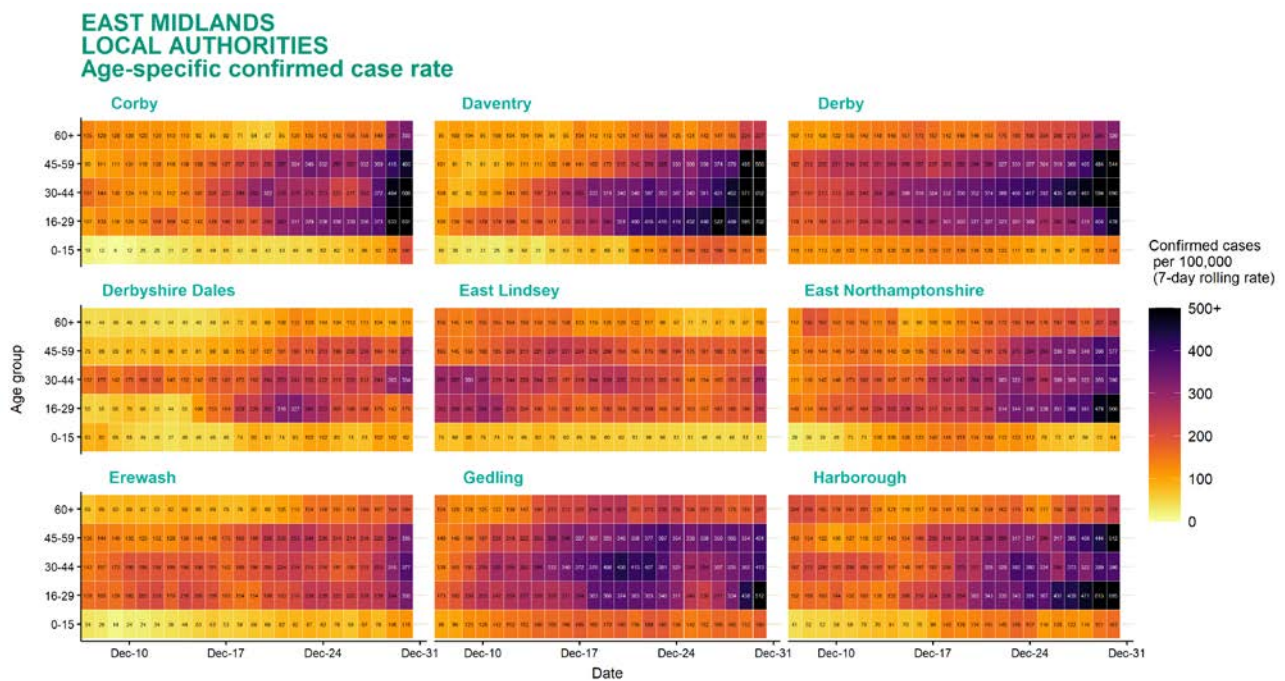
Age-stratified heatmap of weekly case rate by local authority for East Midlands : 07 Dec to 30 Dec 2020



Source: Case data from SGSS. Produced by Outbreak Surveillance Team, PHE

Contains National Statistics data Â© Crown copyright and database right 2020

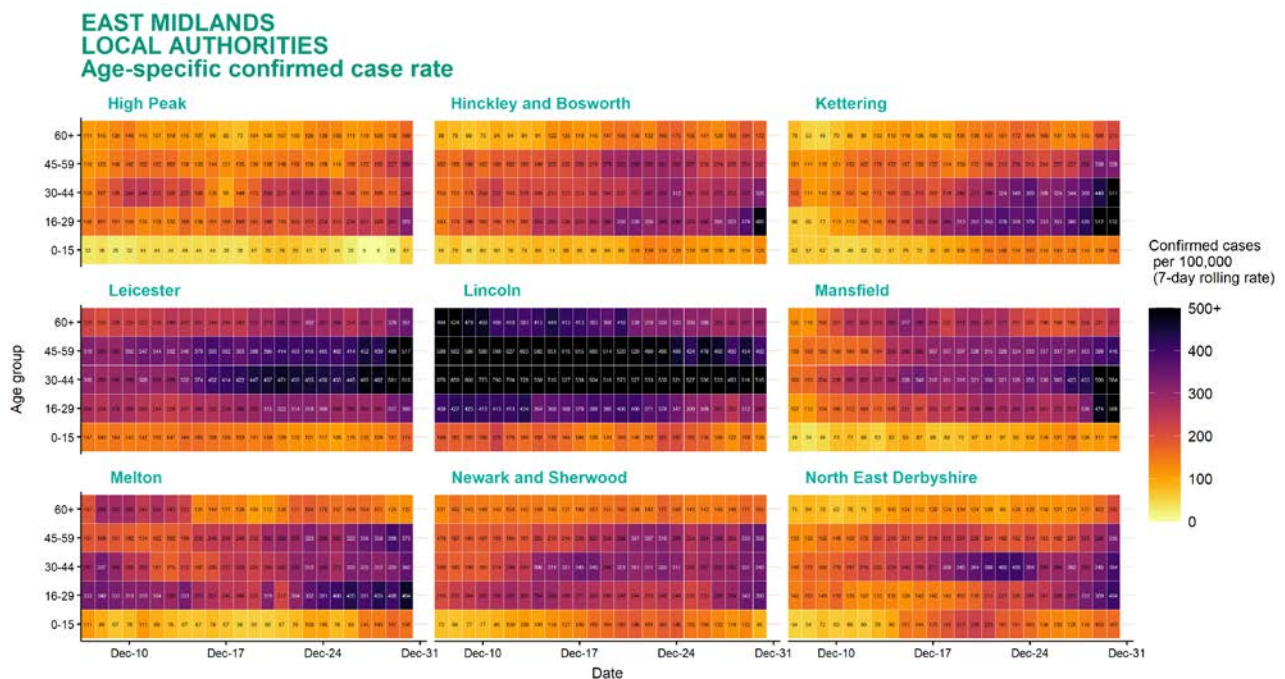
Age-stratified heatmap of weekly case rate by local authority for East Midlands : 07 Dec to 30 Dec 2020



Source: Case data from SGSS. Produced by Outbreak Surveillance Team, PHE

Contains National Statistics data Â© Crown copyright and database right 2020

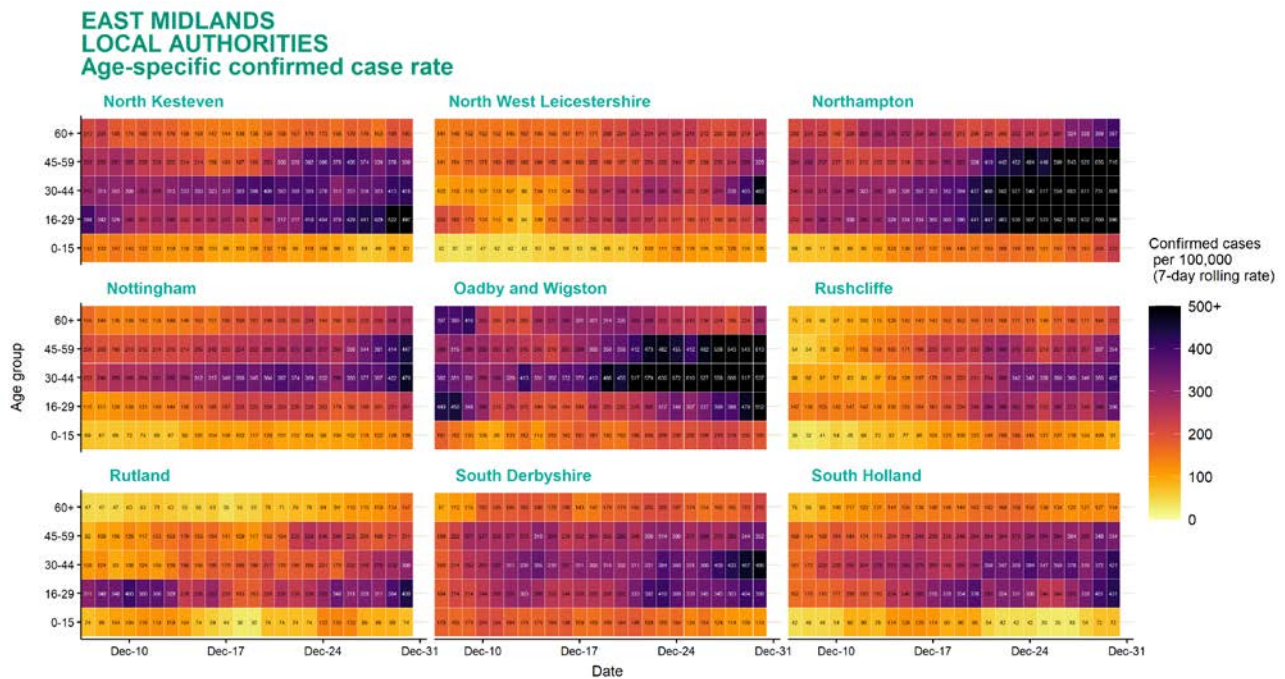
Age-stratified heatmap of weekly case rate by local authority for East Midlands : 07 Dec to 30 Dec 2020



Source: Case data from SGSS. Produced by Outbreak Surveillance Team, PHE

Contains National Statistics data Â© Crown copyright and database right 2020

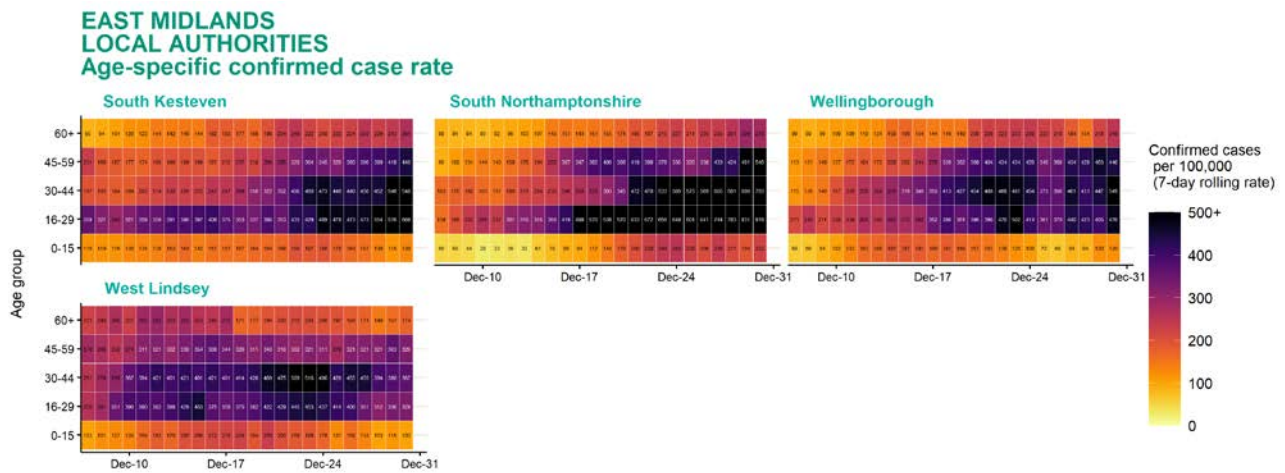
Age-stratified heatmap of weekly case rate by local authority for East Midlands : 07 Dec to 30 Dec 2020



Source: Case data from SGSS. Produced by Outbreak Surveillance Team, PHE

Contains National Statistics data Â© Crown copyright and database right 2020

Age-stratified heatmap of weekly case rate by local authority for East Midlands : 07 Dec to 30 Dec 2020

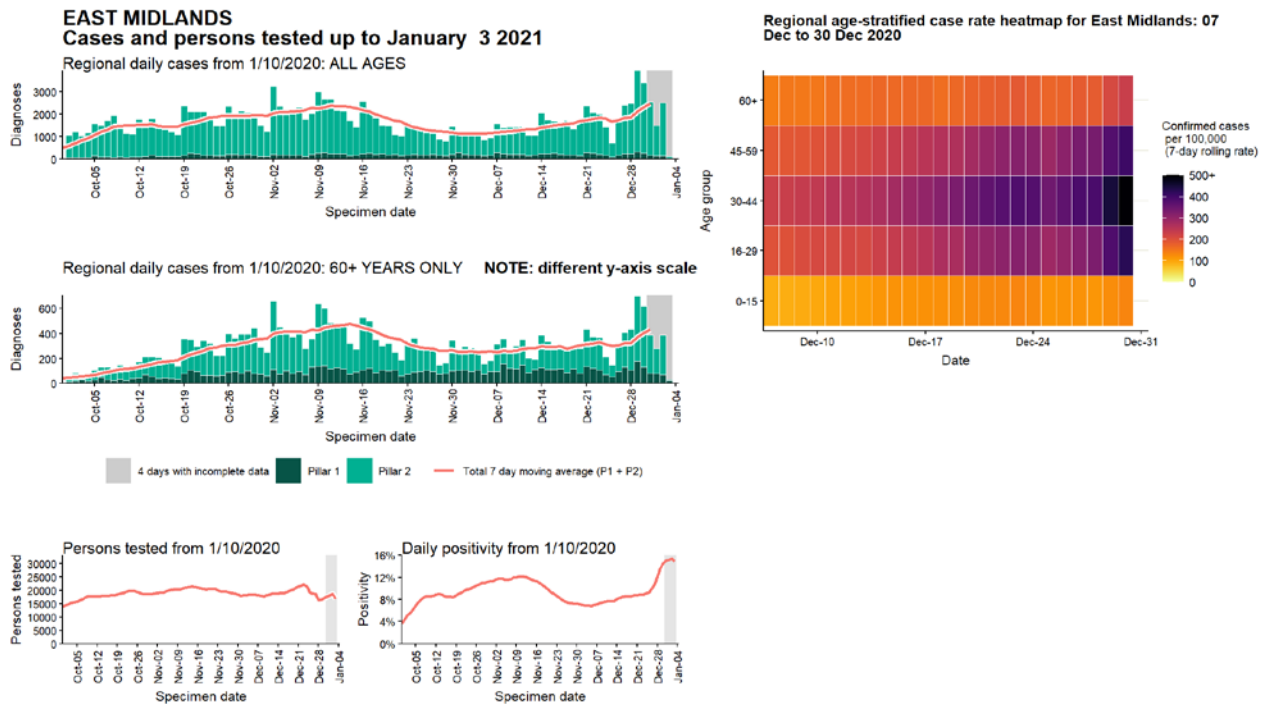


Date

Source: Case data from SGSS. Produced by Outbreak Surveillance Team, PHE

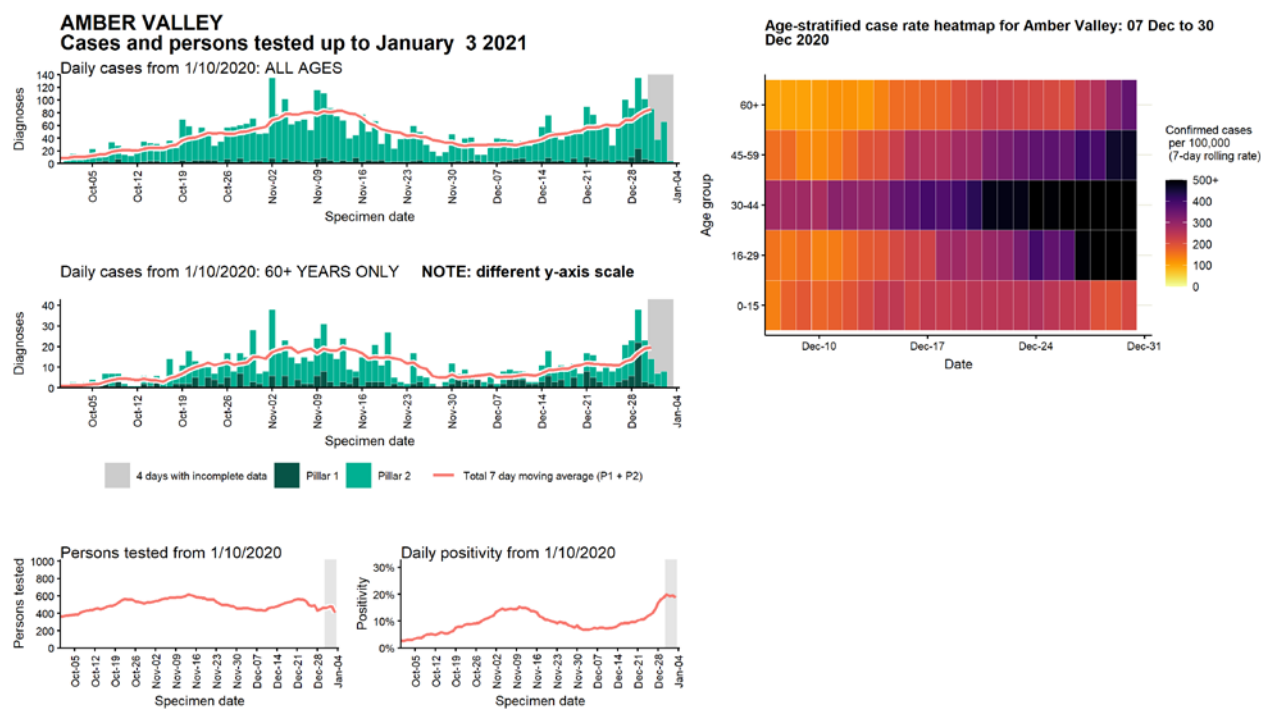
Contains National Statistics data Â© Crown copyright and database right 2020

Regional case numbers, testing numbers and positivity, East Midlands : 01 Sep to 03 Jan 2021



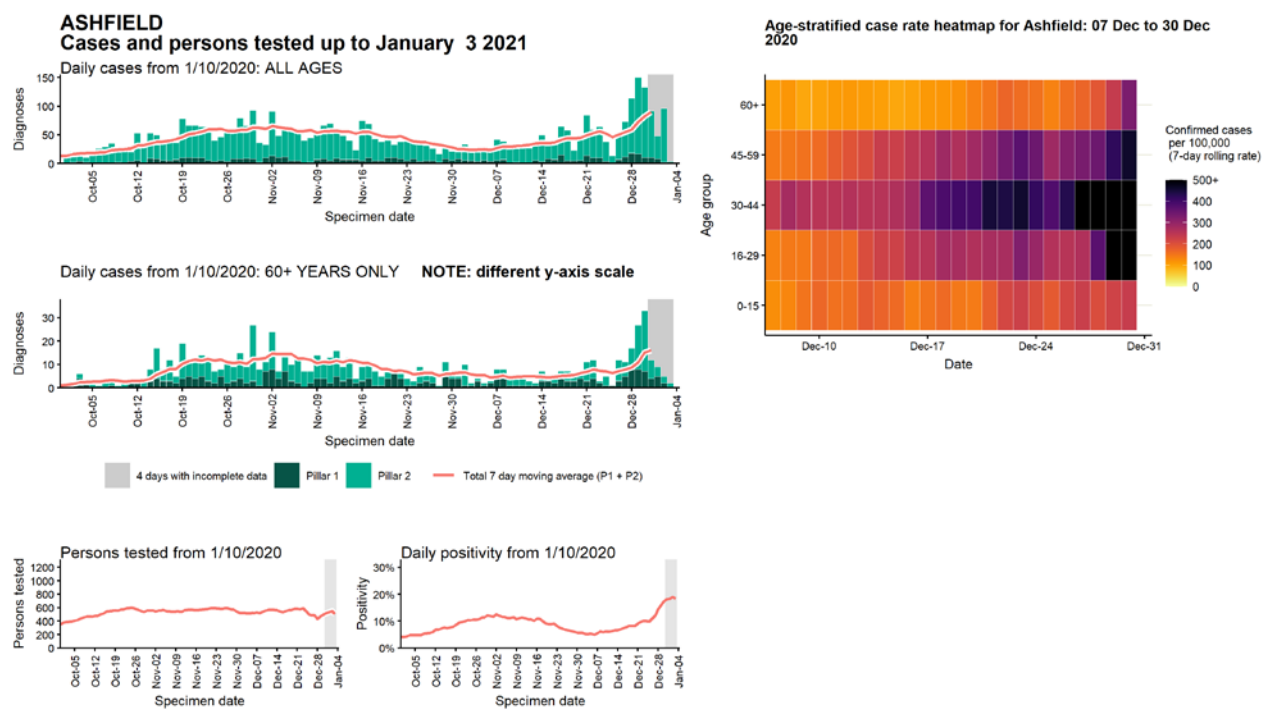
Data from SGSS. Produced by Outbreak Surveillance Team, PHE

Case numbers, testing numbers and positivity, Amber Valley : 01 Sep to 03 Jan 2021



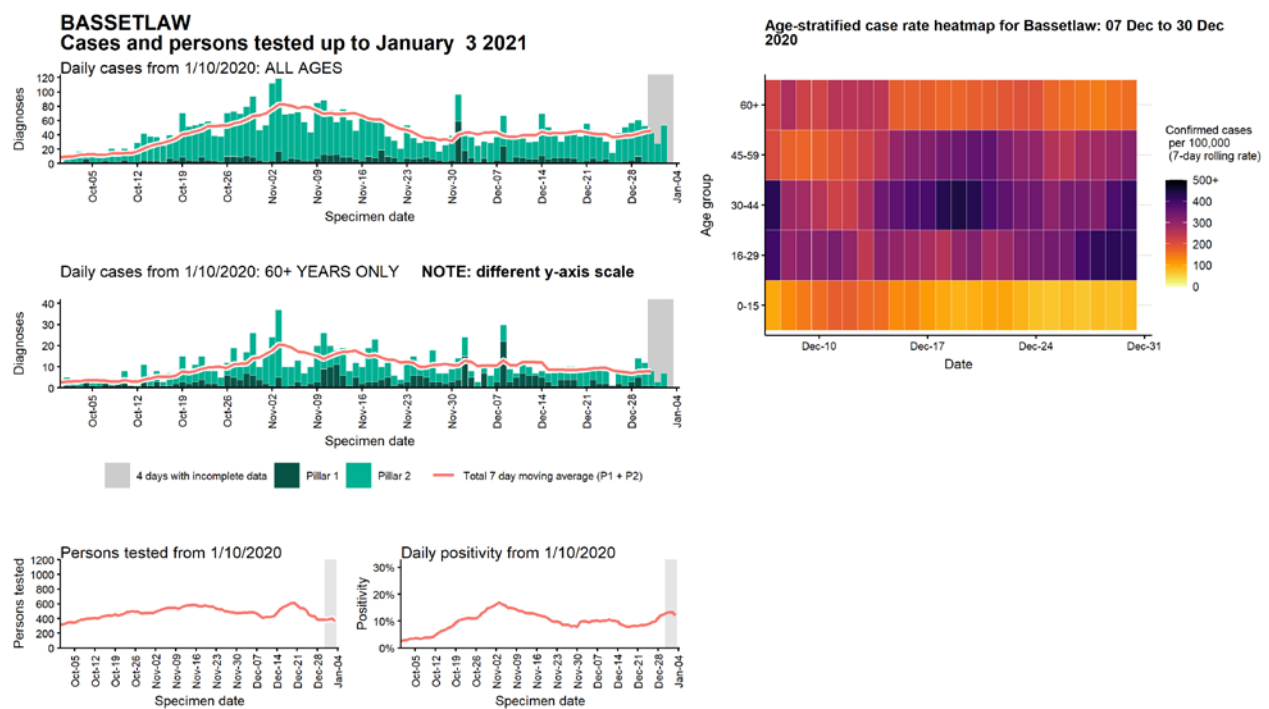
Data from SGSS. Produced by Outbreak Surveillance Team, PHE

Case numbers, testing numbers and positivity, Ashfield : 01 Sep to 03 Jan 2021



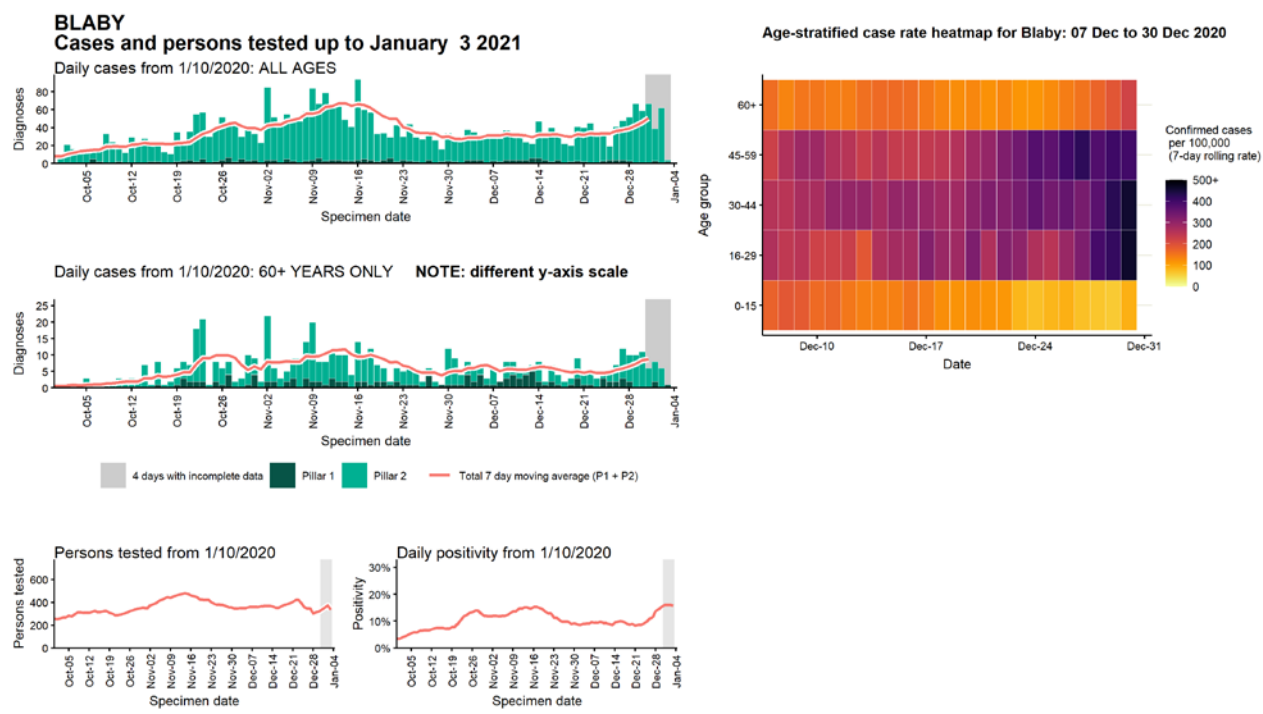
Data from SGSS. Produced by Outbreak Surveillance Team, PHE

Case numbers, testing numbers and positivity, Bassetlaw : 01 Sep to 03 Jan 2021



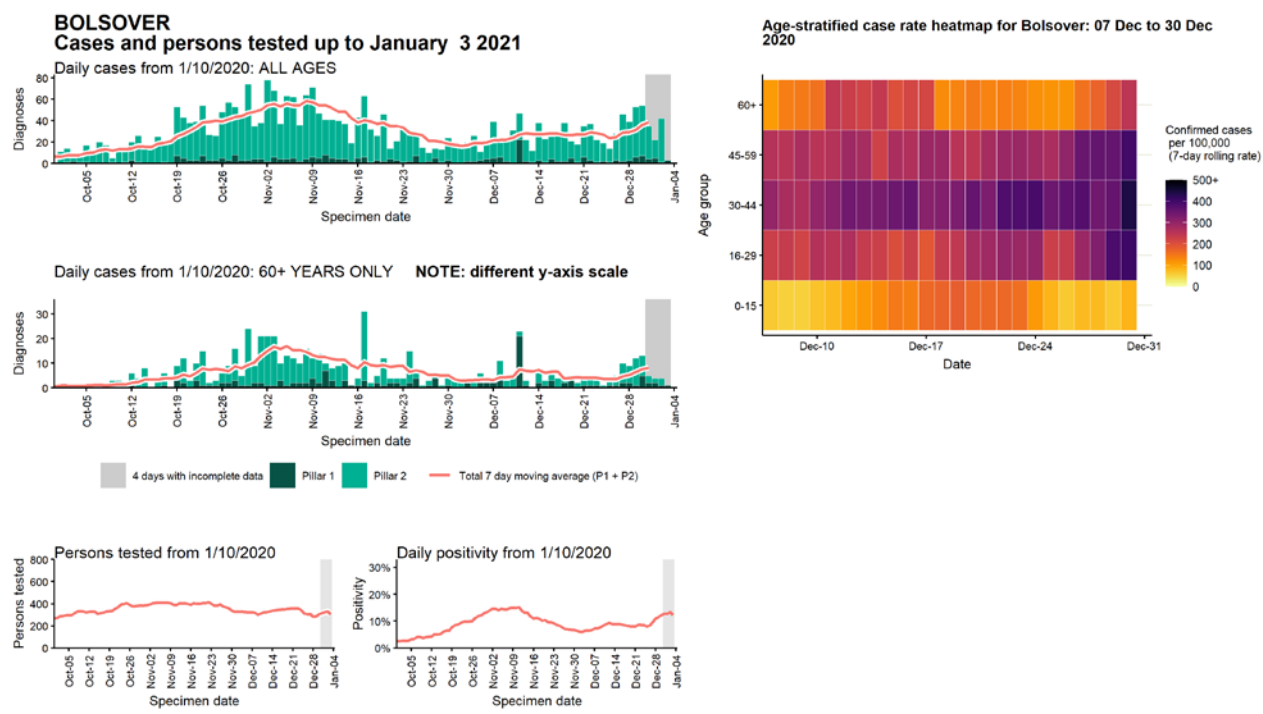
Data from SGSS. Produced by Outbreak Surveillance Team, PHE

Case numbers, testing numbers and positivity, Blaby : 01 Sep to 03 Jan 2021



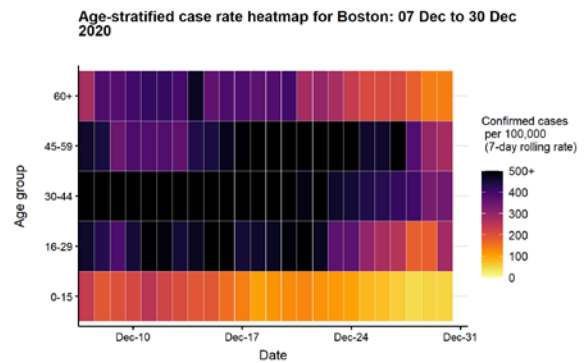
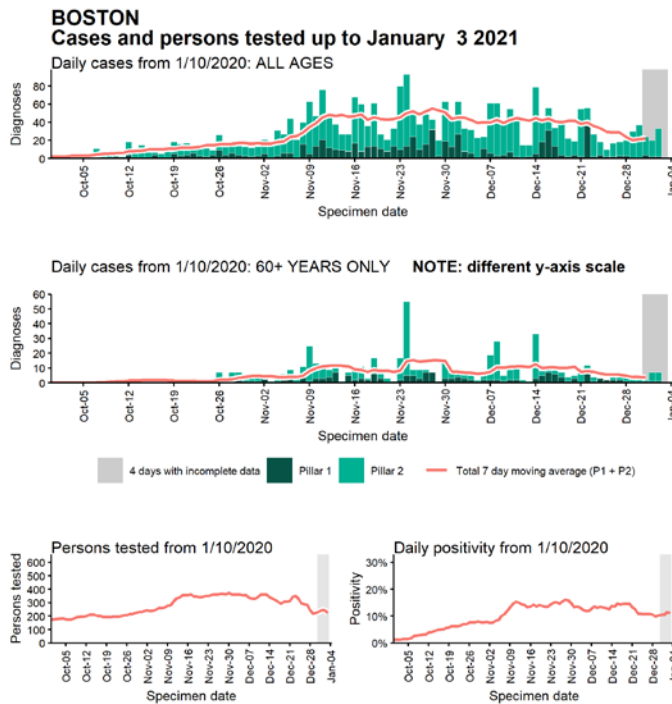
Data from SGSS. Produced by Outbreak Surveillance Team, PHE

Case numbers, testing numbers and positivity, Bolsover : 01 Sep to 03 Jan 2021



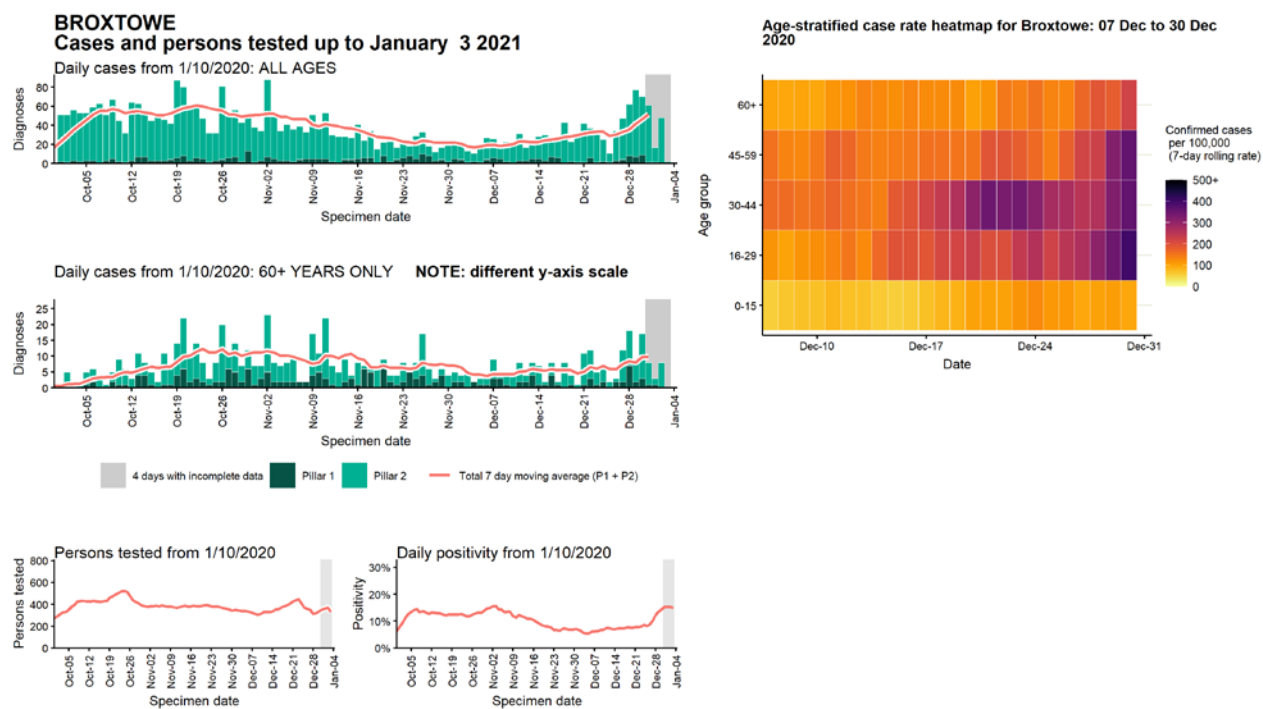
Data from SGSS. Produced by Outbreak Surveillance Team, PHE

Case numbers, testing numbers and positivity, Boston : 01 Sep to 03 Jan 2021

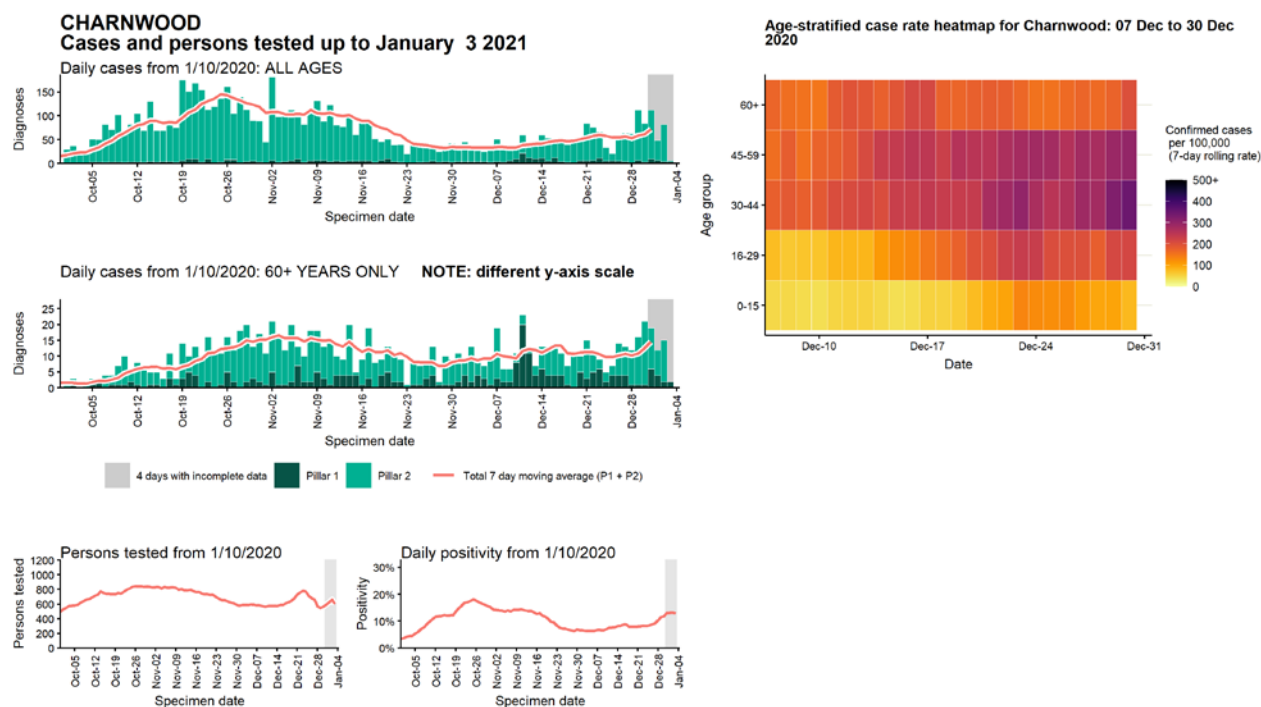


Data from SGSS. Produced by Outbreak Surveillance Team, PHE

Case numbers, testing numbers and positivity, Broxtowe : 01 Sep to 03 Jan 2021

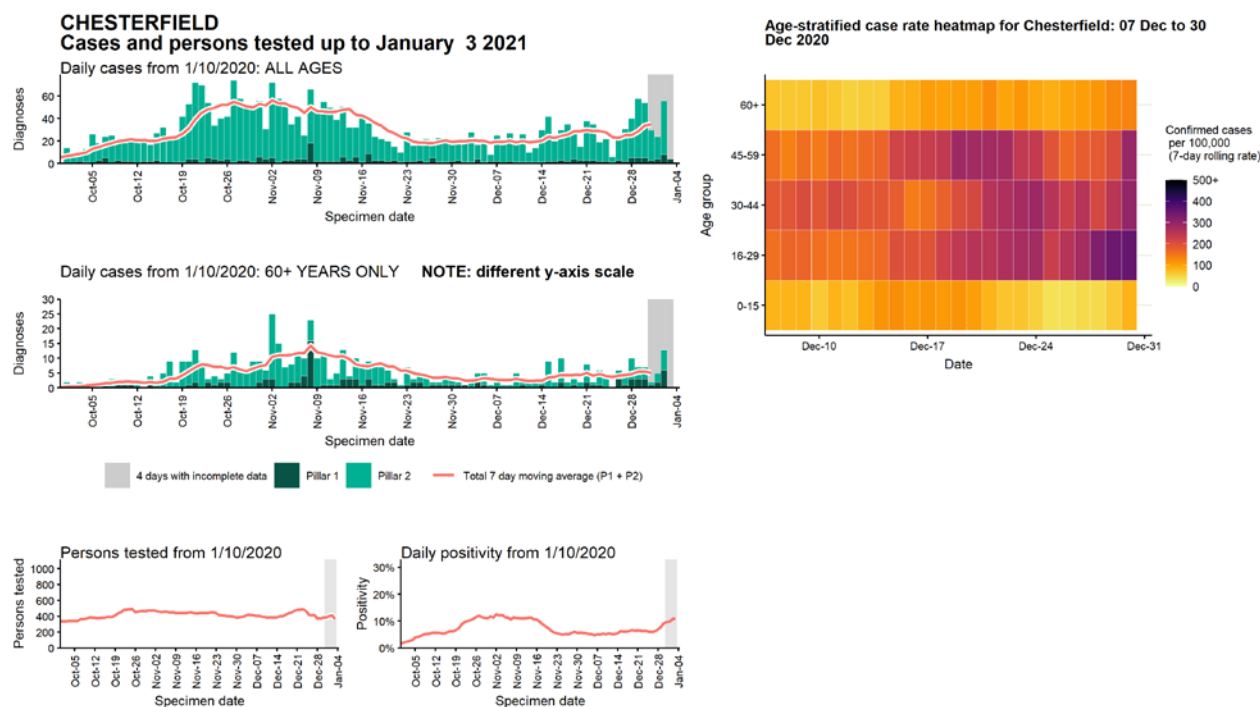


Case numbers, testing numbers and positivity, Charnwood : 01 Sep to 03 Jan 2021



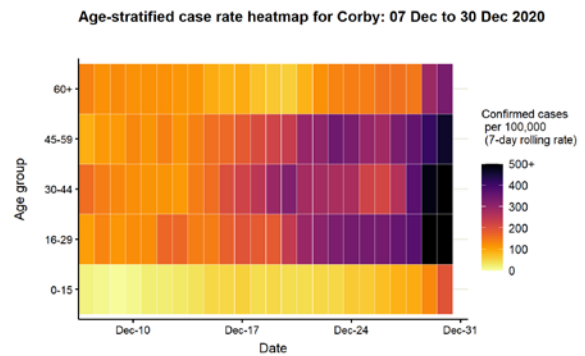
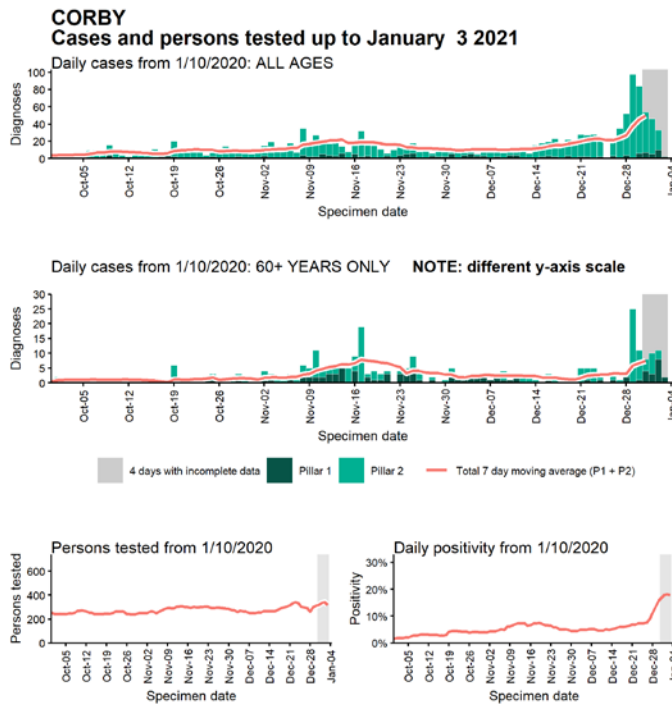
Data from SGSS. Produced by Outbreak Surveillance Team, PHE

Case numbers, testing numbers and positivity, Chesterfield : 01 Sep to 03 Jan 2021



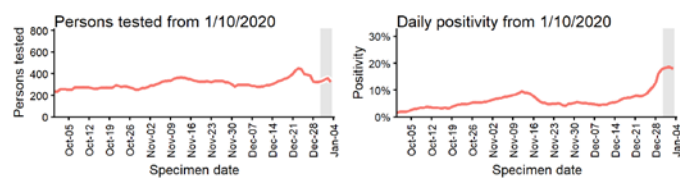
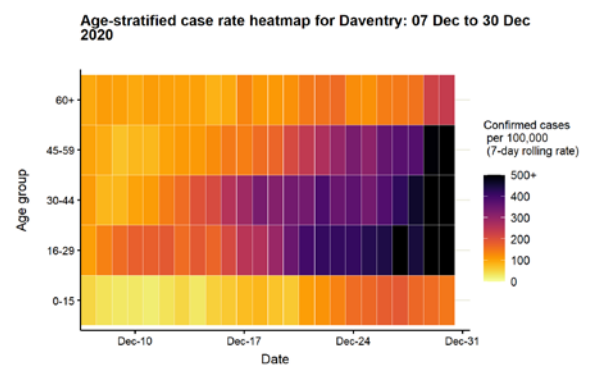
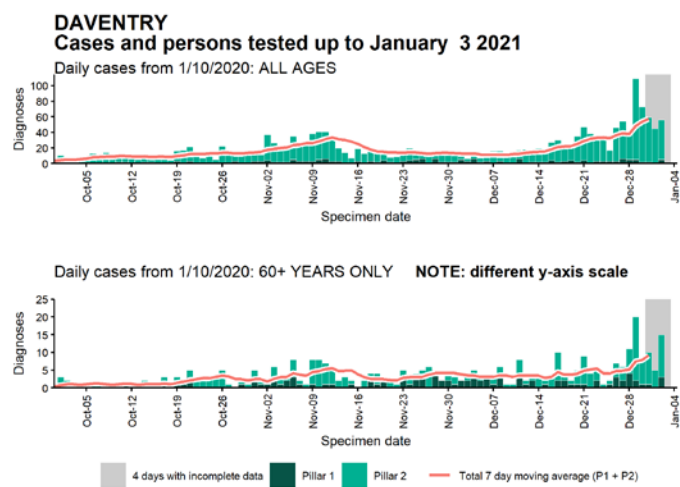
Data from SGSS. Produced by Outbreak Surveillance Team, PHE

Case numbers, testing numbers and positivity, Corby : 01 Sep to 03 Jan 2021



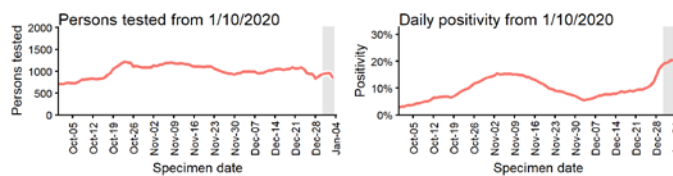
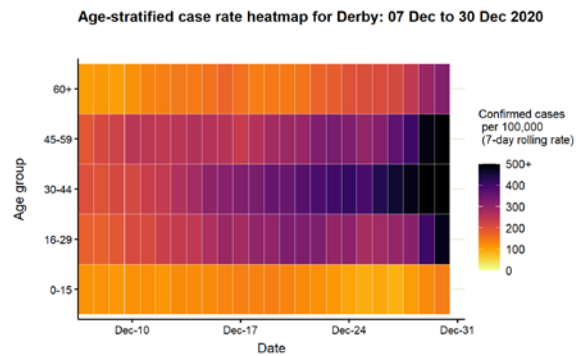
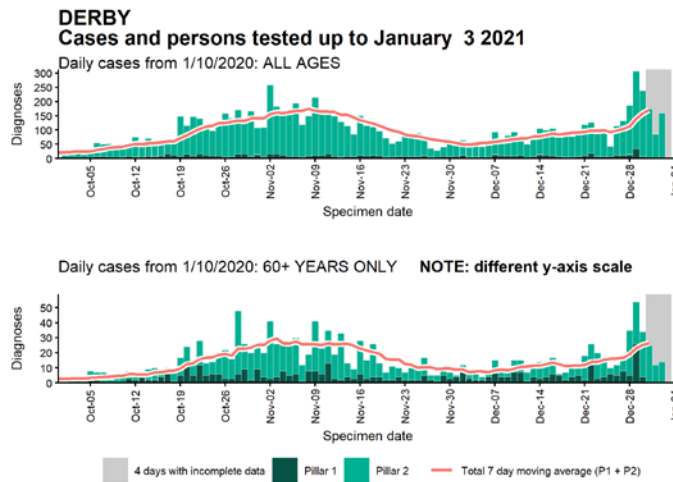
Data from SGSS. Produced by Outbreak Surveillance Team, PHE

Case numbers, testing numbers and positivity, Daventry : 01 Sep to 03 Jan 2021



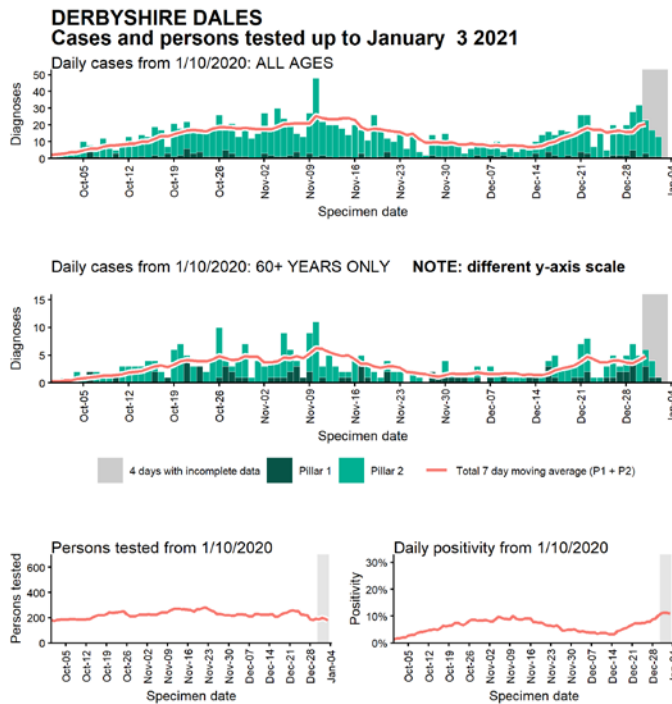
Data from SGSS. Produced by Outbreak Surveillance Team, PHE

Case numbers, testing numbers and positivity, Derby : 01 Sep to 03 Jan 2021

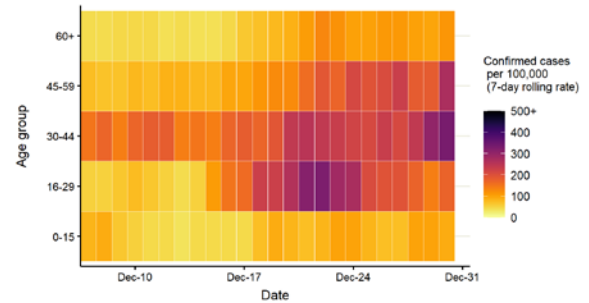


Data from SGSS. Produced by Outbreak Surveillance Team, PHE

Case numbers, testing numbers and positivity, Derbyshire Dales : 01 Sep to 03 Jan 2021

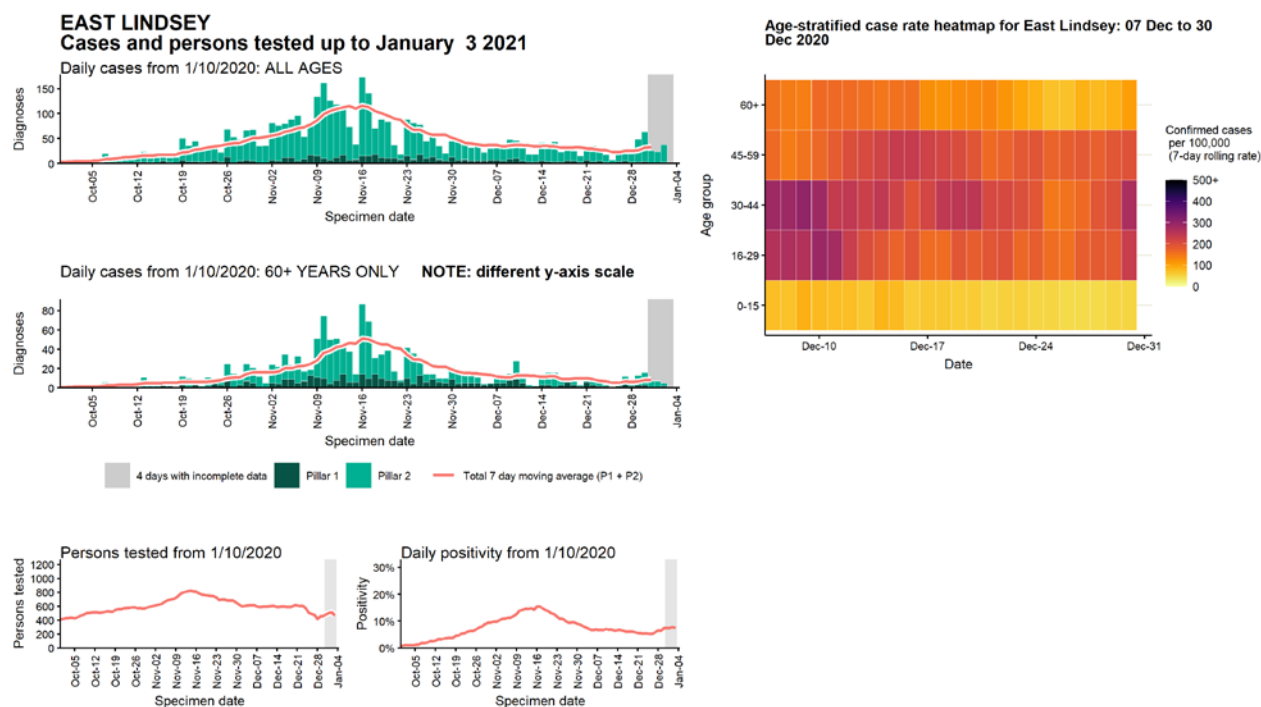


Age-stratified case rate heatmap for Derbyshire Dales: 07 Dec to 30 Dec 2020



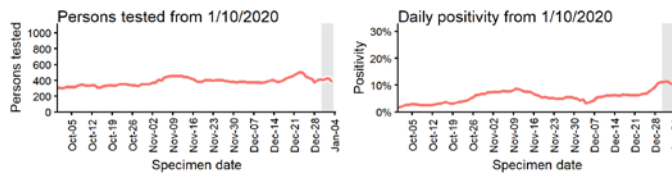
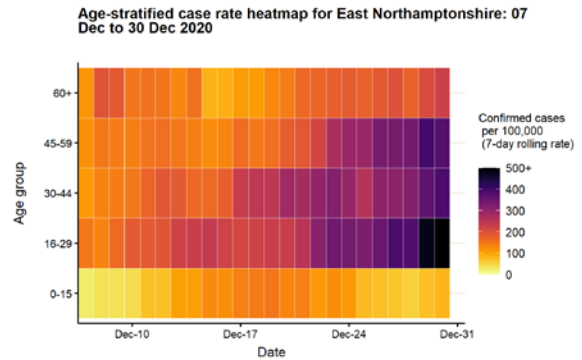
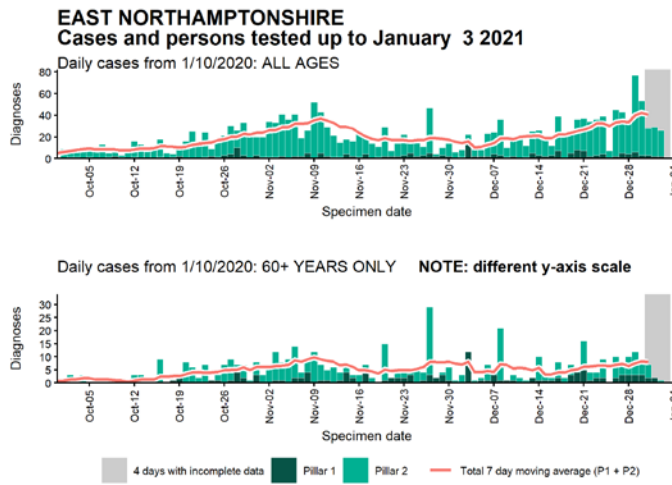
Data from SGSS. Produced by Outbreak Surveillance Team, PHE

Case numbers, testing numbers and positivity, East Lindsey : 01 Sep to 03 Jan 2021



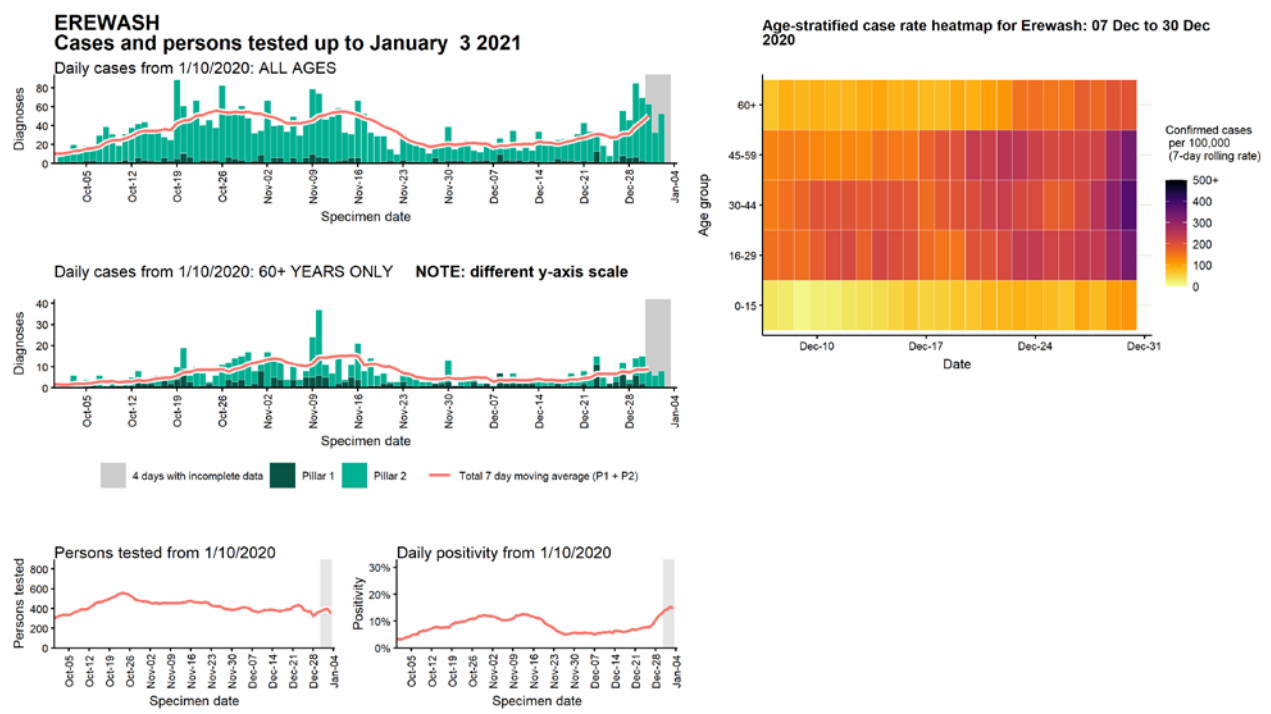
Data from SGSS. Produced by Outbreak Surveillance Team, PHE

Case numbers, testing numbers and positivity, East Northamptonshire : 01 Sep to 03 Jan 2021



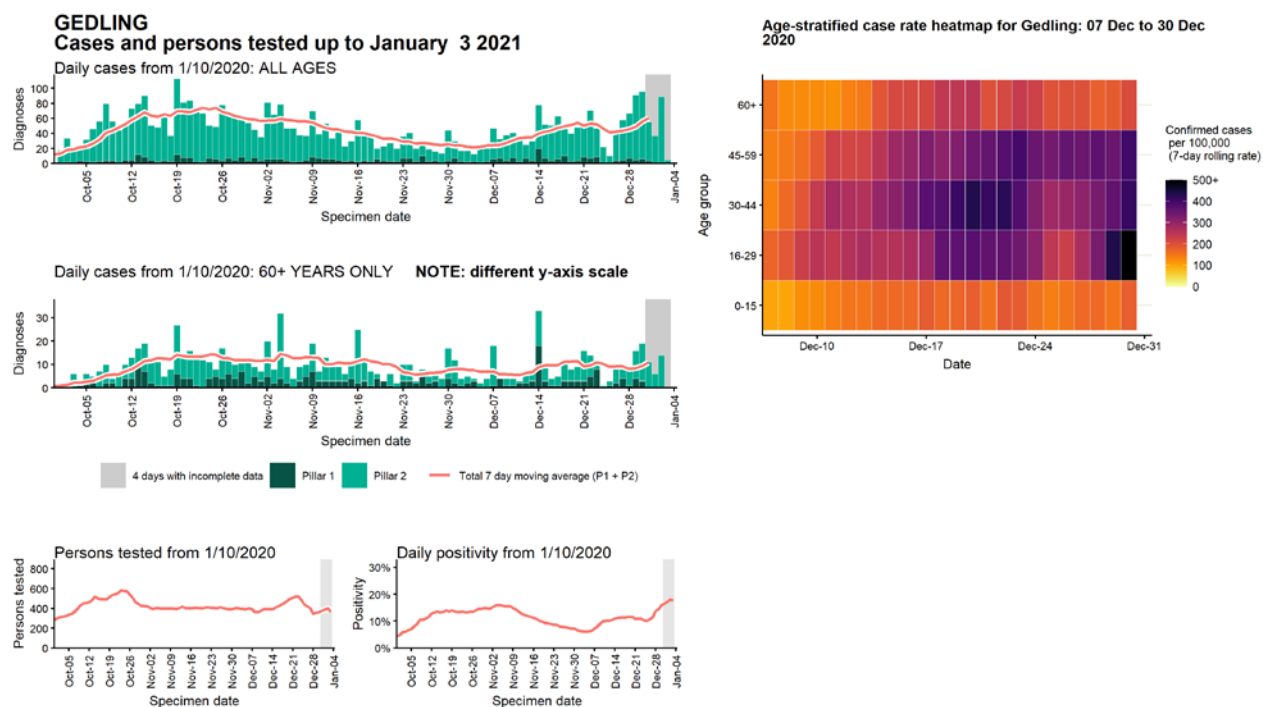
Data from SGSS. Produced by Outbreak Surveillance Team, PHE

Case numbers, testing numbers and positivity, Erewash : 01 Sep to 03 Jan 2021



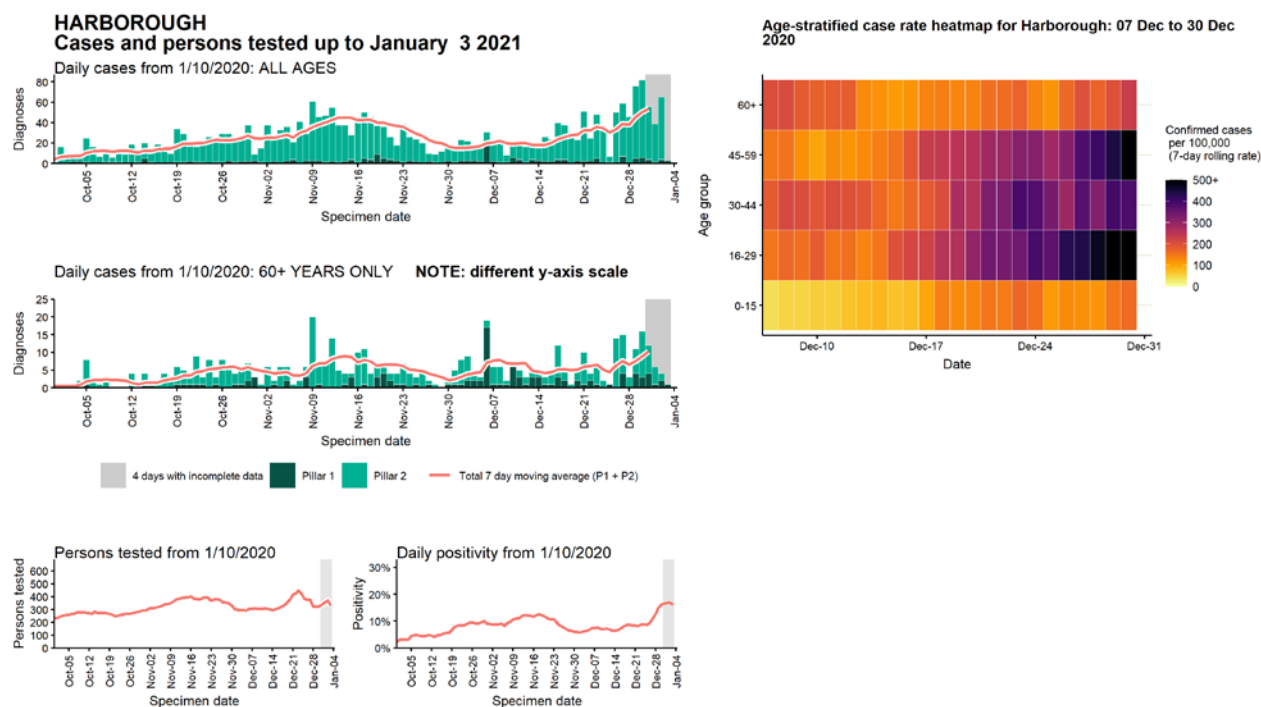
Data from SGSS. Produced by Outbreak Surveillance Team, PHE

Case numbers, testing numbers and positivity, Gedling : 01 Sep to 03 Jan 2021



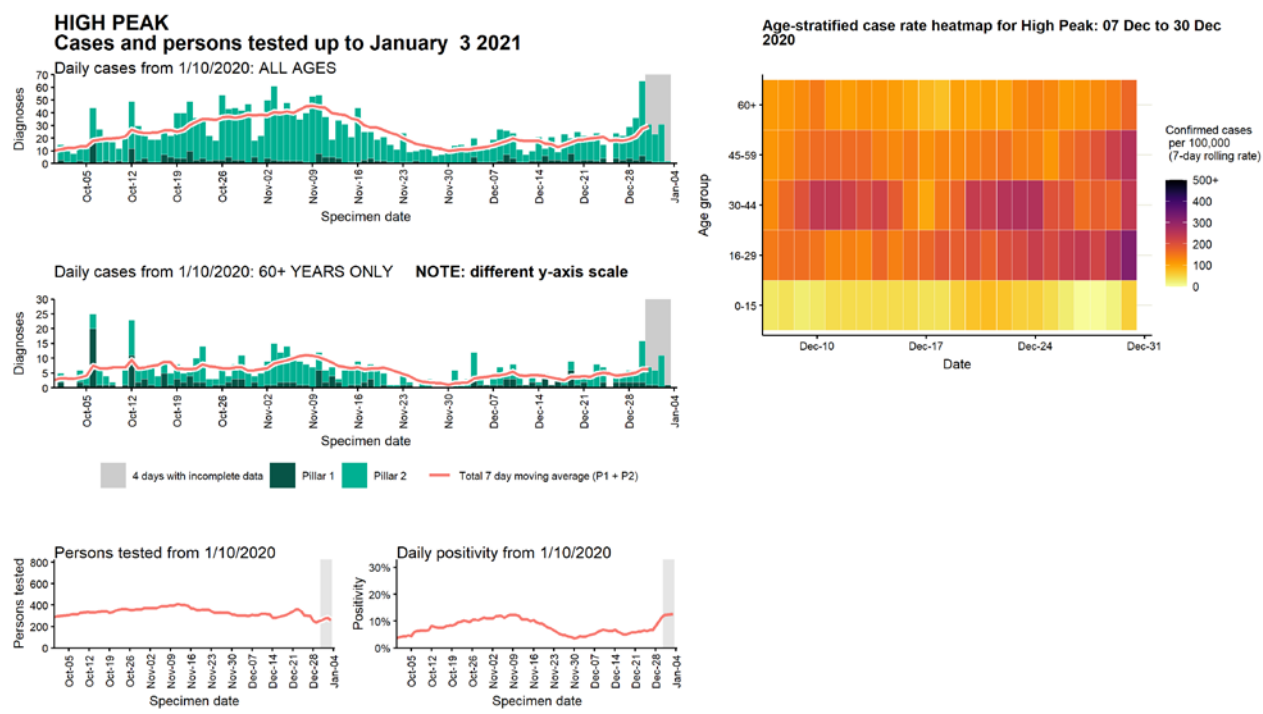
Data from SGSS. Produced by Outbreak Surveillance Team, PHE

Case numbers, testing numbers and positivity, Harborough : 01 Sep to 03 Jan 2021



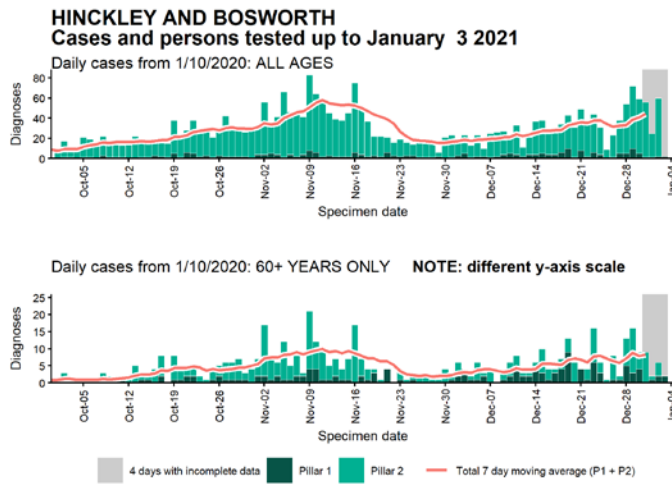
Data from SGSS. Produced by Outbreak Surveillance Team, PHE

Case numbers, testing numbers and positivity, High Peak : 01 Sep to 03 Jan 2021

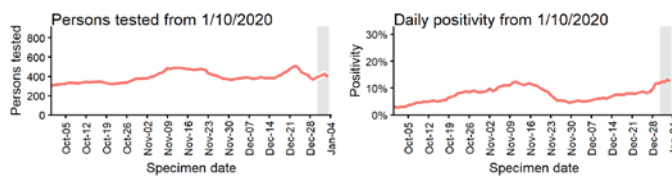
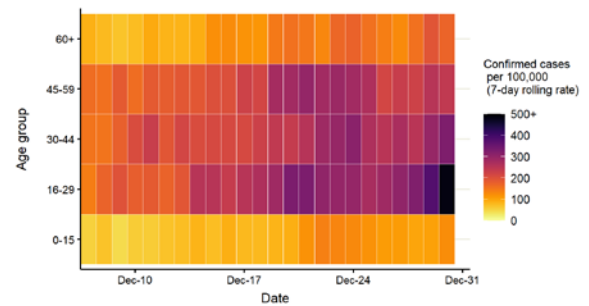


Data from SGSS. Produced by Outbreak Surveillance Team, PHE

Case numbers, testing numbers and positivity, Hinckley and Bosworth : 01 Sep to 03 Jan 2021

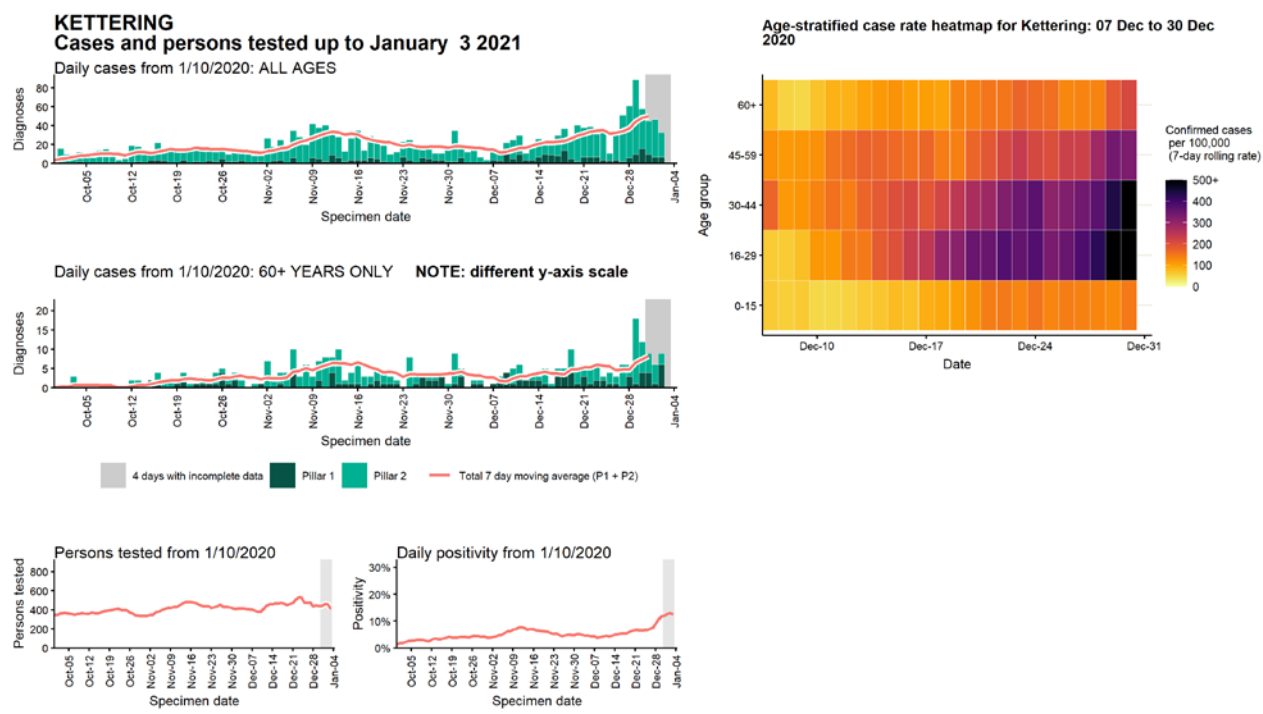


Age-stratified case rate heatmap for Hinckley and Bosworth: 07 Dec to 30 Dec 2020

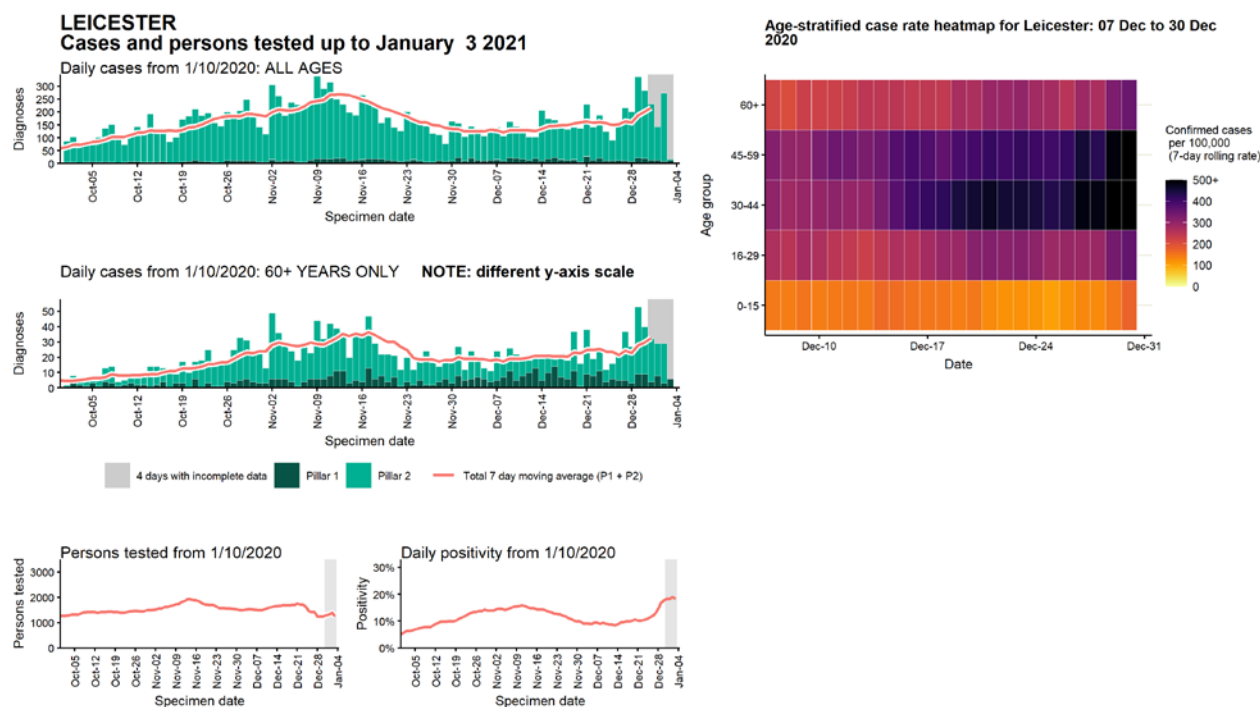


Data from SGSS. Produced by Outbreak Surveillance Team, PHE

Case numbers, testing numbers and positivity, Kettering : 01 Sep to 03 Jan 2021

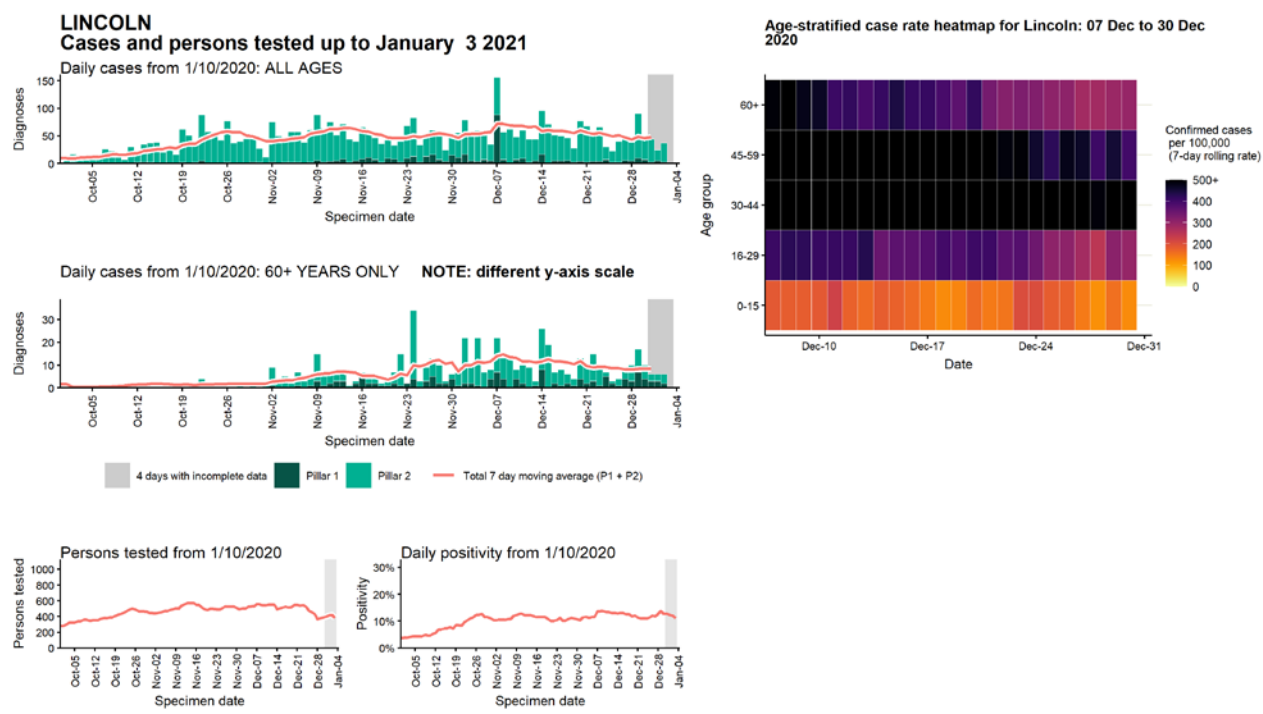


Case numbers, testing numbers and positivity, Leicester : 01 Sep to 03 Jan 2021



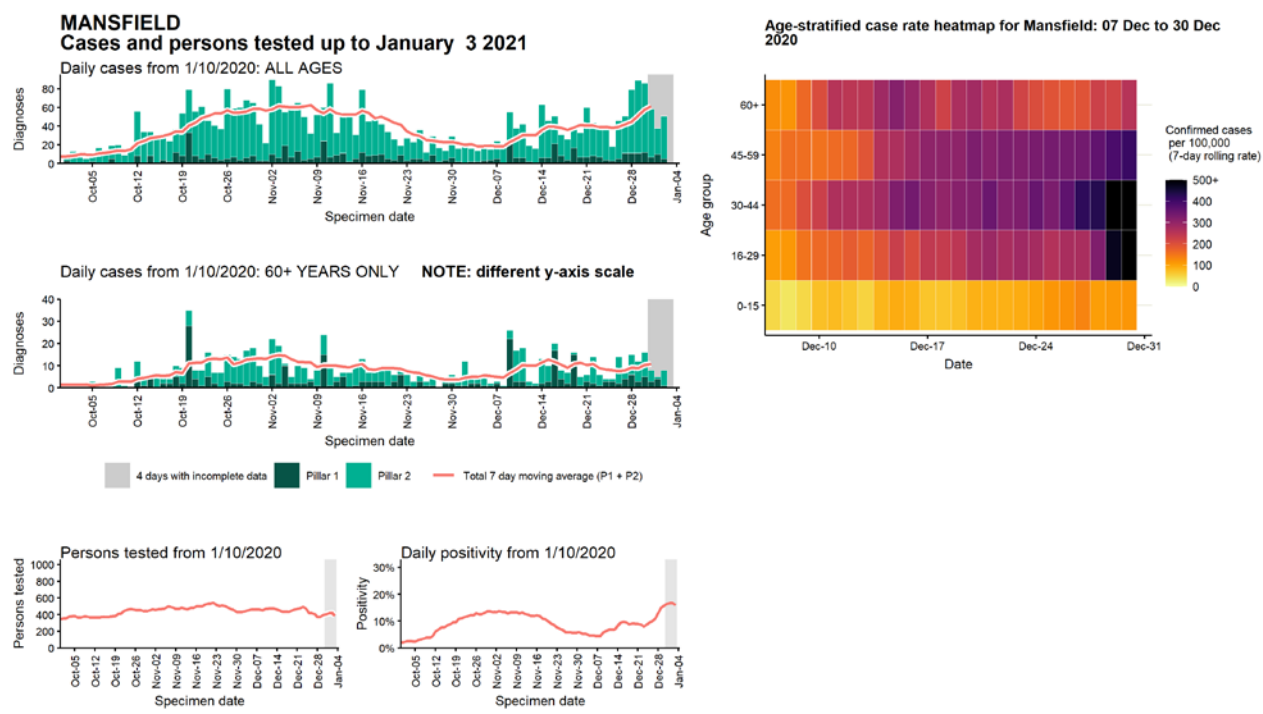
Data from SGSS. Produced by Outbreak Surveillance Team, PHE

Case numbers, testing numbers and positivity, Lincoln : 01 Sep to 03 Jan 2021



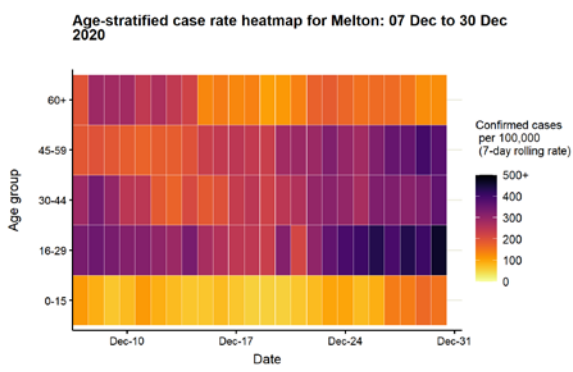
Data from SGSS. Produced by Outbreak Surveillance Team, PHE

Case numbers, testing numbers and positivity, Mansfield : 01 Sep to 03 Jan 2021



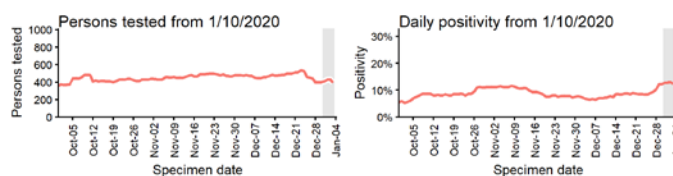
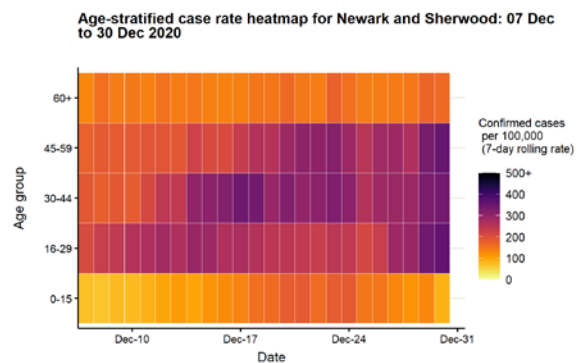
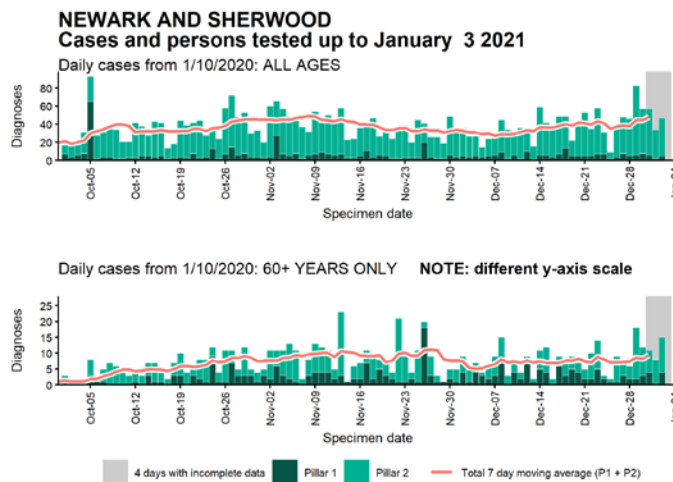
Data from SGSS. Produced by Outbreak Surveillance Team, PHE

Case numbers, testing numbers and positivity, Melton : 01 Sep to 03 Jan 2021



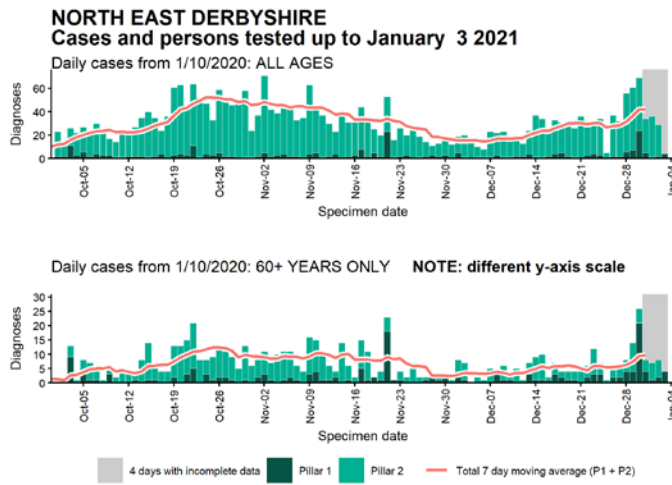
Data from SGSS. Produced by Outbreak Surveillance Team, PHE

Case numbers, testing numbers and positivity, Newark and Sherwood : 01 Sep to 03 Jan 2021

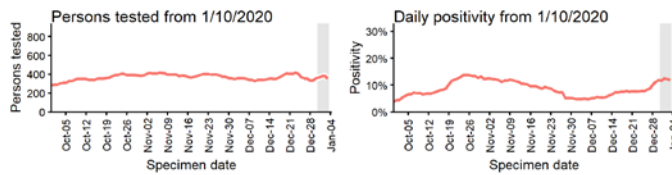
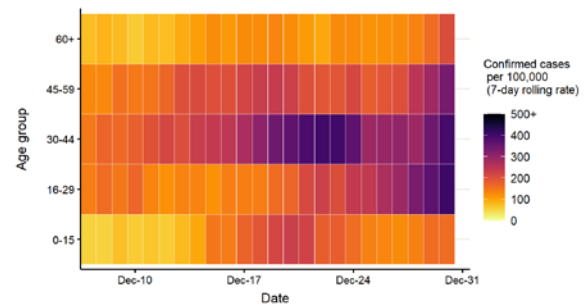


Data from SGSS. Produced by Outbreak Surveillance Team, PHE

Case numbers, testing numbers and positivity, North East Derbyshire : 01 Sep to 03 Jan 2021

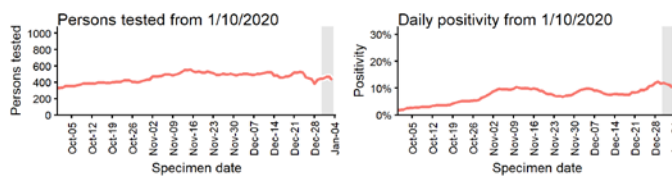
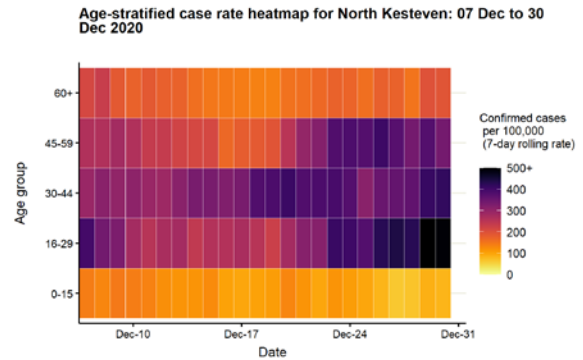
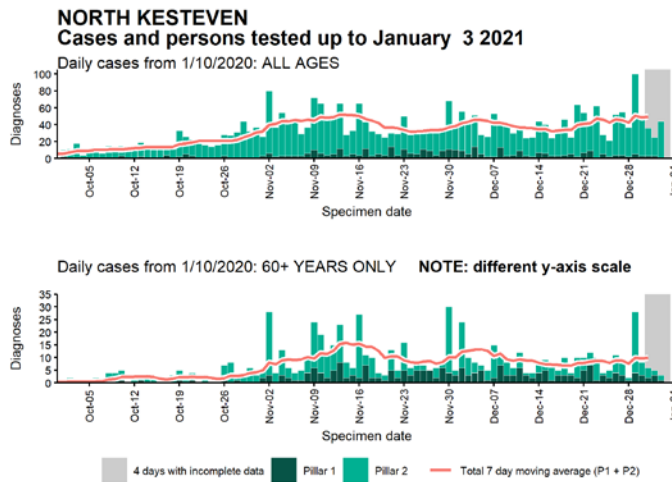


Age-stratified case rate heatmap for North East Derbyshire: 07 Dec to 30 Dec 2020



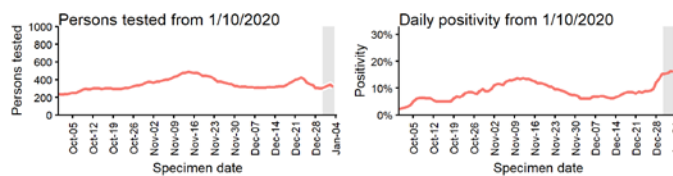
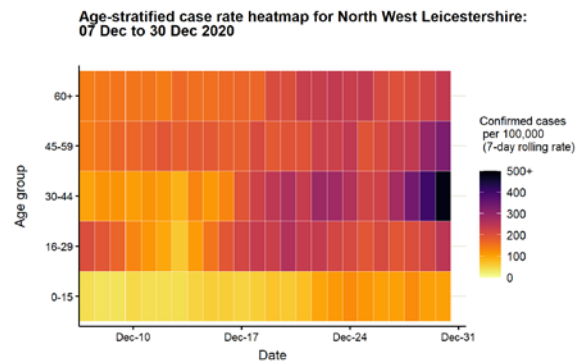
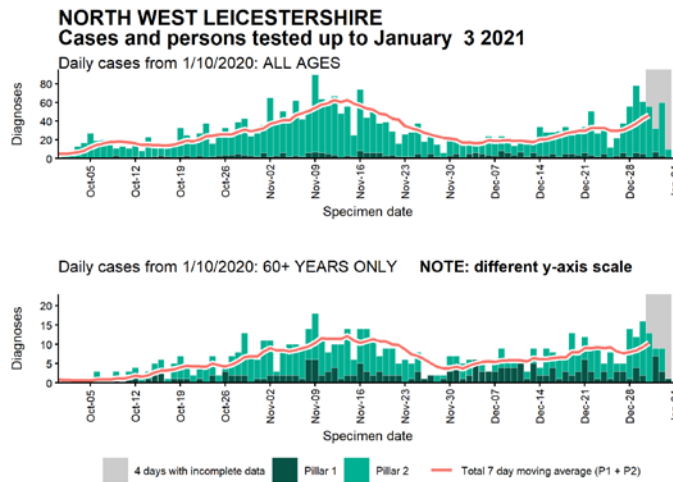
Data from SGSS. Produced by Outbreak Surveillance Team, PHE

Case numbers, testing numbers and positivity, North Kesteven : 01 Sep to 03 Jan 2021



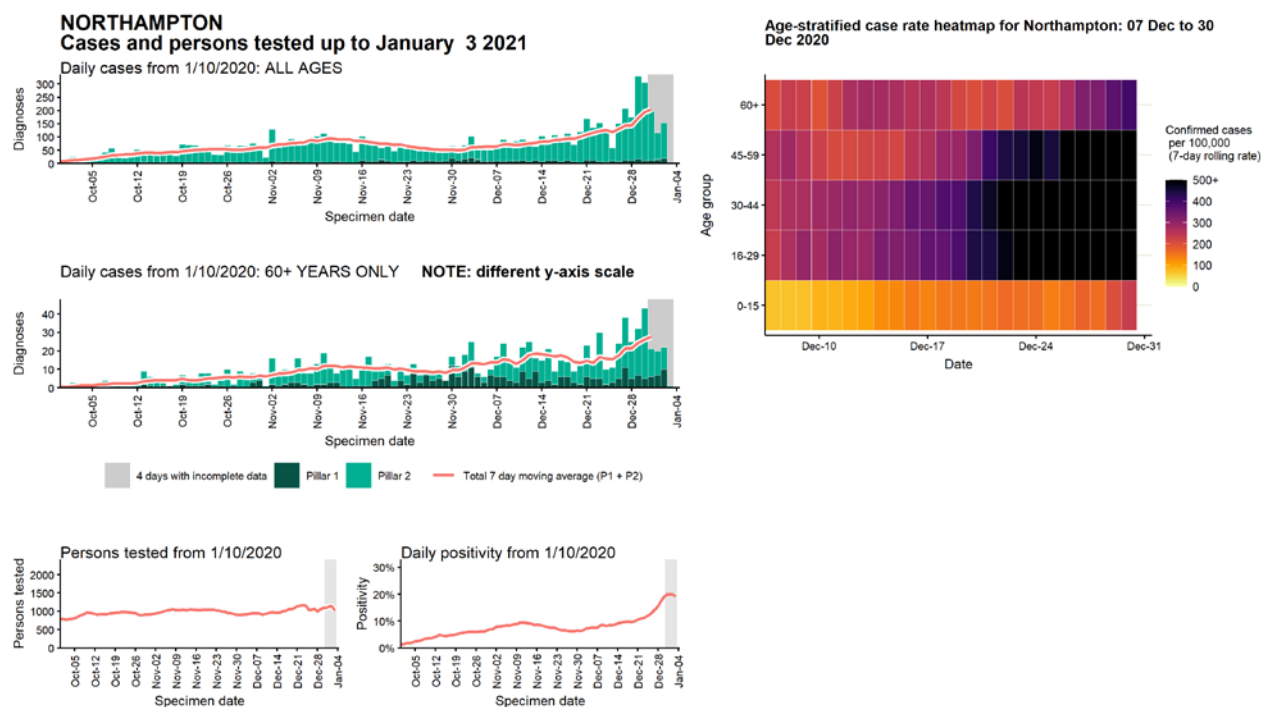
Data from SGSS. Produced by Outbreak Surveillance Team, PHE

Case numbers, testing numbers and positivity, North West Leicestershire : 01 Sep to 03 Jan 2021



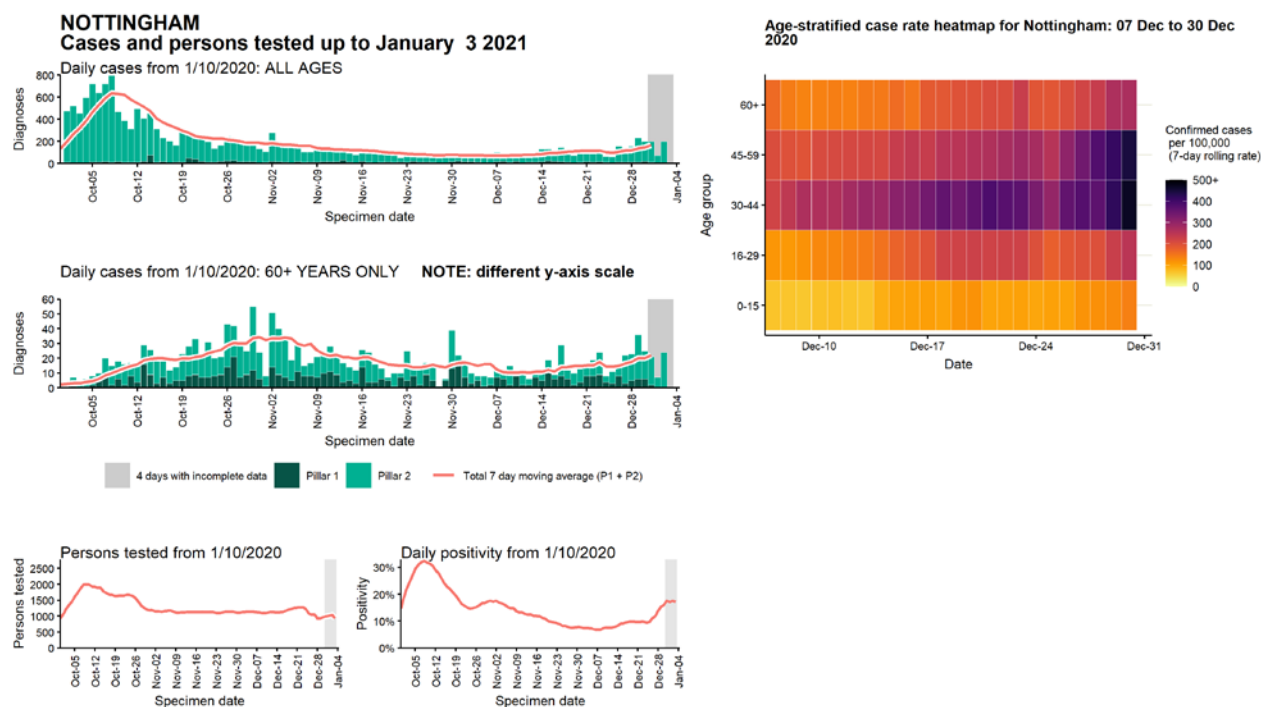
Data from SGSS. Produced by Outbreak Surveillance Team, PHE

Case numbers, testing numbers and positivity, Northampton : 01 Sep to 03 Jan 2021



Data from SGSS. Produced by Outbreak Surveillance Team, PHE

Case numbers, testing numbers and positivity, Nottingham : 01 Sep to 03 Jan 2021



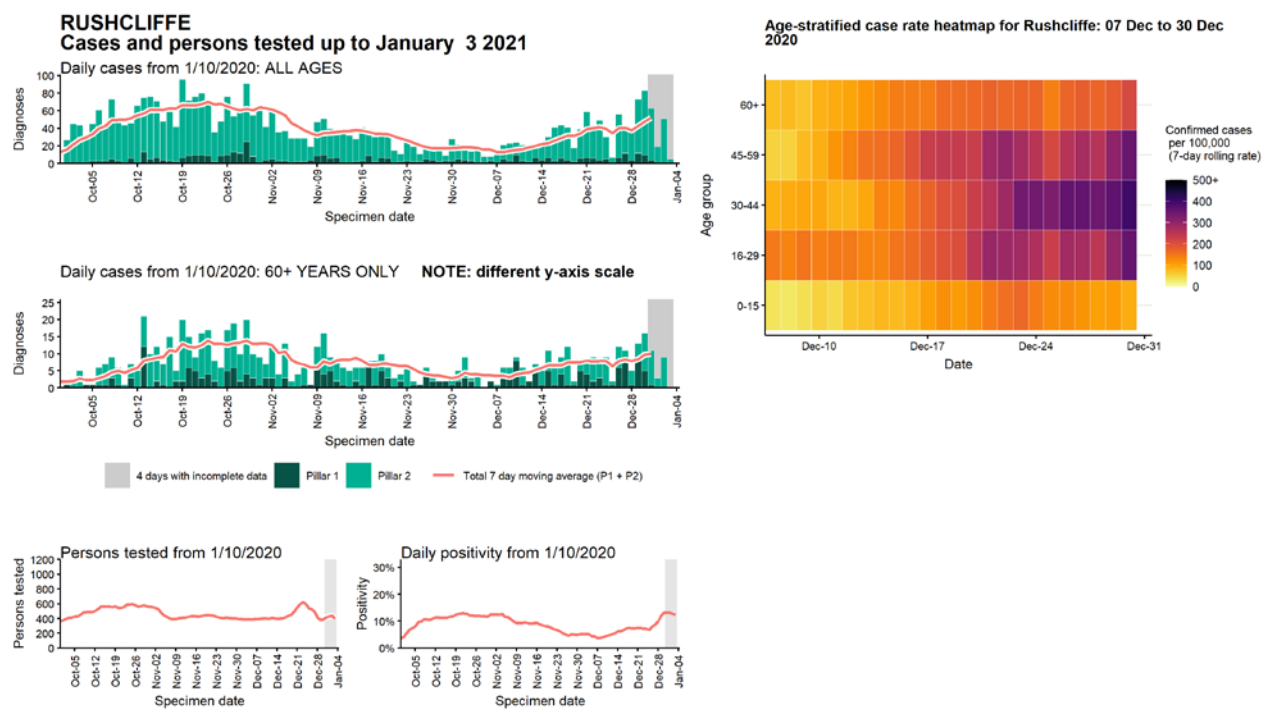
Data from SGSS. Produced by Outbreak Surveillance Team, PHE

Case numbers, testing numbers and positivity, Oadby and Wigston : 01 Sep to 03 Jan 2021



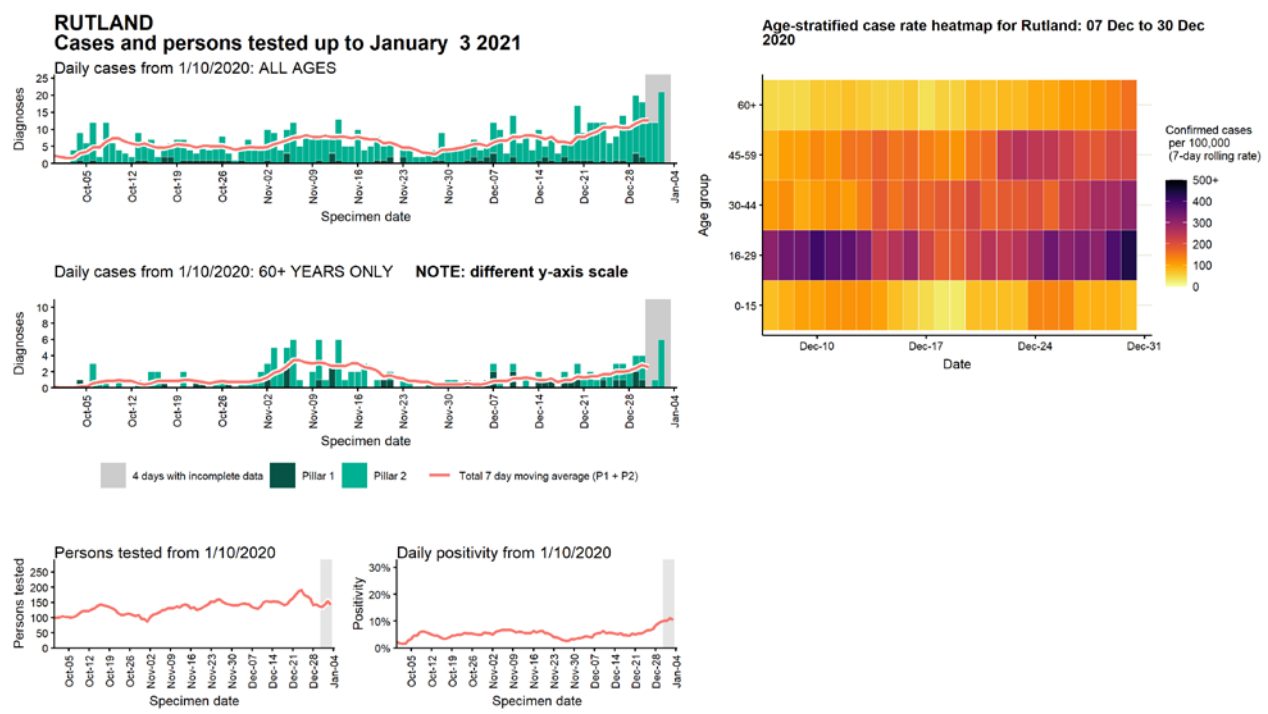
Data from SGSS. Produced by Outbreak Surveillance Team, PHE

Case numbers, testing numbers and positivity, Rushcliffe : 01 Sep to 03 Jan 2021



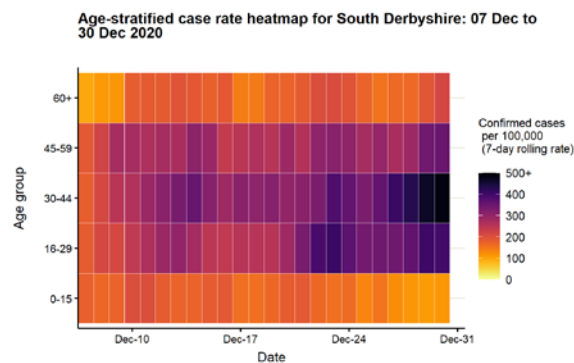
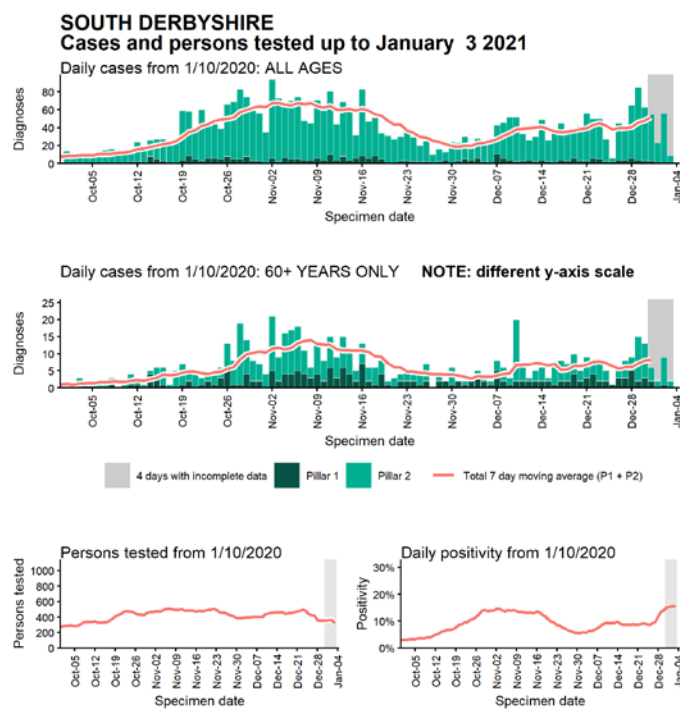
Data from SGSS. Produced by Outbreak Surveillance Team, PHE

Case numbers, testing numbers and positivity, Rutland : 01 Sep to 03 Jan 2021



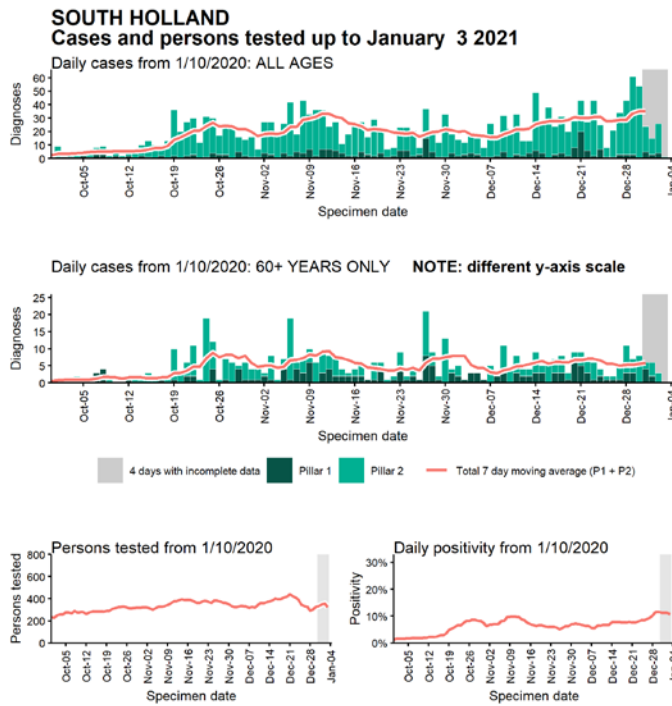
Data from SGSS. Produced by Outbreak Surveillance Team, PHE

Case numbers, testing numbers and positivity, South Derbyshire : 01 Sep to 03 Jan 2021

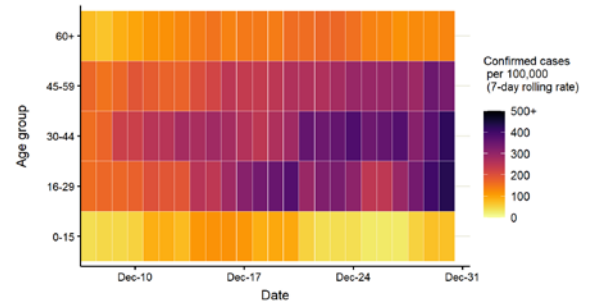


Data from SGSS. Produced by Outbreak Surveillance Team, PHE

Case numbers, testing numbers and positivity, South Holland : 01 Sep to 03 Jan 2021

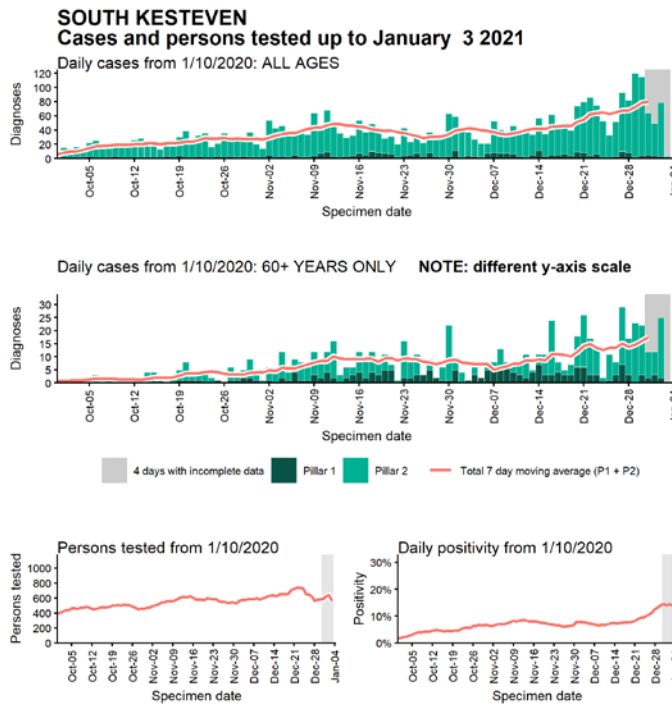


Age-stratified case rate heatmap for South Holland: 07 Dec to 30 Dec 2020

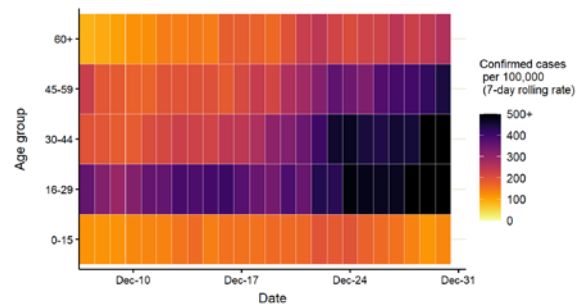


Data from SGSS. Produced by Outbreak Surveillance Team, PHE

Case numbers, testing numbers and positivity, South Kesteven : 01 Sep to 03 Jan 2021

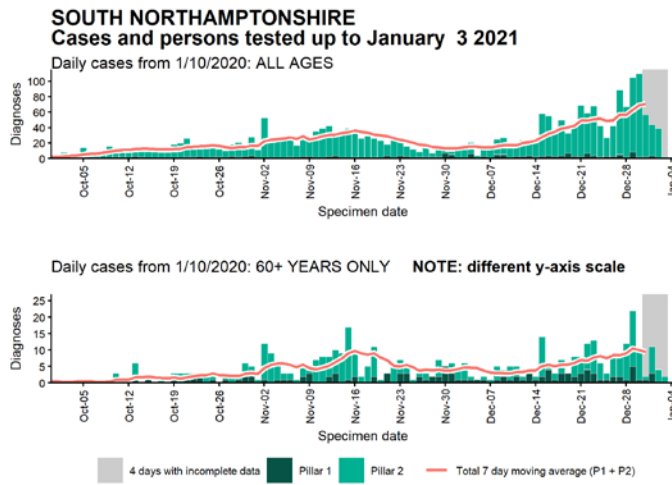


Age-stratified case rate heatmap for South Kesteven: 07 Dec to 30 Dec 2020

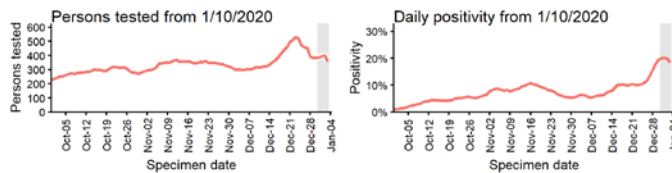
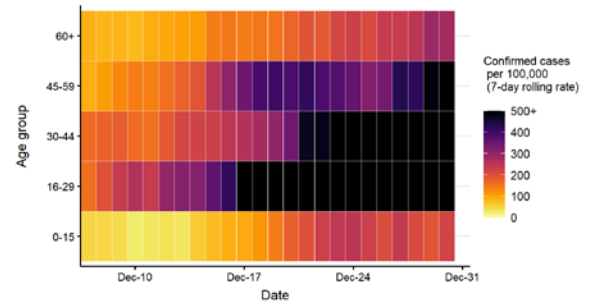


Data from SGSS. Produced by Outbreak Surveillance Team, PHE

Case numbers, testing numbers and positivity, South Northamptonshire : 01 Sep to 03 Jan 2021

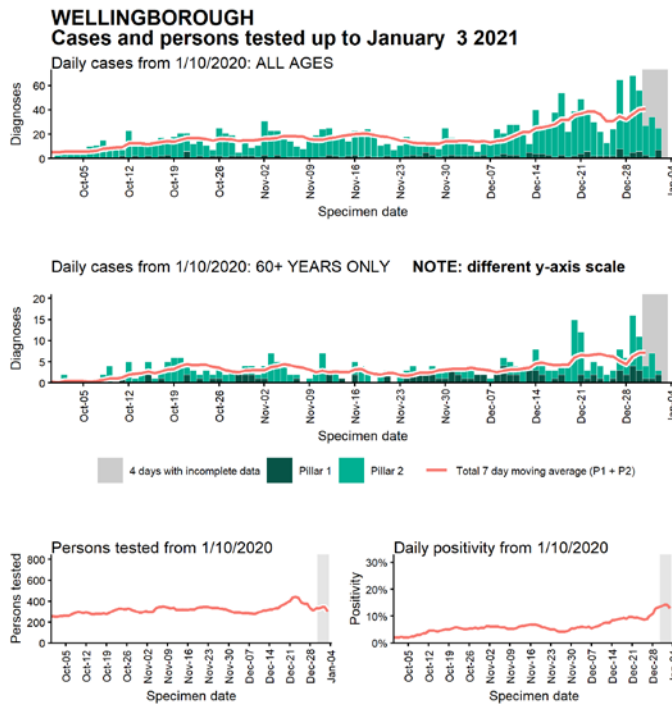


Age-stratified case rate heatmap for South Northamptonshire: 07 Dec to 30 Dec 2020

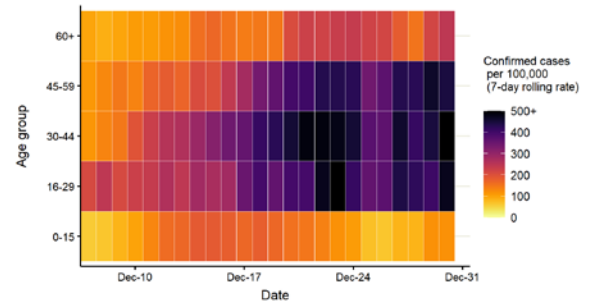


Data from SGSS. Produced by Outbreak Surveillance Team, PHE

Case numbers, testing numbers and positivity, Wellingborough : 01 Sep to 03 Jan 2021



Age-stratified case rate heatmap for Wellingborough: 07 Dec to 30 Dec 2020



Data from SGSS. Produced by Outbreak Surveillance Team, PHE

Case numbers, testing numbers and positivity, West Lindsey : 01 Sep to 03 Jan 2021



Data from SGSS. Produced by Outbreak Surveillance Team, PHE

© Crown copyright 2020

www.gov.uk/dhsc

This publication is licensed under the terms of the Open Government Licence v3.0 except where otherwise stated. To view this licence, visit nationalarchives.gov.uk/doc/open-government-licence/version/3

Where we have identified any third party copyright information you will need to obtain permission from the copyright holders concerned.

