

Defence Clothing Catalogue



**SECTION 1-6: DMC CG
COMBAT CLOTHING**

RELEASED: SEPT 2020

**Section AT1-6 DMC CG
Combat Clothing**

CONTENTS

Click on page number to go to that item

PERSONAL CLOTHING SYSTEM (PCS) ITEMS.....	3
MULTI TERRAIN PATTERN (MTP) ITEMS - PCS	3
JACKET, COMBAT, MTP, Insect Repellent Treated and Untreated	3
TROUSERS, COMBAT, MTP, Insect Repellent Treated and Untreated	4
TROUSERS, COMBAT, MTP Insect Repellent Treated and Untreated, Continued.....	5
JACKET, COMBAT, Blue Camouflage, Insect Repellent Treated and Untreated	6
TROUSERS, COMBAT, Blue Camouflage, Insect Repellent Treated and Untreated	7
TROUSERS, COMBAT Blue Camouflage, Insect Repellent Treated and Untreated Continued	8
SHIRT, ENHANCED PROTECTION, COMBAT, Under Body Armour, Combat, MTP (EP UBACS)	9
SHIRT, COMBAT Under Body Armour, Combat, Blue Camouflage	10
SHORTS, COMBAT, MTP.....	11
SHORTS, COMBAT Multi-Terrain Patterned, Lightweight, Continued	12
SHORTS, COMBAT, Blue Camouflage	13
SHORTS, COMBAT Blue Camouflage, Continued	14
SMOCK, COMBAT, Windproof, MTP.....	15
SMOCK, WINDPROOF, Blue Camouflage	16
JACKET, COMBAT, Wet Weather, MTP.....	17
CAP, CAMOUFLAGE PATTERN, MTP	18
HAT, COMBAT, TROPICAL, MTP	19
BLANKING PLATE, MTP	20
BLANKING PLATE, MTP with Red Cross badge.....	20
BLANKING PLATE, MTP with RAF logo badge.....	21
BLANKING PLATE, Blue Camouflage	21
NON MTP ITEMS - PCS	22
SHIRT, "T" COMBAT, Anti-Static, Light Olive	22
SHIRT, "T" COMBAT, Anti-Static, Black	22
UNDERSHORTS, Anti-Microbial, Black.....	23
DRAWERS, MEN'S, Pelvic Protection (Tier 1), Anti-microbial, Black.....	23
DRAWERS, WOMEN'S, Pelvic Protection (Tier 1), Anti-microbial, Black	24
DRAWERS, THERMAL UNDERWEAR, Light Olive	24
VEST, Thermal, Light Olive	25
UNDERSHIRT, COMBAT, Thermal, Light Olive	26
SMOCK, LIGHTWEIGHT, THERMAL, Light Olive	26
JACKET, THERMAL, Light Olive.....	27
TROUSERS, Thermal, Light Olive with integrated stuff sack	27
NON - PERSONAL CLOTHING SYSTEM (PCS) ITEMS IN MTP	28
COVER, COMBAT HELMET, MK6, MTP.....	28
COVER, COMBAT HELMET GS, MK7, MTP	28
COVER, COMBAT HELMET.....	29
SMOCK, PARACHUTIST'S, MTP	30
SMOCK, SNIPER'S, MTP	31
SHIRT, BARRACK, MTP.....	32
SPECIAL FORCES CLOTHING.....	33
VEST, ASSAULT SUIT, FR Dark Navy or Black.....	33
DRAWERS, Assault Suit, FR, Dark Navy or Black	33
BALACLAVA, ASSAULT SUIT, FR,	34
Dark Navy or Black	34
GLOVES, ASSAULT SUIT, FR Dark Navy or Black	34
COVERALLS, Assault Suit, FR, Dark Navy or Black	35
TROUSERS, COMBAT, Windproof, MTP	36
SMOCK, COMBAT, Windproof, MTP	37
SNOW CONDITION ITEMS.....	38
PARKA, CAMOUFLAGE, White.....	38
TROUSERS, CAMOUFLAGE, White	38
COVER, RUCKSACK, White.....	39

**Section AT1-6 DMC CG
Combat Clothing**

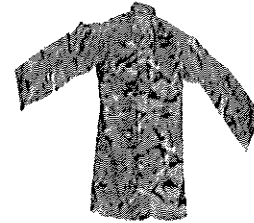
COVER, COMBAT HELMET, MK6, White	39
COVER, COMBAT HELMET, GS, MK7, White	40
ADDITIONAL HELMET COVERS	41
COVER, COMBAT HELMET, MK6, High Visibility	41
COVER, COMBAT HELMET GS, MK7, High Visibility Yellow	41
COVER, COMBAT HELMET, MK6, UN Blue	42
COVER, COMBAT HELMET, GS, MK7, UN Blue	42
PROTECTIVE ITEMS	43
FACE MASK, Extreme Cold Weather, White, FR	43
HEADNET, Camouflage, Olive	43
HEADOVER, Light Olive	44
INSECT NET, Head, Olive	44
SCARF, SHEMAGH, Light Beige	44
RAG, SWEAT, TROPICAL, Tropical Green	45
UNDERSHIRT, COMBAT, Thermal, Black	45
HYGIENE ITEMS	46
NET, WASHING, for Soiled Linen	46
TOWEL, BATH, Olive	46
HEAD ITEMS	47
CAP, CAMOUFLAGE PATTERN, Blue Camouflage	47
COVER, COMBAT HELMET, MK6, Navy Blue	48
COVER, COMBAT HELMET, GS, MK7, Navy Blue	48
ARMoured FIGHTING VEHICLE (AFV) ITEMS	49
VEST, Armoured Fighting Vehicle, FR, Beige	49
LONG JOHNS, AFV Crewman's FR, Olive	49
BALACLAVA, Flame Resistant, Armoured Fighting Vehicle, Olive	50
GLOVES, AFV, Crewman's FR, Olive	50
COVERALLS, COMBAT VEHICLE, AFV Crewman, FR, Beige	51
COVERALLS, COMBAT VEHICLE, AFV Crewman, TRAINING, MTP, Not FR	52
MATERNITY CLOTHING	53
SHIRT, BARRACK, MATERNITY Multi Terrain Pattern	53
TROUSERS, COMBAT, BARRACK, MATERNITY, Multi Terrain Pattern	54
MATERNITY EXTENDER, Slacks & Skirt,	55
MATERNITY EXTENDER, Slacks & Skirt,	55
OTHER CLOTHING	56
TROUSERS, EXTREME COLD WEATHER, Thermally Insulated, Olive with Stuff Sack	56

Section AT1-6 DMC CG
Combat Clothing

PERSONAL CLOTHING SYSTEM (PCS) ITEMS

MULTI TERRAIN PATTERN (MTP) ITEMS - PCS

**JACKET, COMBAT,
MTP, Insect Repellent Treated and
Untreated**



NSN:	8415-99-597-0428	DMC:	CG
Specification:	DC/MS/6603-1 @ D02298A	D of Q:	Each
		PPQ:	001

Description: Jacket Combat. MTP Insect repellent treated. Front slide fastener opening with rank strap, stand collar, chest pocket with internal compass pocket and becket, chest pocket with internal pen pocket bellows pocket on sleeves, with blanking plates, adjustable cuffs.

Size Range: 21

<u>NSN</u>	<u>HEIGHT (cm)</u>	<u>CHEST (cm)</u>
8415-99-597-0428	160	88
8415-99-597-0429	160	96
8415-99-597-0430	160	104
8415-99-597-0431	170	88
8415-99-597-0432	170	96
8415-99-597-0433	170	104
8415-99-597-0434	170	112
8415-99-597-0435	180	96
8415-99-597-0436	180	104
8415-99-597-0437	180	112
8415-99-597-0438	180	120
8415-99-597-0439	190	96
8415-99-597-0440	190	104
8415-99-597-0441	190	112
8415-99-597-0442	190	120
8415-99-597-0443	200	104
8415-99-597-0444	200	112
8415-99-597-0445	200	120
8415-99-597-0446	200	128
8415-99-597-0447	Outsize	
8415-99-597-0448	Outsize Untreated version	

Additional Information: Part of the Personal Clothing System (PCS)

**Section AT1-6 DMC CG
Combat Clothing**

**TROUSERS, COMBAT,
MTP, Insect Repellent Treated and
Untreated**



NSN:	8415-99-317-8270	DMC:	CG
Specification:	DC/MS/6602-1 @ D01754A	D of Q:	Each
		PPQ:	001

Description: Trousers Combat. MTP. Insect Repellent Treated and Untreated. Side waist adjusters. Heavier material for reinforced Seat/crotch panel. Internal security pocket. Side pockets. Back hip pocket. Bellows thigh pockets. Belt loops. Draw cord in hem bottom.

Size Range: 36

<u>NSN</u>	<u>INSIDE LEG (cm)</u>	<u>WAIST (cm)</u>	<u>SEAT (cm)</u>
8415-99-317-8270	70	72	88
8415-99-317-8271	70	76	92
8415-99-317-8272	70	80	96
8415-99-317-8273	75	68	84
8415-99-317-8274	75	72	88
8415-99-317-8275	75	76	92
8415-99-317-8276	75	80	96
8415-99-317-8277	75	84	100
8415-99-317-8278	75	88	104
8415-99-317-8279	75	92	108
8415-99-317-8280	80	72	88
8415-99-317-8281	80	76	92
8415-99-317-8282	80	80	96
8415-99-317-8283	80	84	100
8415-99-317-8284	80	88	104
8415-99-317-8285	80	92	108
8415-99-317-8286	80	96	112
8415-99-317-8287	80	100	116
8415-99-317-8288	80	104	120
8415-99-317-8289	85	80	96
8415-99-317-8290	85	84	100
8415-99-317-8291	85	88	104
8415-99-317-8292	85	92	108
8415-99-317-8293	85	96	112
8415-99-317-8294	85	100	116
8415-99-317-8295	85	104	120
8415-99-317-8296	85	108	124
8415-99-317-8297	85	112	128

Section AT1-6 DMC CG
Combat Clothing

**TROUSERS, COMBAT,
MTP Insect Repellent Treated and
Untreated, Continued**



NSN:	DMC: CG
Specification: DC/MS/6602-1 @ D01754A	D of Q: Each
	PPQ: 001

Description: Trousers Combat. MTP. Insect Repellent Treated and Untreated. Side waist adjusters. Heavier material for reinforced Seat/crotch panel. Internal security pocket. Side pockets. Back hip pocket. Bellows thigh pockets. Belt loops. Draw cord in hem bottom.

Size Range: 38

<u>NSN</u>	<u>INSIDE LEG (cm)</u>	<u>WAIST (cm)</u>	<u>SEAT (cm)</u>
8415-99-317-8298	90	92	108
8415-99-317-8299	90	96	112
8415-99-317-8300	90	100	116
8415-99-317-8301	90	104	120
8415-99-317-8302	90	108	124
8415-99-317-8303	90	112	128
8415-99-317-8304	Outsize		
8415-99-410-4582	Outsize - Untreated Garments		

Additional Information: Part of the Personal Clothing System (PCS)

Section AT1-6 DMC CG
Combat Clothing

**JACKET, COMBAT,
Blue Camouflage, Insect Repellent Treated
and Untreated**

NSN: 8415-99-597-0910	DMC: CG
Specification: DC/MS/6603-1 D02298ATG	D of Q: Each
	PPQ: 001

Description: Jacket Combat. Blue Camouflage, Insect repellent treated and untreated. Front slide fastener opening with rank strap, stand collar, various pockets.

Size Range: 21

<u>NSN</u>	<u>HEIGHT (cm)</u>	<u>CHEST (cm)</u>
8415-99-597-0910	160	88
8415-99-597-0911	160	96
8415-99-597-0912	160	104
8415-99-597-0913	170	88
8415-99-597-0914	170	96
8415-99-597-0915	170	104
8415-99-597-0916	170	112
8415-99-597-0917	180	96
8415-99-597-0918	180	104
8415-99-597-0919	180	112
8415-99-597-0920	180	120
8415-99-597-0921	190	96
8415-99-597-0922	190	104
8415-99-597-0923	190	112
8415-99-597-0924	190	120
8415-99-597-0925	200	104
8415-99-597-0926	200	112
8415-99-597-0927	200	120
8415-99-597-0928	200	128
8415-99-597-0929		Outsize
8415-99-597-0930		Outsize Untreated version

Additional Information: Part of the Personal Clothing System (PCS)

**Section AT1-6 DMC CG
Combat Clothing**

**TROUSERS, COMBAT,
Blue Camouflage, Insect Repellent Treated
and Untreated**

NSN: 8415-99-752-1536	DMC: CG
Specification: DC/MS/6602-1 D01742A	D of Q: Each
	PPQ: 001

Description: Trousers Combat. Blue Camouflage. Insect Repellent Treated and Untreated. Side waist adjusters. Heavier material for reinforced Seat/crotch panel. Internal security pocket. Side pockets. Back hip pocket. Bellows thigh pockets. Belt loops. Draw cord in hem bottom.

Size Range: 36

<u>NSN</u>	<u>INSIDE LEG (cm)</u>	<u>WAIST (cm)</u>	<u>SEAT (cm)</u>
8415-99-752-1536	70	72	88
8415-99-752-1537	70	76	92
8415-99-752-1538	70	80	96
8415-99-752-1539	75	68	84
8415-99-752-1540	75	72	88
8415-99-752-1541	75	76	92
8415-99-752-1542	75	80	96
8415-99-752-1543	75	84	100
8415-99-752-1544	75	88	104
8415-99-752-1545	75	92	108
8415-99-752-1546	80	72	88
8415-99-752-1547	80	76	92
8415-99-752-1548	80	80	96
8415-99-752-1549	80	84	100
8415-99-752-1550	80	88	104
8415-99-752-1551	80	92	108
8415-99-752-1552	80	96	112
8415-99-752-1553	80	100	116
8415-99-752-1554	80	104	120
8415-99-752-1555	85	90	96
8415-99-752-1556	85	84	100
8415-99-752-1557	85	88	104
8415-99-752-1558	85	92	108
8415-99-752-1559	85	96	112
8415-99-752-1560	85	100	116
8415-99-752-1561	85	104	120
8415-99-752-1562	85	108	124

Section AT1-6 DMC CG
Combat Clothing

TROUSERS, COMBAT
Blue Camouflage, Insect Repellent Treated
and Untreated Continued

NSN:	DMC: CG
Specification: DC/MS/6602-1 @ D01754A	D of Q: Each
	PPQ: 001

Description: Trousers Combat. Blue Camouflage. Insect Repellent Treated and Untreated. Side waist adjusters. Heavier material for reinforced Seat/crotch panel. Internal security pocket. Side pockets. Back hip pocket. Bellows thigh pockets. Belt loops. Draw cord in hem bottom.

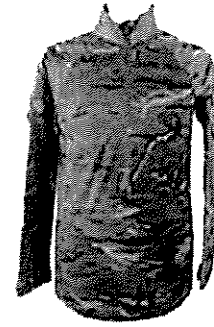
Size Range: 38

<u>NSN</u>	<u>INSIDE LEG (cm)</u>	<u>WAIST (cm)</u>	<u>SEAT (cm)</u>
8415-99-752-1563	85	112	128
8415-99-752-1564	90	92	108
8415-99-752-1565	90	96	112
8415-99-752-1566	90	100	116
8415-99-752-1567	90	104	120
8415-99-752-1568	90	108	124
8415-99-752-1569	90	112	128
8415-99-752-1570	Outsize		
8415-99-752-1571	Outsize - Untreated Garments		

Additional Information: Part of the Personal Clothing System (PCS)

**Section AT1-6 DMC CG
Combat Clothing**

**SHIRT, ENHANCED PROTECTION,
COMBAT, Under Body Armour, Combat,
MTP (EP UBACS)**



NSN:	8415-99-488-8932	DMC:	CG
Specification:	DC/MS/6584-2 @ D02223	D of Q:	Each
		PPQ:	001

Description: Shirt, Enhanced protection Under Body Armour Combat Shirt with Enhanced Protection. MTP. Insect Repellent treated. T Shirt fabric body, Combat jacket fabric sleeves and collar. Short front slide fastener opening. Stand collar with felt padding, Bellows pocket on sleeves. Dipped hem.

Size Range: 8

<u>NSN</u>	<u>SIZE (cm)</u>
8415-99-488-8932	Small (160/80)
8415-99-488-8933	Medium (170/90)
8415-99-488-8934	Large (180/100)
8415-99-488-8935	Large / Wide (180/110)
8415-99-488-8936	X Large (190/110)
8415-99-488-8937	XX Large (200/120)
8415-99-488-8938	Outsize Treated
8415-99-488-8939	Outsize Untreated

Additional Information: Part of the Personal Clothing System (PCS)

**Section AT1-6 DMC CG
Combat Clothing**

**SHIRT, COMBAT
Under Body Armour, Combat, Blue
Camouflage**

NSN: 8415-99-155-6747	DMC: CG
Specification: DC/MS/6584-2 D02223TG	D of Q: Each
	PPQ: 001

Description: Shirt, Enhanced protection. Under Body Armour Combat Shirt with Enhanced Protection. Blue Camouflage, Insect Repellent treated. Short front slide fastener opening. Stand collar with felt padding, Bellows pocket on sleeves. Dipped hem.

Size Range: 8	
<u>NSN</u>	<u>SIZE (cm)</u>
8415-99-155-6747	Small (160/80)
8415-99-155-6748	Medium (170/90)
8415-99-155-6749	Large (180/100)
8415-99-155-6750	Large / Wide (180/110)
8415-99-155-6751	X Large (190/110)
8415-99-155-6752	XX Large (200/120)
8415-99-155-6753	Outsize Treated
8415-99-155-6754	Outsize Untreated

Additional Information: Part of the Personal Clothing System (PCS)

**Section AT1-6 DMC CG
Combat Clothing**

**SHORTS, COMBAT,
MTP**



NSN:	8405-99-342-4195	DMC:	CG
Specification:	DC/MS/5913 D02864	D of Q:	Each
		PPQ:	001

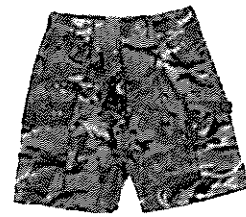
Description: Shorts Combat. MTP. Two front slash pockets, two side pockets and one rear hip pocket. Side waist adjustment.

Size Range: 33

<u>NSN</u>	<u>INSIDE LEG (cm)</u>	<u>WAIST (cm)</u>	<u>SEAT (cm)</u>
8405-99-342-4195	24	68	84
8405-99-342-4196	24	72	88
8405-99-342-4197	24	76	92
8405-99-342-4198	24	80	96
8405-99-342-4199	24	84	100
8405-99-342-4200	24	88	104
8405-99-342-4201	24	92	108
8405-99-342-4202	27	72	88
8405-99-342-4203	27	76	92
8405-99-342-4204	27	80	96
8405-99-342-4205	27	84	100
8405-99-342-4206	27	88	104
8405-99-342-4207	27	92	108
8405-99-342-4208	27	96	112
8405-99-342-4209	27	100	116
8405-99-342-4210	27	104	120
8405-99-342-4211	30	76	92
8405-99-342-4212	30	80	96
8405-99-342-4213	30	84	100
8405-99-342-4214	30	88	104
8405-99-342-4215	30	92	108
8405-99-342-4216	30	96	112
8405-99-342-4217	30	100	116
8405-99-342-4218	30	104	120
8405-99-342-4219	30	108	124
8405-99-342-4220	30	112	128

Section AT1-6 DMC CG
Combat Clothing

SHORTS, COMBAT
Multi-Terrain Patterned, Lightweight,
Continued



NSN:	DMC: CG
Specification: DC/MS/5913 @ D00190 TG	D of Q: Each
	PPQ: 001

Description: Shorts Combat. MTP. Two front slash pockets, two side pockets and one rear hip pocket. Side waist adjustment.

Size Range: 33

<u>NSN</u>	<u>INSIDE LEG (cm)</u>	<u>WAIST (cm)</u>	<u>SEAT (cm)</u>
8405-99-342-4221	33	92	108
8405-99-342-4222	33	96	112
8405-99-342-4223	33	100	116
8405-99-342-4224	33	104	120
8405-99-342-4225	33	108	124
8405-99-342-4226	33	112	128
8405-99-342-4227		Outsize	

Additional Information:

Section AT1-6 DMC CG
Combat Clothing

**SHORTS, COMBAT,
Blue Camouflage**

NSN: 8405-99-435-3997	DMC: CG
Specification: DC/MS/5913 D02864TG	D of Q: Each
	PPQ: 001

Description: Shorts Combat. Blue Camouflage. Two front slash pockets, two side pockets and one rear hip pocket. Side waist adjustment.

Size Range: 33

<u>NSN</u>	<u>INSIDE LEG (cm)</u>	<u>WAIST (cm)</u>	<u>SEAT (cm)</u>
8405-99-435-3997	24	68	84
8405-99-435-3998	24	72	88
8405-99-435-3999	24	76	92
8405-99-435-4000	24	80	96
8405-99-435-4001	24	84	100
8405-99-435-4002	24	88	104
8405-99-435-4003	24	92	108
8405-99-435-4004	27	72	88
8405-99-435-4005	27	76	92
8405-99-435-4006	27	80	96
8405-99-435-4007	27	84	100
8405-99-435-4008	27	88	104
8405-99-435-4009	27	92	108
8405-99-435-4010	27	96	112
8405-99-435-4011	27	100	116
8405-99-435-4012	27	104	120
8405-99-435-4013	30	76	92
8405-99-435-4014	30	80	96
8405-99-435-4015	30	84	100
8405-99-435-4016	30	88	104
8405-99-435-4017	30	92	108
8405-99-435-4018	30	96	112
8405-99-435-4019	30	100	116
8405-99-435-4020	30	104	120
8405-99-435-4021	30	108	124
8405-99-435-4022	30	112	128

Section AT1-6 DMC CG
Combat Clothing

**SHORTS, COMBAT
Blue Camouflage, Continued**

NSN:	DMC: CG
Specification: DC/MS/5913 D00190 TG	D of Q: Each
	PPQ: 001

Description: Shorts Combat. Blue Camouflage. Two front slash pockets, two side pockets and one rear hip pocket. Side waist adjustment.

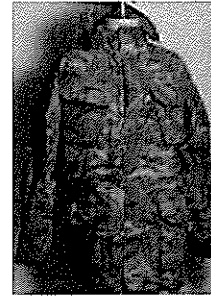
Size Range: 33

<u>NSN</u>	<u>INSIDE LEG (cm)</u>	<u>WAIST (cm)</u>	<u>SEAT (cm)</u>
8405-99-435-4023	33	92	108
8405-99-435-4024	33	96	112
8405-99-435-4025	33	100	116
8405-99-435-4026	33	104	120
8405-99-435-4027	33	108	124
8405-99-435-4028	33	112	128
8405-99-435-4029		Outsize	

Additional Information:

**Section AT1-6 DMC CG
Combat Clothing**

**SMOCK, COMBAT,
Windproof, MTP**



NSN:	8415-99-396-5988	DMC:	CG
Specification:	DC/MS/6592 @ D02396	D of Q:	Each
		PPQ:	001

Description: Smock Combat. MTP, Windproof. Front slide fastener opening with rank strap. Hood with peak, stowable in collar, Pit vents. Bellows pockets on sleeves and chest. Bellows hip pockets with hand warmer pockets behind. Draw cord in hood, hem and waist.

Size Range: 17

<u>NSN</u>	<u>HEIGHT (cm)</u>	<u>CHEST (cm)</u>
8415-99-396-5988	160	88
8415-99-396-5989	160	96
8415-99-396-5990	160	104
8415-99-396-5991	170	88
8415-99-396-5992	170	96
8415-99-396-5993	170	104
8415-99-396-5994	170	112
8415-99-396-5995	180	96
8415-99-396-5996	180	104
8415-99-396-5997	180	112
8415-99-396-5998	190	96
8415-99-396-5999	190	104
8415-99-396-6000	190	112
8415-99-396-6001	190	120
8415-99-396-6002	200	112
8415-99-396-6003	200	120
8415-99-396-6004	Outsize	

Additional Information: Part of the Personal Clothing System (PCS). Supersedes 8415-99-317-8380 to 8392. To be worn with Trousers Windproof MTP 8415-99-667-4294 to 4306

**Section AT1-6 DMC CG
Combat Clothing**

**SMOCK, WINDPROOF,
Blue Camouflage**

NSN: 8415-99-844-1308	DMC: CG
Specification: DC/MS/6592 D02396TG	D of Q: Each
	PPQ: 001

Description: Smock Combat. Blue Camouflage, Front Slide Fastener opening with rank strap, Touch & Close Opening, Attached hood with cowl.

Size Range: 17

<u>NSN</u>	<u>HEIGHT (cm)</u>	<u>CHEST (cm)</u>
8415-99-844-1308	160	88
8415-99-844-1309	160	96
8415-99-844-1310	160	104
8415-99-844-1311	170	88
8415-99-844-1312	170	96
8415-99-844-1313	170	104
8415-99-844-1314	170	112
8415-99-844-1315	180	96
8415-99-844-1316	180	104
8415-99-844-1317	180	112
8415-99-844-1318	190	96
8415-99-844-1319	190	104
8415-99-844-1320	190	112
8415-99-844-1321	190	120
8415-99-844-1322	200	112
8415-99-844-1323	200	120
8415-99-844-1324	Outsize	

Additional Information: Part of the Personal Clothing System (PCS).

**Section AT1-6 DMC CG
Combat Clothing**

**JACKET, COMBAT,
Wet Weather, MTP**



NSN:	8415-99-250-2484	DMC:	CG
Specification:	DC/MS/6585 @ D01743A	D of Q:	Each
		PPQ:	001

Description: Smock, Combat, MTP. Waterproof with moisture vapour permeable liner. Slide fastener with storm guard. Attached hood with cowl and draw cord. Bellows pocket with blanking plate on sleeves. Bellows chest pockets, Bellows hip pockets with hand warmer pocket. Internal chest pocket. Rank strap. draw cord at waist and hem. Underarm venting. Internal storm cuff.

Size Range: 17

<u>NSN</u>	<u>HEIGHT (cm)</u>	<u>CHEST (cm)</u>
8415-99-250-2484	160	88
8415-99-250-2485	160	96
8415-99-250-2486	160	104
8415-99-250-2487	170	88
8415-99-250-2488	170	96
8415-99-250-2489	170	104
8415-99-250-2490	170	112
8415-99-250-2491	180	96
8415-99-250-2492	180	104
8415-99-250-2493	180	112
8415-99-250-2494	190	96
8415-99-250-2495	190	104
8415-99-250-2496	190	112
8415-99-250-2497	190	120
8415-99-250-2498	200	112
8415-99-250-2499	200	120
8415-99-250-2500		Outsize

Additional Information: Part of Personal Clothing System (PCS) For use in cold/wet weather.

Section AT1-6 DMC CG
Combat Clothing

**CAP, CAMOUFLAGE PATTERN,
MTP**



NSN:	8415-99-915-8224	DMC:	CG
Specification:	DC/MS/3671 D02865	D of Q:	Each
		PPQ:	001

Description: Cap, MTP. With semi-stiff peak, and short flap to cover back of neck and ears. Ventilation eyelets.

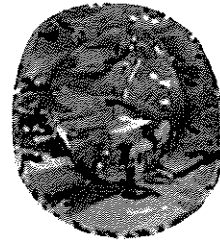
Size Range: 17

<u>NSN</u>	<u>SIZE (cm)</u>
8415-99-915-8224	48
8415-99-915-8225	49
8415-99-915-8226	50
8415-99-915-8227	51
8415-99-915-8228	52
8415-99-915-8229	53
8415-99-915-8230	54
8415-99-915-8231	55
8415-99-915-8232	56
8415-99-915-8233	57
8415-99-915-8234	58
8415-99-915-8235	59
8415-99-915-8236	60
8415-99-915-8237	61
8415-99-915-8238	62
8415-99-915-8239	63
8415-99-915-8240	64

Additional Information:

Section AT1-6 DMC CG
Combat Clothing

**HAT, COMBAT, TROPICAL,
MTP**



NSN:	8415-99-667-4307	DMC:	CG
Specification:	DC/MS/3995-2 @ D01896	D of Q:	Each
		PPQ:	001

Description: Hat, Combat, Tropical (Bush Style Sun Hat), MTP. Hat has soft crown, full brim, adjustable detachable chin strap and detachable neck flap.

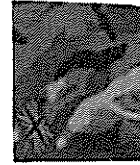
Size Range: 17

<u>NSN</u>	<u>SIZE (cm)</u>
8415-99-667-4307	48
8415-99-667-4308	49
8415-99-667-4309	50
8415-99-667-4310	51
8415-99-667-4311	52
8415-99-667-4312	53
8415-99-667-4313	54
8415-99-667-4314	55
8415-99-667-4315	56
8415-99-667-4316	57
8415-99-667-4317	58
8415-99-667-4318	59
8415-99-667-4319	60
8415-99-667-4320	61
8415-99-667-4321	62
8415-99-667-4322	63
8415-99-667-4323	64

Additional Information:

Section AT1-6 DMC CG
Combat Clothing

**BLANKING PLATE,
MTP**



NSN:	8405-99-991-2142	DMC:	CG
Specification:	UK/SC/6752	D of Q:	Each
		PPQ:	001

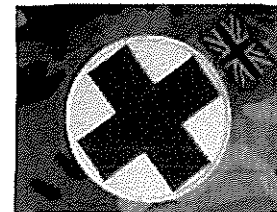
Description: Blanking Plate, MTP. Used to cover touch and close pile element patch on bellows pocket when not in use. With and without Union Flag.

Size Range: Single, 2 styles

<u>NSN</u>	<u>DESCRIPTION</u>	<u>PATTERN No.</u>
8405-99-991-2142	With Union Flag	D02166
8405-99-991-2143	Without Union Flag	D02167

Additional Information: Used on Combat Jacket, UBACS and Smock.

**BLANKING PLATE,
MTP with Red Cross badge**



NSN:	8405-99-154-9521	DMC:	CG
Specification:	UK/SC/6752 @ D02701	D of Q:	Each
		PPQ:	001

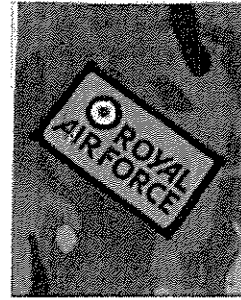
Description: Blanking Plate, MTP with Red Cross Badge and Union Flag, used to identify medical staff.

Size Range: Single

Additional Information: Used on Combat Jacket, UBACS and Smock.

**Section AT1-6 DMC CG
Combat Clothing**

**BLANKING PLATE,
MTP with RAF logo badge**



NSN:	8415-99-302-3515	DMC:	CG
Specification:	UK/SC/6752 @ D02605	D of Q:	Each
		PPQ:	001

Description: Blanking Plate, MTP with RAF Logo Badge. Used to Identify RAF personnel when wearing MTP combat suits.

Size Range: Single

Additional Information: Used on Combat Jacket, UBACS and Smock.

**BLANKING PLATE,
Blue Camouflage**

NSN:	8405-99- 858-3186	DMC:	CG
Specification:	UK/SC/6752 D02166TG TYPE A	D of Q:	Each
		PPQ:	001

Description: Blanking Plate, Cloth, 2 x twill, Polyester & Cotton, Blue Camouflage, tape fastener, hook element. With and without Union Flag.

Size Range: Single, 2 styles

<u>NSN</u>	<u>DESCRIPTION</u>	<u>PATTERN No.</u>
8405-99-858-3186	With Union Flag	D02166TG TYPEA
8405-99-858-3187	Without Union Flag	D02167TG TYPEB

Additional Information: Used on Jacket, UBACS, UBACS-EP, Smock Various, To cover the touch & close pile element patch (when not in use) on the bellows pockets.

Section AT1-6 DMC CG
Combat Clothing

NON MTP ITEMS - PCS

**SHIRT, "T" COMBAT,
Anti-Static, Light Olive**



NSN:	8415-99-813-3254	DMC:	CG
Specification:	DC/MS/6578 @ D01733	D of Q:	Each
		PPQ:	001

Description: T Shirt Combat, Light Olive, Anti-static. Short sleeve and round neck. Lightweight with sweat wicking properties.

Size Range: 6	
<u>NSN</u>	<u>SIZE</u>
8415-99-813-3254	Small
8415-99-813-3255	Medium
8415-99-813-3256	Large
8415-99-813-3257	X Large
8415-99-813-3258	XX Large
8415-99-813-3259	Outsize

Additional Information: Part of the Personal Clothing System (PCS)

**SHIRT, "T" COMBAT,
Anti-Static, Black**

NSN:	8415-99-460-1932	DMC:	CG
Specification:	DC/MS/6578 @ D01733 TG	D of Q:	Each
		PPQ:	001

Description: T Shirt Combat, Black, Anti-static. Short sleeve and round neck. Lightweight with sweat wicking properties.

Size Range: 6	
<u>NSN</u>	<u>SIZE</u>
8415-99-460-1932	Small
8415-99-460-1933	Medium
8415-99-460-1934	Large
8415-99-460-1935	X Large
8415-99-460-1936	XX Large
8415-99-460-1937	Outsize

Additional Information: Used predominantly in temperate and hot climatic conditions. Same as Light olive picture below but in black.

Section AT1-6 DMC CG
Combat Clothing

**UNDERSHORTS,
Anti-Microbial, Black**



NSN: 8420-99-668-3844	DMC: CG
Specification: DC/MS/6579 @ D01735	D of Q: Each
	PPQ: 001

Description: Undershorts, anti-microbial, Black, Boxer style. High length. Inside leg gusset. Elasticated waist.

Size Range: 6

<u>NSN</u>	<u>SIZE</u>
8420-99-668-3844	Small
8420-99-668-3845	Medium
8420-99-668-3846	Large
8420-99-668-3847	X Large
8420-99-668-3848	XX Large
8420-99-668-3849	Outsize

Additional Information: For use in conditions where adequate laundry may not be available. Part of Personal Clothing System (PCS).

**DRAWERS, MEN'S,
Pelvic Protection (Tier 1), Anti-microbial,
Black**



NSN: 8420-99-688-2782	DMC: CG
Specification: DC/MS/6782-1 @ D02276	D of Q: Each
	PPQ: 001

Description: Drawers, Men's. Pelvic Protection. (Tier 1) Anti-microbial. Black Boxer style. Above knee length. White elasticated waistband. Double layer protective panels. Front access to allow urination.

Size Range: 6

<u>NSN</u>	<u>SIZE (cm)</u>
8420-99-688-2782	Small (160/70)
8420-99-688-2783	Medium (170-80)
8420-99-688-2784	Large (180/90)
8420-99-688-2785	X Large (190/100)
8420-99-688-2786	XX Large (200/110)
8420-99-688-2787	Outsize

Additional Information: For use on Ops where extra protection is required. Part of Personal Clothing System (PCS).

Section AT1-6 DMC CG
Combat Clothing

**DRAWERS, WOMEN'S,
Pelvic Protection (Tier 1), Anti-microbial,
Black**



NSN:	8425-99-464-2423	DMC:	CG
Specification:	DC/MS/6782-2 @ D02277	D of Q:	Each
		PPQ:	001

Description: Drawers, Women's. Pelvic Protection. Tier 1, Black, Anti-microbial. Boxer style. Above knee length. White elasticated waistband. Double layer protective panels. Front access to allow use of urination device.

Size Range: 6

<u>NSN</u>	<u>SIZE (cm)</u>
8425-99-464-2423	X Small (160/60)
8425-99-464-2424	Small (170/70)
8425-99-464-2425	Medium (170/80)
8425-99-464-2426	Large (180/90)
8425-99-464-2427	X Large (190/100)
8425-99-464-2428	Outsize

Additional Information: For use on Ops where extra protection is required. Part of Personal Clothing System (PCS).

**DRAWERS, THERMAL UNDERWEAR,
Light Olive**



NSN:	8415-99-152-9104	DMC:	CG
Specification:	DC/MS/6582 @ D01739	D of Q:	Each
		PPQ:	001

Description: Drawers, Thermal Underwear, Light Olive. Long John design, ankle length with elasticated waist and ankle cuffs.

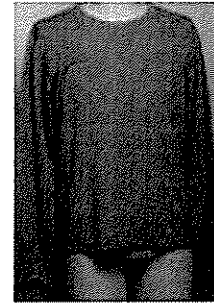
Size Range: 6

<u>NSN</u>	<u>SIZE (cm)</u>
8415-99-152-9104	Small (160/70)
8415-99-152-9105	Medium (170/80)
8415-99-152-9106	Large (180/90)
8415-99-152-9107	X Large (190/100)
8415-99-152-9108	XX Large (200/110)
8415-99-152-9109	Outsize

Additional Information: For use in cold climates with Vest 8415-99-152-9110 to 9115. Part of Personal Clothing System (PCS).

Section AT1-6 DMC CG
Combat Clothing

VEST, Thermal, Light Olive



NSN:	8415-99-152-9110	DMC:	CG
Specification:	DC/MS/6580 @ D01736	D of Q:	Each
		PPQ:	001

Description: Vest, Thermal, Light Olive., Round neck. Long sleeves with ribbed cuffs, Back dipped hem.

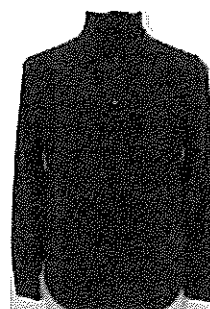
Size Range: 6

<u>NSN</u>	<u>SIZE (cm)</u>
8415-99-152-9110	Small (160/80)
8415-99-152-9111	Medium (170/90)
8415-99-152-9112	Large (180/100)
8415-99-152-9113	X Large (190/110)
8415-99-152-9114	XX Large (200/120)
8415-99-152-9115	Outsize

Additional Information: For use in cold climates with Vest 8415-99-152-9104 to 9109. Part of Personal Clothing System (PCS).

**Section AT1-6 DMC CG
Combat Clothing**

**UNDERSHIRT, COMBAT,
Thermal, Light Olive**



SN:	8415-99-813-3260	DMC:	CG
Specification:	DC/MS/6581 @ D01737	D of Q:	Each
		PPQ:	001

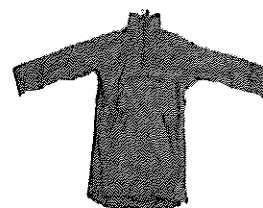
Description: Undershirt, Combat, Thermal. Light Olive. Full length sleeves with thumb opening in cuff, stand collar with short slide fastener at front. Long dipped hem at back.

Size Range: 6

<u>NSN</u>	<u>SIZE (cm)</u>
8415-99-813-3260	Small (160/80)
8415-99-813-3261	Medium (170/90)
8415-99-813-3262	Large (180/100)
8415-99-813-3263	X Large (190/110)
8415-99-813-3264	XX Large (200/120)
8415-99-813-3265	Outsize

Additional Information: Part of the Personal Clothing System. Used predominantly in extreme cold weather conditions. Photo is this item, but in black.

**SMOCK, LIGHTWEIGHT, THERMAL,
Light Olive**



NSN:	8415-99-813-3289	DMC:	CG
Specification:	DC/MS/6583 @ D01740	D of Q:	Each
		PPQ:	001

Description: Smock Lightweight Thermal, Light Olive., Water resistant. Fleece lined. Stand collar with integral hood. Short front slide fastener. Front stowage pocket with reversible slide fastener. Twin hip pockets with fleece lining and slide fastener closures. Side and pit vents.

Size Range: 6

<u>NSN</u>	<u>SIZE (cm)</u>
8415-99-813-3289	Small (160/80)
8415-99-813-3290	Medium (170/90)
8415-99-813-3291	Large (180/100)
8415-99-813-3292	X Large (190/110)
8415-99-813-3293	XX Large (200/120)
8415-99-813-3294	Outsize

Additional Information: Part of the Personal Clothing System (PCS). For use as mid-layer thermal protection in cold climatic conditions and as outer layer protection in temperate conditions.

**Section AT1-6 DMC CG
Combat Clothing**

**JACKET,
THERMAL, Light Olive,
with integrated stuff sack.**



NSN:	8415-99-837-6198	DMC:	CG
Specification:	DC/MS/6589 @ D01747	D of Q:	Each
		PPQ:	001

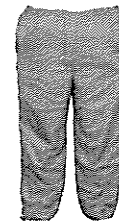
Description: Jacket. Thermal, Light Olive. Lightweight outer with fleece lining. Front slide fastener opening. Rank strap. Chest pocket with slide fastener forming stuff sack. Two slanted welt pockets with slide fasteners. Elasticated cuffs. Stand collar with stowable hood. Draw cord in hem, collar and hood

Size Range: 6

<u>NSN</u>	<u>SIZE (cm)</u>
8415-99-837-6198	Small (160/80)
8415-99-837-6199	Medium (170/90)
8415-99-837-6200	Large (180/100)
8415-99-837-6201	X Large (190/110)
8415-99-837-6202	XX Large (200/120)
8415-99-837-6203	Outsize

Additional Information: To provide a warm layer of intermediate clothing To be worn with trousers 8415-99-837-6204. Part of the Personal Clothing System (PCS)

**TROUSERS, Thermal,
Light Olive with integrated stuff sack**



NSN:	8415-99-837-6204	DMC:	CG
Specification:	DC/MS/6590 @ D01748	D of Q:	Each
		PPQ:	001

Description: Trousers. Thermal. Insulated, Light Olive with integrated stuff sack. 2 fabric layers with micro-fibre filler. Elasticated waist band. Side access pockets. Hip pocket forming stuff sack. Side openings with full length slide fastener.

Size Range: 6

<u>NSN</u>	<u>SIZE (cm)</u>
8415-99-837-6204	Small (70/70)
8415-99-837-6205	Medium (80/75)
8415-99-837-6206	Large (90/80)
8415-99-837-6207	X Large (100/85)
8415-99-837-6208	XX Large (110/90)
8415-99-837-6209	Outsize

Additional Information: To provide a warm layer of intermediate clothing. To be worn with jacket 8415-99-837-6198. Part of the Personal Clothing System (PCS).

Section AT1-6 DMC CG
 Combat Clothing

NON - PERSONAL CLOTHING SYSTEM (PCS) ITEMS IN MTP

**COVER, COMBAT HELMET, MK6,
 MTP**



NSN:	8415-99-776-2471	DMC:	CG
Specification:	DC/MS/4813-1 @ D00583-3	D of Q:	Each
		PPQ:	001

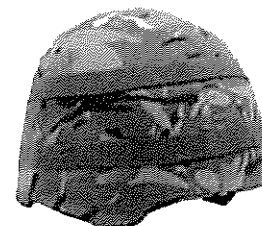
Description: Cover, Combat Helmet, General Service, Mk6. With elastic webbing for attachment of foliage etc

Size Range: 4

<u>NSN</u>	<u>SIZE</u>
8415-99-776-2471	Regular
8415-99-926-7884	Large
8415-99-776-2472	Outsize
8415-99-926-7883	Small

Additional Information: Used with Helmet Combat Mk6. (8470-99-132-6005 to 7 and 8470-99-130-6519)

**COVER, COMBAT HELMET GS, MK7,
 MTP**



NSN:	8415-99-152-0778	DMC:	CG
Specification:	DC/MS/6756 @ D02193	D of Q:	Each
		PPQ:	001

Description: Cover, Combat Helmet Mk7, MTP.

Size Range: 3

<u>NSN</u>	<u>SIZE</u>
8415-99-152-0778	Small/Medium
8415-99-152-0779	Large
8415-99-152-0780	Outsize

Additional Information: Used with Helmet Combat Mk7.8470-99-213-3598 to 3601

Section AT1-6 DMC CG
Combat Clothing

**COVER, COMBAT HELMET,
Blue Camouflage**

NSN: 8415-99-615-8135	DMC: CG
Specification: DC/MS/6756 D02193TG	D of Q: Each
	PPQ: 001

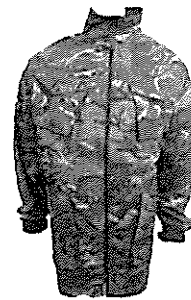
Description: Cover, Combat Helmet, Blue Camouflage,

Size Range: 3	
<u>NSN</u>	<u>SIZE</u>
8415-99-615-8135	Small/Medium
8415-99-615-8136	Large
8415-99-615-8137	Outsize

Additional Information: Used with Helmet Combat Mk7.8470-99-213-3598 to 3601

**Section AT1-6 DMC CG
Combat Clothing**

**SMOCK, PARACHUTIST'S,
MTP**



NSN:	8415-99-418-3307	DMC:	CG
Specification:	DC/MS/4440 @ 21119B TG	D of Q:	Each
		PPQ:	001

Description: Smock Parachutist's. MTP Water resistant. Front slide fastener closure. Stand collar. Shoulder straps. Bellows pockets at chest, hip and right sleeve. Patch pocket left sleeve. Knitted inner cuffs. Half lining. Skirt pocket inside lower back. Crotch strap. Draw cord at waist and hem

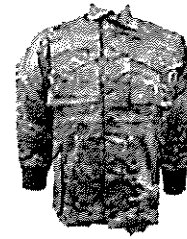
Size Range: 14

<u>NSN</u>	<u>HEIGHT (cm)</u>	<u>CHEST (cm)</u>
8415-99-418-3307	160	88
8415-99-418-3308	160	96
8415-99-418-3309	160	104
8415-99-418-3310	170	88
8415-99-418-3311	170	96
8415-99-418-3312	170	104
8415-99-418-3313	170	112
8415-99-418-3314	180	96
8415-99-418-3315	180	104
8415-99-418-3316	180	112
8415-99-418-3317	190	104
8415-99-418-3318	190	112
8415-99-418-3319	190	120
8415-99-418-3320	Outsize	

Additional Information:

**Section AT1-6 DMC CG
Combat Clothing**

**SMOCK, SNIPER'S,
MTP**



NSN:	8415-99-418-3293	DMC:	CG
Specification:	DC/MS/4939 @ 23072 TG	D of Q:	Each
		PPQ:	001

Description: Smock, Sniper's, MTP. Front slide fastener and snap fastening, storm guard. Stand collar. Chest and hip bellows pockets. Skirt pocket inside lower back. Crotch strap. Padded lower sleeve with knitted wool cuffs. Half lined. Draw cord at waist and hem. Upper arm spring clip. Webbing for camouflage dressing on arms and back

Size Range: 14

<u>NSN</u>	<u>HEIGHT (cm)</u>	<u>CHEST (cm)</u>
8415-99-418-3293	160	88
8415-99-418-3294	160	96
8415-99-418-3295	160	104
8415-99-418-3296	170	88
8415-99-418-3297	170	96
8415-99-418-3298	170	104
8415-99-418-3299	170	112
8415-99-418-3300	180	96
8415-99-418-3301	180	104
8415-99-418-3302	180	112
8415-99-418-3303	190	104
8415-99-418-3304	190	112
8415-99-418-3305	190	120
8415-99-418-3306		Outsize

Additional Information:

**Section AT1-6 DMC CG
Combat Clothing**

**SHIRT, BARRACK,
MTP**



NSN:	8405-99-841-4780	DMC:	CG
Specification:	DC/MS/6915 @ D02558	D of Q:	Each
		PPQ:	001

Description: Shirt, Barrack, MTP. Front button closure with rank strap. Collar. Bellows, Chest pockets with internal pen pocket and button closure. Union flag attached to top of left sleeve. Adjustable cuffs with buttons. Designed primarily to satisfy an in-barracks requirement but may have a limited capability on operations when sustained wear of combat body armour (CBA) is not required. Its primary use should allow a smarter uniform option and enhance the Army's professional image. The material does not have insect repellence.

Size Range: 20

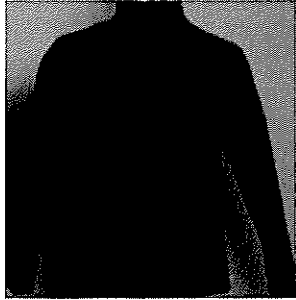
<u>NSN</u>	<u>HEIGHT (cm)</u>	<u>CHEST (cm)</u>
8405-99-841-4780	160	88
8405-99-841-4781	160	96
8405-99-841-4782	160	104
8405-99-841-4783	170	88
8405-99-841-4784	170	96
8405-99-841-4785	170	104
8405-99-841-4786	170	112
8405-99-841-4787	180	96
8405-99-841-4788	180	104
8405-99-841-4789	180	112
8405-99-841-4790	180	120
8405-99-841-4791	190	96
8405-99-841-4792	190	104
8405-99-841-4793	190	112
8405-99-841-4794	190	120
8405-99-841-4795	200	104
8405-99-841-4796	200	112
8405-99-841-4797	200	120
8405-99-841-4798	200	128
8405-99-841-4799		Outsize


Additional Information: Designed primarily for in-barracks wear to allow a smarter uniform option and enhance the Army's professional image. It may have a limited capability on operations when sustained wear of combat body armour (CBA) is not required. The material DOES NOT have insect repellent treatment.

Section AT1-6 DMC CG
Combat Clothing

SPECIAL FORCES CLOTHING

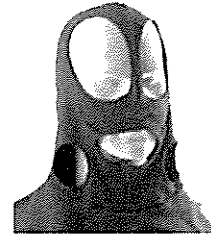
These items are for Special Forces (SF) only, they have Nil stock and are "Buy As Required" any demands from unauthorised units will be cancelled.

VEST, ASSAULT SUIT, FR			
Dark Navy or Black			
NSN:	8415-99-811-2668		DMC: CG
Specification:	DC/MS/5986 @ D00512A		D of Q: Each
		PPQ: 001	
Description: Vest Assault Suit. FR Dark Navy or Black. Long sleeves, polo neck collar.			
Size Range: 4			
	<u>NSN</u>	<u>SIZE</u>	
	8415-99-811-2668	Small	
	8415-99-811-2669	Medium	
	8415-99-811-2670	Large	
	8415-99-811-2671	X Large	
Additional Information: Part of the Assault Suit ensemble. For use by SF only.			

DRAWERS,			
Assault Suit, FR, Dark Navy or Black			
NSN:	8415-99-811-2672		DMC: CG
Specification:	DC/MS/5987 @ D00513A		D of Q: Each
		PPQ: 001	
Description: Drawers, Assault Suit. FR, Dark Navy blue/black. Attached ankle cuffs, elasticated waist. Fly opening.			
Size Range: 4			
	<u>NSN</u>	<u>SIZE</u>	
	8415-99-811-2672	Small	
	8415-99-811-2673	Medium	
	8415-99-811-2674	Large	
	8415-99-811-2675	X Large	
Additional Information: Part of the Assault Suit ensemble. For use by SF only.			

Section AT1-6 DMC CG
Combat Clothing

**BALACLAVA, ASSAULT SUIT, FR,
Dark Navy or Black**



NSN: 8415-99-811-2676	DMC: CG
Specification: DC/MS/5988 @ D00514	D of Q: Each
	PPQ: 001

Description: Balaclava Assault Suit. FR. One size only. Apertures for eyes and breathing mask and filters.

Size Range: Single

Additional Information: Part of the Assault Suit ensemble. For use by SF only.

**GLOVES, ASSAULT SUIT, FR
Dark Navy or Black**



NSN: 8415-99-811-2677	DMC: CG
Specification: DC/MS/5989 @ D00515	D of Q: Pair
	PPQ: 001

Description: Gloves Assault Suit. FR, Dark Navy/Black. Long length. Elasticated wrists. Leather palms.

Size Range: 3

<u>NSN</u>	<u>SIZE</u>
8415-99-811-2677	Small
8415-99-811-2678	Medium
8415-99-811-2679	Large

Additional Information: Part of the Assault Suit ensemble. For use by SF only.

Section AT1-6 DMC CG
Combat Clothing

**COVERALLS,
Assault Suit, FR, Dark Navy or Black**



NSN:	8415-99-811-2664	DMC:	CG
Specification:	DC/MS/5982 @ D00434A	D of Q:	Each
		PPQ:	001

Description: Coveralls Assault Suit. FR. Dark Navy/Black. Front opening with slide fastener. Attached hood. Thigh Bellows pockets, right lower leg pocket, sleeve patch pocket, elbow and knee patches. Knitted cuffs. Elasticated leg hems. Elasticated back waist.

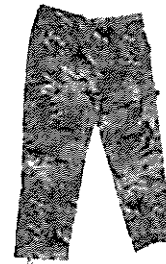
Size Range: 5

<u>NSN</u>	<u>SIZE (cm)</u>
8415-99-811-2664	Small (170/108)
8415-99-811-2665	Medium (180/108)
8415-99-811-2666	Large (180/116)
8415-99-811-2667	X Large (190/124)
8415-99-517-5411	XX Large (200/132)

Additional Information: Part of the Assault Suit ensemble. For use by SF only.

**Section AT1-6 DMC CG
Combat Clothing**

**TROUSERS, COMBAT,
Windproof, MTP**



NSN:	8415-99-667-4294	DMC:	CG
Specification:	DC/MS/4444 @ D01895	D of Q:	Each
		PPQ:	001

Description: Trousers, Combat, MTP, Slanted side pockets. Thigh bellows patch pockets. Belt loops. Waist adjustment straps Back self-lined from waist to just below thigh. Front self-lined from hip to top of ankle opening. Adjustable draw cord in bottom hem.

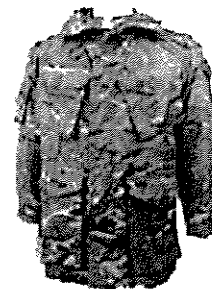
Size Range: 13

<u>NSN</u>	<u>INSIDE LEG (cm)</u>	<u>WAIST (cm)</u>	<u>SEAT (cm)</u>
8415-99-667-4294	70	80	96
8415-99-667-4295	70	88	104
8415-99-667-4296	70	96	112
8415-99-667-4297	76	80	96
8415-99-667-4298	76	88	104
8415-99-667-4299	76	96	112
8415-99-667-4300	82	80	96
8415-99-667-4301	82	88	104
8415-99-667-4302	82	96	112
8415-99-667-4303	90	88	104
8415-99-667-4304	90	96	112
8415-99-667-4305	90	104	120
8415-99-667-4306		Outsize	

Additional Information: To be worn with Smock, Combat, Windproof. 8415-99-396-5988 to 6004 For use by SF only.

**Section AT1-6 DMC CG
Combat Clothing**

**SMOCK, COMBAT,
Windproof, MTP**



NSN:	8415-99-418-3321	DMC:	CG
Specification:	DC/MS/4431 @ 21049A TG	D of Q:	Each
		PPQ:	001

Description: Smock, Combat, Windproof, MTP. Slide fastener with storm guard. Attached self lined hood. Bellows pockets on sleeves, hip and chest pockets. Inside chest pocket. Inside back poachers pocket. Draw cord to hood, hem and waist


Size Range: 14


<u>NSN</u>	<u>HEIGHT (cm)</u>	<u>CHEST (cm)</u>
8415-99-418-3321	160	88
8415-99-418-3322	160	96
8415-99-418-3323	160	104
8415-99-418-3324	170	88
8415-99-418-3325	170	96
8415-99-418-3326	170	104
8415-99-418-3327	170	112
8415-99-418-3328	180	96
8415-99-418-3329	180	104
8415-99-418-3330	180	112
8415-99-418-3331	190	104
8415-99-418-3332	190	112
8415-99-418-3333	190	120
8415-99-418-3334		Outsize

Additional Information: To be worn with Trousers, windproof 8415-99-667-4294 to 4306. For use by SF only.

Section AT1-6 DMC CG
Combat Clothing

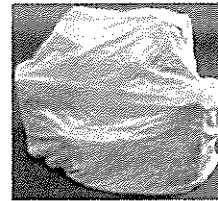
SNOW CONDITION ITEMS

<p>PARKA, CAMOUFLAGE, White</p> <p>Put with rucksack covers and trousers</p>												
NSN:	8415-99-136-2680		DMC:	CG								
Specification:	DC/MS/3912 @ 20492		D of Q:	Each								
			PPQ:	001								
<p>Description: Parka, Camouflage, White. Front button fastening. Attached hood. Draw cord at hood, waist and hem. To be worn as an over garment. Lightweight for easy stowage.</p>												
<p>Size Range: 3</p> <table style="width: 100%; border-collapse: collapse;"> <thead> <tr> <th style="text-align: left; width: 60%;"><u>NSN</u></th> <th style="text-align: left;"><u>HEIGHT (cm)</u></th> </tr> </thead> <tbody> <tr> <td>8415-99-136-2680</td> <td>160 -170</td> </tr> <tr> <td>8415-99-136-2682</td> <td>170 -180</td> </tr> <tr> <td>8415-99-136-2684</td> <td>180 -190</td> </tr> </tbody> </table>					<u>NSN</u>	<u>HEIGHT (cm)</u>	8415-99-136-2680	160 -170	8415-99-136-2682	170 -180	8415-99-136-2684	180 -190
<u>NSN</u>	<u>HEIGHT (cm)</u>											
8415-99-136-2680	160 -170											
8415-99-136-2682	170 -180											
8415-99-136-2684	180 -190											
<p>Additional Information: For use in snow conditions. Forms a suit with Trousers Camouflage white 8415-99-136-2686, 2688, 2690 and 2691</p>												

<p>TROUSERS, CAMOUFLAGE, White</p>														
NSN:	8415-99-136-2686		DMC:	CG										
Specification:	DC/MS/3913 @ 20493A		D of Q:	Each										
			PPQ:	001										
<p>Description: Trousers, Camouflage, White. Draw cord waistband and hems. Waistband loops. Centre front and side access openings. Over trousers. Lightweight for easy stowage and to be rolled up for stowage when not in use.</p>														
<p>Size Range: 4</p> <table style="width: 100%; border-collapse: collapse;"> <thead> <tr> <th style="text-align: left; width: 60%;"><u>NSN</u></th> <th style="text-align: left;"><u>HEIGHT (cm)</u></th> </tr> </thead> <tbody> <tr> <td>8415-99-136-2686</td> <td>160 -170</td> </tr> <tr> <td>8415-99-136-2688</td> <td>170 -180</td> </tr> <tr> <td>8415-99-136-2690</td> <td>180 -190</td> </tr> <tr> <td>8415-99-136-2691</td> <td>Outsize</td> </tr> </tbody> </table>					<u>NSN</u>	<u>HEIGHT (cm)</u>	8415-99-136-2686	160 -170	8415-99-136-2688	170 -180	8415-99-136-2690	180 -190	8415-99-136-2691	Outsize
<u>NSN</u>	<u>HEIGHT (cm)</u>													
8415-99-136-2686	160 -170													
8415-99-136-2688	170 -180													
8415-99-136-2690	180 -190													
8415-99-136-2691	Outsize													
<p>Additional Information: For use in snow conditions. Forms a suit with Parka 8415-99-136-2680, 2682 and 2684</p>														

**Section AT1-6 DMC CG
Combat Clothing**

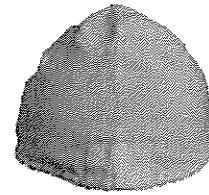
**COVER, RUCKSACK,
White**



NSN:	8465-99-977-9504	DMC:	CG
Specification:	DC/MS/4732 @ 1112A	D of Q:	Each
		PPQ:	001

Description: Cover Rucksack. White. 160cm Long x 1440cm wide.
Size Range: Single
Additional Information: For use in snow conditions

**COVER, COMBAT HELMET, MK6,
White**



NSN:	8415-99-471-4985	DMC:	CG
Specification:	DC/MS/4813-2 @ D00584-1	D of Q:	Each
		PPQ:	001

Description: Cover, Combat Helmet, General Service, Mk6. White
Size Range: 4

<u>NSN</u>	<u>SIZE</u>
8415-99-471-4985	Small
8415-99-471-4986	Medium
8415-99-471-4987	Large
8415-99-471-4988	Outsize

Additional Information: Used with Helmet Combat Mk6.(8470-99-132-6005 to 7 and 8470-99-130-6519)
For use in snow conditions

Section AT1-6 DMC CG
Combat Clothing

**COVER, COMBAT HELMET, GS, MK7,
White**

NSN: 8415-99-814-7165	DMC: CG
Specification: DC/MS/6756 @ D02193 TG	D of Q: Each
	PPQ: 001

Description: Cover, Combat Helmet Mk7, White.

Size Range: 3	
<u>NSN</u>	<u>SIZE</u>
8415-99-814-7165	Small/Medium
8415-99-814-7166	Large
8415-99-814-7167	Outsize

Additional Information: Used with Helmet Combat Mk7.8470-99-213-3598 to 3601. For use in snow conditions.

ADDITIONAL HELMET COVERS

**COVER, COMBAT HELMET, MK6,
 High Visibility**



NSN:	8415-99-856-3970	DMC:	CG
Specification:	DC/MS/4813-3 @ D00562A	D of Q:	Each
		PPQ:	001

Description: Cover, Combat Helmet Mk6. High Visibility Yellow, with elastic loops to hold light sticks.

Size Range: 2

<u>NSN</u>	<u>SIZE</u>
8415-99-856-3970	Regular
8415-99-856-3971	Outsize

Additional Information: Used with Helmet Combat Mk6. (8470-99-132-6005 to 7 and 8470-99-130-6519)
 For wear on ranges

**COVER, COMBAT HELMET GS, MK7,
 High Visibility Yellow**

NSN:	8415-99-976-1961	DMC:	CG
Specification:	DC/MS/6768 @ D02254	D of Q:	Each
		PPQ:	001

Description: Cover, Combat Helmet Mk7, High Visibility Yellow, with elastic loops to hold light sticks.

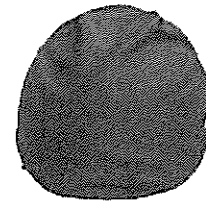
Size Range: 3

<u>NSN</u>	<u>SIZE</u>
8415-99-976-1961	Small/Medium
8415-99-976-1962	Large
8415-99-976-1963	Outsize

Additional Information: Used with Helmet Combat Mk7.8470-99-213-3598 to 3601. For wear on ranges.

Section AT1-6 DMC CG
Combat Clothing

**COVER, COMBAT HELMET, MK6,
UN Blue**



NSN:	8415-99-471-4989	DMC:	CG
Specification:	DC/MS/4813-2 @ D00584-2	D of Q:	Each
		PPQ:	001

Description: Cover, Combat Helmet, General Service, Mk6. UN Blue	
Size Range: 4	
<u>NSN</u>	<u>SIZE</u>
8415-99-471-4989	Small
8415-99-471-4990	Medium
8415-99-471-4991	Large
8415-99-471-4992	Outsize
Additional Information: Used with Helmet Combat Mk6. (8470-99-132-6005 to 7 and 8470-99-130-6519) For wear when on UN related duties.	

**COVER, COMBAT HELMET, GS, MK7,
UN Blue**

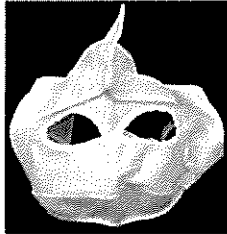
NSN:	8415-99-814-7171	DMC:	CG
Specification:	DC/MS/6756 @ D02193 TG	D of Q:	Each
		PPQ:	001

Description: Cover, Combat Helmet Mk7, UN Blue. Cloth, twill, polyester and cotton	
Size Range: 3	
<u>NSN</u>	<u>SIZE</u>
8415-99-814-7171	Small/Medium
8415-99-814-7172	Large
8415-99-814-7173	Outsize
Additional Information: Used with Helmet Combat Mk7.8470-99-213-3598 to 3601. For wear when on UN related duties	

Section AT1-6 DMC CG
 Combat Clothing

PROTECTIVE ITEMS

**FACE MASK,
 Extreme Cold Weather, White, FR**



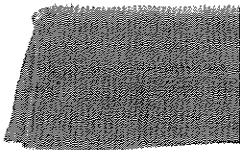
NSN:	8415-99-978-2182	DMC:	CG
Specification:	DC/MS/5585 @ 23144A	D of Q:	Each
		PPQ:	001

Description: Face Mask. Extreme Cold Weather. White. FR. With detachable oral/nasal cover. Supplied with 2 spare covers. Universal size.

Size Range: Single

Additional Information: For use in conditions of severe cold and wind chill.

**HEADNET,
 Camouflage, Olive**



NSN:	8415-99-127-8852	DMC:	CG
Specification:	DC/MS/3436 @ 8174A/B	D of Q:	Each
		PPQ:	010

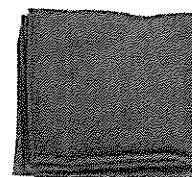
Description: Head net, Camouflage, Olive. Open mesh. 120cm x120cm.

Size Range: Single

Additional Information: Used to camouflage with foliage etc

**Section AT1-6 DMC CG
Combat Clothing**

**HEADOVER,
Light Olive**



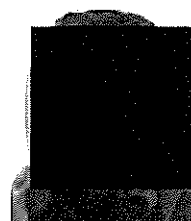
NSN: 8405-99-463-8727	DMC: CG
Specification: DC/MS/6739 @ D02148	D of Q: Each
	PPQ: 001

Description: Head over, light olive, 55cm overall length, 25cm overall wide, tubular with inherent high wicking and quick drying properties. Wearable in various configurations.

Size Range: Single

Additional Information: Predominantly for use in warm/hot weather conditions.

**INSECT NET,
Head, Olive**



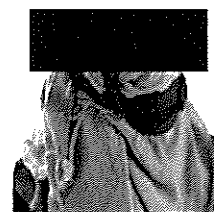
NSN: 8415-99-519-8268	DMC: CG
Specification: UK/SC/6080 @ D00539A	D of Q: Each
	PPQ: 001

Description: Head net, Insect Protective, Olive. Tube shaped with circular crown. Elasticated Adjustable hem, with toggle fastener. Worn over Combat Helmet.

Size Range: Single

Additional Information: To protect face/neck from insects

**SCARF, SHEMAGH,
Light Beige**



NSN: 8440-99-876-9586	DMC: CG
Specification: DC/CPS/6118	D of Q: Each
	PPQ: 001

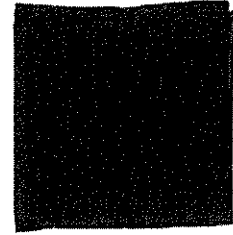
Description: Scarf, Shemagh. 117cm x 117cm. Cotton. Traditional desert style head dress for protection of eyes, nose, mouth & neck from sand etc.

Size Range: Single

Additional Information:

**Section AT1-6 DMC CG
Combat Clothing**

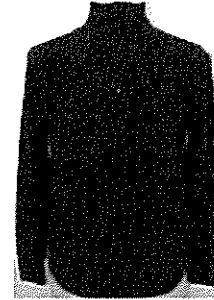
**RAG, SWEAT, TROPICAL,
Tropical Green**



NSN:	8420-99-975-7529	DMC:	CG
Specification:	DC/MS/5343 @ 13424A	D of Q:	Each
		PPQ:	001

Description: Rag Sweat. Tropical. Green. Cotton. 105cm long x 40cm wide.
Size Range: Single
Additional Information: For use in tropical / jungle areas

**UNDERSHIRT, COMBAT,
Thermal, Black**



NSN:	8415-99-813-3266	DMC:	CG
Specification:	DC/MS/6581 @ D01737 TG	D of Q:	Each
		PPQ:	001

Description: Undershirt, Combat, Thermal. Black. Full length sleeves with thumb opening in cuff, stand collar with short slide fastener at front. Long dipped hem at back.

Size Range: 6

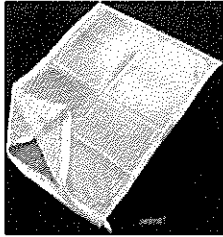
<u>NSN</u>	<u>SIZE (cm)</u>
8415-99-813-3266	Small (160/80)
8415-99-813-3267	Medium (170/90)
8415-99-813-3268	Large (180/100)
8415-99-813-3269	X Large (190/110)
8415-99-813-3270	XX Large (200/120)
8415-99-813-3271	Outsize

Additional Information: Used predominantly in extreme cold weather conditions by SF and MDP.

Section AT1-6 DMC CG
 Combat Clothing

HYGIENE ITEMS

**NET, WASHING,
 for Soiled Linen**



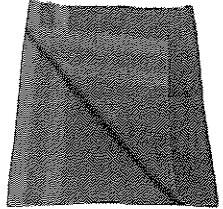
NSN: 8465-99-132-1441	DMC: CG
Specification: DC/MS/5958 @ 24167A	D of Q: Each
	PPQ: 001

Description: Net Washing. 60cm wide x 90cm deep with drawstring closure. For holding soiled clothing during laundering.

Size Range: Single

Additional Information:

**TOWEL, BATH,
 Olive**



NSN: 7210-99-667-3479	DMC: CG
Specification: DC/PS/6643 @ D01864	D of Q: Each
	PPQ: 001

Description: Olive Towel, Bath. Micro-Fibre, highly absorbent, quick drying, anti-microbial and anti-odour. Supplied with ventilated stuff sack/carry bag

Size Range: 2

<u>NSN</u>	<u>DESCRIPTION</u>
7210-99-667-3479	Medium size, 100cm long x 50cm wide
7210-99-667-3480	Large size, 150cm long x 100cm wide

Additional Information:

Section AT1-6 DMC CG
Combat Clothing

HEAD ITEMS

CAP, CAMOUFLAGE PATTERN, Blue Camouflage	
NSN: 8415-99-731-6037	DMC: CG
Specification: DC/MS/3671 D02865TG	D of Q: Each
	PPQ: 001

Description: Cap, Camouflage Pattern, Combat, Blue Camouflage, With semi-stiff peak, short flap to cover back of neck and ears. Ventilation eyelets.

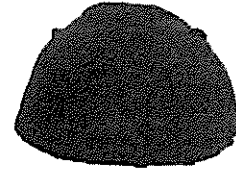
Size Range: 17

<u>NSN</u>	<u>SIZE (cm)</u>
8415-99-731-6037	48
8415-99-731-6038	49
8415-99-731-6039	50
8415-99-731-6040	51
8415-99-731-6041	52
8415-99-731-6042	53
8415-99-731-6043	54
8415-99-731-6044	55
8415-99-731-6045	56
8415-99-731-6046	57
8415-99-731-6047	58
8415-99-731-6048	59
8415-99-731-6049	60
8415-99-731-6050	61
8415-99-731-6051	62
8415-99-731-6052	63
8415-99-731-6053	64

Additional Information:

Section AT1-6 DMC CG
Combat Clothing

**COVER, COMBAT HELMET, MK6,
Navy Blue**



NSN:	8415-99-471-4993	DMC:	CG
Specification:	DC/MS/4813-2 @ D00279	D of Q:	Each
		PPQ:	001

Description: Cover, Combat Helmet, General Service, Mk6. Navy Blue	
Size Range: 4	
<u>NSN</u>	<u>SIZE</u>
8415-99-471-4993	Small
8415-99-471-4994	Medium
8415-99-471-4995	Large
8415-99-471-4996	Outsize
Additional Information: Used with Helmet Combat Mk6. (8470-99-132-6005 to 7 and 8470-99-130-6519) For wear by RN personnel.	

**COVER, COMBAT HELMET, GS, MK7,
Navy Blue**

NSN:	8415-99-814-7168	DMC:	CG
Specification:	DC/MS/6756 @ D02193 TG	D of Q:	Each
		PPQ:	001

Description: Cover, Combat Helmet Mk7, Navy Blue. Cloth, twill, polyester and cotton	
Size Range: 3	
<u>NSN</u>	<u>SIZE</u>
8415-99-814-7168	Small/Medium
8415-99-814-7169	Large
8415-99-814-7170	Outsize
Additional Information: Used with Helmet Combat Mk7.8470-99-213-3598 to 3601. For wear by RN personnel.	

Section AT1-6 DMC CG
 Combat Clothing

ARMoured FIGHTING VEHICLE (AFV) ITEMS

**VEST,
 Armoured Fighting Vehicle, FR, Beige**



NSN:	8415-99-471-4759	DMC:	CG
Specification:	DC/MS/5904 @ D00357ATG	D of Q:	Each
		PPQ:	001

Description: Vest, Armoured Fighting Vehicle, FR, Beige. Long sleeves, polo neck collar.	
Size Range: 4	
<u>NSN</u>	<u>SIZE</u>
8415-99-471-4759	Small
8415-99-471-4760	Medium
8415-99-471-4761	Large
8415-99-471-4762	X Large
Additional Information: Part of Armoured Fighting Vehicle. Flame Resistant ensemble. This range supersedes 8415-99-458-7544 to 7547(Olive range). Photo is this item but in olive.	

**LONG JOHNS,
 AFV Crewman's FR, Olive**

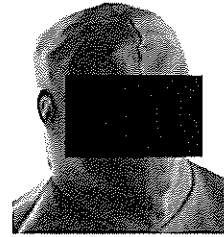


NSN:	8415-99-458-7540	DMC:	CG
Specification:	DC/MS/5903 @ D00356A	D of Q:	Each
		PPQ:	001

Description: Long Johns, AFV Crewman's FR. Olive. Elasticated waist. Ankle Cuffs. Fly opening.	
Size Range: 4	
<u>NSN</u>	<u>SIZE</u>
8415-99-458-7540	Small
8415-99-458-7541	Medium
8415-99-458-7542	Large
8415-99-458-7543	X Large
Additional Information: Part of Armoured Fighting Vehicle ensemble.	

Section AT1-6 DMC CG
Combat Clothing

**BALACLAVA, Flame Resistant,
Armoured Fighting Vehicle, Olive**



NSN:	8415-99-458-7535	DMC:	CG
Specification:	DC/MS/5901 @ D00354	D of Q:	Each
		PPQ:	001

Description: Balaclava, FR, AFV Crewman's, Olive. One size. Full head cover with apertures for face and ears.

Size Range: Single

Additional Information: Part of the Armoured Fighting Vehicle Ensemble. With Coveralls FR (8415-99-212-5330 to 5344 and 8415-99-930-4128 to 4132) Vest and Long Johns.

**GLOVES,
AFV, Crewman's FR, Olive**



NSN:	8415-99-458-7536	DMC:	CG
Specification:	DC/MS/5902 @ D00355	D of Q:	Pair
		PPQ:	001

Description: Gloves, AFV, Crewman's, FR, Olive. Long length. Elastic at wrist.

Size Range: 4

<u>NSN</u>	<u>SIZE</u>
8415-99-458-7536	Small
8415-99-458-7537	Medium
8415-99-458-7538	Large
8415-99-458-7539	X Large

Additional Information: Part of armoured fighting vehicle FR ensemble.

**Section AT1-6 DMC CG
Combat Clothing**

**COVERALLS, COMBAT VEHICLE,
AFV Crewman, FR, Beige**



NSN:	8415-99-212-5330	DMC:	CG
Specification:	DC/MS/5442 @ D00118	D of Q:	Each
		PPQ:	001

Description: Coveralls Combat Vehicle Crewman's. FR, Beige.
Slide fastener front opening, Rear access seat opening, Patch pockets on chest, side, thigh and below knee, Shoulder straps and harness, Leg openings with slide fastener closure and side access opening.

Size Range: 20		
<u>NSN</u>	<u>HEIGHT (cm)</u>	<u>CHEST (cm)</u>
8415-99-212-5330	160	88
8415-99-212-5331	160	96
8415-99-212-5332	160	104
8415-99-212-5333	170	88
8415-99-212-5334	170	96
8415-99-212-5335	170	104
8415-99-212-5336	170	112
8415-99-212-5337	180	96
8415-99-212-5338	180	104
8415-99-212-5339	180	112
8415-99-930-4128	180	120
8415-99-212-5340	190	96
8415-99-212-5341	190	104
8415-99-212-5342	190	112
8415-99-212-5343	190	120
8415-99-930-4129	200	104
8415-99-930-4130	200	112
8415-99-930-4131	200	120
8415-99-930-4132	200	128
8415-99-212-5344		Outsize

Additional Information:

Section AT1-6 DMC CG
Combat Clothing

**COVERALLS, COMBAT VEHICLE,
AFV Crewman, TRAINING, MTP, Not FR**

NSN:	8415-99-226-0794	DMC:	CG
Specification:	DC/MS/5431 @ 28112B TG	D of Q:	Each
		PPQ:	001

Description: Coveralls, Combat Vehicle, Crewman's, TRAINING, (MTP). This item is the same design as the Coveralls, Beige but is **NOT FR**.

Size Range: 20

NSN	HEIGHT (cm)	CHEST (cm)
8415-99-226-0794	160	88
8415-99-226-0795	160	96
8415-99-226-0796	160	104
8415-99-226-0797	170	88
8415-99-226-0798	170	96
8415-99-226-0799	170	104
8415-99-226-0800	170	112
8415-99-226-0801	180	96
8415-99-226-0802	180	104
8415-99-226-0803	180	112
8415-99-226-0804	180	120
8415-99-226-0805	190	96
8415-99-226-0806	190	104
8415-99-226-0807	190	112
8415-99-226-0808	190	120
8415-99-226-0809	200	104
8415-99-226-0810	200	112
8415-99-226-0811	200	120
8415-99-226-0812	200	128
8415-99-226-0813	Outsize	

Additional Information:

Section AT1-6 DMC CG
 Combat Clothing

MATERNITY CLOTHING

**SHIRT, BARRACK, MATERNITY
 Multi Terrain Pattern**



NSN:	8410-99-396-3133	DMC:	CG
Specification:	DC/MS/6985 D02813	D of Q:	Each
		PPQ:	001

Description: Shirt, Barrack, Maternity, MTP, Cotton & Polyester, Front Button Closure, Two Breast Pockets.

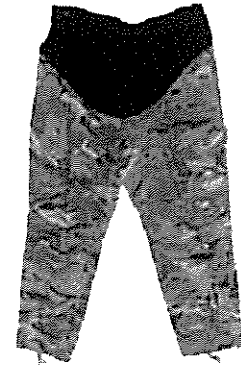
Size Range: 11

<u>NSN</u>	<u>HEIGHT (cm)</u>	<u>CHEST (cm)</u>
8410-99-396-3133	160	88
8410-99-396-3134	160	96
8410-99-396-3135	160	104
8410-99-396-3136	170	88
8410-99-396-3137	170	96
8410-99-396-3138	170	104
8410-99-396-3139	170	112
8410-99-396-3140	180	96
8410-99-396-3141	180	104
8410-99-396-3142	180	112
8410-99-396-3143	Outsize	

Additional Information:

**Section AT1-6 DMC CG
Combat Clothing**

**TROUSERS, COMBAT,
BARRACK, MATERNITY, Multi Terrain
Pattern**



NSN:	8410-99-396-3144	DMC:	CG
Specification:	DC/MS/6986 D02814	D of Q:	Each
		PPQ:	001

Description: Trousers, Combat, Barrack, Maternity, Multi Terrain Pattern, Cotton & Polyester, Twill with Rip stop, Knitted Bump Band, Draw cord adjustment.

Size Range: 10

<u>NSN</u>	<u>INSIDE LEG (cm)</u>	<u>WAIST (cm)</u>	<u>SEAT (cm)</u>
8410-99-396-3144	70	72	88
8410-99-396-3145	70	80	96
8410-99-396-3146	75	72	88
8410-99-396-3147	75	80	96
8410-99-396-3148	75	88	104
8410-99-396-3149	80	72	88
8410-99-396-3150	80	80	96
8410-99-396-3151	80	88	104
8410-99-396-3152	80	96	112
8410-99-396-3153		Outsize	

Additional Information:

Section AT1-6 DMC CG
Combat Clothing

**MATERNITY EXTENDER, Slacks & Skirt,
MTP**



NSN:	8410-99-959-2875	DMC:	CG
Specification:	UK/SC/6996 D02834	D of Q:	Each
		PPQ:	001

Description: Slacks & Skirt, Maternity Extender, MTP (Multi-Terrain Pattern) One Size, Cloth – Twill with Rip stop, Cotton & Polyester.

Size Range: Single

Additional Information: For use before full maternity wear required.

**MATERNITY EXTENDER, Slacks & Skirt,
Black**

NSN:	8410-99-959-2876	DMC:	CG
Specification:	UK/SC/6996 D02834TG	D of Q:	Each
		PPQ:	001

Description: Slacks & Skirt, Maternity Extender, Black, One Size.

Size Range: Single

Additional Information: For use before full maternity wear required. (See photo for MTP Maternity Extender, - the same item but this one is black)

Section AT1-6 DMC CG
Combat Clothing

OTHER CLOTHING

**TROUSERS, EXTREME COLD WEATHER,
Thermally Insulated, Olive with Stuff Sack**

NSN: 8415-99-216-3851	DMC: CG
Specification: DC/CID/6869 Outsize	D of Q: Each
	PPQ: 001

Description: Trousers Thermal, Olive. With Stuff Sack. Used as a mid layer over base layer and combat clothing. Quilted, High Insulation.

Size Range: Single

Additional Information:

**Section AT1-6 DMC CG
Combat Clothing**

INDEX OF NATO STOCK NUMBERS

NSN.....	Page No	NSN.....	Page No
7210-99-667-3479,.....	Page 46	8405-99-435-4020,	Page 13
7210-99-667-3480,.....	Page 46	8405-99-435-4021,	Page 13
8405-99-154-9521,.....	Page 20	8405-99-435-4022,	Page 13
8405-99-342-4195,.....	Page 11	8405-99-435-4023,	Page 14
8405-99-342-4196,.....	Page 11	8405-99-435-4024,	Page 14
8405-99-342-4197,.....	Page 11	8405-99-435-4025,	Page 14
8405-99-342-4198,.....	Page 11	8405-99-435-4026,	Page 14
8405-99-342-4199,.....	Page 11	8405-99-435-4027,	Page 14
8405-99-342-4200,.....	Page 11	8405-99-435-4028,	Page 14
8405-99-342-4201,.....	Page 11	8405-99-435-4029,	Page 14
8405-99-342-4202,.....	Page 11	8405-99-463-8727,	Page 44
8405-99-342-4203,.....	Page 11	8405-99-841-4780,	Page 32
8405-99-342-4204,.....	Page 11	8405-99-841-4781,	Page 32
8405-99-342-4205,.....	Page 11	8405-99-841-4782,	Page 32
8405-99-342-4206,.....	Page 11	8405-99-841-4783,	Page 32
8405-99-342-4207,.....	Page 11	8405-99-841-4784,	Page 32
8405-99-342-4208,.....	Page 11	8405-99-841-4785,	Page 32
8405-99-342-4209,.....	Page 11	8405-99-841-4786,	Page 32
8405-99-342-4210,.....	Page 11	8405-99-841-4787,	Page 32
8405-99-342-4211,.....	Page 11	8405-99-841-4788,	Page 32
8405-99-342-4212,.....	Page 11	8405-99-841-4789,	Page 32
8405-99-342-4213,.....	Page 11	8405-99-841-4790,	Page 32
8405-99-342-4214,.....	Page 11	8405-99-841-4791,	Page 32
8405-99-342-4215,.....	Page 11	8405-99-841-4792,	Page 32
8405-99-342-4216,.....	Page 11	8405-99-841-4793,	Page 32
8405-99-342-4217,.....	Page 11	8405-99-841-4794,	Page 32
8405-99-342-4218,.....	Page 11	8405-99-841-4795,	Page 32
8405-99-342-4219,.....	Page 11	8405-99-841-4796,	Page 32
8405-99-342-4220,.....	Page 11	8405-99-841-4797,	Page 32
8405-99-342-4221,.....	Page 12	8405-99-841-4798,	Page 32
8405-99-342-4222,.....	Page 12	8405-99-841-4799,	Page 32
8405-99-342-4223,.....	Page 12	8405-99-858-3186,	Page 21
8405-99-342-4224,.....	Page 12	8405-99-858-3187,	Page 21
8405-99-342-4225,.....	Page 12	8405-99-991-2142,	Page 20
8405-99-342-4226,.....	Page 12	8405-99-991-2143,	Page 20
8405-99-342-4227,.....	Page 12	8410-99-396-3133,	Page 53
8405-99-435-3997,.....	Page 13	8410-99-396-3134,	Page 53
8405-99-435-3998,.....	Page 13	8410-99-396-3135,	Page 53
8405-99-435-3999,.....	Page 13	8410-99-396-3136,	Page 53
8405-99-435-4000,.....	Page 13	8410-99-396-3137,	Page 53
8405-99-435-4001,.....	Page 13	8410-99-396-3138,	Page 53
8405-99-435-4002,.....	Page 13	8410-99-396-3139,	Page 53
8405-99-435-4003,.....	Page 13	8410-99-396-3140,	Page 53
8405-99-435-4004,.....	Page 13	8410-99-396-3141,	Page 53
8405-99-435-4005,.....	Page 13	8410-99-396-3142,	Page 53
8405-99-435-4006,.....	Page 13	8410-99-396-3143,	Page 53
8405-99-435-4007,.....	Page 13	8410-99-396-3144,	Page 54
8405-99-435-4008,.....	Page 13	8410-99-396-3145,	Page 54
8405-99-435-4009,.....	Page 13	8410-99-396-3146,	Page 54
8405-99-435-4010,.....	Page 13	8410-99-396-3147,	Page 54
8405-99-435-4011,.....	Page 13	8410-99-396-3148,	Page 54
8405-99-435-4012,.....	Page 13	8410-99-396-3149,	Page 54
8405-99-435-4013,.....	Page 13	8410-99-396-3150,	Page 54
8405-99-435-4014,.....	Page 13	8410-99-396-3151,	Page 54
8405-99-435-4015,.....	Page 13	8410-99-396-3152,	Page 54
8405-99-435-4016,.....	Page 13	8410-99-396-3153,	Page 54
8405-99-435-4017,.....	Page 13	8410-99-959-2875,	Page 55
8405-99-435-4018,.....	Page 13	8410-99-959-2876,	Page 55
8405-99-435-4019,.....	Page 13	8415-99-127-8852,	Page 43
		8415-99-136-2680,	Page 38
		8415-99-136-2682,	Page 38

**Section AT1-6 DMC CG
Combat Clothing**

8415-99-136-2684,.....	Page 38	8415-99-226-0812,	Page 52
8415-99-136-2686,.....	Page 38	8415-99-226-0813,	Page 52
8415-99-136-2688,.....	Page 38	8415-99-250-2484,	Page 17
8415-99-136-2690,.....	Page 38	8415-99-250-2485,	Page 17
8415-99-136-2691,.....	Page 38	8415-99-250-2486,	Page 17
8415-99-152-0778,.....	Page 28	8415-99-250-2487,	Page 17
8415-99-152-0779,.....	Page 28	8415-99-250-2488,	Page 17
8415-99-152-0780,.....	Page 28	8415-99-250-2489,	Page 17
8415-99-152-9104,.....	Page 24	8415-99-250-2490,	Page 17
8415-99-152-9105,.....	Page 24	8415-99-250-2491,	Page 17
8415-99-152-9106,.....	Page 24	8415-99-250-2492,	Page 17
8415-99-152-9107,.....	Page 24	8415-99-250-2493,	Page 17
8415-99-152-9108,.....	Page 24	8415-99-250-2494,	Page 17
8415-99-152-9109,.....	Page 24	8415-99-250-2495,	Page 17
8415-99-152-9110,.....	Page 25	8415-99-250-2496,	Page 17
8415-99-152-9111,.....	Page 25	8415-99-250-2497,	Page 17
8415-99-152-9112,.....	Page 25	8415-99-250-2498,	Page 17
8415-99-152-9113,.....	Page 25	8415-99-250-2499,	Page 17
8415-99-152-9114,.....	Page 25	8415-99-250-2500,	Page 17
8415-99-152-9115,.....	Page 25	8415-99-302-3515,	Page 21
8415-99-155-6747,.....	Page 10	8415-99-317-8270,	Page 4
8415-99-155-6748,.....	Page 10	8415-99-317-8271,	Page 4
8415-99-155-6749,.....	Page 10	8415-99-317-8272,	Page 4
8415-99-155-6750,.....	Page 10	8415-99-317-8273,	Page 4
8415-99-155-6751,.....	Page 10	8415-99-317-8274,	Page 4
8415-99-155-6752,.....	Page 10	8415-99-317-8275,	Page 4
8415-99-155-6753,.....	Page 10	8415-99-317-8276,	Page 4
8415-99-155-6754,.....	Page 10	8415-99-317-8277,	Page 4
8415-99-212-5330,.....	Page 51	8415-99-317-8278,	Page 4
8415-99-212-5331,.....	Page 51	8415-99-317-8279,	Page 4
8415-99-212-5332,.....	Page 51	8415-99-317-8280,	Page 4
8415-99-212-5333,.....	Page 51	8415-99-317-8281,	Page 4
8415-99-212-5334,.....	Page 51	8415-99-317-8282,	Page 4
8415-99-212-5335,.....	Page 51	8415-99-317-8283,	Page 4
8415-99-212-5336,.....	Page 51	8415-99-317-8284,	Page 4
8415-99-212-5337,.....	Page 51	8415-99-317-8285,	Page 4
8415-99-212-5338,.....	Page 51	8415-99-317-8286,	Page 4
8415-99-212-5339,.....	Page 51	8415-99-317-8287,	Page 4
8415-99-212-5340,.....	Page 51	8415-99-317-8288,	Page 4
8415-99-212-5341,.....	Page 51	8415-99-317-8289,	Page 4
8415-99-212-5342,.....	Page 51	8415-99-317-8290,	Page 4
8415-99-212-5343,.....	Page 51	8415-99-317-8291,	Page 4
8415-99-212-5344,.....	Page 51	8415-99-317-8292,	Page 4
8415-99-216-3851,.....	Page 56	8415-99-317-8293,	Page 4
8415-99-226-0794,.....	Page 52	8415-99-317-8294,	Page 4
8415-99-226-0795,.....	Page 52	8415-99-317-8295,	Page 4
8415-99-226-0796,.....	Page 52	8415-99-317-8296,	Page 4
8415-99-226-0797,.....	Page 52	8415-99-317-8297,	Page 4
8415-99-226-0798,.....	Page 52	8415-99-317-8298,	Page 5
8415-99-226-0799,.....	Page 52	8415-99-317-8299,	Page 5
8415-99-226-0800,.....	Page 52	8415-99-317-8300,	Page 5
8415-99-226-0801,.....	Page 52	8415-99-317-8301,	Page 5
8415-99-226-0802,.....	Page 52	8415-99-317-8302,	Page 5
8415-99-226-0803,.....	Page 52	8415-99-317-8303,	Page 5
8415-99-226-0804,.....	Page 52	8415-99-317-8304,	Page 5
8415-99-226-0805,.....	Page 52	8415-99-396-5988,	Page 15
8415-99-226-0806,.....	Page 52	8415-99-396-5989,	Page 15
8415-99-226-0807,.....	Page 52	8415-99-396-5990,	Page 15
8415-99-226-0808,.....	Page 52	8415-99-396-5991,	Page 15
8415-99-226-0809,.....	Page 52	8415-99-396-5992,	Page 15
8415-99-226-0810,.....	Page 52	8415-99-396-5993,	Page 15
8415-99-226-0811,.....	Page 52	8415-99-396-5994,	Page 15

**Section AT1-6 DMC CG
Combat Clothing**

8415-99-396-5995,.....	Page 15	8415-99-460-1932,	Page 22
8415-99-396-5996,.....	Page 15	8415-99-460-1933,	Page 22
8415-99-396-5997,.....	Page 15	8415-99-460-1934,	Page 22
8415-99-396-5998,.....	Page 15	8415-99-460-1935,	Page 22
8415-99-396-5999,.....	Page 15	8415-99-460-1936,	Page 22
8415-99-396-6000,.....	Page 15	8415-99-460-1937,	Page 22
8415-99-396-6001,.....	Page 15	8415-99-471-4759,	Page 49
8415-99-396-6002,.....	Page 15	8415-99-471-4760,	Page 49
8415-99-396-6003,.....	Page 15	8415-99-471-4761,	Page 49
8415-99-396-6004,.....	Page 15	8415-99-471-4762,	Page 49
8415-99-410-4582,.....	Page 5	8415-99-471-4985,	Page 39
8415-99-418-3293,.....	Page 31	8415-99-471-4986,	Page 39
8415-99-418-3294,.....	Page 31	8415-99-471-4987,	Page 39
8415-99-418-3295,.....	Page 31	8415-99-471-4988,	Page 39
8415-99-418-3296,.....	Page 31	8415-99-471-4989,	Page 42
8415-99-418-3297,.....	Page 31	8415-99-471-4990,	Page 42
8415-99-418-3298,.....	Page 31	8415-99-471-4991,	Page 42
8415-99-418-3299,.....	Page 31	8415-99-471-4992,	Page 42
8415-99-418-3300,.....	Page 31	8415-99-471-4993,	Page 48
8415-99-418-3301,.....	Page 31	8415-99-471-4994,	Page 48
8415-99-418-3302,.....	Page 31	8415-99-471-4995,	Page 48
8415-99-418-3303,.....	Page 31	8415-99-471-4996,	Page 48
8415-99-418-3304,.....	Page 31	8415-99-488-8932,	Page 9
8415-99-418-3305,.....	Page 31	8415-99-488-8933,	Page 9
8415-99-418-3306,.....	Page 31	8415-99-488-8934,	Page 9
8415-99-418-3307,.....	Page 30	8415-99-488-8935,	Page 9
8415-99-418-3308,.....	Page 30	8415-99-488-8936,	Page 9
8415-99-418-3309,.....	Page 30	8415-99-488-8937,	Page 9
8415-99-418-3310,.....	Page 30	8415-99-488-8938,	Page 9
8415-99-418-3311,.....	Page 30	8415-99-488-8939,	Page 9
8415-99-418-3312,.....	Page 30	8415-99-517-5411,	Page 35
8415-99-418-3313,.....	Page 30	8415-99-519-8268,	Page 44
8415-99-418-3314,.....	Page 30	8415-99-597-0428,	Page 3
8415-99-418-3315,.....	Page 30	8415-99-597-0429,	Page 3
8415-99-418-3316,.....	Page 30	8415-99-597-0430,	Page 3
8415-99-418-3317,.....	Page 30	8415-99-597-0431,	Page 3
8415-99-418-3318,.....	Page 30	8415-99-597-0432,	Page 3
8415-99-418-3319,.....	Page 30	8415-99-597-0433,	Page 3
8415-99-418-3320,.....	Page 30	8415-99-597-0434,	Page 3
8415-99-418-3321,.....	Page 37	8415-99-597-0435,	Page 3
8415-99-418-3322,.....	Page 37	8415-99-597-0436,	Page 3
8415-99-418-3323,.....	Page 37	8415-99-597-0437,	Page 3
8415-99-418-3324,.....	Page 37	8415-99-597-0438,	Page 3
8415-99-418-3325,.....	Page 37	8415-99-597-0439,	Page 3
8415-99-418-3326,.....	Page 37	8415-99-597-0440,	Page 3
8415-99-418-3327,.....	Page 37	8415-99-597-0441,	Page 3
8415-99-418-3328,.....	Page 37	8415-99-597-0442,	Page 3
8415-99-418-3329,.....	Page 37	8415-99-597-0443,	Page 3
8415-99-418-3330,.....	Page 37	8415-99-597-0444,	Page 3
8415-99-418-3331,.....	Page 37	8415-99-597-0445,	Page 3
8415-99-418-3332,.....	Page 37	8415-99-597-0446,	Page 3
8415-99-418-3333,.....	Page 37	8415-99-597-0447,	Page 3
8415-99-418-3334,.....	Page 37	8415-99-597-0448,	Page 3
8415-99-458-7535,.....	Page 50	8415-99-597-0910,	Page 6
8415-99-458-7536,.....	Page 50	8415-99-597-0911,	Page 6
8415-99-458-7537,.....	Page 50	8415-99-597-0912,	Page 6
8415-99-458-7538,.....	Page 50	8415-99-597-0913,	Page 6
8415-99-458-7539,.....	Page 50	8415-99-597-0914,	Page 6
8415-99-458-7540,.....	Page 49	8415-99-597-0915,	Page 6
8415-99-458-7541,.....	Page 49	8415-99-597-0916,	Page 6
8415-99-458-7542,.....	Page 49	8415-99-597-0917,	Page 6
8415-99-458-7543,.....	Page 49	8415-99-597-0918,	Page 6

**Section AT1-6 DMC CG
Combat Clothing**

8415-99-813-3262,.....	Page 26	8415-99-844-1324,	Page 16
8415-99-813-3263,.....	Page 26	8415-99-856-3970,	Page 41
8415-99-813-3264,.....	Page 26	8415-99-856-3971,	Page 41
8415-99-813-3265,.....	Page 26	8415-99-915-8224,	Page 18
8415-99-813-3266,.....	Page 45	8415-99-915-8225,	Page 18
8415-99-813-3267,.....	Page 45	8415-99-915-8226,	Page 18
8415-99-813-3268,.....	Page 45	8415-99-915-8227,	Page 18
8415-99-813-3269,.....	Page 45	8415-99-915-8228,	Page 18
8415-99-813-3270,.....	Page 45	8415-99-915-8229,	Page 18
8415-99-813-3271,.....	Page 45	8415-99-915-8230,	Page 18
8415-99-813-3289,.....	Page 26	8415-99-915-8231,	Page 18
8415-99-813-3290,.....	Page 26	8415-99-915-8232,	Page 18
8415-99-813-3291,.....	Page 26	8415-99-915-8233,	Page 18
8415-99-813-3292,.....	Page 26	8415-99-915-8234,	Page 18
8415-99-813-3293,.....	Page 26	8415-99-915-8235,	Page 18
8415-99-813-3294,.....	Page 26	8415-99-915-8236,	Page 18
8415-99-814-7165,.....	Page 40	8415-99-915-8237,	Page 18
8415-99-814-7166,.....	Page 40	8415-99-915-8238,	Page 18
8415-99-814-7167,.....	Page 40	8415-99-915-8239,	Page 18
8415-99-814-7168,.....	Page 48	8415-99-915-8240,	Page 18
8415-99-814-7169,.....	Page 48	8415-99-926-7883,	Page 28
8415-99-814-7170,.....	Page 48	8415-99-926-7884,	Page 28
8415-99-814-7171,.....	Page 42	8415-99-930-4128,	Page 51
8415-99-814-7172,.....	Page 42	8415-99-930-4129,	Page 51
8415-99-814-7173,.....	Page 42	8415-99-930-4130,	Page 51
8415-99-837-6198,.....	Page 27	8415-99-930-4131,	Page 51
8415-99-837-6199,.....	Page 27	8415-99-930-4132,	Page 51
8415-99-837-6200,.....	Page 27	8415-99-976-1961,	Page 41
8415-99-837-6201,.....	Page 27	8415-99-976-1962,	Page 41
8415-99-837-6202,.....	Page 27	8415-99-976-1963,	Page 41
8415-99-837-6203,.....	Page 27	8415-99-978-2182,	Page 43
8415-99-837-6204,.....	Page 27	8420-99-668-3844,	Page 23
8415-99-837-6205,.....	Page 27	8420-99-668-3845,	Page 23
8415-99-837-6206,.....	Page 27	8420-99-668-3846,	Page 23
8415-99-837-6207,.....	Page 27	8420-99-668-3847,	Page 23
8415-99-837-6208,.....	Page 27	8420-99-668-3848,	Page 23
8415-99-837-6209,.....	Page 27	8420-99-668-3849,	Page 23
8415-99-844-1308,.....	Page 16	8420-99-688-2782,	Page 23
8415-99-844-1309,.....	Page 16	8420-99-688-2783,	Page 23
8415-99-844-1310,.....	Page 16	8420-99-688-2784,	Page 23
8415-99-844-1311,.....	Page 16	8420-99-688-2785,	Page 23
8415-99-844-1312,.....	Page 16	8420-99-688-2786,	Page 23
8415-99-844-1313,.....	Page 16	8420-99-688-2787,	Page 23
8415-99-844-1314,.....	Page 16	8420-99-975-7529,	Page 45
8415-99-844-1315,.....	Page 16	8425-99-464-2423,	Page 24
8415-99-844-1316,.....	Page 16	8425-99-464-2424,	Page 24
8415-99-844-1317,.....	Page 16	8425-99-464-2425,	Page 24
8415-99-844-1318,.....	Page 16	8425-99-464-2426,	Page 24
8415-99-844-1319,.....	Page 16	8425-99-464-2427,	Page 24
8415-99-844-1320,.....	Page 16	8425-99-464-2428,	Page 24
8415-99-844-1321,.....	Page 16	8440-99-876-9586,	Page 44
8415-99-844-1322,.....	Page 16	8465-99-132-1441,	Page 46
8415-99-844-1323,.....	Page 16	8465-99-977-9504,	Page 39