



Department
of Health &
Social Care

Yorkshire and Humber: lower tier local authority watchlist – epidemiological charts

Produced 28 December 2020

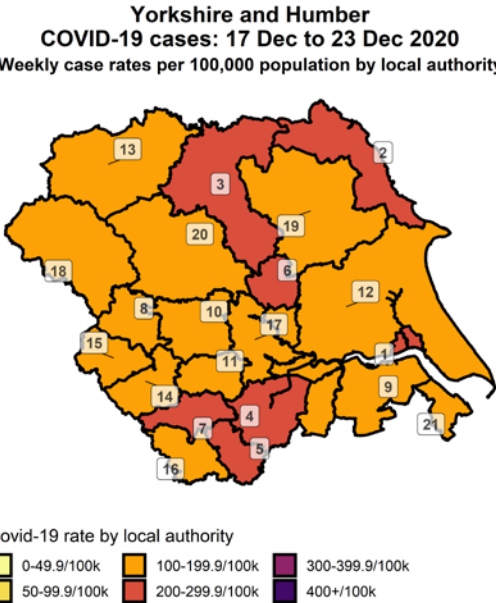
NOTES

- This data is provided by Public Health England for the purpose of monitoring and supporting the management of Covid-19 infections in Local Authorities.
- The reports are produced using 2019 ONS population data
- If you would like to know the weekly trend for the case rate charts and persons tested chart please see Lower-tier local authority watchlist.

Weekly case rate per 100,000 population by local authority: 17 Dec to 23 Dec 2020

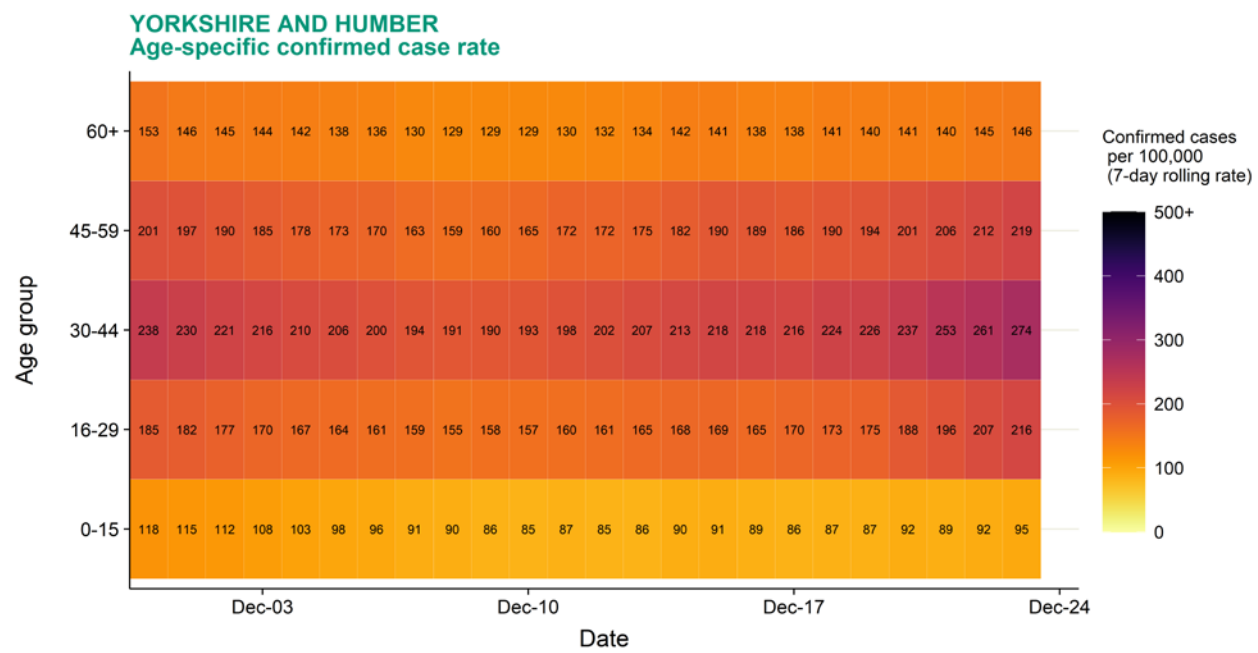
Rank	Local Authority	Case Rate (per 100,000)	Number of cases (1 week)
1	Kingston upon Hull, City of	260.2	676
2	Scarborough	240.9	262
3	Hambleton	238.0	218
4	Doncaster	223.5	697
5	Rotherham	218.5	580
6	York	218.4	460
7	Barnsley	205.8	508
8	Bradford	190.6	1029
9	North Lincolnshire	188.1	324
10	Leeds	184.8	1466

Rank	Local Authority	Case Rate (per 100,000)	Number of cases (1 week)
11	Wakefield	182.9	637
12	East Riding of Yorkshire	179.1	611
13	Richmondshire	178.7	96
14	Kirklees	178.3	784
15	Calderdale	175.0	370
16	Sheffield	172.4	1008
17	Selby	171.0	155
18	Craven	147.0	84
19	Ryedale	146.3	81
20	Harrogate	114.4	184
21	North East Lincolnshire	110.9	177



Data from SGSS; Pillar 1 and 2 testing. Figure by Outbreak Surveillance Team, Public Health England.
Contains National Statistics data including 2019 population estimates Â© Crown copyright and database right 2020

Age-stratified heatmap of weekly case rate for Yorkshire and Humber : 30 Nov to 23 Dec 2020



Source: Case data from SGSS. Produced by Outbreak Surveillance Team, PHE

Contains National Statistics data Â© Crown copyright and database right 2020

Age-stratified heatmap of weekly case rate by local authority for Yorkshire and Humber : 30 Nov to 23 Dec 2020



Source: Case data from SGSS. Produced by Outbreak Surveillance Team, PHE

Contains National Statistics data Â© Crown copyright and database right 2020

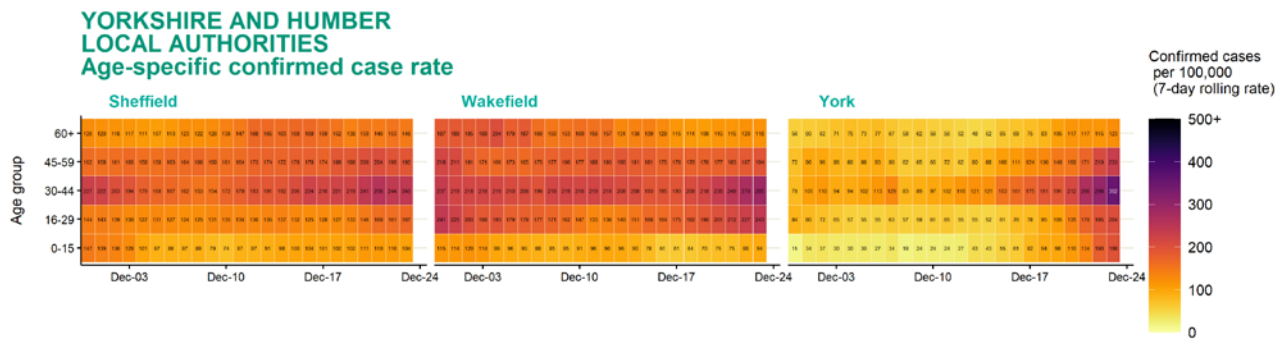
Age-stratified heatmap of weekly case rate by local authority for Yorkshire and Humber : 30 Nov to 23 Dec 2020



Source: Case data from SGSS. Produced by Outbreak Surveillance Team, PHE

Contains National Statistics data Â© Crown copyright and database right 2020

Age-stratified heatmap of weekly case rate by local authority for Yorkshire and Humber : 30 Nov to 23 Dec 2020

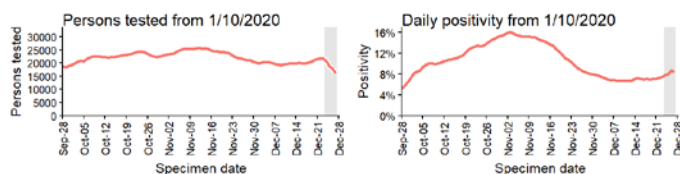
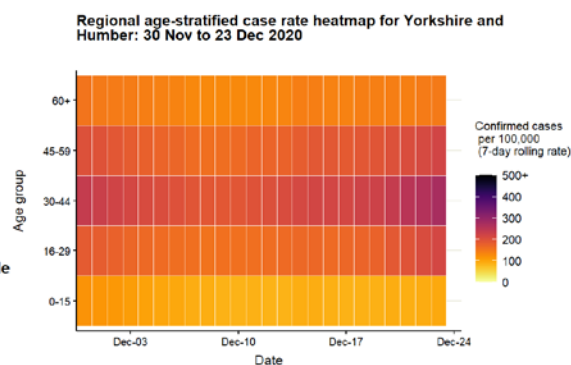
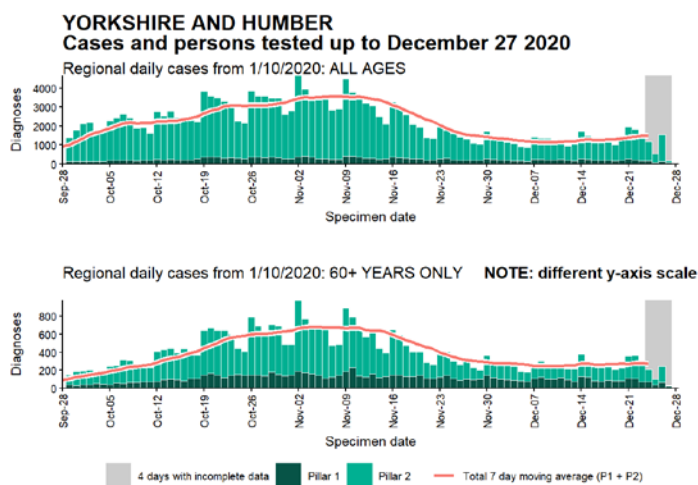


Date

Source: Case data from SGSS. Produced by Outbreak Surveillance Team, PHE

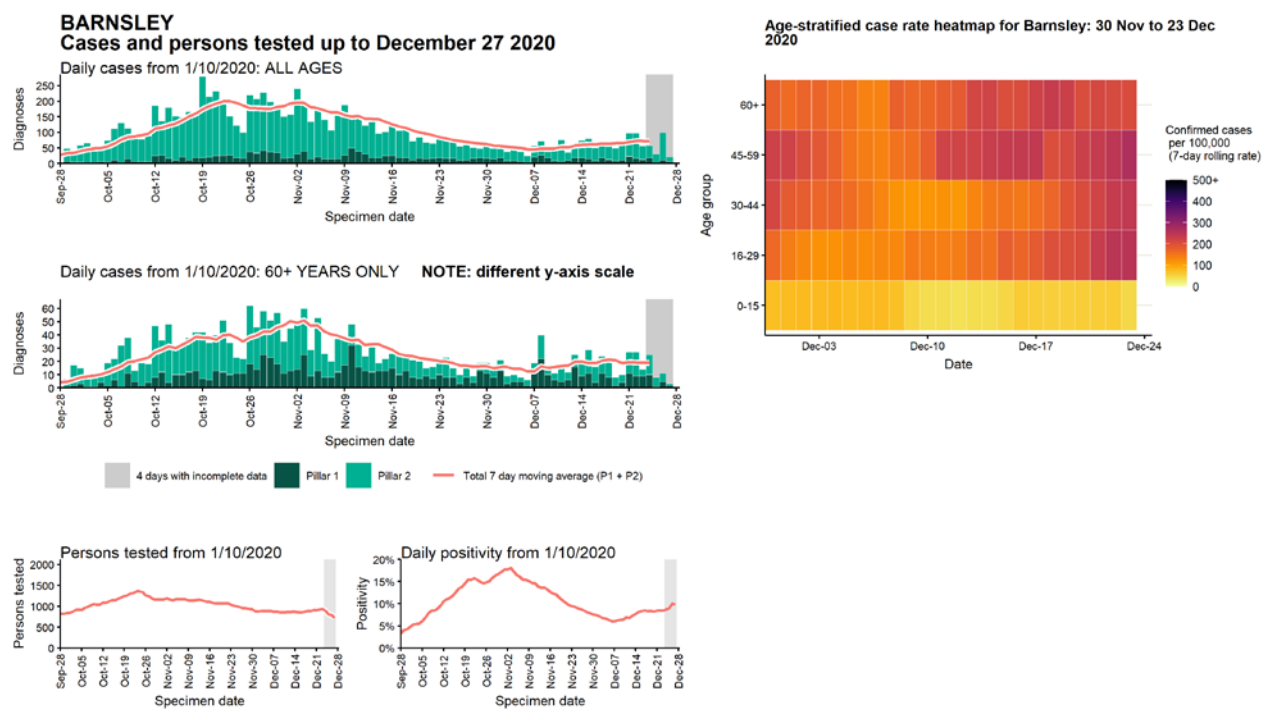
Contains National Statistics data Â© Crown copyright and database right 2020

Regional case numbers, testing numbers and positivity, Yorkshire and Humber : 01 Sep to 27 Dec 2020



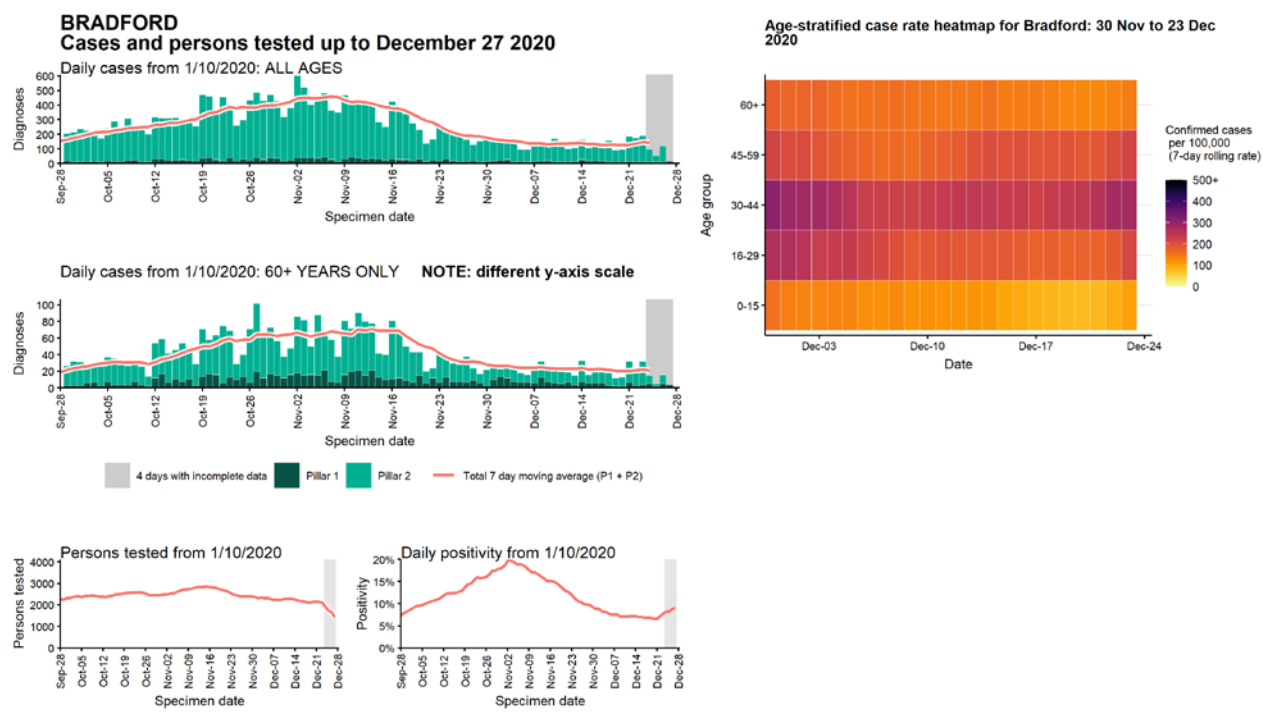
Data from SGSS. Produced by Outbreak Surveillance Team, PHE

Case numbers, testing numbers and positivity, Barnsley : 01 Sep to 27 Dec 2020



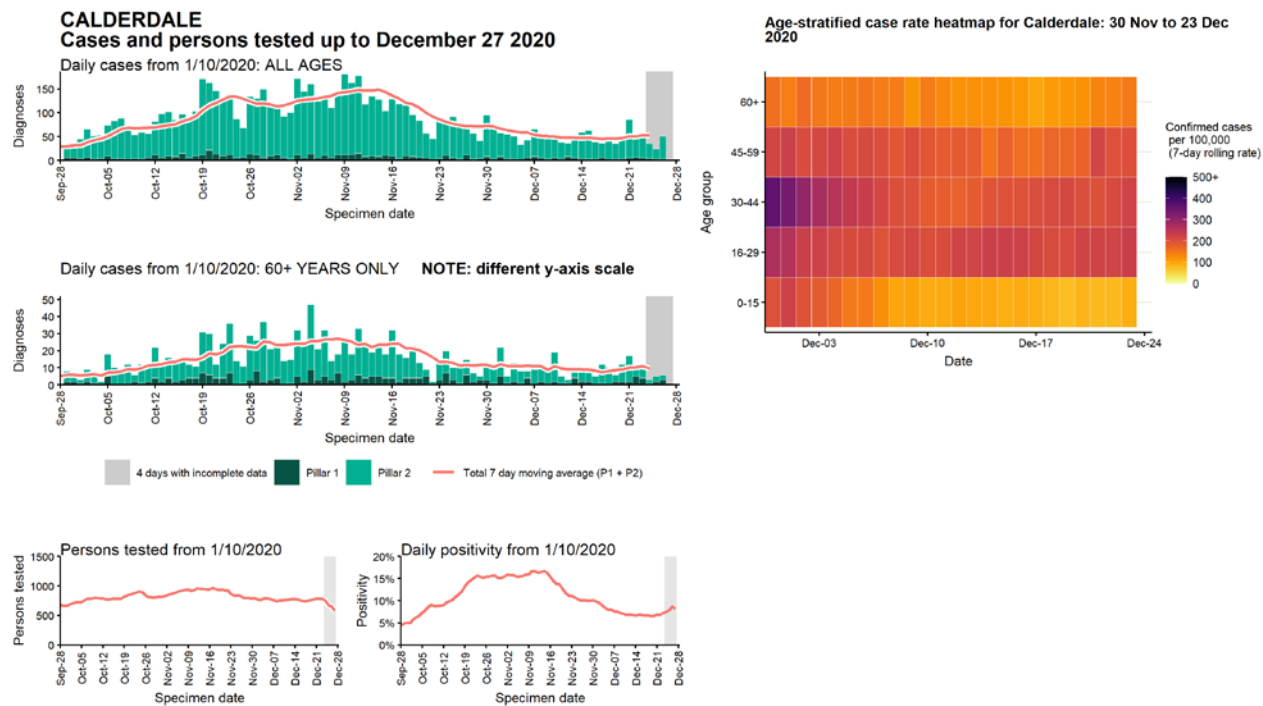
Data from SGSS. Produced by Outbreak Surveillance Team, PHE

Case numbers, testing numbers and positivity, Bradford : 01 Sep to 27 Dec 2020



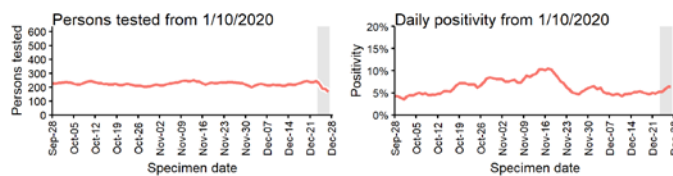
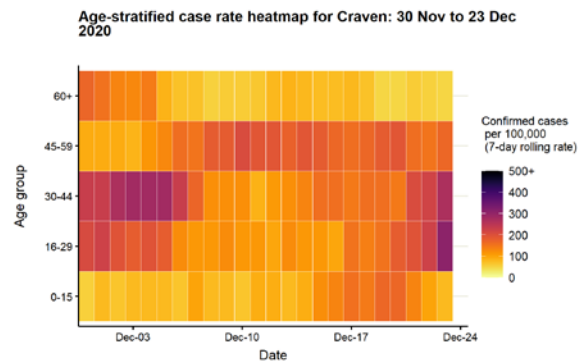
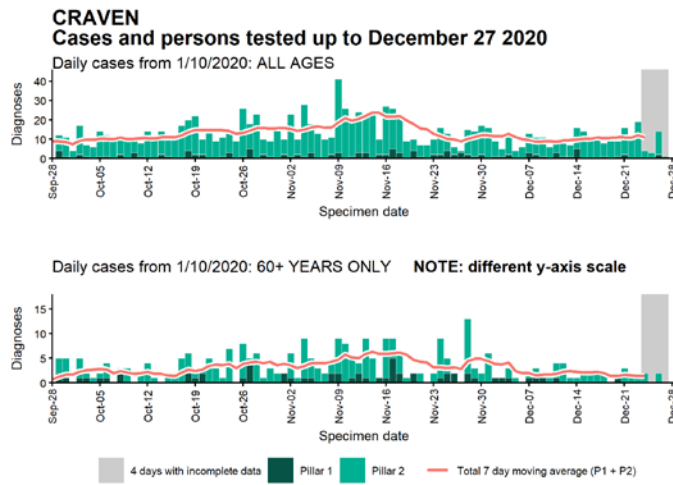
Data from SGSS. Produced by Outbreak Surveillance Team, PHE

Case numbers, testing numbers and positivity, Calderdale : 01 Sep to 27 Dec 2020



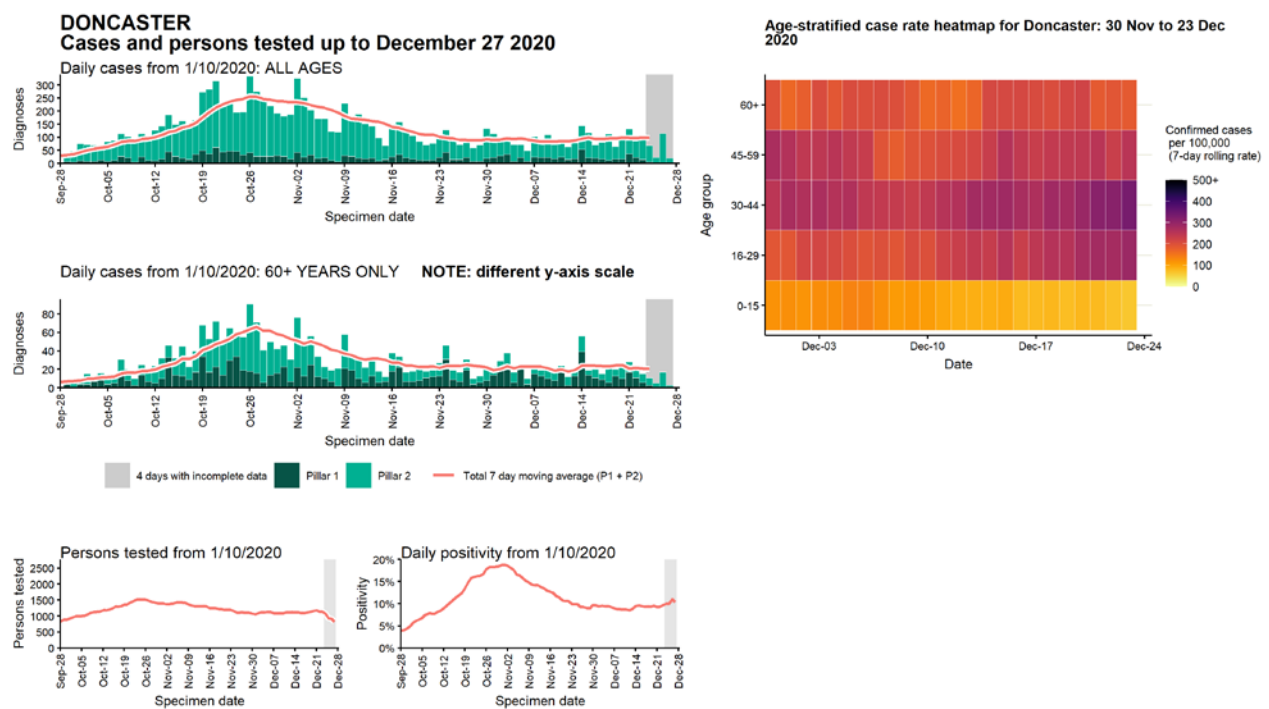
Data from SGSS. Produced by Outbreak Surveillance Team, PHE

Case numbers, testing numbers and positivity, Craven : 01 Sep to 27 Dec 2020



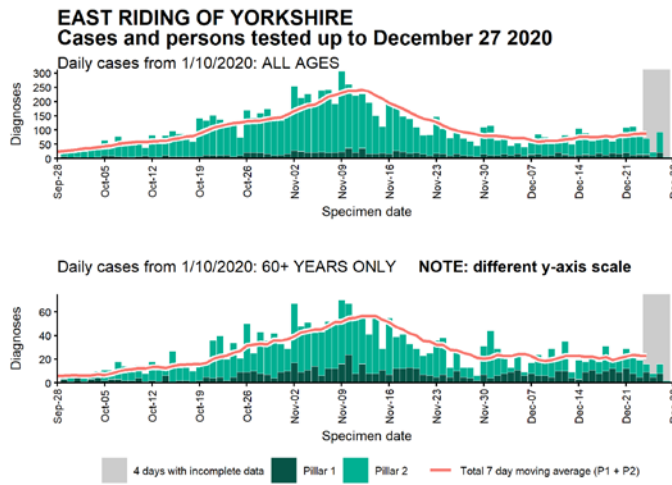
Data from SGSS. Produced by Outbreak Surveillance Team, PHE

Case numbers, testing numbers and positivity, Doncaster : 01 Sep to 27 Dec 2020

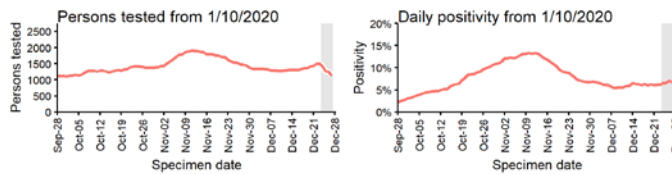
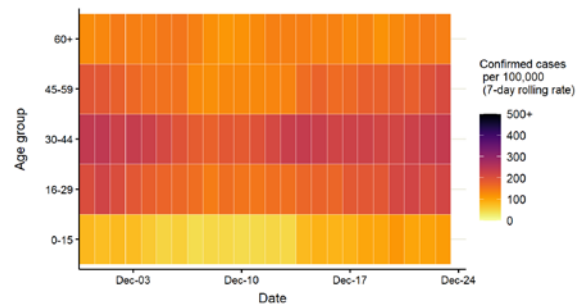


Data from SGSS. Produced by Outbreak Surveillance Team, PHE

Case numbers, testing numbers and positivity, East Riding of Yorkshire : 01 Sep to 27 Dec 2020

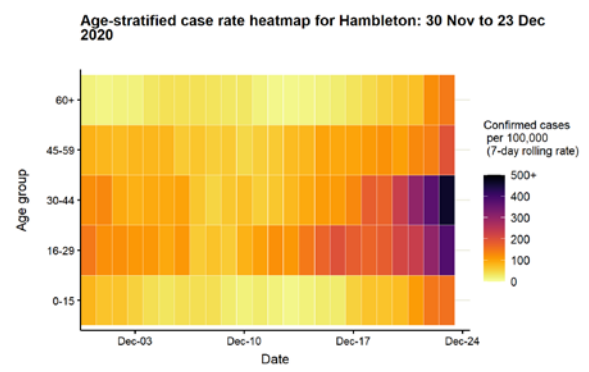
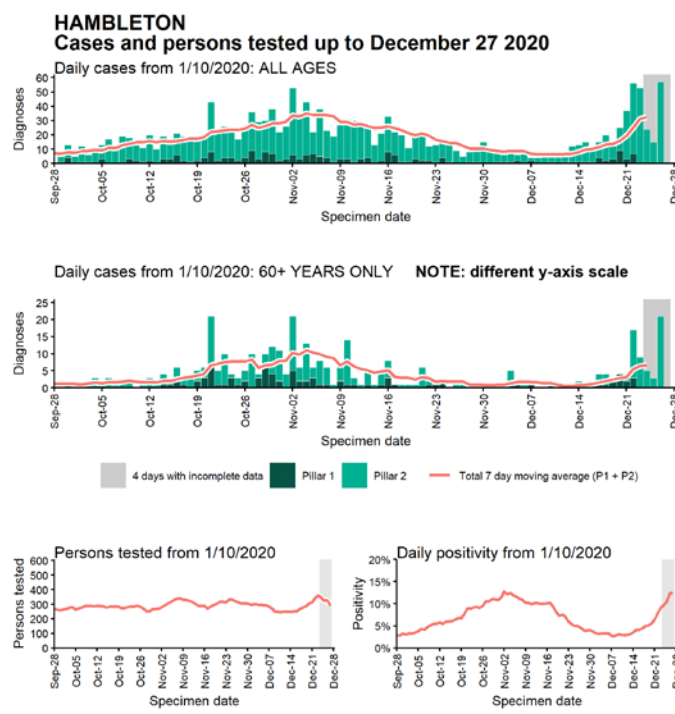


Age-stratified case rate heatmap for East Riding of Yorkshire: 30 Nov to 23 Dec 2020



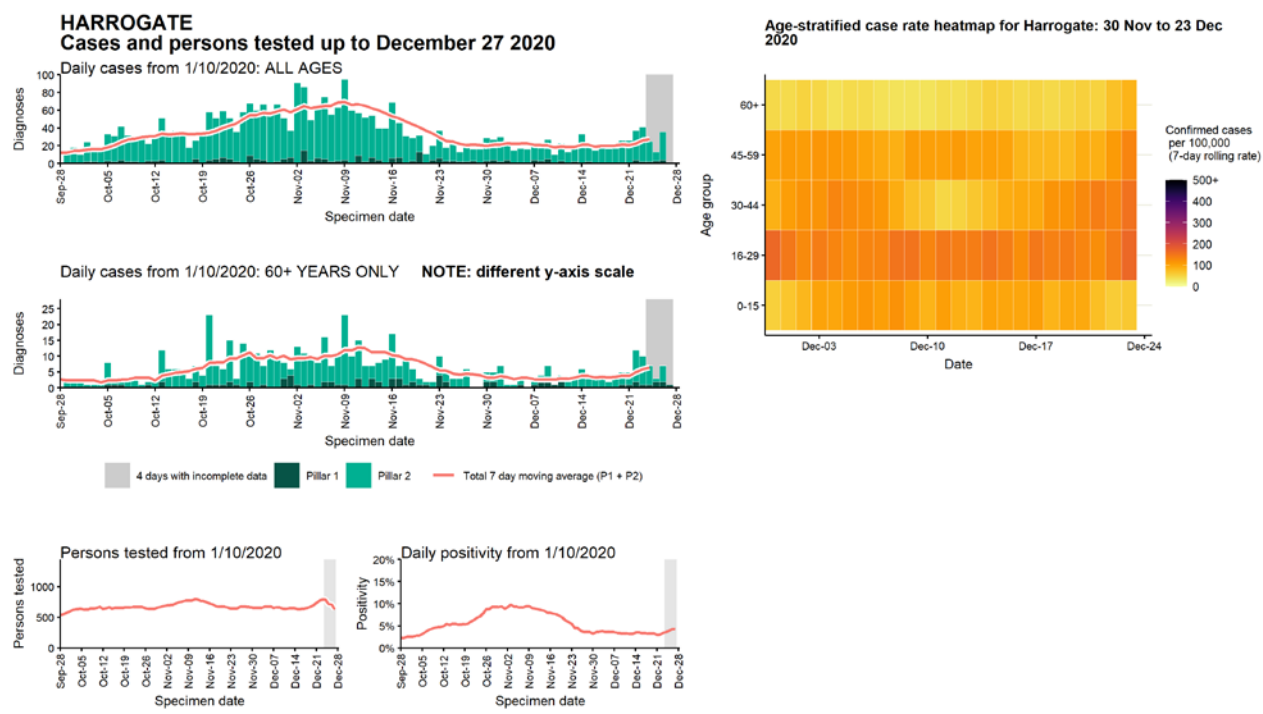
Data from SGSS. Produced by Outbreak Surveillance Team, PHE

Case numbers, testing numbers and positivity, Hambleton : 01 Sep to 27 Dec 2020



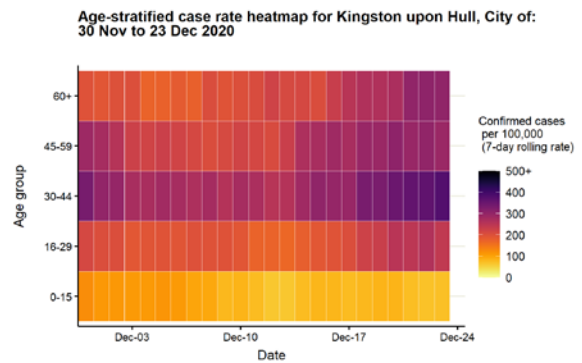
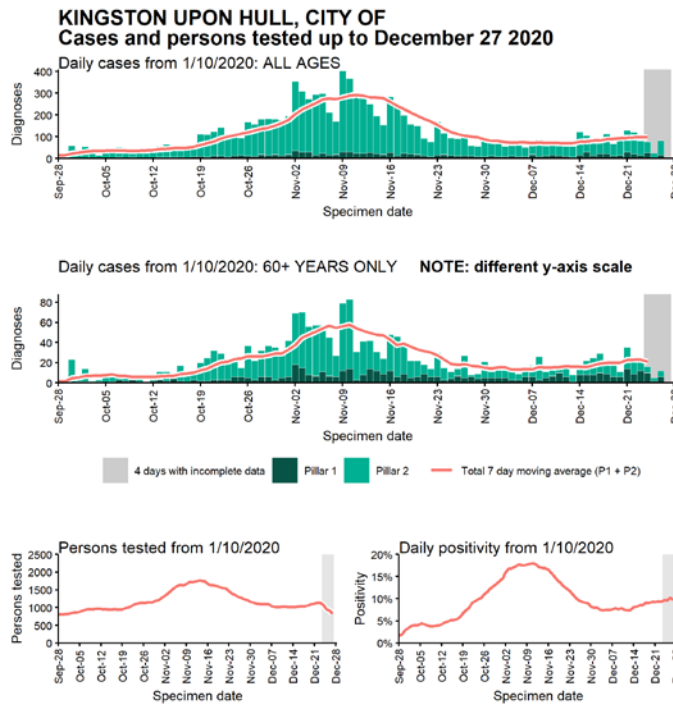
Data from SGSS. Produced by Outbreak Surveillance Team, PHE

Case numbers, testing numbers and positivity, Harrogate : 01 Sep to 27 Dec 2020



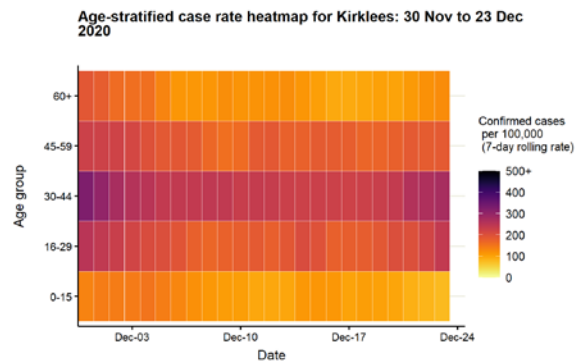
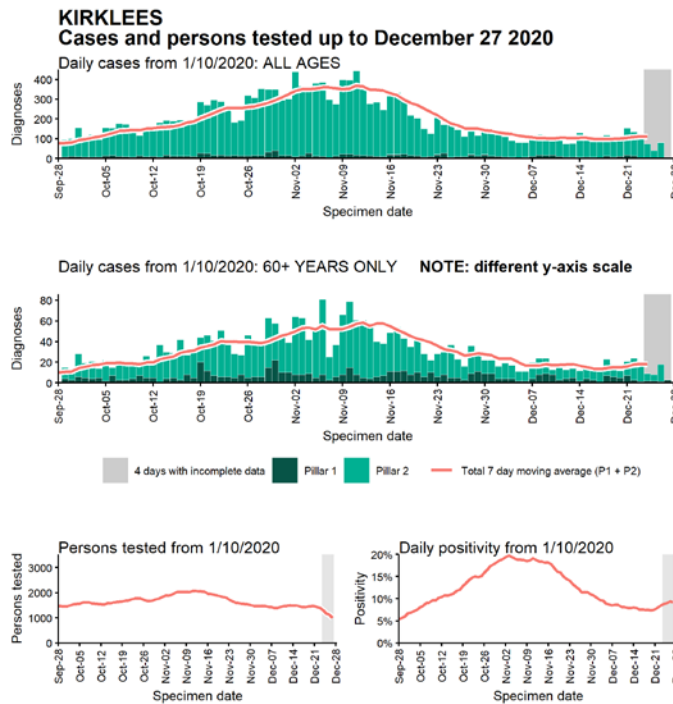
Data from SGSS. Produced by Outbreak Surveillance Team, PHE

Case numbers, testing numbers and positivity, Kingston upon Hull, City of : 01 Sep to 27 Dec 2020



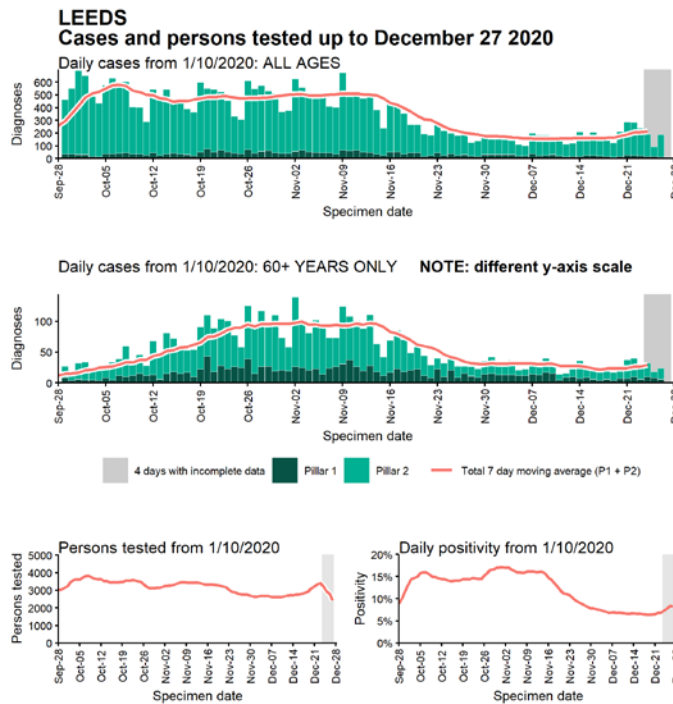
Data from SGSS. Produced by Outbreak Surveillance Team, PHE

Case numbers, testing numbers and positivity, Kirklees : 01 Sep to 27 Dec 2020

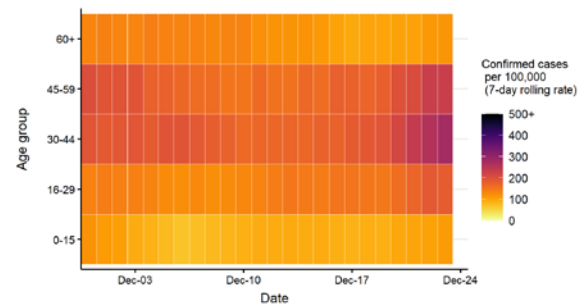


Data from SGSS. Produced by Outbreak Surveillance Team, PHE

Case numbers, testing numbers and positivity, Leeds : 01 Sep to 27 Dec 2020

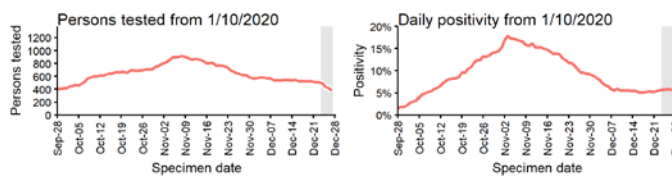
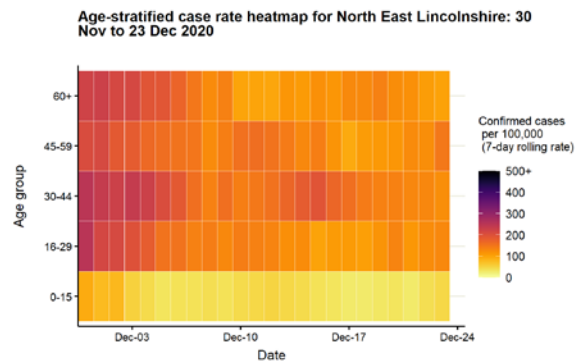
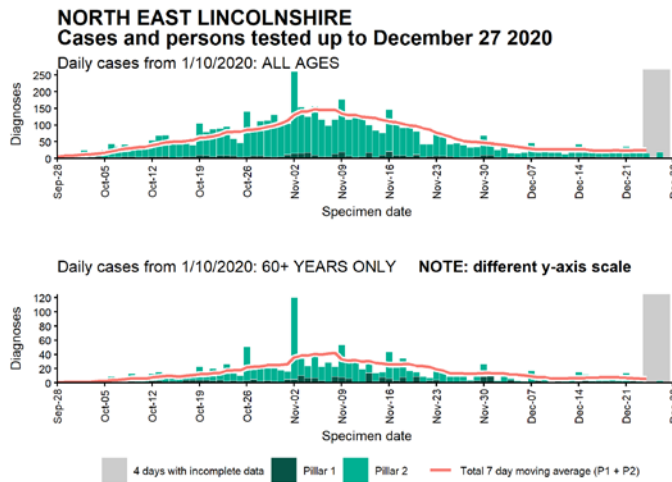


Age-stratified case rate heatmap for Leeds: 30 Nov to 23 Dec 2020



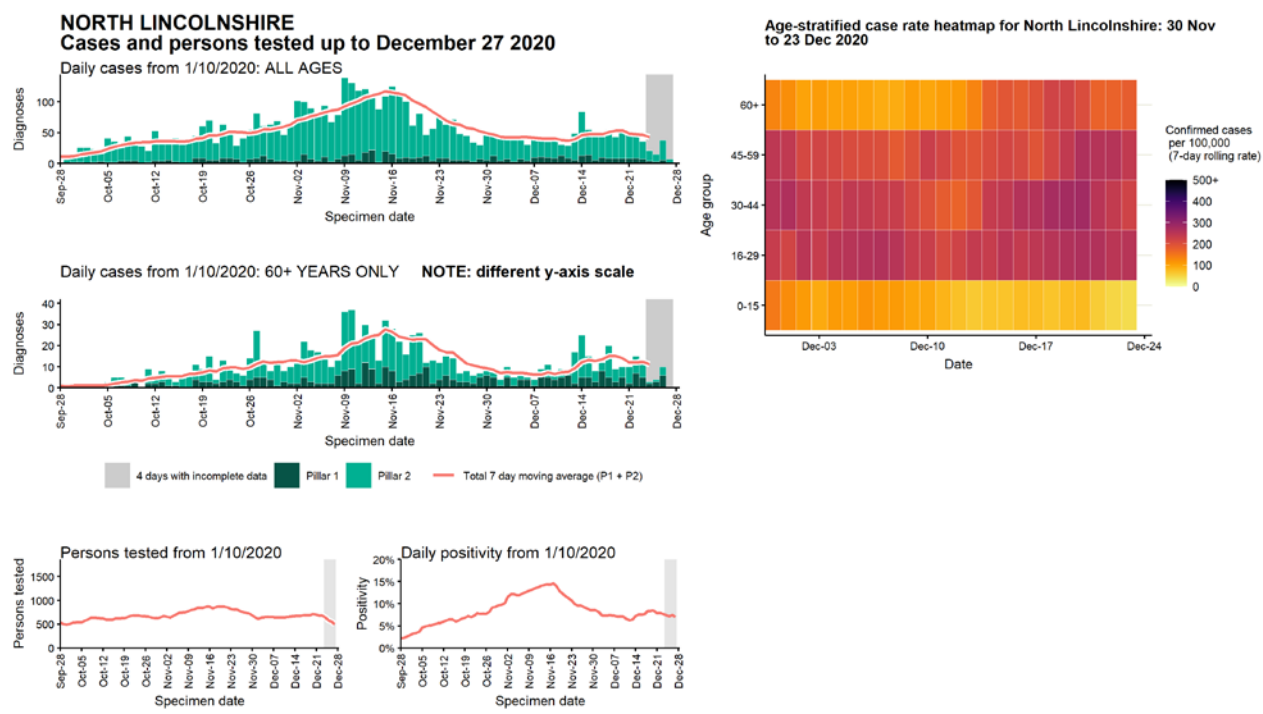
Data from SGSS. Produced by Outbreak Surveillance Team, PHE

Case numbers, testing numbers and positivity, North East Lincolnshire : 01 Sep to 27 Dec 2020



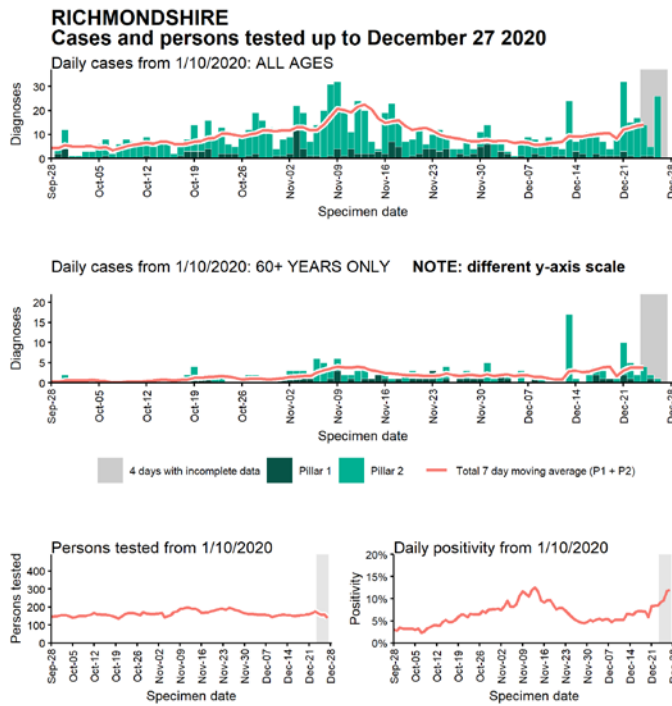
Data from SGSS. Produced by Outbreak Surveillance Team, PHE

Case numbers, testing numbers and positivity, North Lincolnshire :
01 Sep to 27 Dec 2020

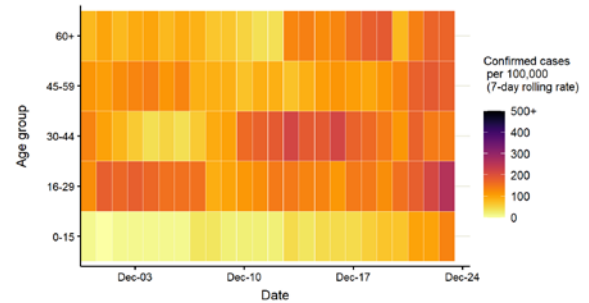


Data from SGSS. Produced by Outbreak Surveillance Team, PHE

Case numbers, testing numbers and positivity, Richmondshire : 01 Sep to 27 Dec 2020

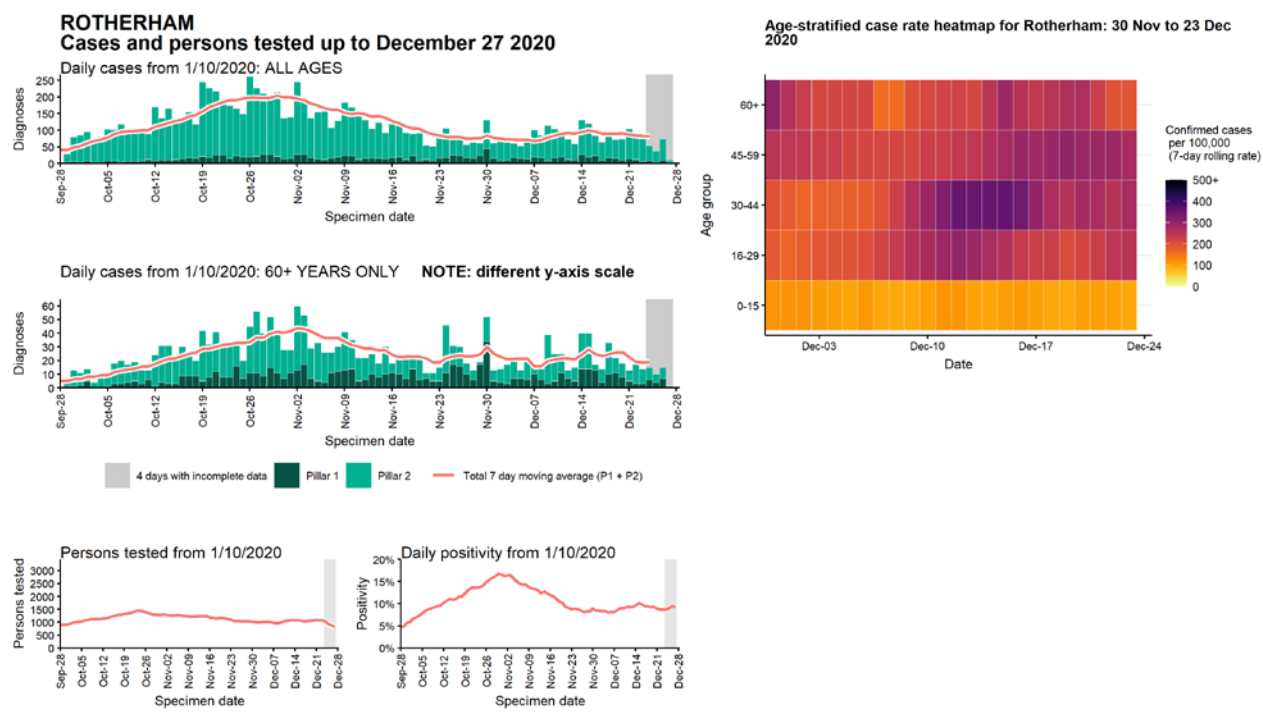


Age-stratified case rate heatmap for Richmondshire: 30 Nov to 23 Dec 2020



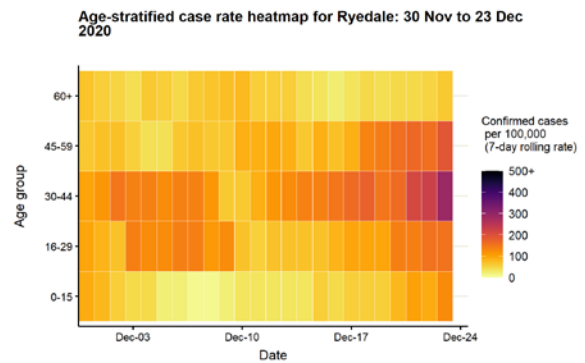
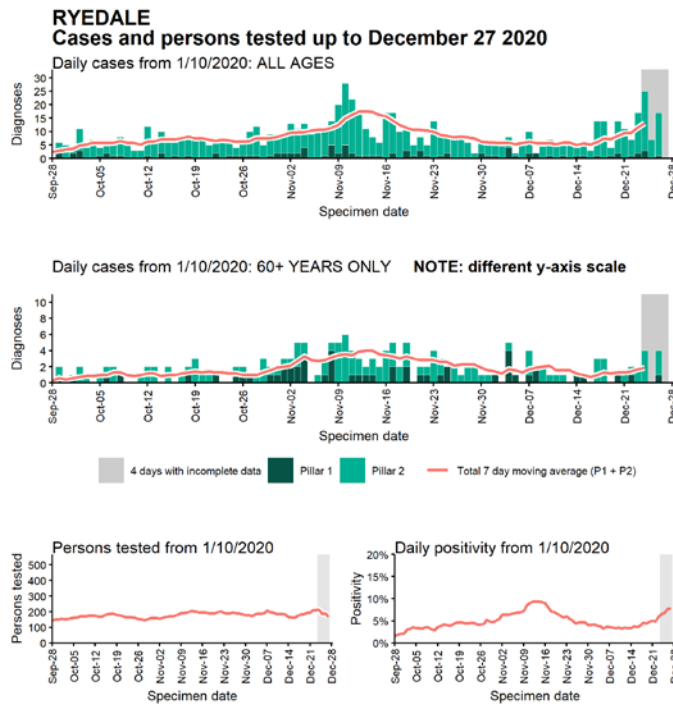
Data from SGSS. Produced by Outbreak Surveillance Team, PHE

Case numbers, testing numbers and positivity, Rotherham : 01 Sep to 27 Dec 2020



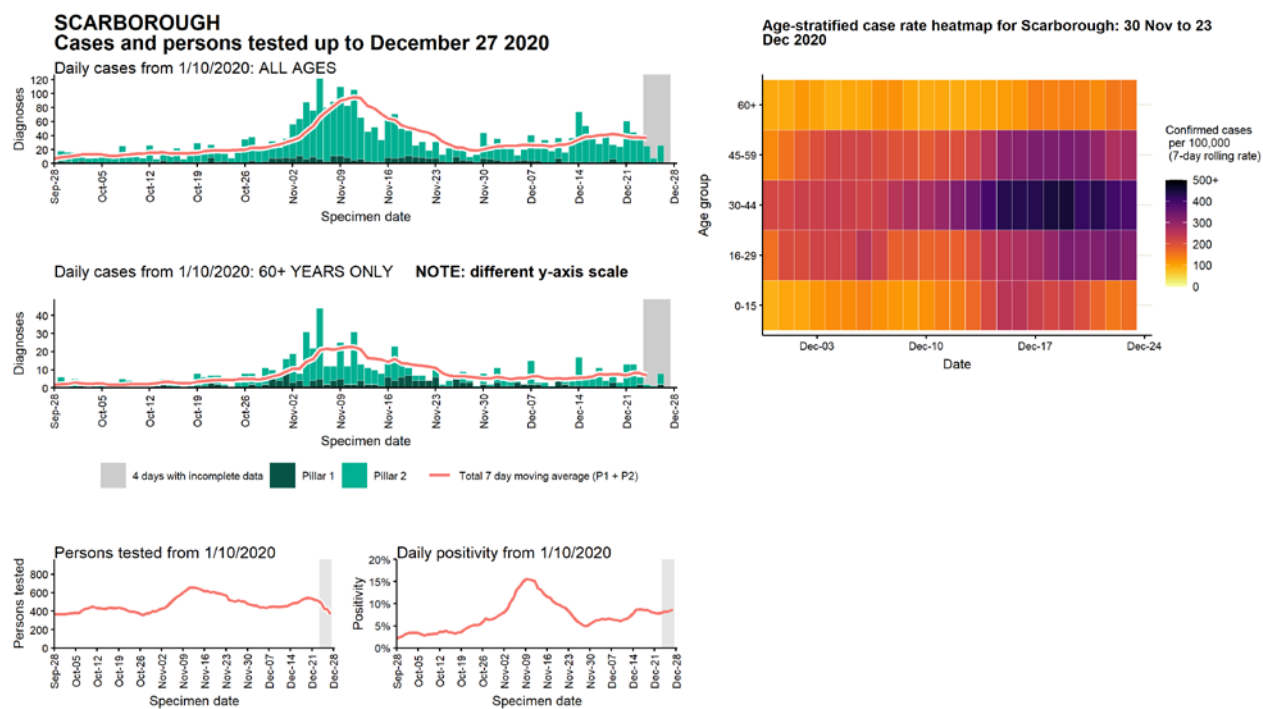
Data from SGSS. Produced by Outbreak Surveillance Team, PHE

Case numbers, testing numbers and positivity, Ryedale : 01 Sep to 27 Dec 2020



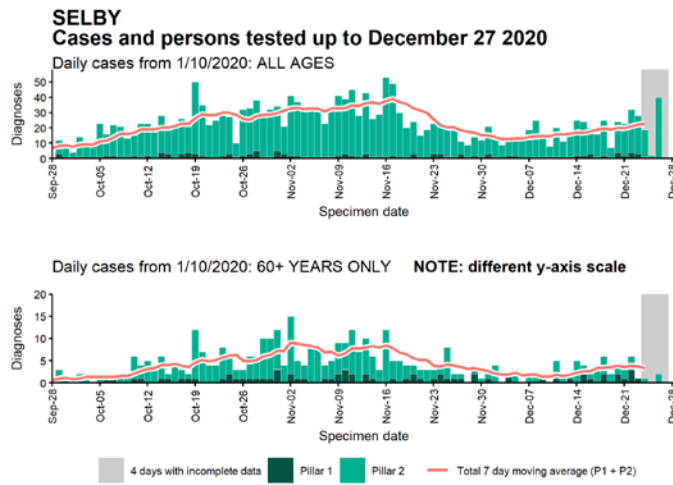
Data from SGSS. Produced by Outbreak Surveillance Team, PHE

Case numbers, testing numbers and positivity, Scarborough : 01 Sep to 27 Dec 2020

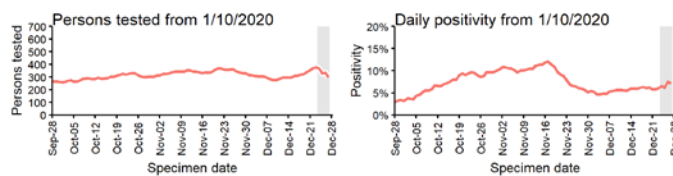
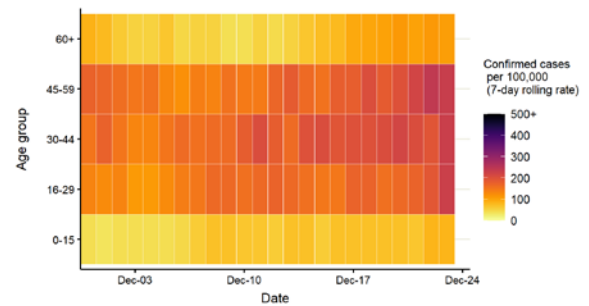


Data from SGSS. Produced by Outbreak Surveillance Team, PHE

Case numbers, testing numbers and positivity, Selby : 01 Sep to 27 Dec 2020

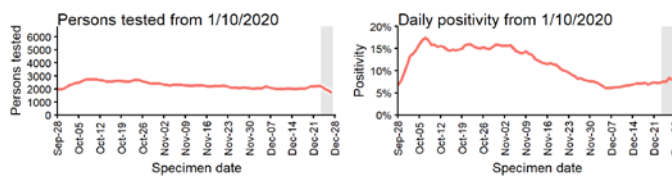
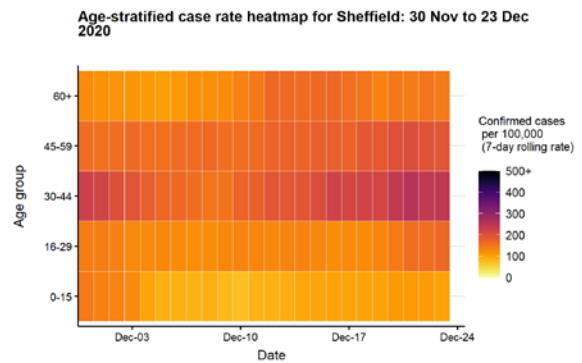
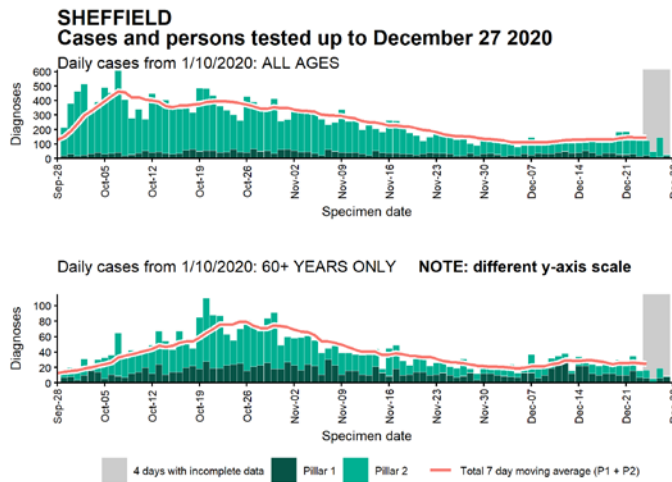


Age-stratified case rate heatmap for Selby: 30 Nov to 23 Dec 2020



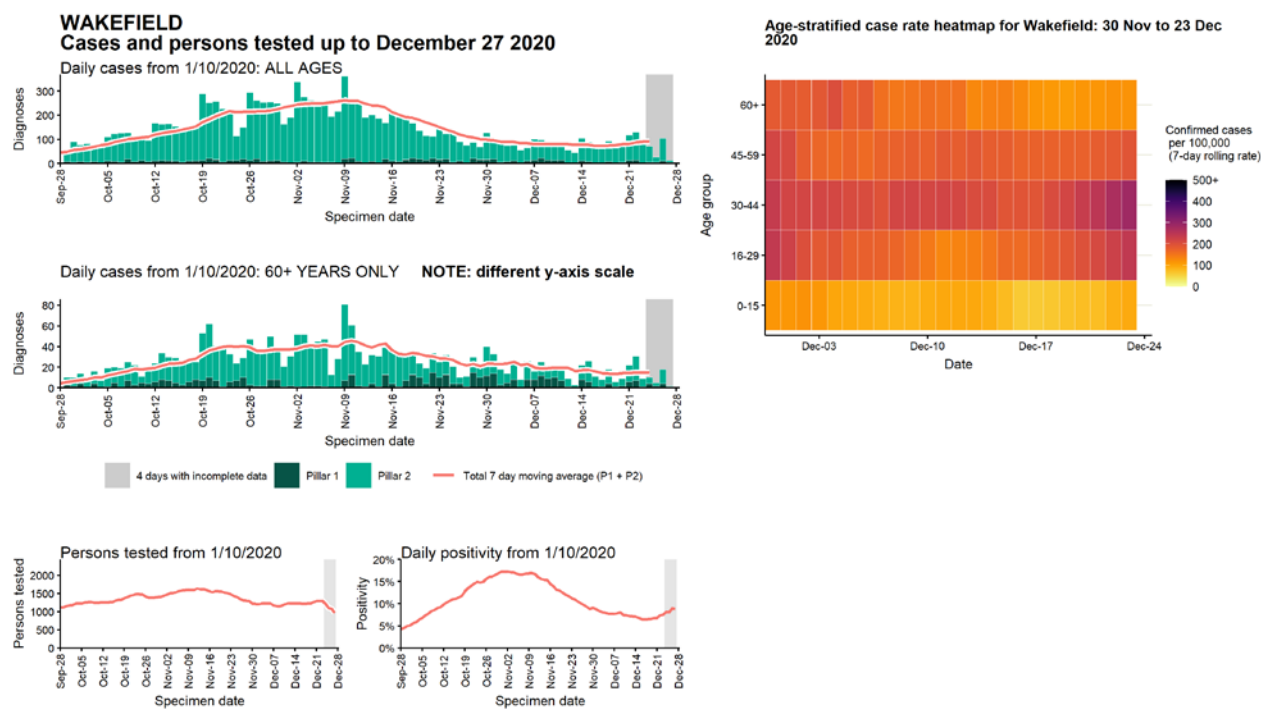
Data from SGSS. Produced by Outbreak Surveillance Team, PHE

Case numbers, testing numbers and positivity, Sheffield : 01 Sep to 27 Dec 2020



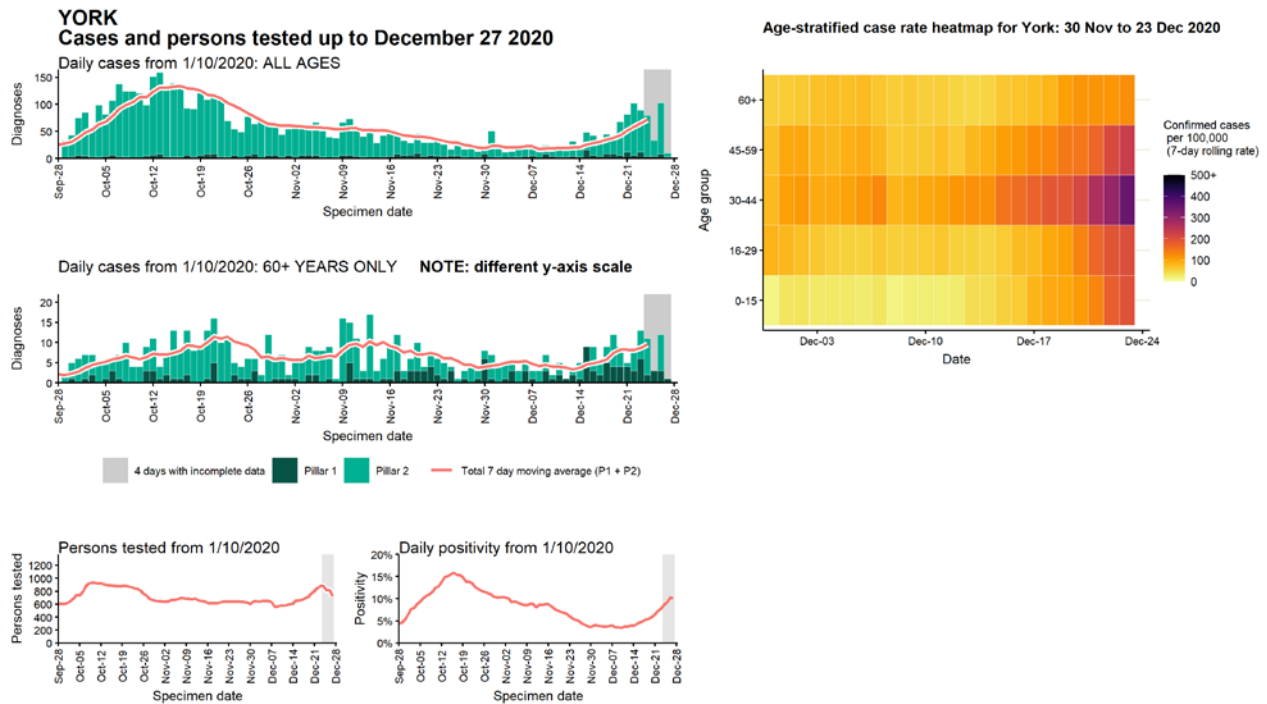
Data from SGSS. Produced by Outbreak Surveillance Team, PHE

Case numbers, testing numbers and positivity, Wakefield : 01 Sep to 27 Dec 2020



Data from SGSS. Produced by Outbreak Surveillance Team, PHE

Case numbers, testing numbers and positivity, York : 01 Sep to 27 Dec 2020



Data from SGSS. Produced by Outbreak Surveillance Team, PHE

© Crown copyright 2020

www.gov.uk/dhsc

This publication is licensed under the terms of the Open Government Licence v3.0 except where otherwise stated. To view this licence, visit nationalarchives.gov.uk/doc/open-government-licence/version/3

Where we have identified any third party copyright information you will need to obtain permission from the copyright holders concerned.

