



Department
of Health &
Social Care

South West: lower tier local authority watchlist – epidemiological charts

Produced 28 December 2020

NOTES

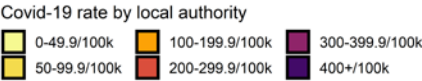
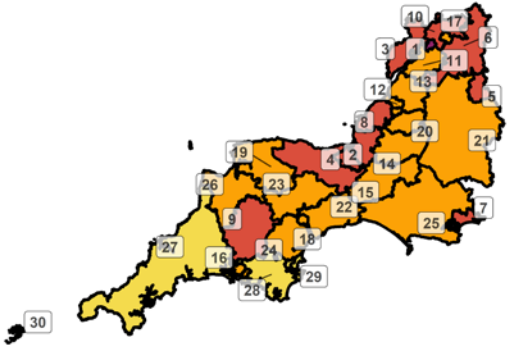
- This data is provided by Public Health England for the purpose of monitoring and supporting the management of Covid-19 infections in Local Authorities.
- The reports are produced using 2019 ONS population data
- If you would like to know the weekly trend for the case rate charts and persons tested chart please see Lower-tier local authority watchlist.

Weekly case rate per 100,000 population by local authority: 17 Dec to 23 Dec 2020

Rank	Local Authority	Case Rate (per 100,000)	Number of cases (1 week)
1	Gloucester	303.6	392
2	Sedgemoor	275.2	339
3	Forest of Dean	251.2	218
4	Somerset West and Taunton	248.2	385
5	Swindon	242.1	538
6	Cotswold	222.6	200
7	Bournemouth, Christchurch and Poole	218.8	865
8	North Somerset	210.2	452
9	West Devon	204.3	114
10	Tewkesbury	204.2	194
11	Stroud	198.4	238
12	Bristol, City of	193.4	896
13	South Gloucestershire	192.2	548
14	Mendip	192.1	222
15	South Somerset	183.0	308

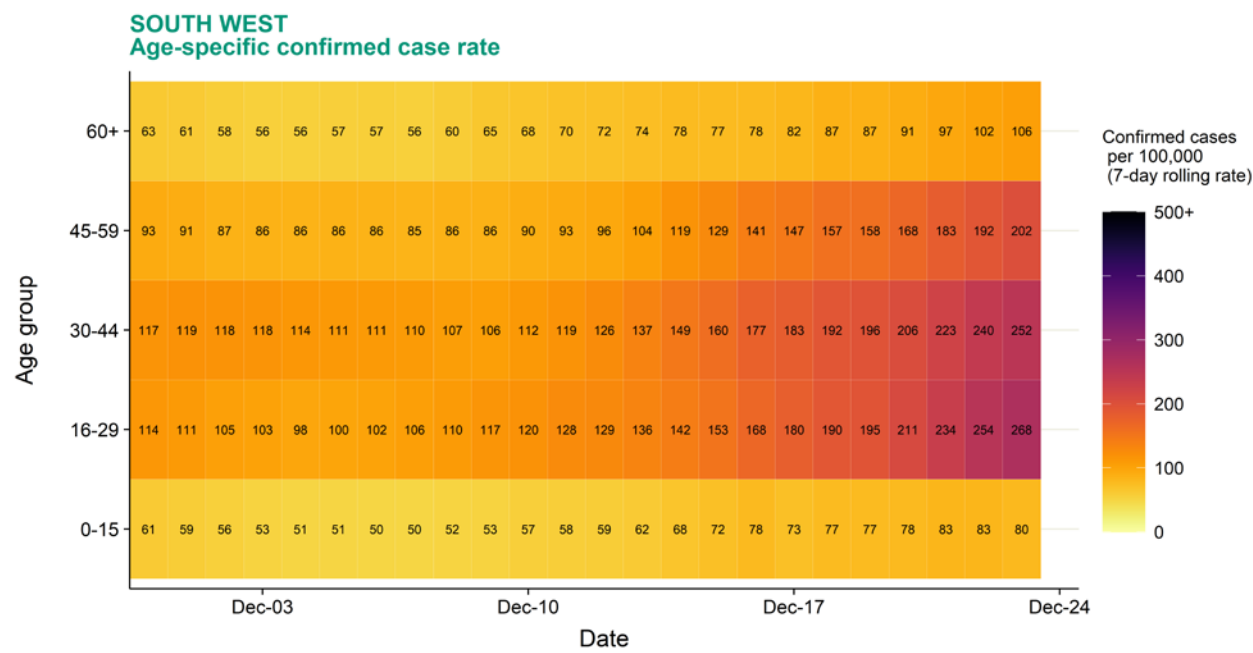
Rank	Local Authority	Case Rate (per 100,000)	Number of cases (1 week)
16	Plymouth	178.9	469
17	Cheltenham	175.4	204
18	Exeter	165.1	217
19	North Devon	164.7	160
20	Bath and North East Somerset	158.3	306
21	Wiltshire	155.4	777
22	East Devon	151.1	221
23	Mid Devon	148.2	122
24	Teignbridge	132.7	178
25	Dorset	120.2	455
26	Torridge	104.0	71
27	Cornwall	96.6	550
28	South Hams	95.4	83
29	Torbay	71.9	98
30	Isles of Scilly	0.0	0

South West
COVID-19 cases: 17 Dec to 23 Dec 2020
Weekly case rates per 100,000 population by local authority



Data from SGSS; Pillar 1 and 2 testing. Figure by Outbreak Surveillance Team, Public Health England.
Contains National Statistics data including 2019 population estimates Â© Crown copyright and database right 2020

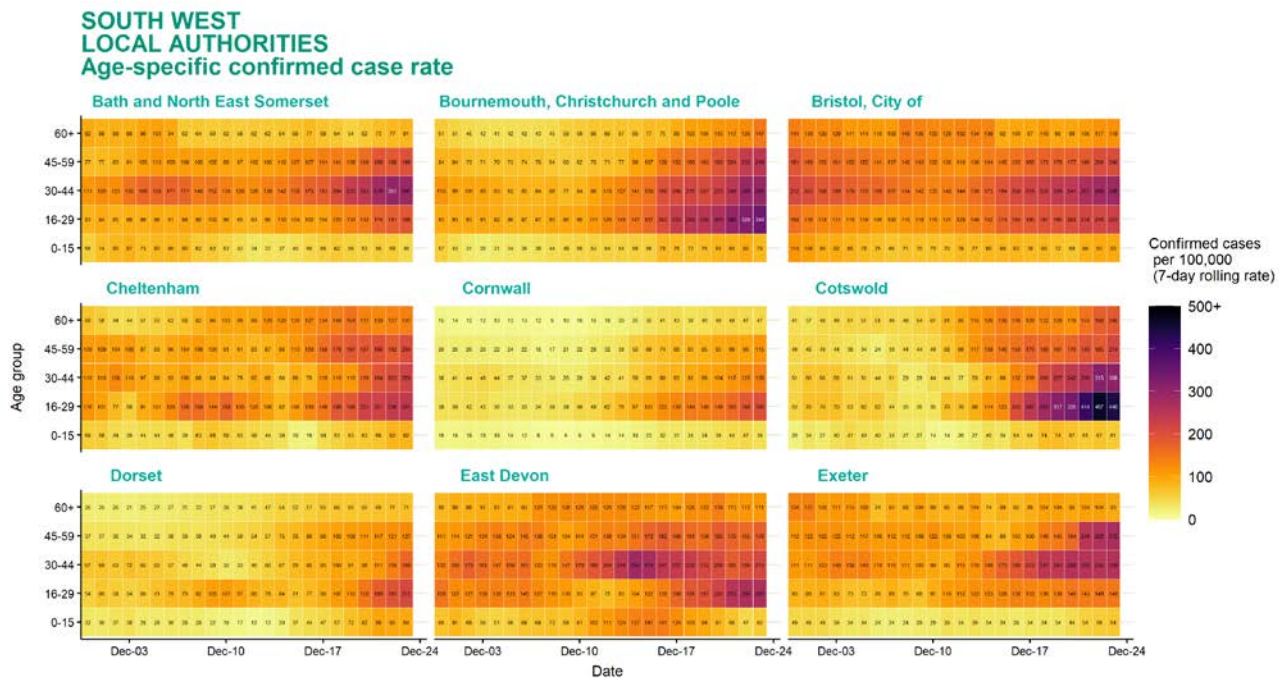
Age-stratified heatmap of weekly case rate for South West : 30 Nov to 23 Dec 2020



Source: Case data from SGSS. Produced by Outbreak Surveillance Team, PHE

Contains National Statistics data Â© Crown copyright and database right 2020

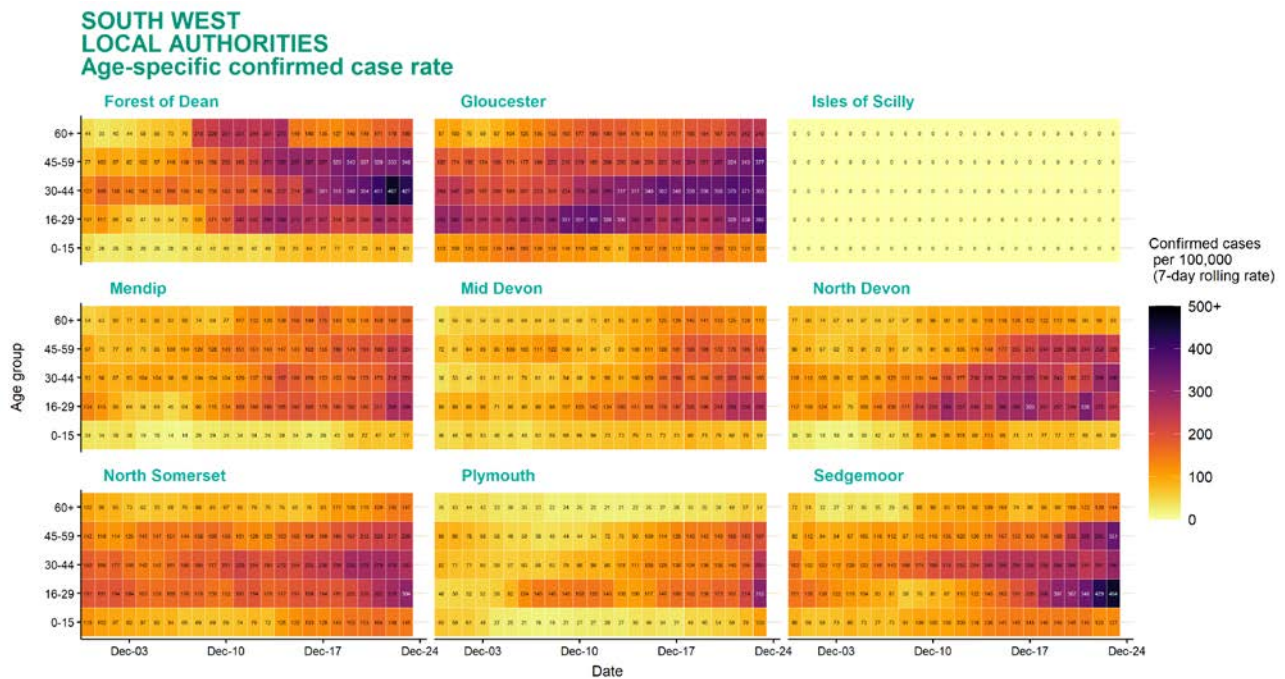
Age-stratified heatmap of weekly case rate by local authority for South West : 30 Nov to 23 Dec 2020



Source: Case data from SGSS. Produced by Outbreak Surveillance Team, PHE

Contains National Statistics data Â© Crown copyright and database right 2020

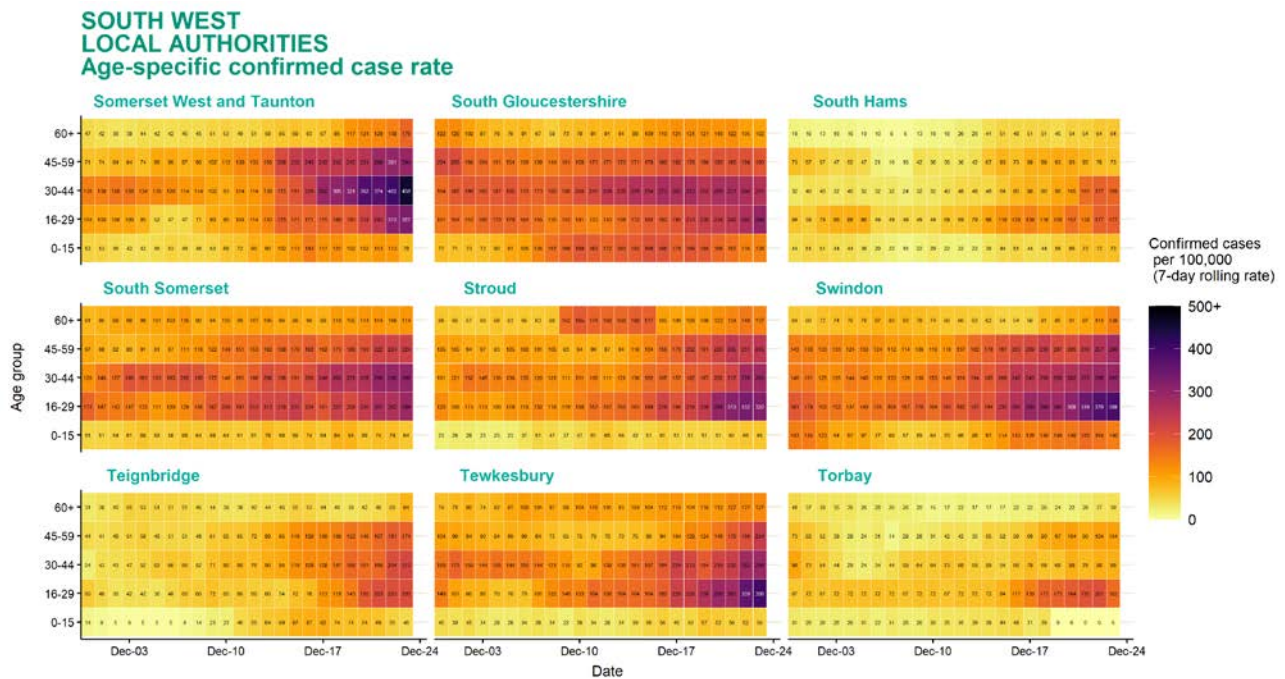
Age-stratified heatmap of weekly case rate by local authority for South West : 30 Nov to 23 Dec 2020



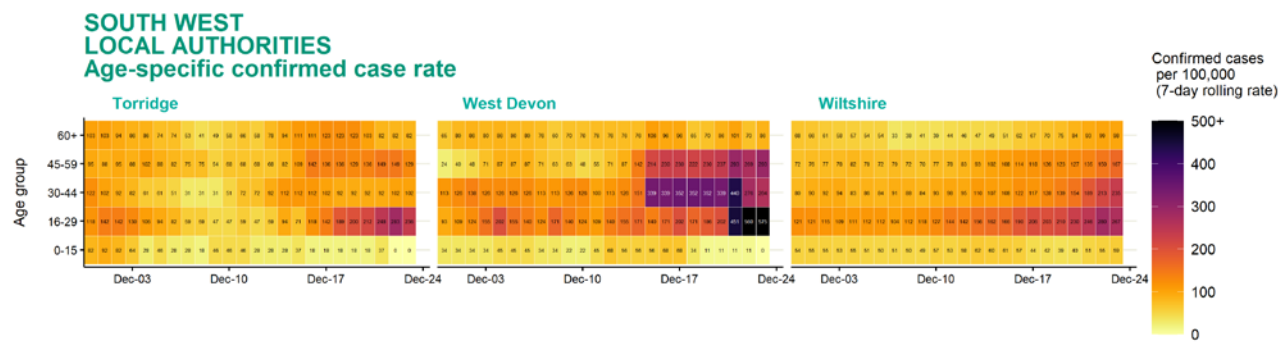
Source: Case data from SGSS. Produced by Outbreak Surveillance Team, PHE

Contains National Statistics data Â© Crown copyright and database right 2020

Age-stratified heatmap of weekly case rate by local authority for South West : 30 Nov to 23 Dec 2020



Age-stratified heatmap of weekly case rate by local authority for South West : 30 Nov to 23 Dec 2020

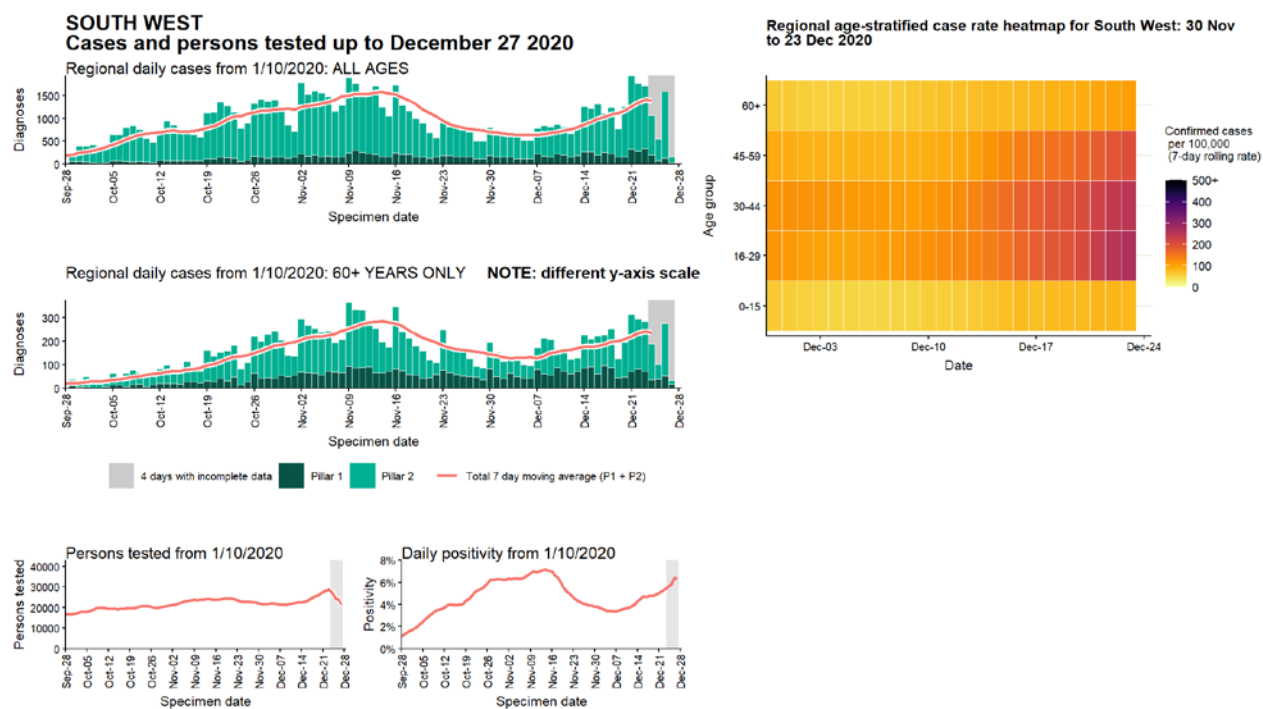


Date

Source: Case data from SGSS. Produced by Outbreak Surveillance Team, PHE

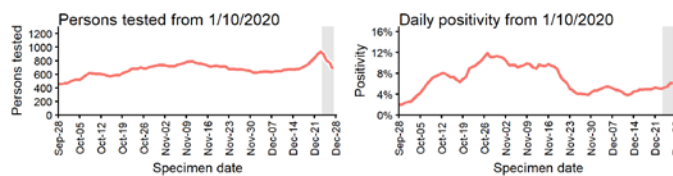
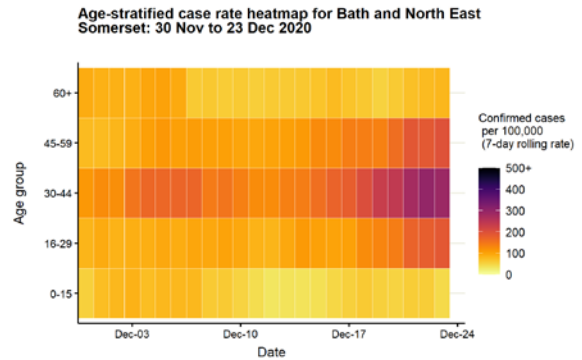
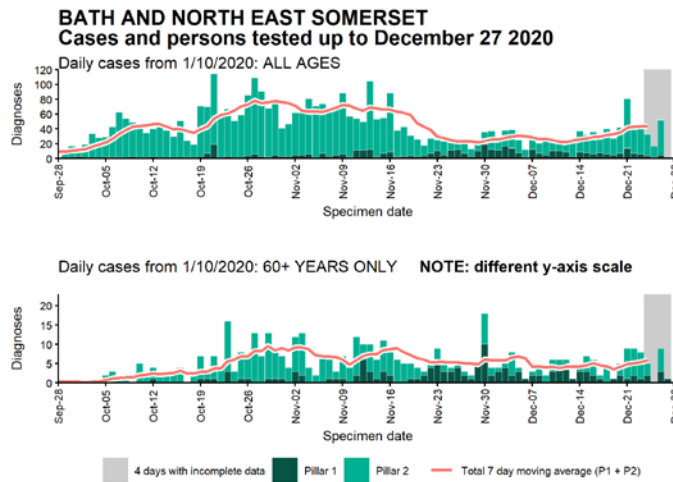
Contains National Statistics data Â© Crown copyright and database right 2020

Regional case numbers, testing numbers and positivity, South West :
01 Sep to 27 Dec 2020



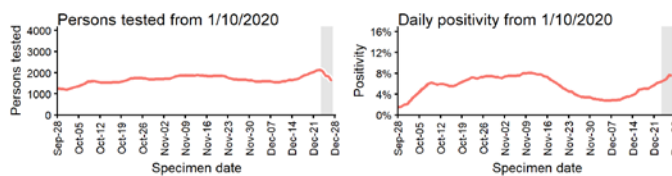
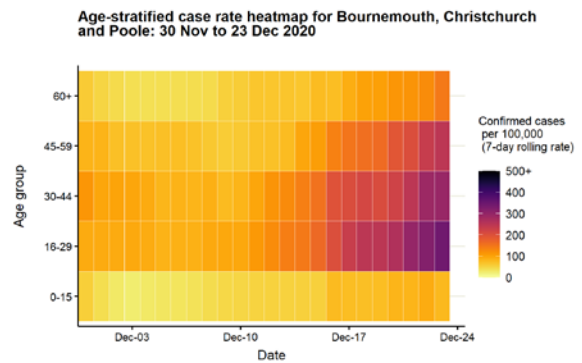
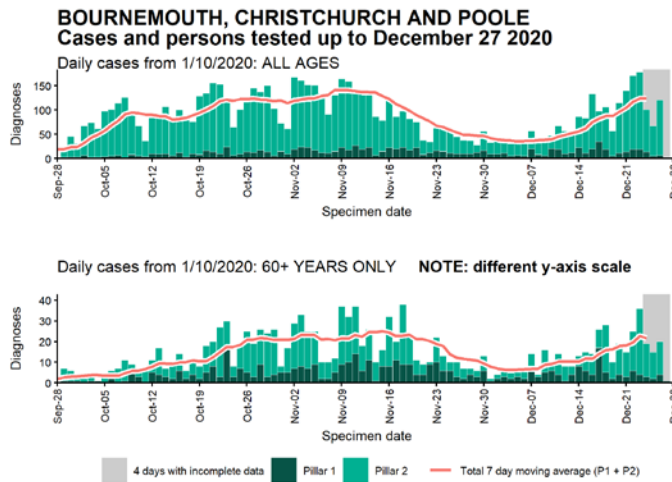
Data from SGSS. Produced by Outbreak Surveillance Team, PHE

Case numbers, testing numbers and positivity, Bath and North East Somerset : 01 Sep to 27 Dec 2020



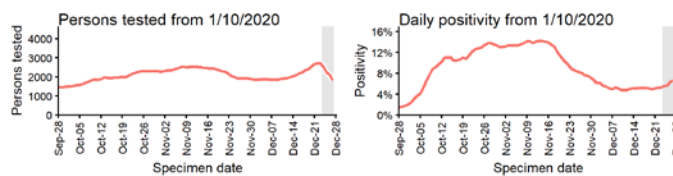
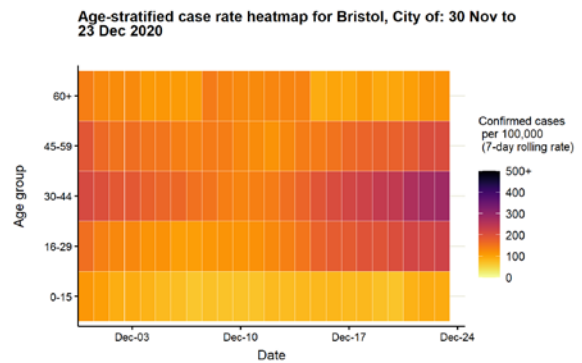
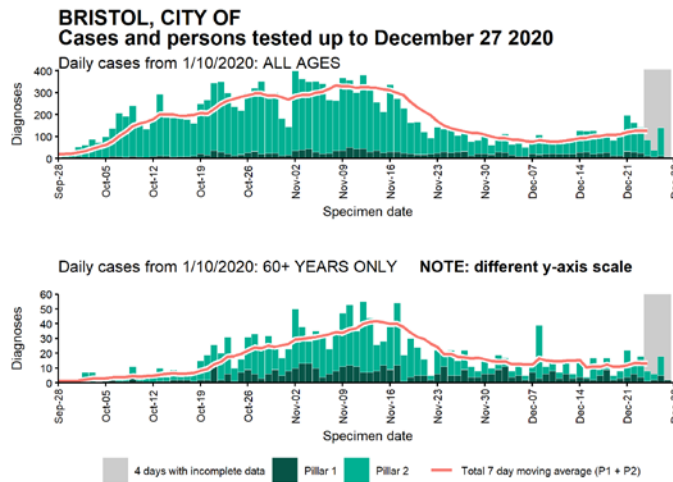
Data from SGSS. Produced by Outbreak Surveillance Team, PHE

Case numbers, testing numbers and positivity, Bournemouth, Christchurch and Poole : 01 Sep to 27 Dec 2020



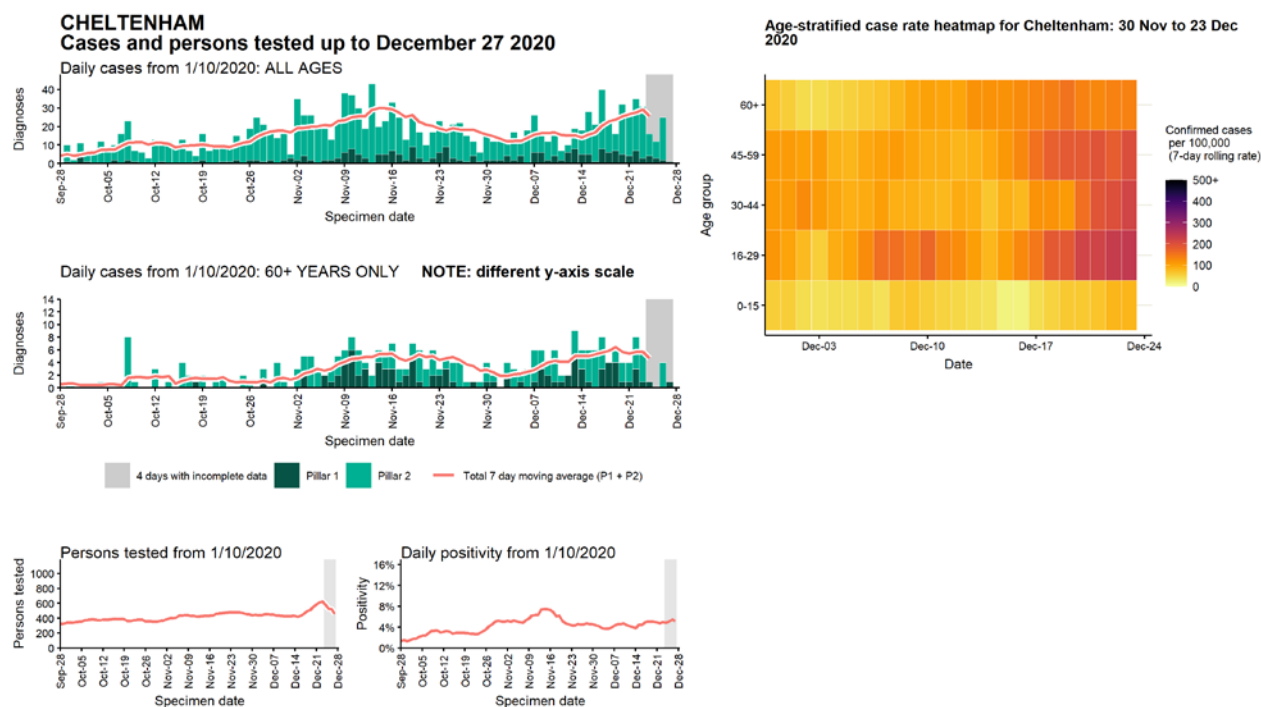
Data from SGSS. Produced by Outbreak Surveillance Team, PHE

Case numbers, testing numbers and positivity, Bristol, City of : 01 Sep to 27 Dec 2020



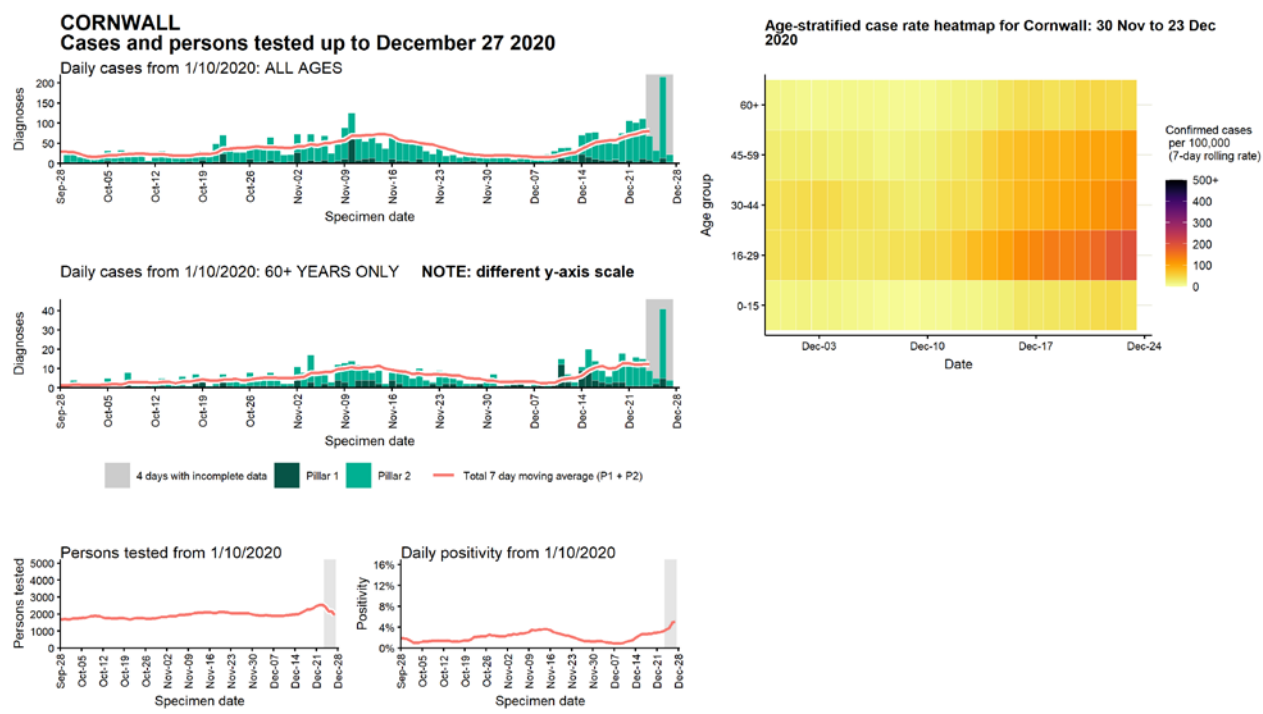
Data from SGSS. Produced by Outbreak Surveillance Team, PHE

Case numbers, testing numbers and positivity, Cheltenham : 01 Sep to 27 Dec 2020



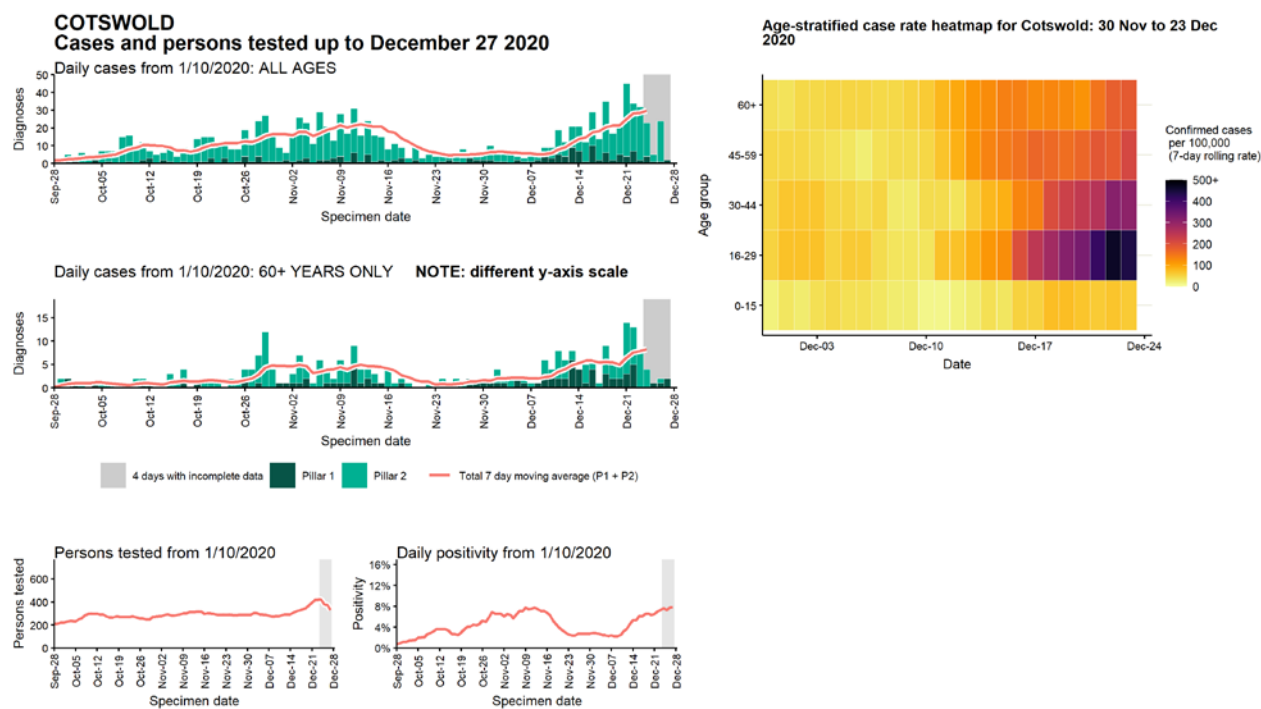
Data from SGSS. Produced by Outbreak Surveillance Team, PHE

Case numbers, testing numbers and positivity, Cornwall : 01 Sep to 27 Dec 2020

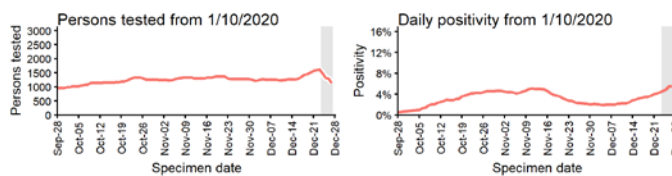
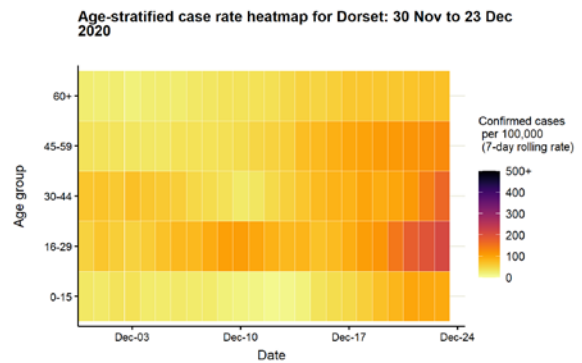
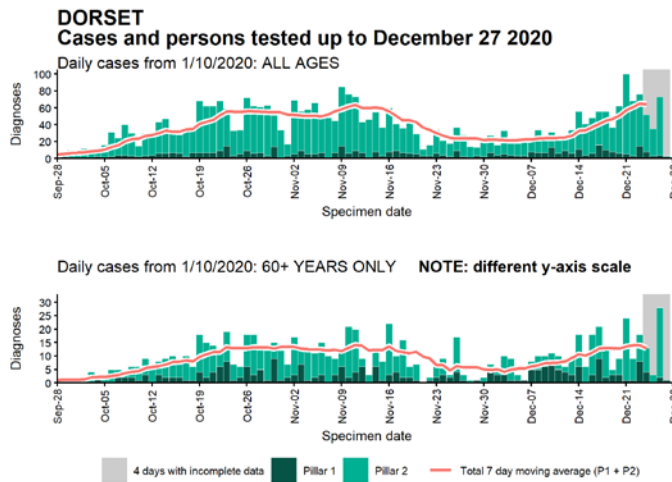


Data from SGSS. Produced by Outbreak Surveillance Team, PHE

Case numbers, testing numbers and positivity, Cotswold : 01 Sep to 27 Dec 2020

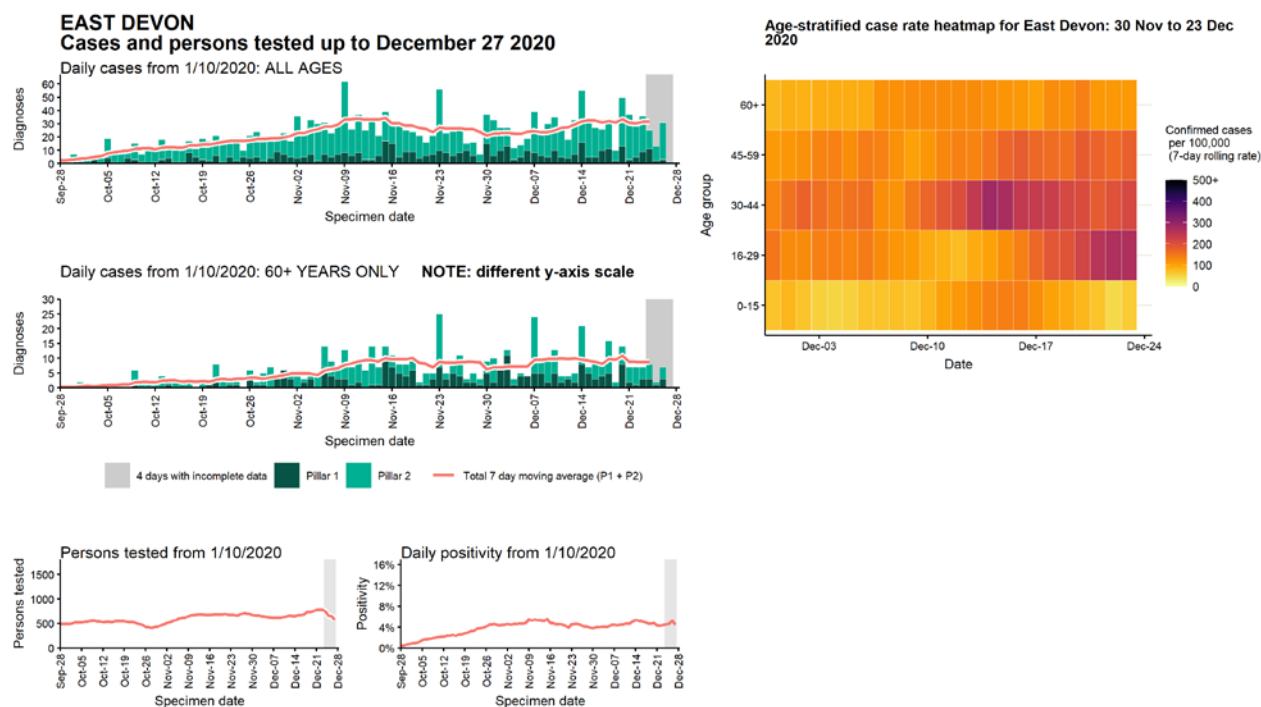


Case numbers, testing numbers and positivity, Dorset : 01 Sep to 27 Dec 2020



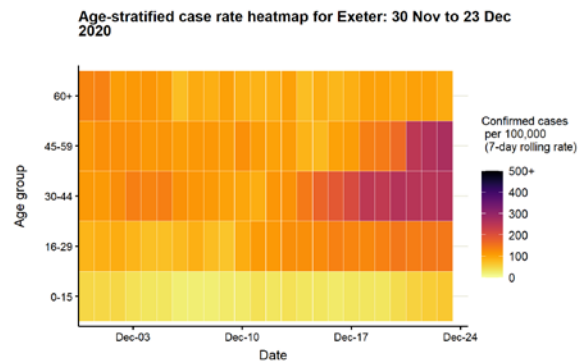
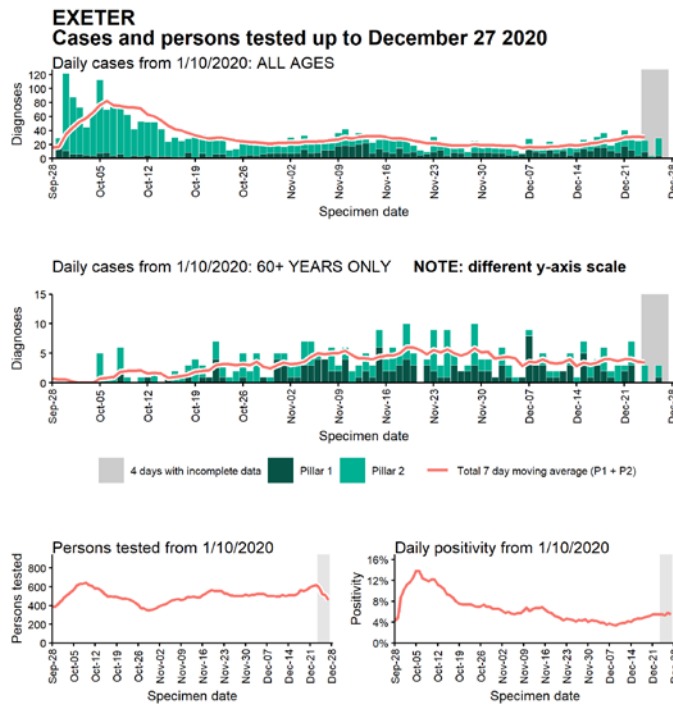
Data from SGSS. Produced by Outbreak Surveillance Team, PHE

Case numbers, testing numbers and positivity, East Devon : 01 Sep to 27 Dec 2020



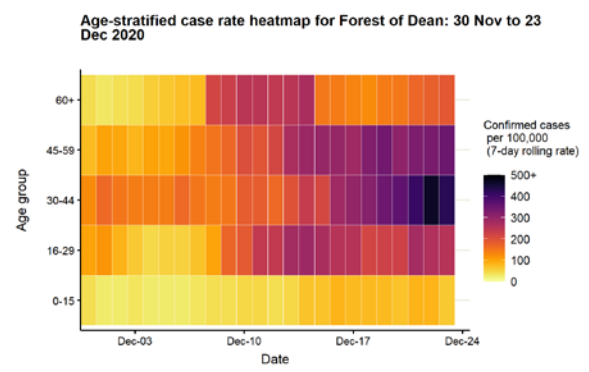
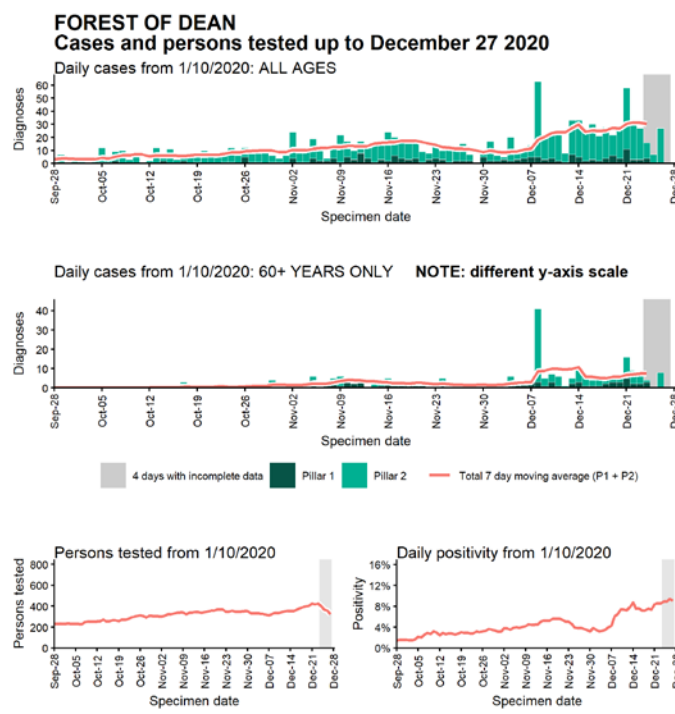
Data from SGSS. Produced by Outbreak Surveillance Team, PHE

Case numbers, testing numbers and positivity, Exeter : 01 Sep to 27 Dec 2020



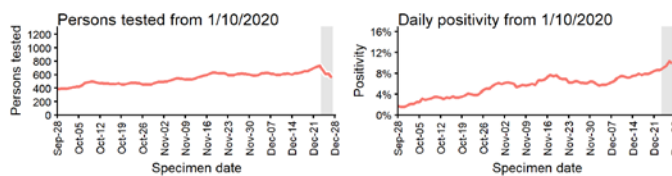
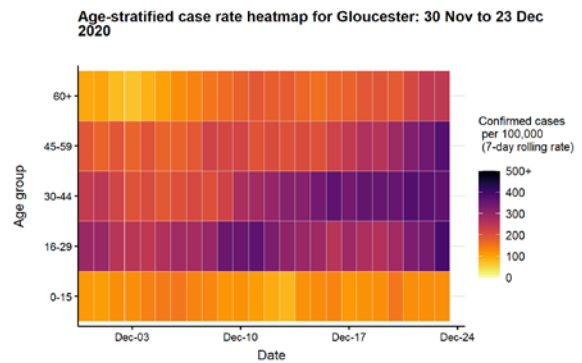
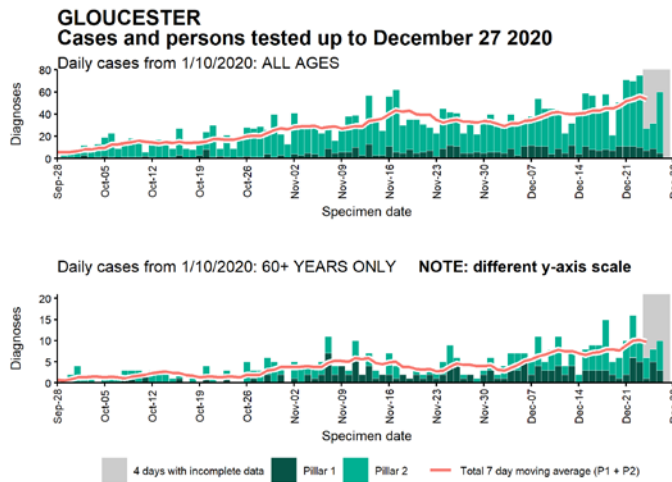
Data from SGSS. Produced by Outbreak Surveillance Team, PHE

Case numbers, testing numbers and positivity, Forest of Dean : 01 Sep to 27 Dec 2020



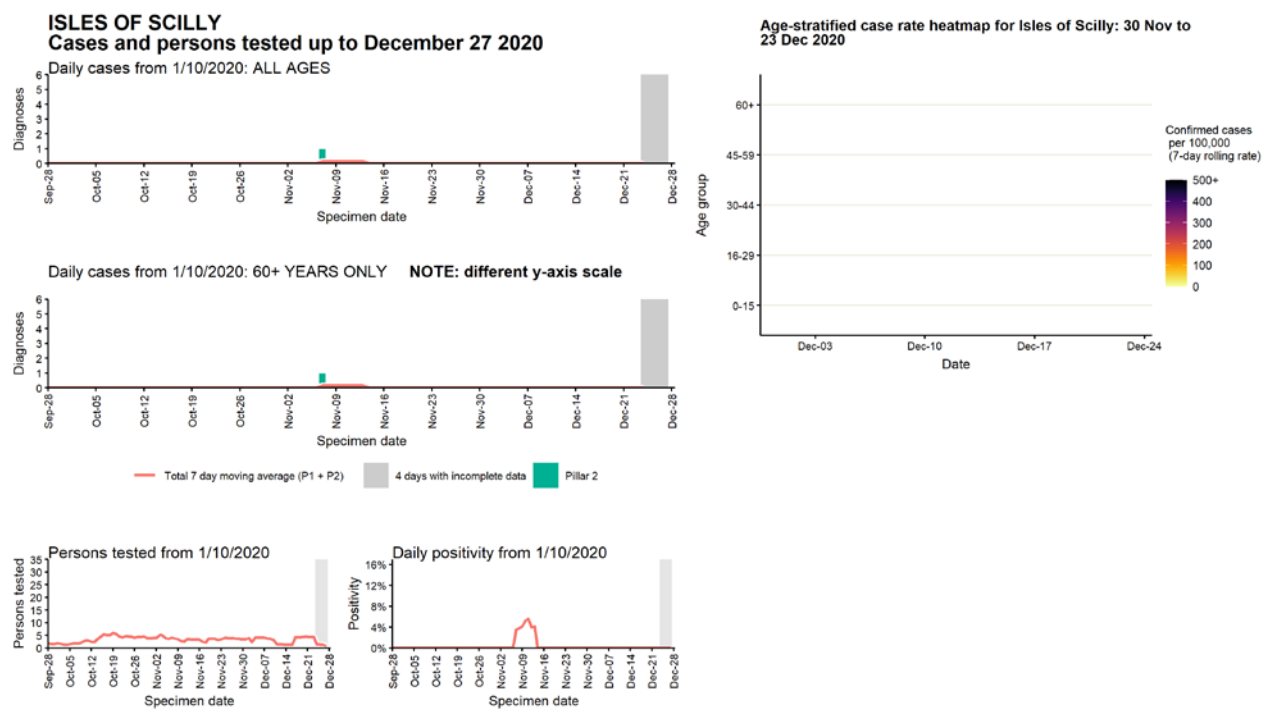
Data from SGSS. Produced by Outbreak Surveillance Team, PHE

Case numbers, testing numbers and positivity, Gloucester : 01 Sep to 27 Dec 2020



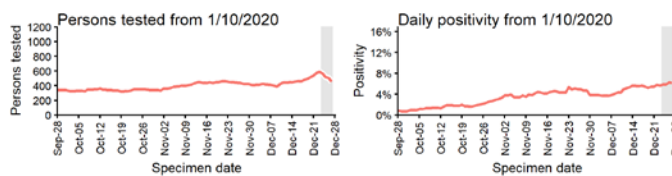
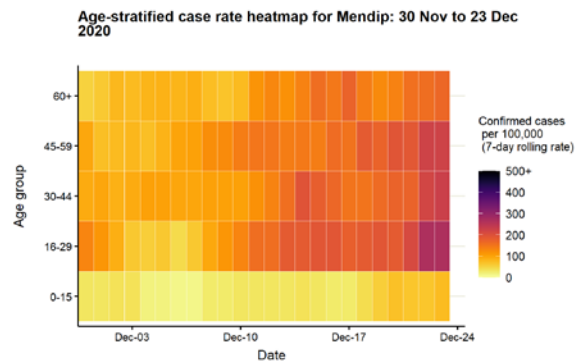
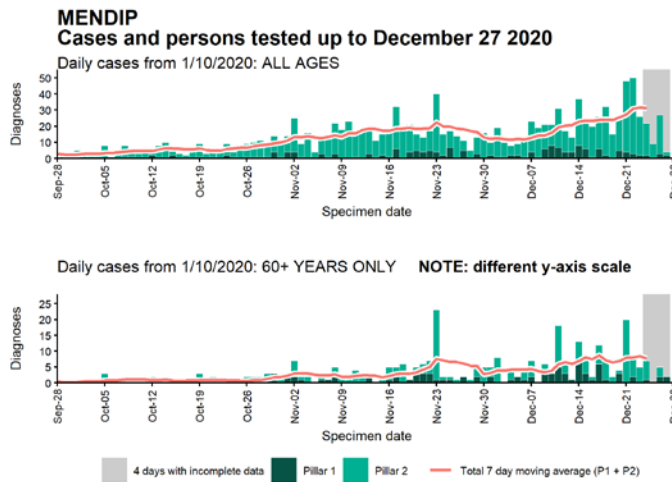
Data from SGSS. Produced by Outbreak Surveillance Team, PHE

Case numbers, testing numbers and positivity, Isles of Scilly : 01 Sep to 27 Dec 2020



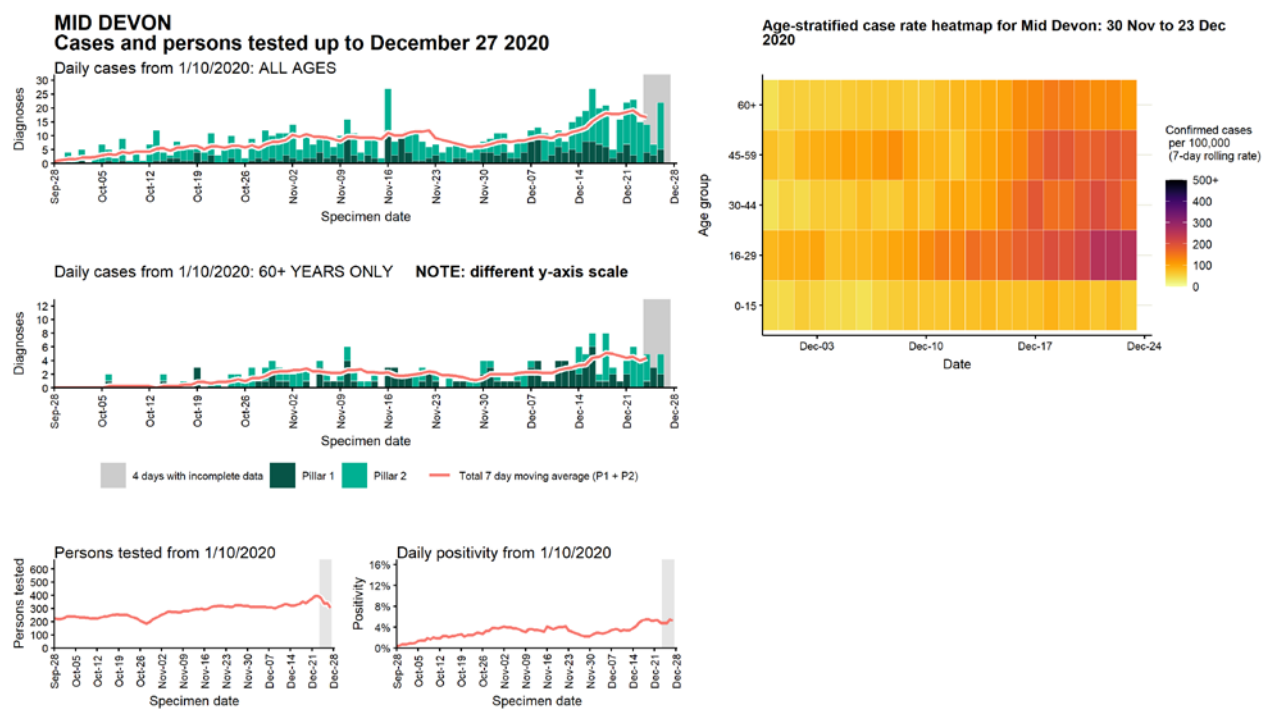
Data from SGSS. Produced by Outbreak Surveillance Team, PHE

Case numbers, testing numbers and positivity, Mendip : 01 Sep to 27 Dec 2020



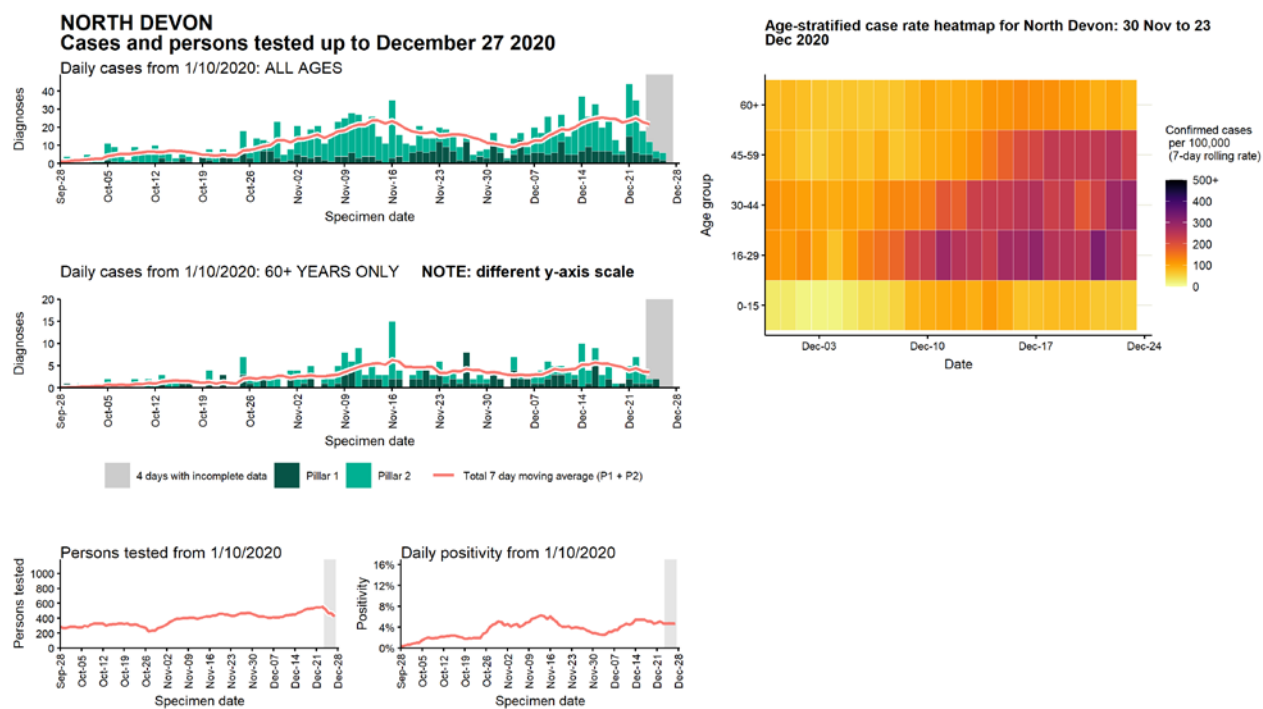
Data from SGSS. Produced by Outbreak Surveillance Team, PHE

Case numbers, testing numbers and positivity, Mid Devon : 01 Sep to 27 Dec 2020



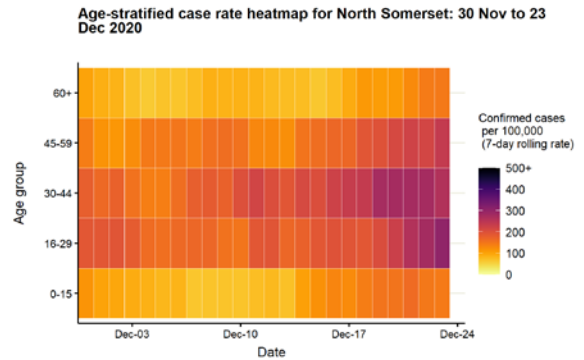
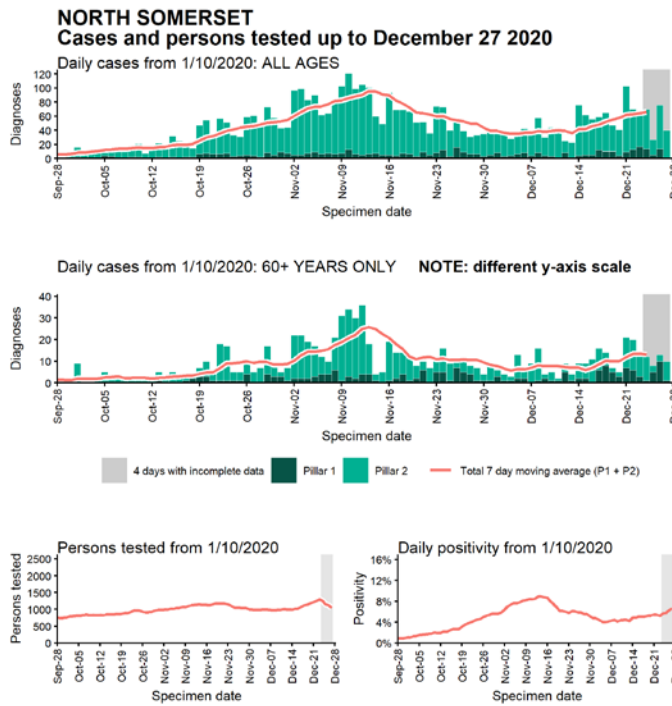
Data from SGSS. Produced by Outbreak Surveillance Team, PHE

Case numbers, testing numbers and positivity, North Devon : 01 Sep to 27 Dec 2020



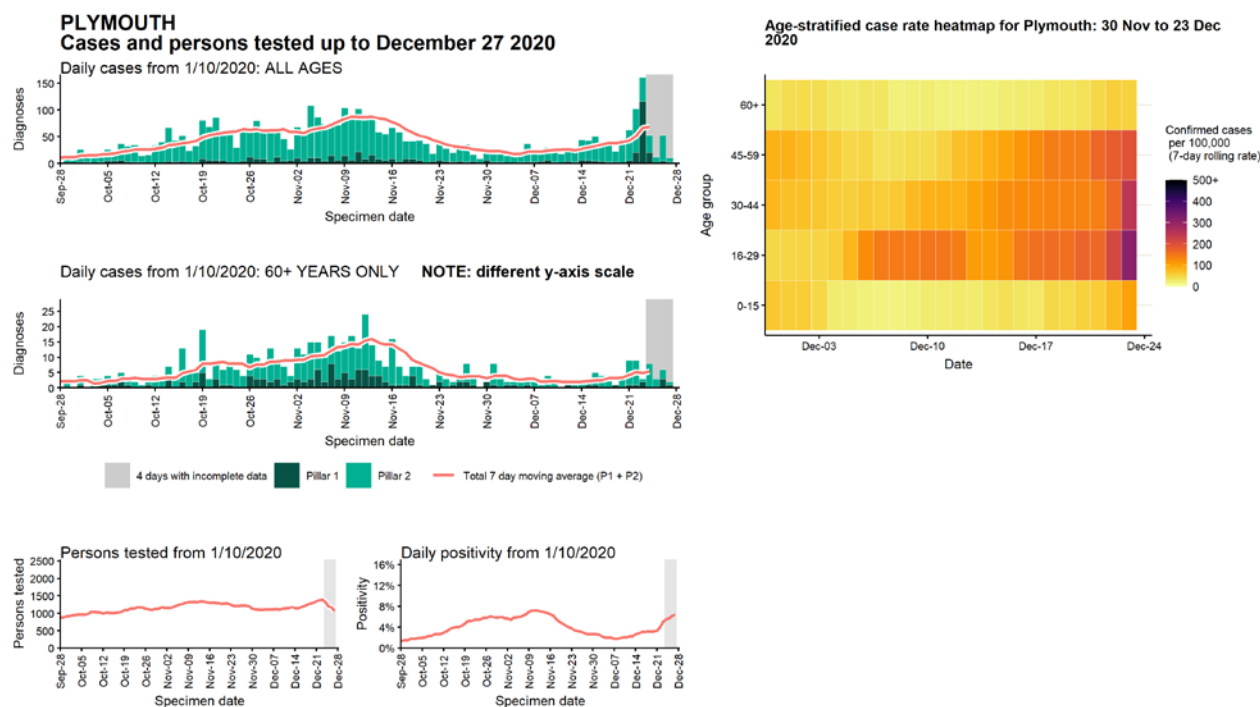
Data from SGSS. Produced by Outbreak Surveillance Team, PHE

Case numbers, testing numbers and positivity, North Somerset : 01 Sep to 27 Dec 2020



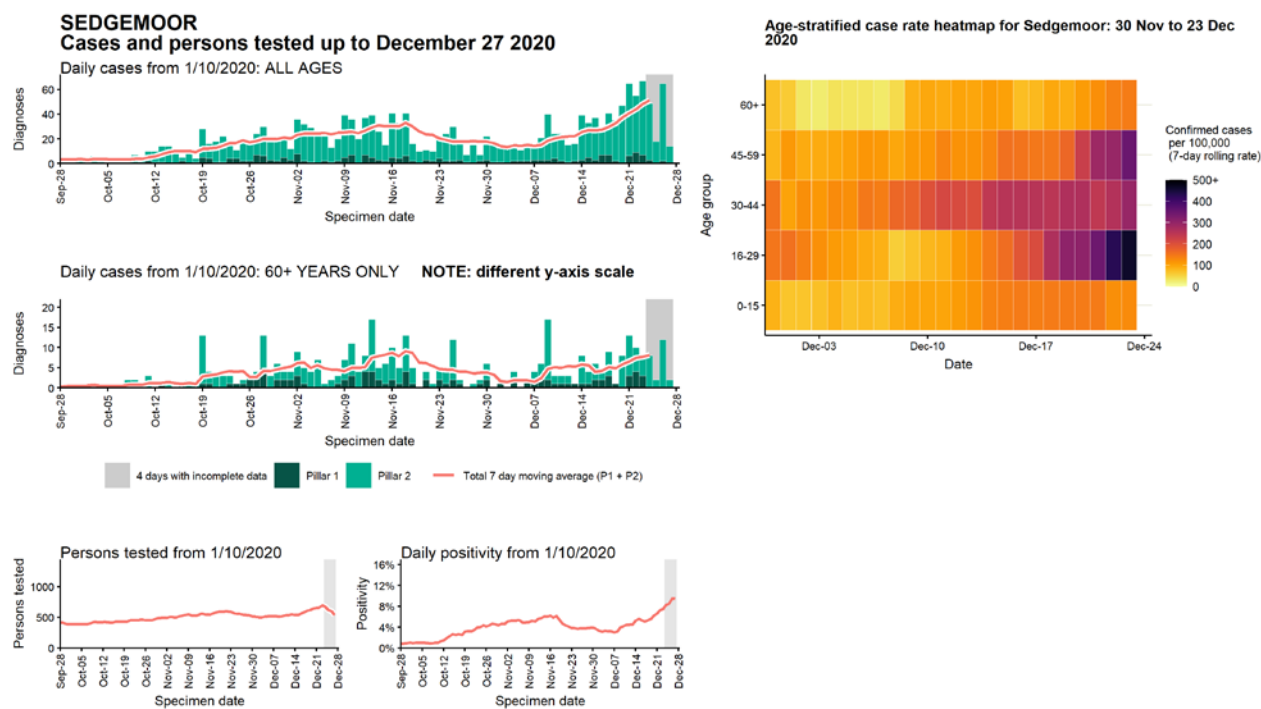
Data from SGSS. Produced by Outbreak Surveillance Team, PHE

Case numbers, testing numbers and positivity, Plymouth : 01 Sep to 27 Dec 2020



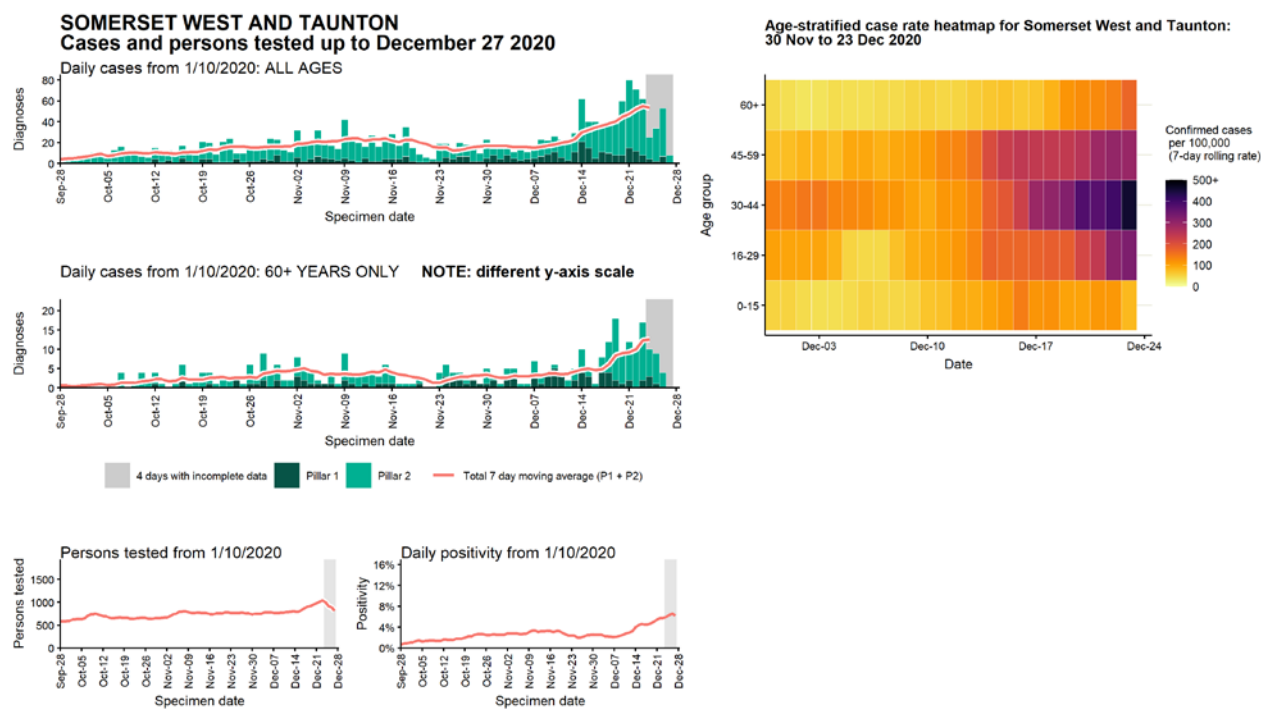
Data from SGSS. Produced by Outbreak Surveillance Team, PHE

Case numbers, testing numbers and positivity, Sedgemoor : 01 Sep to 27 Dec 2020



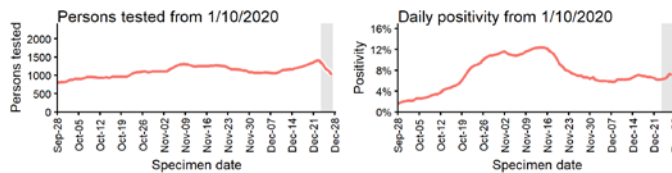
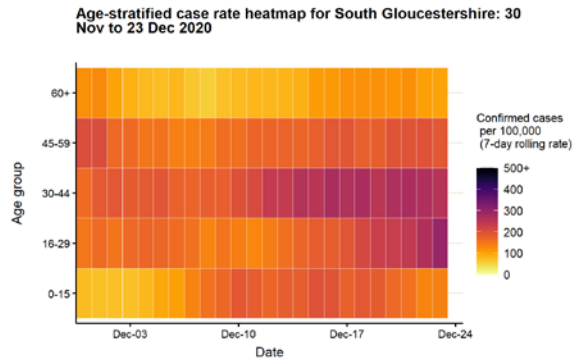
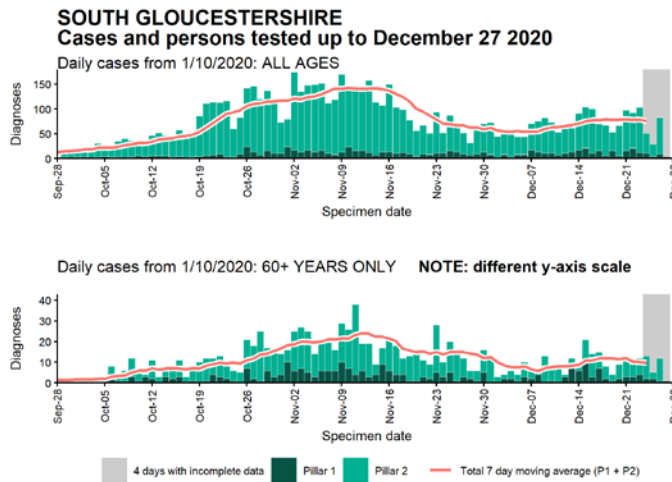
Data from SGSS. Produced by Outbreak Surveillance Team, PHE

Case numbers, testing numbers and positivity, Somerset West and Taunton : 01 Sep to 27 Dec 2020



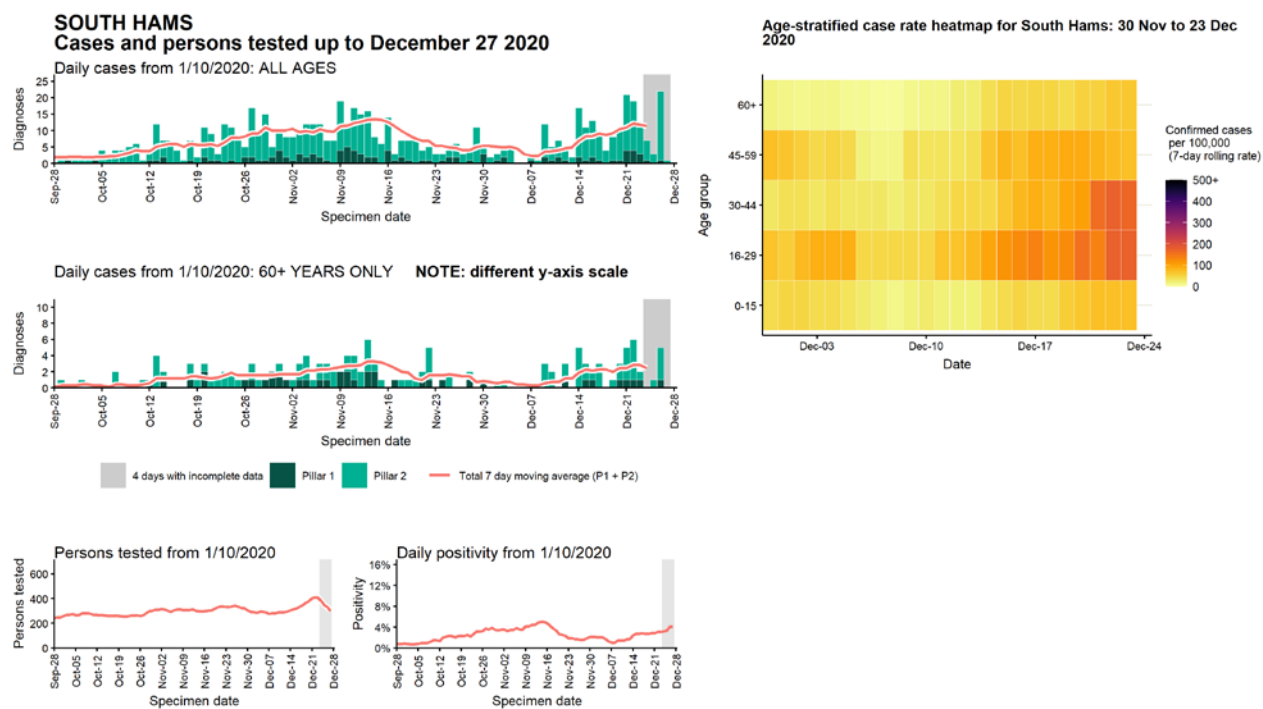
Data from SGSS. Produced by Outbreak Surveillance Team, PHE

Case numbers, testing numbers and positivity, South Gloucestershire : 01 Sep to 27 Dec 2020



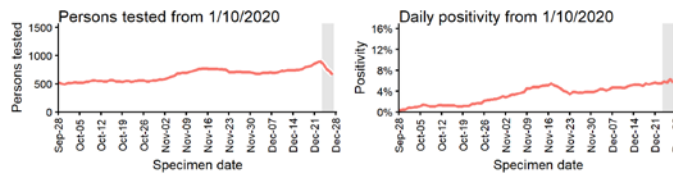
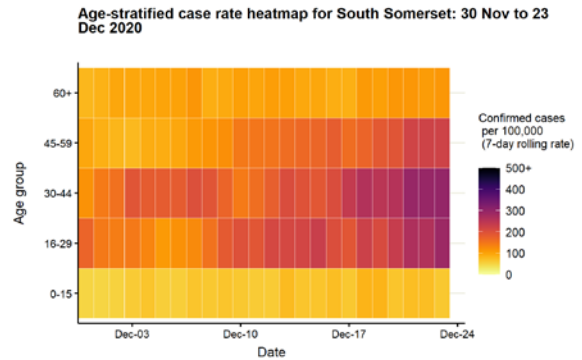
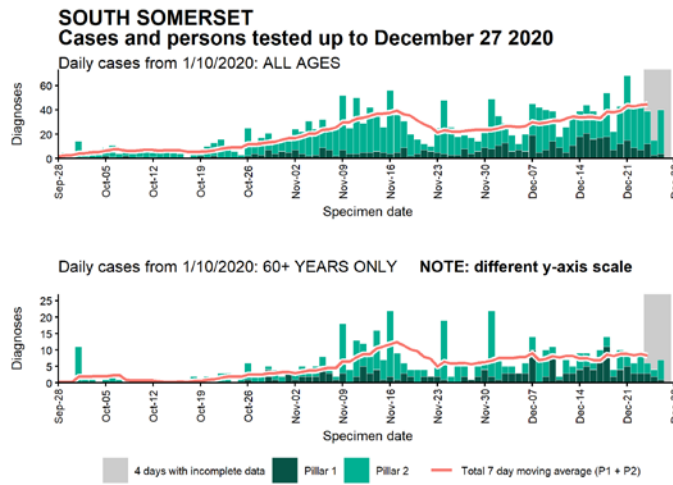
Data from SGSS. Produced by Outbreak Surveillance Team, PHE

Case numbers, testing numbers and positivity, South Hams : 01 Sep to 27 Dec 2020



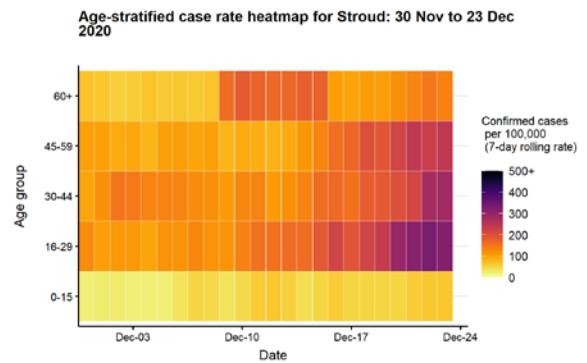
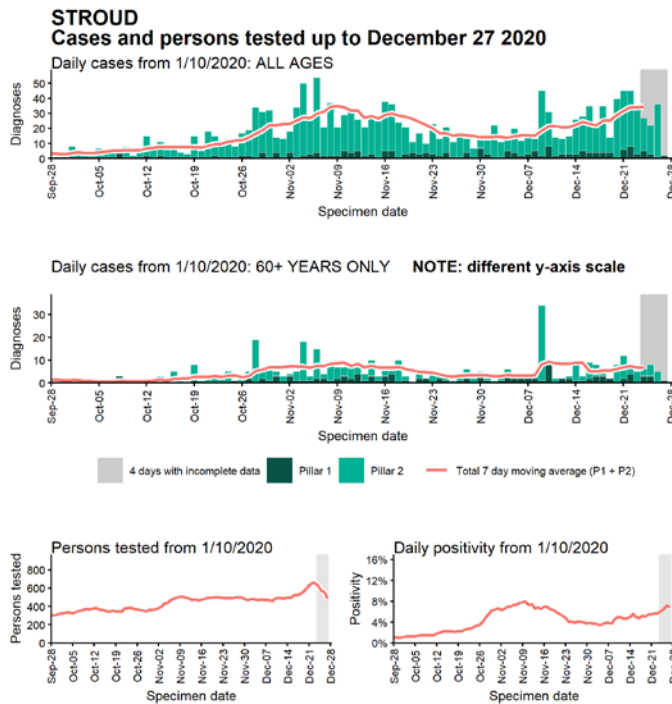
Data from SGSS. Produced by Outbreak Surveillance Team, PHE

Case numbers, testing numbers and positivity, South Somerset : 01 Sep to 27 Dec 2020



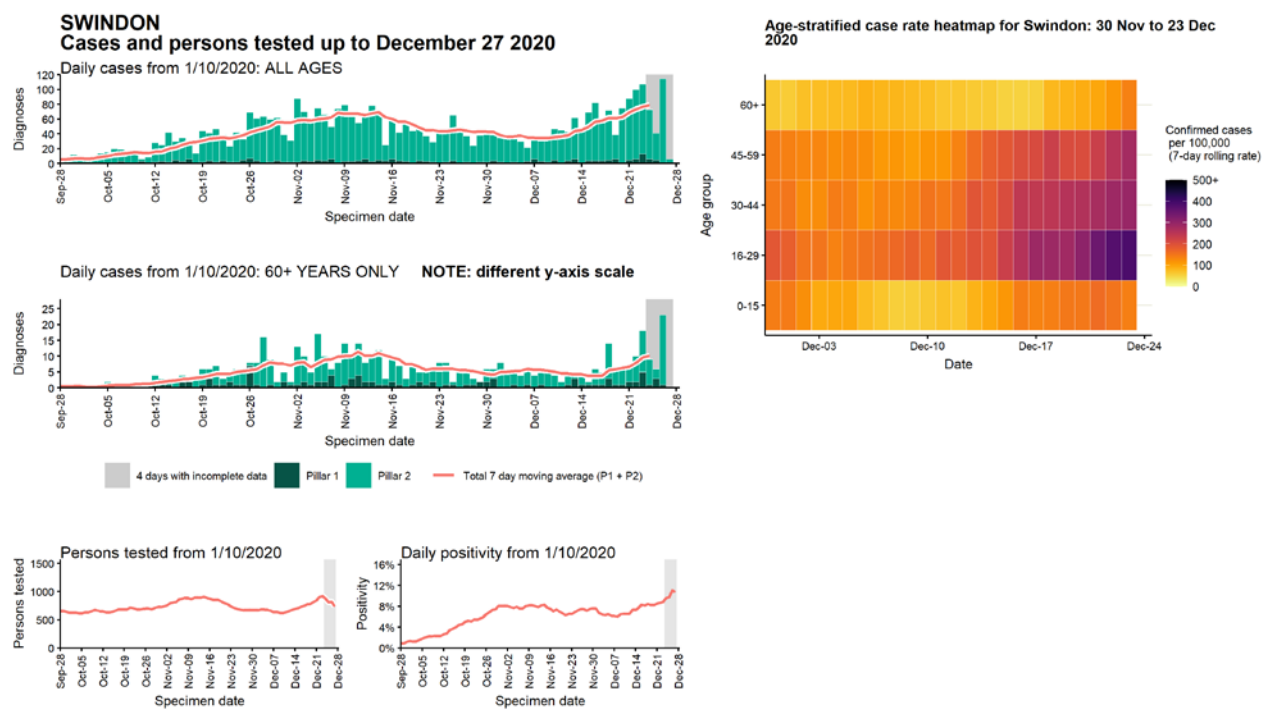
Data from SGSS. Produced by Outbreak Surveillance Team, PHE

Case numbers, testing numbers and positivity, Stroud : 01 Sep to 27 Dec 2020



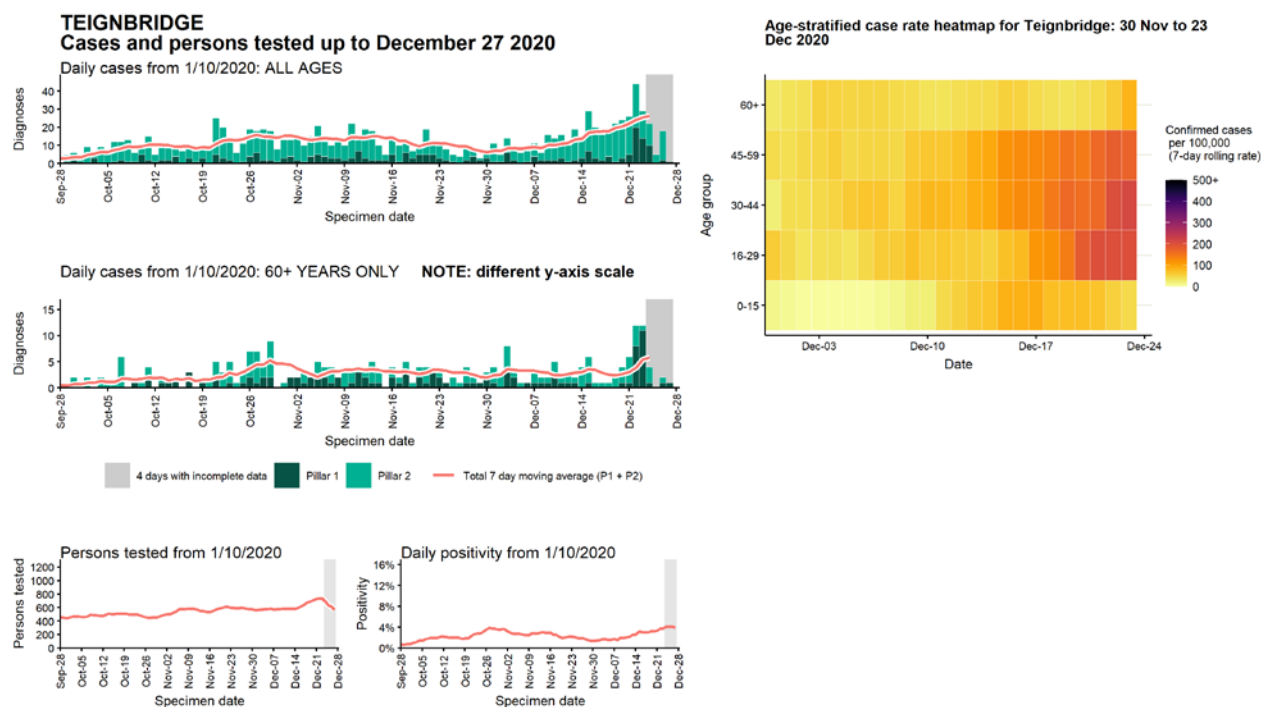
Data from SGSS. Produced by Outbreak Surveillance Team, PHE

Case numbers, testing numbers and positivity, Swindon : 01 Sep to 27 Dec 2020



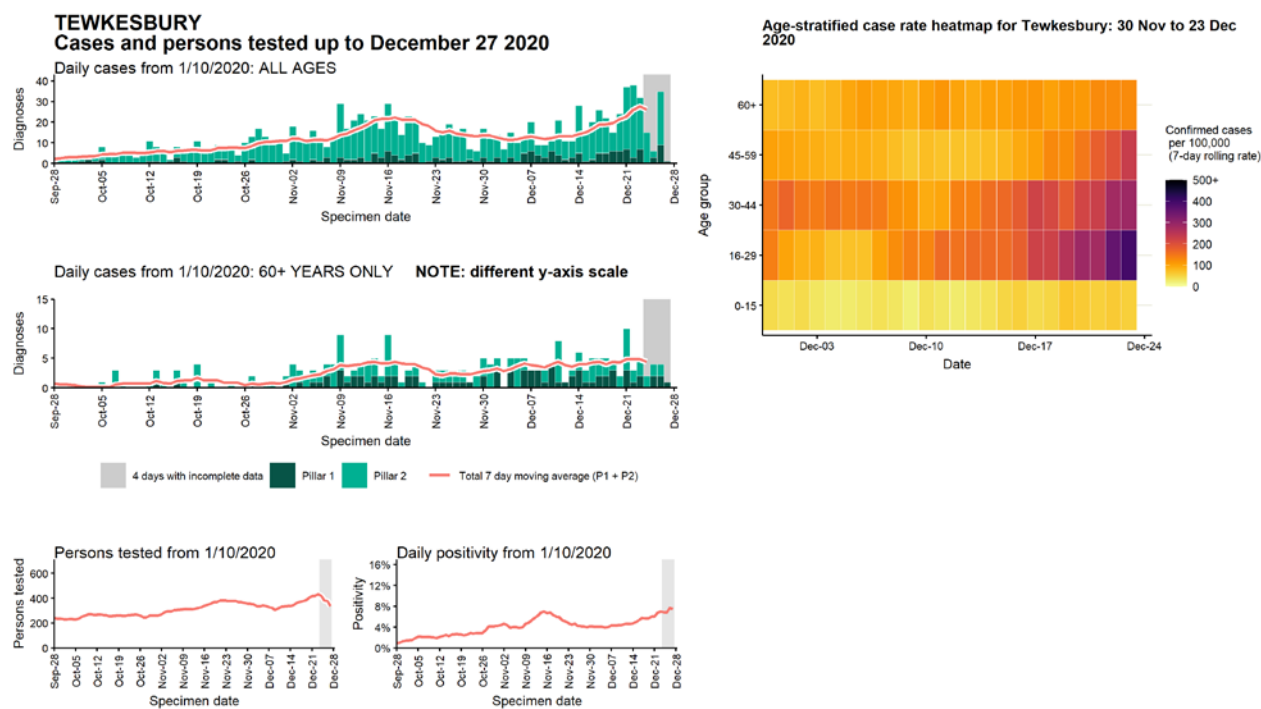
Data from SGSS. Produced by Outbreak Surveillance Team, PHE

Case numbers, testing numbers and positivity, Teignbridge : 01 Sep to 27 Dec 2020



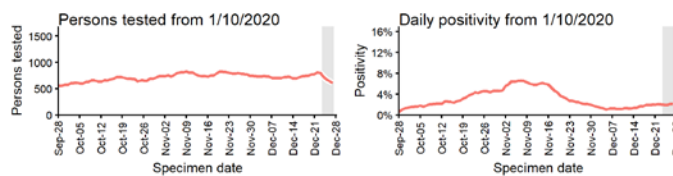
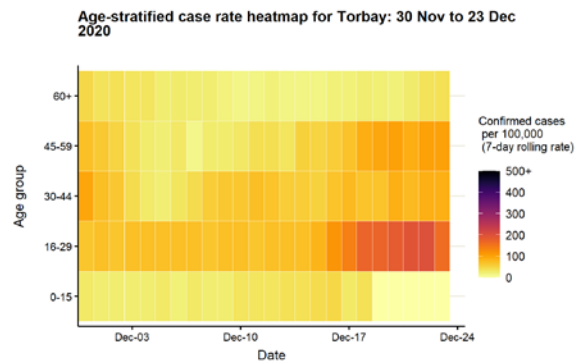
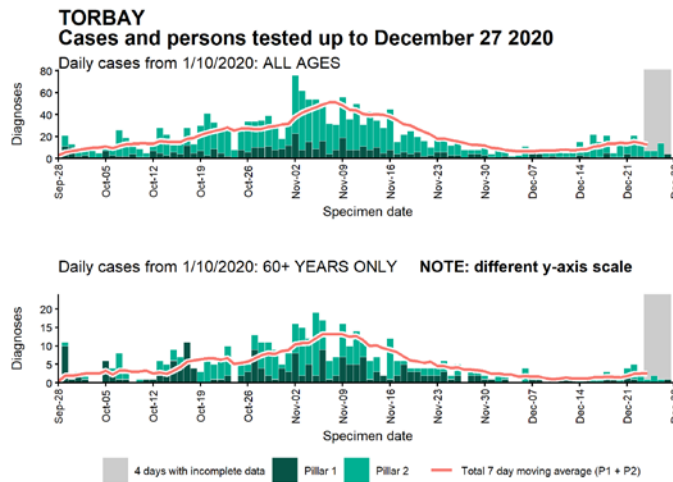
Data from SGSS. Produced by Outbreak Surveillance Team, PHE

Case numbers, testing numbers and positivity, Tewkesbury : 01 Sep to 27 Dec 2020



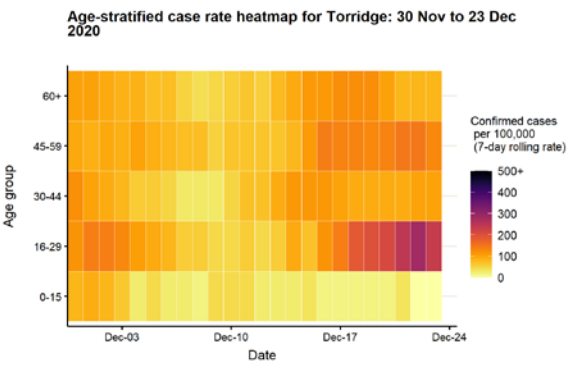
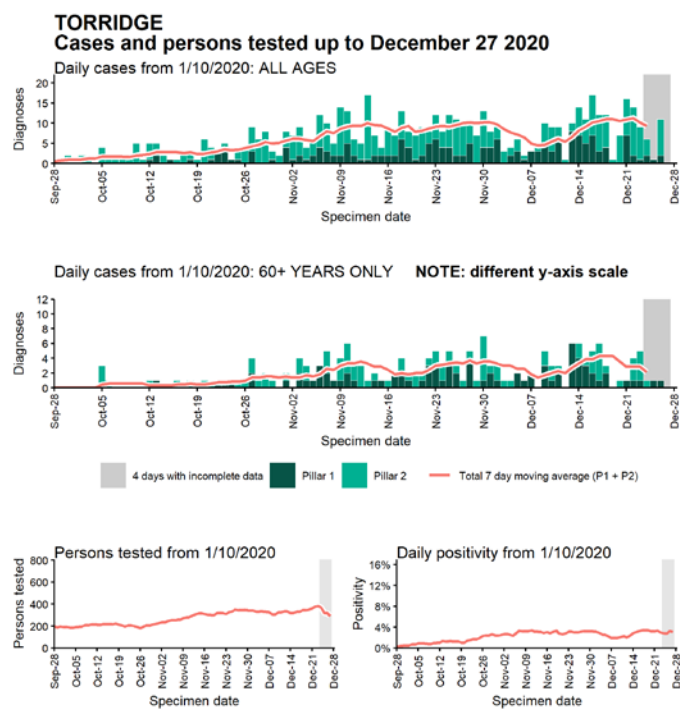
Data from SGSS. Produced by Outbreak Surveillance Team, PHE

Case numbers, testing numbers and positivity, Torbay : 01 Sep to 27 Dec 2020



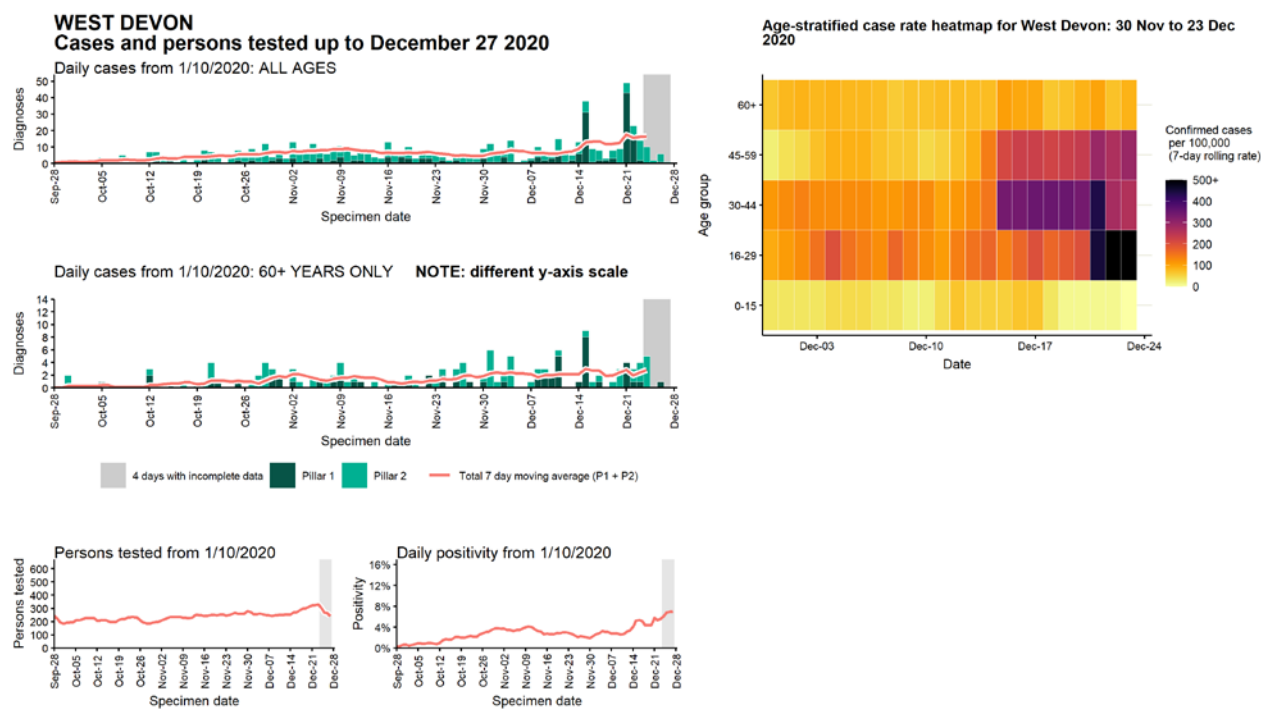
Data from SGSS. Produced by Outbreak Surveillance Team, PHE

Case numbers, testing numbers and positivity, Torridge : 01 Sep to 27 Dec 2020



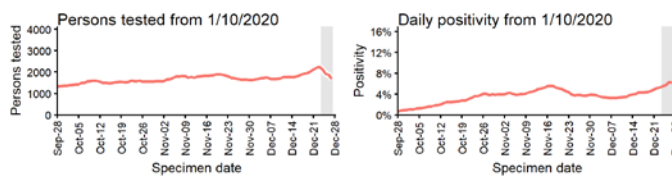
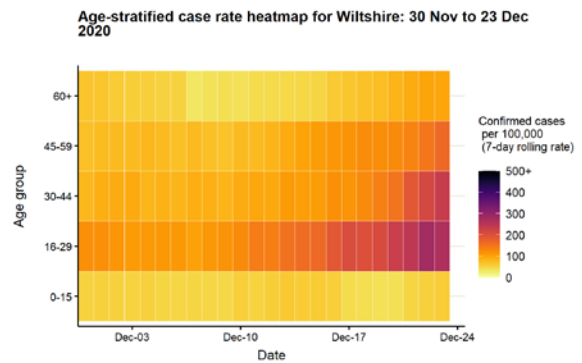
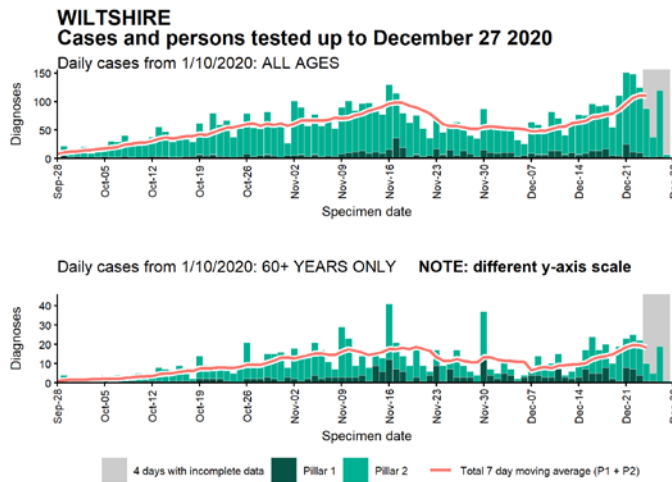
Data from SGSS. Produced by Outbreak Surveillance Team, PHE

Case numbers, testing numbers and positivity, West Devon : 01 Sep to 27 Dec 2020



Data from SGSS. Produced by Outbreak Surveillance Team, PHE

Case numbers, testing numbers and positivity, Wiltshire : 01 Sep to 27 Dec 2020



Data from SGSS. Produced by Outbreak Surveillance Team, PHE

© Crown copyright 2020

www.gov.uk/dhsc

This publication is licensed under the terms of the Open Government Licence v3.0 except where otherwise stated. To view this licence, visit nationalarchives.gov.uk/doc/open-government-licence/version/3

Where we have identified any third party copyright information you will need to obtain permission from the copyright holders concerned.

