



Department  
of Health &  
Social Care

# South East: lower tier local authority watchlist – epidemiological charts

Produced 28 December 2020

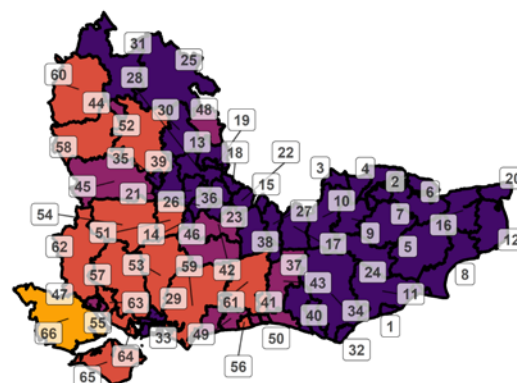
## NOTES

- This data is provided by Public Health England for the purpose of monitoring and supporting the management of Covid-19 infections in Local Authorities.
- The reports are produced using 2019 ONS population data
- If you would like to know the weekly trend for the case rate charts and persons tested chart please see Lower-tier local authority watchlist.

## Weekly case rate per 100,000 population by local authority: 17 Dec to 23 Dec 2020

Rank	Local Authority	Case Rate (per 100,000)	Number of cases (1 week)	Rank	Local Authority	Case Rate (per 100,000)	Number of cases (1 week)
1	Hastings	1080.3	1001	34	Wealden	440.3	711
2	Medway	1037.5	2890	35	Reading	440.1	712
3	Dartford	981.3	1105	36	Runnymede	428.3	383
4	Gravesham	974.4	1042	37	Crawley	420.8	473
5	Ashford	842.9	1096	38	Mole Valley	414.9	362
6	Swale	797.6	1197	39	Wokingham	409.1	700
7	Maidstone	766.5	1317	40	Leves	405.7	419
8	Folkestone and Hythe	720.4	814	41	Adur	381.0	245
9	Tonbridge and Malling	704.5	931	42	Guildford	377.9	563
10	Sevenoaks	699.8	845	43	Mid Sussex	370.1	559
11	Rother	693.2	666	44	Oxford	364.0	555
12	Dover	650.1	768	45	West Berkshire	356.6	565
13	South Bucks	640.3	451	46	Waverley	349.9	442
14	Rushmoor	638.5	604	47	Southampton	329.9	833
15	Epsom and Ewell	636.3	513	48	Chiltern	324.8	312
16	Canterbury	632.4	1046	49	Arun	304.2	489
17	Tandridge	627.5	553	50	Brighton and Hove	301.5	877
18	Spelthorne	618.0	617	51	Hart	298.7	290
19	Slough	585.1	875	52	South Oxfordshire	293.5	417
20	Thanet	565.8	803	53	East Hampshire	282.9	346
21	Bracknell Forest	559.0	685	54	Basingstoke and Deane	270.1	477
22	Elmbridge	555.6	760	55	Fareham	269.3	313
23	Woking	552.6	557	56	Worthing	254.1	281
24	Tunbridge Wells	535.7	636	57	Winchester	249.1	311
25	Aylesbury Vale	504.9	1026	58	Vale of White Horse	244.8	333
26	Surrey Heath	497.2	444	59	Chichester	243.5	295
27	Reigate and Banstead	492.1	732	60	West Oxfordshire	230.5	255
28	Windsor and Maidenhead	484.7	734	61	Horsham	221.8	319
29	Havant	480.9	607	62	Test Valley	219.6	277
30	Wycombe	471.1	821	63	Eastleigh	217.1	290
31	Cherwell	464.4	699	64	Gosport	213.3	181
32	Eastbourne	462.7	480	65	Isle of Wight	207.4	294
33	Portsmouth	443.5	953	66	New Forest	146.6	264

**South East**  
**COVID-19 cases: 17 Dec to 23 Dec 2020**  
Weekly case rates per 100,000 population by local authority



Covid-19 rate by local authority

0-49.9/100k	100-199.9/100k	300-399.9/100k
50-99.9/100k	200-299.9/100k	400+/100k

Data from SGSS; Pillar 1 and 2 testing. Figure by Outbreak Surveillance Team, Public Health England.

Contains National Statistics data including 2019 population estimates Â© Crown copyright and database right 2020

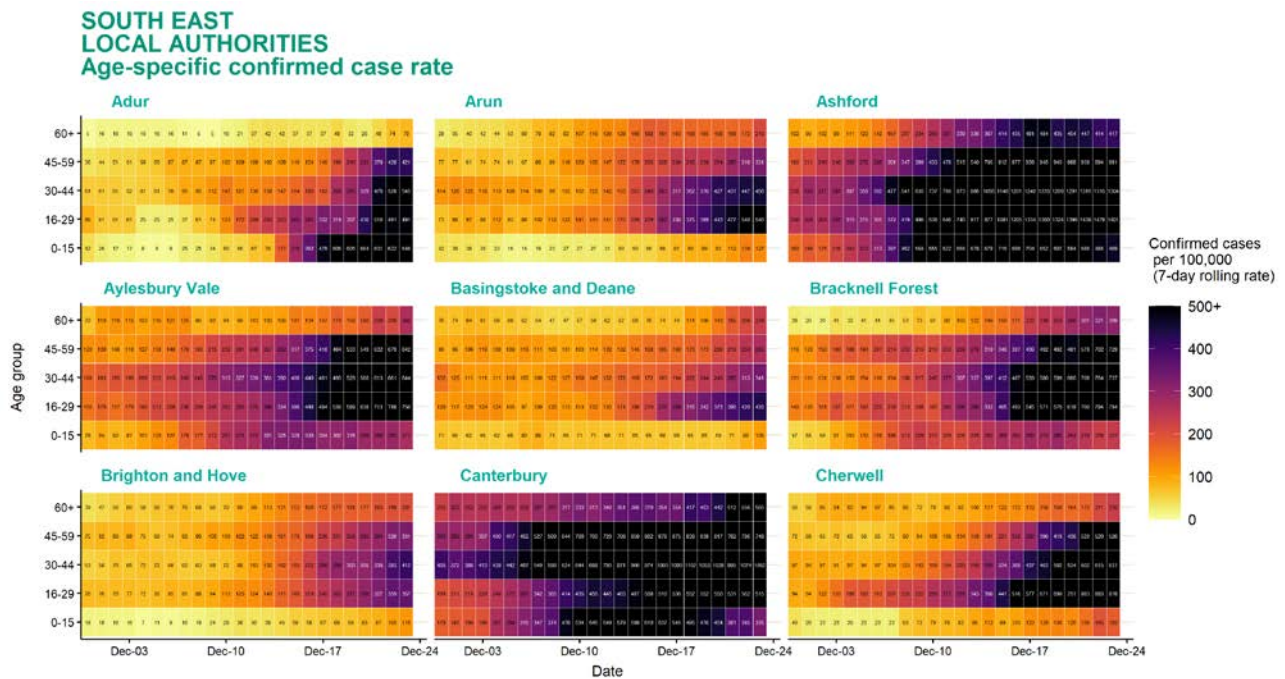
# Age-stratified heatmap of weekly case rate for South East : 30 Nov to 23 Dec 2020



Source: Case data from SGSS. Produced by Outbreak Surveillance Team, PHE

Contains National Statistics data Â© Crown copyright and database right 2020

# Age-stratified heatmap of weekly case rate by local authority for South East : 30 Nov to 23 Dec 2020

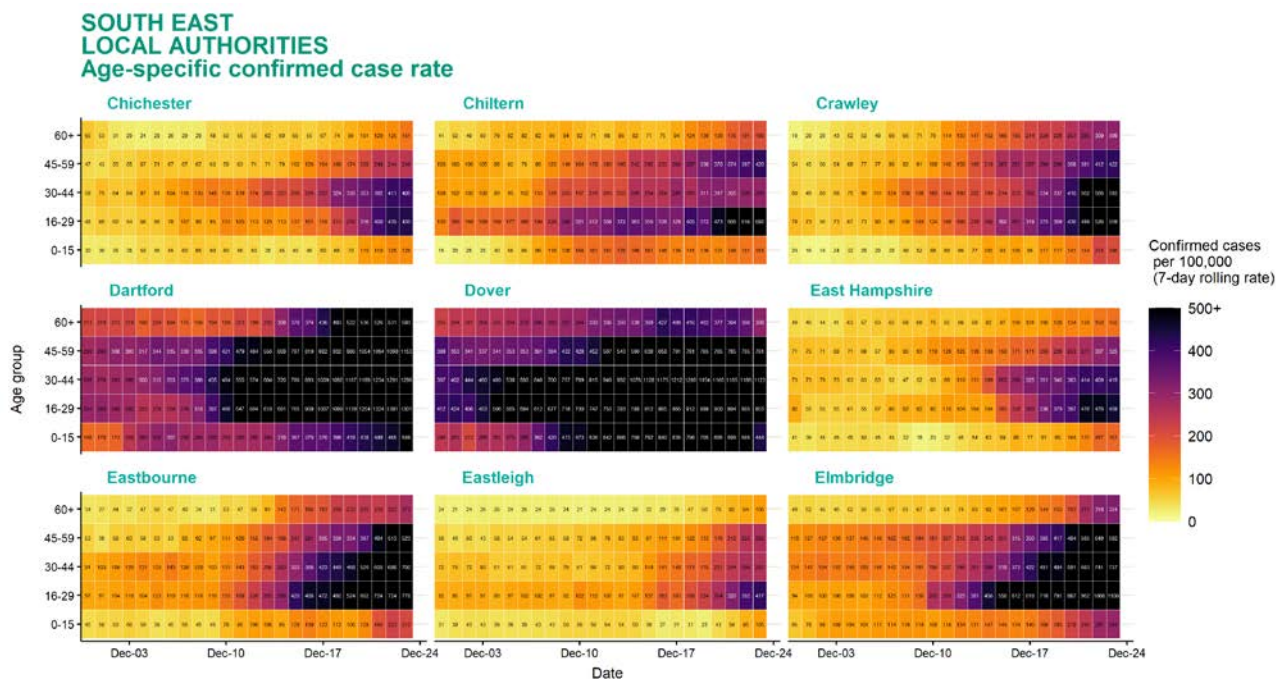


Source: Case data from SGSS. Produced by Outbreak Surveillance Team, PHE

Contains National Statistics data Â© Crown copyright and database right 2020



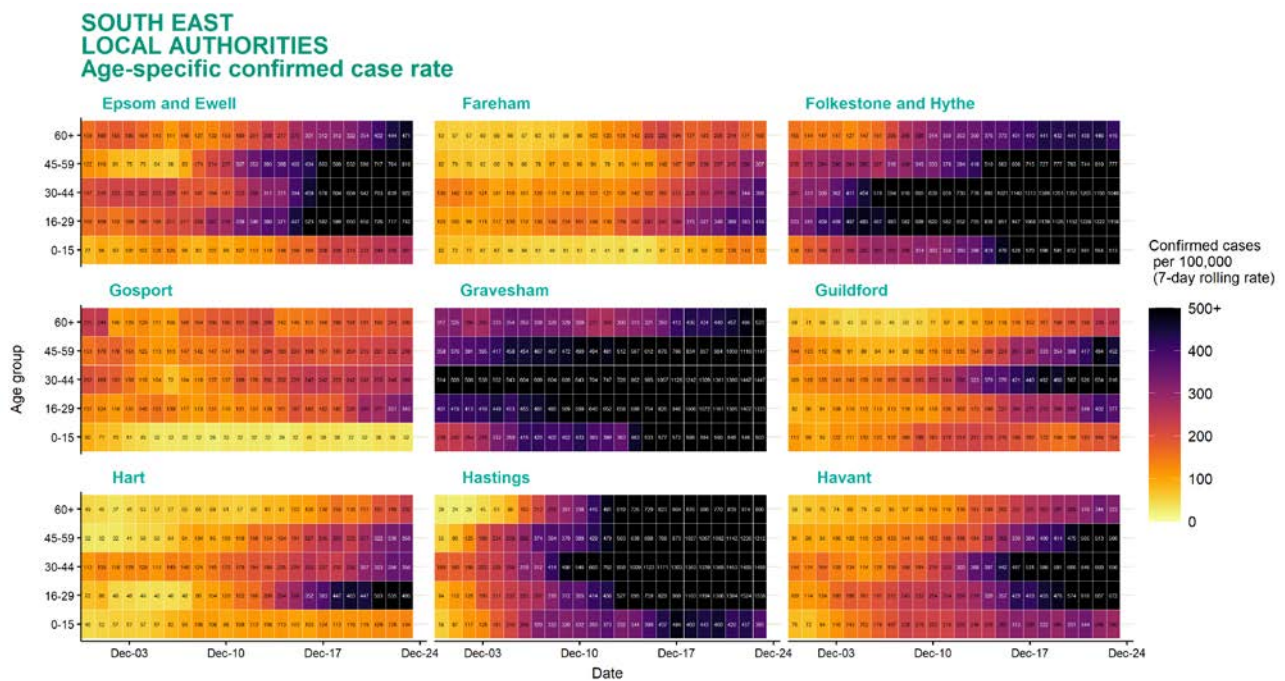
## Age-stratified heatmap of weekly case rate by local authority for South East : 30 Nov to 23 Dec 2020



Source: Case data from SGSS. Produced by Outbreak Surveillance Team, PHE

Contains National Statistics data Â© Crown copyright and database right 2020

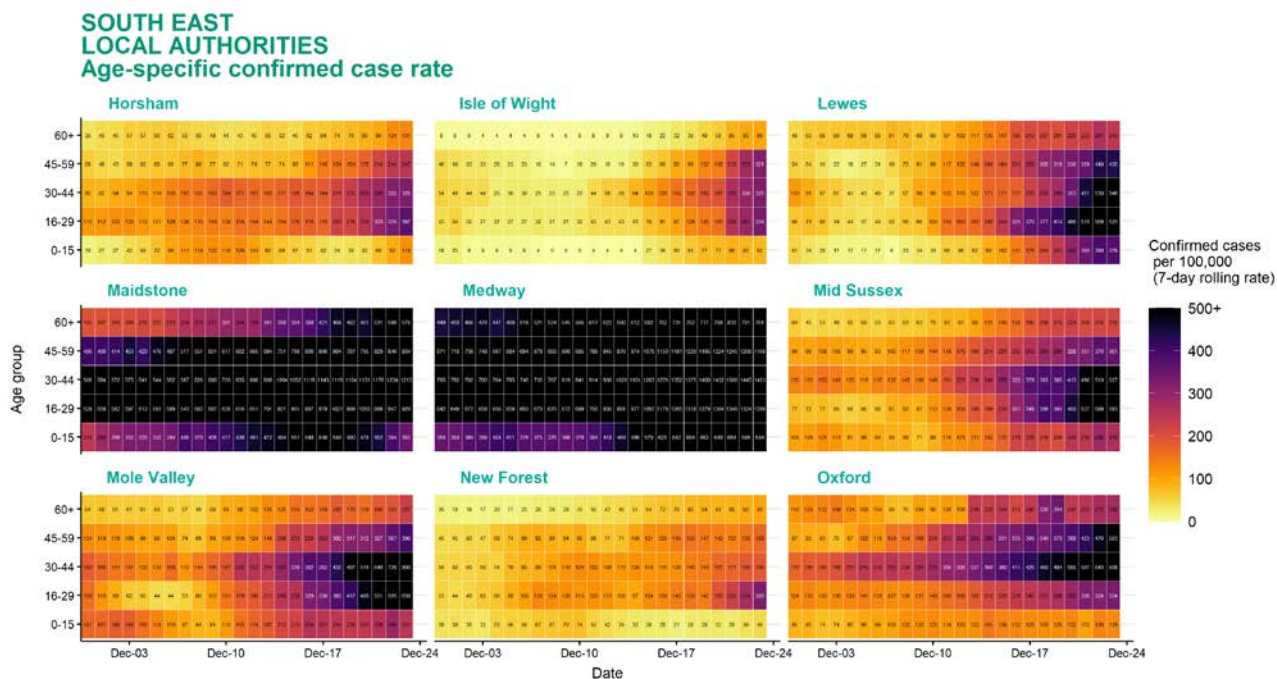
## Age-stratified heatmap of weekly case rate by local authority for South East : 30 Nov to 23 Dec 2020



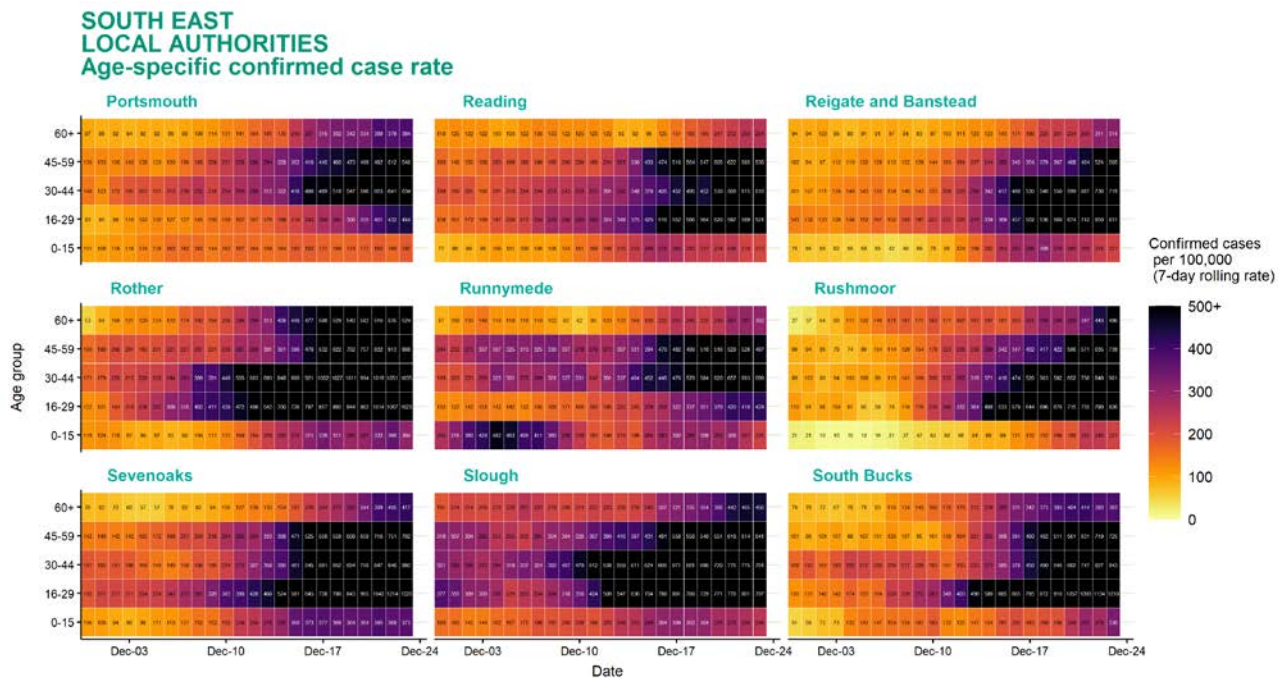
Source: Case data from SGSS. Produced by Outbreak Surveillance Team, PHE

Contains National Statistics data Â© Crown copyright and database right 2020

## Age-stratified heatmap of weekly case rate by local authority for South East : 30 Nov to 23 Dec 2020



## Age-stratified heatmap of weekly case rate by local authority for South East : 30 Nov to 23 Dec 2020

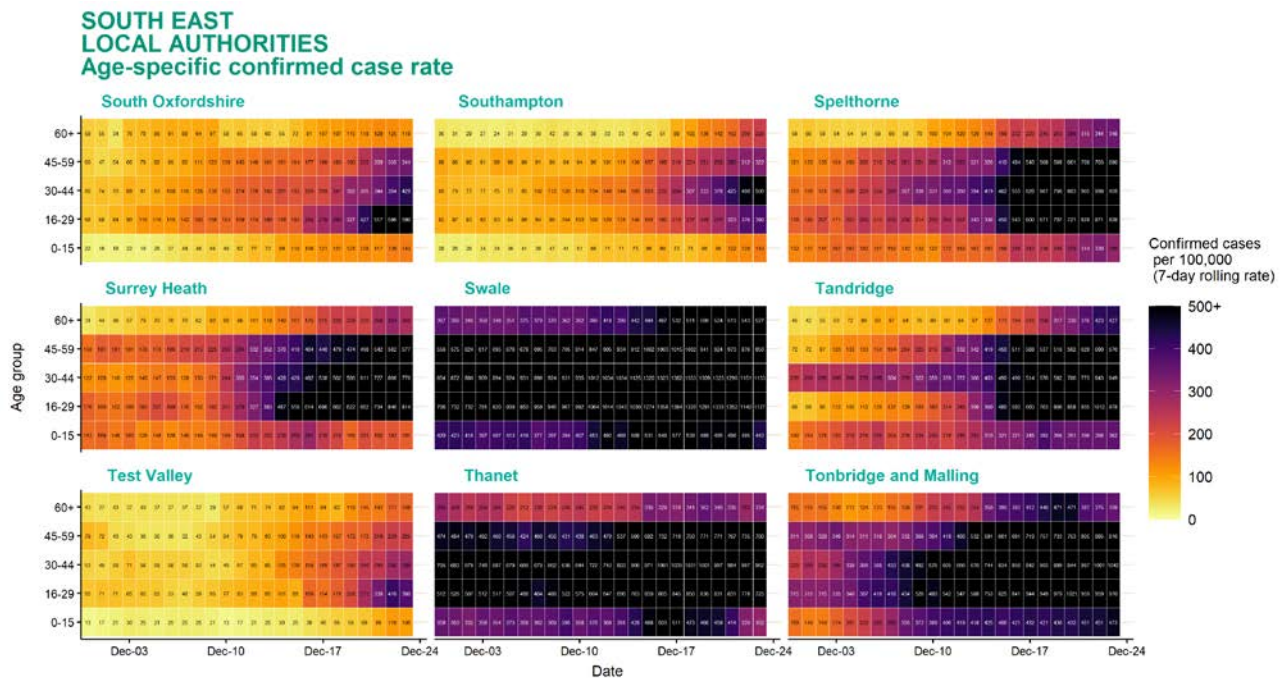


Source: Case data from SGSS. Produced by Outbreak Surveillance Team, PHE

Contains National Statistics data Â© Crown copyright and database right 2020



# Age-stratified heatmap of weekly case rate by local authority for South East : 30 Nov to 23 Dec 2020



Source: Case data from SGSS. Produced by Outbreak Surveillance Team, PHE

Contains National Statistics data Â© Crown copyright and database right 2020

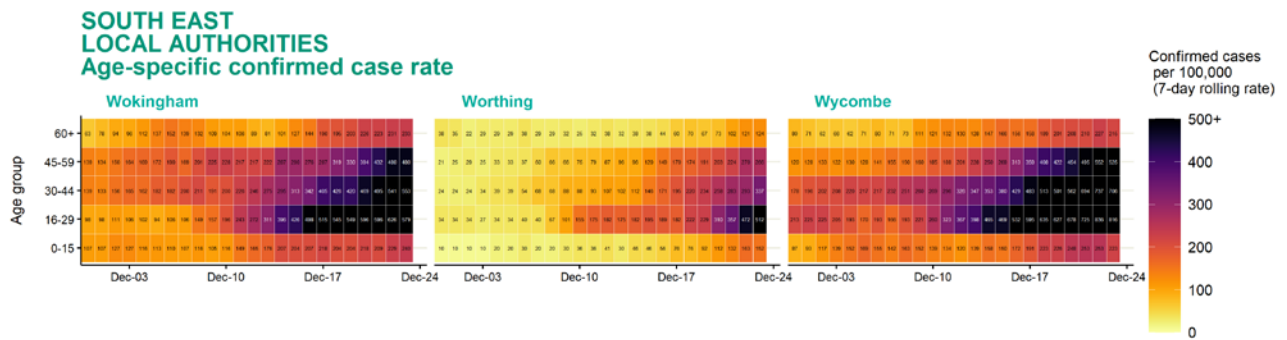
## Age-stratified heatmap of weekly case rate by local authority for South East : 30 Nov to 23 Dec 2020



Source: Case data from SGSS. Produced by Outbreak Surveillance Team, PHE

Contains National Statistics data Â© Crown copyright and database right 2020

## Age-stratified heatmap of weekly case rate by local authority for South East : 30 Nov to 23 Dec 2020

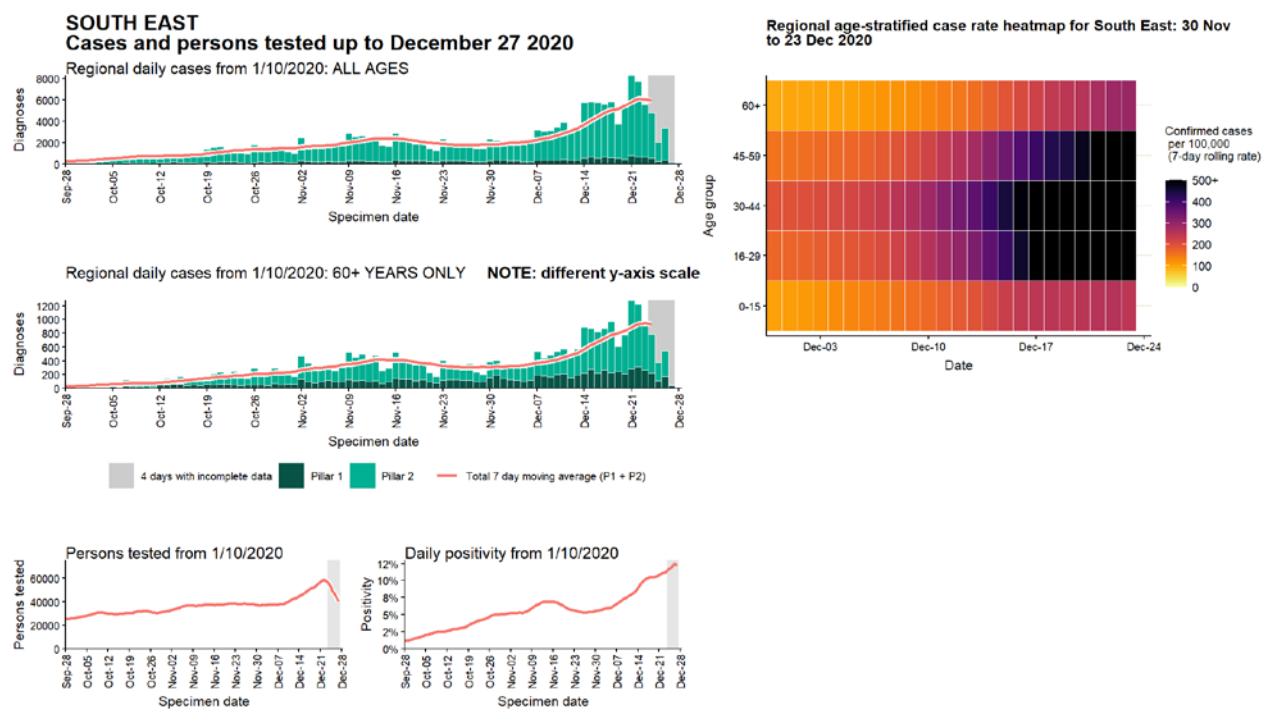


Date

Source: Case data from SGSS. Produced by Outbreak Surveillance Team, PHE

Contains National Statistics data Â© Crown copyright and database right 2020

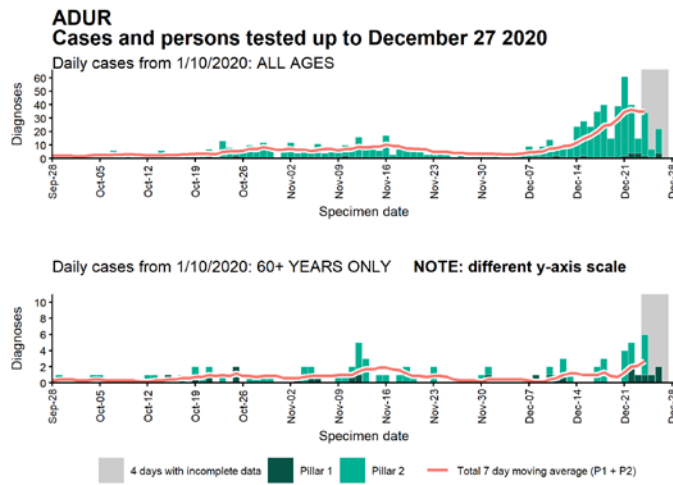
Regional case numbers, testing numbers and positivity, South East :  
01 Sep to 27 Dec 2020



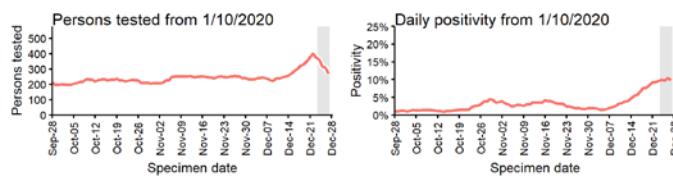
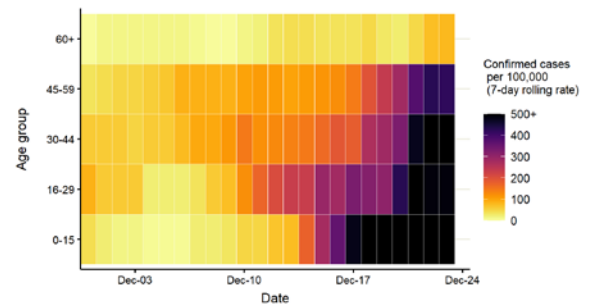
Data from SGSS. Produced by Outbreak Surveillance Team, PHE



## Case numbers, testing numbers and positivity, Adur : 01 Sep to 27 Dec 2020

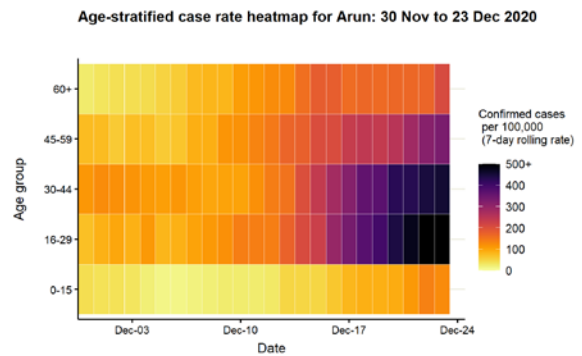
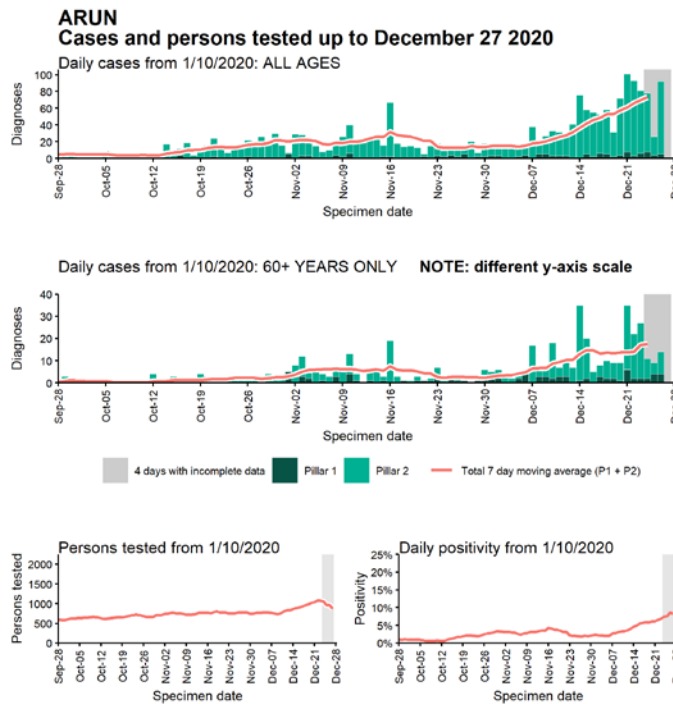


Age-stratified case rate heatmap for Adur: 30 Nov to 23 Dec 2020



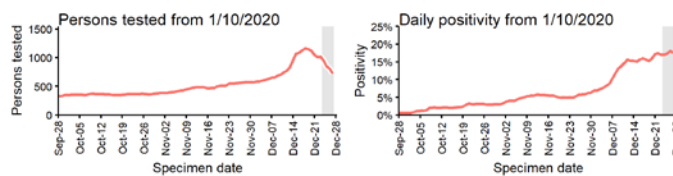
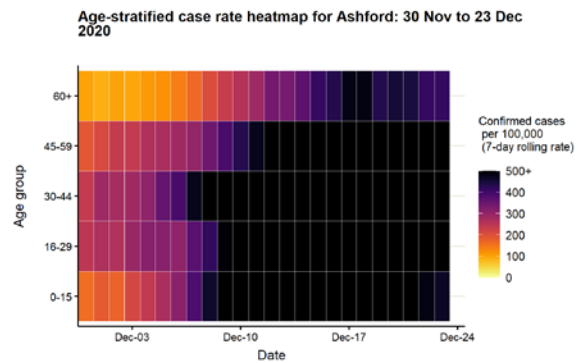
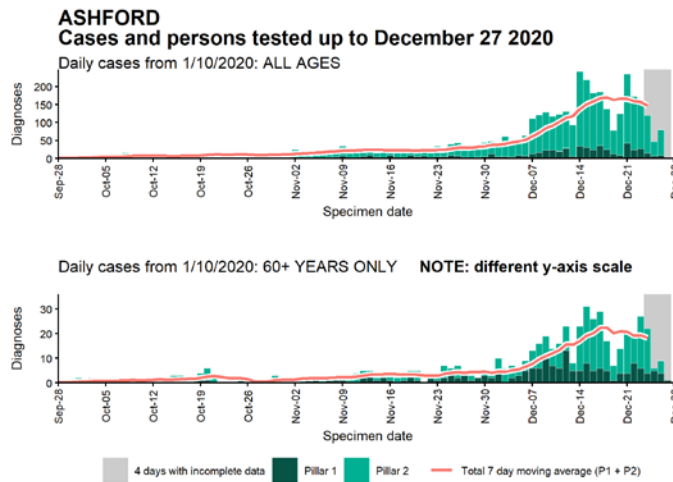
Data from SGSS. Produced by Outbreak Surveillance Team, PHE

## Case numbers, testing numbers and positivity, Arun : 01 Sep to 27 Dec 2020



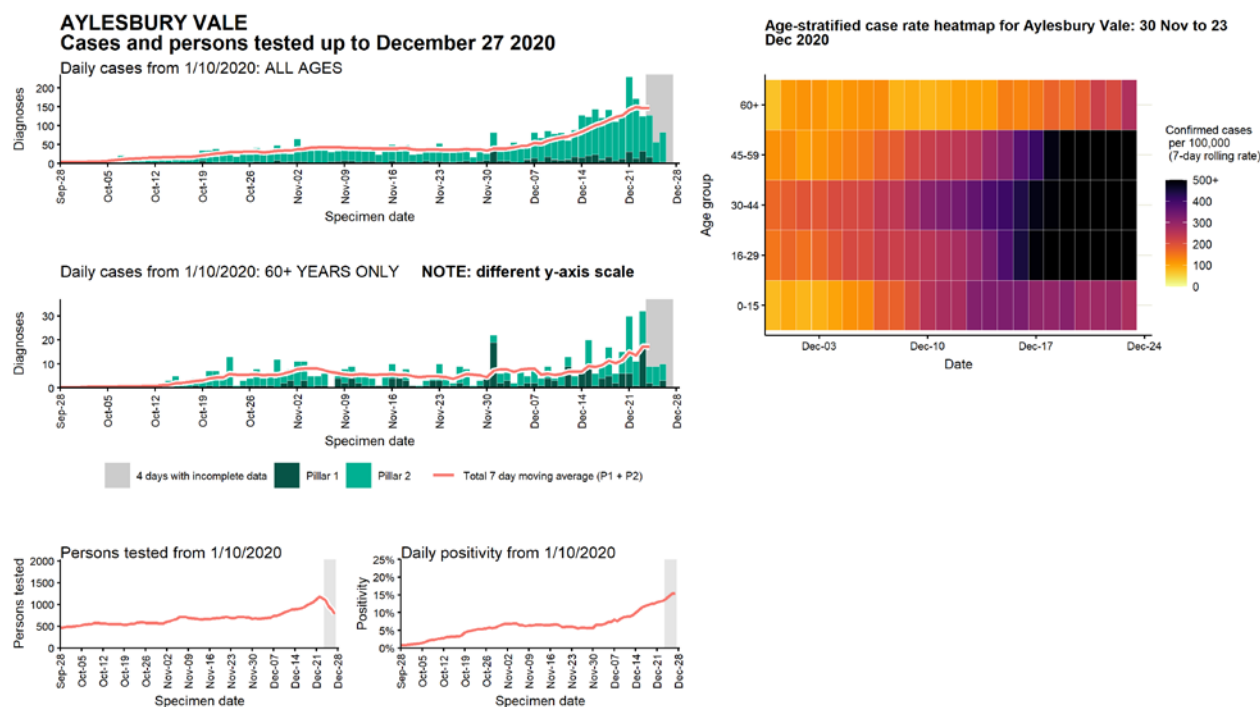
Data from SGSS. Produced by Outbreak Surveillance Team, PHE

## Case numbers, testing numbers and positivity, Ashford : 01 Sep to 27 Dec 2020



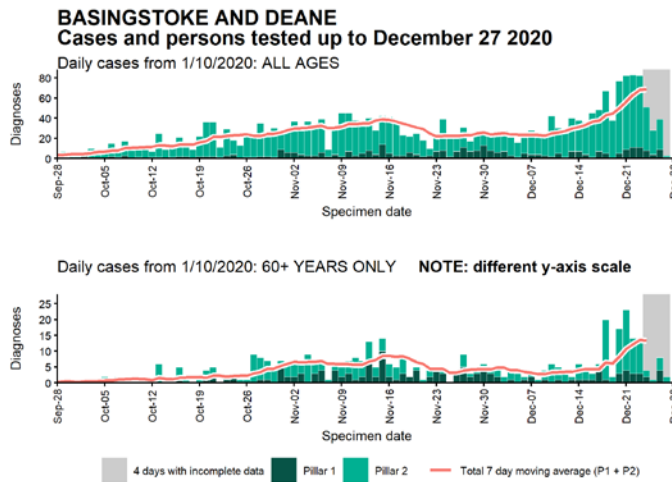
Data from SGSS. Produced by Outbreak Surveillance Team, PHE

# Case numbers, testing numbers and positivity, Aylesbury Vale : 01 Sep to 27 Dec 2020

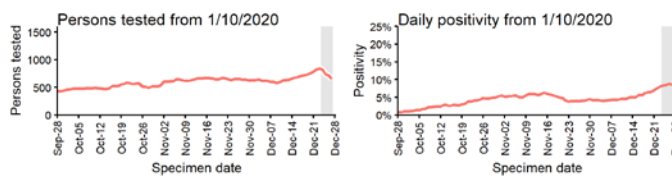
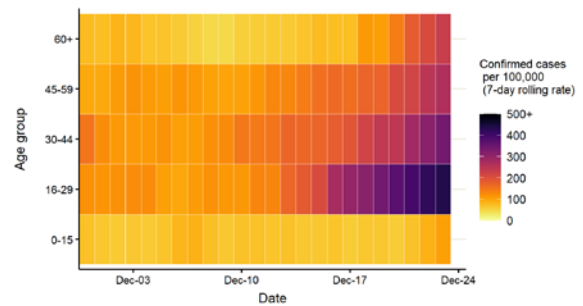


Data from SGSS. Produced by Outbreak Surveillance Team, PHE

## Case numbers, testing numbers and positivity, Basingstoke and Deane : 01 Sep to 27 Dec 2020

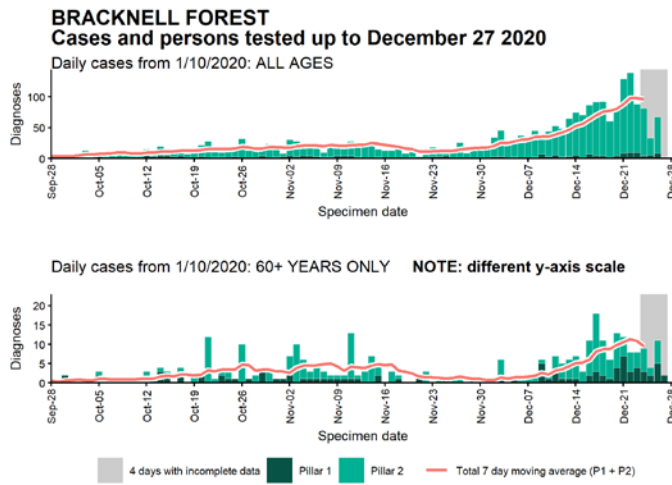


Age-stratified case rate heatmap for Basingstoke and Deane: 30 Nov to 23 Dec 2020

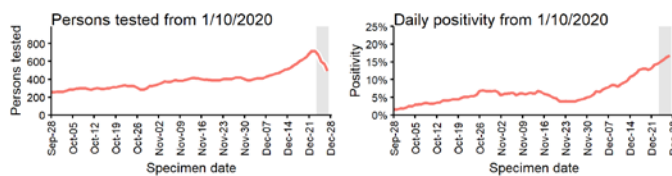
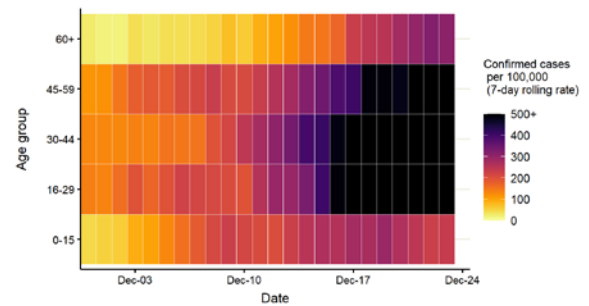


Data from SGSS. Produced by Outbreak Surveillance Team, PHE

## Case numbers, testing numbers and positivity, Bracknell Forest : 01 Sep to 27 Dec 2020

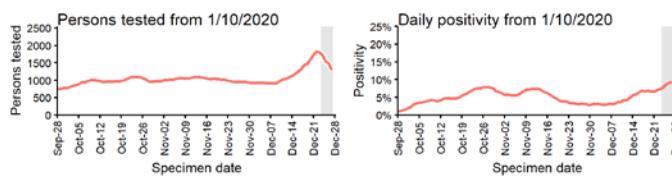
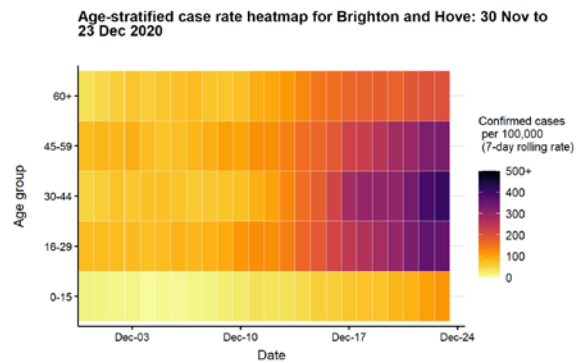
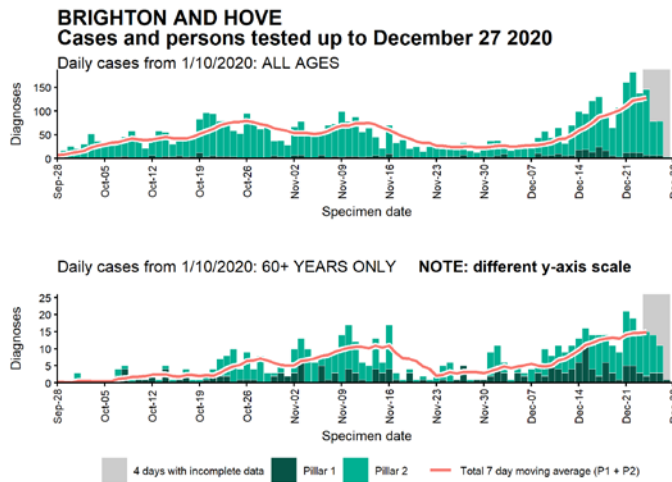


Age-stratified case rate heatmap for Bracknell Forest: 30 Nov to 23 Dec 2020



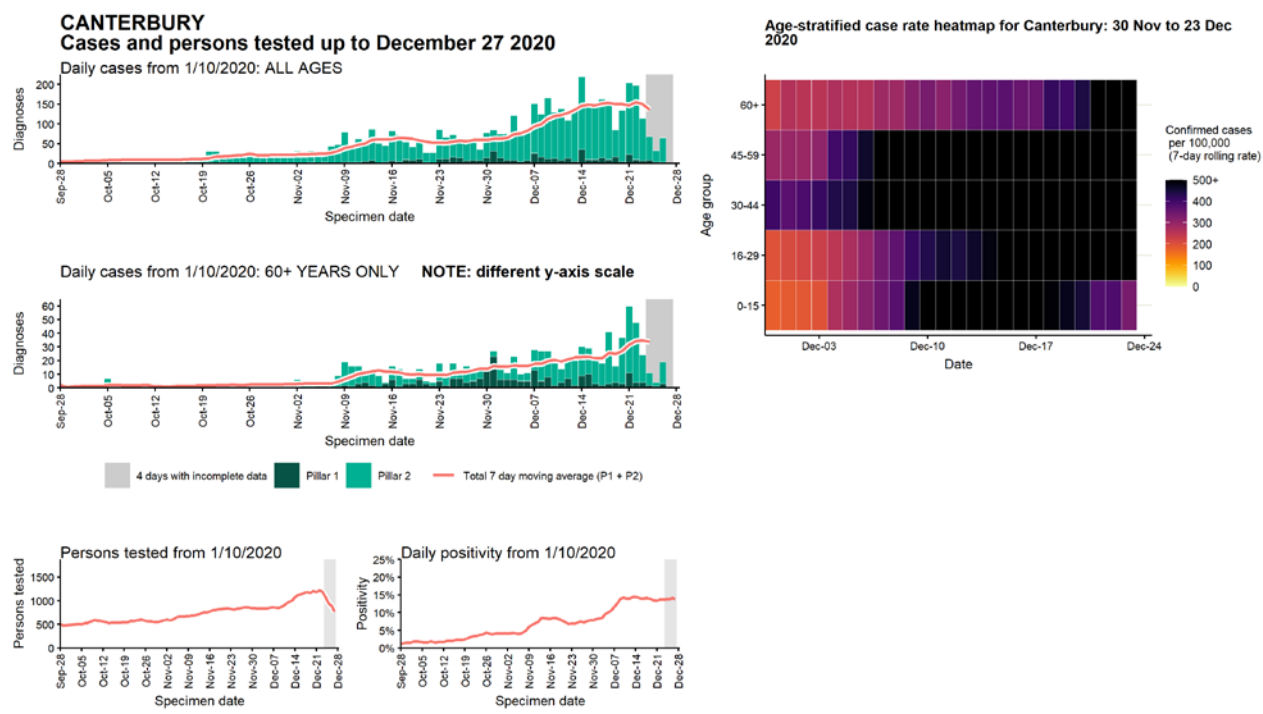
Data from SGSS. Produced by Outbreak Surveillance Team, PHE

## Case numbers, testing numbers and positivity, Brighton and Hove : 01 Sep to 27 Dec 2020



Data from SGSS. Produced by Outbreak Surveillance Team, PHE

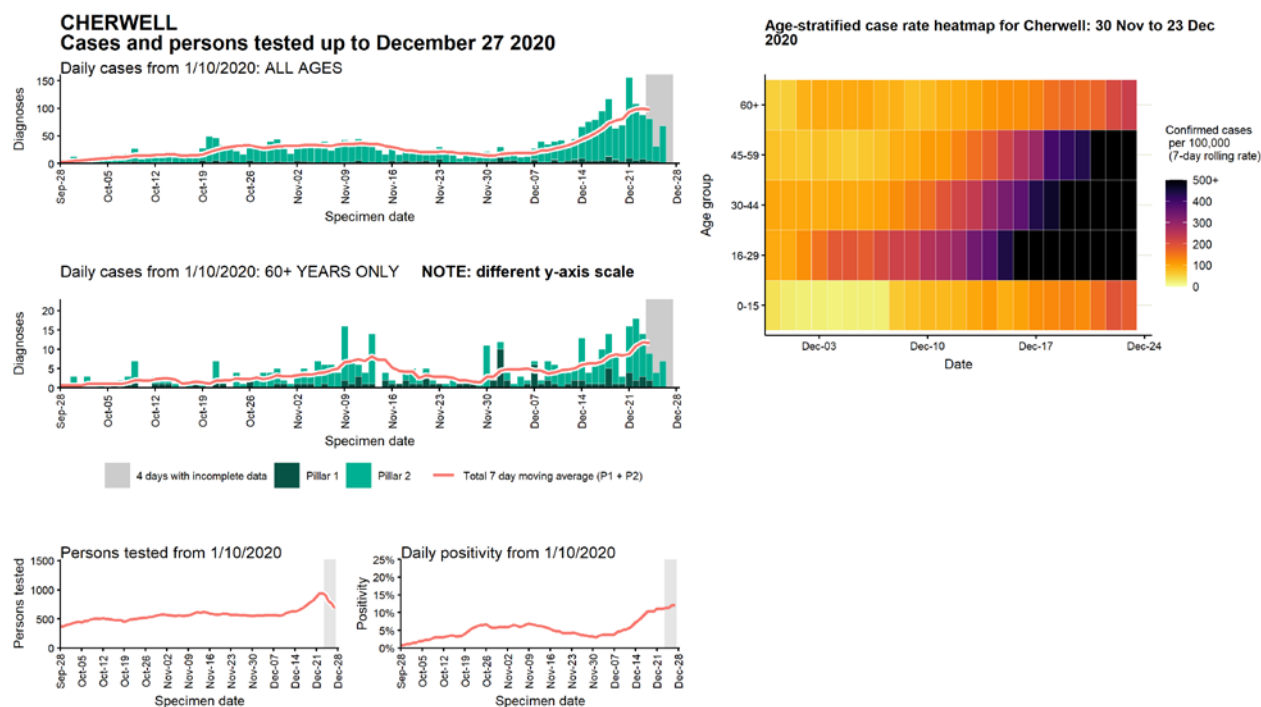
Case numbers, testing numbers and positivity, Canterbury : 01 Sep to 27 Dec 2020



Data from SGSS. Produced by Outbreak Surveillance Team, PHE

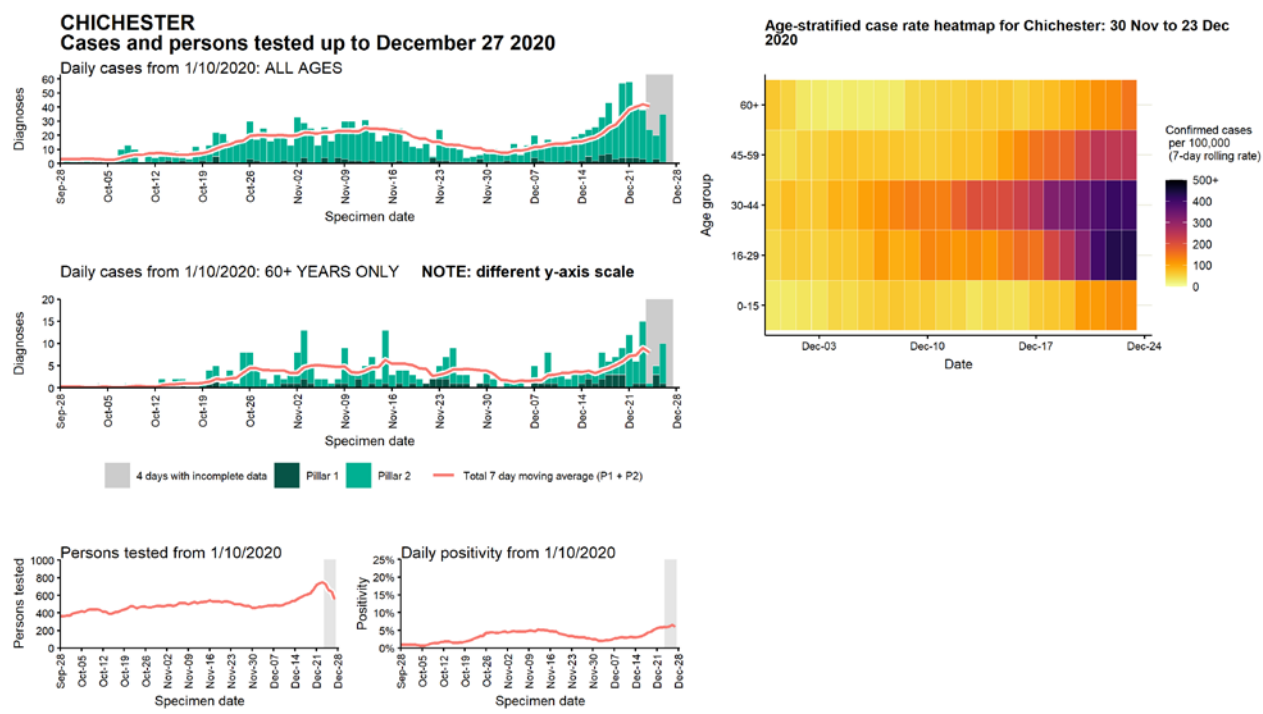


# Case numbers, testing numbers and positivity, Cherwell : 01 Sep to 27 Dec 2020



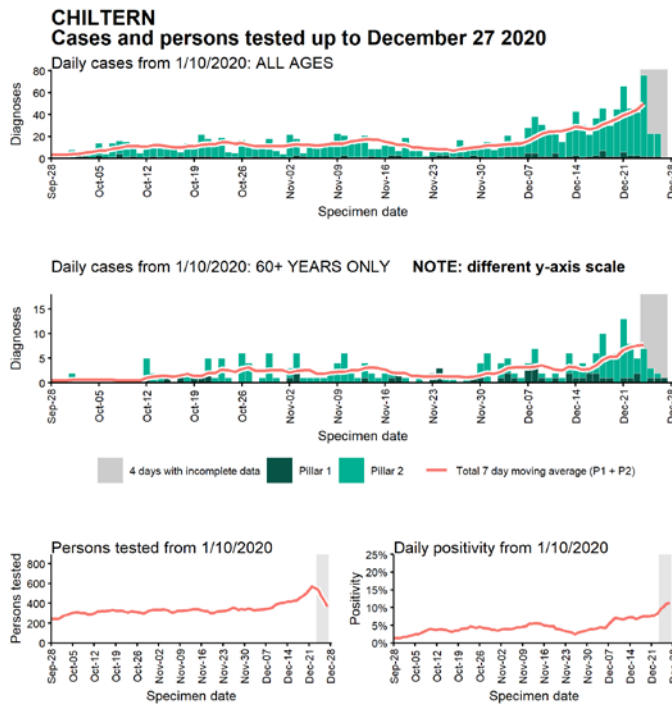
Data from SGSS. Produced by Outbreak Surveillance Team, PHE

# Case numbers, testing numbers and positivity, Chichester : 01 Sep to 27 Dec 2020

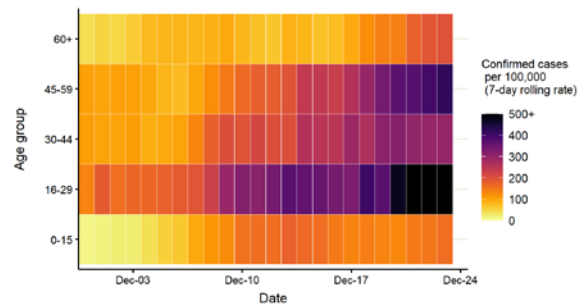


Data from SGSS. Produced by Outbreak Surveillance Team, PHE

## Case numbers, testing numbers and positivity, Chiltern : 01 Sep to 27 Dec 2020

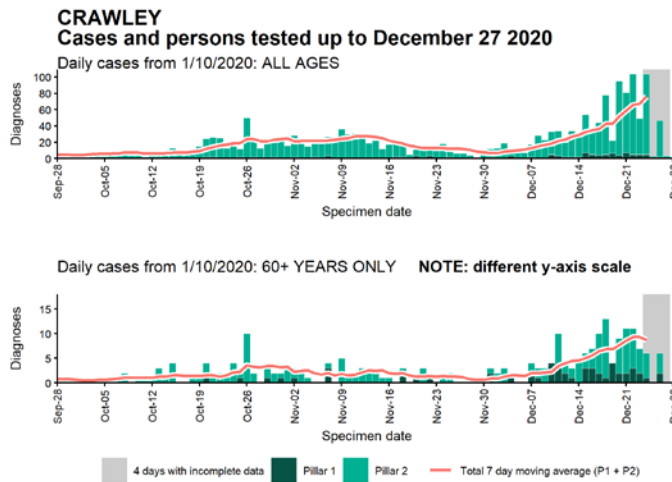


Age-stratified case rate heatmap for Chiltern: 30 Nov to 23 Dec 2020

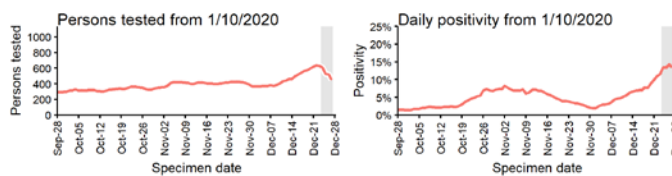
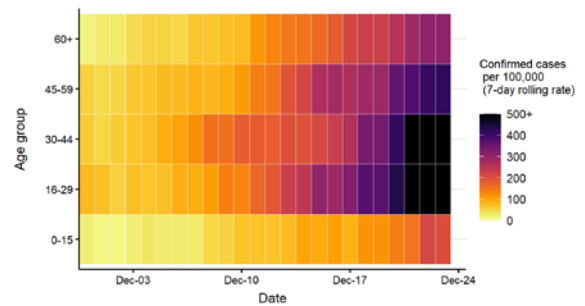


Data from SGSS. Produced by Outbreak Surveillance Team, PHE

## Case numbers, testing numbers and positivity, Crawley : 01 Sep to 27 Dec 2020

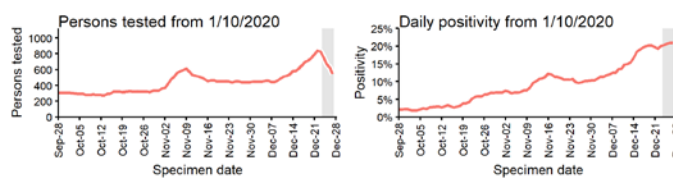
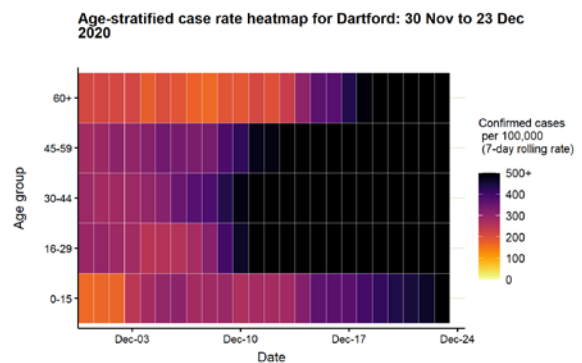
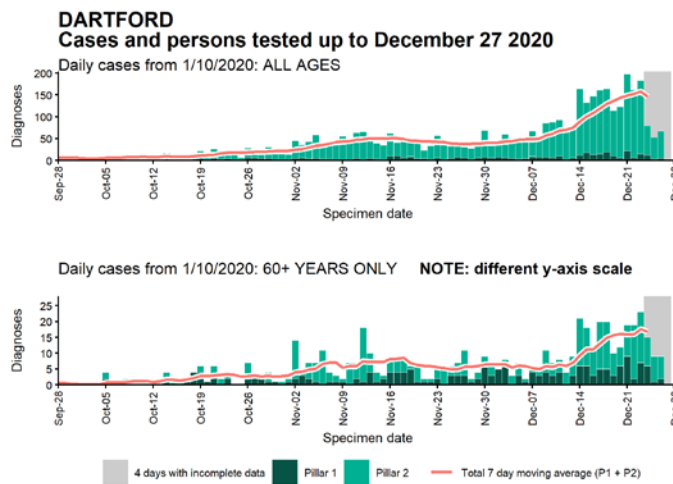


Age-stratified case rate heatmap for Crawley: 30 Nov to 23 Dec 2020



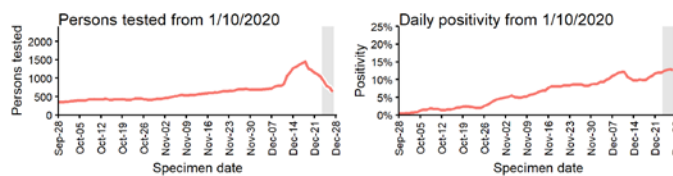
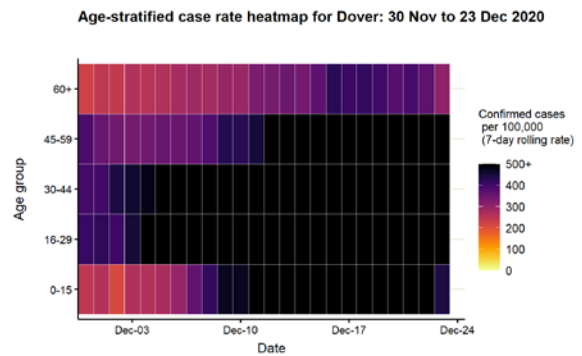
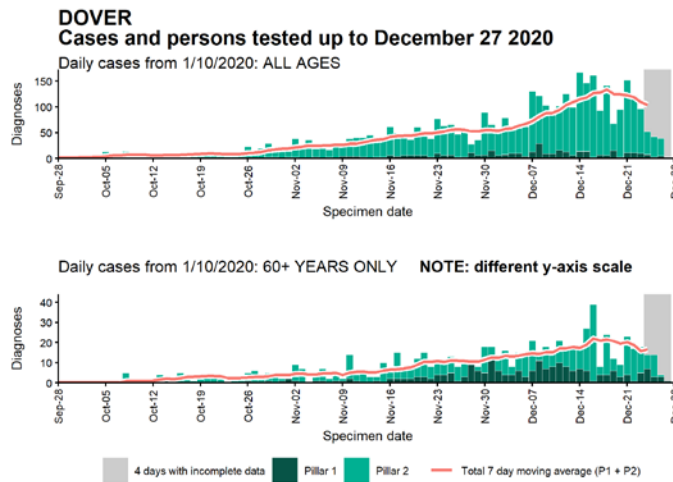
Data from SGSS. Produced by Outbreak Surveillance Team, PHE

## Case numbers, testing numbers and positivity, Dartford : 01 Sep to 27 Dec 2020



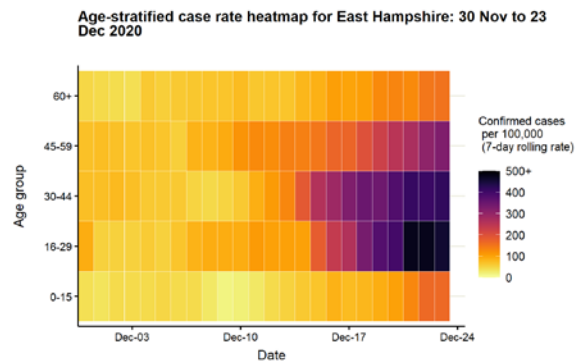
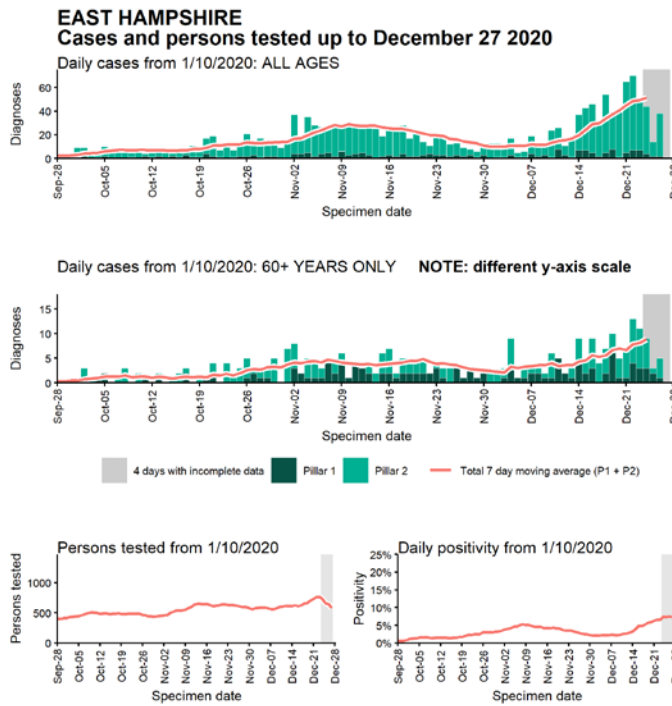
Data from SGSS. Produced by Outbreak Surveillance Team, PHE

## Case numbers, testing numbers and positivity, Dover : 01 Sep to 27 Dec 2020



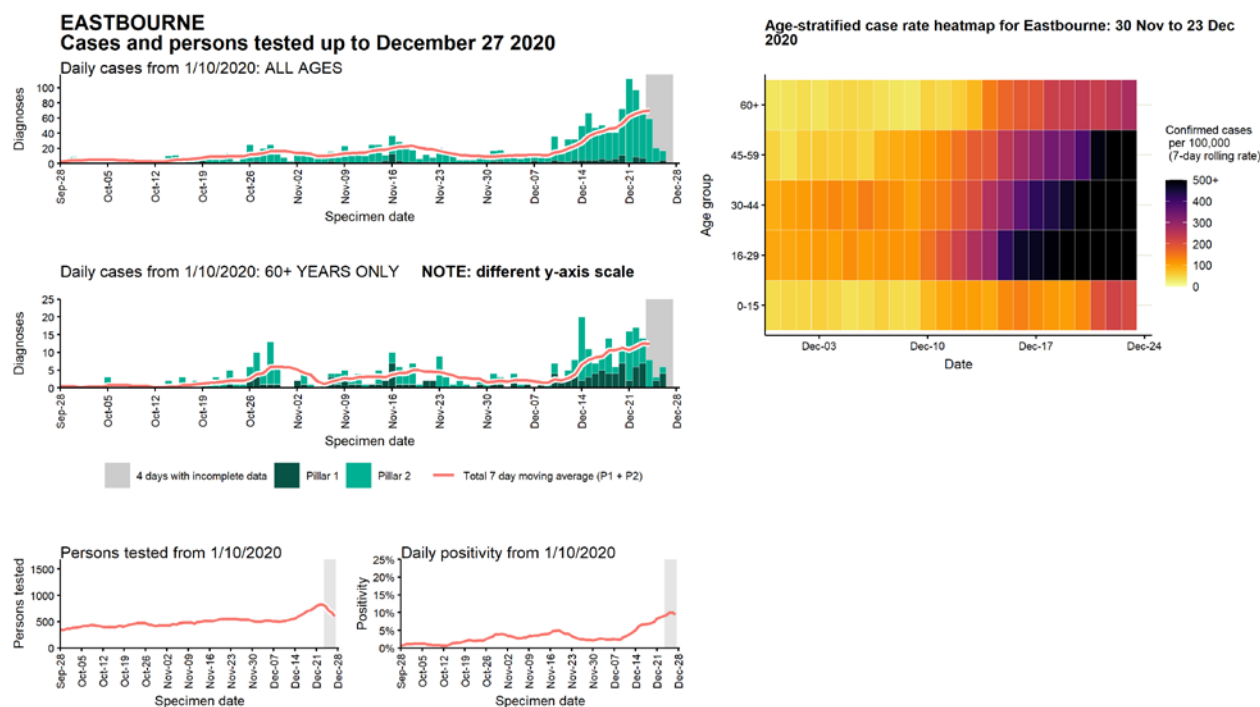
Data from SGSS. Produced by Outbreak Surveillance Team, PHE

## Case numbers, testing numbers and positivity, East Hampshire : 01 Sep to 27 Dec 2020



Data from SGSS. Produced by Outbreak Surveillance Team, PHE

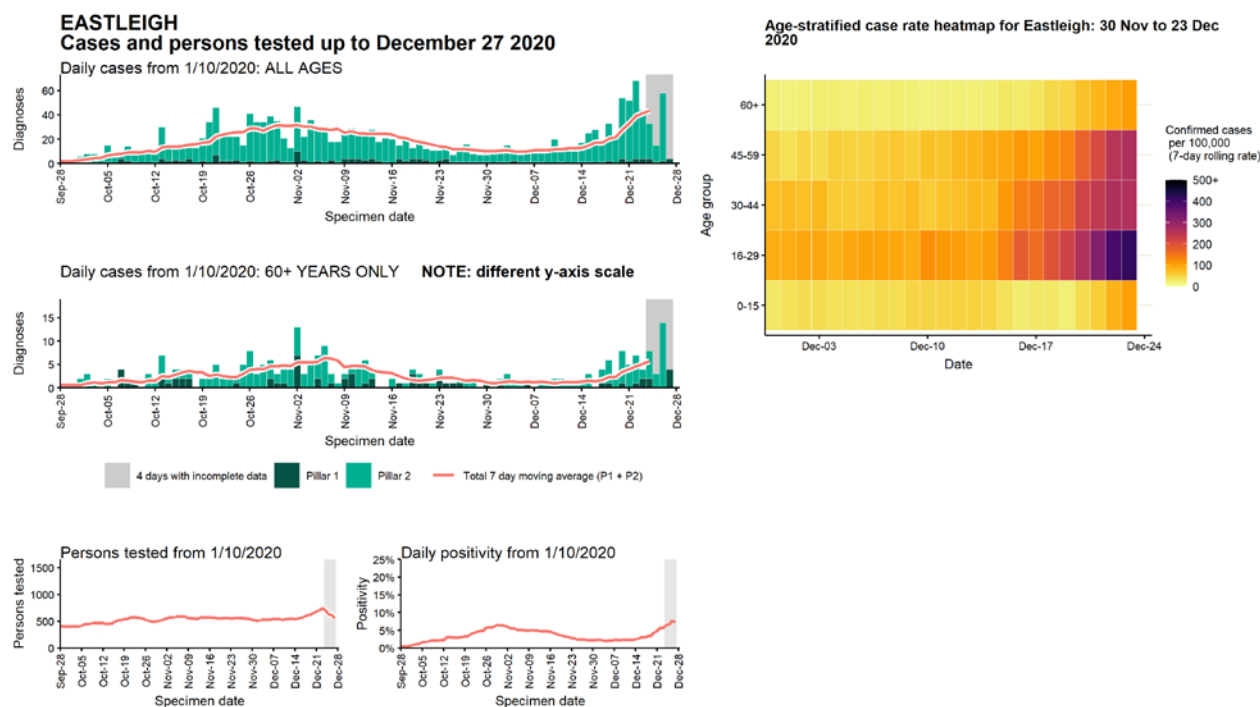
Case numbers, testing numbers and positivity, Eastbourne : 01 Sep to 27 Dec 2020



Data from SGSS. Produced by Outbreak Surveillance Team, PHE

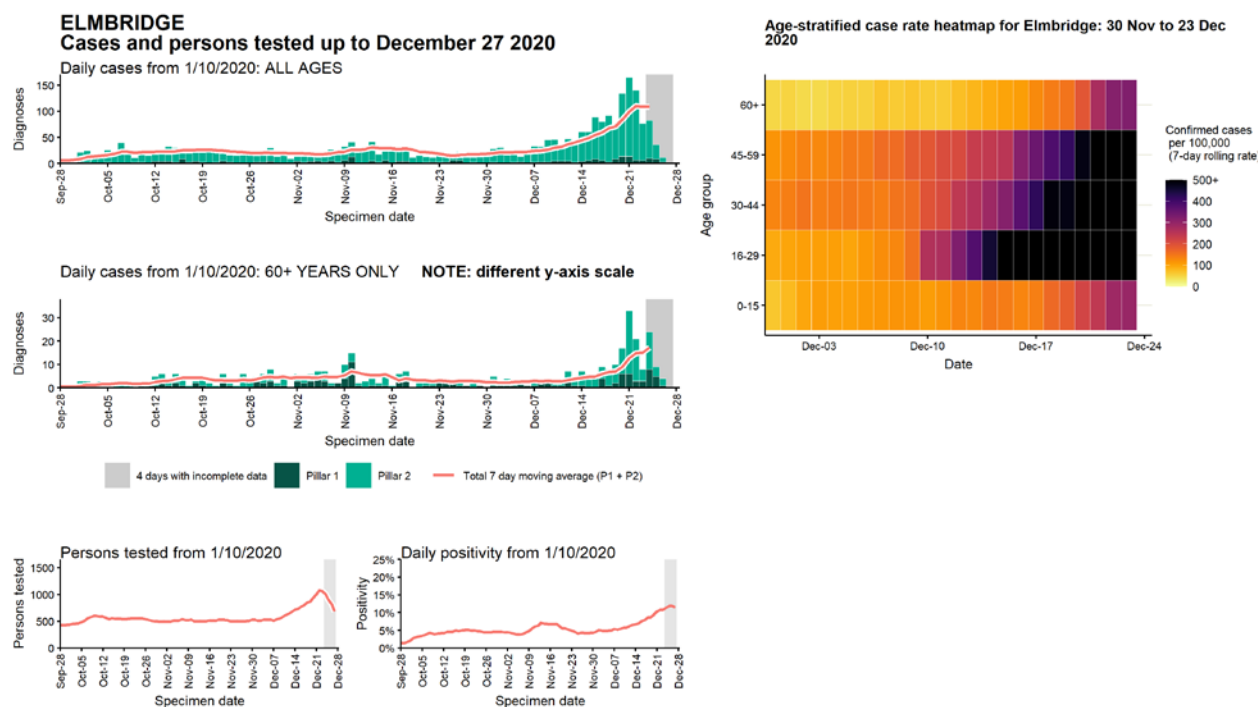


Case numbers, testing numbers and positivity, Eastleigh : 01 Sep to 27 Dec 2020



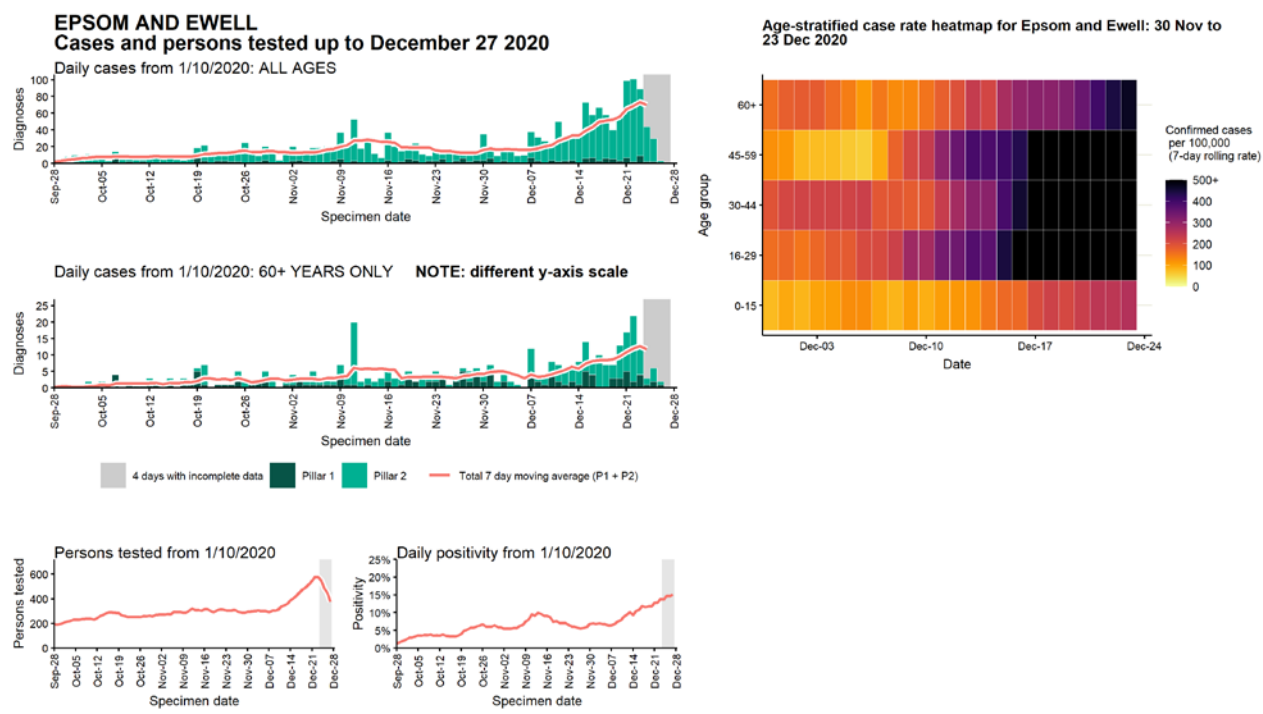
Data from SGSS. Produced by Outbreak Surveillance Team, PHE

Case numbers, testing numbers and positivity, Elmbridge : 01 Sep to 27 Dec 2020



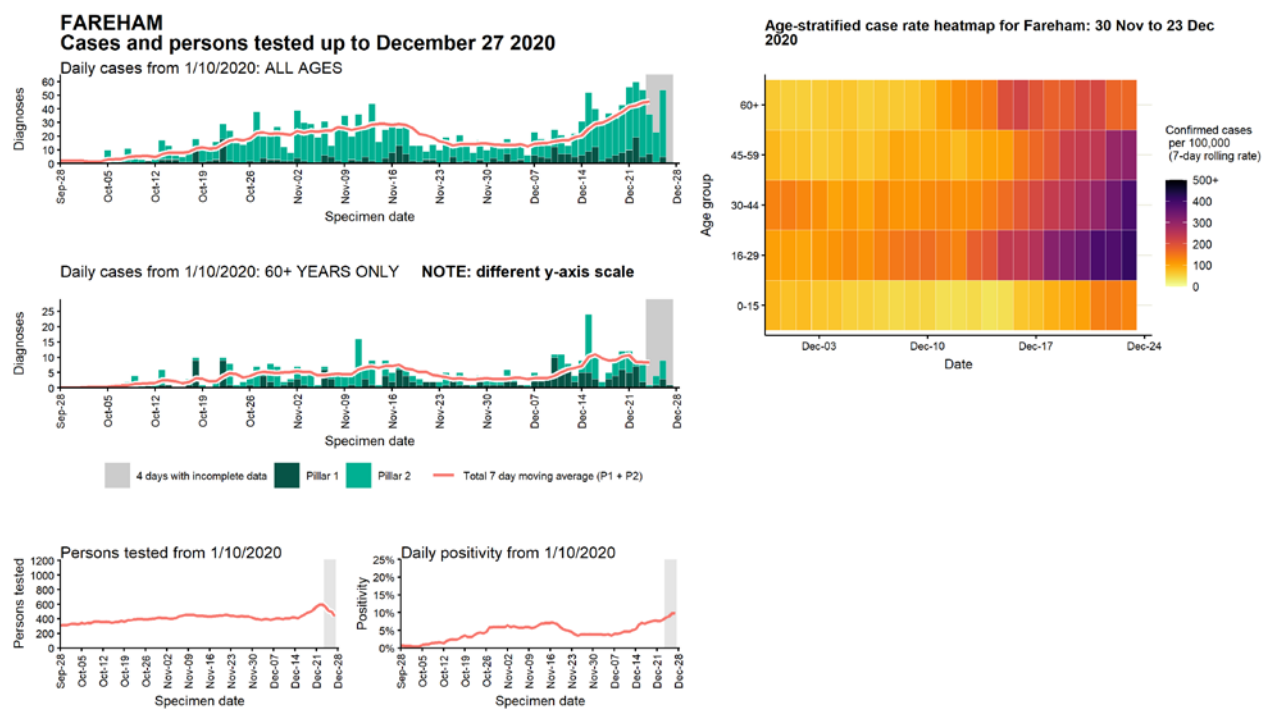
Data from SGSS. Produced by Outbreak Surveillance Team, PHE

# Case numbers, testing numbers and positivity, Epsom and Ewell : 01 Sep to 27 Dec 2020



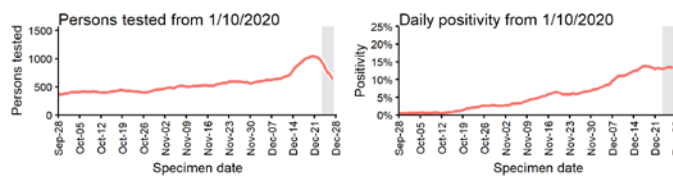
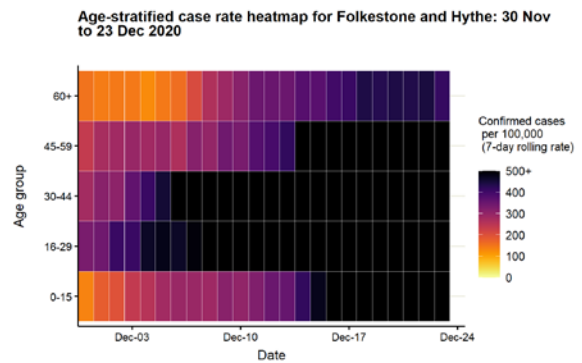
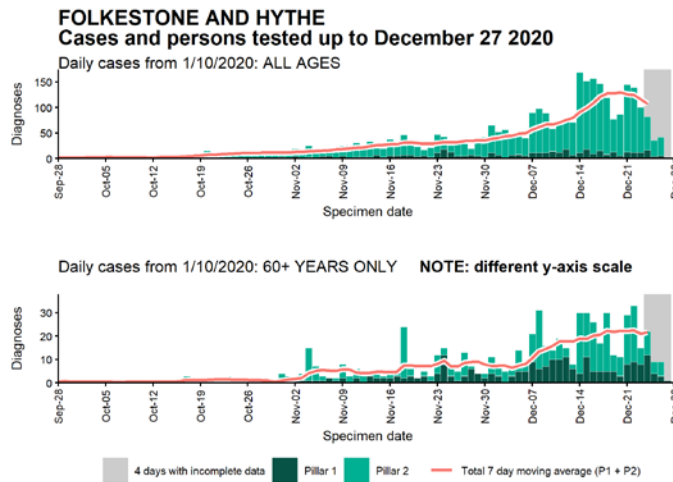
Data from SGSS. Produced by Outbreak Surveillance Team, PHE

# Case numbers, testing numbers and positivity, Fareham : 01 Sep to 27 Dec 2020



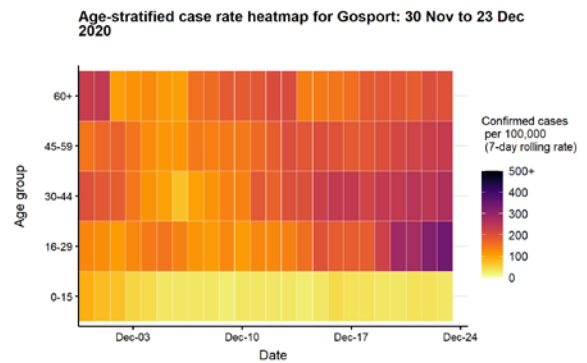
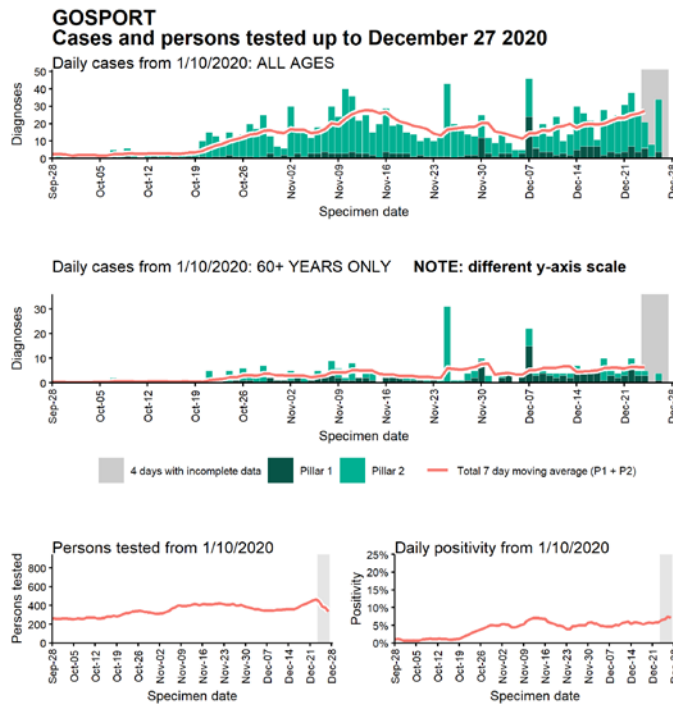
Data from SGSS. Produced by Outbreak Surveillance Team, PHE

## Case numbers, testing numbers and positivity, Folkestone and Hythe : 01 Sep to 27 Dec 2020



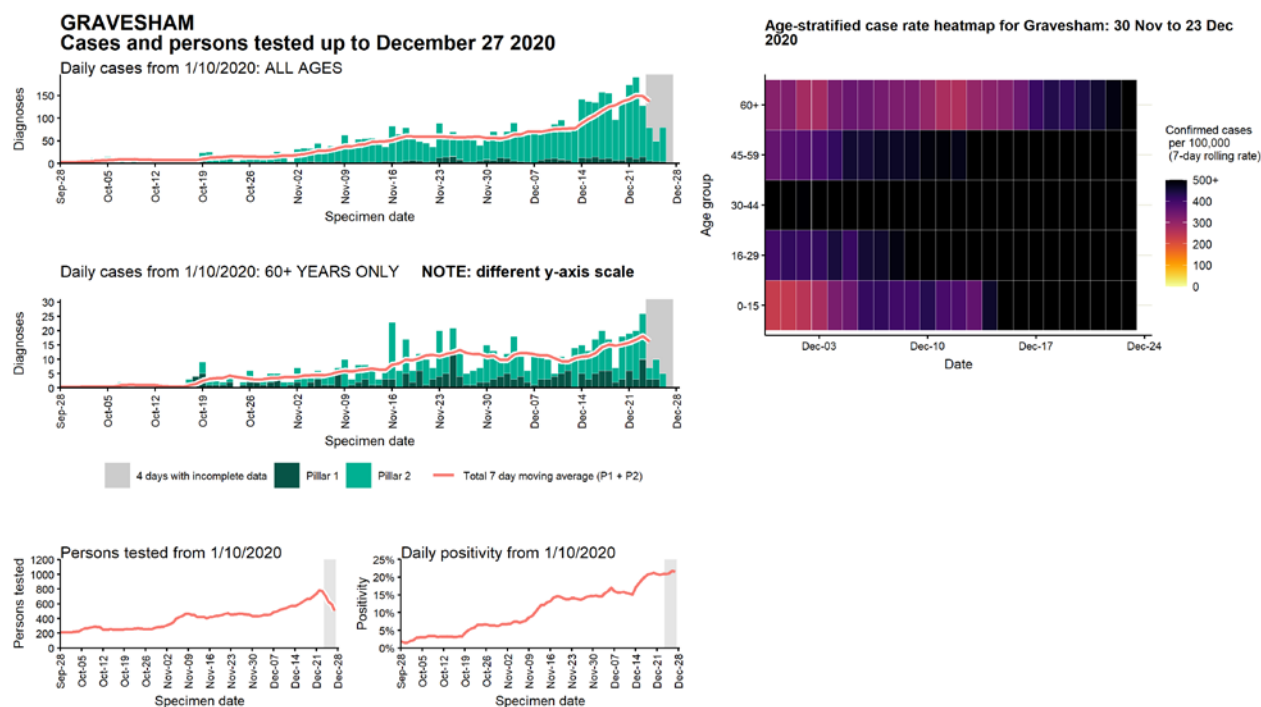
Data from SGSS. Produced by Outbreak Surveillance Team, PHE

## Case numbers, testing numbers and positivity, Gosport : 01 Sep to 27 Dec 2020



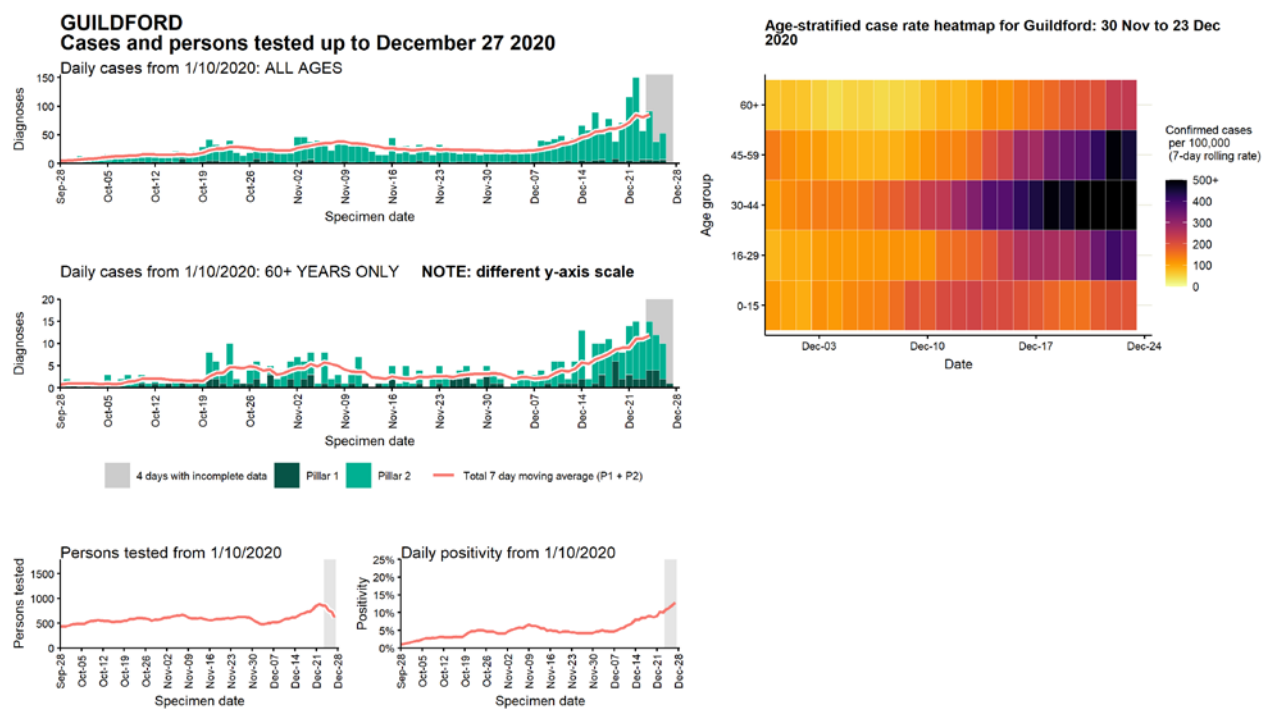
Data from SGSS. Produced by Outbreak Surveillance Team, PHE

Case numbers, testing numbers and positivity, Gravesham : 01 Sep to 27 Dec 2020



Data from SGSS. Produced by Outbreak Surveillance Team, PHE

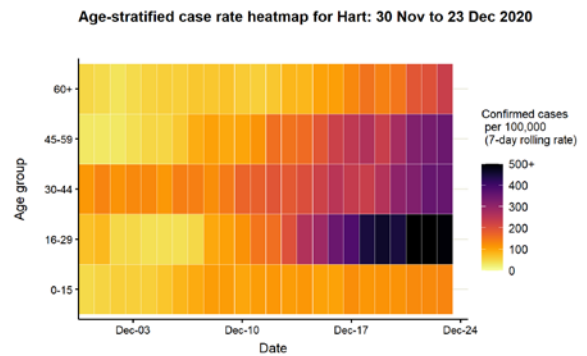
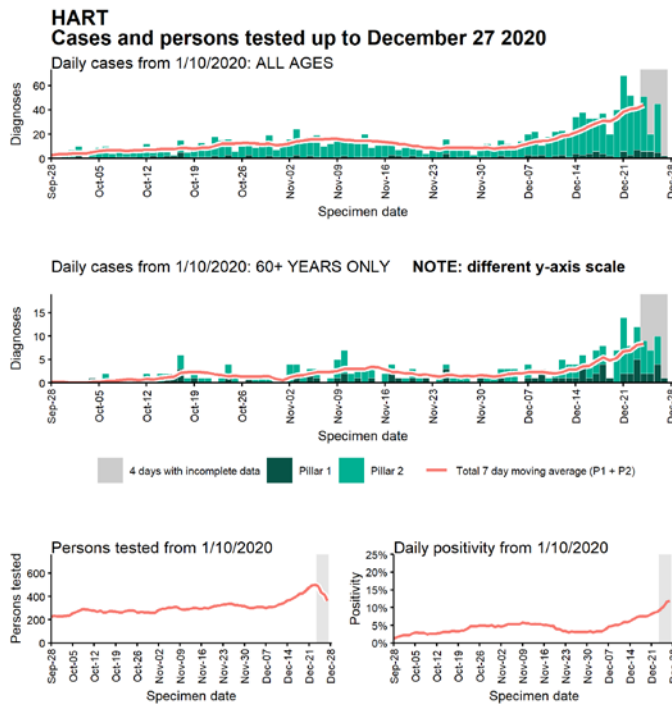
Case numbers, testing numbers and positivity, Guildford : 01 Sep to 27 Dec 2020



Data from SGSS. Produced by Outbreak Surveillance Team, PHE

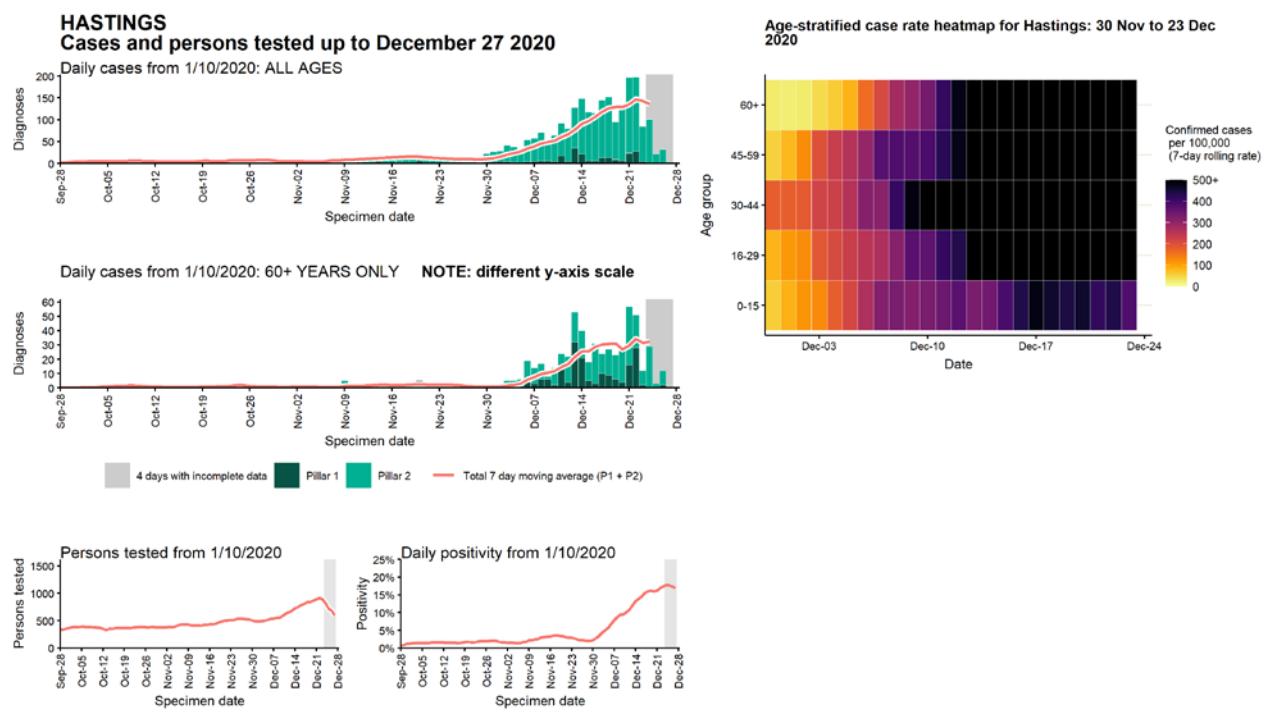


## Case numbers, testing numbers and positivity, Hart : 01 Sep to 27 Dec 2020



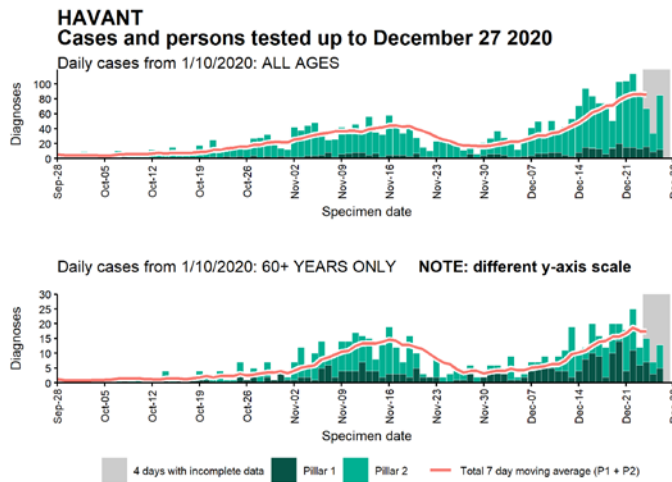
Data from SGSS. Produced by Outbreak Surveillance Team, PHE

Case numbers, testing numbers and positivity, Hastings : 01 Sep to 27 Dec 2020

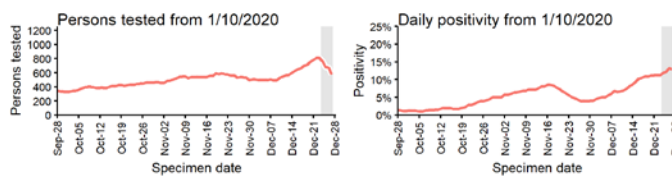
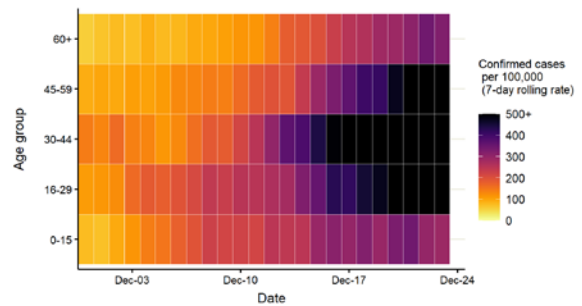


Data from SGSS. Produced by Outbreak Surveillance Team, PHE

## Case numbers, testing numbers and positivity, Havant : 01 Sep to 27 Dec 2020

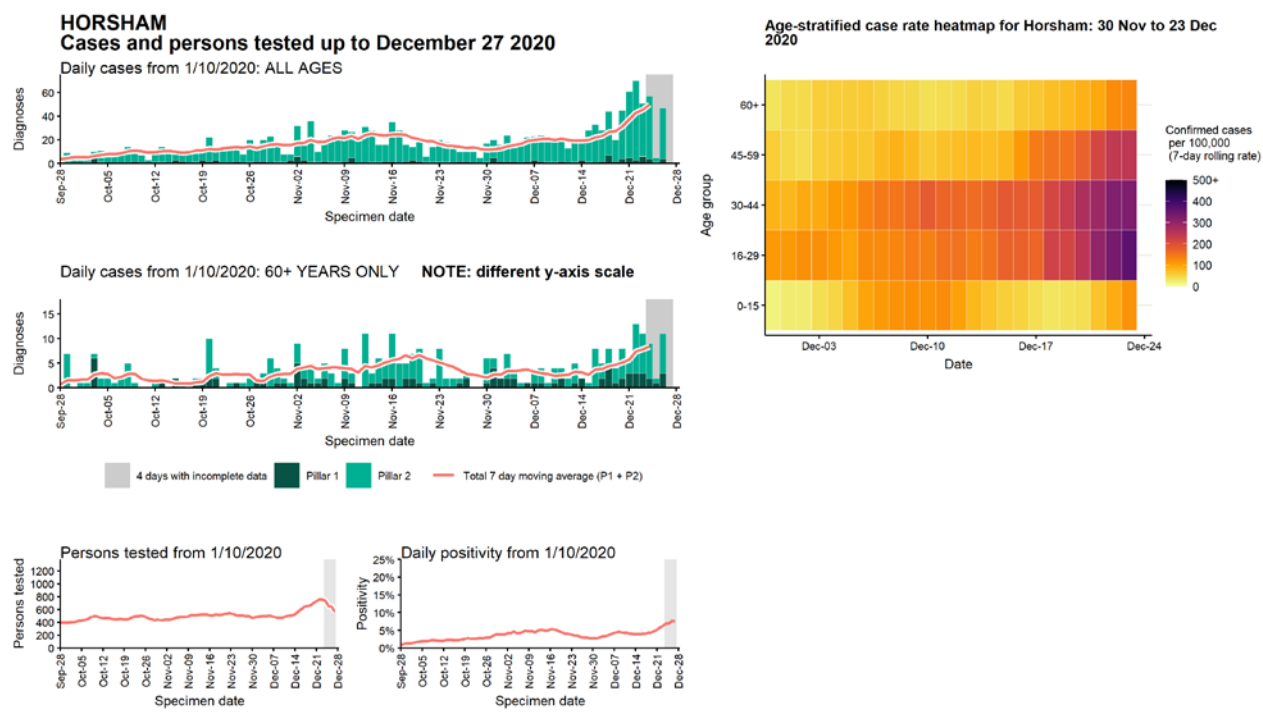


Age-stratified case rate heatmap for Havant: 30 Nov to 23 Dec 2020



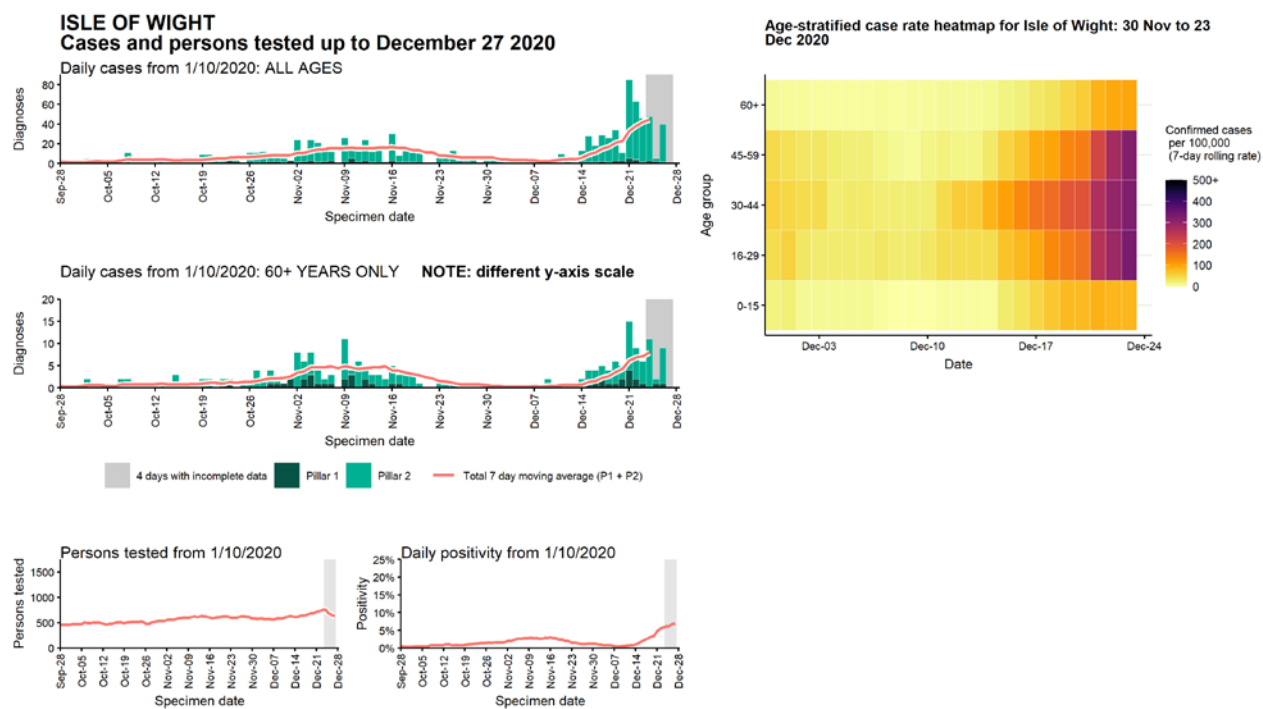
Data from SGSS. Produced by Outbreak Surveillance Team, PHE

# Case numbers, testing numbers and positivity, Horsham : 01 Sep to 27 Dec 2020



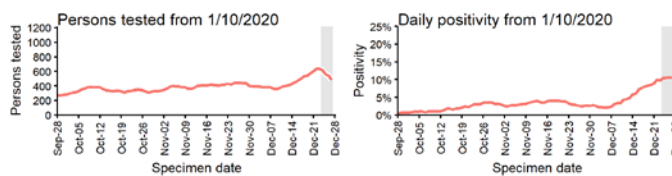
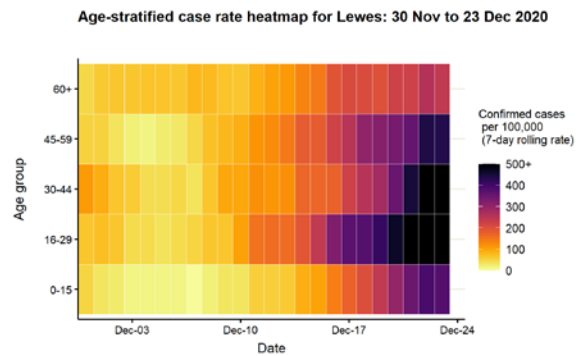
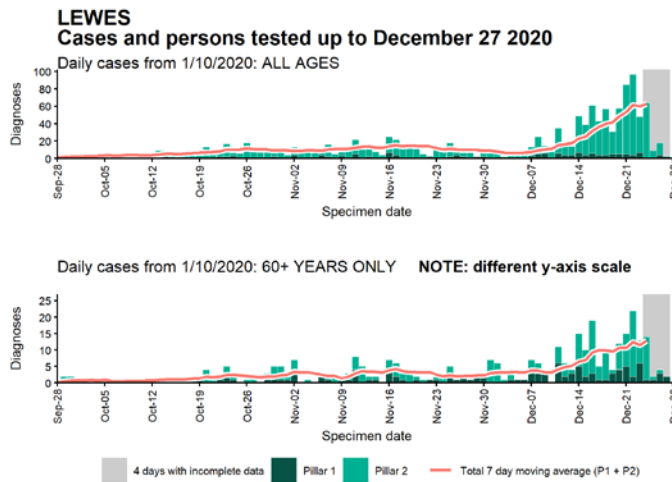
Data from SGSS. Produced by Outbreak Surveillance Team, PHE

Case numbers, testing numbers and positivity, Isle of Wight : 01 Sep to 27 Dec 2020



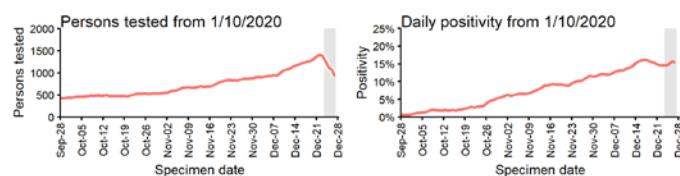
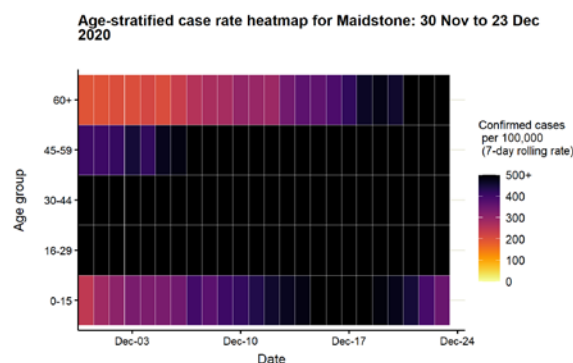
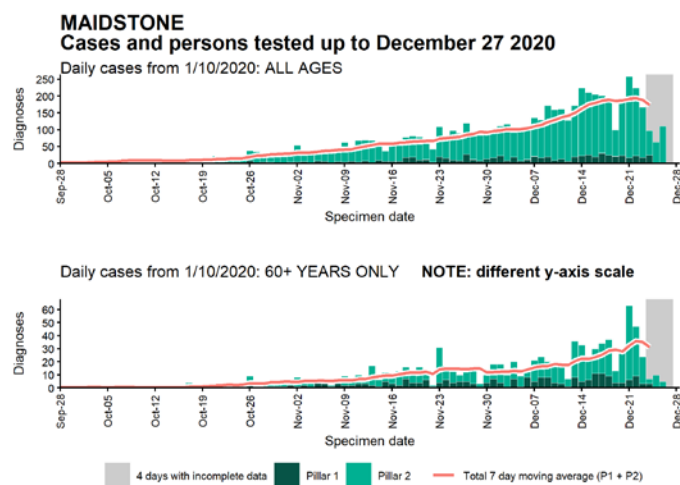
Data from SGSS. Produced by Outbreak Surveillance Team, PHE

## Case numbers, testing numbers and positivity, Lewes : 01 Sep to 27 Dec 2020



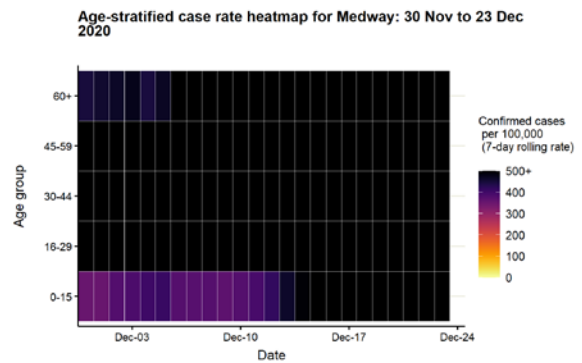
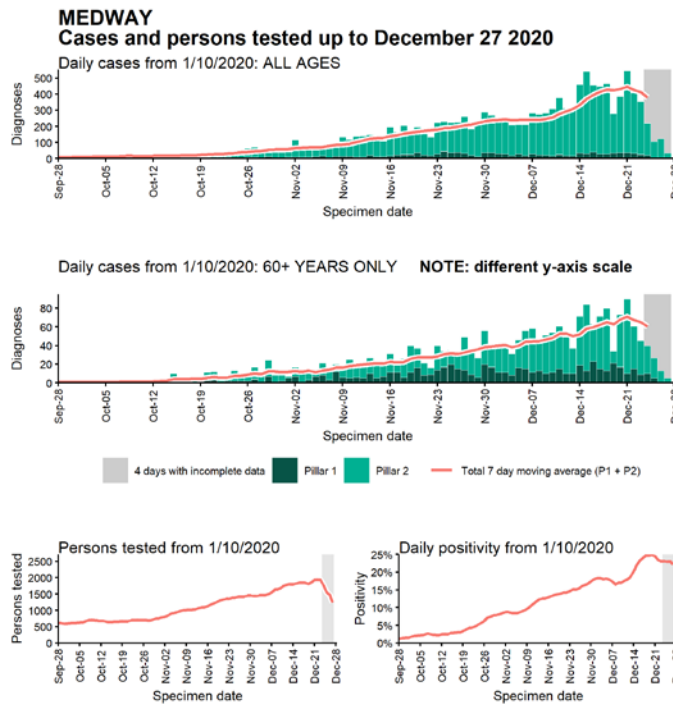
Data from SGSS. Produced by Outbreak Surveillance Team, PHE

Case numbers, testing numbers and positivity, Maidstone : 01 Sep to 27 Dec 2020



Data from SGSS. Produced by Outbreak Surveillance Team, PHE

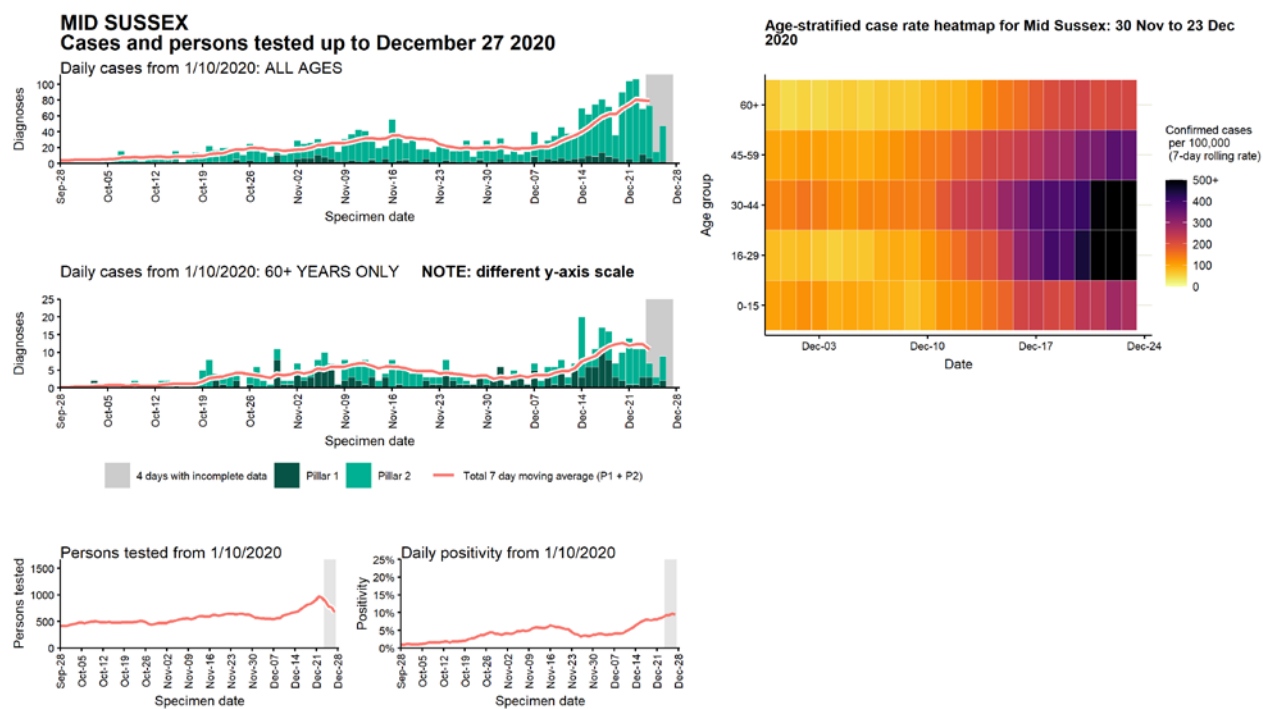
## Case numbers, testing numbers and positivity, Medway : 01 Sep to 27 Dec 2020



Data from SGSS. Produced by Outbreak Surveillance Team, PHE

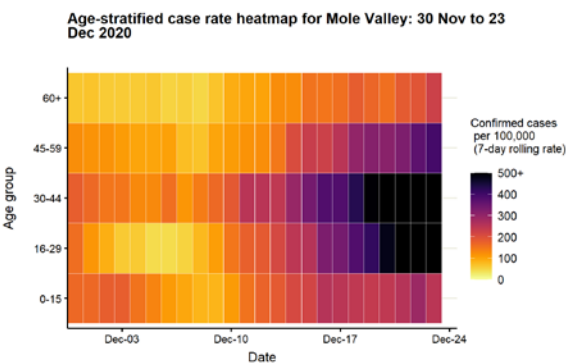
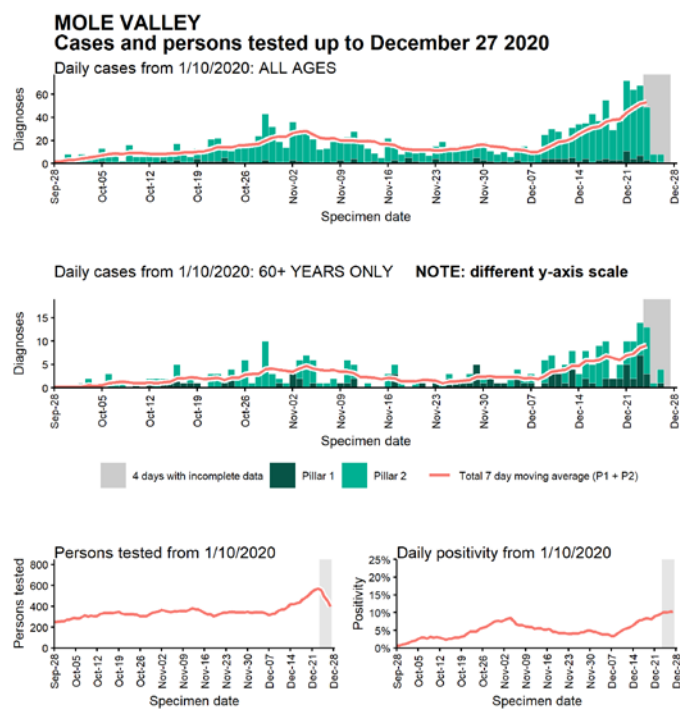


Case numbers, testing numbers and positivity, Mid Sussex : 01 Sep to 27 Dec 2020



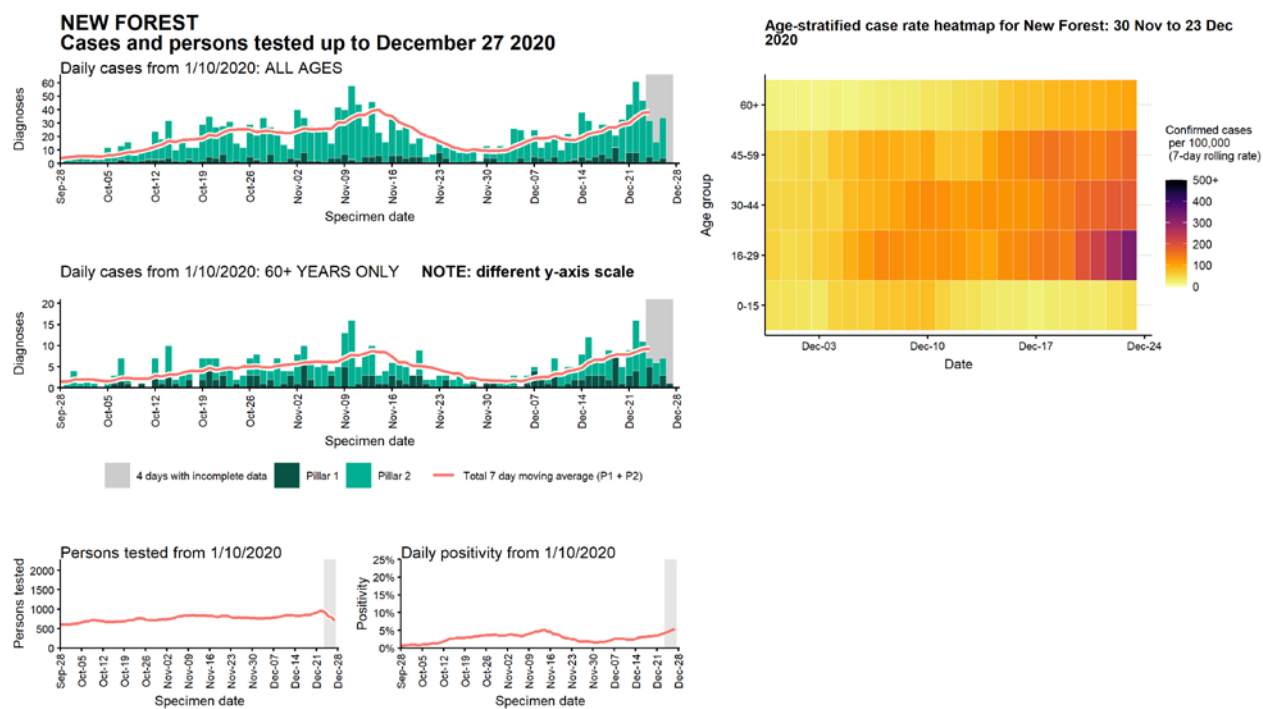
Data from SGSS. Produced by Outbreak Surveillance Team, PHE

# Case numbers, testing numbers and positivity, Mole Valley : 01 Sep to 27 Dec 2020



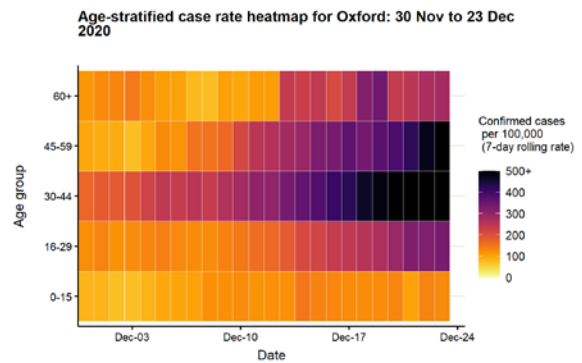
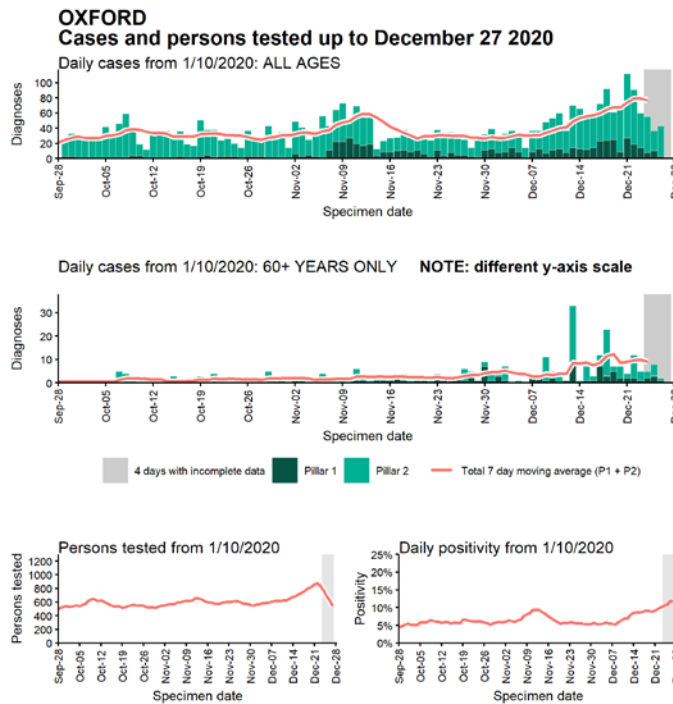
Data from SGSS. Produced by Outbreak Surveillance Team, PHE

# Case numbers, testing numbers and positivity, New Forest : 01 Sep to 27 Dec 2020



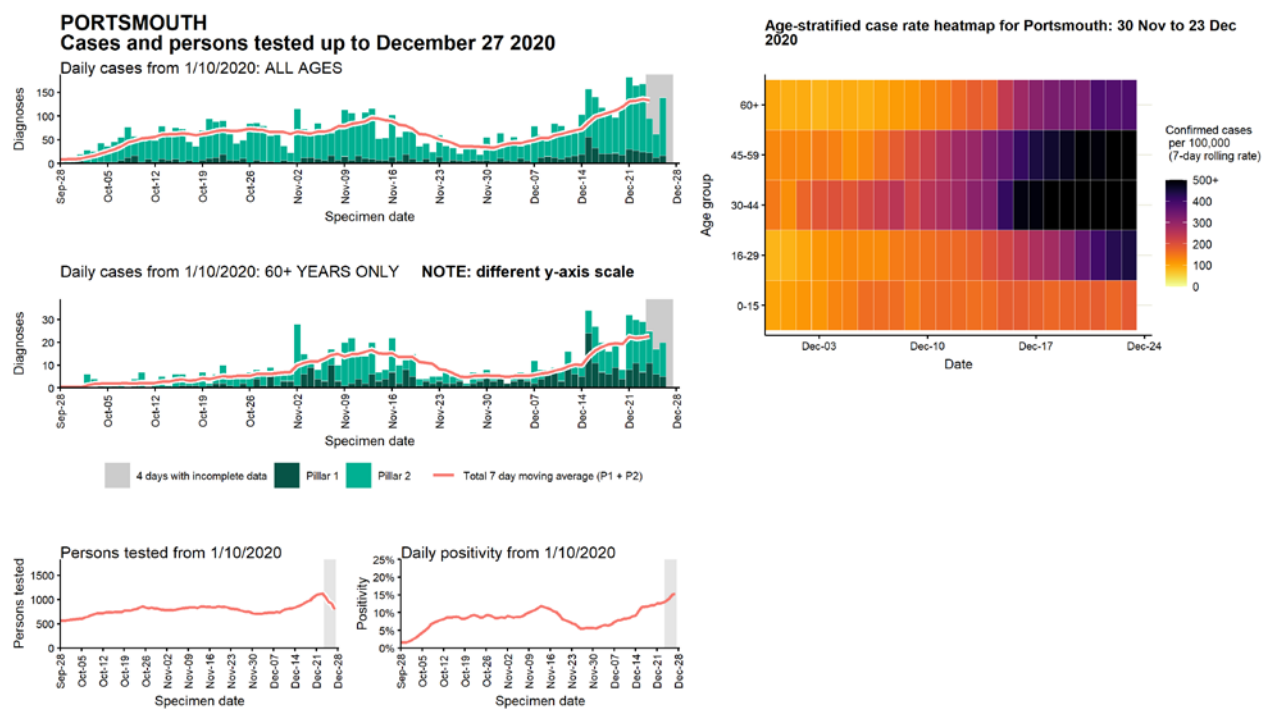
Data from SGSS. Produced by Outbreak Surveillance Team, PHE

## Case numbers, testing numbers and positivity, Oxford : 01 Sep to 27 Dec 2020



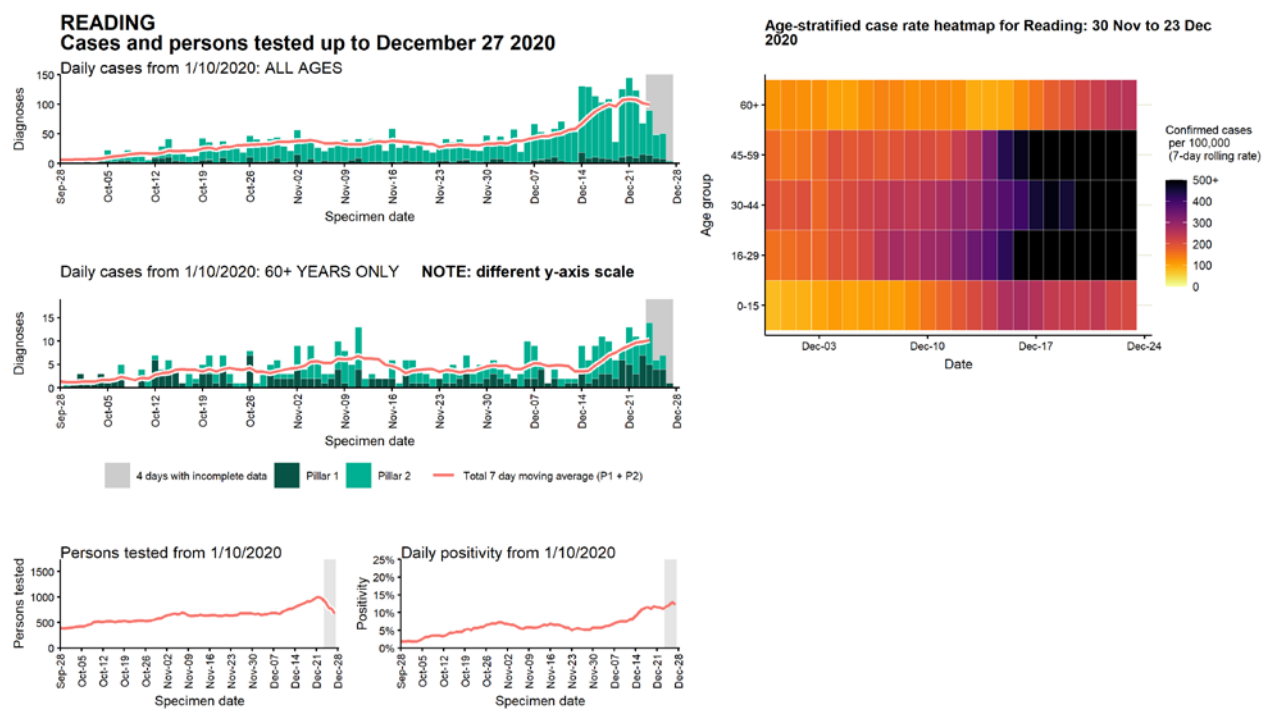
Data from SGSS. Produced by Outbreak Surveillance Team, PHE

# Case numbers, testing numbers and positivity, Portsmouth : 01 Sep to 27 Dec 2020



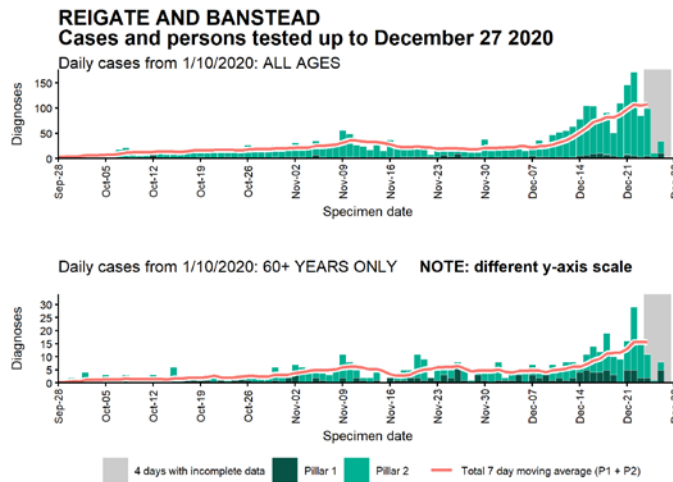
Data from SGSS. Produced by Outbreak Surveillance Team, PHE

# Case numbers, testing numbers and positivity, Reading : 01 Sep to 27 Dec 2020

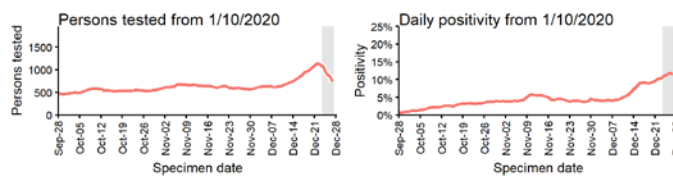
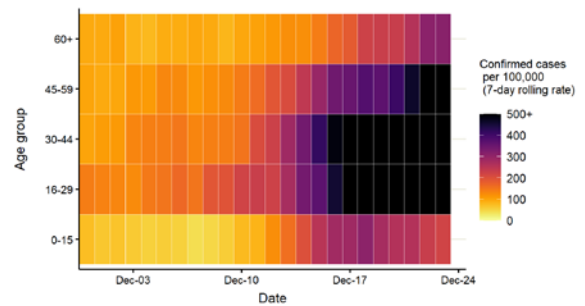


Data from SGSS. Produced by Outbreak Surveillance Team, PHE

## Case numbers, testing numbers and positivity, Reigate and Banstead : 01 Sep to 27 Dec 2020

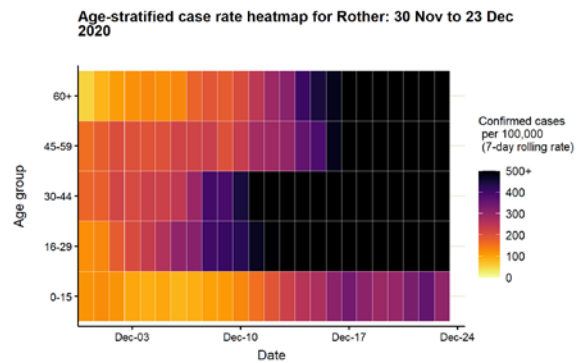
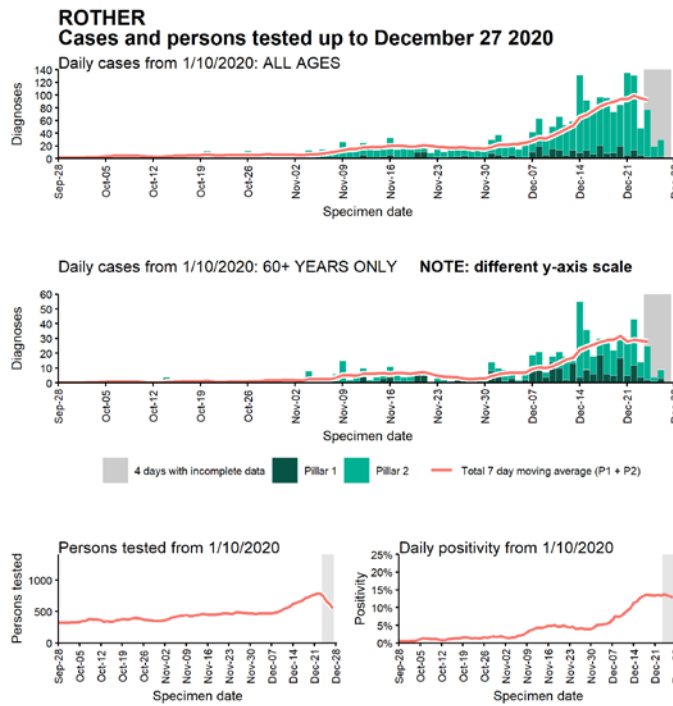


Age-stratified case rate heatmap for Reigate and Banstead: 30 Nov to 23 Dec 2020



Data from SGSS. Produced by Outbreak Surveillance Team, PHE

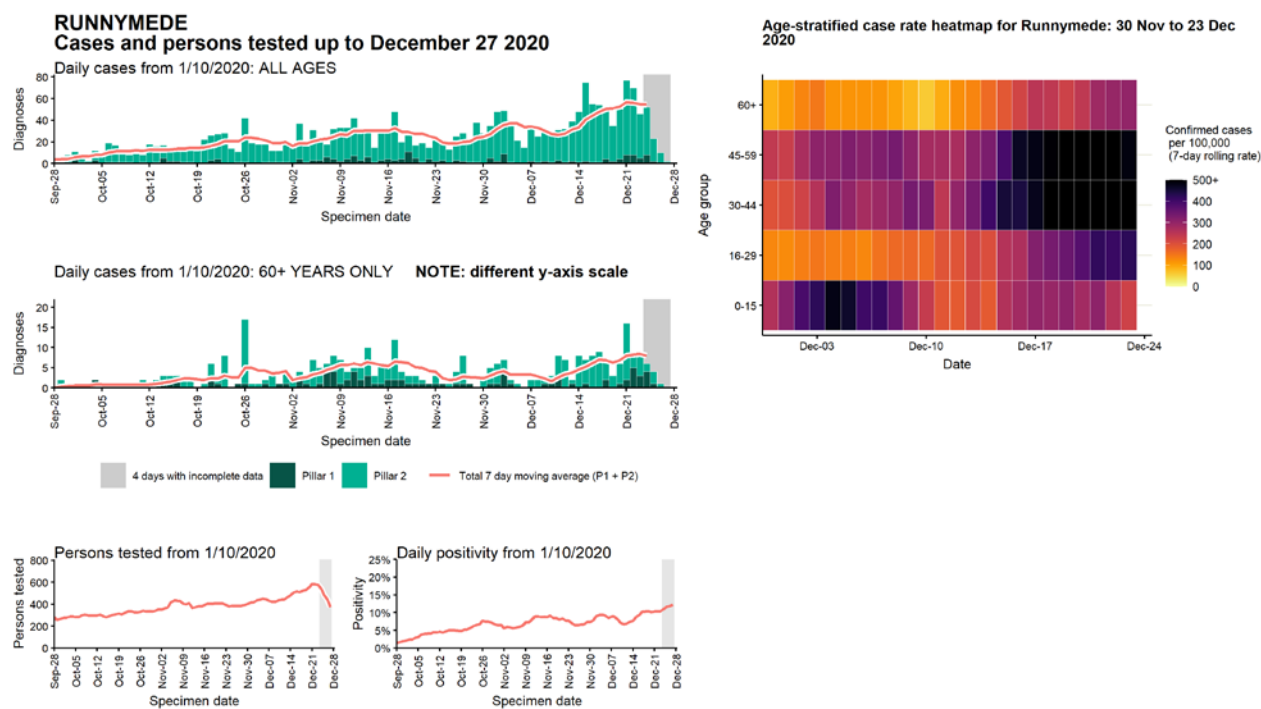
## Case numbers, testing numbers and positivity, Rother : 01 Sep to 27 Dec 2020



Data from SGSS. Produced by Outbreak Surveillance Team, PHE

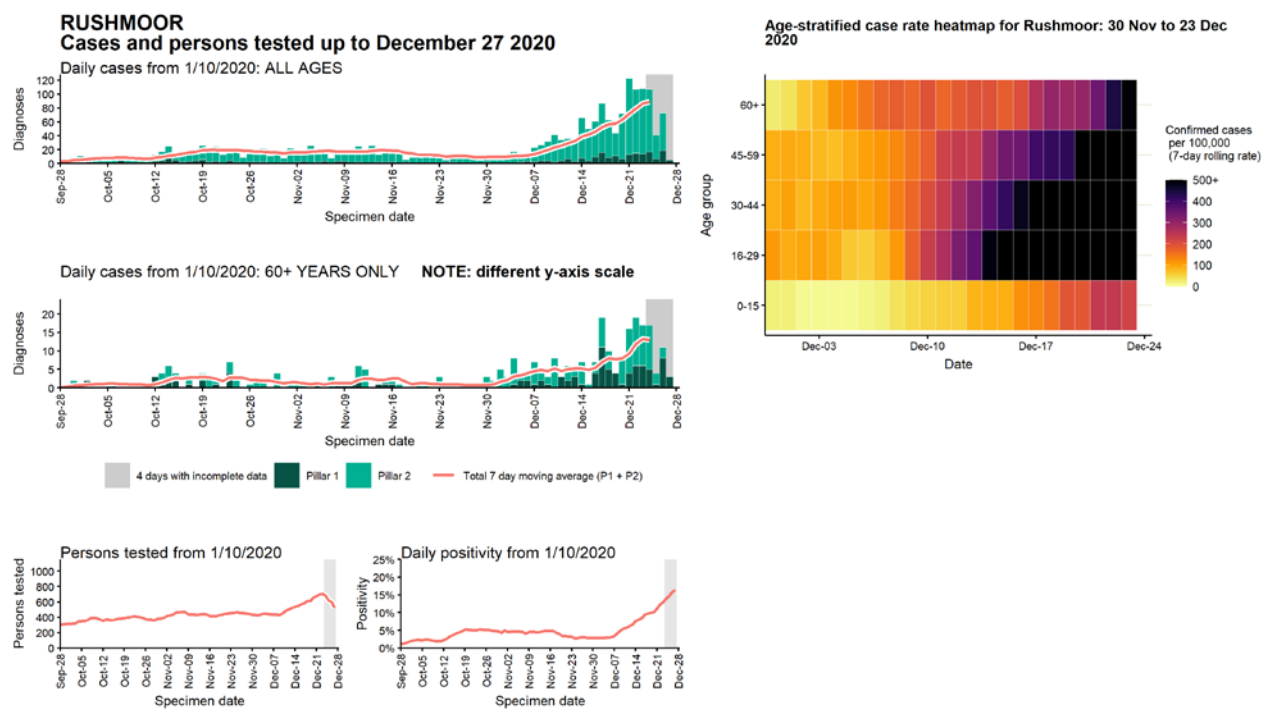


Case numbers, testing numbers and positivity, Runnymede : 01 Sep to 27 Dec 2020



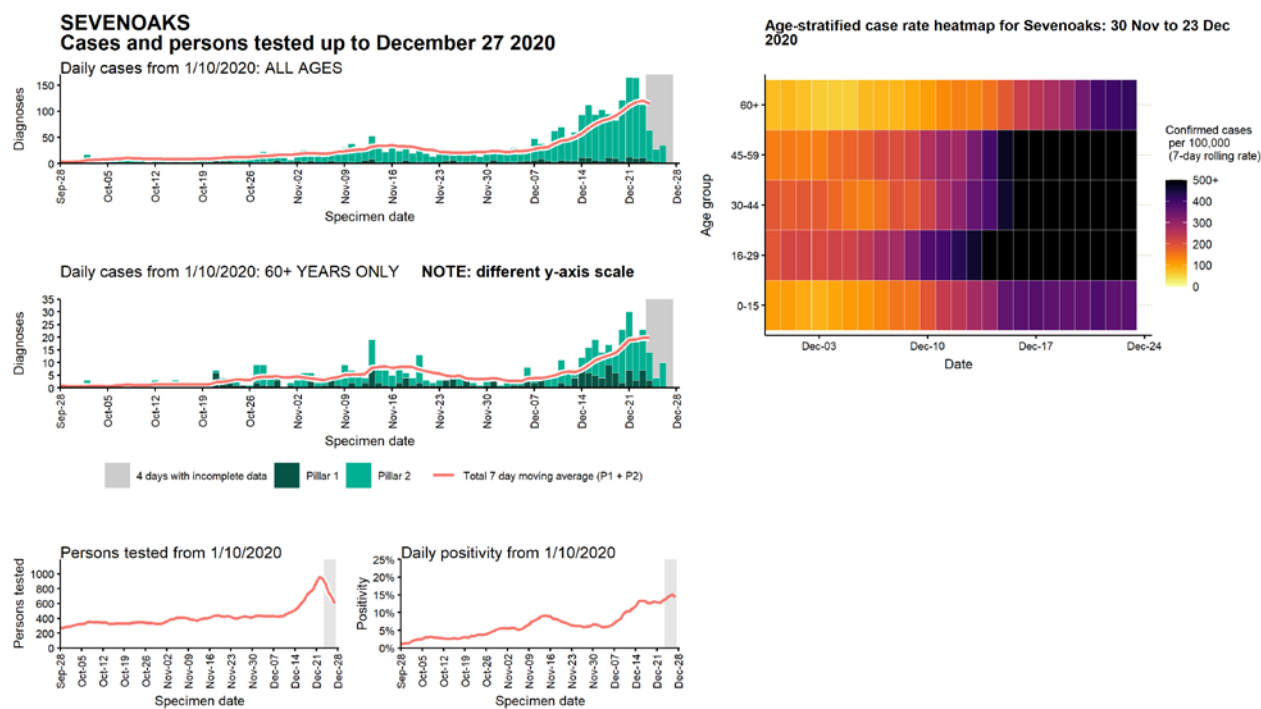
Data from SGSS. Produced by Outbreak Surveillance Team, PHE

Case numbers, testing numbers and positivity, Rushmoor : 01 Sep to 27 Dec 2020



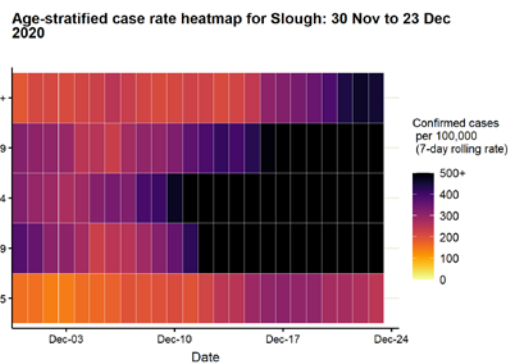
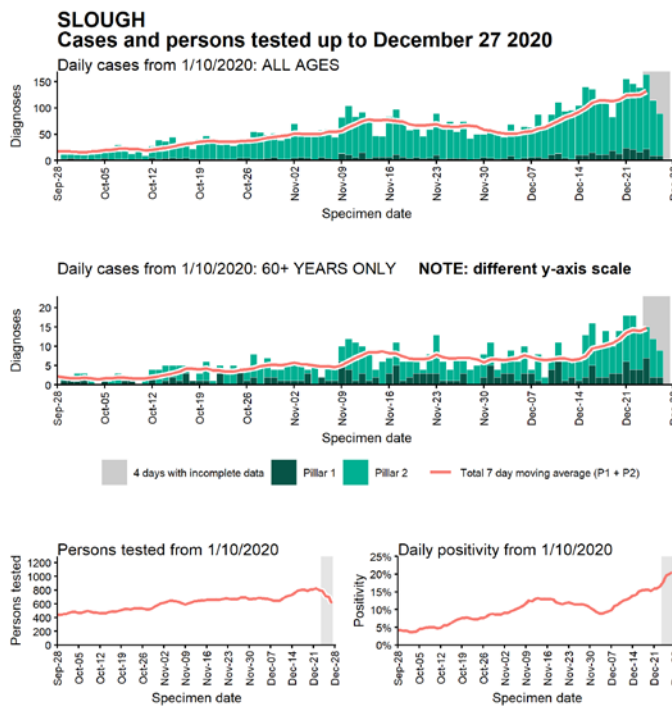
Data from SGSS. Produced by Outbreak Surveillance Team, PHE

# Case numbers, testing numbers and positivity, Sevenoaks : 01 Sep to 27 Dec 2020



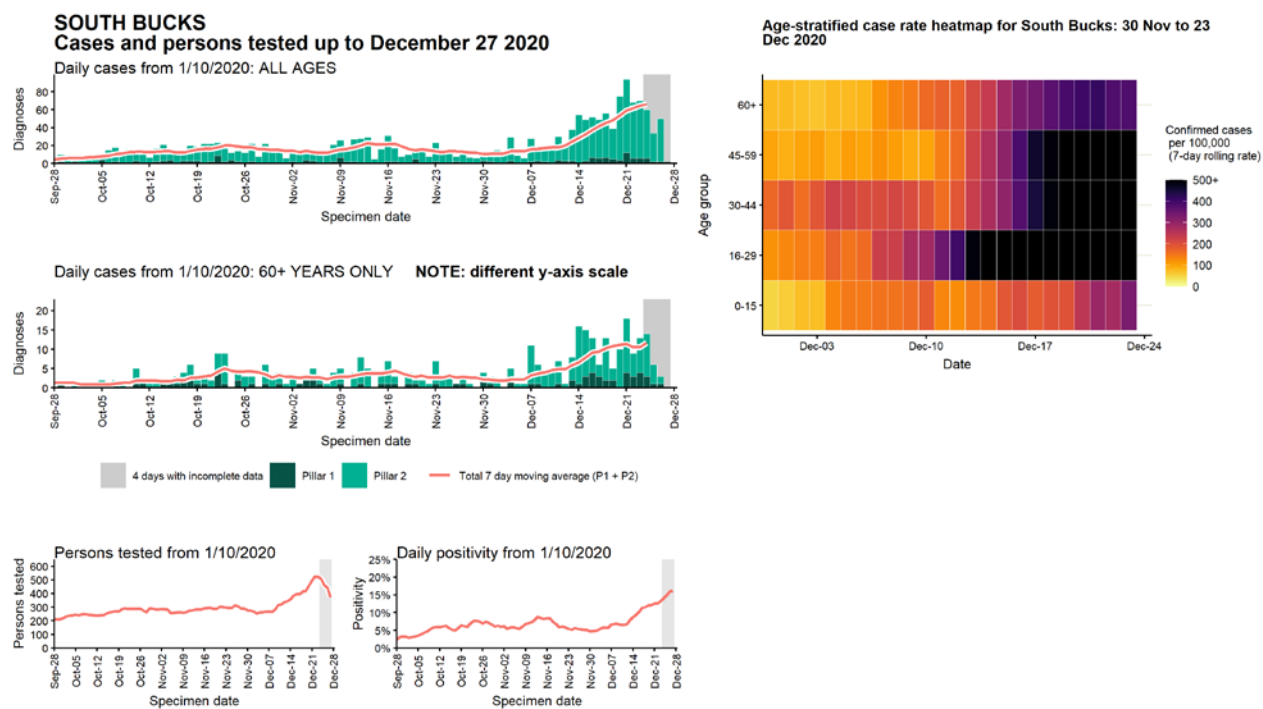
Data from SGSS. Produced by Outbreak Surveillance Team, PHE

## Case numbers, testing numbers and positivity, Slough : 01 Sep to 27 Dec 2020



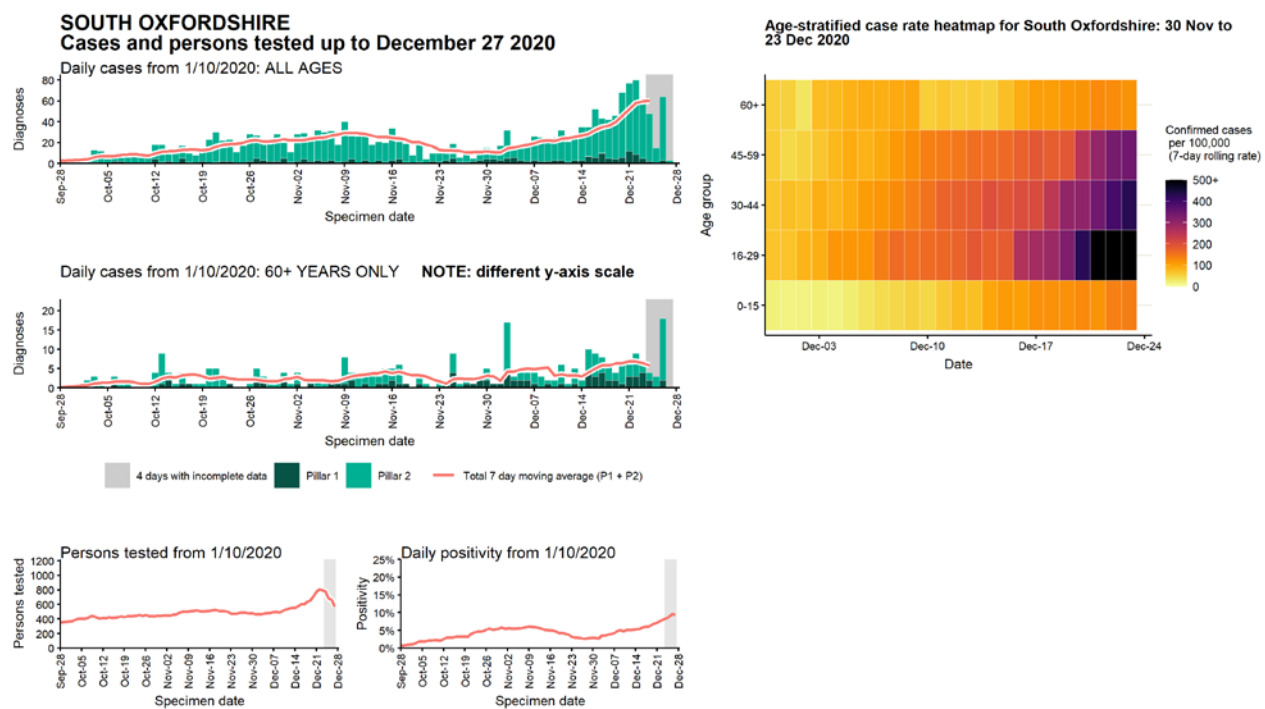
Data from SGSS. Produced by Outbreak Surveillance Team, PHE

Case numbers, testing numbers and positivity, South Bucks : 01 Sep to 27 Dec 2020



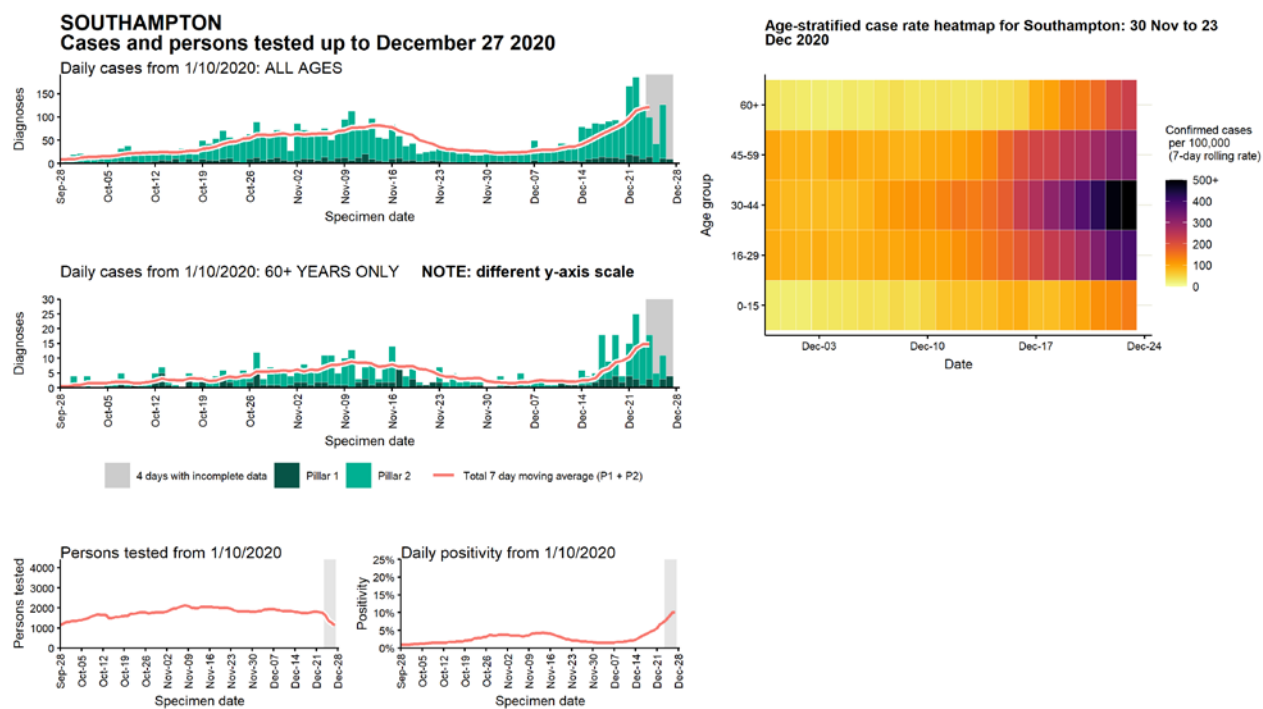
Data from SGSS. Produced by Outbreak Surveillance Team, PHE

Case numbers, testing numbers and positivity, South Oxfordshire :  
01 Sep to 27 Dec 2020



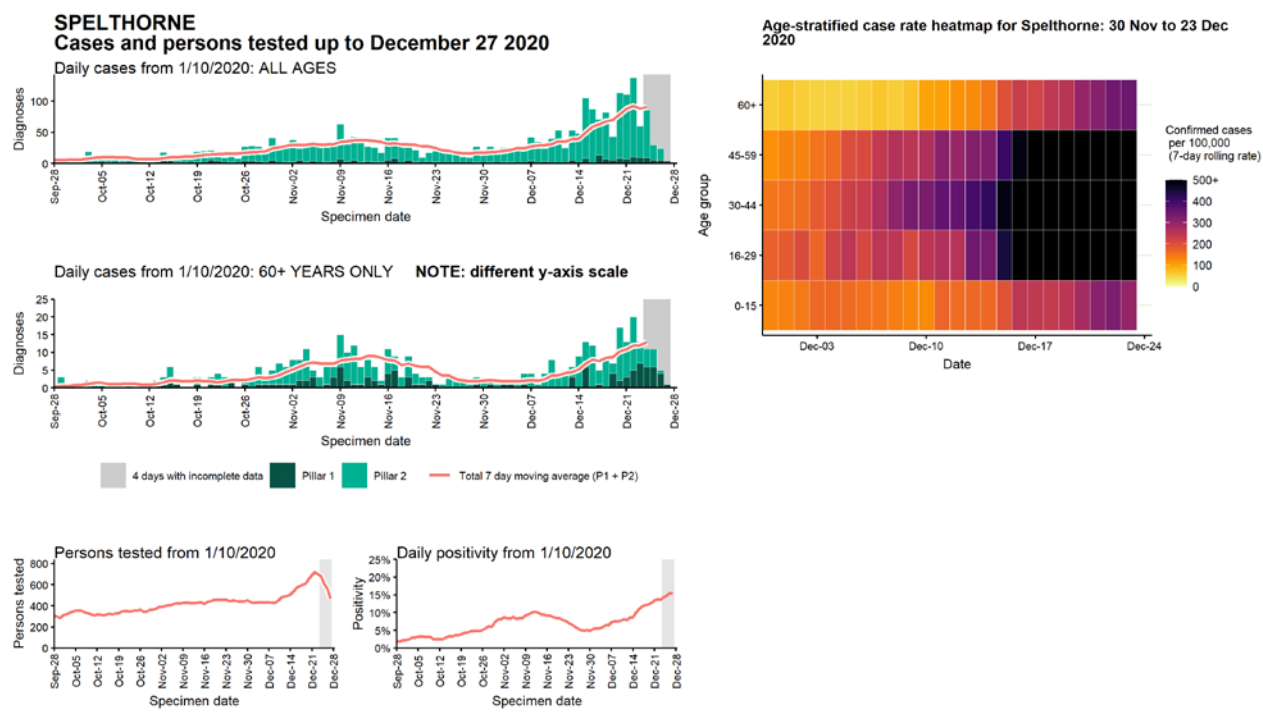
Data from SGSS. Produced by Outbreak Surveillance Team, PHE

Case numbers, testing numbers and positivity, Southampton : 01 Sep to 27 Dec 2020



Data from SGSS. Produced by Outbreak Surveillance Team, PHE

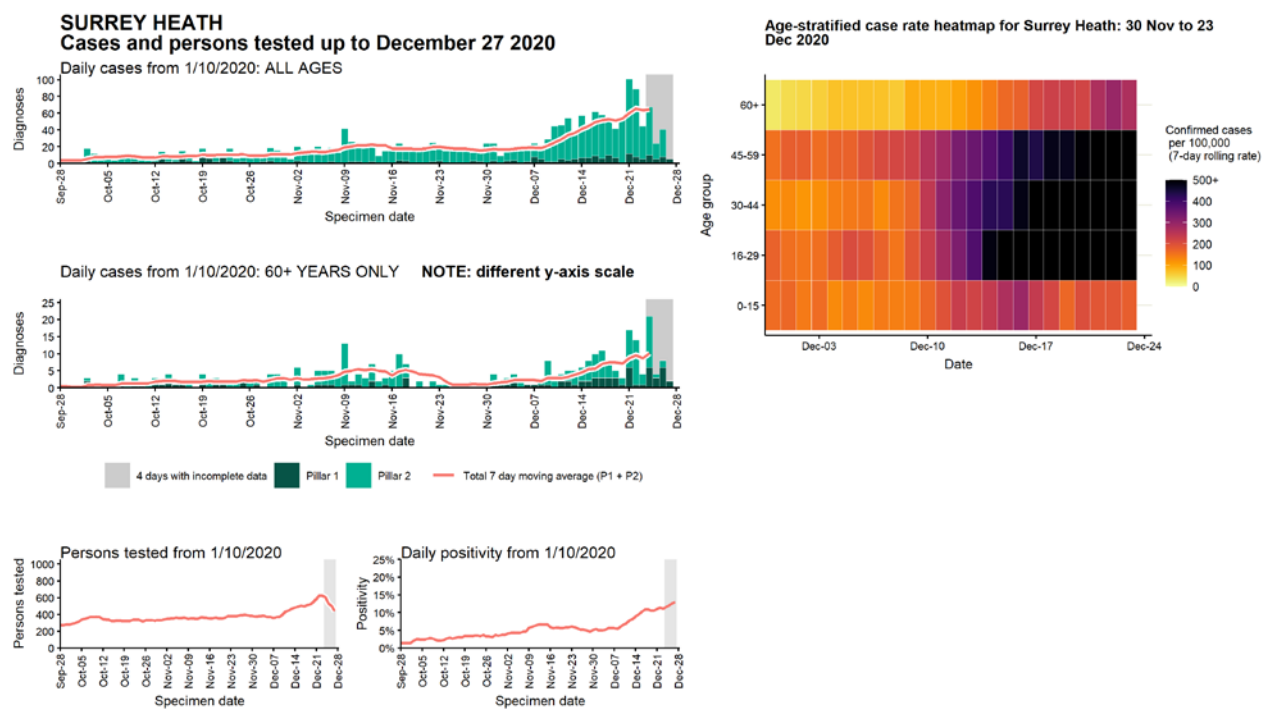
# Case numbers, testing numbers and positivity, Spelthorne : 01 Sep to 27 Dec 2020



Data from SGSS. Produced by Outbreak Surveillance Team, PHE

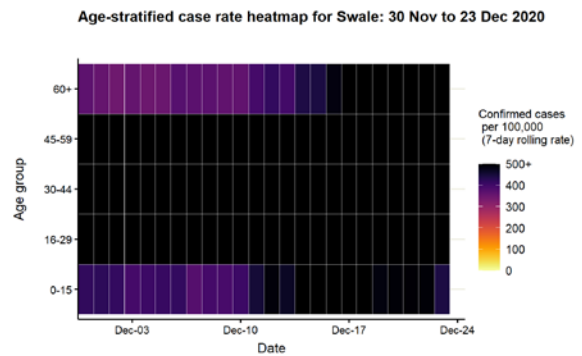
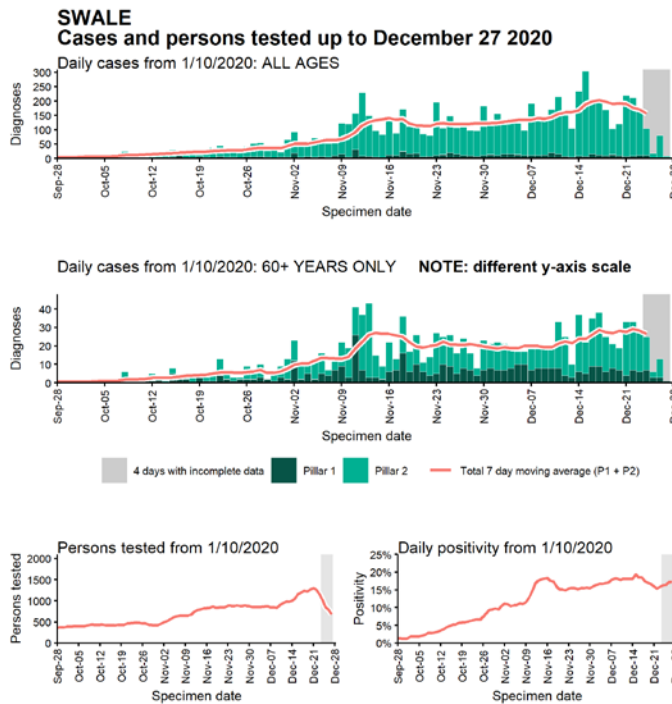


# Case numbers, testing numbers and positivity, Surrey Heath : 01 Sep to 27 Dec 2020



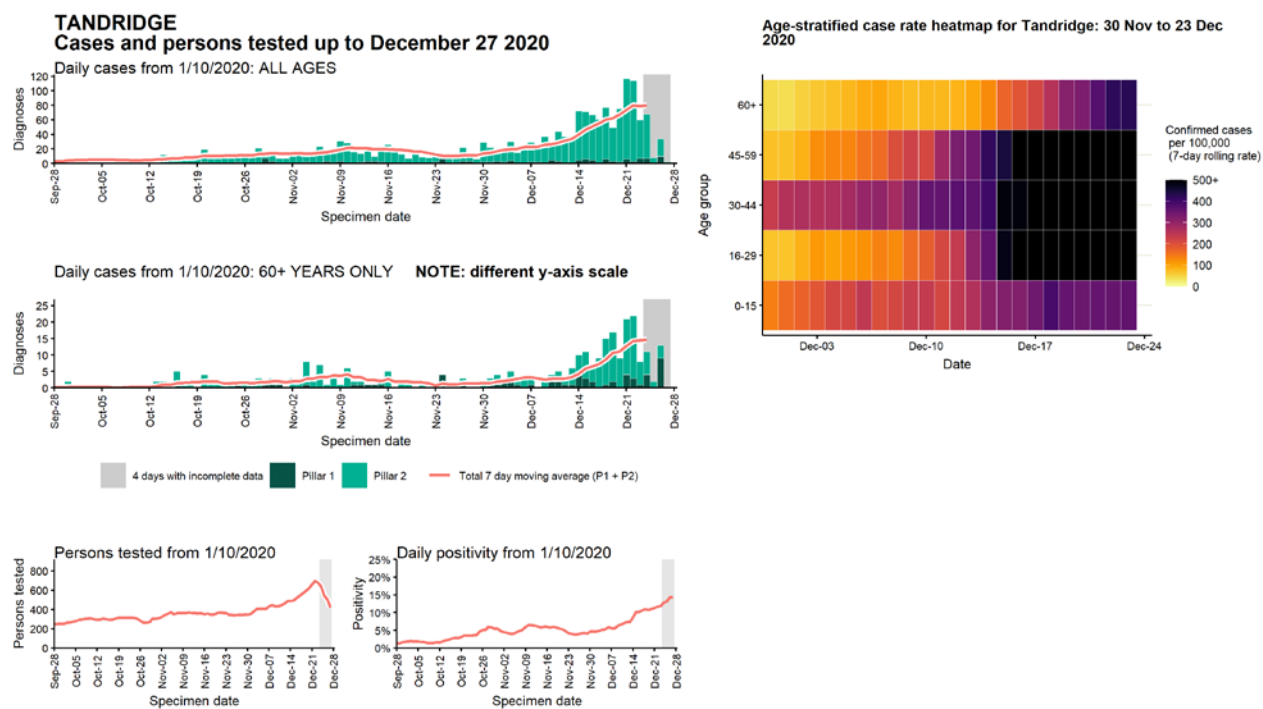
Data from SGSS. Produced by Outbreak Surveillance Team, PHE

## Case numbers, testing numbers and positivity, Swale : 01 Sep to 27 Dec 2020



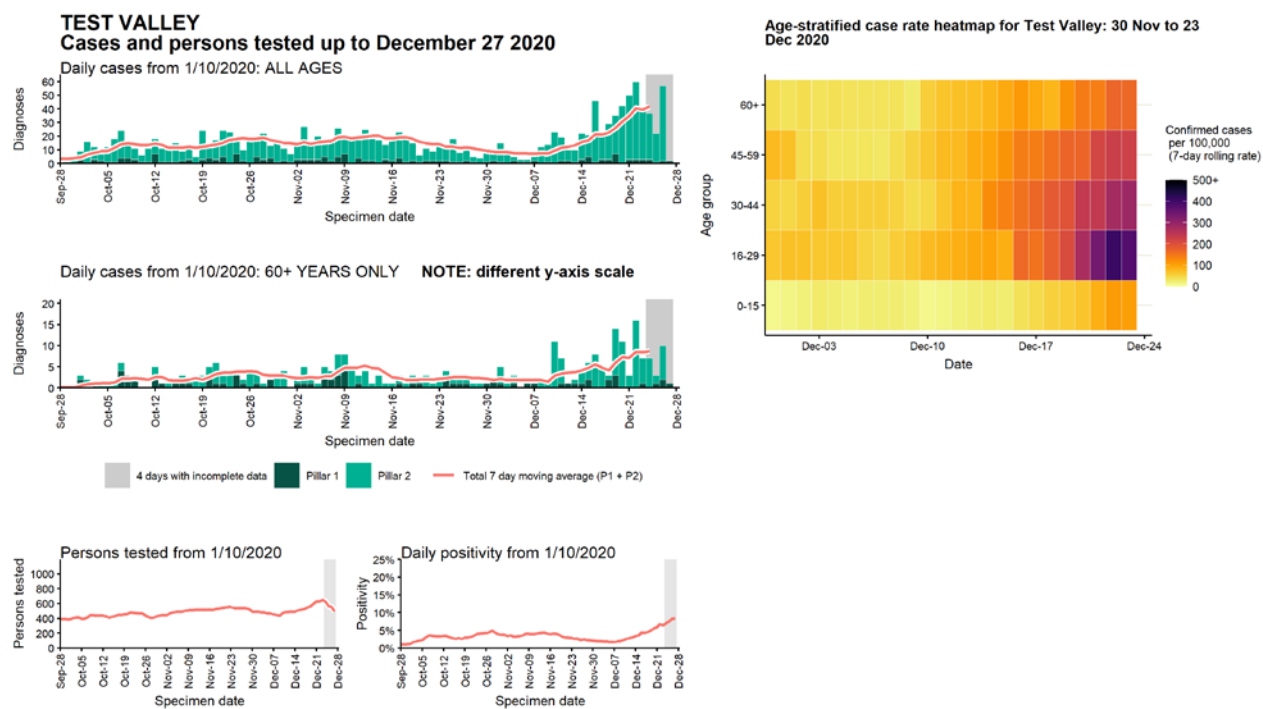
Data from SGSS. Produced by Outbreak Surveillance Team, PHE

# Case numbers, testing numbers and positivity, Tandridge : 01 Sep to 27 Dec 2020



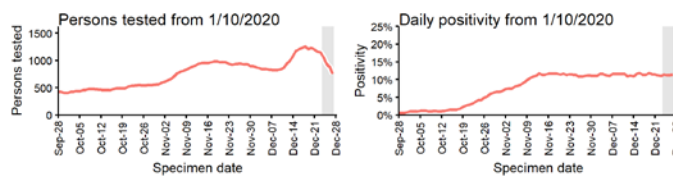
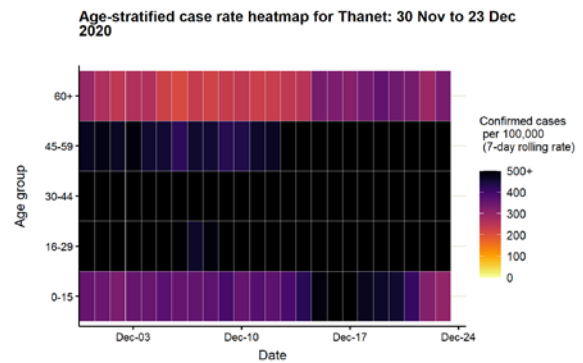
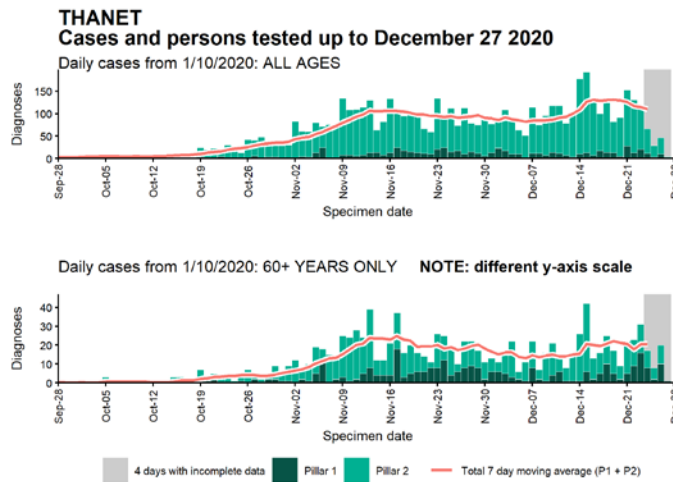
Data from SGSS. Produced by Outbreak Surveillance Team, PHE

Case numbers, testing numbers and positivity, Test Valley : 01 Sep to 27 Dec 2020



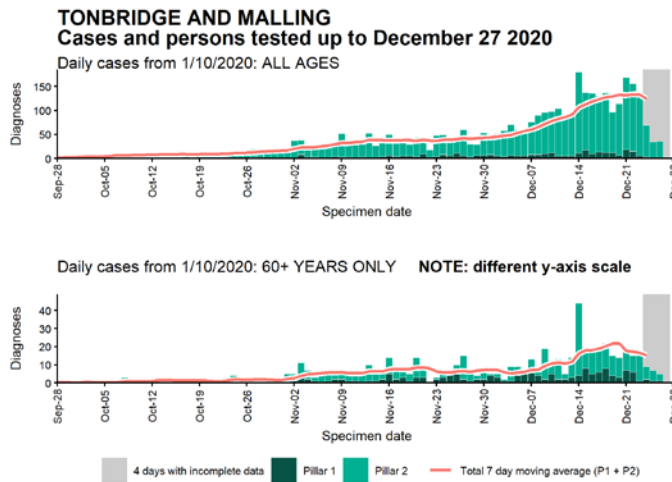
Data from SGSS. Produced by Outbreak Surveillance Team, PHE

## Case numbers, testing numbers and positivity, Thanet : 01 Sep to 27 Dec 2020

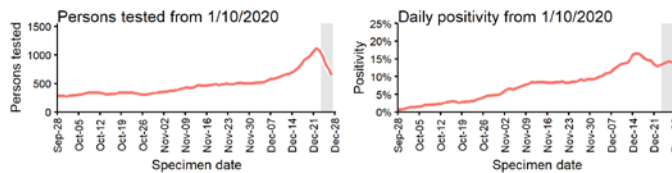
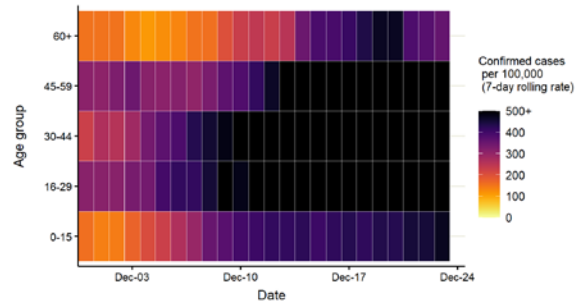


Data from SGSS. Produced by Outbreak Surveillance Team, PHE

## Case numbers, testing numbers and positivity, Tonbridge and Malling : 01 Sep to 27 Dec 2020

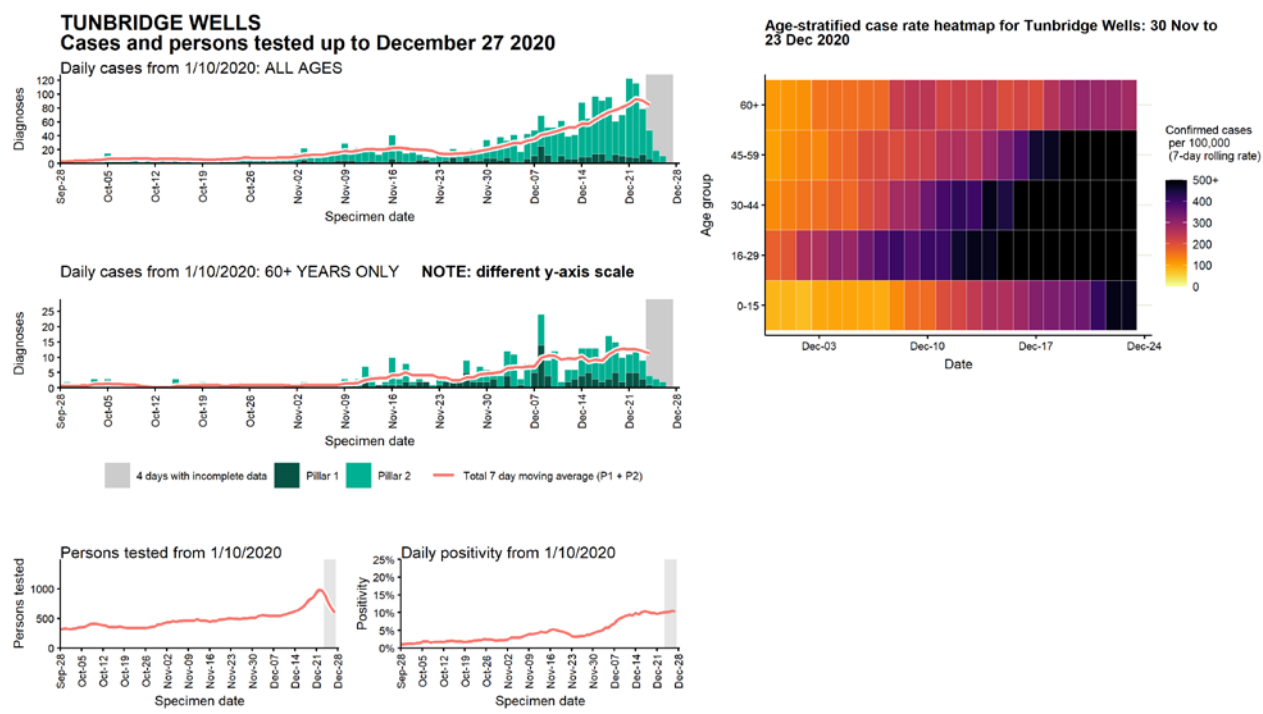


Age-stratified case rate heatmap for Tonbridge and Malling: 30 Nov to 23 Dec 2020



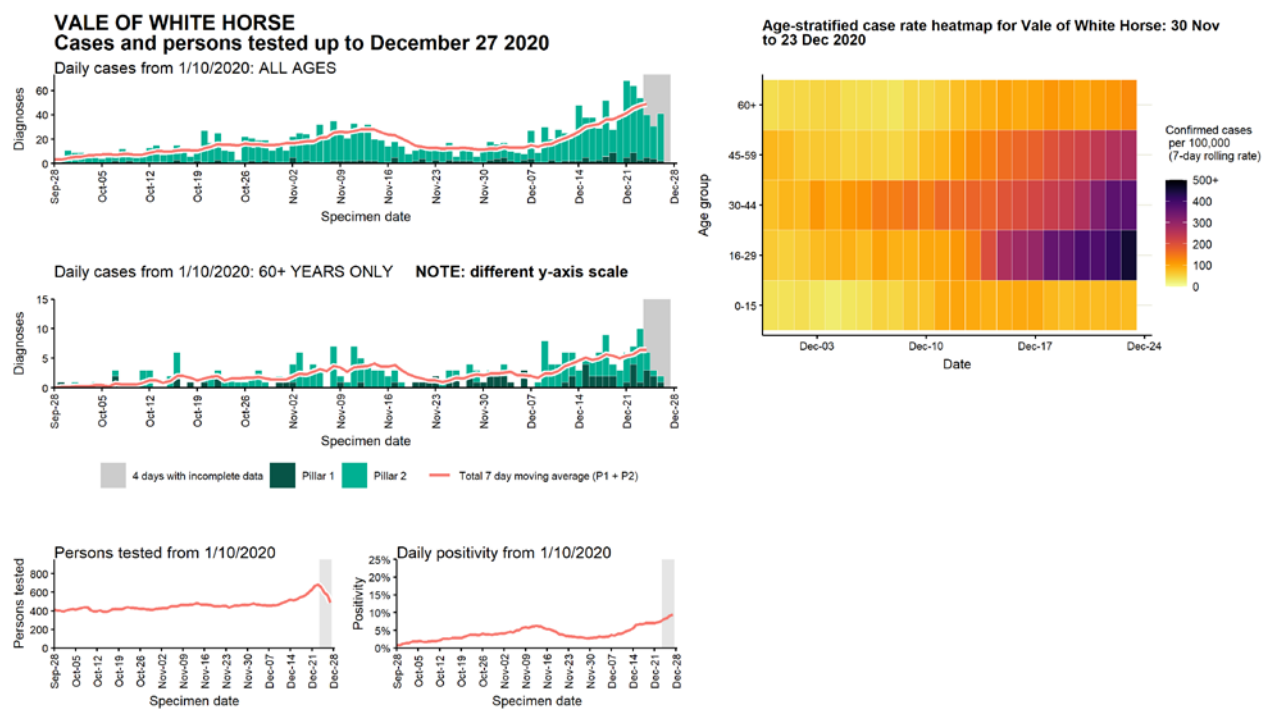
Data from SGSS. Produced by Outbreak Surveillance Team, PHE

# Case numbers, testing numbers and positivity, Tunbridge Wells : 01 Sep to 27 Dec 2020



Data from SGSS. Produced by Outbreak Surveillance Team, PHE

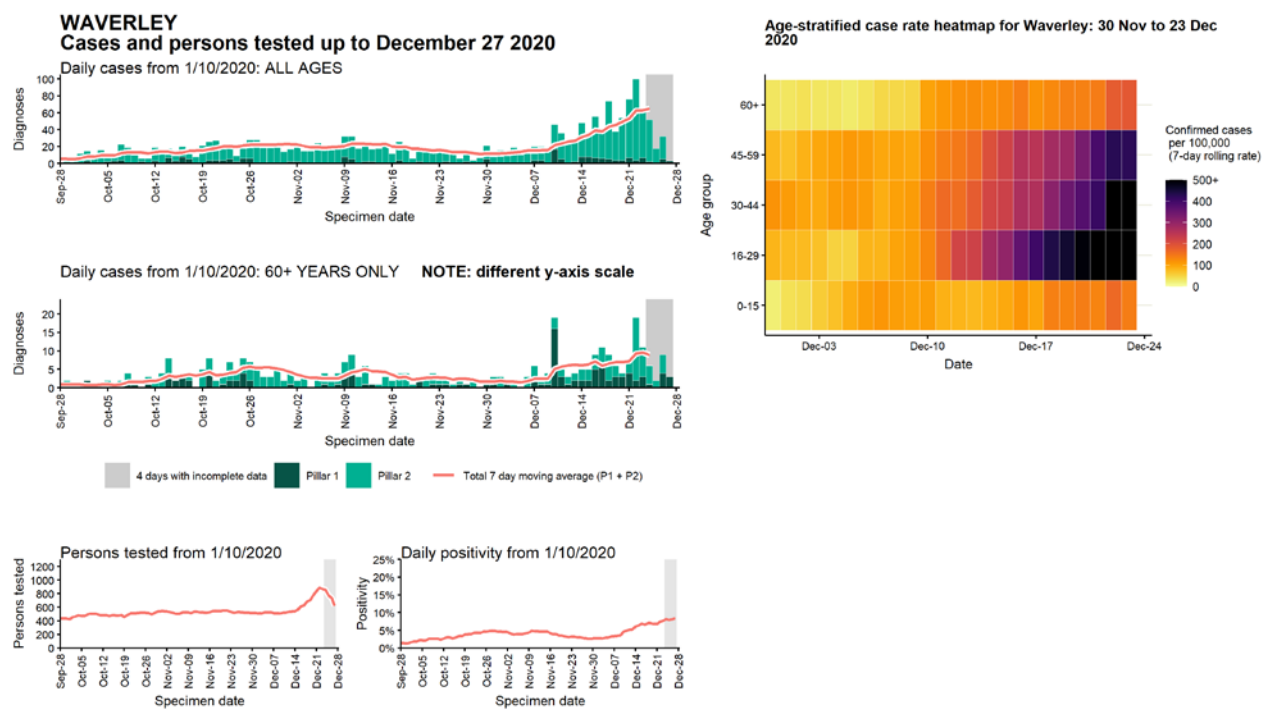
# Case numbers, testing numbers and positivity, Vale of White Horse : 01 Sep to 27 Dec 2020



Data from SGSS. Produced by Outbreak Surveillance Team, PHE

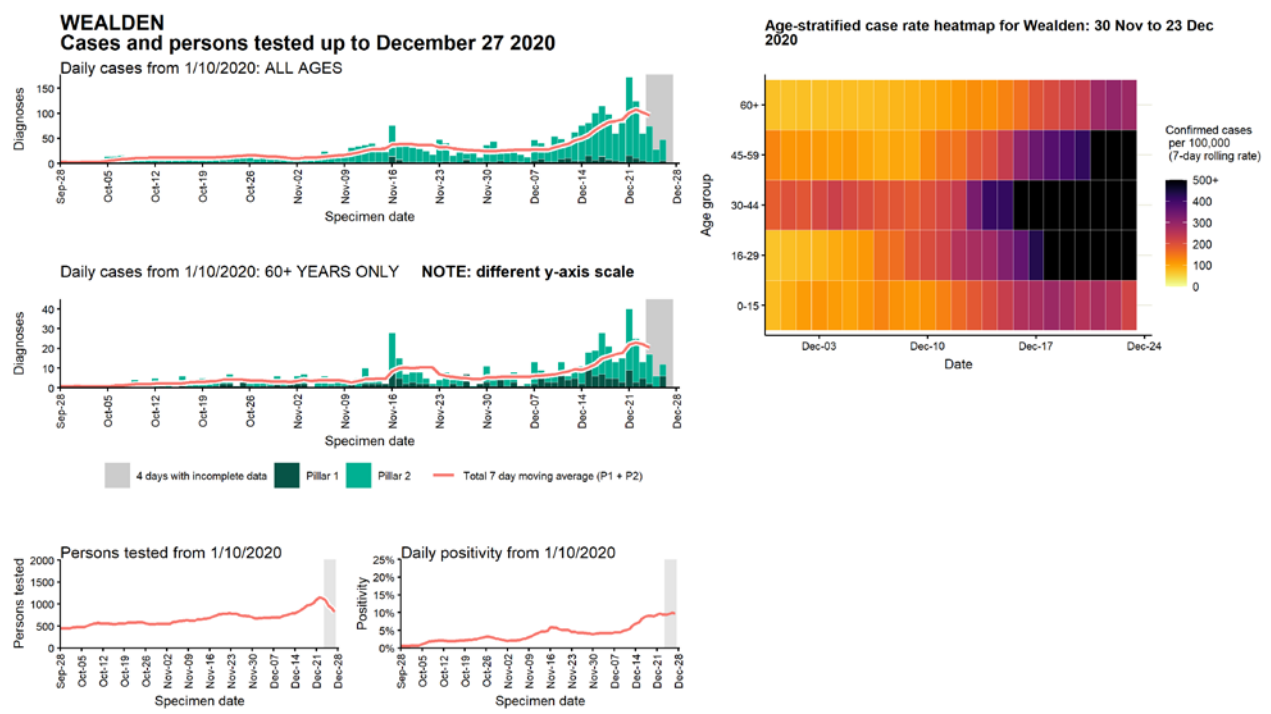


Case numbers, testing numbers and positivity, Waverley : 01 Sep to 27 Dec 2020



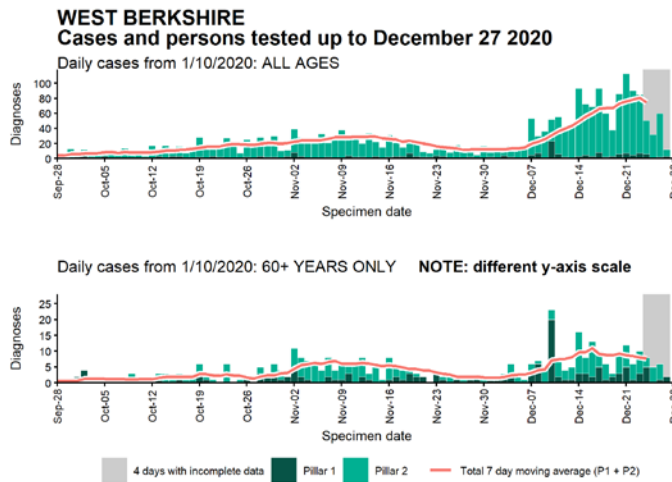
Data from SGSS. Produced by Outbreak Surveillance Team, PHE

# Case numbers, testing numbers and positivity, Wealden : 01 Sep to 27 Dec 2020

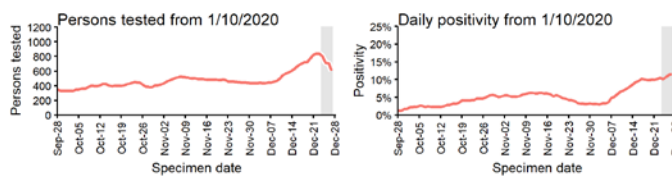
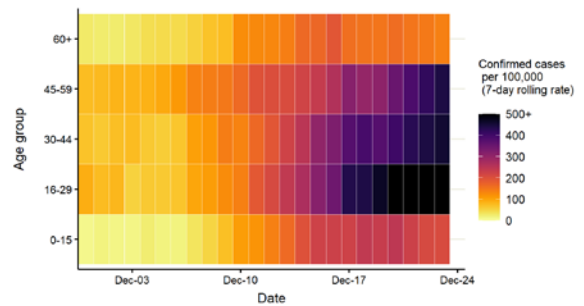


Data from SGSS. Produced by Outbreak Surveillance Team, PHE

## Case numbers, testing numbers and positivity, West Berkshire : 01 Sep to 27 Dec 2020

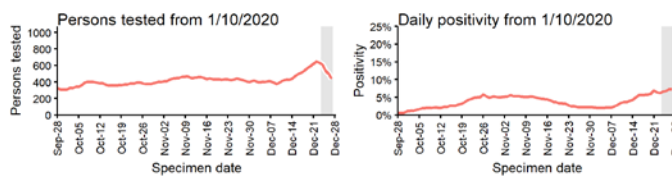
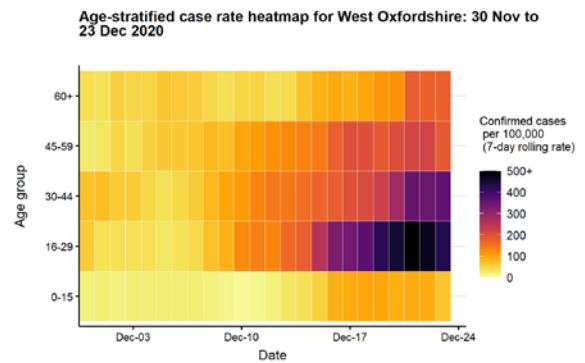
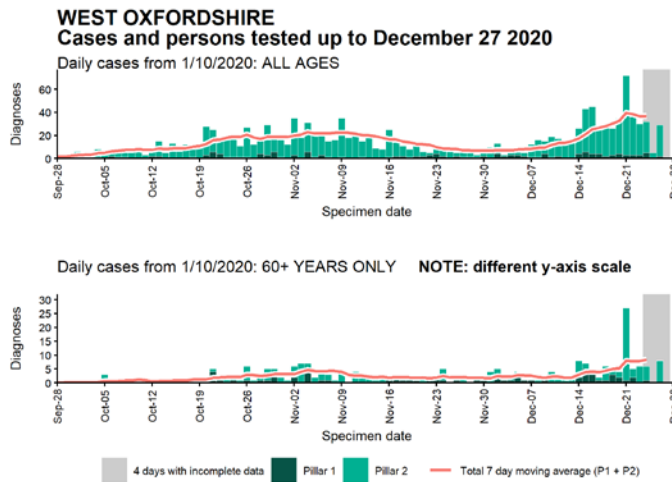


Age-stratified case rate heatmap for West Berkshire: 30 Nov to 23 Dec 2020



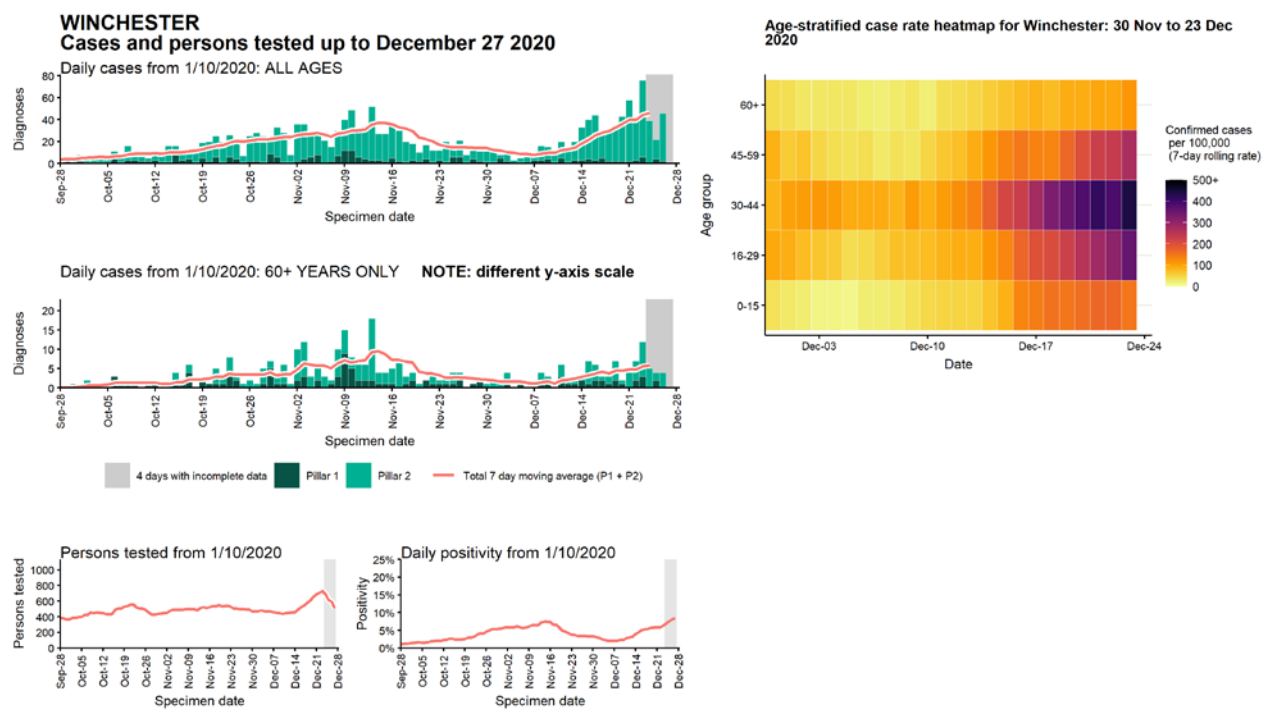
Data from SGSS. Produced by Outbreak Surveillance Team, PHE

## Case numbers, testing numbers and positivity, West Oxfordshire : 01 Sep to 27 Dec 2020



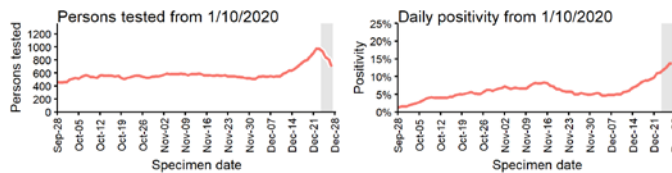
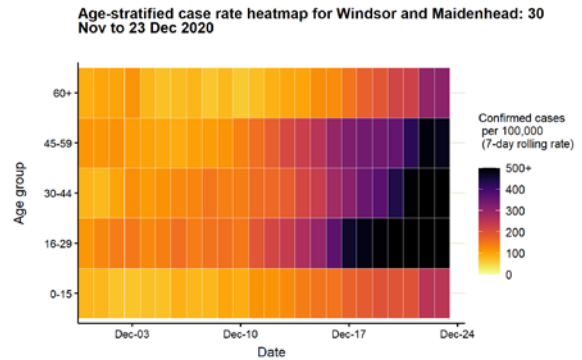
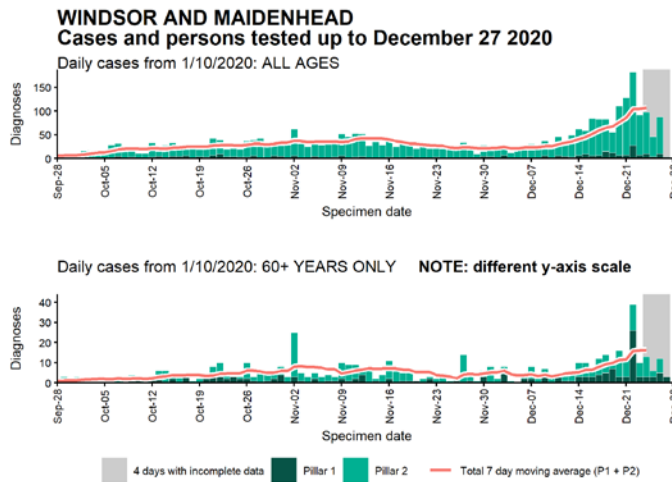
Data from SGSS. Produced by Outbreak Surveillance Team, PHE

Case numbers, testing numbers and positivity, Winchester : 01 Sep to 27 Dec 2020



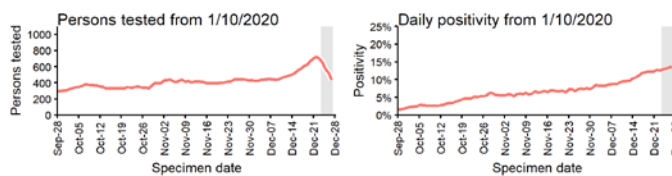
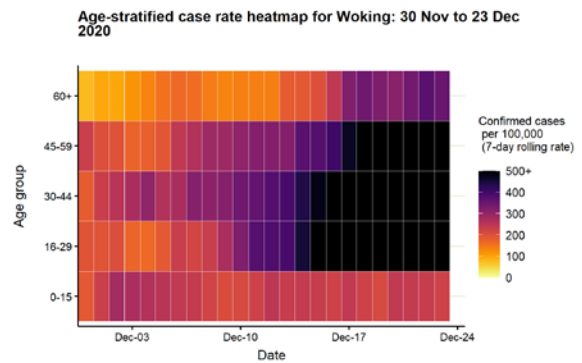
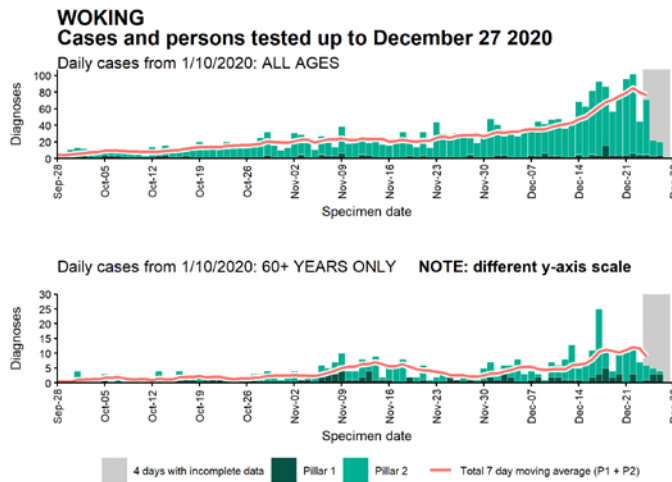
Data from SGSS. Produced by Outbreak Surveillance Team, PHE

## Case numbers, testing numbers and positivity, Windsor and Maidenhead : 01 Sep to 27 Dec 2020



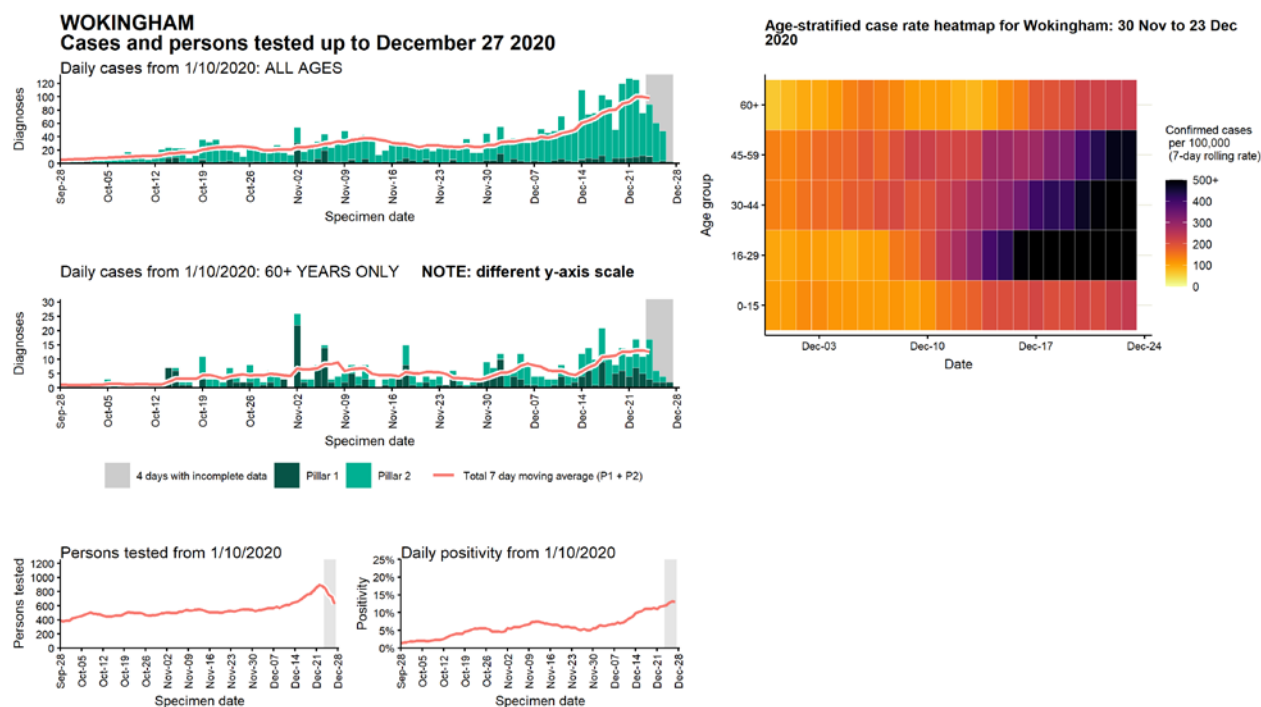
Data from SGSS. Produced by Outbreak Surveillance Team, PHE

## Case numbers, testing numbers and positivity, Woking : 01 Sep to 27 Dec 2020



Data from SGSS. Produced by Outbreak Surveillance Team, PHE

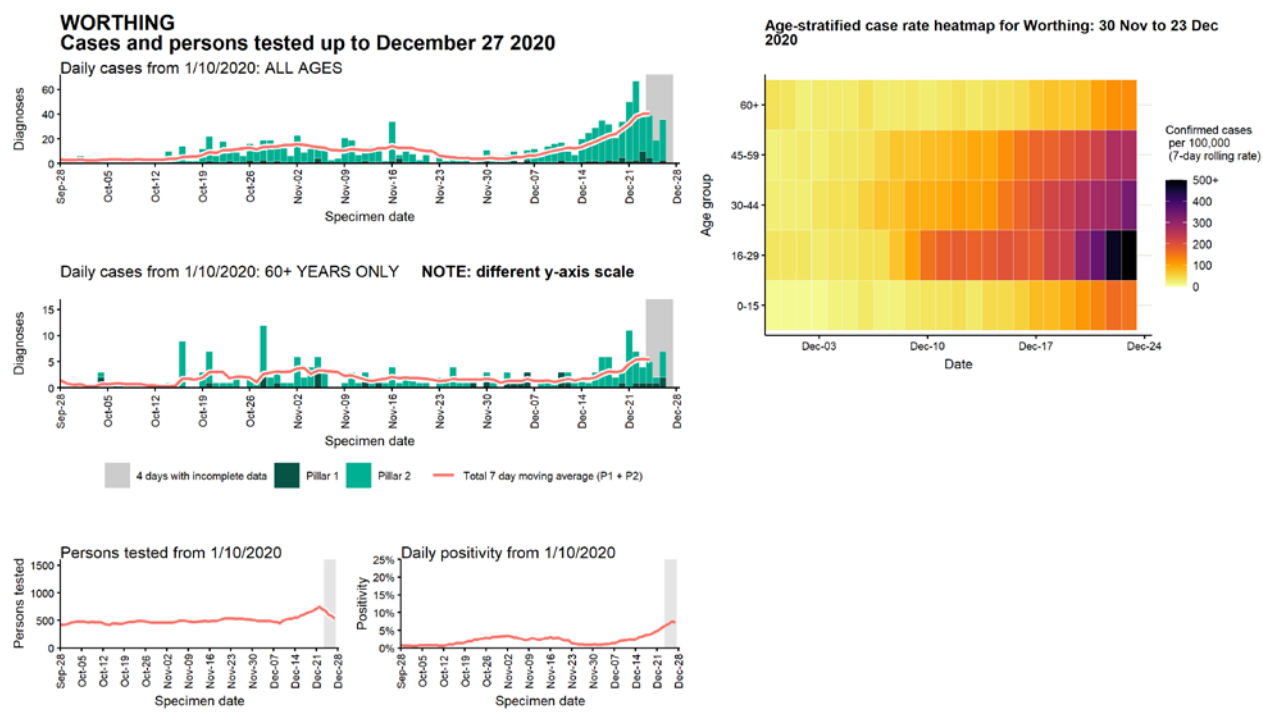
Case numbers, testing numbers and positivity, Wokingham : 01 Sep to 27 Dec 2020



Data from SGSS. Produced by Outbreak Surveillance Team, PHE

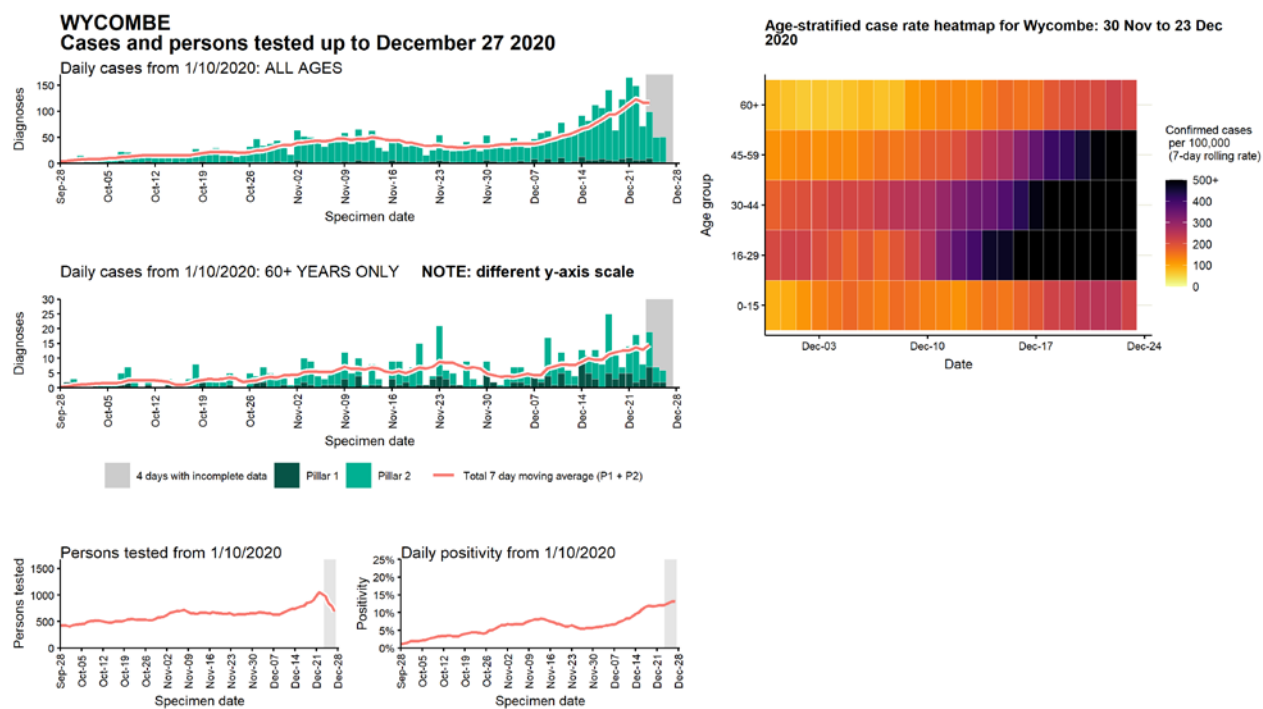


# Case numbers, testing numbers and positivity, Worthing : 01 Sep to 27 Dec 2020



Data from SGSS. Produced by Outbreak Surveillance Team, PHE

Case numbers, testing numbers and positivity, Wycombe : 01 Sep to 27 Dec 2020



Data from SGSS. Produced by Outbreak Surveillance Team, PHE

© Crown copyright 2020

[www.gov.uk/dhsc](http://www.gov.uk/dhsc)

This publication is licensed under the terms of the Open Government Licence v3.0 except where otherwise stated. To view this licence, visit [nationalarchives.gov.uk/doc/open-government-licence/version/3](http://nationalarchives.gov.uk/doc/open-government-licence/version/3)

Where we have identified any third party copyright information you will need to obtain permission from the copyright holders concerned.

