



Department
of Health &
Social Care

North West: lower tier local authority watchlist – epidemiological charts

Produced 28 December 2020

NOTES

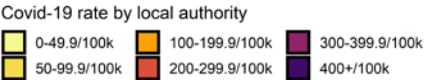
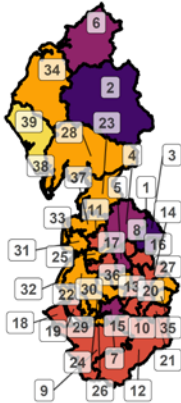
- This data is provided by Public Health England for the purpose of monitoring and supporting the management of Covid-19 infections in Local Authorities.
- The reports are produced using 2019 ONS population data
- If you would like to know the weekly trend for the case rate charts and persons tested chart please see Lower-tier local authority watchlist.

Weekly case rate per 100,000 population by local authority: 17 Dec to 23 Dec 2020

Rank	Local Authority	Case Rate (per 100,000)	Number of cases (1 week)
1	Burnley	499.3	444
2	Eden	495.7	264
3	Pendle	434.3	400
4	Ribble Valley	371.2	226
5	Blackburn with Darwen	345.4	517
6	Carlisle	331.3	360
7	Warrington	304.3	639
8	Hyndburn	276.4	224
9	Cheshire West and Chester	257.7	884
10	Trafford	246.5	585
11	Preston	245.2	351
12	Cheshire East	233.8	898
13	Bury	229.9	439
14	Rochdale	227.1	505
15	Salford	224.5	581
16	Rossendale	219.6	157
17	Chorley	219.1	259
18	Wirral	209.6	679
19	Liverpool	203.4	1013

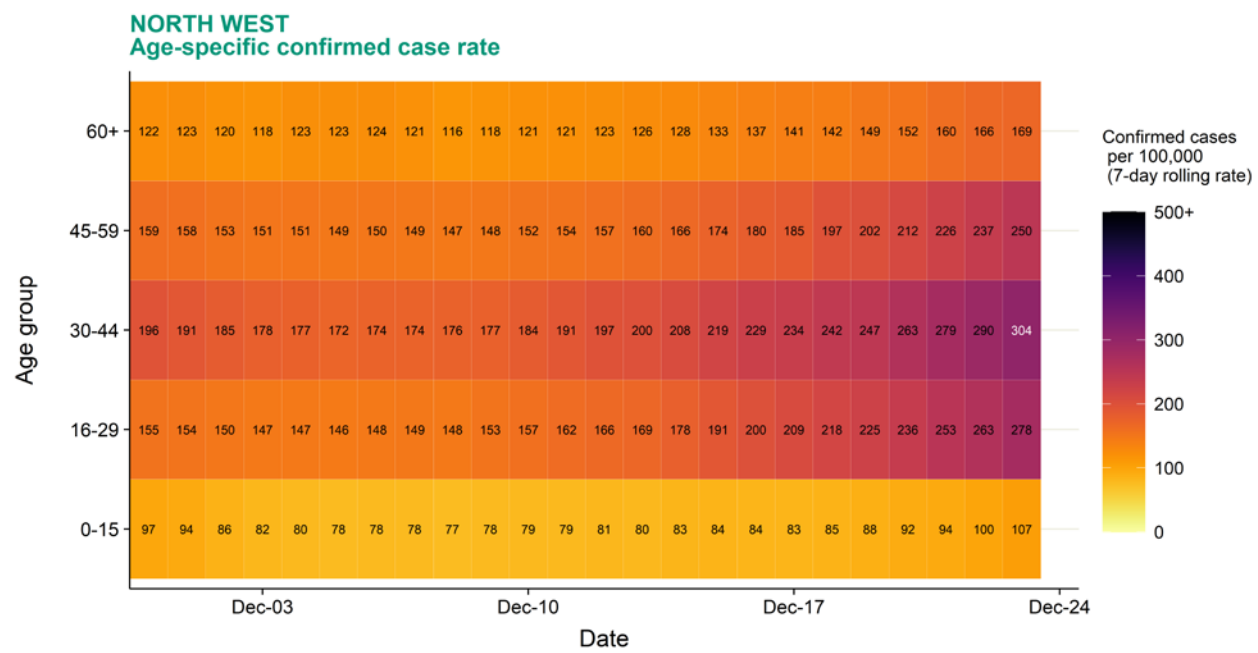
Rank	Local Authority	Case Rate (per 100,000)	Number of cases (1 week)
20	Manchester	202.9	1122
21	Stockport	200.7	589
22	West Lancashire	198.6	227
23	Lancaster	197.9	289
24	St. Helens	195.5	353
25	South Ribble	194.1	215
26	Halton	193.2	250
27	Oldham	192.7	457
28	South Lakeland	191.3	201
29	Knowsley	188.3	284
30	Wigan	185.0	608
31	Fylde	183.2	148
32	Sefton	173.7	480
33	Blackpool	171.4	239
34	Allerdale	168.8	165
35	Tameside	168.7	382
36	Bolton	160.7	462
37	Wyre	159.7	179
38	Barrow-in-Furness	101.4	68
39	Copeland	66.0	45

North West
COVID-19 cases: 17 Dec to 23 Dec 2020
Weekly case rates per 100,000 population by local authority



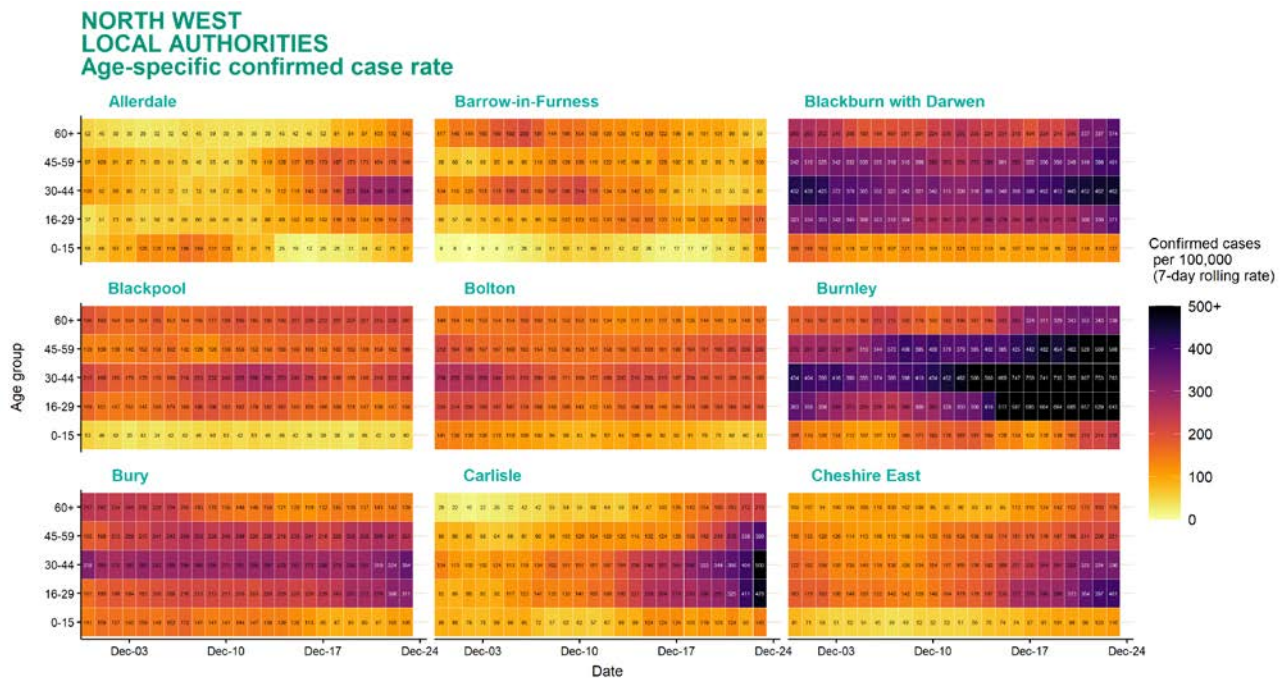
Data from SGSS; Pillar 1 and 2 testing. Figure by Outbreak Surveillance Team, Public Health England.
Contains National Statistics data including 2019 population estimates Â© Crown copyright and database right 2020

Age-stratified heatmap of weekly case rate for North West : 30 Nov to 23 Dec 2020

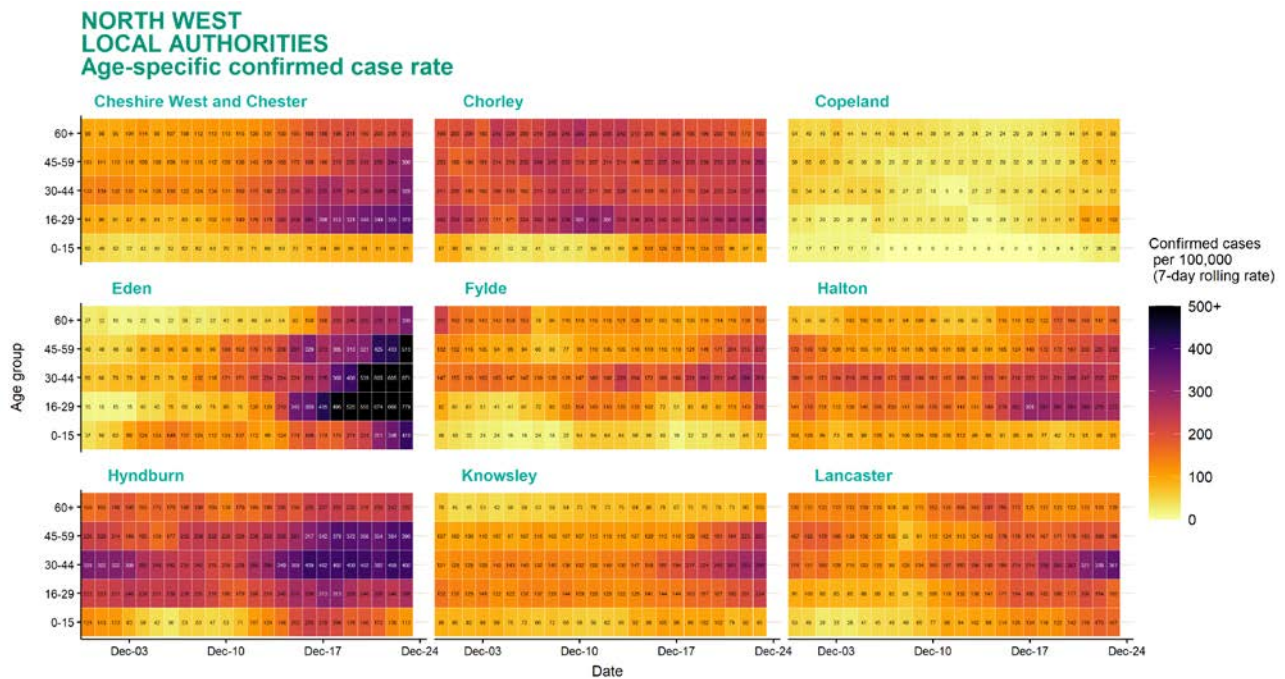


Source: Case data from SGSS. Produced by Outbreak Surveillance Team, PHE
Contains National Statistics data Â© Crown copyright and database right 2020

Age-stratified heatmap of weekly case rate by local authority for North West : 30 Nov to 23 Dec 2020



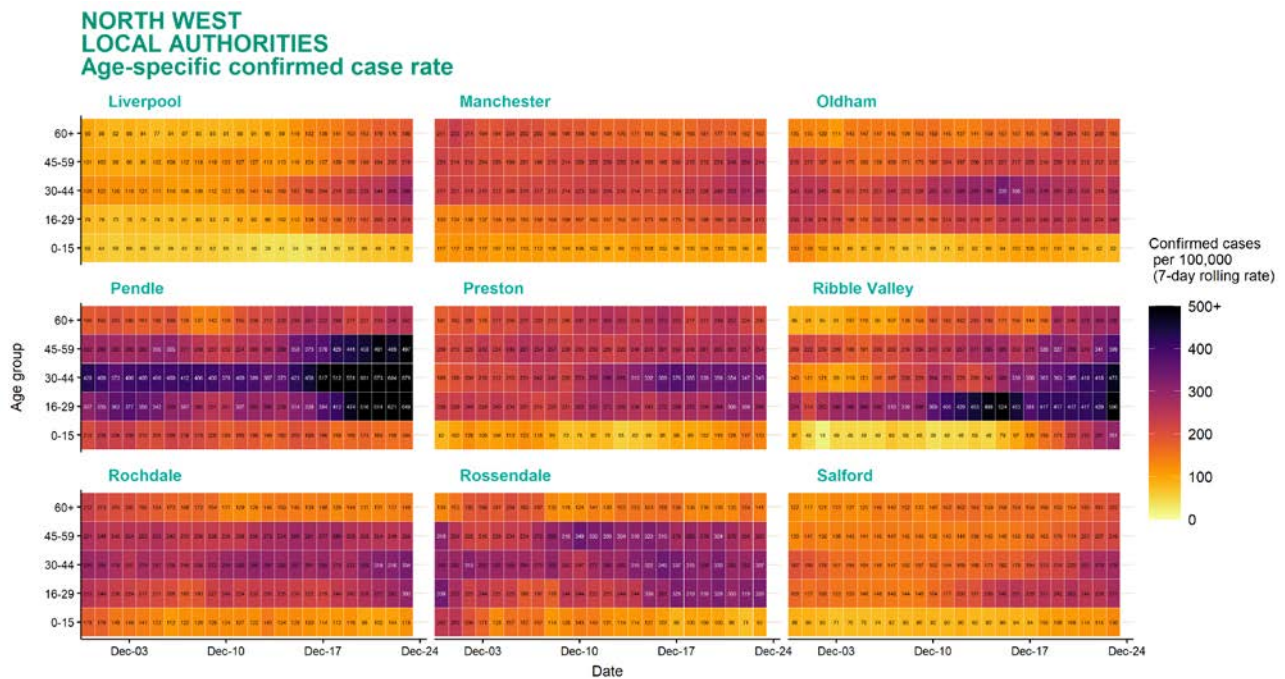
Age-stratified heatmap of weekly case rate by local authority for North West : 30 Nov to 23 Dec 2020



Source: Case data from SGSS. Produced by Outbreak Surveillance Team, PHE

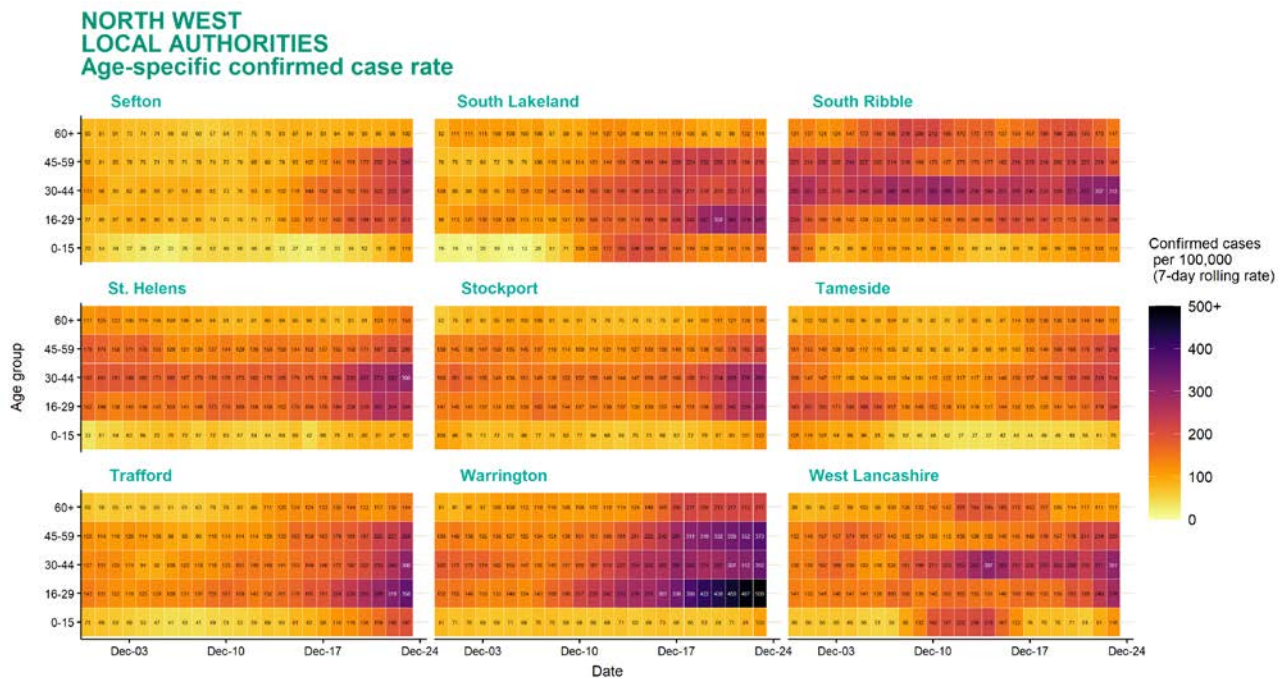
Contains National Statistics data Â© Crown copyright and database right 2020

Age-stratified heatmap of weekly case rate by local authority for North West : 30 Nov to 23 Dec 2020



Source: Case data from SGSS. Produced by Outbreak Surveillance Team, PHE
Contains National Statistics data Â© Crown copyright and database right 2020

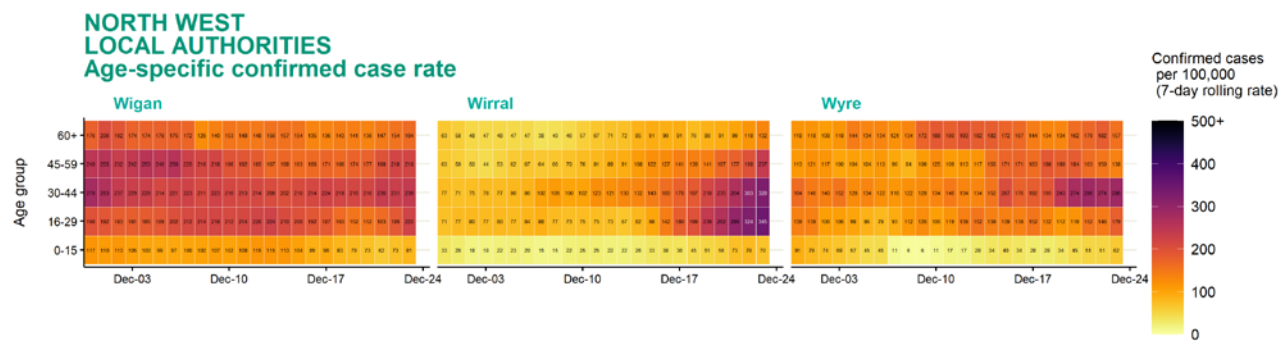
Age-stratified heatmap of weekly case rate by local authority for North West : 30 Nov to 23 Dec 2020



Source: Case data from SGSS. Produced by Outbreak Surveillance Team, PHE

Contains National Statistics data Â© Crown copyright and database right 2020

Age-stratified heatmap of weekly case rate by local authority for North West : 30 Nov to 23 Dec 2020

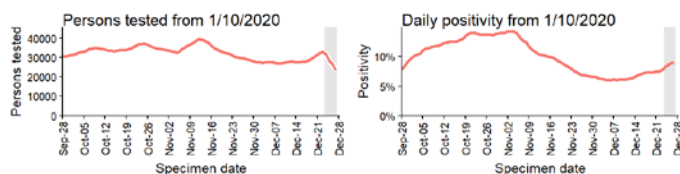
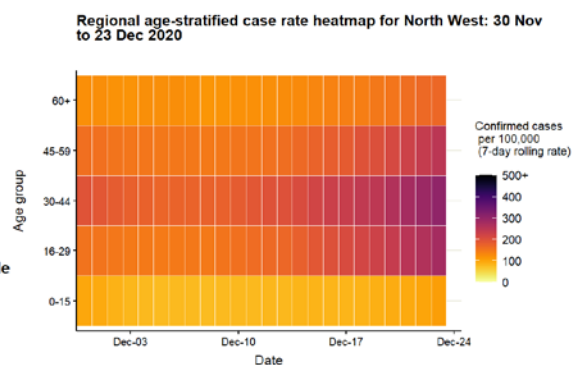
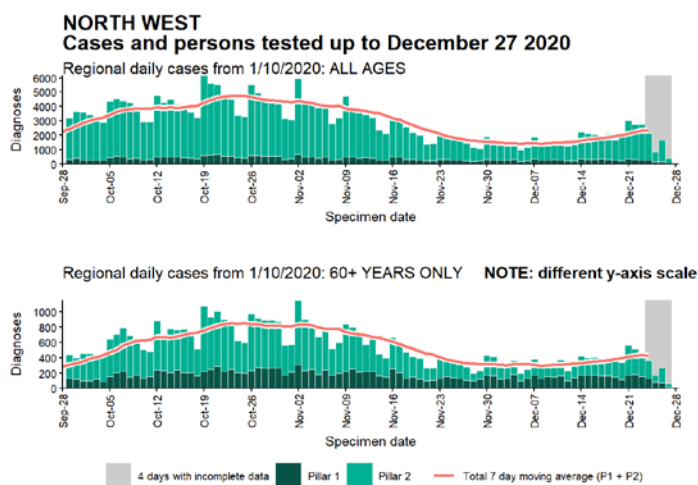


Date

Source: Case data from SGSS. Produced by Outbreak Surveillance Team, PHE

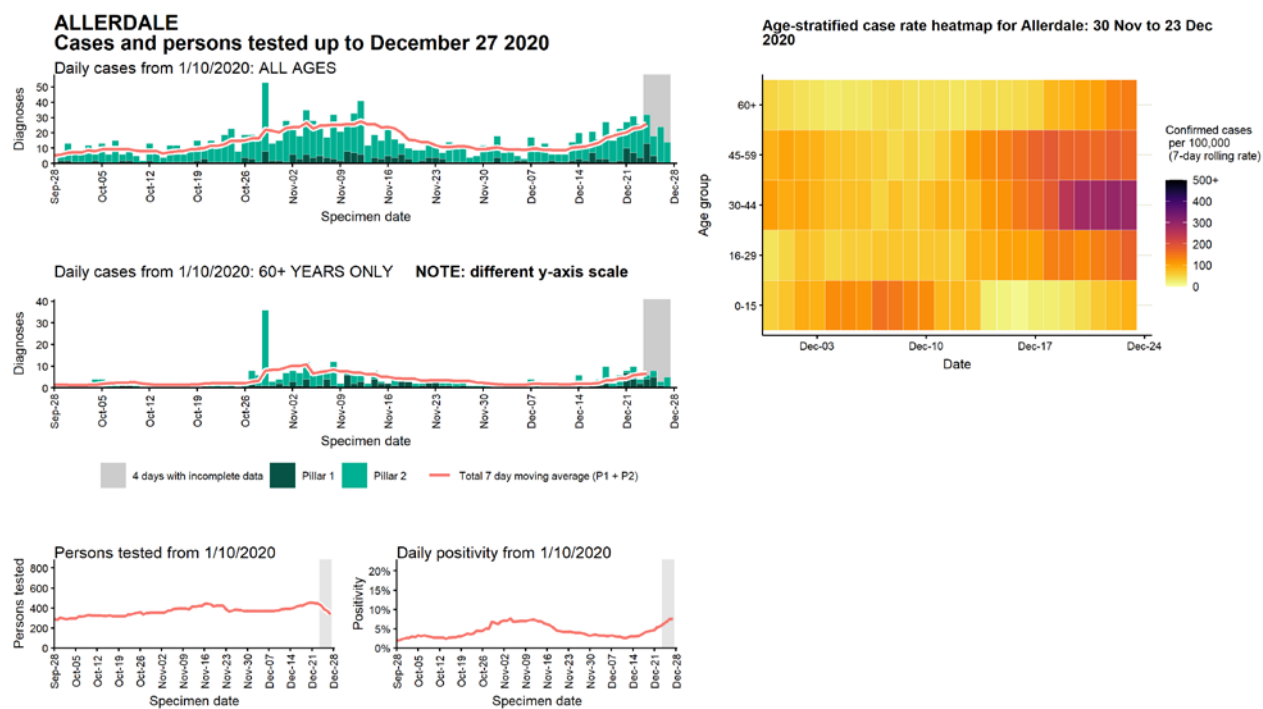
Contains National Statistics data Â© Crown copyright and database right 2020

**Regional case numbers, testing numbers and positivity, North West :
01 Sep to 27 Dec 2020**



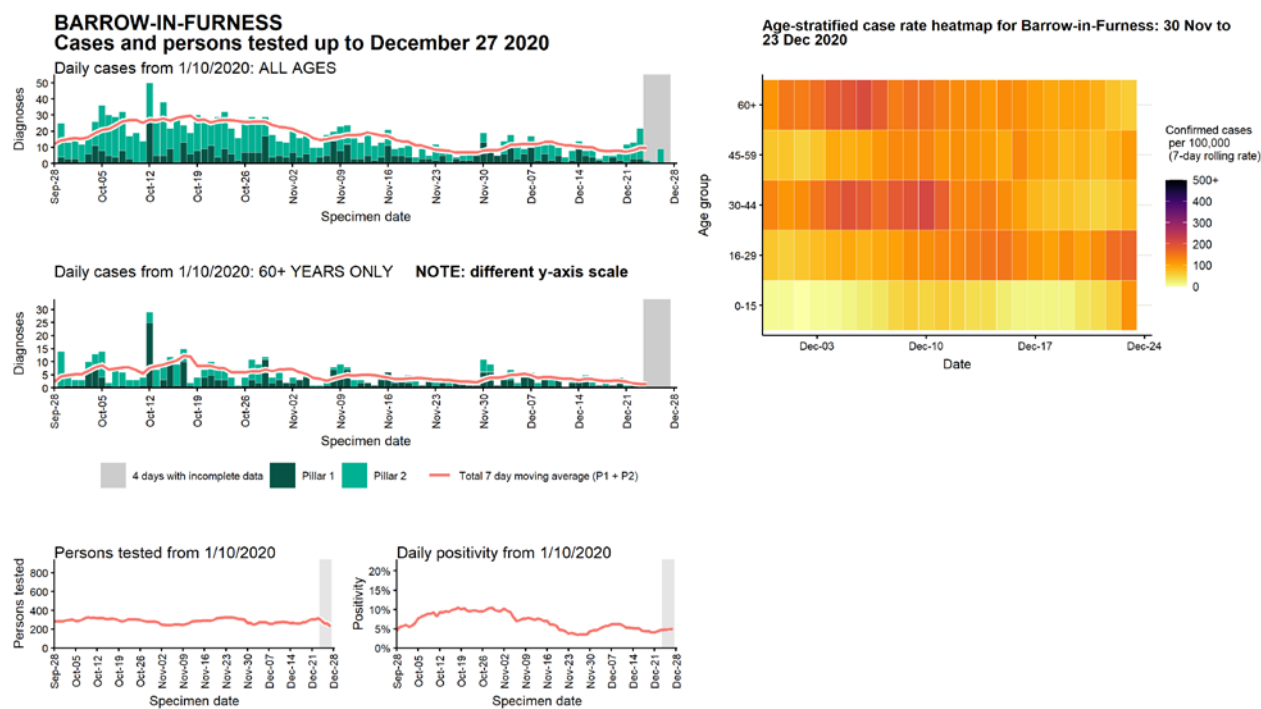
Data from SGSS. Produced by Outbreak Surveillance Team, PHE

Case numbers, testing numbers and positivity, Allerdale : 01 Sep to 27 Dec 2020

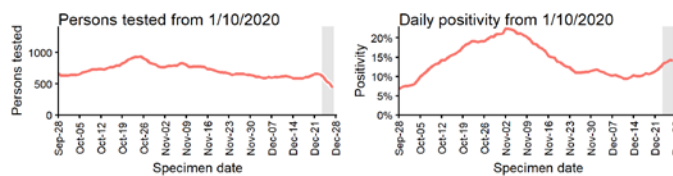
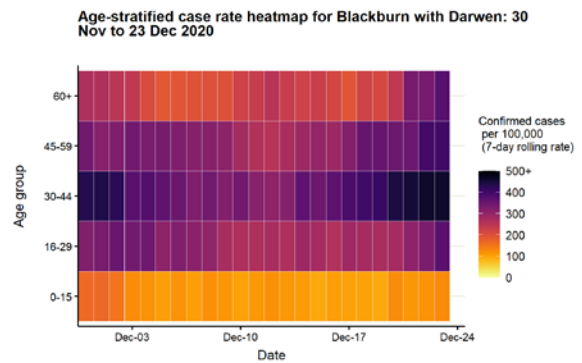
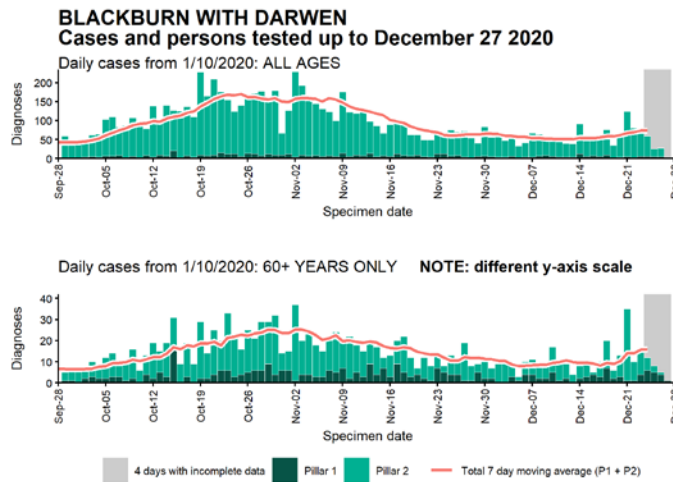


Data from SGSS. Produced by Outbreak Surveillance Team, PHE

Case numbers, testing numbers and positivity, Barrow-in-Furness : 01 Sep to 27 Dec 2020

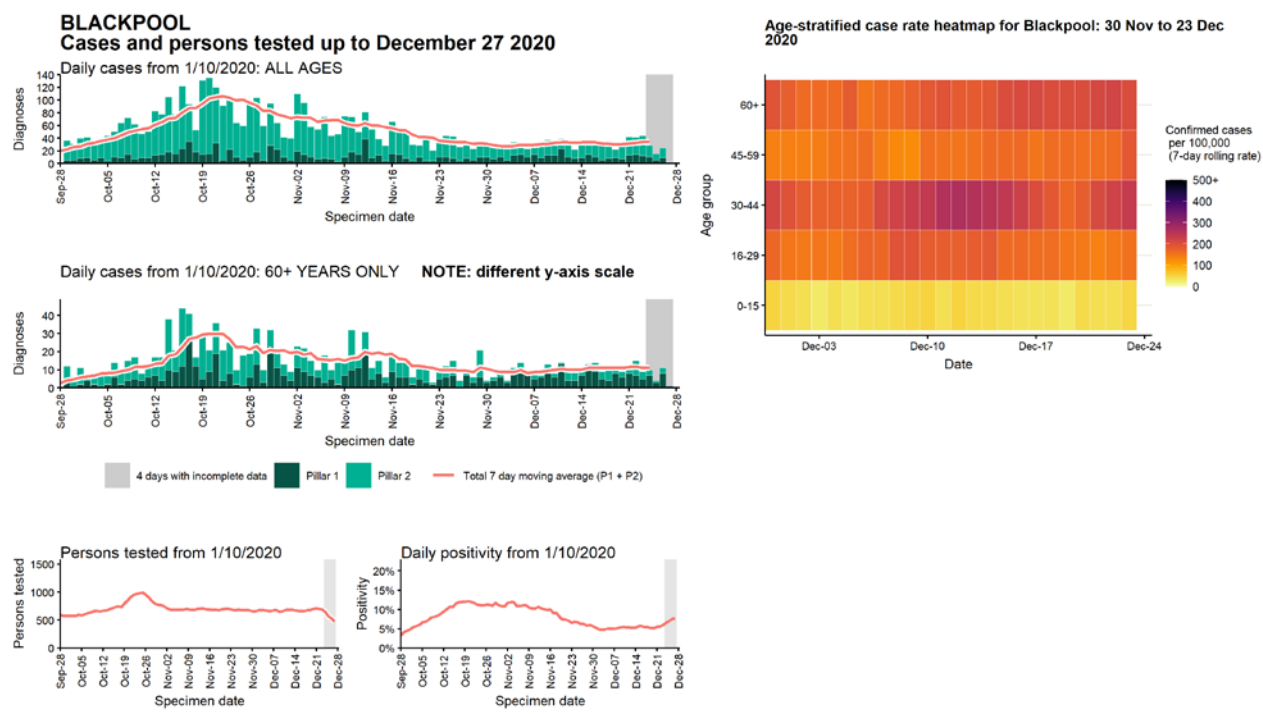


Case numbers, testing numbers and positivity, Blackburn with Darwen : 01 Sep to 27 Dec 2020



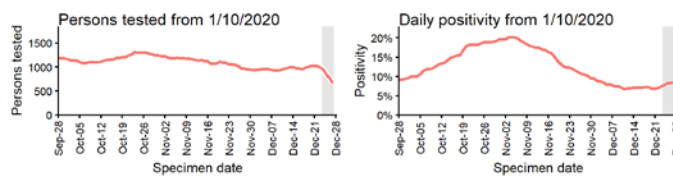
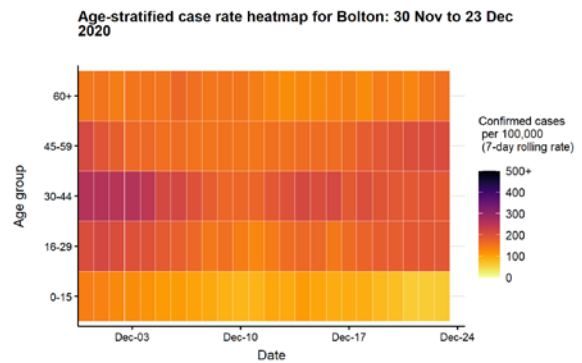
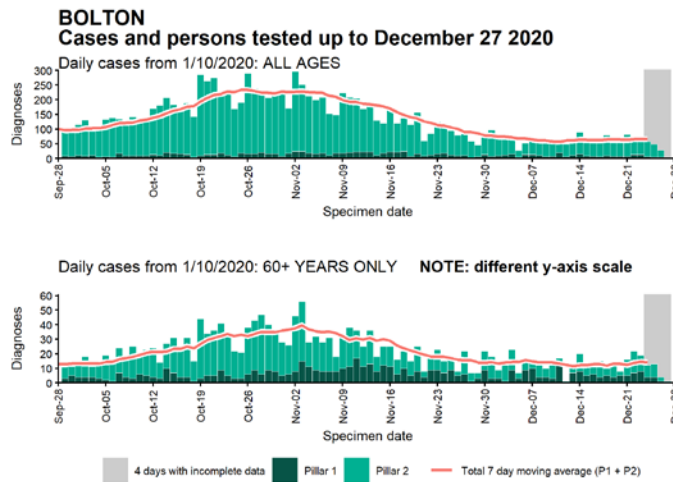
Data from SGSS. Produced by Outbreak Surveillance Team, PHE

Case numbers, testing numbers and positivity, Blackpool : 01 Sep to 27 Dec 2020



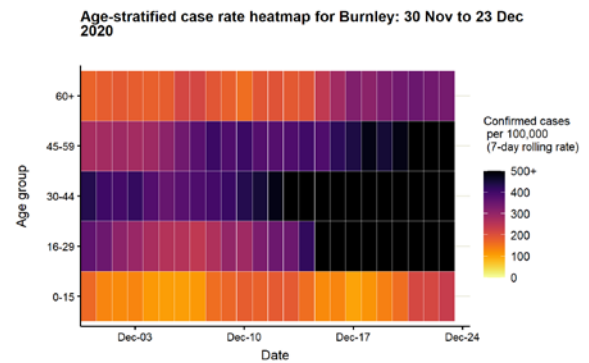
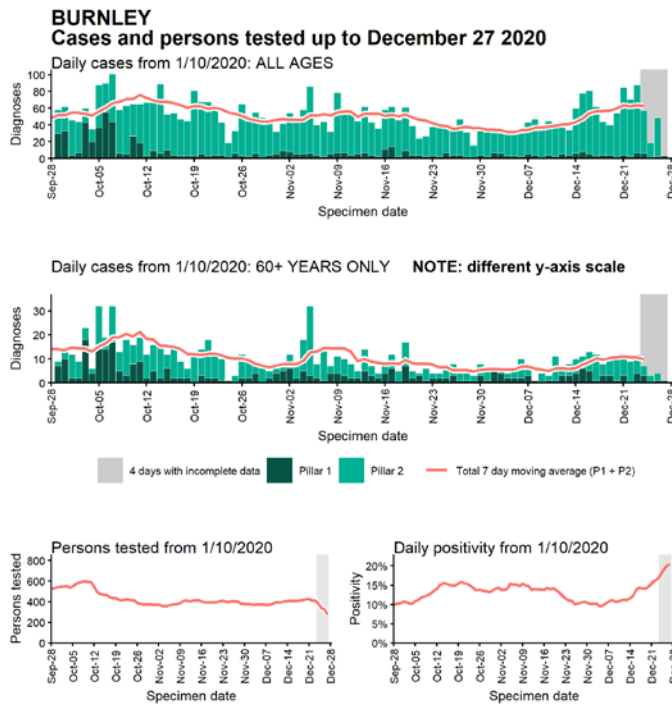
Data from SGSS. Produced by Outbreak Surveillance Team, PHE

Case numbers, testing numbers and positivity, Bolton : 01 Sep to 27 Dec 2020



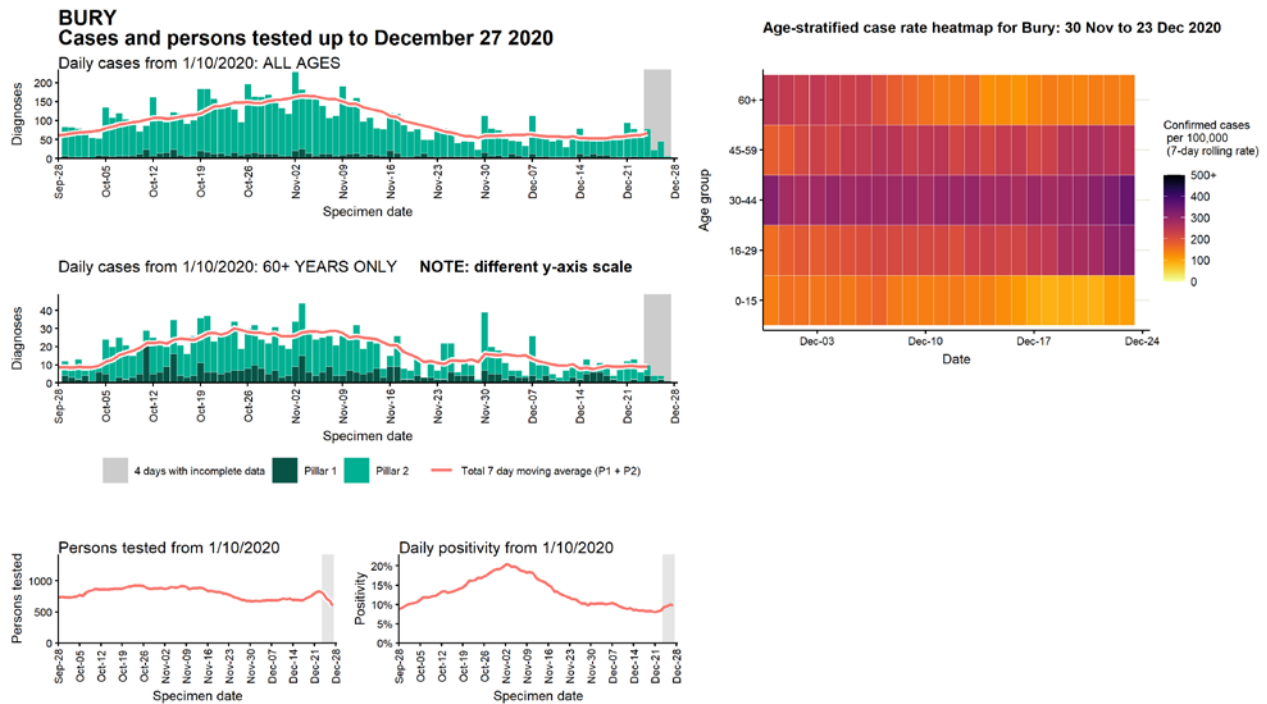
Data from SGSS. Produced by Outbreak Surveillance Team, PHE

Case numbers, testing numbers and positivity, Burnley : 01 Sep to 27 Dec 2020



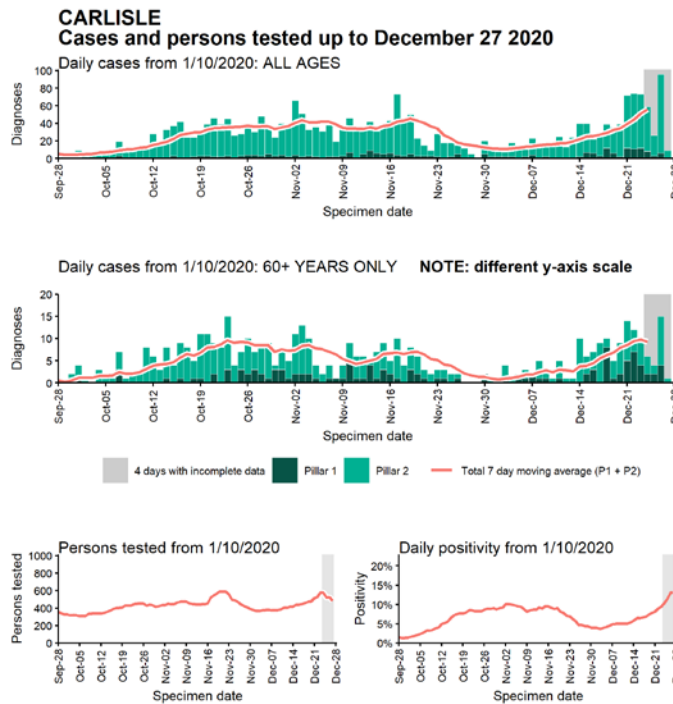
Data from SGSS. Produced by Outbreak Surveillance Team, PHE

Case numbers, testing numbers and positivity, Bury : 01 Sep to 27 Dec 2020

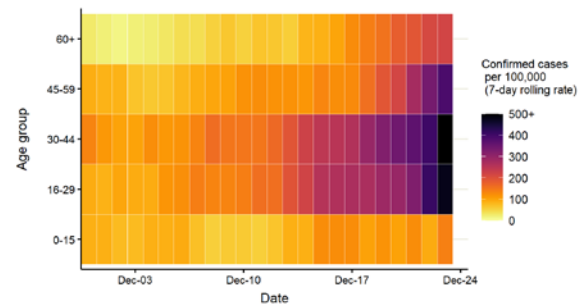


Data from SGSS. Produced by Outbreak Surveillance Team, PHE

Case numbers, testing numbers and positivity, Carlisle : 01 Sep to 27 Dec 2020

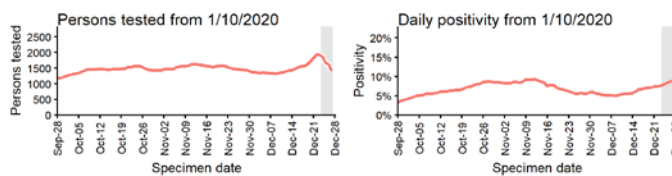
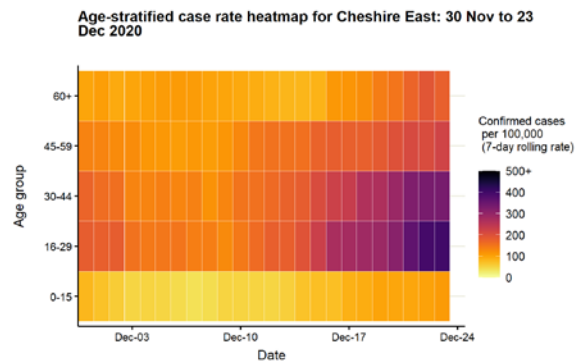
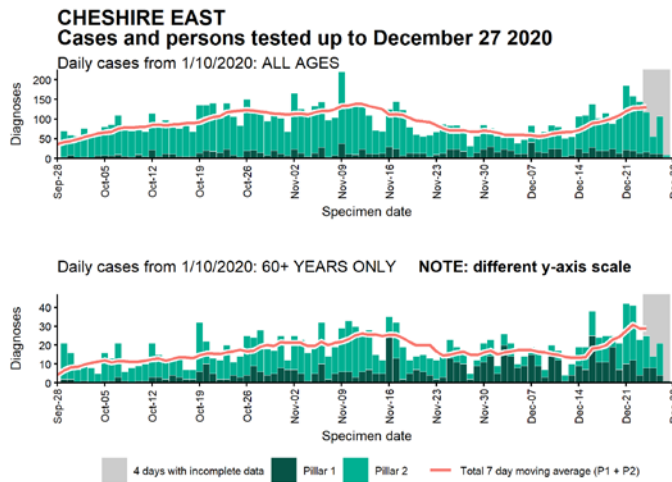


Age-stratified case rate heatmap for Carlisle: 30 Nov to 23 Dec 2020



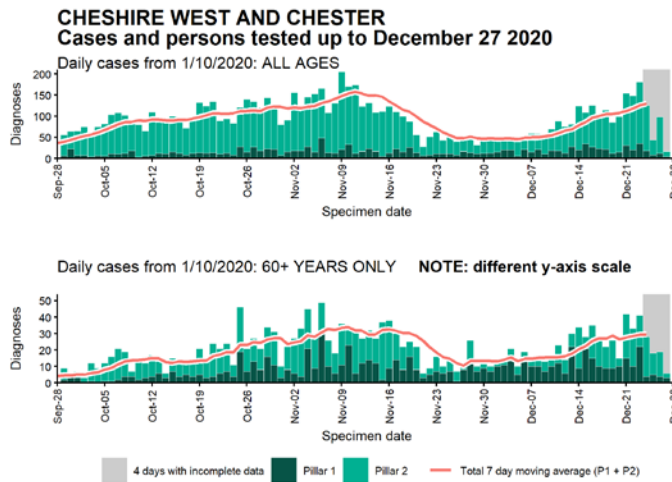
Data from SGSS. Produced by Outbreak Surveillance Team, PHE

Case numbers, testing numbers and positivity, Cheshire East : 01 Sep to 27 Dec 2020

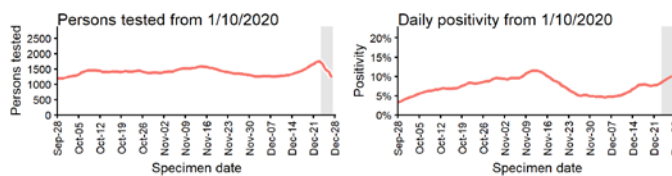
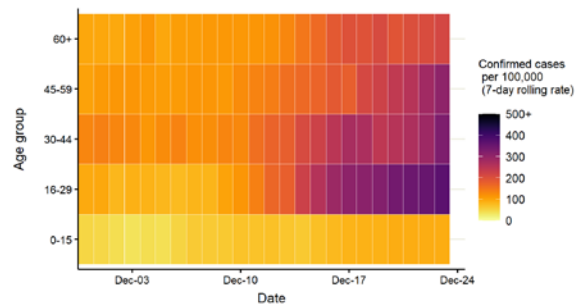


Data from SGSS. Produced by Outbreak Surveillance Team, PHE

Case numbers, testing numbers and positivity, Cheshire West and Chester : 01 Sep to 27 Dec 2020

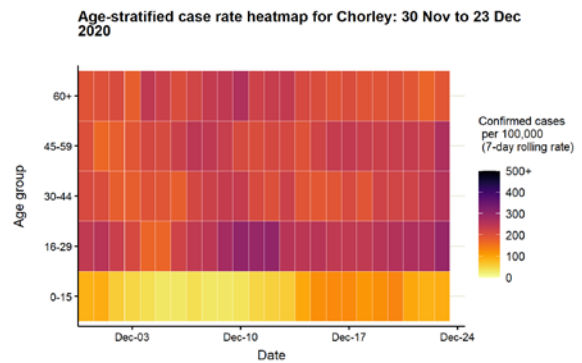
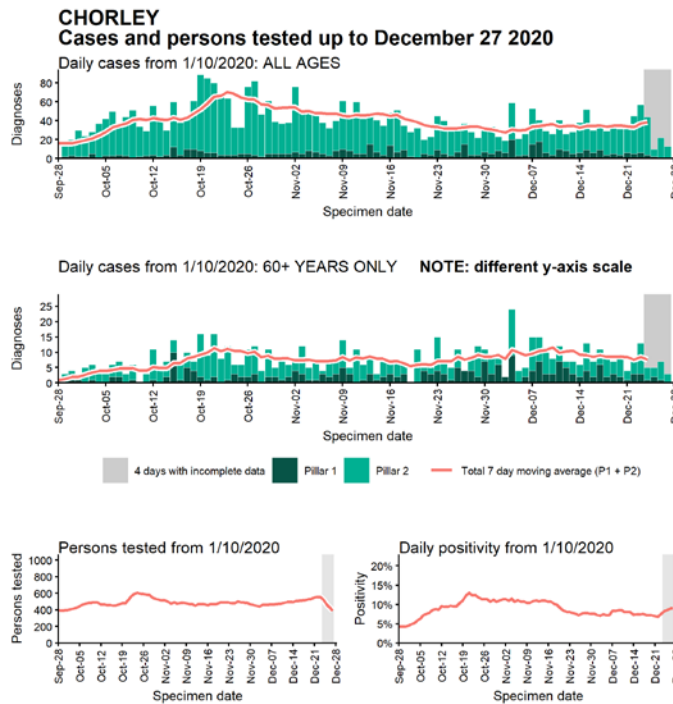


Age-stratified case rate heatmap for Cheshire West and Chester:
30 Nov to 23 Dec 2020



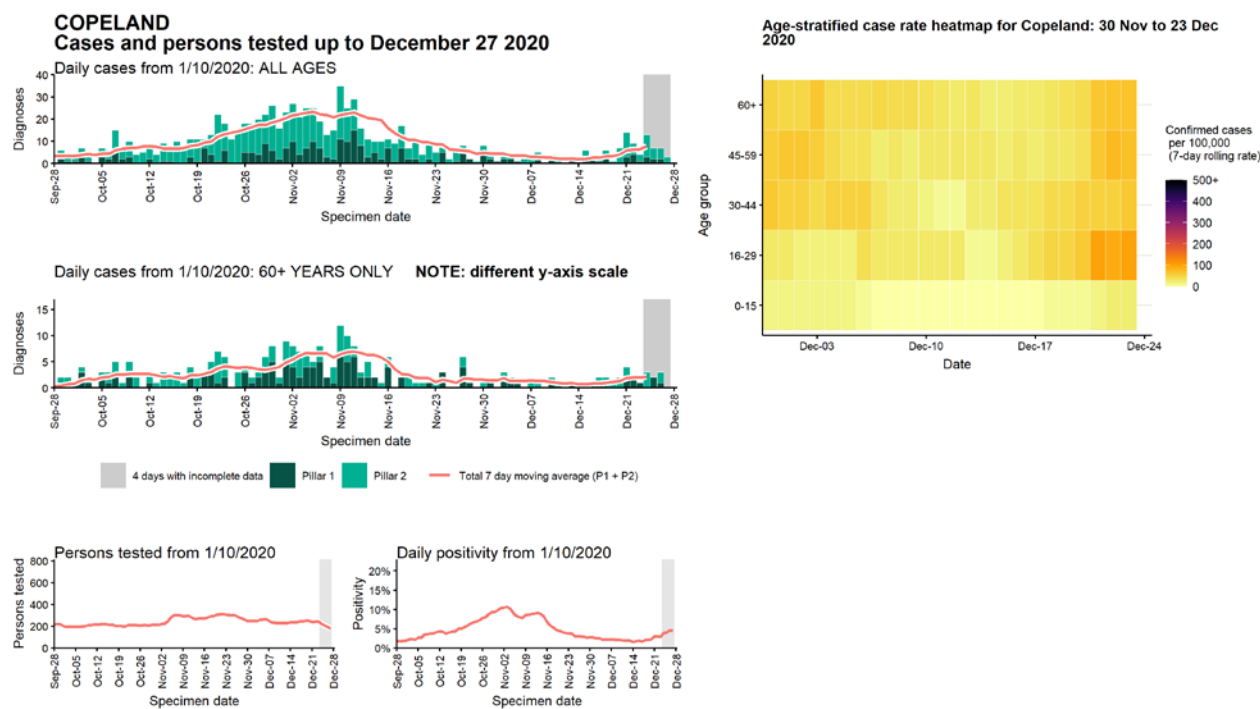
Data from SGSS. Produced by Outbreak Surveillance Team, PHE

Case numbers, testing numbers and positivity, Chorley : 01 Sep to 27 Dec 2020



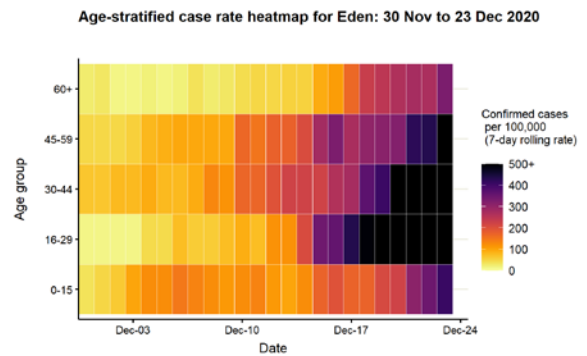
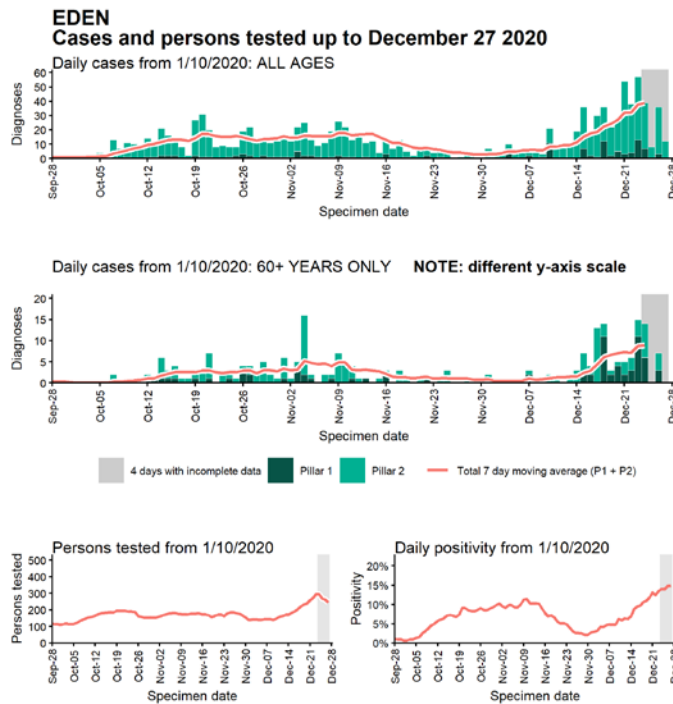
Data from SGSS. Produced by Outbreak Surveillance Team, PHE

Case numbers, testing numbers and positivity, Copeland : 01 Sep to 27 Dec 2020



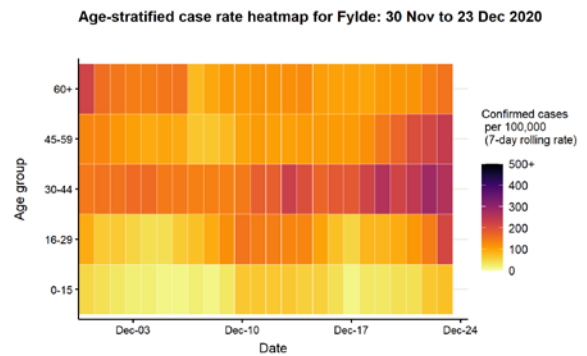
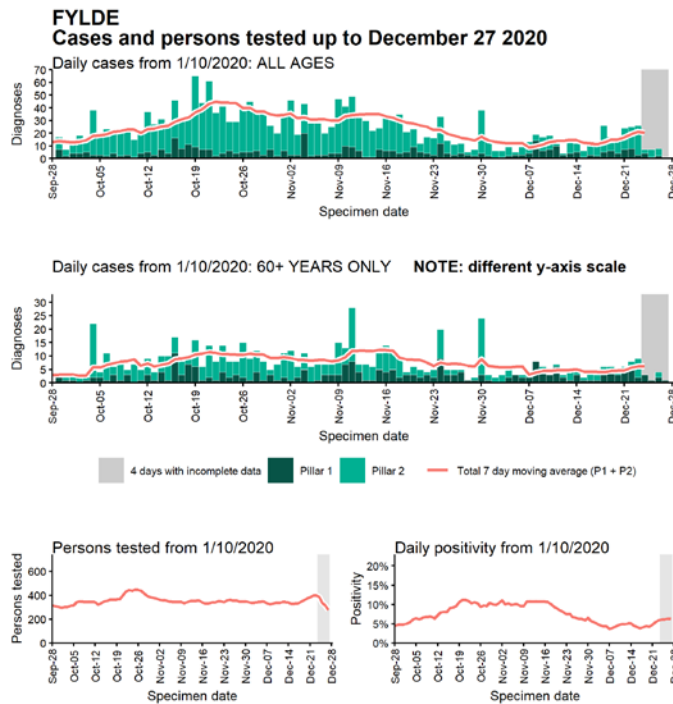
Data from SGSS. Produced by Outbreak Surveillance Team, PHE

Case numbers, testing numbers and positivity, Eden : 01 Sep to 27 Dec 2020



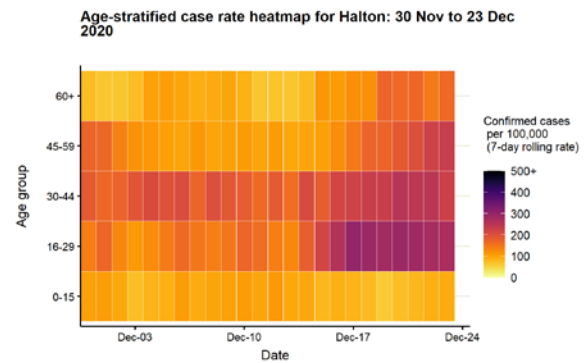
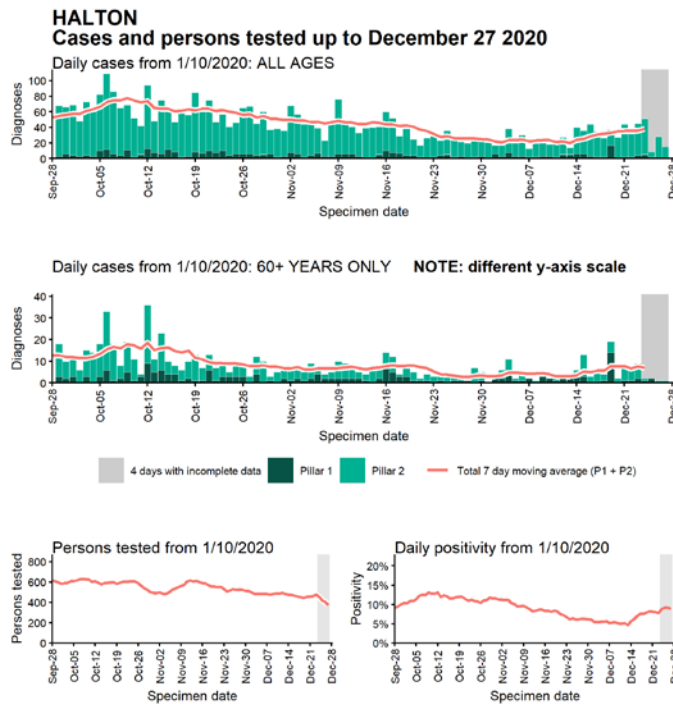
Data from SGSS. Produced by Outbreak Surveillance Team, PHE

Case numbers, testing numbers and positivity, Fylde : 01 Sep to 27 Dec 2020



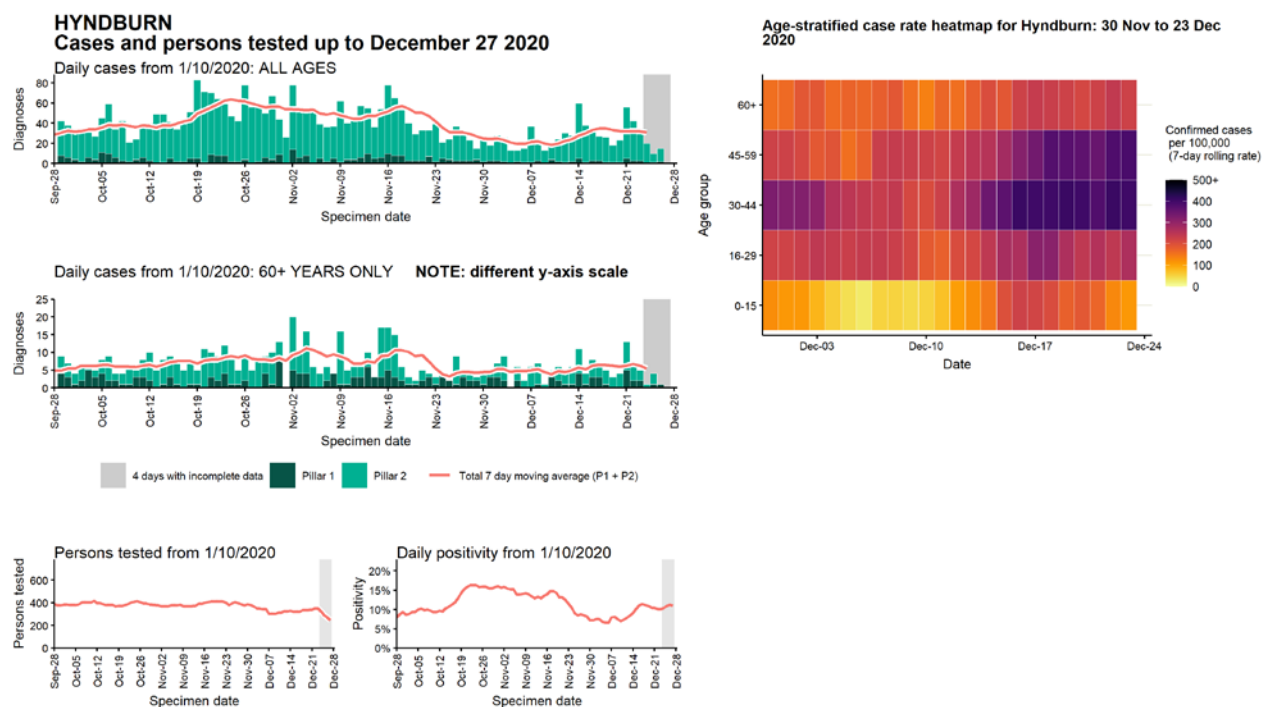
Data from SGSS. Produced by Outbreak Surveillance Team, PHE

Case numbers, testing numbers and positivity, Halton : 01 Sep to 27 Dec 2020



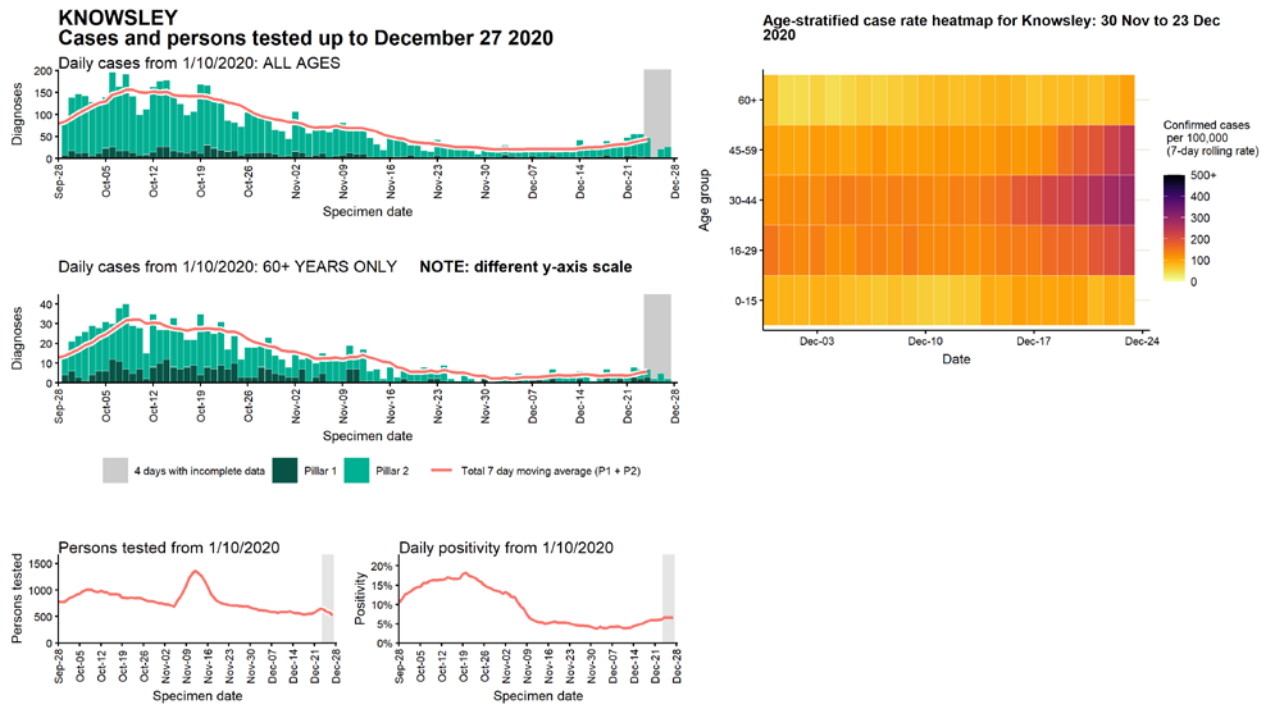
Data from SGSS. Produced by Outbreak Surveillance Team, PHE

Case numbers, testing numbers and positivity, Hyndburn : 01 Sep to 27 Dec 2020



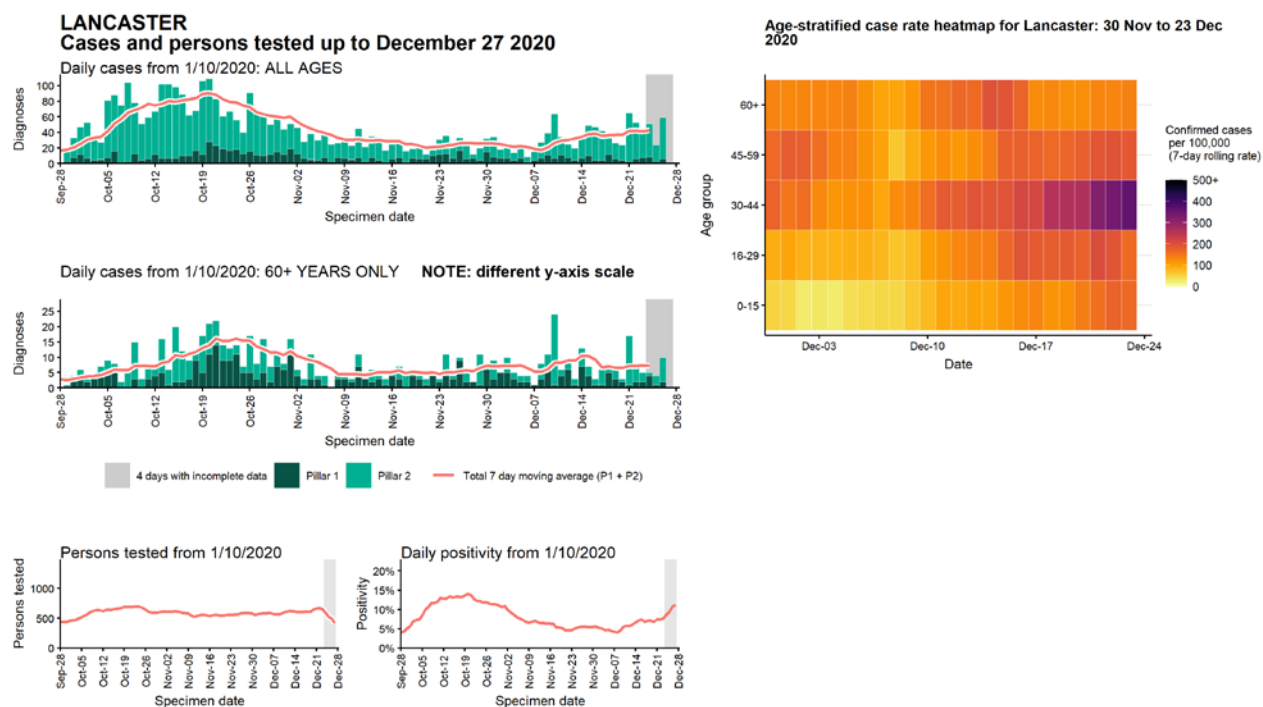
Data from SGSS. Produced by Outbreak Surveillance Team, PHE

Case numbers, testing numbers and positivity, Knowsley : 01 Sep to 27 Dec 2020



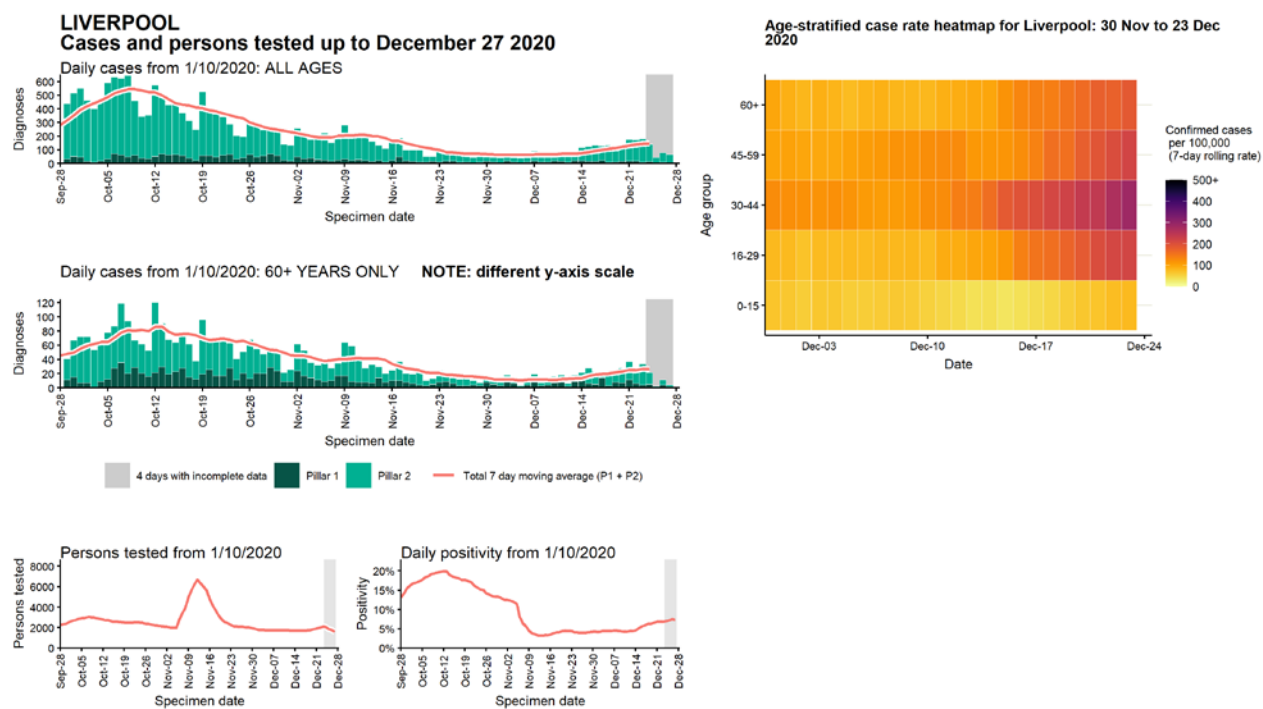
Data from SGSS. Produced by Outbreak Surveillance Team, PHE

Case numbers, testing numbers and positivity, Lancaster : 01 Sep to 27 Dec 2020



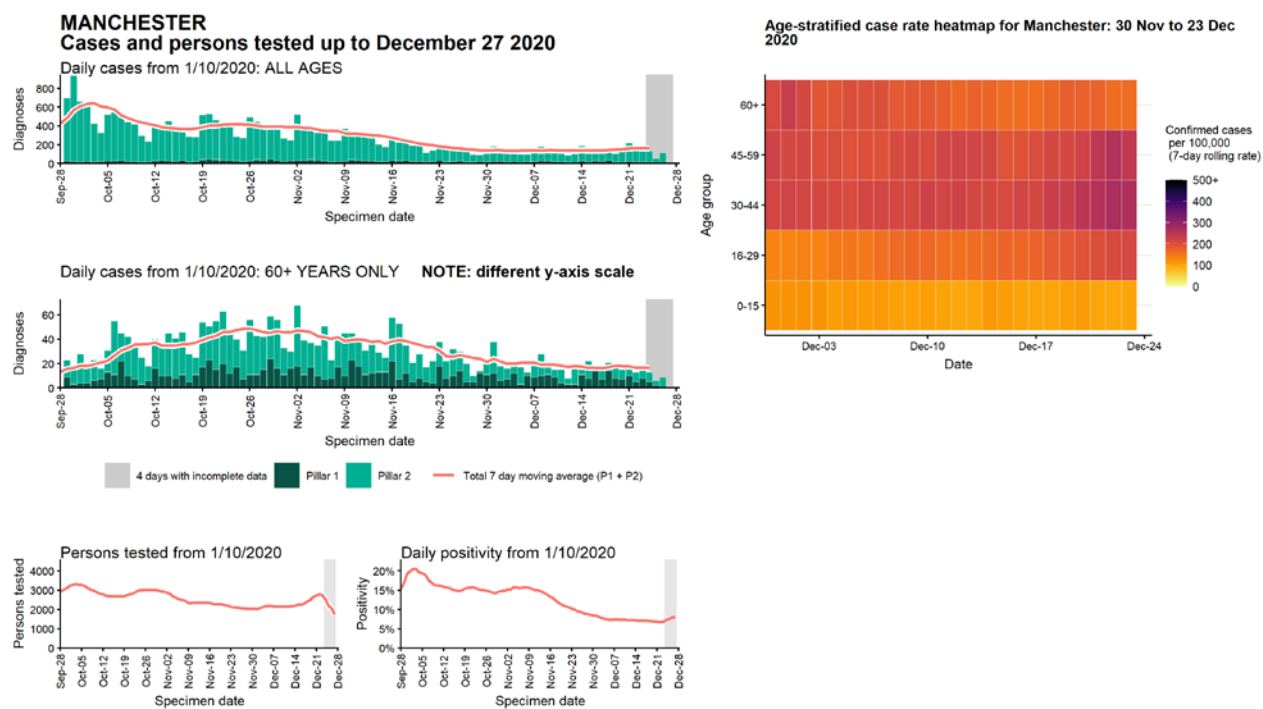
Data from SGSS. Produced by Outbreak Surveillance Team, PHE

Case numbers, testing numbers and positivity, Liverpool : 01 Sep to 27 Dec 2020



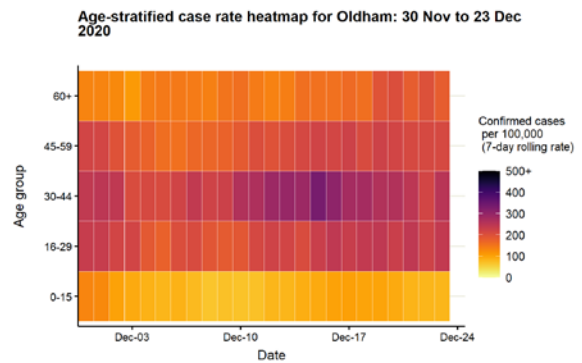
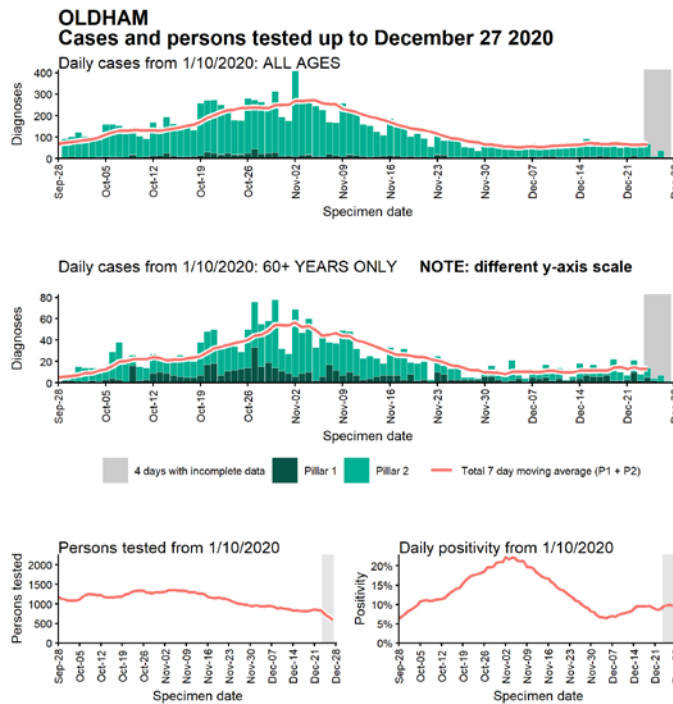
Data from SGSS. Produced by Outbreak Surveillance Team, PHE

Case numbers, testing numbers and positivity, Manchester : 01 Sep to 27 Dec 2020



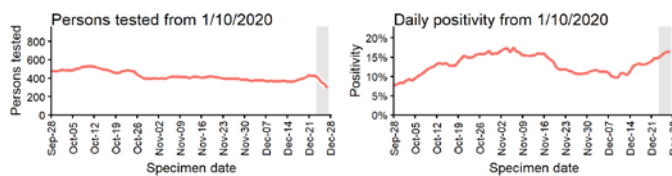
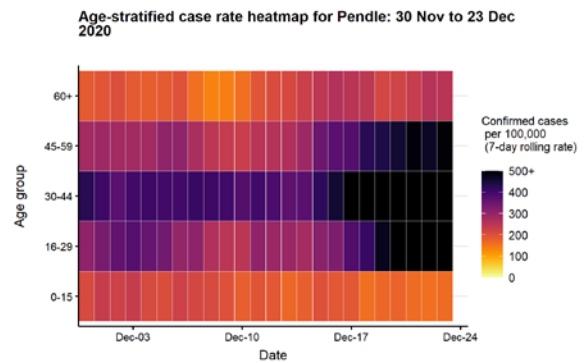
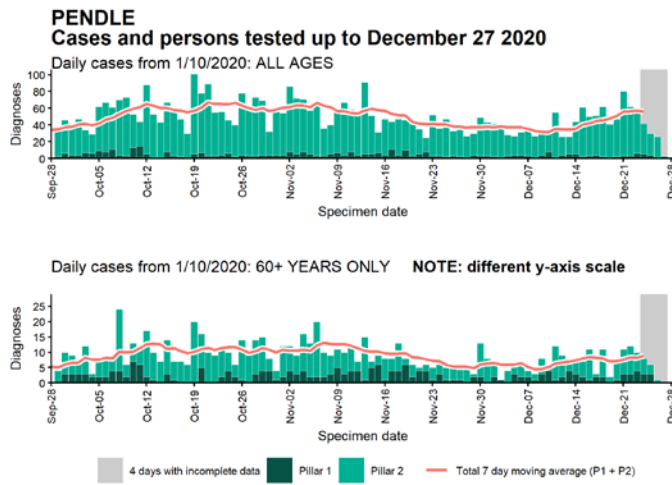
Data from SGSS. Produced by Outbreak Surveillance Team, PHE

Case numbers, testing numbers and positivity, Oldham : 01 Sep to 27 Dec 2020



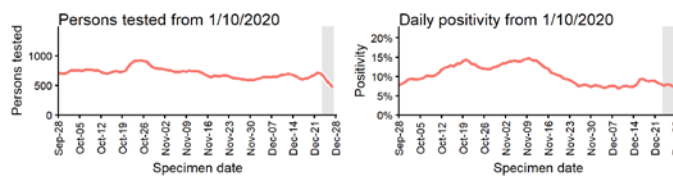
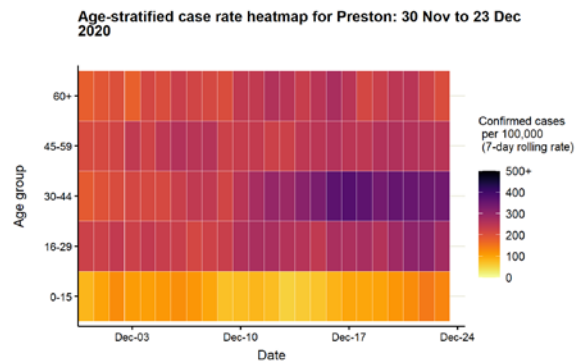
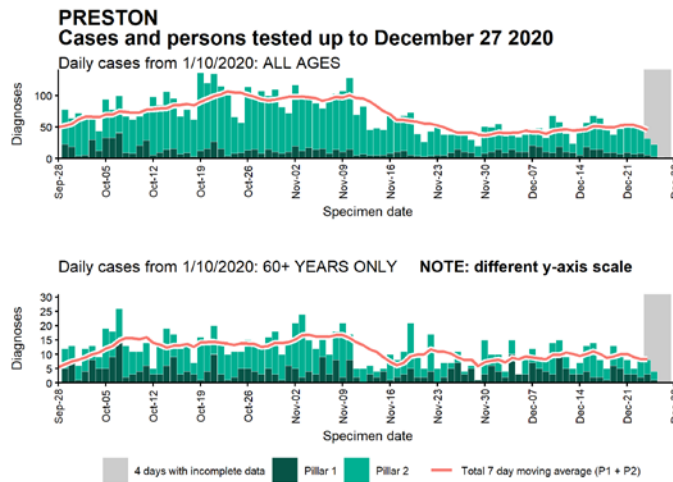
Data from SGSS. Produced by Outbreak Surveillance Team, PHE

Case numbers, testing numbers and positivity, Pendle : 01 Sep to 27 Dec 2020



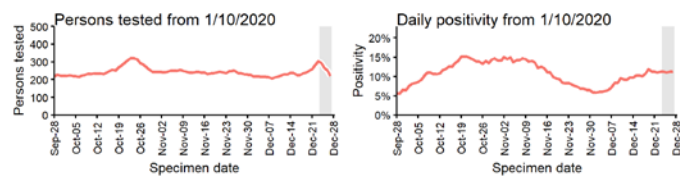
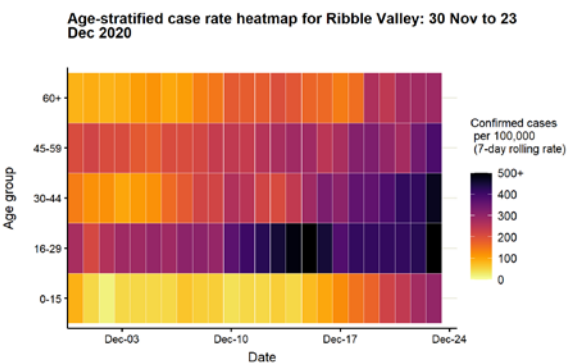
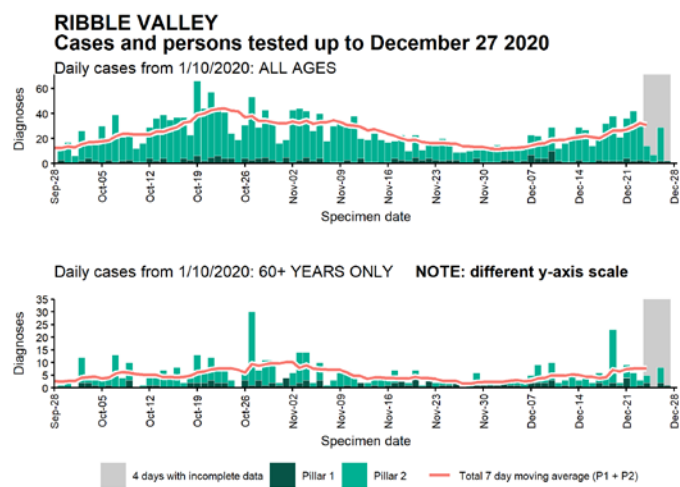
Data from SGSS. Produced by Outbreak Surveillance Team, PHE

Case numbers, testing numbers and positivity, Preston : 01 Sep to 27 Dec 2020



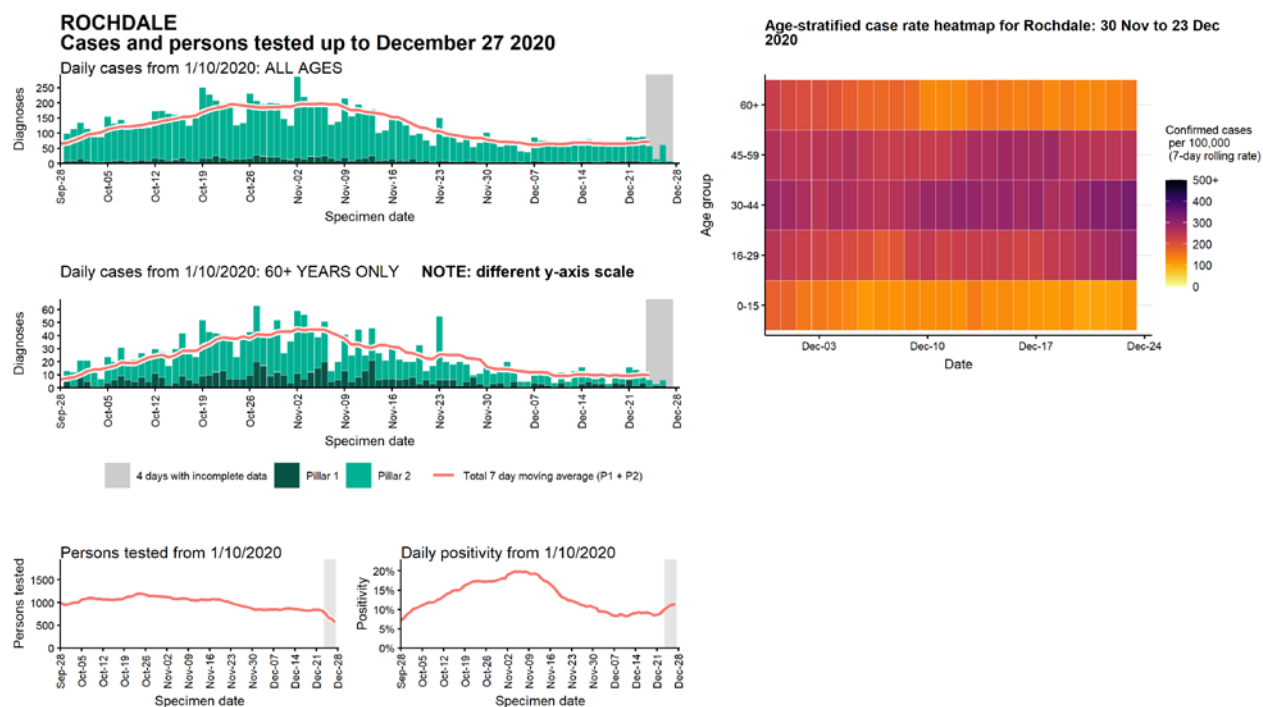
Data from SGSS. Produced by Outbreak Surveillance Team, PHE

Case numbers, testing numbers and positivity, Ribble Valley : 01 Sep to 27 Dec 2020



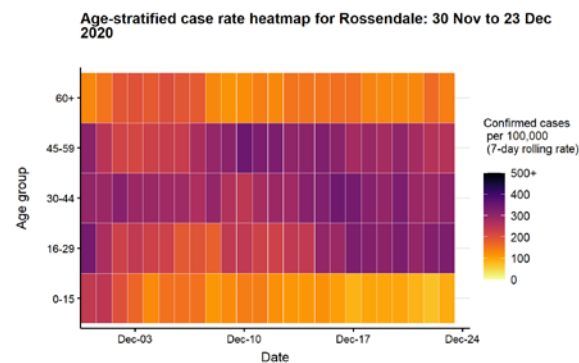
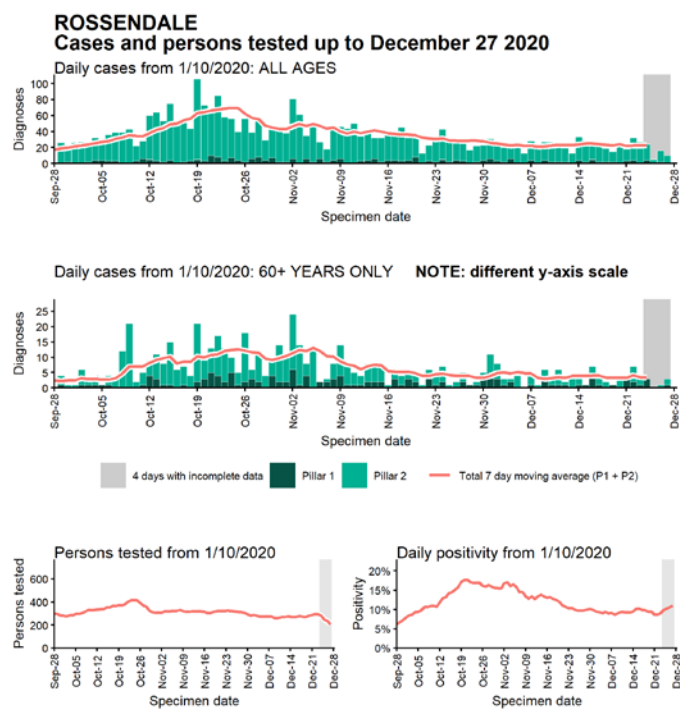
Data from SGSS. Produced by Outbreak Surveillance Team, PHE

Case numbers, testing numbers and positivity, Rochdale : 01 Sep to 27 Dec 2020



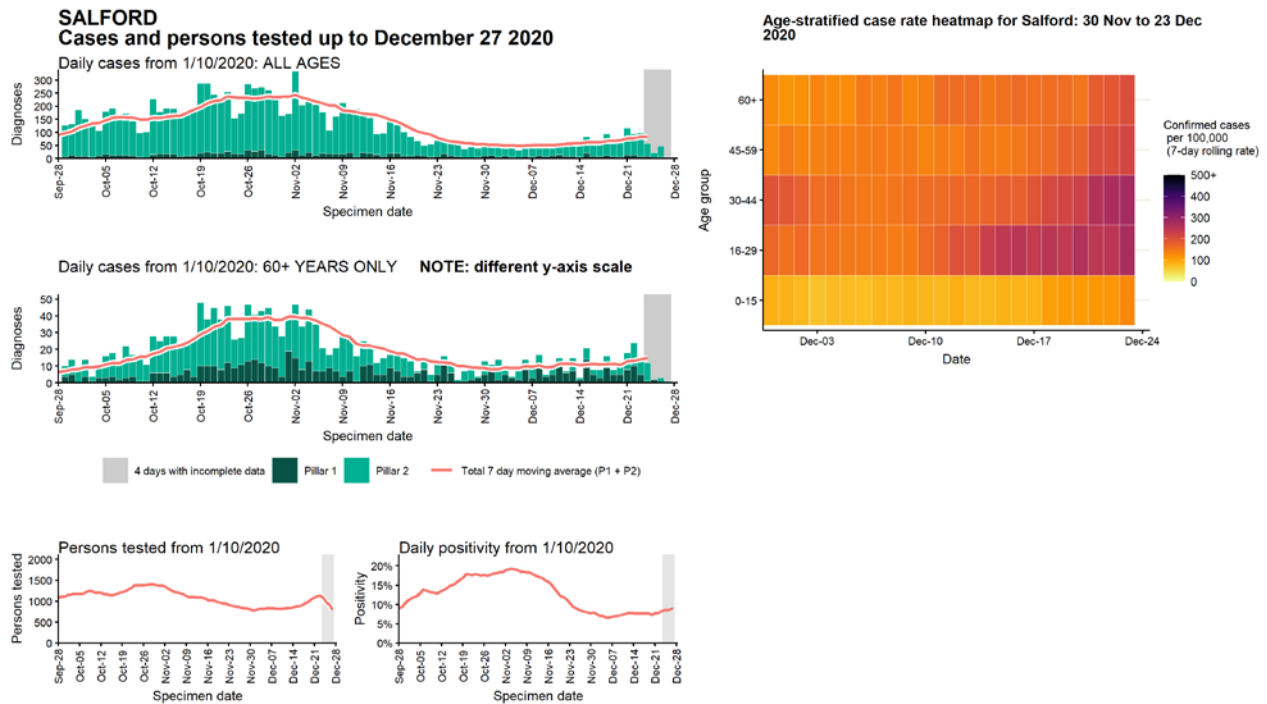
Data from SGSS. Produced by Outbreak Surveillance Team, PHE

Case numbers, testing numbers and positivity, Rossendale : 01 Sep to 27 Dec 2020



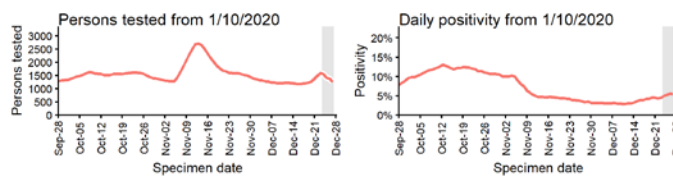
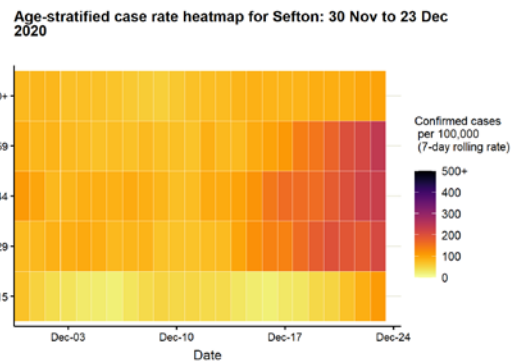
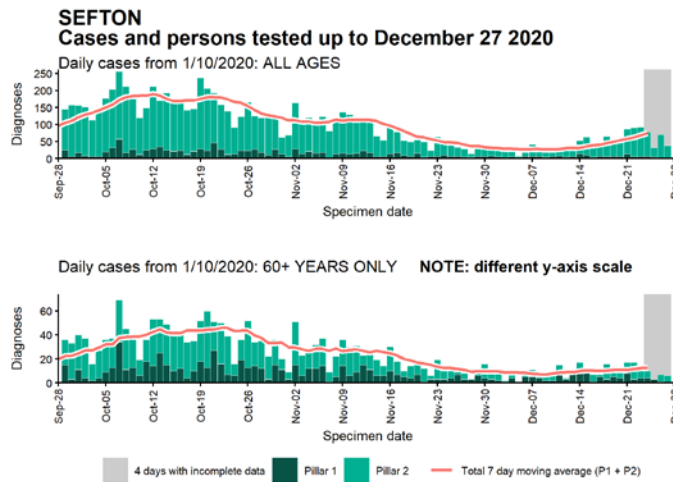
Data from SGSS. Produced by Outbreak Surveillance Team, PHE

Case numbers, testing numbers and positivity, Salford : 01 Sep to 27 Dec 2020



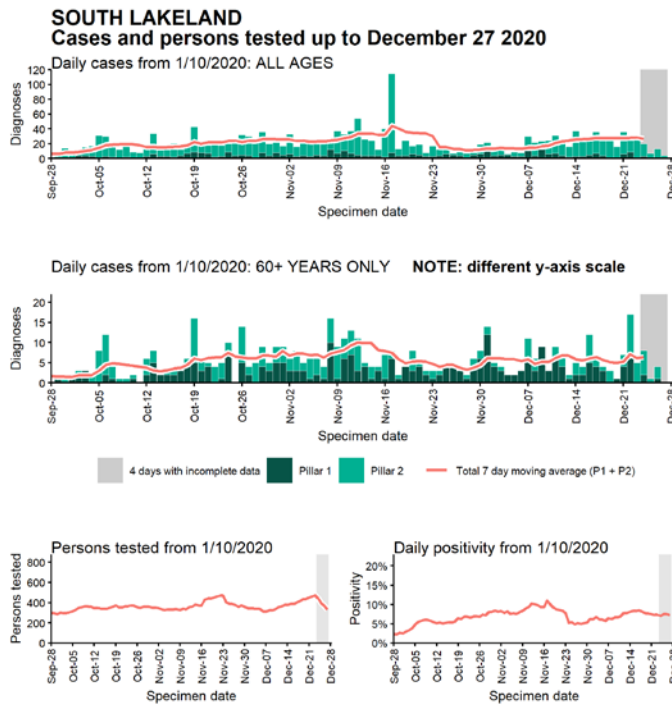
Data from SGSS. Produced by Outbreak Surveillance Team, PHE

Case numbers, testing numbers and positivity, Sefton : 01 Sep to 27 Dec 2020

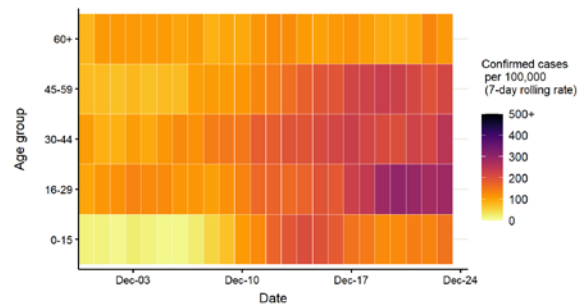


Data from SGSS. Produced by Outbreak Surveillance Team, PHE

Case numbers, testing numbers and positivity, South Lakeland : 01 Sep to 27 Dec 2020

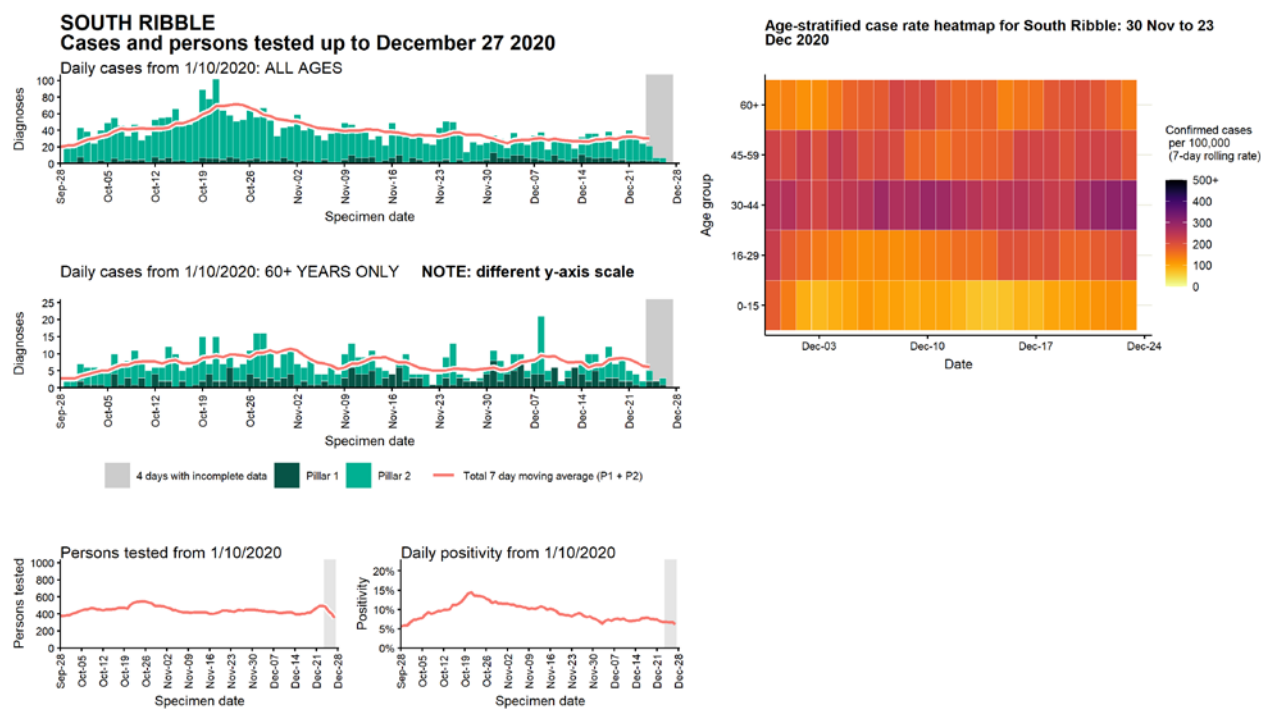


Age-stratified case rate heatmap for South Lakeland: 30 Nov to 23 Dec 2020



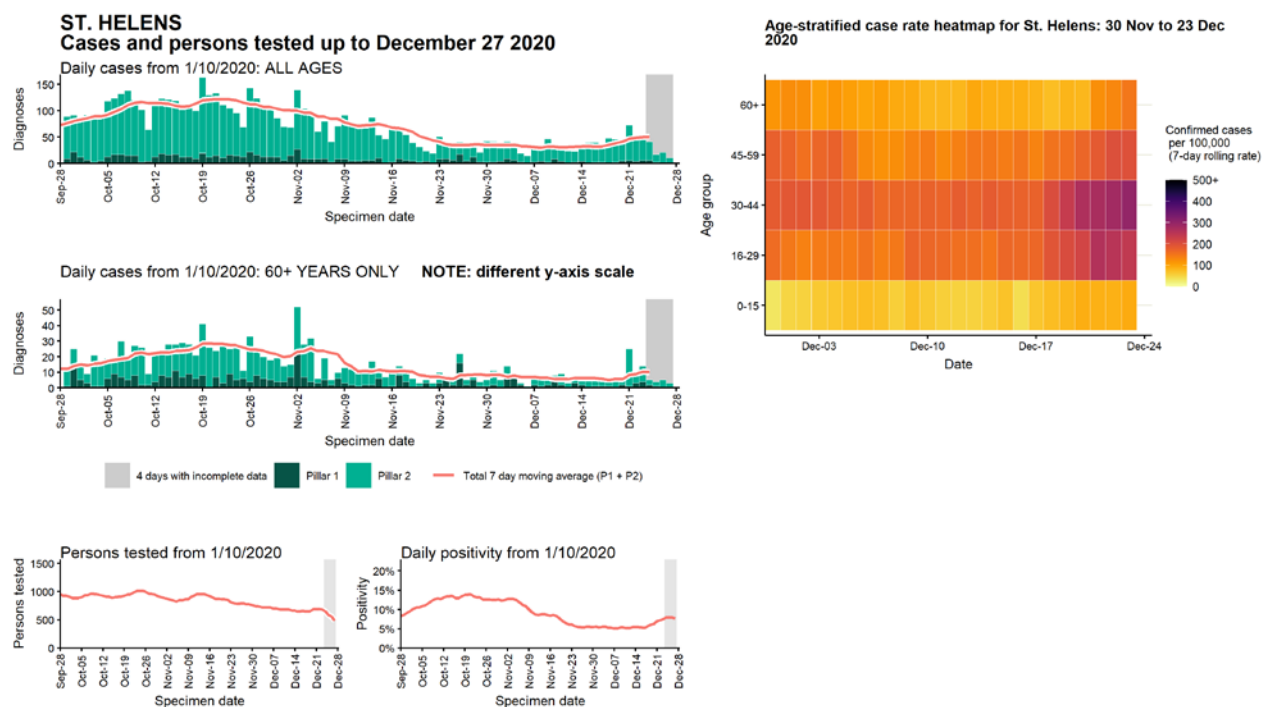
Data from SGSS. Produced by Outbreak Surveillance Team, PHE

Case numbers, testing numbers and positivity, South Ribble : 01 Sep to 27 Dec 2020



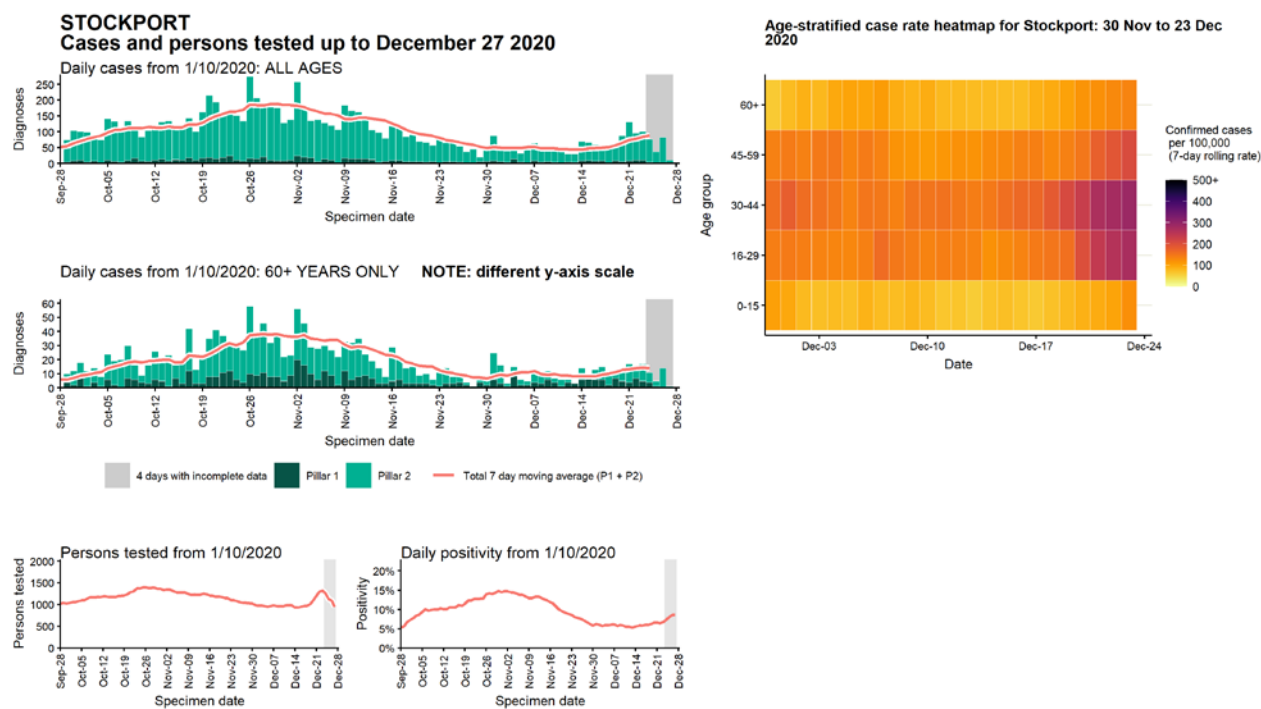
Data from SGSS. Produced by Outbreak Surveillance Team, PHE

Case numbers, testing numbers and positivity, St. Helens : 01 Sep to 27 Dec 2020



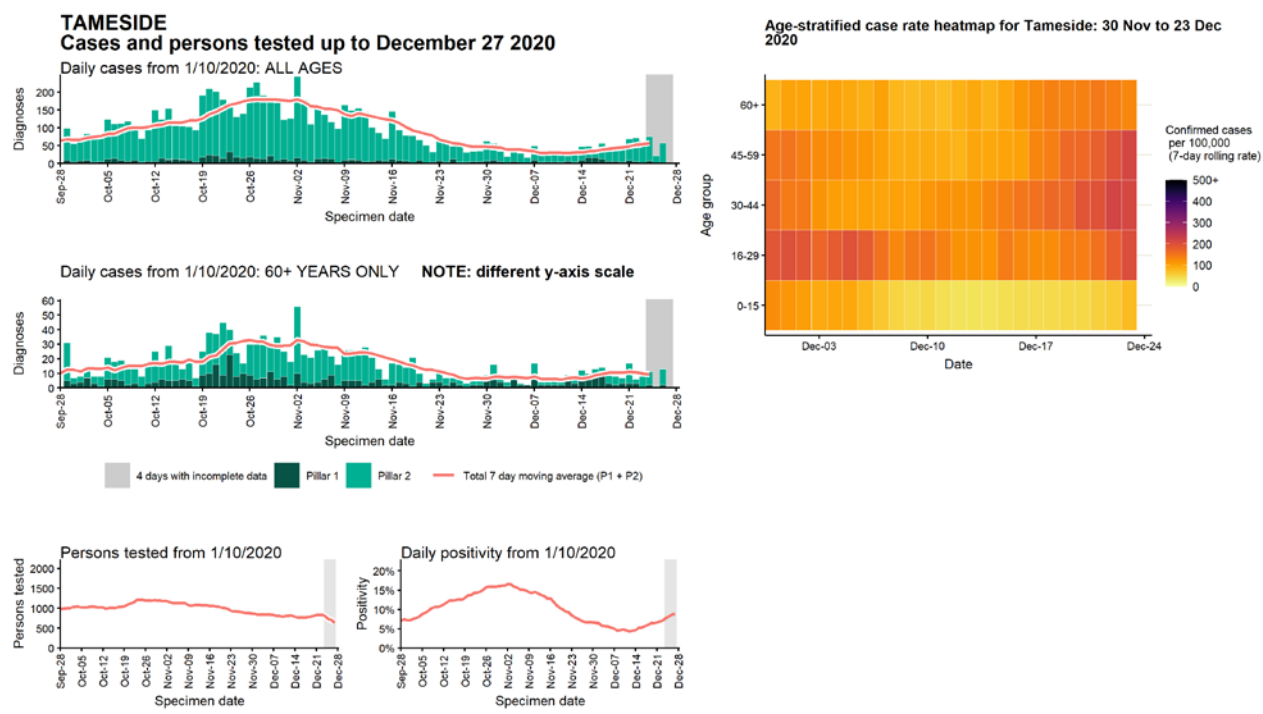
Data from SGSS. Produced by Outbreak Surveillance Team, PHE

Case numbers, testing numbers and positivity, Stockport : 01 Sep to 27 Dec 2020



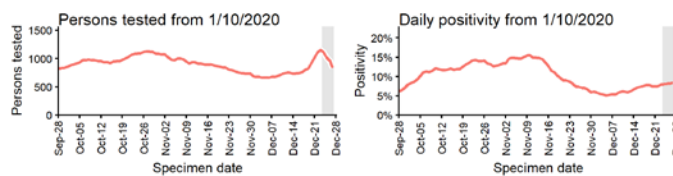
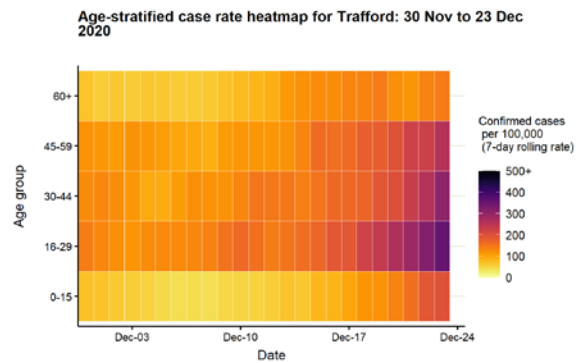
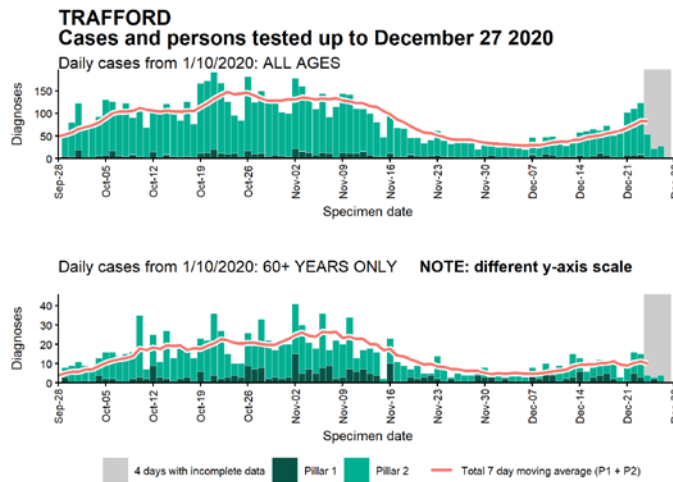
Data from SGSS. Produced by Outbreak Surveillance Team, PHE

Case numbers, testing numbers and positivity, Tameside : 01 Sep to 27 Dec 2020



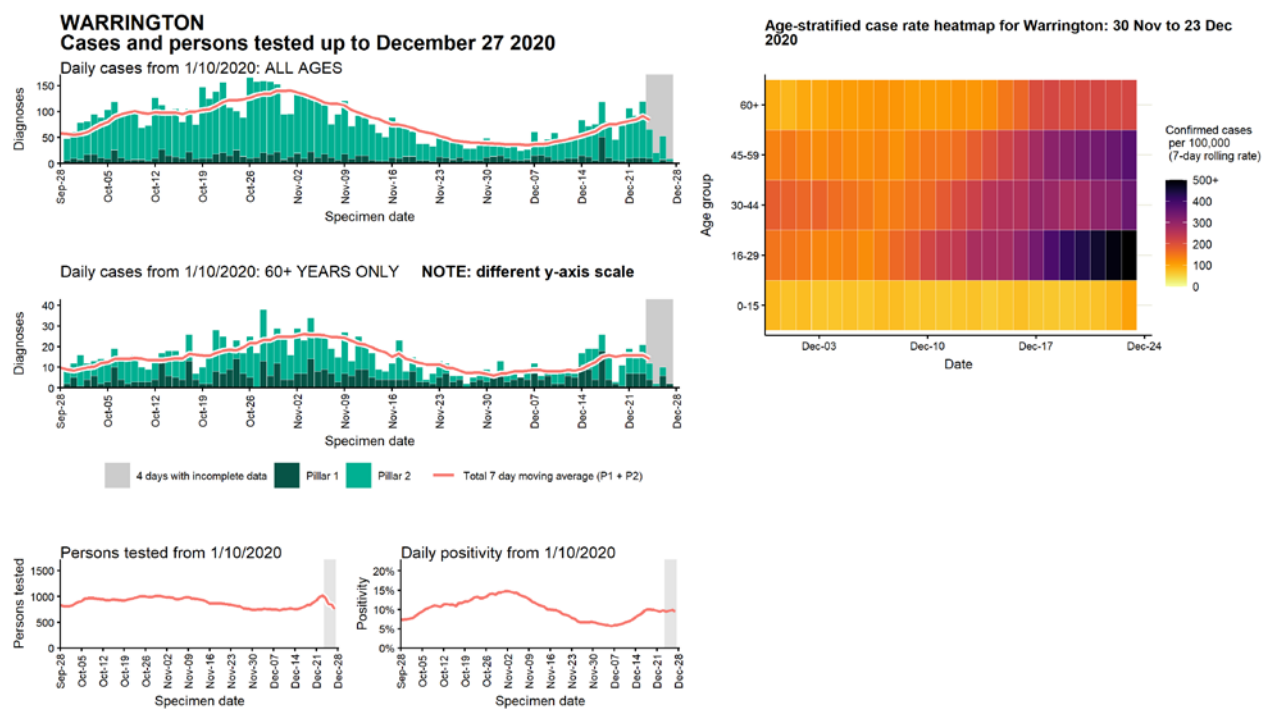
Data from SGSS. Produced by Outbreak Surveillance Team, PHE

Case numbers, testing numbers and positivity, Trafford : 01 Sep to 27 Dec 2020



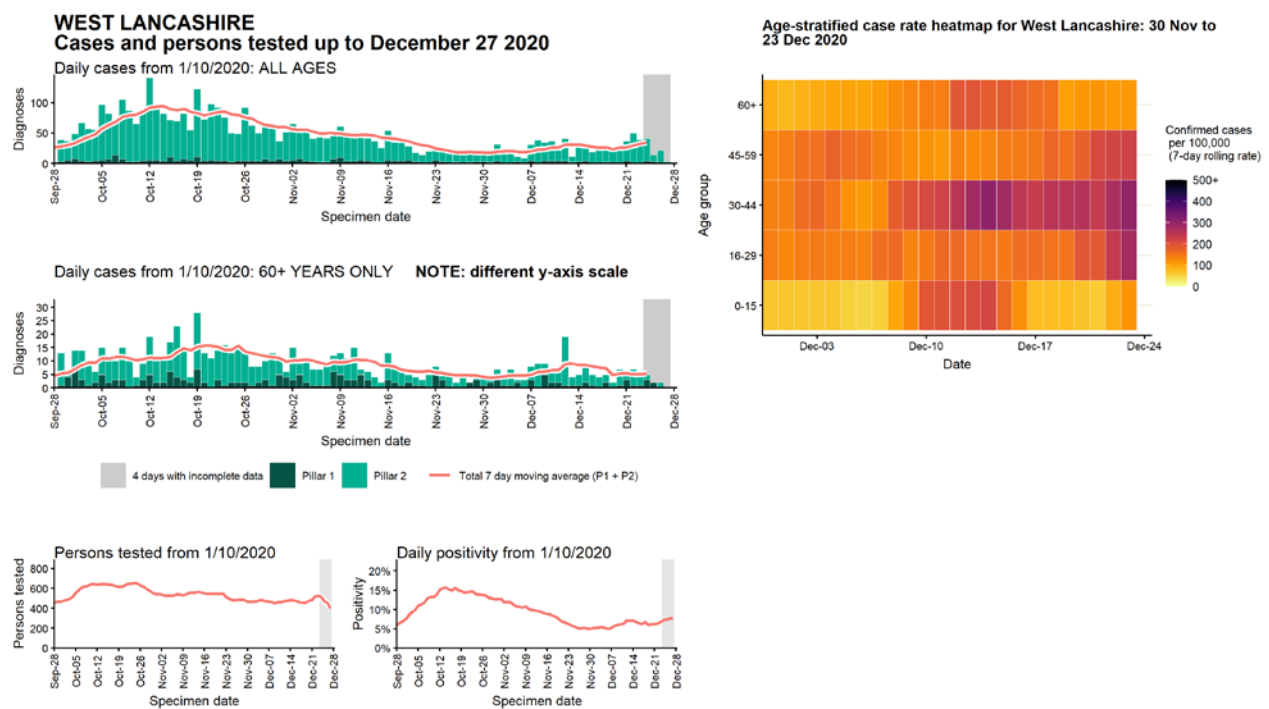
Data from SGSS. Produced by Outbreak Surveillance Team, PHE

Case numbers, testing numbers and positivity, Warrington : 01 Sep to 27 Dec 2020



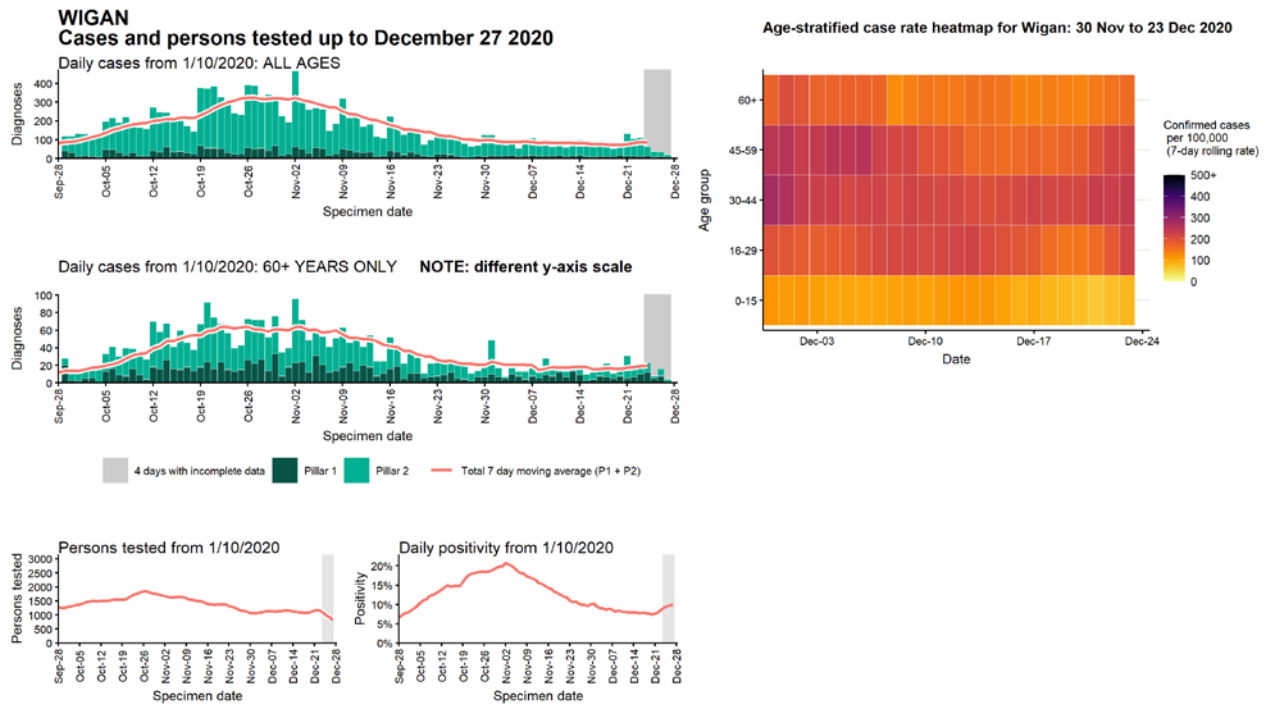
Data from SGSS. Produced by Outbreak Surveillance Team, PHE

Case numbers, testing numbers and positivity, West Lancashire : 01 Sep to 27 Dec 2020



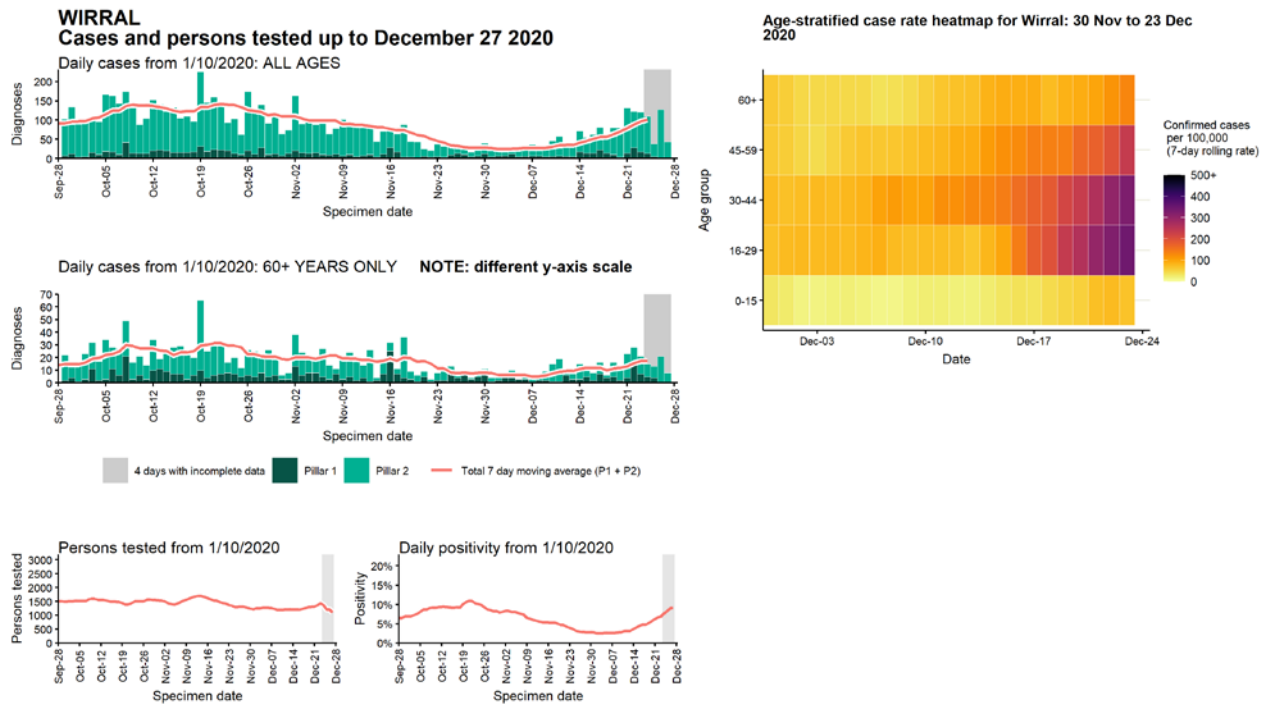
Data from SGSS. Produced by Outbreak Surveillance Team, PHE

Case numbers, testing numbers and positivity, Wigan : 01 Sep to 27 Dec 2020



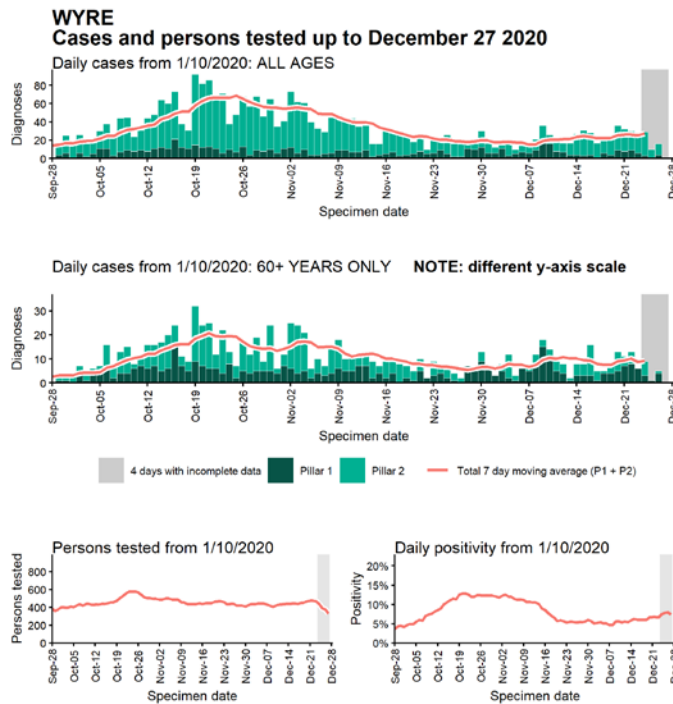
Data from SGSS. Produced by Outbreak Surveillance Team, PHE

Case numbers, testing numbers and positivity, Wirral : 01 Sep to 27 Dec 2020

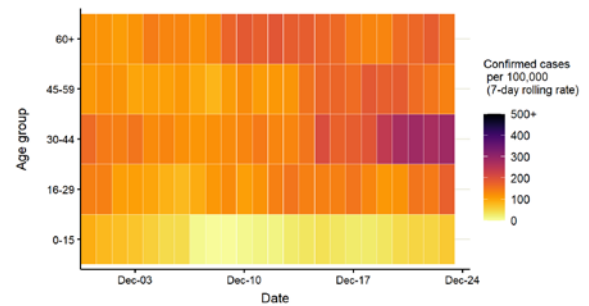


Data from SGSS. Produced by Outbreak Surveillance Team, PHE

Case numbers, testing numbers and positivity, Wyre : 01 Sep to 27 Dec 2020



Age-stratified case rate heatmap for Wyre: 30 Nov to 23 Dec 2020



Data from SGSS. Produced by Outbreak Surveillance Team, PHE

© Crown copyright 2020

www.gov.uk/dhsc

This publication is licensed under the terms of the Open Government Licence v3.0 except where otherwise stated. To view this licence, visit nationalarchives.gov.uk/doc/open-government-licence/version/3

Where we have identified any third party copyright information you will need to obtain permission from the copyright holders concerned.

