



Public Health
England

NHS

Test and Trace

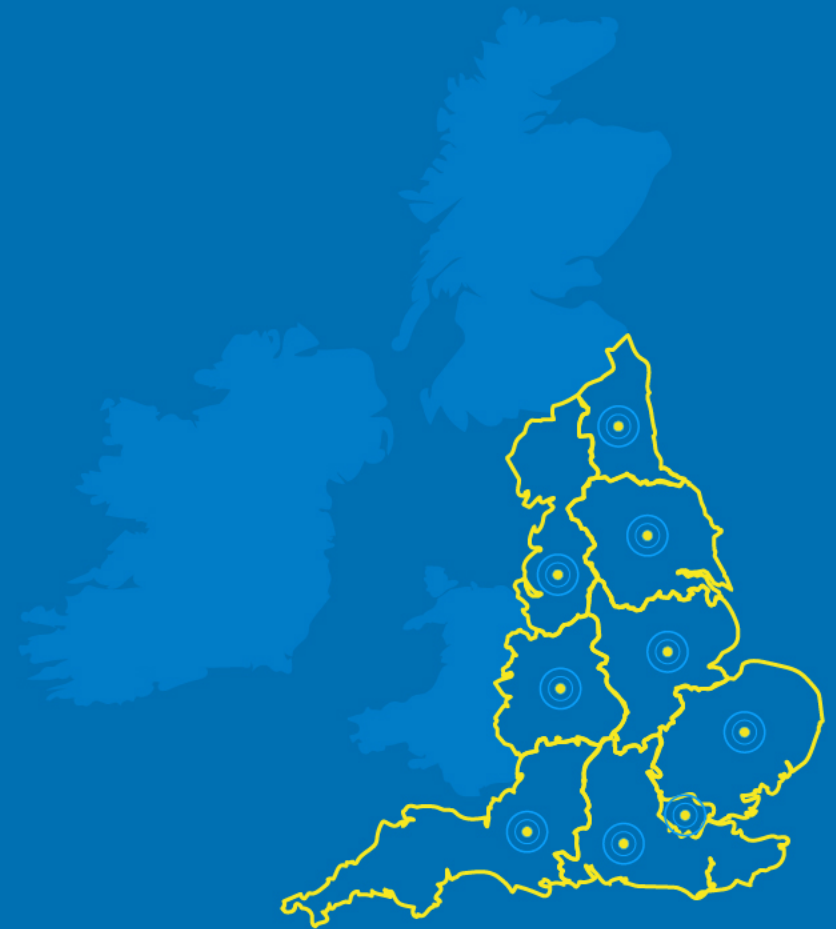
CORONAVIRUS

London, South East, East of England Briefing

Situation Report

Main Body

date: 14 December 2020



Pack Content

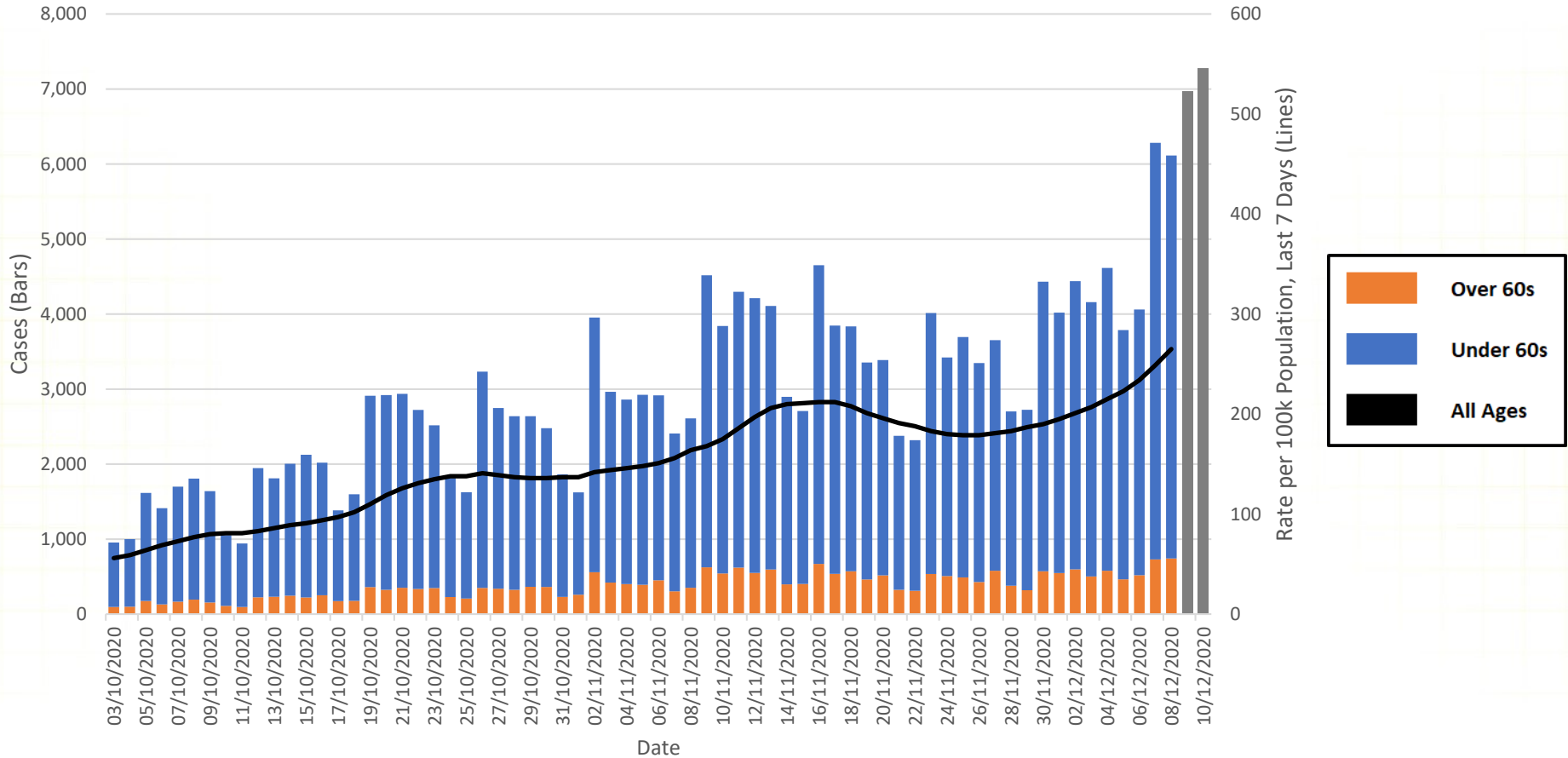
| Region | Area | Slide |
|------------------------|-------------------------------------|-------|
| <u>London</u> | London | 5 |
| <u>East of England</u> | Essex, Thurrock and Southend-on-Sea | 23 |
| | Hertfordshire | |

Overall situation update

- **Rapidly increasing case rates have been reported in London, Essex and Hertfordshire over the last few days.**
- In London there have been over 4,700 cases so far reported from people who booked tests on the 10th December alone, up from a daily average of c.2,400 at the end of national restrictions.
- In Hertfordshire there have over 400 cases so far reported from people who booked tests on the 10th December, up from a daily average of c.275 at the end of national restrictions. The majority of this increase is in the south of the county, which adjoins London.
- In Essex, infection rates have been continually increasing since the end of national restrictions and by 9th December there were over 850 cases; more than double the average a week previously. The highest rates are in the south and west of the county, closest to London
- These increases are seen in the most recent data, some of which is not yet complete and will be revised upwards as more tests are reported. This sudden increase in cases started from around the 7th December and thus reflects infections that took place a few days earlier, around the end of national restrictions.
- COVID-19 positive inpatients in general and acute beds in London are rising even before this latest increase in cases. The rapid rise in infection rates across this region will lead to increased hospital admissions. Admissions have not dropped as experienced elsewhere in the country during national restrictions. All of London's hospitals are currently affected, with highest pressure being felt in North East London.
- Across the regions being escalated to Tier 3 and including Kent, eight NHS Trusts have already postponed electives.

Cases and Case Rates in parts of South East England

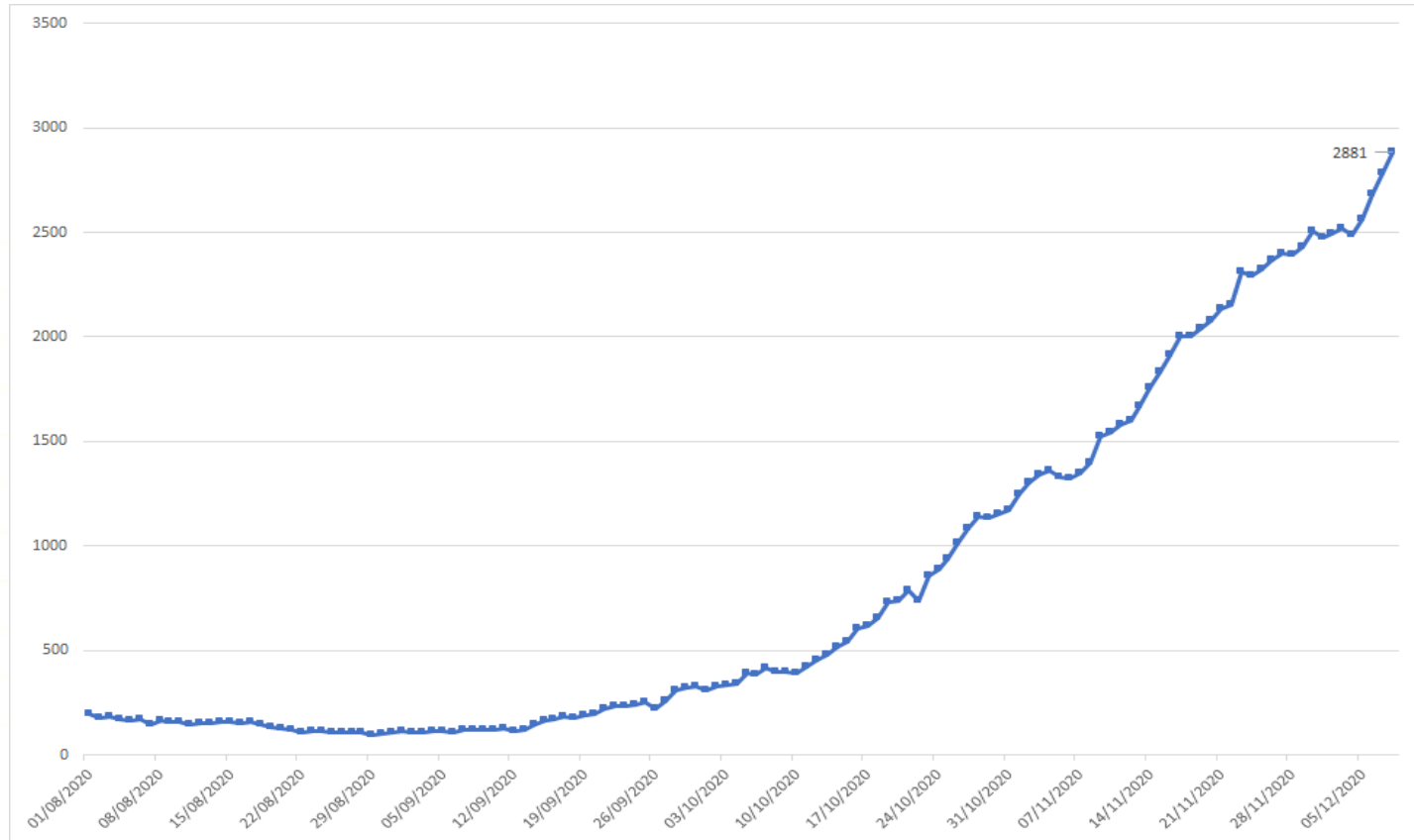
CASES AND CASE RATES IN LONDON AND PARTS OF ESSEX, KENT AND HERTFORDSHIRE



Source: <https://coronavirus.data.gov.uk/>

*Data for the last two days is not yet complete and subject to revision.

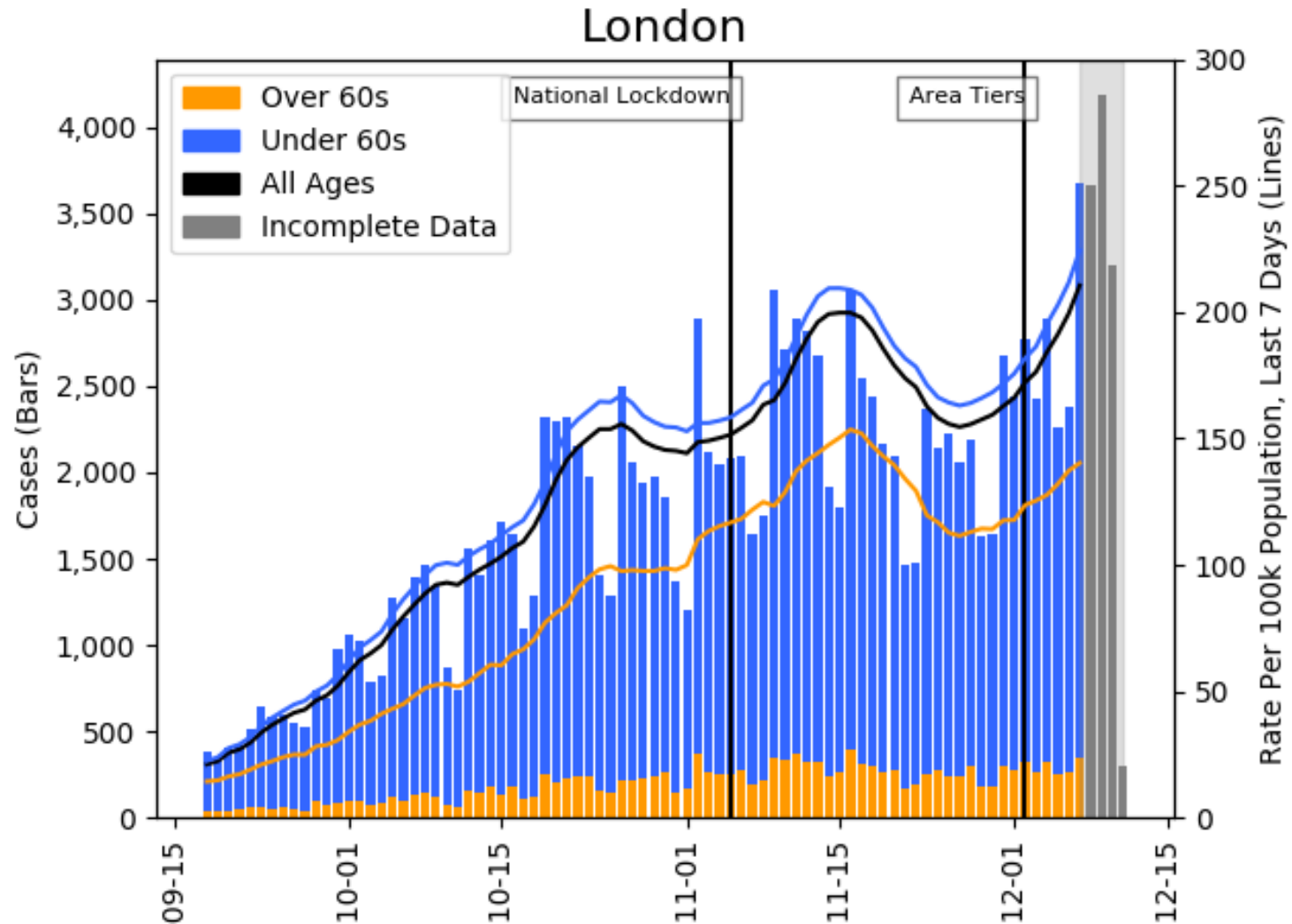
Covid positive occupied beds in London and the surrounding areas



Includes all people in an NHS acute trust bed with a positive test for COVID-19. Areas included: Mid and South Essex STP; Bedfordshire, Luton And Milton Keynes STP; Hertfordshire and West Essex STP; Kent and Medway STP; Our Healthier South East London STP; East London Health & Care Partnership STP; North London Partners In Health & Care STP; North West London Health & Care Partnership STP; South West London Health & Care Partnership STP
Source: <https://www.england.nhs.uk/statistics/statistical-work-areas/covid-19-hospital-activity/>

London

London : Summary case count and case rate charts to 11 Dec 2020



Stacked bars show the total number of cases by specimen date (left-hand axis). Solid lines show 7-day-average rolling case rates per 100k population (right-hand axis). The most recent four days of data are incomplete and shaded in grey.

London

Case rate and positivity by local authority: 2 Dec to 8 Dec 2020

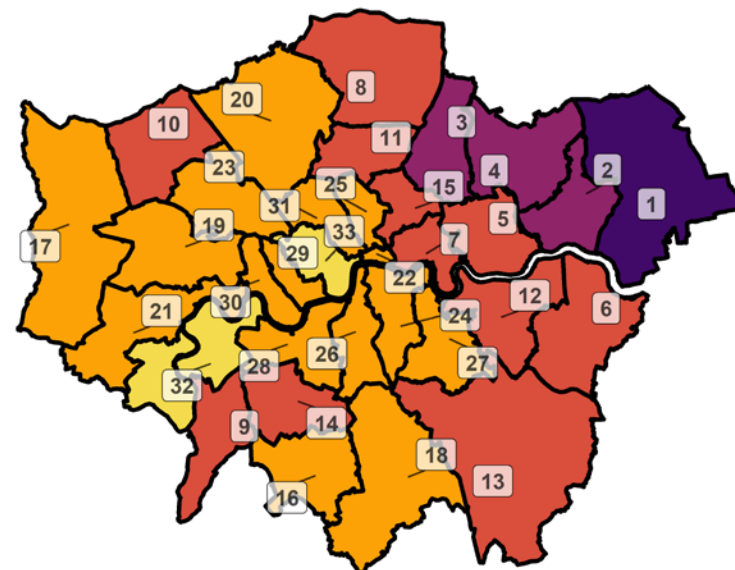
| UTLA | LTLA Name | Population ('000s) | Confirmed cases (last 7-days) | Individuals tested per day per 100,000 population (7 day moving average) | | Indicator 1: Case rate per 100,000 population (weekly) | | Indicator 2: Case rate per 100,000 population aged 60 years and over (weekly) | | Indicator 3: Percentage change in Case rate per 100,000 from previous week | Indicator 4: Percentage individuals test positive (weekly) | | Current Local Covid Alert Level |
|------------------------|------------------------|--------------------|-------------------------------|--|------|--|-------|---|-------|--|--|--------|---------------------------------|
| Havering | Havering | 260 | 1,222 | 467 | ↑ 42 | 471 | ↑ 154 | 314 | ↑ 93 | 48% | 16% | ↑ 3.5 | High |
| Redbridge | Redbridge | 305 | 1,109 | 420 | ↑ 39 | 363 | ↑ 61 | 237 | ↑ 28 | 20% | 14% | ↑ 0.9 | High |
| Barking and Dagenham | Barking and Dagenham | 213 | 777 | 428 | ↑ 35 | 365 | ↑ 80 | 303 | ↑ 83 | 28% | 14% | ↑ 1.7 | High |
| Bexley | Bexley | 248 | 727 | 468 | ↑ 44 | 293 | ↑ 63 | 184 | ↑ 39 | 27% | 10% | ↑ 1.3 | High |
| Tower Hamlets | Tower Hamlets | 325 | 930 | 359 | ↑ 61 | 286 | ↑ 75 | 215 | ↑ 26 | 35% | 13% | ↑ 1.5 | High |
| Newham | Newham | 353 | 1,084 | 345 | ↑ 33 | 307 | ↑ 65 | 231 | ↓ -28 | 27% | 14% | ↑ 1.5 | High |
| Ealing | Ealing | 342 | 618 | 404 | ↑ 41 | 181 | ↑ 16 | 100 | ↓ -38 | 10% | 7% | ↓ -0.4 | High |
| Enfield | Enfield | 334 | 1,017 | 418 | ↑ 70 | 305 | ↑ 130 | 137 | ↑ 37 | 74% | 11% | ↑ 3.0 | High |
| Hillingdon | Hillingdon | 307 | 634 | 472 | ↑ 73 | 207 | ↑ 47 | 173 | ↑ 50 | 29% | 7% | ↑ 0.3 | High |
| Brent | Brent | 330 | 611 | 390 | ↑ 39 | 185 | ↑ 32 | 130 | ↑ 17 | 21% | 8% | ↑ 0.5 | High |
| Hounslow | Hounslow | 272 | 507 | 390 | ↑ 34 | 187 | ↑ 38 | 150 | ↑ 50 | 25% | 8% | ↑ 0.7 | High |
| Greenwich | Greenwich | 288 | 648 | 412 | ↑ 40 | 225 | ↑ 74 | 140 | ↑ 29 | 49% | 8% | ↑ 1.8 | High |
| Merton | Merton | 207 | 491 | 378 | ↑ 30 | 238 | ↑ 56 | 176 | ↑ 70 | 31% | 10% | ↑ 1.4 | High |
| Waltham Forest | Waltham Forest | 277 | 1,013 | 418 | ↑ 60 | 366 | ↑ 123 | 258 | ↑ 80 | 51% | 14% | ↑ 3.0 | High |
| Harrow | Harrow | 251 | 615 | 418 | ↑ 51 | 245 | ↑ 84 | 133 | ↑ 37 | 52% | 9% | ↑ 2.2 | High |
| Hammersmith and Fulham | Hammersmith and Fulham | 185 | 253 | 421 | ↑ 72 | 137 | ↑ 39 | 61 | ↑ 25 | 40% | 5% | ↑ 0.4 | High |
| City of London + | City of London + | 10 | 17 | 367 | ↑ 7 | 175 | ↓ -31 | 0 | ↑ 0 | -15% | 8% | ↓ -0.6 | High |
| Hackney | Hackney | 281 | 632 | 356 | ↑ 46 | 225 | ↑ 73 | 154 | ↑ 6 | 48% | 10% | ↑ 1.9 | High |
| Barnet | Barnet | 396 | 767 | 402 | ↑ 42 | 194 | ↑ 39 | 134 | ↑ 8 | 25% | 8% | ↑ 0.9 | High |
| Kingston upon Thames | Kingston upon Thames | 178 | 452 | 444 | ↑ 30 | 255 | ↑ 55 | 110 | ↓ -9 | 27% | 9% | ↑ 1.4 | High |
| Croydon | Croydon | 387 | 763 | 393 | ↑ 23 | 197 | ↑ 52 | 132 | ↑ 12 | 36% | 8% | ↑ 1.3 | High |
| Bromley | Bromley | 332 | 748 | 384 | ↑ 33 | 225 | ↑ 57 | 105 | ↑ 35 | 34% | 9% | ↑ 1.5 | High |
| Sutton | Sutton | 206 | 442 | 429 | ↑ 38 | 214 | ↑ 69 | 129 | ↑ 26 | 48% | 8% | ↑ 1.9 | High |
| Lambeth | Lambeth | 326 | 503 | 361 | ↑ 43 | 154 | ↑ 40 | 96 | ↑ 25 | 35% | 7% | ↑ 0.9 | High |
| Haringey | Haringey | 269 | 614 | 384 | ↑ 68 | 229 | ↑ 64 | 143 | ↑ 67 | 39% | 9% | ↑ 0.9 | High |
| Islington | Islington | 242 | 350 | 372 | ↑ 58 | 144 | ↑ 27 | 134 | ↑ 57 | 23% | 6% | ↓ -0.2 | High |
| Wandsworth | Wandsworth | 330 | 512 | 409 | ↑ 83 | 155 | ↑ 41 | 126 | ↑ 77 | 35% | 6% | ↑ 0.4 | High |
| Kensington and Chelsea | Kensington and Chelsea | 156 | 210 | 372 | ↑ 67 | 135 | ↑ 33 | 60 | ↑ 6 | 32% | 6% | ↑ 0.2 | High |
| Westminster | Westminster | 261 | 279 | 324 | ↑ 64 | 107 | ↑ 13 | 66 | ↑ 5 | 13% | 5% | ↓ -0.7 | High |
| Lewisham | Lewisham | 306 | 514 | 359 | ↑ 40 | 168 | ↑ 56 | 114 | ↑ 2 | 50% | 7% | ↑ 1.7 | High |
| Richmond upon Thames | Richmond upon Thames | 198 | 228 | 382 | ↑ 63 | 115 | ↑ 35 | 48 | ↓ -7 | 44% | 5% | ↑ 0.4 | High |
| Southwark | Southwark | 319 | 522 | 396 | ↑ 60 | 164 | ↑ 55 | 105 | ↑ 13 | 51% | 6% | ↑ 1.2 | High |
| Camden | Camden | 270 | 326 | 348 | ↑ 77 | 121 | ↑ 27 | 53 | ↓ -2 | 29% | 5% | ↓ -0.2 | High |

London: Case rate map by local authority: 30 Nov to 06 Dec 2020

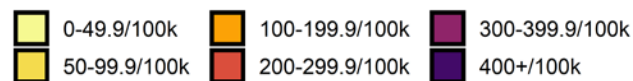
London
COVID-19 cases: 30 Nov to 06 Dec 2020
 Weekly case rates per 100,000 population by local authority

| Rank | Local Authority | Case Rate (per 100,000) | Number of cases (1 week) |
|------|----------------------|-------------------------|--------------------------|
| 1 | Havering | 400.7 | 1040 |
| 2 | Barking and Dagenham | 334.0 | 711 |
| 3 | Waltham Forest | 327.1 | 906 |
| 4 | Redbridge | 310.9 | 949 |
| 5 | Newham | 280.6 | 991 |
| 6 | Bexley | 276.7 | 687 |
| 7 | Tower Hamlets | 257.1 | 835 |
| 8 | Enfield | 252.3 | 842 |
| 9 | Kingston upon Thames | 242.2 | 430 |
| 10 | Harrow | 221.0 | 555 |
| 11 | Haringey | 212.2 | 570 |
| 12 | Greenwich | 208.7 | 601 |
| 13 | Bromley | 206.4 | 686 |
| 14 | Merton | 202.9 | 419 |
| 15 | Hackney | 202.8 | 570 |
| 16 | Sutton | 187.1 | 386 |

| Rank | Local Authority | Case Rate (per 100,000) | Number of cases (1 week) |
|------|------------------------|-------------------------|--------------------------|
| 17 | Hillingdon | 186.4 | 572 |
| 18 | Croydon | 181.3 | 701 |
| 19 | Ealing | 175.0 | 598 |
| 20 | Barnet | 174.8 | 692 |
| 21 | Hounslow | 165.7 | 450 |
| 22 | City of London | 164.6 | 16 |
| 23 | Brent | 156.2 | 515 |
| 24 | Southwark | 137.7 | 439 |
| 25 | Islington | 134.5 | 326 |
| 26 | Lambeth | 133.1 | 434 |
| 27 | Lewisham | 133.1 | 407 |
| 28 | Wandsworth | 130.7 | 431 |
| 29 | Kensington and Chelsea | 124.3 | 194 |
| 30 | Hammersmith and Fulham | 105.3 | 195 |
| 31 | Camden | 101.1 | 273 |
| 32 | Richmond upon Thames | 97.0 | 192 |
| 33 | Westminster | 93.8 | 245 |



Covid-19 rate by local authority

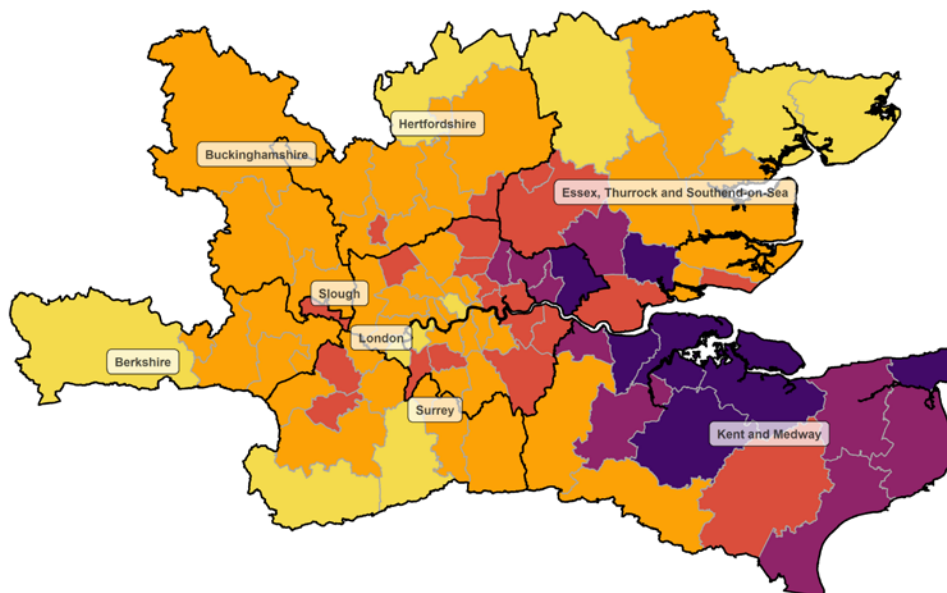


Data from SGSS; Pillar 1 and 2 testing. Figure by Outbreak Surveillance Team, Public Health England.

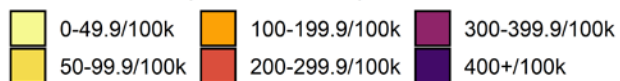
Contains National Statistics data including 2019 population estimates Â© Crown copyright and database right 2020

London: Extended area map by local authority: 30 Nov to 06 Dec 2020

London and surrounding areas
COVID-19 cases: 30 Nov to 06 Dec 2020
Weekly case rates per 100,000 population by local authority



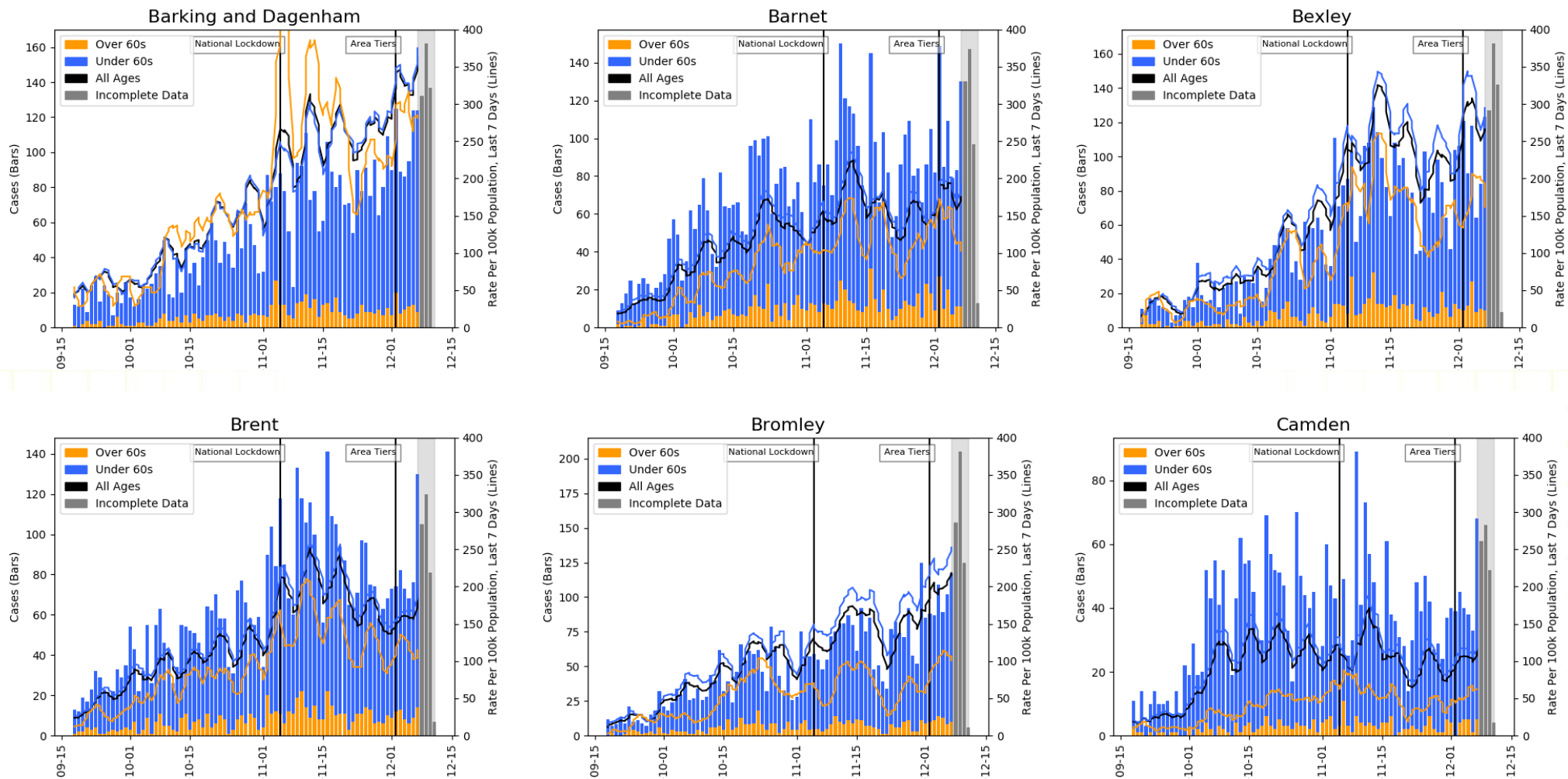
Covid-19 rate by local authority



Data from SGSS; Pillar 1 and 2 testing. Figure by Outbreak Surveillance Team, Public Health England.

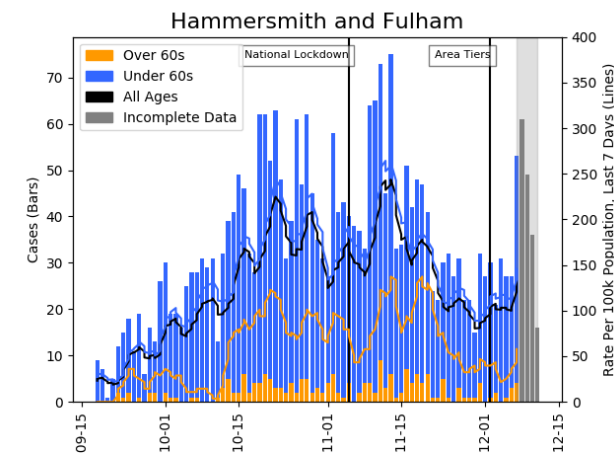
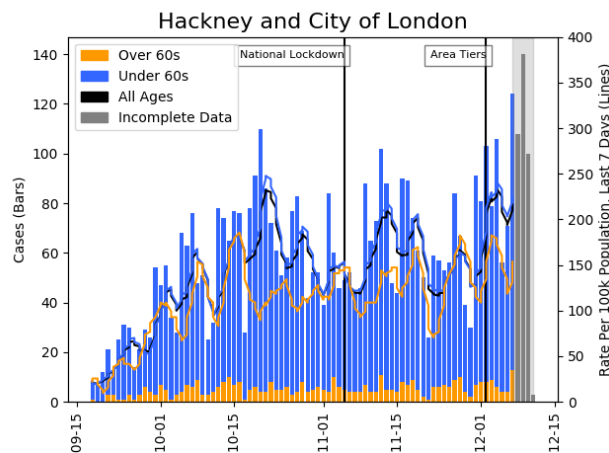
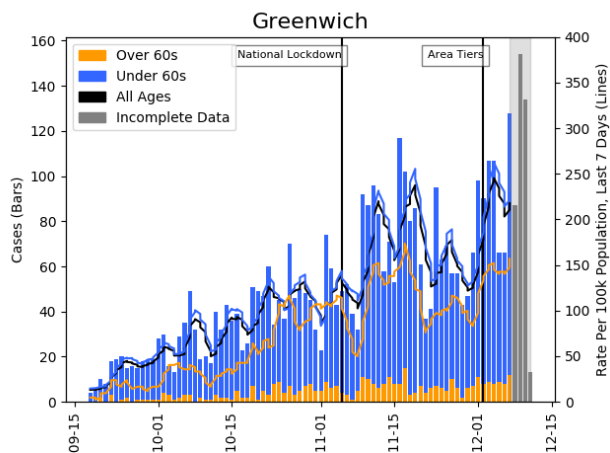
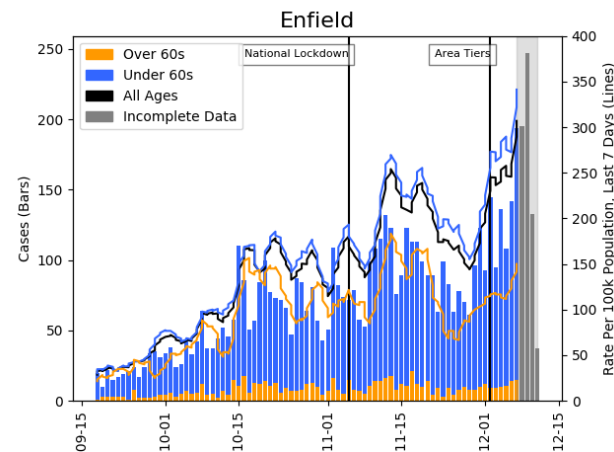
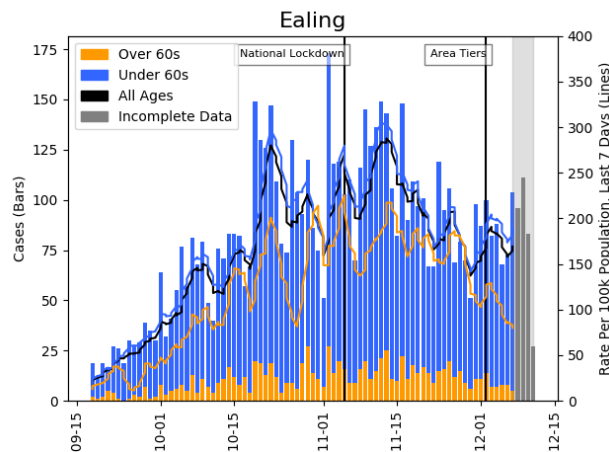
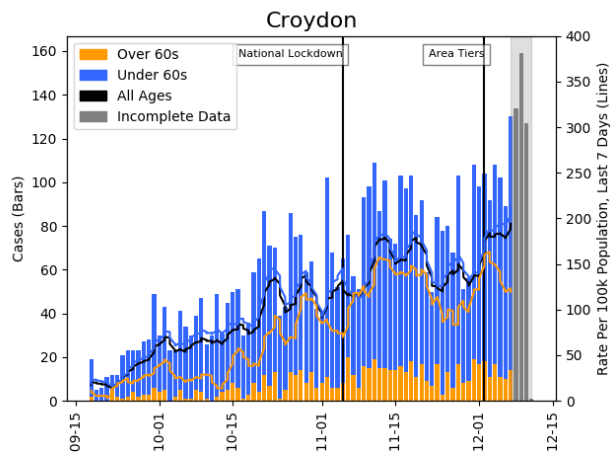
Contains National Statistics data including 2019 population estimates Â© Crown copyright and database right 2020

London: Summary case count and case rate charts to 11 Dec 2020



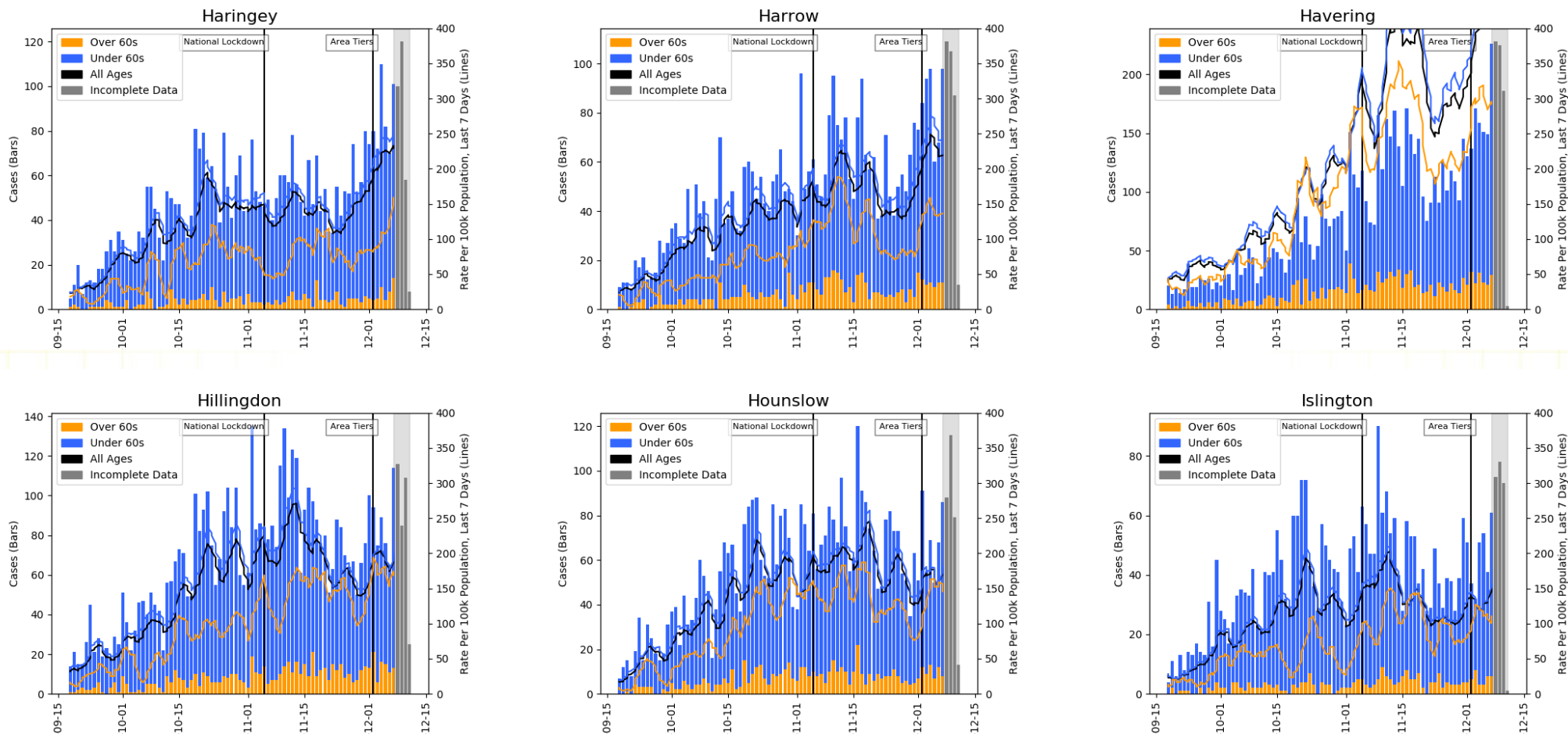
Stacked bars show the total number of cases by specimen date (left-hand axis). Solid lines show 7-day-average rolling case rates per 100k population (right-hand axis). The most recent four days of data are incomplete and shaded in grey.

London: Summary case count and case rate charts to 11 Dec 2020



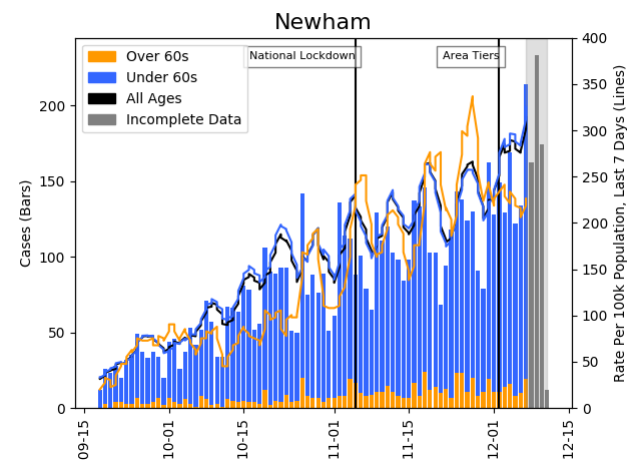
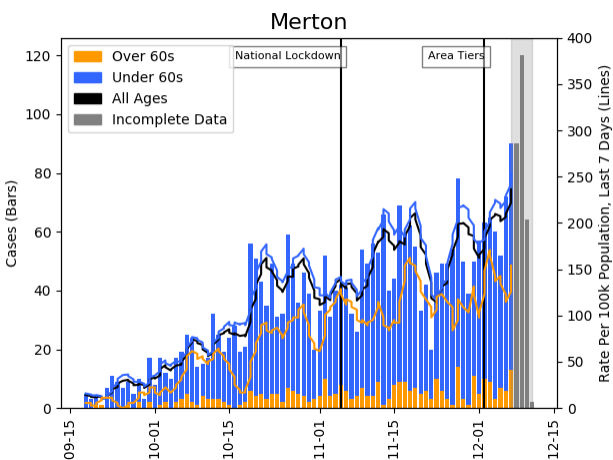
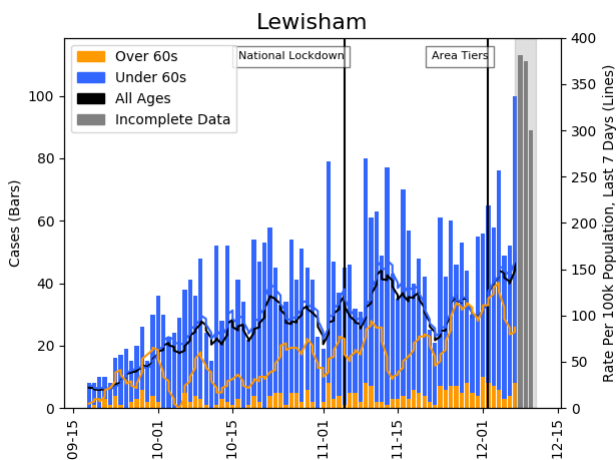
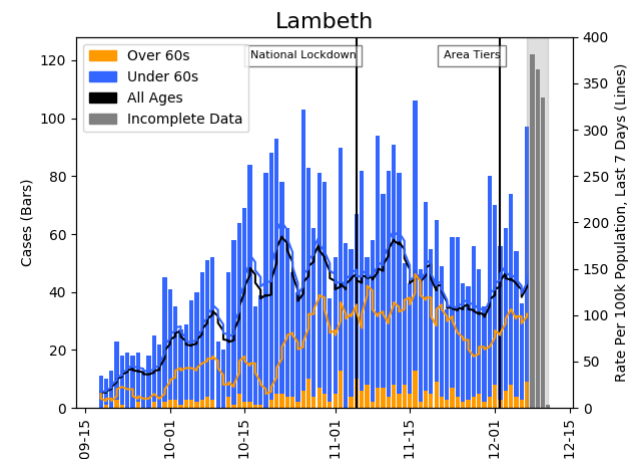
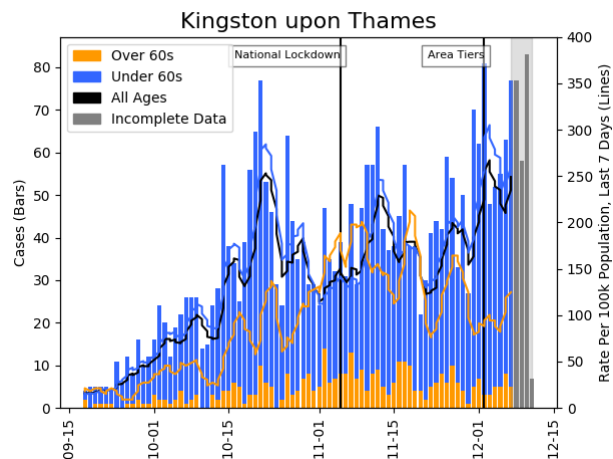
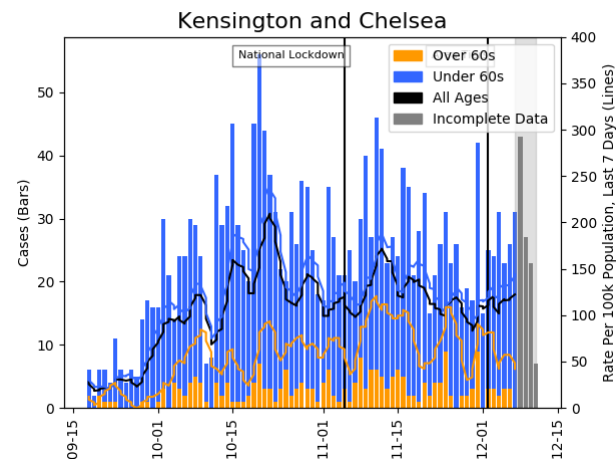
Stacked bars show the total number of cases by specimen date (left-hand axis). Solid lines show 7-day-average rolling case rates per 100k population (right-hand axis). The most recent four days of data are incomplete and shaded in grey.

London: Summary case count and case rate charts to 11 Dec 2020



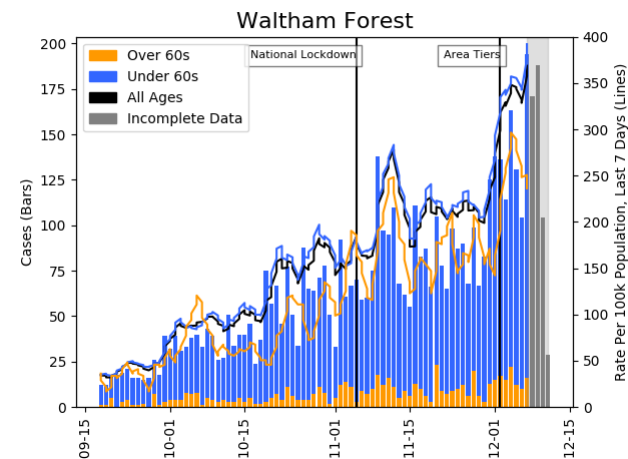
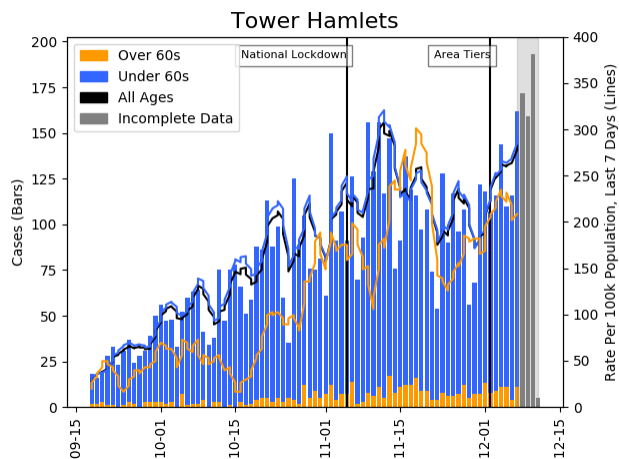
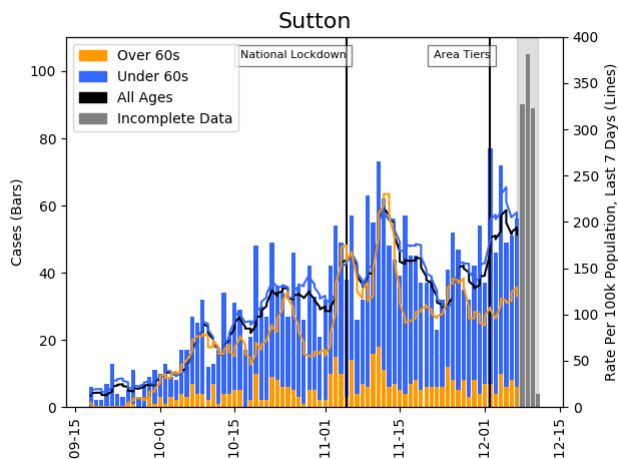
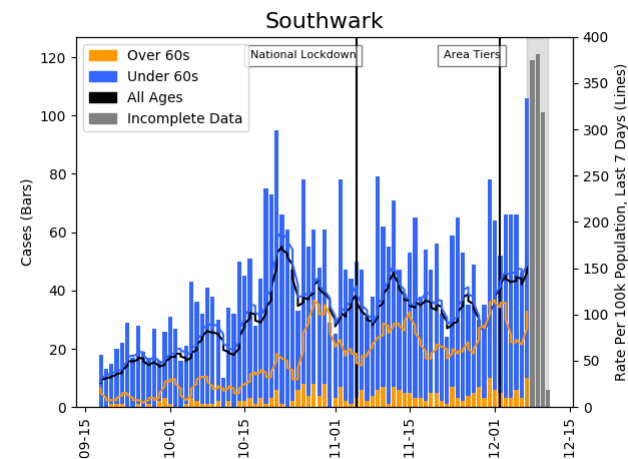
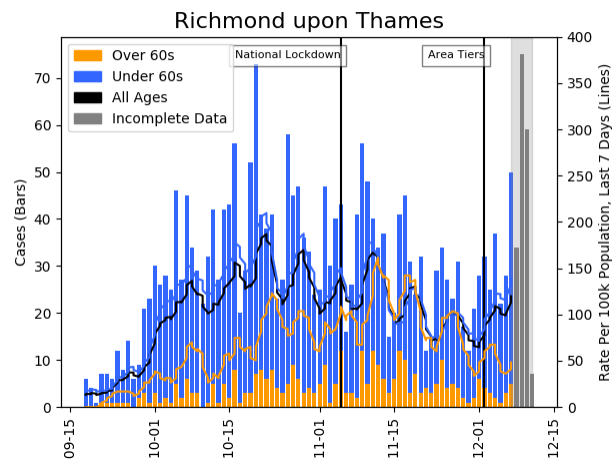
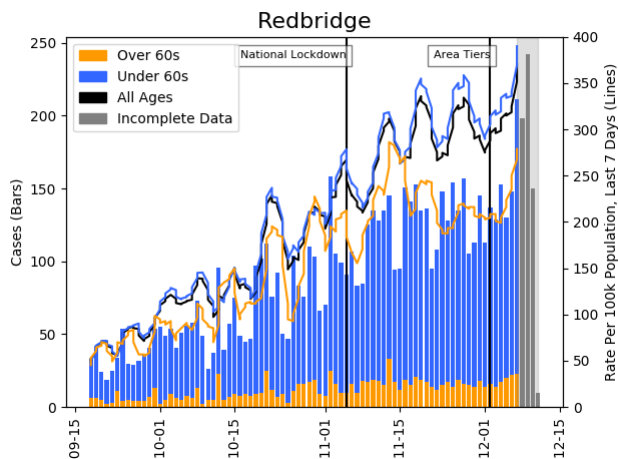
Stacked bars show the total number of cases by specimen date (left-hand axis). Solid lines show 7-day-average rolling case rates per 100k population (right-hand axis). The most recent four days of data are incomplete and shaded in grey.

London: Summary case count and case rate charts to 11 Dec 2020



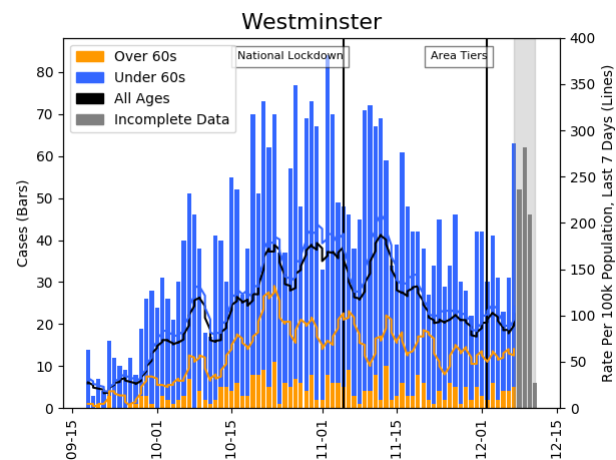
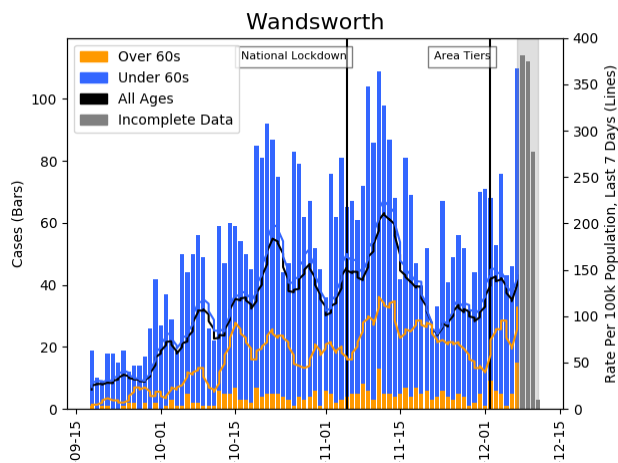
Stacked bars show the total number of cases by specimen date (left-hand axis). Solid lines show 7-day-average rolling case rates per 100k population (right-hand axis). The most recent four days of data are incomplete and shaded in grey.

London: Summary case count and case rate charts to 11 Dec 2020



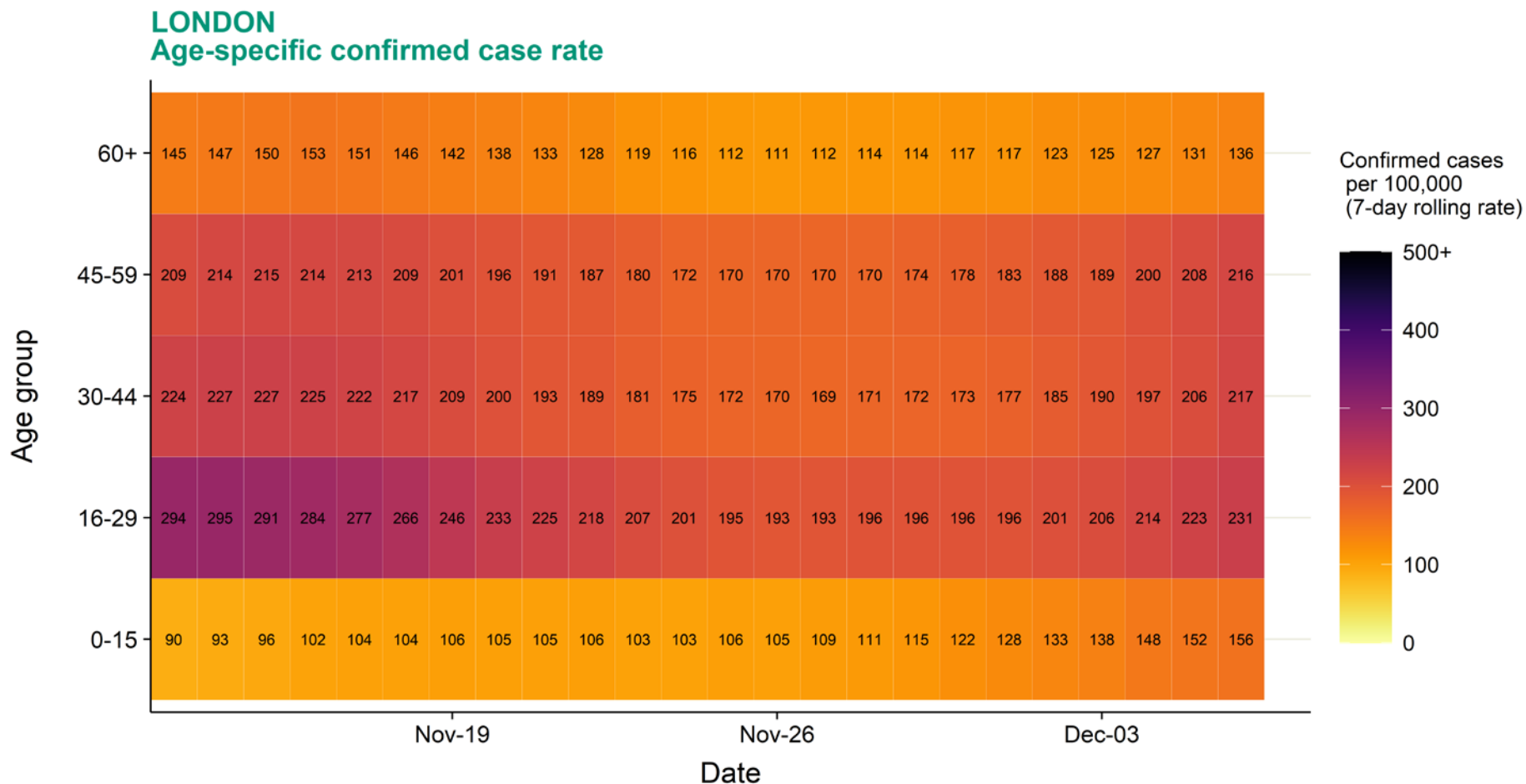
Stacked bars show the total number of cases by specimen date (left-hand axis). Solid lines show 7-day-average rolling case rates per 100k population (right-hand axis). The most recent four days of data are incomplete and shaded in grey.

London: Summary case count and case rate charts to 11 Dec 2020



Stacked bars show the total number of cases by specimen date (left-hand axis). Solid lines show 7-day-average rolling case rates per 100k population (right-hand axis). The most recent four days of data are incomplete and shaded in grey.

Case rate heatmap for London : 13 Nov to 06 Dec 2020



Source: Case data from SGSS. Produced by Outbreak Surveillance Team, PHE

Contains National Statistics data Â© Crown copyright and database right 2020

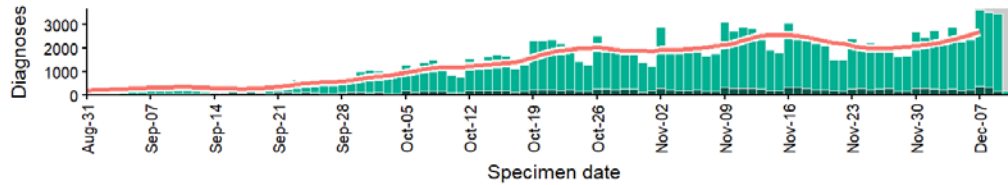
All of London

Regional case numbers, testing numbers and positivity : 01 Sep to 10 Dec 2020

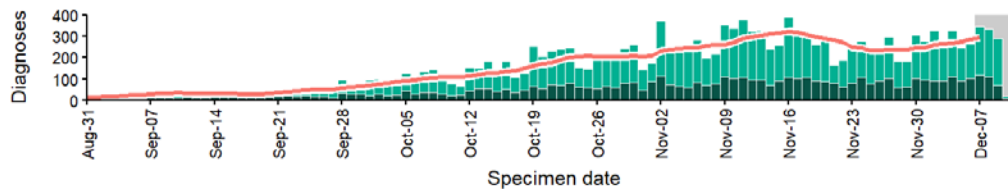
LONDON

Cases and persons tested up to December 10 2020

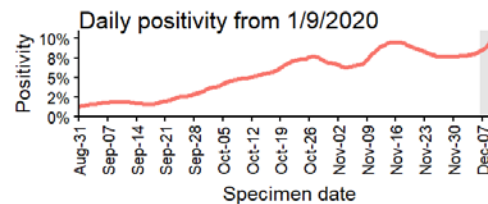
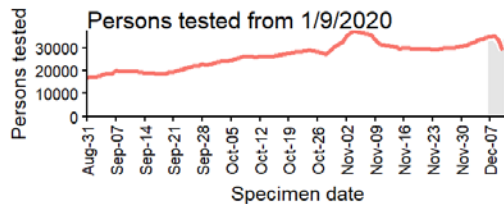
Regional daily cases from 1/9/2020: ALL AGES



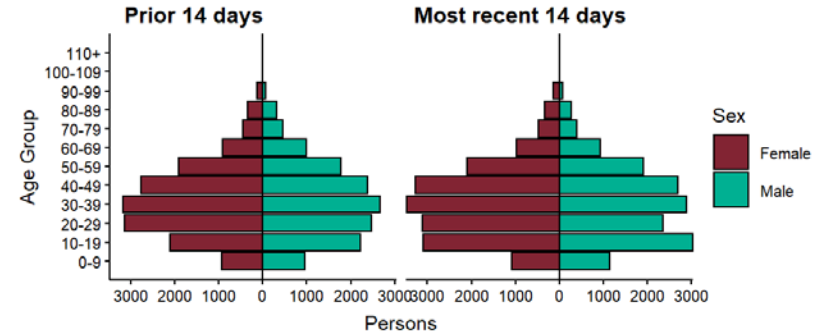
Regional daily cases from 1/9/2020: 60+ YEARS ONLY **NOTE: different y-axis scale**



4 days with incomplete data Pillar 1 Pillar 2 Total 7 day moving average (P1 + P2)



Age-sex pyramid for confirmed cases in past 14 days (November 27 2020 to December 10 2020) and prior 14 days (November 13 2020 to November 26 2020) 315 persons excluded due to missing gender or age.



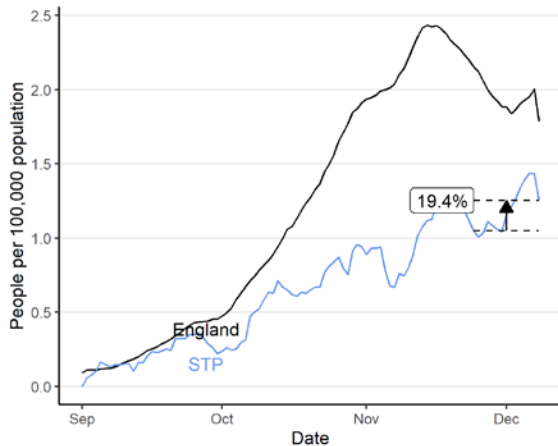
Data from SGSS. Produced by Outbreak Surveillance Team, PHE

Hospital Metrics: North London Partners in Health and Care

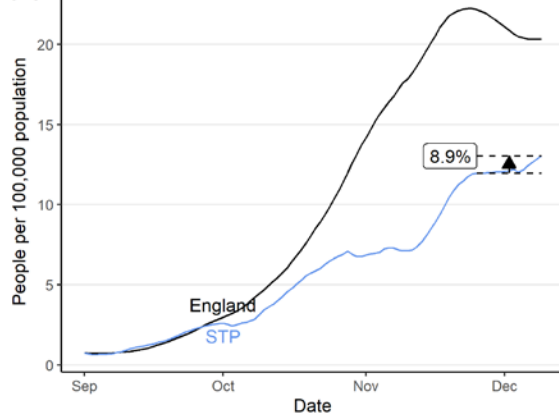
Hospital metrics: North London Partners in Health and Care

Time series plots use 7 day rolling averages across data. Vertical arrows show the percentage change for that STP in the last 14 days, with the percentage given.

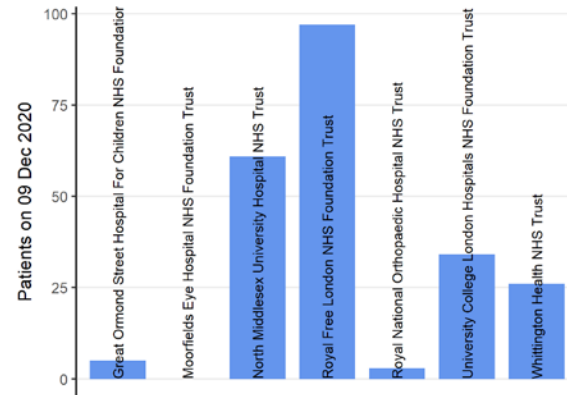
COVID-19 hospital admissions per 100,000 population



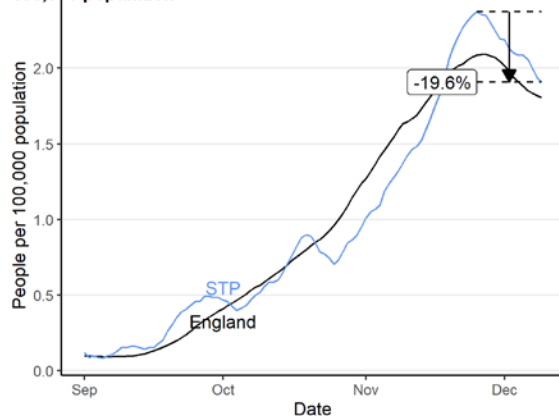
Total beds occupied by COVID-19 patients per 100,000 population



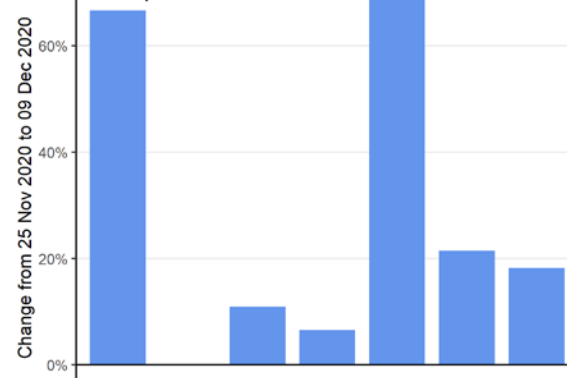
Total beds occupied by people with COVID-19 for specific trusts



Mechanical ventilation beds occupied by COVID-19 patients per 100,000 population



Change in last 14 days in total beds occupied by people with COVID-19 for specific trusts



Source: Data from NHS COVID-19 Hospital Activity publications, <https://www.england.nhs.uk/statistics/statistical-work-areas/covid-19-hospital-activity>, from 01 September 2020 to 09 December 2020. Produced by Joint Biosecurity Centre.

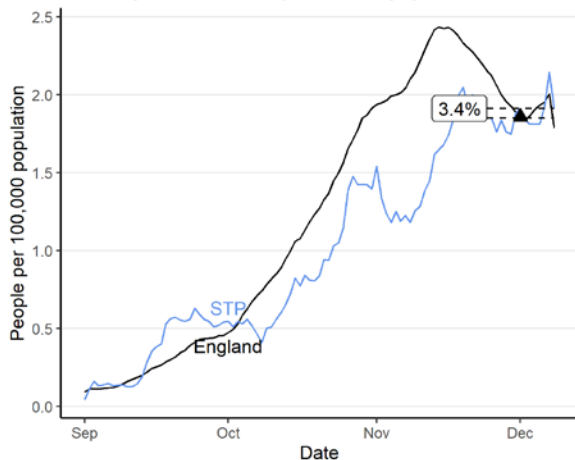
See Annex A for further information on Hospital Metrics

Hospital Metrics: East London Health and Care Partnership

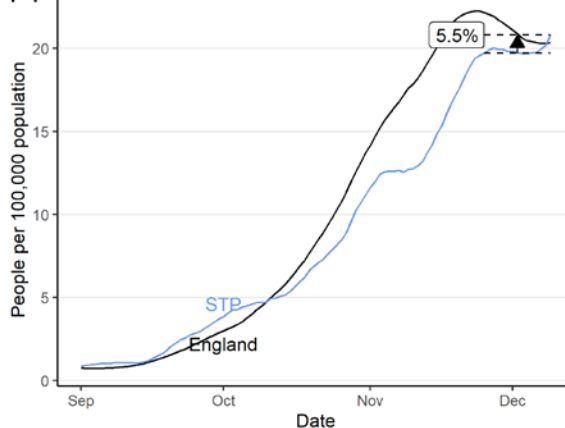
Hospital metrics: East London Health and Care Partnership

Time series plots use 7 day rolling averages across data. Vertical arrows show the percentage change for that STP in the last 14 days, with the percentage given.

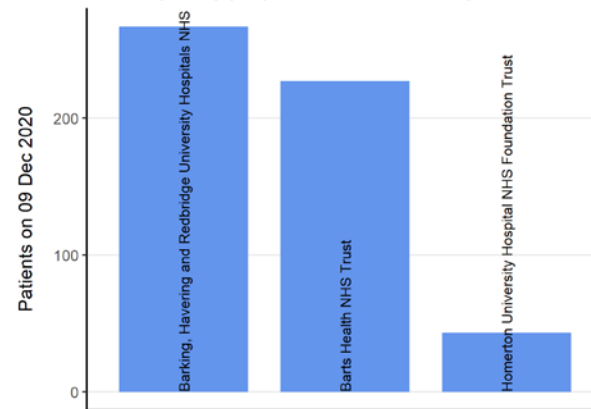
COVID-19 hospital admissions per 100,000 population



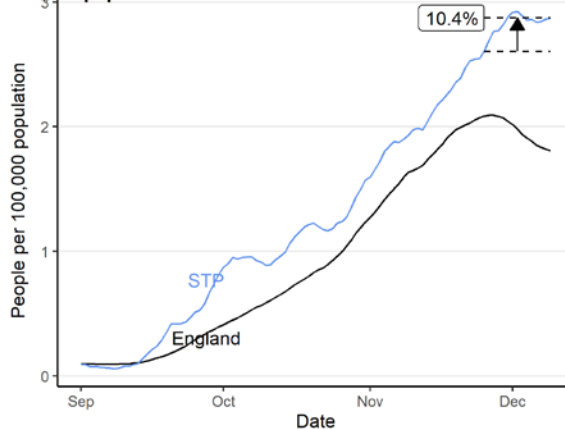
Total beds occupied by COVID-19 patients per 100,000 population



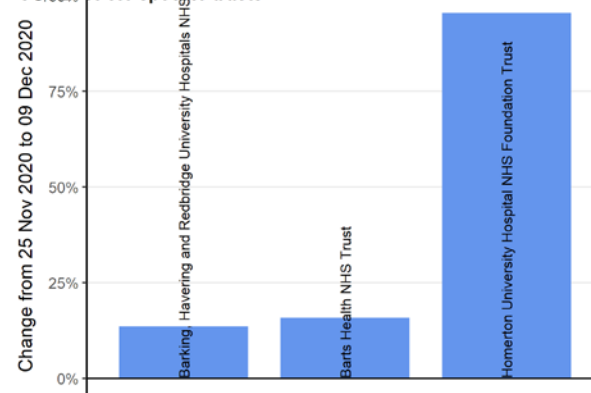
Total beds occupied by people with COVID-19 for specific trusts



Mechanical ventilation beds occupied by COVID-19 patients per 100,000 population



Change in last 14 days in total beds occupied by people with COVID-19 for specific trusts



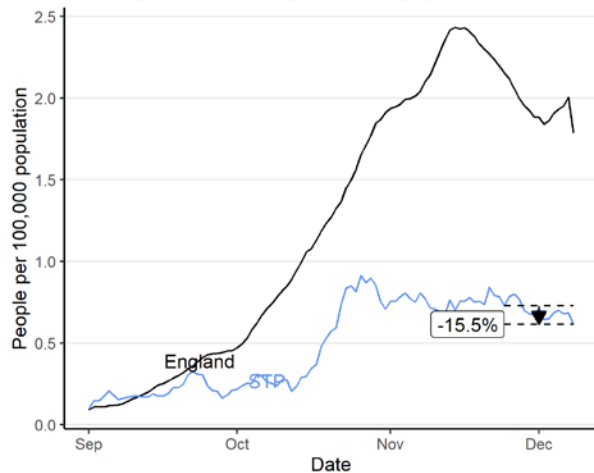
Source: Data from NHS COVID-19 Hospital Activity publications, <https://www.england.nhs.uk/statistics/statistical-work-areas/covid-19-hospital-activity/>, from 01 September 2020 to 09 December 2020. Produced by Joint Biosecurity Centre.

Hospital Metrics: Our Healthier South East London

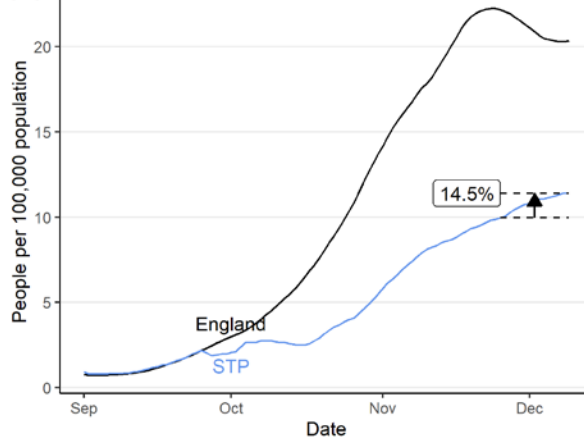
Hospital metrics: Our Healthier South East London

Time series plots use 7 day rolling averages across data. Vertical arrows show the percentage change for that STP in the last 14 days, with the percentage given.

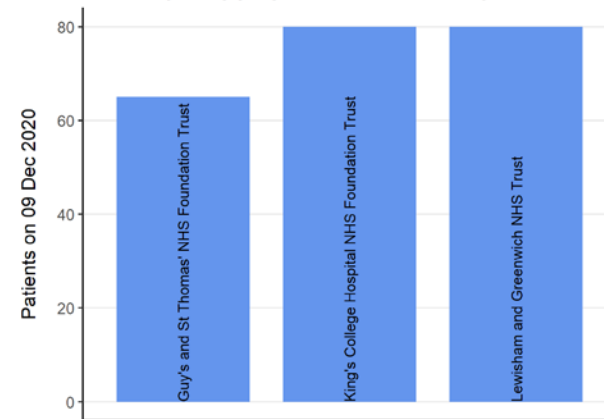
COVID-19 hospital admissions per 100,000 population



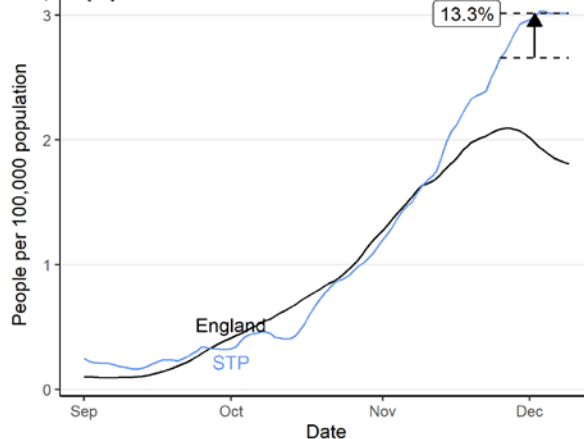
Total beds occupied by COVID-19 patients per 100,000 population



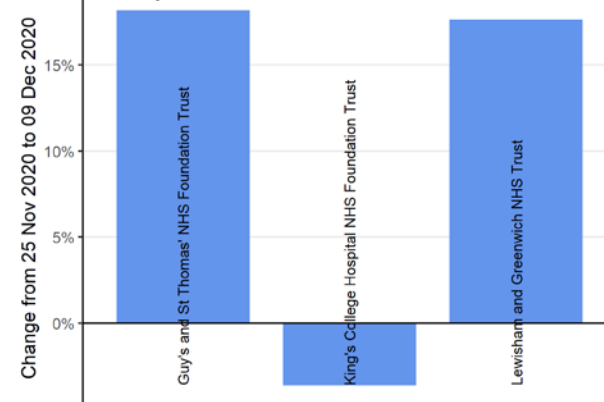
Total beds occupied by people with COVID-19 for specific trusts



Mechanical ventilation beds occupied by COVID-19 patients per 100,000 population



Change in last 14 days in total beds occupied by people with COVID-19 for specific trusts



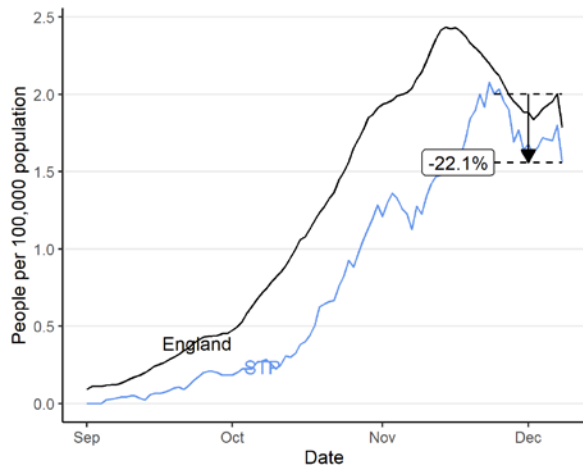
Source: Data from NHS COVID-19 Hospital Activity publications, <https://www.england.nhs.uk/statistics/statistical-work-areas/covid-19-hospital-activity>, from 01 September 2020 to 09 December 2020. Produced by Joint Biosecurity Centre.

Hospital Metrics: South West London Health and Care Partnership

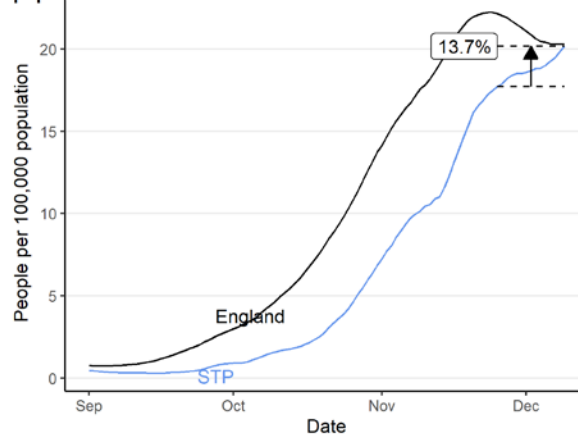
Hospital metrics: South West London Health and Care Partnership

Time series plots use 7 day rolling averages across data. Vertical arrows show the percentage change for that STP in the last 14 days, with the percentage given.

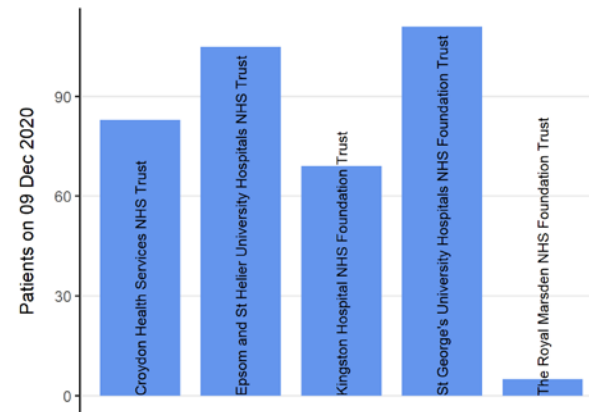
COVID-19 hospital admissions per 100,000 population



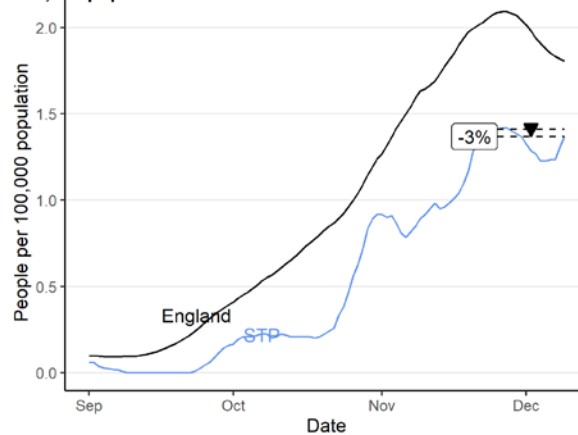
Total beds occupied by COVID-19 patients per 100,000 population



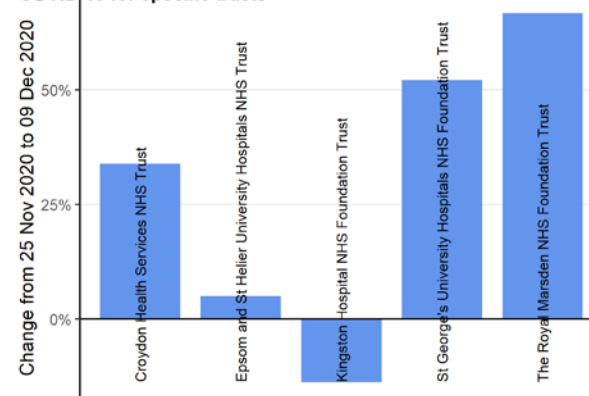
Total beds occupied by people with COVID-19 for specific trusts



Mechanical ventilation beds occupied by COVID-19 patients per 100,000 population



Change in last 14 days in total beds occupied by people with COVID-19 for specific trusts



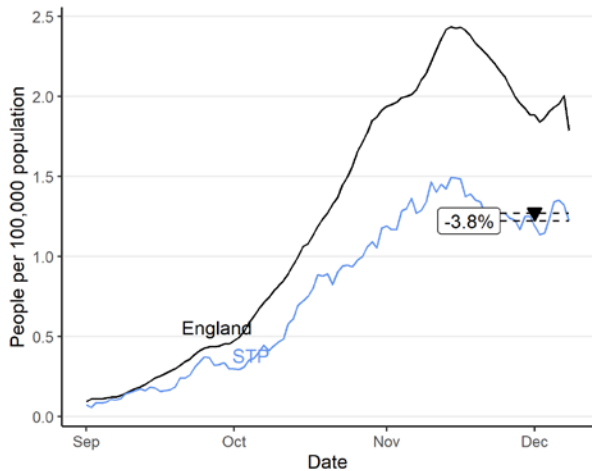
Source: Data from NHS COVID-19 Hospital Activity publications, <https://www.england.nhs.uk/statistics/statistical-work-areas/covid-19-hospital-activity/>, from 01 September 2020 to 09 December 2020. Produced by Joint Biosecurity Centre.

Hospital Metrics: North West London Health and Care Partnership

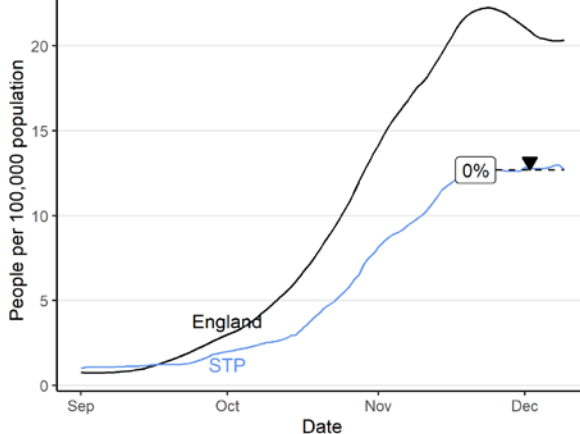
Hospital metrics: North West London Health and Care Partnership

Time series plots use 7 day rolling averages across data. Vertical arrows show the percentage change for that STP in the last 14 days, with the percentage given.

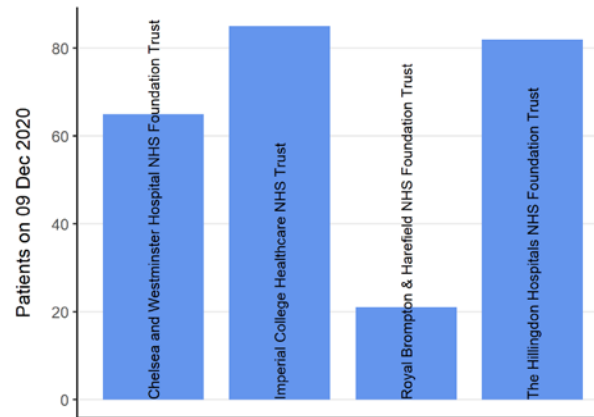
COVID-19 hospital admissions per 100,000 population



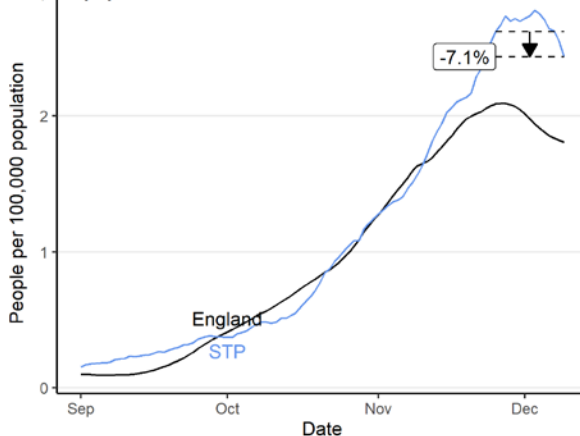
Total beds occupied by COVID-19 patients per 100,000 population



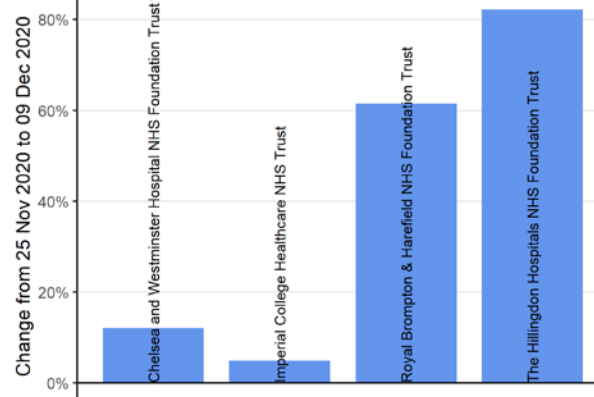
Total beds occupied by people with COVID-19 for specific trusts



Mechanical ventilation beds occupied by COVID-19 patients per 100,000 population



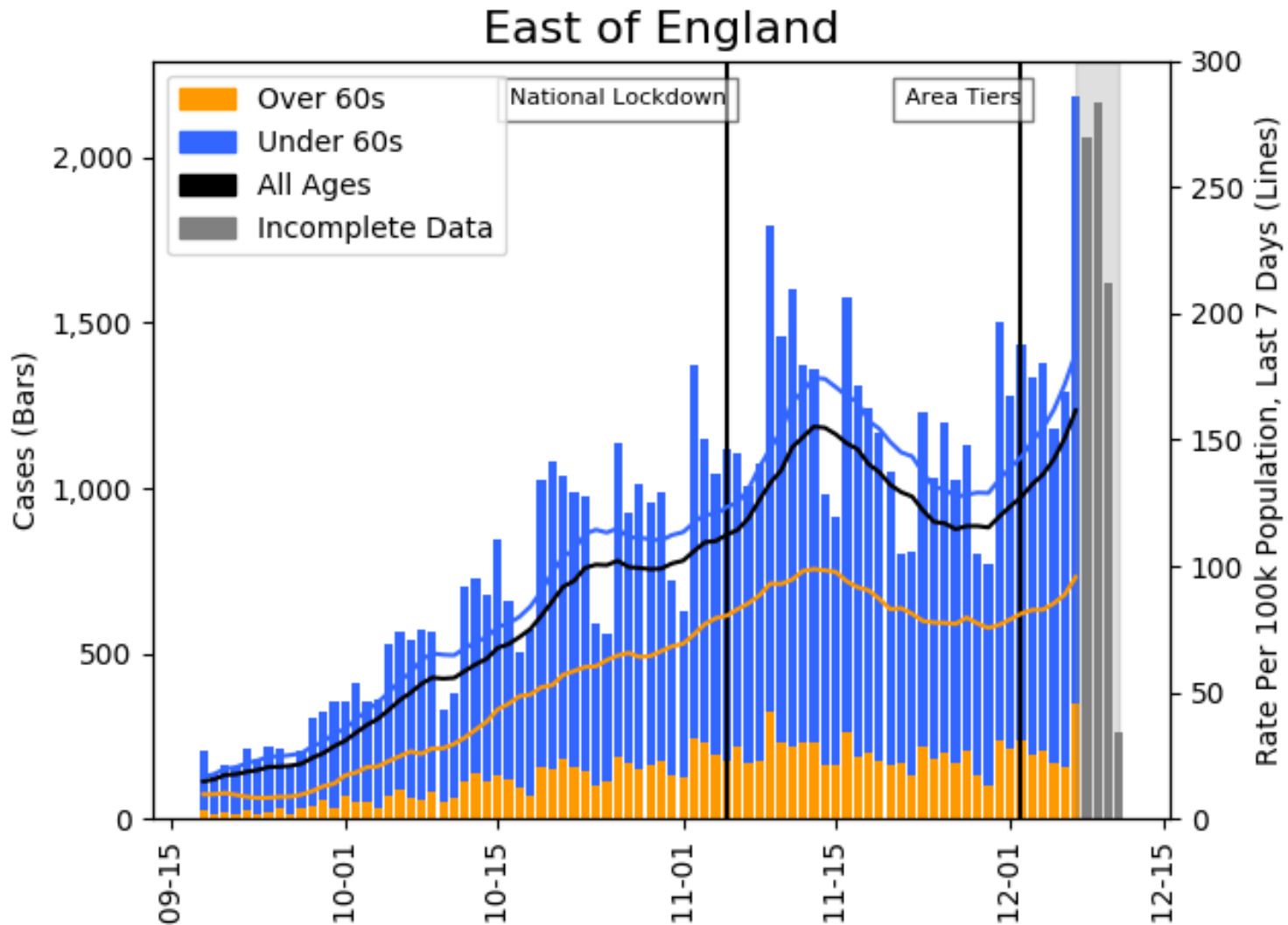
Change in last 14 days in total beds occupied by people with COVID-19 for specific trusts



Source: Data from NHS COVID-19 Hospital Activity publications, <https://www.england.nhs.uk/statistics/statistical-work-areas/covid-19-hospital-activity>, from 01 September 2020 to 09 December 2020. Produced by Joint Biosecurity Centre.

East of England

East of England : Summary case count and case rate charts to 11 Dec 2020



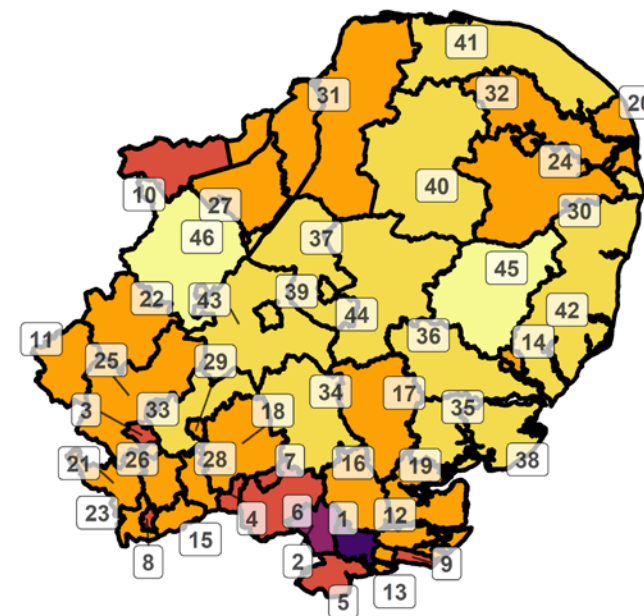
Stacked bars show the total number of cases by specimen date (left-hand axis). Solid lines show 7-day-average rolling case rates per 100k population (right-hand axis). The most recent four days of data are incomplete and shaded in grey.

Case rate map by local authority: 30 Nov to 06 Dec 2020

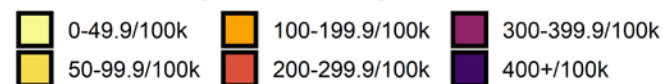
| Rank | Local Authority | Case Rate (per 100,000) | Number of cases (1 week) |
|------|--------------------|-------------------------|--------------------------|
| 1 | Basildon | 477.6 | 894 |
| 2 | Brentwood | 301.2 | 232 |
| 3 | Luton | 299.5 | 638 |
| 4 | Broxbourne | 293.0 | 285 |
| 5 | Thurrock | 283.9 | 495 |
| 6 | Epping Forest | 278.7 | 367 |
| 7 | Harlow | 234.3 | 204 |
| 8 | Watford | 216.4 | 209 |
| 9 | Southend-on-Sea | 214.6 | 393 |
| 10 | Peterborough | 210.1 | 425 |
| 11 | Milton Keynes | 199.3 | 537 |
| 12 | Rochford | 193.4 | 169 |
| 13 | Castle Point | 188.1 | 170 |
| 14 | Ipswich | 168.0 | 230 |
| 15 | Hertsmere | 159.2 | 167 |
| 16 | Chelmsford | 158.1 | 282 |
| 17 | Braintree | 157.9 | 241 |
| 18 | East Hertfordshire | 152.9 | 229 |
| 19 | Maldon | 141.7 | 92 |
| 20 | Great Yarmouth | 140.9 | 140 |
| 21 | Dacorum | 136.3 | 211 |
| 22 | Bedford | 132.7 | 230 |
| 23 | Three Rivers | 131.8 | 123 |

| Rank | Local Authority | Case Rate (per 100,000) | Number of cases (1 week) |
|------|------------------------------|-------------------------|--------------------------|
| 24 | Norwich | 126.6 | 178 |
| 25 | Central Bedfordshire | 123.7 | 357 |
| 26 | St Albans | 122.6 | 182 |
| 27 | Fenland | 121.7 | 124 |
| 28 | Welwyn Hatfield | 117.0 | 144 |
| 29 | Stevenage | 111.6 | 98 |
| 30 | South Norfolk | 107.9 | 152 |
| 31 | King's Lynn and West Norfolk | 106.4 | 161 |
| 32 | Broadland | 104.8 | 137 |
| 33 | North Hertfordshire | 98.8 | 132 |
| 34 | Uttlesford | 93.1 | 85 |
| 35 | Colchester | 90.9 | 177 |
| 36 | Babergh | 83.7 | 77 |
| 37 | East Cambridgeshire | 79.0 | 71 |
| 38 | Tendring | 77.1 | 113 |
| 39 | Cambridge | 76.1 | 95 |
| 40 | Breckland | 75.0 | 105 |
| 41 | North Norfolk | 72.5 | 76 |
| 42 | East Suffolk | 66.5 | 166 |
| 43 | South Cambridgeshire | 63.5 | 101 |
| 44 | West Suffolk | 58.1 | 104 |
| 45 | Mid Suffolk | 47.2 | 49 |
| 46 | Huntingdonshire | 46.1 | 82 |

East of England
COVID-19 cases: 30 Nov to 06 Dec 2020
Weekly case rates per 100,000 population by local authority



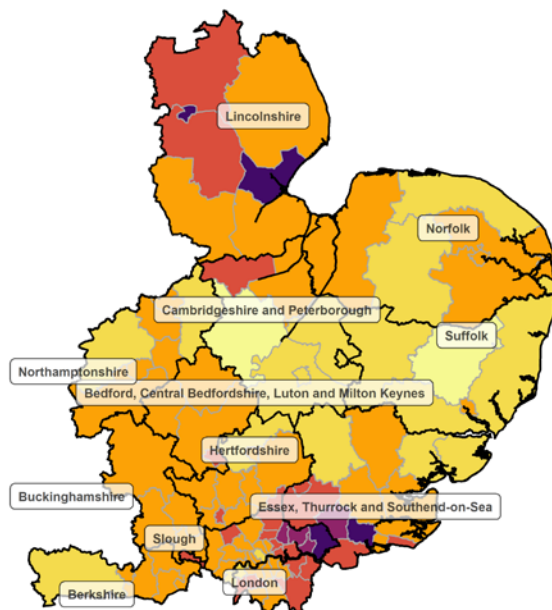
Covid-19 rate by local authority



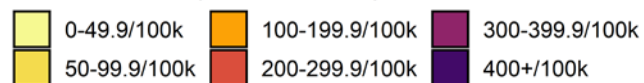
Data from SGSS; Pillar 1 and 2 testing. Figure by Outbreak Surveillance Team, Public Health England.

Contains National Statistics data including 2019 population estimates Â© Crown copyright and database right 2020

East of England and surrounding areas COVID-19 cases: 30 Nov to 06 Dec 2020 Weekly case rates per 100,000 population by local authority



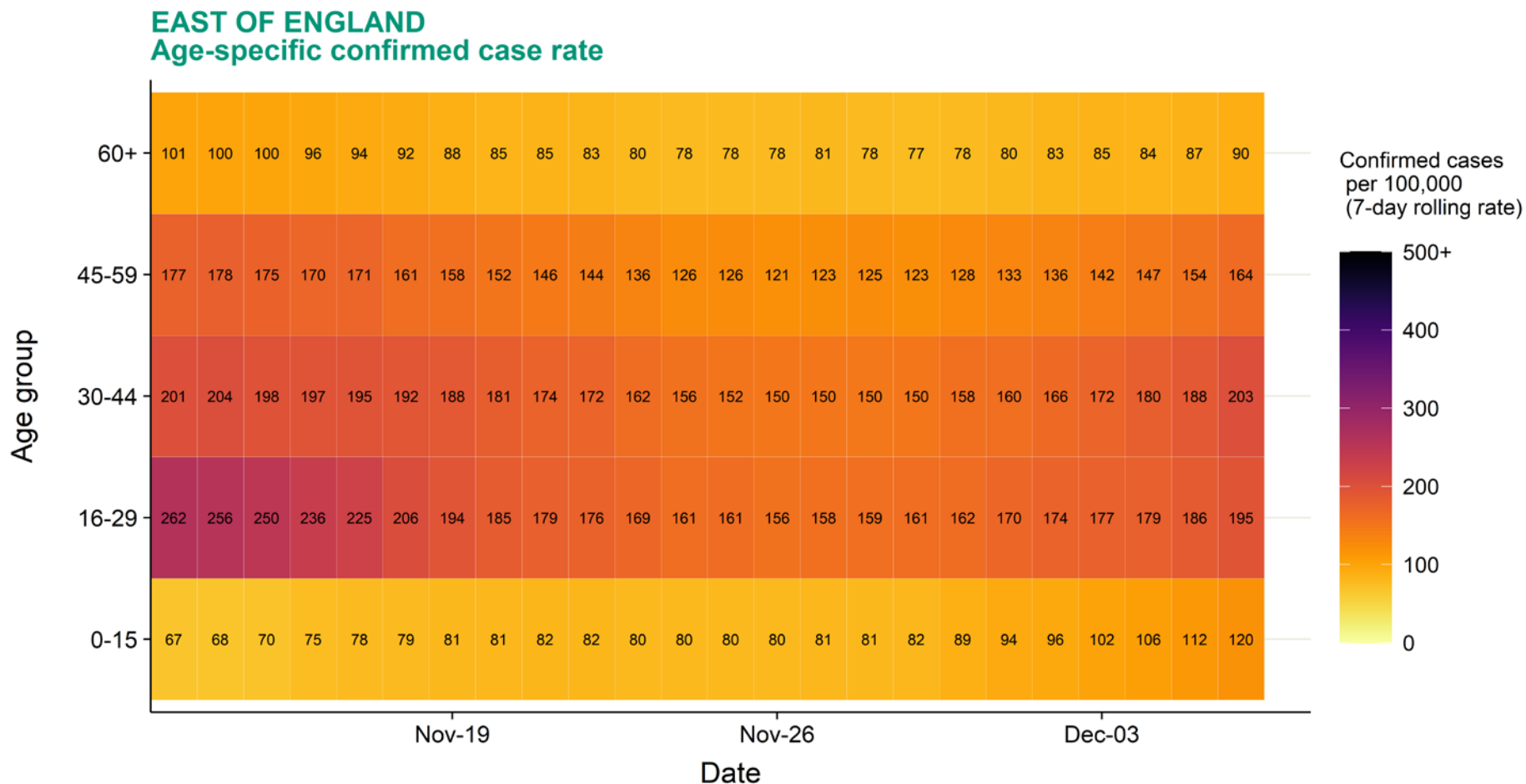
Covid-19 rate by local authority



Data from SGSS; Pillar 1 and 2 testing. Figure by Outbreak Surveillance Team, Public Health England.

Contains National Statistics data including 2019 population estimates Â© Crown copyright and database right 2020

Case rate heatmap for East of England : 13 Nov to 06 Dec 2020



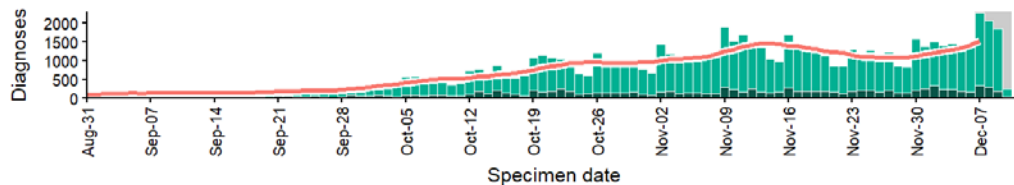
Source: Case data from SGSS. Produced by Outbreak Surveillance Team, PHE

Contains National Statistics data © Crown copyright and database right 2020

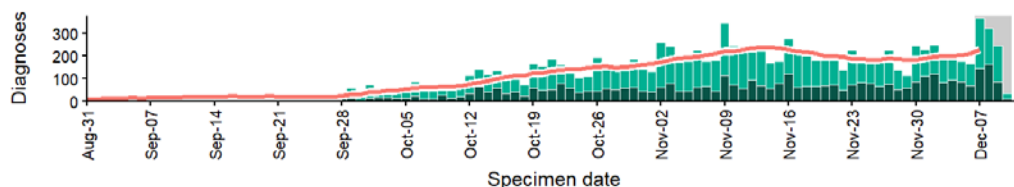
Regional case numbers, testing numbers and positivity, East of England: 01 Sep to 10 Dec 2020

EAST OF ENGLAND Cases and persons tested up to December 10 2020

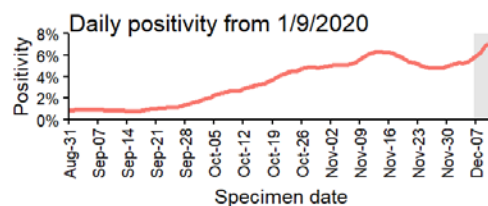
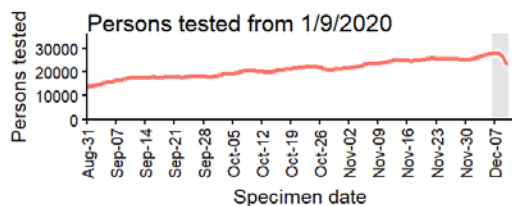
Regional daily cases from 1/9/2020: ALL AGES



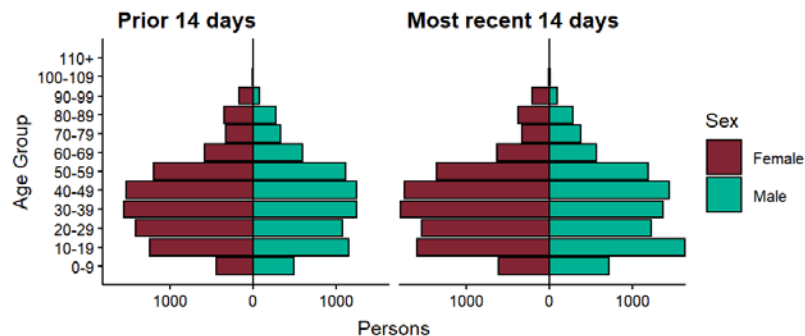
Regional daily cases from 1/9/2020: 60+ YEARS ONLY **NOTE: different y-axis scale**



4 days with incomplete data Pillar 1 Pillar 2 Total 7 day moving average (P1 + P2)



Age-sex pyramid for confirmed cases in past 14 days (November 27 2020 to December 10 2020) and prior 14 days (November 13 2020 to November 26 2020) 108 persons excluded due to missing gender or age.



Data from SGSS. Produced by Outbreak Surveillance Team, PHE

Essex, Thurrock and Southend-on-Sea

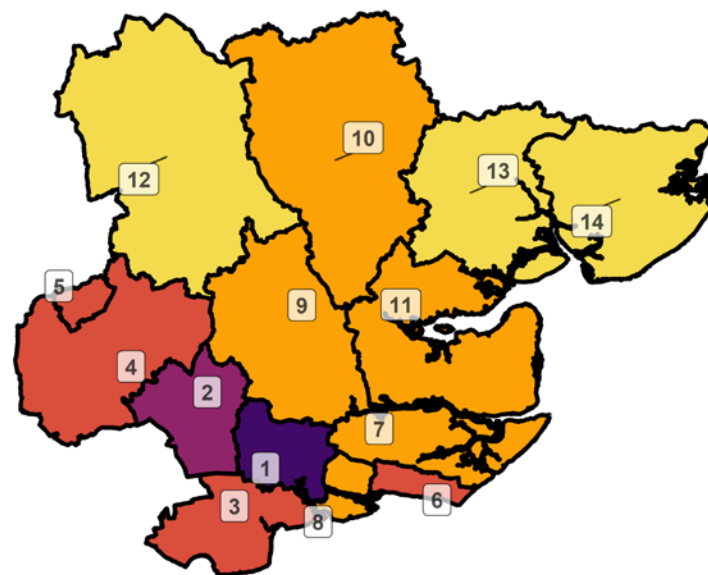
Case rate and positivity by local authority: 2 Dec to 8 Dec 2020

| Area | UTLA | LTLA Name | Population ('000s) | Confirmed cases (last 7-days) | Individuals tested per day per 100,000 population (7 day moving average) | | Indicator 1: Case rate per 100,000 population (weekly) | | Indicator 2: Case rate per 100,000 population aged 60 years and over (weekly) | | Indicator 3: Percentage change in Case rate per 100,000 from previous week | Indicator 4: Percentage individuals test positive (weekly) | | Current Local Covid Alert Level |
|-------------------------------------|-----------------|-----------------|--------------------|-------------------------------|--|-------|--|-------|---|-------|--|--|-------|---------------------------------|
| | | | | | | | | | | | | | | |
| Essex, Thurrock and Southend-on-Sea | Essex | Basildon | 187 | 1,053 | 650 | ↑ 204 | 563 | ↑ 215 | 251 | ↑ 40 | 62% | 13% | ↑ 1.2 | High |
| Essex, Thurrock and Southend-on-Sea | Essex | Brentwood | 77 | 284 | 535 | ↑ 45 | 369 | ↑ 158 | 255 | ↑ 70 | 75% | 11% | ↑ 3.4 | High |
| Essex, Thurrock and Southend-on-Sea | Thurrock | Thurrock | 174 | 609 | 431 | ↑ 63 | 349 | ↑ 141 | 181 | ↑ 38 | 67% | 12% | ↑ 3.8 | High |
| Essex, Thurrock and Southend-on-Sea | Essex | Castle Point | 90 | 246 | 390 | ↑ 9 | 272 | ↑ 96 | 290 | ↑ 136 | 55% | 11% | ↑ 3.6 | High |
| Essex, Thurrock and Southend-on-Sea | Essex | Epping Forest | 132 | 444 | 482 | ↑ 79 | 337 | ↑ 141 | 167 | ↑ 33 | 71% | 11% | ↑ 2.7 | High |
| Essex, Thurrock and Southend-on-Sea | Essex | Harlow | 87 | 219 | 442 | ↓ -3 | 252 | ↑ 28 | 161 | ↑ 0 | 12% | 9% | ↑ 1.1 | High |
| Essex, Thurrock and Southend-on-Sea | Southend-on-Sea | Southend-on-Sea | 183 | 525 | 533 | ↑ 89 | 287 | ↑ 135 | 211 | ↑ 125 | 89% | 8% | ↑ 2.9 | High |
| Essex, Thurrock and Southend-on-Sea | Essex | Rochford | 87 | 201 | 395 | ↑ 47 | 230 | ↑ 80 | 109 | ↑ 27 | 54% | 9% | ↑ 2.1 | High |
| Essex, Thurrock and Southend-on-Sea | Essex | Chelmsford | 178 | 407 | 407 | ↑ 76 | 228 | ↑ 116 | 86 | ↑ 52 | 104% | 8% | ↑ 3.1 | High |
| Essex, Thurrock and Southend-on-Sea | Essex | Braintree | 153 | 334 | 438 | ↑ 57 | 219 | ↑ 116 | 90 | ↑ 25 | 113% | 7% | ↑ 3.2 | High |
| Essex, Thurrock and Southend-on-Sea | Essex | Uttlesford | 91 | 108 | 410 | ↑ 22 | 118 | ↑ 35 | 38 | ↑ 17 | 42% | 4% | ↑ 1.0 | High |
| Essex, Thurrock and Southend-on-Sea | Essex | Maldon | 65 | 120 | 375 | ↑ 54 | 185 | ↑ 103 | 137 | ↑ 80 | 126% | 7% | ↑ 3.5 | High |
| Essex, Thurrock and Southend-on-Sea | Essex | Colchester | 195 | 190 | 438 | ↑ 30 | 98 | ↑ 11 | 40 | ↓ -35 | 12% | 4% | ↑ 0.1 | High |
| Essex, Thurrock and Southend-on-Sea | Essex | Tendring | 147 | 136 | 475 | ↑ 35 | 93 | ↑ 21 | 69 | ↑ 32 | 28% | 3% | ↑ 0.1 | High |

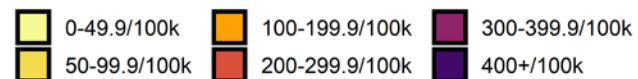
Case rate map by local authority: 30 Nov to 06 Dec 2020

| Rank | Local Authority | Case Rate (per 100,000) | Number of cases (1 week) |
|------|-----------------|-------------------------|--------------------------|
| 1 | Basildon | 477.6 | 894 |
| 2 | Brentwood | 301.2 | 232 |
| 3 | Thurrock | 283.9 | 495 |
| 4 | Epping Forest | 278.7 | 367 |
| 5 | Harlow | 234.3 | 204 |
| 6 | Southend-on-Sea | 214.6 | 393 |
| 7 | Rochford | 193.4 | 169 |
| 8 | Castle Point | 188.1 | 170 |
| 9 | Chelmsford | 158.1 | 282 |
| 10 | Braintree | 157.9 | 241 |
| 11 | Maldon | 141.7 | 92 |
| 12 | Uttlesford | 93.1 | 85 |
| 13 | Colchester | 90.9 | 177 |
| 14 | Tendring | 77.1 | 113 |

Essex, Thurrock and Southend-on-Sea
COVID-19 cases: 30 Nov to 06 Dec 2020
 Weekly case rates per 100,000 population by local authority



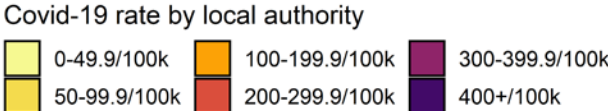
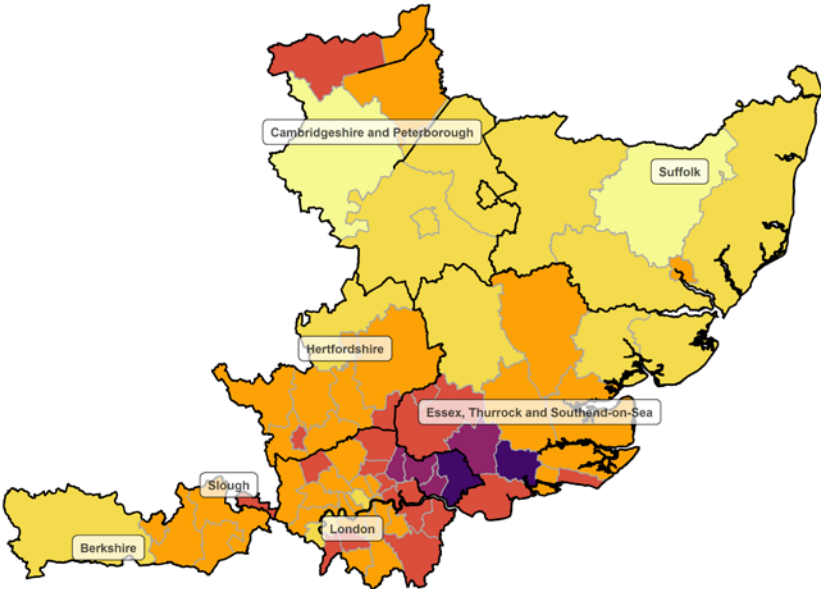
Covid-19 rate by local authority



Data from SGSS; Pillar 1 and 2 testing. Figure by Outbreak Surveillance Team, Public Health England.

Contains National Statistics data including 2019 population estimates © Crown copyright and database right 2020

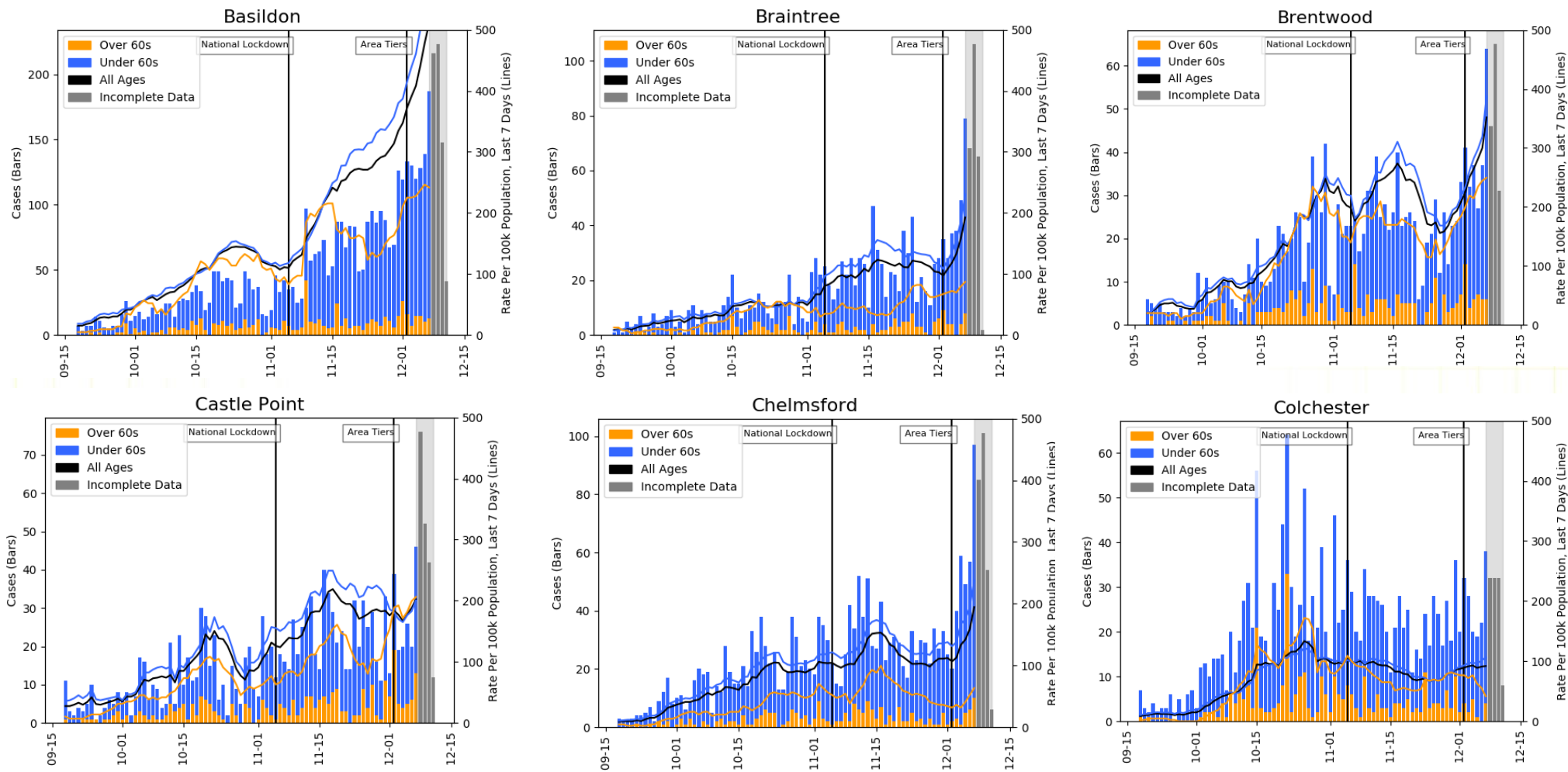
**Essex, Thurrock and Southend-on-Sea and surrounding areas
COVID-19 cases: 30 Nov to 06 Dec 2020**
Weekly case rates per 100,000 population by local authority



Data from SGSS; Pillar 1 and 2 testing. Figure by Outbreak Surveillance Team, Public Health England.

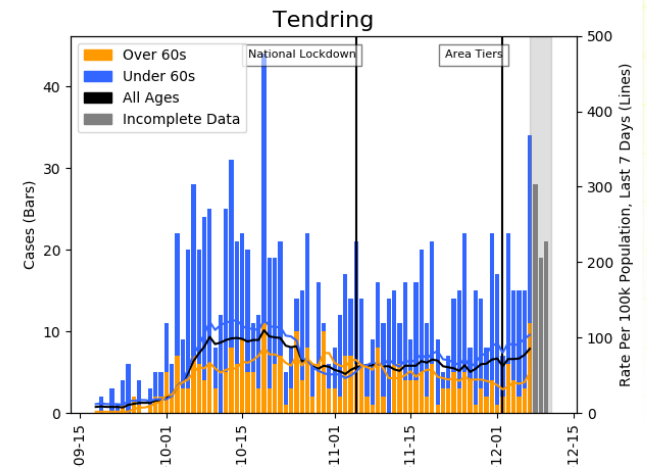
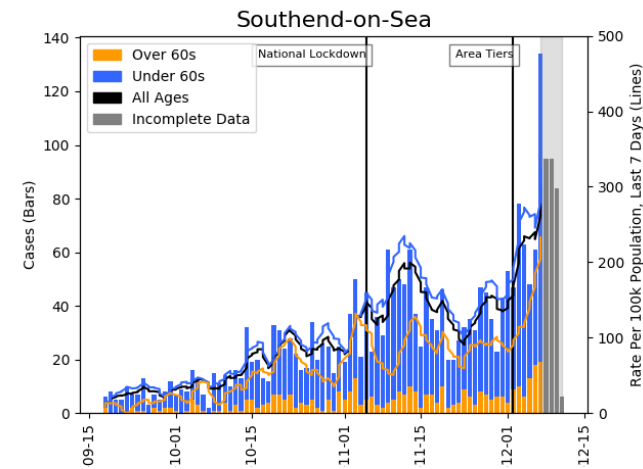
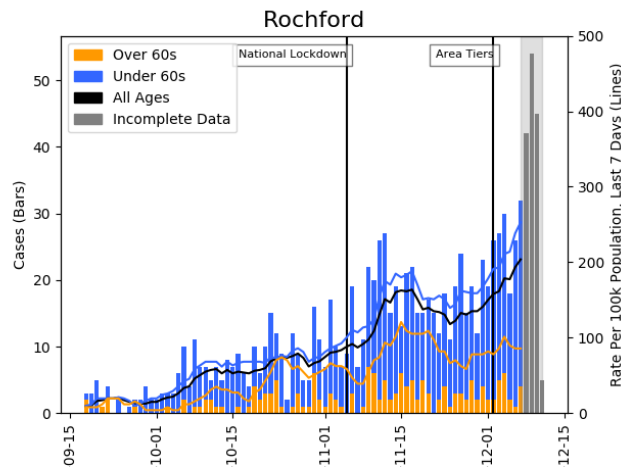
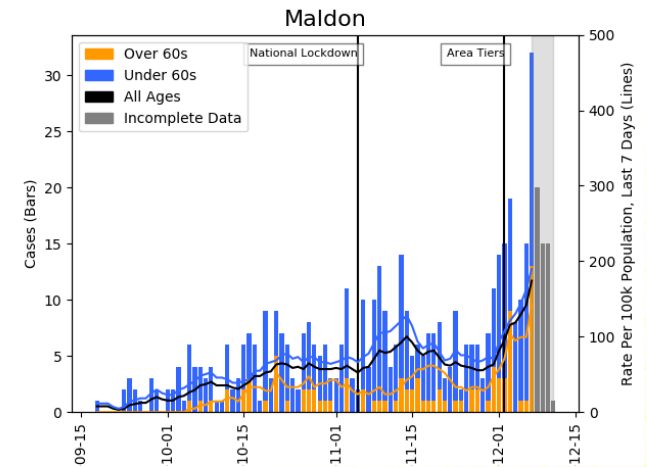
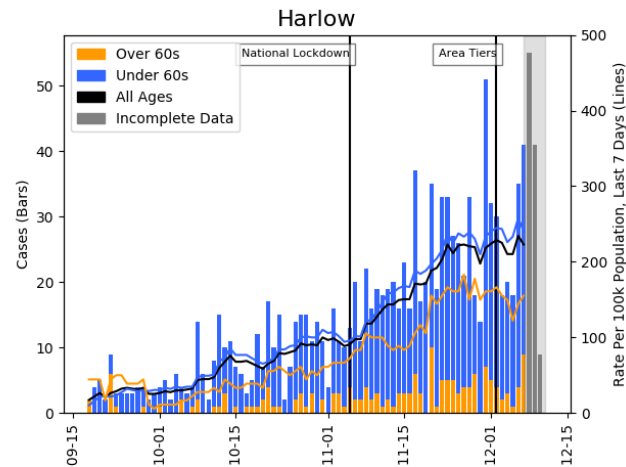
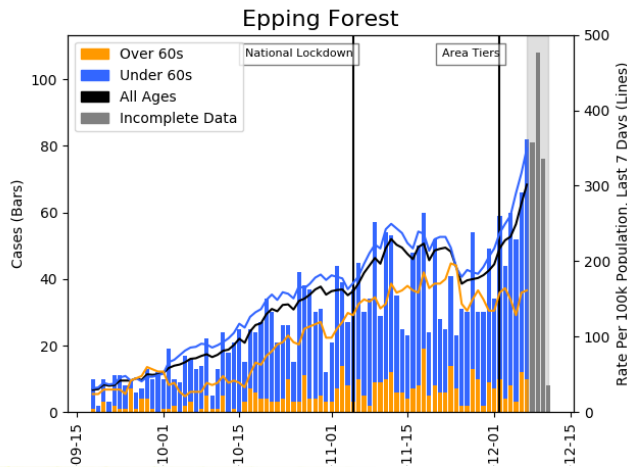
Contains National Statistics data including 2019 population estimates Â© Crown copyright and database right 2020

Essex, Thurrock and Southend-on-Sea : Summary case count and case rate charts to 11 Dec 2020



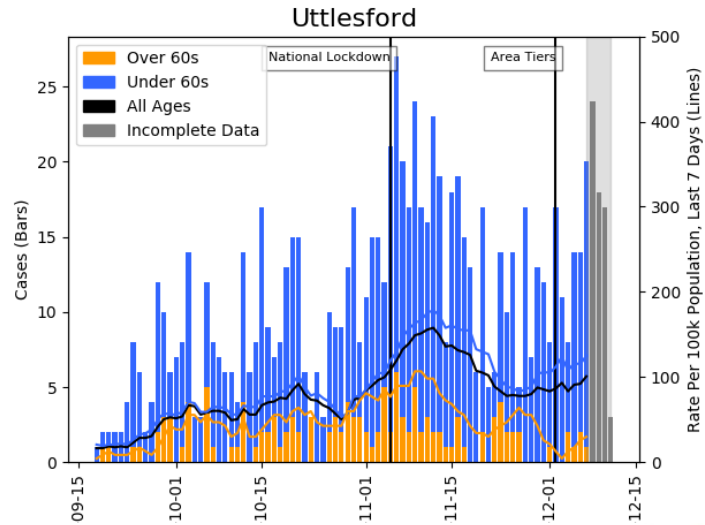
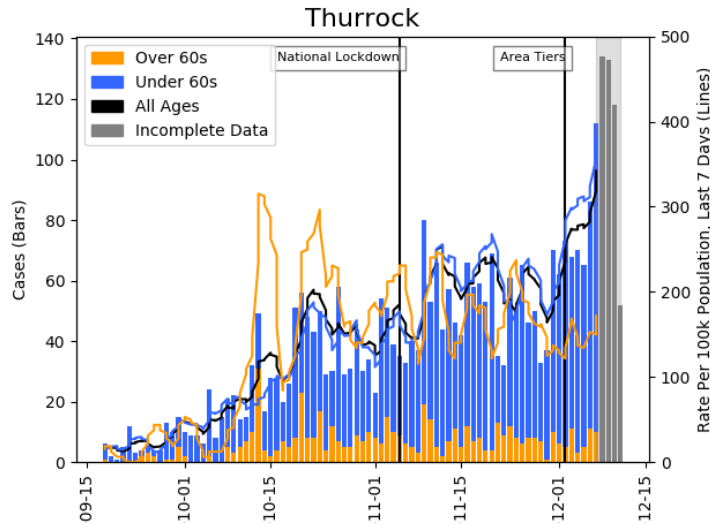
Stacked bars show the total number of cases by specimen date (left-hand axis). Solid lines show 7-day-average rolling case rates per 100k population (right-hand axis). The most recent four days of data are incomplete and shaded in grey.

Essex, Thurrock and Southend-on-Sea :Summary case count and case rate charts to 11 Dec 2020



Stacked bars show the total number of cases by specimen date (left-hand axis). Solid lines show 7-day-average rolling case rates per 100k population (right-hand axis). The most recent four days of data are incomplete and shaded in grey.

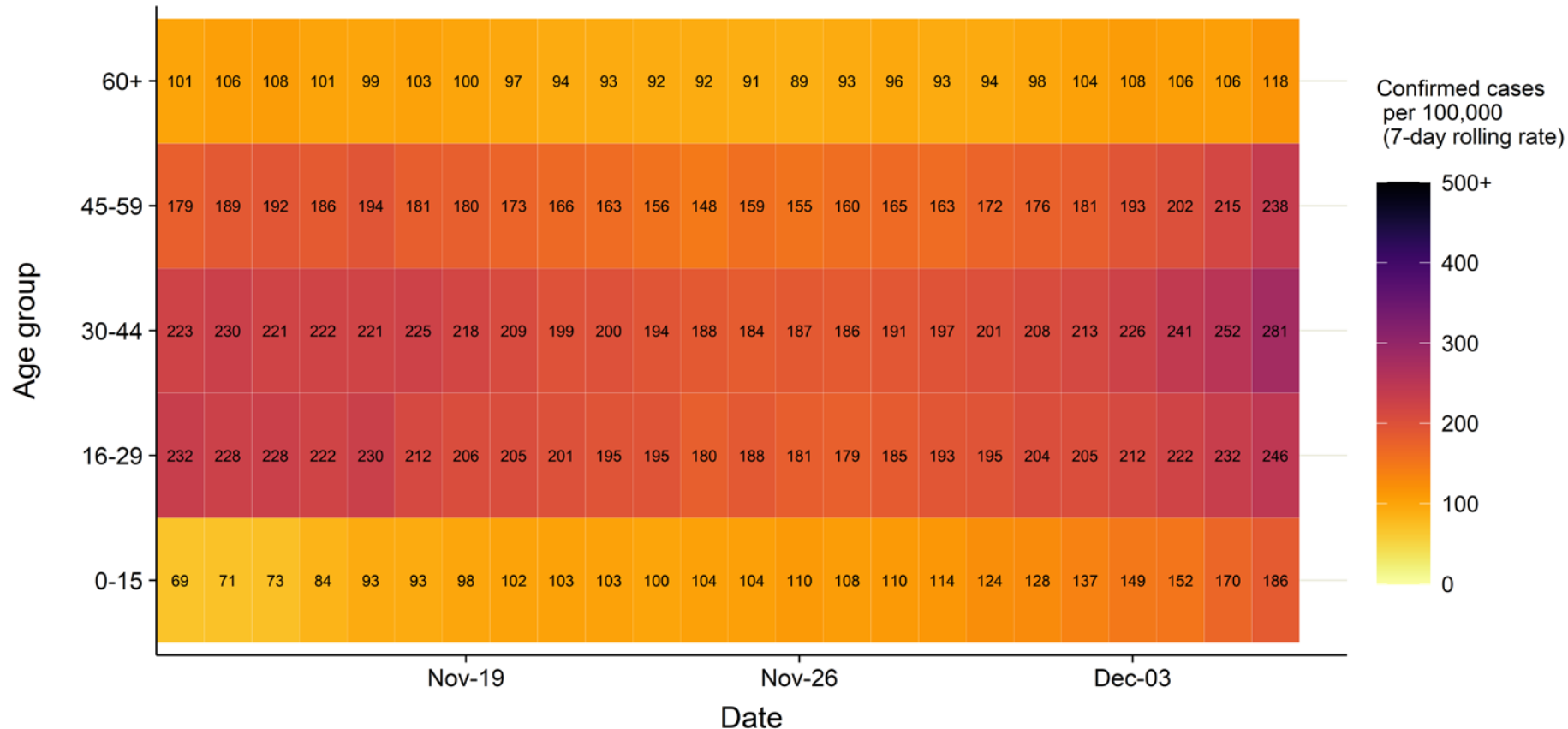
Essex, Thurrock and Southend-on-Sea : Summary case count and case rate charts to 11 Dec 2020



Stacked bars show the total number of cases by specimen date (left-hand axis). Solid lines show 7-day-average rolling case rates per 100k population (right-hand axis). The most recent four days of data are incomplete and shaded in grey.

Case rate heatmap for Essex, Thurrock and Southend-on-Sea : 13 Nov to 06 Dec 2020

ESSEX, THURROCK AND SOUTHEND-ON-SEA Age-specific confirmed case rate



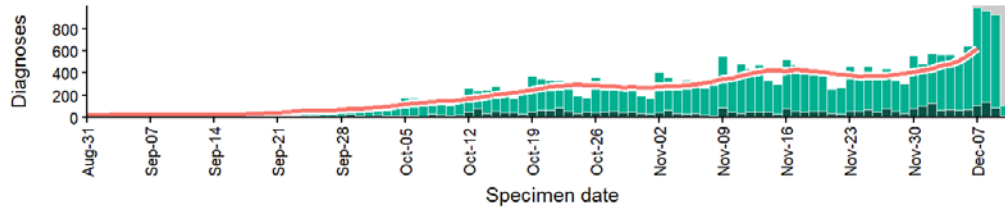
Source: Case data from SGSS. Produced by Outbreak Surveillance Team, PHE

Contains National Statistics data Â© Crown copyright and database right 2020

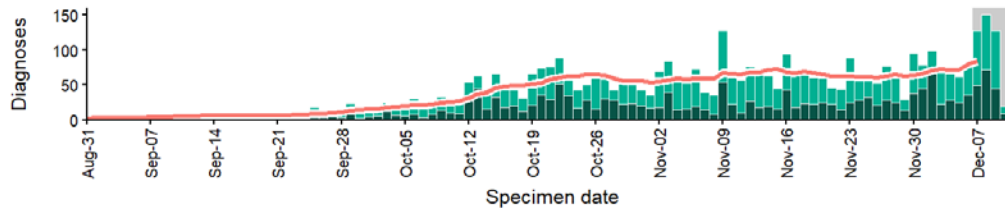
Regional case numbers, testing numbers and positivity, Essex, Thurrock and Southend-on-Sea : 01 Sep to 10 Dec 2020

ESSEX, THURROCK AND SOUTHEND-ON-SEA Cases and persons tested up to December 10 2020

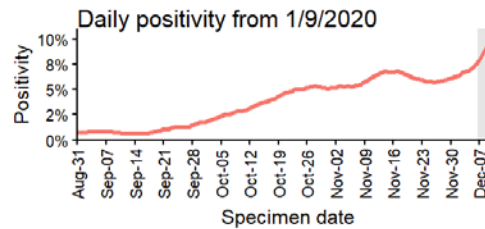
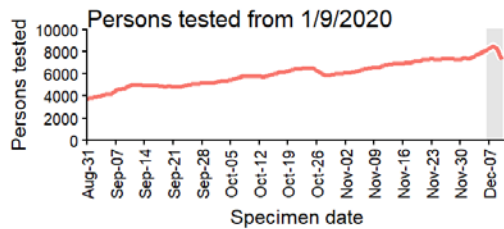
Regional daily cases from 1/9/2020: ALL AGES



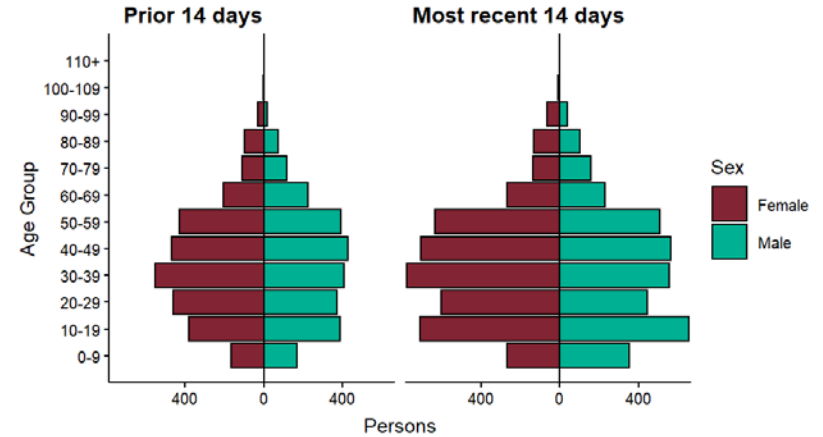
Regional daily cases from 1/9/2020: 60+ YEARS ONLY **NOTE: different y-axis scale**



4 days with incomplete data Pillar 1 Pillar 2 Total 7 day moving average (P1 + P2)



Age-sex pyramid for confirmed cases in past 14 days (November 27 2020 to December 10 2020) and prior 14 days (November 13 2020 to November 26 2020) 39 persons excluded due to missing gender or age.



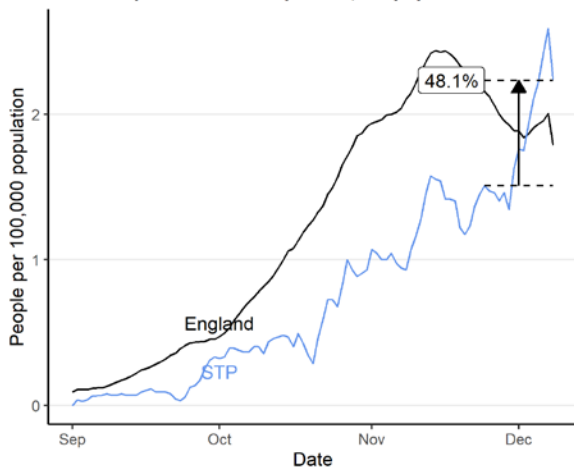
Data from SGSS. Produced by Outbreak Surveillance Team, PHE

Hospital Metrics: Mid and South Essex

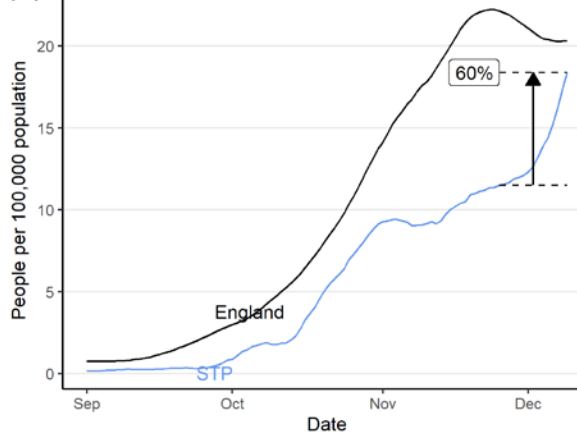
Hospital metrics: Mid and South Essex

Time series plots use 7 day rolling averages across data. Vertical arrows show the percentage change for that STP in the last 14 days, with the percentage given.

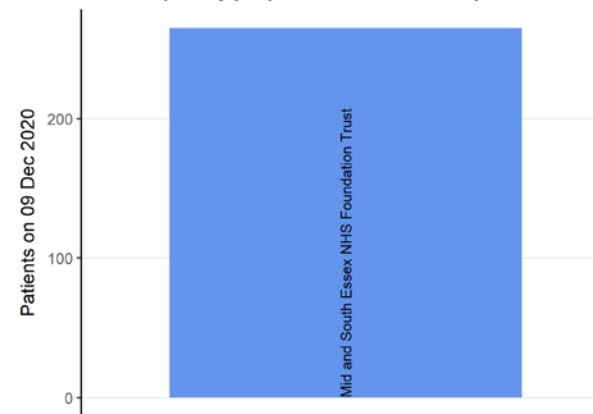
COVID-19 hospital admissions per 100,000 population



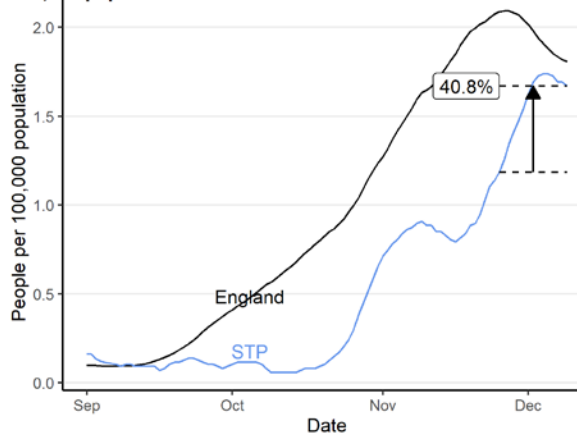
Total beds occupied by COVID-19 patients per 100,000 population



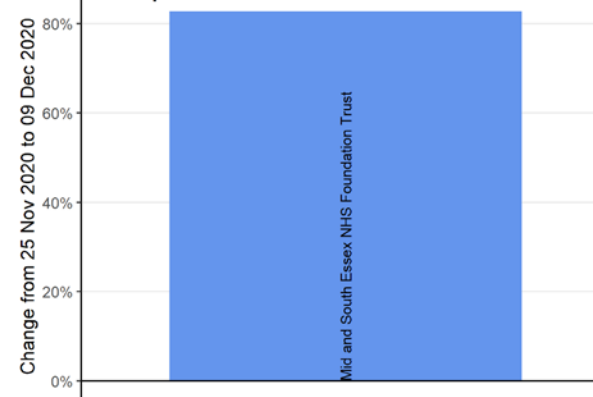
Total beds occupied by people with COVID-19 for specific trusts



Mechanical ventilation beds occupied by COVID-19 patients per 100,000 population



Change in last 14 days in total beds occupied by people with COVID-19 for specific trusts



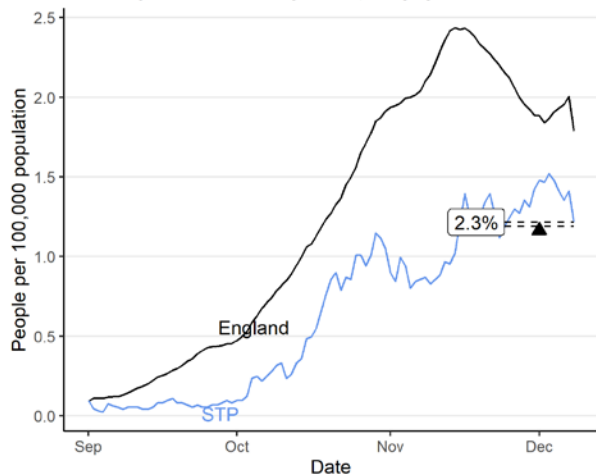
Source: Data from NHS COVID-19 Hospital Activity publications, <https://www.england.nhs.uk/statistics/statistical-work-areas/covid-19-hospital-activity>, from 01 September 2020 to 09 December 2020. Produced by Joint Biosecurity Centre.

Hospital Metrics: Suffolk and North East Essex

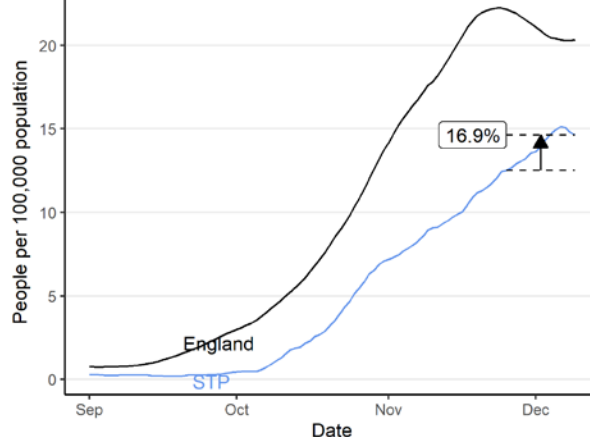
Hospital metrics: Suffolk and North East Essex

Time series plots use 7 day rolling averages across data. Vertical arrows show the percentage change for that STP in the last 14 days, with the percentage given.

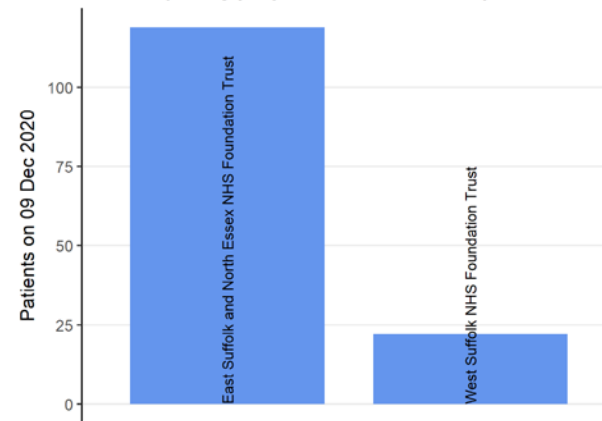
COVID-19 hospital admissions per 100,000 population



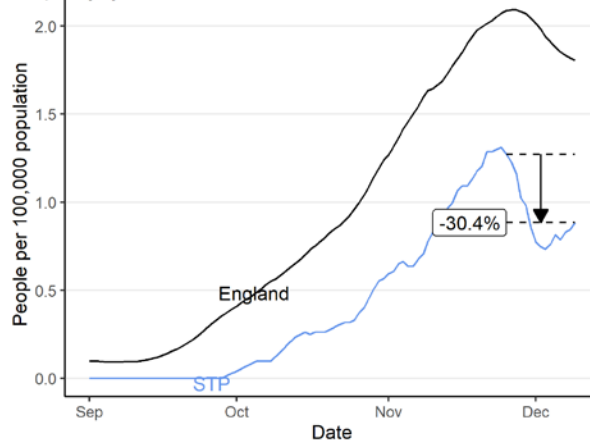
Total beds occupied by COVID-19 patients per 100,000 population



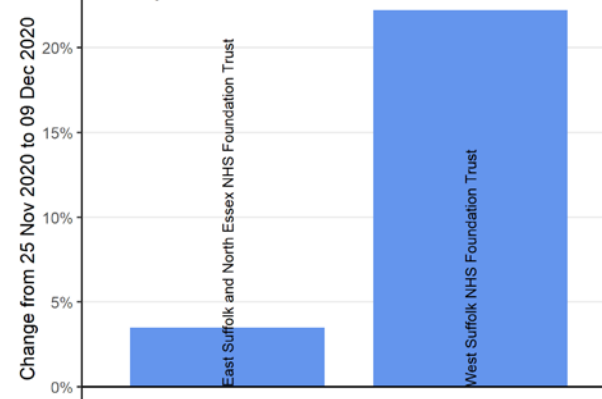
Total beds occupied by people with COVID-19 for specific trusts



Mechanical ventilation beds occupied by COVID-19 patients per 100,000 population



Change in last 14 days in total beds occupied by people with COVID-19 for specific trusts



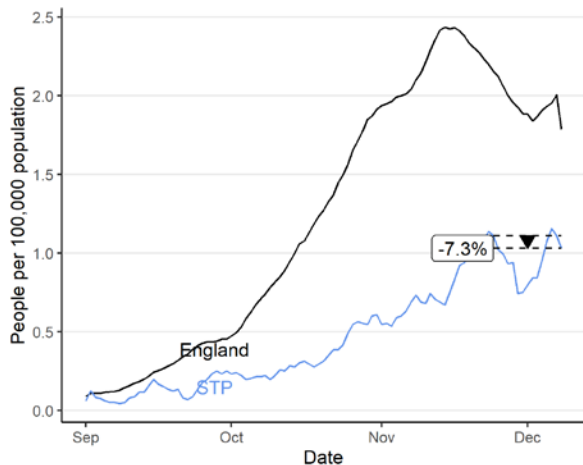
Source: Data from NHS COVID-19 Hospital Activity publications, <https://www.england.nhs.uk/statistics/statistical-work-areas/covid-19-hospital-activity>, from 01 September 2020 to 09 December 2020. Produced by Joint Biosecurity Centre.

Hospital Metrics: Hertfordshire and West Essex

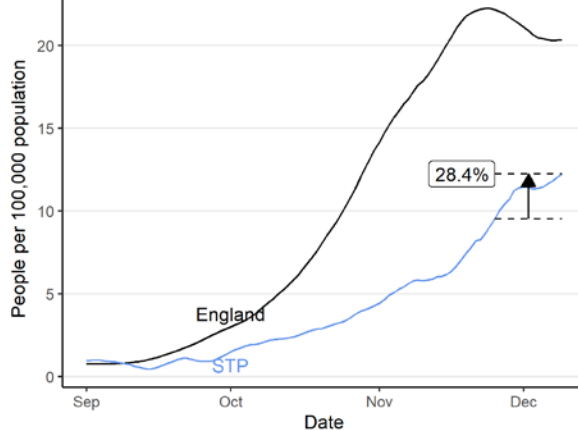
Hospital metrics: Hertfordshire and West Essex

Time series plots use 7 day rolling averages across data. Vertical arrows show the percentage change for that STP in the last 14 days, with the percentage given.

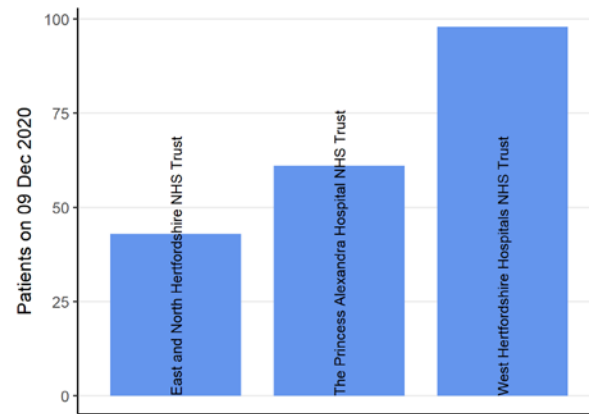
COVID-19 hospital admissions per 100,000 population



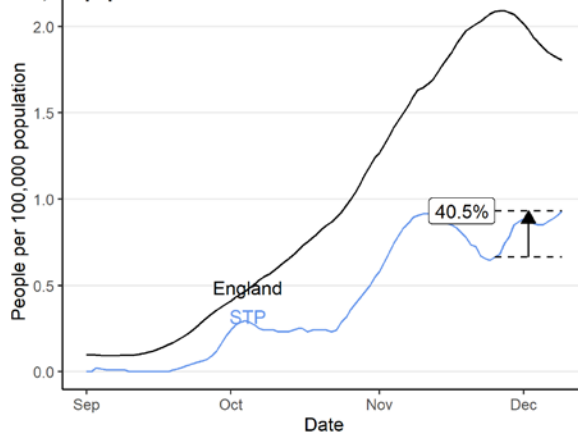
Total beds occupied by COVID-19 patients per 100,000 population



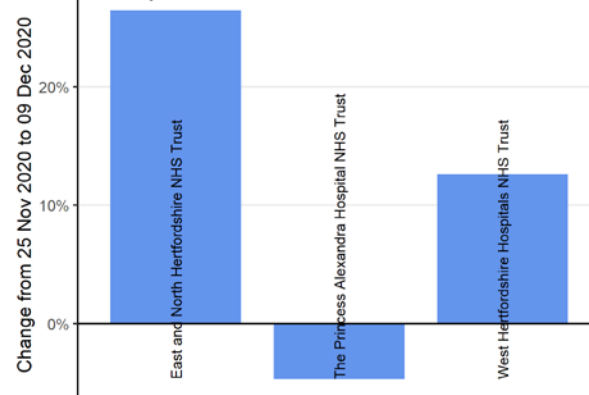
Total beds occupied by people with COVID-19 for specific trusts



Mechanical ventilation beds occupied by COVID-19 patients per 100,000 population



Change in last 14 days in total beds occupied by people with COVID-19 for specific trusts



Source: Data from NHS COVID-19 Hospital Activity publications, <https://www.england.nhs.uk/statistics/statistical-work-areas/covid-19-hospital-activity>, from 01 September 2020 to 09 December 2020. Produced by Joint Biosecurity Centre.

Hertfordshire

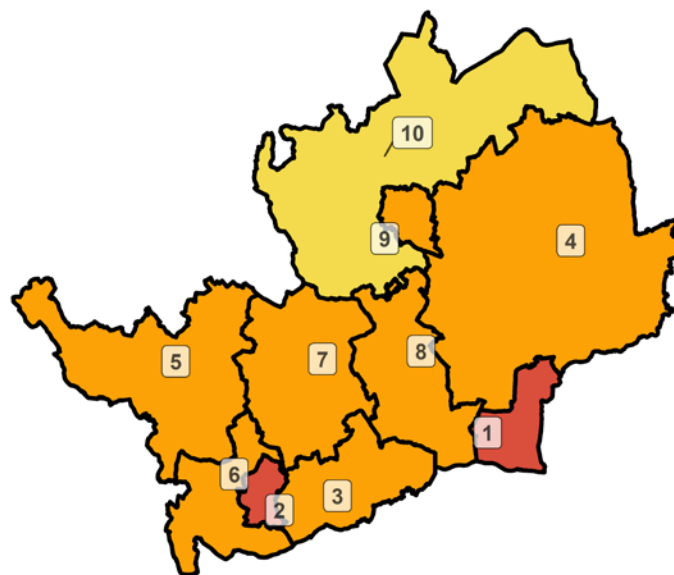
Case rate and positivity by local authority: 2 Dec to 8 Dec 2020

| UTLA | LTLA Name | Population ('000s) | Confirmed cases (last 7-days) | Individuals tested per day per 100,000 population (7 day moving average) | | Indicator 1: Case rate per 100,000 population (weekly) | | Indicator 2: Case rate per 100,000 population aged 60 years and over (weekly) | | Indicator 3: Percentage change in Case rate per 100,000 from previous week | Indicator 4: Percentage individuals test positive (weekly) | | Current Local Covid Alert Level |
|---------------|---------------------|--------------------|-------------------------------|--|------|--|-------|---|-------|--|--|--------|---------------------------------|
| | | | | | | | | | | | | | |
| Hertfordshire | Broxbourne | 97 | 348 | 430 | ↑ 65 | 358 | ↑ 159 | 155 | ↑ 102 | 80% | 13% | ↑ 4.3 | High |
| Hertfordshire | Watford | 97 | 238 | 476 | ↑ 48 | 246 | ↑ 61 | 151 | ↑ 6 | 33% | 8% | ↑ 1.3 | High |
| Hertfordshire | East Hertfordshire | 150 | 224 | 397 | ↑ 34 | 150 | ↓ -1 | 67 | ↑ 8 | -1% | 6% | ↓ -0.7 | High |
| Hertfordshire | Hertsmere | 105 | 219 | 547 | ↑ 86 | 209 | ↑ 65 | 68 | ↑ 36 | 45% | 6% | ↑ 0.7 | High |
| Hertfordshire | Three Rivers | 93 | 141 | 455 | ↑ 57 | 151 | ↑ 31 | 113 | ↑ 18 | 26% | 5% | ↑ 0.5 | High |
| Hertfordshire | Welwyn Hatfield | 123 | 151 | 455 | ↑ 59 | 123 | ↑ 17 | 76 | ↑ 8 | 16% | 4% | ↑ 0.0 | High |
| Hertfordshire | St Albans | 148 | 192 | 426 | ↑ 26 | 129 | ↑ 25 | 70 | ↑ 21 | 24% | 5% | ↑ 0.7 | High |
| Hertfordshire | Dacorum | 155 | 243 | 386 | ↑ 36 | 157 | ↑ 58 | 103 | ↑ 36 | 58% | 6% | ↑ 1.8 | High |
| Hertfordshire | Stevenage | 88 | 96 | 411 | ↑ 17 | 109 | ↓ -11 | 49 | ↓ -38 | -9% | 4% | ↓ -0.4 | High |
| Hertfordshire | North Hertfordshire | 134 | 144 | 416 | ↑ 23 | 108 | ↑ 20 | 49 | ↓ -3 | 23% | 4% | ↑ 0.5 | High |

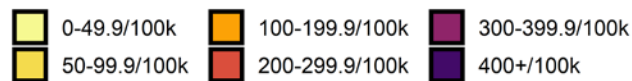
Case rate map by local authority: 30 Nov to 06 Dec 2020

| Rank | Local Authority | Case Rate (per 100,000) | Number of cases (1 week) |
|------|---------------------|-------------------------|--------------------------|
| 1 | Broxbourne | 293.0 | 285 |
| 2 | Watford | 216.4 | 209 |
| 3 | Hertsmere | 159.2 | 167 |
| 4 | East Hertfordshire | 152.9 | 229 |
| 5 | Dacorum | 136.3 | 211 |
| 6 | Three Rivers | 131.8 | 123 |
| 7 | St Albans | 122.6 | 182 |
| 8 | Welwyn Hatfield | 117.0 | 144 |
| 9 | Stevenage | 111.6 | 98 |
| 10 | North Hertfordshire | 98.8 | 132 |

Hertfordshire
COVID-19 cases: 30 Nov to 06 Dec 2020
 Weekly case rates per 100,000 population by local authority



Covid-19 rate by local authority

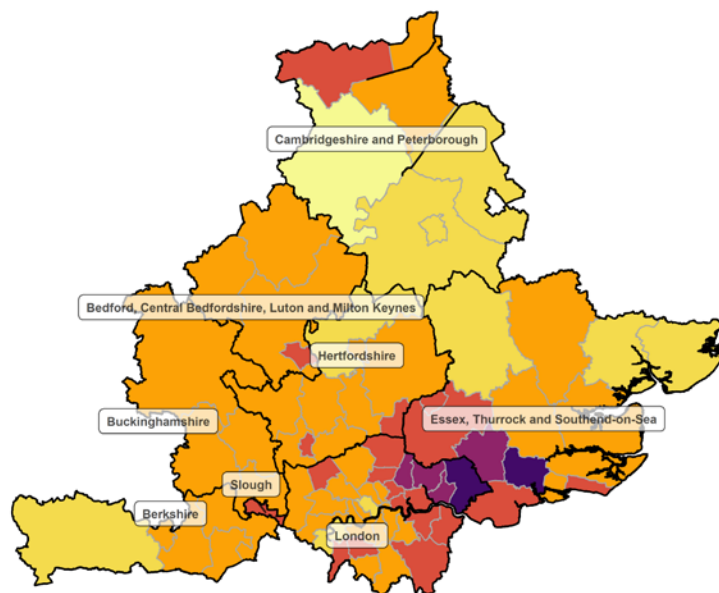


Data from SGSS; Pillar 1 and 2 testing. Figure by Outbreak Surveillance Team, Public Health England.

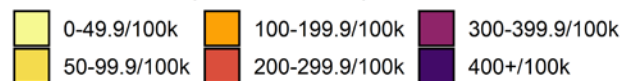
Contains National Statistics data including 2019 population estimates Â© Crown copyright and database right 2020

Extended area map by local authority: 30 Nov to 06 Dec 2020

Hertfordshire and surrounding areas COVID-19 cases: 30 Nov to 06 Dec 2020 Weekly case rates per 100,000 population by local authority



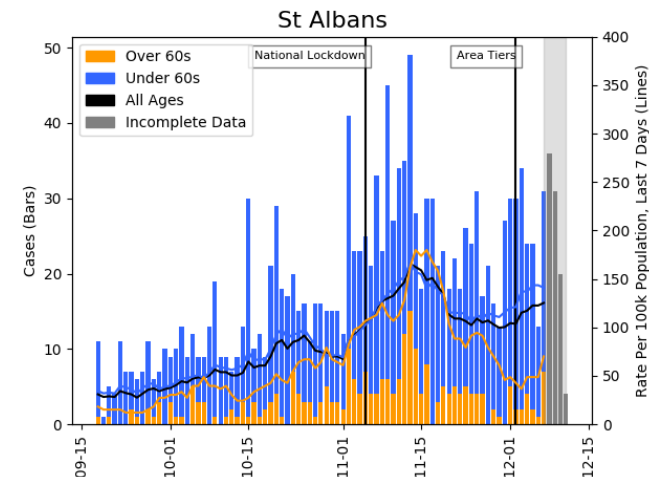
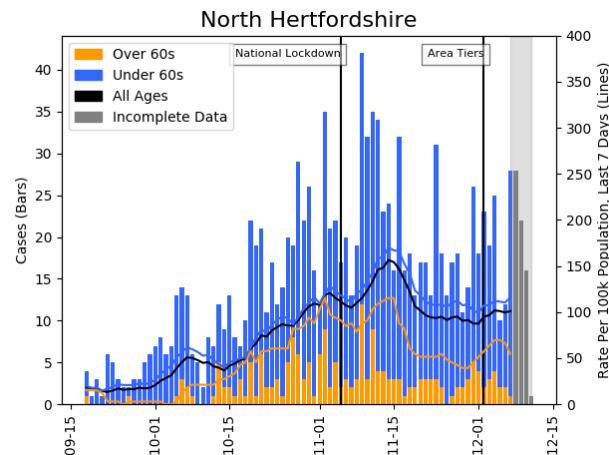
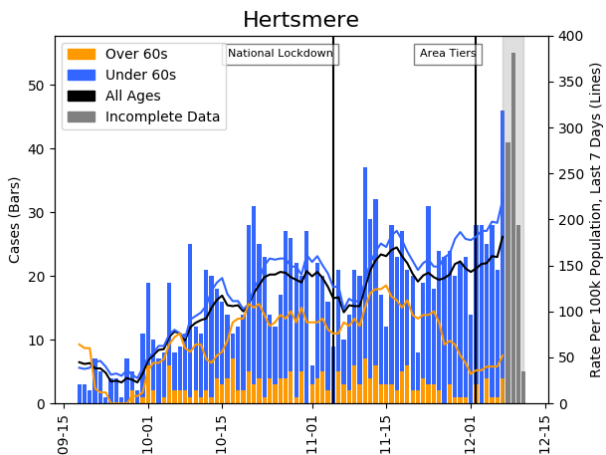
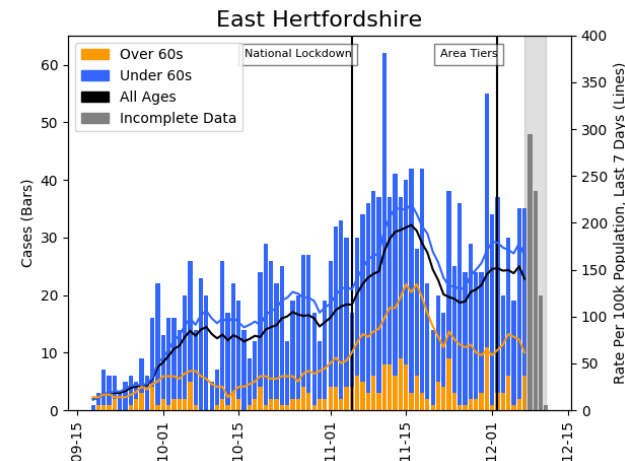
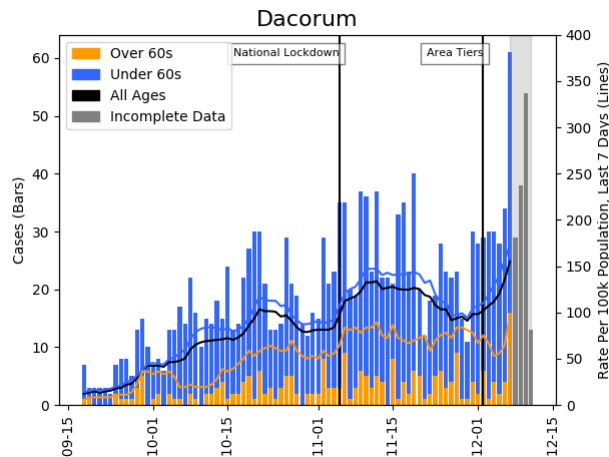
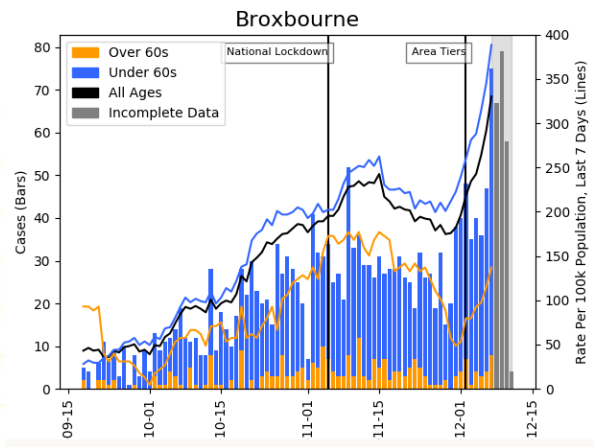
Covid-19 rate by local authority



Data from SGSS; Pillar 1 and 2 testing. Figure by Outbreak Surveillance Team, Public Health England.

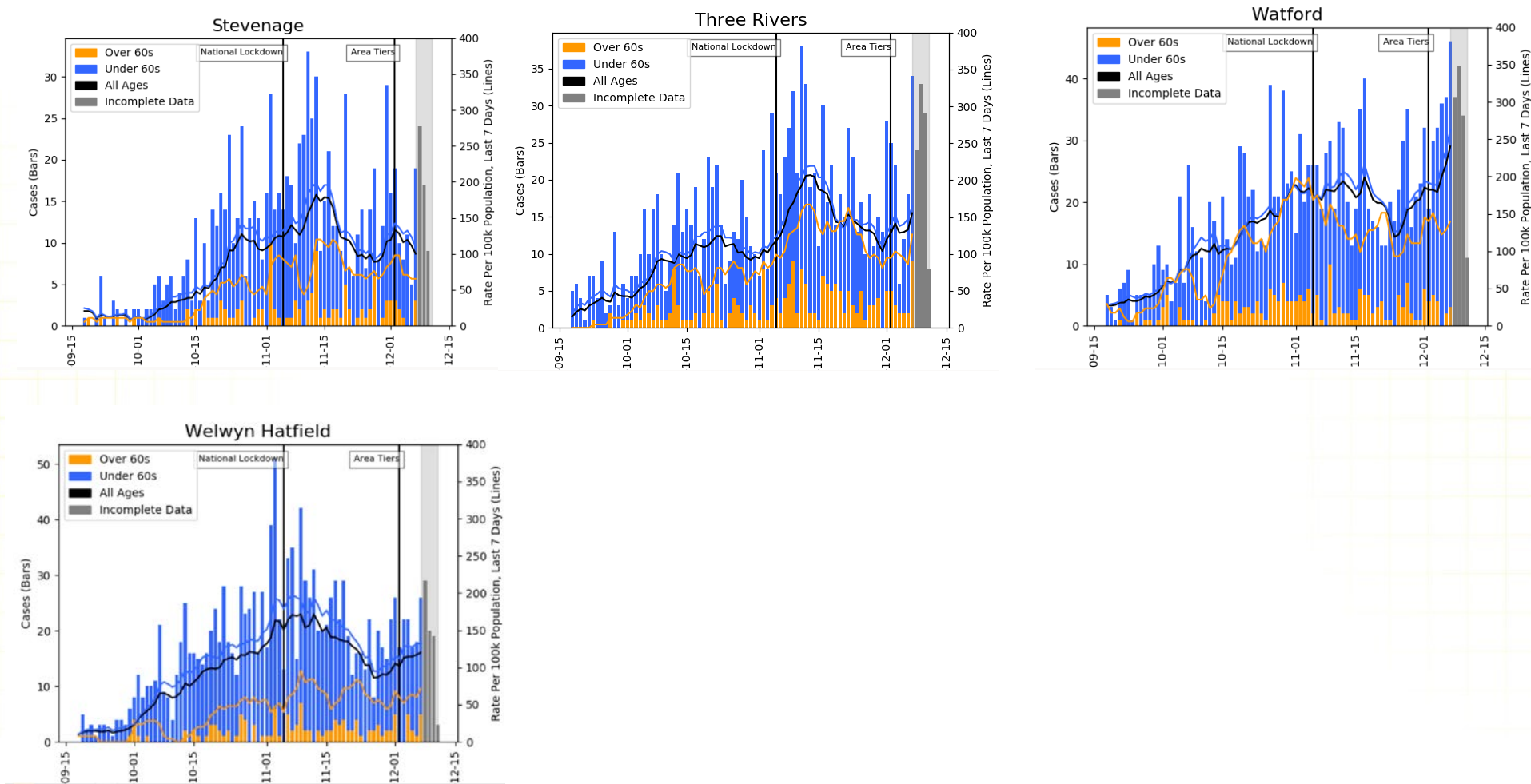
Contains National Statistics data including 2019 population estimates Â© Crown copyright and database right 2020

Hertfordshire: Summary case count and case rate charts to 11 Dec 2020



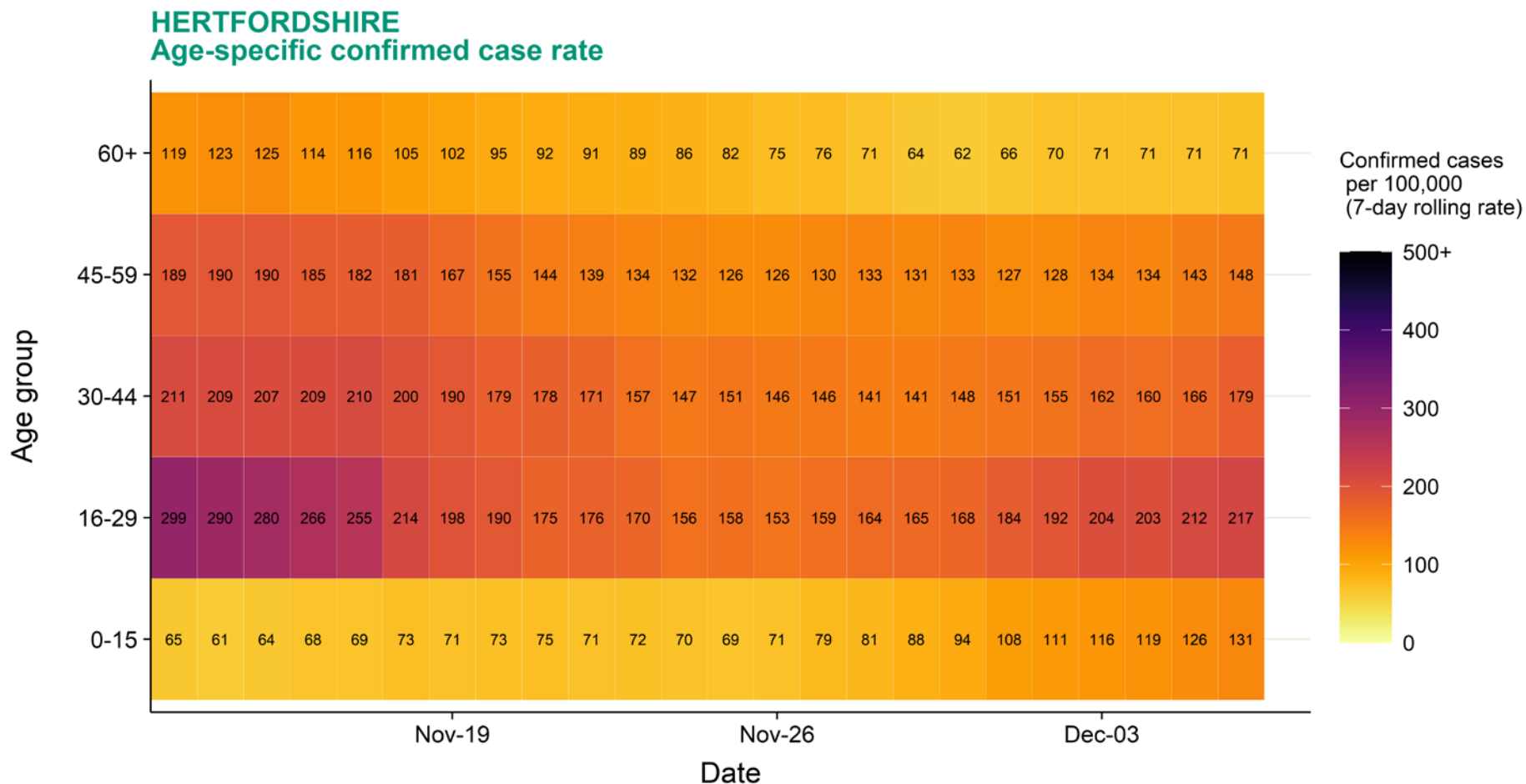
Stacked bars show the total number of cases by specimen date (left-hand axis). Solid lines show 7-day-average rolling case rates per 100k population (right-hand axis). The most recent four days of data are incomplete and shaded in grey.

Hertfordshire: Summary case count and case rate charts to 11 Dec 2020



Stacked bars show the total number of cases by specimen date (left-hand axis). Solid lines show 7-day-average rolling case rates per 100k population (right-hand axis). The most recent four days of data are incomplete and shaded in grey.

Case rate heatmap for Hertfordshire : 13 Nov to 06 Dec 2020



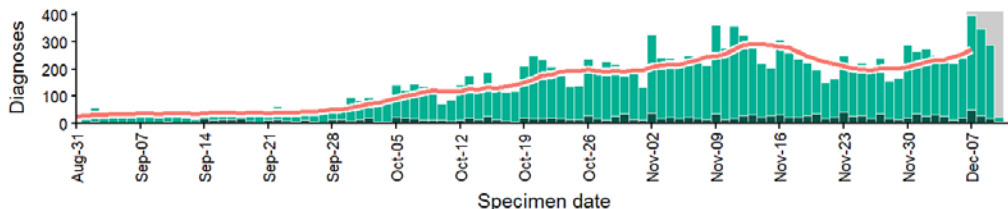
Source: Case data from SGSS. Produced by Outbreak Surveillance Team, PHE

Contains National Statistics data © Crown copyright and database right 2020

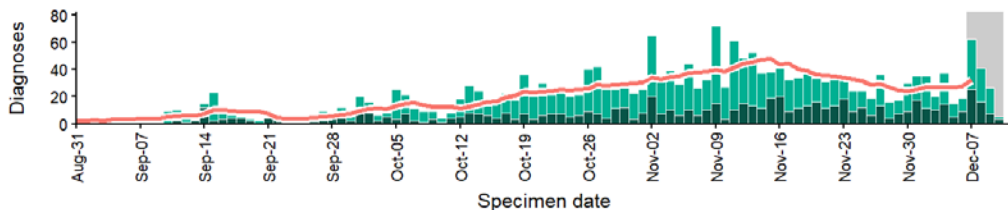
Regional case numbers, testing numbers and positivity, Hertfordshire : 01 Sep to 10 Dec 2020

HERTFORDSHIRE Cases and persons tested up to December 10 2020

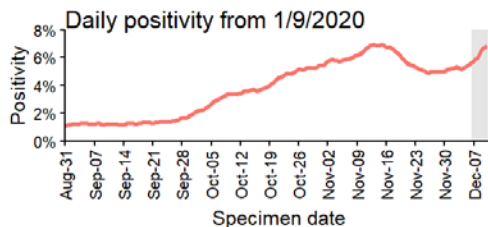
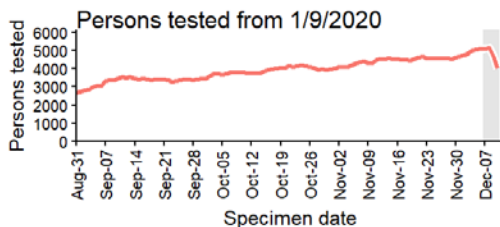
Regional daily cases from 1/9/2020: ALL AGES



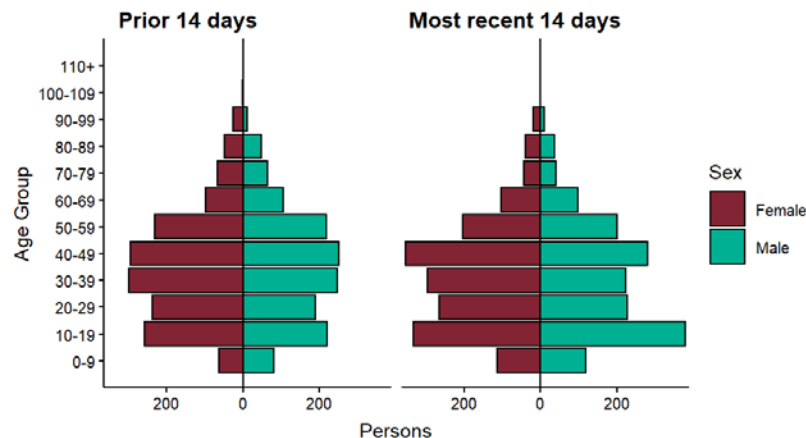
Regional daily cases from 1/9/2020: 60+ YEARS ONLY **NOTE: different y-axis scale**



4 days with incomplete data Pillar 1 Pillar 2 Total 7 day moving average (P1 + P2)



Age-sex pyramid for confirmed cases in past 14 days (November 27 2020 to December 10 2020) and prior 14 days (November 13 2020 to November 26 2020) 17 persons excluded due to missing gender or age.



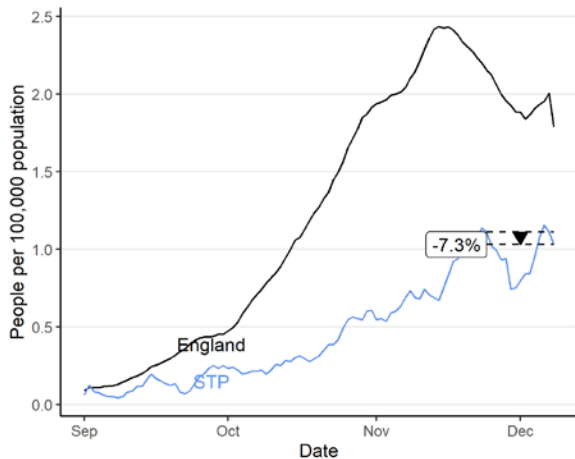
Data from SGSS. Produced by Outbreak Surveillance Team, PHE

Hospital Metrics: Hertfordshire and West Essex

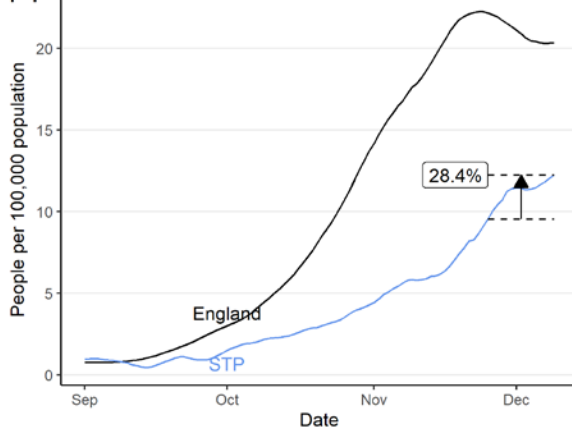
Hospital metrics: Hertfordshire and West Essex

Time series plots use 7 day rolling averages across data. Vertical arrows show the percentage change for that STP in the last 14 days, with the percentage given.

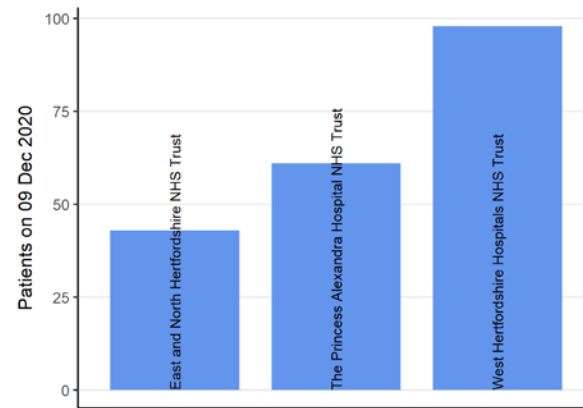
COVID-19 hospital admissions per 100,000 population



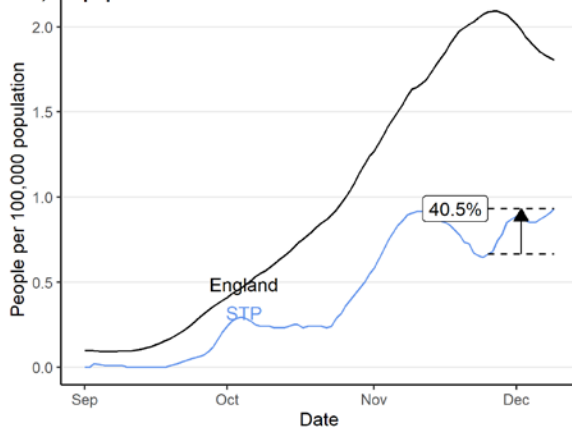
Total beds occupied by COVID-19 patients per 100,000 population



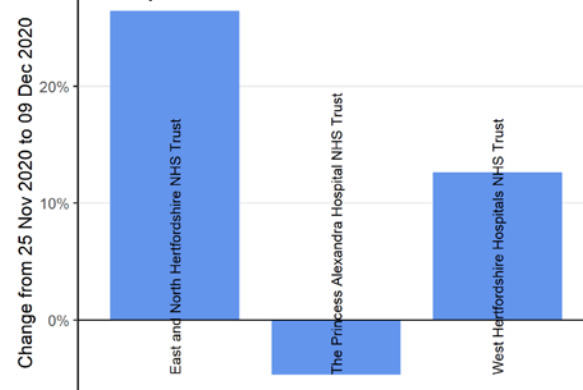
Total beds occupied by people with COVID-19 for specific trusts



Mechanical ventilation beds occupied by COVID-19 patients per 100,000 population



Change in last 14 days in total beds occupied by people with COVID-19 for specific trusts



Source: Data from NHS COVID-19 Hospital Activity publications, <https://www.england.nhs.uk/statistics/statistical-work-areas/covid-19-hospital-activity>, from 01 September 2020 to 09 December 2020. Produced by Joint Biosecurity Centre.

Annex A

Annex A: Hospital Metrics, further information

These graphs show health care data from hospitals, about admissions and bed occupancy, as well as staff absence at different times.

They are presented for areas of Sustainability and Transformation Partnership (STPs), which cover all of England, and reflect where local NHS organisations and councils drew up shared proposals to improve health and care in the areas they serve.

The graphs (line graphs) show changes in time, of numbers of people admitted to hospital with COVID-19, and total beds occupied as well as mechanical ventilation beds occupied. These are shown per 100,000 population to support comparability and use 7 day rolling averages across data to smooth day-to-day variability. The graphs show the trend for the STP in blue, and make a comparison to the trend across England, in black. The vertical arrows show the percentage change in the admissions or beds occupied for that STP in the last 14 days of data, with the percentage change given.

The graphs (BarCharts) on the righthand side show, for specific NHS trusts in the STP: total beds occupied on the latest day with data are available (top), and the percentage change in the last 14 days (bottom). A decrease in bed occupancy is shown by a negative change.