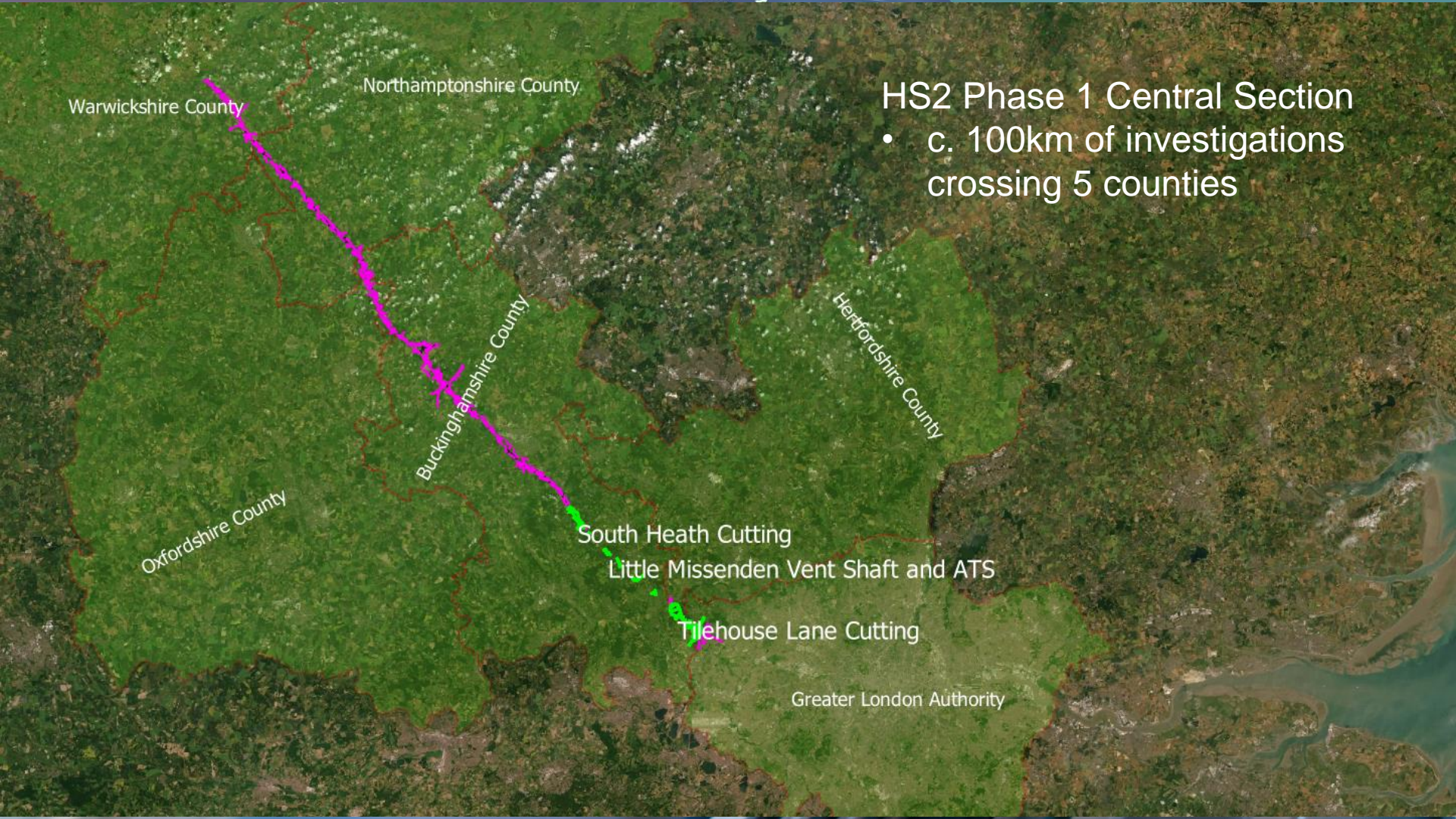


HS2 Phase 1 Heritage sub-group Progress update Central section Enabling Works HERDS

Fusion JV (Morgan Sindall Infrastructure BAM Nuttall Ltd and
Ferrovial Agroman)

16 June 2020 – online meeting



Warwickshire County

Northamptonshire County

HS2 Phase 1 Central Section

- c. 100km of investigations crossing 5 counties

Buckinghamshire County

Hertfordshire County

Oxfordshire County

South Heath Cutting

Little Missenden Vent Shaft and ATS

Tilehouse Lane Cutting

Greater London Authority

Post excavation analysis, publication and archives

Post excavation assessment

Process from desk study to post excavation assessment

Mitigation:

1. Area Excavation
2. Monitoring and CIR
3. Preservation by design

Trench and test pit evaluations – evidence based site selection

No data areas – further surveys to test some negative areas

Routewide assessments

Geo-archaeological evaluation: Holocene Alluvial and Pleistocene catchments

Woodland and parish boundary evaluations

Remote sensing: Lidar; hyperspectral; magnetometry

Baseline: Desk study (AP's; soils; geotechnical; PAS; HER; RRS & Engalid data)

Central area HERDS

Scope

- 3887 ha of land
- 386 fieldwork events defined
- @ 198 site locations
- Potentially c.50 additional mitigation areas to define in 2020
- Fieldwork to be largely complete by end of 2021

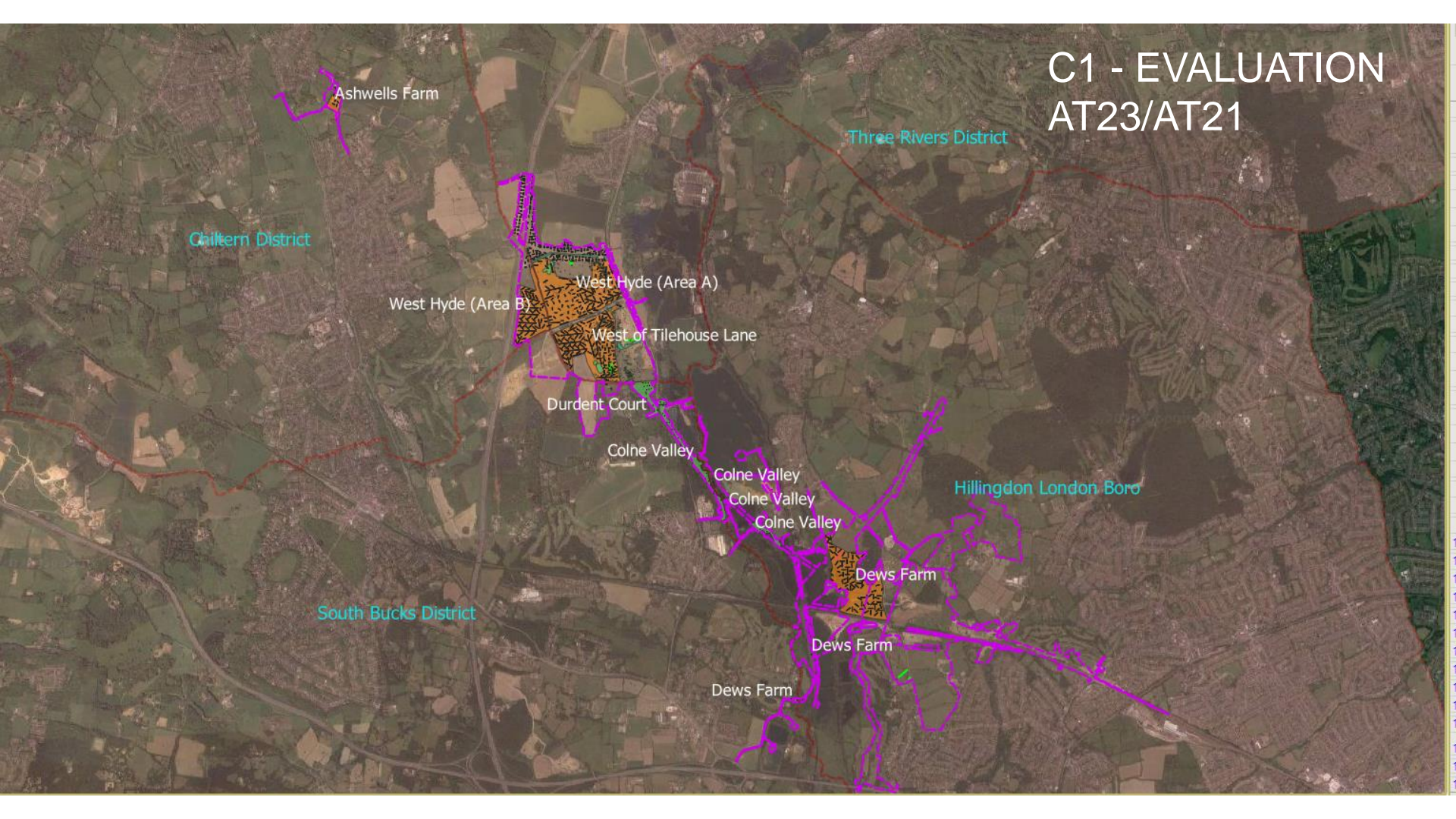
Activity	Code	Count
Building recording/Setting survey	AT06/AT15	27
Magnetometry survey	AT17	122
Metal detecting survey	AT19	3
Fieldwalking survey	AT20	5
Test pit	AT21	38
Borehole survey	AT05	13
Trial trench	AT23	108
Archaeological Excavation	AT03	52
Archaeological monitoring	AT02	15
	Total	386

Progress 2019-20

- Geophysical survey c. 99% complete (1 site remaining)
- Trial trenching c. 65% complete
- Archaeological Excavation (mitigation) – 7 sites complete
- Archaeological monitoring ongoing
- Post excavation assessment commenced



C1 - EVALUATION AT23/AT21



Ashwells Farm

Chiltern District

Three Rivers District

West Hyde (Area A)
West Hyde (Area B)
West of Tilehouse Lane

Durdent Court

Colne Valley

Colne Valley
Colne Valley
Colne Valley

Hillingdon London Boro

South Bucks District

Dews Farm

Dews Farm

Dews Farm

C1 - MITIGATION AT03

Three Rivers District

Chiltern District

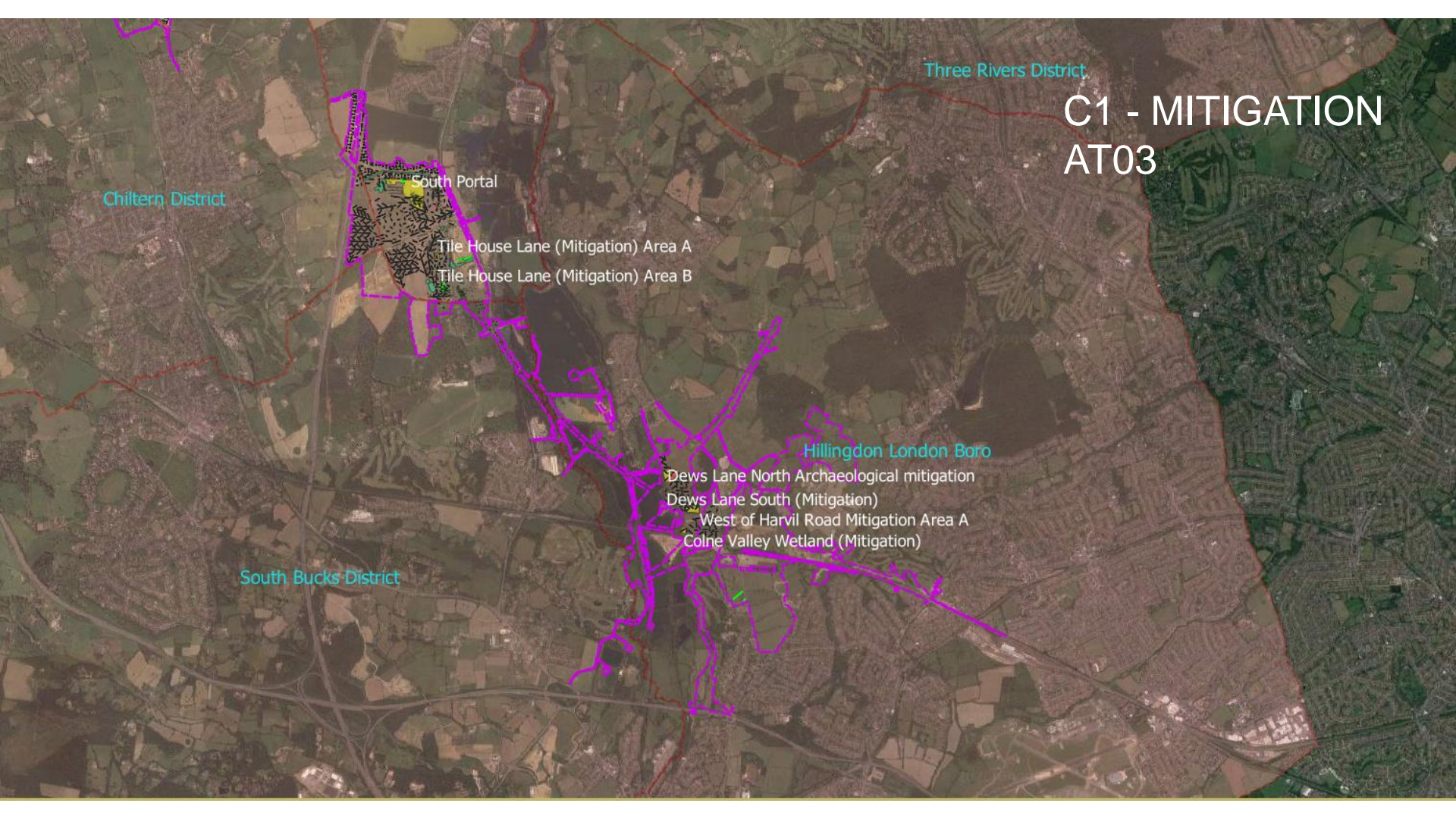
South Portal

Tile House Lane (Mitigation) Area A
Tile House Lane (Mitigation) Area B

Hillingdon London Boro

Dews Lane North Archaeological mitigation
Dews Lane South (Mitigation)
West of Harvil Road Mitigation Area A
Colne Valley Wetland (Mitigation)

South Bucks District



C1 - EVALUATION AT23

North Portal

Kings Pond Cottage

Pipers Wood Cottages

Chiltern District

Whielden Lane

Three Rivers District

Wycombe District

Upper Bottom House Farm



C2 south - EVALUATION AT23

Stoke Mandeville Bypass

Stoke House

Mill House Farm

North of Nash Lee

Icknield Way

Wendover Parish Boundary

Wellwick Farm

Aylesbury Vale District

Grove Farm

Rocky Lane

Upper Wendover Dean Farm

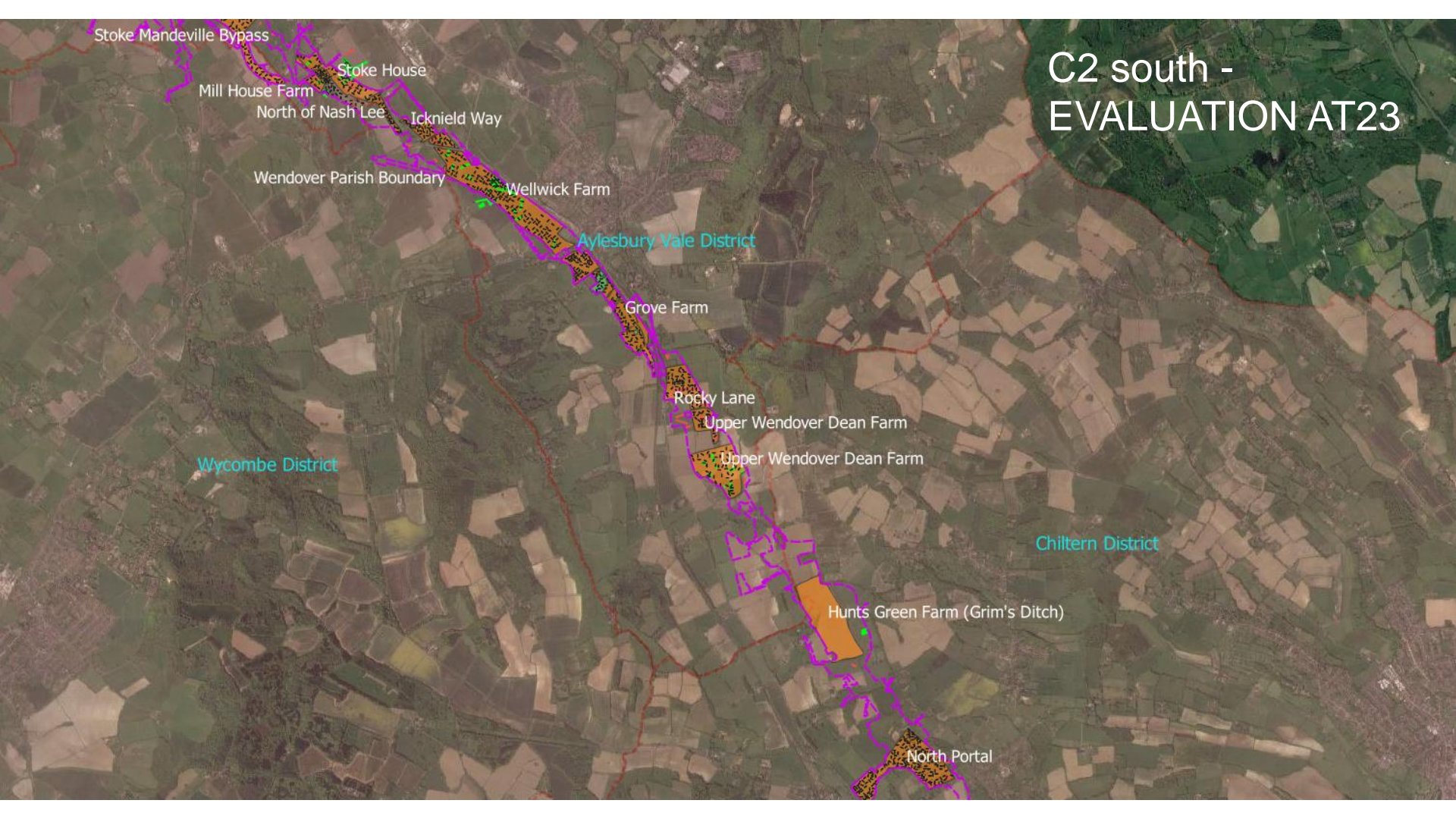
Upper Wendover Dean Farm

Wycombe District

Chiltern District

Hunts Green Farm (Grim's Ditch)

North Portal



C2 SOUTH MITIGATION AT03

Wellwick Farm

Wellwick Farm

Wellwick Farm

Ellesborough Road (Mitigation)

Ellesborough Road (Mitigation)

Aylesbury Vale District

Grove Farm

Rocky Lane

Wycombe District

Chiltern District

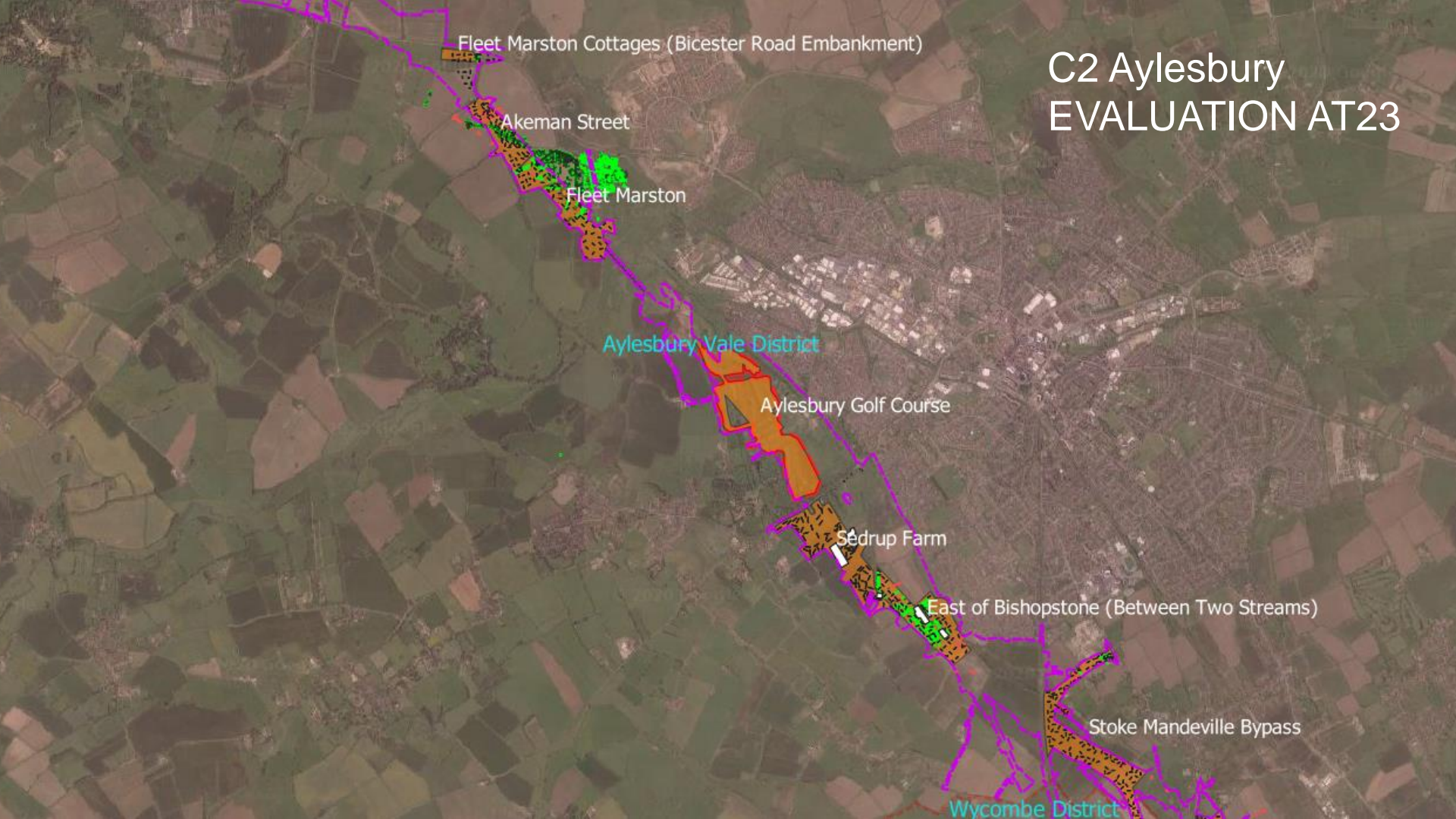
Chiltern Tunnel North Portal Archaeological Recording (east)

Chiltern Tunnel North Portal Archaeological Recording (east)

North Portal Great Missenden Haul Road mitigation



C2 Aylesbury EVALUATION AT23



Fleet Marston Cottages (Bicester Road Embankment)

Akeman Street

Fleet Marston

Aylesbury Vale District

Aylesbury Golf Course

Sedrup Farm

East of Bishopstone (Between Two Streams)

Stoke Mandeville Bypass

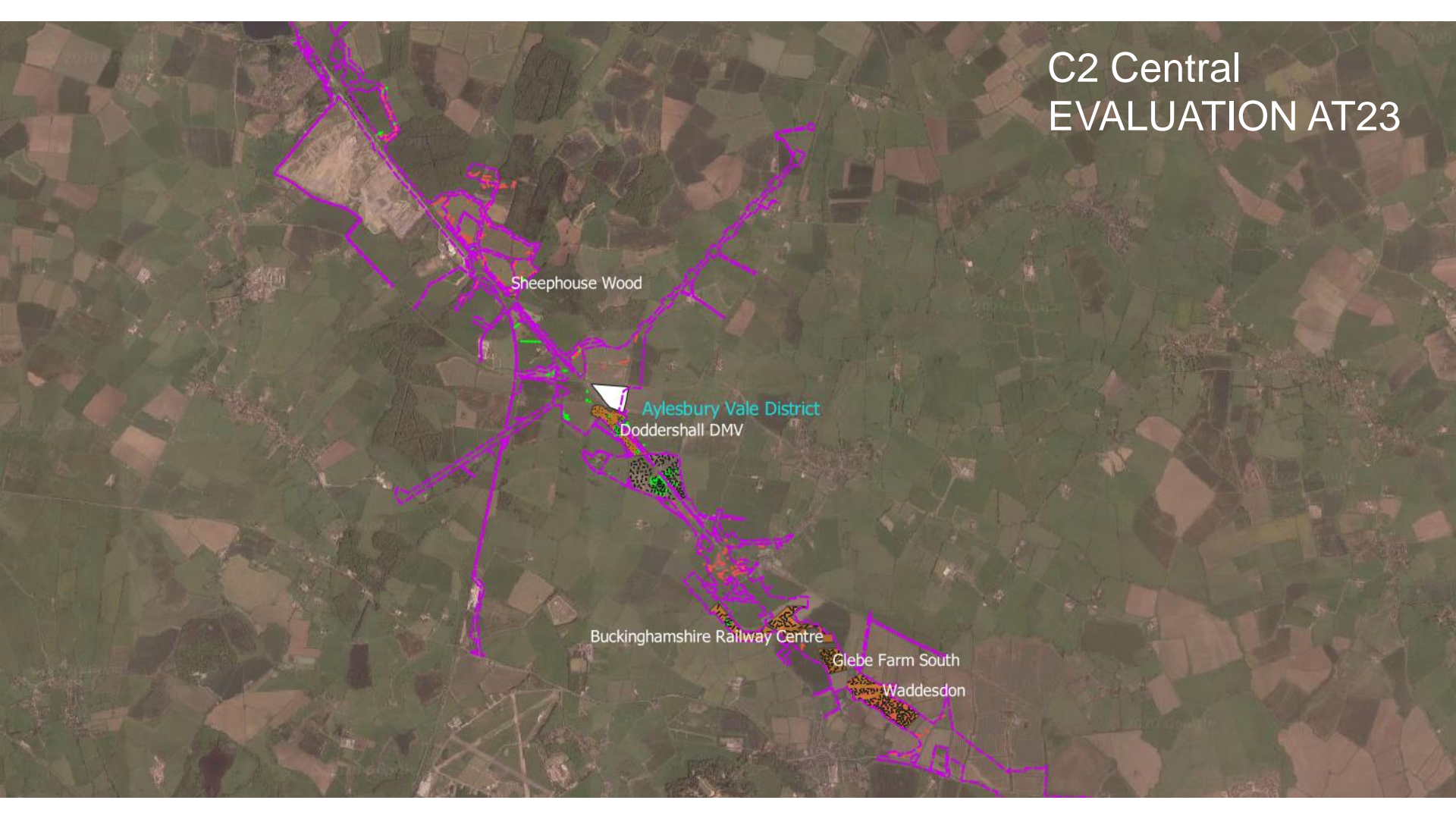
Wycombe District

C2 Aylesbury MITIGATION AT03

The map displays the town of Aylesbury and surrounding areas with various mitigation sites highlighted in red, green, and purple. District boundaries are shown in brown. The following labels are present on the map:

- B2 MITIGATION SITE Aylesbury Vale District
- Sedrup Farm SEDRUP_AREA B
- SEDRUP_AREA A
- TR63 EXPANSION EAST BISHOP_AREA A
- EAST BISHOP_AREA B EAST BISHOP_AREA C
- Hall End (SM bypass mitigation)
- Stoke House Mitigation (Roman & medieval remains)
- Stoke House Mitigation (Roman & medieval remains)
- Stoke House Mitigation Urgent Works Area
- Wellwick Farm
- Wycombe District
- Chiltern D

C2 Central EVALUATION AT23



Sheephouse Wood

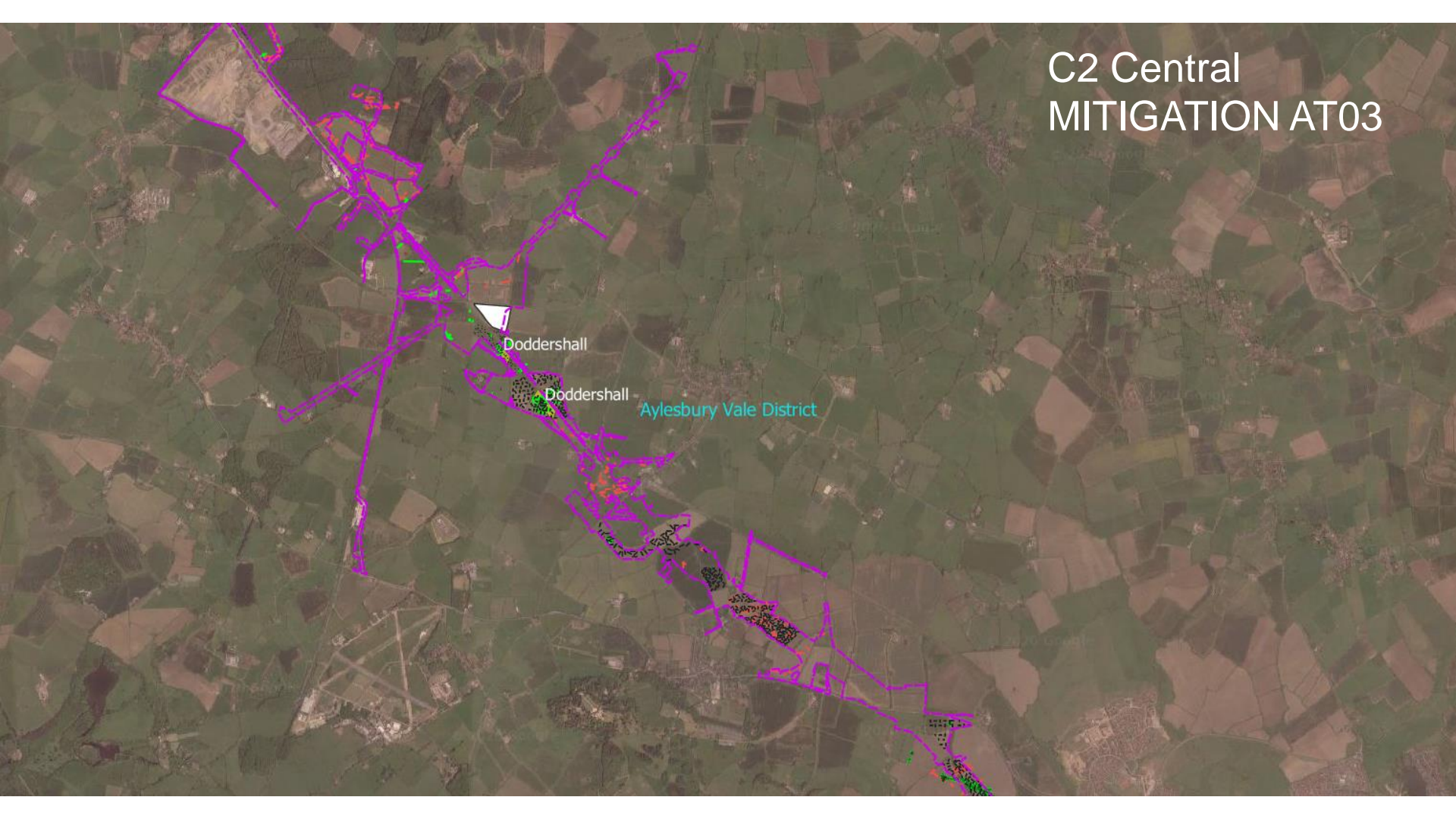
Aylesbury Vale District
Doddershall DMV

Buckinghamshire Railway Centre

Glebe Farm South

Waddesdon

C2 Central MITIGATION AT03



Doddershall

Doddershall

Aylesbury Vale District

C2 Central EVALUATION AT23 CALVERT TO FINMERE

Cherwell District

Aylesbury Vale District

The Oaks Farm
Warren Farm Warren Farm

Widmore Farm

Finmere Station

Newton Purcell

Manthorn Farm Chetwode

Goddington Padbury Brook

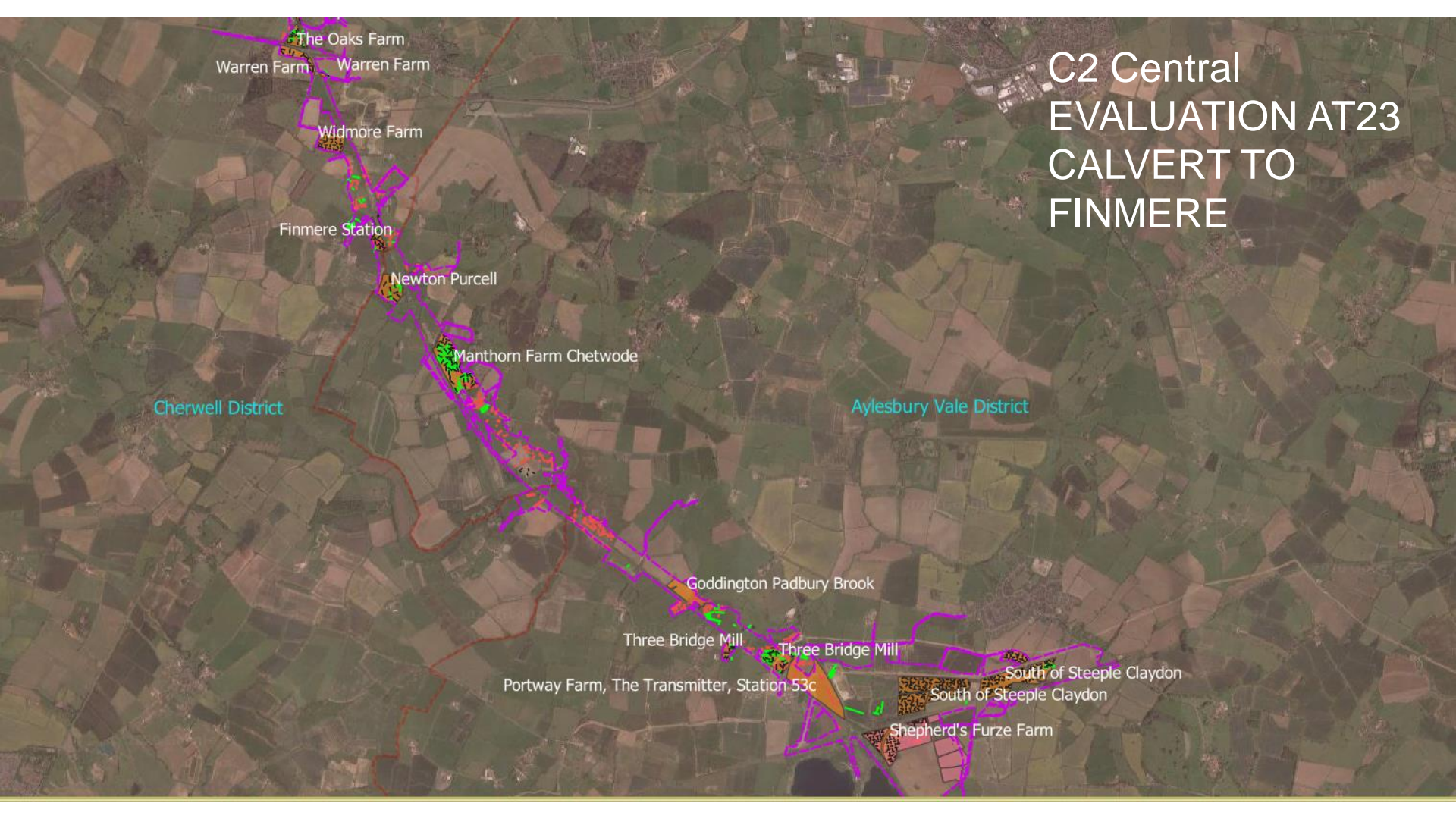
Three Bridge Mill Three Bridge Mill

Portway Farm, The Transmitter, Station 53c

South of Steeple Claydon

South of Steeple Claydon

Shepherd's Furze Farm



C2 Central MITIGATION AT03 CALVERT TO FINMERE

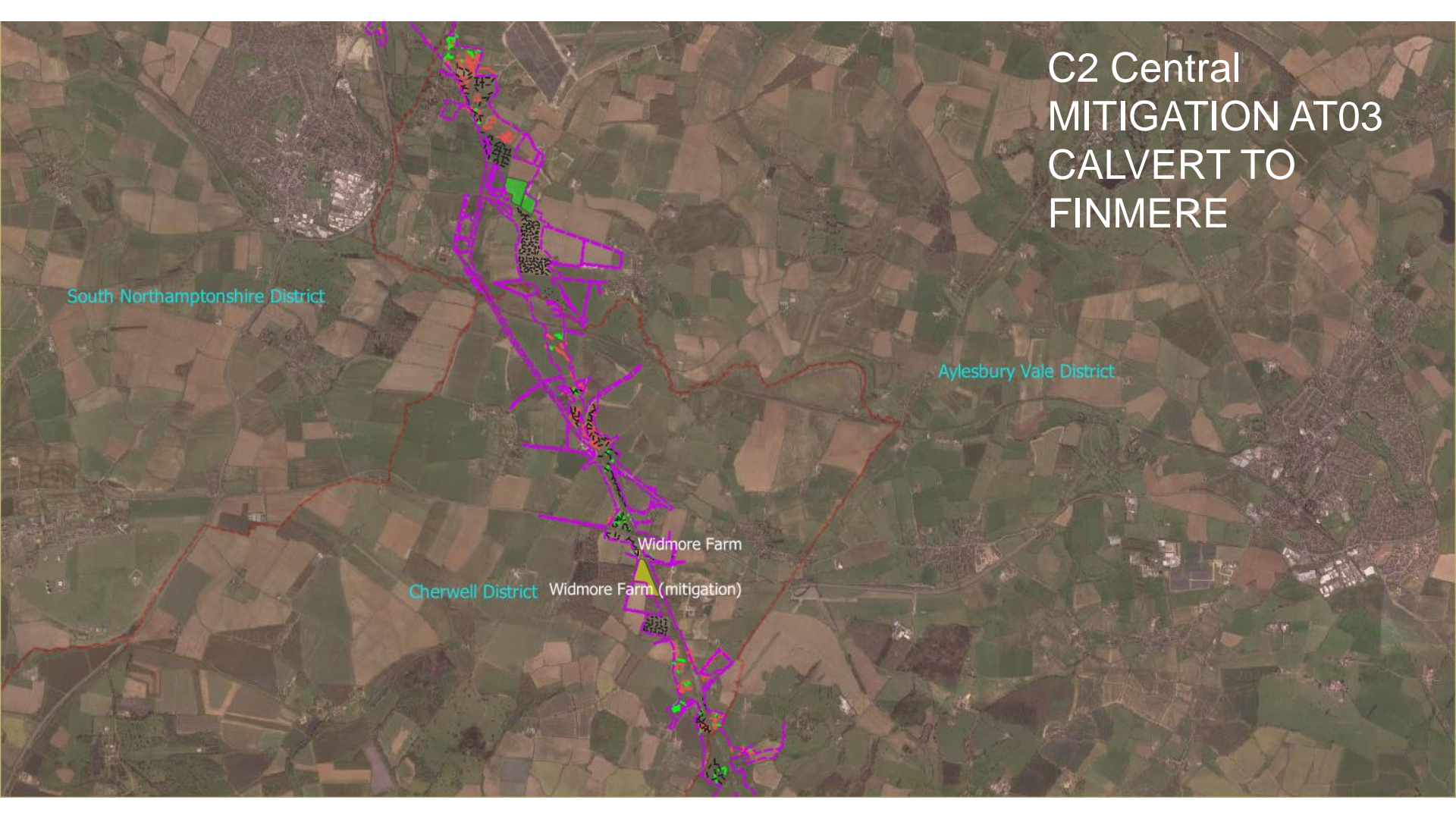
South Northamptonshire District

Aylesbury Vale District

Cherwell District

Widmore Farm

Widmore Farm (mitigation)



C2 Central EVALUATION AT23 FINMERE TO BRACKLEY

South Northamptonshire District

Aylesbury Vale District

Cherwell District

Radstone Manor Farm

Fox Covert Whitfield

East of Illet's Farm

Illet's Farm

Turweston Manor

Turweston

Grove Hill Farm

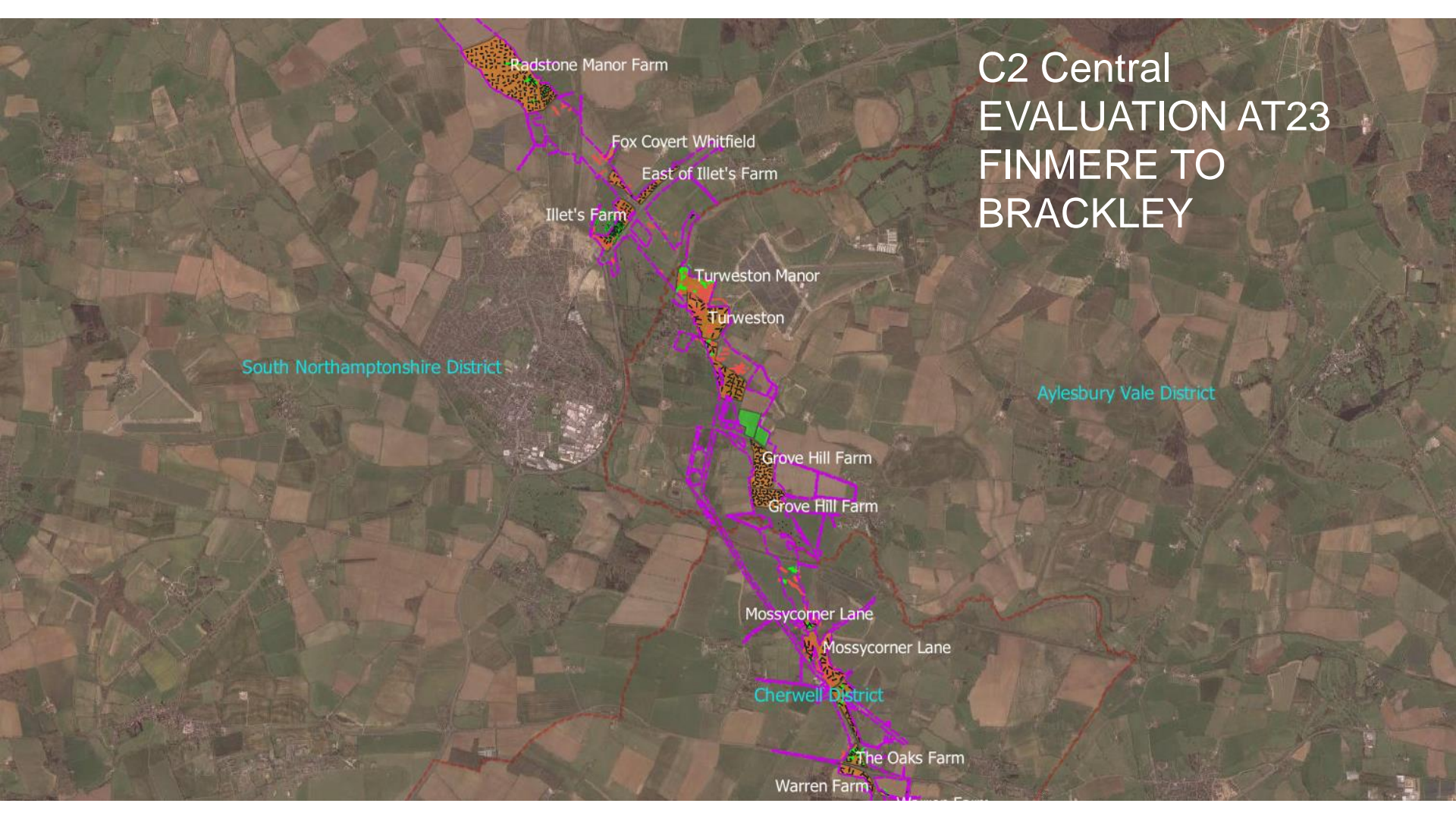
Grove Hill Farm

Mossycorner Lane

Mossycorner Lane

The Oaks Farm

Warren Farm



C3 SOUTH EVALUATION AT23 BRACKLEY TO CULWORTH

Cherwell District

West of Culworth Grounds Farm
Culworth Grounds Farm
Lower Thorpe Farm
Lower Thorpe Farm
Thorpe Mandeville Sulgrave Road (North))
Thorpe Mandeville Sulgrave Road (South)
Thorpe Mandeville Sulgrave Road (South)

Greatworth Park South
Greatworth Hall
South Northamptonshire District
Greatworth Fields

Halse Copse Farm

Radstone

Radstone Manor Farm

Fox Covert Whitfield

East of Illet's Farm

Illet's Farm

Aylesbury Vale District

C3 SOUTH MITIGATION AT03 BRACKLEY TO CULWORTH

Cherwell District

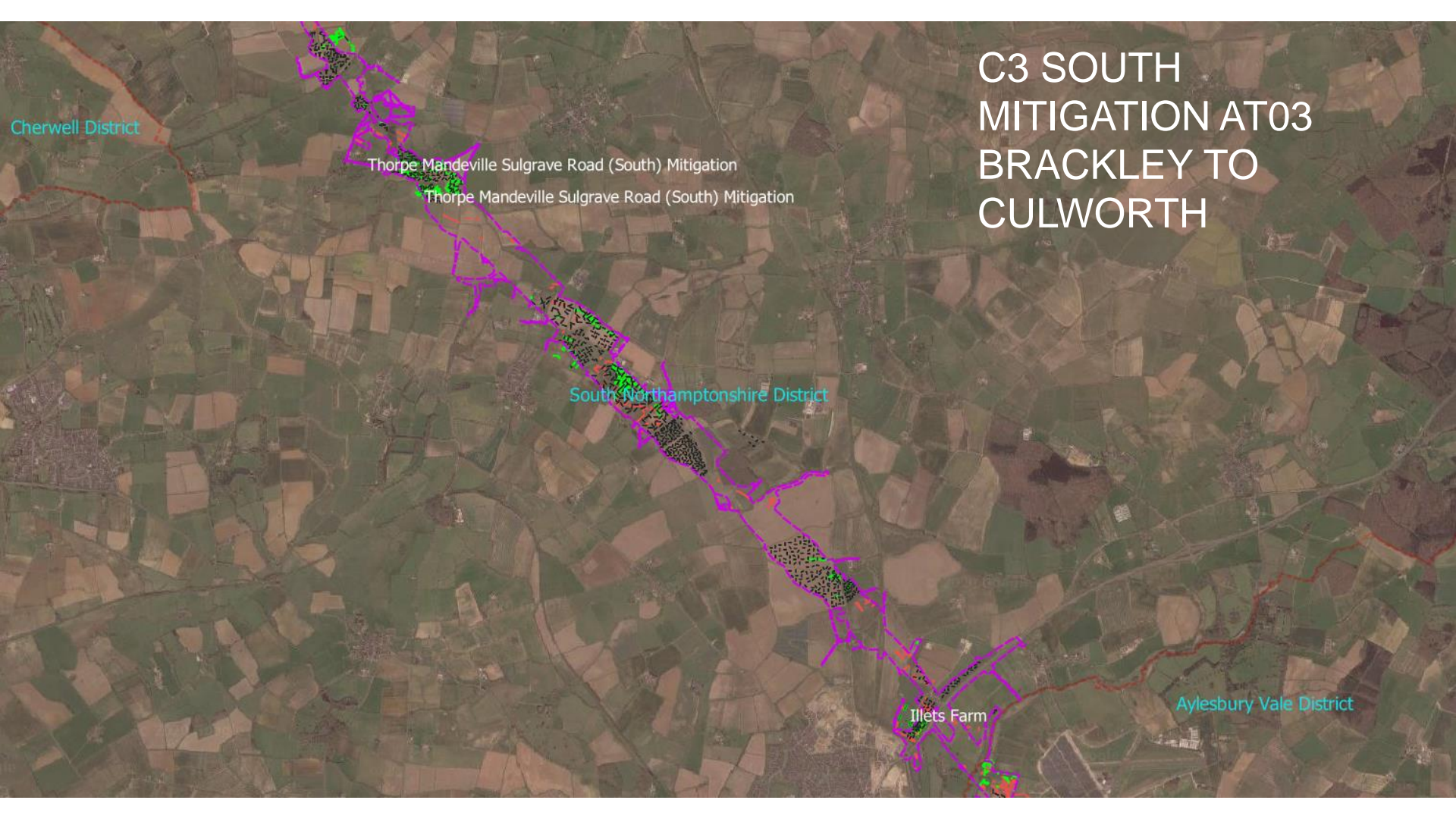
Thorpe Mandeville Sulgrave Road (South) Mitigation

Thorpe Mandeville Sulgrave Road (South) Mitigation

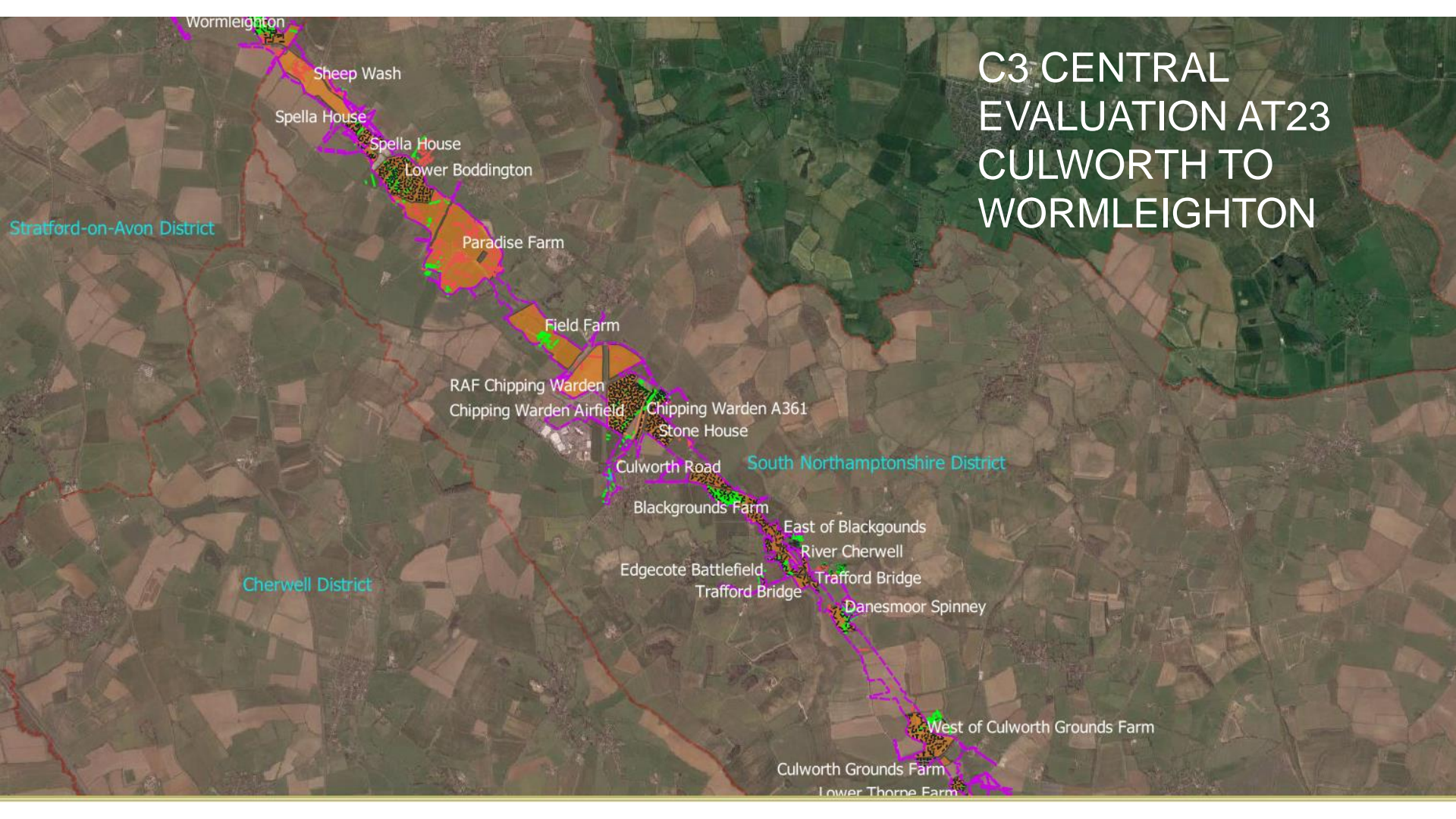
South Northamptonshire District

Illets Farm

Aylesbury Vale District



C3 CENTRAL EVALUATION AT23 CULWORTH TO WORMLEIGHTON



Wormleighton

Sheep Wash

Spella House

Spella House

Lower Boddington

Paradise Farm

Field Farm

RAF Chipping Warden

Chipping Warden Airfield

Chipping Warden A361

Stone House

Culworth Road

South Northamptonshire District

Blackgrounds Farm

East of Blackgrounds

River Cherwell

Edgecote Battlefield

Trafford Bridge

Trafford Bridge

Danesmoor Spinney

Cherwell District

West of Culworth Grounds Farm

Culworth Grounds Farm

Lower Thorne Farm

Stratford-on-Avon District

C3 CENTRAL MITIGATION AT03 CULWORTH TO WORMLEIGHTON

Stratford-on-Avon District

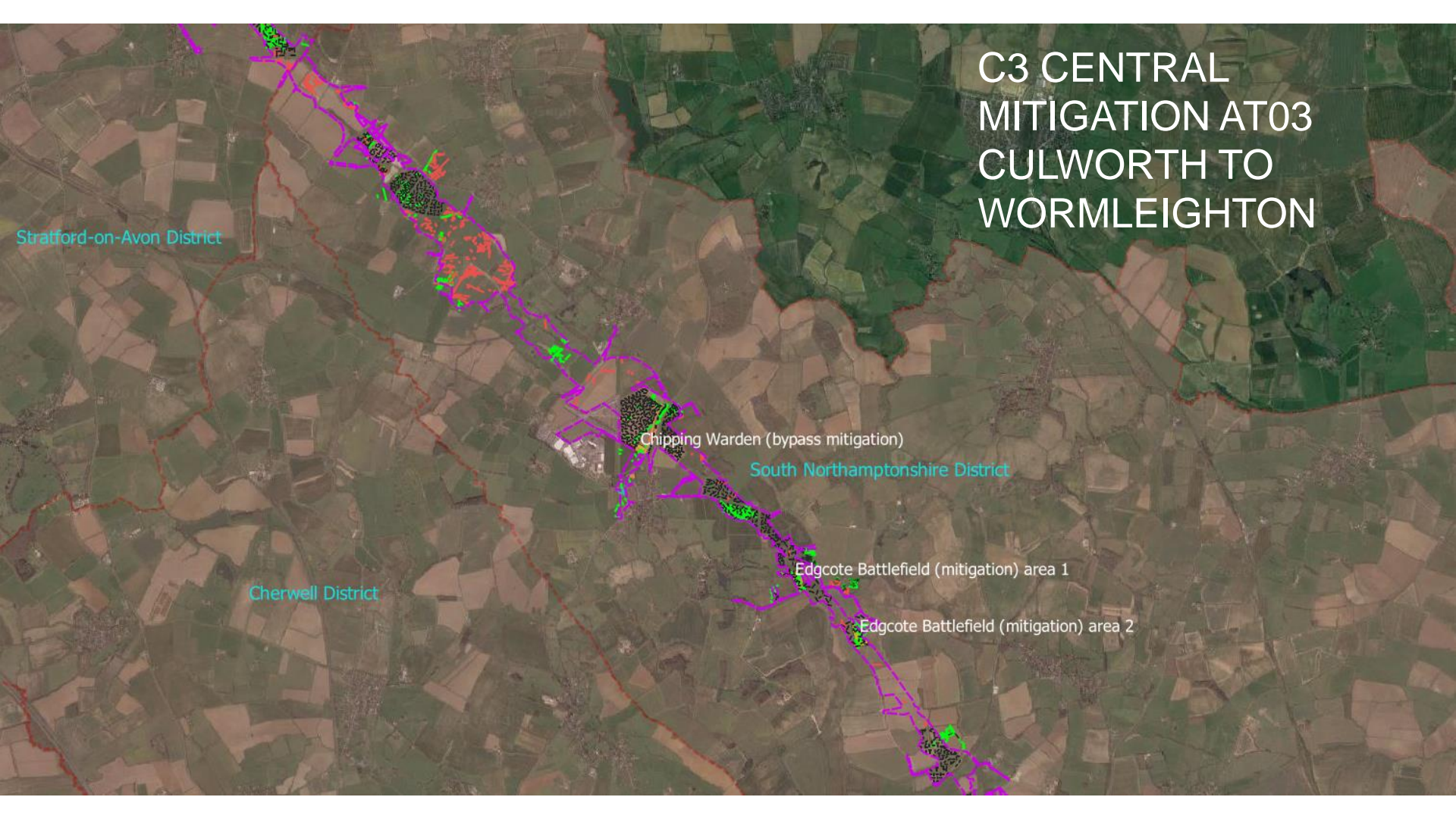
Chipping Warden (bypass mitigation)

South Northamptonshire District

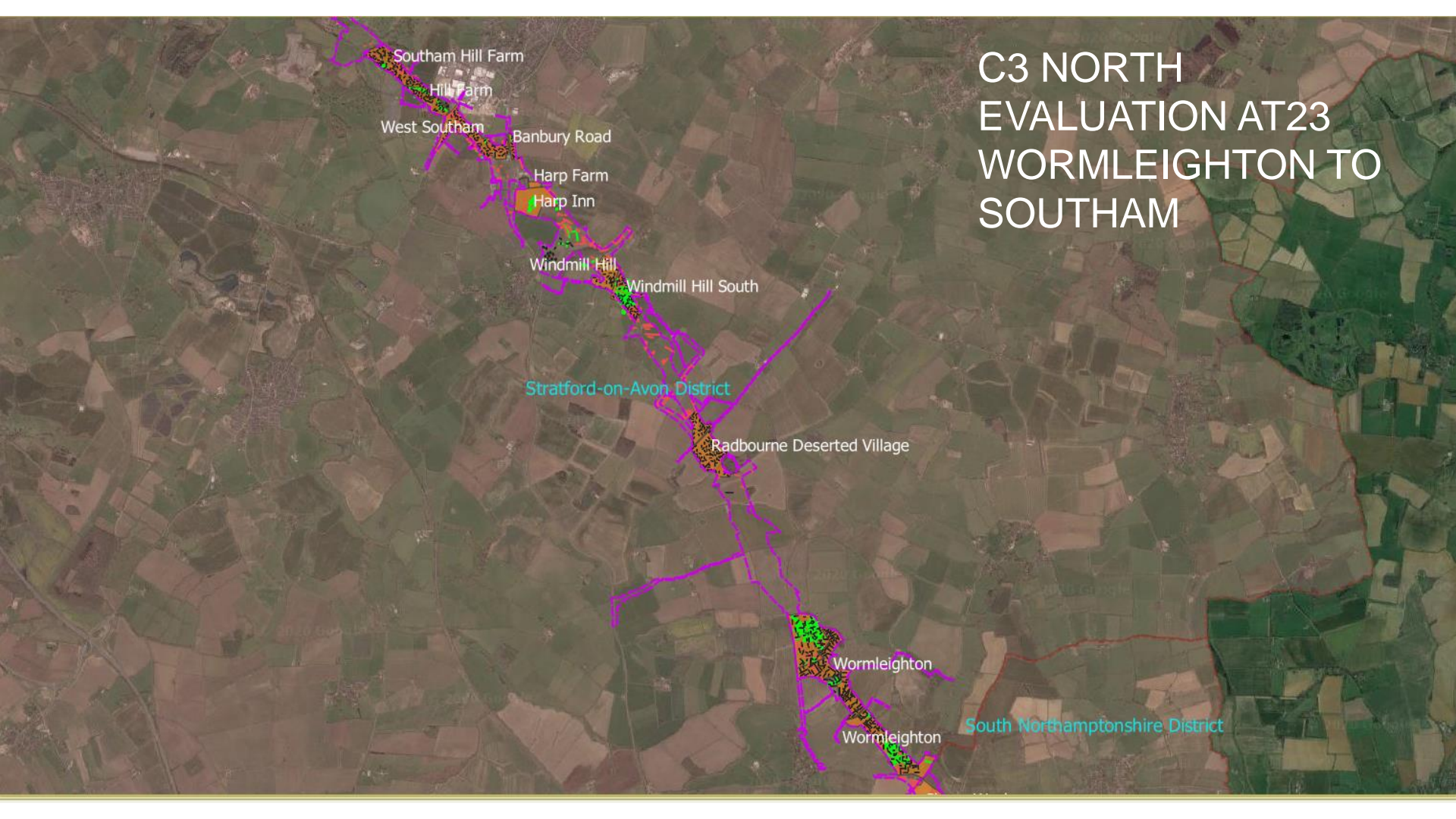
Cherwell District

Edgcote Battlefield (mitigation) area 1

Edgcote Battlefield (mitigation) area 2



C3 NORTH EVALUATION AT23 WORMLEIGHTON TO SOUTHAM



Southam Hill Farm

Hill Farm

West Southam

Banbury Road

Harp Farm

Harp Inn

Windmill Hill

Windmill Hill South

Stratford-on-Avon District

Radbourne Deserted Village

Wormleighton

Wormleighton

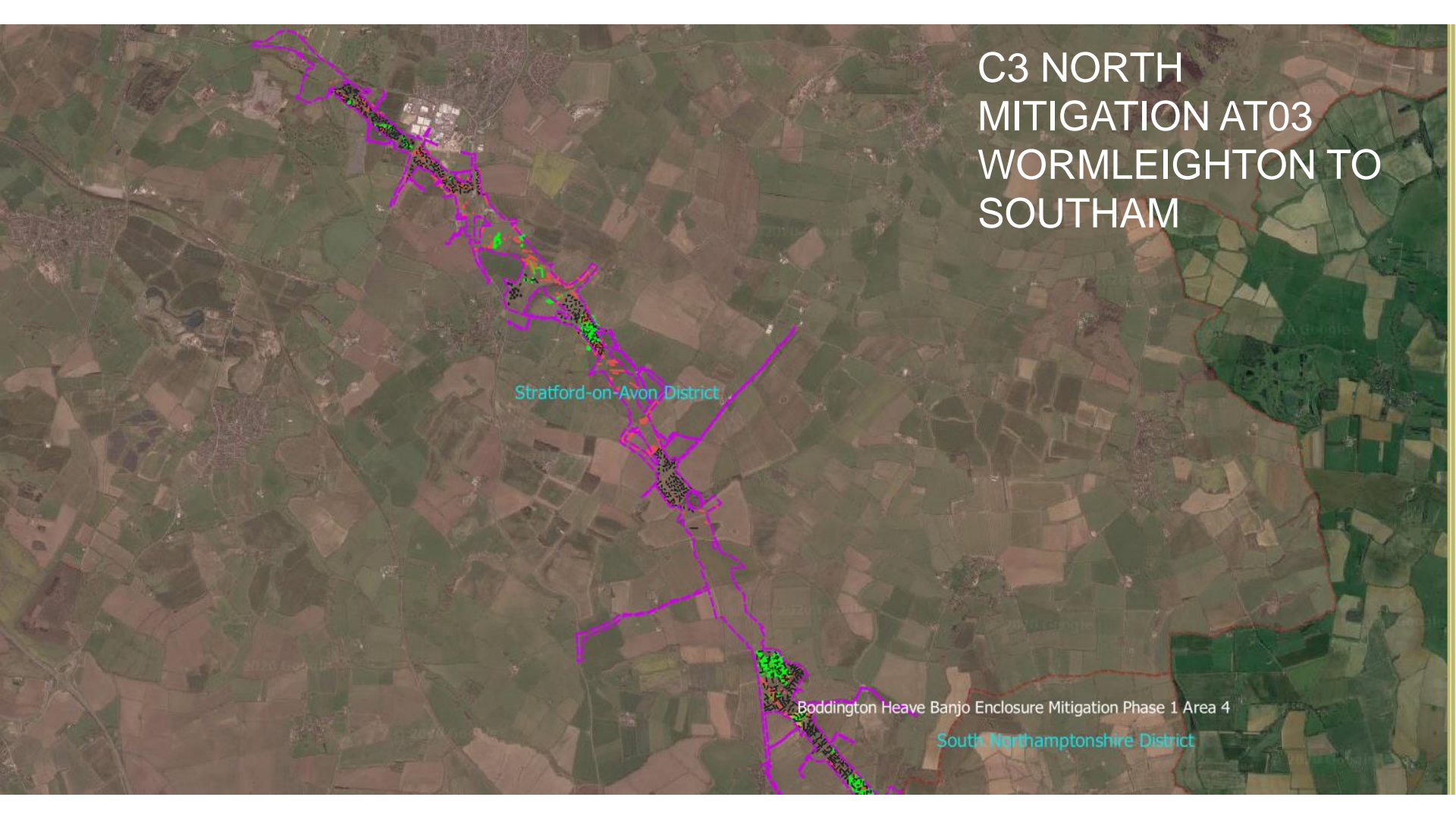
South Northamptonshire District

C3 NORTH MITIGATION AT03 WORMLEIGHTON TO SOUTHAM

Stratford-on-Avon District

Boddington Heave Banjo Enclosure Mitigation Phase 1 Area 4

South Northamptonshire District



Mitigation decision making

- **Excavation areas for research output, new project plans produced or accelerated process (proceed from trenches to mitigation on change control)**
- **Preservation by design**
- **Archaeological monitoring and construction integrated recording**
- **Post excavation assessment**

Mitigation Key documents

- Preservation by design
- Archaeological monitoring and construction integrated recording

AWHi: Project Plan for Archaeological monitoring and Construction Integrated Recording – Central area-route wide

Document no.: 1EW03-FUS-EV-REP-C000-009812

Revision	Date approved	Author	Checked by	Approved by	Reason for revision
C01	13-01-2020	Nick Finch	Iain Williamson	Jay Carver	First Issue
C02	27-03-2020	Nick Finch	Iain Williamson	Jay Carver	Second Issue
C03	08-06-20	Nick Finch	Iain Williamson	Jay Carver	Addresses HS2/MWCC comments

Key documents

- Post excavation assessment report and fieldwork archives shall proceed for each key site group
- UPD, analysis and publication subject to further procurement

HS2

Phase 1

Post Excavation Assessment Guidance

Document no: HS2-HS2-EV-GDE-000-000027

Revision	Author	Reviewed by	Approved by	Date	Revision Details
001	Andrea Bradley	John Halsted	Michael Court	06/04/20	For issue to EWCs