

Dynamic CO-CIN report to SAGE and NERVTAG (Recent cases)

Dynamic content updated: 2020-11-18 03:36:22.

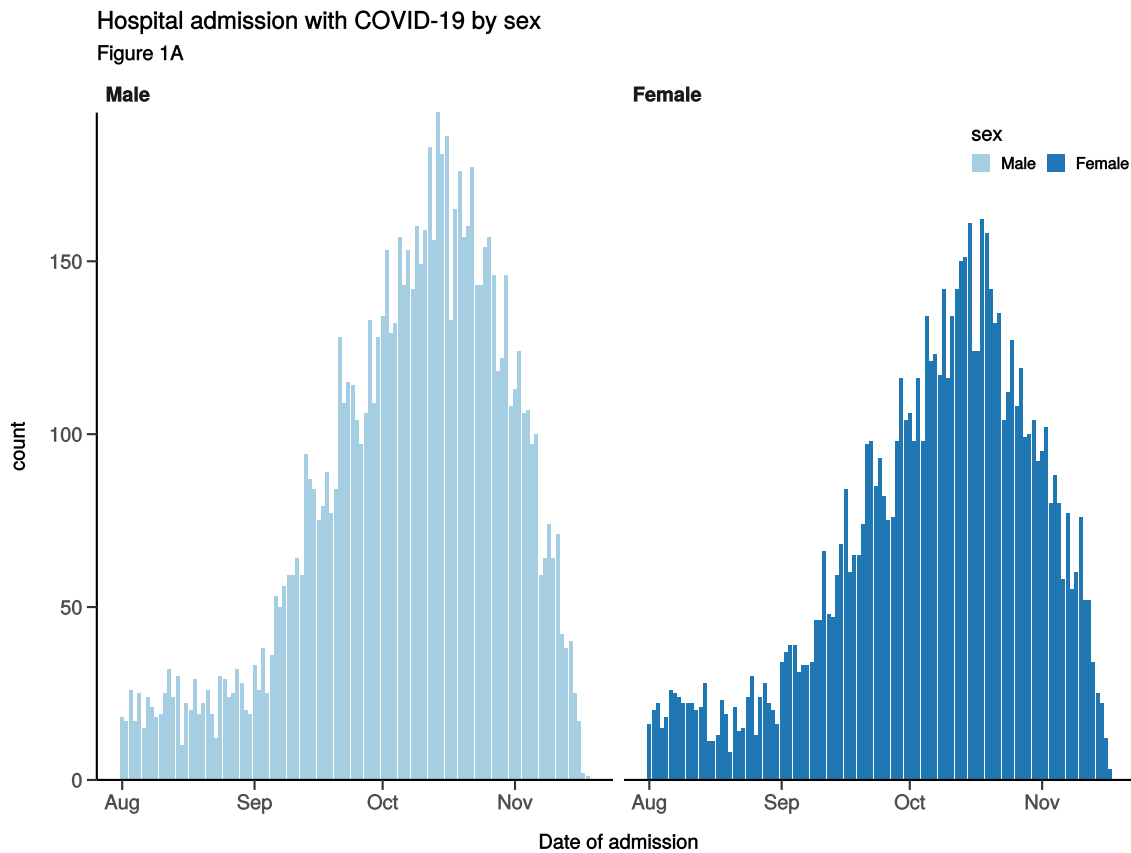
Executive summary

Includes patients admitted after 01 August 2020

There are 16342 patients included in CO-CIN. Of these, 2132 patient(s) have died and 2062 required ICU. 8437 have been discharged home.

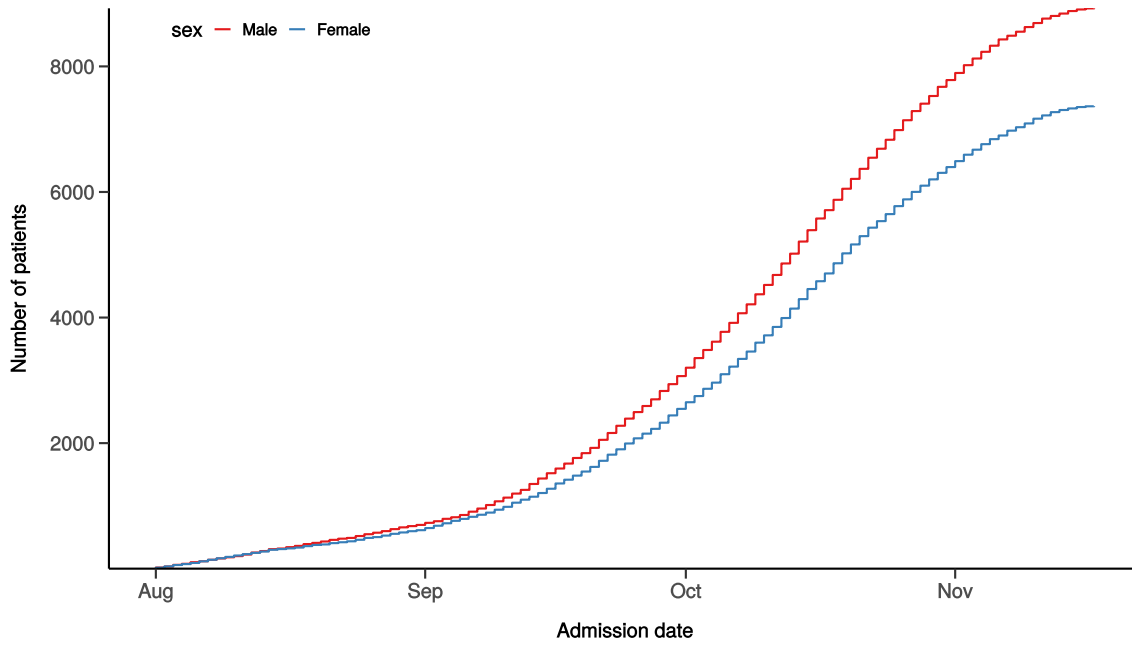
Admission

Figure 1



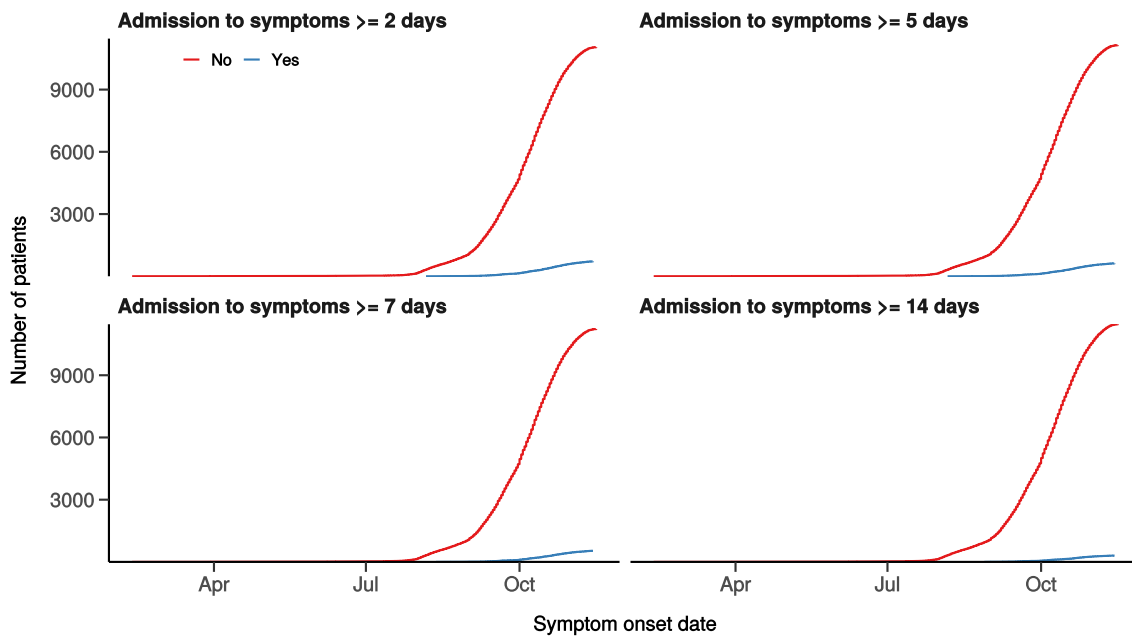
Hospital admission with COVID-19 by sex

Figure 1B



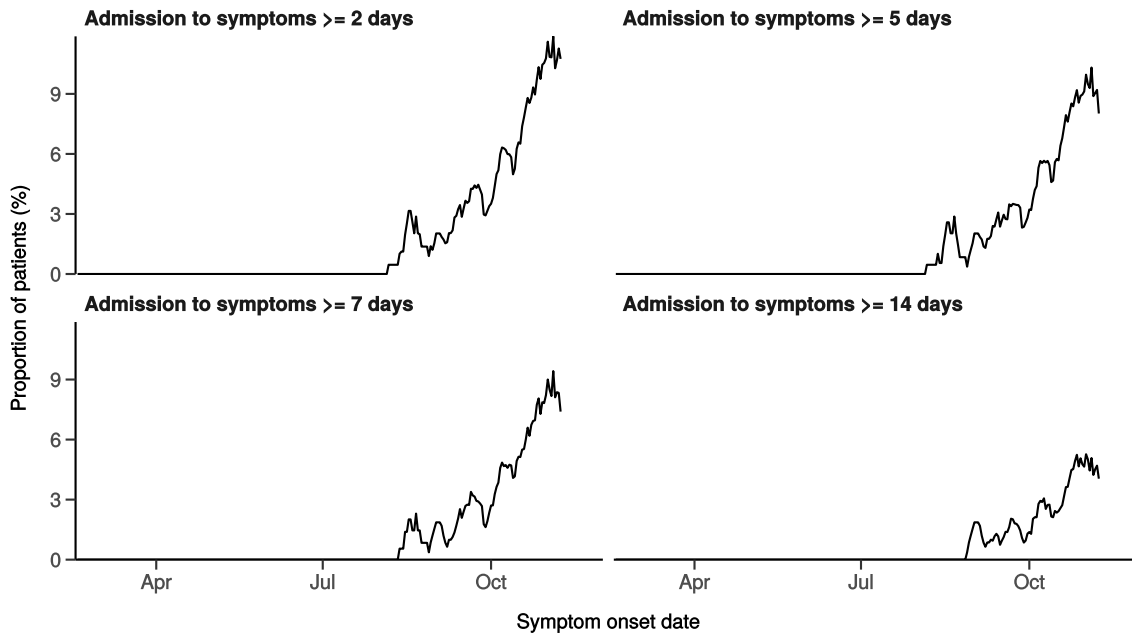
Number with symptom onset occurring after admission to hospital

Figure 1C



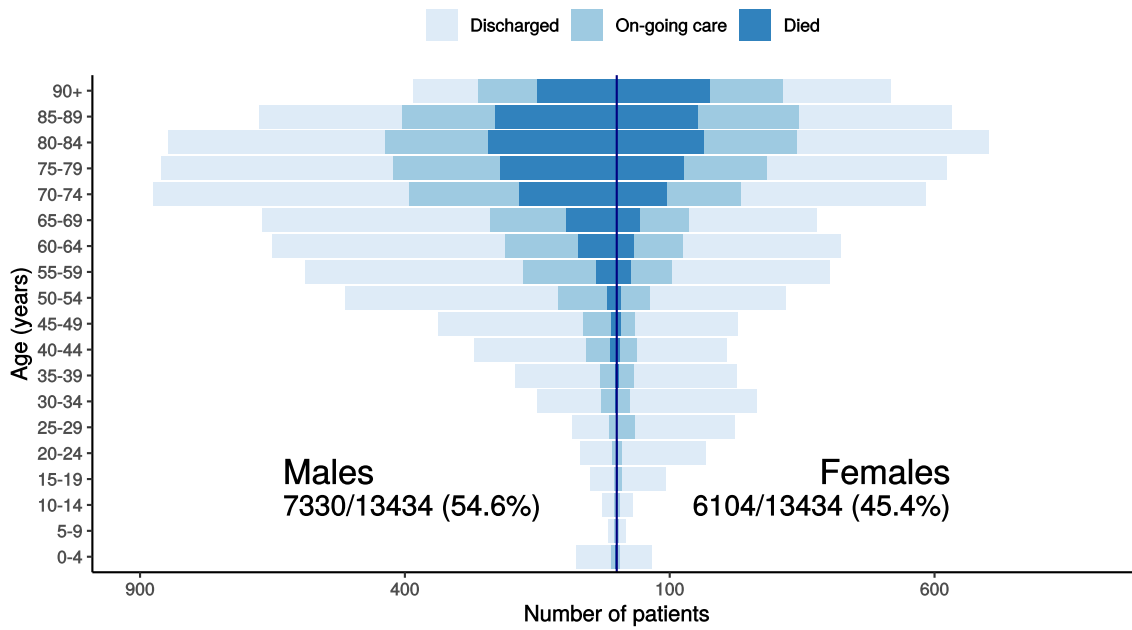
Proportion with symptom onset occurring after hospital admission

Figure 1D - 7-day rolling percentage. n = 11763



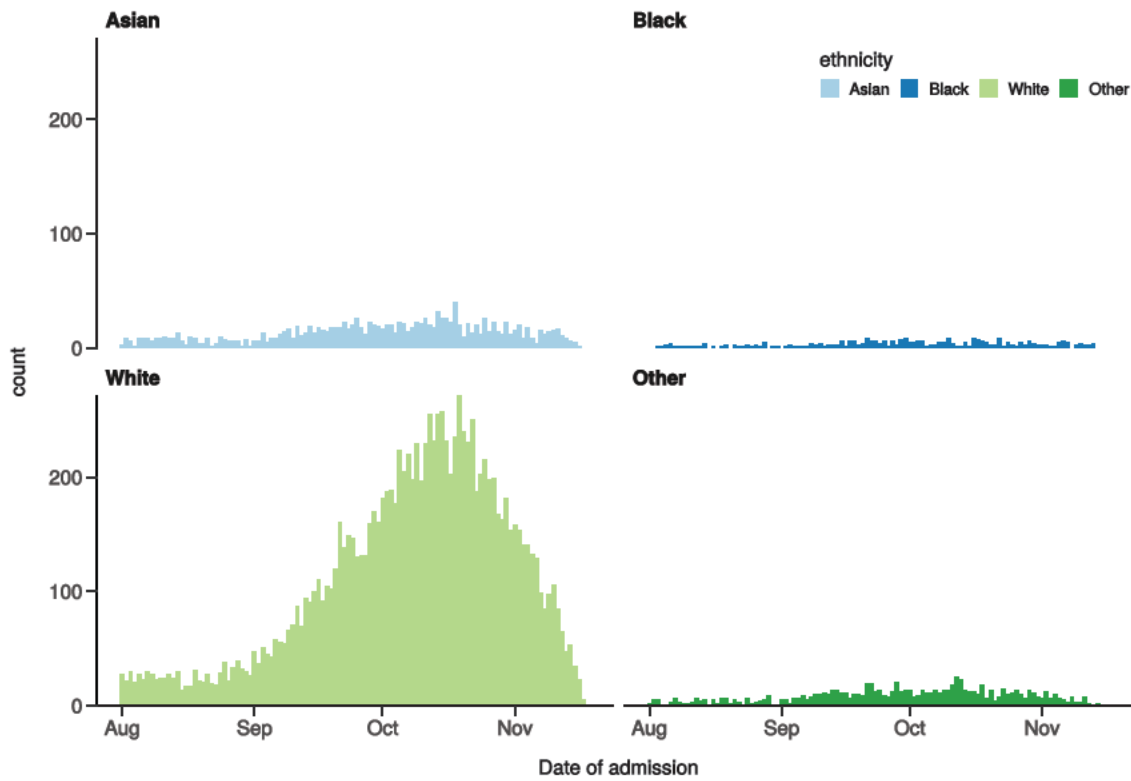
Patients with outcome stratified by age, and sex

Figure 1E



Hospital admission with COVID-19 by ethnicity

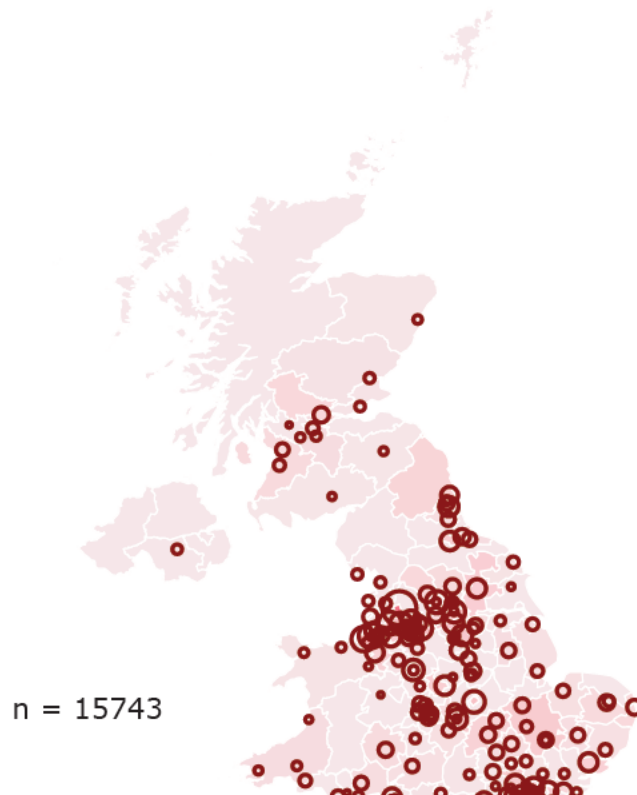
Figure 1F

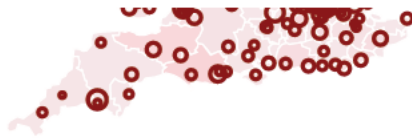


Location by CCG / Healthboard

Figure 2

Click and drag on map to zoom into area. Reset via toolbar at top of map.





Symptoms and comorbidity

Figure 3A

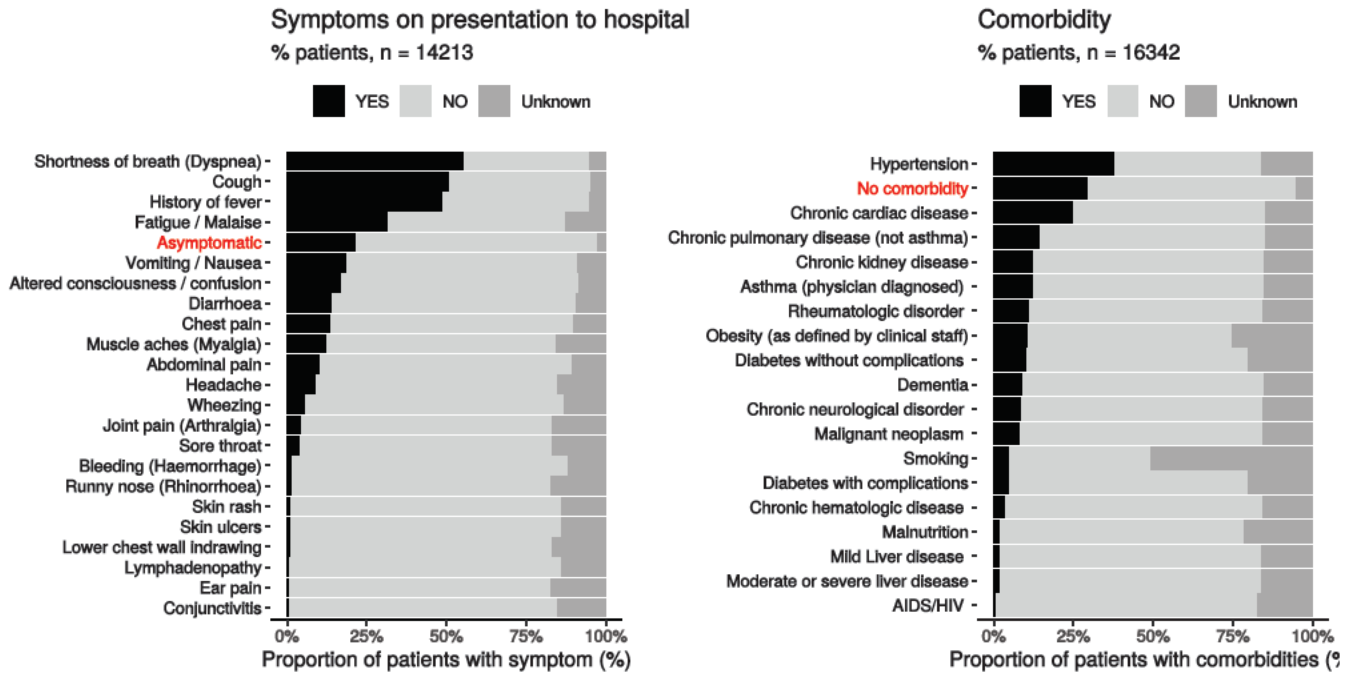


Figure 3B - Symptoms by Age

Symptoms on presentation to hospital
Stratified by age

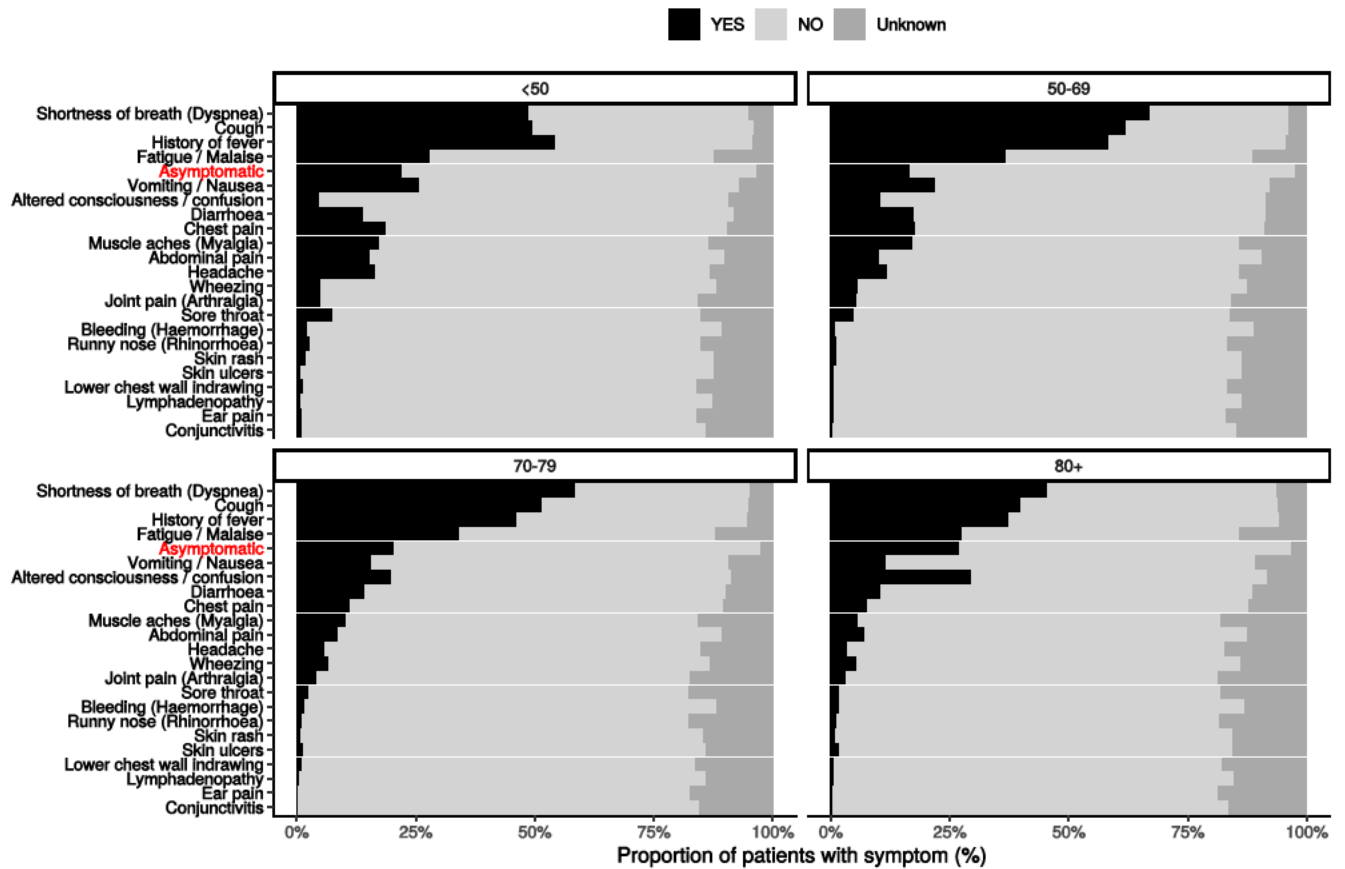
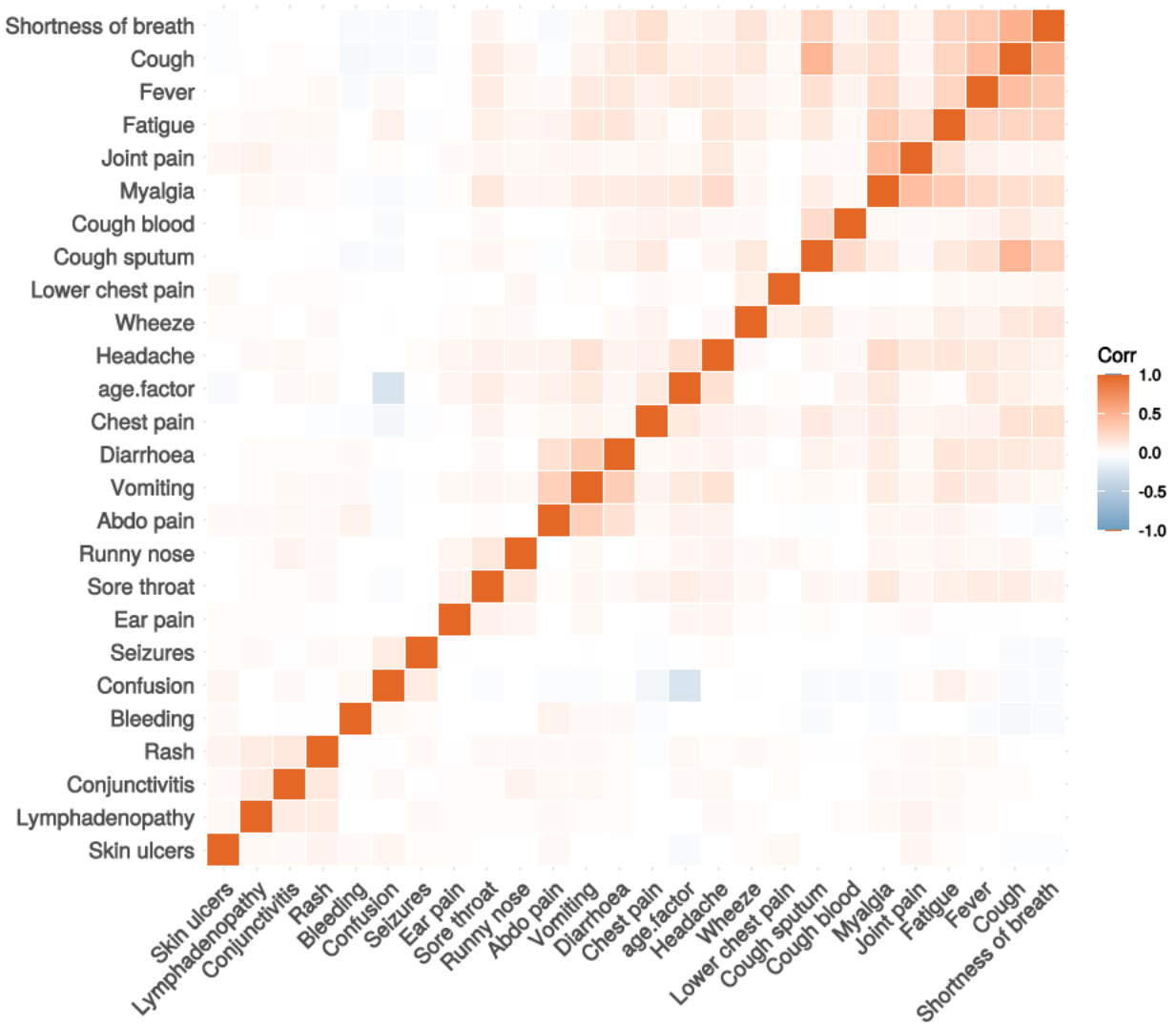


Figure 3C

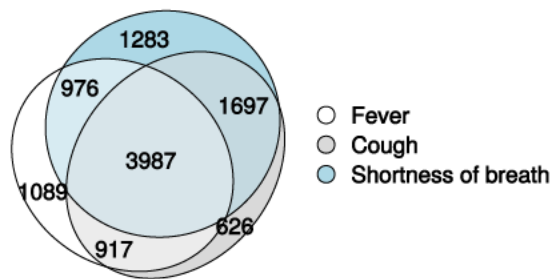
Correlation of symptoms in all pages. Note clusters, top right to bottom left, flu-like, coryzal, abdominal, respiratory, neurocutaneous.



Symptoms (diagnostic criteria)

Figure 4A

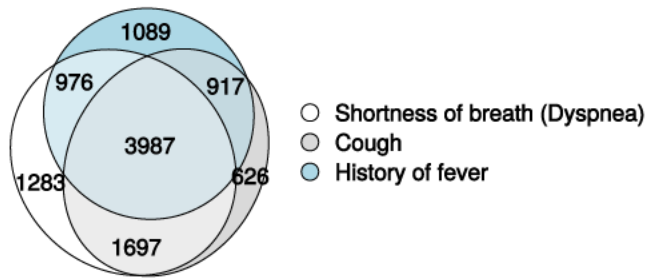
n = 14213



Symptoms (most common)

Figure 4B

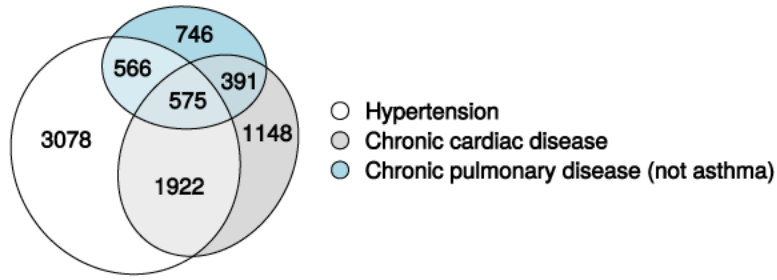
n = 14213



Comorbidity (most common)

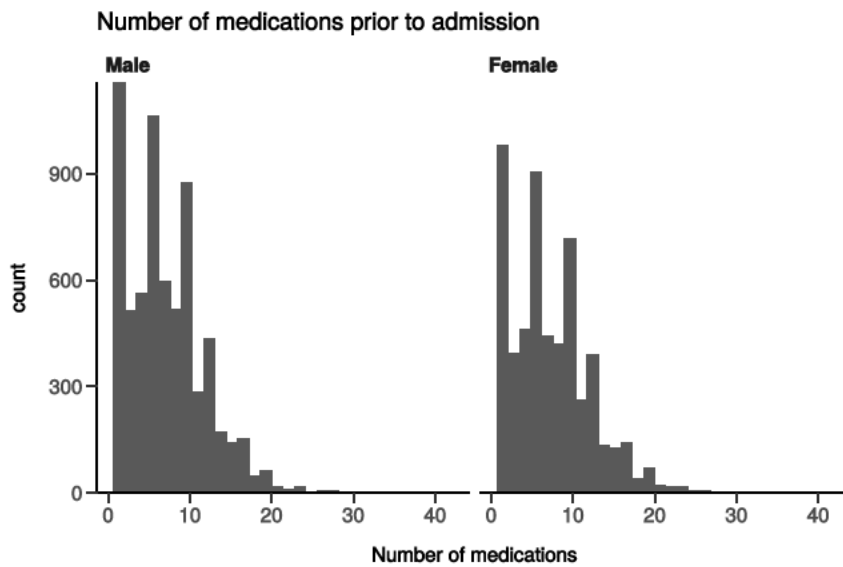
Figure 4C

n = 16342



Medication prior to illness

Figure 5

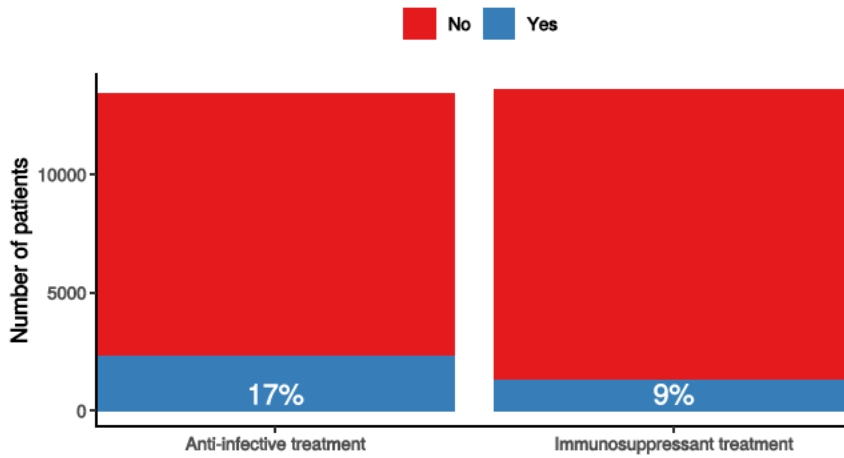


Preadmission treatment

Figure 6

Pre-admission treatment

Anti-infectives for illness episode (left) immunosuppressants including oral (not



Patient flow

Figure 7A - All patients

N = 14573

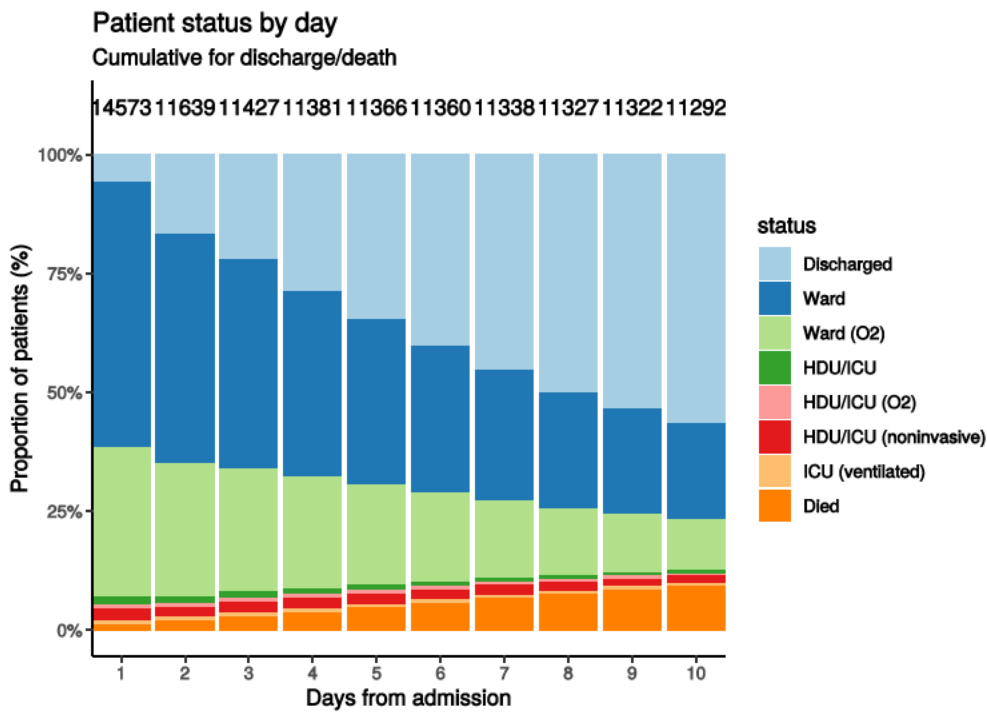
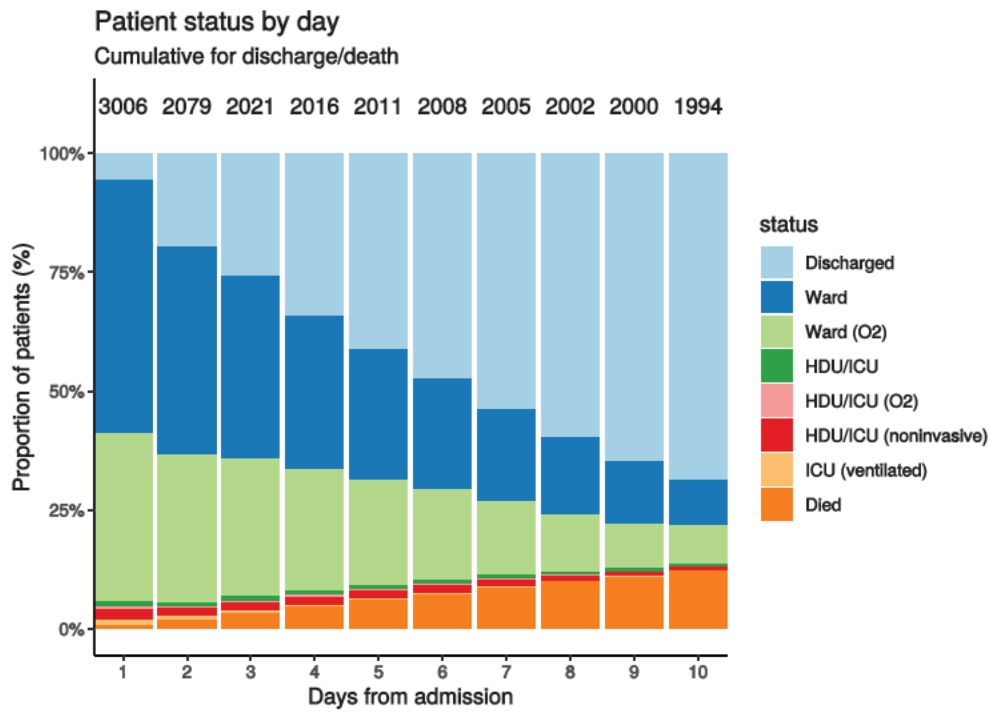


Figure 7B - Patients admitted ≥ 14 days and ≤ 28 days ago

N = 3006



Oxygen requirement

Figure 8A - All patients

N = 13877

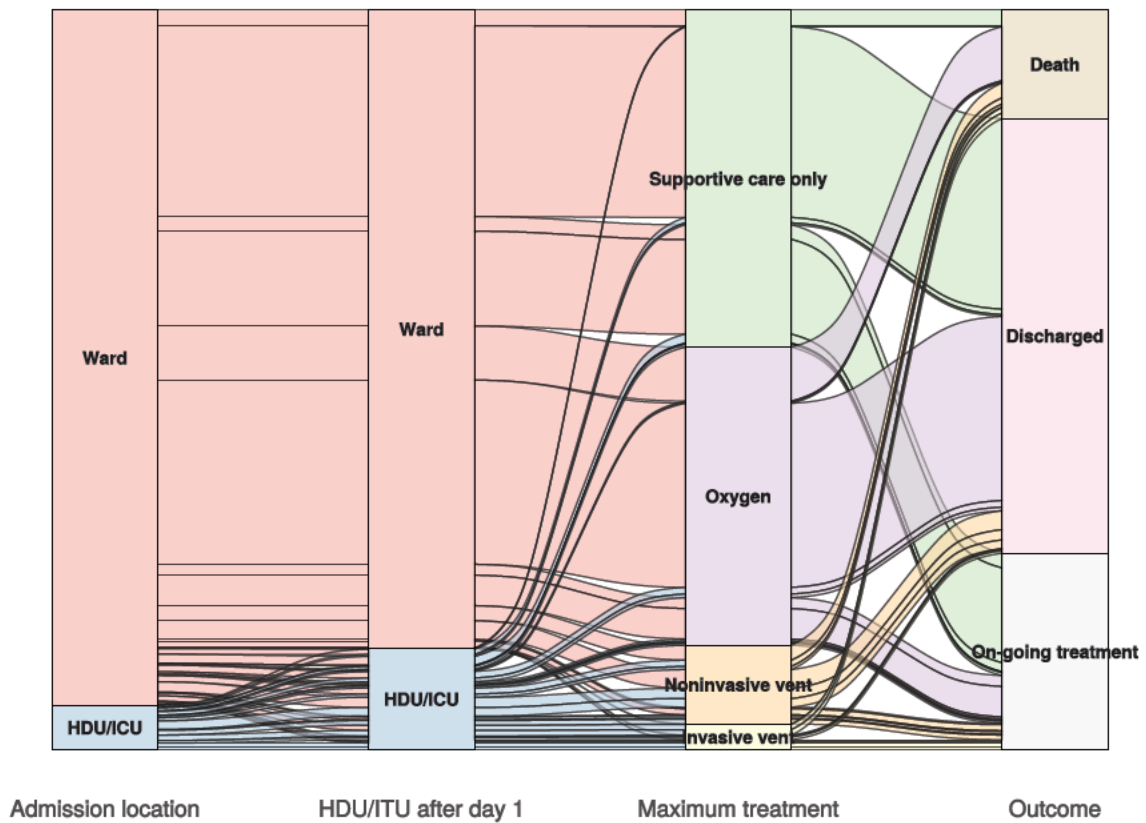


Figure 8B - Patients admitted ≥ 14 days and ≤ 28 days ago

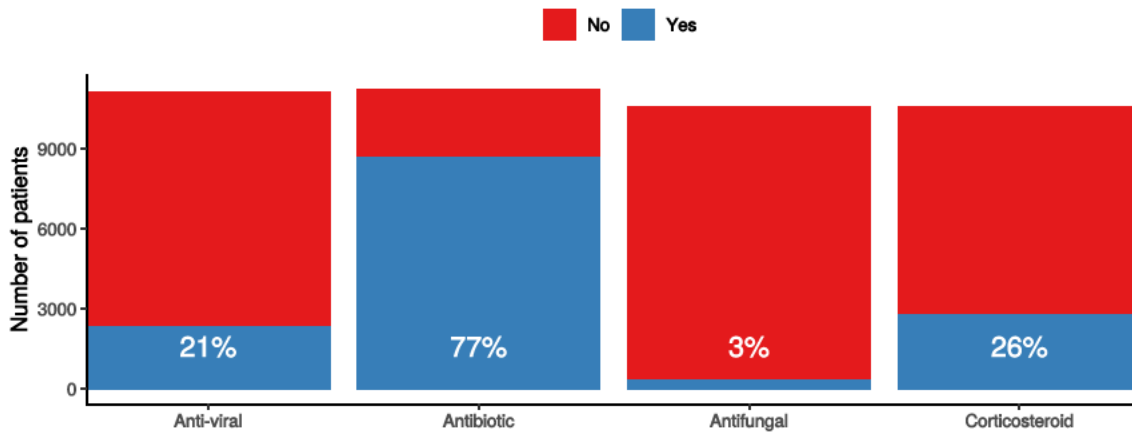
N = 2873

In-hospital medical treatment

Figure 9

In-hospital treatment

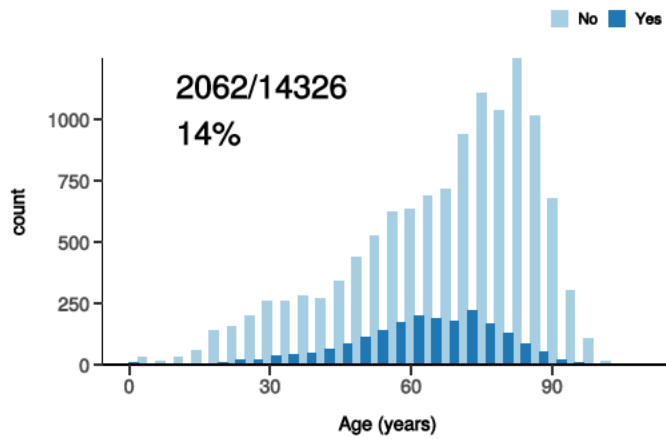
Anti-virals, antibiotics, corticosteroids, and anti-fungals for patients who have completed journey.



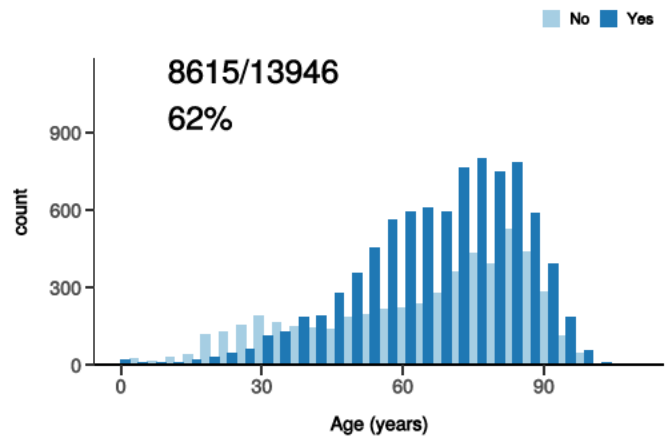
Treatment

Figure 10

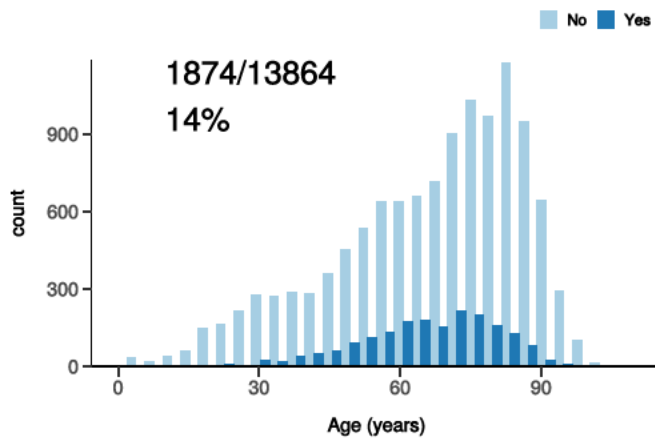
ICU/HDU admission
Figure 10A



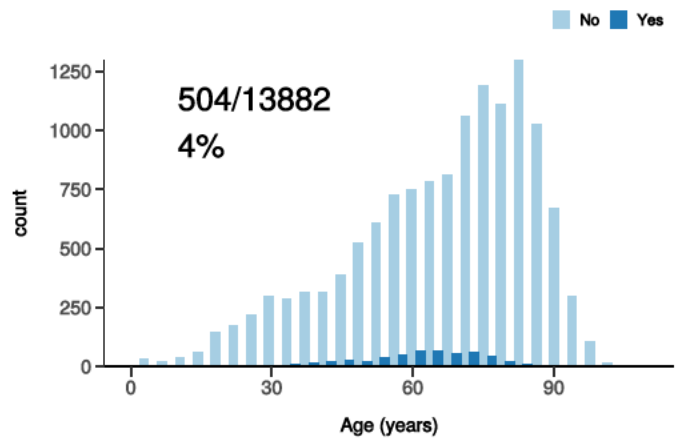
High flow oxygen
Figure 10B



Noninvasive ventilation
Figure 10C



Invasive ventilation
Figure 10D

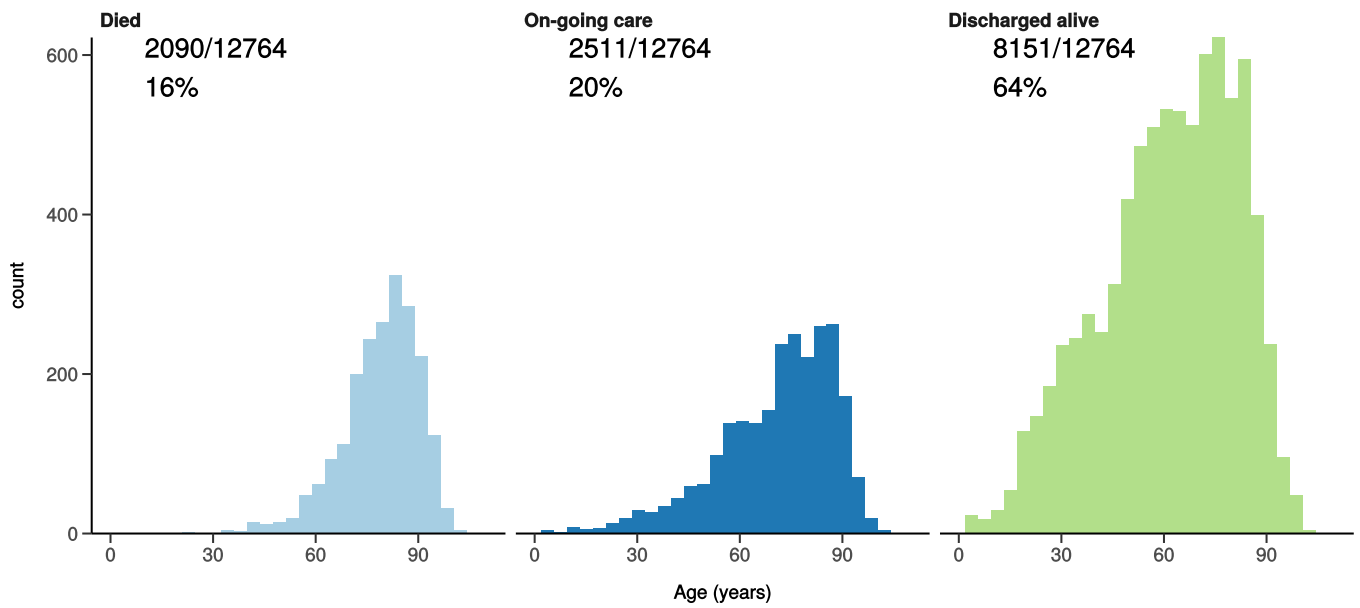


Status in patients admitted ≥ 14 days from today

Figure 11

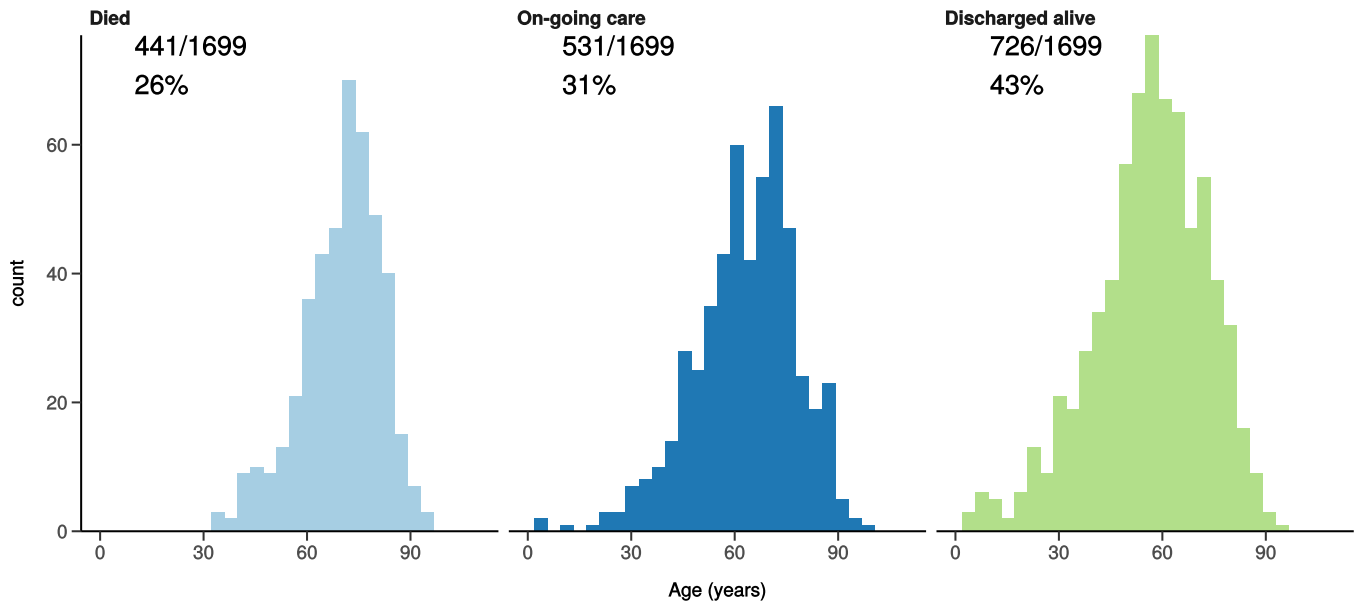
All: status in patients admitted ≥ 14 days ago

Figure 11A



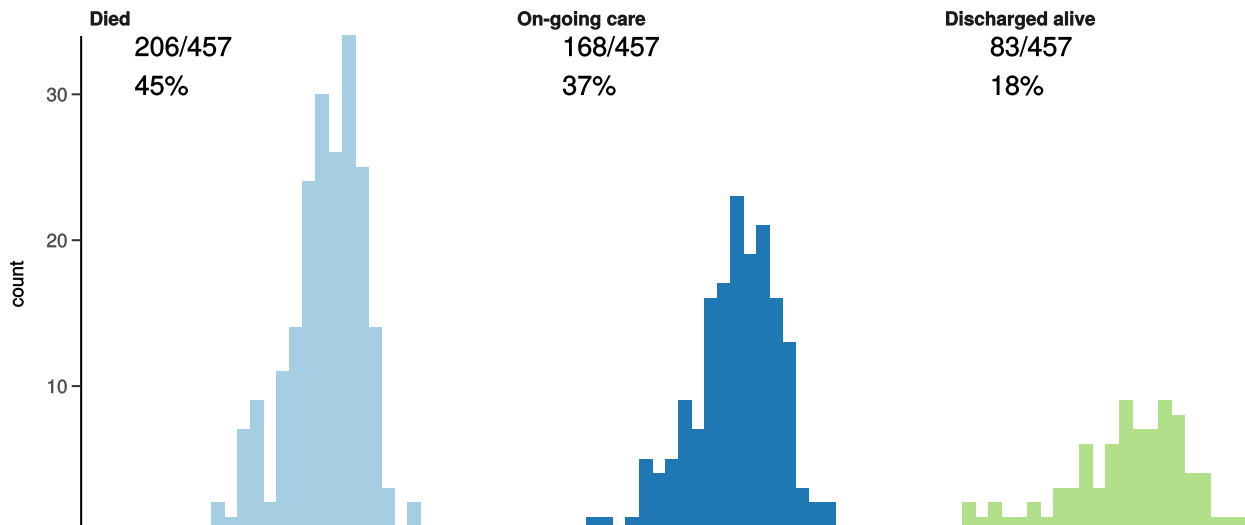
ICU/HDU admissions: status in patients admitted ≥ 14 days ago

Figure 11B



Invasive ventilation: status in patients admitted ≥ 14 days ago

Figure 11c

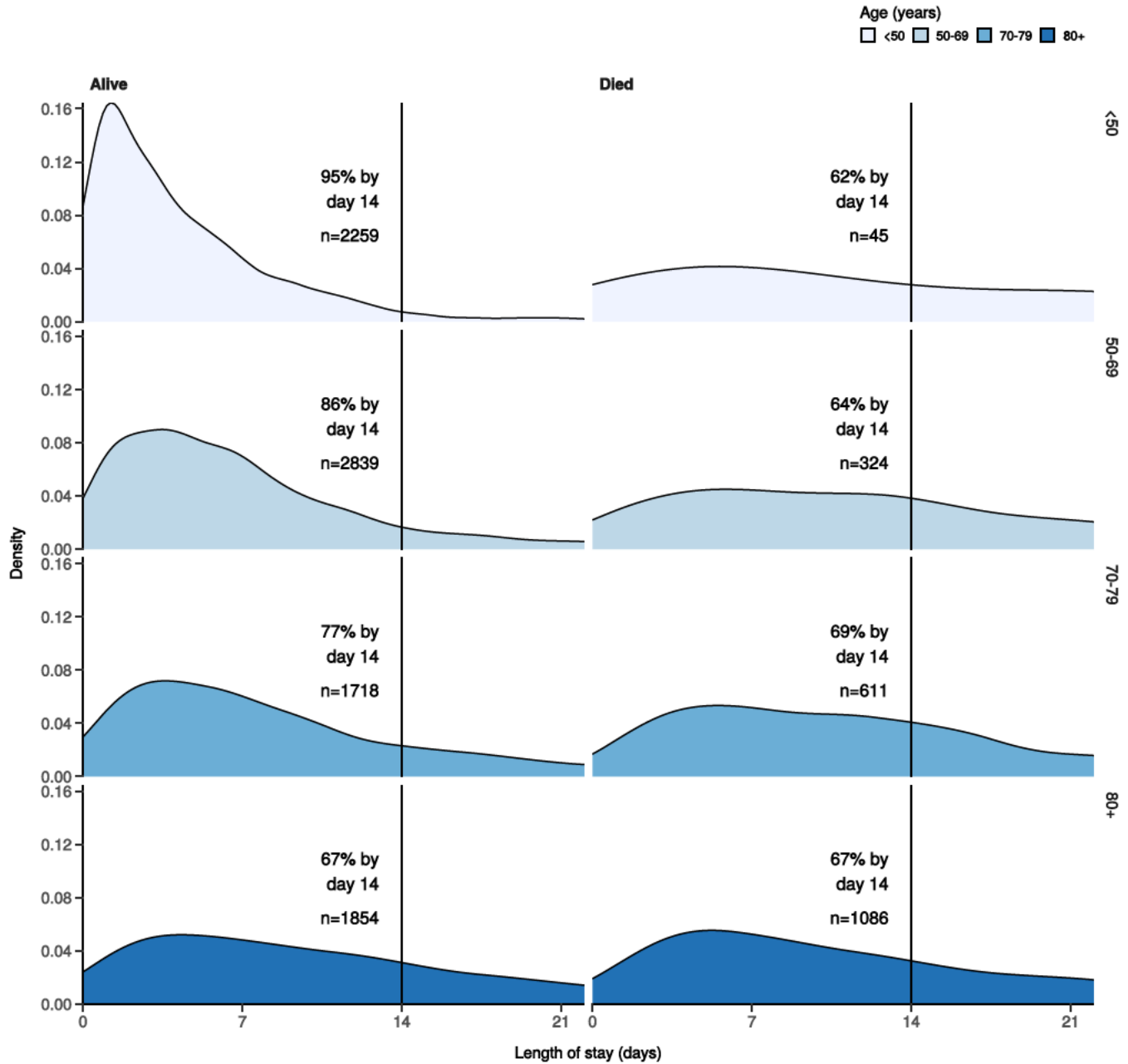




Length of stay stratified by age

Figure 12

Length of stay stratified by age and mortality
Proportion who reach outcome by day 14 shown



Predictors of death: logistic regression multivariable model

Logistic regression model only includes patients admitted >14 days ago from today.

| Dependent: death | | No | Yes | OR (univariable) | OR (multivariable) |
|--------------------------|-----|----------------|----------|------------------|--------------------|
| Age on admission (years) | <50 | 2371 (98.0) | 48 (2.0) | • | • |

| Dependent: death | | No | Yes | OR (univariable) | OR (multivariable) |
|--|---------------|----------------|----------------|------------------------------|------------------------------|
| | 50-69 | 2896 (89.7) | 331 (10.3) | 5.65 (4.19-7.77, p<0.001) | 4.69 (3.36-6.75, p<0.001) |
| | 70-79 | 1764 (74.2) | 613 (25.8) | 17.17 (12.86-23.47, p<0.001) | 12.09 (8.68-17.34, p<0.001) |
| | 80+ | 1914 (63.7) | 1091 (36.3) | 28.16 (21.20-38.32, p<0.001) | 19.23 (13.81-27.55, p<0.001) |
| Sex at Birth | Male | 4739 (79.1) | 1255 (20.9) | • | • |
| | Female | 4209 (83.6) | 828 (16.4) | 0.74 (0.67-0.82, p<0.001) | 0.70 (0.62-0.79, p<0.001) |
| | Not specified | 0 (NaN) | 0 (NaN) | • | • |
| Chronic cardiac disease | NO | 6421 (86.3) | 1017 (13.7) | • | • |
| | YES | 2016 (68.5) | 926 (31.5) | 2.90 (2.62-3.21, p<0.001) | 1.34 (1.18-1.52, p<0.001) |
| Chronic pulmonary disease (not asthma) | NO | 7319 (83.7) | 1423 (16.3) | • | • |
| | YES | 1118 (67.9) | 528 (32.1) | 2.43 (2.16-2.73, p<0.001) | 1.57 (1.36-1.80, p<0.001) |
| Chronic neurological disorder | NO | 7698 (82.2) | 1667 (17.8) | • | • |
| | YES | 704 (73.3) | 257 (26.7) | 1.69 (1.45-1.96, p<0.001) | 1.13 (0.94-1.36, p=0.195) |
| Chronic hematologic disease | NO | 8109 (81.8) | 1803 (18.2) | • | • |
| | YES | 282 (70.1) | 120 (29.9) | 1.91 (1.53-2.38, p<0.001) | 1.44 (1.10-1.88, p=0.008) |
| Chronic kidney disease | NO | 7479 (84.0) | 1425 (16.0) | • | • |
| | YES | 946 (65.2) | 506 (34.8) | 2.81 (2.48-3.17, p<0.001) | 1.50 (1.29-1.74, p<0.001) |
| Dementia | NO | 7804 (83.4) | 1558 (16.6) | • | • |
| | YES | 615 (63.5) | 353 (36.5) | 2.88 (2.49-3.31, p<0.001) | 1.39 (1.17-1.66, p<0.001) |
| Obesity (as defined by clinical staff) | NO | 6343 (81.1) | 1482 (18.9) | • | • |
| | YES | 1112 (84.7) | 201 (15.3) | 0.77 (0.66-0.91, p=0.002) | 1.08 (0.90-1.31, p=0.402) |
| Malignant neoplasm | NO | 7790 (82.8) | 1617 (17.2) | • | • |
| | YES | 611 (66.3) | 310 (33.7) | 2.44 (2.11-2.83, p<0.001) | 1.59 (1.33-1.91, p<0.001) |

Number in dataframe = 14994, Number in model = 8771, Missing = 6223, AIC = 6899.2, C-statistic = 0.781, H&L = Chi-sq(8) 21.98 (p=0.005)

Figure 13 - Adjusted odds ratio plot

Death

| | | |
|--|---------------|------------------------------|
| Age on admission (years) | <50 | - |
| | 50-69 | 4.69 (3.36-6.75, p<0.001) |
| | 70-79 | 12.09 (8.68-17.34, p<0.001) |
| | 80+ | 19.23 (13.81-27.55, p<0.001) |
| Sex at Birth | Male | - |
| | Female | 0.70 (0.62-0.79, p<0.001) |
| | Not specified | - |
| Chronic cardiac disease | YES | 1.34 (1.18-1.52, p<0.001) |
| Chronic pulmonary disease (not asthma) | YES | 1.57 (1.36-1.80, p<0.001) |
| Chronic neurological disorder | YES | 1.13 (0.94-1.36, p=0.195) |
| Chronic hematologic disease | YES | 1.44 (1.10-1.88, p=0.008) |
| Chronic kidney disease | YES | 1.50 (1.29-1.74, p<0.001) |
| Dementia | YES | 1.39 (1.17-1.66, p<0.001) |
| Obesity (as defined by clinical staff) | YES | 1.08 (0.90-1.31, p=0.402) |
| Malignant neoplasm | YES | 1.59 (1.33-1.91, p<0.001) |

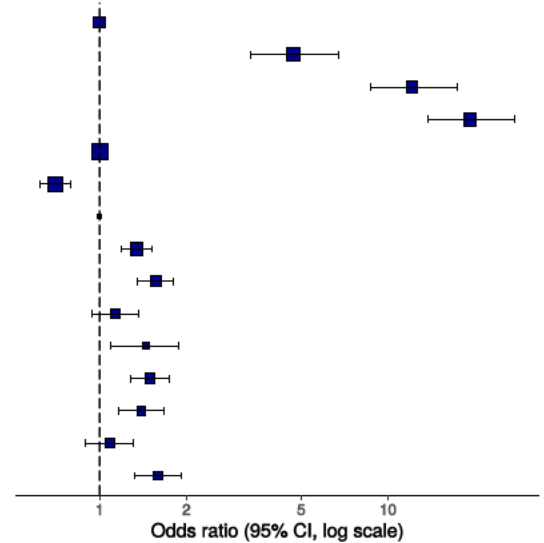
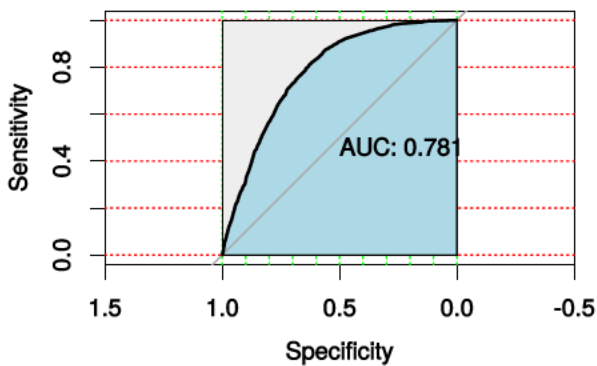


Figure 14 - ROC

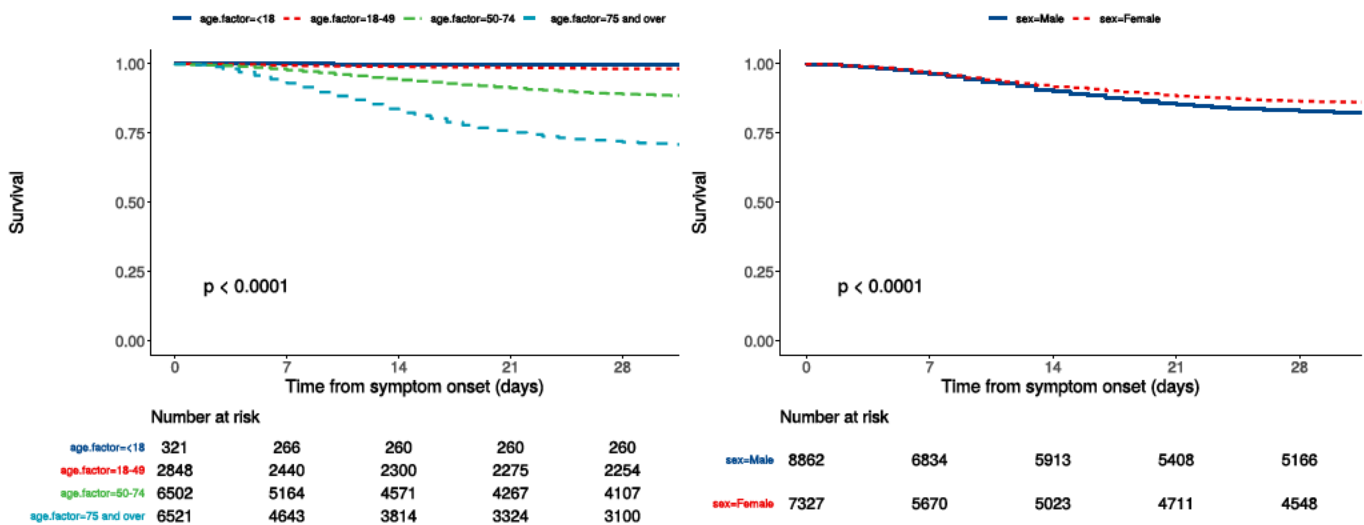


Survival models

Kaplan-Meier plots for survival from symptom onset stratified by age (left) and sex (right)

Figure 15

P-value is log-rank test.



Cox proportional hazards model

The methodology for this is now up and running, but models are still being explored. **What is presented here is not a final model, but to demonstrate methodology.** The results are correct, but important variables have not yet been included.

Time from symptom onset.

| Dependent: Surv(time, status) | | all | HR (univariable) | HR (multivariable) |
|--|-------------|--------------|------------------------------|------------------------------|
| Age on admission (years) | <50 | 3169 (19.6) | • | • |
| | 50-69 | 4730 (29.2) | 5.38 (3.97-7.30, p<0.001) | 4.50 (3.10-6.52, p<0.001) |
| | 70-79 | 3630 (22.4) | 14.90 (11.08-20.04, p<0.001) | 11.94 (8.31-17.16, p<0.001) |
| | 80+ | 4667 (28.8) | 22.93 (17.12-30.70, p<0.001) | 18.02 (12.54-25.89, p<0.001) |
| Sex at Birth | Male | 8862 (54.7) | • | • |
| | Female | 7327 (45.3) | 0.77 (0.71-0.84, p<0.001) | 0.77 (0.69-0.85, p<0.001) |
| qSOFA score on admission | 0 | 6337 (51.0) | • | • |
| | 1 | 5250 (42.3) | 1.86 (1.68-2.06, p<0.001) | 1.97 (1.75-2.21, p<0.001) |
| | 2 | 796 (6.4) | 4.55 (3.95-5.25, p<0.001) | 3.76 (3.19-4.42, p<0.001) |
| | 3 | 42 (0.3) | 8.12 (5.14-12.82, p<0.001) | 7.64 (4.63-12.62, p<0.001) |
| Symptomatic at presentation | No symptoms | 1840 (12.8) | • | • |
| | Symptoms | 12553 (87.2) | 1.51 (1.30-1.76, p<0.001) | • |
| Chronic cardiac disease | NO | 9817 (71.0) | • | • |
| | YES | 4010 (29.0) | 2.56 (2.35-2.80, p<0.001) | 1.32 (1.19-1.48, p<0.001) |
| Chronic kidney disease | NO | 11814 (85.7) | • | • |
| | YES | 1969 (14.3) | 2.49 (2.25-2.75, p<0.001) | 1.44 (1.27-1.63, p<0.001) |
| Moderate or severe liver disease | NO | 13429 (98.1) | • | • |
| | YES | 256 (1.9) | 1.76 (1.35-2.28, p<0.001) | 1.49 (1.05-2.11, p=0.024) |
| Chronic neurological disorder | NO | 12405 (90.3) | • | • |
| | YES | 1326 (9.7) | 1.53 (1.34-1.74, p<0.001) | • |
| Malignant neoplasm | NO | 12471 (90.8) | • | • |
| | YES | 1263 (9.2) | 2.13 (1.89-2.41, p<0.001) | 1.61 (1.40-1.86, p<0.001) |
| Chronic hematologic disease | NO | 13185 (96.2) | • | • |
| | YES | 519 (3.8) | 1.76 (1.46-2.10, p<0.001) | • |
| Obesity (as defined by clinical staff) | NO | 10462 (85.9) | • | • |
| | YES | 1720 (14.1) | 0.79 (0.68-0.91, p=0.001) | 1.03 (0.87-1.22, p=0.744) |

| Dependent: Surv(time, status) | | all | HR (univariable) | HR (multivariable) |
|--------------------------------|-----|--------------|---------------------------|---------------------------|
| Diabetes without complications | NO | 11399 (87.7) | • | • |
| | YES | 1600 (12.3) | 1.24 (1.09-1.41, p=0.001) | • |
| Rheumatologic disorder | NO | 11988 (87.4) | • | • |
| | YES | 1729 (12.6) | 1.35 (1.20-1.52, p<0.001) | • |
| Dementia | NO | 12376 (89.9) | • | • |
| | YES | 1383 (10.1) | 2.43 (2.17-2.73, p<0.001) | 1.12 (0.97-1.30, p=0.133) |
| Malnutrition | NO | 12502 (98.0) | • | • |
| | YES | 258 (2.0) | 2.00 (1.56-2.56, p<0.001) | • |
| smoking_mhyn_2levels | NO | 7201 (50.6) | • | • |
| | YES | 759 (5.3) | 0.93 (0.75-1.15, p=0.514) | • |
| | N/K | 6274 (44.1) | 1.27 (1.16-1.39, p<0.001) | • |

Number in dataframe = 16230, Number in model = 10125, Missing = 6105, Number of events = 1435, Concordance = 0.785 (SE = 0.005), R-squared = 0.140 (Max possible = 0.921), Likelihood ratio test = 1522.814 (df = 13, p = 0.000)

Figure 16a - Multivariable Cox proportional hazards model

Survival: HR (95% CI, p-value)

| | | |
|--|--------|------------------------------|
| Age on admission (years) | <50 | - |
| | 50-69 | 4.50 (3.10-6.52, p<0.001) |
| | 70-79 | 11.94 (8.31-17.16, p<0.001) |
| | 80+ | 18.02 (12.54-25.89, p<0.001) |
| Sex at Birth | Female | 0.77 (0.69-0.85, p<0.001) |
| qSOFA score on admission | 0 | - |
| | 1 | 1.97 (1.75-2.21, p<0.001) |
| | 2 | 3.76 (3.19-4.42, p<0.001) |
| | 3 | 7.64 (4.63-12.62, p<0.001) |
| Chronic cardiac disease | YES | 1.32 (1.19-1.48, p<0.001) |
| Chronic kidney disease | YES | 1.44 (1.27-1.63, p<0.001) |
| Moderate or severe liver disease | YES | 1.49 (1.05-2.11, p=0.024) |
| Malignant neoplasm | YES | 1.61 (1.40-1.86, p<0.001) |
| Obesity (as defined by clinical staff) | YES | 1.03 (0.87-1.22, p=0.744) |
| Dementia | YES | 1.12 (0.97-1.30, p=0.133) |

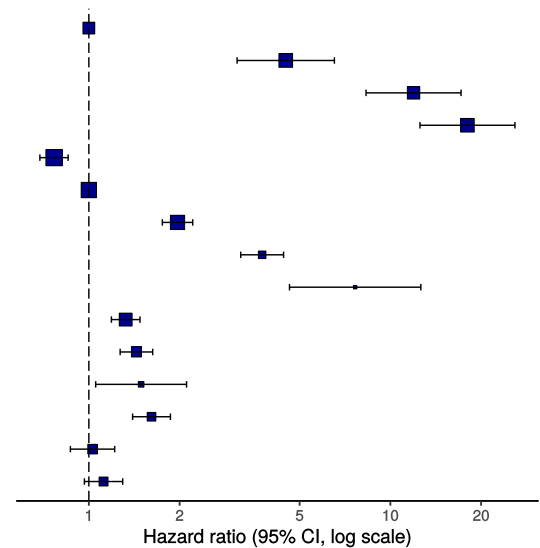
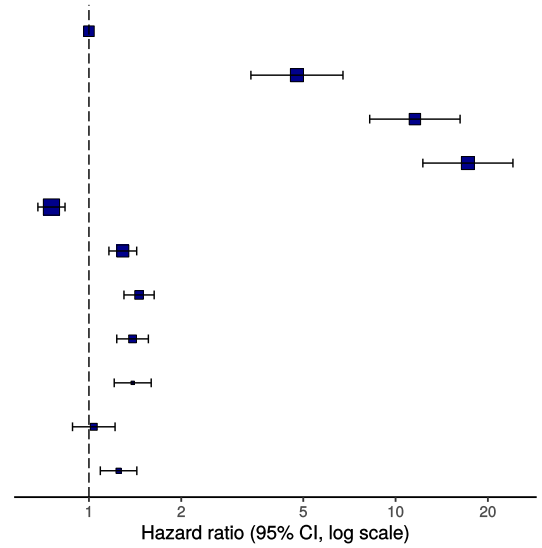


Figure 16b - Multivariable Cox proportional hazards model (age, sex, comorbidities only)

Survival: HR (95% CI, p-value)

| | | |
|--|--------|------------------------------|
| Age on admission (years) | <50 | - |
| | 50-69 | 4.77 (3.37-6.74, p<0.001) |
| | 70-79 | 11.56 (8.23-16.23, p<0.001) |
| | 80+ | 17.21 (12.27-24.14, p<0.001) |
| Sex at Birth | Female | 0.75 (0.68-0.84, p<0.001) |
| Chronic cardiac disease | YES | 1.29 (1.16-1.43, p<0.001) |
| Chronic pulmonary disease (not asthma) | YES | 1.46 (1.30-1.63, p<0.001) |
| Chronic kidney disease | YES | 1.39 (1.23-1.56, p<0.001) |
| Malignant neoplasm | YES | 1.39 (1.21-1.60, p<0.001) |
| Obesity (as defined by clinical staff) | YES | 1.04 (0.88-1.22, p=0.655) |
| Dementia | YES | 1.25 (1.09-1.43, p=0.001) |



ROC = 0.7871872

Figure 17 - Predictions calibration plot

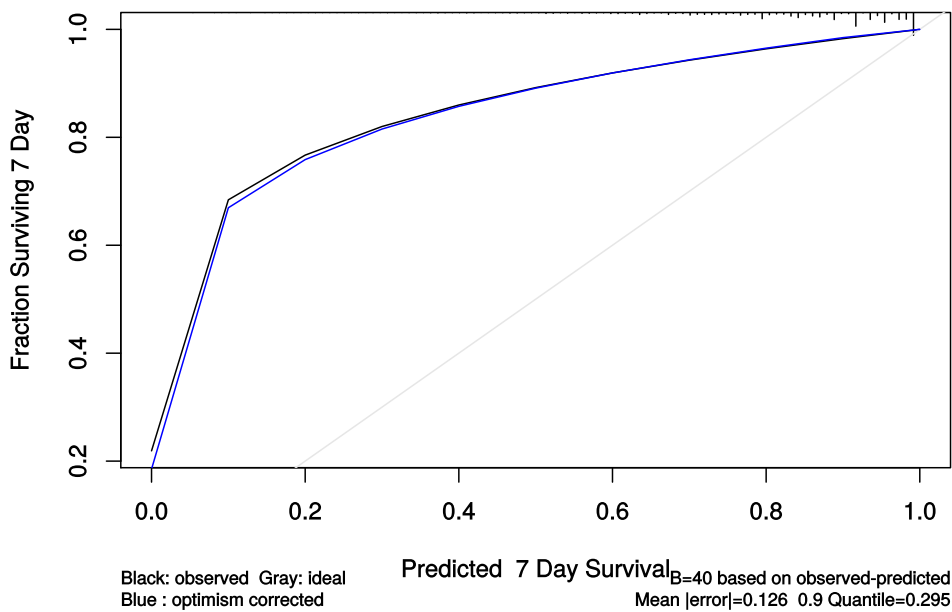


Figure 18 - Prognostic model predictions

Again, for demonstration of methods.

Prognostic model for survival 7 days after onset
qSOFA score on admission

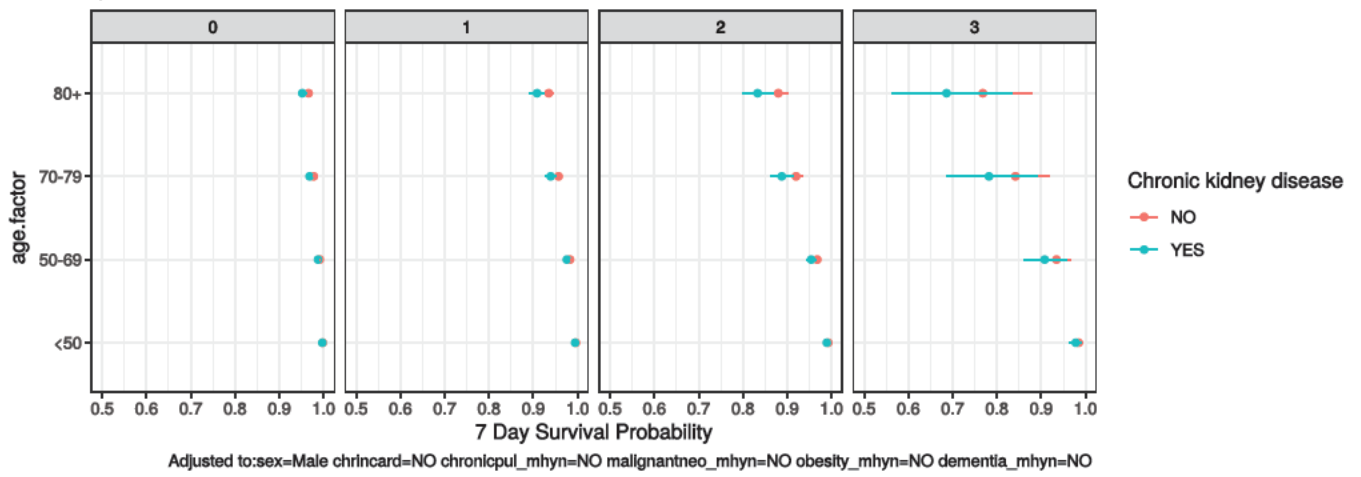


Figure 19 - Death by severity (NEWS) on admission

Number of deaths by NEWS score at admission

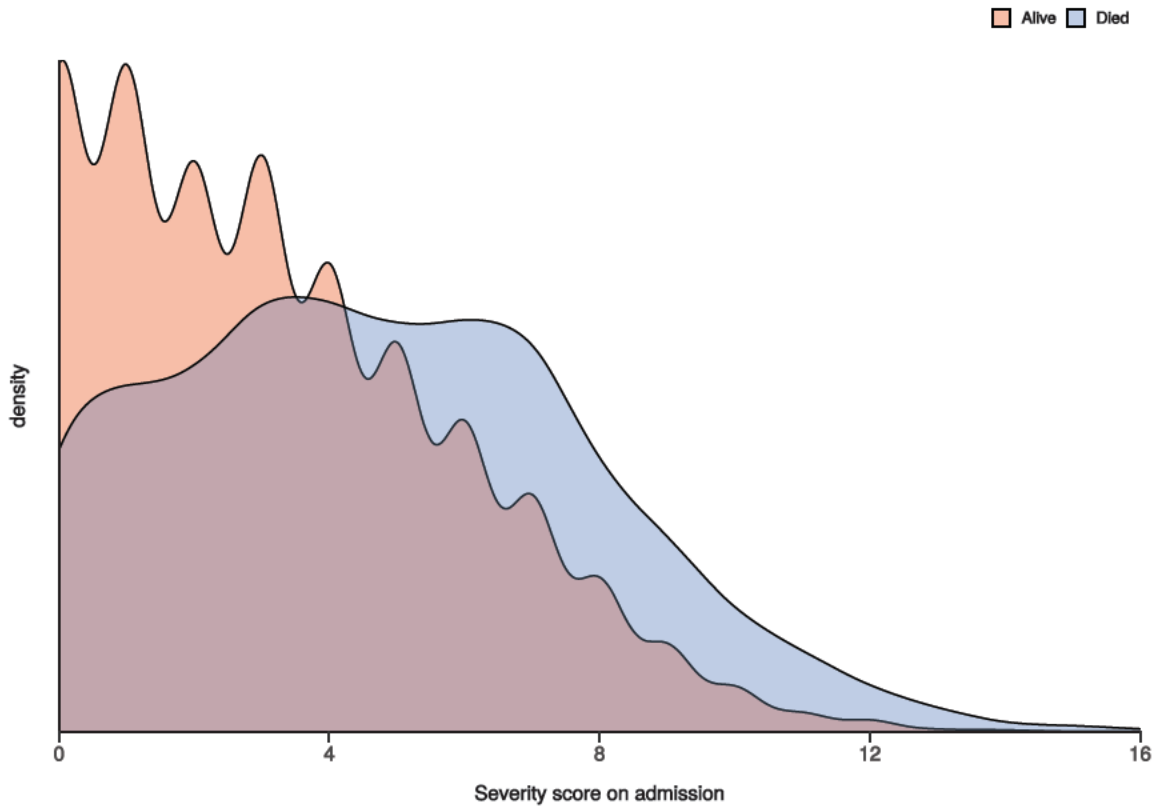


Figure 20 - Death by severity (NEWS) on admission stratified by age

Number of deaths by NEWS score at admission
Stratified by age

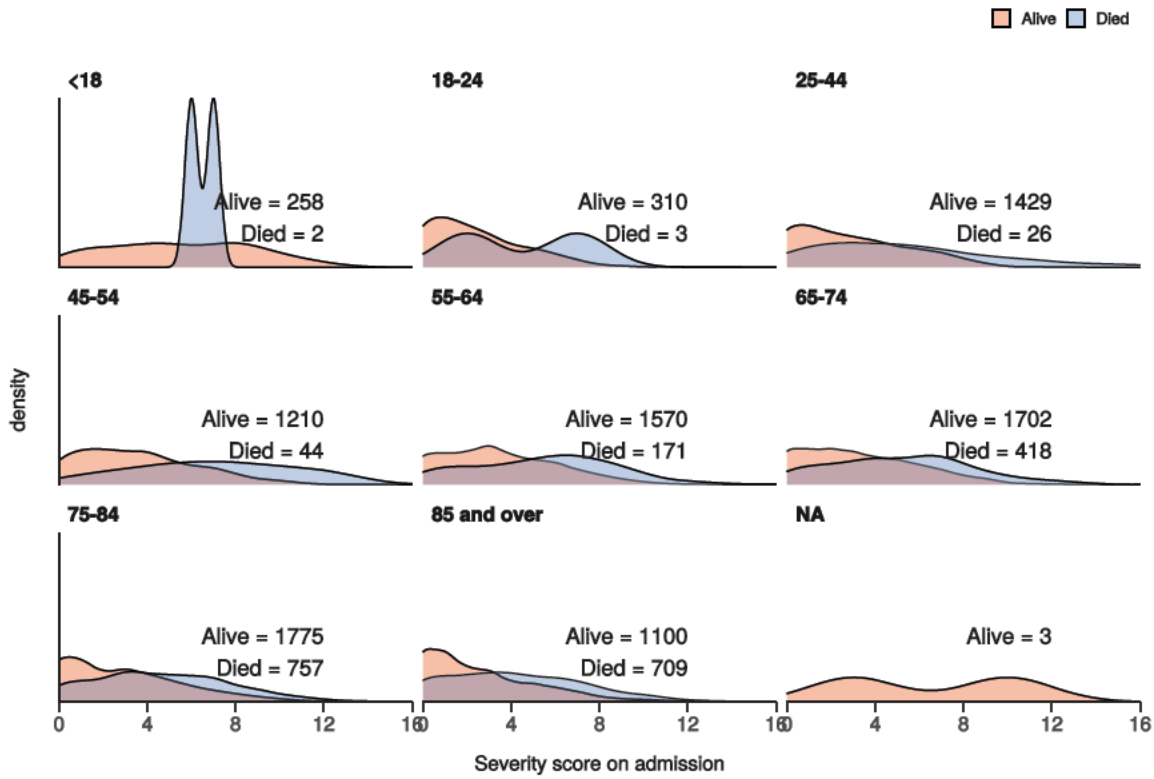
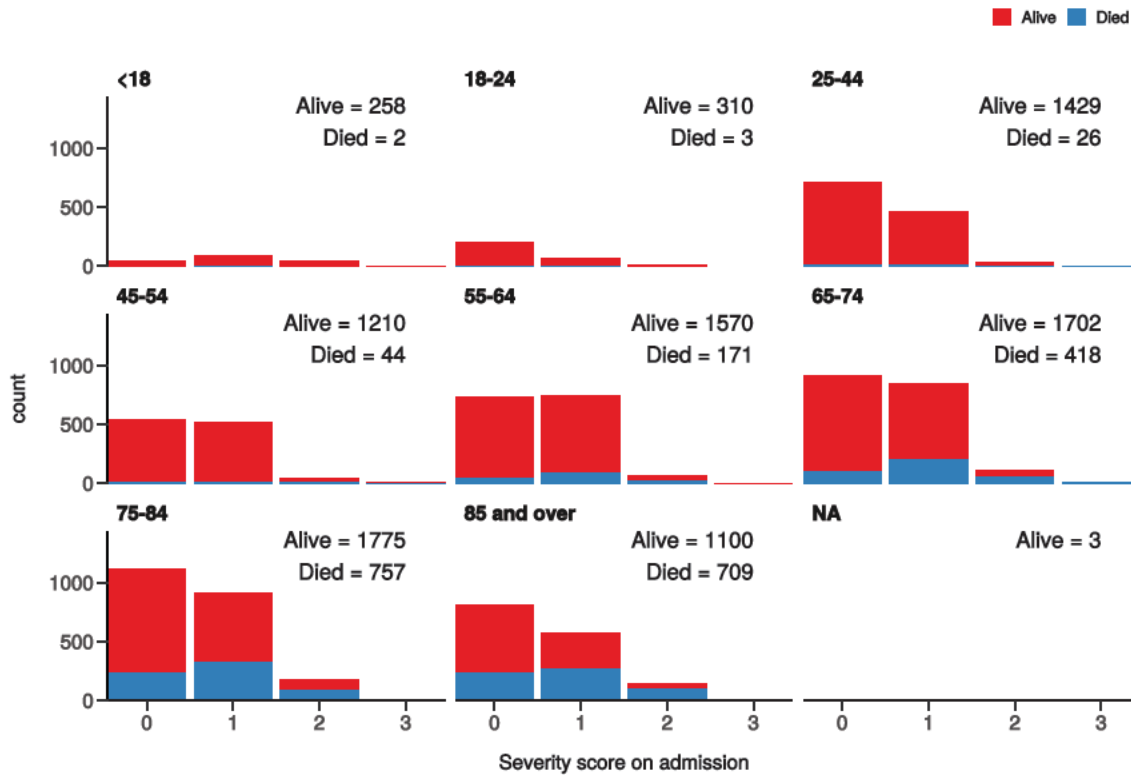


Figure 21 - Death by severity (qSOFA) on admission stratified by age

Number of deaths by qSOFA score at admission
Stratified by age



Healthcare workers

Employed as a healthcare worker?

NO

YES

p

| Employed as a healthcare worker? | | NO | YES | p |
|---|--------------|--------------|------------|----------|
| Total N (%) | | 13331 (97.6) | 331 (2.4) | |
| NEWS score on admission | Median (IQR) | 3.0 (4.0) | 3.0 (4.0) | 0.549 |
| Death | No | 7629 (79.5) | 248 (96.9) | <0.001 |
| | Yes | 1965 (20.5) | 8 (3.1) | |