



Department  
of Health &  
Social Care



easy  
read

# New rules for staff moving between different care settings

What do you think?



To fill in an online version  
of the Easy Read survey  
[click here](#)

# Introduction

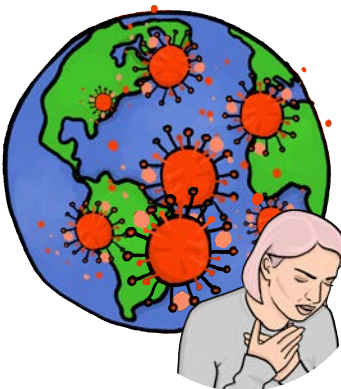


The Government wants some new rules for care staff moving between different **care settings**.



A **care setting** is a place where you receive care or support. For example:

- a hospital
- in your home or a care home.



We are suggesting these rules to help stop the spread of **COVID-19**.

**COVID-19** is a new illness that is spreading around the world. It can affect your lungs and breathing.



Before we decide on the new rules, we want to know what you think about our ideas?

Please tell us what you think by answering the questions that start on page 7.

# Why are we suggesting new rules?



Care staff often work in 2 or more places and could be spreading COVID-19 between care settings.



We have found that care settings where lots of people have caught COVID-19 are the ones with staff who also work in other places.



People who live in care settings are likely to be very ill if they catch COVID-19.

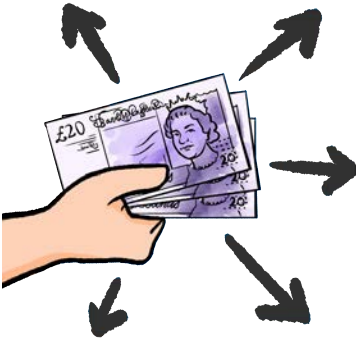


This winter, the Government wants to stop staff moving between different care settings, to keep people safe.



## Our ideas for new rules

We are suggesting new rules to stop staff moving between different care settings.



We have given money to care services to help cover the cost of stopping the virus spreading.



## Which staff?

The new rules would apply to all care staff including **temporary** or **agency** staff.



**Temporary** staff work for a short period of time.



**Agency** staff are provided by another company to work when the usual staff are off.





The new rules would not apply to:

- managers



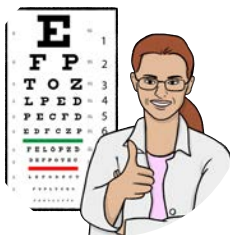
- staff that are not carers, like cleaners



- community nurses



- doctors visiting the care setting



- other visiting health workers.



People who have 2 care jobs would have to stop doing 1 of them.



## Numbers of staff

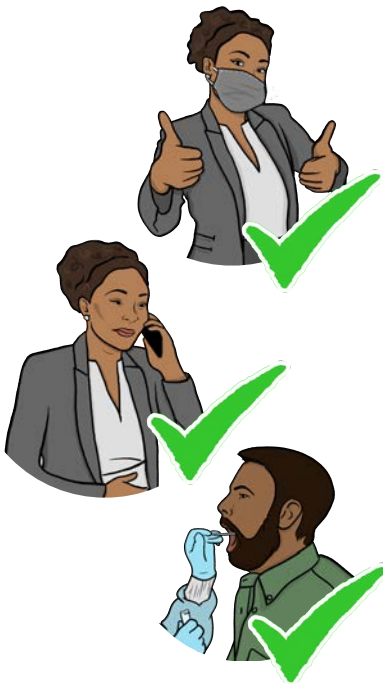
There are already rules which say how many staff have to be at work in your care setting.



The new rules may mean you can't find enough care staff to run your service safely.

If so, the manager would be allowed to use someone who is also working in another care setting, but only if:

- the manager has proper plans for staff
- they have tried other ways to get enough care staff
- the care staff have been tested to show that they do not have COVID-19.



## Guidance

We would give managers of care settings clear guidance about the new rules.

# About you



## Question 1: Are you answering for...

- ☐ An organisation that supports care businesses or care staff
- ☐ A care home. The name of the care home is:
- ☐ An adult social care service. The name of the service is:
- ☐ A healthcare service. The name of the service is:
- ☐ A local council
- ☐ Myself. I am a care worker
- ☐ Myself. I am someone who uses a care service
- ☐ Someone or something else. Their name is:



**Question 1A:** If you are answering for an organisation, what is it called?



**Question 1B:** What is your role in the organisation?



**Question 1C:** If your service is a care home, what sort is it?

- ☐ A home for people with learning disabilities and autistic people
- ☐ A home for older people and people with dementia
- ☐ Another type of care home. Please give details:

- ☐ A nursing home
- ☐ A short term or respite care service



**Question 1D:** How many beds does your organisation have?



**Question 1E:** How many workers does your organisation have?





**Question 1F:** If your service is not a care home, what sort of service is it?

☐

Day care service

☐

Helping people to live in their own homes

☐

Supporting people to live in their local community

☐

Other - please say



**Question 1G:** Where is your service based? *Tick all that apply*

- ☐ Scotland
- ☐ Wales
- ☐ Northern Ireland
- ☐ North East England
- ☐ North West England
- ☐ Yorkshire and Humberside
- ☐ The East of England
- ☐ East Midlands
- ☐ West Midlands
- ☐ South West
- ☐ South
- ☐ South East
- ☐ Greater London
- ☐ The whole UK



**Question 1H:** What is your role in adult social care?

- ☐ Care worker
- ☐ Senior care worker
- ☐ Registered manager
- ☐ Other manager
- ☐ Nurse
- ☐ Other - please say



**Question 1I:** Do you work through an agency?

- ☐ All my work in social care is through an agency
- ☐ Some of my work in social care is through an agency
- ☐ I don't work through an agency



**Question 1J:** Which area of the UK do you live in?

- ☐ Scotland
- ☐ Wales
- ☐ Northern Ireland
- ☐ North East England
- ☐ North West England
- ☐ Yorkshire and Humberside
- ☐ The East of England
- ☐ East Midlands
- ☐ West Midlands
- ☐ South West
- ☐ South
- ☐ South East
- ☐ Greater London

# The new rules we are suggesting



**Question 2:** How much do you think the new rules we are suggesting, will stop staff working in more than 1 care setting?

- ☐ They will help to stop staff moving between care settings
- ☐ The rules need some changes to help stop staff moving between care settings
- ☐ The rules will not stop staff moving between care settings
- ☐ The rules will make it harder to stop moving between care settings
- ☐ I don't know

Please explain why you ticked that box?







**Question 3:** Do you think the new rules should also apply to these other jobs in care homes?



**a) Managers**

- ☐ Should apply
- ☐ Should not apply
- ☐ I don't know



**b) Staff who are not carers, like cleaning staff**

- ☐ Should apply
- ☐ Should not apply
- ☐ I don't know

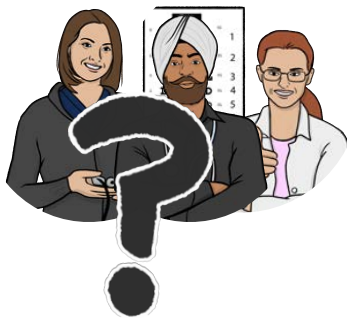


If you think any other staff should be able to carry on moving between care settings, please tell us which ones?



**Question 4:** The new rules we are suggesting are to stop staff moving between care homes and other health and social care settings.

Are there any types of care home that should not have to follow the new rules? Please say which ones:



Are there any types of health and care service that should not have to follow the new rules? Please say which ones:



Are there any other places of work that you think should have to follow these new rules? Please say which ones:

# Making the new rules work



**Question 5:** How easy do think is it for services to make sure care staff don't move between care settings?

- ☐ Very easy
- ☐ Quite easy
- ☐ Quite difficult
- ☐ Very difficult
- ☐ I don't know

Please explain why you ticked that box?





**Question 6:** How often do you think services will have to use someone who is also working in another care setting?

- ☐ Every day
- ☐ Once a week
- ☐ Every 2 weeks
- ☐ Once a month
- ☐ Less than once a month
- ☐ I don't know

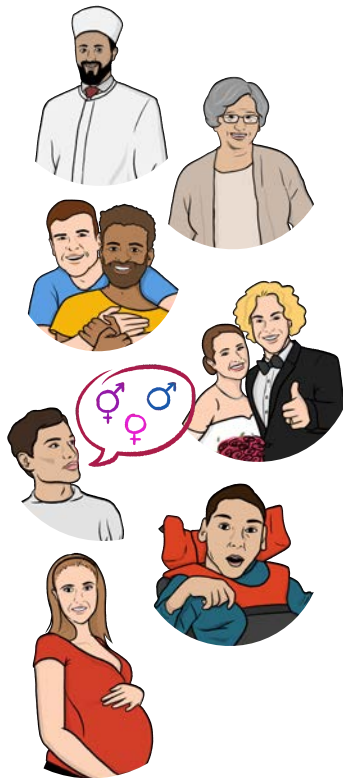


Please explain why you ticked that box?

# How people are affected



**Question 7:** Would the new rules we are suggesting be unfair to any of these, and other, groups of people?



- People of a certain race or religion
- Older people
- Gay people
- Married people
- Women, men or trans people
- Disabled people
- People who are pregnant or have a new baby

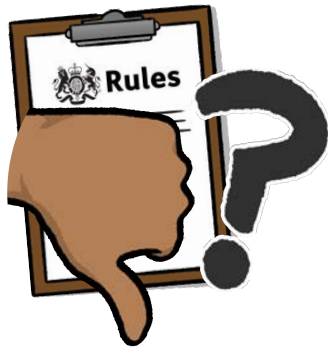
- ☐ Yes, very unfair
- ☐ Yes, a bit unfair
- ☐ No
- ☐ I don't know



Please explain why you ticked that box on page 19?



**Question 8:** How can we make sure these people or groups are supported or not affected in a negative way?



**Question 9:** Would the new rules we are suggesting be unfair to any businesses?

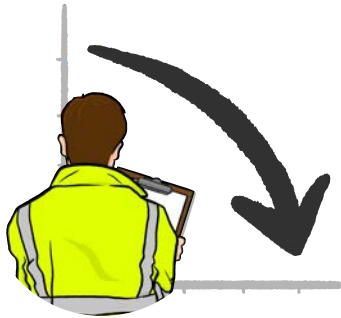
- ☐ Yes
- ☐ No
- ☐ I don't know

Please explain why you ticked that box?



**Question 10:** Please tell us how you think we could make sure we don't treat these businesses unfairly?

# Managing the new rules



**Question 11:** Are you worried that the new rules we are suggesting will mean care settings are less safe?

- ☐ Yes
- ☐ No
- ☐ I don't know

Please explain why you ticked that box?





**Question 12:** If care staff have to give up 1 of their jobs, do you think care services will be able to give them extra hours in just 1 setting?

- ☐ Yes, in most cases
- ☐ Yes, in some cases
- ☐ No
- ☐ I don't know

Please explain why you ticked that box?





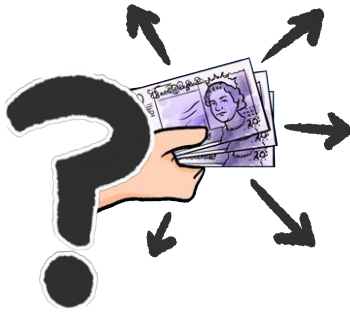
**Question 13:** Will the new rules we are suggesting mean that care services can't do the other things they are supposed to do?

- ☐ Yes
- ☐ No
- ☐ I don't know

Please explain why you ticked that box?







**Question 14:** Do you think care homes will get enough money from the Government to make up for the extra costs caused by the new rules?

- ☐ Yes
- ☐ No
- ☐ Don't know

Please explain why you ticked that box?



# Keeping people safe



**Question 15:** At the moment, care homes are advised to stop care staff moving between care settings, but it is not a rule.

Are you worried about this?

☐

Yes

☐

No

☐

Don't know

Please explain why you ticked that box?





**Question 16:** Are you worried that care homes will not provide a safe service if they have to follow the new rules we are suggesting?

- ☐ Yes
- ☐ No
- ☐ Don't know

Please explain why you ticked that box?





**Question 17:** Are you worried that managers would be allowed to use staff from other care settings for certain reasons?

- ☐ Yes
- ☐ No
- ☐ Don't know

Please explain why you ticked that box?





**Question 18:** Is there anything else you would like to say?

A large, empty rectangular box with a black border, intended for the user to provide their answer to the question.

# Thank you



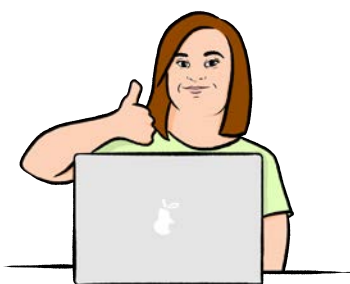
Thank you. Your answers will help the Government to make a decision about the new rules.

## For more information



If you need more information please go to:

**[www.gov.uk/stopping-movement-of-staff-between-care-settings](http://www.gov.uk/stopping-movement-of-staff-between-care-settings)**



To fill in an online version of the Easy Read survey go to:

**<https://consultations.dhsc.gov.uk/5fb69b7ef31e80184f30e997>**