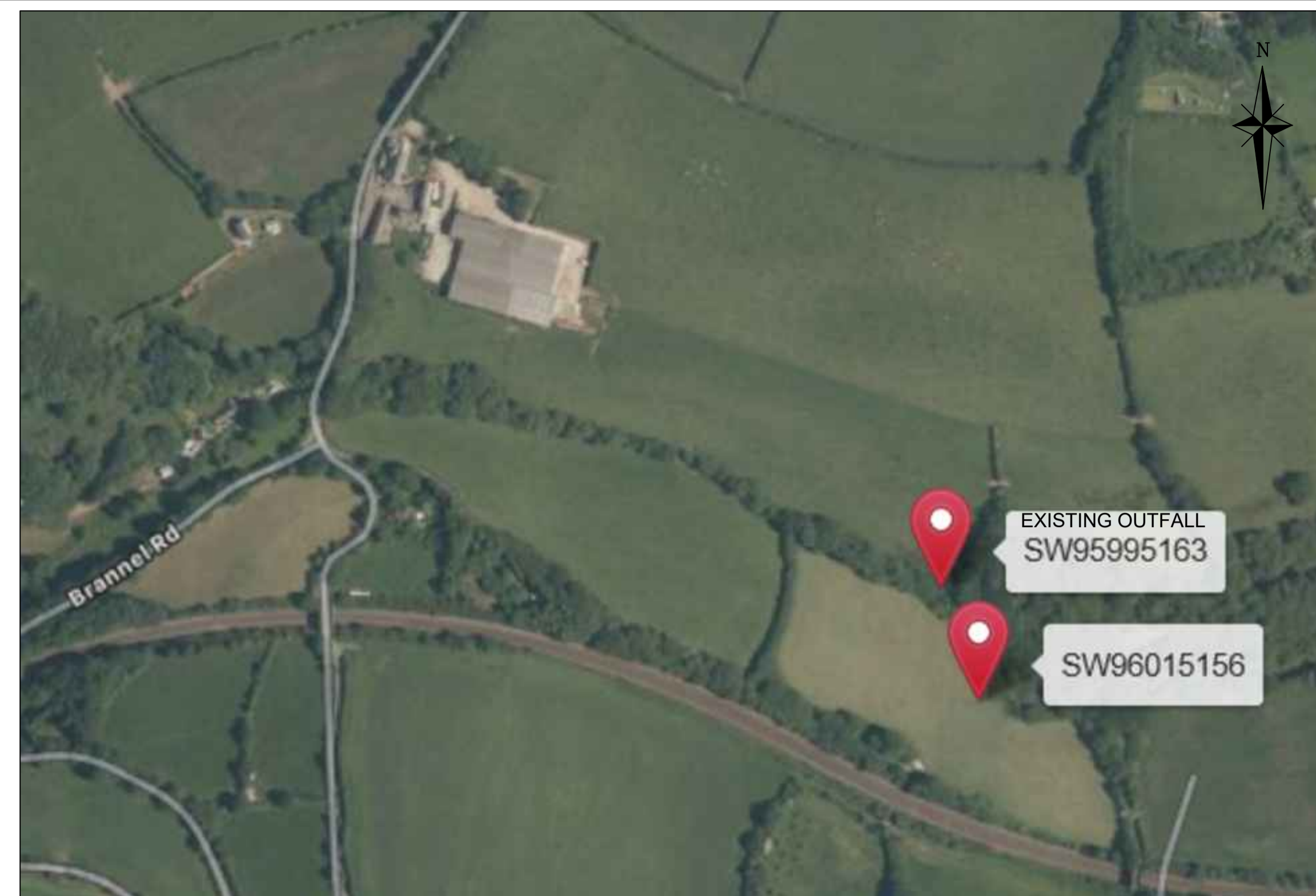




SITE LOCATION
(SCALE 1:12500)



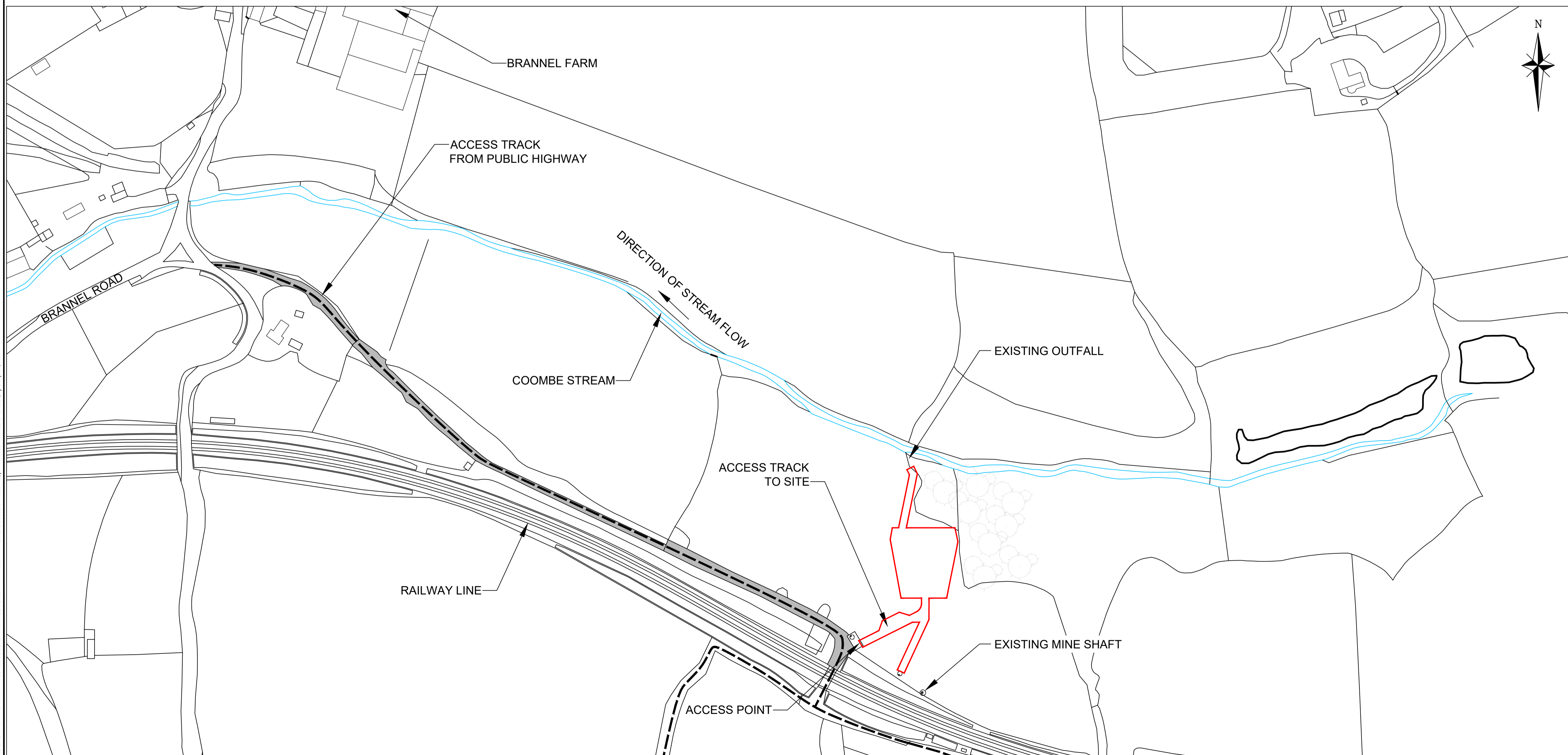
AERIAL VIEW

NOTES:

1. ALL DIMENSIONS ARE IN MILLIMETRES UNLESS STATED OTHERWISE.
2. ALL LEVELS ARE IN METRES AOD.
3. THIS DRAWING TO BE READ IN CONJUNCTION WITH WSP DRAWINGS 70046697-101, 102, 103 AND 104.
4. AREA ENCLOSED BY RED LINE = 1650 m²

KEY:

PUBLIC FOOTPATH ————



PROPOSED SITE LOCATION AND ACCESS
(SCALE 1:1250)

REV	DATE	BY	DESCRIPTION	CHK	APP
P01	18/03/2019	PAC	FIRST ISSUE	JW	PC

DRAWING STATUS: **S0 - WORK IN PROGRESS**



Severn House, Lime Kiln Close, Stoke Gifford, BS34 8SQ, UK
T+ 44 (0) 117 906 2300
wsp.com

CLIENT: **The Coal Authority**

ARCHITECT:

SITE/PROJECT: **GWINDRA FEASIBILITY STUDY
VFR LARGE-SCALE TRIAL**

TITLE: **LOCATION PLAN**

SCALE @ AT:	CHECKED:	APPROVED:	
AS SHOWN	JW	PC	
PROJECT NO:	DESIGNED:	DRAWN:	DATE:
70046697	KB	PAC	March 19

DRAWING NO:	REV:
70046697-100	P01

© WSP UK Ltd

File name: W:\10702038 CA GWINDRA FEASIBILITY STUDY\0109 DOCUMENTS\LARGE SCALE VFR TRIAL\DRAWINGS\LARGE SCALE VFR TRIAL\DRAWINGS\LARGE SCALE VFR TRIAL\180319_151623.dwg, printed on 15 March 2019 15:16:23, by Campbell, Patrick