



Department
of Health &
Social Care

London – Daily case rate, positivity and confirmed cases (updated 15/10/20)

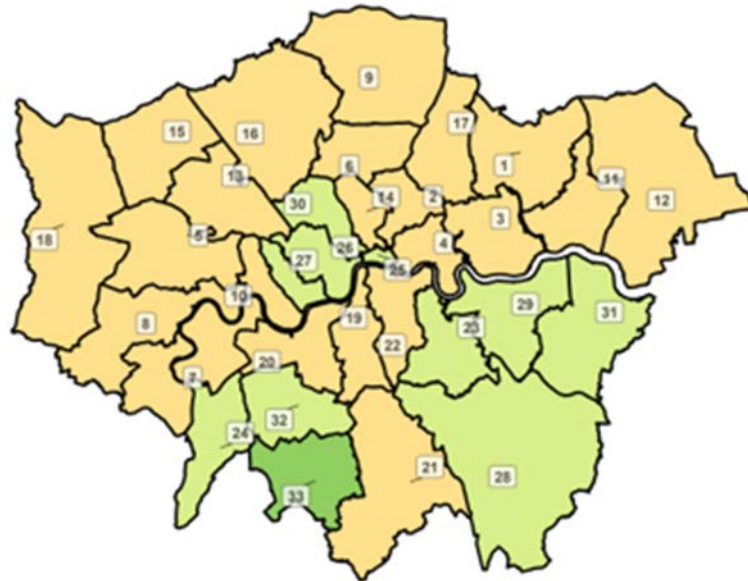
London – Daily case rate, positivity and confirmed cases (updated 15/10/20)

	Individuals tested per day per 100,000 population (7 day moving average)		Percentage individuals test positive (weekly)		Case rate per 100,000 population (weekly)		Case rate per 100,000 population aged 60 years and over (weekly)	
Ealing	320.0	↑	6.7%	↑	144.5	↑	86.5	↑
Richmond upon Thames	324.7	↑	6.2%	↑	137.9	↑	50.6	↑
Hackney	273.7	↑	7.3%	↑	134.1	↑	99.2	↑
Redbridge	316.1	↑	6.5%	↑	131.1	↑	96.7	↑
Harrow	304.1	↑	6.1%	↑	123.0	↑	44.8	↑
Haringey	267.3	↓	6.4%	↑	115.8	↑	48.6	↑
Barnet	308.0	↑	5.3%	↑	110.9	↑	50.1	↑
Hammersmith and Fulham	370.3	↑	4.2%	↑	108.0	↑	7.2	↓
Kingston upon Thames	322.2	↑	4.9%	↑	105.9	↑	48.7	↑
Hounslow	320.5	↑	5.2%	↑	105.3	↑	60.9	↑
Wandsworth	277.8	↑	5.4%	↑	101.3	↑	34.8	↑
Kensington and Chelsea	273.3	↑	5.5%	↑	100.6	↑	54.3	↑
Newham	251.4	↑	6.3%	↑	100.2	↑	82.9	↑
Tower Hamlets	239.0	↑	6.4%	↑	98.8	↑	56.2	↑
Hillingdon	330.0	↑	4.7%	↑	96.1	↑	34.1	↓
Waltham Forest	290.3	↑	5.0%	↑	96.0	↑	91.6	↑
Barking and Dagenham	301.4	↓	5.0%	↑	95.8	↑	75.7	↑
Lambeth	289.1	↑	4.9%	↑	94.5	↑	40.5	↑
Havering	312.1	↓	4.7%	↑	93.6	↑	67.7	↑
Westminster	215.2	↑	6.2%	↑	92.2	↑	47.8	↑
Brent	293.5	↑	4.9%	↑	89.5	↑	59.1	↑
Enfield	289.4	↑	4.6%	↑	89.3	↑	65.0	↑
Camden	245.2	↑	5.6%	↑	89.2	↑	32.4	↑
Islington	271.1	↑	5.2%	↑	89.1	↑	53.5	↑
Lewisham	279.4	↑	4.1%	↑	76.5	↑	29.0	↓
Sutton	321.2	↑	3.4%	↑	74.6	↑	62.3	↑
Southwark	277.7	↑	4.2%	↑	74.6	↑	25.1	↑
Merton	289.5	↑	3.8%	↑	73.6	↑	44.8	↑
Croydon	321.1	↑	3.3%	↑	72.9	↑	26.1	↓
Greenwich	295.6	↑	3.7%	↑	72.2	↑	28.5	↑
Bromley	282.6	↑	3.8%	↑	71.0	↑	25.3	↑
Bexley	279.6	↑	3.5%	↑	64.0	↑	20.5	↓
City of London +	296.9	↓	1.5%	↓	41.1	↓	0.0	⇒

The data is for specimens taken between 3 October 2020 and 9 October 2020

London – Weekly incidence by local authority – NB specimen dates to 7th October

London COVID-19 cases: 24 Sep to 30 Sep 2020
Weekly case rates per 100,000 population by local authority



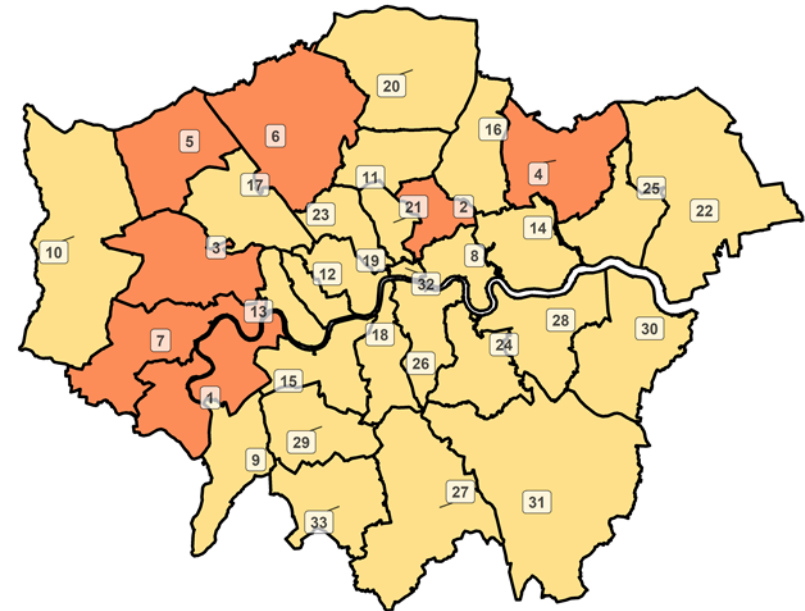
Covid-19 rate by local authority



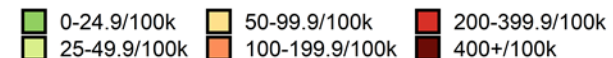
Data from SGSS; Pillar 1 and 2 testing. Figure by Outbreak Surveillance Team, Public Health England.

Contains National Statistics data including 2018 population estimates © Crown copyright and database right 2020

London COVID-19 cases: 01 Oct to 07 Oct 2020
Weekly case rates per 100,000 population by local authority



Covid-19 rate by local authority

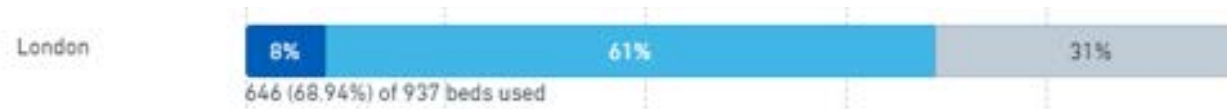


Data from SGSS; Pillar 1 and 2 testing. Figure by Outbreak Surveillance Team, Public Health England.

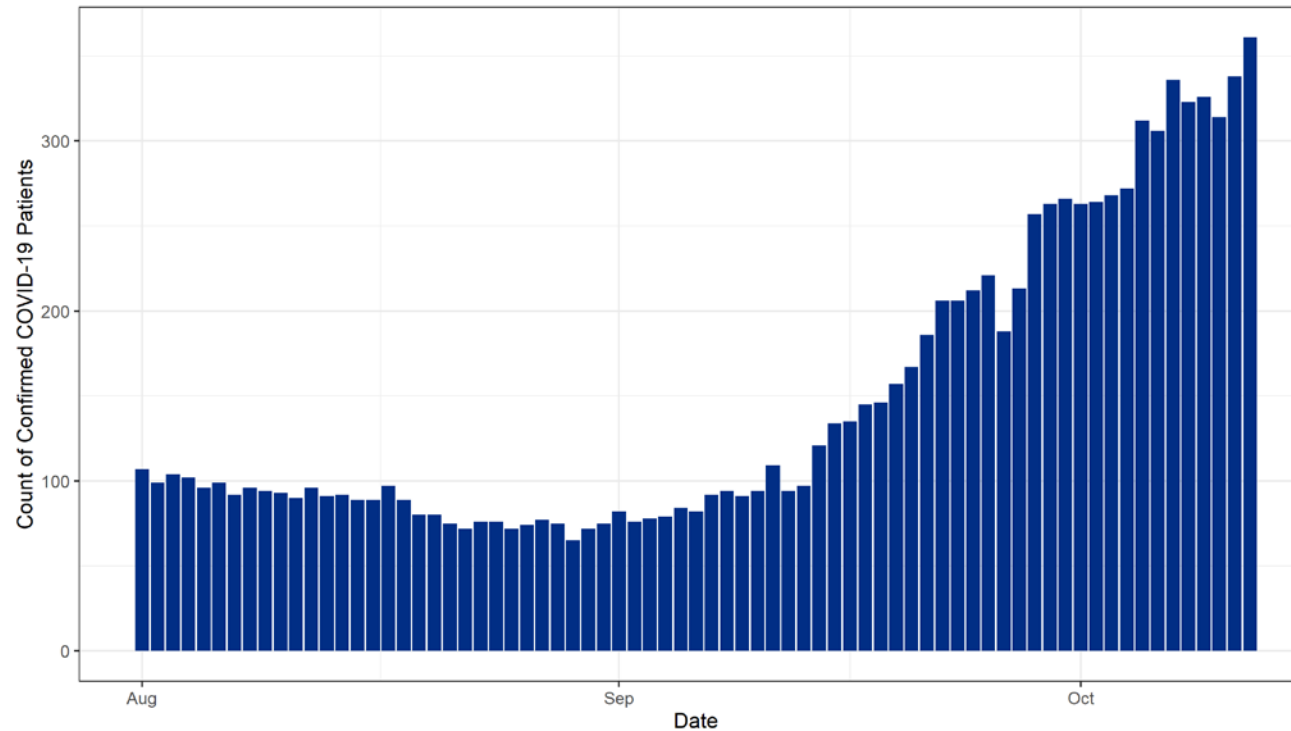
Contains National Statistics data including 2018 population estimates © Crown copyright and database right 2020

London – Daily count of COVID-19 patients in hospital at 8am

ITU/HDU Capacity



Daily count of confirmed COVID-19 patients in hospital at 8am in London



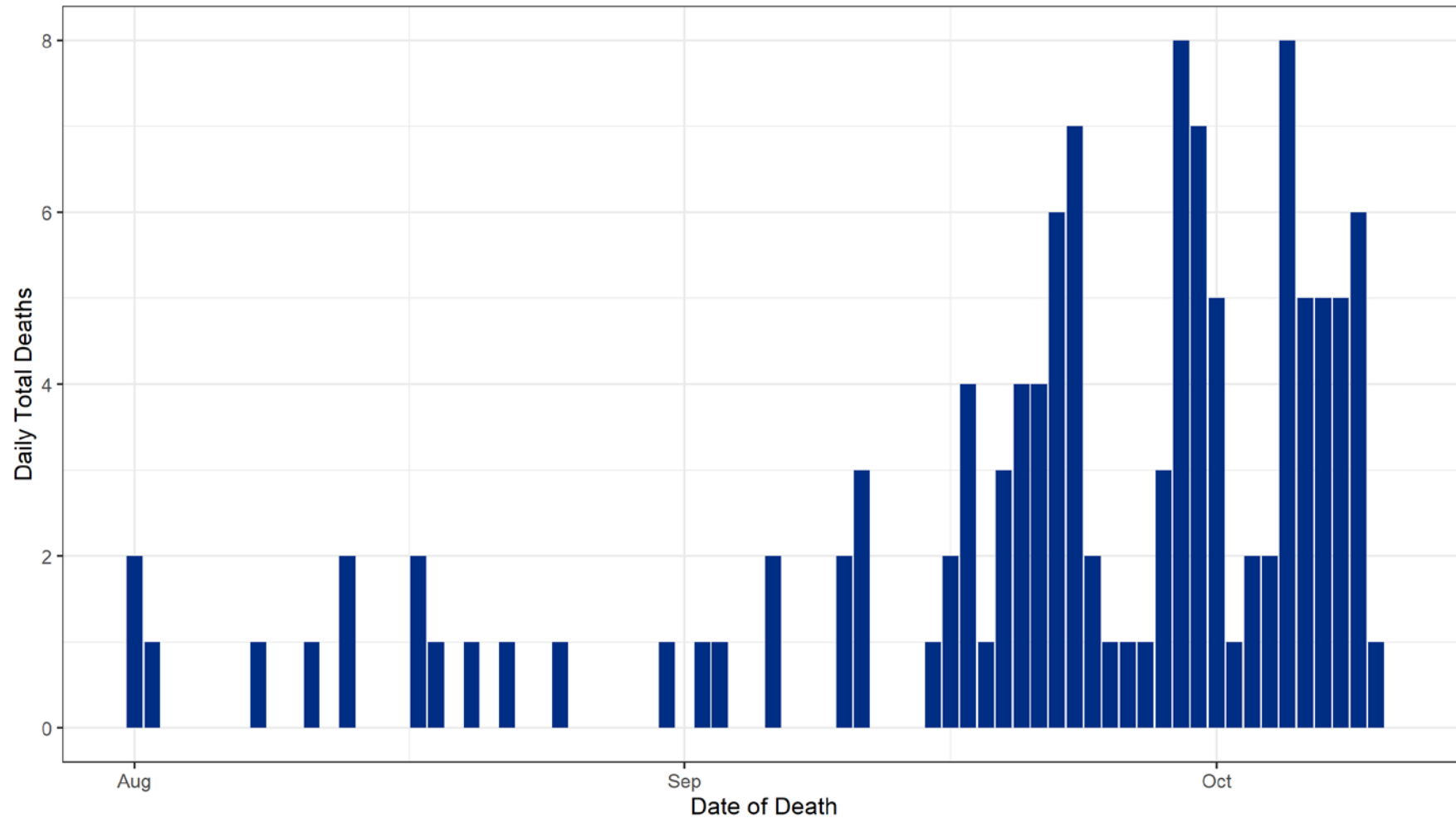
Source: <https://coronavirus.data.gov.uk/> / NHS Foundry (NHS SitRep data)

Data from 01 August 2020 to 12 October 2020



London – Daily deaths within 28 days of positive COVID-19 test

Daily deaths within 28 days of positive COVID-19 test by date of death in London



Data from 01 August 2020 to 11 October 2020

Source: <https://coronavirus.data.gov.uk/> / PHE mortality surveillance