



Department
of Health &
Social Care

Lancashire: Deputy Chief Medical Officer (DCMO) brief

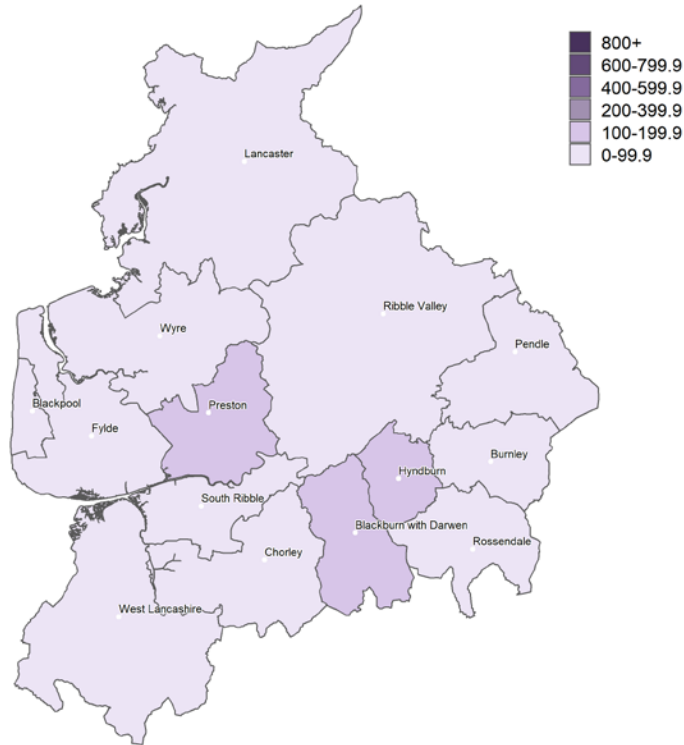
Situation report, main body

14 October 2020

7-day rate of COVID-19 cases (pillar 1 and pillar 2) per 100,000 population, by lower-tier local authority, Lancashire

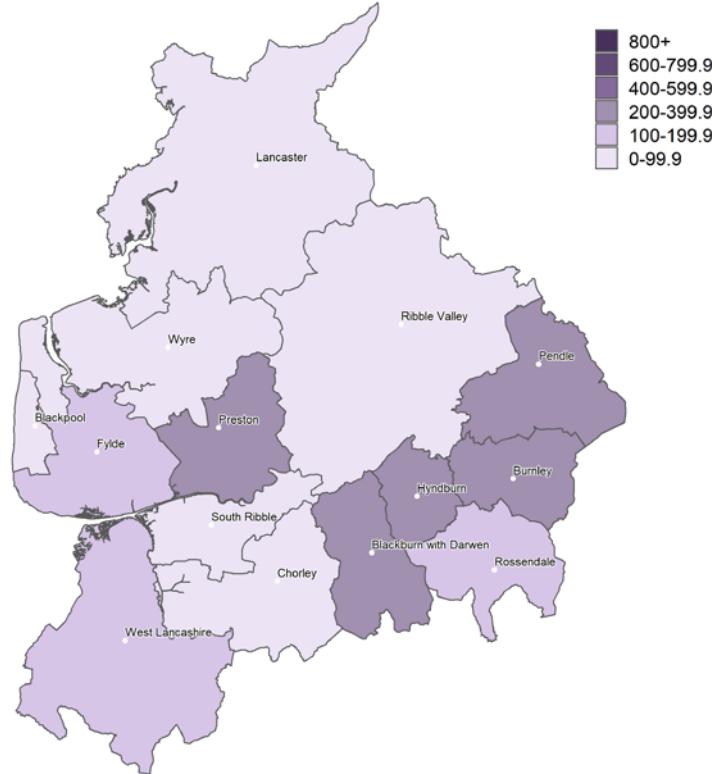
Regional COVID-19 cases:
04 Sep to 10 Sep 2020

Weekly case rates per 100,000 population
by local authority



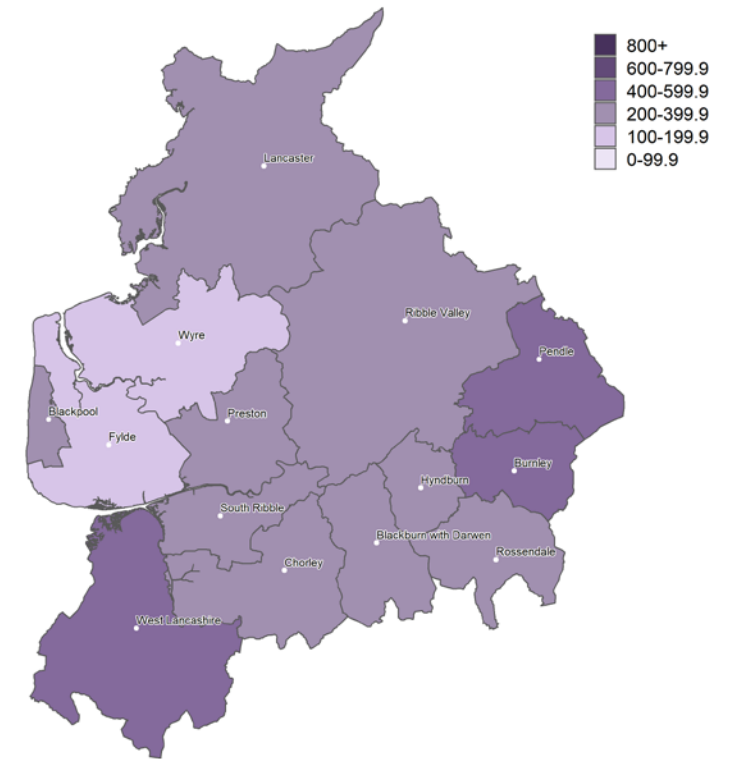
Regional COVID-19 cases:
18 Sep to 24 Sep 2020

Weekly case rates per 100,000 population
by local authority



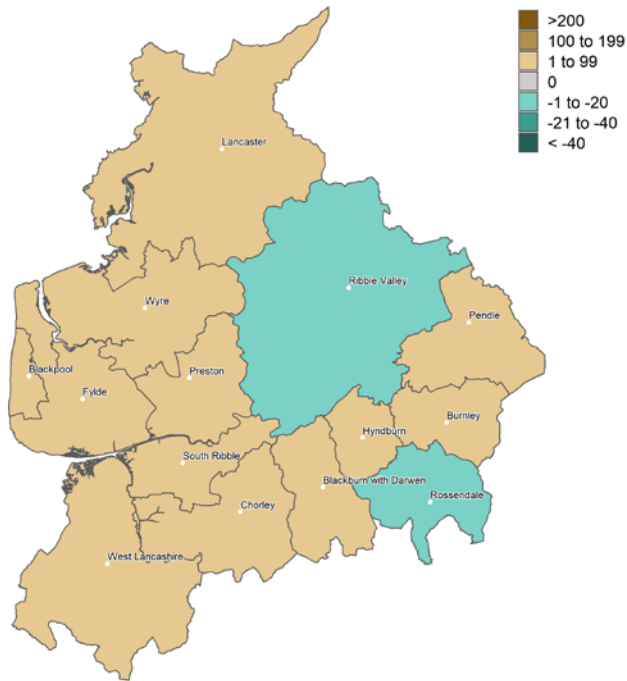
Regional COVID-19 cases:
02 Oct to 08 Oct 2020

Weekly case rates per 100,000 population
by local authority

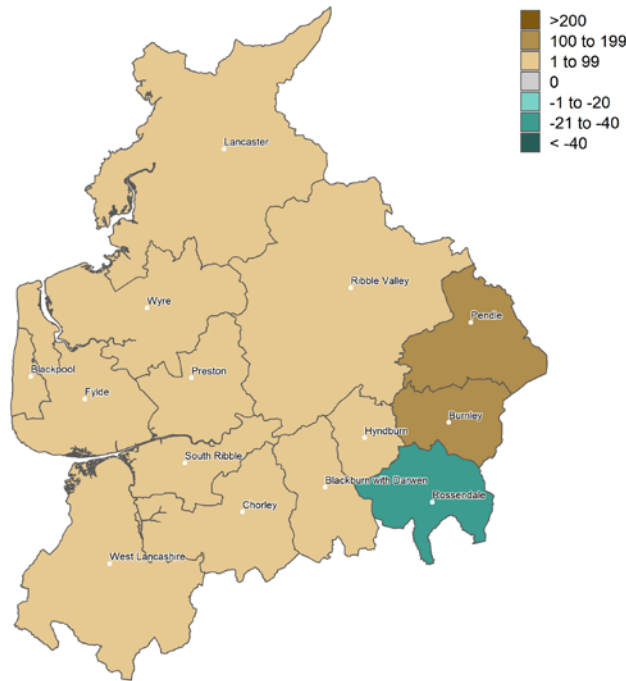


7-day rate change (pillar 1 and pillar 2) per 100,000 population, by lower-tier local authority, Lancashire

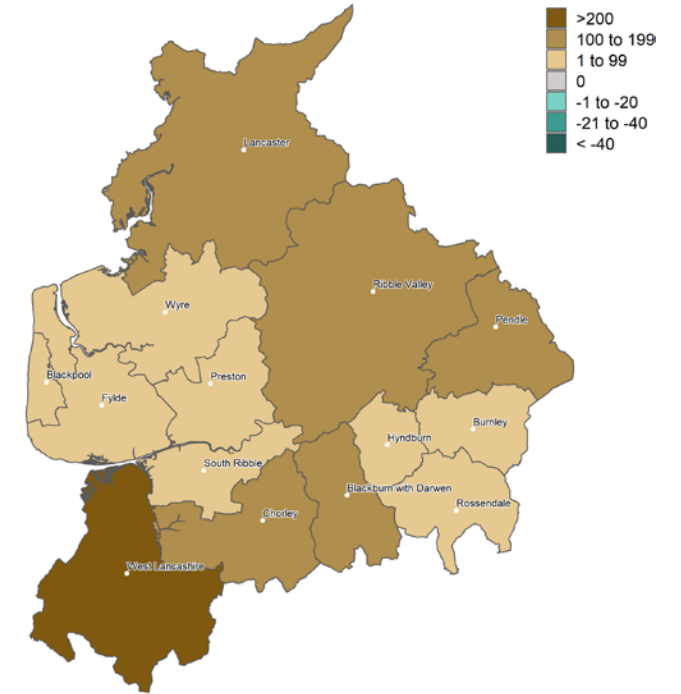
Rate change between 28 Aug to 03 Sep 2020
and 04 Sep to 10 Sep 2020
Rate change per 100,000 population
by local authority



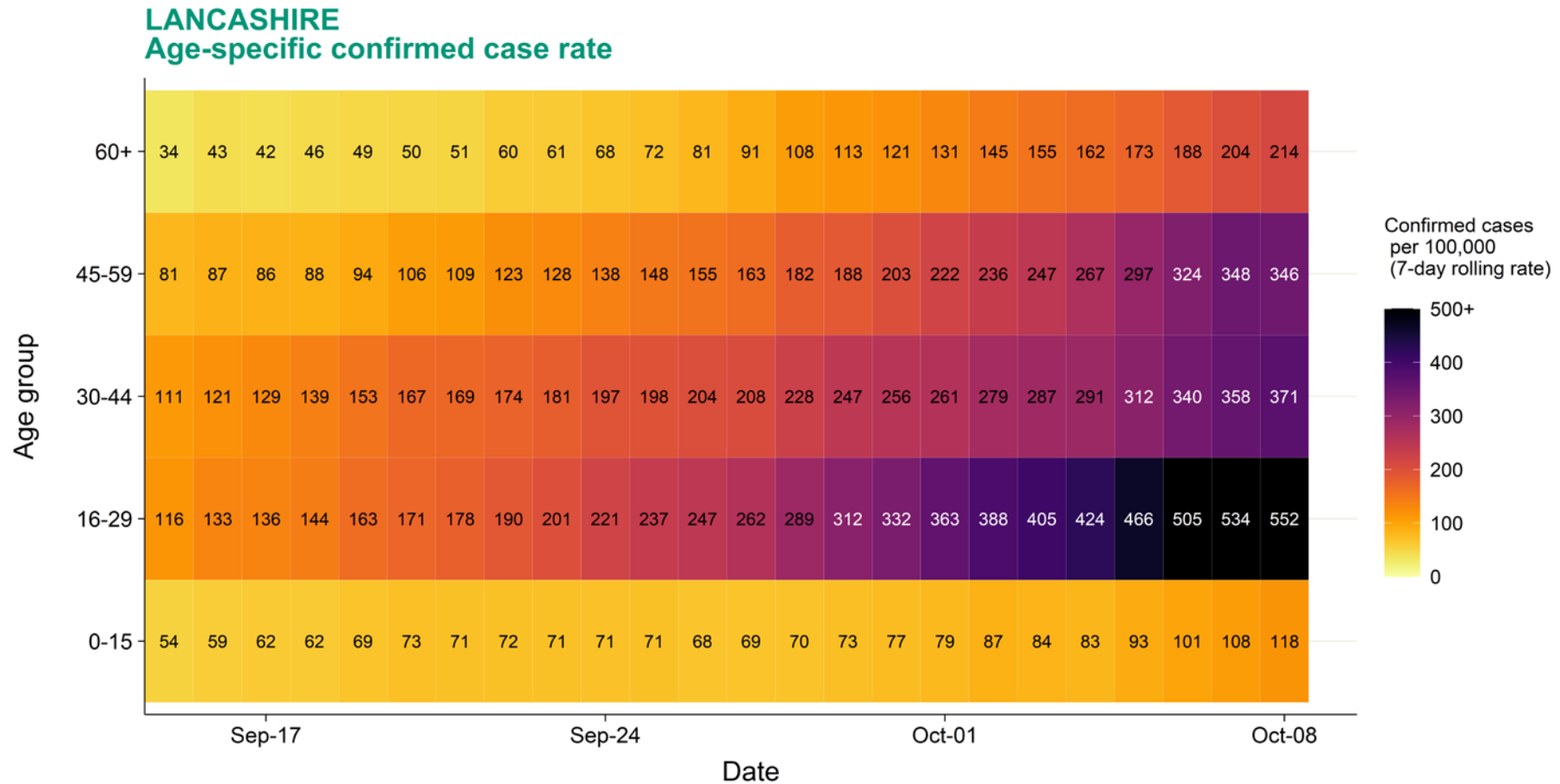
Rate change between 11 Sep to 17 Sep 2020
and 18 Sep to 24 Sep 2020
Rate change per 100,000 population
by local authority



Rate change between 25 Sep to 01 Oct 2020
and 02 Oct to 08 Oct 2020
Rate change per 100,000 population
by local authority



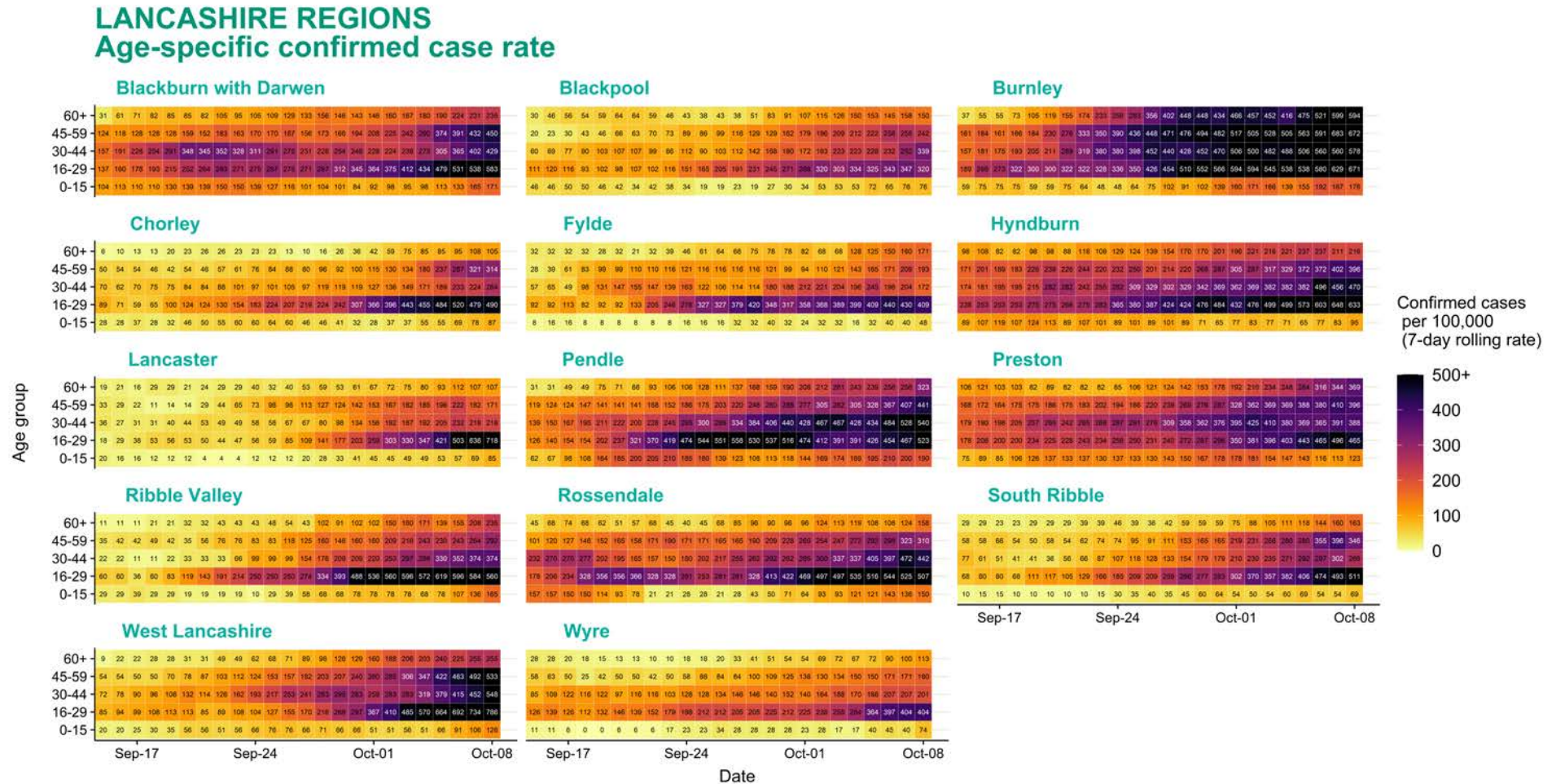
Age: regional heatmap of weekly case rate across both pillars 1 and 2 – data up to 8 October 2020



Source: Case data from SGSS. Produced by Outbreak Surveillance Team, PHE

Contains National Statistics data © Crown copyright and database right 2020

Age: regional heatmap of weekly case rate across both pillars 1 and 2 – data up to 8 October 2020

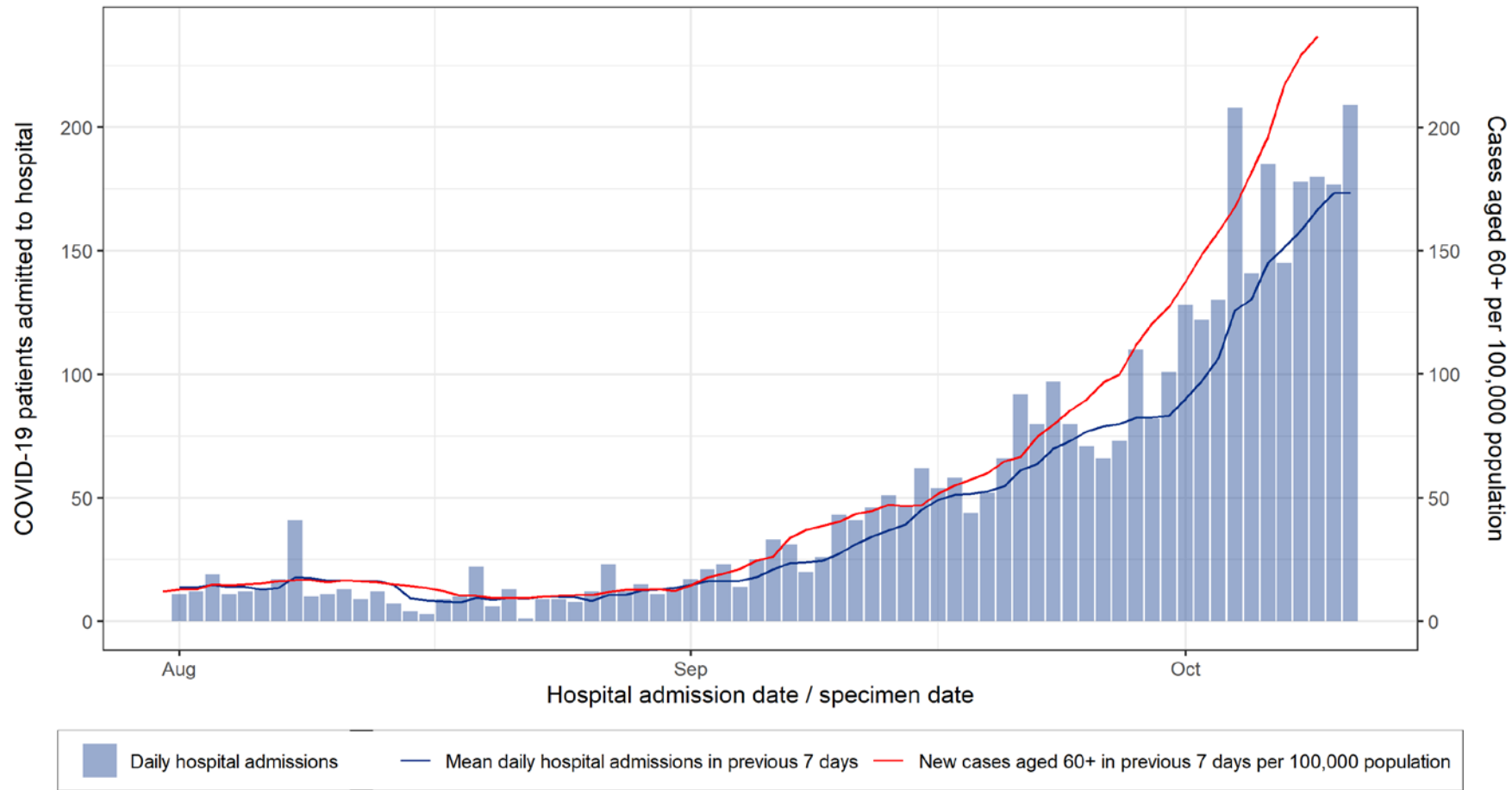


Source: Case data from SGSS. Produced by Outbreak Surveillance Team, PHE

Contains National Statistics data © Crown copyright and database right 2020

Hospital admissions (all age) and case rate in those over 60 years of age

Daily number of COVID-19 patients admitted to hospital and weekly case rate in those 60 years and over in North West



Data from 01 August 2020 to 11 October 2020