

Department for Environment, Food and Rural Affairs

Isles of Scilly MCZ

Feature Maps

May 2019

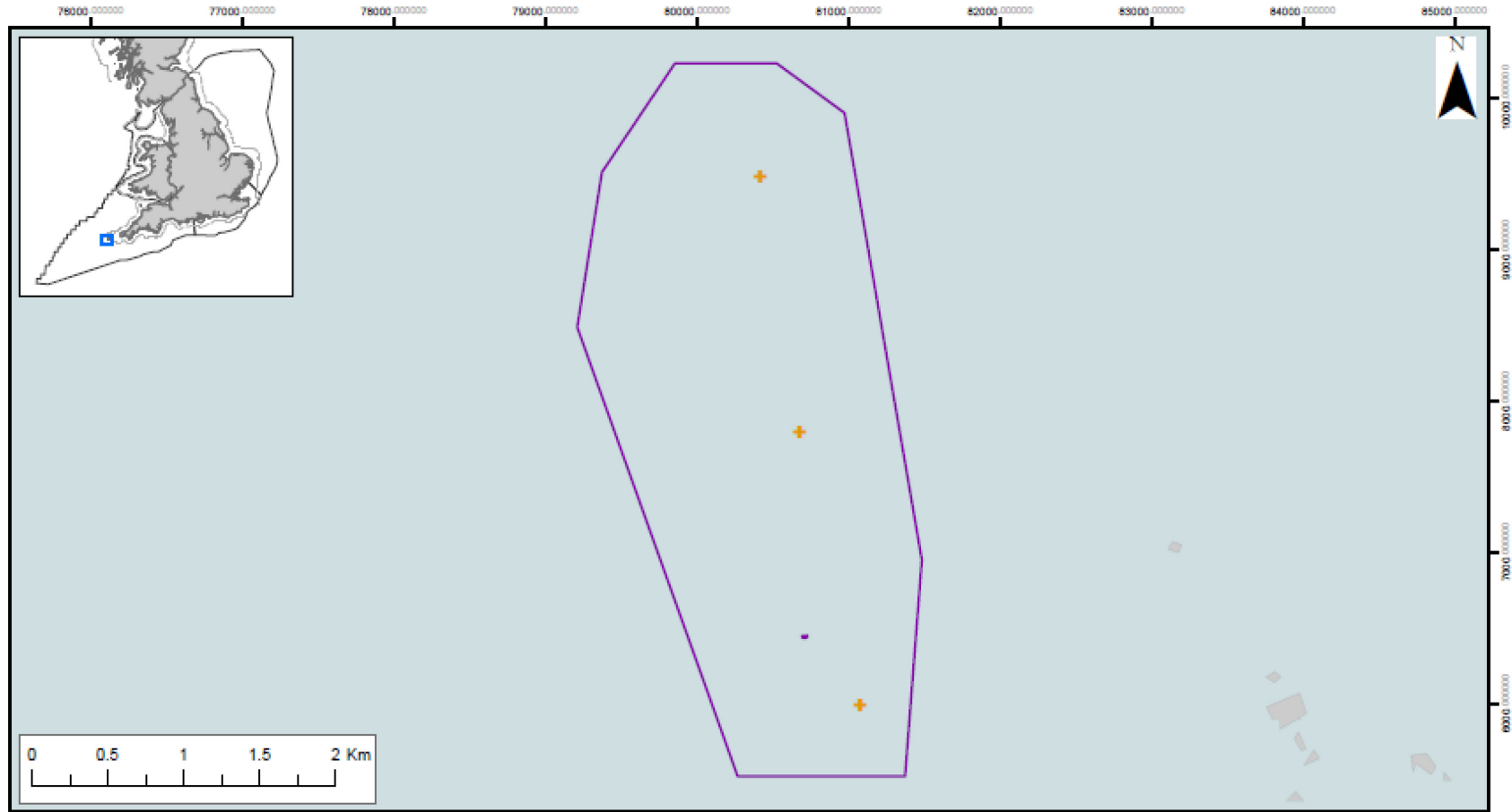
The following maps show where the features protected by this Marine Conservation Zone (MCZ) are located.

There are twelve separate maps, to make it easier to see the locations of features. The maps show the broad-scale habitats and features of conservation importance. Broad scale habitats represent habitats, and associated species that live on and in the habitat. Features of conservation importance are specific habitats and species that are known to be rare, threatened or declining in our seas.

A range of different types of surveys have been used to create these maps. The symbols on the map show where a sample has been taken, or where a feature has been recorded in a specific location. For many features, there is also shading to show the extent of the area in which the feature is found. For the broad scale habitat maps, this is created from survey data and using mathematical models. On the FOCI maps, the extent is only shown where a survey has confirmed that the feature exists in this whole area. More detailed information on the techniques used and the features themselves can be found here:

<http://publications.naturalengland.org.uk/publication/5703660445368320>

Mapped data on features correct at the time of publishing, for the most up to date feature data please consult the MAGIC website (<https://magic.defra.gov.uk/>).



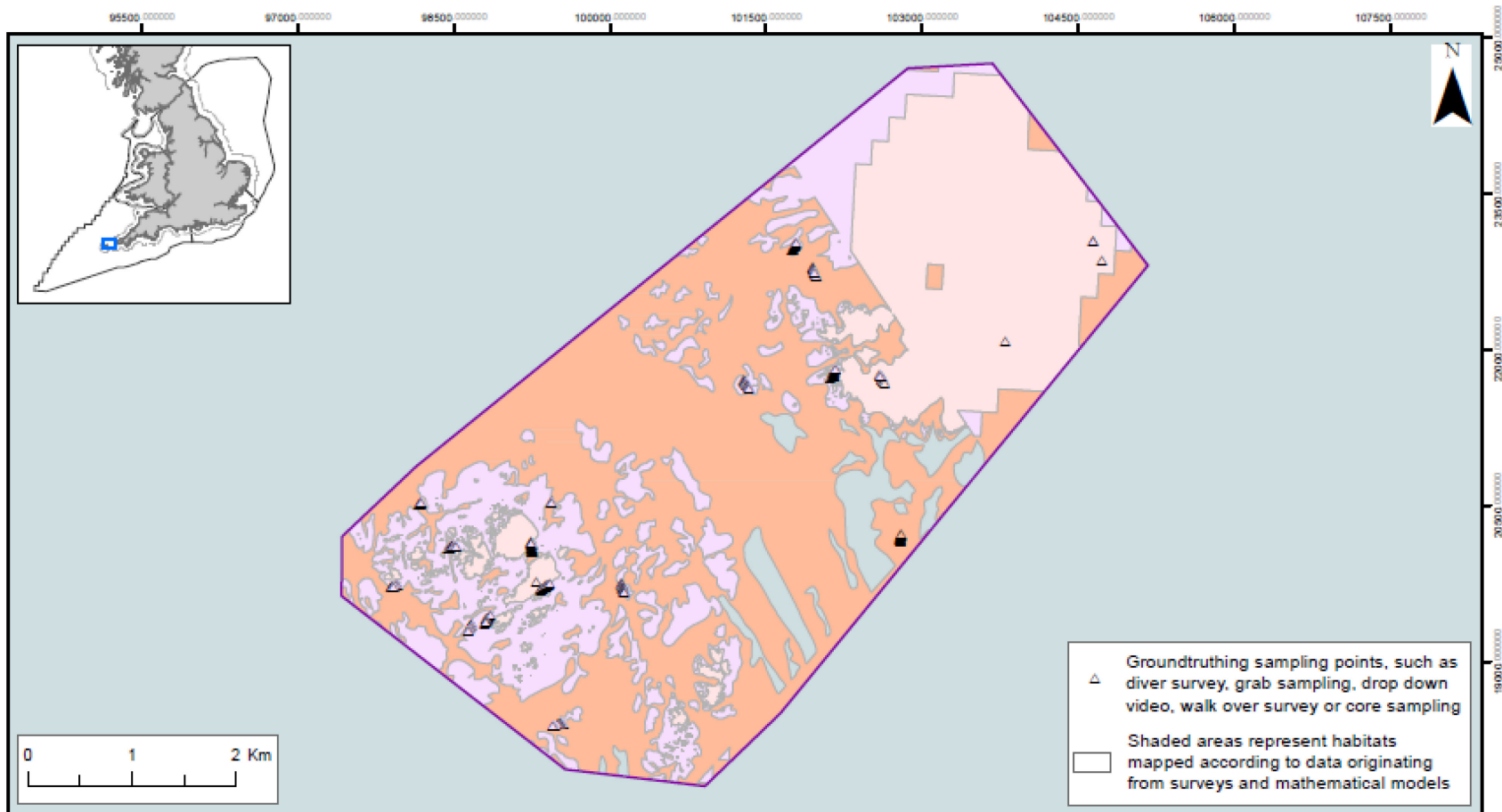
Isles of Scilly Sites
Bishop to Crim MCZ

- Marine Conservation Zone
- Regional MCZ Project Area
- 12nM Territorial Seas Limit
- Sea
- Land

Features designated in 2013

- + Spiny lobster (*Palinurus elephas*)


Contains information from the Ordnance Survey
 © Crown Copyright and database right 2019.
 Ordnance Survey 100022021. UKHO Data
 © British Crown Copyright. All rights reserved.
 Permission Number Defra 012019.001. This
 product has been derived in part from material
 obtained from the UK Hydrographic Office with
 the permission of the Controller of Her Majesty's
 Stationery Office and UK Hydrographic Office
 (www.ukho.gov.uk). Map produced by
 Natural England 2019.
 Reference: Theme ID:UKMCZ0008-01
 Map Projection: British National Grid





Isles of Scilly Sites - Bristows to the Stones MCZ Broad Scale Habitats

-  Marine Conservation Zone
-  Regional MCZ Project Area
-  12nM Territorial Seas Limit
-  Sea
-  Land

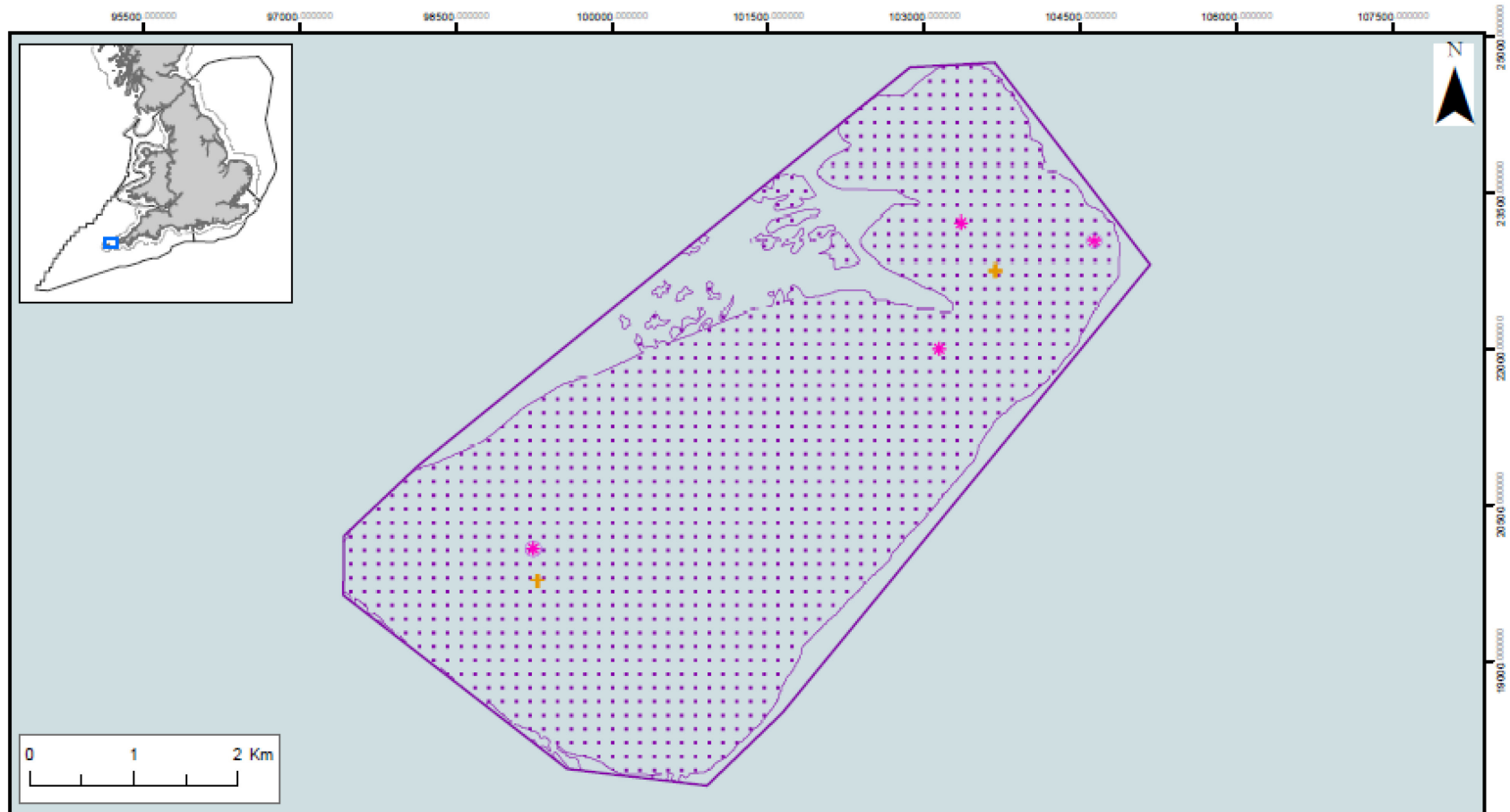
Features designated in 2013

-  High energy circalittoral rock (A4.1)

Features designated in 2019

-  Moderate energy circalittoral rock (A4.2)
-  Subtidal coarse sediment (A5.1)





Contains information from the Ordnance Survey © Crown Copyright and database right 2019. Ordnance Survey 100022021. UKHO Data © British Crown Copyright. All rights reserved. Permission Number Defra 012019.001. This product has been derived in part from material obtained from the UK Hydrographic Office with the permission of the Controller of Her Majesty's Stationery Office and UK Hydrographic Office (www.ukho.gov.uk). Map produced by Natural England 2019. Reference: Theme ID: UKMCZ0008-02 Map Projection: British National Grid



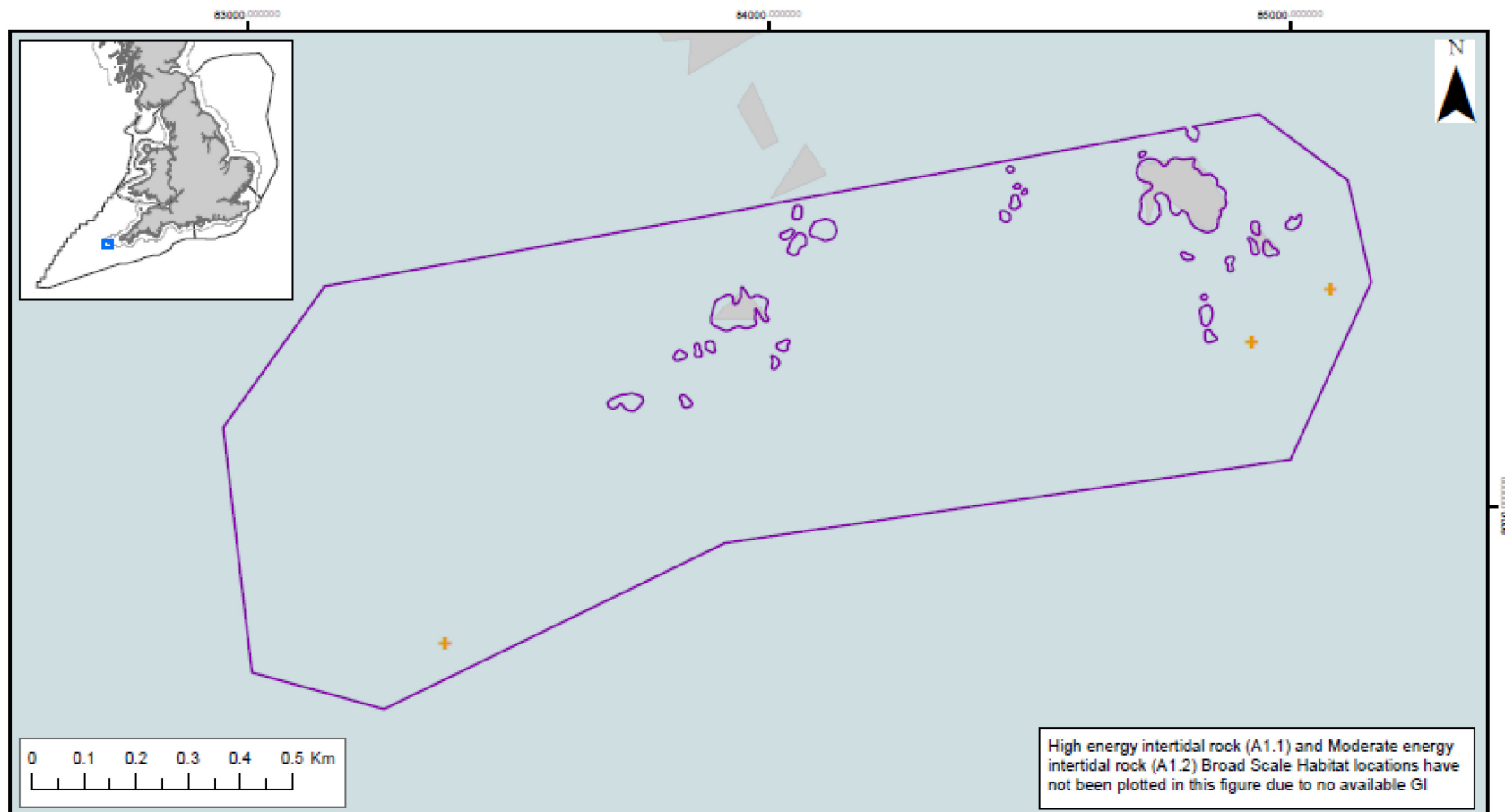
Isles of Scilly Sites - Bristows to the Stones MCZ
Features of Conservation Importance

-  Marine Conservation Zone
-  Regional MCZ Project Area
-  12nM Territorial Seas Limit
-  Sea
-  Land

Features designated in 2013

-  Pink sea-fan (*Eunicella verrucosa*)
-  Spiny lobster (*Palinurus elephas*)
-  Fragile sponge and anthozoan communities on subtidal rocky habitats
-  Fragile sponge and anthozoan communities on subtidal rocky habitats

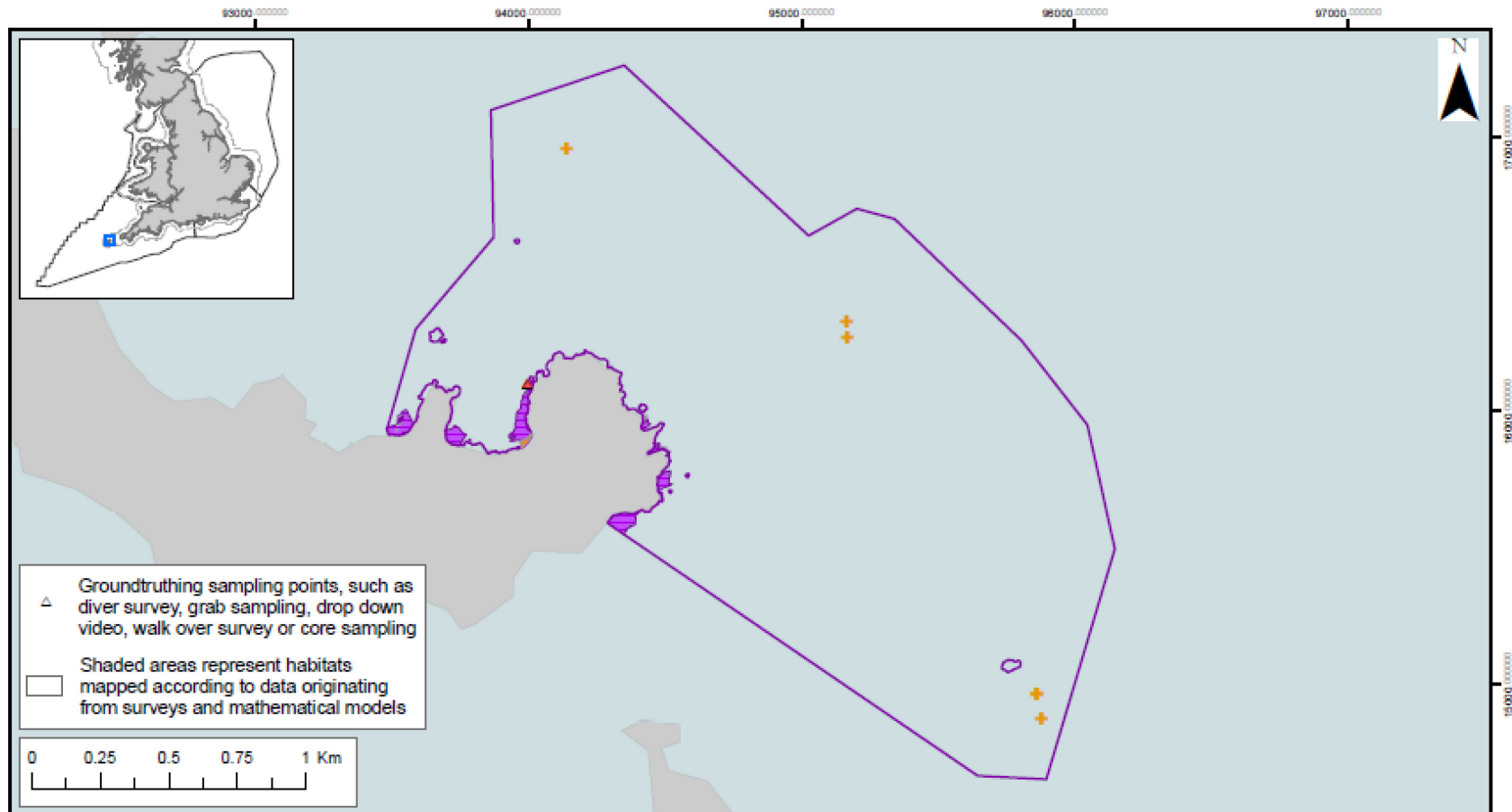
Contains information from the Ordnance Survey
 © Crown Copyright and database right 2019.
 Ordnance Survey 100022021. UKHO Data
 © British Crown Copyright. All rights reserved.
 Permission Number Defra 012019.001. This
 product has been derived in part from material
 obtained from the UK Hydrographic Office with
 the permission of the Controller of Her Majesty's
 Stationery Office and UK Hydrographic Office
 (www.ukho.gov.uk). Map produced by
 Natural England 2019.
 Reference: Theme ID: UKMCZ0008-02
 Map Projection: British National Grid



- Isles of Scilly Sites**
Gilstone to Gorregan MCZ
- Marine Conservation Zone
 - Regional MCZ Project Area
 - 12nM Territorial Seas Limit
 - Sea
 - Land

- Features designated in 2013**
- + Spiny lobster (*Palinurus elephas*)






Contains information from the Ordnance Survey
 © Crown Copyright and database right 2019.
 Ordnance Survey 100022021. UKHO Data
 © British Crown Copyright. All rights reserved.
 Permission Number Defra 012019.001. This
 product has been derived in part from material
 obtained from the UK Hydrographic Office with
 the permission of the Controller of Her Majesty's
 Stationery Office and UK Hydrographic Office
 (www.ukho.gov.uk). Map produced by
 Natural England 2019.
 Reference: Theme ID:UKMCZ0008-03
 Map Projection: British National Grid



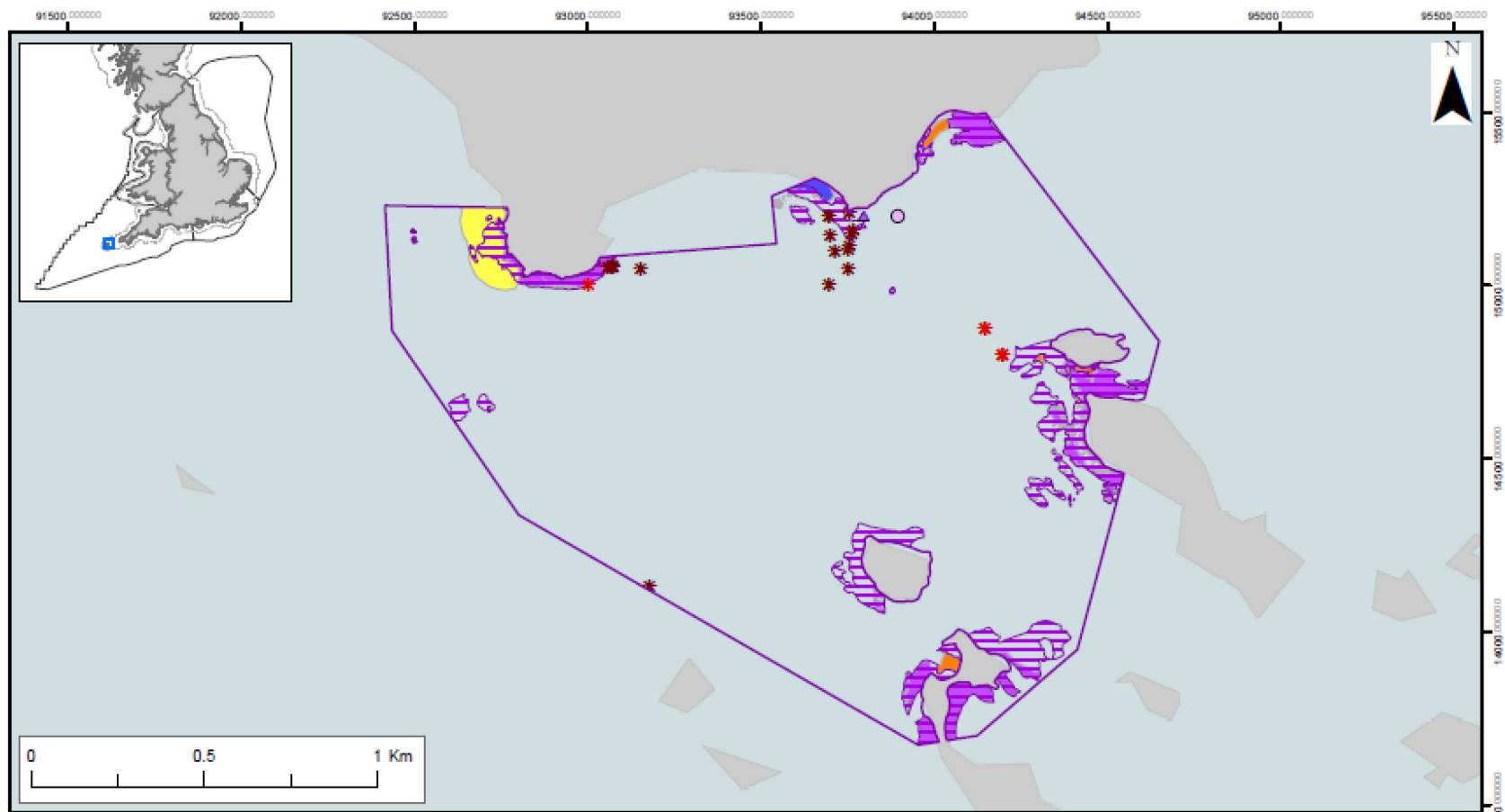
**Isles of Scilly Sites
Hanjague to Deep Ledge MCZ**

-  Marine Conservation Zone
-  Regional MCZ Project Area
-  12nM Territorial Seas Limit
-  Sea
-  Land

Features designated in 2013

-  Spiny lobster (*Palinurus elephas*)
-  Intertidal under boulder communities
-  High energy intertidal rock (A1.1)
-  Moderate energy intertidal rock (A1.2)
-  Intertidal coarse sediment (A2.1)

Contains information from the Ordnance Survey © Crown Copyright and database right 2019. Ordnance Survey 100022021. UKHO Data © British Crown Copyright. All rights reserved. Permission Number Defra 012019.001. This product has been derived in part from material obtained from the UK Hydrographic Office with the permission of the Controller of Her Majesty's Stationery Office and UK Hydrographic Office (www.ukho.gov.uk). Map produced by Natural England 2019. Reference: Theme ID:UKMC20008-04 Map Projection: British National Grid



**Isles of Scilly Sites
Higher Town MCZ**

- Marine Conservation Zone
- Regional MCZ Project Area
- 12nM Territorial Seas Limit
- Sea
- Land

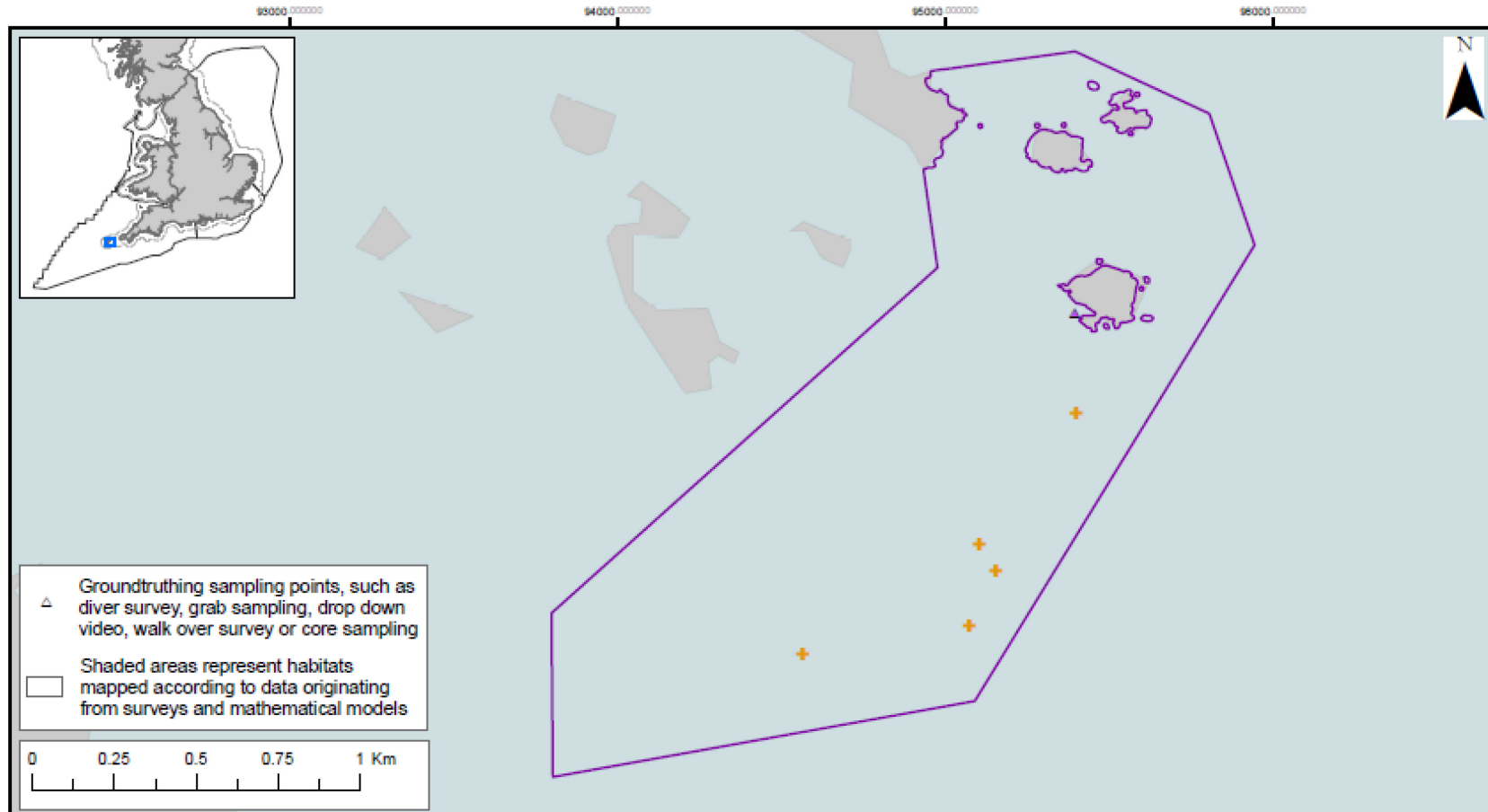
Features designated in 2013

- Stalked jellyfish (*Halicystus auricula*)
- Intertidal under boulder communities
- Intertidal under boulder communities
- Moderate energy intertidal rock (A1.2)
- Low energy intertidal rock (A1.3)
- Intertidal coarse sediment (A2.1)
- Intertidal sand and muddy sand (A2.2)

Features designated in 2019

- Stalked jellyfish (*Galvadosia cruxmelitensis*)
- Groundtruthing sampling points, such as diver survey, grab sampling, drop down video, walk over survey or core sampling
- Shaded areas represent habitats mapped according to data originating from surveys and mathematical models

Contains information from the Ordnance Survey © Crown Copyright and database right 2019. Ordnance Survey 100022021. UKHO Data © British Crown Copyright. All rights reserved. Permission Number Defra 012019.001. This product has been derived in part from material obtained from the UK Hydrographic Office with the permission of the Controller of Her Majesty's Stationery Office and UK Hydrographic Office (www.ukho.gov.uk). Map produced by Natural England 2019. Reference: Theme ID:UKMCZ0008-05 Map Projection: British National Grid





Isles of Scilly Sites

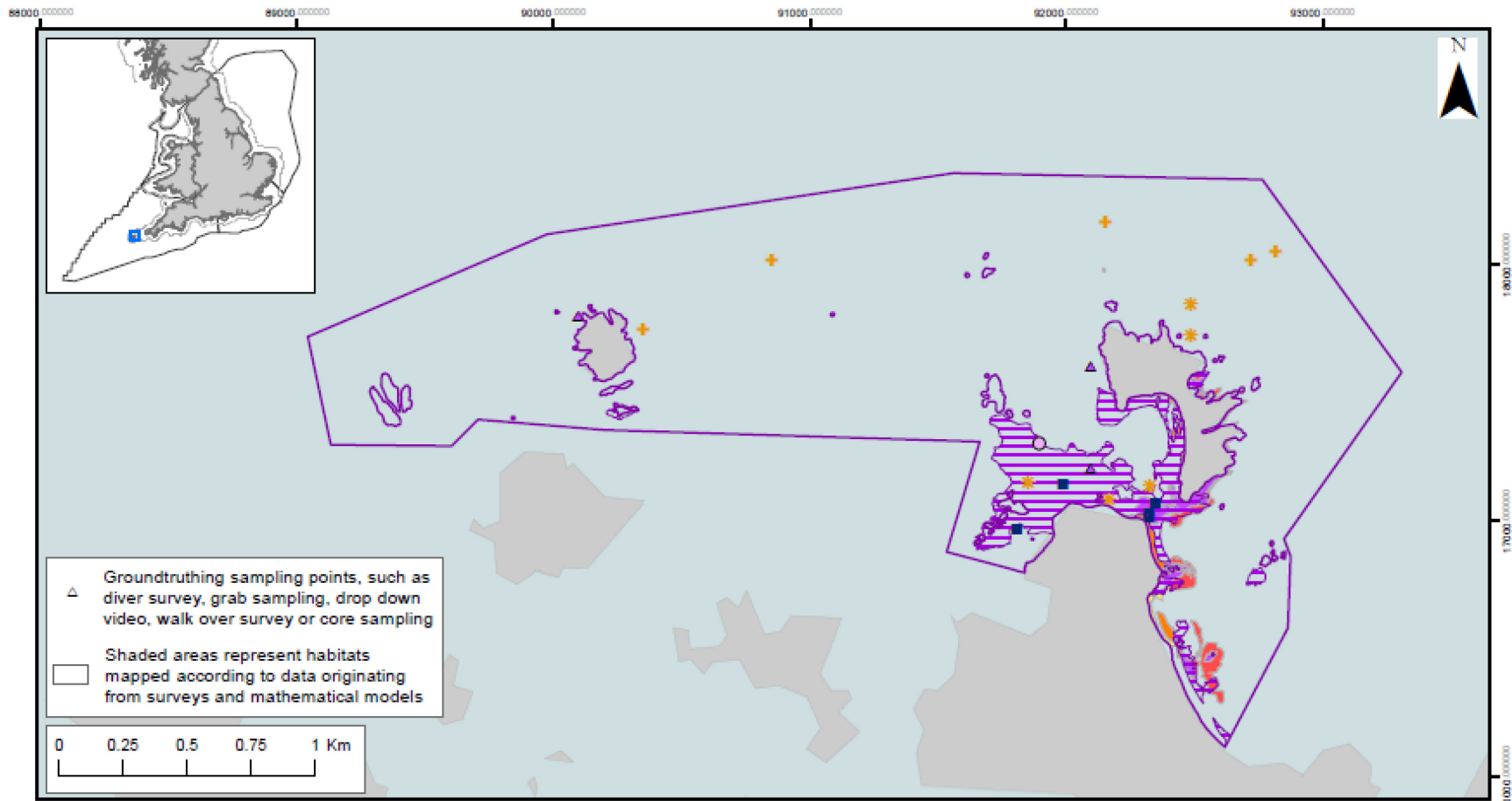
Lower Ridge to Innisvoulcs MCZ

-  Marine Conservation Zone
-  Regional MCZ Project Area
-  12nM Territorial Seas Limit
-  Sea
-  Land

Features designated in 2013

-  Spiny lobster (*Palinurus elephas*)
-  Moderate energy intertidal rock (A1.2)

Contains information from the Ordnance Survey © Crown Copyright and database right 2019. Ordnance Survey 100022021. UKHO Data © British Crown Copyright. All rights reserved. Permission Number Defra 012019.001. This product has been derived in part from material obtained from the UK Hydrographic Office with the permission of the Controller of Her Majesty's Stationery Office and UK Hydrographic Office (www.ukho.gov.uk). Map produced by Natural England 2019. Reference: Theme ID: UKMCZ0008-06 Map Projection: British National Grid



Isles of Scilly Sites
Men a Vaur to White Island MCZ

- Marine Conservation Zone
- Regional MCZ Project Area
- 12nM Territorial Seas Limit
- Sea
- Land

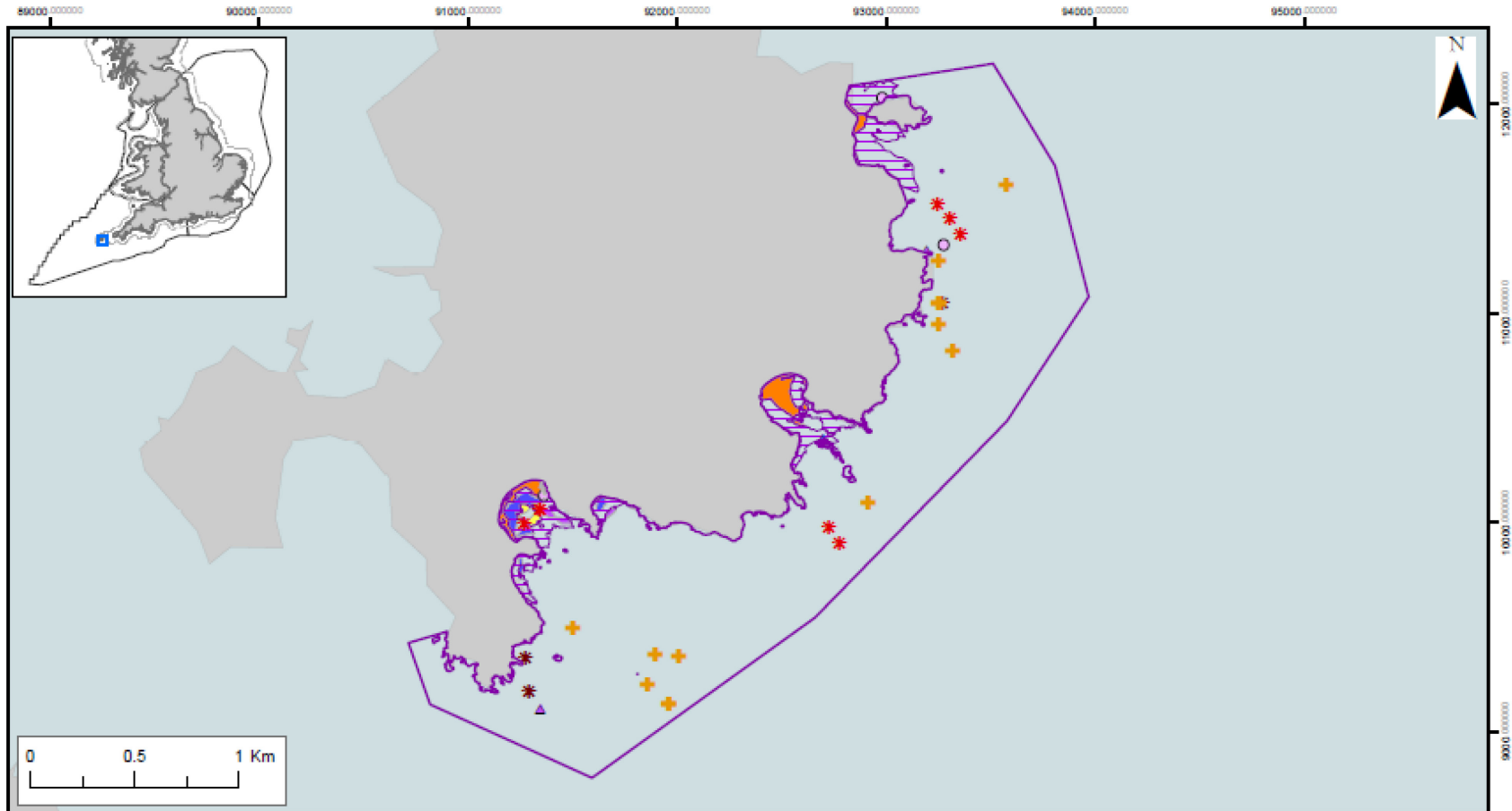
Features designated in 2013

- * Stalked jellyfish (*Calvadosia campanulata*)
- + Spiny lobster (*Palinurus elephas*)
- Intertidal under boulder communities
- Intertidal under boulder communities
- High energy intertidal rock (A1.1)
- Moderate energy intertidal rock (A1.2)
- Intertidal coarse sediment (A2.1)
- Intertidal sand and muddy sand (A2.2)

Features designated in 2019

- Giant goby (*Gobius cobitis*)

Contains information from the Ordnance Survey
 © Crown Copyright and database right 2019.
 Ordnance Survey 100022021. UKHO Data
 © British Crown Copyright. All rights reserved.
 Permission Number Defra 012019.001. This
 product has been derived in part from material
 obtained from the UK Hydrographic Office with
 the permission of the Controller of Her Majesty's
 Stationery Office and UK Hydrographic Office
 (www.ukho.gov.uk). Map produced by
 Natural England 2019.
 Reference: Theme ID:UKMCZ0008-07
 Map Projection: British National Grid



Isles of Scilly Sites
Peninnis to Dry Ledge MCZ

- Marine Conservation Zone
- Regional MCZ Project Area
- 12nM Territorial Seas Limit
- Sea
- Land

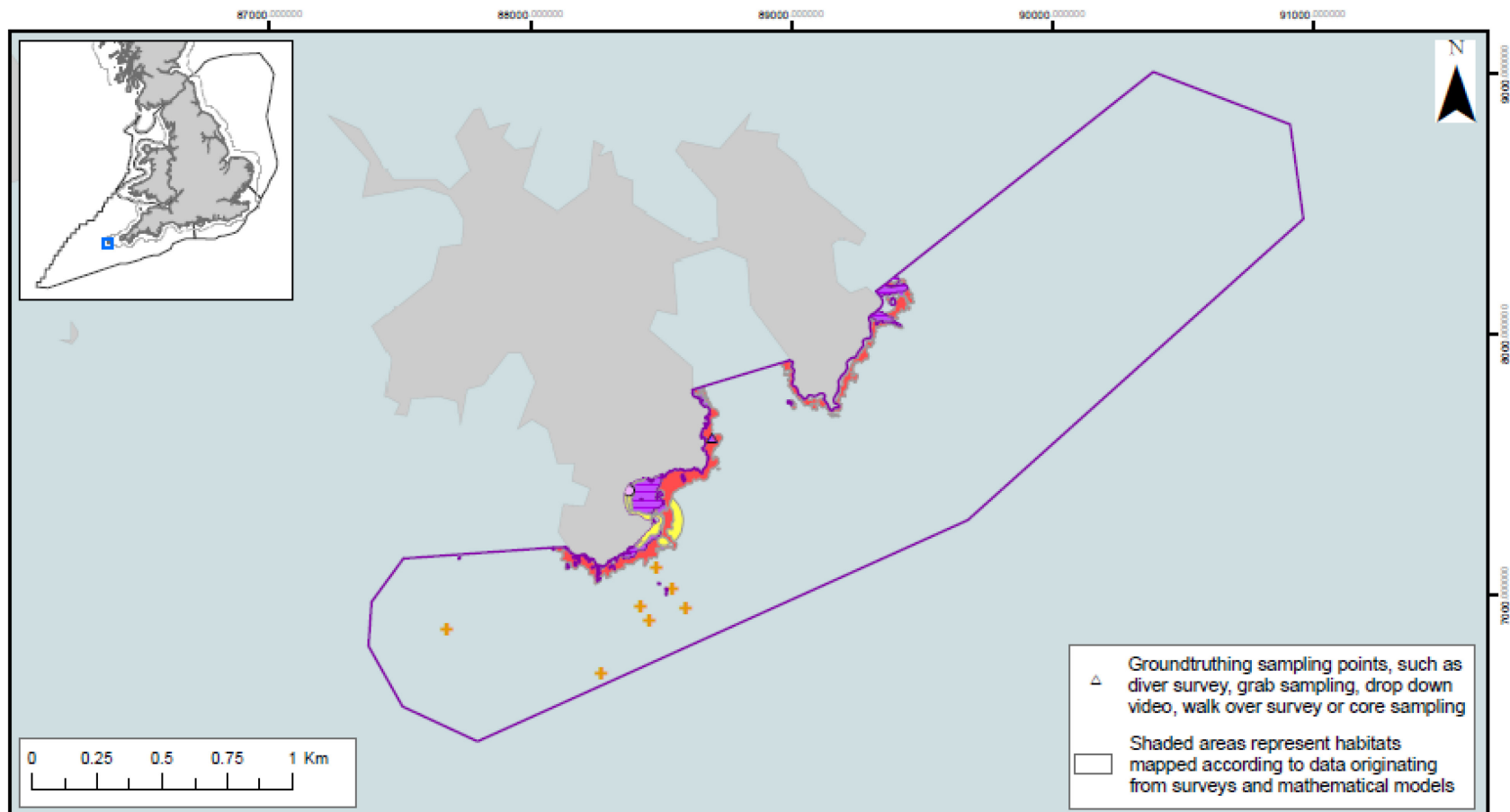
Features designated in 2013

- * Stalked jellyfish (*Halicyustus auricula*)
- + Spiny lobster (*Palinurus elephas*)
- Intertidal under boulder communities
- Intertidal under boulder communities
- Moderate energy intertidal rock (A1.2)
- Low energy intertidal rock (A1.3)
- Intertidal coarse sediment (A2.1)
- Intertidal sand and muddy sand (A2.2)
- Intertidal mixed sediments (A2.4)

Features designated in 2019

- * Stalked jellyfish (*Galvadosia cruxmelitensis*)

Contains information from the Ordnance Survey © Crown Copyright and database right 2019. Ordnance Survey 100022021. UKHO Data © British Crown Copyright. All rights reserved. Permission Number Defra 012019.001. This product has been derived in part from material obtained from the UK Hydrographic Office with the permission of the Controller of Her Majesty's Stationery Office and UK Hydrographic Office (www.ukho.gov.uk). Map produced by Natural England 2019. Reference: Theme ID:UKMCZ0008-08 Map Projection: British National Grid



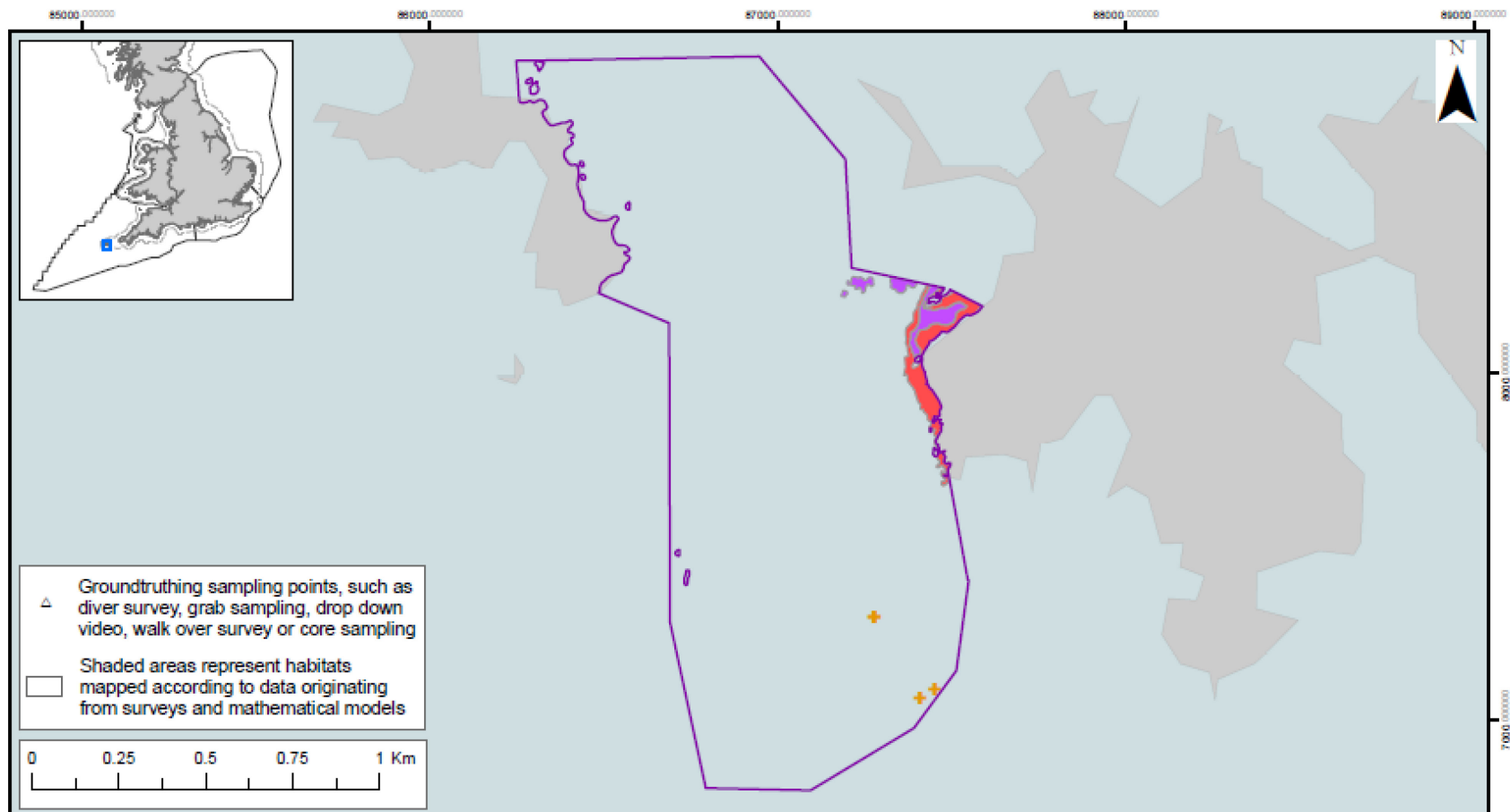
**Isles of Scilly Sites
Plympton to Spanish Ledge MCZ**

- Marine Conservation Zone
- Regional MCZ Project Area
- 12nM Territorial Seas Limit
- Sea
- Land

Features designated in 2013

- + Spiny lobster (*Palinurus elephas*)
- o Intertidal under boulder communities
- Intertidal under boulder communities
- High energy intertidal rock (A1.1)
- Moderate energy intertidal rock (A1.2)
- Intertidal sand and muddy sand (A2.2)

Contains information from the Ordnance Survey © Crown Copyright and database right 2019. Ordnance Survey 100022021. UKHO Data © British Crown Copyright. All rights reserved. Permission Number Defra D12019.001. This product has been derived in part from material obtained from the UK Hydrographic Office with the permission of the Controller of Her Majesty's Stationery Office and UK Hydrographic Office (www.ukho.gov.uk). Map produced by Natural England 2019. Reference: Theme ID:UKMCZ0008-09. Map Projection: British National Grid






Isles of Scilly Sites

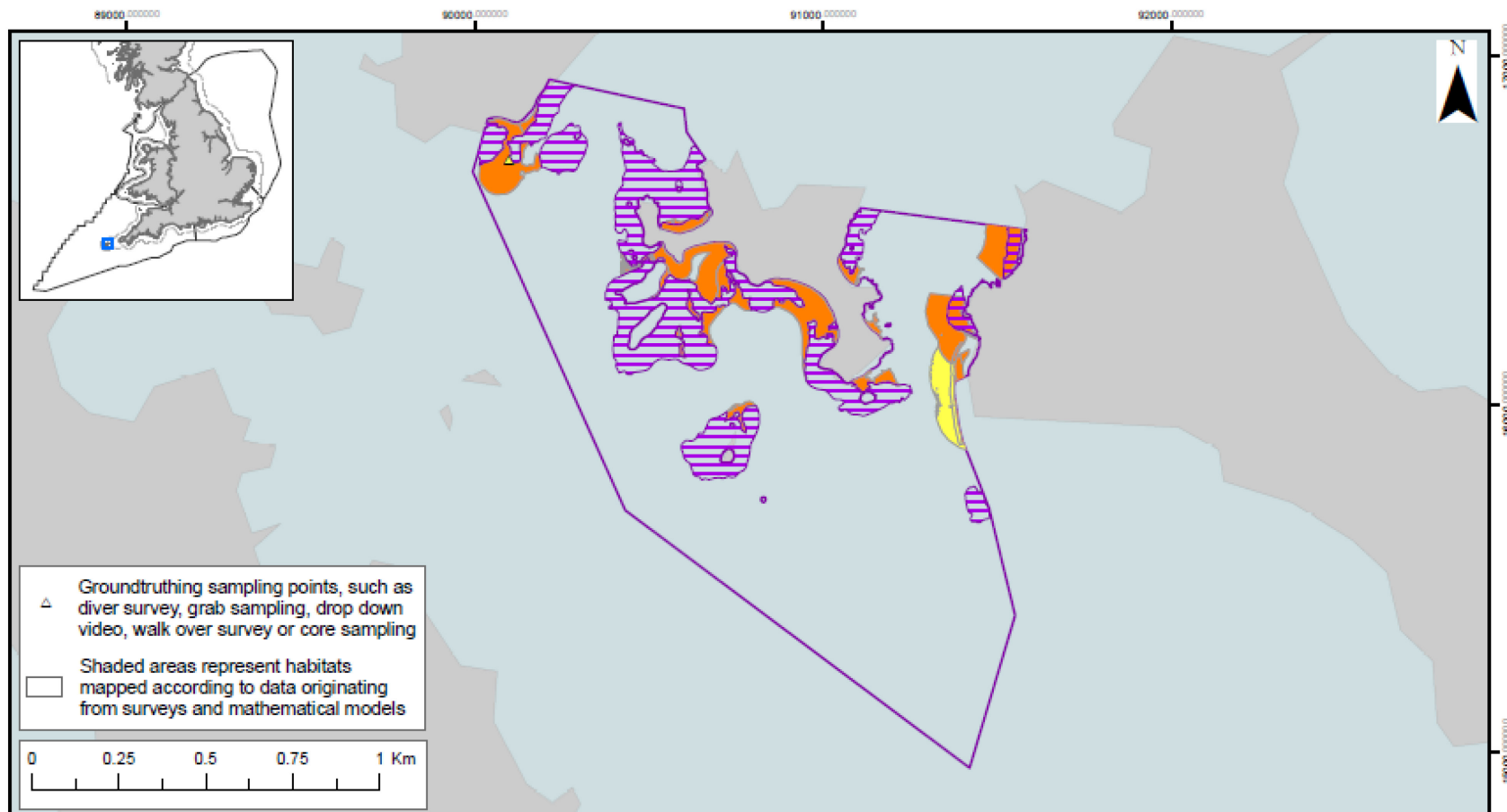
Smith Sound Tide Swept Channel MCZ

-  Marine Conservation Zone
-  Regional MCZ Project Area
-  12nM Territorial Seas Limit
-  Sea
-  Land

Features designated in 2013

-  Spiny lobster (*Palinurus elephas*)
-  High energy intertidal rock (A1.1)
-  Moderate energy intertidal rock (A1.2)

Contains information from the Ordnance Survey © Crown Copyright and database right 2019. Ordnance Survey 100022021. UKHO Data © British Crown Copyright. All rights reserved. Permission Number Defra 012019.001. This product has been derived in part from material obtained from the UK Hydrographic Office with the permission of the Controller of Her Majesty's Stationery Office and UK Hydrographic Office (www.ukho.gov.uk). Map produced by Natural England 2019. Reference: Theme ID:UKMCZ0008-10 Map Projection: British National Grid



Isles of Scilly Sites

Tean MCZ

- Marine Conservation Zone
- Regional MCZ Project Area
- 12nM Territorial Seas Limit
- Sea
- Land

Features designated in 2013

- Intertidal under boulder communities
- Moderate energy intertidal rock (A1.2)
- Intertidal coarse sediment (A2.1)
- Intertidal sand and muddy sand (A2.2)

Contains information from the Ordnance Survey © Crown Copyright and database right 2019. Ordnance Survey 100022021. UKHO Data © British Crown Copyright. All rights reserved. Permission Number Defra 012019.001. This product has been derived in part from material obtained from the UK Hydrographic Office with the permission of the Controller of Her Majesty's Stationery Office and UK Hydrographic Office (www.ukho.gov.uk). Map produced by Natural England 2019. Reference: Theme ID:UKMCZ0008-11 Map Projection: British National Grid