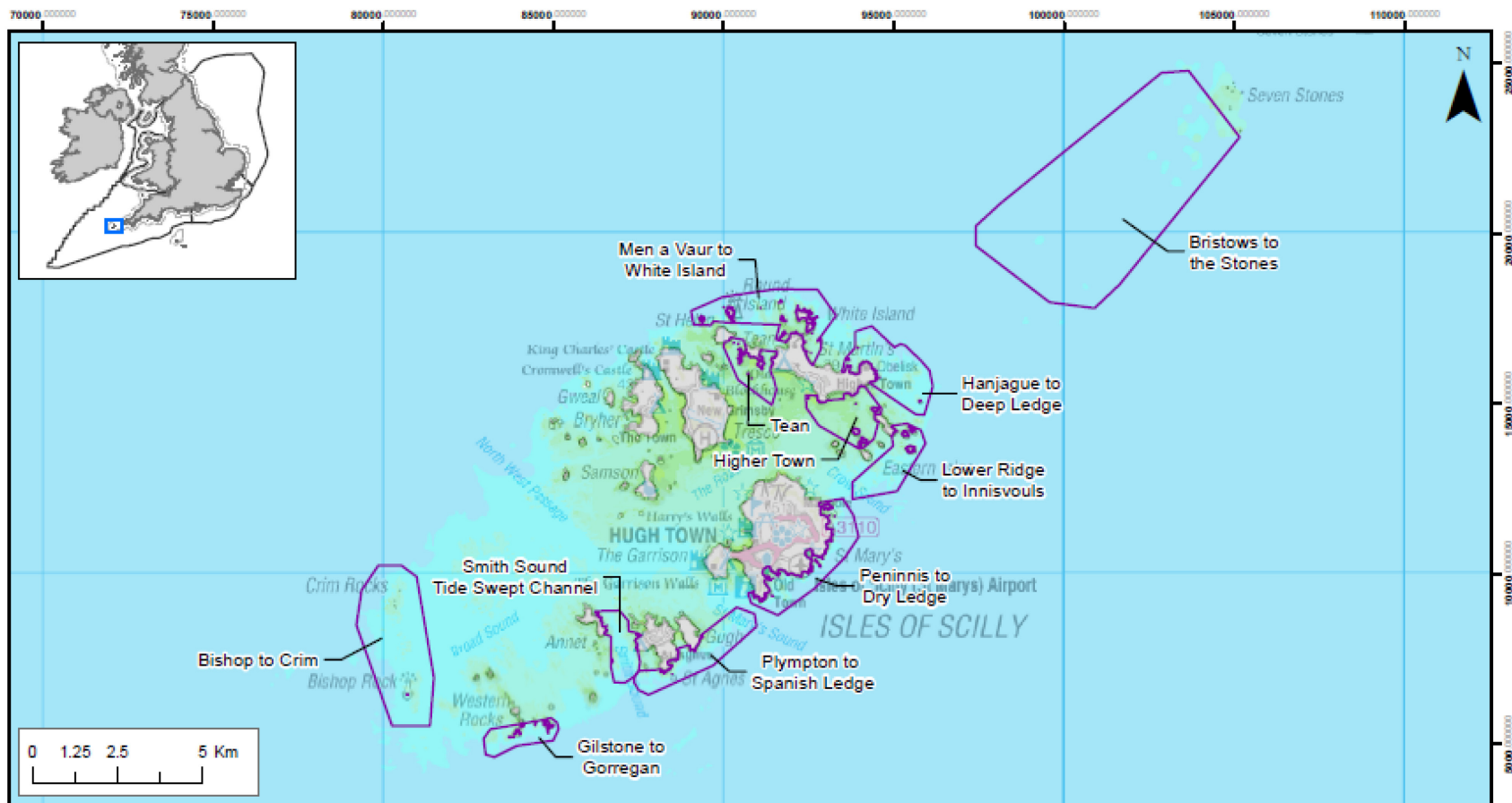


Department for Environment, Food and Rural Affairs





Isles of Scilly MCZ

Boundary Maps












May 2019



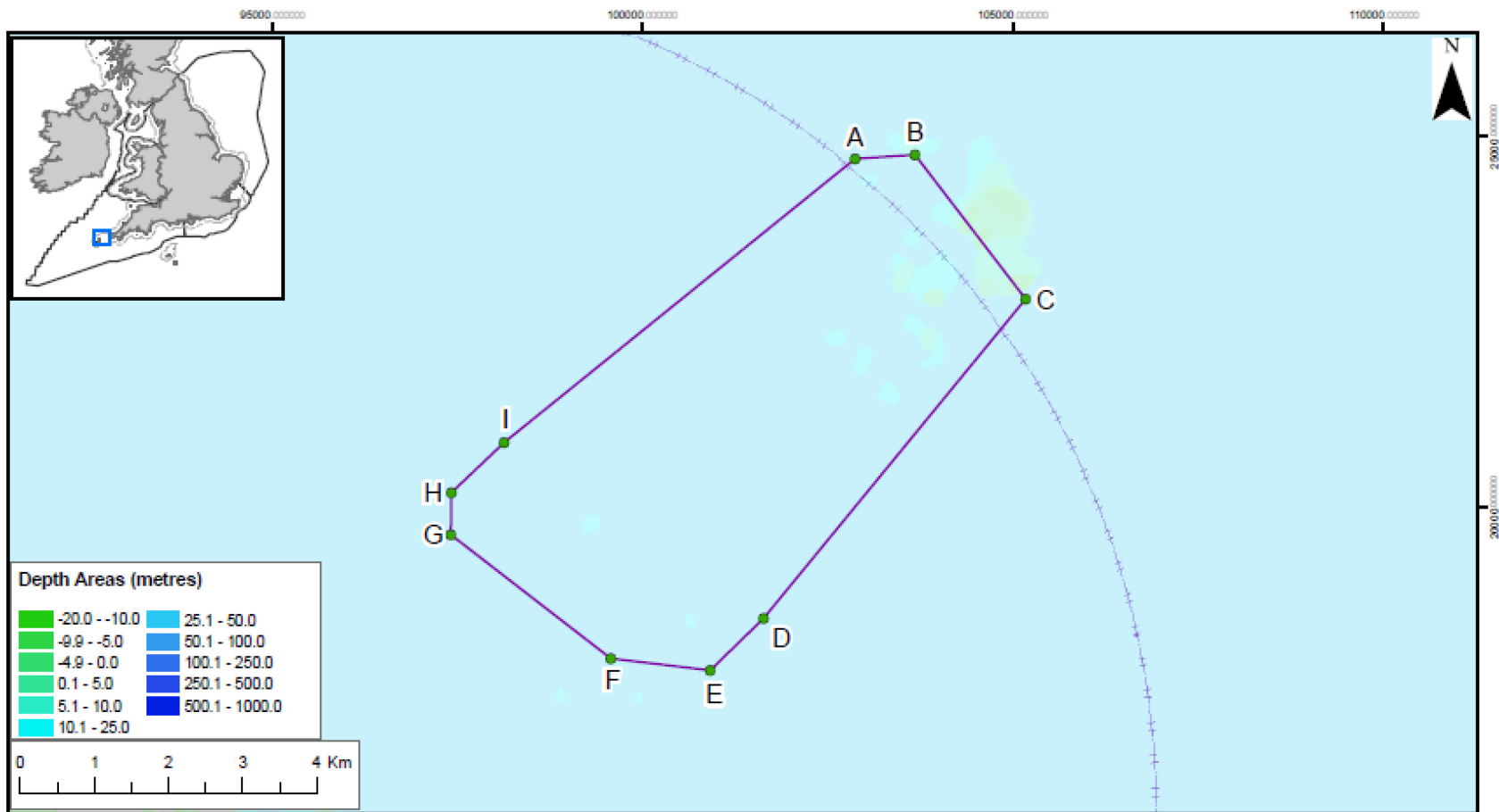
Isles of Scilly Sites MCZs Boundary Overview

-  Marine Conservation Zone
-  Regional MCZ project area
-  12nM Territorial Seas Limit
-  Land

Depth Areas (m)

- | | |
|---|--|
|  -20.0 - -10.0 |  25.1 - 50.0 |
|  -9.9 - -5.0 |  50.1 - 100.0 |
|  -4.9 - 0.0 |  100.1 - 250.0 |
|  0.1 - 5.0 |  250.1 - 500.0 |
|  5.1 - 10.0 |  500.1 - 1000.0 |
|  10.1 - 25.0 | |

Contains information from the Ordnance Survey
 © Crown Copyright and database right 2013.
 Ordnance Survey 100022021. UKHO Data
 © British Crown Copyright. All rights reserved.
 Permission Number Defra012013.001. This
 product has been derived in part from material
 obtained from the UK Hydrographic Office with
 the permission of the Controller of Her Majesty's
 Stationery Office and UK Hydrographic Office
 (www.ukho.gov.uk). Map produced by
 Natural England 2013.
 Reference: Theme ID: 1477656
 Map Projection: British National Grid

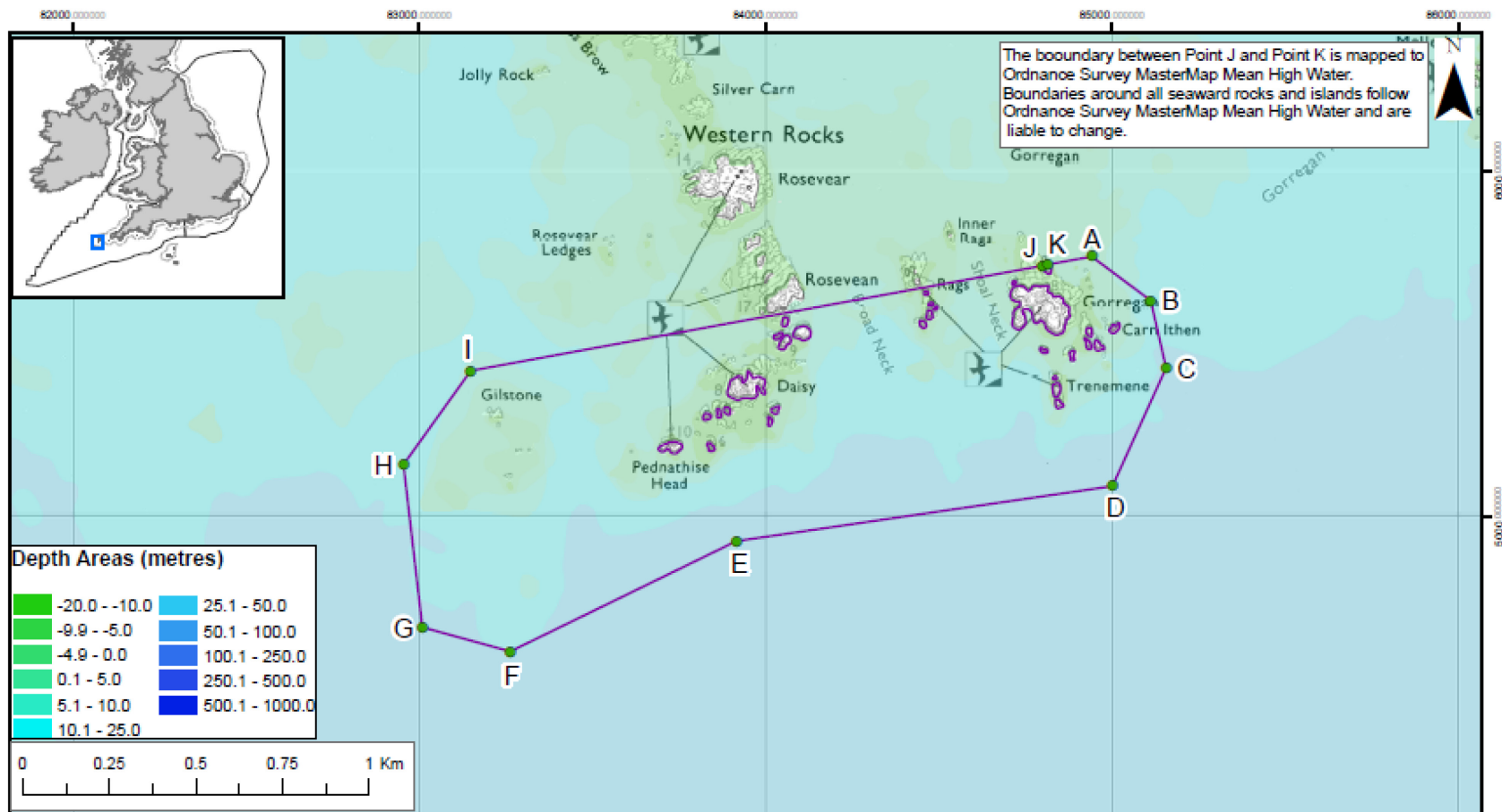


Isles of Scilly MCZs - Bristows To The Stones Boundary

- Marine Conservation Zone
- - - - - 6nm Fisheries Limit (1983)
- MCZ boundary co-ordinates
- 12nm Territorial Seas Limit
- Land

Point	Lat	Long	Point	Lat	Long
A	50°2' 53.214" N	6°9' 7.476" W	F	49°59' 9.360" N	6°11' 33.668" W
B	50°2' 56.196" N	6°8' 26.916" W	G	49°59' 59.342" N	6°13' 26.225" W
C	50°1' 56.035" N	6°7' 6.463" W	H	50°0' 17.874" N	6°13' 27.648" W
D	49°59' 30.542" N	6°9' 51.736" W	I	50°0' 40.908" N	6°12' 53.901" W
E	49°59' 6.594" N	6°10' 26.075" W			

Contains information from the Ordnance Survey © Crown Copyright and database right 2013. Ordnance Survey 100022021. UKHO Data © British Crown Copyright. All rights reserved. Permission Number Defra012013.001. This product has been derived in part from material obtained from the UK Hydrographic Office with the permission of the Controller of Her Majesty's Stationary Office and UK Hydrographic Office (www.ukho.gov.uk). Map produced by Natural England 2013. Reference: Theme ID: 1477656 Map Projection: British National Grid

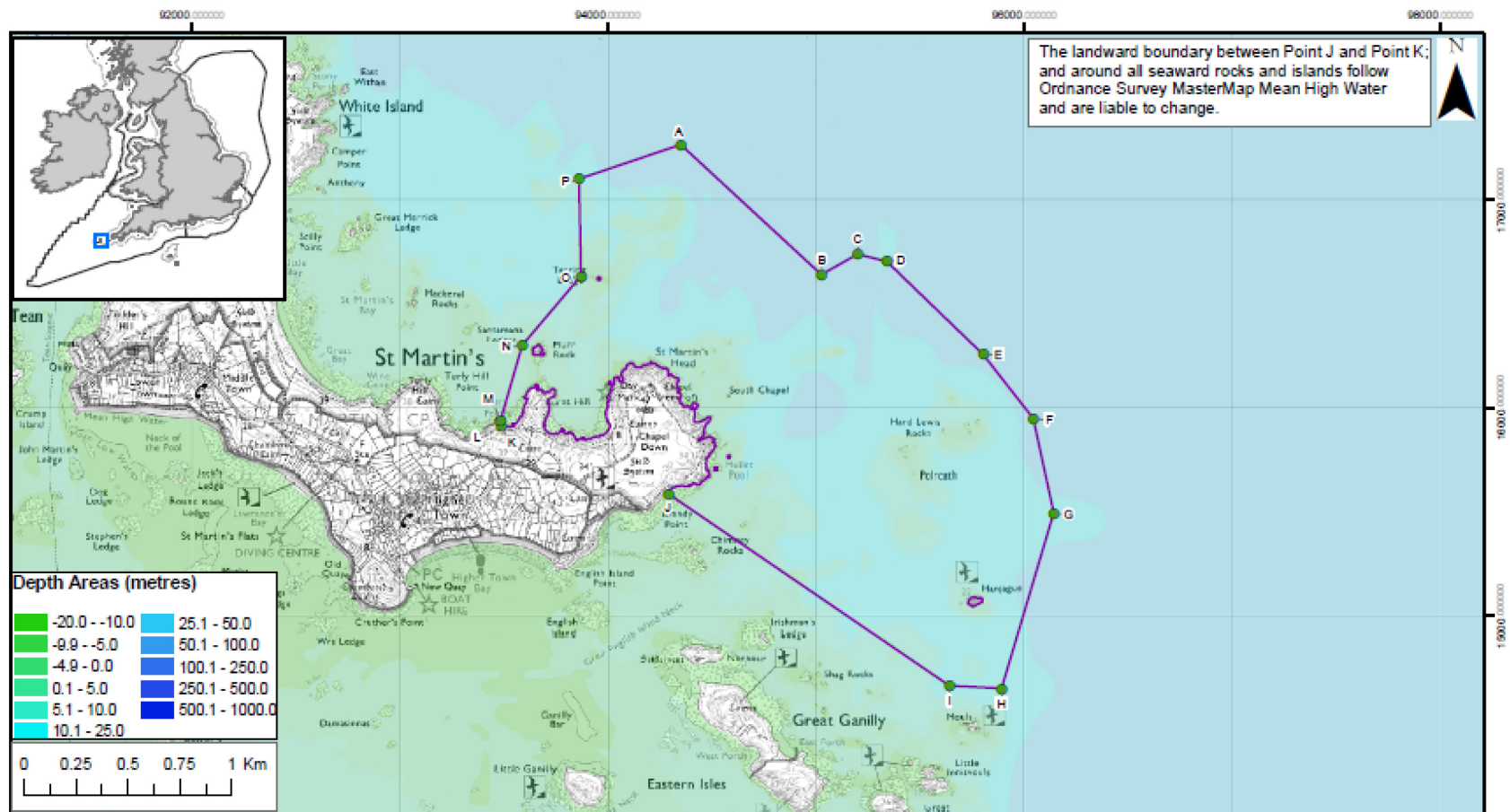


Isles of Scilly MCZs - Gilstone to Gorregan Boundary

- Marine Conservation Zone
- MCZ boundary co-ordinates
- 12nm Territorial Seas Limit
- Land

Point	Lat	Long	Point	Lat	Long
A	49°52' 8.125" N	6°23' 10.221" W	G	49°51' 29.915" N	6°24' 43.523" W
B	49°52' 4.337" N	6°23' 1.344" W	H	49°51' 44.964" N	6°24' 47.668" W
C	49°51' 58.152" N	6°22' 58.553" W	I	49°51' 54.010" N	6°24' 38.843" W
D	49°51' 46.857" N	6°23' 5.263" W	J	49° 52' 7.006" N	6° 23' 17.260" W
E	49°51' 39.651" N	6°23' 59.002" W	K	49° 52' 7.131" N	6° 23' 16.489" W
F	49°51' 28.113" N	6°24' 30.689" W			

Contains information from the Ordnance Survey © Crown Copyright and database right 2013. Ordnance Survey 100022021. UKHO Data © British Crown Copyright. All rights reserved. Permission Number Defra012013.001. This product has been derived in part from material obtained from the UK Hydrographic Office with the permission of the Controller of Her Majesty's Stationery Office and UK Hydrographic Office (www.ukho.gov.uk). Map produced by Natural England 2013. Reference: Theme ID: 1477656 Map Projection: British National Grid

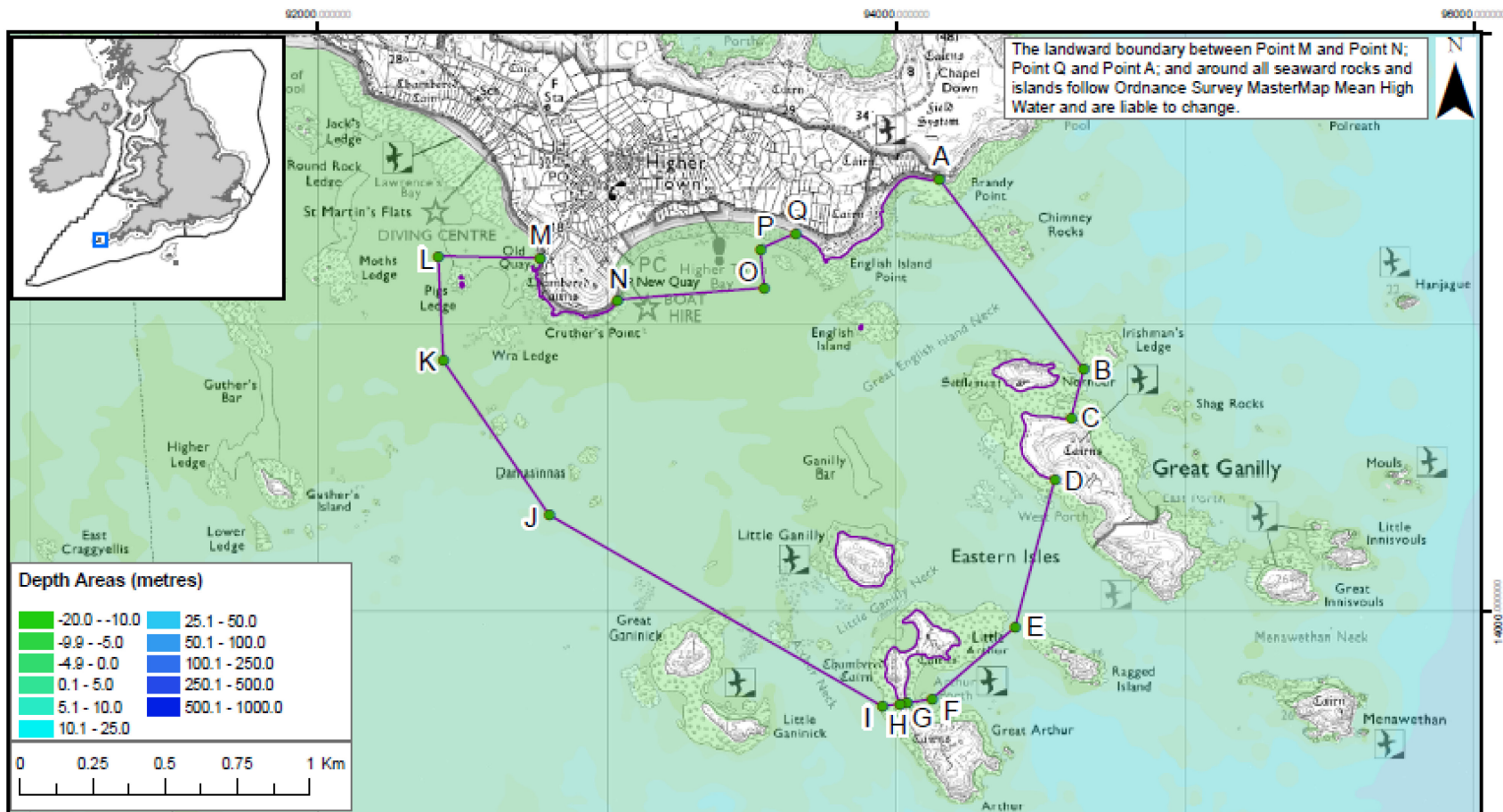


Isles of Scilly MCZs - Hanjague to Deep Ledge Boundary

- Marine Conservation Zone
- MCZ boundary co-ordinates
- 12nM Territorial Seas Limit

Point	Lat	Long	Point	Lat	Long
A	49° 58' 37.509" N	8° 15' 53.000" W	I	49° 57' 15.919" N	8° 14' 40.874" W
B	49° 58' 18.636" N	8° 15' 17.421" W	J	49° 57' 43.227" N	8° 15' 51.111" W
C	49° 58' 22.107" N	8° 15' 8.929" W	K	49° 57' 52.343" N	8° 16' 32.353" W
D	49° 58' 21.196" N	8° 15' 1.864" W	L	49° 57' 53.033" N	8° 16' 32.738" W
E	49° 58' 7.645" N	8° 14' 37.359" W	M	49° 57' 53.102" N	8° 16' 32.601" W
F	49° 57' 58.114" N	8° 14' 24.457" W	N	49° 58' 4.963" N	8° 16' 28.395" W
G	49° 57' 43.663" N	8° 14' 18.107" W	O	49° 58' 16.288" N	8° 16' 15.154" W
H	49° 57' 15.971" N	8° 14' 28.275" W	P	49° 58' 31.344" N	8° 16' 16.916" W

Contains information from the Ordnance Survey © Crown Copyright and database right 2013. Ordnance Survey 100022021. UKHO Data © British Crown Copyright. All rights reserved. Permission Number Defra012013.001. This product has been derived in part from material obtained from the UK Hydrographic Office with the permission of the Controller of Her Majesty's Stationery Office and UK Hydrographic Office (www.ukho.gov.uk). Map produced by Natural England 2013. Reference: Theme ID: 1477656 Map Projection: British National Grid

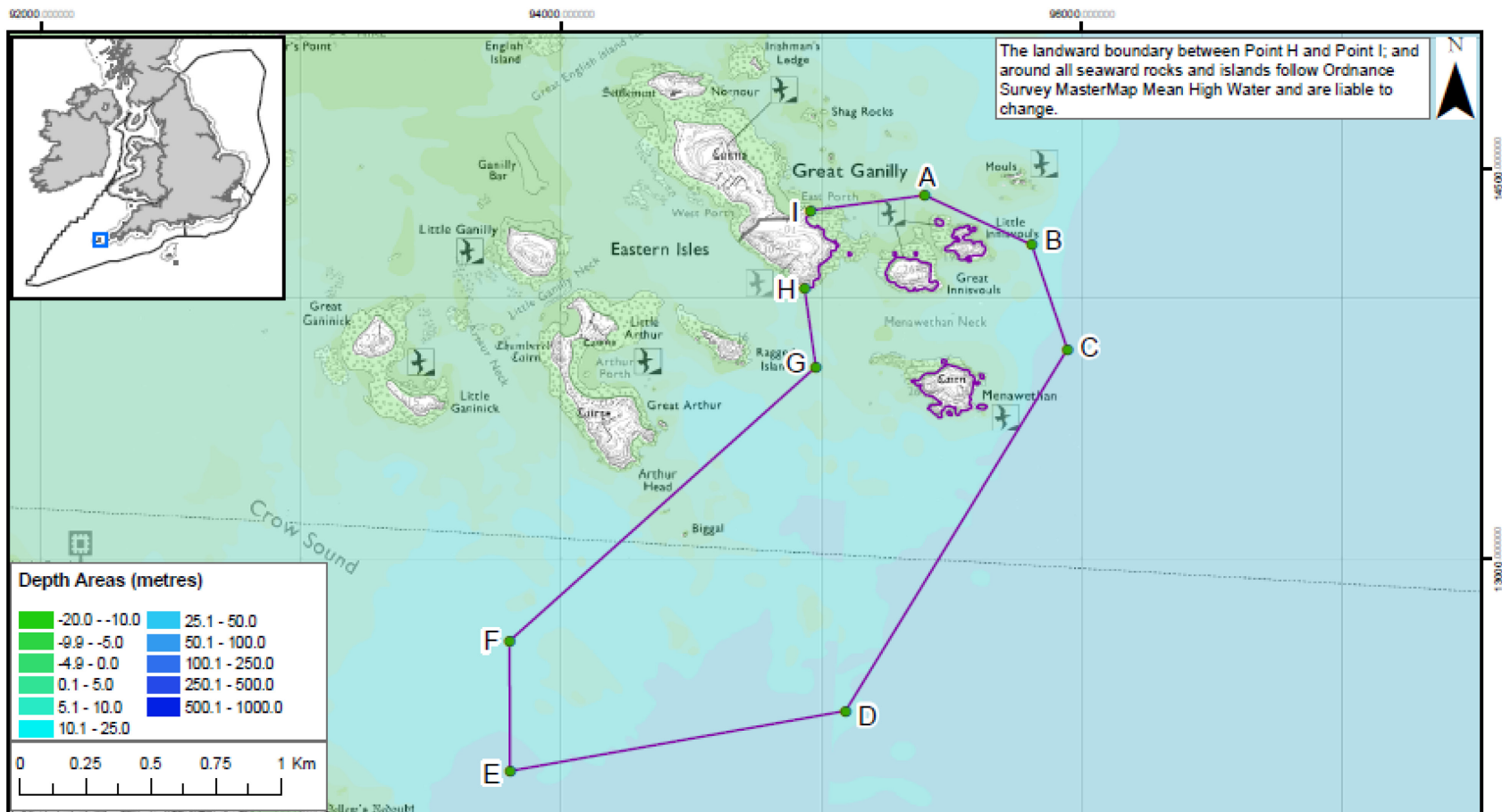


Isles of Scilly MCZs - Higher Town Boundary

- Marine Conservation Zone
- MCZ boundary co-ordinates
- 12nM Territorial Seas Limit
- Land

Point	Lat	Long	Point	Lat	Long
A	49°57' 40.011" N	8°15' 58.081" W	J	49°57' 0.044" N	8°17' 2.244" W
B	49°57' 19.668" N	8°15' 31.074" W	K	49°57' 16.534" N	8°17' 22.078" W
C	49°57' 14.215" N	8°15' 32.818" W	L	49°57' 28.203" N	8°17' 24.091" W
D	49°57' 7.119" N	8°15' 35.088" W	M	49°57' 28.661" N	8°17' 6.458" W
E	49°58' 50.470" N	8°15' 40.412" W	N	49°57' 24.519" N	8°16' 52.578" W
F	49°58' 41.888" N	8°15' 54.158" W	O	49°57' 26.741" N	8°16' 27.212" W
G	49°58' 41.302" N	8°15' 58.436" W	P	49°57' 31.113" N	8°16' 28.335" W
H	49°58' 41.132" N	8°15' 59.678" W	Q	49°57' 33.058" N	8°16' 22.321" W
I	49°58' 40.727" N	8°16' 2.634" W			

Contains information from the Ordnance Survey © Crown Copyright and database right 2013. Ordnance Survey 100022021. UKHO Data © British Crown Copyright. All rights reserved. Permission Number Defra012013.001. This product has been derived in part from material obtained from the UK Hydrographic Office with the permission of the Controller of Her Majesty's Stationery Office and UK Hydrographic Office (www.ukho.gov.uk). Map produced by Natural England 2013. Reference: Theme ID: 1477656 Map Projection: British National Grid

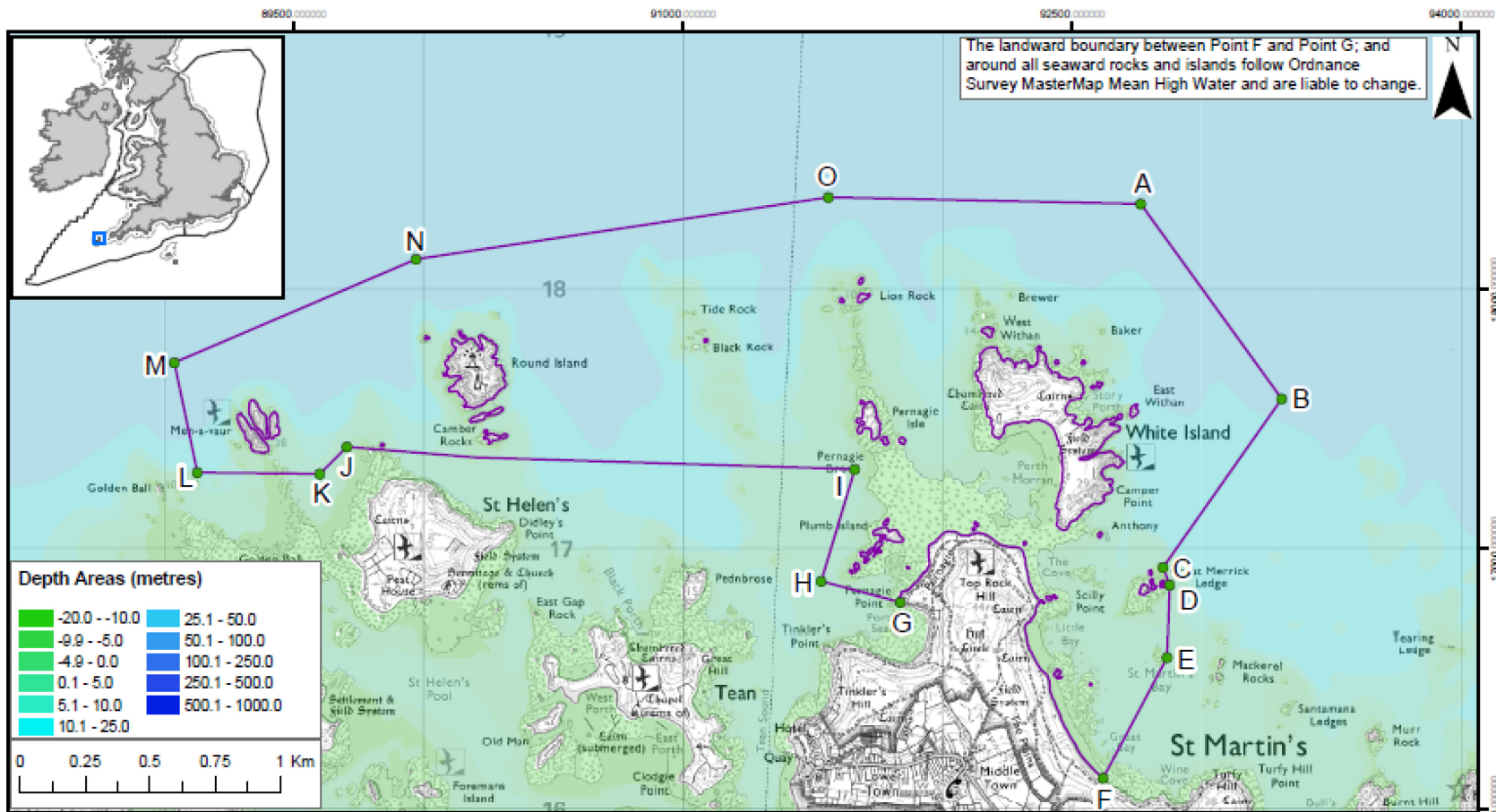


Isles of Scilly MCZs - Lower Ridge To Innisvouls Boundary

- Marine Conservation Zone
- MCZ boundary co-ordinates
- 12nM Territorial Seas Limit
- Land

Point	Lat	Long	Point	Lat	Long
A	49°57' 6.833" N	8°14' 52.421" W	F	49°56' 8.544" N	8°16' 7.518" W
B	49°57' 1.480" N	8°14' 31.400" W	G	49°56' 44.741" N	8°15' 11.592" W
C	49°56' 48.772" N	8°14' 23.411" W	H	49°56' 54.367" N	8°15' 14.554" W
D	49°56' 2.285" N	8°15' 2.121" W	I	49°57' 4.100" N	8°15' 14.261" W
E	49°55' 52.436" N	8°16' 5.878" W			

Contains information from the Ordnance Survey © Crown Copyright and database right 2013. Ordnance Survey 100022021. UKHO Data © British Crown Copyright. All rights reserved. Permission Number Defra012013.001. This product has been derived in part from material obtained from the UK Hydrographic Office with the permission of the Controller of Her Majesty's Stationery Office and UK Hydrographic Office (www.ukho.gov.uk). Map produced by Natural England 2013. Reference: Theme ID: 1477656 Map Projection: British National Grid



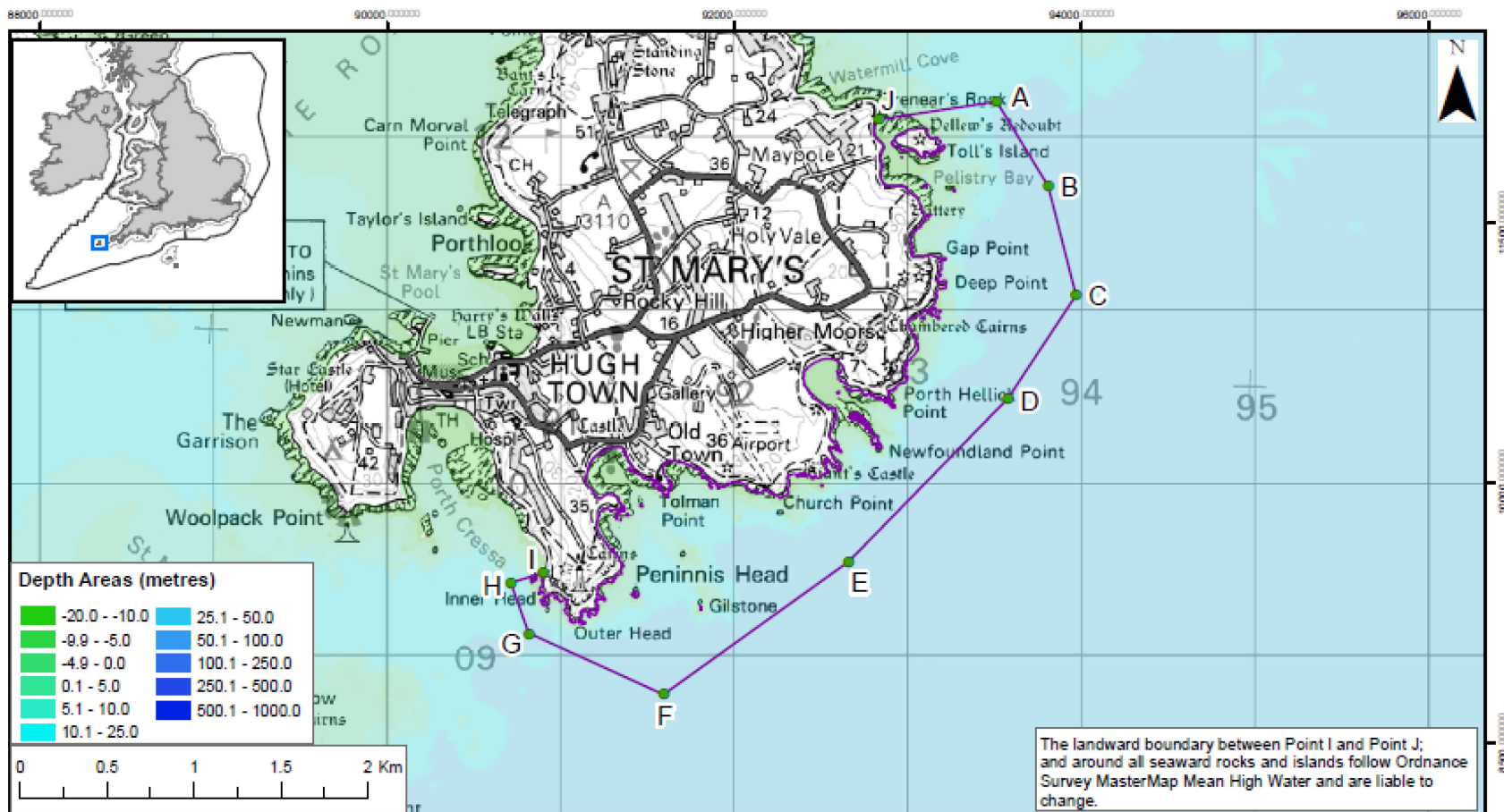
Isles of Scilly MCZs - Men a Vaur To White Island

Boundary

- Marine Conservation Zone
- MCZ boundary co-ordinates
- 12nM Territorial Seas Limit
- Land

Point	Lat	Long	Point	Lat	Long
A	49°58' 8.935" N	6°17' 15.474" W	I	49°58' 33.893" N	6°18' 7.764" W
B	49°58' 45.715" N	6°18' 46.088" W	J	49°58' 33.039" N	6°19' 45.964" W
C	49°58' 23.837" N	6°17' 7.201" W	K	49°58' 29.487" N	6°19' 50.895" W
D	49°58' 21.688" N	6°17' 5.714" W	L	49°58' 28.754" N	6°20' 14.459" W
E	49°58' 12.632" N	6°17' 5.431" W	M	49°58' 42.244" N	6°20' 20.141" W
F	49°57' 57.187" N	6°17' 18.425" W	N	49°58' 56.864" N	6°19' 34.626" W
G	49°58' 17.687" N	6°17' 57.488" W	O	49°59' 7.567" N	6°18' 15.859" W
H	49°58' 19.741" N	6°18' 12.897" W			

Contains information from the Ordnance Survey © Crown Copyright and database right 2013. Ordnance Survey 100022021. UKHO Data © British Crown Copyright. All rights reserved. Permission Number Defra012013.001. This product has been derived in part from material obtained from the UK Hydrographic Office with the permission of the Controller of Her Majesty's Stationery Office and UK Hydrographic Office (www.ukho.gov.uk). Map produced by Natural England 2013. Reference: Theme ID: 1477656 Map Projection: British National Grid

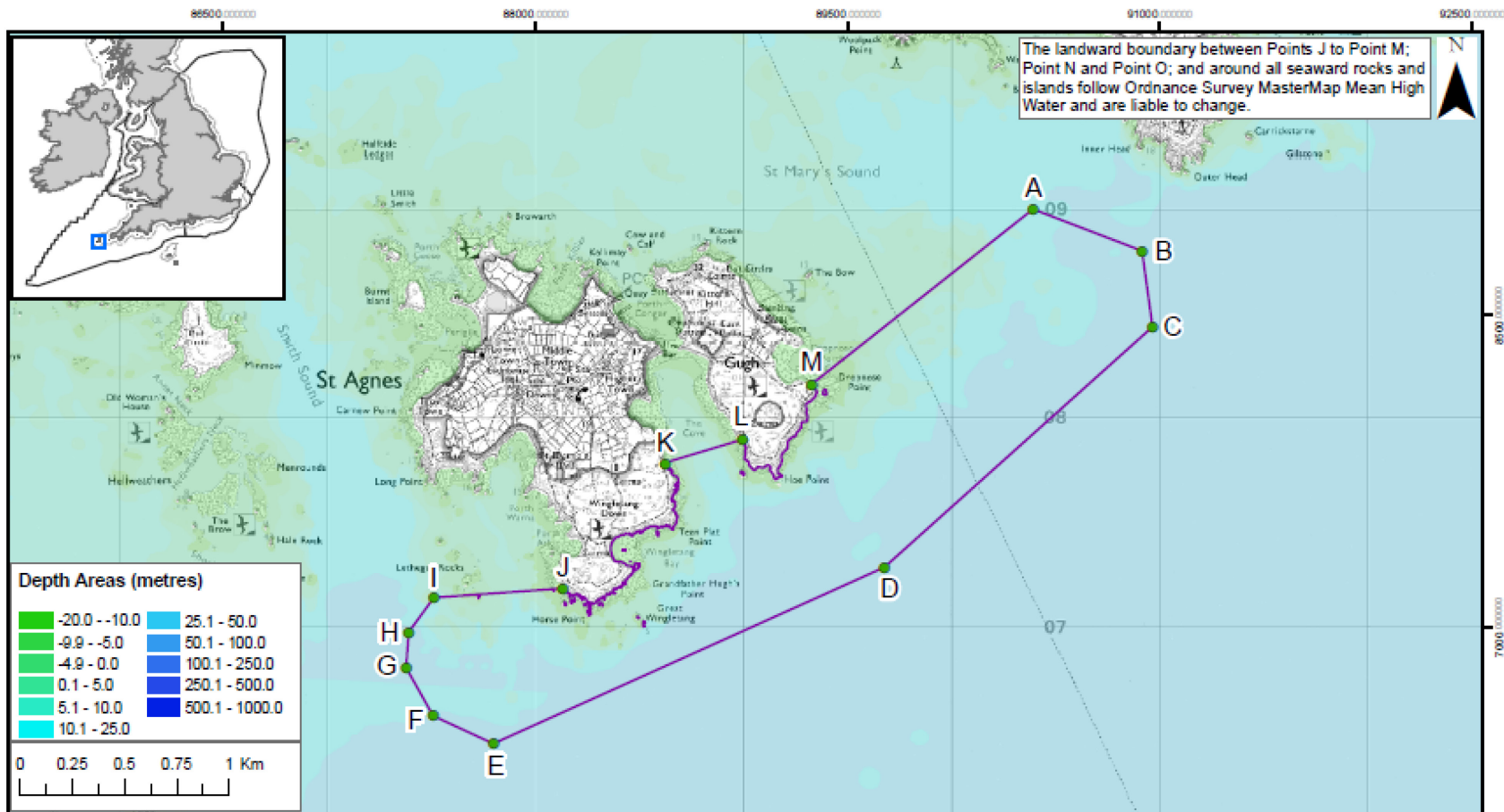


Isles of Scilly MCZs - Peninnis To Dry Ledge Boundary

- Marine Conservation Zone
- MCZ boundary co-ordinates
- 12nM Territorial Seas Limit
- Land

Point	Lat	Long	Point	Lat	Long
A	49°55' 52.169" N	8°16' 20.422" W	F	49°53' 58.314" N	8°17' 46.815" W
B	49°55' 36.957" N	8°16' 4.243" W	G	49°54' 8.230" N	8°18' 28.406" W
C	49°55' 16.995" N	8°15' 54.368" W	H	49°54' 17.493" N	8°18' 32.434" W
D	49°54' 57.056" N	8°16' 12.256" W	I	49°54' 19.634" N	8°18' 23.253" W
E	49°54' 25.031" N	8°16' 55.489" W	J	49°55' 47.571" N	8°16' 53.949" W

Contains information from the Ordnance Survey
 © Crown Copyright and database right 2013.
 Ordnance Survey 100022021. UKHO Data
 © British Crown Copyright. All rights reserved.
 Permission Number Defra012013.001. This
 product has been derived in part from material
 obtained from the UK Hydrographic Office with
 the permission of the Controller of Her Majesty's
 Stationery Office and UK Hydrographic Office
 (www.ukho.gov.uk). Map produced by
 Natural England 2013.
 Reference: Theme ID: 1477656
 Map Projection: British National Grid

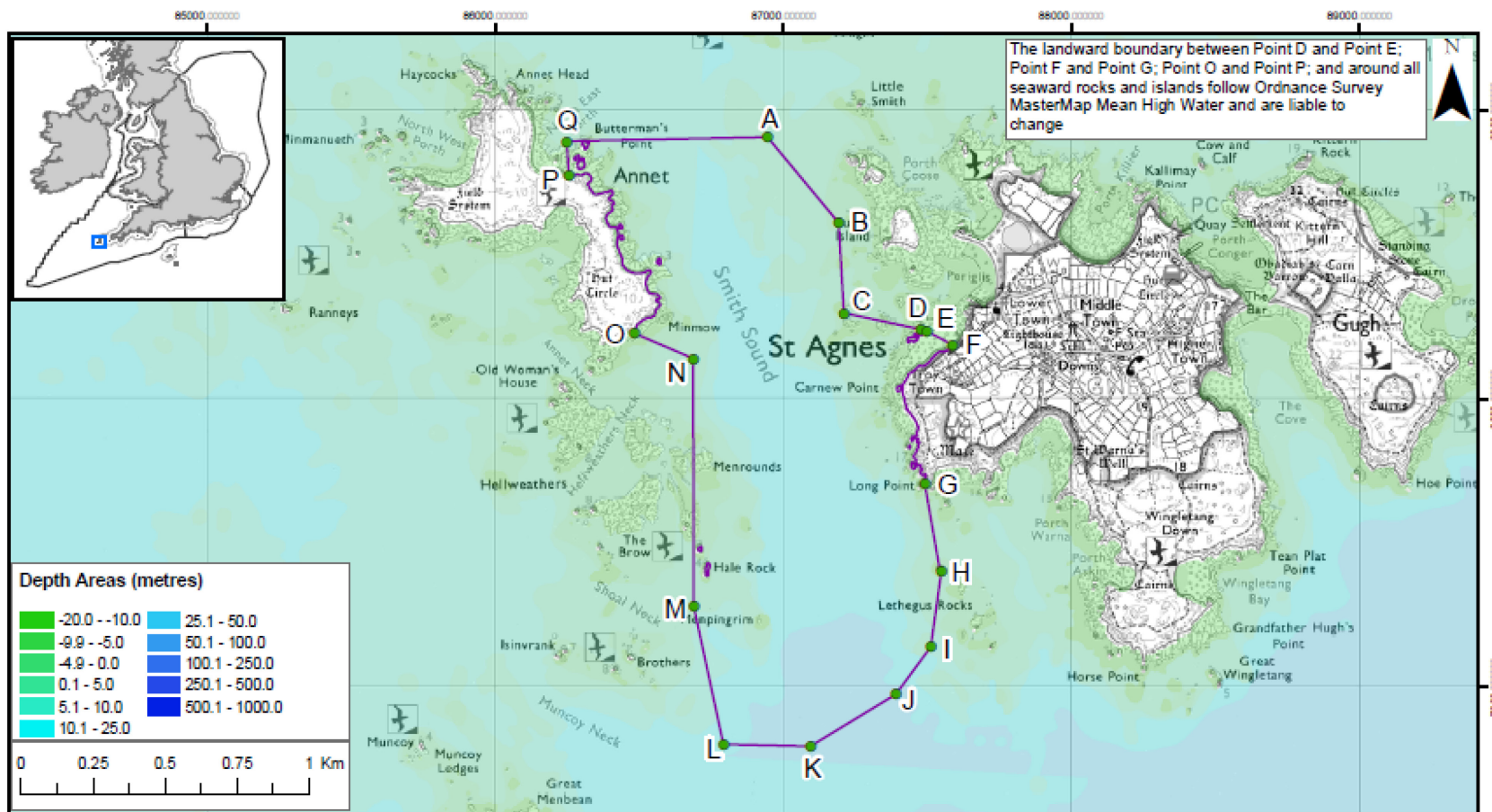


Isles of Scilly MCZs - Plympton To Spanish Ledge Boundary

- Marine Conservation Zone
- MCZ boundary co-ordinates
- 12nm Territorial Seas Limit
- Land

Point	Lat	Long	Point	Lat	Long
A	49°54' 3.500" N	8°18' 47.471" W	H	49°52' 52.282" N	8°21' 11.409" W
B	49°53' 58.008" N	8°18' 20.709" W	I	49°52' 57.872" N	8°21' 5.831" W
C	49°53' 46.363" N	8°18' 17.109" W	J	49°53' 0.494" N	8°20' 35.070" W
D	49°53' 6.678" N	8°19' 18.103" W	K	49°53' 20.790" N	8°20' 12.248" W
E	49°52' 35.769" N	8°20' 49.582" W	L	49°53' 25.216" N	8°19' 54.029" W
F	49°52' 39.563" N	8°21' 4.334" W	M	49°53' 34.339" N	8°19' 38.209" W
G	49°52' 46.788" N	8°21' 11.512" W			

Contains information from the Ordnance Survey
 © Crown Copyright and database right 2013.
 Ordnance Survey 100022021. UKHO Data
 © British Crown Copyright. All rights reserved.
 Permission Number Defra012013.001. This
 product has been derived in part from material
 obtained from the UK Hydrographic Office with
 the permission of the Controller of Her Majesty's
 Stationary Office and UK Hydrographic Office
 (www.ukho.gov.uk). Map produced by
 Natural England 2013.
 Reference: Theme ID: 1477656
 Map Projection: British National Grid

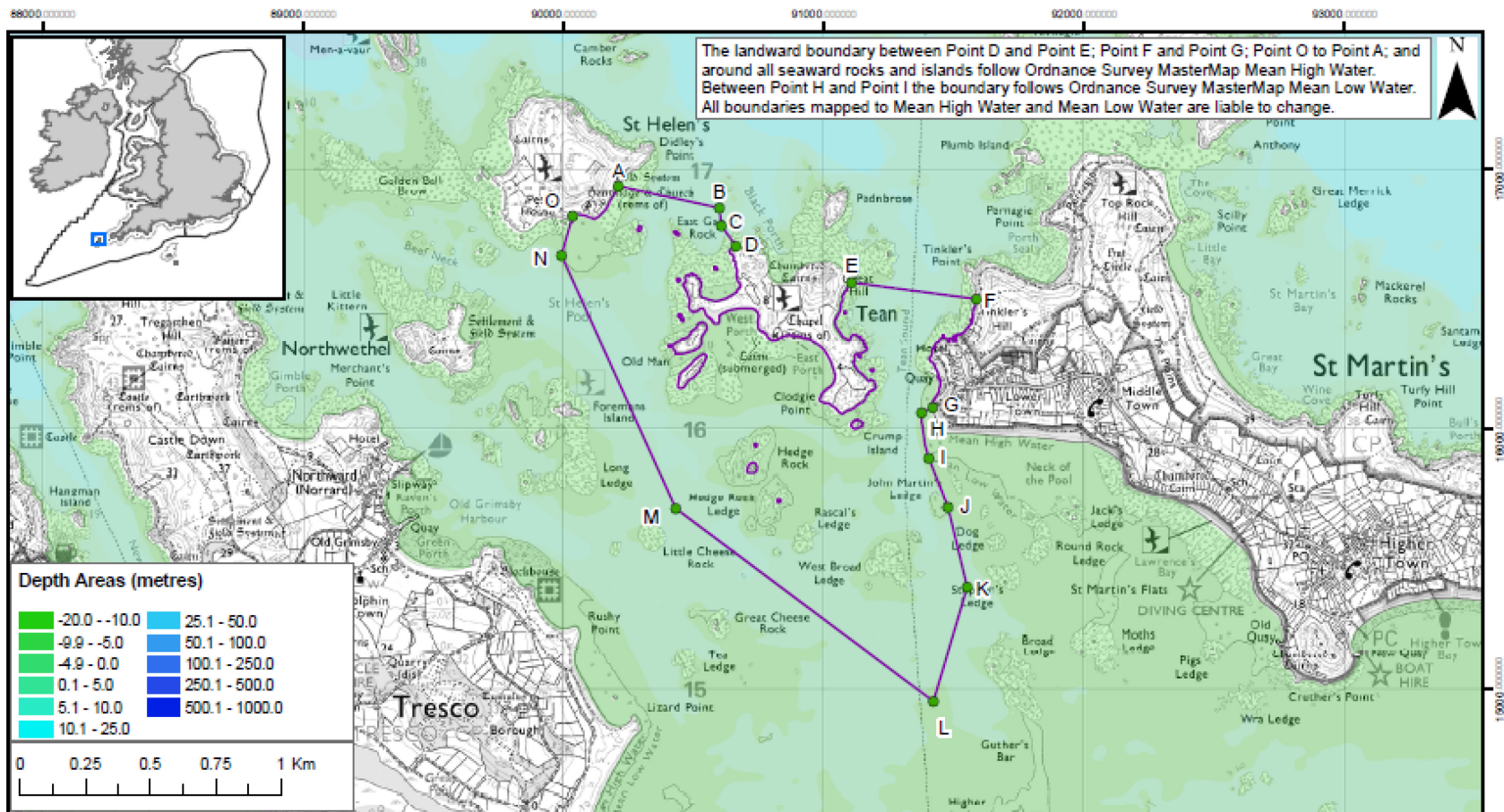


Isles of Scilly MCZs - Smith Sound Tide Swept Channel Boundary

- Marine Conservation Zone
- MCZ boundary co-ordinates
- 12nM Territorial Seas Limit
- Land

Point	Lat	Long	Point	Lat	Long
A	49°53' 53.838" N	8°21' 39.280" W	J	49°52' 52.282" N	8°21' 11.409" W
B	49°53' 44.722" N	8°21' 28.041" W	K	49°52' 45.947" N	8°21' 25.732" W
C	49°53' 34.670" N	8°21' 24.219" W	L	49°52' 45.574" N	8°21' 40.800" W
D	49°53' 33.342" N	8°21' 10.698" W	M	49°53' 0.805" N	8°21' 47.335" W
E	49°53' 33.156" N	8°21' 9.734" W	N	49°53' 28.590" N	8°21' 49.961" W
F	49°53' 31.844" N	8°21' 5.072" W	O	49°53' 30.991" N	8°22' 0.348" W
G	49°53' 16.004" N	8°21' 8.547" W	P	49°53' 48.341" N	8°22' 13.360" W
H	49°53' 6.294" N	8°21' 4.772" W	Q	49°53' 52.089" N	8°22' 14.117" W
I	49°52' 57.872" N	8°21' 5.831" W			

Contains information from the Ordnance Survey © Crown Copyright and database right 2013. Ordnance Survey 100022021. UKHO Data © British Crown Copyright. All rights reserved. Permission Number Defra012013.001. This product has been derived in part from material obtained from the UK Hydrographic Office with the permission of the Controller of Her Majesty's Stationery Office and UK Hydrographic Office (www.ukho.gov.uk). Map produced by Natural England 2013. Reference: Theme ID: 1477656 Map Projection: British National Grid



Isles of Scilly MCZs - Tean Boundary

- Marine Conservation Zone
- MCZ boundary co-ordinates
- 12NM Territorial Seas Limit
- Land

Point	Lat	Long	Point	Lat	Long
A	49° 58' 19.074" N	6° 19' 19.240" W	I	49° 57' 47.523" N	6° 18' 16.591" W
B	49° 58' 17.090" N	6° 18' 59.569" W	J	49° 57' 41.660" N	6° 18' 12.390" W
C	49° 58' 14.933" N	6° 18' 59.021" W	K	49° 57' 31.816" N	6° 18' 07.741" W
D	49° 58' 12.488" N	6° 18' 56.063" W	L	49° 57' 17.413" N	6° 18' 13.026" W
E	49° 58' 08.790" N	6° 18' 33.371" W	M	49° 57' 39.501" N	6° 19' 04.683" W
F	49° 58' 07.655" N	6° 18' 09.226" W	N	49° 58' 10.092" N	6° 19' 29.441" W
G	49° 57' 53.887" N	6° 18' 16.414" W	O	49° 58' 15.062" N	6° 19' 27.725" W
H	49° 57' 53.170" N	6° 18' 18.393" W			

Contains information from the Ordnance Survey © Crown Copyright and database right 2013. Ordnance Survey 100022021. UKHO Data © British Crown Copyright. All rights reserved. Permission Number Defra012013.001. This product has been derived in part from material obtained from the UK Hydrographic Office with the permission of the Controller of Her Majesty's Stationery Office and UK Hydrographic Office (www.ukho.gov.uk). Map produced by Natural England 2013. Reference: Theme ID: 1477656 Map Projection: British National Grid