

ACCIDENT

Aircraft Type and Registration:	Replica WAR FW190, G-CCFW
No & Type of Engines:	1 Continental Motors Corp O-200-A
Year of Manufacture:	2003 (Serial no: PFA 081-12729)
Date & Time (UTC):	12 July 2020 at 1350 hrs
Location:	Lower Upham Farm Airstrip, Marlborough, Wiltshire
Type of Flight:	Private
Persons on Board:	Crew - 1 Passengers - None
Injuries:	Crew - 1 (Serious) Passengers - N/A
Nature of Damage:	Extensive damage to propeller, engine, fuselage, fin and rudder
Commander's Licence:	National Private Pilot's Licence
Commander's Age:	82 years
Commander's Flying Experience:	12,617 hours (of which 413 were on type) Last 90 days - 4 hours Last 28 days - 2 hours
Information Source:	Aircraft Accident Report Form submitted by the pilot

Synopsis

The aircraft landed in a field adjacent to the grass airstrip. The aircraft pitched over after landing, trapping the pilot. The aircraft was extensively damaged and the pilot suffered serious injuries.

History of the flight

The pilot was flying G-CCFW, a Replica WAR FW190. The skies were clear with bright sunshine and light winds from the southwest. At around 1200 hrs, the pilot returned to the airstrip to land on its southerly runway. On landing, the aircraft travelled a short distance when it "stopped violently" and pitched over onto its back, trapping the pilot. The pilot was removed from the aircraft by emergency services and had suffered serious injuries. The aircraft was damaged extensively and deemed uneconomic to repair.

Analysis

The aircraft had landed in crop to the left of the grass runway. He reported that he mistook the unmarked grass runway to be part of the crop in the adjacent field to the right of the runway owing to its similarity in colour (Figure 1). Instead, he made an approach to and landed in the field to the left of the runway, where tractor marks and the edge of the grass airstrip had created the appearance of a 'false' runway similar in size and shape. The sun

overhead may have reduced the contrast between the grass strip and the crops, contributing to the reduced conspicuity of the grass airstrip.

The pilot reported that the runway has since been marked out with white chalk lines.

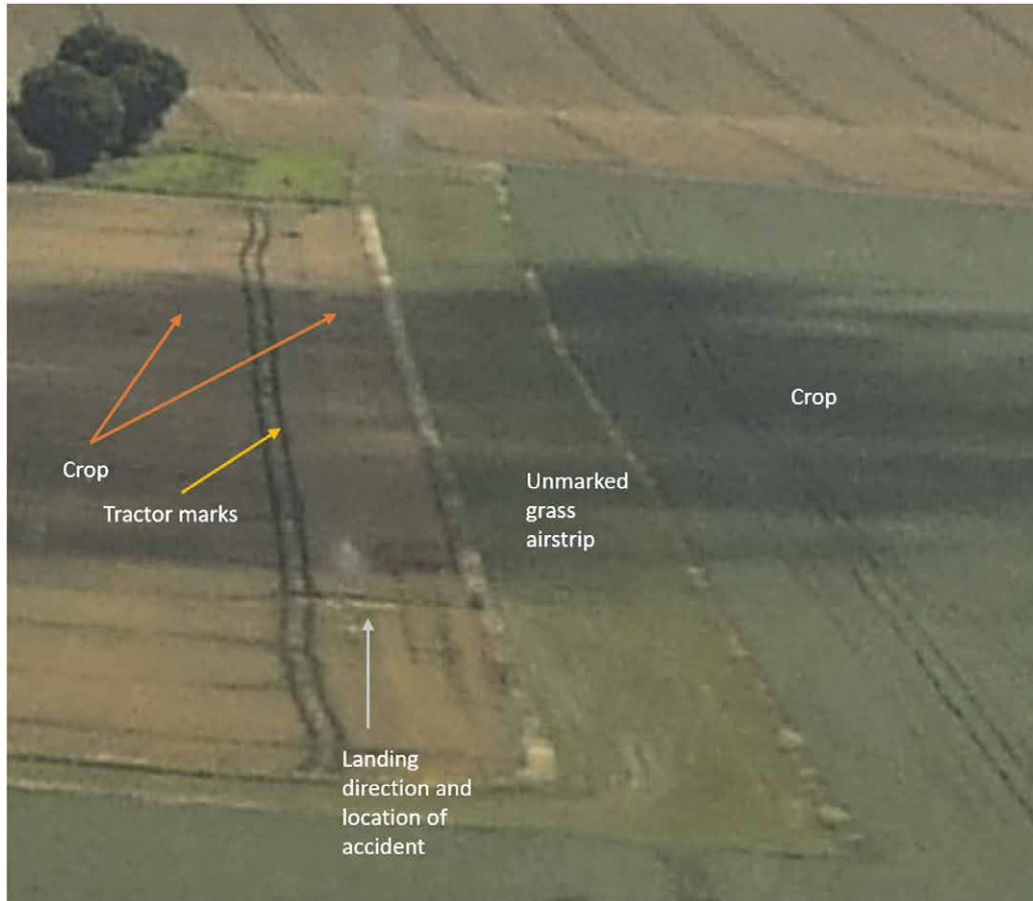


Figure 1

The approach to the grass airstrip;
(picture taken the following day)