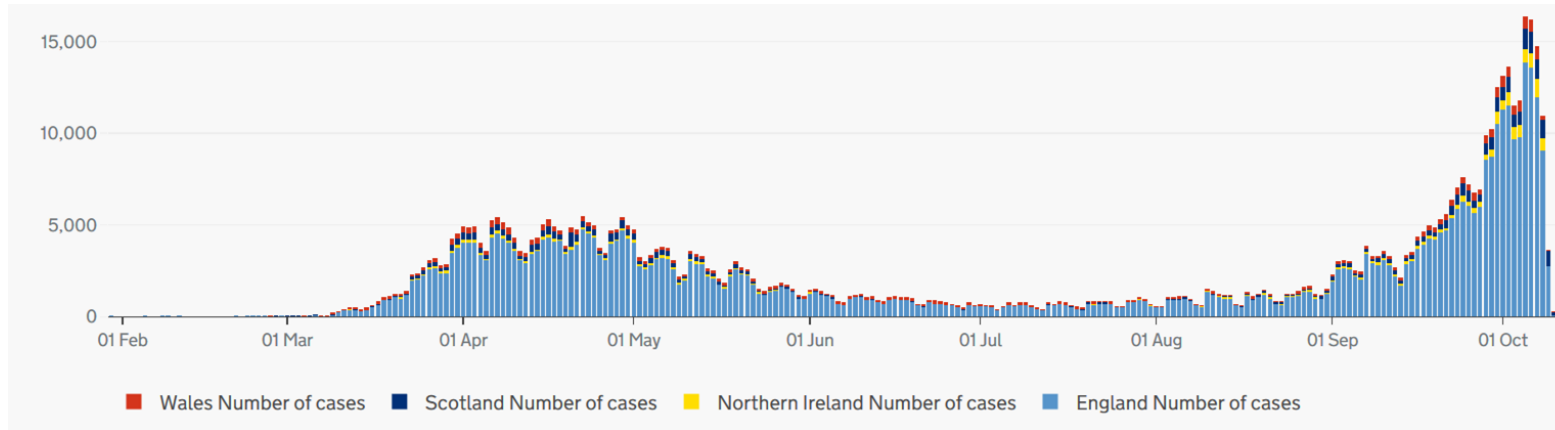
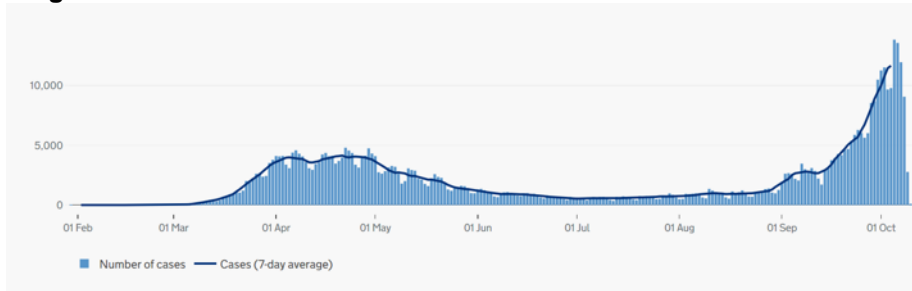


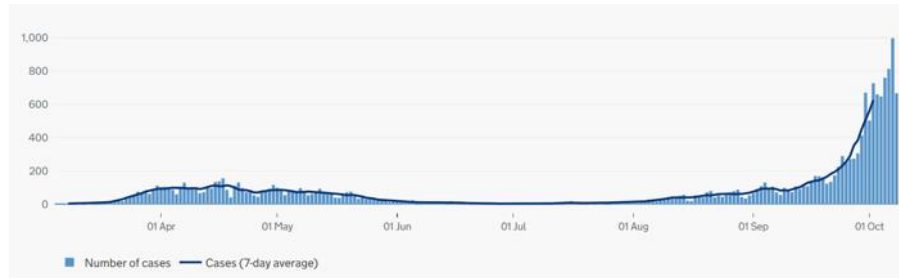
Number of cases by specimen date in the UK



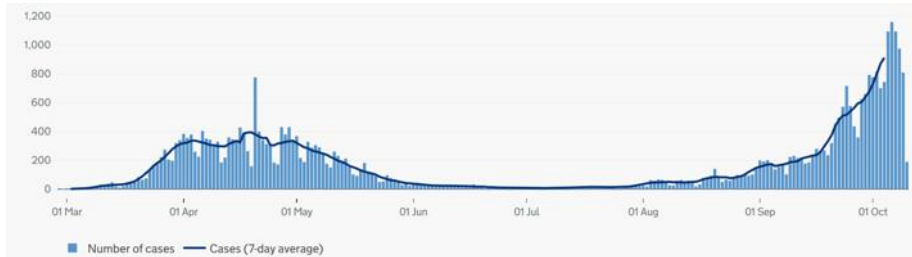
England



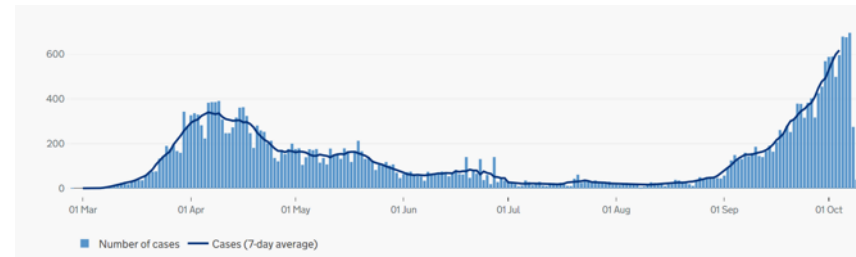
Northern Ireland



Scotland

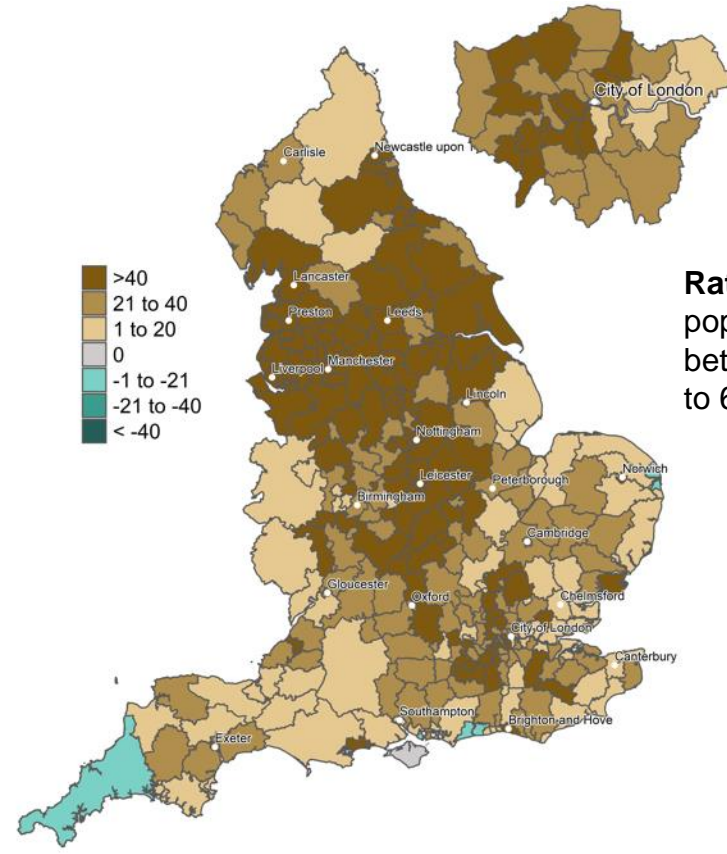
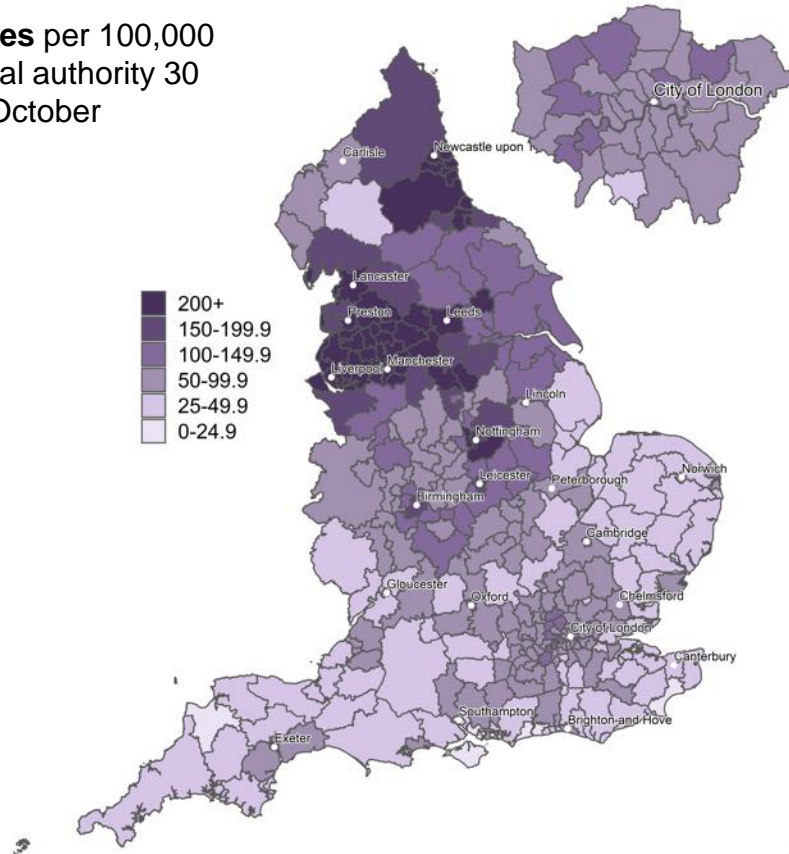


Wales



Geographical spread of COVID-19 in England

Weekly case rates per 100,000 population by local authority 30 September to 6 October

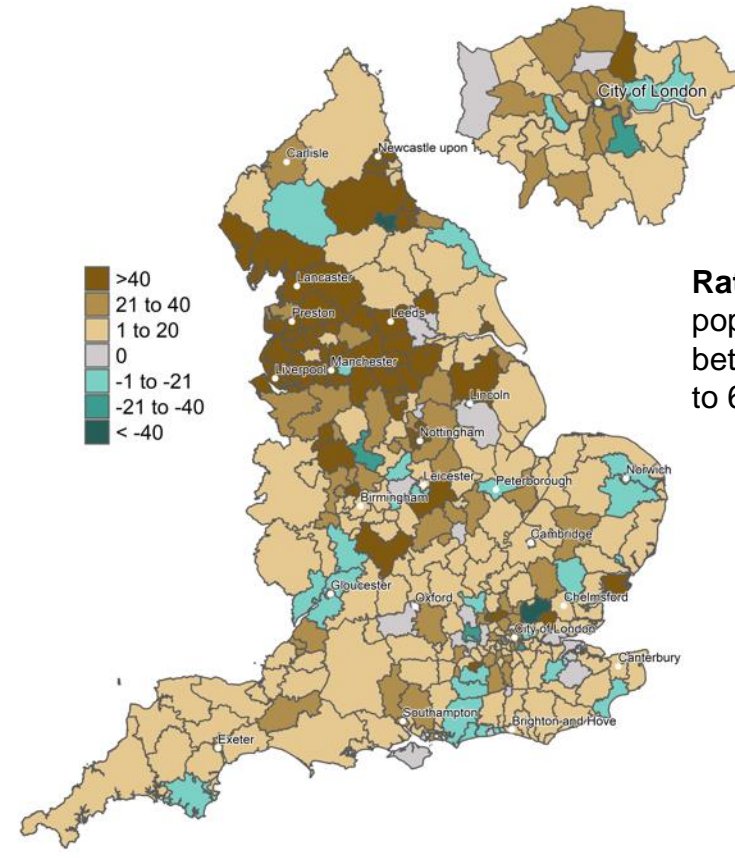
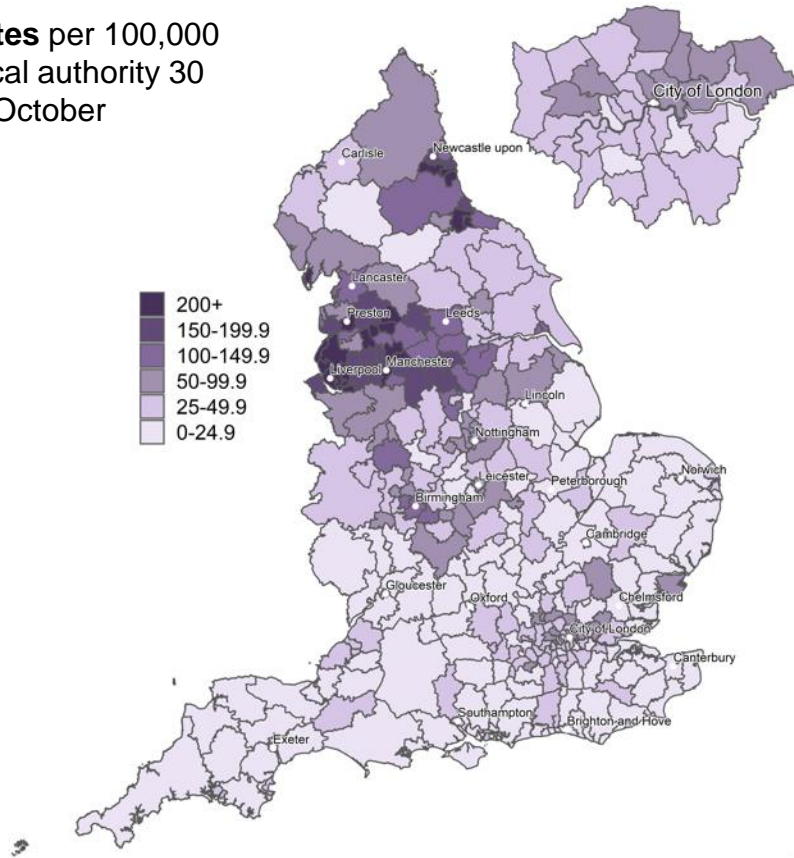


Rate change per 100,000 population by local authority between 23-29 Sept and 30 Sept to 6 Oct

Source: Data from Pillar 1 and 2 testing. Figure by Outbreak Surveillance Team, Public Health England, and ONS 2018 mid-term population estimates

Geographical spread of COVID-19 in England (Ages 60+)

Weekly case rates per 100,000 population by local authority 30 September to 6 October

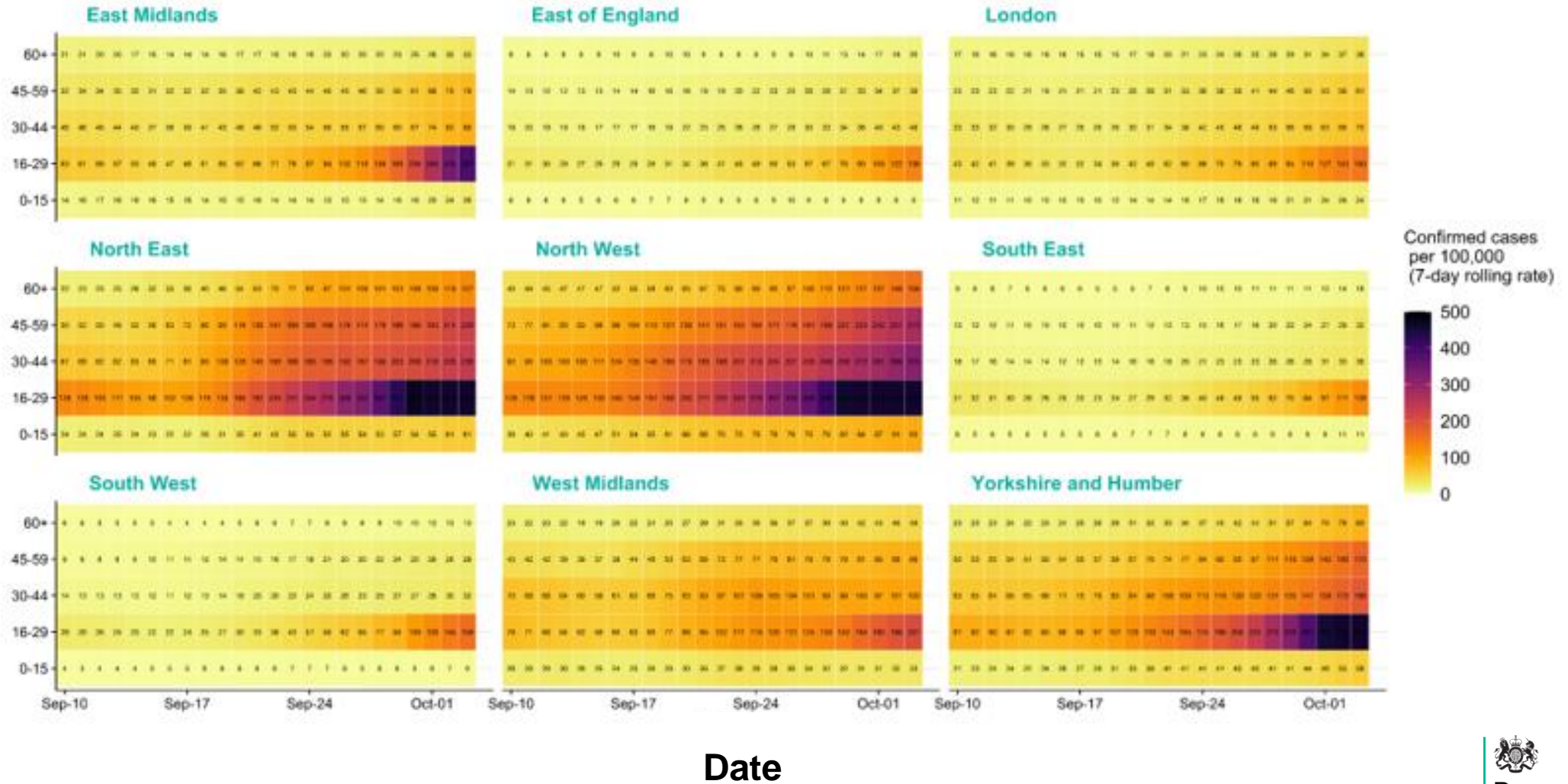


Rate change per 100,000 population by local authority between 23-29 Sept and 30 Sept to 6 Oct

Source: Data from Pillar 1 and 2 testing. Figure by Outbreak Surveillance Team, Public Health England, and ONS 2018 mid-term population estimates

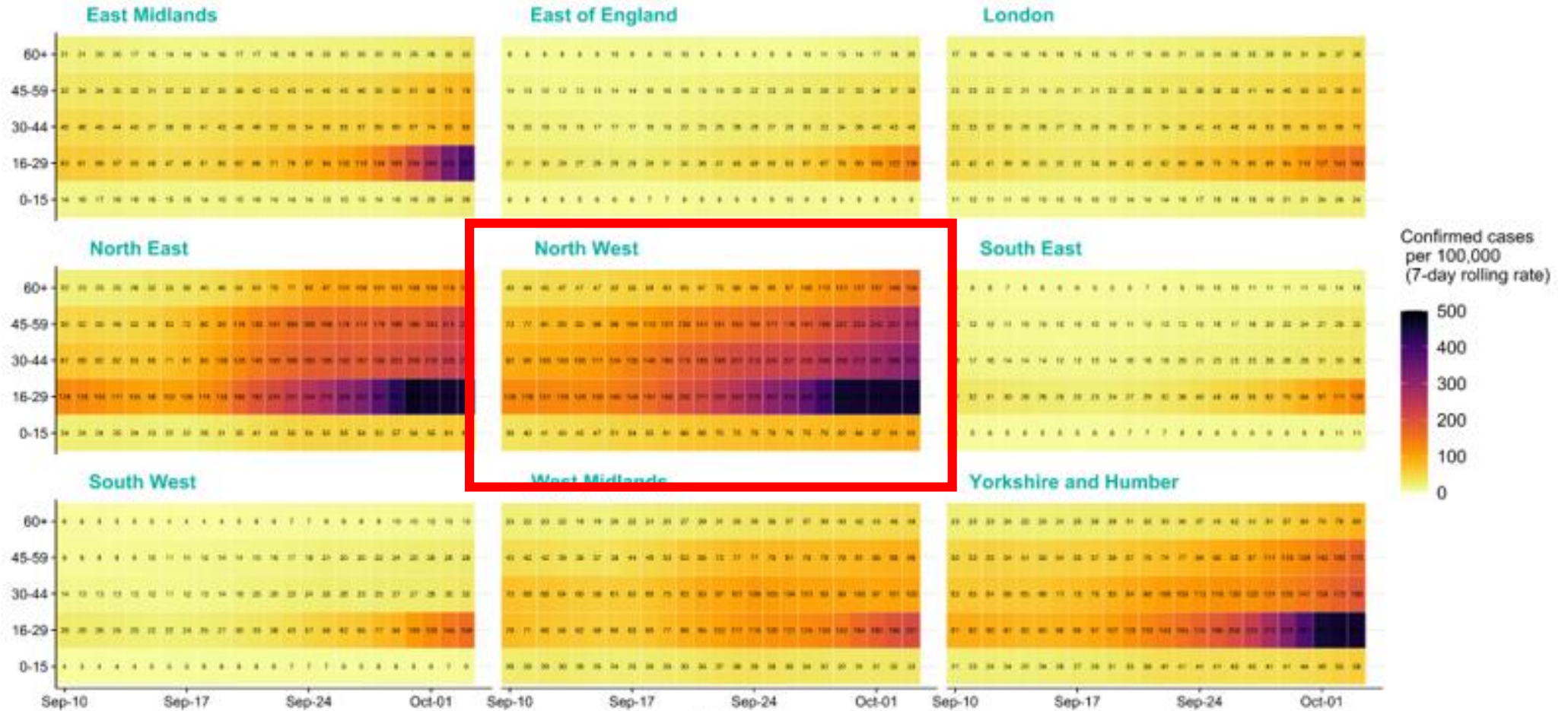
Age-specific confirmed case rate England regions

Age
band



Age-specific confirmed case rate England regions

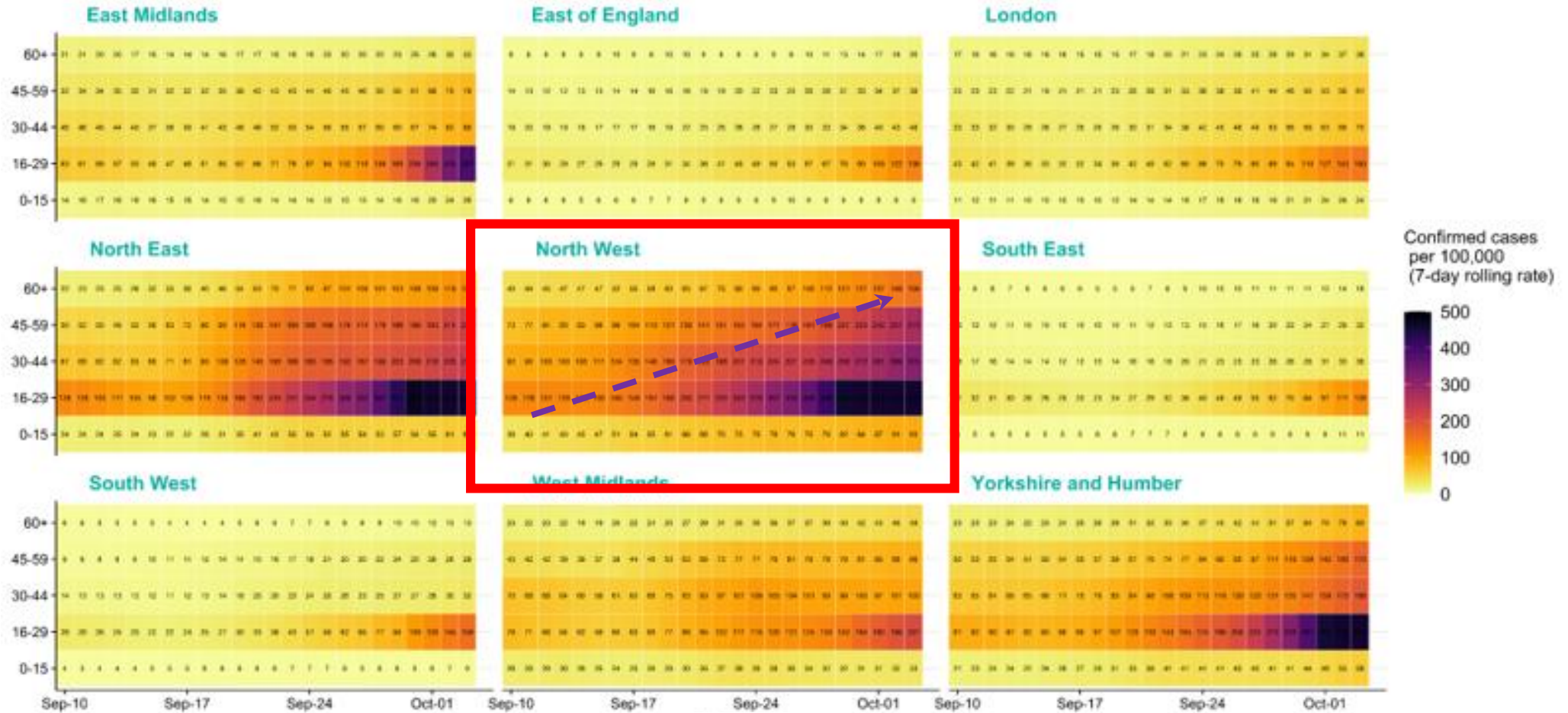
Age
band



Date

Age-specific confirmed case rate England regions

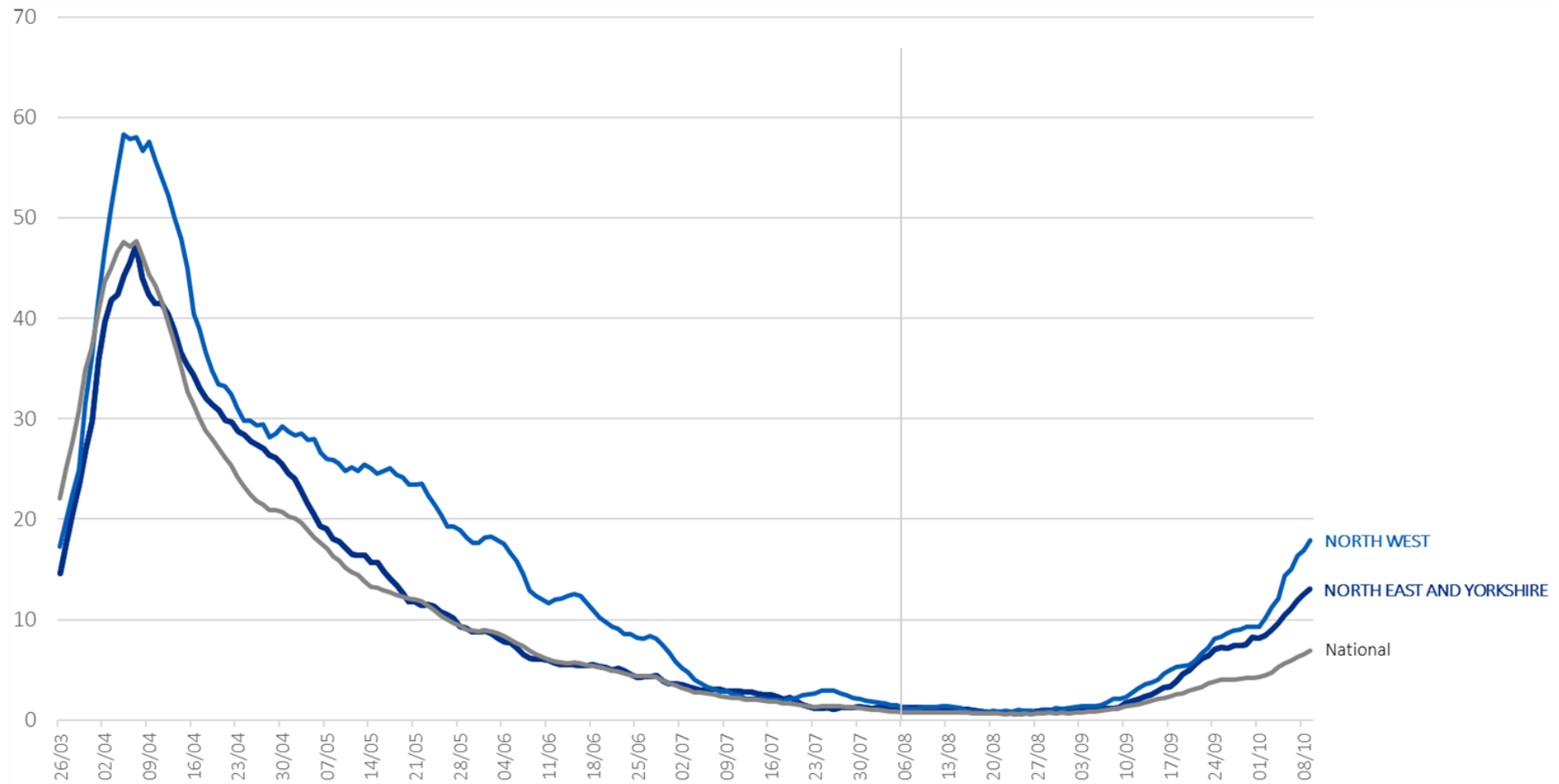
Age
band



Date

Long term trend in newly reported hospital cases

7-day rolling average of new hospital patients, per 1m people

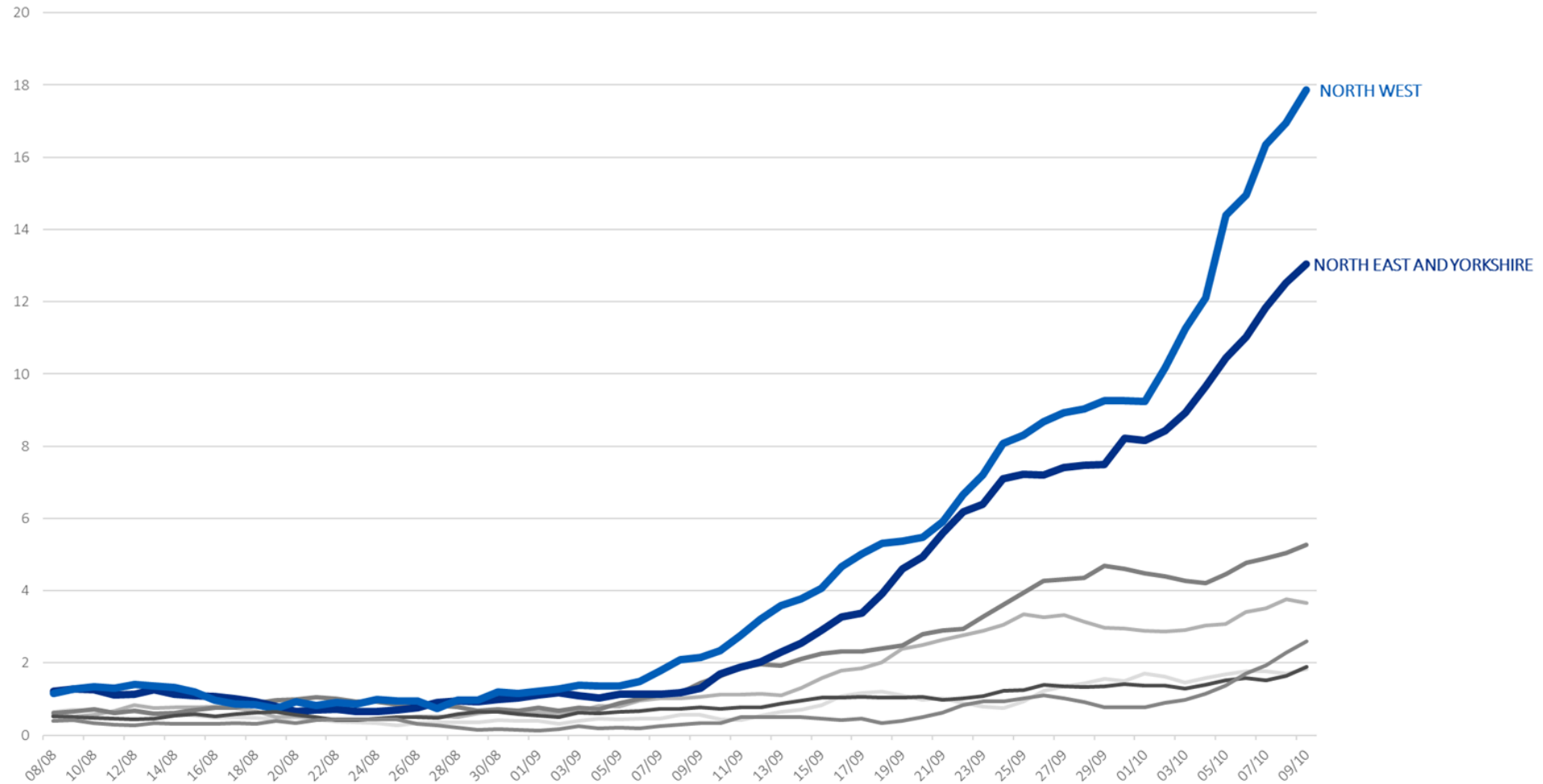


Source: Daily sitrep. Newly reported hospital cases prior to August, and then estimated new admissions to hospital from the community.



Trend in newly reported hospital cases

7-day rolling average of new hospital patients, per 1m people,
from 1st August to 9th October

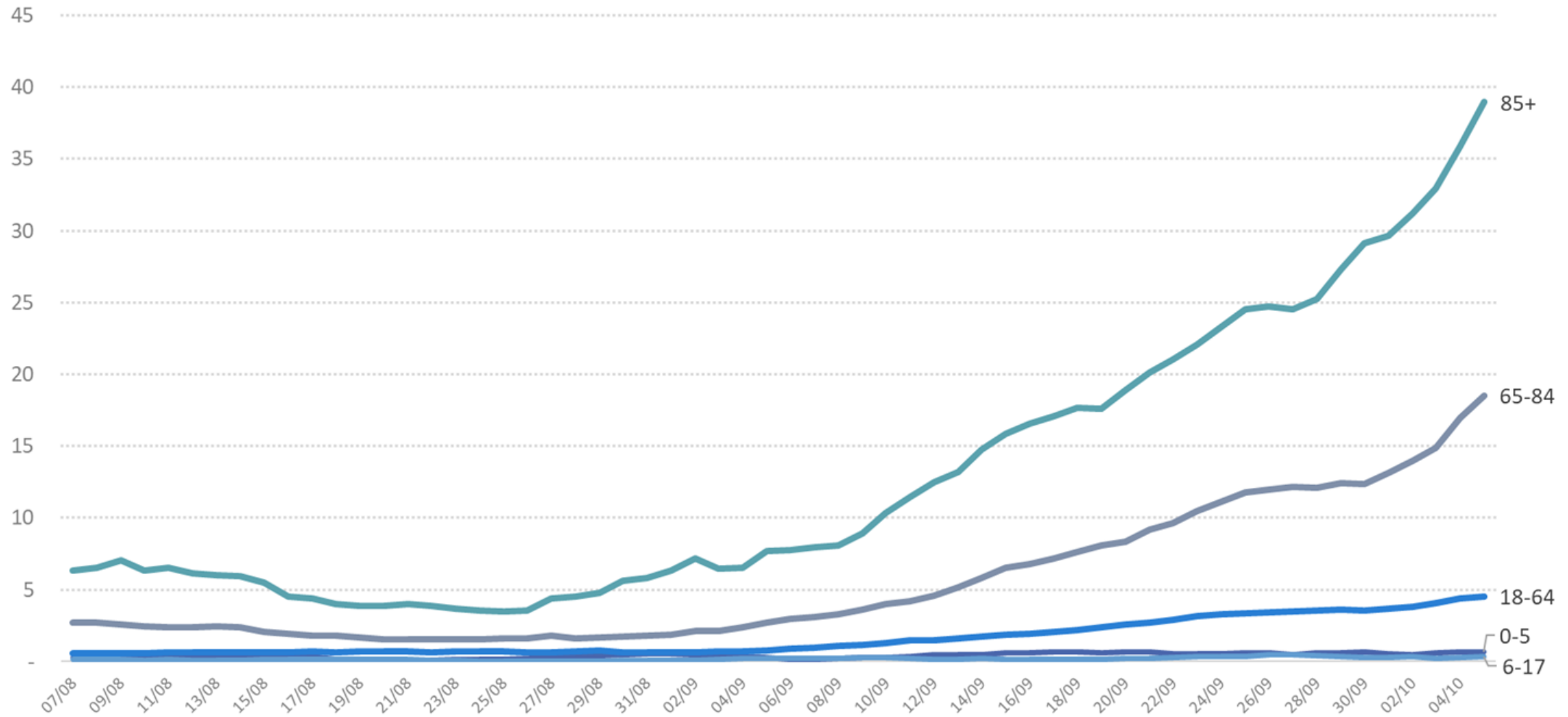


Source: Daily sitrep. Data show estimated new admissions to hospital from the community



Newly reported hospital cases by age

7-day rolling average of new hospital patients, per 1m people

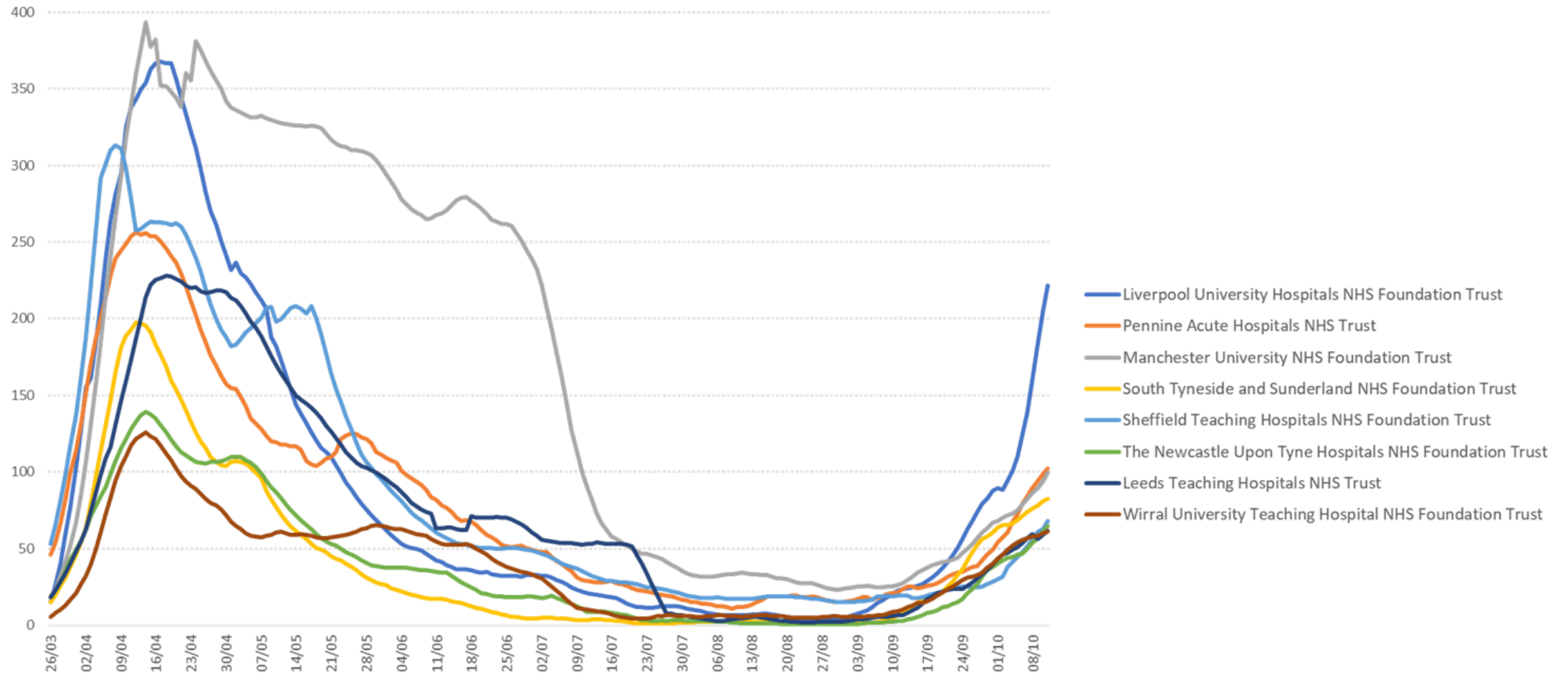


Source: Daily sitrep. Data show patients admitted with Covid19 or diagnosed with Covid19 after admission.



Local position in the North West and North East

7-day rolling average of Covid19 patients in beds



Source: Daily sitrep. Selected trusts. Data adjusted for missings and outliers.



Average time taken for different stages

Indicative timings given, varies significantly by individual

