



England Coast Path Stretch: Salcott to Jaywick

Report SCJ 6: Stone Point, Point Clear to Lion Point, Jaywick

Part 6.1: Introduction

Start Point:	Stone Point, Point Clear (Grid reference TM0829 1576)
End Point:	Lion Point, Jaywick (Grid reference TM1470 1285)
Relevant Maps:	SCJ 6a to SCJ 6f

6.1.1 This is one of a series of linked but legally separate reports published by Natural England under section 51 of the National Parks and Access to the Countryside Act 1949, which make proposals to the Secretary of State for improved public access along and to this stretch of coast between Salcott and Jaywick.

6.1.2 This report covers length SCJ 6 of the stretch, which is the coast between Stone Point, Point Clear and Lion Point, Jaywick. It makes free-standing statutory proposals for this part of the stretch, and seeks approval for them by the Secretary of State in their own right under section 52 of the National Parks and Access to the Countryside Act 1949.

6.1.3 The report explains how we propose to implement the England Coast Path (“the trail”) on this part of the stretch, and details the likely consequences in terms of the wider ‘Coastal Margin’ that will be created if our proposals are approved by the Secretary of State. Our report also sets out:

- any proposals we think are necessary for restricting or excluding coastal access rights to address particular issues, in line with the powers in the legislation; and
- any proposed powers for the trail to be capable of being relocated on particular sections (“roll-back”), if this proves necessary in the future because of coastal change.

6.1.4 There is also a single Overview document for the whole of this stretch of coast, explaining common principles and background. **This and the other individual reports relating to the stretch should be read in conjunction with the Overview. The Overview explains, among other things, how we have considered any potential environmental impacts of improving public access to this part of the coast, and this report, and other separately published assessments we refer to, then provides more detail on these aspects where appropriate.**

Part 6.2: Proposals Narrative

The trail:

Generally follows existing walked routes, including public rights of way, along most of this length.

6.2.1 Mainly follows the coastline quite closely and maintains good views of the sea.

6.2.2 Includes one significant section of new path (SCJ-6-S073 to SCJ-6-S080) connecting Point Clear directly to Colne Point along the seabank. See maps SCJ6b and SCJ6c and associated tables below for details.

6.2.3 A significant inland diversion is necessary in one place to take the trail past an area where private gardens extend to the foreshore on the east side of Point Clear.

In this part of the report, we explain how we have taken account of environmental protection objectives in developing our proposals for improved coastal access.

6.2.4 The following designated sites affect this length of coast:

- Essex Estuaries Special Area of Conservation (SAC)
- Colne Estuary (Mid-Essex Coast Phase 2) Special Protection Area (SPA)
- Colne Estuary (Mid-Essex Coast Phase 2) Ramsar site
- Colne Estuary Site of Special Scientific Interest (SSSI) for its wildlife and habitat interests
- Clacton Cliffs and Foreshore Site of Special Scientific Interest (SSSI) for its geological interest
- Colne Marshes National Nature Reserve (NNR)
- Blackwater, Crouch, Roach and Colne Estuaries Marine Conservation Zone (MCZ)
- Martello Tower A and associated battery, Stone Point
- Martello Tower C Scheduled Monument, Jaywick

See Overview maps C1, C2 and D

The following table brings together design features included in our access proposals to help to protect the environment along this length of the coast.

6.2.5 Measures to protect the environment

Map(s)	Route section number(s)	Design features of the access proposals	Reason included
SCJ 6b to 6d	SCJ-6-S078 to SCJ-6-S085	<p>The following design features are described elsewhere in this report:</p> <ul style="list-style-type: none"> ■ Coastal access rights would be excluded over all parts of Colne Point within the Colne Estuary National Nature Reserve for all except permitted visitors. The foreshore below the vegetated line would not be included within 	To prevent damage from recreational access to the vegetated sand and shingle habitat, to protect migratory birds from disturbance, and to protect

Map(s)	Route section number(s)	Design features of the access proposals	Reason included
		<p>this restriction but would exclude dogs in line with current restrictions</p> <p>In addition, we will install:</p> <ul style="list-style-type: none"> ■ A notice at the access point from Lee Wick Farm Lane explaining the sensitivity of the site and reasons for restriction to access on this part of the margin and the exclusion of visitors with dogs <p>No specific measures are needed to protect Scheduled Monuments, as they are landward of the coastal margin</p>	<p>bird nesting areas from trampling and disturbance within the NNR.</p>

6.2.6 Natural England is satisfied that the proposals for coastal access in this report are made in accordance with relevant environmental protection legislation. For more information about how we came to this conclusion; see the following assessments of the access proposals that we have published separately:

- A Habitats Regulations Assessment relating to any potential impact on the conservation objectives of European sites.
- Our Nature Conservation Assessment, in which we document our conclusions in relation to other potential impacts on nature conservation.

Part 6b of the Overview includes some contextual information about protecting the environment along this length of coast.

Accessibility:

6.2.7 There are few artificial barriers to accessibility on the proposed route. However, the natural coastal terrain is often challenging for people with reduced mobility and this is the case on sections of our proposed route because:

- The trail will follow an uneven grass or bare soil path along the top of seawalls and along field margins;
- There are slopes where it will be necessary to gain access to and from the sea wall.

6.2.8 At Point Clear, as indicated on map SCJ6b, the existing footbridge will be replaced, so as to make it easier to use. We envisage this happening as part of the physical establishment work described below.

See part 6a of the Overview - 'Recreational issues' - for more information.

Where we have proposed exercising statutory discretions:

6.2.9 **Estuary:** This report proposes that the trail should contain sections aligned on the estuary of the River Colne, extending upstream from the open coast. Natural England proposes to exercise its functions as if the sea included the estuarial waters of that river as far as the Colne Causeway, Colchester, as indicated by the extent of the trail shown on map SCJ 3c.

6.2.10 **Landward boundary of the coastal margin:** We have used our discretion on some sections of the route to map the landward extent of the coastal margin to an adjacent physical boundary such as a fence line, pavement or track to make the extent of the new access rights clearer. See Table 6.3.1 below.

6.2.11 We have used this discretion to limit the landward extent of the coastal margin to the landward top edge of the seawall. This has had the effect of reducing the amount of coastal margin that would have otherwise been available by default. This option provides the most clarity because:

- There is no clear boundary feature at the bottom of the seawall that could mark the boundary of the coastal margin, but the break in slope provides an easily identifiable boundary for access users.

6.2.12 The Proposals Tables show where we are proposing to alter the default landward boundary of the coastal margin. These proposals are set out in columns 5b and 5c of table 6.3.1. Where these columns are left blank, we are making no such proposals, so the default landward boundary applies. See the note relating to Columns 5b & 5c [above Table 6.3.1] explaining what this means in practice.

See also part 3 of the Overview - 'Understanding the proposals and accompanying maps', for a more detailed explanation of the default extent of the coastal margin and how we may use our discretion to adjust the margin, either to add land or to provide clarity.

6.2.13 **Restrictions and/or exclusions:** We have proposed to exclude and restrict access by direction under the Countryside and Rights of Way Act (2000) in certain places along this section of coast.

Exclusion of access to the saltmarsh/flat at River Colne estuary and coast between Colne Point and Jaywick.

6.2.14 Access to the saltmarsh and flats in the coastal margin seaward of route sections SCJ-6-S001 to SCJ-6-S077 and route sections SCJ-6-S084 to SCJ-6-S089 to is to be excluded all year round by direction under Section 25A of the Countryside and Rights of Way Act (2000) because we are satisfied that it is unsuitable for public access. The exclusion does not affect the route itself and will have no legal effect on land where coastal access rights do not apply. See Directions map 6A below for further detail.

6.2.15 The section 25A restriction is proposed where it is considered that saltmarsh and flats are unsuitable for public access, notwithstanding any locally tolerated access. Safety is considered as part of the assessment along with the nature of the terrain and any natural risks that exist such as soft mud, hidden channels, potential to be trapped by rising tides, and suitability for walking. The intention is to prevent those who may be unfamiliar with the risks from using such areas.

- The areas of saltmarsh on the Colne Estuary are subject to regular tidal inundation, and are generally uneven and wet underfoot, incised with creeks and channels, some of which would not be readily apparent to walkers.

- The areas of flats on the Colne Estuary are predominantly soft mud at low tide that is difficult to walk on, which becomes inundated when the tide rises.

Restriction on access at Colne Point National Nature Reserve

6.2.16 Access to the coastal margin on the Colne Estuary National Nature Reserve (NNR) will be restricted all year round to people without dogs on the intertidal area along the beach below the vegetated strandline, seaward of route sections SCJ-6-S078 to SCJ-6-S085. This is proposed under Section 26(3)(a) of the Countryside and Rights of Way Act (2000) to prevent damage from recreational access to the vegetated sand and shingle habitat, to protect passage and wintering birds from disturbance, and to protect bird nesting areas from trampling and disturbance. These restrictions will not affect the route itself and will have no legal effect on land where coastal access rights do not apply. See Directions map 6A below, the Habitat Regulations Assessment and the Nature Conservation Assessment accompanying this report for further detail.

6.2.17 The Colne Point Nature Reserve forms part of the Colne Estuary National Nature Reserve (NNR) and is managed by Essex Wildlife Trust, with restricted access to Wildlife Trust members and no dogs permitted on site. There is also informal access along the beach from the direction of Seawick. The site is predominantly saltmarsh and shingle, with rare Mediterranean saltmarsh scrub. Internationally and nationally protected migratory bird species feed and roost on the reserve during passage in the spring and autumn and over the winter. Internationally protected little terns and nationally important ringed plover nest on the sand and shingle during the summer. Our published Habitats Regulations Assessment and the Nature Conservation Assessment for this stretch of coast explains these sensitivities in more detail and why we concluded that unrestricted access would not be in keeping with the conservation objectives for the site.

6.2.18 Much of the Colne Estuary NNR is saltmarsh and flats, assessed as unsuitable for general recreational access on foot. Whilst we have proposed to exclude areas of saltmarsh and flats elsewhere, on the Colne Point Nature Reserve the saltmarsh and flats is widely interspersed with shingle and sand, and the location of these habitats are subject to regular change through coastal processes. To provide greater clarity across this mosaic habitat we propose to exclude new coastal access rights from these areas for the purpose of nature conservation.

6.2.19 The intertidal area along the beach below the vegetated strandline will be available for public access to people without dogs, to allow existing access use on foot to continue. Permissive access granted by Essex Wildlife Trust to Colne Point Nature Reserve will also be unaffected by the exclusion on new coastal access rights.

Authorised visitors to the reserve are:

- Essex Wildlife Trust members
- Residents of the neighbouring chalets by agreement
- Visitors landing on the beach by boat in a permitted area
- Individuals or groups by previous arrangement

6.2.20 These directions will not prevent or affect:

- any existing local use of the land by right: such use is not covered by coastal access rights;
- any other use people already make of the land locally by formal agreement with the landowner, or by informal permission or traditional toleration; or
- use of any registered rights of common or any rights at common law or by Royal Charter etc.

Any such use is not prohibited or limited by these arrangements.

6.2.21 The directions we give are intended to avoid any new public rights being created over the area in question in view of the difficult terrain of mudflats and saltmarsh, the risk of damage and disturbance to fragile habitats and internationally protected birds, and existing visitor management at Colne Point Nature Reserve.

See part 8 of the Overview - 'Restrictions and exclusions' - for a summary for the entire stretch.

6.2.22 **Coastal erosion:** Natural England is able to propose that the route of the trail would be able to change in the future, without further approval from the Secretary of State, in response to coastal change. This would happen in accordance with the criteria and procedures for 'roll-back' set out in part 7 of the Overview.

Natural England may only propose the use of this roll-back power:

- as a result of coastal erosion or other geomorphological processes or encroachment by the sea, or
- in order to link with other parts of the route that need to roll back in direct response to such changes.

6.2.23 We have chosen not to make any such proposal in this report. Accordingly the route is to be at the centre of the line shown on maps SCJ 6a to SCJ 6f as the proposed route of the trail.

Other future change:

6.2.24 At this point we do not foresee any need for future changes to the access provisions that we have proposed within this report.

See parts 7 - 'Future changes' of the Overview for more information.

Establishment of the trail:

6.2.25 Below we summarise how our proposed route for the trail would be physically established to make it ready for public use before any new rights come into force.

Establishment works will only start on this length of coast once these proposals have been approved by the Secretary of State. The works may therefore either precede or follow the start of establishment works on other lengths of coast within the stretch, and detailed in their separate reports.

6.2.26 Our estimate of the capital costs for physical establishment of the trail on the proposed route is **£16,000** and is informed by:

- information already held by the access authority, Essex County Council;
- the conclusions of our deliberations in relation to potential impacts on the environment; and
- information gathered while visiting affected land and talking to the people who own and manage it about the options for the route.

6.2.27 There are three main elements to the overall cost:

- Fingerposts and waymarking to clearly indicate the route of the trail
- A new information board and lockable gate at the main access point to the Colne Point reserve explaining the sensitive site features and the access restrictions in place to protect them
- A new footbridge south of Point Clear to provide access to the new section

Table 1 shows our estimate of the capital cost for each of the main elements of physical establishment described above.

Table 1: Estimate of capital costs

Item	Cost
Waymarking and fingerposts	£11,500
Information board and gate	£2,500
Footbridge	£2,000

Total **£16,000 (Exclusive of any VAT payable)**

6.2.28 Once the Secretary of State’s decision on our report has been notified, and further to our conversations with land managers during the route planning stage, Essex County Council will liaise with affected land owners and occupiers about relevant aspects of the design, installation and maintenance of the new signs and infrastructure that are needed on their land. Prior to works being carried out on the ground, all necessary permissions, authorisations and consents will be obtained. All such works would conform to the published standards for National Trails and the other criteria described in our Coastal Access Scheme.

Maintenance of the trail:

6.2.29 Because the trail on this length of coast will form part of the National Trail being created around the whole coast of England called the England Coast Path, we envisage that it will be maintained to the same high quality standards as other National Trails in England (see The New Deal; Management of National Trails in England from April 2013: details at Annex A of the Overview).

6.2.30 We estimate that the annual cost to maintain the trail will be **£3,490** (exclusive of any VAT payable). In developing this estimate we have taken account of the formula used to calculate Natural England’s contribution to the maintenance of other National Trails.

Part 6.3: Proposals Tables

See Part 3 of Overview for guidance on reading and understanding the tables below

6.3.1 Section Details: Maps SCJ 6a to SCJ 6f – Stone Point, Point Clear to Lion Point, Jaywick

Key notes on table:

1. Column 2 – an asterisk (*) against the route section number means see also table 6.3.2: Other options considered.
2. Column 4 – ‘No’ means no roll-back is proposed for this route section. ‘Yes – normal’ means roll-back is proposed and is likely to follow the current feature (e.g. cliff edge/beach) for the foreseeable future as any coastal change occurs.
3. Column 5a - Certain coastal land types are included automatically in the coastal margin where they fall landward of the trail if they touch it at some point. The relevant land type (foreshore, cliff, bank, barrier, dune, beach, flat or section 15 land – see Glossary) is shown in this column where appropriate. “No” means none present on this route section.
4. Columns 5b and 5c – Any entry in these columns means we are proposing to align the landward boundary of the coastal margin on this route section with the physical feature(s) shown in 5b, for the reason in 5c. No text here means that for this route section the landward edge of the margin would be that of the trail itself - or if any default coastal land type is shown in 5a, that would be its landward boundary instead.

1	2	3	4	5a	5b	5c	6
Map(s)	Route section number(s)	Current status of route section(s)	Roll-back proposed? (See Part 7 of Overview)	Landward margin contains coastal land type?	Proposal to specify landward boundary of margin (See maps)	Reason for landward boundary proposal	Explanatory notes
SCJ 6a	SCJ-6-S001 to SCJ-6-S049	Public footpath	No	No	Path	Clarity and cohesion	Edge of promenade path
SCJ 6a	SCJ-6-S050*	Public footpath	No	No			
SCJ 6a	SCJ-6-S051* to SCJ-6-S062*	Public footpath	No	No	Fence line	Clarity and cohesion	
SCJ 6a	SCJ-6-S063* to SCJ-6-S066*	Public footway (Pavement)	No	No			
SCJ 6a	SCJ-6-S067*	Public highway	No	No			
SCJ 6a to SCJ 6b	SCJ-6-S068* and SCJ-6-S069*	Public footway (Pavement)	No	No	Pavement edge	Clarity and cohesion	

1	2	3	4	5a	5b	5c	6
Map(s)	Route section number(s)	Current status of route section(s)	Roll-back proposed? (See Part 7 of Overview)	Landward margin contains coastal land type?	Proposal to specify landward boundary of margin (See maps)	Reason for landward boundary proposal	Explanatory notes
SCJ 6b	SCJ-6-S070*	Public highway	No	No			
SCJ 6b	SCJ-6-S071*	Public footway (Pavement)	No	No	Pavement edge	Clarity and cohesion	
SCJ 6b	SCJ-6-S072*	Public highway	No	No			
SCJ 6b	SCJ-6-S073* to SCJ-6-S075*	Not an existing walked route	No	No			
SCJ 6b	SCJ-6-S076*	Not an existing walked route	No	No	Landward edge of bridge	Clarity and cohesion	
SCJ 6b	SCJ-6-S077*	Not an existing walked route	No	No			
SCJ 6b to SCJ 6c	SCJ-6-S078 to SCJ-6-S080	Not an existing walked route	No	Yes - bank	Landward top edge of the seawall	Clarity and cohesion	
SCJ 6c to SCJ 6d	SCJ-6-S081 to SCJ-6-S087	Public footpath	No	Yes - bank	Landward top edge of the seawall	Clarity and cohesion	
SCJ 6e	SCJ-6-S088 to SCJ-6-S090	Public footpath	No	No	Path	Clarity and cohesion	Edge of promenade path
SCJ 6e	SCJ-6-S091	Other existing walked route	No	No			
SCJ 6e to SCJ 6f	SCJ-6-S092 to SCJ-6-S096	Public footpath	No	No	Path	Clarity and cohesion	Edge of promenade path
SCJ 6f	SCJ-6-S097	Public footpath	No	No			

6.3.2 Other options considered: Maps SCJ 6a to SCJ 6f – Stone Point, Point Clear to Lion Point, Jaywick

Map(s)	Route section numbers(s)	Other option(s) considered	Reasons for not proposing this option
SCJ 6a & SCJ 6b	SCJ-6-S050 to SCJ-6-S077	We considered aligning the trail along the beach and foreshore between Seaview Terrace and the seawall south of Point Clear.	<p>We opted for the proposed route because:</p> <ul style="list-style-type: none"> ■ It avoids possible damage to the sensitive features of the SSSI from recreational access ■ The option considered would result in an impact on the privacy of the residential properties and gardens adjoining ■ we concluded that overall the proposed route struck the best balance in terms of the criteria described in chapter 4 of the Coastal Access Scheme

Note: Any public rights of way not forming part of the proposed trail would remain available for people to use under their pre-existing rights.

Part 6.4: Proposals Maps

6.4.1 Map Index

Map reference	Map title
SCJ 6a	Stone Point, Point Clear to Point Road, Point Clear
SCJ 6b	Point Road, Point Clear to Lee Wick Farm
SCJ 6c	Lee Wick Farm to Lee-over-Sands
SCJ 6d	Lee-over-Sands to Bel-Air Estate
SCJ 6e	Bel-Air Estate to Martello Tower No.3
SCJ 6f	Martello Tower No.3 to Lion Point Jaywick
Directions map 6A	Saltmarsh and flat and Colne Point NNR: Proposed directions under S25A CROW and S26(3)(a) CROW

PROPOSALS

Trail Sections

- Trail using existing public right of way or highway
- Trail using other existing walked route
- Trail not using existing walked route
- Alternative route
- Trail shown on other maps
- Approved or open England Coast Path

Maps that show sections of the trail that follow the existing South West Coast Path as currently walked and managed use the following trail categories. Information on the existing status and infrastructure is not shown.

- Trail using existing South West Coast Path
- Alternative or optional alternative route using existing South West Coast Path

Trail sections which follow existing public rights of way or highways are indicated by a suffix:

- BW** - Public bridleway
- BY** - Public byway
- CP** - Cycletrack (pedestrian)
- CT** - Cycletrack (cycles only)
- FP** - Public footpath
- FW** - Public footway (Pavement)
- RB** - Restricted byway
- RD** - Public road

Coastal Margin

Explanatory note

Part 3 of the Overview to the report explains where the landward boundary of the coastal margin falls by default. Our proposals include any suggested variation of this default boundary. The purple wash on the map indicates where as a result of our proposals the coastal margin would extend significantly to the landward side of the proposed route of the trail. The coastal margin may include some areas where coastal access rights do not apply, either seaward or landward of the proposed route of the trail: the Overview explains more about this. The landward boundary of the coastal margin may in due course move inland, if the trail rolls back under proposals in this report to respond to coastal change.

- Coastal margin landward of the trail
- Coastal margin landward of the trail which is existing access land

Other Information

Other access rights and routes

- Public bridleways
- Public byways
- Public footpaths
- Restricted byways
- South West Coast Path
- Sustrans national routes
- Existing access land
- MoD byelaw (excepted land)

Infrastructure types

For status of each, where shown on map, see colour codes below

Bridges:

- Clapper bridge
- Footbridge
- Quad bike bridge
- Sleeper bridge
- Vehicle bridge

Stiles:

- Ladder stile
- Lift-up stile
- Squeeze stile
- Step stile
- Stone stile

Gates:

- Bristol gate
- Field gate
- Gateway with no gate
- Kissing gate
- Pedestrian gate
- Wheelchair gate

Miscellaneous:

- Barrier
- Boardwalk
- Bollard
- Cattle grid
- Culvert
- Cycle chicane
- Drainage
- Drop-kerb
- Gap in fence
- Hurdle
- Interpretation panel
- Advisory sign
- Ramp
- Revetment
- Stepping stones
- Steps

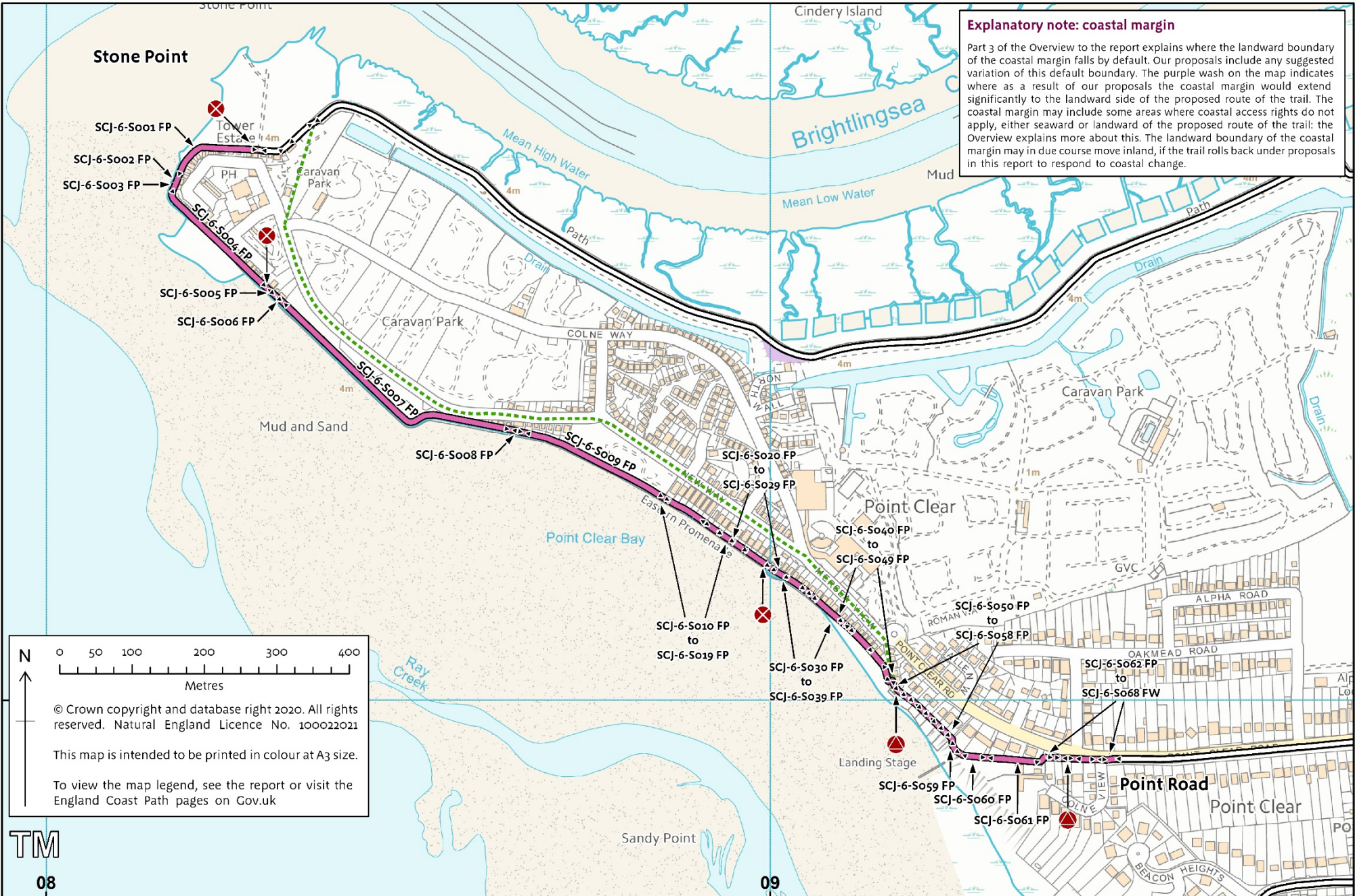
Infrastructure status

Each symbol shown on the map is colour coded as appropriate, as in this example for a set of steps:

- Existing steps to be retained
- New steps required
- Existing steps to be removed

* Please note that the items in this legend may not all be present on an individual map or report.

Map SCJ 6a: Stone Point, Point Clear to Point Road, Point Clear



Explanatory note: coastal margin

Part 3 of the Overview to the report explains where the landward boundary of the coastal margin falls by default. Our proposals include any suggested variation of this default boundary. The purple wash on the map indicates where as a result of our proposals the coastal margin would extend significantly to the landward side of the proposed route of the trail. The coastal margin may include some areas where coastal access rights do not apply, either seaward or landward of the proposed route of the trail: the Overview explains more about this. The landward boundary of the coastal margin may in due course move inland, if the trail rolls back under proposals in this report to respond to coastal change.

N

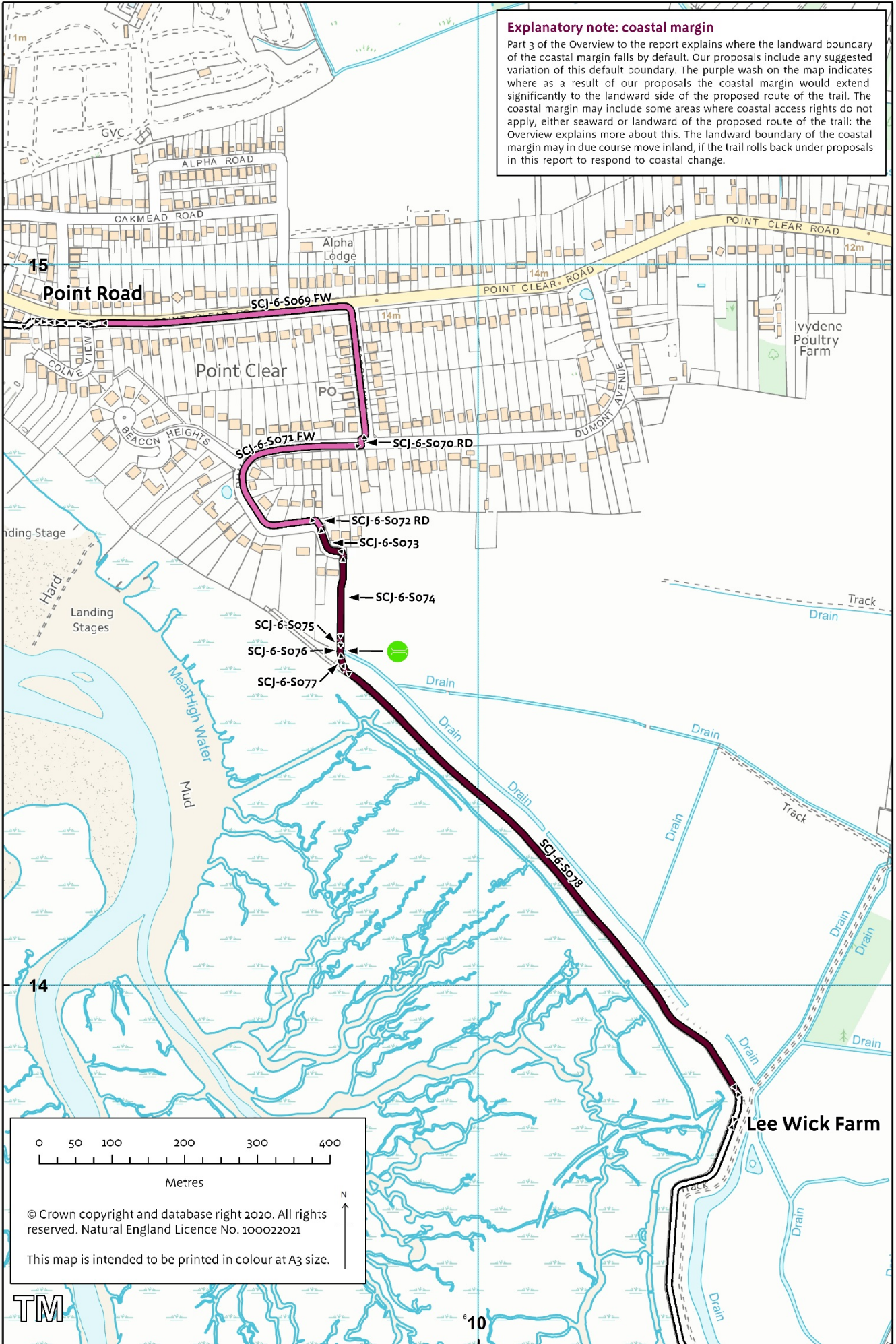
0 50 100 200 300 400
 Metres

© Crown copyright and database right 2020. All rights reserved. Natural England Licence No. 100022021

This map is intended to be printed in colour at A3 size.

To view the map legend, see the report or visit the England Coast Path pages on Gov.uk

Explanatory note: coastal margin
 Part 3 of the Overview to the report explains where the landward boundary of the coastal margin falls by default. Our proposals include any suggested variation of this default boundary. The purple wash on the map indicates where as a result of our proposals the coastal margin would extend significantly to the landward side of the proposed route of the trail. The coastal margin may include some areas where coastal access rights do not apply, either seaward or landward of the proposed route of the trail: the Overview explains more about this. The landward boundary of the coastal margin may in due course move inland, if the trail rolls back under proposals in this report to respond to coastal change.

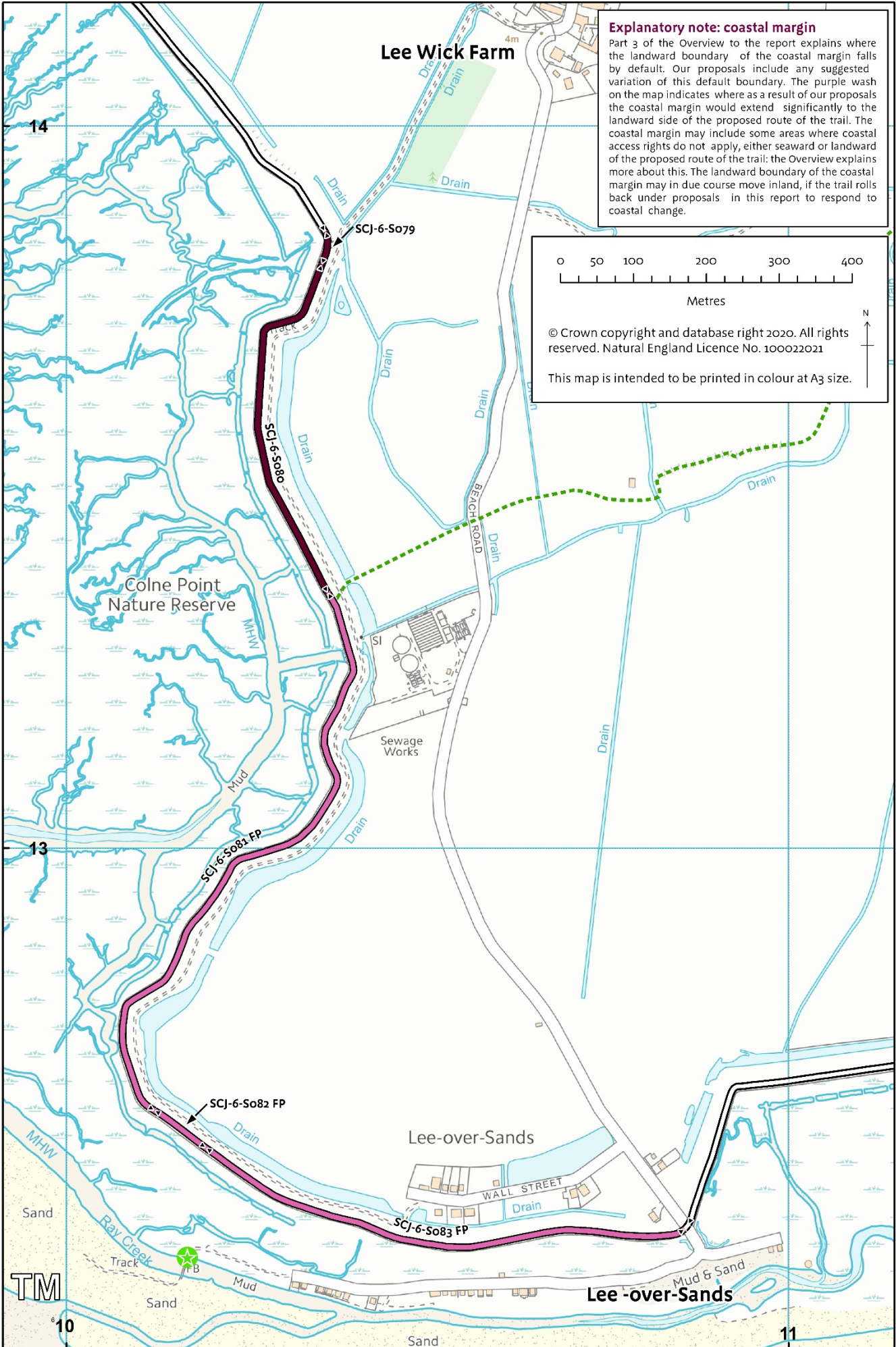


0 50 100 200 300 400
 Metres

© Crown copyright and database right 2020. All rights reserved. Natural England Licence No. 100022021

This map is intended to be printed in colour at A3 size.





Explanatory note: coastal margin
 Part 3 of the Overview to the report explains where the landward boundary of the coastal margin falls by default. Our proposals include any suggested variation of this default boundary. The purple wash on the map indicates where as a result of our proposals the coastal margin would extend significantly to the landward side of the proposed route of the trail. The coastal margin may include some areas where coastal access rights do not apply, either seaward or landward of the proposed route of the trail: the Overview explains more about this. The landward boundary of the coastal margin may in due course move inland, if the trail rolls back under proposals in this report to respond to coastal change.

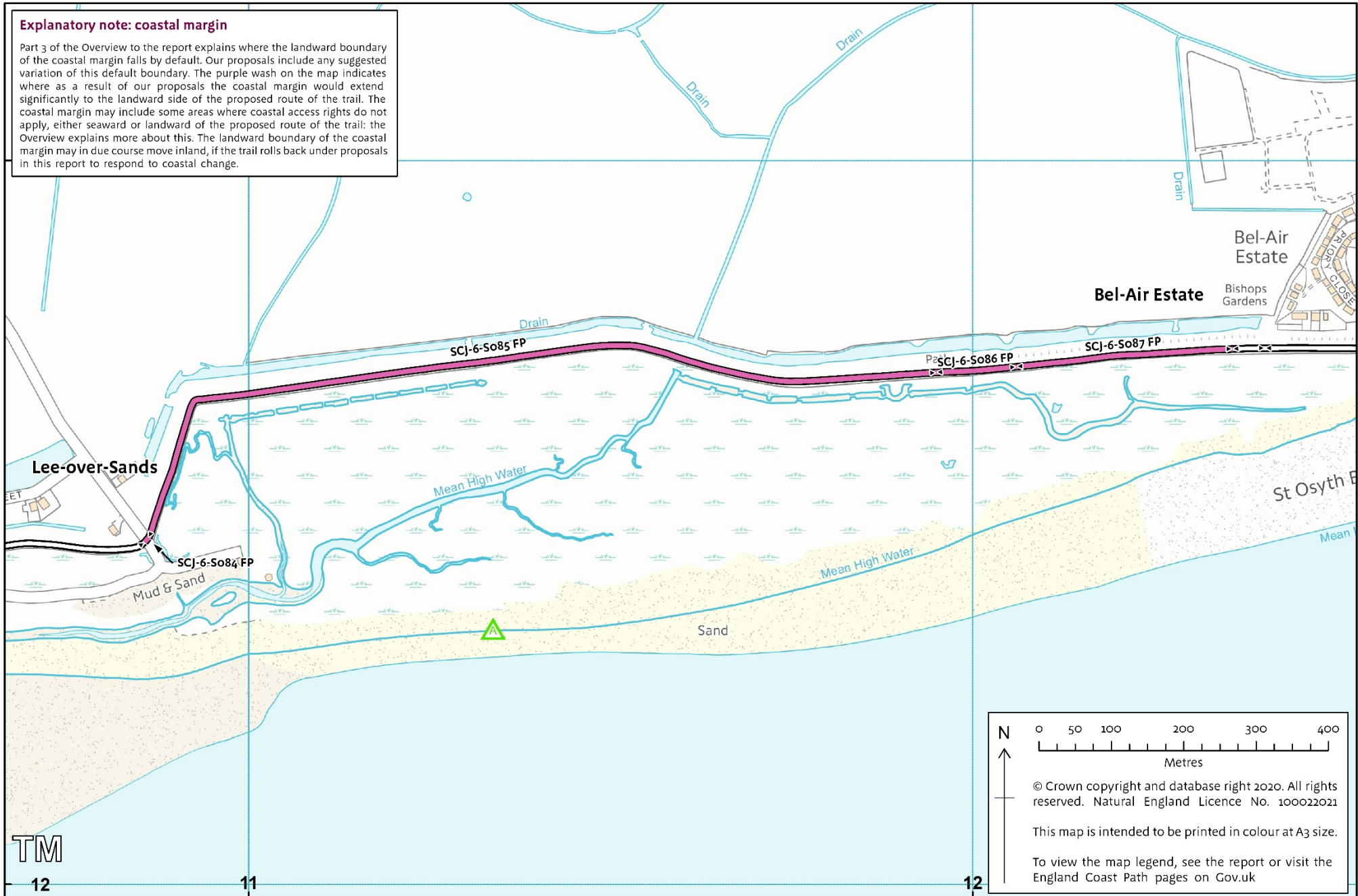
0 50 100 200 300 400
 Metres

© Crown copyright and database right 2020. All rights reserved. Natural England Licence No. 100022021

This map is intended to be printed in colour at A3 size.

Explanatory note: coastal margin

Part 3 of the Overview to the report explains where the landward boundary of the coastal margin falls by default. Our proposals include any suggested variation of this default boundary. The purple wash on the map indicates where as a result of our proposals the coastal margin would extend significantly to the landward side of the proposed route of the trail. The coastal margin may include some areas where coastal access rights do not apply, either seaward or landward of the proposed route of the trail: the Overview explains more about this. The landward boundary of the coastal margin may in due course move inland, if the trail rolls back under proposals in this report to respond to coastal change.



TM

12

11

12

N
↑

0 50 100 200 300 400
Metres

© Crown copyright and database right 2020. All rights reserved. Natural England Licence No. 100022021

This map is intended to be printed in colour at A3 size.

To view the map legend, see the report or visit the England Coast Path pages on Gov.uk

Explanatory note: coastal margin

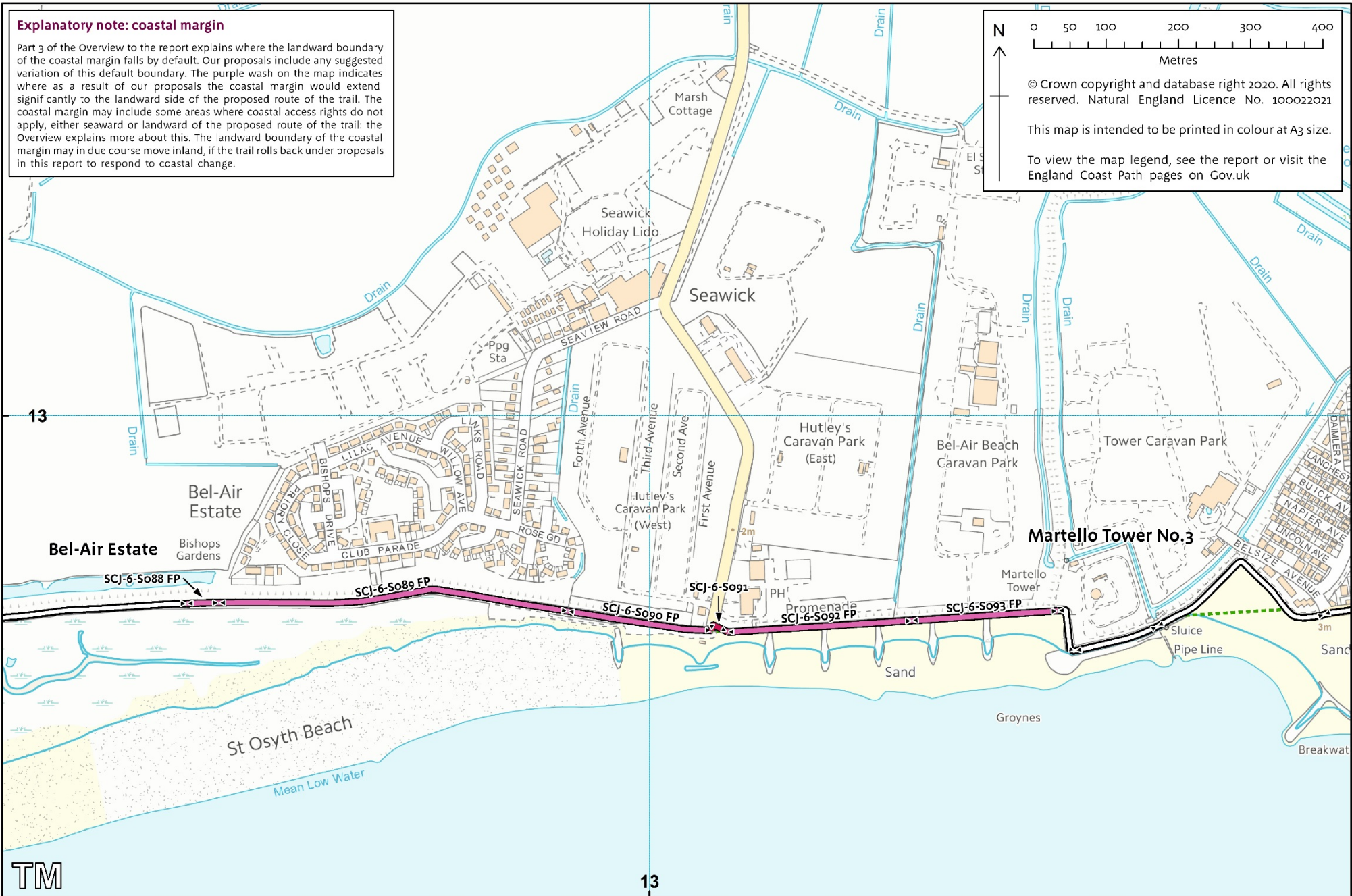
Part 3 of the Overview to the report explains where the landward boundary of the coastal margin falls by default. Our proposals include any suggested variation of this default boundary. The purple wash on the map indicates where as a result of our proposals the coastal margin would extend significantly to the landward side of the proposed route of the trail. The coastal margin may include some areas where coastal access rights do not apply, either seaward or landward of the proposed route of the trail: the Overview explains more about this. The landward boundary of the coastal margin may in due course move inland, if the trail rolls back under proposals in this report to respond to coastal change.

N

© Crown copyright and database right 2020. All rights reserved. Natural England Licence No. 100022021

This map is intended to be printed in colour at A3 size.

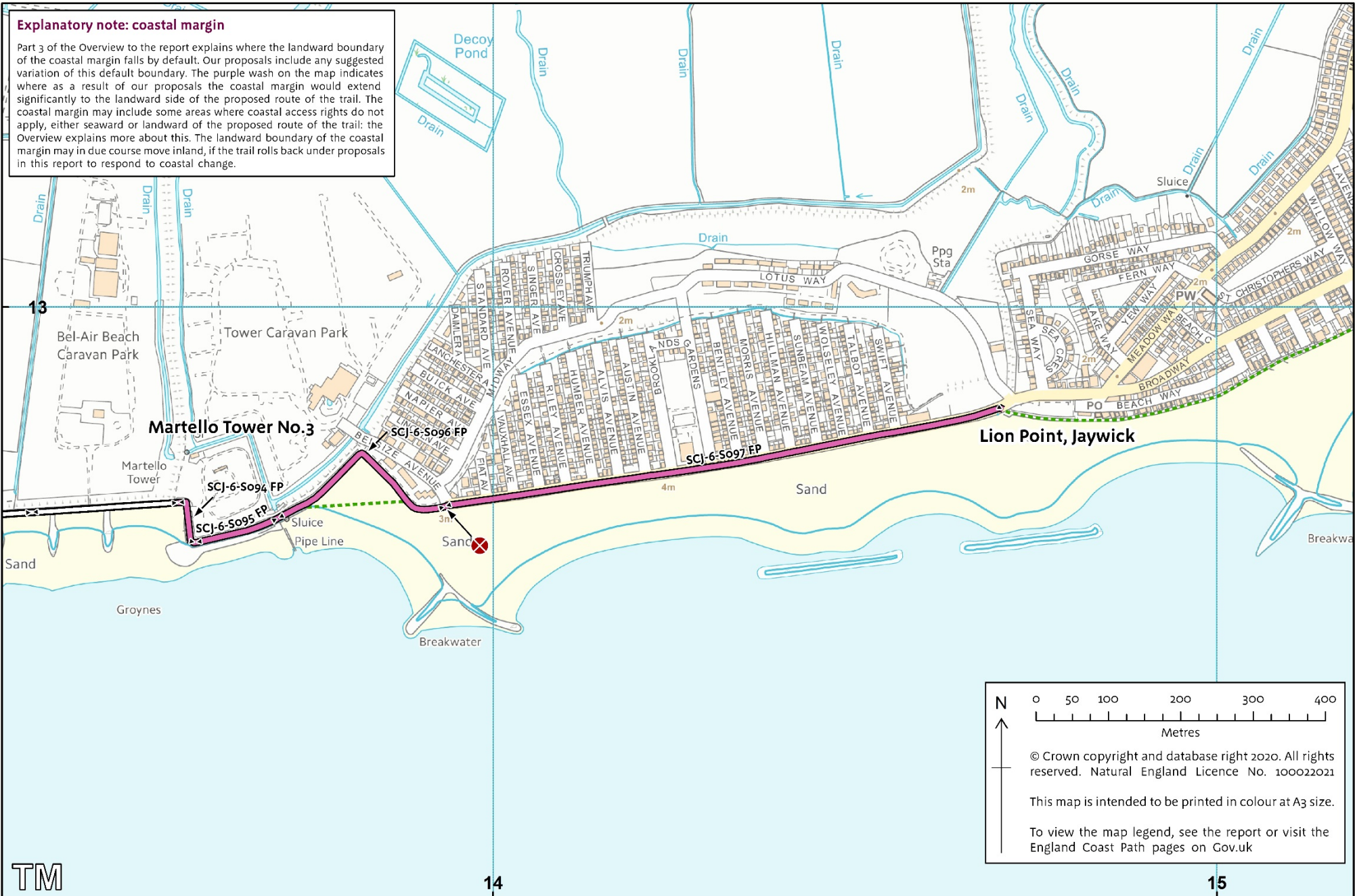
To view the map legend, see the report or visit the England Coast Path pages on Gov.uk



Map SCJ 6f: Martello Tower No.3 to Lion Point, Jaywick

Explanatory note: coastal margin

Part 3 of the Overview to the report explains where the landward boundary of the coastal margin falls by default. Our proposals include any suggested variation of this default boundary. The purple wash on the map indicates where as a result of our proposals the coastal margin would extend significantly to the landward side of the proposed route of the trail. The coastal margin may include some areas where coastal access rights do not apply, either seaward or landward of the proposed route of the trail: the Overview explains more about this. The landward boundary of the coastal margin may in due course move inland, if the trail rolls back under proposals in this report to respond to coastal change.



Map SCJ 6f: Martello Tower No.3 to Lion Point, Jaywick

N

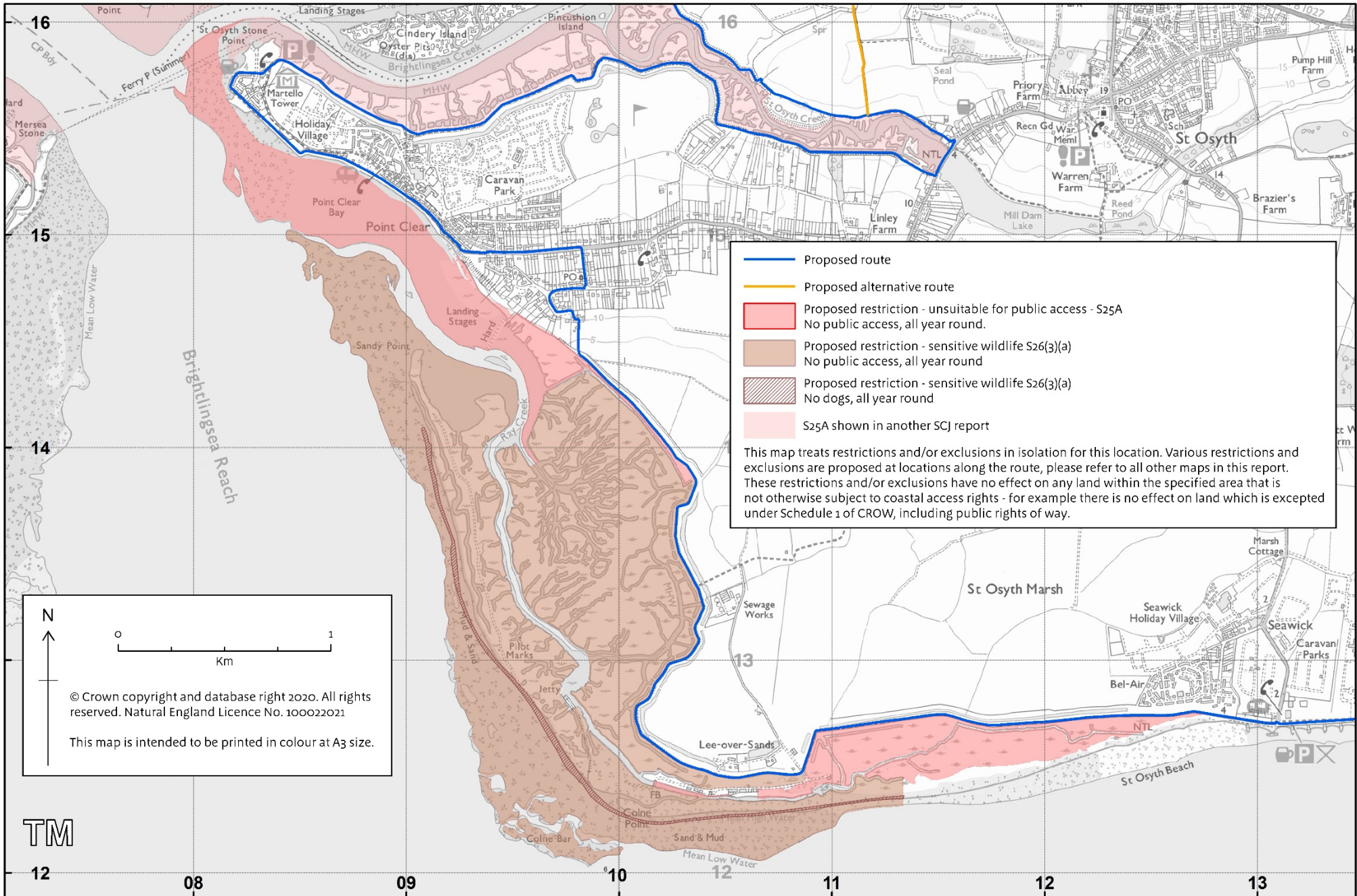
0 50 100 200 300 400
 Metres

© Crown copyright and database right 2020. All rights reserved. Natural England Licence No. 100022021

This map is intended to be printed in colour at A3 size.

To view the map legend, see the report or visit the England Coast Path pages on Gov.uk

Directions map SCJ 6A: Saltmarsh and flat, and Colne Point NNR



— Proposed route

— Proposed alternative route

Proposed restriction - unsuitable for public access - S25A
 No public access, all year round.

Proposed restriction - sensitive wildlife S26(3)(a)
 No public access, all year round

Proposed restriction - sensitive wildlife S26(3)(a)
 No dogs, all year round

S25A shown in another SCJ report

This map treats restrictions and/or exclusions in isolation for this location. Various restrictions and exclusions are proposed at locations along the route, please refer to all other maps in this report. These restrictions and/or exclusions have no effect on any land within the specified area that is not otherwise subject to coastal access rights - for example there is no effect on land which is excepted under Schedule 1 of CROW, including public rights of way.

N

0 1
 Km

© Crown copyright and database right 2020. All rights reserved. Natural England Licence No. 100022021

This map is intended to be printed in colour at A3 size.

TM

Directions map SCJ 6A: Saltmarsh and flat, and Colne Point NNR