



EU Type Examination Certificate Number: **0120/ SGS0459**

Clou Global Technology Co., Ltd.

14th Floor Block A
CLOU Building
Baoshen Road, Xili Street
Nanshan District
Shenzhen, China

Instrument Identification:
CL710K22 (V01R)

Instrument Traceable Number
0120/ SGS0459

Single Phase, Active Import/ Export, Outdoor, Electricity Meter

has been assessed and certified as meeting the requirements of

EU Directive 2014/32/EU **on Measuring Instruments Annex II, Module B**

It is certified that the manufacturer's technical design and specimen for the above instrument has been examined and, based on the evidence submitted, it is considered that the instrument conforms to the requirements of Annex V of EU Directive 2014/32/EU

This certificate must be used in conjunction with a certificate covering the product verification as required in Annex II, Module D or Annex II, Module F


This certificate is valid until 11th April 2026
Issue 1

Certification is based on report number(s) SZES151000342001 dated 5th April 2016,
SZES151000342001/iss2 dated 10th April 2017, SZES151000342001/iss3 dated 25th May 2018
SHES191202790901 dated 6th May 2020
EMA221646/1, EMA280196/1

Authorised Signature


SGS United Kingdom Limited, Notified Body 0120
Unit 202B Worle Parkway, Weston-super-Mare, BS22 6WA UK
t +44 (0)1934 522917 f +44 (0)1934 522137 www.sgs.com

Contact Address
SGS United Kingdom Ltd, Units 12A & 12B, South Industrial Estate, Bowburn, Durham, DH6 5AD UK
t +44 (0)191 377 2000 f +44 (0)191 377 2020 www.sgs.com

	EU-Type Examination Certificate Number:	
	0120/ SGS0459	
	Issue Number: 1	Dated: 12 th June 2020


1. Technical Data

Manufacturer	CLOU Global Technology Co., Ltd.
Meter Type	CL710K22 (V01R)
Voltage Rating (<i>Un</i>)	220-240V
Current Rating (<i>I_{min}</i> – <i>I_{ref}</i> (<i>I_{max}</i>))	0.05-5(100)A, 0.05-5(80)A, 0.15-5(100)A
Frequency (<i>Fn</i>)	50/60Hz
Active Accuracy Class (<i>kWh</i>)	C (kWh)
Type of circuit	1p2w
Temperature Range	-40°C to +70°C
Software/ Firmware Version No Identification Location	08 LCD
Bill Of Materials Number	Keyboard:26064696000001 Non-Keybaord:26064696000003
IP Rating	IP54
Insulation Protective Class	Class II
Mechanical Environment	M1
Electromagnetic Environment	E2
LED Pulse Constant	1000imp/kWh, 1600 imp/ kWh
Impulse Voltage Rating	6kV
AC Voltage Rating	4kV
Main Cover Sealing Type	Wire & Crimp
Integrity of meter	Inaccessible without breaking seals
Intended Location of the Meter	Outdoor
Type of Register	LCD
Terminal Arrangement(s)	BS

	EU-Type Examination Certificate Number:	
	0120/ SGS0459	
	Issue Number: 1	Dated: 12 th June 2020


2. Photographs of Meter and Sealing Plan



	EU-Type Examination Certificate Number:	
	0120/ SGS0459	
	Issue Number: 1	Dated: 12 th June 2020

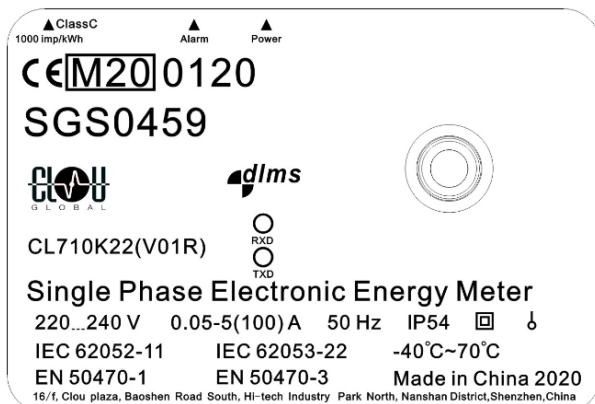
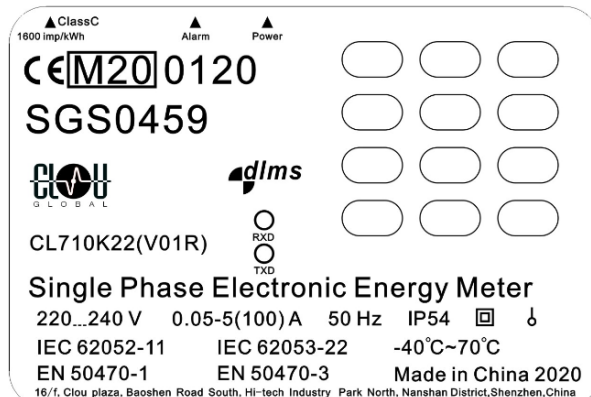
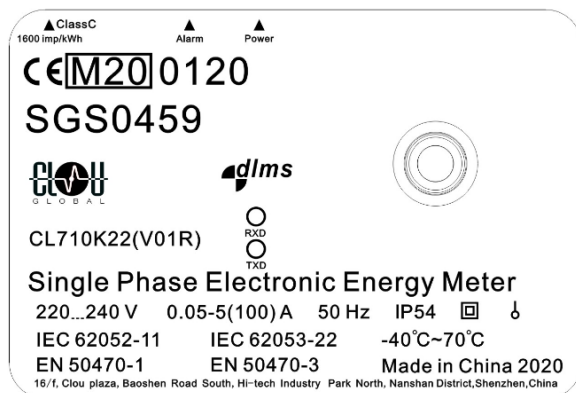


Main cover seals

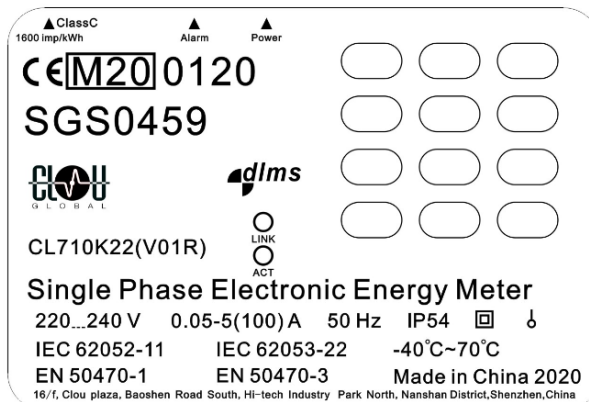
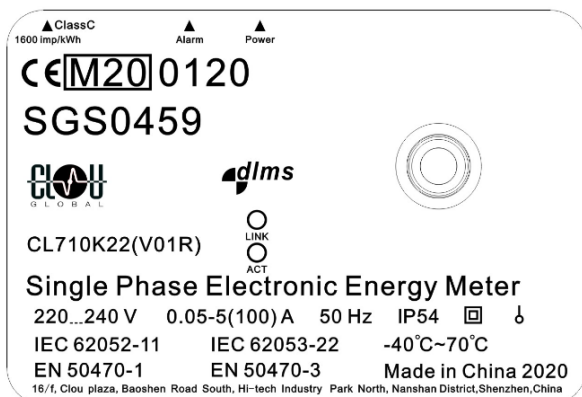
	EU-Type Examination Certificate Number:	
	0120/ SGS0459	
	Issue Number: 1	Dated: 12 th June 2020

3. Nameplates


PLC Version

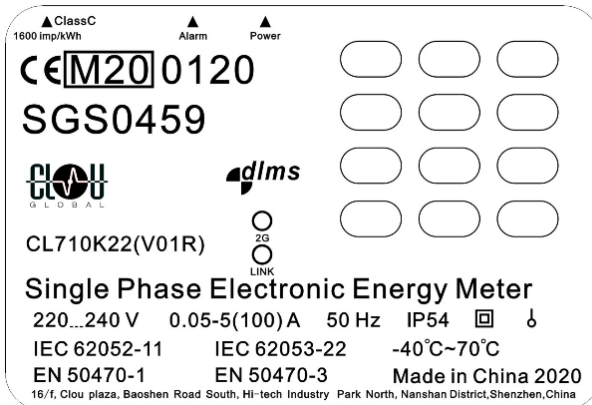
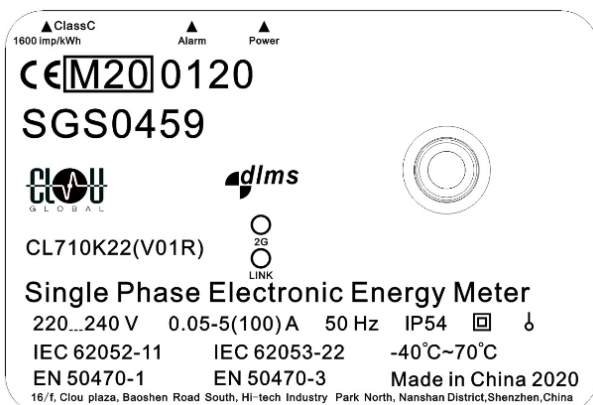



RF Version



GPRS Version

	EU-Type Examination Certificate Number:	
	0120/ SGS0459	
	Issue Number: 1	Dated: 12 th June 2020



	EU-Type Examination Certificate Number:	
	0120/ SGS0459	
	Issue Number: 1	Dated: 12 th June 2020

4. Influence factors for temperature, frequency and voltage

Current	PF Cos	-40°C	-25°C	-10°C	5°C	30°C	40°C	55°C	70°C
I _{min}	1.0	0.66	0.41	0.23	0.17	0.09	0.12	0.16	0.19
I _{tr}	1.0	0.64	0.40	0.26	0.13	0.07	0.09	0.17	0.19
10I _{tr}	1.0	0.65	0.41	0.26	0.13	0.03	0.06	0.14	0.15
I _{max}	1.0	0.47	0.35	0.28	0.23	0.19	0.18	0.17	0.18
I _{tr}	0.5ind	0.57	0.36	0.21	0.13	0.10	0.11	0.19	0.19
10I _{tr}	0.5ind	0.64	0.37	0.24	0.13	0.06	0.08	0.08	0.15
I _{max}	0.5ind	0.60	0.51	0.46	0.43	0.40	0.39	0.37	0.38
I _{tr}	0.8cap	0.56	0.37	0.22	0.11	0.07	0.10	0.16	0.16
10I _{tr}	0.8cap	0.59	0.38	0.23	0.12	0.04	0.06	0.13	0.14
I _{max}	0.8cap	0.49	0.39	0.32	0.28	0.25	0.24	0.22	0.23

During the type approval examination the influence factors for temperature, frequency and voltage are determined per load point. The table above represents the sum of the square values per load, determined via the following formula:-


$$\delta e(T, U, f) = \sqrt{(\delta e^2(T, I, \cos\varphi) + \delta e^2(U, I, \cos\varphi) + \delta e^2(f, I, \cos\varphi))}$$

where

$\delta e(T, I, \cos\varphi)$ = Additional error due to variation of the temperature at the same load

$\delta e(U, I, \cos\varphi)$ = Additional error due to variation of the voltage at the same load

$\delta e(f, I, \cos\varphi)$ = Additional error due to variation of the frequency at the same load


	EU-Type Examination Certificate Number:	
	0120/ SGS0459	
	Issue Number: 1	Dated: 12 th June 2020

5. Annex of Variants

Product Variant Identification Details:

Type Designation	Description of meter
CL710K22 (V01R)	1P2W, 220-240V, 0.05-5(80)A 0.05-5(100)A, 0.15-5(100)A Optional detachable communication modules: PLC module, RF module, GPRS module

Modifications to the meter(s) described according to approval No.**0120/ SGS0459** must be notified to the issuing body to confirm the meter(s) continuing compliance to the relevant pattern approval standard(s).

	EU-Type Examination Certificate Number:	
	0120/ SGS0459	
	Issue Number: 1	Dated: 12 th June 2020

6. Document Revision History

Issue	Date	Comments
1	12/06/2020	Initial Issue

"This document is issued by the Company subject to its General Conditions for Certification Services, available on request or accessible at <http://www.sgs.com/en/Terms-and-Conditions.aspx>.

Attention is drawn to the limitation of liability, indemnification and jurisdiction issues defined therein. Any holder of this document is advised that information contained hereon reflects the Company's findings at the time of its intervention only and within the limits of Client's instructions, if any. The Company's sole responsibility is to its Client and this document does not exonerate parties to a transaction from exercising all their rights and obligations under the transaction documents. This document cannot be reproduced except in full, without prior written approval of the Company. Any unauthorized alteration, forgery or falsification of the content or appearance of this document is unlawful and offenders may be prosecuted to the fullest extent of the law.

Unless otherwise stated the results shown in this test report refer only to the sample(s) tested *and such sample(s) are retained for 28 days only*.

END OF CERTIFICATE