



EU Type Examination Certificate Number: **0120/SGS0437**

**BTICINO Spa**

Viale Borri, 231  
21100 Varese  
Italy

Instrument Identification:

**CE2DF3DTMID, CE2DF30PMID, CE2DF3MTMID  
F21DM63N, F20DM63N**

**Single Phase, Active Import/Export kWh, DIN Rail, Electricity Meter**

Instrument Traceable Number  
**0120/SGS0437**

has been assessed and certified as meeting the requirements of

**EU Directive 2014/32/EU**  
**on Measuring Instruments Annex II, Module B**

It is certified that the manufacturer's technical design and specimen for the above instrument has been examined and, based on the evidence submitted, it is considered that the instrument conforms to the requirements of Annex V of EU Directive 2014/32/EU

This certificate must be used in conjunction with a certificate covering the product verification as required in Annex II, Module D or Annex II, Module F


This certificate is valid for 10 years from 4<sup>th</sup> December 2019 until 3<sup>rd</sup> December 2029  
Issue 1

Certification is based on report number(s) EMA271234/1 dated 7<sup>th</sup> November 2019

Authorised Signature


SGS United Kingdom Limited, Notified Body 0120  
Unit 202B Worle Parkway, Weston-super-Mare, BS22 6WA, UK  
t +44 (0)1934 522917 f +44 (0)1934 522137 [www.sgs.com](http://www.sgs.com)

Contact Address  
SGS United Kingdom Limited, Units 12A & 12B, South Industrial Estate, Bowburn, Durham, DH6 5AD, UK  
t +44 (0)191 377 2000 f +44 (0)191 377 2020 [www.sgs.com](http://www.sgs.com)

	EU-Type Examination Certificate Number:	
	<b>0120/SGS0437</b>	
	Issue Number: 1	Dated: 4 <sup>th</sup> December 2019

## 1. Technical Data

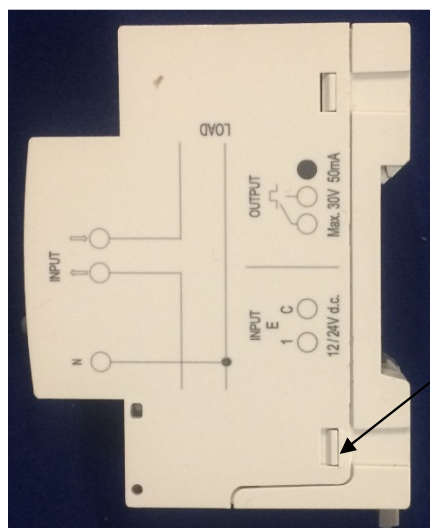
Manufacturer	BTICINO Spa
Meter Type's	CE2DF30PMID, CE2DF3DTMID, CE2DF3MTMID F20DM63N, F21DM63N
Voltage Rating ( <i>Un</i> )	230V
Current Rating ( <i>I<sub>min</sub></i> – <i>I<sub>ref</sub></i> ( <i>I<sub>max</sub></i> ))	0.5-10(63)A,
Frequency ( <i>Fn</i> )	50Hz
Active Accuracy Class ( <i>kWh</i> )	B (kWh)
Type of circuit	1p2w
Temperature Range	-25 °C to +55 °C
Software/ Firmware Version No's	CE2DF30PMID: <b>V1.1</b> CE2DF3DTMID: <b>V1.1</b> CE2DF3MTMID: <b>V1.1</b> F20DM63N: <b>V1.1</b> F21DM63N: <b>V1.1</b>
CRC Checksum No's	CE2DF30PMID: <b>58204</b> CE2DF3DTMID: <b>58204</b> CE2DF3MTMID: <b>58204</b> F20DM63N: <b>58204</b> F21DM63N: <b>58204</b>
Identification Location	LCD
Bill Of Materials No's	B004235AD B004300AB B004429AC B004430AC
IP Rating	Meter to be installed in a suitable IP rated enclosure as described in installation manual
Insulation Protective Class	Class II
LED Pulse Constant	1Wh/imp
Impulse Voltage Rating	6kV
AC Voltage Rating	4kV
Main Cover Sealing Type	2 x clips ultrasonically welded
Integrity of meter	Inaccessible without breaking seals
Intended Location of the Meter	Indoor
Type of Register	LCD
Terminal Arrangement(s)	DIN
Location of Manufacturers Address	Nameplate & Documentation

	EU-Type Examination Certificate Number:	
	<b>0120/SGS0437</b>	
	Issue Number: 1	Dated: 4 <sup>th</sup> December 2019

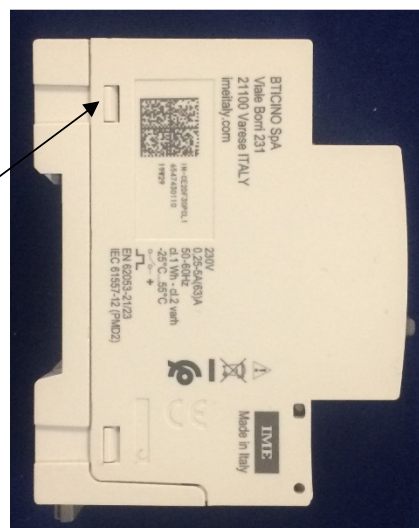
## 2. Photographs of Meter and Sealing Plan




Terminal Cover  
Sealing Points



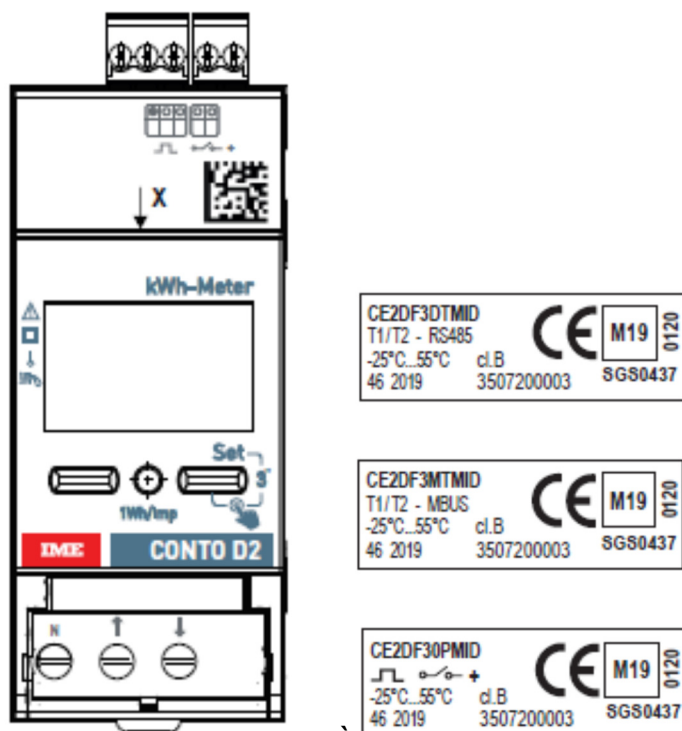
Main Cover  
Sealing Points

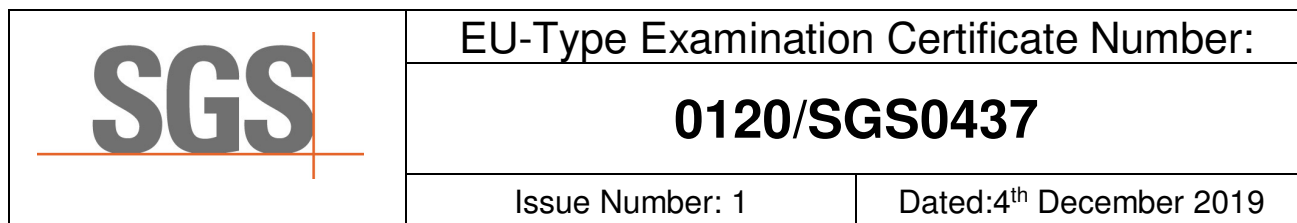


	EU-Type Examination Certificate Number:	
	<b>0120/SGS0437</b>	
	Issue Number: 1	Dated: 4 <sup>th</sup> December 2019

### 3. Nameplates & Markings

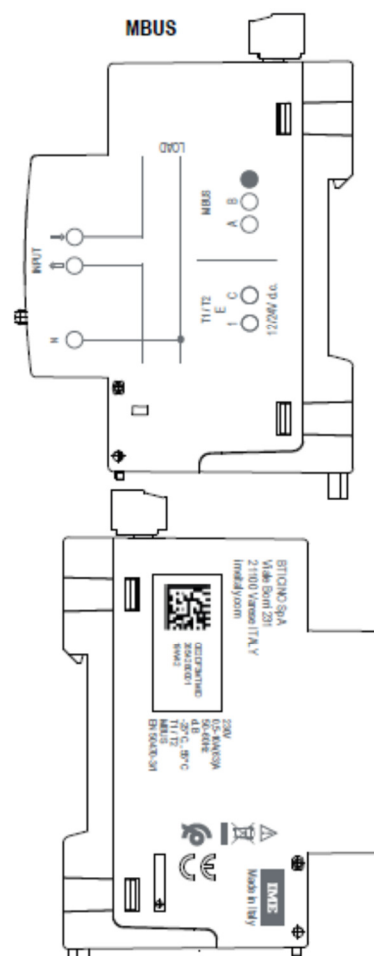
**CE2DF3xxMID**






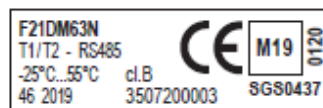
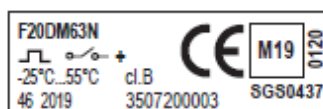
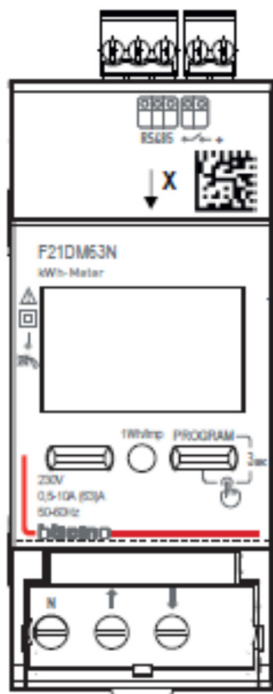
**0120/SGS0437**

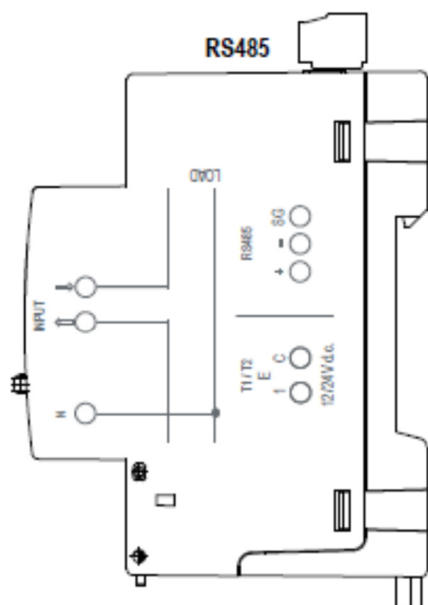
Dated:4<sup>th</sup> December 2019



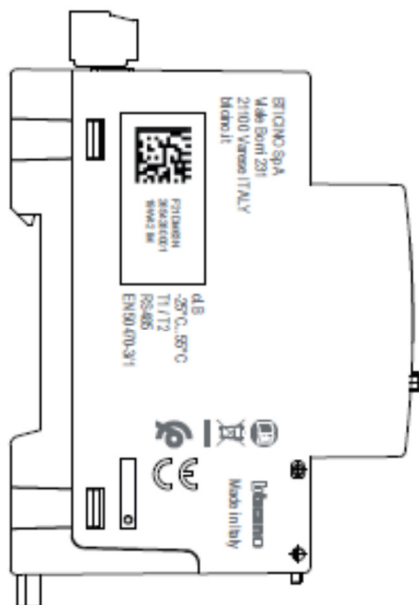
	EU-Type Examination Certificate Number:	
	<b>0120/SGS0437</b>	
	Issue Number: 1	Dated: 4 <sup>th</sup> December 2019

## F2xDM763N

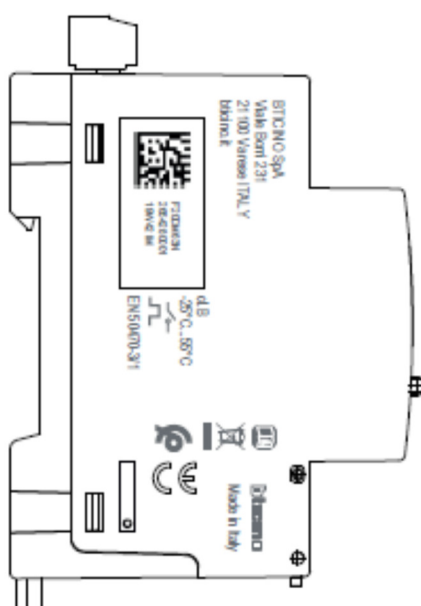
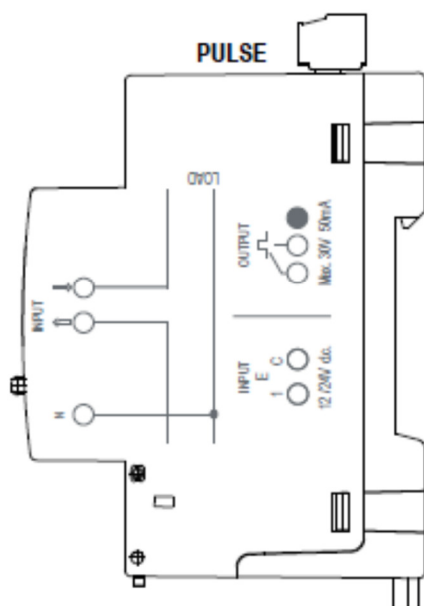





vista lato destro



vista lato sinistro



	EU-Type Examination Certificate Number:	
	<b>0120/SGS0437</b>	
	Issue Number: 1	Dated: 4 <sup>th</sup> December 2019

#### 4. Calculation of the composite error/ MPE

During the type approval examination the influence factors for temperature, frequency and voltage are determined per load point. The table below represents the sum of the square values per load, determined via the following formula:-


$$\delta e(T, U, f) = \sqrt{(\delta e^2(T, I, \cos\phi) + \delta e^2(U, I, \cos\phi) + \delta e^2(f, I, \cos\phi))}$$

where

$\delta e(T, I, \cos\phi)$  = Additional error due to variation of the temperature at the same load  
 $\delta e(U, I, \cos\phi)$  = Additional error due to variation of the voltage at the same load  
 $\delta e(f, I, \cos\phi)$  = Additional error due to variation of the frequency at the same load

		Influence Factors for Temperature. Frequency & Voltage					
Current	PF Cos	-25°C	-10°C	5°C	30°C	40°C	55°C
I <sub>min</sub>	1.0	0.65	0.24	0.18	0.12	0.15	0.18
I <sub>tr</sub>	1.0	0.51	0.21	0.05	0.15	0.20	0.21
10I <sub>tr</sub>	1.0	0.50	0.25	0.03	0.15	0.21	0.21
I <sub>max</sub>	1.0	0.36	0.18	0.09	0.10	0.11	0.10
I <sub>tr</sub>	0.5ind	0.17	0.20	0.26	0.27	0.27	0.24
10I <sub>tr</sub>	0.5ind	0.10	0.17	0.24	0.25	0.24	0.12
I <sub>max</sub>	0.5ind	0.43	0.45	0.49	0.41	0.33	0.33
I <sub>tr</sub>	0.8cap	0.93	0.58	0.30	0.07	0.08	0.12
10I <sub>tr</sub>	0.8cap	0.76	0.43	0.17	0.11	0.18	0.24
I <sub>max</sub>	0.8cap	0.63	0.37	0.20	0.15	0.15	0.16




	EU-Type Examination Certificate Number:	
	<b>0120/SGS0437</b>	
	Issue Number: 1	Dated:4 <sup>th</sup> December 2019

## 5. Annex of Variants

Product Variant Identification Details:

Type Designation	Description of meter
CE2DF30PMID	Single Phase, 230V, 10(63)A, pulse output
CE2DF3DTMID	Single Phase 230V, 10(63)A, dual tariff, RS485 Modbus communication
CE2DF3MTMID	Single Phase, 230V, 10(63)A, dual tariff, MBus communication
F20DM63N	Single Phase, 230V, 10(63)A, pulse output
F21DM63N	Single Phase 230V, 10(63)A, dual tariff, RS485 Modbus communication

Modifications to the meter(s) described according to approval No.**0120/SGS0437** must be notified to the issuing body to confirm the meter(s) continuing compliance to the relevant pattern approval standard(s).

	EU-Type Examination Certificate Number:	
	<b>0120/SGS0437</b>	
	Issue Number: 1	Dated:4 <sup>th</sup> December 2019

## 6. Document Revision History

Issue	Date	Comments
1	04/12/2019	Initial Issue

This document is issued by the Company subject to its General Conditions for Certification Services, available on request or accessible at <http://www.sgs.com/en/Terms-and-Conditions.aspx>.

Attention is drawn to the limitation of liability, indemnification and jurisdiction issues defined therein. Any holder of this document is advised that information contained hereon reflects the Company's findings at the time of its intervention only and within the limits of Client's instructions, if any. The Company's sole responsibility is to its Client and this document does not exonerate parties to a transaction from exercising all their rights and obligations under the transaction documents. This document cannot be reproduced except in full, without prior written approval of the Company. Any unauthorized alteration, forgery or falsification of the content or appearance of this document is unlawful and offenders may be prosecuted to the fullest extent of the law.

Unless otherwise stated the results shown in this test report refer only to the sample(s) tested *and such sample(s) are retained for 28 days only*.

**END OF CERTIFICATE**