

Department for Environment, Food and Rural Affairs

South West Deeps (East) MCZ

Feature Map

May 2019

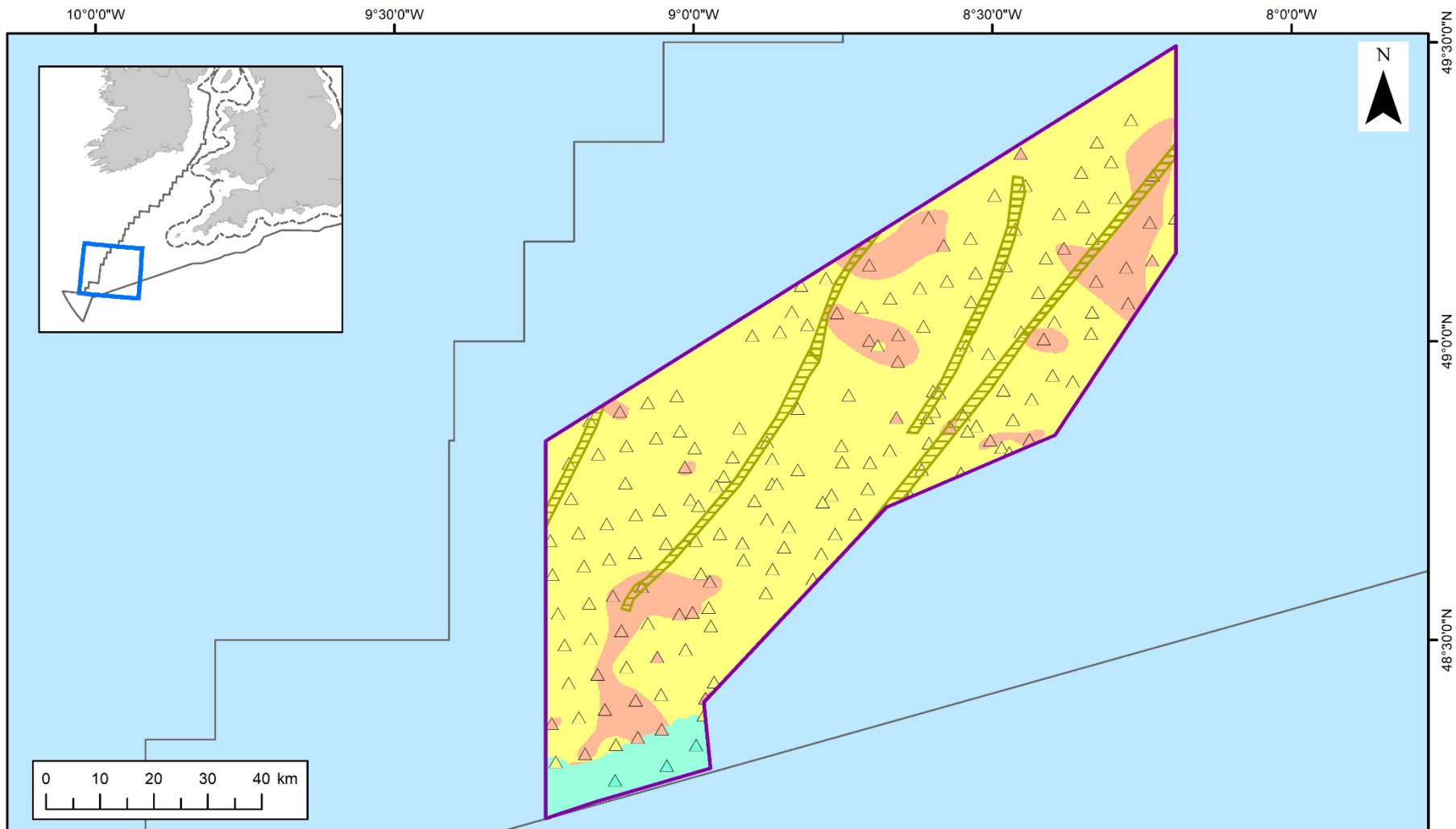
The following map shows where the features protected by this Marine Conservation Zone (MCZ) are located.

There is one map showing the broad-scale habitats and any features of conservation importance. Broad scale habitats represent habitats, and associated species that live on and in the habitat. Features of conservation importance are specific habitats and species that are known to be rare, threatened or declining in our seas.

A range of different types of surveys have been used to create these maps. The symbols on the map show where a sample has been taken, or where a feature has been recorded in a specific location. For many features, there is also shading to show the extent of the area in which the feature is found. For broad scale habitats, this is created from survey data and using mathematical models. For FOCI the extent is only shown where a survey has confirmed that the feature exists in this whole area. More detailed information on the techniques used and the features themselves can be found here:

<http://jncc.defra.gov.uk/page-7119>

Mapped data on features correct at the time of publishing, for the most up to date feature data please consult the JNCC website (<http://jncc.defra.gov.uk/page-4524>).



**South-West Deeps (East) MCZ
Feature Map**

- MCZ boundary
- Territorial Sea Limit
- Exclusive Economic Zone
- Land
- Sea

Features designated in 2019

- Celtic Sea Relict Sandbanks
- Subtidal coarse sediment
- Subtidal sand
- Deep-sea bed

- Groundtruthing sampling points, such as grab sampling, drop down video or core sampling
- Shaded areas represent habitats mapped according to data originating from surveys and mathematical models

© JNCC 2019. Contains public sector information licensed under the Open Government Licence v3.0, including United Kingdom Hydrographic Office and Ordnance Survey data © Crown copyright (2015). 2015 BGS PSA Sample points and MB0102 Geological and Geomorphological Features contains British Geological survey materials © NERC. MB0120 Survey species data and habitat map © Defra. Contains data from EUSeaMap2016, available from EMODnet Seabed Habitats. Projection: WGS84UTM30N, Inset: BNG.