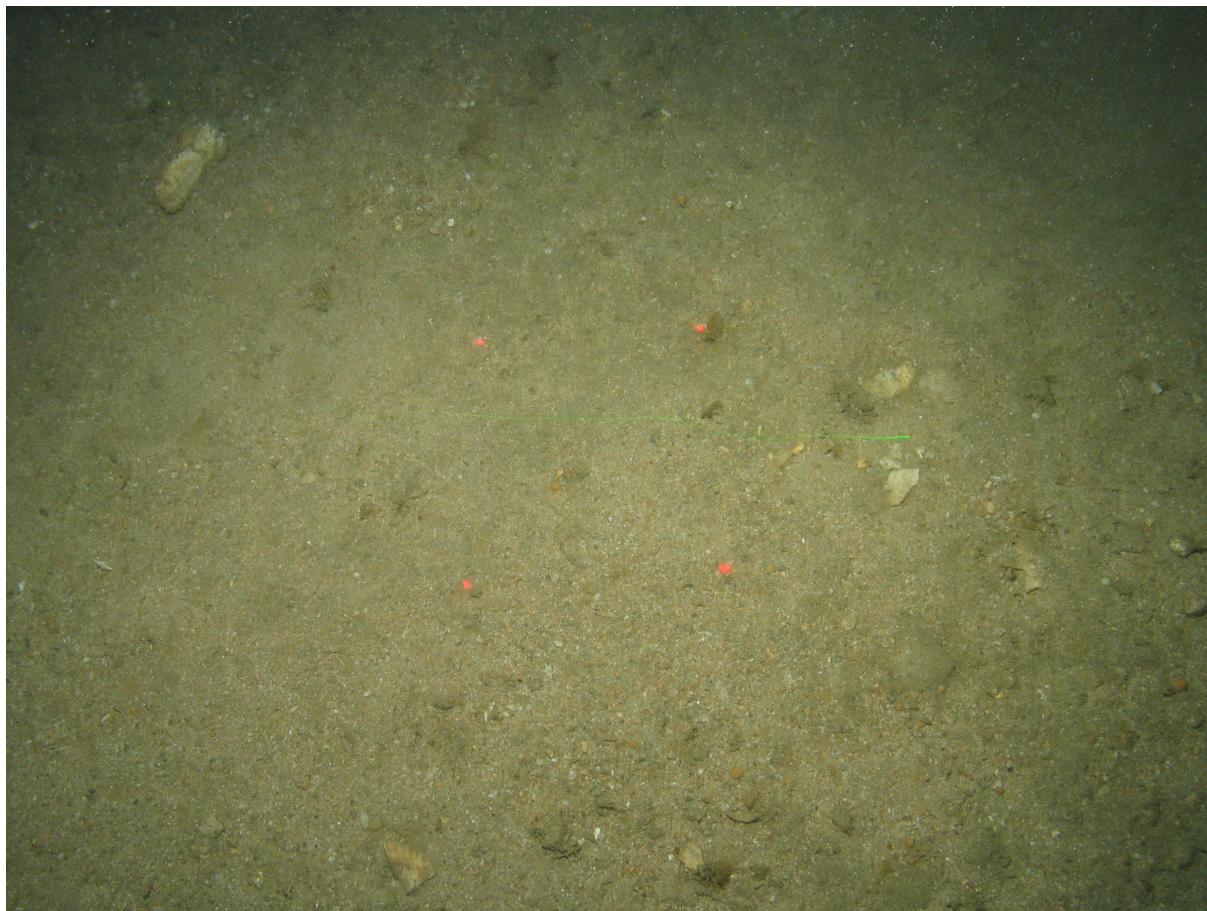


Department for Environment, Food and Rural Affairs

## South of the Isles of Scilly Marine Conservation Zone

*This document sets out why this site is important, the features protected and general management information.*

**31 May 2019**



**Subtidal coarse sediment / subtidal mixed sediments habitat mosaic © JNCC/Cefas**

### Overview

This site became a Marine Conservation Zone (MCZ) in May 2019. This means that specific features within this area are protected and, where necessary, regulators will manage marine activities.

## Where is the site?

The South of the Isles of Scilly MCZ is located in the Western Channel and Celtic Sea region, approximately 15 km to the south of the Isles of Scilly. It straddles the 12 nautical mile territorial sea limit. The site measures approximately 132 km<sup>2</sup> and depths range between 50 and 100 metres, with the western tip dipping below the 100 metre depth contour.

## Why is the site important?

MCZs, together with other types of marine protected areas, will form the UK contribution to an international network of protected sites in the north east Atlantic. The network will help to deliver the government's vision of clean, healthy, safe, productive and biologically diverse oceans and seas. MCZs protect typical, rare and declining habitats and species found in our seas.

The seabed within the South of the Isles of Scilly site is characterised by subtidal sand interspersed with a mosaic of subtidal mixed sediments and subtidal coarse sediment. The varied nature of the seabed means it supports a wide range of animals, both on and in the sediment, such as worms, bivalve molluscs (for example the bean mussel and great scallop), starfish, anemones, sea fans and sea urchins. Fish species such as the sandy dogfish, sole, megrim and three bearded rockling have also been recorded within the site.

Fan mussels can be found within the site. This is a large triangular mussel that can grow to up to 50 cm in length, making it one of the largest shells found in British waters. Fan mussels are very sensitive to disturbance and are considered one of the most endangered animals of their kind in UK waters.

Designation of this site as a Marine Conservation Zone protects the following features. You can find detailed information about each of the protected features on the [JNCC website](#).

Protected features	General management approach
Fan mussel ( <i>Atrina fragilis</i> )	Recover to favourable condition
Subtidal coarse sediment / subtidal mixed sediments mosaic habitat	
Subtidal sand	

## Management of the site

The General Management Approach for all three protected features of this site is to 'Recover to favourable condition'. To ensure that the site achieves its conservation objectives, some activities may need additional management. Activities and the

management measures used to regulate them may need to change if new evidence becomes available.

Most marine activity is already regulated by the relevant regulatory bodies (see section below). There is an existing legal framework that regulators use to manage fishing, offshore industry, recreation and pollution. This also applies in MCZs.

Regulators will manage each site according to the features and activities in, or near, a specific area. Management measures will be implemented at sites most at risk of damage first, regulating only those activities which have a detrimental impact on the designated features. Any management measures that are required for MCZs will be applied on a case-by-case basis.

Management in MCZs can take several different forms, including introducing voluntary measures, use of the existing planning and licensing framework, specific byelaws and orders. There has to be public consultation on permanent byelaws and orders. For activities that already need a marine licence, regulators consider the MCZ in their decision as soon as the site is consulted on. Find out more about marine licensing in MCZs at <https://www.gov.uk/government/publications/marine-conservation-zones-mczs-and-marine-licensing>.

## Regulators

This table lists the authorities responsible for MCZs and the activities they manage.

Lead regulator	What it manages
<b>Inshore Fisheries and Conservation Authorities (IFCAs)</b> <a href="http://www.association-ifca.org.uk">http://www.association-ifca.org.uk</a>	<ul style="list-style-type: none"> <li>• Fisheries in the inshore area (0-6 nautical miles (nm)) including commercial fisheries and recreational sea angling.</li> </ul>
<b>Marine Management Organisation (MMO)</b> <a href="https://www.gov.uk/government/organisations/marine-management-organisation">https://www.gov.uk/government/organisations/marine-management-organisation</a>	<ul style="list-style-type: none"> <li>• Fisheries within British limits around the coast of England.</li> <li>• Licensable activities such as construction, alteration or improvement of works, dredging and disposal, other removals or deposits, incineration or the scuttling of vessels within England's marine area.</li> <li>• Section 36 (of the Electricity Act 1989) Consents and Safety Zones for offshore renewable energy installations producing up to 100MW.</li> <li>• Activities requiring a marine wildlife licence.</li> </ul>
<b>Environment Agency (EA)</b> <a href="https://www.gov.uk/government/organisations/environment-agency">https://www.gov.uk/government/organisations/environment-agency</a>	<ul style="list-style-type: none"> <li>• Fisheries for migratory and freshwater fish.</li> <li>• Coastal protection and flood management.</li> <li>• Water quality, including environmental permits for discharges from terrestrial sources.</li> </ul>

<p><b>Oil and Gas Authority</b>  <a href="https://www.ogauthority.co.uk/">https://www.ogauthority.co.uk/</a></p>	<ul style="list-style-type: none"> <li>• Licensing for exploration and exploitation of oil and gas reserves.</li> </ul>
<p><b>Department for Business, Energy and Industrial Strategy (BEIS)</b>  <a href="https://www.gov.uk/government/organisations/department-for-business-energy-and-industrial-strategy">https://www.gov.uk/government/organisations/department-for-business-energy-and-industrial-strategy</a></p> <p><b>Offshore Petroleum Regulator for Environment and Decommissioning (OPRED) – Part of BEIS</b></p>	<ul style="list-style-type: none"> <li>• Oil and gas related activities</li> <li>• Renewable energy related activities</li> <li>• Environmental approvals and consents for offshore oil and gas related activities, Carbon Capture and Storage and Gas Unloading and Storage, and decommissioning activities.</li> </ul>
<p><b>Harbour Authorities and Local Planning Authorities</b></p>	<ul style="list-style-type: none"> <li>• Harbour authorities have management responsibilities for ports and coastal waters within their limits.</li> <li>• Local planning authorities manage activities at the coast. These include coastal recreation, public rights of way (including the English Coastal Path), tourism, economic regeneration, flood protection, and planning and development on coasts and estuaries, including aquaculture in the intertidal zone.</li> </ul>
<p><b>Department for Transport (DfT)</b>  <a href="https://www.gov.uk/government/organisations/department-for-transport">https://www.gov.uk/government/organisations/department-for-transport</a></p>	<ul style="list-style-type: none"> <li>• Policy on environmental impacts associated with ports and shipping, including pollution from ships.</li> <li>• Policy on maritime safety including navigation safety.</li> </ul>
<p><b>Maritime and Coastguard Agency (MCA) - An Executive Agency of the Department for Transport</b>  <a href="https://www.gov.uk/government/organisations/maritime-and-coastguard-agency">https://www.gov.uk/government/organisations/maritime-and-coastguard-agency</a></p>	<ul style="list-style-type: none"> <li>• Vessel safety consents, including certification of seafarers and equipment.</li> </ul>
<p><b>Natural England (NE)</b>  <a href="https://www.gov.uk/government/organisations/natural-england">https://www.gov.uk/government/organisations/natural-england</a></p>	<ul style="list-style-type: none"> <li>• Establishment and management of the English Coastal path.</li> <li>• Activities requiring consents and ascents within or adjacent to Sites of Special Scientific Interest (SSSIs).</li> <li>• Activities requiring wildlife licences for terrestrial and intertidal species.</li> </ul>
<p><b>The Planning Inspectorate</b>  <a href="https://www.gov.uk/government/organisations/planning-inspectorate">https://www.gov.uk/government/organisations/planning-inspectorate</a></p>	<ul style="list-style-type: none"> <li>• Activities requiring Development Consent Orders under the Planning Act 2008, regarded as Nationally Significant Infrastructure Projects</li> </ul>



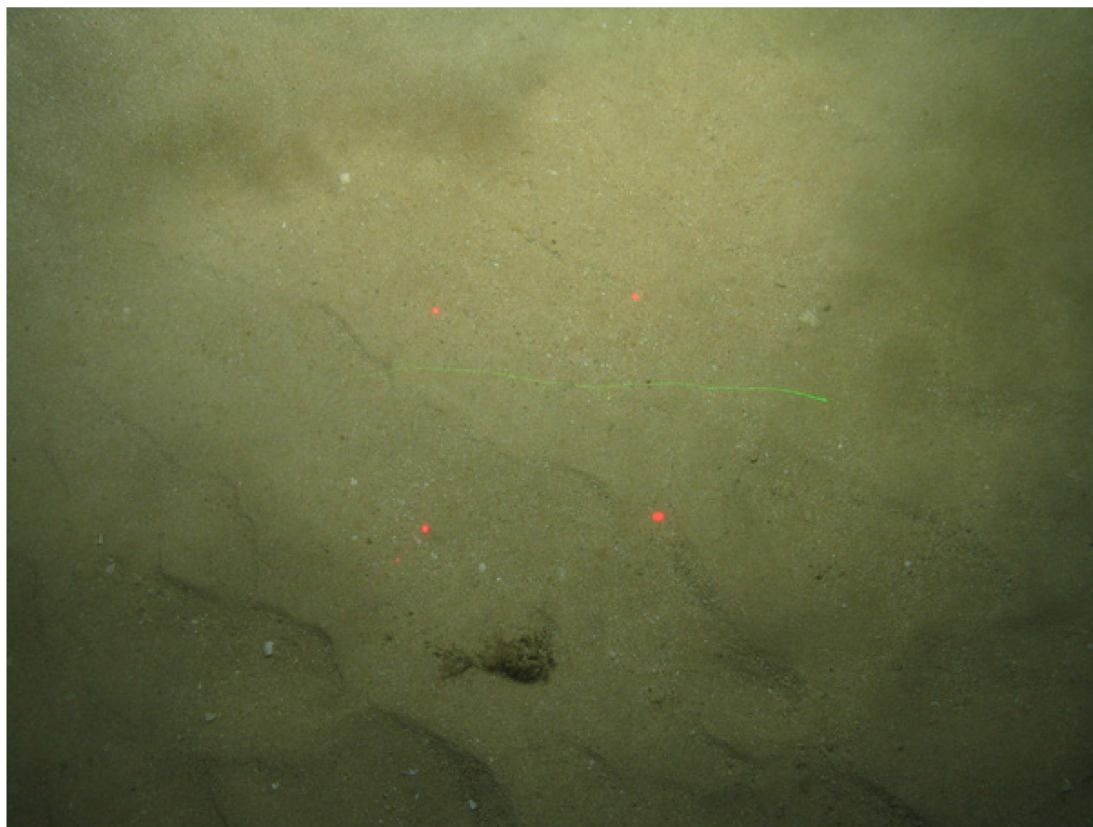
## Further information

Read about government policy on MCZs at:

<https://www.gov.uk/government/collections/marine-conservation-zone-designations-in-england>

Read the advice provided by the Joint Nature Conservation Committee on MCZs at:

<http://jncc.defra.gov.uk/page-7119>



Subtidal sand © JNCC/Cefas

**OGL**

© Crown copyright 2019

You may re-use this information (excluding logos) free of charge in any format or medium, under the terms of the Open Government Licence v.3. To view this licence visit

<http://www.nationalarchives.gov.uk/doc/open-government-licence/version/3/>.

This publication is available at [www.gov.uk/government/publications](http://www.gov.uk/government/publications)

Any enquiries regarding this publication should be sent to [defra.helpline@defra.gov.uk](mailto:defra.helpline@defra.gov.uk)