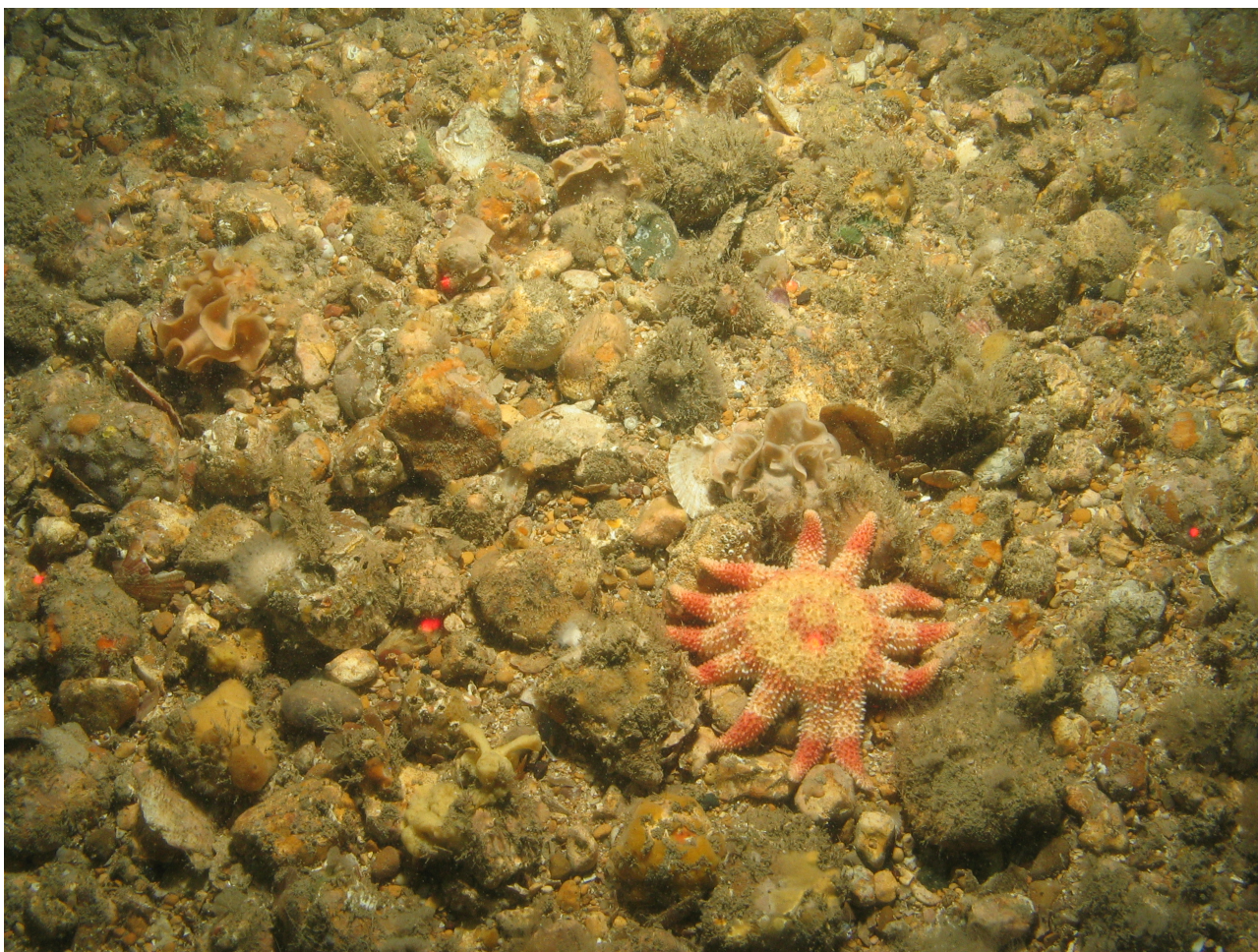


Bembridge Marine Conservation Zone

This document sets out why this site is important, the features protected and general management information.

31 May 2019



Sun star and bryozoans on subtidal coarse sediment © Crown Copyright

Overview

This site became a Marine Conservation Zone (MCZ) in May 2019. This means that specific features within this area are protected and, where necessary, regulators will manage marine activities.

Where is the site?

Bembridge MCZ is an inshore site that covers an area of approximately 75 km². The site lies adjacent to the east coast of the Isle of Wight from Nettlestone Point in the north to

Ventnor in the south. The site encompasses the intertidal and subtidal areas extending to the edge of the deep water channel approach into the Eastern Solent.

The site overlaps with the South Wight Maritime Special Area of Conservation (SAC) and will offer protection to species and features not currently protected by the SAC.

Why is the site important?

MCZs, together with other types of marine protected areas, will form the UK contribution to an international network of protected sites in the north east Atlantic. The network will help to deliver the government's vision of clean, healthy, safe, productive and biologically diverse oceans and seas. MCZs protect typical, rare or declining habitats and species found in our seas.

The area within Bembridge MCZ is highly diverse and includes a wide range of habitats, from rocky shores and intertidal sediments to deep water habitats supporting features such as sea pens and burrowing megafauna. Several species, including the peacock's tail seaweed, are at the most eastern edge of their distribution and are considered to seed other populations around the Isle of Wight.

The central area of the site is dominated by an extensive area of limestone and chalk bedrock providing a complex system of crevices, tunnels and pools supporting very diverse algae and invertebrate species such as crustaceans (such as crabs, lobsters and barnacles) and molluscs (such as mussels, oysters and cockles).

The large areas of subtidal mixed sediments act as a supporting substrate to several important features such as maerl beds. Maerl is a fragile, calcareous, red seaweed that forms large mats and provides shelter for many other species. It is highly sensitive to seabed activities and takes a long time to recover from damage.

The site would also protect the short-snouted seahorse as well as two species of stalked jellyfish.

Designation of this site as a Marine Conservation Zone protects the following features. You can find detailed information about each feature at <http://jncc.defra.gov.uk/page-4527>.

Protected features	General management approach
Sheltered muddy gravels	Maintain in favourable condition
Short-snouted seahorse (<i>Hippocampus hippocampus</i>)	
Stalked jellyfish (<i>Calvadosia campanulata</i>)	
Stalked jellyfish (<i>Haliclystus</i> species)	
Subtidal coarse sediment	
Subtidal sand	
Maerl beds	Recover to favourable condition
Native oyster (<i>Ostrea edulis</i>)	
Peacock's tail (<i>Padina pavonica</i>)	
Sea-pens and burrowing megafauna	
Seagrass beds	
Subtidal mixed sediments	
Subtidal mud	

Management of the site

Now that this site has been designated, some activities may need additional management. Activities and the management measures used to regulate them may need to change if new evidence becomes available.

Most marine activity is already regulated by the relevant regulatory bodies. There is an existing legal framework that regulators use to manage fishing, coastal development, recreation and pollution. This also applies in MCZs.

Regulators will manage each site according to the features and activities in, or near, a specific area. Management measures will be implemented at sites most at risk of damage first, regulating only those activities which have a detrimental impact on the designated features. Any management measures that are required for MCZs will be applied on a case-by-case basis.

Management in MCZs can take several different forms, including introducing voluntary measures, use of the existing planning and licensing framework, specific byelaws and orders. There has to be public consultation on permanent byelaws and orders. For

activities that already need a marine licence, regulators consider the MCZ in their decision as soon as the site is consulted on. Find out more about marine licensing in MCZs at <https://www.gov.uk/government/publications/marine-conservation-zones-mczs-and-marine-licensing>.

Regulators

This table lists the authorities responsible for MCZs and the activities they manage.

Lead regulator	What it manages
Inshore Fisheries and Conservation Authorities (IFCAs) http://www.association-ifca.org.uk	<ul style="list-style-type: none"> • Fisheries in the inshore area (0-6 nautical miles (nm)) including commercial fisheries and recreational sea angling.
Marine Management Organisation (MMO) https://www.gov.uk/government/organisations/marine-management-organisation	<ul style="list-style-type: none"> • Fisheries within British limits around the coast of England. • Licensable activities such as construction, alteration or improvement of works, dredging and disposal, other removals or deposits, incineration or the scuttling of vessels within England's marine area. • Section 36 (of the Electricity Act 1989) Consents and Safety Zones for offshore renewable energy installations producing up to 100MW. • Activities requiring a marine wildlife licence.
Environment Agency (EA) https://www.gov.uk/government/organisations/environment-agency	<ul style="list-style-type: none"> • Fisheries for migratory and freshwater fish. • Coastal protection and flood management. • Water quality, including environmental permits for discharges from terrestrial sources.
Oil and Gas Authority https://www.ogauthority.co.uk/	<ul style="list-style-type: none"> • Licensing for exploration and exploitation of oil and gas reserves.
Department for Business, Energy and Industrial Strategy (BEIS) https://www.gov.uk/government/organisations/department-for-business-energy-and-industrial-strategy Offshore Petroleum Regulator for Environment and Decommissioning (OPRED) – Part of BEIS	<ul style="list-style-type: none"> • Oil and gas related activities • Renewable energy related activities • Environmental approvals and consents for offshore oil and gas related activities, Carbon Capture and Storage and Gas Unloading and Storage, and decommissioning activities.
Harbour Authorities and Local Planning Authorities	<ul style="list-style-type: none"> • Harbour authorities have management responsibilities for ports and coastal waters within their limits.

	<ul style="list-style-type: none"> Local planning authorities manage activities at the coast. These include coastal recreation, public rights of way (including the English Coastal Path), tourism, economic regeneration, flood protection, and planning and development on coasts and estuaries, including aquaculture in the intertidal zone.
Department for Transport (DfT) https://www.gov.uk/government/organisations/department-for-transport	<ul style="list-style-type: none"> Policy on environmental impacts associated with ports and shipping, including pollution from ships. Policy on maritime safety including navigation safety.
Maritime and Coastguard Agency (MCA) - An Executive Agency of the Department for Transport https://www.gov.uk/government/organisations/maritime-and-coastguard-agency	<ul style="list-style-type: none"> Vessel safety consents, including certification of seafarers and equipment.
Natural England (NE) https://www.gov.uk/government/organisations/natural-england	<ul style="list-style-type: none"> Establishment and management of the English Coastal path. Activities requiring consents and ascents within or adjacent to Sites of Special Scientific Interest (SSSIs). Activities requiring wildlife licences for terrestrial and intertidal species.
The Planning Inspectorate https://www.gov.uk/government/organisations/planning-inspectorate	<ul style="list-style-type: none"> Activities requiring Development Consent Orders under the Planning Act 2008, regarded as Nationally Significant Infrastructure Projects

Further information

Read about government policy on MCZs at:

<https://www.gov.uk/government/collections/marine-conservation-zone-designations-in-england>

Read the advice provided by Natural England on MCZs at:

<http://publications.naturalengland.org.uk/publication/5703660445368320>



Subtidal coarse sediment © Crown Copyright

OGL

© Crown copyright 2019

You may re-use this information (excluding logos) free of charge in any format or medium, under the terms of the Open Government Licence v.3. To view this licence visit <http://www.nationalarchives.gov.uk/doc/open-government-licence/version/3/>.

This publication is available at www.gov.uk/government/publications

Any enquiries regarding this publication should be sent to defra.helpline@defra.gov.uk