

Department for Environment, Food and Rural Affairs

Bembridge MCZ

Feature Maps

May 2019

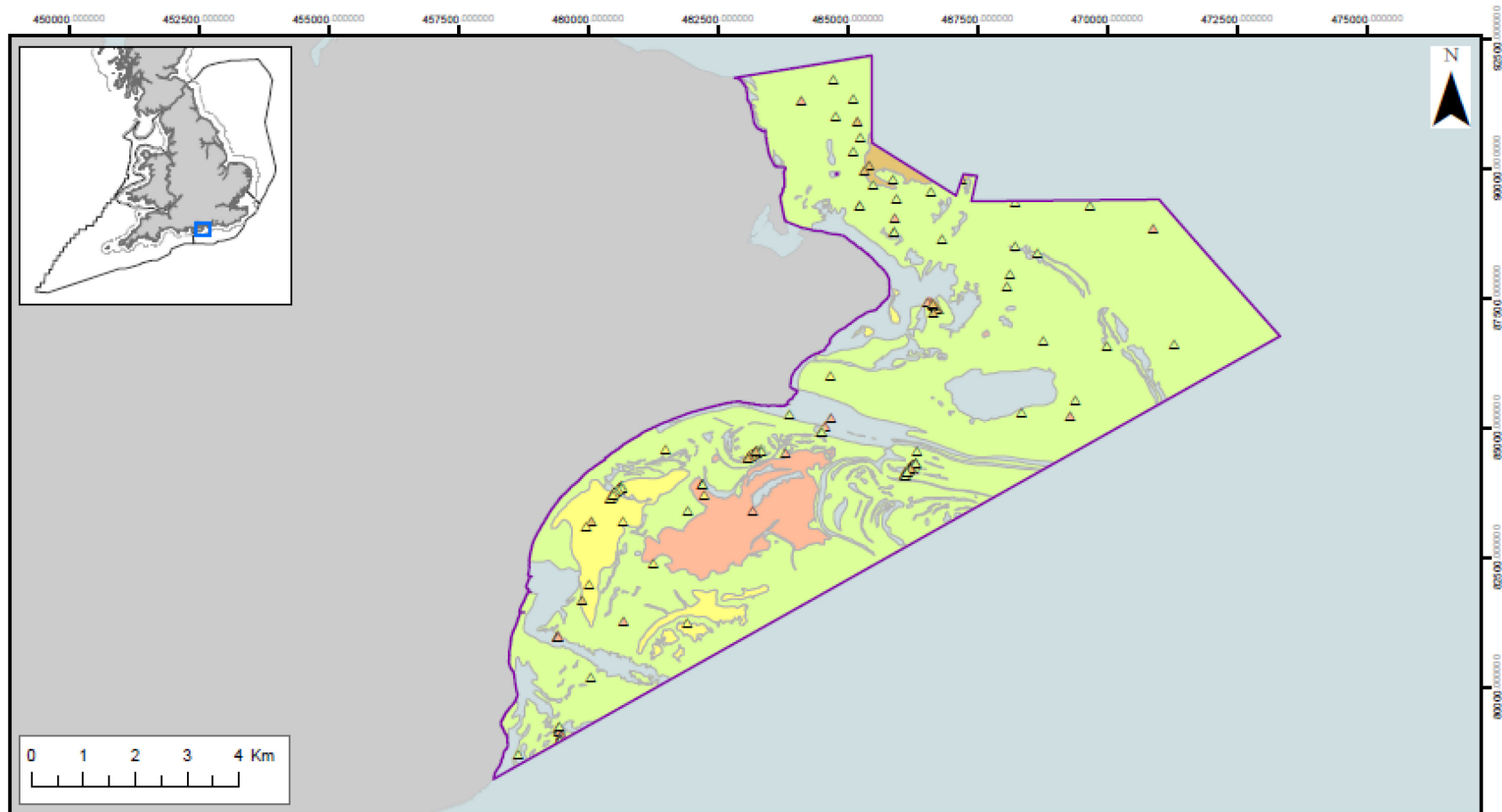
The following maps show where the features protected by this Marine Conservation Zone (MCZ) are located.

There are two separate maps, to make it easier to see the locations of features. One map shows the broad-scale habitats, and the second shows features of conservation importance. Broad scale habitats represent habitats, and associated species that live on and in the habitat. Features of conservation importance are specific habitats and species that are known to be rare, threatened or declining in our seas.

A range of different types of surveys have been used to create these maps. The symbols on the map show where a sample has been taken, or where a feature has been recorded in a specific location. For many features, there is also shading to show the extent of the area in which the feature is found. For the broad scale habitat maps, this is created from survey data and using mathematical models. On the FOCI maps, the extent is only shown where a survey has confirmed that the feature exists in this whole area. More detailed information on the techniques used and the features themselves can be found here:

<http://publications.naturalengland.org.uk/publication/5703660445368320>




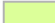


Mapped data on features correct at the time of publishing, for the most up to date feature data please consult the MAGIC website (<https://magic.defra.gov.uk/>).



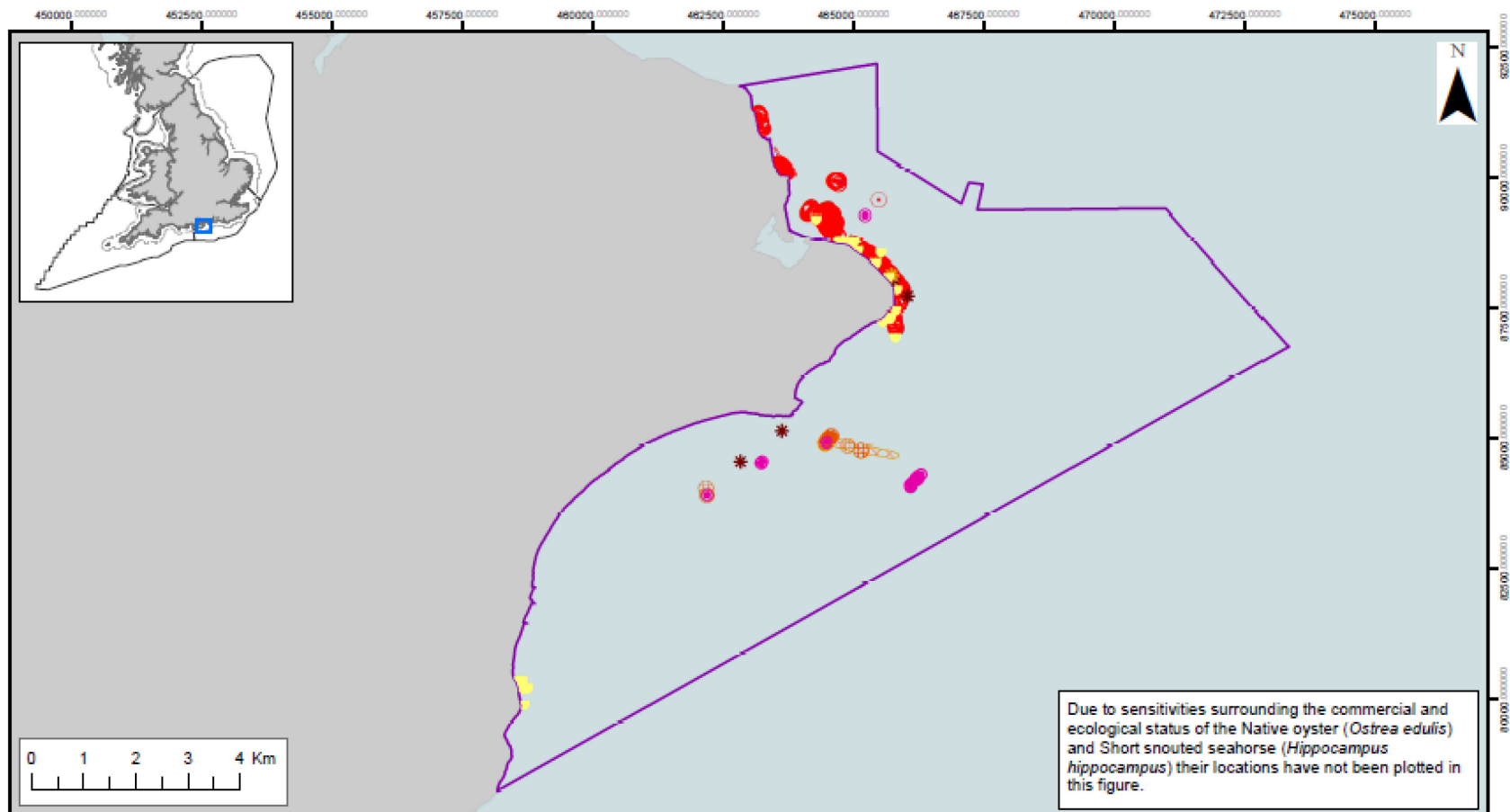
**Bembridge MCZ
Broad Scale Habitats**

-  Marine Conservation Zone
-  Regional MCZ Project Area
-  12nM Territorial Seas Limit
-  Sea
-  Land

Features designated in 2019

-  Subtidal coarse sediment (A5.1)
-  Subtidal sand (A5.2)
-  Subtidal mud (A5.3)
-  Subtidal mixed sediments (A5.4)
-  Groundtruthing sampling points, such as diver survey, grab sampling, drop down video, walk over survey or core sampling
-  Shaded areas represent habitats mapped according to data originating from surveys and mathematical models

Contains information from the Ordnance Survey © Crown Copyright and database right 2019. Ordnance Survey 100022021. UKHO Data © British Crown Copyright. All rights reserved. Permission Number Defra 012019.001. This product has been derived in part from material obtained from the UK Hydrographic Office with the permission of the Controller of Her Majesty's Stationery Office and UK Hydrographic Office (www.ukho.gov.uk). Map produced by Natural England 2019. Reference: Theme ID: 1477572 Map Projection: British National Grid



Bembridge MCZ Features of Conservation Importance

- Marine Conservation Zone
- Regional MCZ Project Area
- 12nM Territorial Seas Limit
- Sea
- Land

Features designated in 2019

- * Stalked jellyfish (*Haliclystus* sp.)
- * Stalked jellyfish (*Calvdosia campanulata*)
- * Peacock's tail (*Padina pavonica*)
- Maerl beds
- Seagrass beds
- Sheltered muddy gravels
- Maerl beds
- Seagrass beds
- Sheltered muddy gravels

Contains information from the Ordnance Survey
 © Crown Copyright and database right 2019.
 Ordnance Survey 100022021. UKHO Data
 © British Crown Copyright. All rights reserved.
 Permission Number Defra 012019.001. This
 product has been derived in part from material
 obtained from the UK Hydrographic Office with
 the permission of the Controller of Her Majesty's
 Stationery Office and UK Hydrographic Office
 (www.ukho.gov.uk). Map produced by
 Natural England 2019.
 Reference: Theme ID:1477572
 Map Projection: British National Grid