

# Intelligence Support for the Overseas Territories

Bradley Soule – Chief Fisheries Analyst

16 January 2019



## Non-Profit Organisation

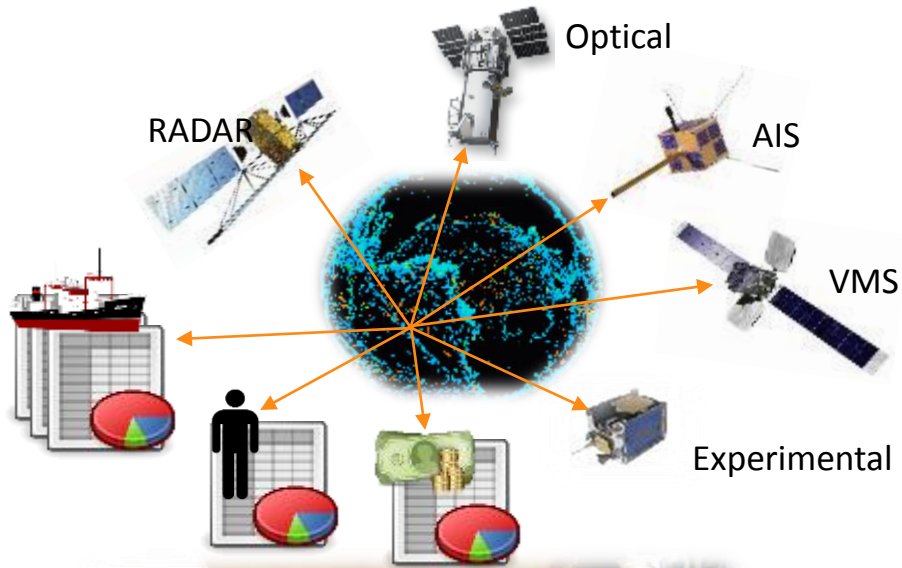


- Supports fisheries Monitoring, Control and Surveillance (MCS)
- Targets Illegal, Unreported and Unregulated (IUU) fishing
- Risk management for the seafood supply chain
- Unbiased, independent monitoring, verification and validation

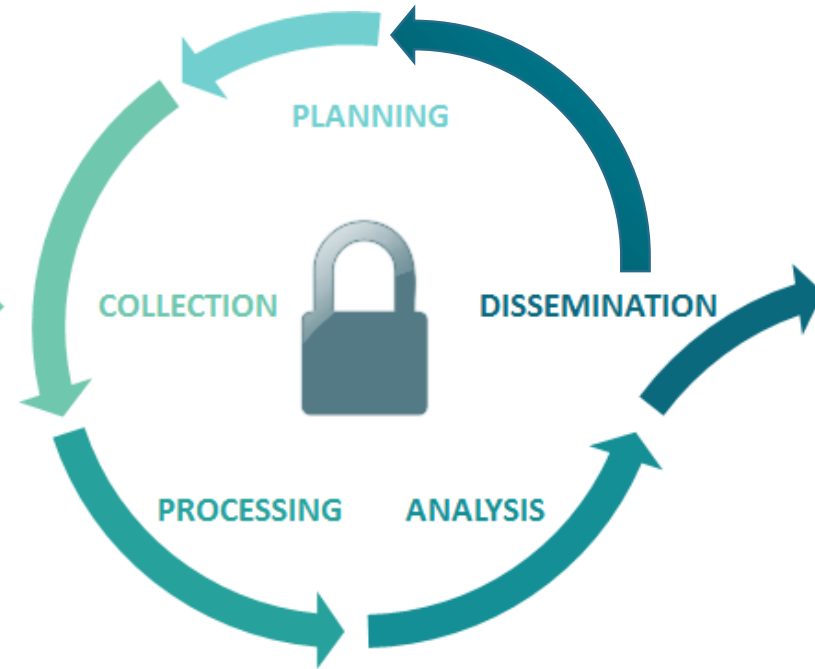
## Data

## People

## Technology



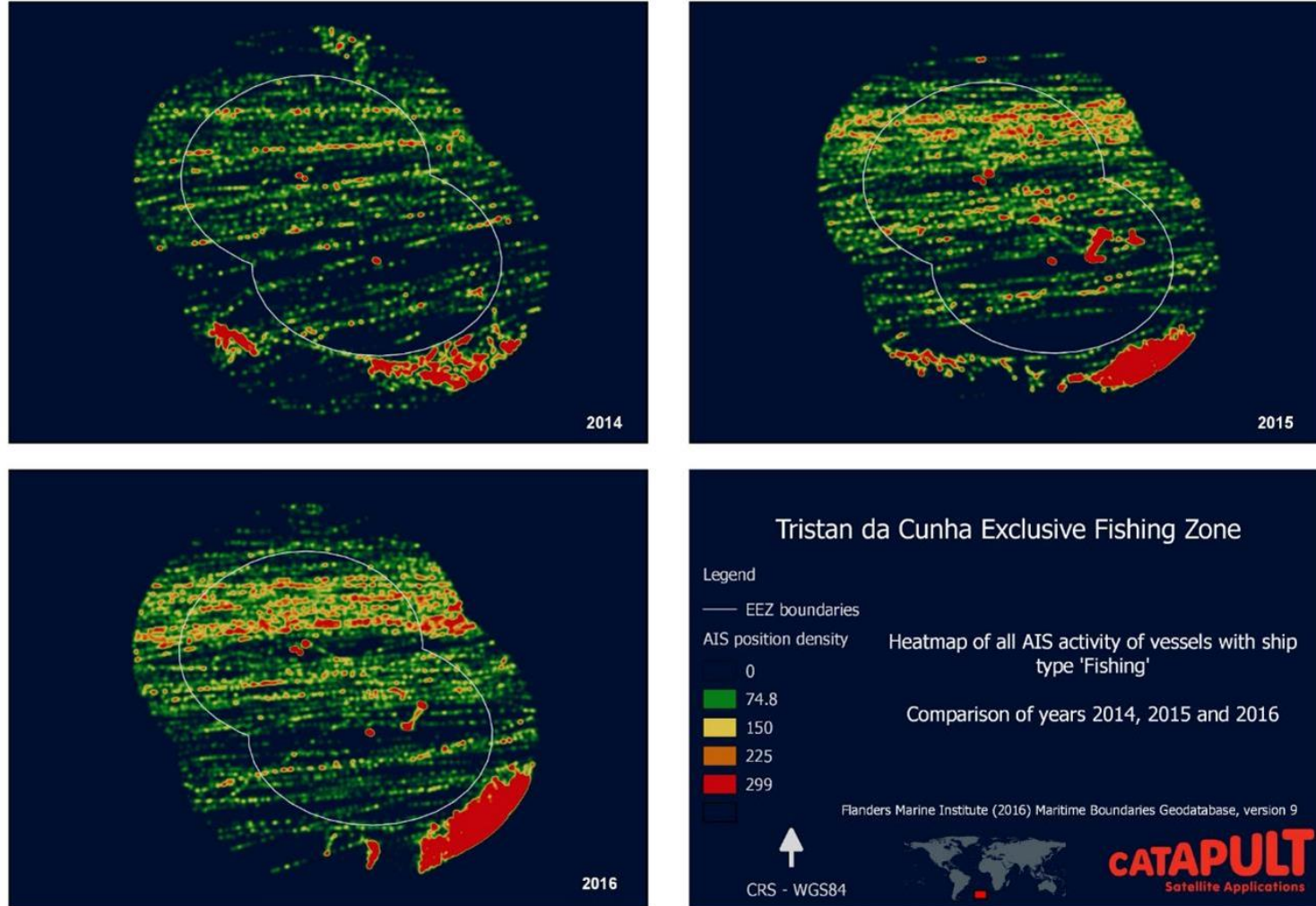
AIS, VMS, DATA



BESPOKE  
REPORTING



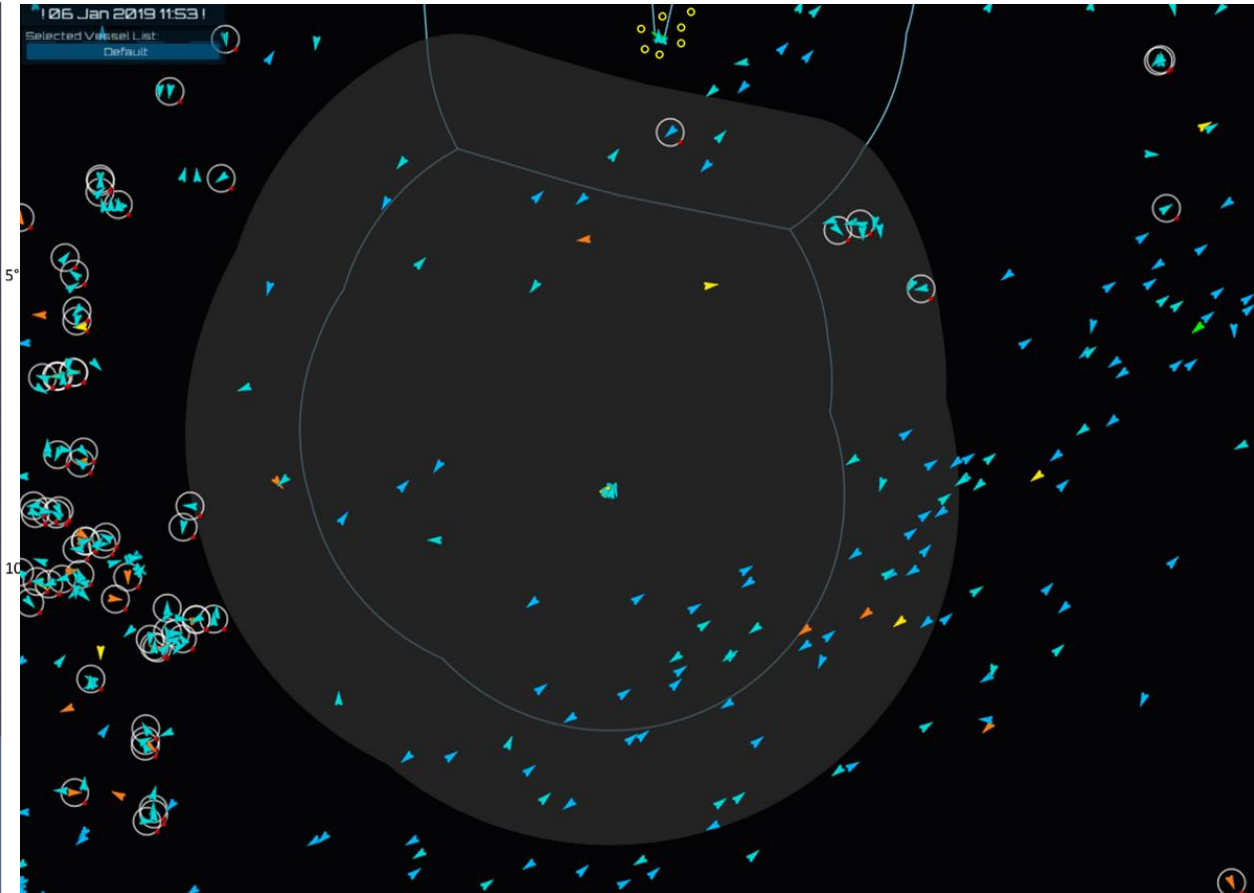
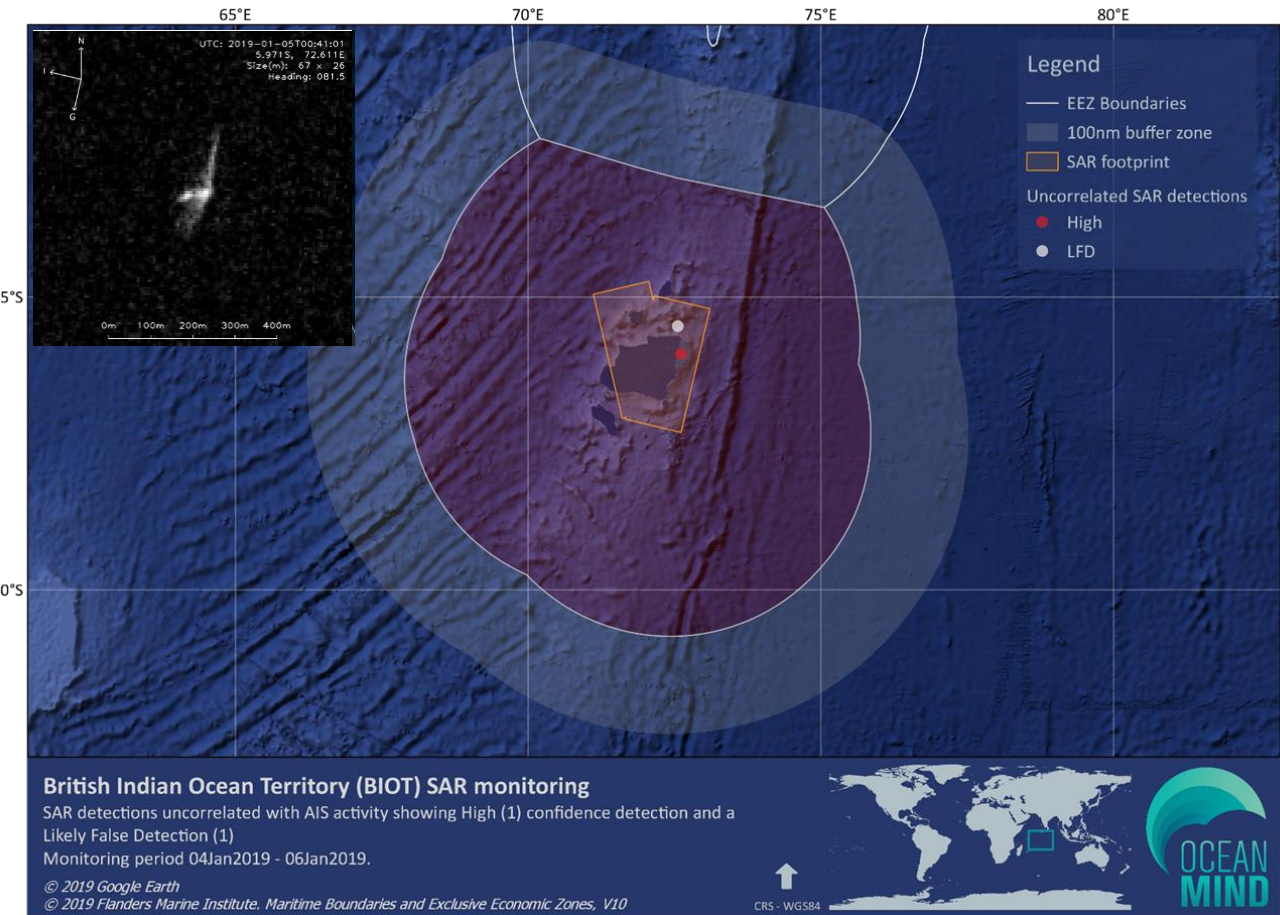
# Historic Risk Analysis



## Patrol Support

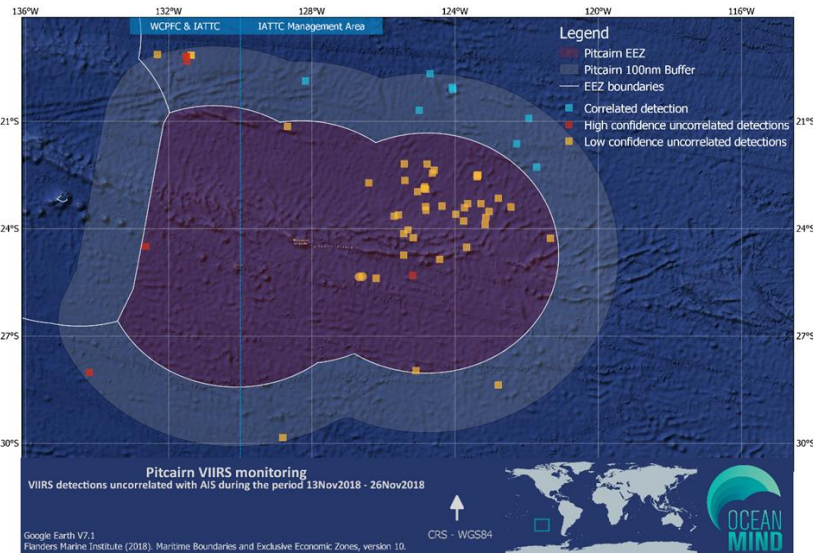
### Uncorrelated SAR detection

### Vessels of Interest (VOIs)

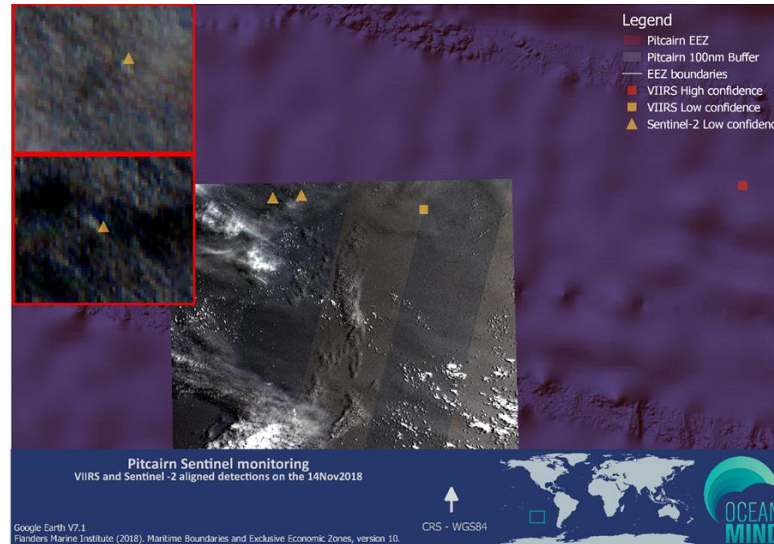


## Intelligence Gathering

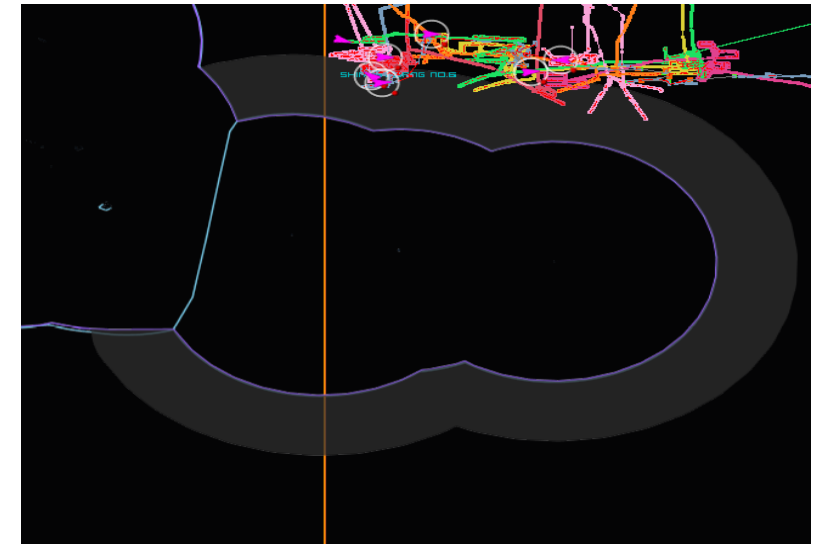
### VIIRS detections



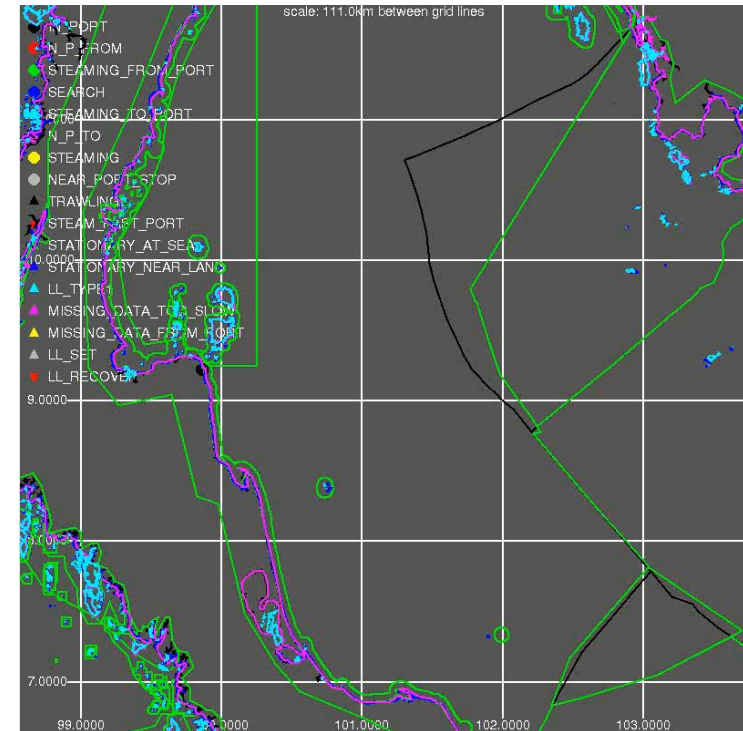
### Sentinel-2 detections



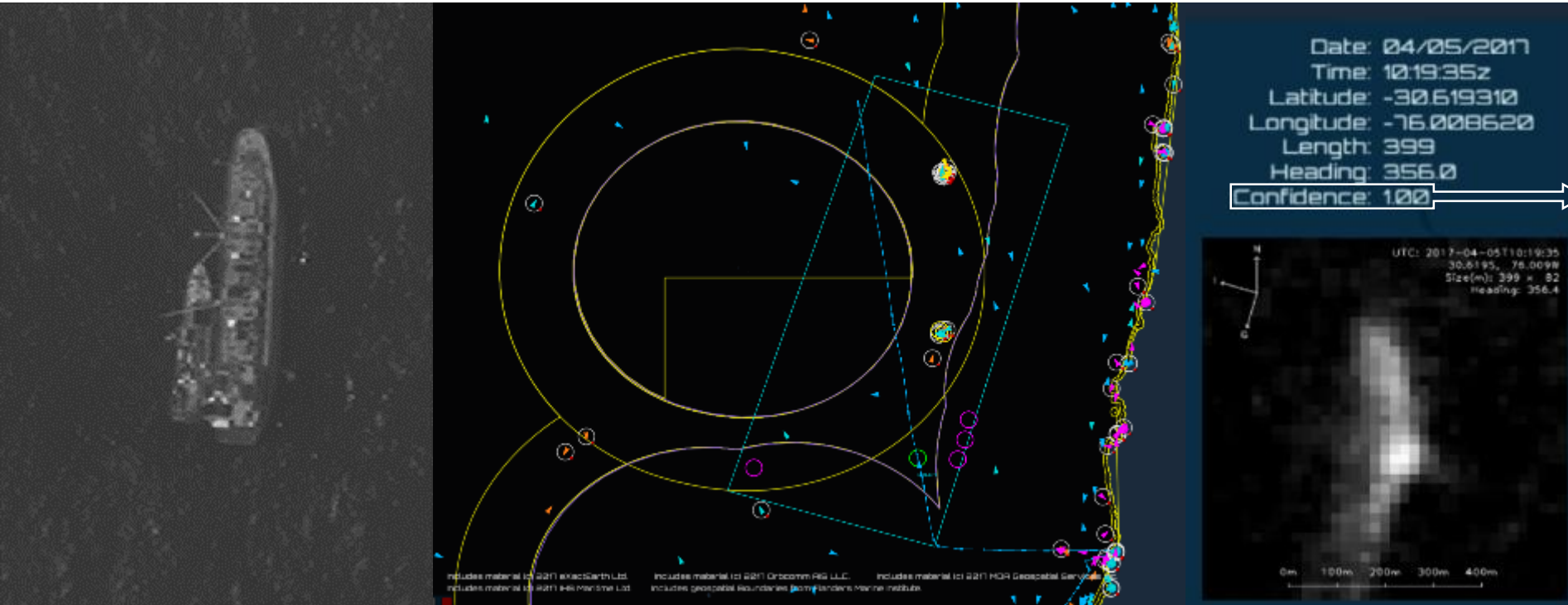
### Vessel risks



- Automated track analysis developed for different types of:
  - Longline
  - Trawl
  - Purse Seine
  - Transshipment
  - Port identification (including steaming to and from)
  - Stationary at sea
- ML used in context of rules



- High resolution optical imagery
- Synthetic Aperture Radar (SAR)



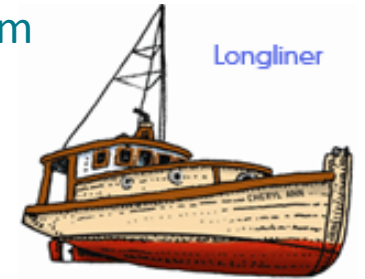
## Detection's Confidence

High



Large Purse Seiner

Medium



Longliner

Low

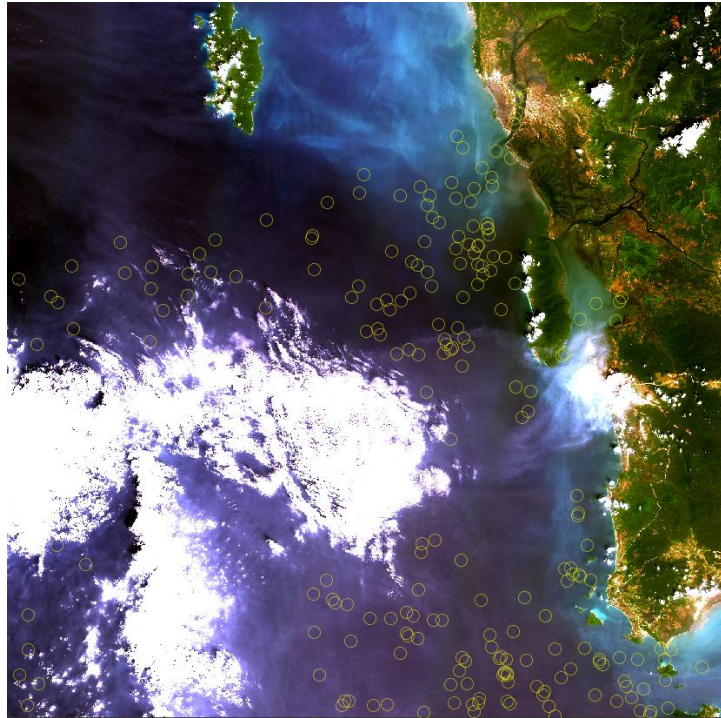


## Correlation



- Electro-Optical (EO)

## EO detections

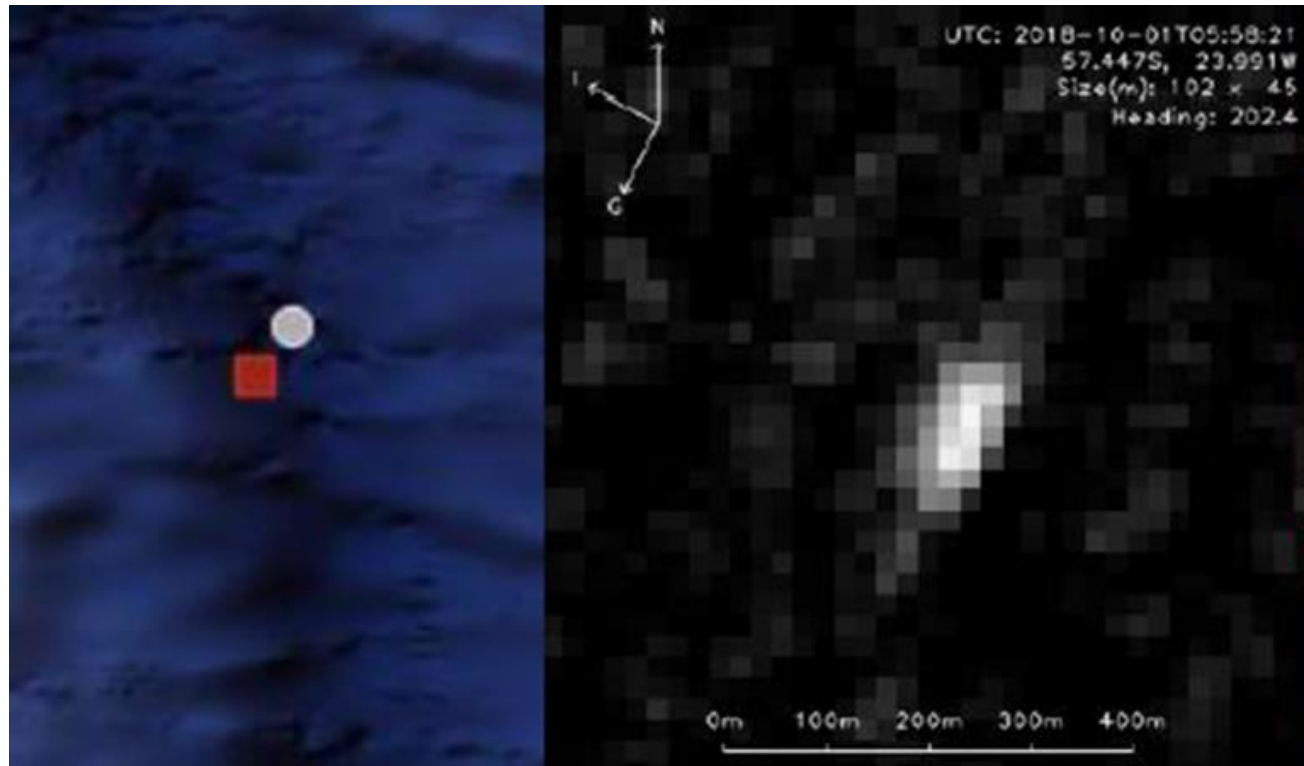


## Fishing Activity with EO



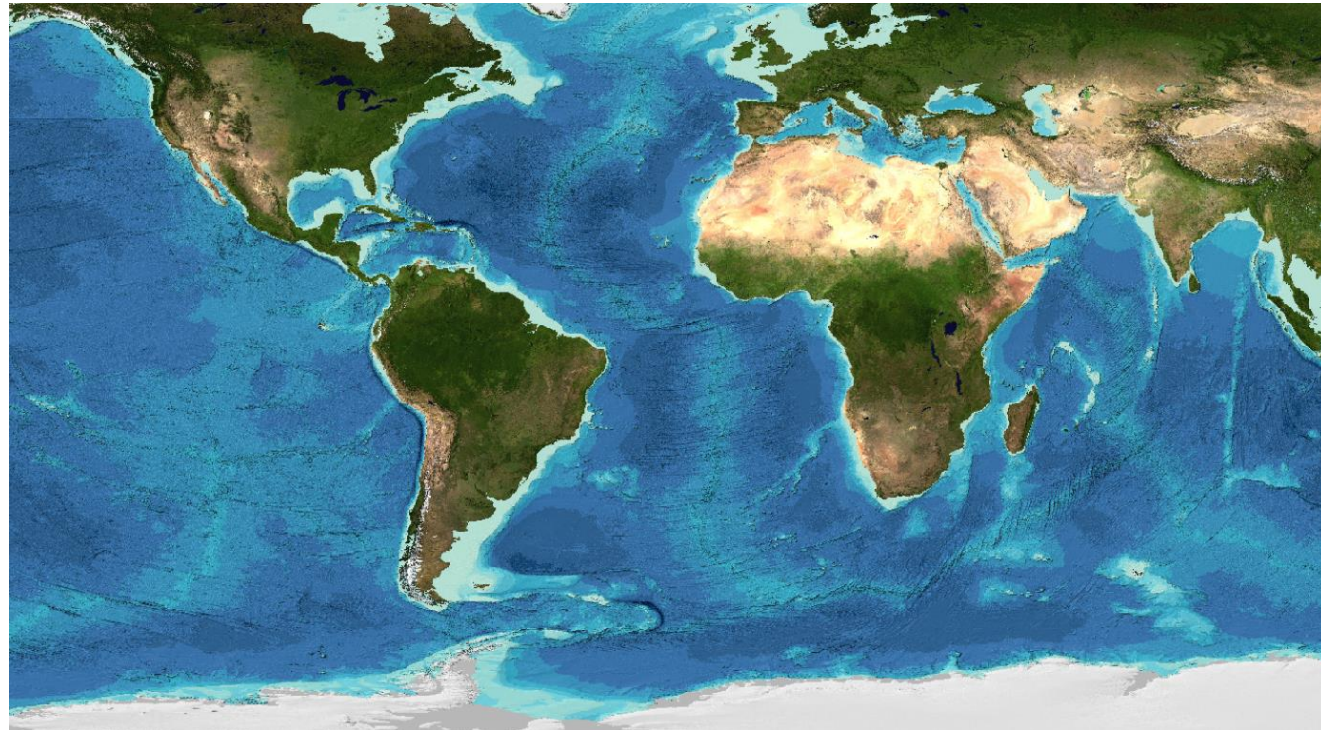
- Visible Infrared Imaging Radiometer Suite (**VIIRS**)

## VIIRS detections with SAR detection

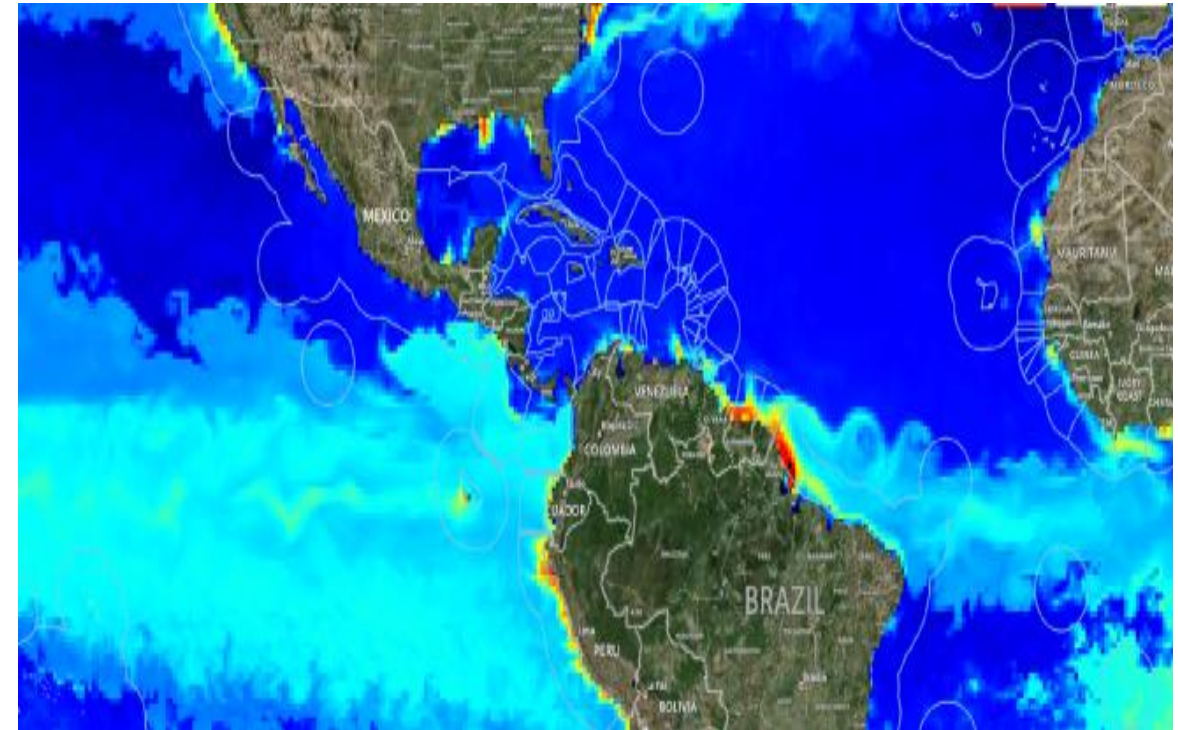


# Oceanographic Drivers

Bathymetry



Chlorophyll



---

THANK YOU FOR YOUR TIME

[bso@oceanmind.global](mailto:bso@oceanmind.global)

[Analysts@oceanmind.global](mailto:Analysts@oceanmind.global)