

Intelligence, Evidence and Risk

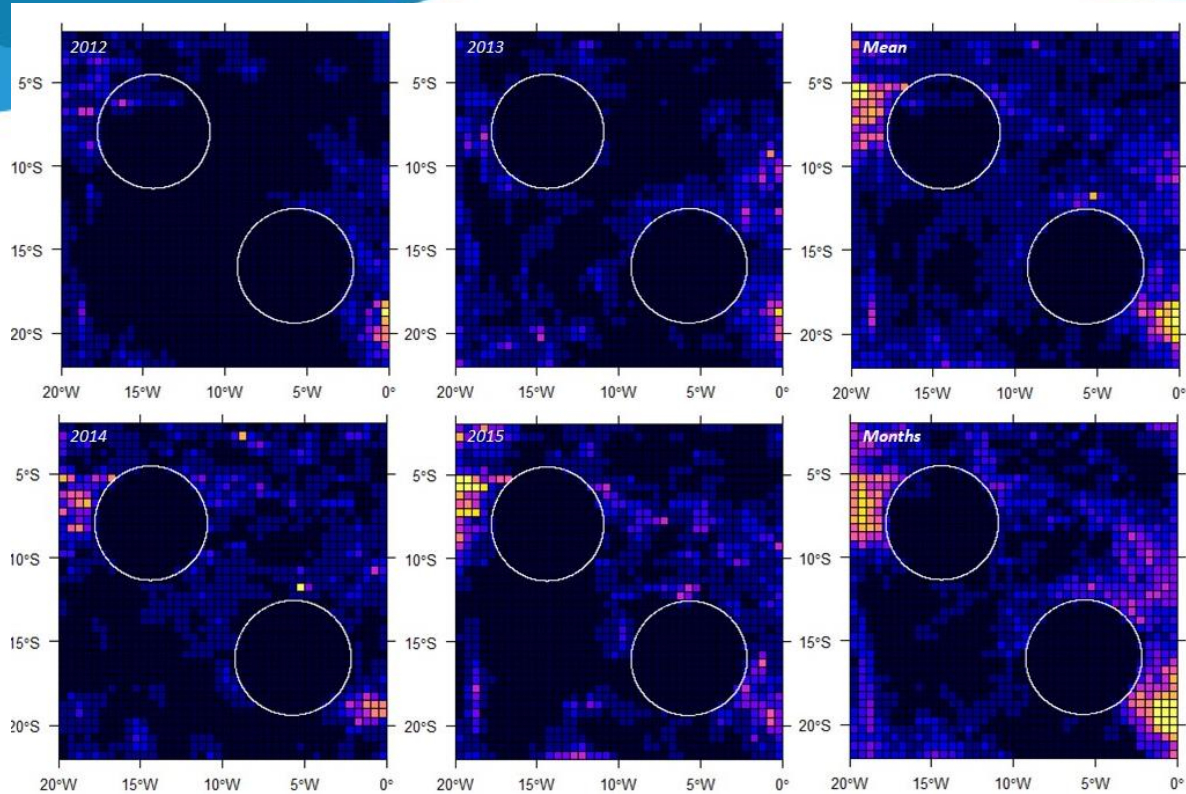


Image Credit - CEFAS

Andrew Deary

Blue Belt Head of Compliance & Enforcement

Introduction

- Jargon buster!
- Intelligence & Risk Management
- Infringements
- Application - OceanMind



Image Credit- MMO

Jargon Buster

- Key Terminology
 - Flag State = country where the vessel is from
 - IUU = Illegal, Unregulated and Unreported fishing
 - VMS = Vessel Monitoring System
 - AIS = Automatic Identification System
 - SAR = Synthetic Aperture Radar - satellite surveillance
 - Transshipment = movement of fish from a fishing vessel to a cargo vessel
 - FAD = Fish Aggregating Device

Intelligence & Risk

The basic principle...

Having the right people/assets, in the right place at the right time properly briefed and tasked...

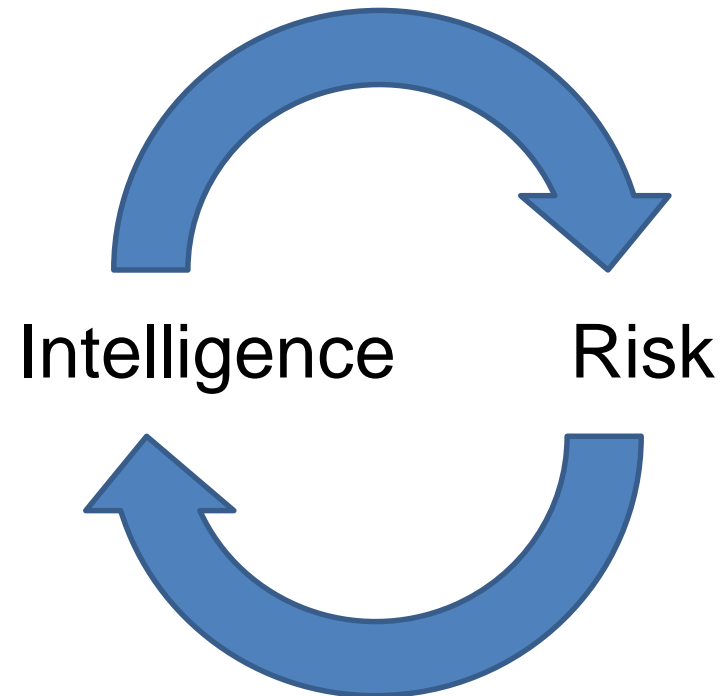


Image Credit- MRAG



For example...

Tropical Tuna Longliners

Tropical Tuna Purse Seiners



Image Credit- Seafood Source

March	April	May	June	July	Aug	Sept	Oct	Nov	Dec
High (12)	Mod (8)	Mod (8)	Low (4)	Low (4)	Low (4)	Low (4)	Low (4)	Mod (8)	Mod (8)
High (12)	Mod (8)	Mod (8)	Low (4)	Low (4)	Low (4)	Low (4)	Low (4)	Mod (8)	Mod (8)
Low (2)	Low (2)	Low (2)	Low (2)	Low (2)	Low (2)	Low (2)	Low (2)	Low (2)	Low (2)



Image Credit- MRAG

High	Mod	Mod	Low	Low	Low	Low	Low	Mod	Mod
------	-----	-----	-----	-----	-----	-----	-----	-----	-----

Vessel Threat Profiles

- What could be implemented to;
- act as deterrent,
 - gather intelligence,
 - gather evidence?

1. Threat Profile

- Current technical knowledge
- Detectability
- IUU activity
- Legislation relevant to threat

For example...

- Are they likely to have AIS on?
- Environmental parameters?
- Can they be picked up by SAR (hull structure)?

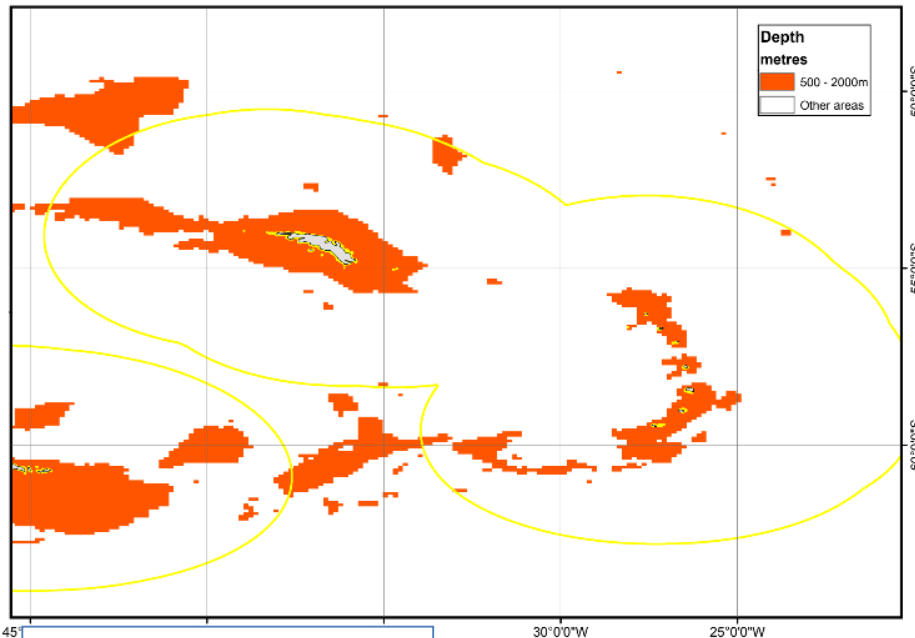


Image Credit- CEFAS

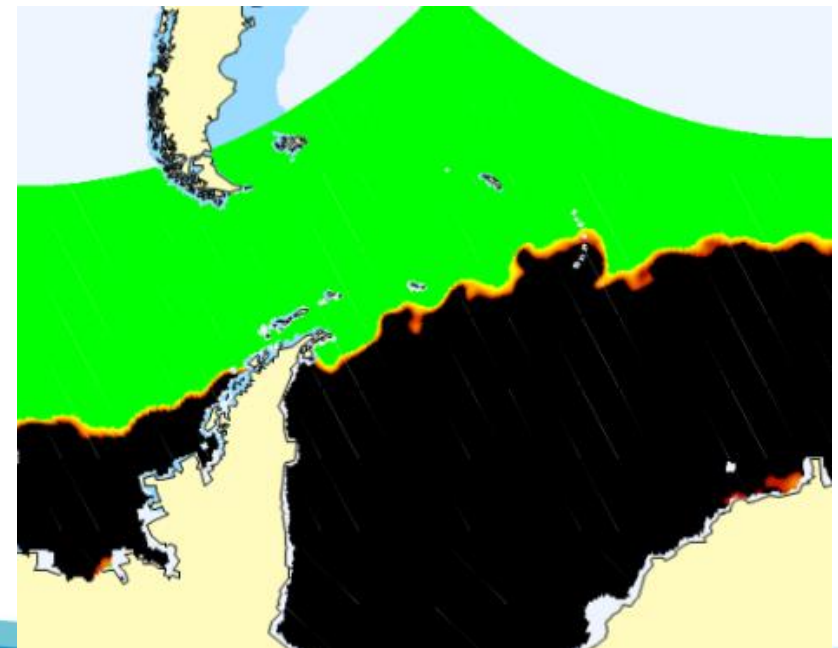
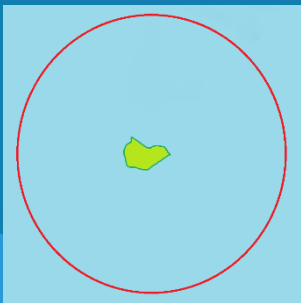


Image Credit- EMSA Integrated Maritime System



Intelligence Management



Marine
Management
Organisation
Intel Team



- Assess
- Analyse
- Develop/ add value
- Sanitise
- Disseminate



Source evaluation	1 - Reliable		2 - Untested		3 - Not reliable	
Intelligence assessment	A - Known directly to the source.	B - Known indirectly to the source but corroborated.	C - Known indirectly to the source.	D - Not known.	E - Suspected to be false.	
Handling code	P - Lawful sharing permitted.			C - Lawful sharing permitted with conditions.		

Infringements

- Enforcement Outcomes
 1. In-house (OT/ UK)
 2. Flag State
 3. Regional Fisheries Management Organisations (RFMO's)
 - Evidential Threshold
 - Case building
 - Logistics & Proportionality
 - Corroborative evidence
 - Industry liaison
 - Flag State pressure
 - IUU listing

