

Department for Environment, Food and Rural Affairs

East of Haig Fras MCZ

Feature Map

May 2019

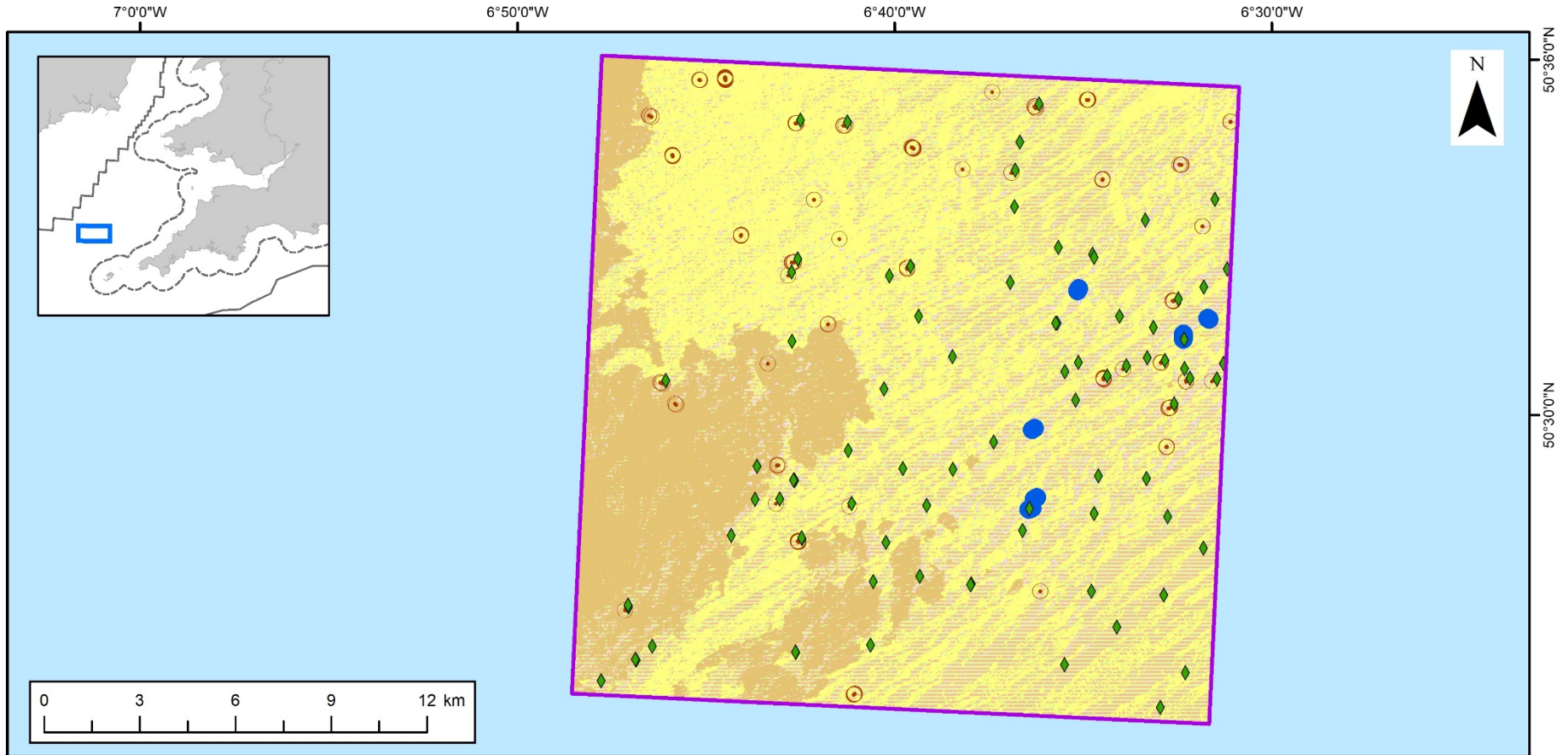
The following map shows where the features protected by this Marine Conservation Zone (MCZ) are located.

There is one map showing the broad-scale habitats and any features of conservation importance. Broad scale habitats represent habitats, and associated species that live on and in the habitat. Features of conservation importance are specific habitats and species that are known to be rare, threatened or declining in our seas.

A range of different types of surveys have been used to create these maps. The symbols on the map show where a sample has been taken, or where a feature has been recorded in a specific location. For many features, there is also shading to show the extent of the area in which the feature is found. For broad scale habitats, this is created from survey data and using mathematical models. For FOCI the extent is only shown where a survey has confirmed that the feature exists in this whole area. More detailed information on the techniques used and the features themselves can be found here:

<http://jncc.defra.gov.uk/page-7119>

Mapped data on features correct at the time of publishing, for the most up to date feature data please consult the JNCC website (<http://jncc.defra.gov.uk/page-4524>).



**East of Haig Fras MCZ
Feature Map**

- MCZ boundary
- Territorial Sea Limit
- Exclusive Economic Zone
- Land
- Sea

Features designated in 2013

- Moderate energy circalittoral rock
- Subtidal sand
- Subtidal coarse sediment /
- Subtidal mixed sediments mosaic habitat

Features designated in 2016

- Subtidal mud

Features designated in 2019

- Fan mussel (*Atrina fragilis*)
- Sea-pen and burrowing megafauna communities
- High energy circalittoral rock
- Shaded areas represent habitats mapped according to data originating from surveys and mathematical models
- Groundtruthing sampling video tow

© JNCC 2019. Contains public sector information licensed under the Open Government Licence v2.0, including United Kingdom Hydrographic Office and Ordnance Survey data © Crown copyright (2015). 2015 JNCC Monitoring Survey © JNCC/Cefas. MB0120 Survey data © Defra. Map Projection: WGS84UTM30N, Inset: BNG.