

HS2

Phase 2a Planning Forum

Wednesday 15th January 2020

HS2

The High Speed (West Midlands to Crewe) Bill

Dominic Moore, Town Planning Lead, Phase Two, HS2 Ltd

House of Lords

- Progress on the Bill, and the Select Committee's hearing of petitions, was paused due to the dissolution of Parliament for the General Election
- Petitioner hearings are expected to take place as soon as possible after a decision of Parliament that the Bill should resume (ie the necessary revival motions are passed) and the appointment of the Select Committee*
- We expect the first week of Select Committee hearings to be opening, teach-ins, and a route tour
- We expect that there will then be approximately two weeks of substantive petition hearings
- Seven petitions have already been withdrawn, leaving 28 to be heard by the Select Committee
- Royal Assent is expected in early 2020*

* *Exact timings are subject to the Parliamentary timetable*



HS2

Community Engagement - update

Terry Stafford, Senior Community Engagement Manager, Phase 2a, HS2 Ltd

2a Community Engagement snapshot – January 2020

Strategic activity

Public progress - Oct 19

Pre-election period and Oakervee review

Works-related engagement

Ground investigations – six site visits

Local events – in Whitmore and Madeley

Workshop for land agents

Wider community

Local charities and community groups – e.g CEF & BLEF

Growing Spaces project at ten schools along the route

Information points at 13 locations

Trent-Sow Group

Enquiry management

Looking ahead

Engagement up to Royal Assent is likely to include:

- Small-scale public drop-ins at selected sites on the line of route
- Targeted surgeries and drop-ins
- Briefings for parish councils
- Newsletter and updated information materials, including Commonplace

HS2

Phase 2a Programme - update

Dominic Moore, Town Planning Lead, Phase Two, HS2 Ltd

Programme Update

- Development of initial design work for Early Environmental work (on-going)
- S.17 pre-app planned for March (see item 6) submissions following Royal Assent
- Early stages of engaging a designer for our intervention at Newcastle Road
- GI Planned to start this spring
- Re-commencing environmental surveys in spring
- Early pre-planning for route wide “minor” highway works (2021 start - probably)



HS2

Planning Context Reports

Peter Attwell, Town Planning Manager, Phase Two, HS2 Ltd

Legislative and Policy Context

- Phase 2a Bill:

Paragraph 16 of Schedule 17 requires HS2 to submit a document to councils setting out its proposed programme in advance of requests for approval under Schedule 17

- Phase 2a Planning Memorandum:

Paragraph 9.2 of the memorandum requires HS2 to produce a report that includes 'an indication of the location of scheduled and non-scheduled works to which request for approval are expected to relate'



Content

- The Context Reports will comprise of a:
 - General overview of project and planning regime
 - Description of works within the planning authority
 - Proposed programme for submitting Schedule 17 requests
- In addition to satisfying requirements placed on HS2 by the Bill and Planning Memorandum, the Context Report also contains useful information regarding the HS2 planning regime, other consenting requirements (e.g. Highways Sch 4 and 32), and Environmental Minimum Requirements



Further information

- Planning Context Reports:
 - Do not require sign-off from the local authority
 - Are not updated once issued (although for every quarter a forward plan of Schedule 17 requests will be issued to local authorities covering a 6 month period)



Phase 2a Fly-through (July 2017 - Hybrid Submission)



<https://www.youtube.com/watch?edufilter=NULL&feature=youtu.be&v=wWWEWZYWs58>

HS2

Early Environmental Works EWW / Balfour Beatty update

Nigel Phelps, Consents Coordinator, Balfour Beatty

Background

Purpose - to establish critical environmental mitigation and translocation sites that will allow the Main Works Civils Contracts to start promptly

Around 20% of the total new green infrastructure for Phase 2A will be created at this stage

Ensure compliance with the Project's Environmental Minimum Requirements (EMRs)

Balfour Beatty appointed by HS2 under the SCAPE framework to construct the works

Arup appointed by Balfour Beatty as their Design Partner

Key Elements

Design and Construction of Mitigation Works

Surveys

Archaeology – LsWSIs

**Format / Packaging of Schedule 17 Consent
Submissions**

**Community Engagement & Authority
Consultation**

Landowner Consultation & Acquisition



Consents

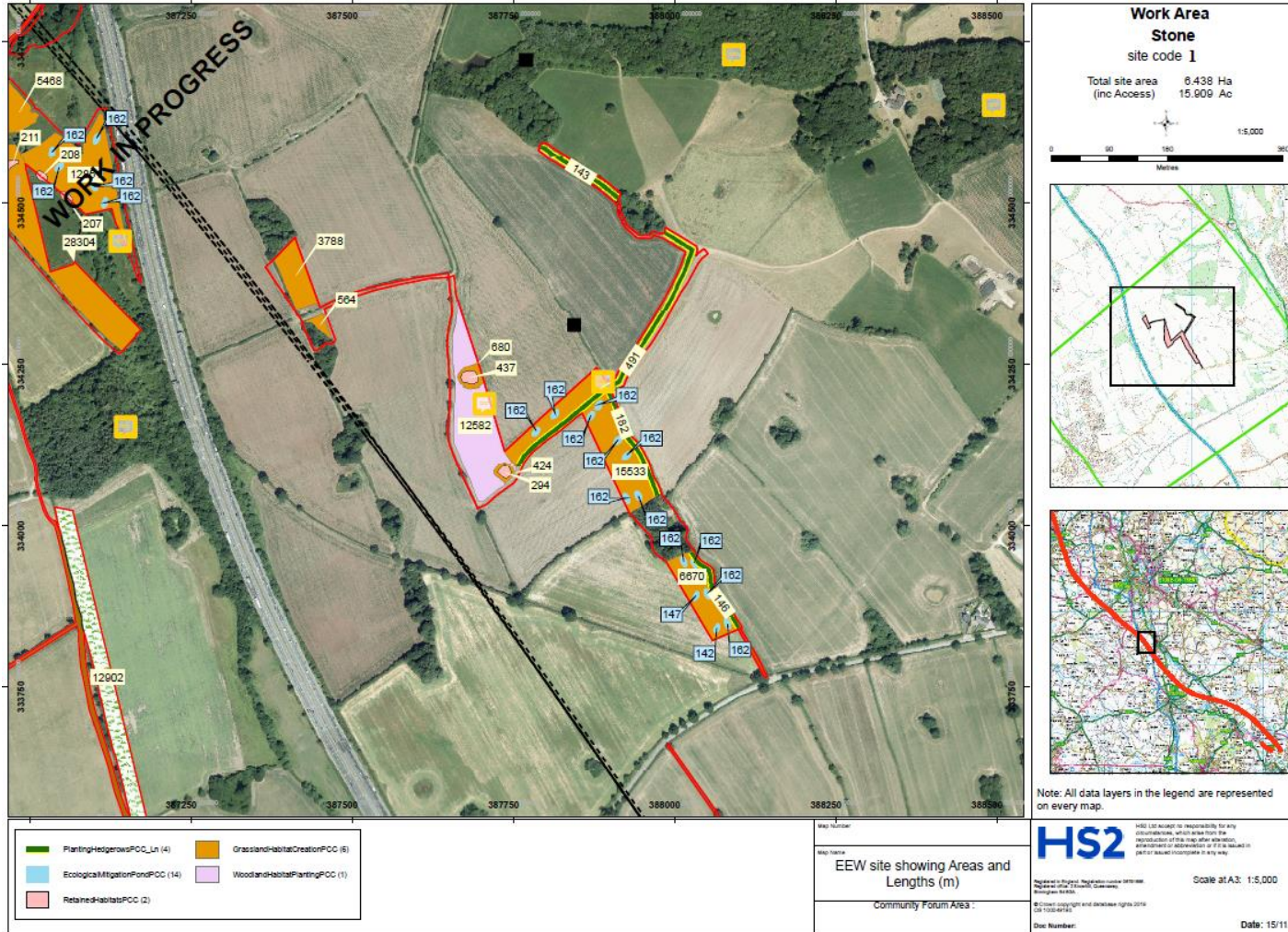
➤ **Schedule 17 Town Planning** – ponds & wetlands (Plans & Specs will be required for earthworks)

Lichfield	• Six applications: Five in Tranche 1; One in tranche 2.
Stafford	• Twelve applications: Six in Tranche 1; Six in Tranche 2.
Newcastle Under Lyme	• Four applications: Two in Tranche 1; Two in Tranche 2.
East Staffs	• Two applications: one in each Tranche
Cheshire East	• Three applications: One in Tranche 1; Two in Tranche 2.

Consents (continued)

- **Schedule 4 Highways:** New construction site accesses from a public highway. *7 locations currently seven locations identified.*
- **Schedule 32 Part 5 Protective Provisions (Watercourses)** – works adjacent to existing watercourses. *14 locations currently identified including 4 affecting main rivers.*

Consents (continued)



Sch. 17 Consent Submissions Programme

End of Jan / Early Feb 2020 – LPA Kick Off Pre-App Meetings

(Early 2020 – Phase 2A Hybrid Bill Royal Assent)

March 2020 – Second LPA Pre-App Meetings

May 2020 – Third and final LPA Pre-app Meetings

June 2020 – Final review and signoff

July 2020 – Formal submission to LPAs (both tranches)

September 2020 – Receive Consent

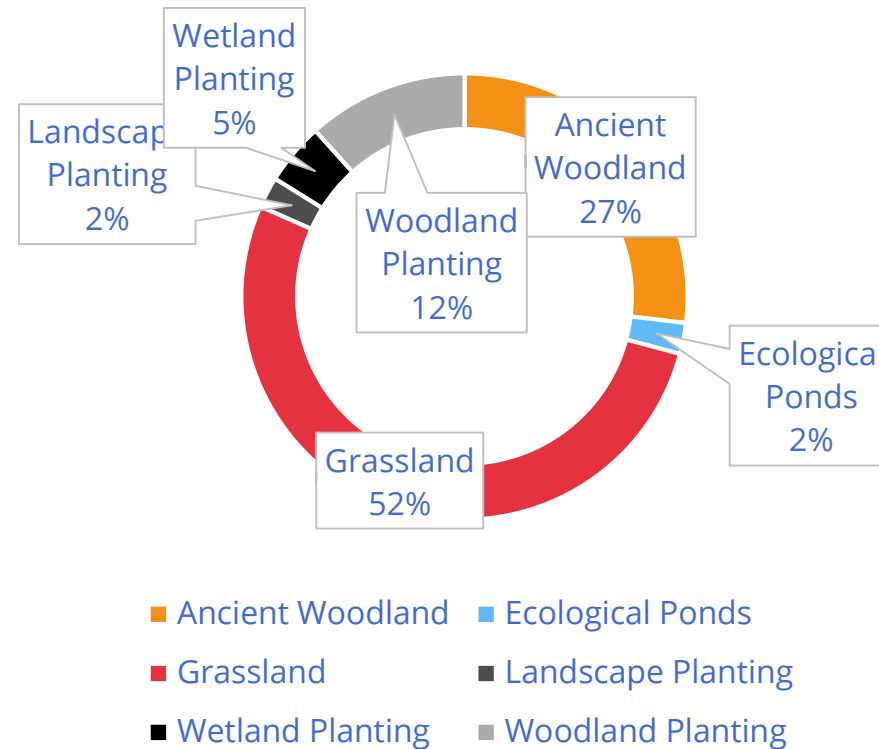
October 2020 – Earliest Start of Site (ponds & wetlands first)



Headlines

550 hectares of replacement habitat:

- 147 kilometres of hedgerow planting
- Other protected species mitigation
- Translocation and clearance of protected species for EEW sites
- Archaeological mitigation, in line with the Historic Environment Research and Delivery Strategy



Approach

- To provide like-for-like replacement of habitats
 - Primarily woodland, grassland, wetland (including ponds) and hedgerows
 - Targeting high value condition (e.g. species-rich wildflower grassland)
 - Create larger habitat areas than those being lost.
- Habitats designed and varied to reflect site specific conditions e.g. topography, soils, hydrology, aspect and landscape character along the route.

Design Criteria



Ponds

Range of sizes, shapes and structures



Wetlands

Comprise wetland grasslands, ponds, fen and reedbeds



Terrestrial

New / replacement hedgerow, grassland



Specific Elements

Within each mitigation area, extra features may be provided depending on specific species needs and/or opportunities, which could include:

- Bat roosts (or houses)
- Bird nesting sites
- Reptile basking banks
- Amphibian hibernacula



Section translocation



Bat House (Phase 1)



Schwegler 1FF

Future Management

- Following completion of the work, the sites will either:
 - Return to previous owners, where they have the interest and capability to manage them, or
 - Be assigned to a third party to manage (a suitable contractor appointed by HS2, or a Wildlife Trust or similar, as appropriate).

- Management would be secured through covenant agreements and payments, as necessary, to ensure that the targeted habitat condition is maintained in the long-term.

HS2

Qualifying Authority Status - update

Becky Shortt, Policy Advisor, HS2 Phase 2a Environment Team, DfT

HS2

Guidance on the Removal of Qualifying Authority Status

Paul Gilfedder, Head of Town Planning, HS2 Ltd

Guidance on the Removal of QA Status

- As well as specifying qualifying authorities, Sch 17 also allows the SoS to remove this status
- Not anticipated that this situation should arise given the collaborative nature of the Planning Forum and the responsibilities we each have through the Planning Memorandum
- To ensure there is clarity between all parties, it is considered appropriate for the SoS to provide guidance



Guidance on the Removal of QA Status

- Draft guidance prepared – to be shared with Planning Forum for comments
- It follows the same approach put in place for Phase 1, with a number of stages to resolve any issues / concerns before removal of QA status would occur
- Para 7.6.1 from the Planning Memorandum sets out key considerations:

“If the QA repeatedly fails to expedite requests for approval, or seriously fails to expedite a request in line with the timescale set out in paragraph 23(4) of the Planning Conditions Schedule, or repeatedly or seriously fails to act in accordance with all the requirements of this Memorandum, the SoS may have sufficient grounds to order that the authority shall cease to have the powers of a qualifying authority under the Bill provisions”



Guidance on the Removal of QA Status

Stage	Action	Subject and Timescales
0	Resolve issues / concerns at working level between HS2 Ltd and QA	If unresolved, HS2 Ltd to notify DfT and QA in writing of proceeding to Stage 1.
1	Letter from HS2 Ltd to QA - Heads of Town Planning	Details issues / concerns and efforts made to resolve. Offers discussion / meeting to resolve. Response in 14 days. DfT notified if Stage 2 commenced.
2	Letter from HS2 Ltd to QA – Chief Executives	Asks for response on issues / concerns and how they will be addressed. If no acceptable resolution then it is escalated to DfT. Response in 21 days.
3	Letter from Senior Civil Servant to Chief Executive of QA	As per Stage 2. Makes clear if no acceptable resolution then DfT may need to begin process to remove status. Response in 7 days.
4	Letter from SoS to HS2 Ltd and QA – Chief Executives	Notifies parties that DfT intend to make Regulations to remove status. Offers final opportunity to resolve issues / concerns. Response in 7 days.
5	SoS makes Regulations to remove status	Comes into force 21 days after it is laid.

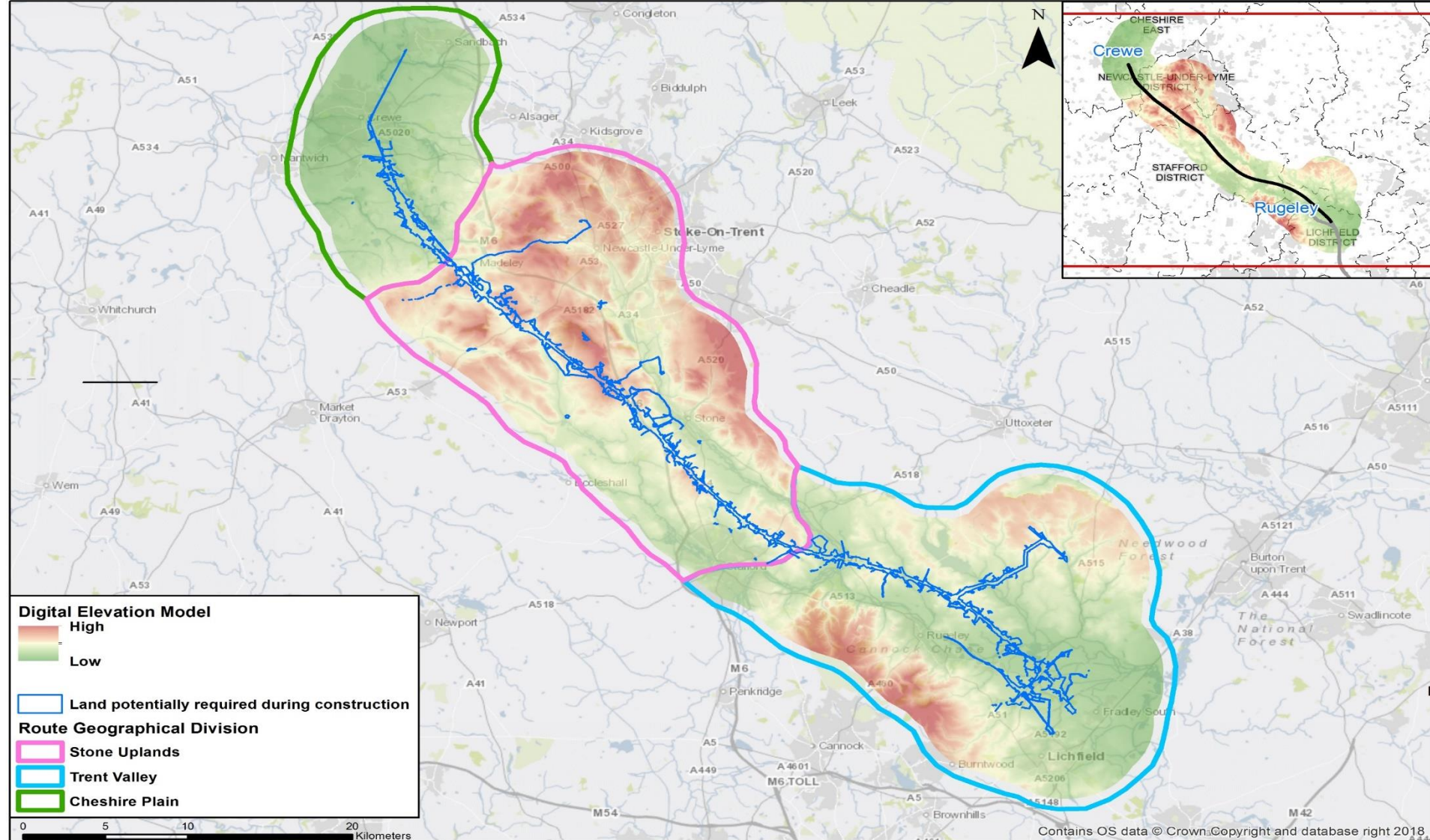


HS2

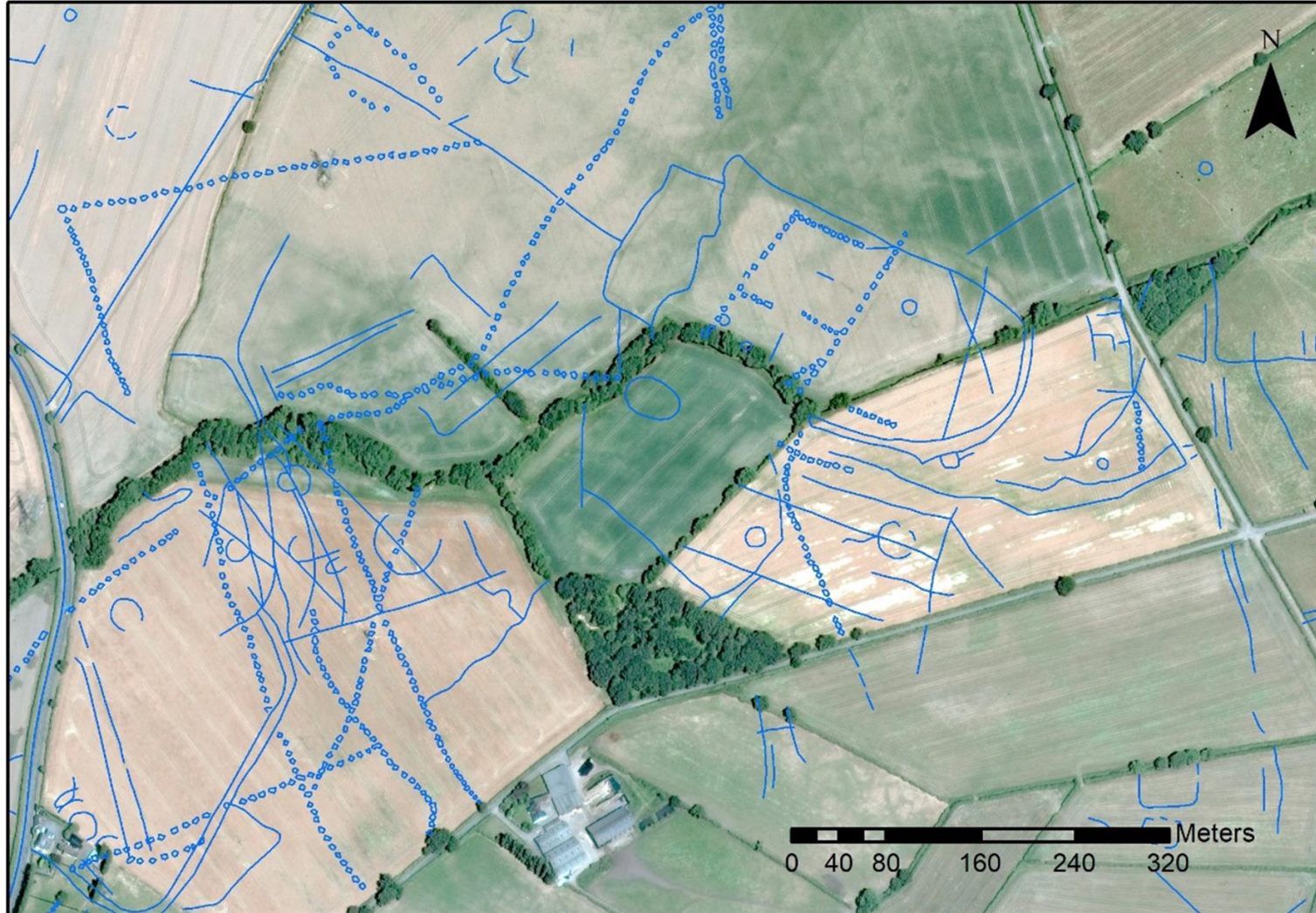
Phase 2a Heritage - update

Chris Jordan, Archaeology and Heritage Advisor, HS2 Ltd

Topographic - character areas



Aerial image: cropmarks identified at Rileyhill, Trent Valley

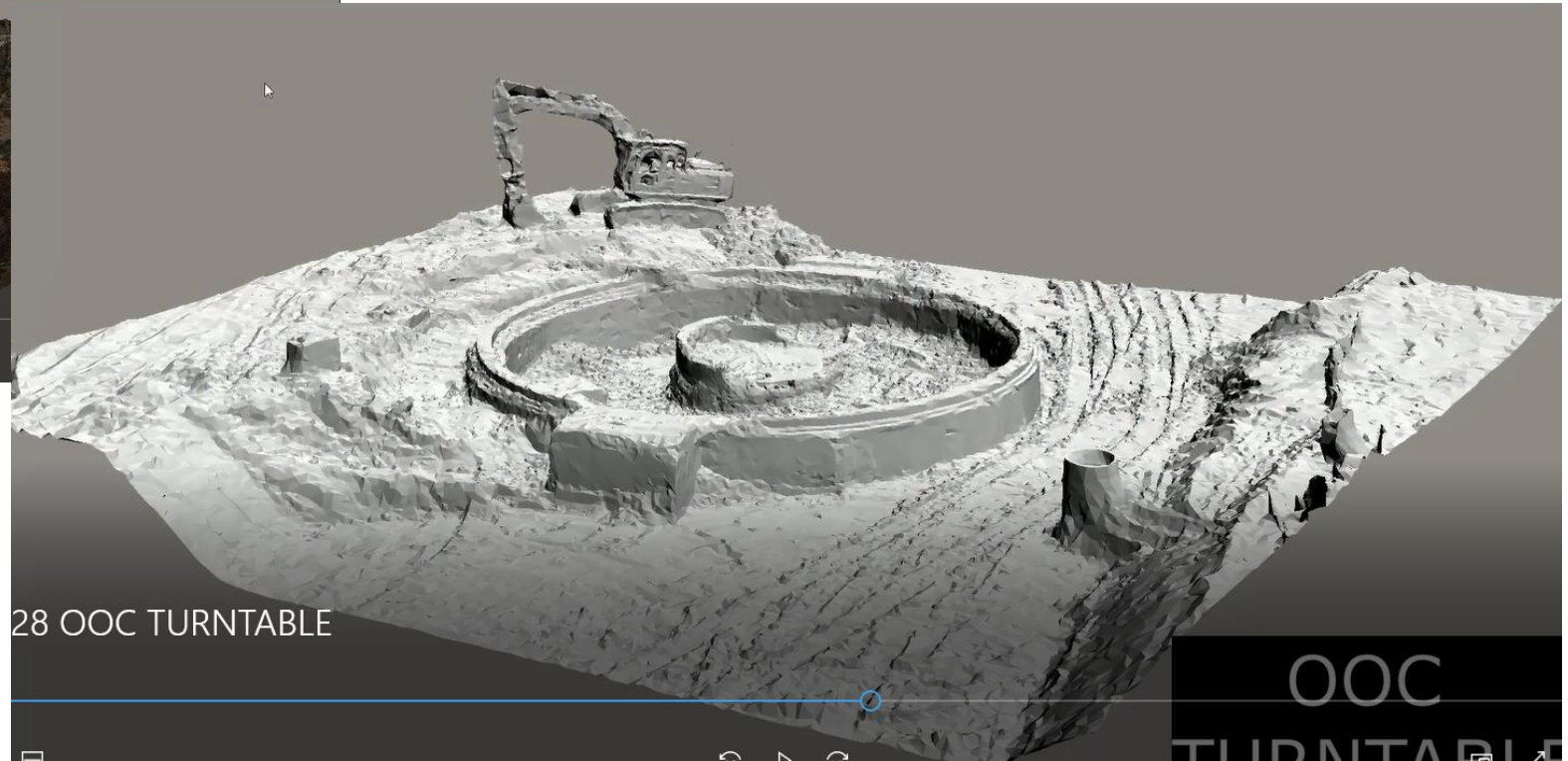
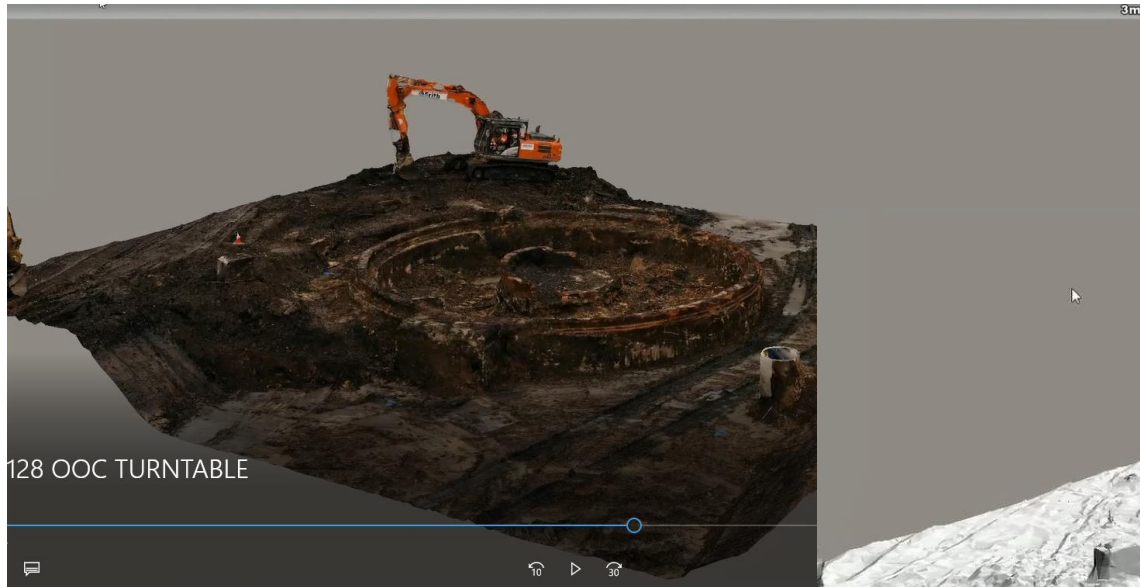




Excavation



3-D imaging and UAVs / Structure from motion technology



Managing Risk

Increasing Certainty/Reduced Risk

BUT

Increasing Cost/Increasing Impact



LiDAR/Aerial Photos



Fieldwalking



Trial trenching



Desk-based research



Geophysics



“HS2 is a once-in-a-generation opportunity to improve our understanding of how people have shaped England’s landscapes over thousands of years.”

Duncan Wilson

Chief Executive, Historic England



HS2

Phase 2a Subgroup - update

Dominic Moore, Town Planning Lead Phase 2, HS2 Ltd

Subgroup Meetings

	Highways	Environmental Heath	Flood Water & Drainage	Heritage
Key HS2 Contacts	Ann-Marie Stubbs	Caroline Richards/ Laura Setright	Jason Small	Helen Wass/ Chris Jordan
Next Meeting Date	10 th March 2020	(Date TBC)	23 rd January 2020	4 th February 2020

Note: Highways subgroup met on 7th January, once the minutes have been completed, an email with the relevant meeting documents will be circulated to all members.

HS2

Phase 2a Forward Plan & Documents Tracker

Dominic Moore, Town Planning Lead Phase 2, HS2 Ltd

Forward Plan

	Jan-20	Mar-20 (TBC)	13 th May-20	15 th Jul-20	16 th Sep-20	18 th Nov-20
1.	LPA Context Reports	2a VR session (24 th or 25 th March, Snow Hill)	Planning Forum Notes 11 to 12 – final update	Planning Forum Notes 13 & 14 - update	Planning Forum Notes 15 to 17	Phase 2a Planning Forum 2021 Lookahead
2.	Qualifying Authority Status Update		Consenting Numbers and EEW Pre-app	S.17 Review & feedback	S.17 Review & feedback	S.17 Review & feedback
3.	Heritage update		Phase 2a Subgroups	Community & Environment Fund (CEF) and Business & Local Economy and (BLEF) update	Phase 2a Subgroups	
4.	Phase 2a Subgroups		Planning Forum Notes 13 & 14			
5.						
6.						

Planning Forum Documents Status

Title	Status
Environmental Minimum Requirements	Confirmed at May 2018 meeting that the Forum have no comments. Assuming no changes other than Building Act CoCP change and anything coming from House of Lords process.
Draft Class approval	With DfT - statutory consultation will take place after the House of Lords Select Committee Special Report issued
Appeals Regulations and Guidance	With DfT to take forward with appropriate Ministers as part of Royal Assent of the Bill
Fee Regulations	
Schedule 17 Statutory Guidance	

HS2

End