

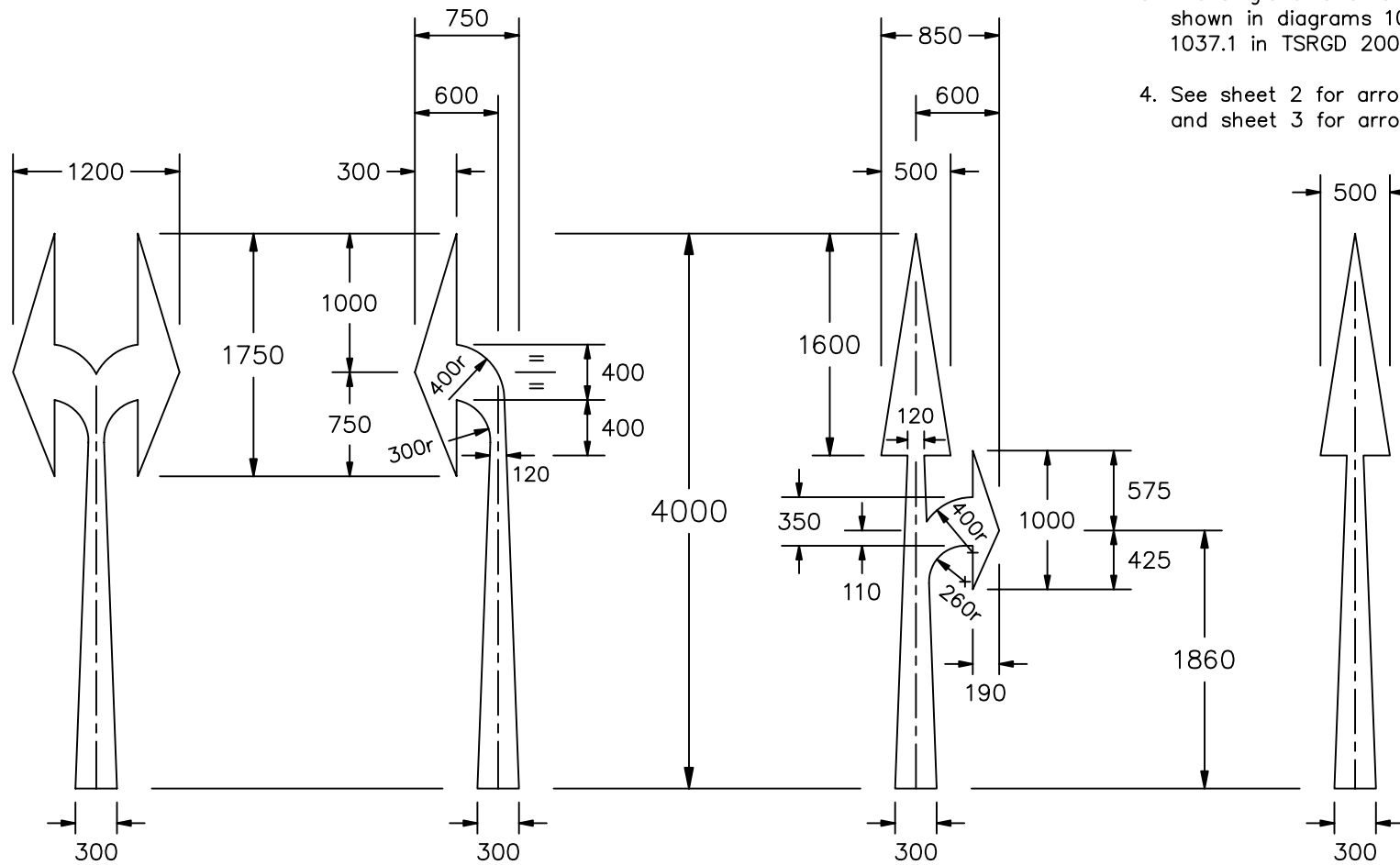
Drawing No.
P 1038
 Sheet 1 of 3

Before using this drawing, confirm
 that it has not been superseded.

© CROWN COPYRIGHT

NOTES: 1. COLOUR : Arrows ---- WHITE

2. The single arrow indicating a left turn and the double arrow indicating ahead and a right turn may be reversed in a mirror image.
3. The single arrows form part of the road markings shown in diagrams 1035, 1036.1, 1036.2 and 1037.1 in TSRGD 2002.
4. See sheet 2 for arrows that are 6 metres long and sheet 3 for arrows that are 9 metres long.



P1038-1

**Department for
 Transport**

Title: Road Markings
TRAFFIC LANE ARROWS
 4 metres long

Issue: A: 30.6.94
 B: 1.8.95
 C: 17.2.05

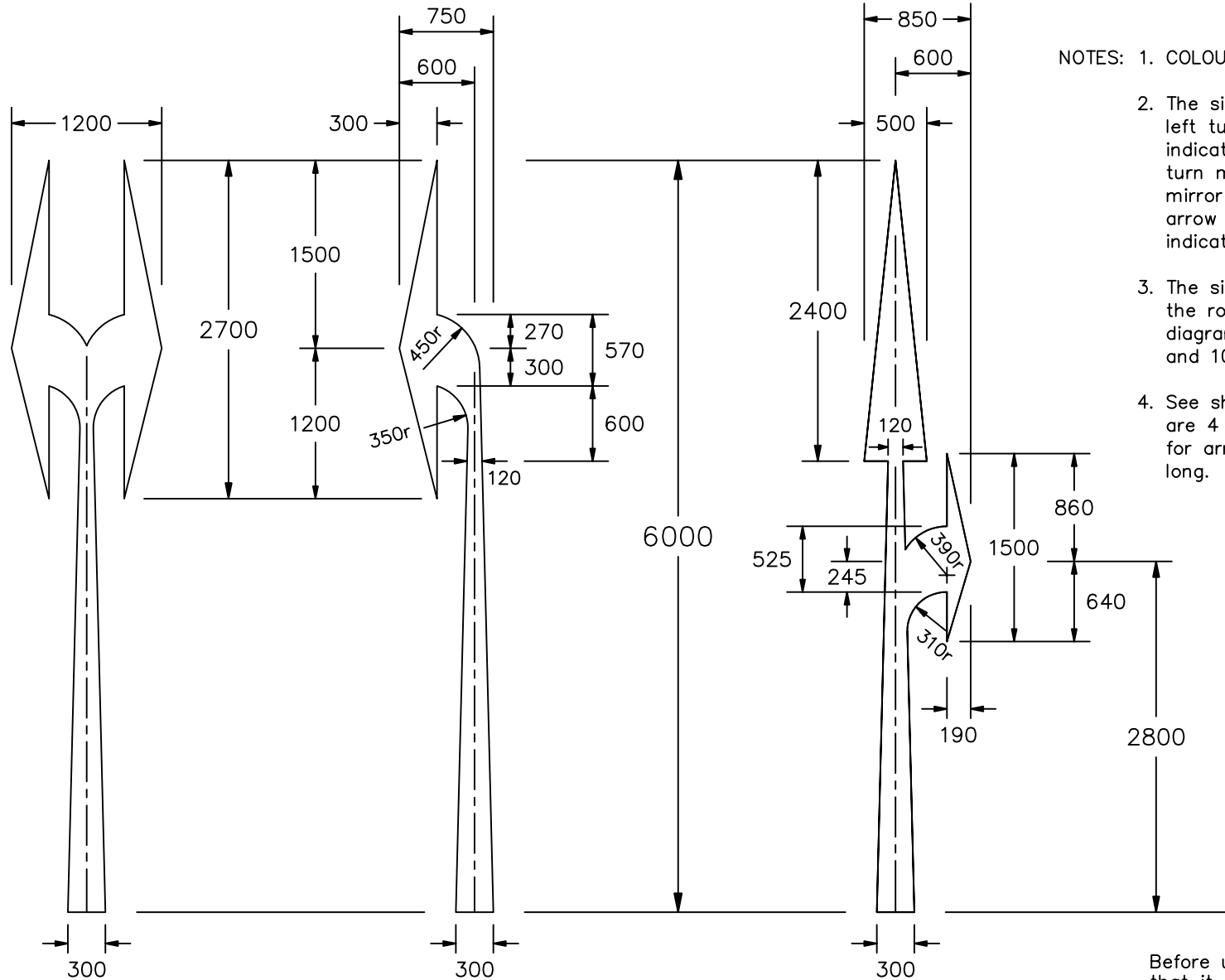
Drawn by: S.P.
 Approved by: R.M.

Dimensions: MILLIMETRES

Drawing No.
P 1038
 Sheet 1 of 3

Drawing No.
P 1038
 Sheet 2 of 3

© CROWN COPYRIGHT



- NOTES: 1. COLOUR : Arrows --- WHITE
2. The single arrow indicating a left turn and the double arrow indicating ahead and a right turn may be reversed in a mirror image. The small side arrow may be omitted to indicate ahead only.
3. The single arrows form part of the road markings shown in diagrams 1035, 1036.1, 1036.2 and 1037.1 in TSRGD 2002.
4. See sheet 1 for arrows that are 4 metres long and sheet 3 for arrows that are 9 metres long.

P1038-2

Before using this drawing, confirm that it has not been superseded.

**Department for
 Transport**

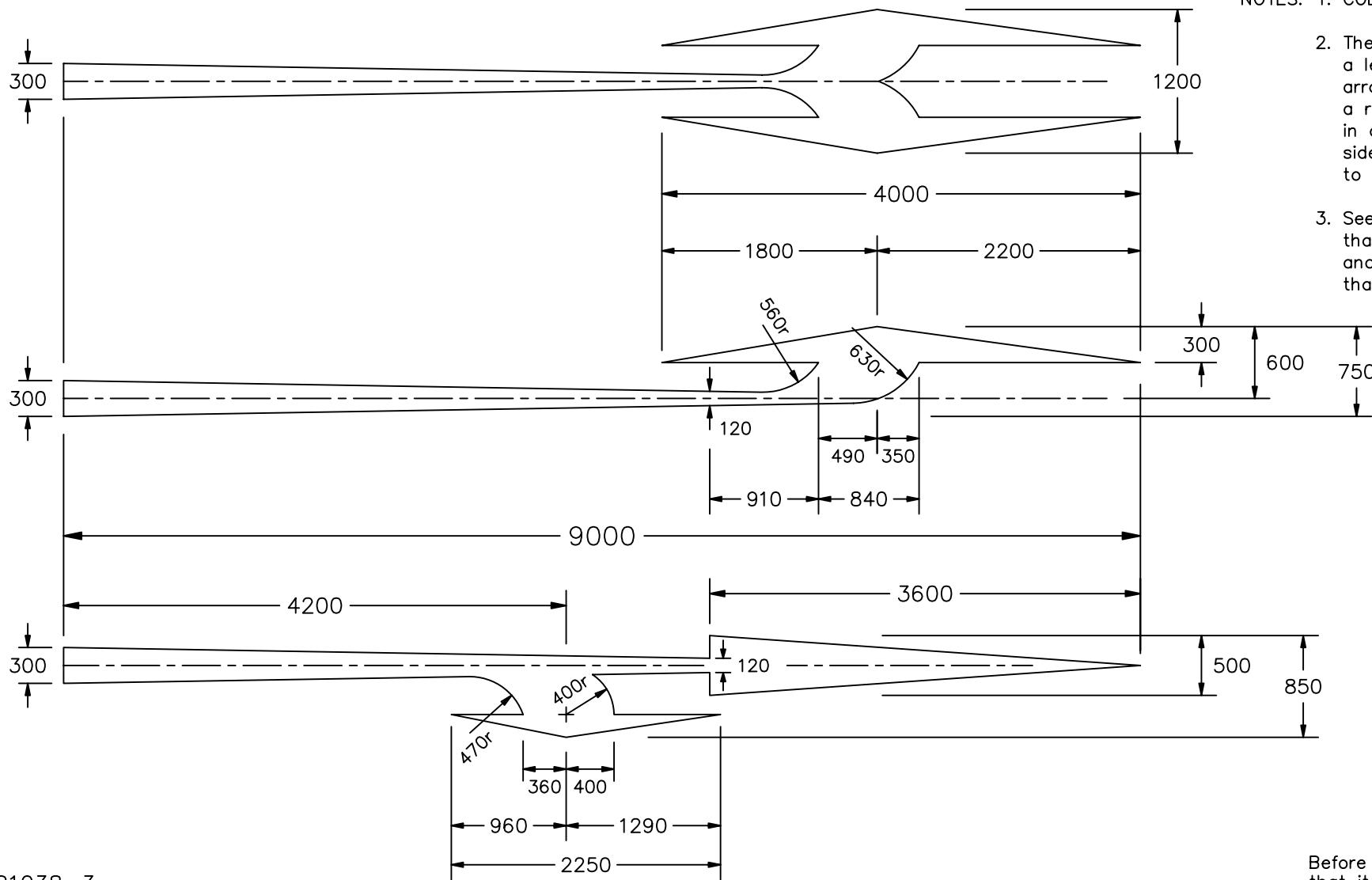
Title: Road Markings
TRAFFIC LANE ARROWS
 6 metres long

Issue: A: 30.6.94
 B: 1.8.95
 C: 17.2.05

Drawn by: S.P.
 Approved by: R.M.

Dimensions: MILLIMETRES

Drawing No.
P 1038
 Sheet 2 of 3



NOTES: 1. COLOUR : Arrows --- WHITE

2. The single arrow indicating a left turn and the double arrow indicating ahead and a right turn may be reversed in a mirror image. The small side arrow may be omitted to indicate ahead only.

3. See sheet 1 for arrows that are 4 metres long and sheet 2 for arrows that are 6 metres long.

P1038-3

Before using this drawing, confirm that it has not been superseded.

<p><i>Department for</i> Transport</p>	Title:	Road Markings	Issue:	Date:	Drawn by:	Dimensions:	Drawing No.
	TRAFFIC LANE ARROWS 9 metres long		A:	30.6.94	S.P.	MILLIMETRES	P 1038 Sheet 3 of 3
	B:	1.8.95	Approved by:	R.M.			