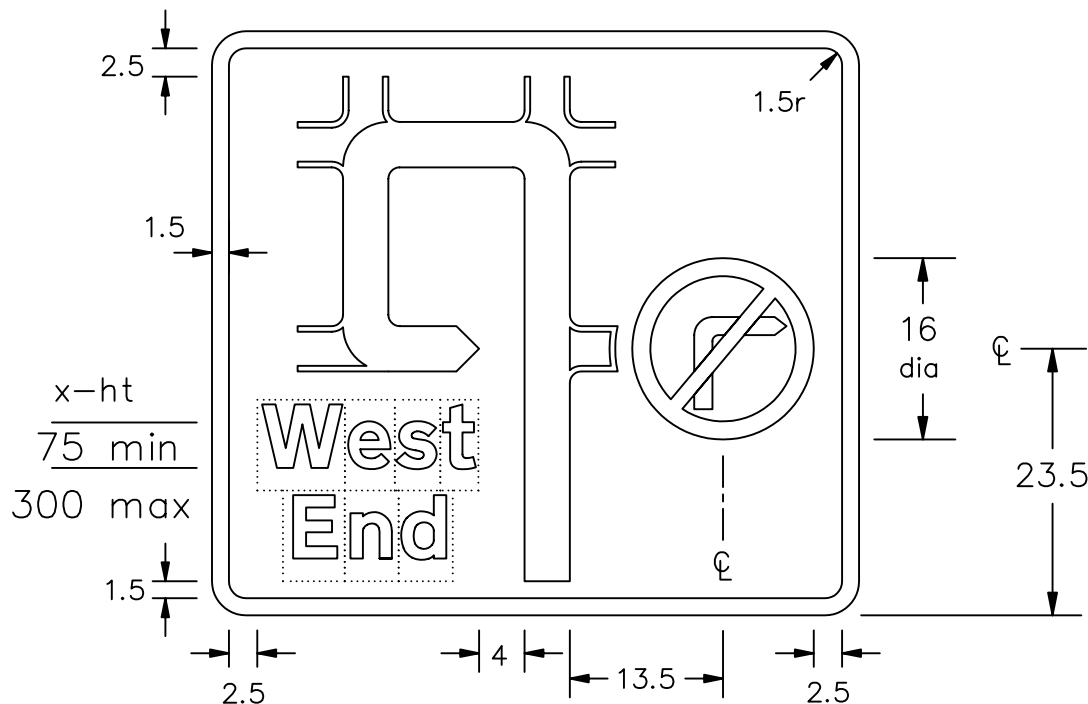


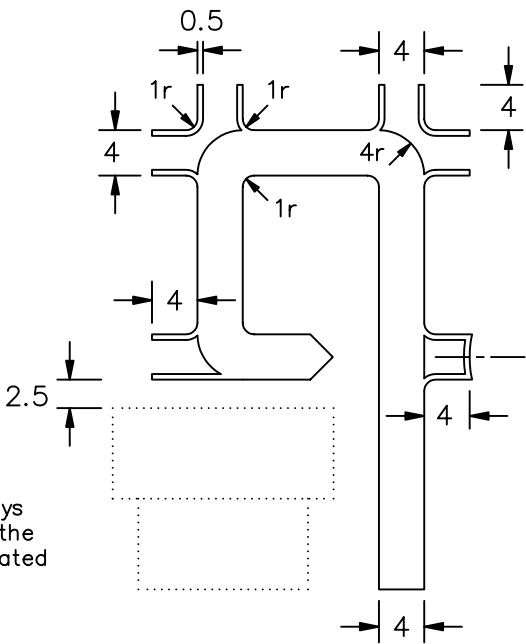
Drawing No. P 2124	Related Drawing P 612	Before using this drawing, confirm that it has not been superseded.	© CROWN COPYRIGHT
------------------------------	---------------------------------	---	-------------------



This drawing should be used in conjunction with the Traffic Signs Manual Chapter 7

- NOTES:–
1. The legend is from the Transport Heavy alphabet at the x-heights shown.
 2. The tile outlines do not form part of the sign.
 3. The roundel is proportional to the one shown on drawing P 612 and may be varied to the one shown on drawing P 613.
 4. COLOURS : Background ----- WHITE
Route symbol, Border & Legend ---- BLACK

Prohibitory roundel as shown on P 612
 5. DIMENSIONS : x-heights are in millimetres, other dimensions are in stroke widths. (4sw = x-height)



Note:–
The route symbol is always 4sw wide irrespective of the status of the route indicated

P2124	<div> <div>Department for Transport</div> <div> <div>Title: Non-Primary Route Directional Sign</div> <div>DIRECTION TO DESTINATION SHOWN AVOIDING PROHIBITED MOVEMENT</div> </div> </div>	<div> <div>Issue: A: 15.7.94</div> <div>Date: B: 3.9.04</div> <div>C: </div> </div>	<div> <div>Drawn by: S.P.</div> <div>Approved by: R.M.</div> </div>	<div> <div>Dimensions: SEE NOTE 5</div> </div>	<div> <div>Drawing No. P 2124</div> </div>
-------	--	---	---	--	--