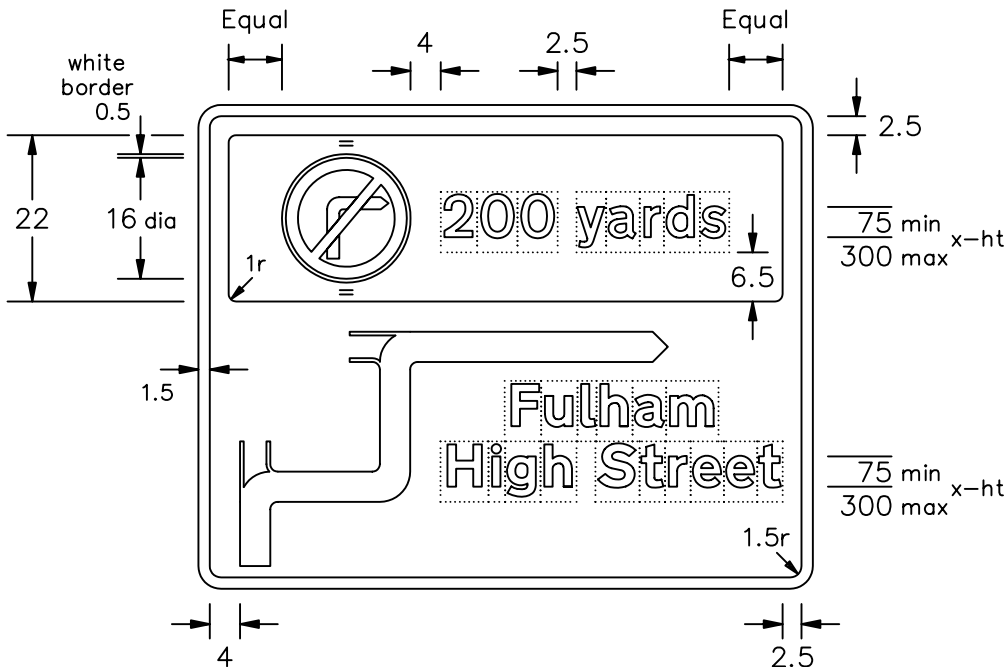
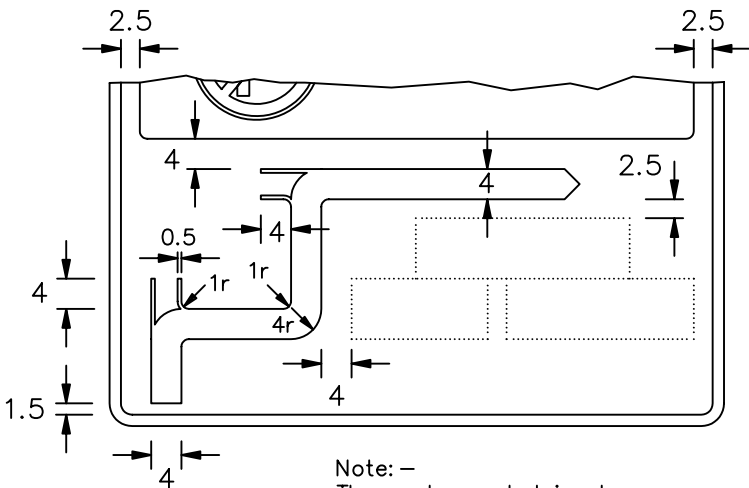


- NOTES: 1. The legend in the top panel is from the Transport Medium alphabet and from the Transport Heavy alphabet beneath the route symbol, at the x-heights shown.
2. The tile outlines do not form part of the sign.
3. The roundel is proportional to the one shown on drawing P 612 and may be varied to one shown on drawing P 613 or P 614.
4. COLOURS : Top Panel Background ----- BLUE
 " " Legend ----- WHITE
 Main Sign Background ----- WHITE
 " " Legend ----- BLACK
 Route symbol & Border --- BLACK
- Prohibitory roundel as shown on
P 612 with WHITE border added
5. DIMENSIONS : x-heights are in millimetres, other dimensions are in stroke widths. (4sw = x-height)



This drawing should be used in conjunction
with the Traffic Signs Manual Chapter 7



Note: -
The route symbol is always
4sw wide irrespective of the
status of the route indicated

P2123