



Department for
Business, Energy
& Industrial Strategy

Chemical Weapons Convention guidance notes

Annual past electronic declaration for
Schedule 2 chemicals

November 2013



© Crown copyright 2013

This publication is licensed under the terms of the Open Government Licence v3.0 except where otherwise stated. To view this licence, visit nationalarchives.gov.uk/doc/open-government-licence/version/3 or write to the Information Policy Team, The National Archives, Kew, London TW9 4DU, or email: psi@nationalarchives.gsi.gov.uk.

Where we have identified any third-party copyright information you will need to obtain permission from the copyright holders concerned.

Any enquiries regarding this publication should be sent to us at: enquiries@beis.gov.uk

Contents

Annual past electronic declaration for Schedule 2 chemicals	4
1. Background to Annual Past Declaration	5
2. Format of the Annual Past Electronic Declaration Form	5
3. Confidentiality and Security of Information (Already pre-filled but can be amended)	6
Part A. Site details	8
Part B. Plant details	10
Part C. Schedule 2 Chemical details at this site	12
Part D: Chemical sources	14
Part E: Customer details	15
Annexes to annual past declaration guidance notes for Schedule 2 chemicals	16
Annex A: Schedule 2 Chemicals	16
Annex B: Schedule 3 Chemicals	18
Annex C : Product Groups	19
Annex D: Schedule 2 Chemicals Declared by States Party	21
Annex E: Definitions	25
Annex F: Flow Chart	27
Annex G: Crown Dependencies and British Overseas Territories	28

Annual past electronic declaration for Schedule 2 chemicals

These Guidance Notes accompany a notice served under section 22(1) of the Chemical Weapons Act 1996 (“the 1996 Act”). The statutory notice requires the full and accurate completion of an electronic declaration form(s). The form(s) must be completed in accordance with these Guidance Notes. The duly completed electronic form(s) must then be submitted electronically via the Chemical Weapons Convention Declaration Database to the UK Chemical Weapons Convention National Authority. The notice specifies a date by which you must ensure that the Authority receives the completed electronic declaration form(s).

The notice under section 22(1) creates a legal obligation which must be complied with. Failure to return the completed electronic declaration form(s) by the due date without reasonable excuse is an offence contrary to section 22(3) of the 1996 Act. It is also an offence, contrary to section 22(4) of the 1996 Act, knowingly to provide false or misleading information in completing the electronic declaration form(s).

These guidance notes explain how to complete an electronic declaration of past activity in the past calendar year for Schedule 2 chemicals. You must read them carefully before completing the electronic declaration form(s).

Completed electronic declaration form(s) should be submitted electronically via the Chemical Weapons Convention Declaration Database to the National Authority no later than **the Deadline Date as specified on the Legal Notice for this declaration.**

1. Background to Annual Past Declaration

An Annual Past Declaration is required, under the Chemical Weapons Convention (CWC), for all sites which in the calendar year *given year* produced, processed or consumed one or more of the chemicals listed in Schedule 2 to the Chemical Weapons Convention in excess of:

1kg of a chemical designated "*" in Schedule 2, part A;

and/or

100 kg of any other chemical listed in Schedule 2, part A;

and/or

1 tonne of a chemical listed in Schedule 2, part B

These quantities are quantities at which electronic declarations are required to be made. They are one tenth of the verification thresholds, at which point the site can be inspected by the OPCW.

A copy of the chemicals covered under Schedule 2 of the CWC is at Annex A to these guidance notes. Declarable Schedule 3 plants also need to be detailed and a copy of the chemicals covered under Schedule 3 of the CWC is at Annex B to these guidance notes. Provided for reference, at Annex D, is a list of every Schedule 2 chemical that has been declared to the Organisation for the Prohibition of Chemical Weapons (OPCW) above its relevant site declaration threshold.

The production, processing or consumption of mixtures that contain a Schedule 2 chemical may also need to be declared. Guidance on how to deal with chemical mixtures is contained in the definitions section at Annex E to these guidance notes.

The flow chart at Annex F is for use in clarifying whether an organisation needs to make an electronic declaration, particularly in relation to mixtures, which contain Schedule 2 chemicals.

2. Format of the Annual Past Electronic Declaration Form

Part A of the electronic declaration form asks for information about the site where Schedule 2 chemicals are produced, processed or consumed.

Part B of the electronic declaration form asks for information on all plants on the site where Schedule 2 chemicals are produced, processed or consumed. At Part B a separate record must be completed for each plant producing, processing or consuming Schedule 2 chemicals, except where the total production, processing or consumption on site is under the declaration thresholds detailed in section 1 of these guidance notes. The following examples are included to help clarify this statement:

- Example 1. Three separate plants on site producing 50, 30 and 45 kg respectively of a Schedule 2, part A chemical. This example requires three separate part B submissions, one for each plant as the total is above the declaration threshold of 100kg produced over the entire site.

- Example 2. Three separate plants on site producing 20, 25 and 15 kg respectively of a Schedule 2, part A chemical. This example does not require any submissions as the total is below the declaration threshold of 100kg produced over the entire site.

Part C of the electronic declaration form asks for information on each Schedule 2 chemical above the declaration thresholds detailed in section 1 of these guidance notes. At Part C a separate record must be submitted for each Schedule 2 chemical produced, processed or consumed on site, which in total, is above the declaration threshold.

Annex A contains a list of Schedule 2 chemicals.

Annex B contains a list of Schedule 3 chemicals.

Annex C contains a list of product groups.

Annex D contains a list of every Schedule 2 chemical declared above its relevant site declaration threshold.

Annex E contains definitions of terms used in the declaration form.

Annex F contains a flow chart on whether or not a declaration is required.

Annex G contains a list of Crown and Dependent Territories

3. Confidentiality and Security of Information (Already pre-filled but can be amended)

A box should be ticked to assign a level of confidentiality to the information that is being provided. This classification only applies to actual data submitted in the electronic declaration and not to information supplied to the OPCW as part of an inspection (which may be accorded a higher category of confidentiality, if necessary).

Definitions are provided below on the types of classification. All information, including that classified "not restricted" is stored within secure areas and is only passed to those with a need to know. A protected or highly protected classification should therefore be used only in exceptional circumstances.

The definitions for each of the classifications are:

Not Restricted - Information, which is marked not restricted, will not be released by the Chemical Weapons Convention National Authority or the Organisation for the Prohibition of Chemical Weapons, unless specifically cleared for release. To request release, the OPCW would contact the NA who, in turn, would ask the company for permission to release any information.

Restricted - Information the unauthorised disclosure of which would be prejudicial to the interests of a commercial or governmental body or of a national of a State Party.

Protected - Information the unauthorised disclosure of which may cause substantial damage to the interests of a commercial or governmental body or of a national of a State Party.

Highly Protected - Sensitive, confidential information the unauthorised disclosure of which would cause serious damage from the point of view of national security or commercial secrecy to the interests of a commercial or governmental body or of a national of a State Party.

Declarations should be accorded the lowest appropriate classification. Not Restricted or Restricted should be chosen unless there is a process awaiting patent, or some other sensitive commercial consideration.

Part A. Site details

The electronic declaration should only contain information relating to a single site and not multiple sites.

Question A1/A2 – Name of site and site address (Already pre-filled)

Insert name commonly used for site and the site address. "Site" (Works, Factory) is defined as the local integration of one or more plants, with any intermediate administrative levels, which are under one operational control, and includes common infrastructure, such as:

- i) Administration and other offices;
- ii) Repair and maintenance shops;
- iii) Medical centre;
- iv) Utilities;
- v) Central analytical laboratory;
- vi) Research and development laboratories;
- vii) Central effluent and waste treatment area; and
- viii) Warehouse storage.

Question A3 – Name of Site Operator (Already pre-filled)

Insert Site operator's name.

Question A4 - Site Operator's Address (Already pre-filled)

Only complete this section if the site operator's address is different from the site address.

Questions A5 – Name of Site Owner (Already pre-filled)

Only complete this section if the site owner is different from the site operator.

Questions A6– Site Owner's Address (Already pre-filled)

Only complete this section if the site owner's address is different from the site address.

Question A7 – Number of Declarable Schedule 3 Plants at the Site (Already pre-filled)

The number of declarable Schedule 3 plants at the site needs to be identified in order to ascertain whether the site is a "mixed plant" site. This means sites that contain a plant, or plants, which are covered by more than one schedule or have different plants, which are covered by different schedules.

A copy of the chemicals covered under Schedule 3 of the CWC is at Annex B.

A Schedule 3 plant is a plant, which in *given year*, produced more than 30 tonnes of any of the chemicals listed in Schedule 3 to the CWC either as the neat chemical, or as a mixture which at any point in the operation had a concentration of Schedule 3 chemical greater than or equal to 30%, and the total amount of Schedule 3 chemical exceeded 30 tonnes.

This quantity is the threshold at which electronic declarations are required to be made. The verification threshold is 200 tonnes, at which point the site can be inspected by the OPCW.

If the answer to this question is “YES”, an electronic declaration for Schedule 3 chemicals must also be completed. Please contact the CWC National Authority if you require registering as a Schedule 3 declarer.

NB: Please also refer to the definition of production at Annex E to these guidance notes.

Question A8 – Did the Site Produce more than the Verification Threshold Quantities for a Schedule 2 Chemical in *given year*?

A "yes" response to this question should be given if in *given year* the total quantity of Schedule 2 chemicals produced, processed or consumed will exceed the following levels:

- 10 kg of a chemical designated "*" in Schedule 2, part A;

AND/OR

- 1 tonne of any other chemical listed in Schedule 2, part A;

AND/OR

- 10 tonnes of a chemical listed in Schedule 2, part B.

These quantities are the **verification** limits and are ten times the **declaration** limits stated in Section 1.

NB: Please also refer to the guidance on chemical mixtures at Annex E to these guidance notes.

Part B. Plant details

At Part B a separate record should be completed for each declarable plant (producing, processing and/or consuming Schedule 2 chemicals) on the site.

Question B1 – Plant Name (Already pre-filled)

Insert the name commonly used for a plant. "Plant" (Production facility, Workshop) is a relatively self-contained area, structure or building containing one or more units with auxiliary and associated infrastructure, such as:

- (i) Small administrative section;
- (ii) Storage/handling areas for feedstock and products;
- (iii) Effluent/waste handling/treatment area;
- (iv) Control/analytical laboratory;
- (v) First aid service/related medical section; and
- (vi) Records associated with the movement into, around and from the site, of declared chemicals and their feedstock or product chemicals formed from them, as appropriate.

Questions B2/3 – Building and Structure Name and/or Number (Already pre-filled)

Provide the name or number, if there is one, of the building or structure.

Question B4 – Plant Operator (Already pre-filled)

Only complete this section if the operator of the plant is different from the site owner, i.e. the plant is run by a sub-contractor or subsidiary company.

Question B5 – Plant Operator's Address (Already pre-filled)

Only complete this section if the plant operator's address is different from the site owner's address

Question B6/7 – Name of Plant Owner and Owner's Address (Already pre-filled)

Only complete this section if the plant owner is different from the site owner and the address is different from the site address.

Question B8 – Product Groups (Already pre-filled but can be amended)

Use the product group codes listed at Annex C to describe the products that are manufactured at this plant. Include all activities, including those involving non-scheduled chemicals.

Question B9 – Did the Plant Produce, Process or Consume the Declared Schedule 2 Chemicals (Already pre-filled but can be amended)

Tick which activity applies to the Schedule 2 chemicals at the plant.

NB: Please refer to the definitions of production, processing and consumption at Annex E to these guidance notes.

Question B10 – Did the Plant Produce, Process or Consume Schedule 2 Chemicals Whenever it Operated (Already pre-filled but can be amended)

Please confirm whether the plant produced, processed or consumed Schedule 2 chemicals whenever it operated. This will identify whether the plant is dedicated or multi-purpose. Please note the following guidance on the boxes:

- A "**dedicated**" plant is when its process configuration is dedicated to the declarable activity in relation to the Schedule 2 chemical.
- A plant is "**multipurpose**" when it is used for part of the year for any activity involving a Schedule 2 chemical and, at other times, for activities involving other chemicals.

Questions B11/12 – Other Activities Involving Declared Schedule 2 Chemicals (Already pre-filled but can be amended)

Please indicate whether activities other than production, processing and consumption were performed with the Schedule 2 chemicals and if so what they were.

Question B13 - Production Capacity of the Plant for Each Declared Schedule 2 Chemical (Already pre-filled but can be amended)

List all Schedule 2 chemicals produced at the plant and state their total production capacity (this figure is likely to be different for each Schedule 2 chemical produced). Where Schedule 2 chemicals are produced in the same equipment each Schedule 2 chemical must be listed separately.

The production capacity is the maximum potential production capacity of a plant for each Schedule 2 chemical. The basis of the calculation is the theoretical maximum output of the plant assuming production is dedicated to the Schedule 2 chemical at the maximum yield excluding downtime allowances.

“**Nameplate capacity**” is based on an optimised process that can be supported by plant data.

“**Design capacity**” is based on theoretical calculation of the maximum output of the plant.

Part C. Schedule 2 Chemical details at this site

This section relates to the plant site. If the same chemical is produced, processed or consumed in more than one plant (or at more than one concentration greater than the concentration limits in Annex E) the amounts should be combined into a single Section C for that chemical. Please also include quantities of the declared chemical, which are produced, processed or consumed in non-declarable plants at this site.

At Part C a separate record should be completed for each Schedule 2 chemical to be produced, processed and/or consumed above the declaration threshold in Section 1, or for chemical mixtures containing a Schedule 2 chemical above the threshold and greater than the concentration limits in Annex E.

Question C1 – Name of Plant(s) at which the Schedule 2 chemical was Produced, Processed or Consumed (Already pre-filled but can be amended)

In order to link a Schedule 2 chemical with a specific plant(s) please give the name of the declared plant(s), for which a Part B has been completed, in which the chemical was produced, processed or consumed.

Questions C2/3/4 – Full Description of the Schedule 2 Chemical (Already pre-filled but can be amended)

The International Union of Pure and Applied Chemistry (IUPAC) chemical name, common or trade name and the Chemical Abstracts Service registry number (if assigned) should be provided in response to these questions. The structural formula should also be included as an attachment to the declaration form, where practicable.

Question C5 – Purpose of Production, Processing or Consumption of the Schedule 2 Chemical

The purpose of production, processing or consumption of the Schedule 2 chemical should be specified. Please note the following guidance on the boxes:

- (i) If the Schedule 2 chemical was processed or consumed **on site** specify the product groups listed in Annex C. (Already pre-filled but can be amended)
- (ii) If the Schedule 2 chemical was a direct **export outside of the UK**, list the countries of destination involved in Question C8. Do not include in 'direct exports' goods sold to a trader in the UK for onward export.
- (iii) If for **sale or transfer within the UK** or to any other place under the jurisdiction of the UK, indicate whether the destination will be to industry, a trader, or another destination e.g. for waste disposal. (Already pre-filled but can be amended)
- (iv) If possible identify the final product type made using the Schedule 2 chemical, choosing from the product groups listed in Annex C. (Already pre-filled but can be amended)
- (v) If the fate of the Schedule 2 chemical is not covered in (i) to (iv) then specify the purpose for which the chemical was produced, processed or consumed. (Already pre-filled but can be amended)

Question C6 – Amount of the Schedule 2 Chemical at the Site in *given year*

Record here the total amount of the Schedule 2 chemical produced, processed, consumed, imported, exported, purchased or transferred on-site from within the UK, sold or transferred off-site within the UK e.g. external waste disposal, disposed of on-site e.g. internal waste disposal, in *given year*. If the Schedule 2 chemical is contained in a mixture, the total amount of the mixture and percentage concentration should also be provided.

NOTE – Aggregate National Data (AND)

An Aggregate National Data (AND) electronic declaration should be completed if the volume of Schedule 2 chemical production, processing and/or consumption falls below APD thresholds - see part 1 of the guidance: 'Background to Annual Past Declaration'. You will need to provide the UK National Authority with certain basic quantitative data for amalgamation and inclusion in the UK's declaration. Please contact the UK National Authority if you require registering as an Aggregate National Data (AND) declarer.

Question C7 – Imports of the Schedule 2 chemical in *given year*, from countries outside the UK

Record here the total quantities of the Schedule 2 chemical imported from outside United Kingdom of Great Britain and Northern Ireland (UK) in the year *given year* from each country. If the Schedule 2 chemical is present as a mixture, the amount of the mixture should also be provided. Please give quantities in kilograms/tons to three significant figures (where available).

Please see Annex G for countries that are Crown Dependencies and British Overseas Territories. Imports from these countries do not need to be declared.

Question C8 – Exports of the Schedule 2 chemical in *given year*, to countries outside the UK

Record here the total quantities of the Schedule 2 chemical exported outside the UK in the year *given year* to each destination country. Direct exports do not include goods sold to a trader in the UK for onward export. If the Schedule 2 chemical is present as a mixture, the amount of the mixture should also be provided. Please give quantities in kilograms/tons to three significant figures (where available).

Please see Annex G for countries that are Crown Dependencies and British Overseas Territories. Exports to these countries do not need to be declared.

Part D: Chemical sources

Part D of the electronic declaration form asks for the details of all the UK companies from whom you obtained the Schedule 2 chemicals in your possession in *given year*.

In order to ensure that the UK National Authority is aware of all relevant companies/entities involved in declarable CWC Schedule 2 chemical activities, the details of all the UK companies from whom you obtained the Schedule 2 chemicals in your possession in *given year* is required. If you do not source Schedule 2 chemicals from the UK (i.e. you import or you produce your own) Part D is not applicable.

At Part D a separate record must be completed for additional sources as necessary

Section D1 and D2 – Company Name and Address (Already pre-filled but can be amended)

Insert the name and address of the UK company(ies) from which you have sourced the Schedule 2 chemicals in your possession in *given year*.

Section D3 – Schedule 2 Chemicals Provided by the Company (Already pre-filled but can be amended)

Insert the chemical name, common or trade name and the Chemical Abstracts Service registry number (if assigned) of each Schedule 2 chemical supplied by the company detailed in Sections D1 and D2.

Part E: Customer details

Part E of the electronic declaration form asks for the details of all the UK companies to whom you sent the Schedule 2 chemicals in your possession in *given year*.

In order to ensure that the UK National Authority is aware of all the relevant companies/entities involved in declarable CWC Schedule 2 chemical activities, the details of all the UK companies you sent the Schedule 2 chemicals to in *given year* is required. If you do not sell Schedule 2 chemicals to other UK organisations (i.e. you export or you only consume and/or process without selling the mixture on (if the mixture is sold to a UK company/entity then the relevant concentration level needs applying to determine whether the customer details need to be provided)) Part E is not applicable.

At Part E a separate record must be completed for additional customers as necessary

Section E1 and E2 – Company Name and Address (Already pre-filled but can be amended)

Insert the name and address of the UK company(ies) to whom you sent the Schedule 2 chemicals in your possession in *given year*.

Section E3 – Schedule 2 Chemicals Supplied to the Company (Already pre-filled but can be amended)

Insert the chemical name, common or trade name and the Chemical Abstracts Service registry number (if assigned) of each Schedule 2 chemical supplied to the company detailed in Sections E1 and E2.

Declaration

The electronic declaration form must be electronically signed/authorised by a person of the appropriate level of responsibility who is in a position to verify the accuracy of the information and who has legal authority to sign on behalf of the company/other organisation.

Contact details can be updated using the 'Update My Details' link from the workbasket menu.

Position (Already pre-filled but can be amended)

Please choose the description which most closely matches your position within the organisation on whose behalf you are submitting the declaration.

Viewing Previous Years Declarations

To view your sites previous years electronic declarations you should access the "CWC Declarations" option on the left hand menu which goes to a search screen. You can then access and view all past declarations.

Annexes to annual past declaration guidance notes for Schedule 2 chemicals

Annex A: Schedule 2 Chemicals

Chemical	Chemical Abstract Service Number (CAS)	Annual production, processing, or consumption over which declarations are required
A Toxic Chemicals:		
1 Amiton: O,O-Diethyl 8-[2-(diethylamino)ethyl] phosphorothiolate and corresponding alkylated or protonated salts	(78-53-5)	100 kg
2 PFIB: 1,1,3,3,3-Pentafluoro-2-(trifluoromethyl)-1-propene	(382-21-8)	100 kg
3 BZ: 3-Quinuclidinyl benzilate (*)	(6581-06-2)	1 kg
B Precursors:		
4 Chemicals, except for those listed in Schedule I, containing a phosphorus atom to which is bonded one methyl, ethyl or propyl (normal or iso) group but not further carbon atoms, e.g. Methylphosphonyl dichloride Dimethylmethylphosphonate Exemption: Fonofos: O-Ethyl 8-phenyl ethylphosphonothiolothionate	(676-97-1) (756-79-6) (944-22-9)	1 tonne
5 N,N-Dialkyl (Me, Et, n-Pr or i-Pr) phosphoramidic dihalides		1 tonne
6 Dialkyl (Me, Et, n-Pr or i-Pr) N,N-dialkyl (Me, Et, n-Pr or i-Pr)-phosphoramidates		1 tonne
7 Arsenic trichloride	(7784-34-1)	1 tonne
8 2,2-Diphenyl-2-hydroxyacetic acid	(76-93-7)	1 tonne
9 Quinuclidin-3-ol	(1691-34-7)	1 tonne

Chemical	Chemical Abstract Service Number (CAS)	Annual production, processing, or consumption over which declarations are required
10 N,N-Dialkyl (Me, Et, n-Pr or i-Pr) aminoethyl-2-chlorides and corresponding protonated salts		1 tonne
11 N,N-Dialkyl (Me, Et, n-Pr or i-Pr) aminoethane-2-ols and corresponding protonated salts Exemptions: N,N-Dimethylaminoethanol and corresponding protonated salts N,N-Diethylaminoethanol and corresponding protonated salts	(108-01-0) (100-37-8)	 1 tonne
12 N,N-Dialkyl (Me, Et, n-Pr or i-Pr) aminoethane-2-thiols and corresponding protonated salts		
13 Thiodiglycol: Bis(2-hydroxyethyl) sulfide	(111-48-8)	1 tonne
14 Pinacolyl alcohol: 3,3-Dimethylbutane-2-ol	(464-07-3)	1 tonne

Annex B: Schedule 3 Chemicals

Chemicals	Chemical Abstract Service Number (CAS)	Annual production over which declarations are required
A Toxic Chemicals:		
1 Phosgene: Carbonyl dichloride	(75-44-5)	30 tonnes
2 Cyanogen chloride	(506-77-4)	30 tonnes
3 Hydrogen cyanide	(74-90-8)	30 tonnes
4 Chloropicrin: Trichloronitromethane	(76-06-2)	30 tonnes
B Precursors:		
5 Phosphorus oxychloride	(10025-87-3)	30 tonnes
6 Phosphorus trichloride	(7719-12-2)	30 tonnes
7 Phosphorus pentachloride	(10026-13-8)	30 tonnes
8 Trimethyl phosphite	(121-45-9)	30 tonnes
9 Triethyl phosphite.	(122-52-1)	30 tonnes
10 Dimethyl phosphite	(868-85-9)	30 tonnes
11 Diethyl phosphite	(762-04-9)	30 tonnes
12 Sulfur monochloride	(10025-67-9)	30 tonnes
13 Sulfur dichloride	(10545-99-0)	30 tonnes
14 Thionyl chloride	(7719-09-7)	30 tonnes
15 Ethyldiethanolamine	(139-87-7)	30 tonnes
16 Methyldiethanolamine	(105-59-9)	30 tonnes
17 Triethanolamine	(102-71-6)	30 tonnes

Annex C : Product Groups

Code	Description: Chemicals and Related Products
511	Hydrocarbons and their halogenated, sulphonated, nitrated or nitrosated derivatives
512	Alcohols, phenols, phenol-alcohols, and their halogenated, sulphonated, nitrated or nitrosated derivatives
513	Carboxylic acids and their anhydrides, halides, peroxides and peroxyacids; their halogenated, sulphonated, nitrated or nitrosated derivatives
514	Nitrogen-function compounds
515	Organo-inorganic compounds, heterocyclic compounds, nucleic acids and their salts, and sulphonamides
516	Other organic chemicals
522	Inorganic chemical elements, oxides and halogen salts
523	Metal salts and peroxysalts, of inorganic salts
524	Other inorganic chemicals; organic and inorganic compounds of precious metals
525	Radioactive and associated materials
531	Synthetic organic colouring matter and colour lakes, preparations based thereon
532	Dyeing and tanning extracts, and synthetic tanning materials
533	Pigments, paints, varnishes and related materials
541	Medicinal and pharmaceutical products, other than medicaments of Group 542
542	Medicaments (including veterinary medicaments)
551	Essential oils, perfume and flavour materials
553	Perfumery, cosmetic or toilet preparations (excluding soaps)
554	Soap, cleansing and polishing preparations
562	Fertilizers (other than those of Group 272)
571	Polymers of ethylene, in primary forms
572	Polymers of styrene, in primary forms
573	Polymers of vinyl chloride or of other halogenated olefins in primary forms
574	Polyacetals, other polyethers and epoxide resins, in primary forms; Polycarbonates, alkyd resins, polyallyl esters and other polyesters
575	Other plastics, in primary forms
579	Waste, parings and scraps, of plastics

Code	Description: Chemicals and Related Products
581	Tubes, pipes and hoses, and fittings therefor, of plastics
582	Plates, sheets, film, foil and strip, of plastics
583	Monofilament of which any cross-sectional dimension exceeds 1mm, rods, sticks and profile shapes, whether or not surface-worked but not otherwise worked, of plastics
591	Insecticides, rodenticides, fungicides, herbicides, anti-sprouting products, put up in forms or packings for retail sale or as preparations or articles (e.g. sulphur-treated bands, wicks and candles, and fly papers)
592	Starches, inulin and wheat gluten; albuminoidal substances; glues
593	Explosives and pyrotechnic products
597	Prepared additives for mineral oils and the like; Prepared liquids for hydraulic transmission; Anti-freezing preparations and prepared de-icing fluids; Lubricating preparations
598	Miscellaneous chemical products
599	Others

Annex D: Schedule 2 Chemicals Declared by States Party

Schedule	CAS Number	Chemical Name
Schedule 2		
2A01	78-53-5	O,O-Diethyl S-2-diethylaminoethyl phosphorothiolate
2A02	382-21-8	1,1,3,3,3-Pentafluoro-2-(trifluoromethyl)-1-propene
2A03	6581-06-2	3-Quinuclidinyl benzilate
2B041		Sodium O-(cyclohexylmethyl) isopropylphosphonothiolate
2B041		Sodium O-(cyclohexylmethyl) propylphosphonothiolate
2B041		Sodium O-heptyl isopropylphosphonothiolate
2B041		Sodium O-(1-ethylpropyl) propylphosphonothiolate
2B041		Sodium O-ethyl isopropylphosphonothiolate
2B041		Isopropyl ethylphosphonochloridate
2B041		Sodium O-isopropyl isopropylphosphonothiolate
2B041		Sodium O-propyl propylphosphonothiolate
2B041		Sodium O-butyl isopropylphosphonothiolate
2B041		Sodium O-butyl propylphosphonothiolate
2B041		Isobutyl isopropylphosphonochloridate
2B041		Isobutyl propylphosphonochloridate
2B041		Sec-butyl isopropylphosphonochloridate
2B041		Sodium O-(sec-butyl) isopropylphosphonothiolate
2B041		Sec-butyl propylphosphonochloridate
2B041		Sodium O-(1-methylbutyl) propylphosphonothiolate
2B041	1066-50-8	Ethylphosphonic dichloride
2B041		Methyl hydrogen methylphosphonate
2B041		S-Methyl methylphosphonochloridothiolate
2B041	133826-40-1	Phenyl methylphosphonofluoridate
2B041		2-Ethylhexyl hydrogen methylphosphonate
2B041	138780-00-4	(E)-2-Butenyl methylphosphonofluoridate
2B041	1445-75-6	Diisopropyl methylphosphonate

Schedule	CAS Number	Chemical Name
2B041	1498-46-0	Isopropylphosphonic dichloride
2B041	1538-69-8	Diethyl isopropylphosphonate
2B041		Isobutyl methylphosphonochloridate
2B041	18755-43-6	Dimethyl propylphosphonate
2B041	18812-51-6	Diethyl propylphosphonate
2B041		Sodium O-ethyl methylphosphonothiolate
2B041		O-Ethyl hydrogen methylphosphonothiolate
2B041	2404-73-1	Dibutyl methylphosphonate
2B041		1-Methyl-2-propynyl methylphosphonofluoridate
2B041	4672-38-2	Propylphosphonic acid
2B041	4708-04-7	Propylphosphonic dichloride
2B041		Sodium O-propyl methylphosphonothiolate
2B041	5284-09-3	Ethyl methylphosphonochloridate
2B041		Methylphosphonothioic O,O-acid
2B041	676-97-1	Methylphosphonic dichloride
2B041		Ethylphosphonic acid
2B041	683-08-9	Diethyl methylphosphonate
2B041		2,4,6-Tripropyl-1,3,5,2,4,6-trioxatriphosphinane 2,4,6-trioxide
2B041	7040-58-6	Dipinacolyl methylphosphonate
2B041		Dipropyldiphosphonic acid
2B041		S-Methyl hydrogen methylphosphonothiolate
2B041	756-79-6	Dimethyl methylphosphonate
2B041	78-38-6	Diethyl ethylphosphonate
2B041		Sodium O-isopropyl methylphosphonothiolate
2B041		Methylphosphonic acid
2B042		Butyl methylphosphinate
2B043	15715-41-0	Diethyl methylphosphonite
2B043	25235-15-8	Isopropylphosphonous dichloride
2B043		Diethyl ethylphosphonite
2B043		Diethyl isopropylphosphonite

Schedule	CAS Number	Chemical Name
2B043	676-83-5	Methylphosphonous dichloride
2B043		Ethyl hydrogen methylphosphonite
2B045		Sodium O-decyl methylphosphonothionate
2B045		Sodium O-(1-ethylpropyl) ethylphosphonothionate
2B045		Sodium O-(1,2-dimethylpropyl) ethylphosphonothionate
2B045		N-Ethylbenzenaminium O-(1,2-dimethylpropyl) methylphosphonothionate (+)
2B045		N-Ethylbenzenaminium O-(1,2-dimethylpropyl) methylphosphonothionate (-)
2B045		Sodium O-(1-methylbutyl) methylphosphonothiolate
2B045		Sodium O-(1,2,2-trimethylpropyl) ethylphosphonothionate
2B045		Sodium O-(1-methylpentyl) ethylphosphonothionate
2B045		Sodium O-ethyl propylphosphonothionate
2B045		N-Dicyclohexylammonium O-(2,2-dimethylpropyl) methylphosphonothionate
2B045		N-Ethylbenzenaminium O-neopentyl methylphosphonothionate
2B045		Sodium O-neopentyl methylphosphonothionate
2B045		Sodium O-(1-ethylbutyl) ethylphosphonothionate
2B045		Ethylphosphonothioic acid
2B045		Ethyl ethylphosphonochloridothionate
2B045	1497-69-4	O-Methyl ethylphosphonochloridothionate
2B045	18005-40-8	O-Ethyl hydrogen methylphosphonothionate
2B045		O-Isobutyl hydrogen methylphosphonothionate
2B045		O-Methyl methylphosphonochloridothionate
2B045	2524-16-5	O-Ethyl methylphosphonochloridothionate
2B045	676-98-2	Methylphosphonothioic dichloride
2B045		Sodium O-methyl methylphosphonothiolate
2B045		Sodium O-isobutyl methylphosphonothionate
2B045	993-43-1	Ethylphosphonothioic dichloride
2B045		Methylphosphonothioic dichloride

Schedule	CAS Number	Chemical Name
2B045		Isopropylphosphonothioic O,O-acid
2B045		Propylphosphonothioic O,O-acid
2B05		N,N-Diethylphosphoramidic dichloride
2B05	23306-80-1	N,N-Diisopropylphosphoramidic dichloride
2B05	40881-98-9	N,N-Dipropylphosphoramidic dichloride
2B05	677-43-0	N,N-Dimethylphosphoramidic dichloride
2B07	7784-34-1	Arsenic trichloride
2B08	76-93-7	2,2-Diphenyl-2-hydroxyacetic acid
2B09	1619-34-7	3-Quinuclidinol
2B10	100-35-6	2-N,N-Diethylaminoethyl chloride
2B10	107-99-3	2-N,N-Dimethylaminoethyl chloride
2B10		2-N,N-Diethylaminoethyl chloride
2B10		2-N,N-Dimethylaminoethyl chloride
2B10		2-N,N-Dipropylaminoethyl chloride
2B10		2-N,N-Diisopropylaminoethyl chloride hydrochloride
2B10		2-N,N-Dimethylaminoethyl chloride hydrochloride
2B10		2-N,N-Diethylaminoethyl chloride hydrochloride
2B10	96-79-7	2-N,N-Diisopropylaminoethyl chloride
2B11	3238-75-3	2-N,N-Dipropylaminoethanol
2B11	96-80-0	2-N,N-Diisopropylaminoethanol
2B12	100-38-9	2-N,N-Diethylaminoethanethiol
2B12	108-02-1	2-N,N-Dimethylaminoethanethiol
2B12		2-N,N-Dimethylaminoethanethiol hydrochloride
2B12		2-N,N-Diethylaminoethanethiol hydrochloride
2B12		Sodium 2-(diethylamino)ethanethiolate
2B12		2-N,N-Diisopropylaminoethanethiol hydrochloride
2B12	5842-06-8	2-N,N-Dipropylaminoethanethiol
2B12	5842-07-9	2-N,N-Diisopropylaminoethanethiol
2B13	111-48-8	Bis(2-hydroxyethyl)sulfide
2B14	464-07-3	3,3-Dimethyl-2-butanol

Annex E: Definitions

The definitions below follow the definitions in the Chemical Weapons Convention and might be slightly different from their normal meaning within the chemical industry.

Production

Production is defined under the CWC as “formation through a chemical reaction or synthesis” - that is, arising from a chemical change involving the formation and/or breaking of chemical bonds.

It is understood, for declaration purposes, to include all steps in the production of a chemical in any units within the same plant through chemical reaction, including any associated processes (e.g. purification, separation, extraction, distillation, or refining) in which the chemical is not converted into another chemical. The exact nature of any associated process (e.g. purification, etc.) is not required to be declared.

It is also understood, for declaration purposes, to include intermediates, by-products, or waste products that are produced and consumed within a defined chemical manufacturing sequence, where such intermediates, by-products, or waste products are chemically stable and therefore exist for a sufficient time to make isolation from the manufacturing stream possible, but where, under normal or design operating conditions, isolation does not occur.

Processing

Processing is physical manipulation of a chemical without a chemical reaction taking place that is without the formation or breaking of chemical bonds. Examples of processing include formulation, extraction, purification, crystallisation, distillation, condensation, consumption, dilution, concentration, compression and dispersion. Any waste disposal processes occurring on site involving a Schedule 2 chemical, which do not result in the consumption of that chemical (e.g. disposal of waste containing a Schedule 2 chemical in a landfill on site or blending of such waste with other materials), should also be considered as processing. However, activities such as repackaging and distribution are not considered to be processing.

Consumption

Consumption of a chemical means its conversion into another chemical through a chemical reaction involving the making or breaking of chemical bonds. Therefore, some forms of waste disposal in which the Schedule 2 chemical is converted into another chemical, such as incineration, biodegradation or hydrolysis, e.g. in a scrubber system, should be considered as consumption.

Import

An import is the physical movement of scheduled chemicals into the territory or any other place under the jurisdiction or control of the UK from the territory or any other place under the jurisdiction or control of another country, excluding transit operations.

You must specify the country from which the scheduled chemicals were dispatched, excluding the countries through which the scheduled chemicals transited and regardless of the country in which the scheduled chemicals were produced.

Declare chemicals that are directly imported by your organisation from outside the UK. Direct imports do not include imported goods bought from or through a trader in the UK. Imports from the Crown Dependencies and British Overseas Territories (Annex G) do not need to be declared.

Export

An export is the physical movement of scheduled chemicals out of the territory or any other place under the jurisdiction or control of the UK into the territory or any other place under the jurisdiction or control of another country, excluding transit operations. You must specify the intended country of destination, excluding the countries through which the scheduled chemicals transited.

Declare chemicals directly exported by your organisation to outside the UK. Direct exports do not include goods sold to a trader in the UK for onward export. Exports to the Crown Dependencies and British Overseas Territories (Annex G) do not need to be declared.

Transit Operation

Transit operations are the physical movements in which scheduled chemicals pass through the territory of a country on the way to their intended country of destination. Transit operations include changes in the means of transport, including temporary storage only for that purpose.

Chemical Mixtures

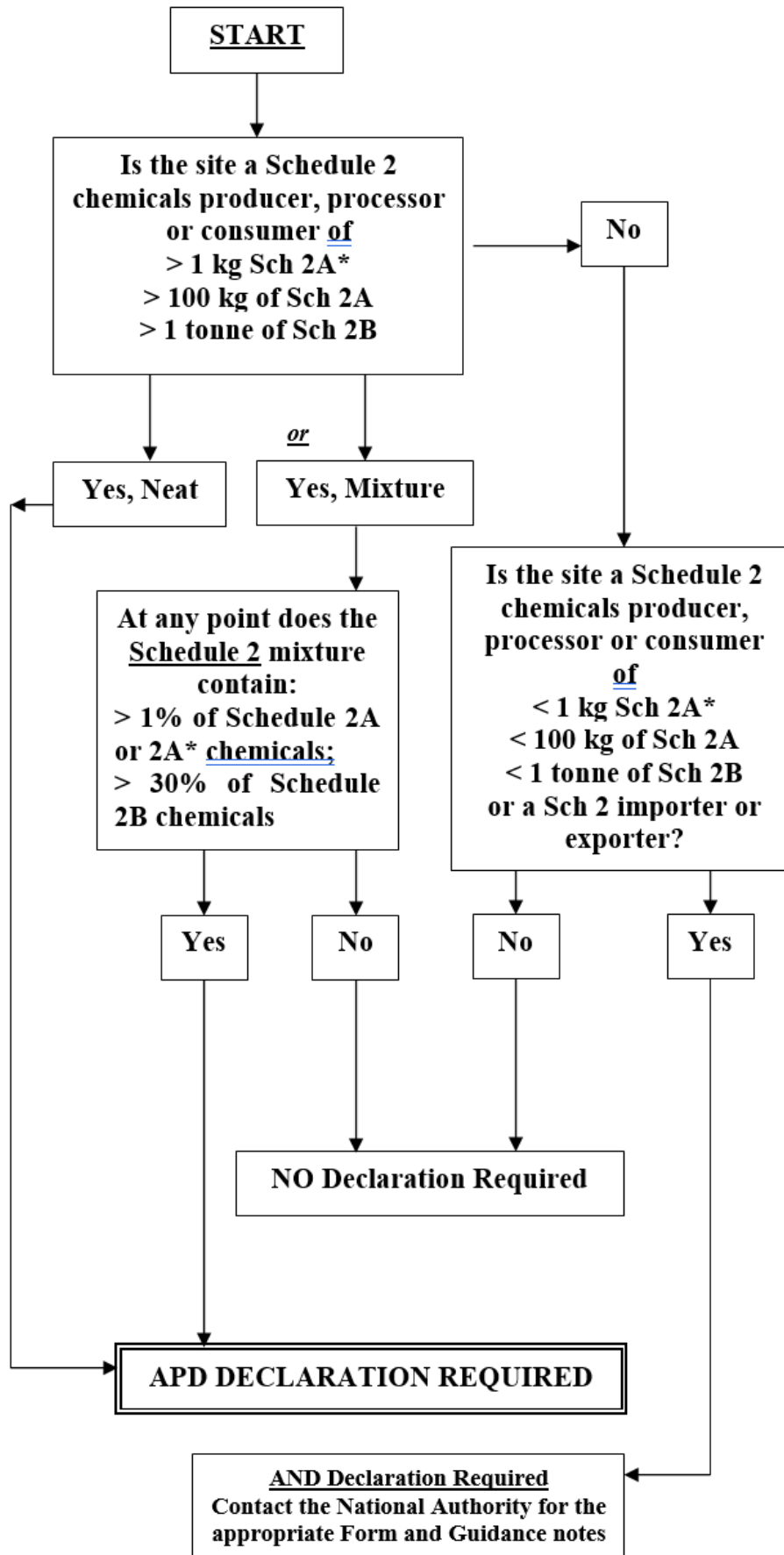
An electronic declaration is required for mixtures containing Schedule 2 chemicals where, at any point in the operation, the concentration of the Schedule 2 chemical(s) is greater than the following:

- Production/processing/consumption of Schedule 2A and 2A* - 1%.
- Production/ processing/consumption of Schedule 2B - 30%.

These concentration levels also apply to the import and export of chemical mixtures containing Schedule 2A and 2A* chemicals and Schedule 2B chemicals (i.e. 1% and 30% respectively).

It is important to note that if the trigger thresholds mentioned in part 1 of the guidance are not exceeded then an AND declaration is required. Please contact the UK National Authority to register as an AND declarer.

Annex F: Flow Chart



Annex G: Crown Dependencies and British Overseas Territories

Crown Dependencies

- Guernsey
- Isle of Man
- Jersey

British Overseas Territories

- Anguilla
- Bermuda
- British Antarctic Territory
- British Indian Ocean Territory
- British Virgin Islands
- Cayman Islands
- Falkland Islands
- Gibraltar
- Montserrat
- Pitcairn Islands
- South Georgia and the South Sandwich Islands
- St Helena (with sub-dependencies Tristan da Cunha and Ascension Island)
- Turks and Caicos Islands

This publication is available from: www.gov.uk/government/publications/chemical-weapons-convention-how-to-complete-a-declaration

If you need a version of this document in a more accessible format, please email enquiries@beis.gov.uk. Please tell us what format you need. It will help us if you say what assistive technology you use.