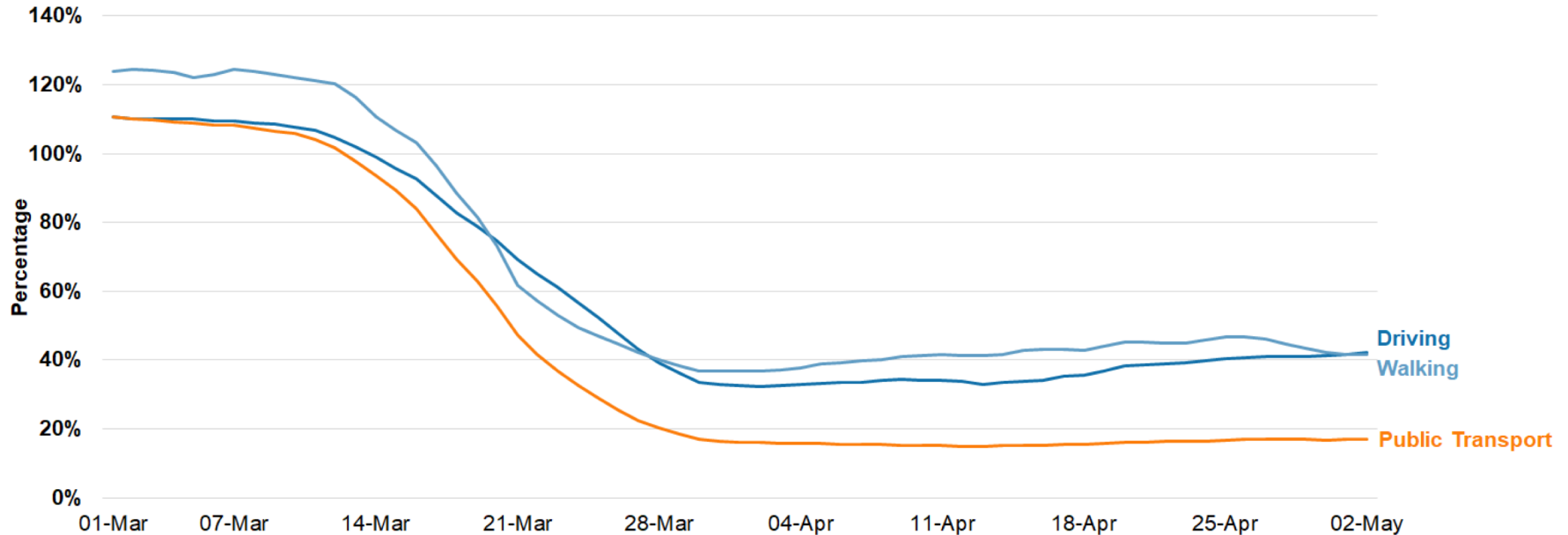


## Five tests for adjusting the lockdown

- The NHS has sufficient capacity to provide critical care and specialist treatment right across the UK
- A sustained and consistent fall in daily deaths from Coronavirus
- Reliable data to show that the rate of infection is decreasing to manageable levels across the board
- Operational challenges including testing and PPE are in hand with supply able to meet future demand
- Confident that any adjustments to the current measures will not risk a second peak of infections that overwhelms the NHS

## Apple mobility trends data for UK - seven day rolling average

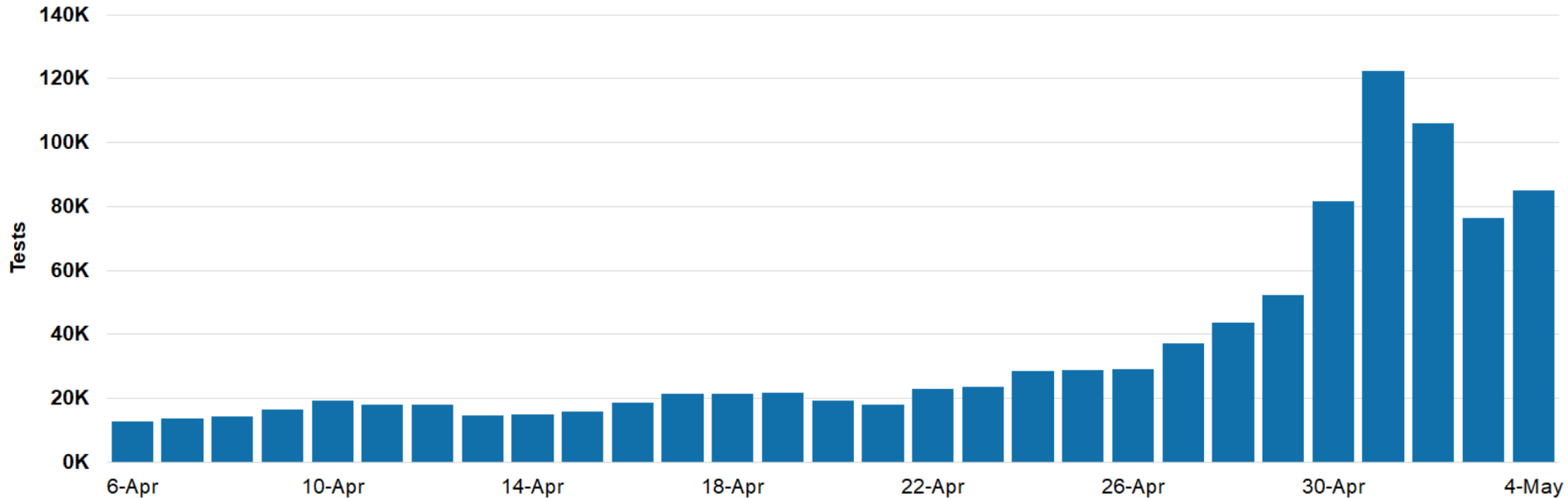
Since lockdown the number of requests for directions involving walking, driving or public transport has decreased. The number of requests for directions involving public transport has dropped by over 80% from normal usage. From the 4th April to 2nd May the number of requests for driving directions has increased by around 9 percentage points.



**STAY HOME > PROTECT THE NHS > SAVE LIVES**

## Daily Tests (UK)

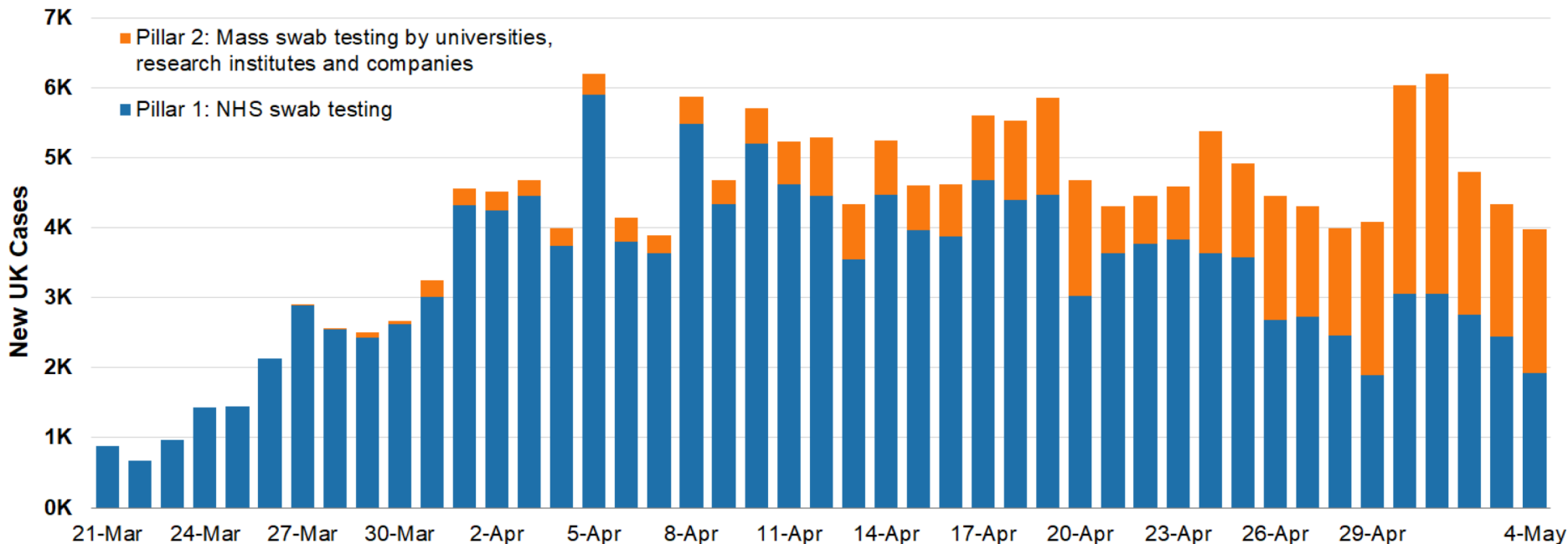
As of 9am 4th May, there have been 1,291,591 tests in total. In the 24 hours up to 9am on 4th May, there were 85,186 tests in the UK.



Source: DHSC/NHSX, NHSE, Welsh Gov., Scottish Gov., Northern Ireland Executive. The number of tests includes; (i) tests processed through our labs, and (ii) tests sent to individuals at home or to satellite testing locations.

## New Cases (UK)

On 4th May 3,985 new cases were recorded. There are likely to be more cases than recorded here.

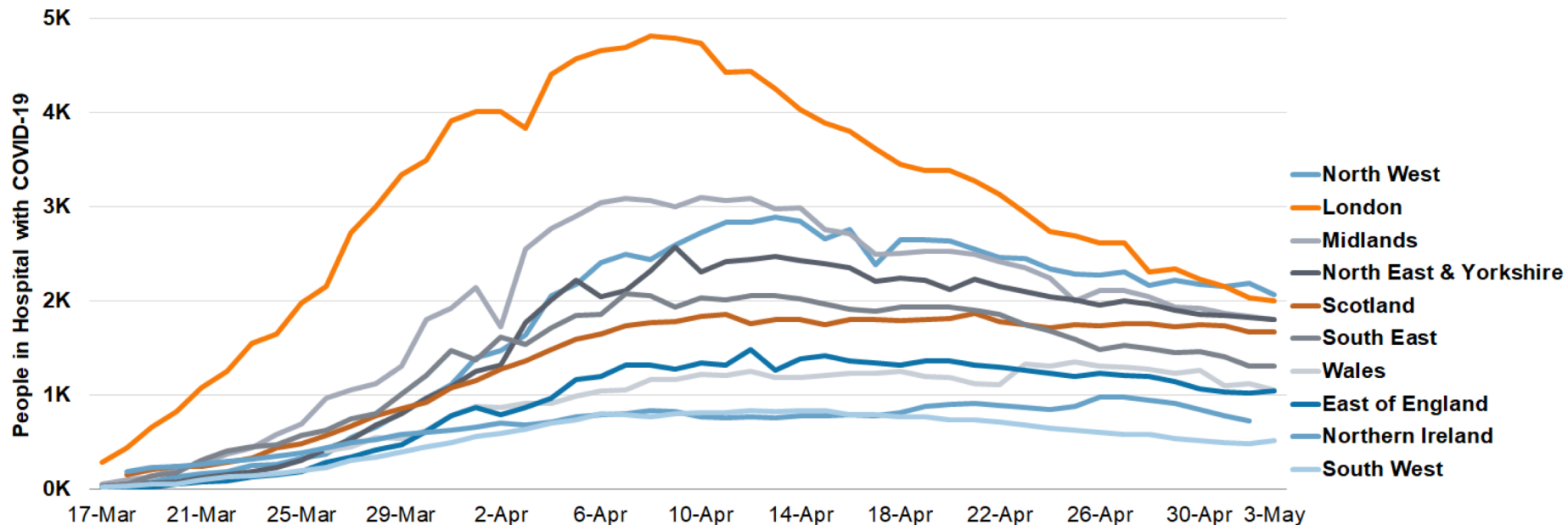


Source: Department of Health and Social Care. Pillar 1: Swab testing in PHE labs and NHS hospitals for those with a medical need and, where possible, the most critical key workers. Pillar 2: Mass swab testing for critical workers in the NHS, social care and other sectors and symptomatic household members, delivered by a partnership of universities, research institutes and companies. Cases are reported when lab tests are completed. This may be a few days after initial testing.

**STAY HOME > PROTECT THE NHS > SAVE LIVES**

## People in Hospital with COVID-19 (UK)

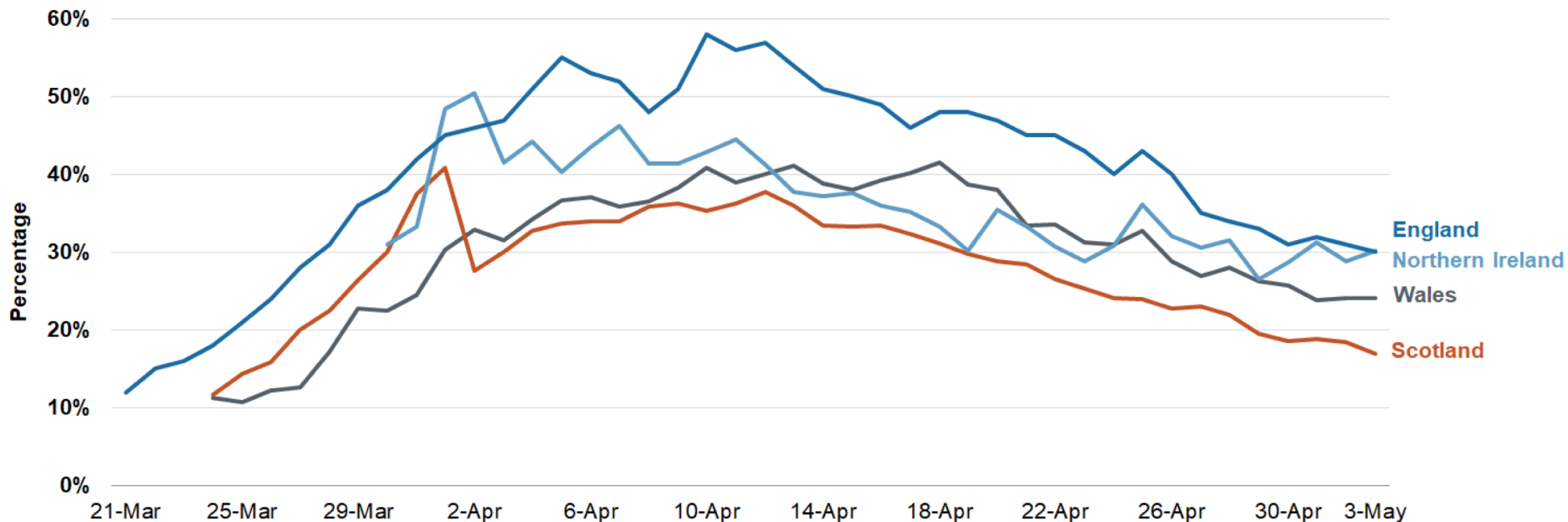
Over the last week the number of people with COVID-19 in GB hospitals has fallen from 15,322 to 13,258, a decrease of 13%.



Source: NHSE, Welsh Gov., Scottish Gov., Northern Ireland Executive. National data may not be directly comparable as data about COVID-19 patients in hospitals is collected differently across nations. Community hospitals are included in figures for Wales from 23 April onwards. Due to an issue with the data warehouse in Northern Ireland, the latest figures have not been updated.

## Critical Care Beds with COVID-19 patients (UK)

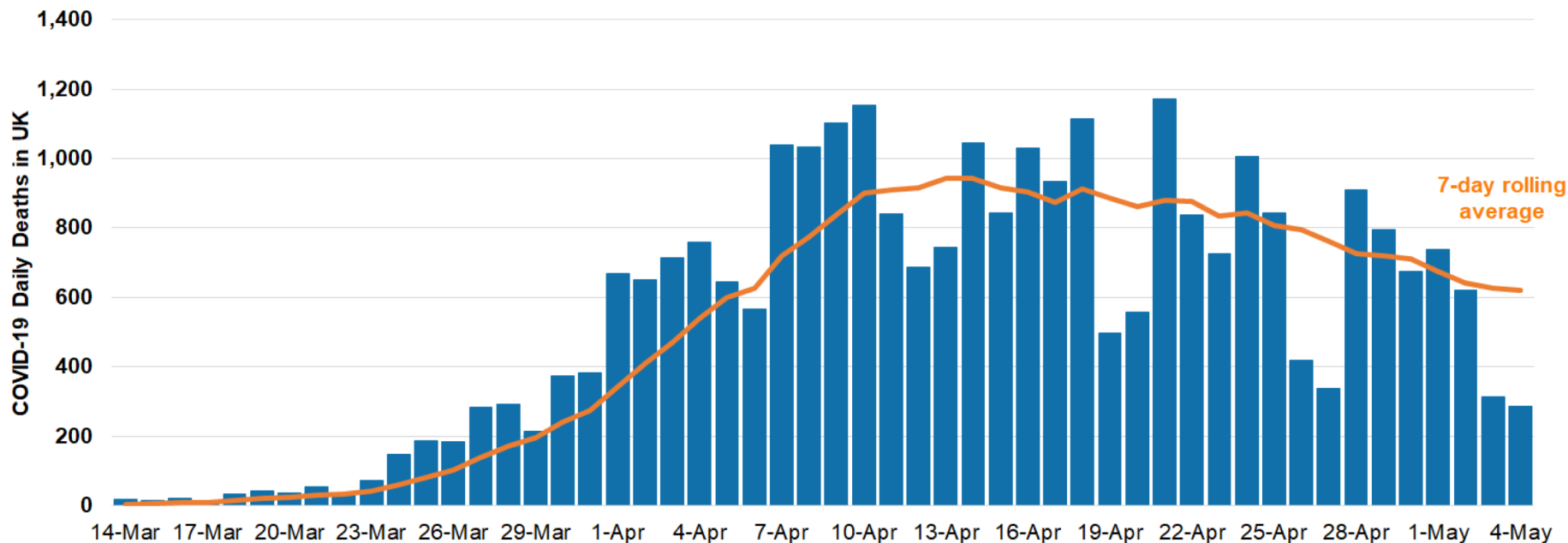
Less than a third of critical care beds are occupied by COVID-19 patients. This has been decreasing for most of the UK over the last 2 weeks.



Source: NHSE, Welsh Gov., Scottish Gov., Northern Ireland Executive. Different health systems collect this data differently. In England critical care beds count high dependency units / intensive therapy unit beds as critical care beds, in Wales critical care beds are taken to be invasive ventilation beds including new surge capacity, in Scotland critical care beds include ICU beds and additional surge capacity, and in Northern Ireland critical care beds includes all ICU beds.

## Daily COVID-19 Deaths in All Settings (UK)

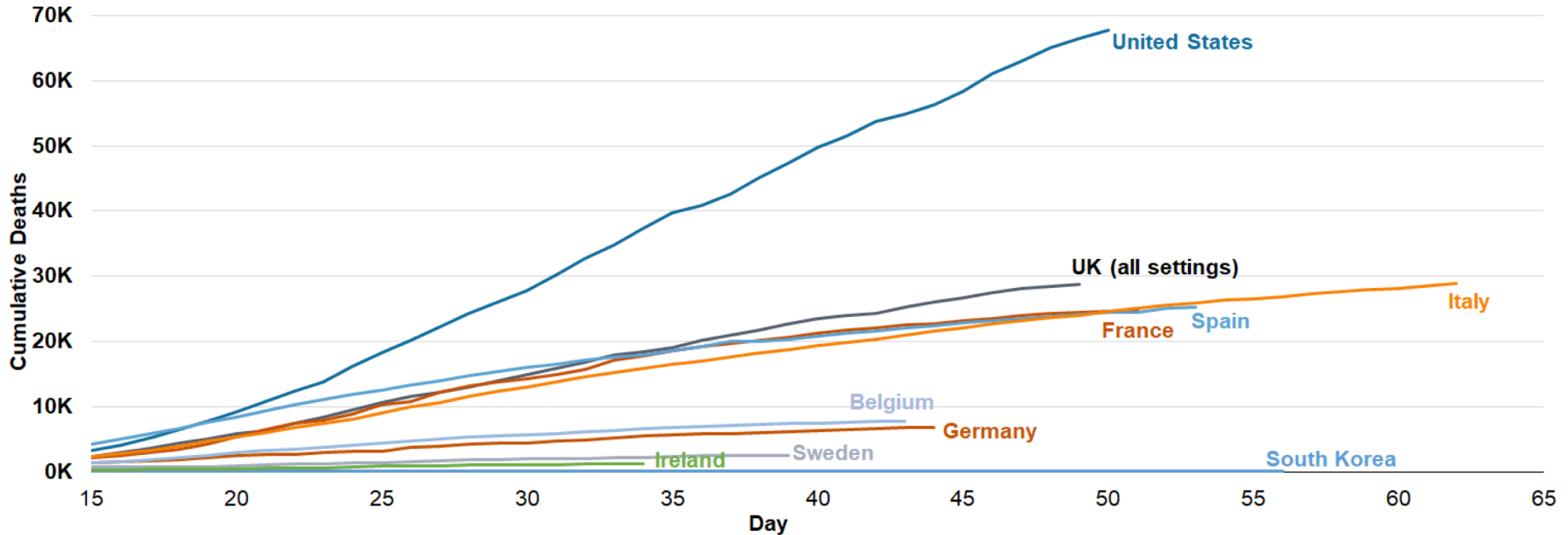
There were an additional 288 deaths of people who had tested positive for coronavirus.



Source: Department of Health and Social Care, sourced from Public Health England and the devolved administrations. 7-day rolling average (mean) of daily deaths.

## Global Death Comparison

Different countries have different methods of counting COVID-19 deaths which means it is difficult to compare statistics across countries.



Source: Public Health England, UK devolved administrations, Johns Hopkins University. Country data is aligned by stage of the outbreak. Day 0 equals the first day 50 cumulative deaths were reported. UK figures on deaths relate to those who have tests positive for COVID-19, whichever setting they died in. International reporting procedures and lags are unclear, so may not be comparing like-for-like.