



08 April 2020

Year: 2020 Week: 14

In This Issue:

- Key Messages.
- Weekly summary.
- Total contacts.
- Syndromic indicators.
- Notes and caveats.
- Further information.
- Acknowledgements.

Syndromic indicators at a glance:

Number of contacts and percentage of Read coded contacts.

1: Total out-of-hours contacts:

Daily total number of out-of-hours and unscheduled contacts and 7 day average (adjusted for bank holidays).

Key messages

Data to:

05 April 2020

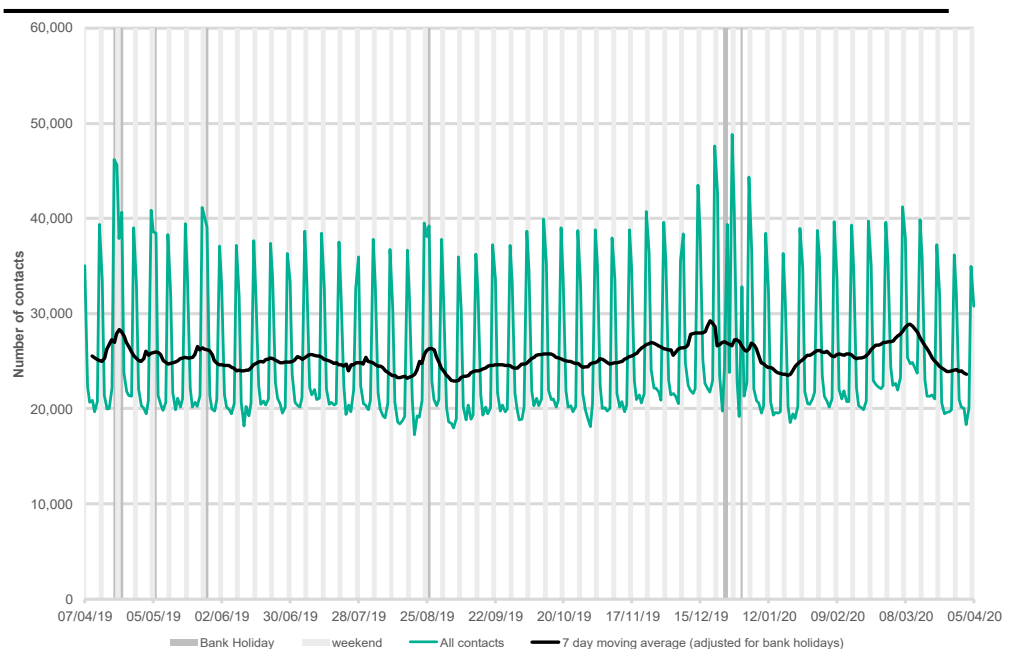
During week 14, there were decreases in GP out-of-hours consultations for acute respiratory infection and influenza-like illness (ILI; figures 2 & 3). Consultations for ILI remain highest in the 15+ years age groups (figure 3a). Difficulty breathing/wheeze/asthma consultations continue to increase in the 45-64 years age group (figure 5a).

A Cold Watch System operates in England from 1 November to 31 March each year. As part of the Public Health England Cold Weather Plan for England the PHE Real-time Syndromic Surveillance Team will be monitoring the impact of cold weather on syndromic surveillance data during this period.

Cold weather alert level (current reporting week): **Level 1 Winter preparedness**
<http://www.metoffice.gov.uk/weather/uk/coldweatheralert/>

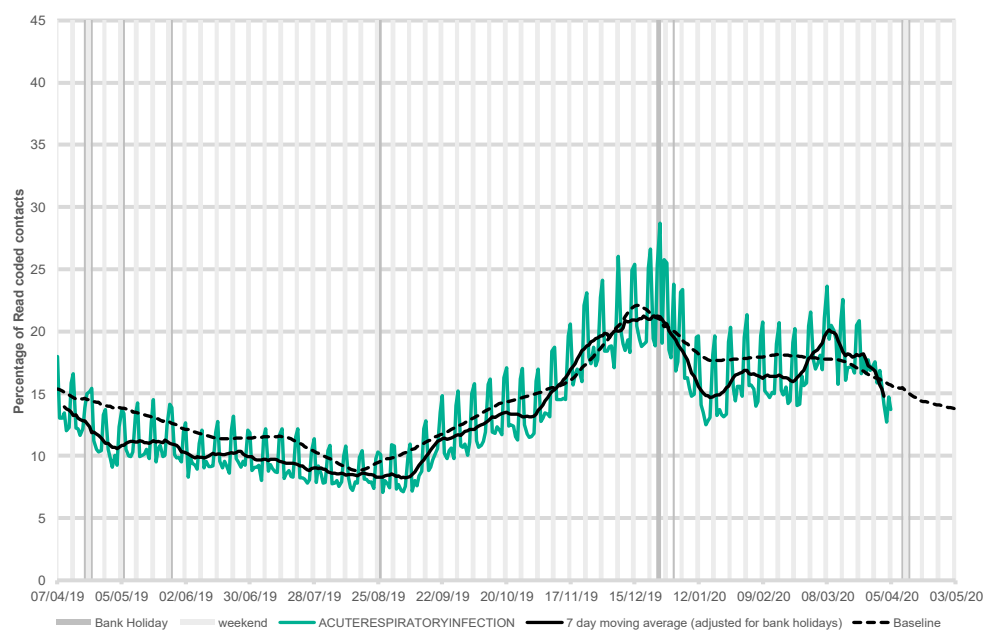
Key indicator	No. of contacts	% Week 14	% Week 13	Trend*
All OOH contacts, all causes	165,201			
Acute respiratory infection	8,620	14.68	17.26	↓
Influenza-like illness	1,798	3.06	3.55	↓
Bronchitis/bronchiolitis	98	0.17	0.19	↔
Difficulty breathing/wheeze/asthma	2,628	4.48	4.70	↓
Pharyngitis	26	0.04	0.03	↔
Gastroenteritis	1,520	2.59	2.74	↓
Diarrhoea	443	0.75	0.79	↔
Vomiting	618	1.05	1.01	↔
Myocardial infarction	919	1.57	1.48	↑

*Trend: reports on the trend seen over previous weeks in the percentage of Read coded contacts.



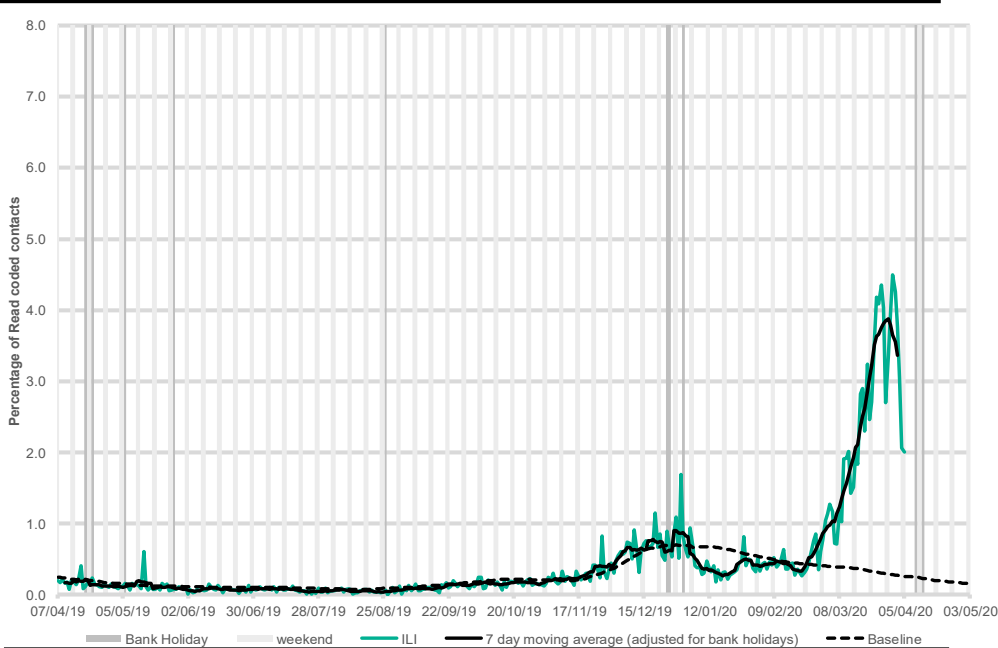
2: Acute Respiratory Infection daily contacts.

Shown as a percentage of the total contacts with a Read code and as a 7 day average*.



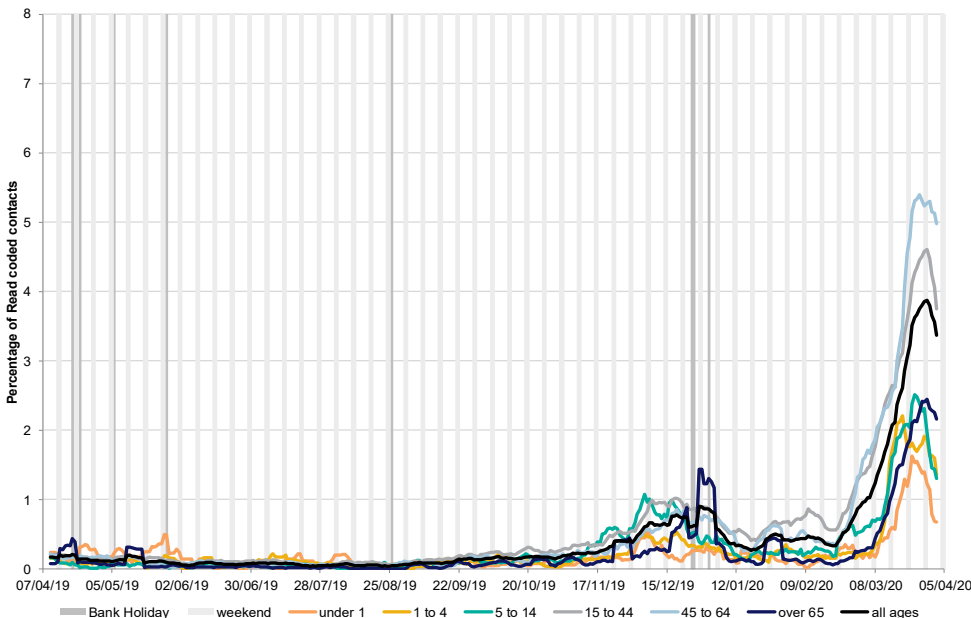
3: Influenza-like illness daily contacts.

Shown as a percentage of the total contacts with a Read code and as a 7 day average*.



3a: Influenza-like illness by age group.

As a percentage of total contacts within each age group, shown as a 7 day moving average adjusted for bank holidays.

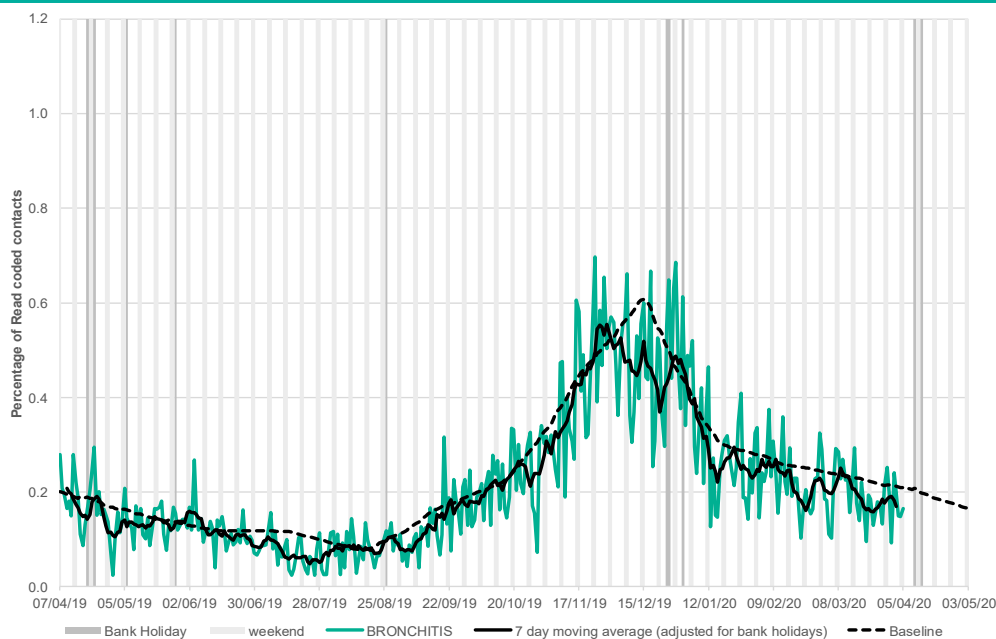


08 April 2020

Year: 2020 Week: 14

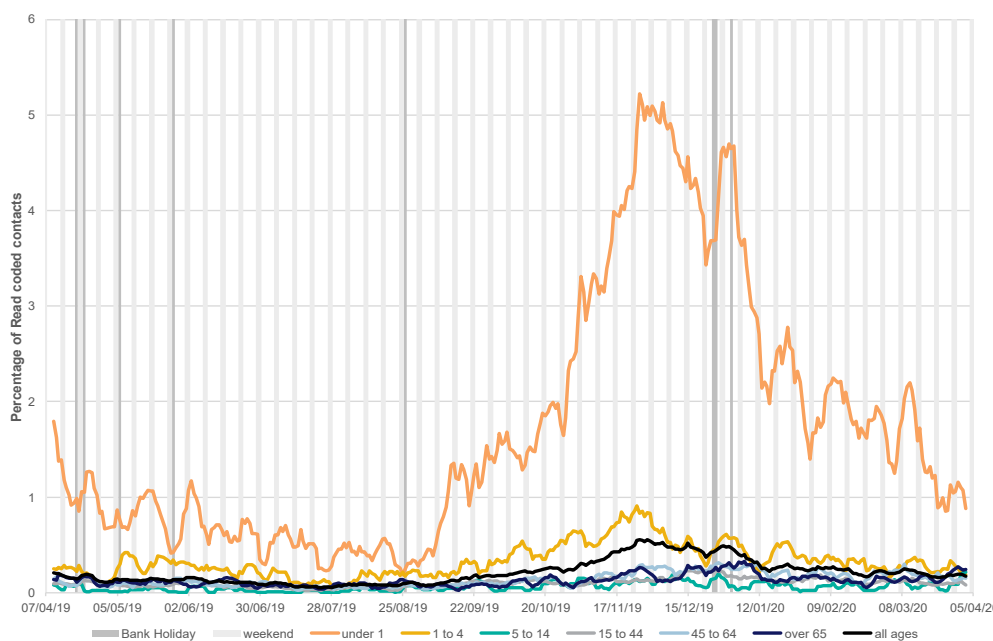
**4: Bronchitis/
bronchiolitis daily
contacts.**

Shown as a percentage of the total contacts with a Read code and as a 7 day average*.



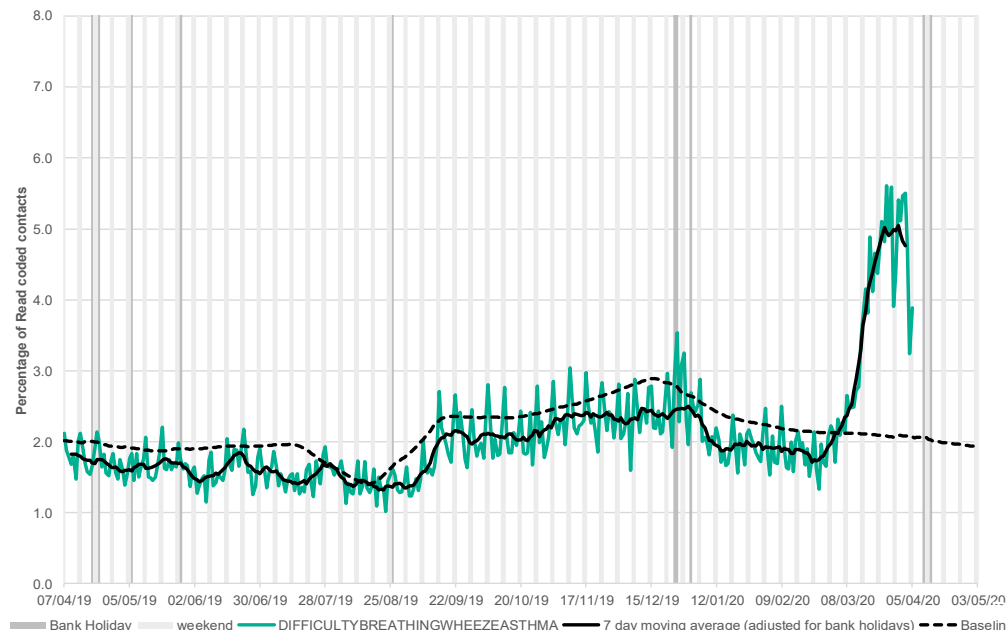
**4a: Bronchitis/
bronchiolitis daily
contacts by age
group*.**

As a percentage of total contacts within each age group, shown as a 7 day moving average adjusted for bank holidays.



**5: Difficulty breathing/
wheeze/asthma daily
contacts.**

Shown as a percentage of the total contacts with a Read code and as a 7 day average*.



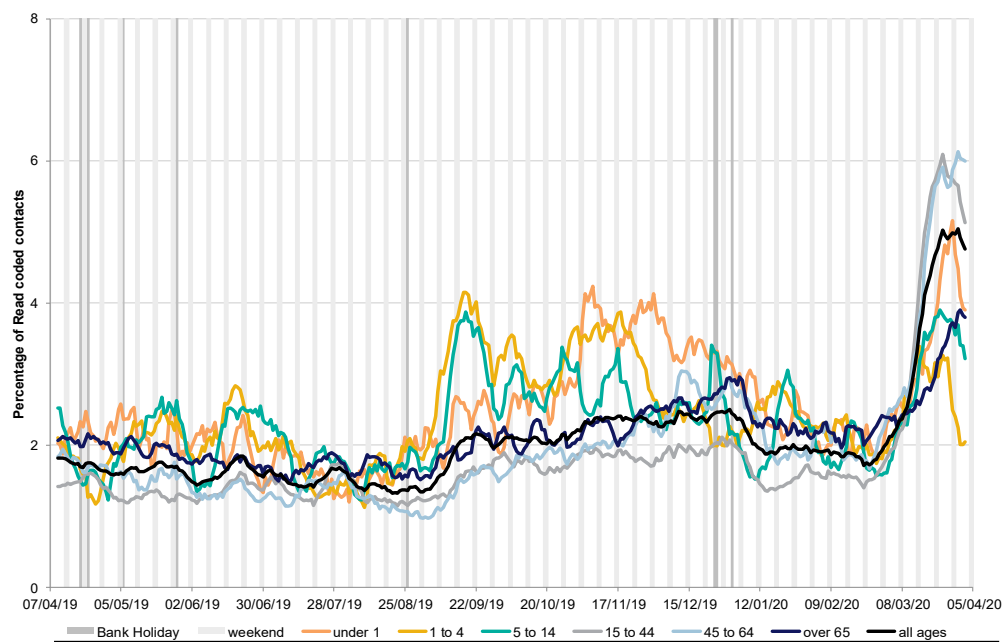
*7-day moving average
adjusted for bank
holidays.

08 April 2020

Year: 2020 Week: 14

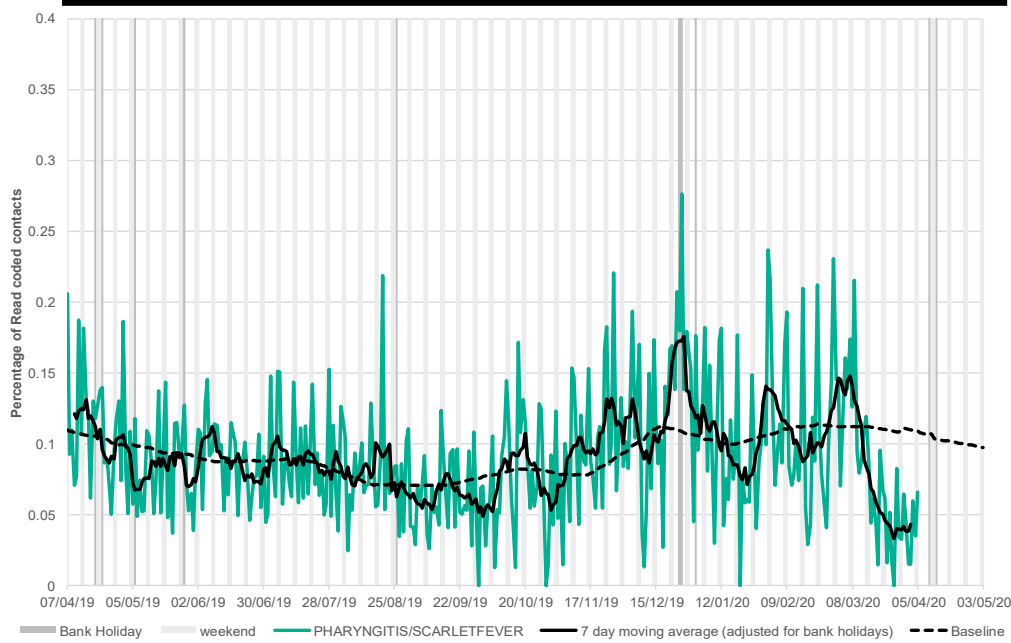
5a: Difficulty breathing/wheeze/asthma daily contacts by age group*.

As a percentage of total contacts within each age group, shown as a 7 day moving average adjusted for bank holidays.



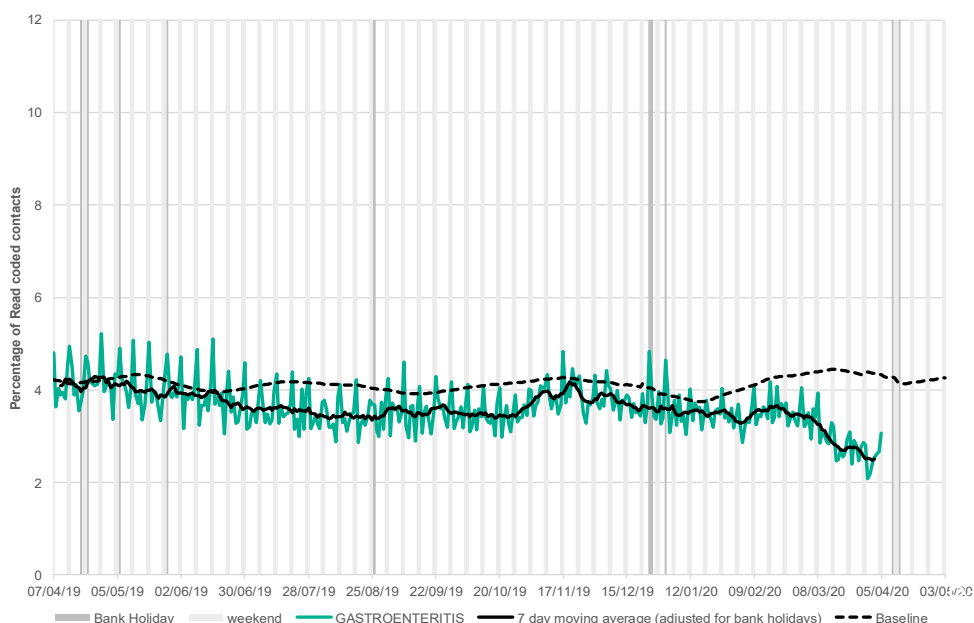
6: Acute pharyngitis and persistent sore throat.

Shown as a percentage of the total contacts with a Read code and as a 7 day average*.



7: Gastroenteritis daily contacts

Shown as a percentage of the total contacts with a Read code and as a 7 day average*.



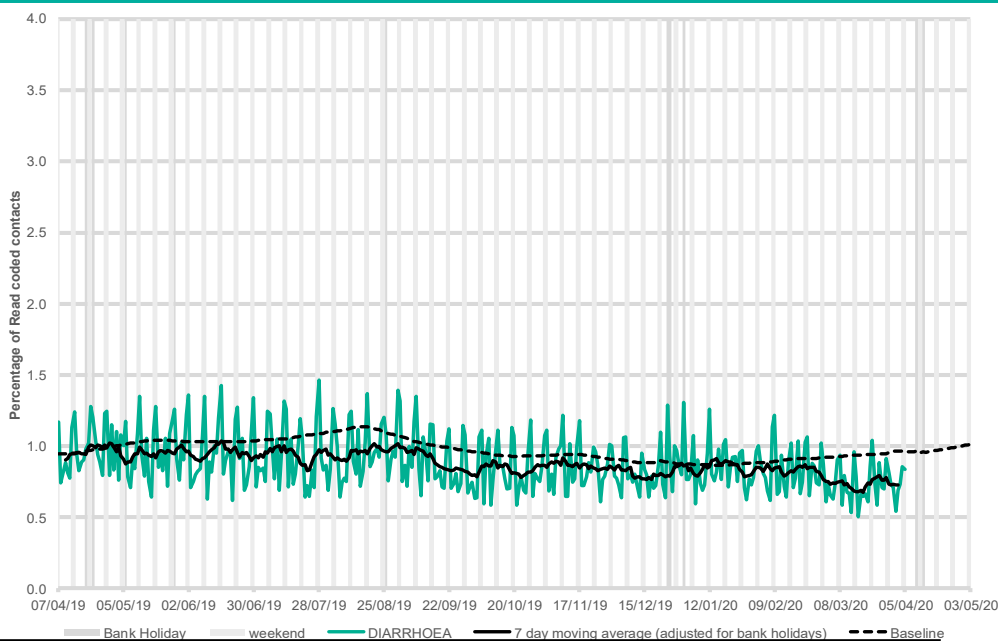
*7-day moving average adjusted for bank holidays.

08 April 2020

Year: 2020 Week: 14

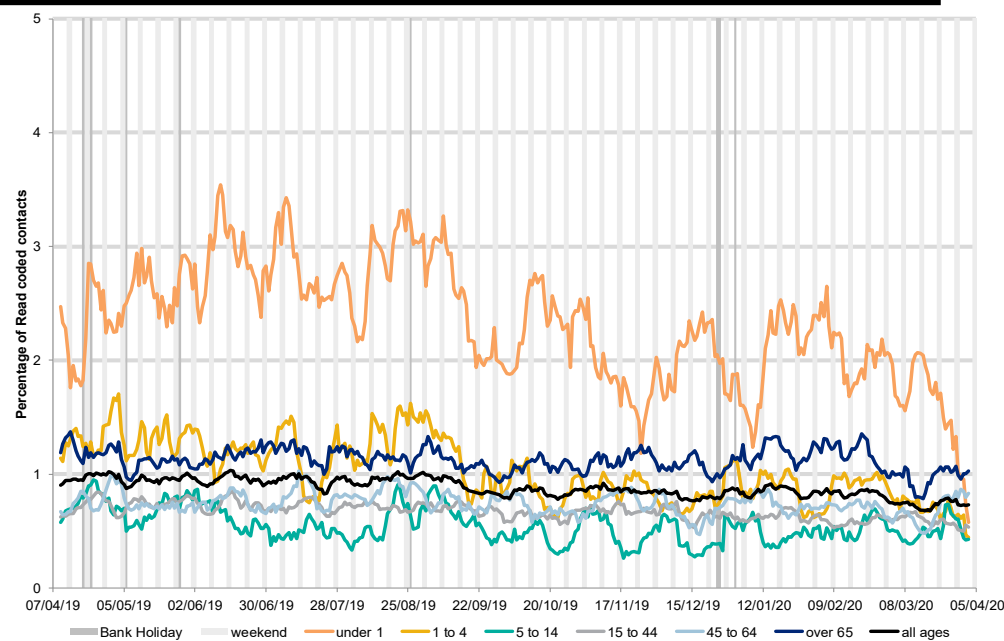
8: Diarrhoea daily contacts.

Shown as a percentage of the total contacts with a Read code and as a 7 day average*.



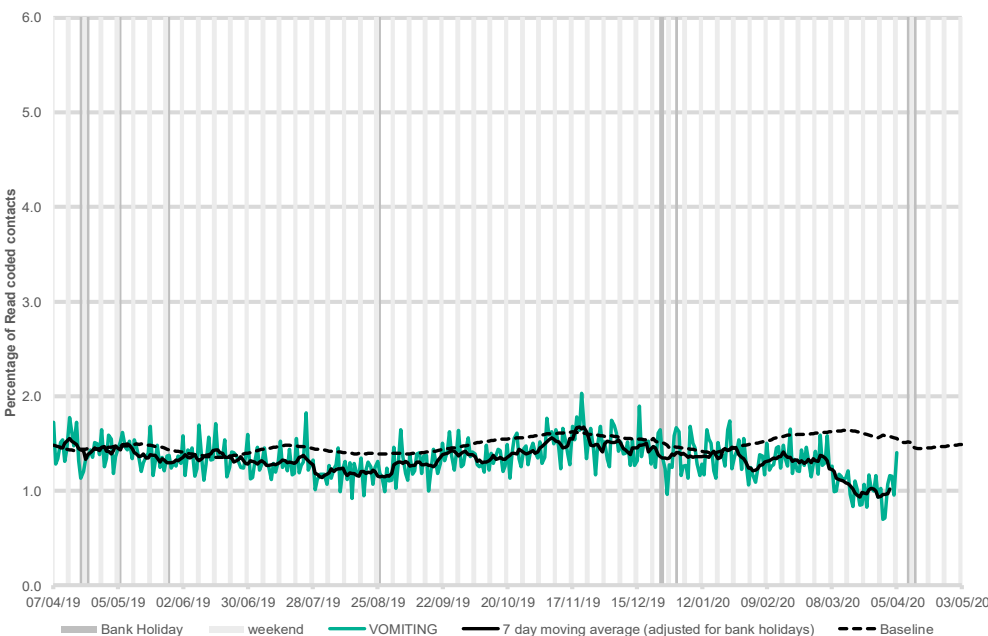
8a: Diarrhoea daily contacts by age group*.

As a percentage of total contacts within each age group, shown as a 7 day moving average adjusted for bank holidays.



9: Vomiting daily contacts.

Shown as a percentage of the total contacts with a Read code and as a 7 day average*.



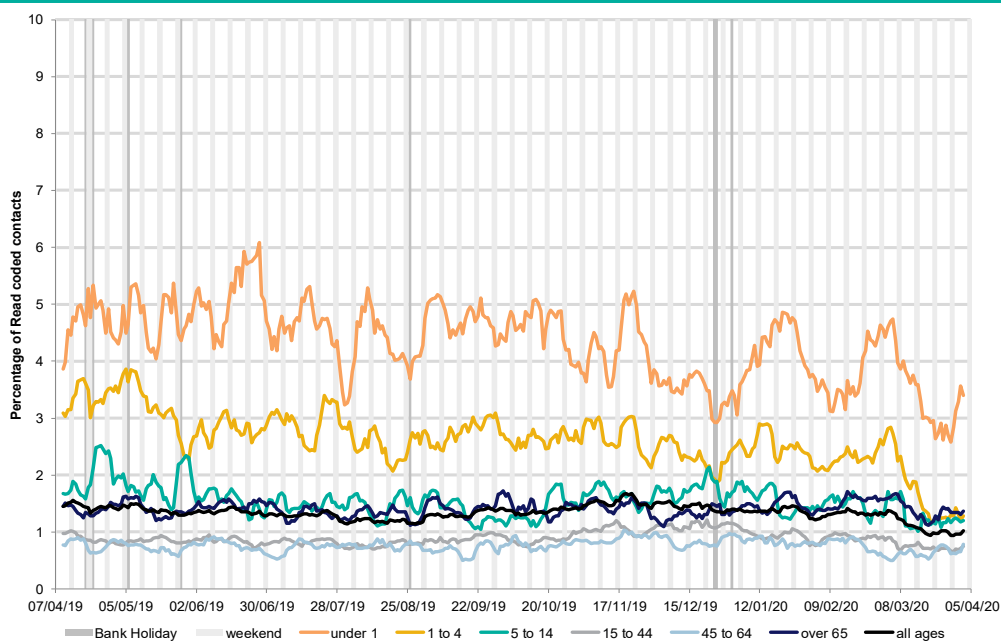
*7-day moving average adjusted for bank holidays.

08 April 2020

Year: 2020 Week: 14

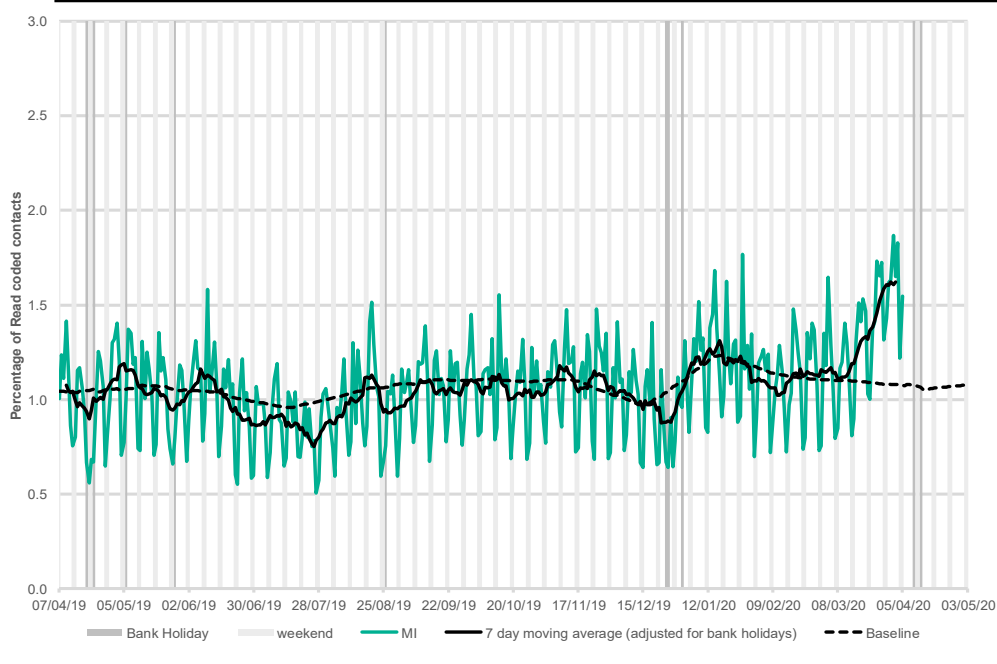
9a: Vomiting daily contacts by age group*.

As a percentage of total contacts within each age group, shown as a 7 day moving average adjusted for bank holidays.



10: Myocardial Infarction daily contacts.

Shown as a percentage of the total contacts with a Read code and as a 7 day average*.



Intentionally left blank.

*7-day moving average adjusted for bank holidays.

08 April 2020

Year: 2020 Week: 14

Notes and caveats:

- This bulletin presents data from the Public Health England (PHE) GP Out-of-hours\Unscheduled Care Surveillance System (GP OOHSS).
- Fully anonymised data from GP out-of-hours (OOH) and unscheduled care service providers in England are being transferred to the PHE for analysis and interpretation by the PHE Real-time Syndromic Surveillance Team (ReSST).
- This system supplements existing PHE syndromic surveillance systems by monitoring data on general practitioner consultations outside of routine surgery opening times (evenings, weekends and bank holidays) and unplanned contacts within NHS primary care.
- The key indicators presented within this bulletin are derived by grouping selected Read coded consultations.
- GP OOH consultation data are analysed on a daily basis to identify national and regional trends. A statistical algorithm underpins each system, routinely identifying activity that has increased significantly or is statistically significantly high for the time of year. Results from these daily analyses are assessed by the ReSST, along with analysis by age group, and anything deemed of public health importance is alerted by the team.
- Baselines represent seasonally expected levels of activity and are constructed from historical data since Nov 2009. They take into account any known substantial changes in data collection, population coverage or reporting practices. Gastroenteritis, diarrhoea and vomiting baselines also account for changes since the introduction of rotavirus vaccine in July 2013. Baselines are refreshed using the latest data on a regular basis.

Moving Epidemic Method (MEM):

- During winter we present Moving Epidemic Method (MEM) influenza thresholds on selected indicators.
 - The moving epidemic method or MEM is a standard methodology used for setting influenza thresholds across many European nations.¹
 - MEM is used for GP OOH ILI thresholds at a national level.
 - **MEM thresholds should be interpreted using 7 day moving averages rather than daily data.**
 - MEM thresholds currently use six years of historic data (2013-2019). The thresholds are re-calculated every year.
 - Baseline ('Pre-epidemic') thresholds are used alongside other surveillance systems to identify the start of influenza circulating in the community
 - 40%, 95% and 97.5% intensity thresholds are used to identify when influenza activity moves from low to medium, high or very high.
- ¹Vega T et al. Influenza Other Respir Viruses. 2013;7(4):546-58.

Further information:

The GP Out-of-Hours Surveillance System Bulletin can also be downloaded from the PHE Real-time Syndromic Surveillance website which also contains more information about syndromic surveillance:

<https://www.gov.uk/government/collections/syndromic-surveillance-systems-and-analyses>

Acknowledgements:

We are grateful to Advanced and the GP OOH and unscheduled care service providers who have kindly agreed to participate in this system.

PHE Out-of-Hours/Unscheduled Care Surveillance

Contact ReSST:
syndromic_surveillance@phe.gov.uk

Produced by: PHE Real-time Syndromic Surveillance Team
1st Floor, 5 St Philips Place, Birmingham, B3 2PW
Tel: 0344 225 3560 > Option 4 > Option 2 **Fax:** 0121 236 2215
Web: <https://www.gov.uk/government/collections/syndromic-surveillance-systems-and-analyses>