



01 April 2020

Year: 2020 Week: 13

In This Issue:

- Key messages.
- Diagnostic indicators at a glance.
- Weekly report statistics.
- Total attendances.
- Respiratory.
- Gastrointestinal.
- Cardiac.
- Notes and caveats.
- Acknowledgements.

Key messages

Data to: 29 March 2020

Please note that the presentation of data in this report has been updated to account for recent changes in attendance denominators. Data for syndromic indicators are now presented as numbers of attendances and we are currently unable to present indicators by age.

During week 13 there was a further decrease in the total number of ED attendances (figure 1), however the number of pneumonia attendances increased (figure 8).

A Cold Watch System operates in England from 1 November to 31 March each year. As part of the Public Health England Cold Weather Plan for England the PHE Real-time Syndromic Surveillance Team will be monitoring the impact of cold weather on syndromic surveillance data during this period.

Cold weather alert level (current reporting week): **Level 1: Winter preparedness**
<http://www.metoffice.gov.uk/weather/uk/coldweatheralert/>

Diagnostic indicators at a glance:

Further details on the syndromic indicators reported can be found on page 9.

Indicator	Current trend	Level
Respiratory	decreasing	similar
Acute Respiratory Infection	decreasing	similar
Bronchiolitis	decreasing	similar
Influenza-like Illness	decreasing	similar
Pneumonia	increasing	above
Asthma	decreasing	below
Gastrointestinal	decreasing	below
Gastroenteritis	decreasing	below
Cardiac	decreasing	below
Myocardial Ischaemia	decreasing	below

EDSSS weekly report statistics

Only Type 1 EDs meeting the weekly reporting criteria are included (see page 6 for details).

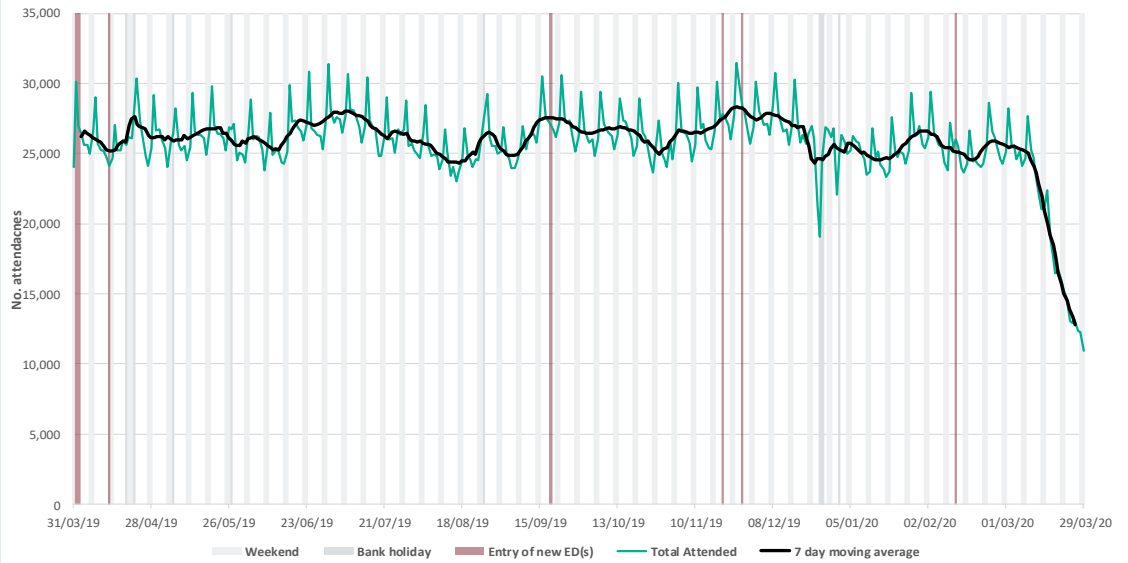
*max EDs included across full time period reported in charts, individual days may include fewer EDs.

Date	Total Attendances	Diagnoses Coded Number	%	Type 1 EDs Included
23/03/2020	14,746	10,381	70.4%	106
24/03/2020	13,104	9,336	71.2%	106
25/03/2020	12,943	9,207	71.1%	104
26/03/2020	13,162	9,247	70.3%	106
27/03/2020	12,371	8,583	69.4%	103
28/03/2020	12,283	8,669	70.6%	102
29/03/2020	10,975	7,518	68.5%	98
Total	89,584	62,941	70.3%	(max)* 106

1: Total attendances.

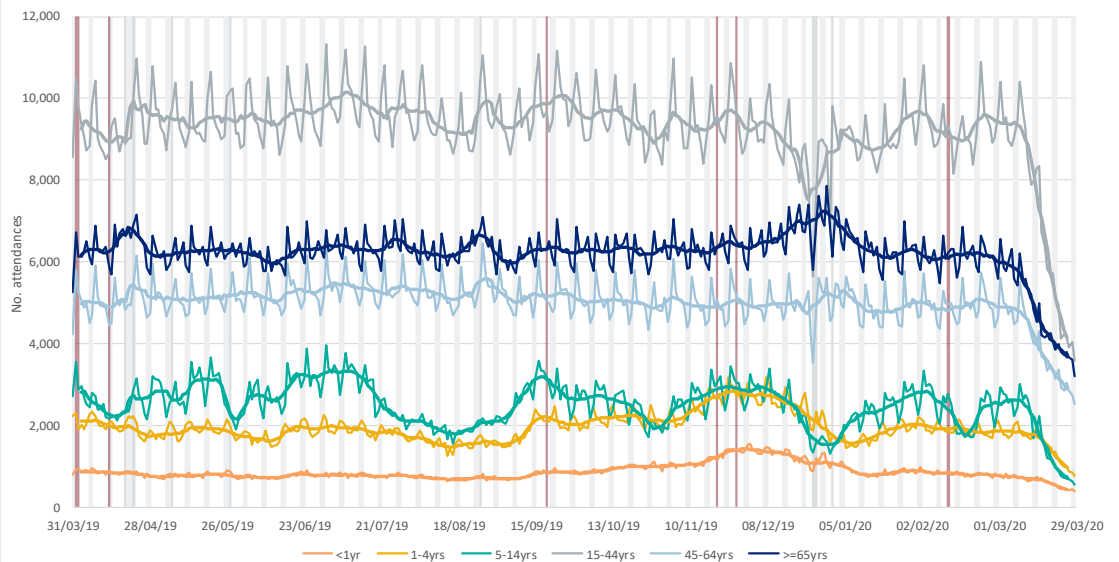
Daily number of total attendances recorded, across the EDSSS network.

The entry of new ED(s) is marked by a vertical red line (see page 6 for inclusion criteria).



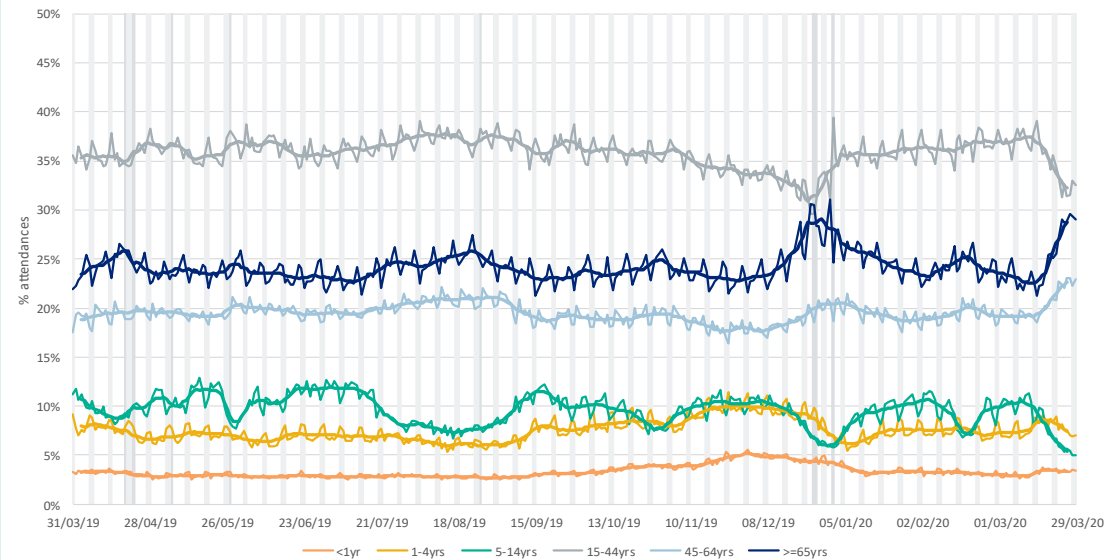
2: Daily attendances by age: Numbers.

Daily number of total attendances, by age group, recorded across the EDSSS network.



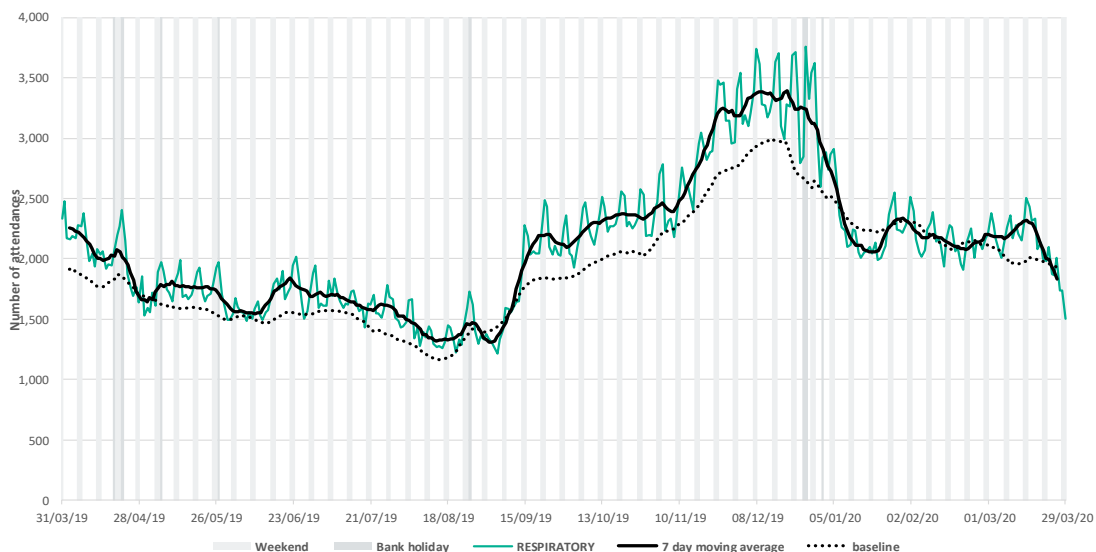
3: Daily attendances by age: Percentages

Daily percentage of total attendances by age group, recorded across the EDSSS network.



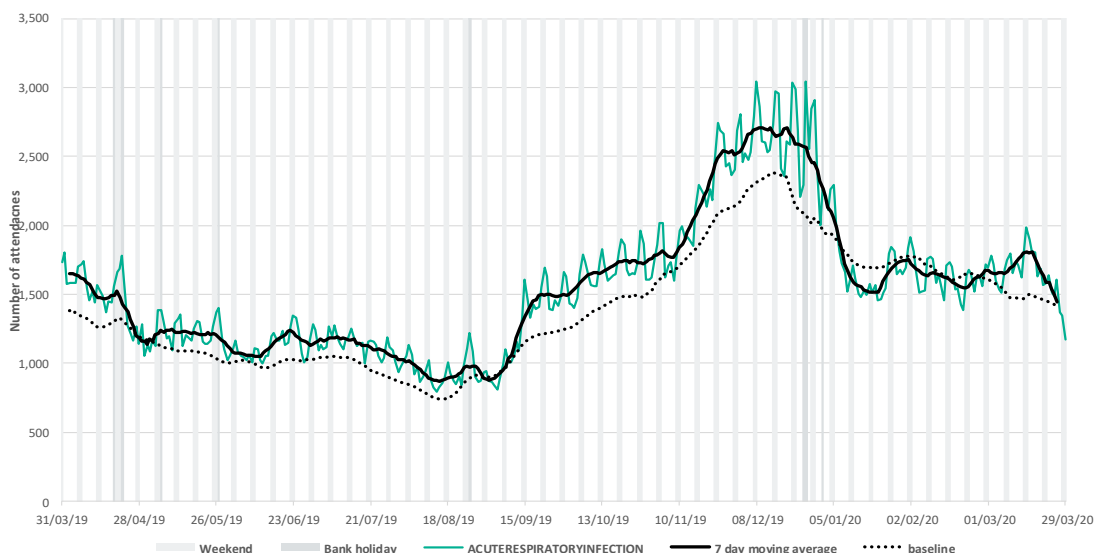
4: Respiratory.

Daily number of attendances recorded as respiratory attendances across the EDSSS network.



5: Acute Respiratory Infection.

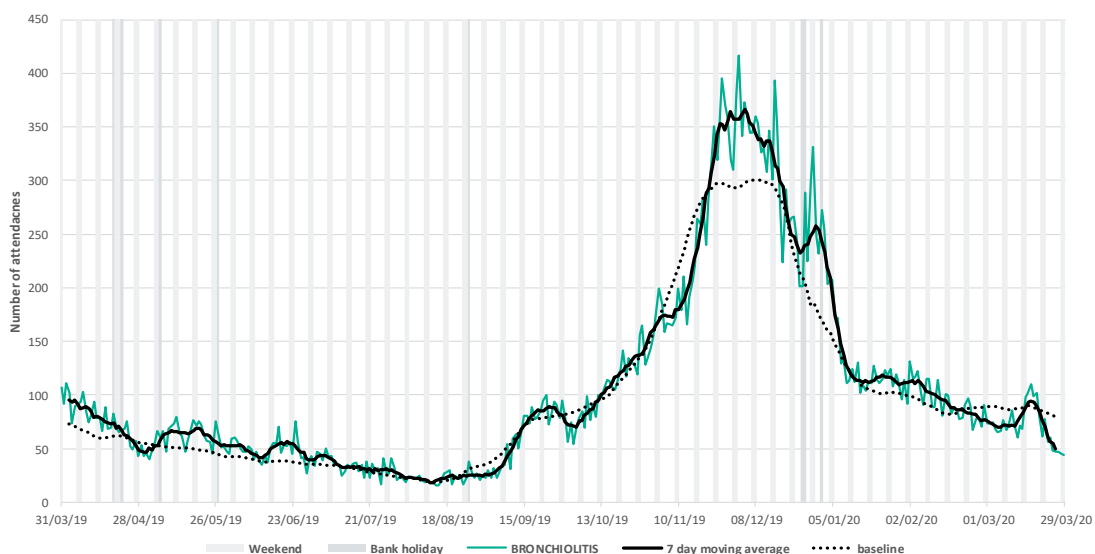
Daily percentage of all attendances recorded as acute respiratory infection attendances across the EDSSS network.



5a: Acute Respiratory Infection by age group.

**6: Bronchiolitis/
bronchitis.**

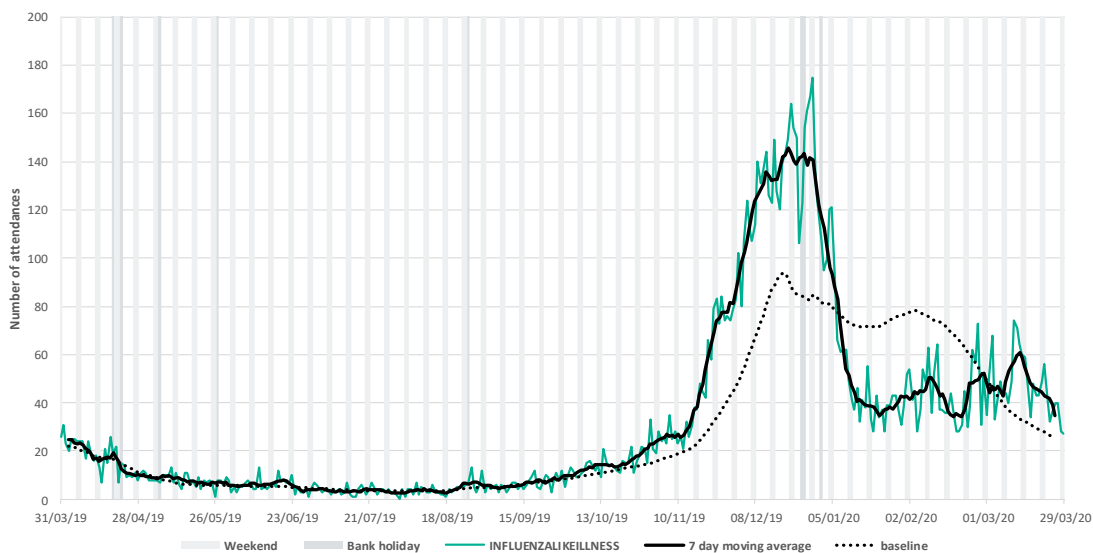
Daily number of attendances recorded as bronchiolitis/ acute bronchitis attendances across the EDSSS network.



6a: Intentionally left blank

**7: Influenza-like
illness.**

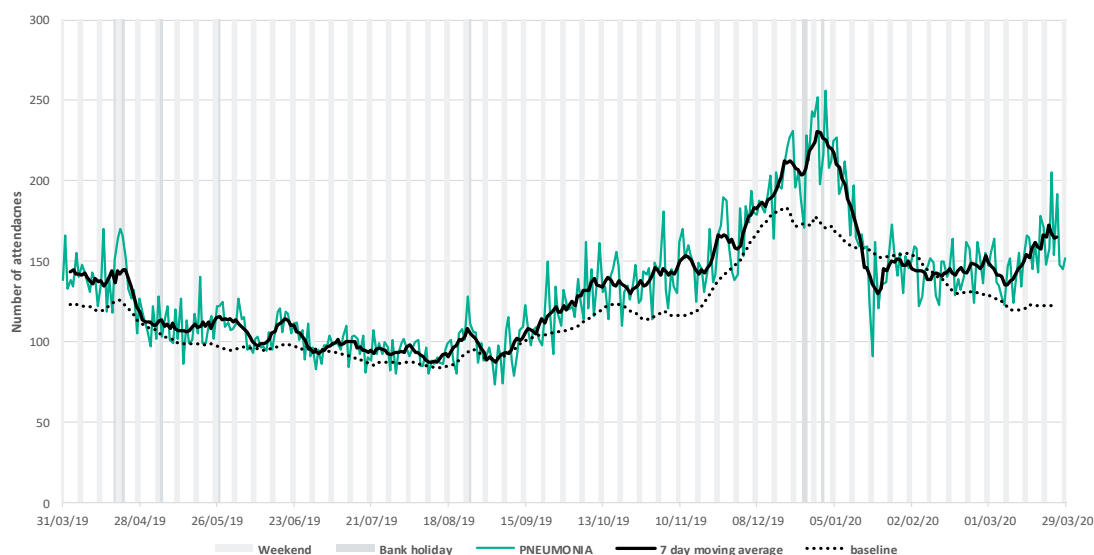
Daily number of attendances recorded as influenza-like illness attendances across the EDSSS network.



7a: Intentionally left blank

8: Pneumonia.

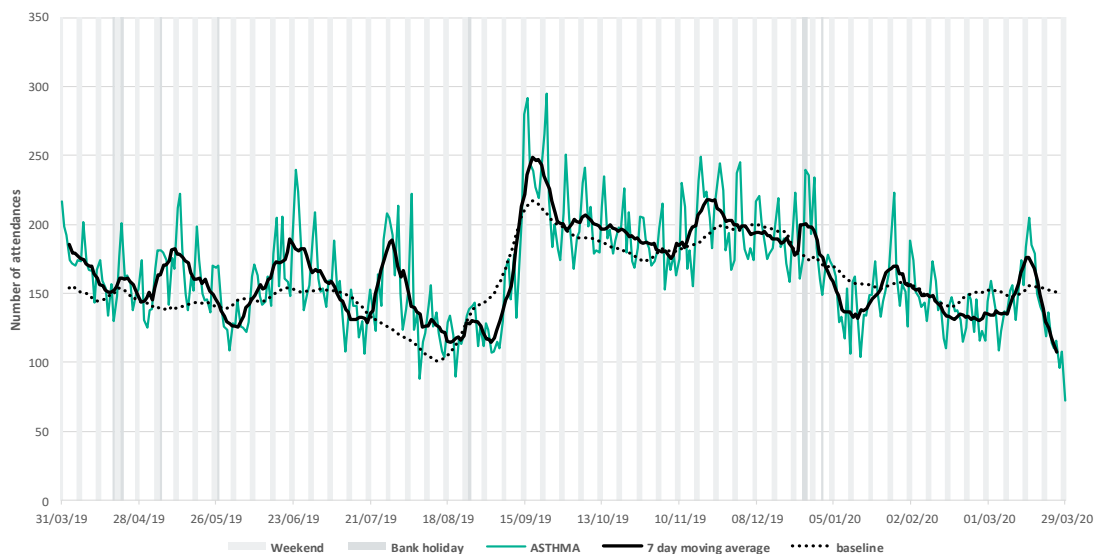
Daily number of attendances recorded as pneumonia attendances across the EDSSS network.



8a: Intentionally left blank

9: Asthma.

Daily number of attendances recorded as asthma/wheeze/difficulty breathing attendances across the EDSSS network.

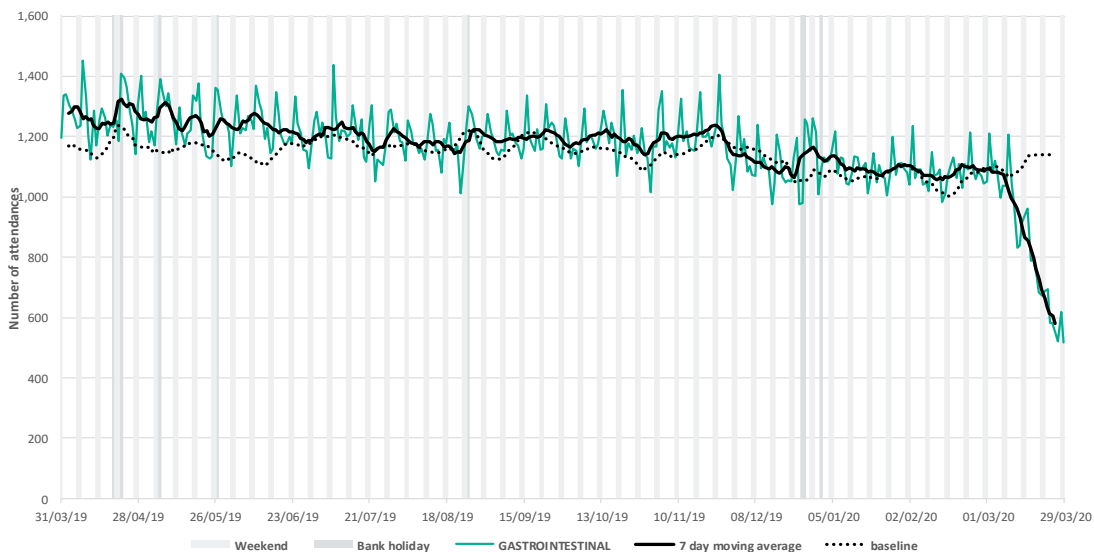


9a: Intentionally left blank

Intentionally left blank

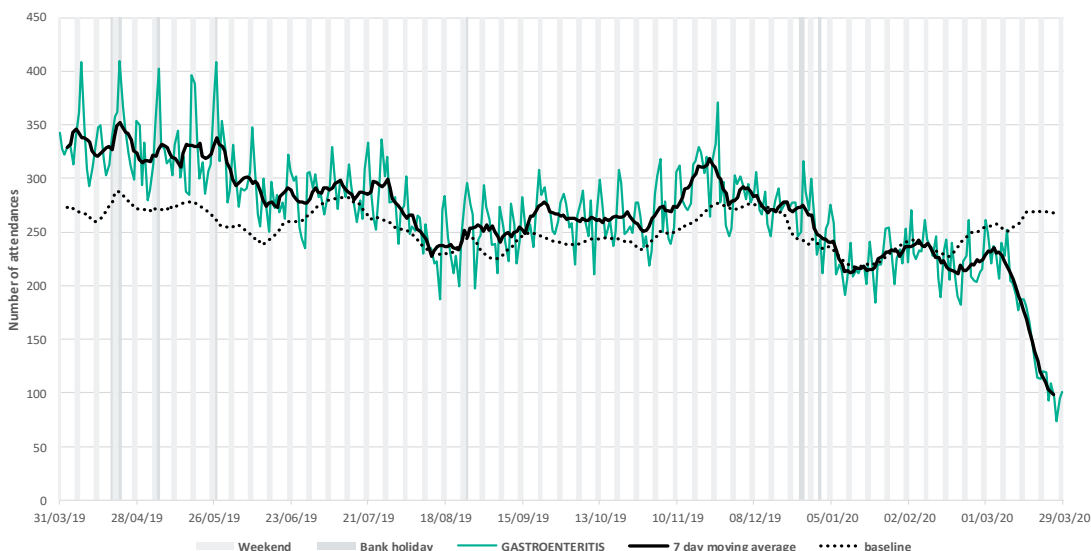
10: Gastrointestinal.

Daily number of attendances recorded as gastrointestinal across the EDSSS network.



11: Gastroenteritis

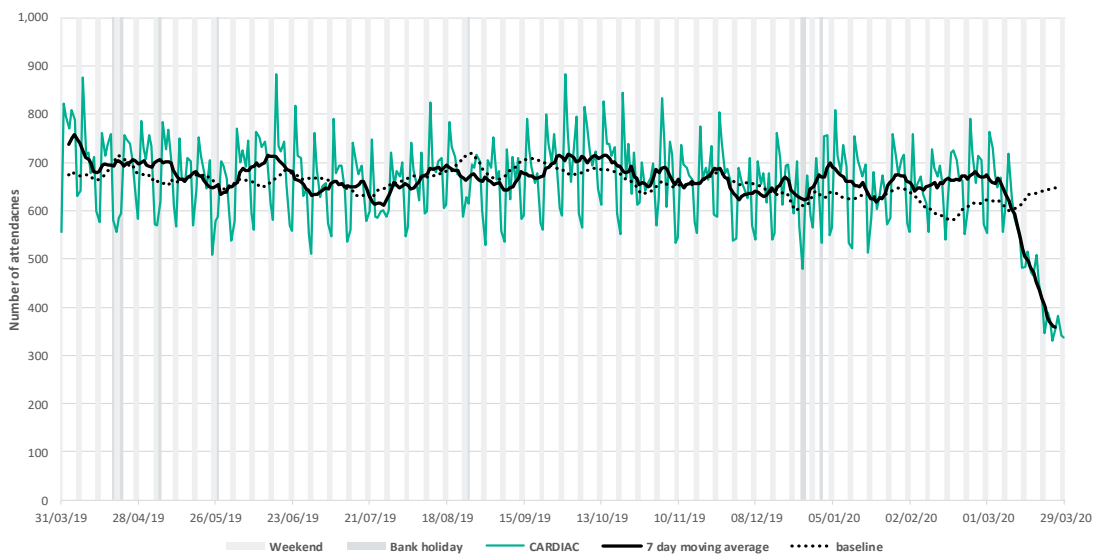
Daily number of attendances recorded as gastroenteritis across the EDSSS network.



11a: Intentionally left blank

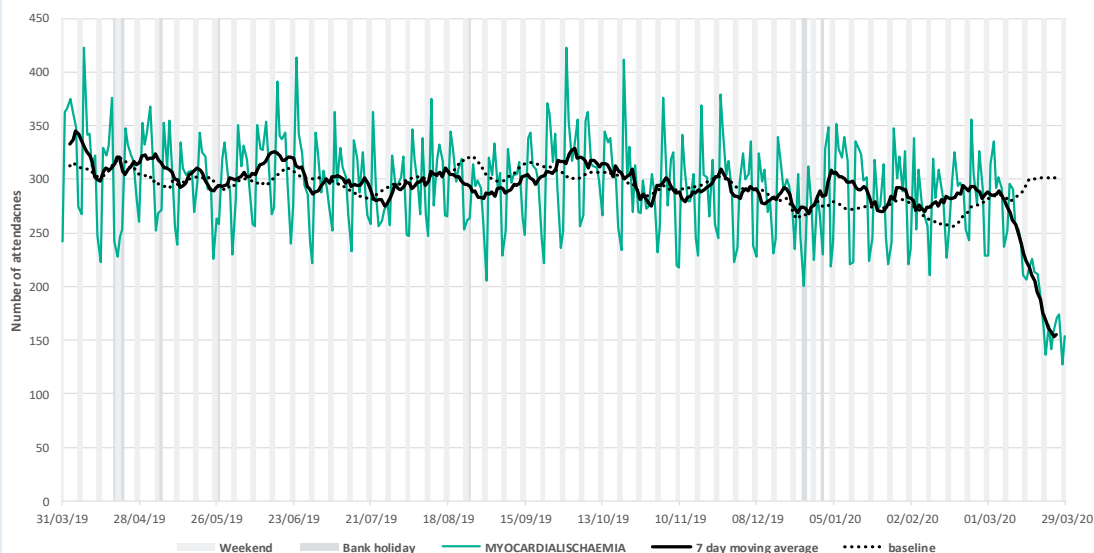
12: Cardiac.

Daily number of attendances recorded as cardiac attendances across the EDSSS network.



13: Myocardial Ischaemia.

Daily number of attendances recorded as myocardial ischaemia attendances across the EDSSS network.



Notes and caveats:

- ▶ **National EDSSS** began operating in April 2018
- ▶ Following the introduction of the Emergency Care Data Set (ECDS) the national reporting of secondary care activity data through the commissioning data sets mechanism from EDs to NHS Digital became a daily feed:
<https://www.england.nhs.uk/ourwork/tsd/ec-data-set/>
- ▶ EDSSS receives an automated daily transfer of anonymised ED data from NHS Digital
- ▶ The number of EDs reporting through ECDS continues to increase
- ▶ Not all EDs currently provide data through ECDS on a daily basis
- ▶ EDs are eligible for inclusion in this report only where the **weekly EDSSS reporting criteria** have been met during the surveillance week reported:
 - Data relates to attendances at a type 1 ED
 - Data for 4 of the 7 days was received by PHE
 - Data for those days was received within 2 calendar days of the patient arrival
- ▶ Where an ED meets these criteria, all data received from that ED previous to the current surveillance week is included.
- ▶ EDs eligible for inclusion is likely to change each week, which will in turn affect the historical data inclusion
- ▶ Individual EDs will not be identified in syndromic surveillance reporting in these bulletins

- ▶ All EDs report diagnoses to EDSSS using SnomedCT codes. Where Snomed codes are not used the ED is excluded from indicator analysis
- ▶ The syndromic indicators presented in this bulletin are based on the SnomedCT diagnosis codes reported by EDs:
 - Respiratory:** All respiratory diseases and conditions (infectious and non infectious).
 - Acute Respiratory Infections (ARI):** All acute infectious respiratory diseases.
 - Asthma:** As indicated by title.
 - Bronchiolitis/ bronchitis:** As indicated by title (excluding 'chronic').
 - Influenza-like Illness (ILI):** As indicated by title.
 - Pneumonia:** As indicated by title.
 - Gastrointestinal:** All gastrointestinal diseases and conditions (infectious and non infectious).
 - Gastroenteritis:** All infectious gastrointestinal diseases.
 - Cardiac:** All cardiac conditions.
 - Myocardial Ischaemia:** All ischaemic heart disease.

- ▶ Baselines represent seasonally expected levels of activity and are constructed from historical data since July 2010. They take into account the change from sentinel EDSSS to National EDSSS and current coverage. Gastroenteritis, diarrhoea and vomiting baselines also account for changes since the introduction of rotavirus vaccine in July 2013. Baselines are refreshed using the latest data on a regular basis.
- ▶ **Sentinel EDSSS** 2010 to March 2018, collected data through a bespoke, voluntary network of EDs across England and Northern Ireland
- ▶ **Sentinel EDSSS** reports be found in bulletins up to and including week 13 2018:
<https://www.gov.uk/government/collections/syndromic-surveillance-systems-and-analyses>

Acknowledgements:

We are grateful to the clinicians in each ED and other staff within each Trust for their continued involvement in the EDSSS.

We thank the Royal College of Emergency Medicine, NHS Digital and NHS England for their support in the development of national EDSSS, using anonymised data collection from ECDS.

Emergency Department Syndromic Surveillance System Bulletin.

Produced by: PHE Real-time Syndromic Surveillance Team
1st Floor, 5 St Philips Place, Birmingham, B3 2PW

Tel: 0344 225 3560 > Option 4 > Option 2 **Email:** syndromic.surveillance@phe.gov.uk

Web: <https://www.gov.uk/government/collections/syndromic-surveillance-systems-and-analyses>