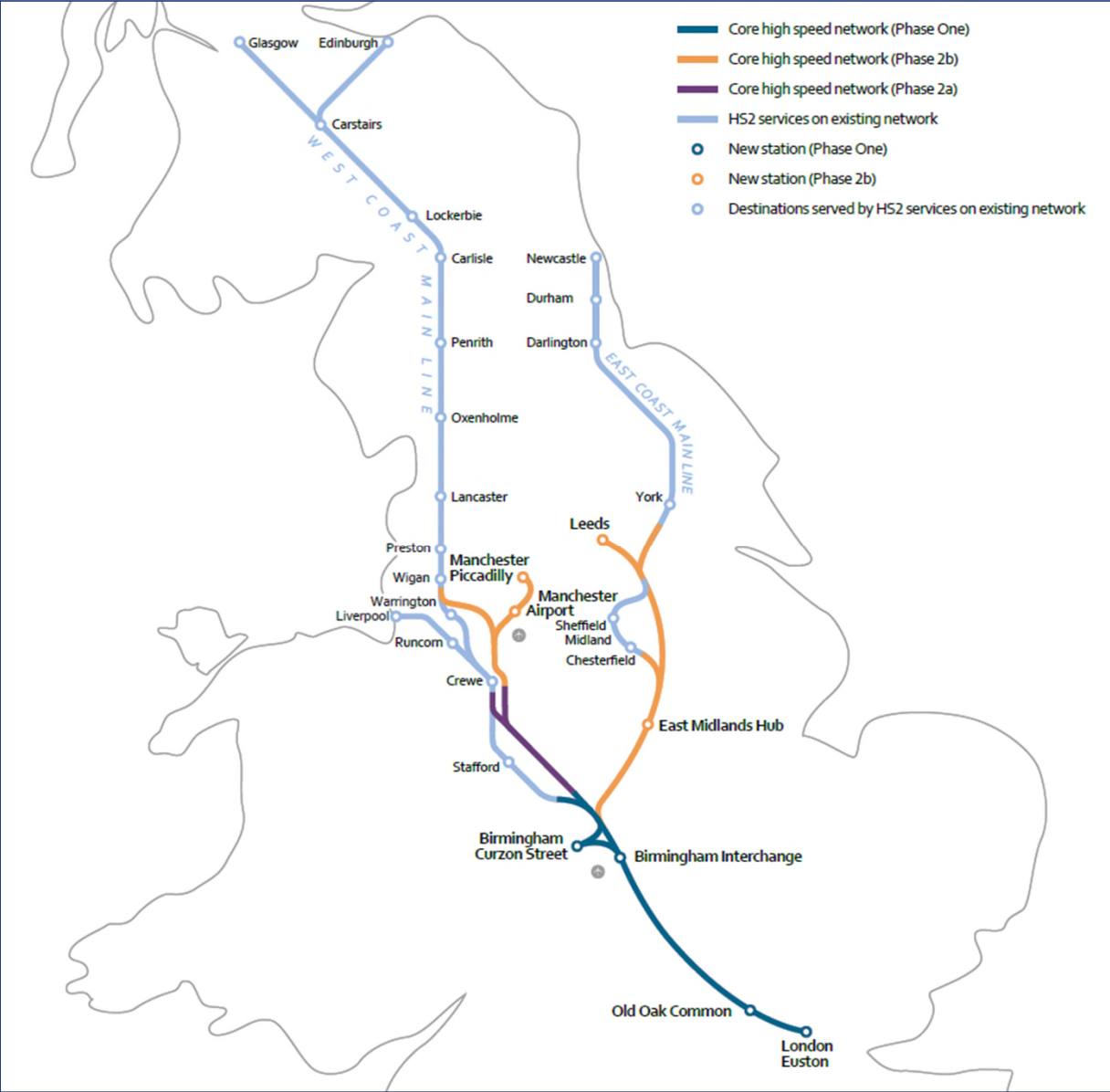


HS2

Phase 2a - Opening Statement

James Strachan QC

The HS2 network



Fastest typical journey times

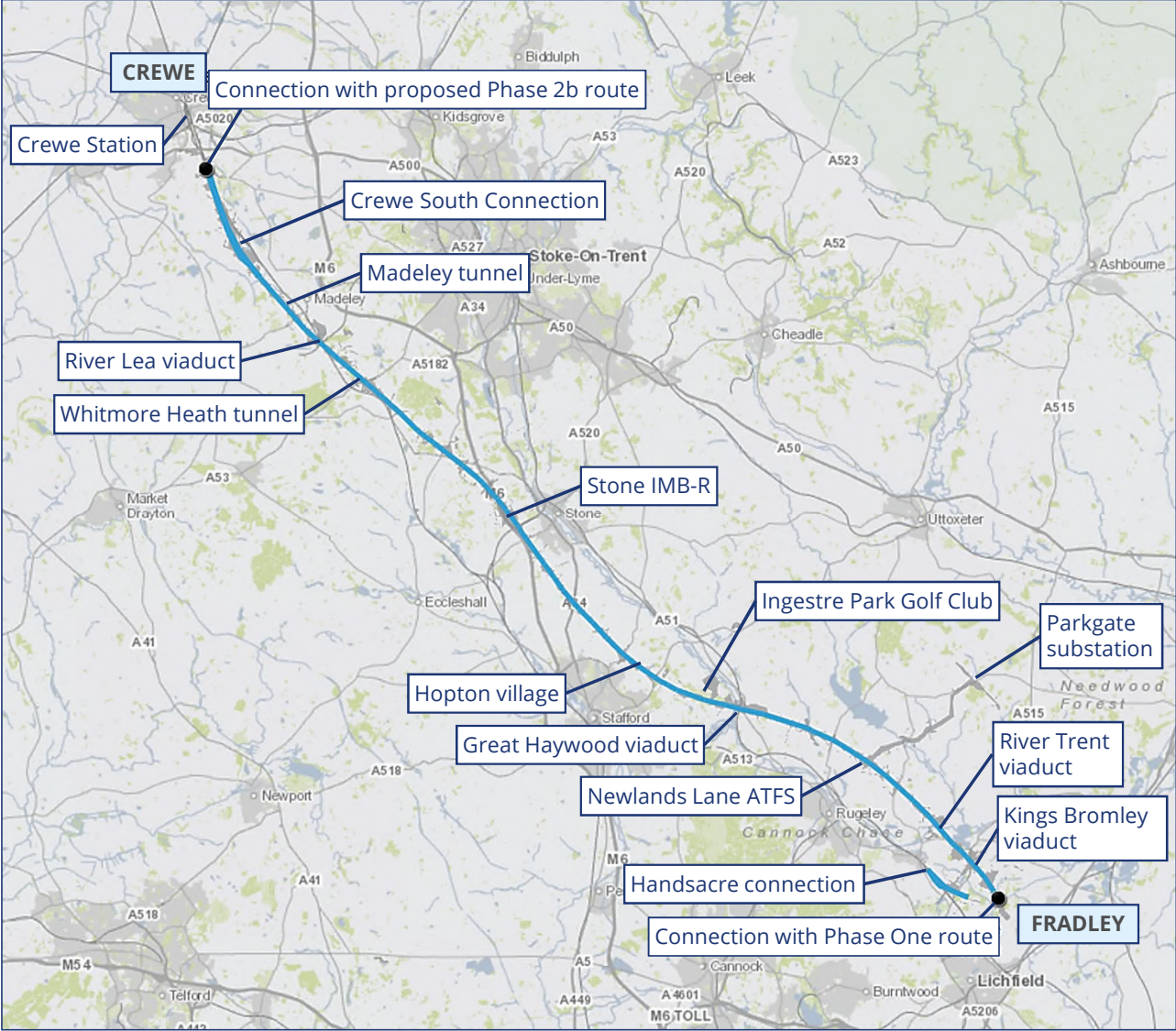
Fastest typical journey times between key destinations 'without' and 'with' the Proposed Scheme in operation (Phase One and Phase 2a)

Origin - Destination	Journey time		
	Without HS2 (i.e. current)	With HS2 Phase One	With HS2 Phase One and the Proposed Scheme
London Euston – Crewe	1 hour 30 minutes	1 hour 8 minutes	55 minutes
London Euston – Manchester Piccadilly	2 hours 7 minutes	1 hour 41 minutes	1 hour 30 minutes
London Euston – Preston	2 hours 8 minutes	1 hour 41 minutes	1 hour 30 minutes
London Euston – Liverpool Lime Street	2 hours 14 minutes	1 hour 46 minutes	1 hour 34 minutes
London Euston – Glasgow Central	4 hours 31 minutes (and one fast train per day: 4 hours and 5 minutes)	3 hours 56 minutes	3 hours 45 minutes

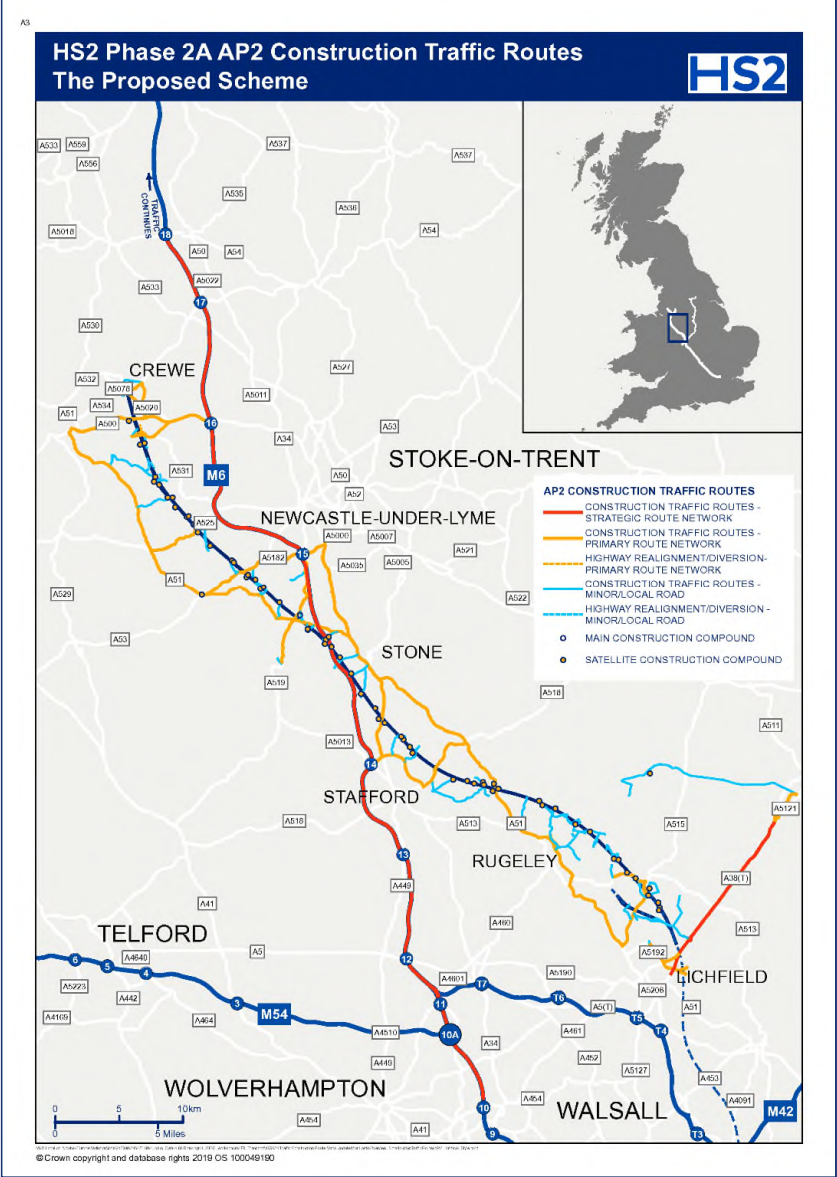
Proposed scheme



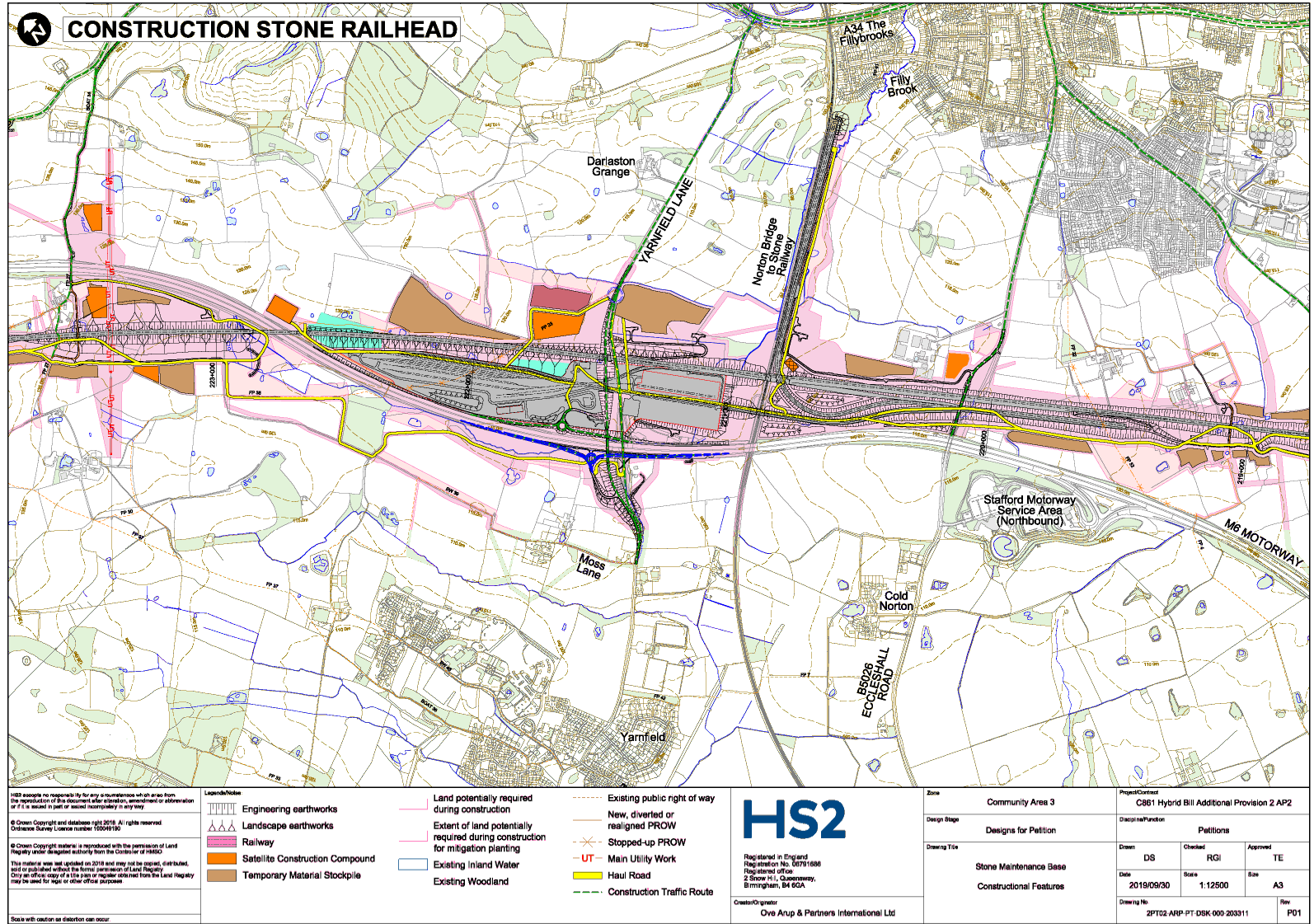
Key features



Construction traffic routes



Stone Railhead (CT-05)



Borrow Pits

- Phase 2a Route
- 1 King's Bromley South
- 2 King's Bromley North (A515)
- 3 King's Bromley North (Shaw Lane)
- 4 Blithbury
- 5 West of Netherset Hey Farmhouse
- 6 North of Checkley Lane



HS2

HS2 Assurance No.8 to NFU

Borrow Pit Review - Final

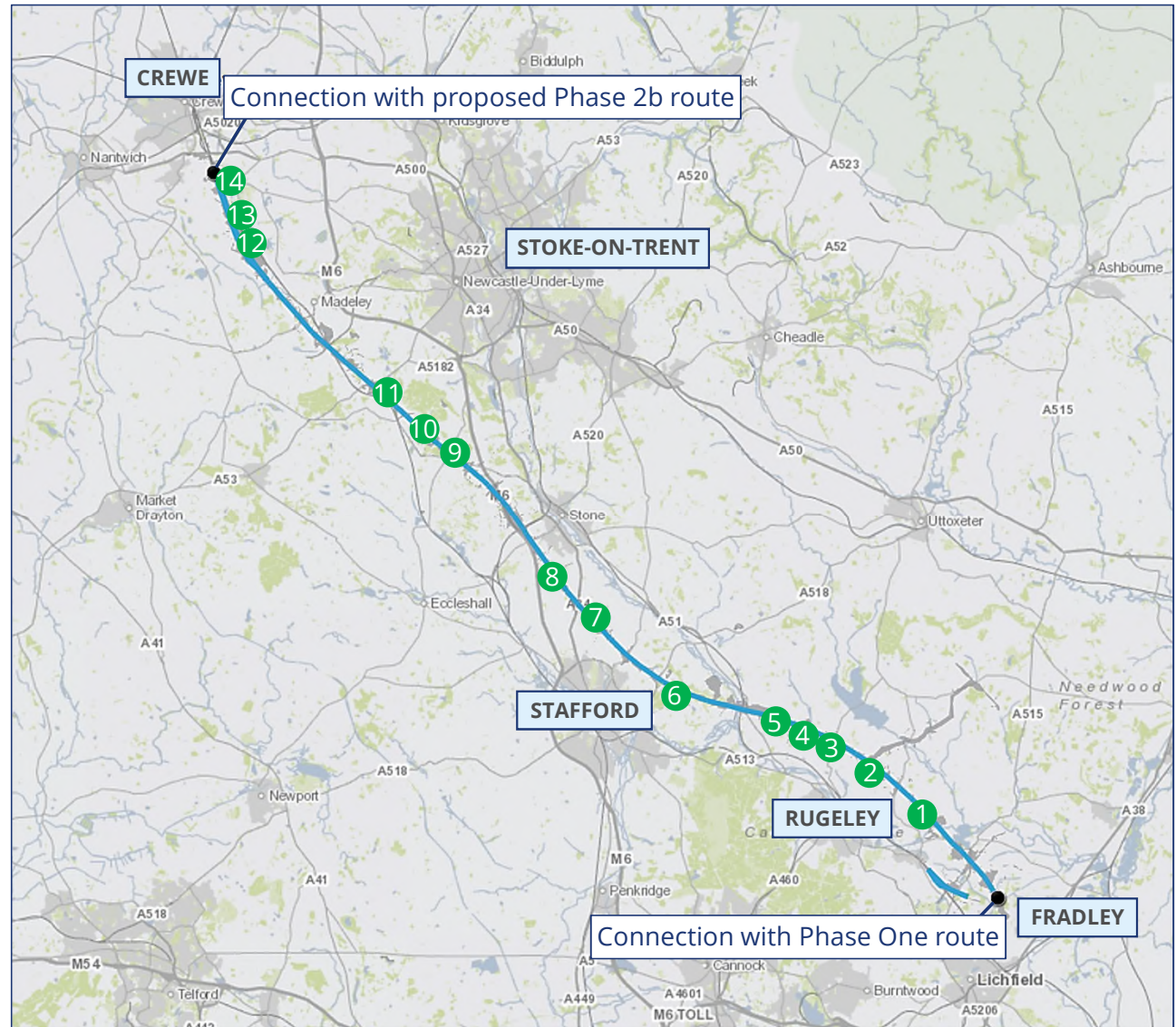
April 2019

OFFICIAL

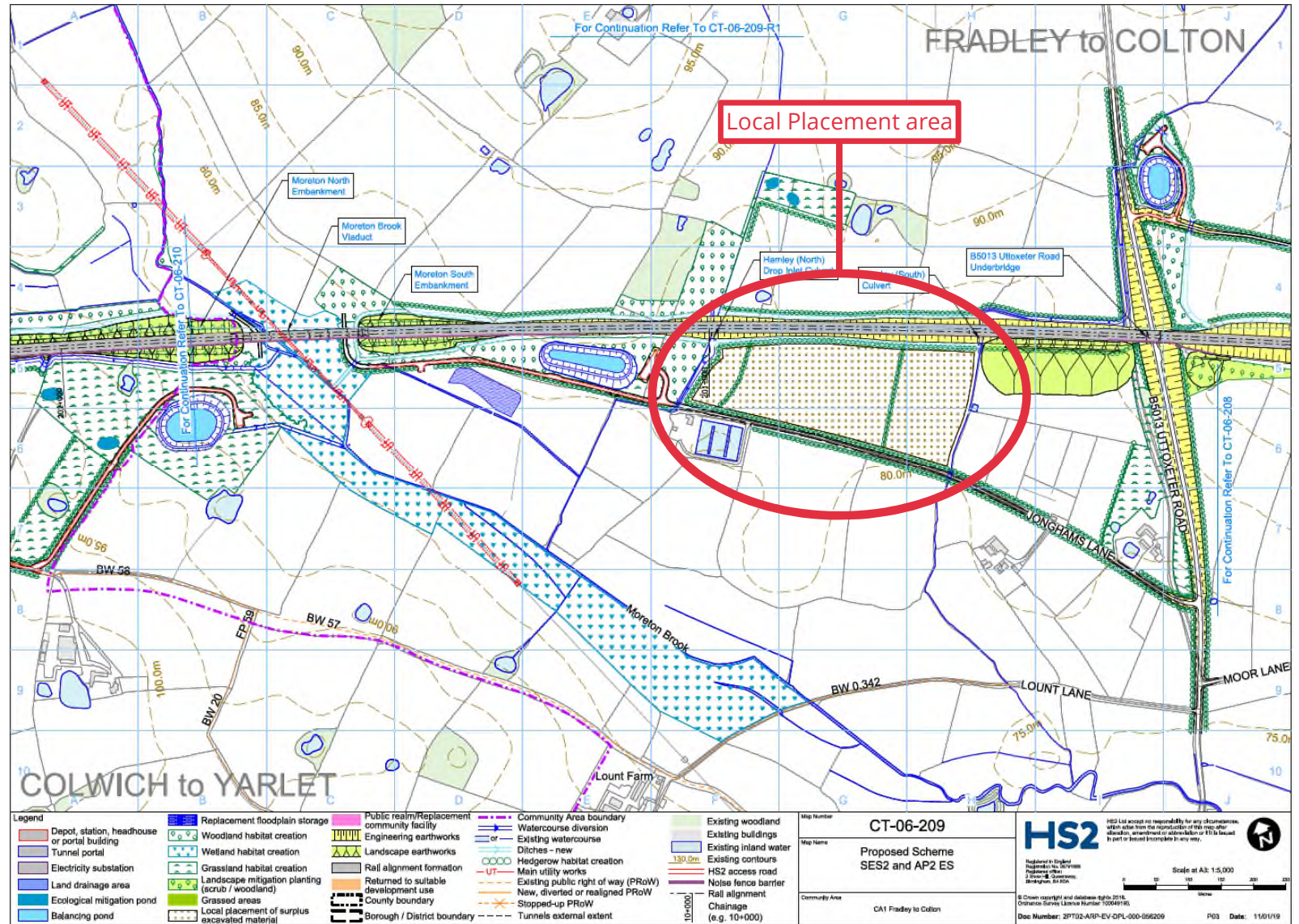
Local Placement areas

— Phase 2a Route

- 1 South of Pipeware embankment
- 2 South East of Newlands Lane ATFS
- 3 South of Moreton South embankment
- 4 South of Moreton cutting
- 5 North of Moreton cutting
- 6 South of Brancote North cutting
- 7 North of Marston North embankment
- 8 South of Yarlet embankment
- 9 North of Swynnerton North cutting
- 10 North and South of Hatton South cuttings
- 11 North of Whitmore South cutting
- 12 South West of Blakehall cutting
- 13 North and South of Chorlton Footpath 3
- 14 East of Casey Lane diversion



Local Placement area south of Moreton South embankment



HS2

High Speed Two Phase 2a

Guide for Farmers and Growers

July 2019

© HS2 Ltd
CS1173

www.hs2.org.uk

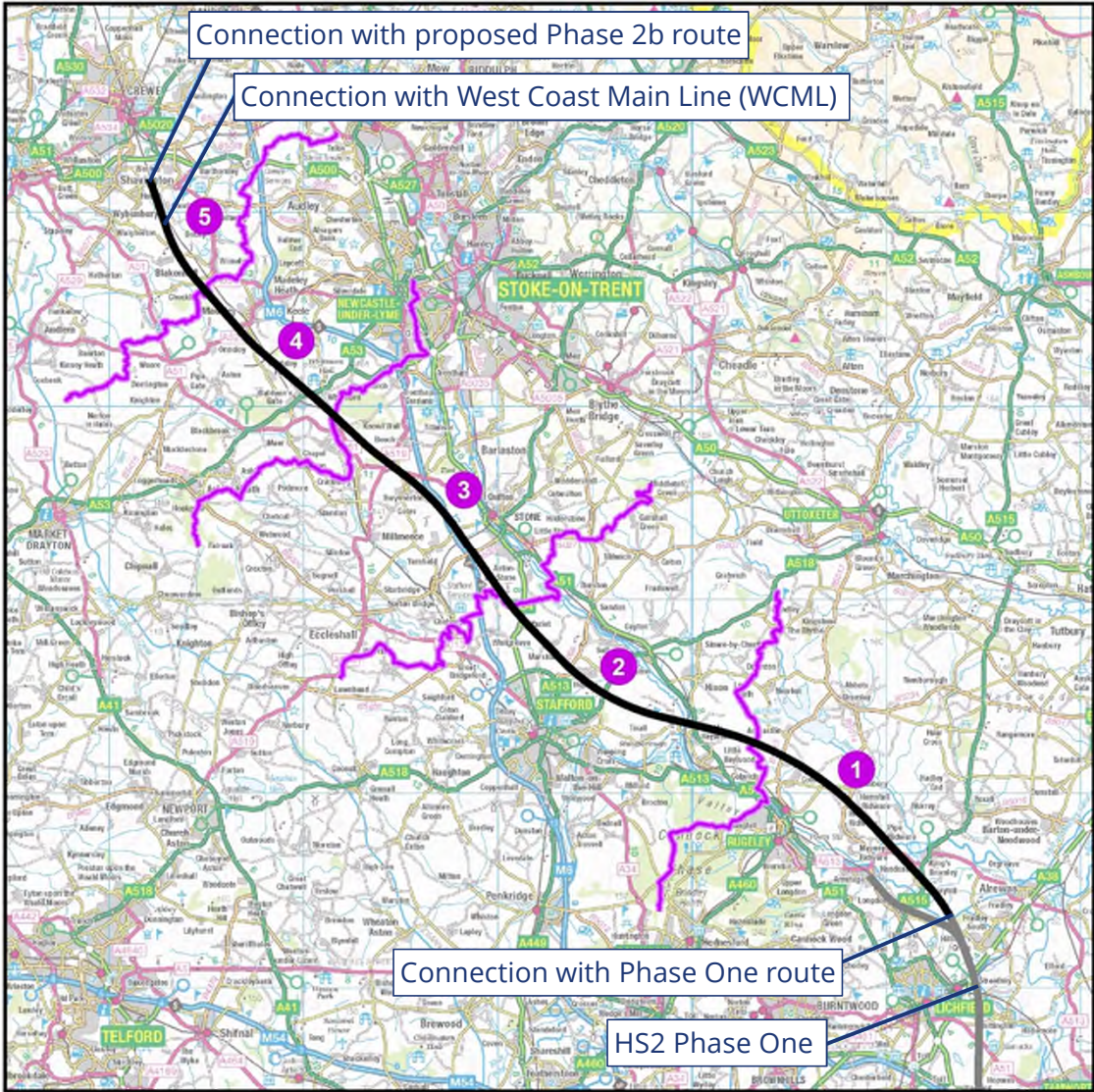
Extract from Guide for Farmers and Growers

Paragraph 2.1.5

- 2.1.5 In addition, the Secretary of State has agreed with the National Farmers' Union (NFU), and the Country Land and Business Association (CLA) that, prior to the completion of the detailed design process, the nominated undertaker will be required to consult the owner/tenant of an agricultural holding regarding the detailed design of works proposed to be undertaken on any part of that holding. The nominated undertaker will be required to have regard to those responses, and as far as reasonably practicable (having regard to all other relevant factors):
- seek to minimise the loss of Grade 1, 2 and 3a agricultural land; and
 - through engagement, seek to accommodate reasonable proposals to modify the detailed design of the works for the purposes of facilitating the efficient management of the agricultural holding in question, following completion of construction of the Phase 2a works and in so far as reasonably practicable.

Phase 2a Community Areas

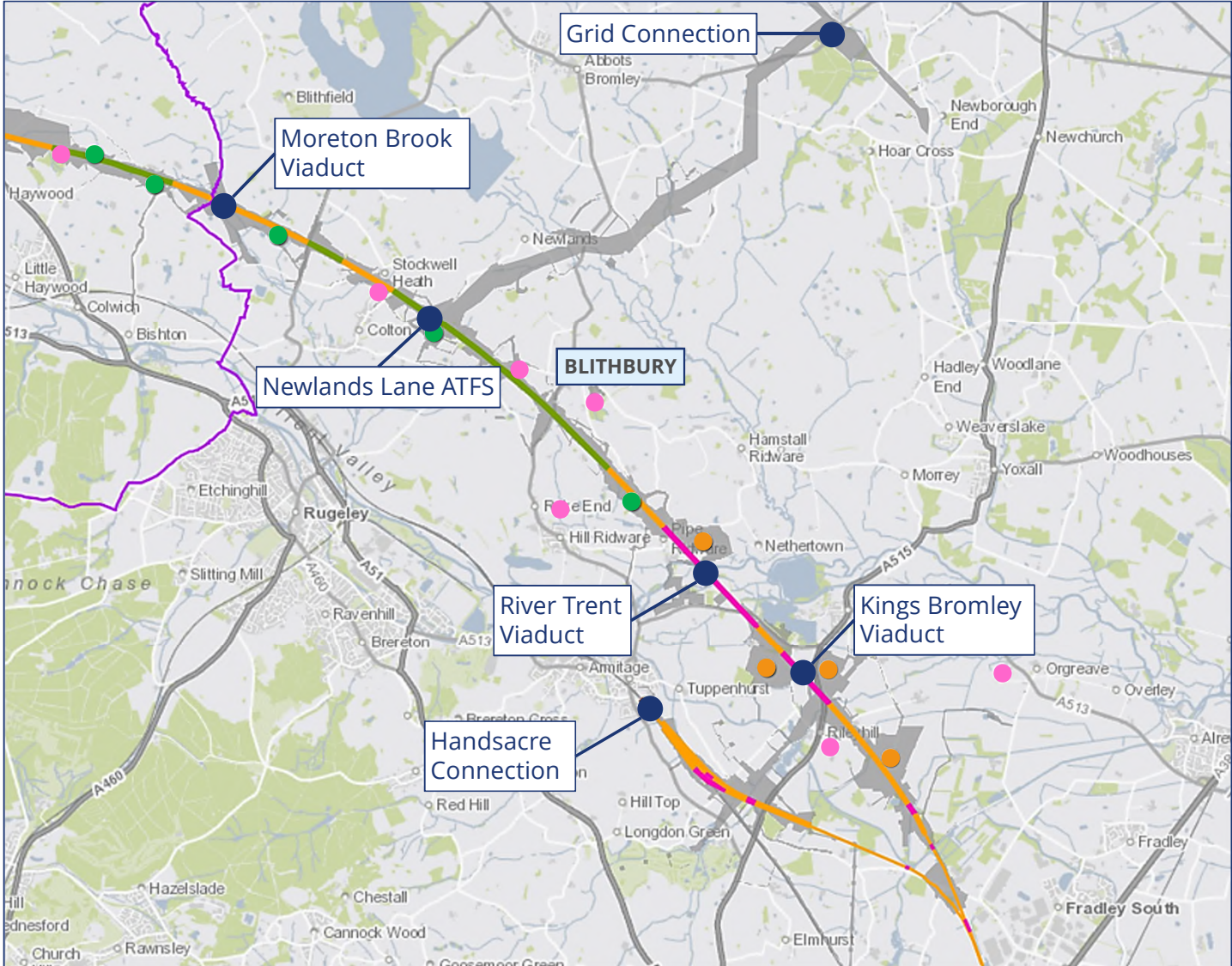
- 1 Fradley to Colton
- 2 Colwich to Yarlet
- 3 Stone and Swynnerton
- 4 Whitmore Heath to Madeley
- 5 South Cheshire



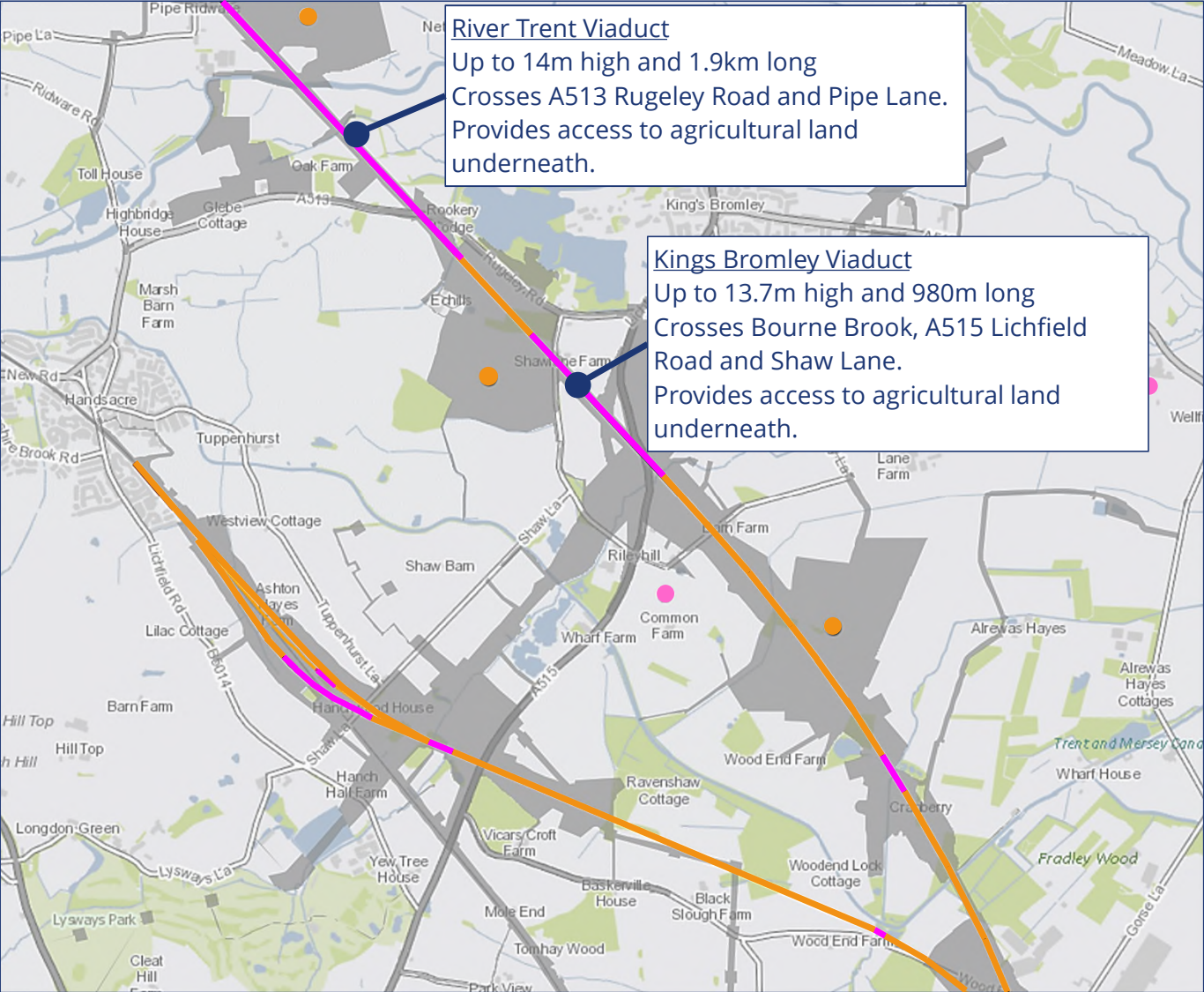
Fradley to Colton (CA1)



- Cutting
- Embankment
- Viaduct
- Community Area Boundary
- Local Placement
- Borrow Pits
- Petition Locations (Individual)
- Hybrid Bill Limits



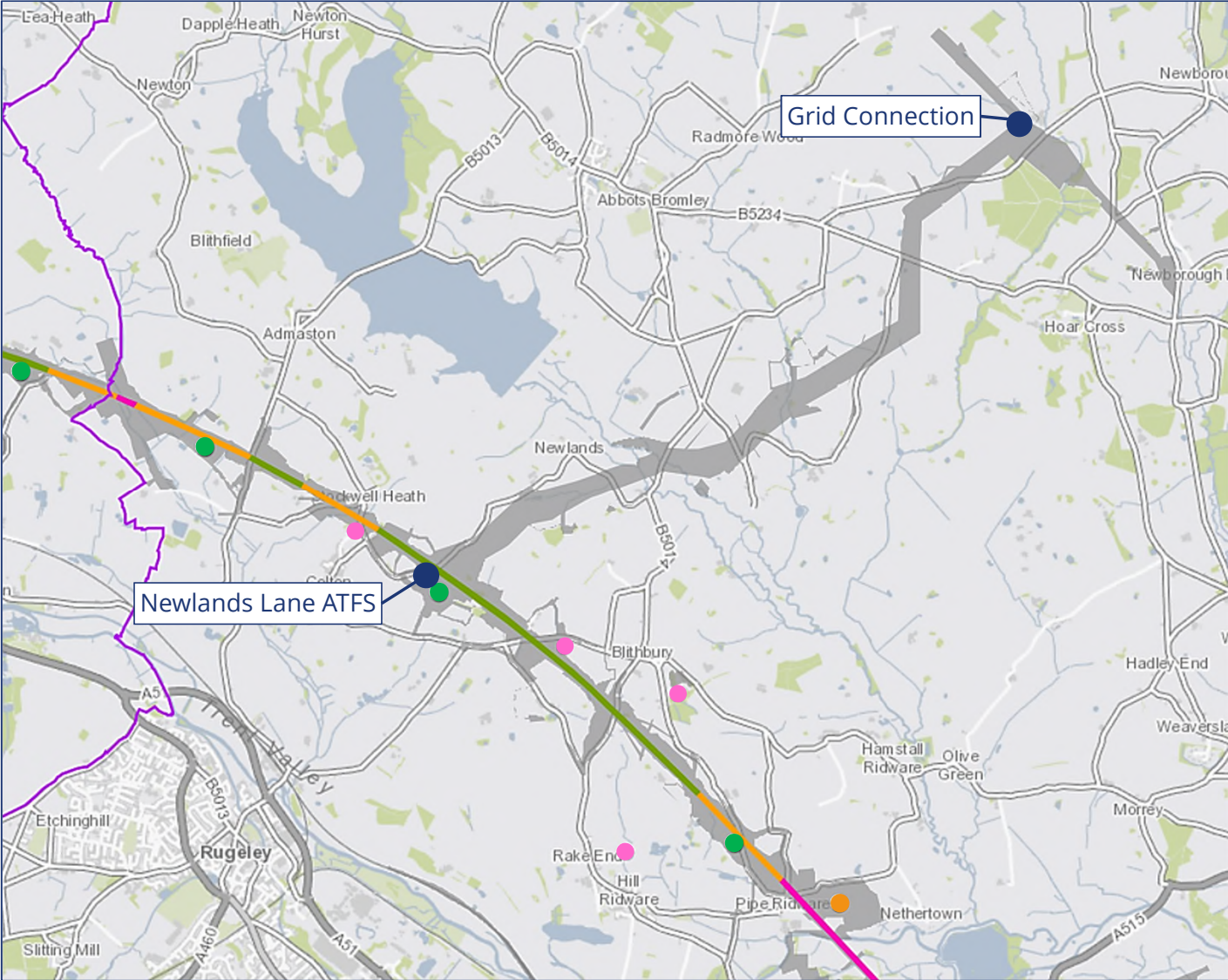
Kings Bromley Viaduct and River Trent Viaduct



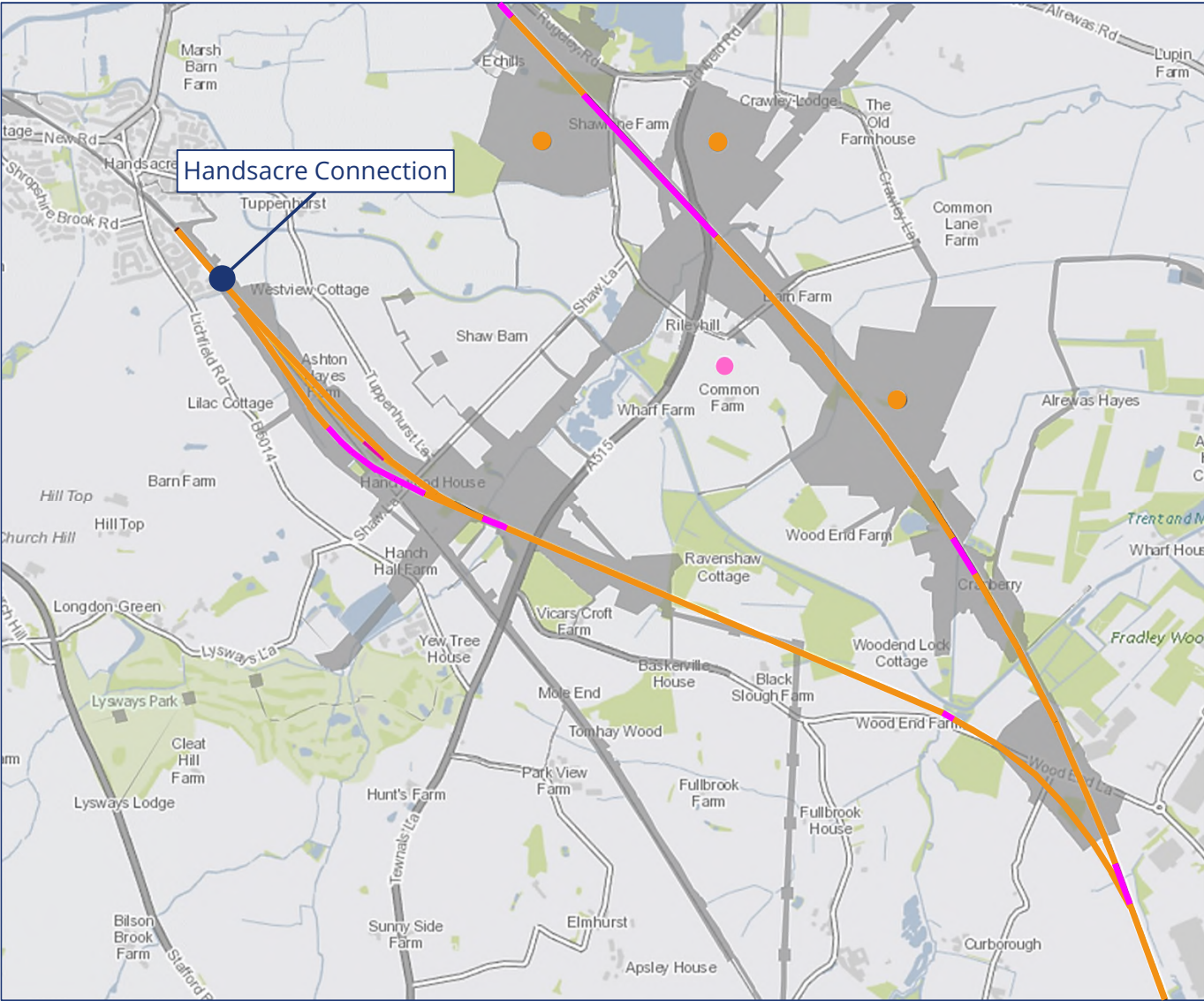
- Embankment
- Viaduct
- Borrow Pits
- Petition Locations (Individual)
- Hybrid Bill Limits

Grid Connection

- Cutting
- Embankment
- Viaduct
- Community Area Boundary
- Local Placement
- Borrow Pits
- Petition Locations (Individual)
- Hybrid Bill Limits



Handsacre Connection

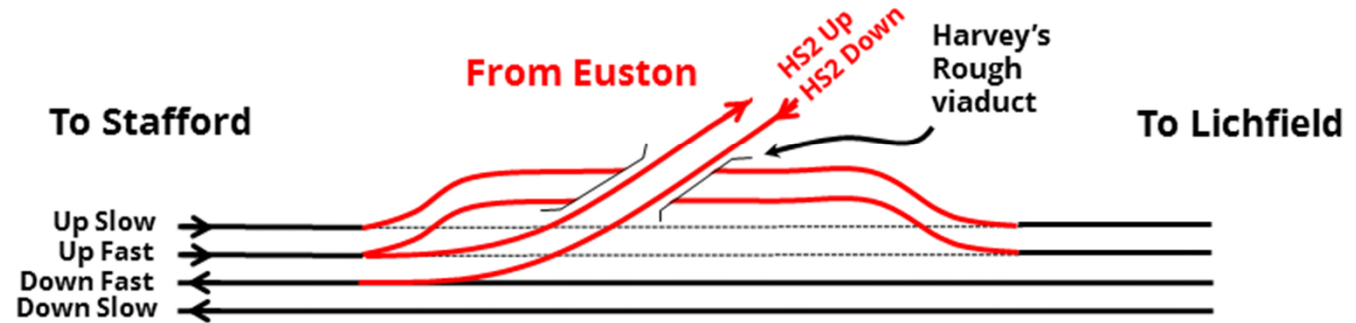


- Embankment
- Viaduct
- Borrow Pits
- Petition Locations (Individual)
- Hybrid Bill Limits

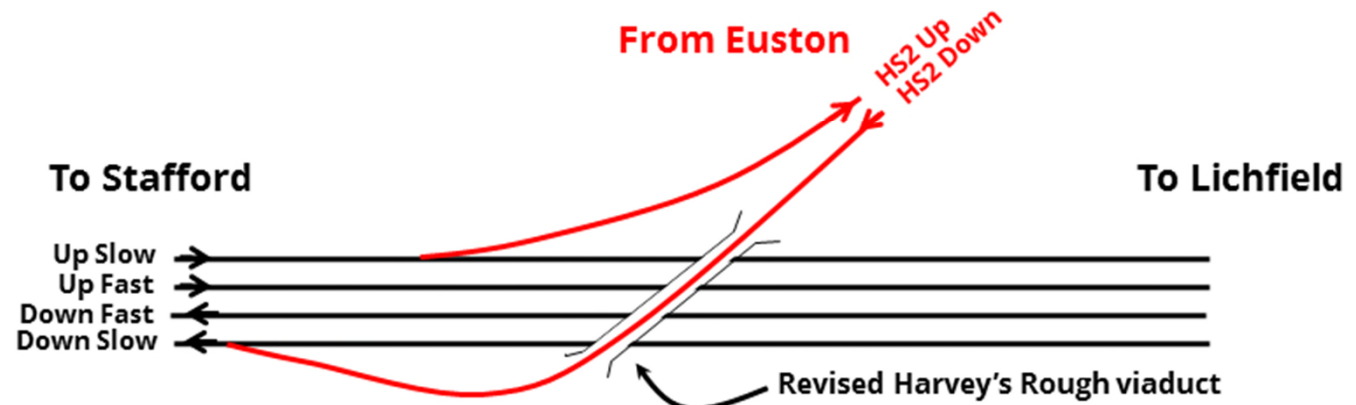
Handsacre Junction



Hybrid Bill Connection

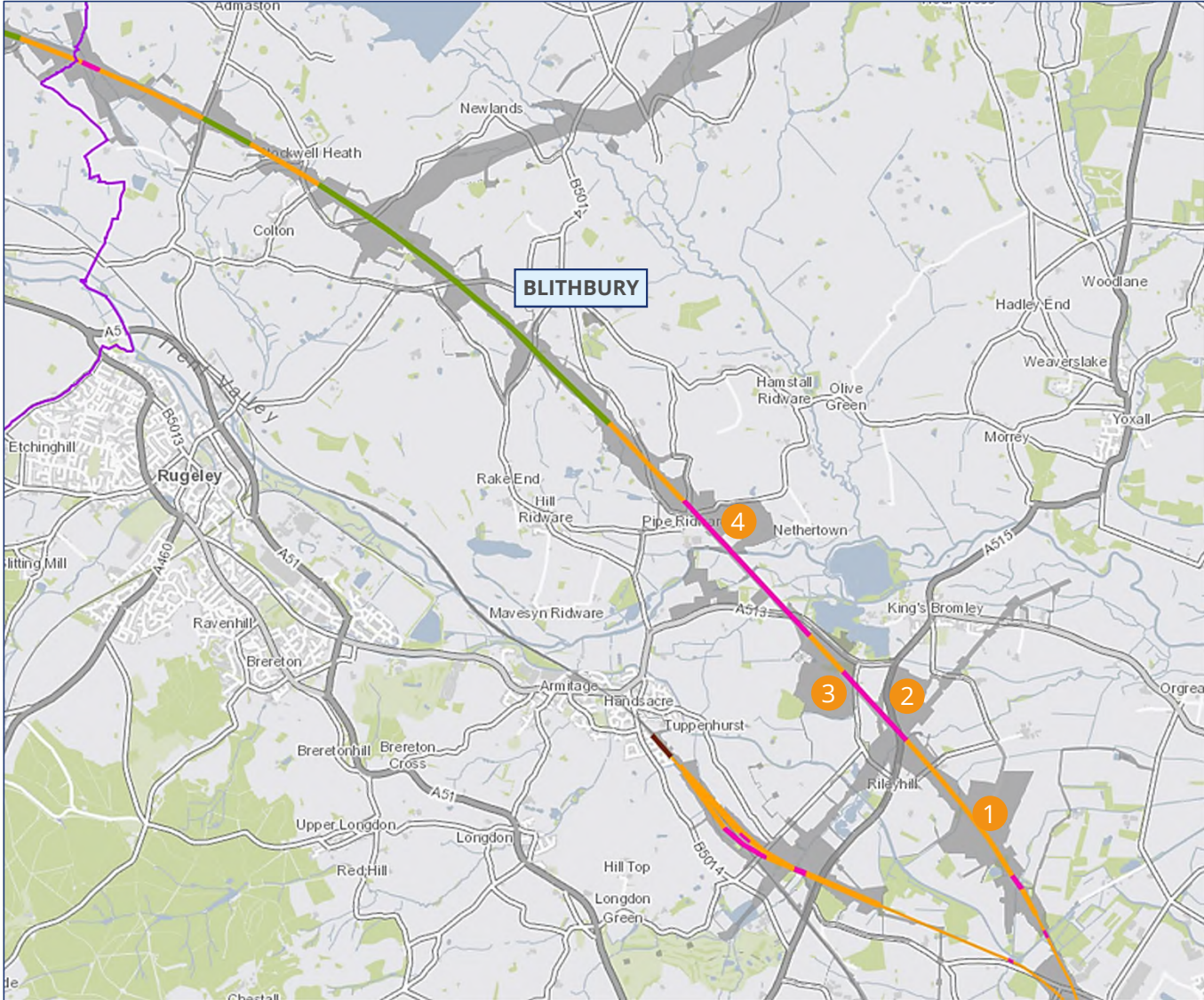


AP2 Connection

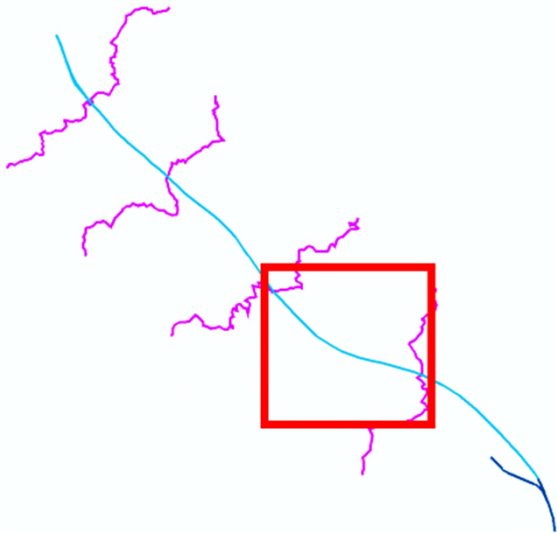


Borrow Pits (CA1)

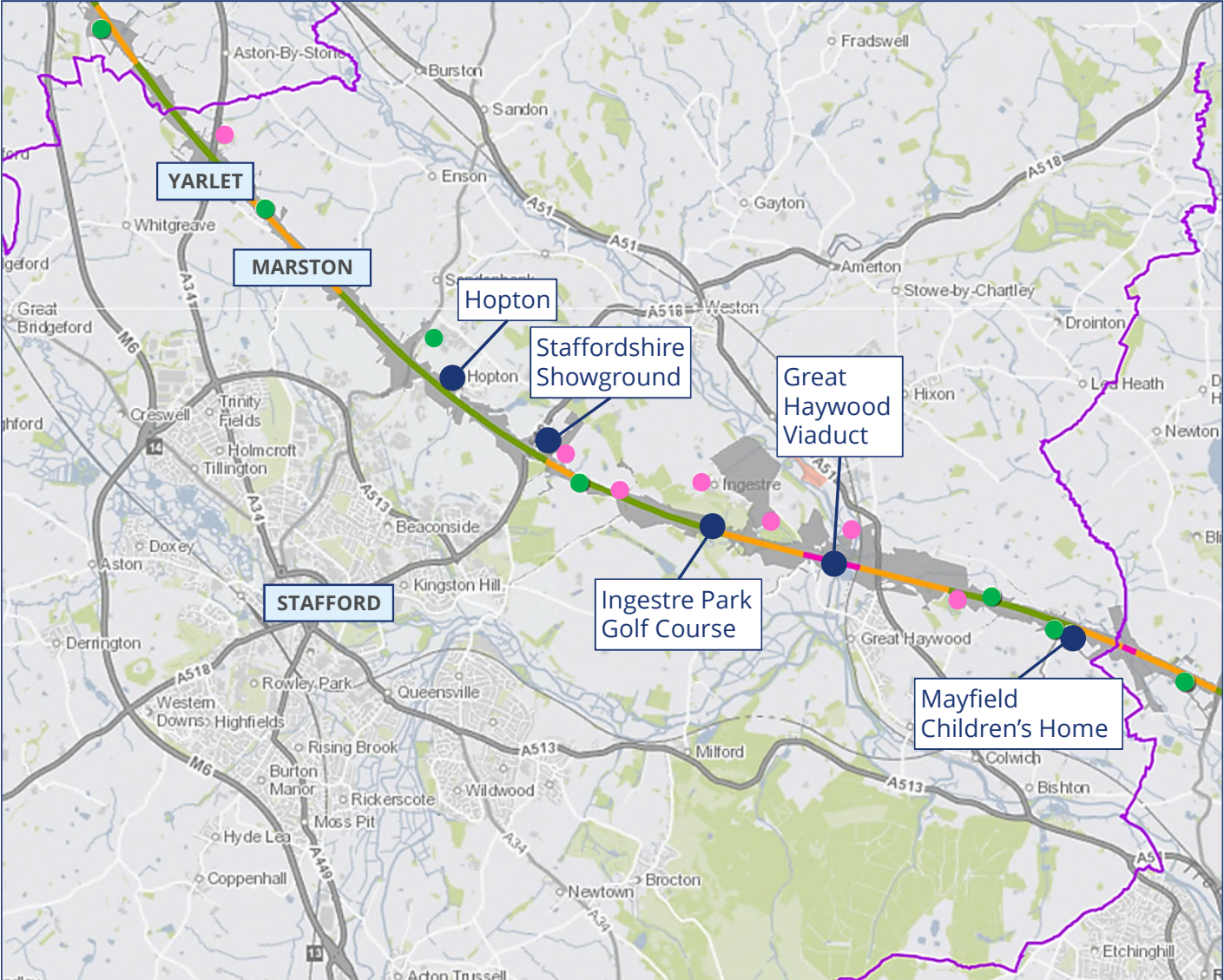
- Cutting
- Embankment
- Viaduct
- Community Area Boundary
- 1 King's Bromley South
- 2 King's Bromley North (A515)
- 3 King's Bromley North (Shaw Lane)
- 4 Blithbury
- Hybrid Bill Limits



Colwich to Yarlet (CA2)



- Cutting
- Embankment
- Viaduct
- Community Area Boundary
- Local Placement
- Petition Locations (Individual)
- Hybrid Bill Limits

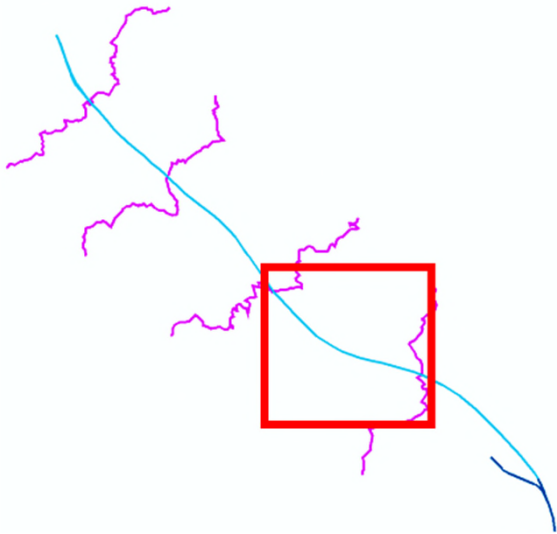


Mayfield Children's Home

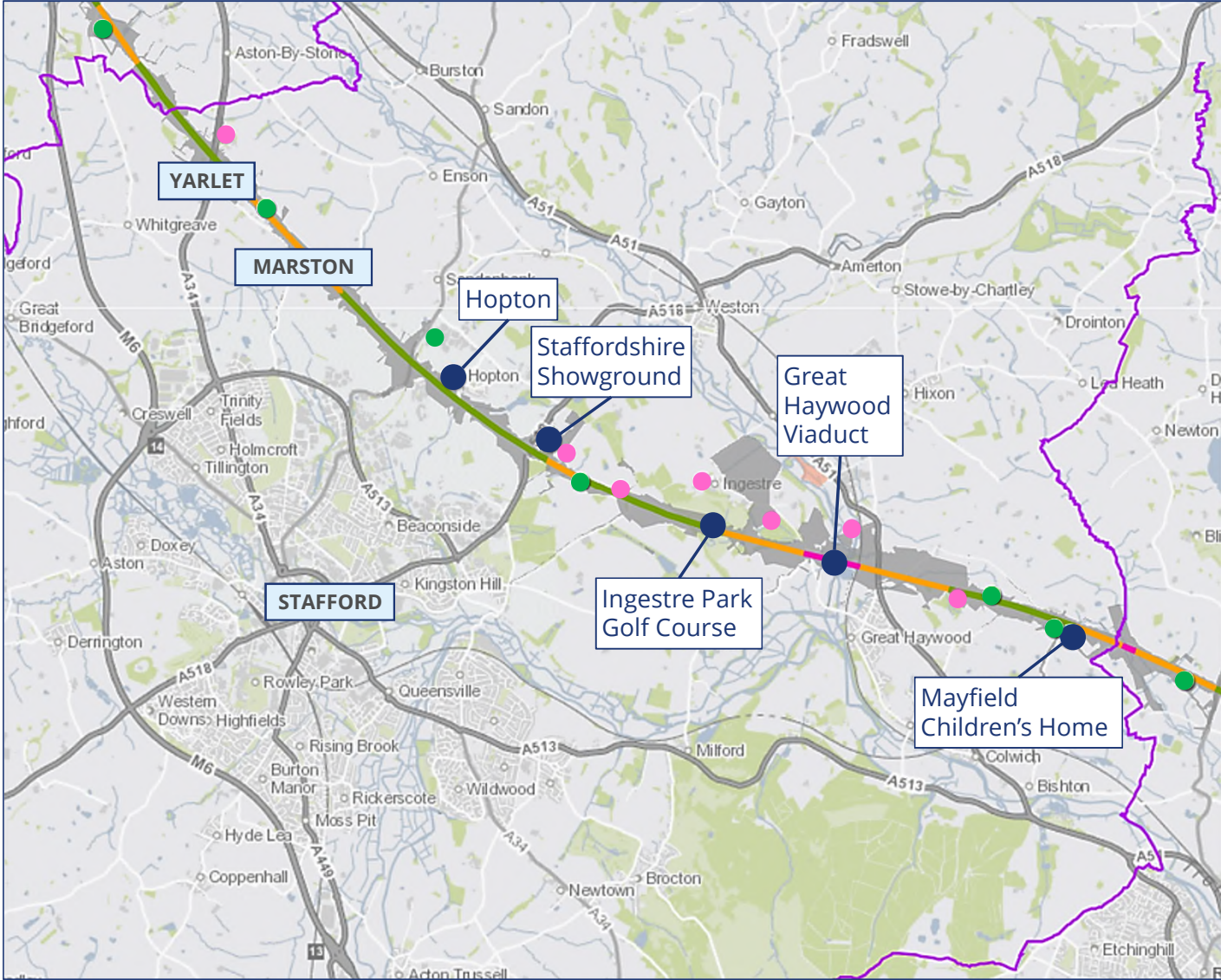


- Cutting
- Embankment
- Viaduct
- Community Area Boundary
- Local Placement
- Petition Locations (Individual)
- Hybrid Bill Limits

Colwich to Yarlet (CA2)



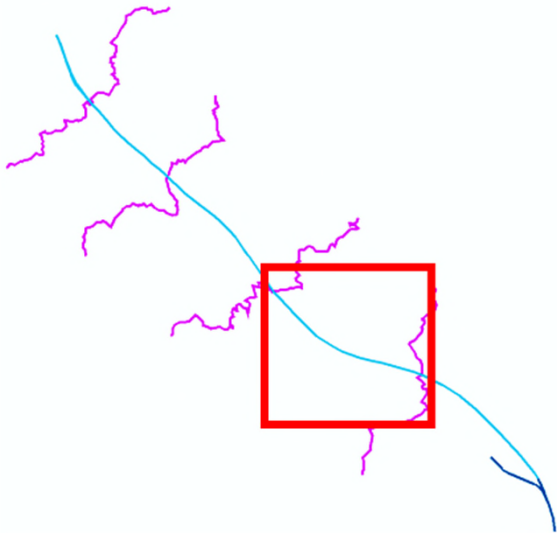
- Cutting
- Embankment
- Viaduct
- Community Area Boundary
- Local Placement
- Petition Locations (Individual)
- Hybrid Bill Limits



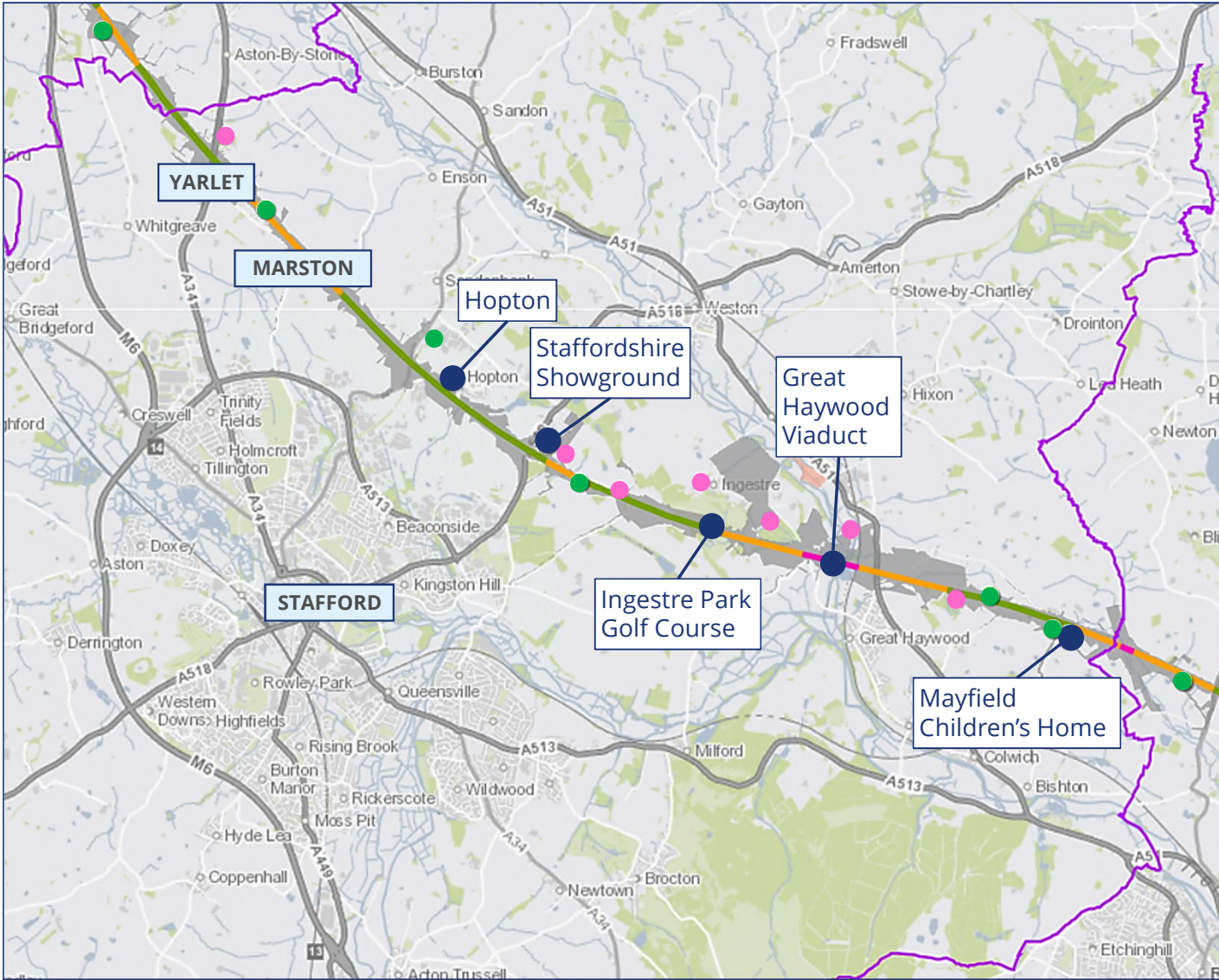
Great Haywood Viaduct



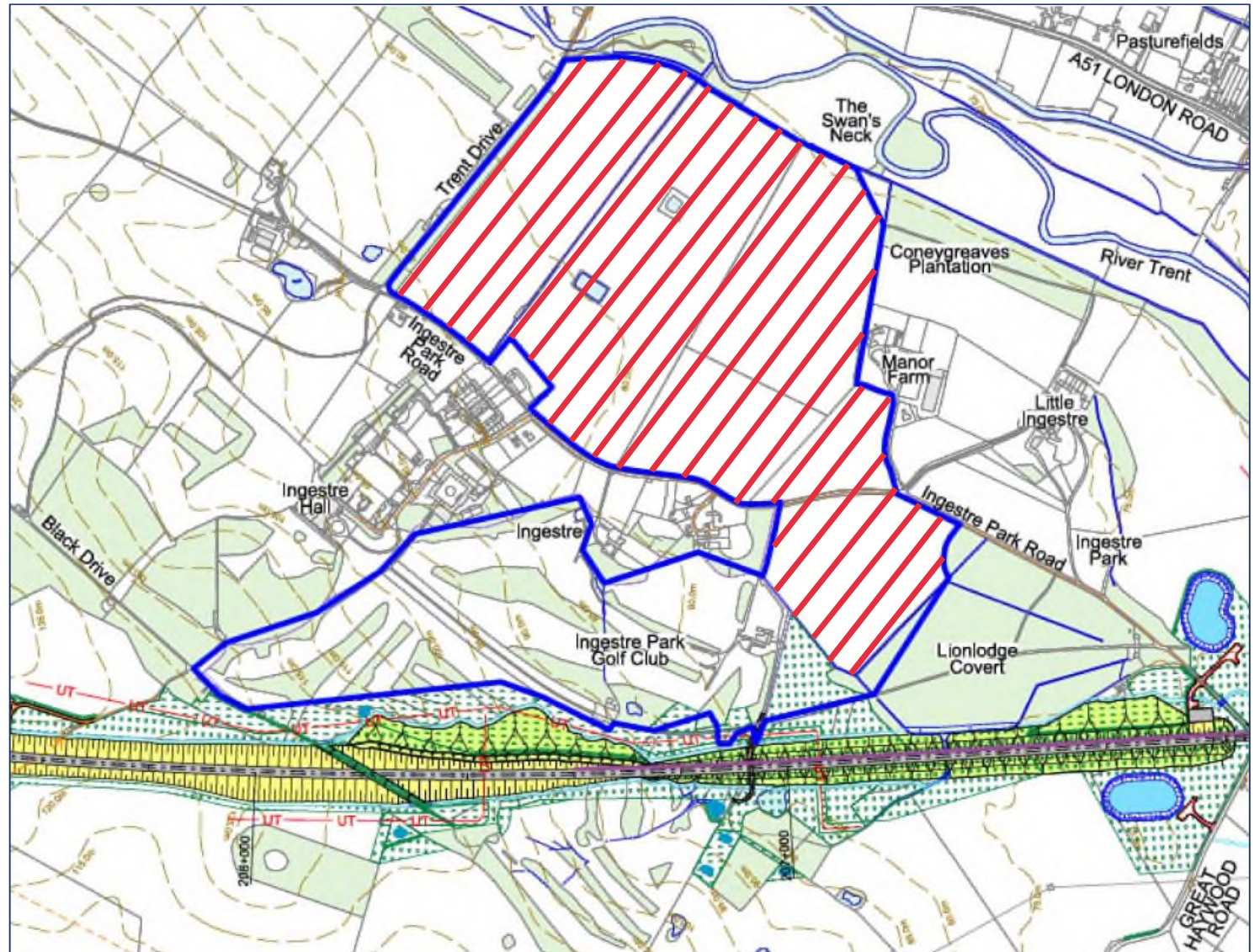
Colwich to Yarlet (CA2)





- Cutting
- Embankment
- Viaduct
- Community Area Boundary
- Local Placement
- Petition Locations (Individual)
- Hybrid Bill Limits

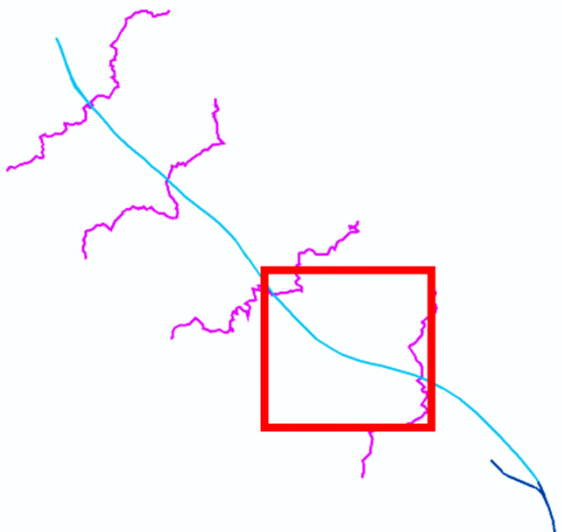


Ingestre Park Golf Club AP2 Additional land

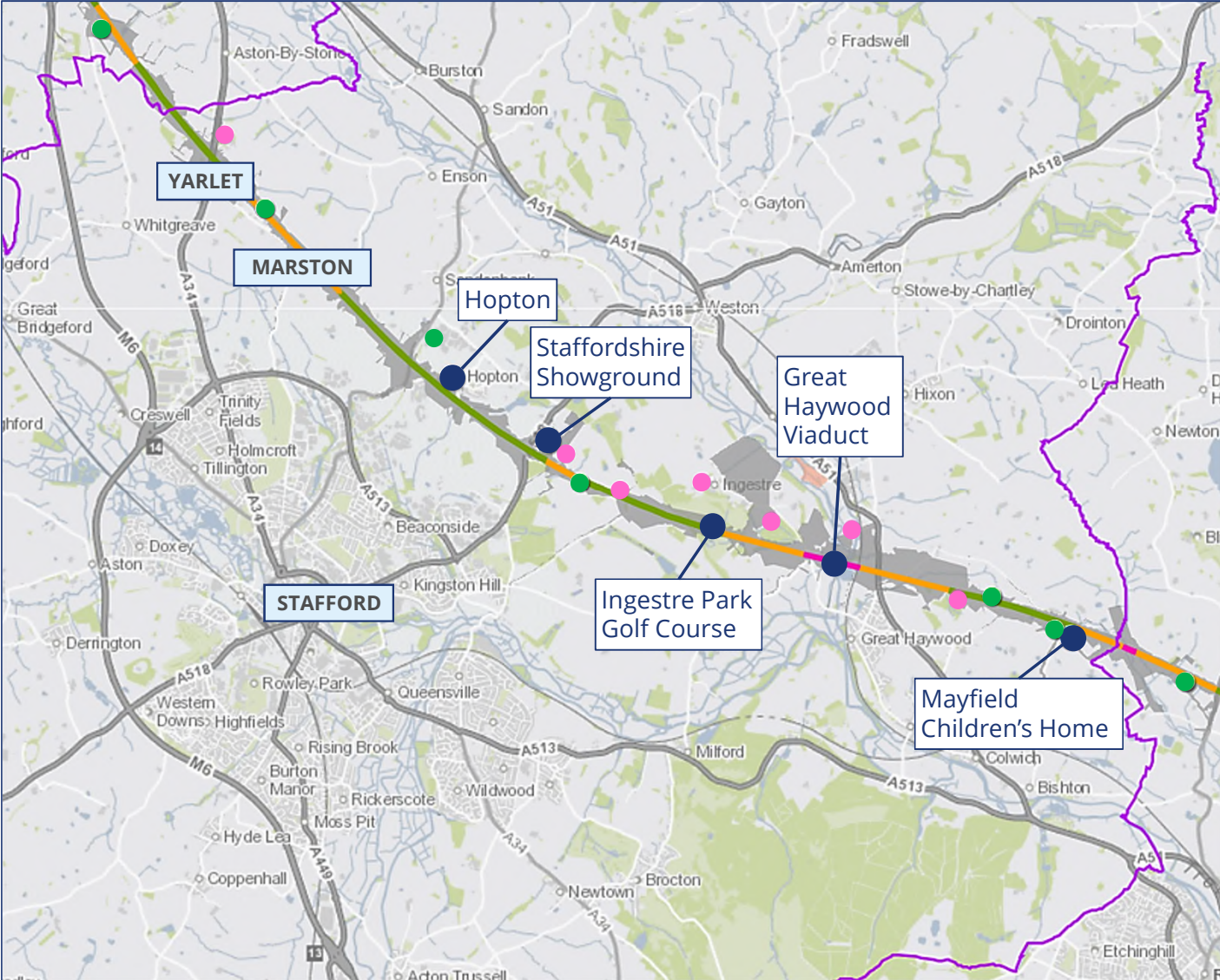


-  Bill reconfiguration scheme - indicative layout
-  AP2 additional land

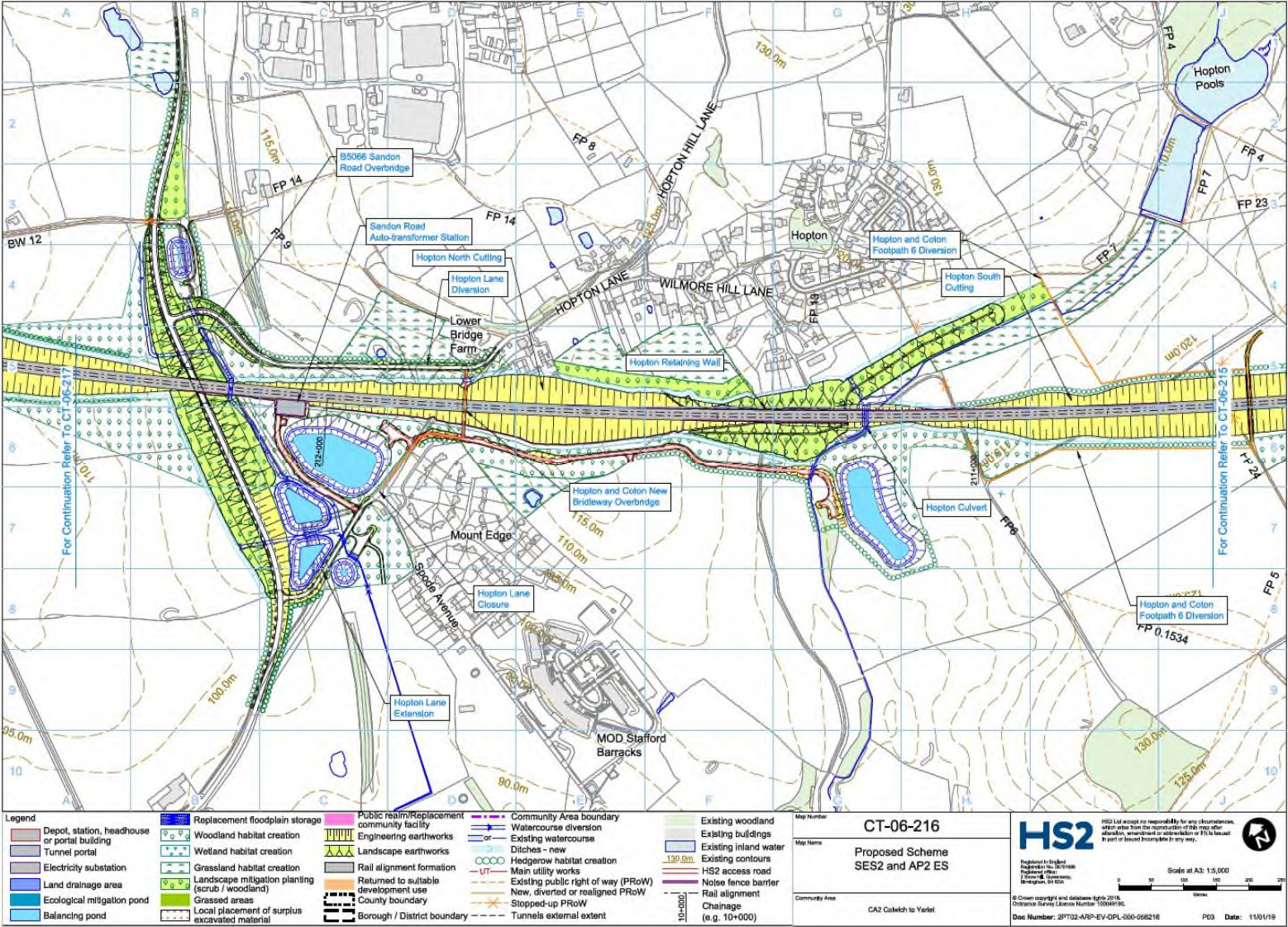
Colwich to Yarlet (CA2)



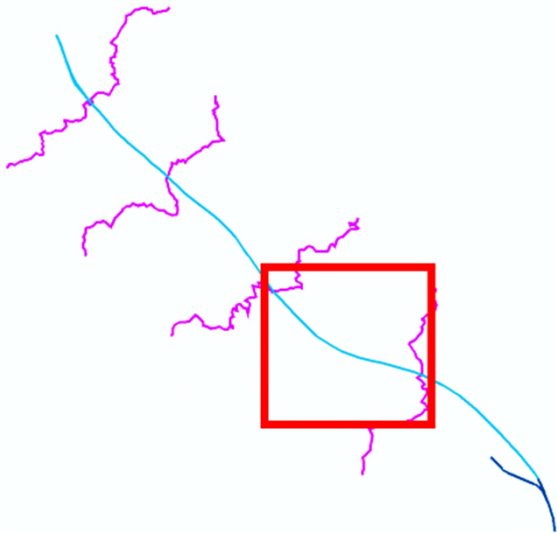
- Cutting
- Embankment
- Viaduct
- Community Area Boundary
- Local Placement
- Petition Locations (Individual)
- Hybrid Bill Limits



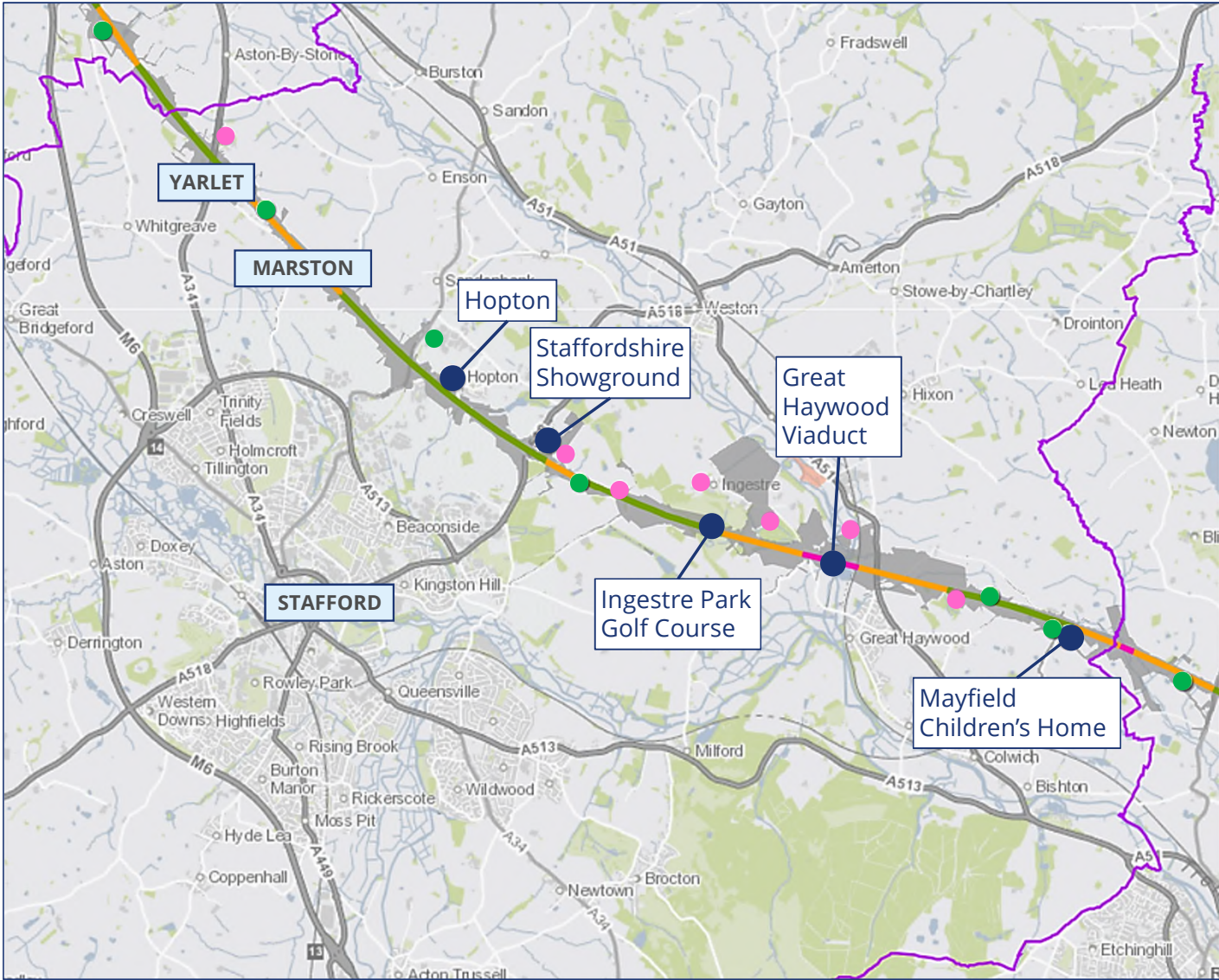
Hopton Village



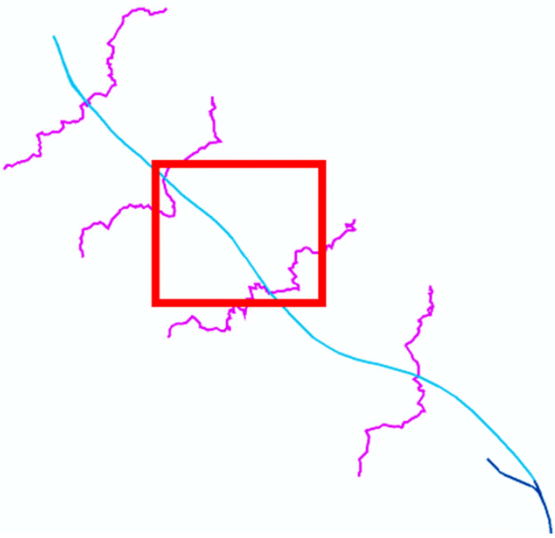
Colwich to Yarlet (CA2)



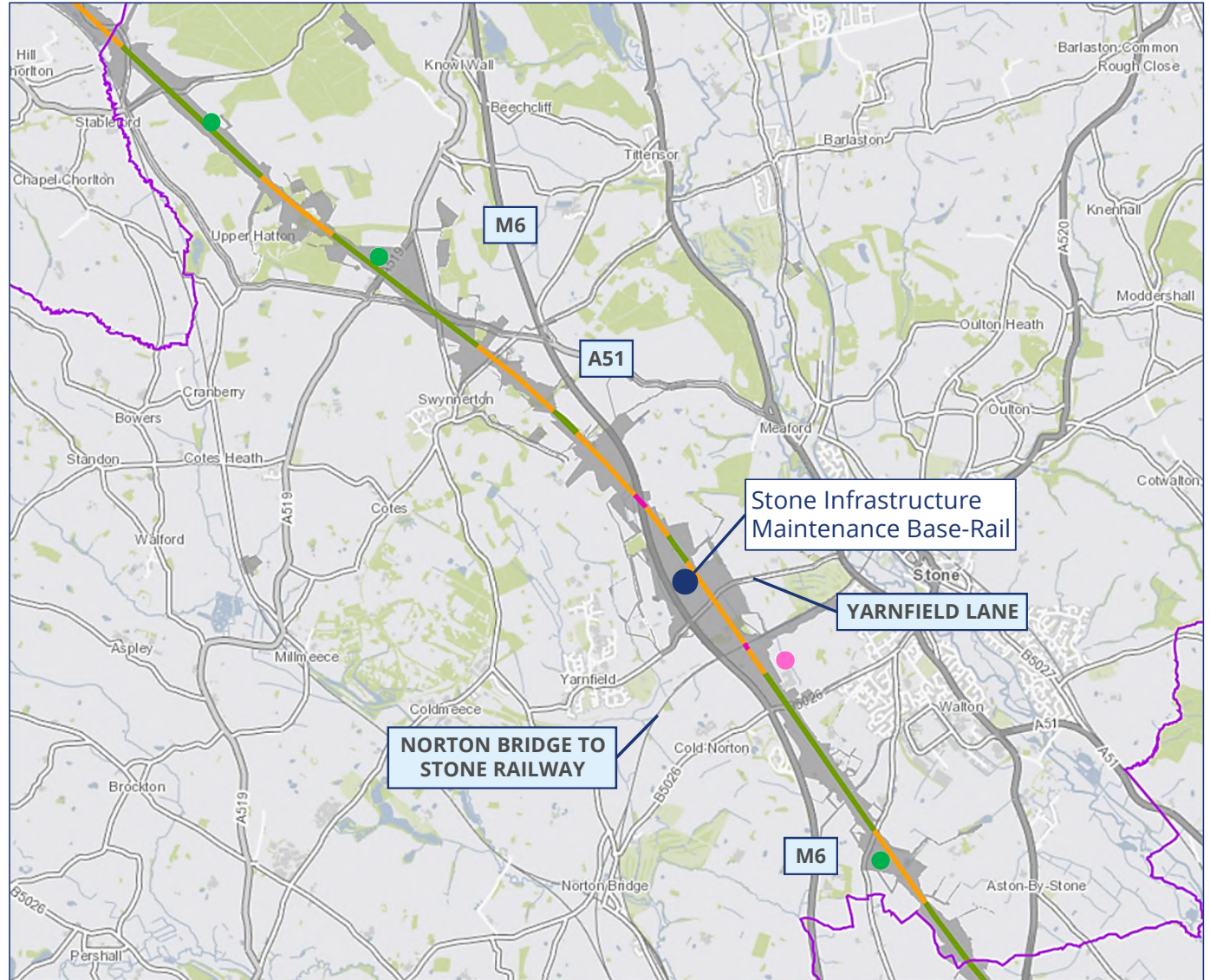
- Cutting
- Embankment
- Viaduct
- Community Area Boundary
- Local Placement
- Petition Locations (Individual)
- Hybrid Bill Limits



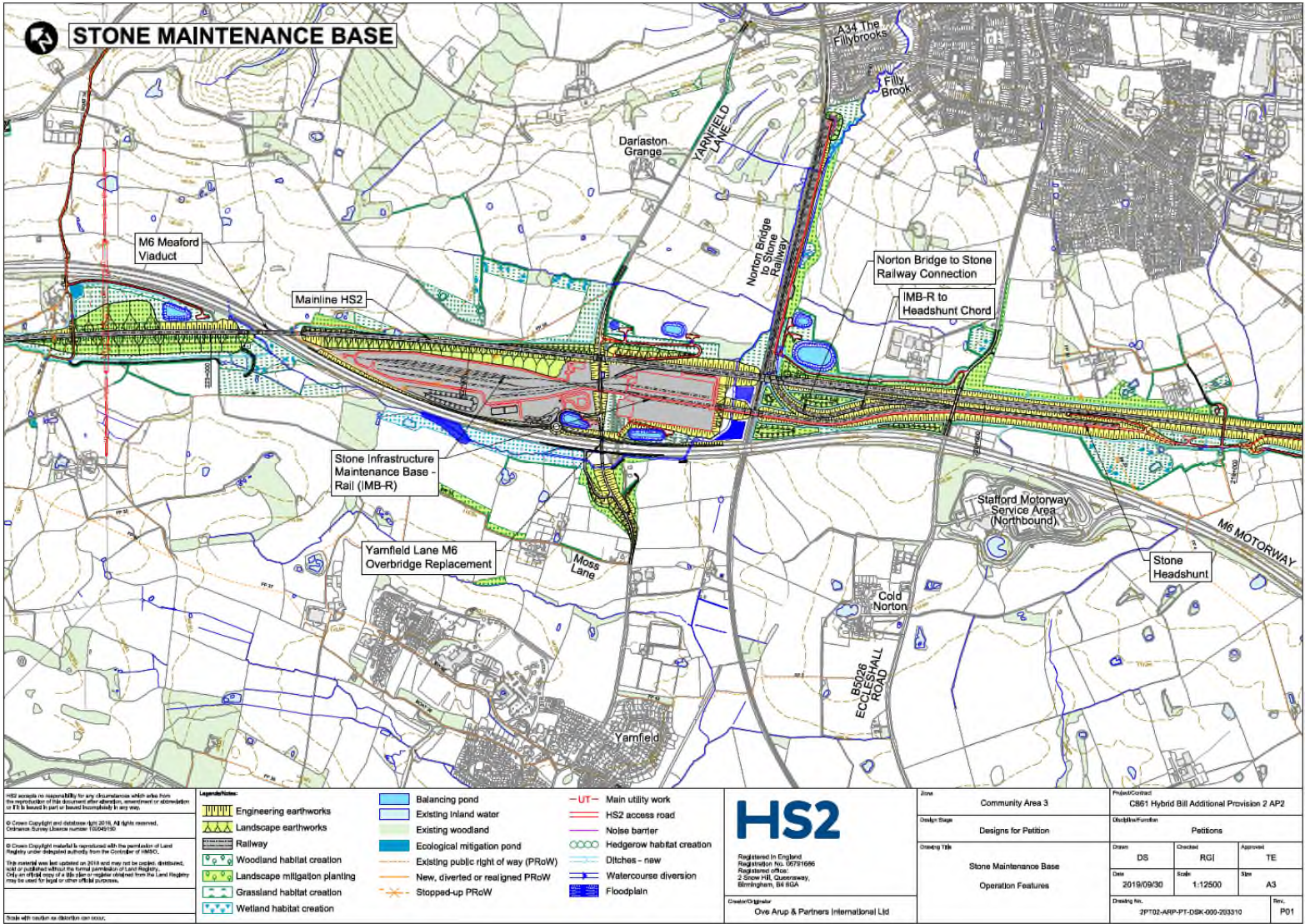
Stone and Swynnerton (CA3)



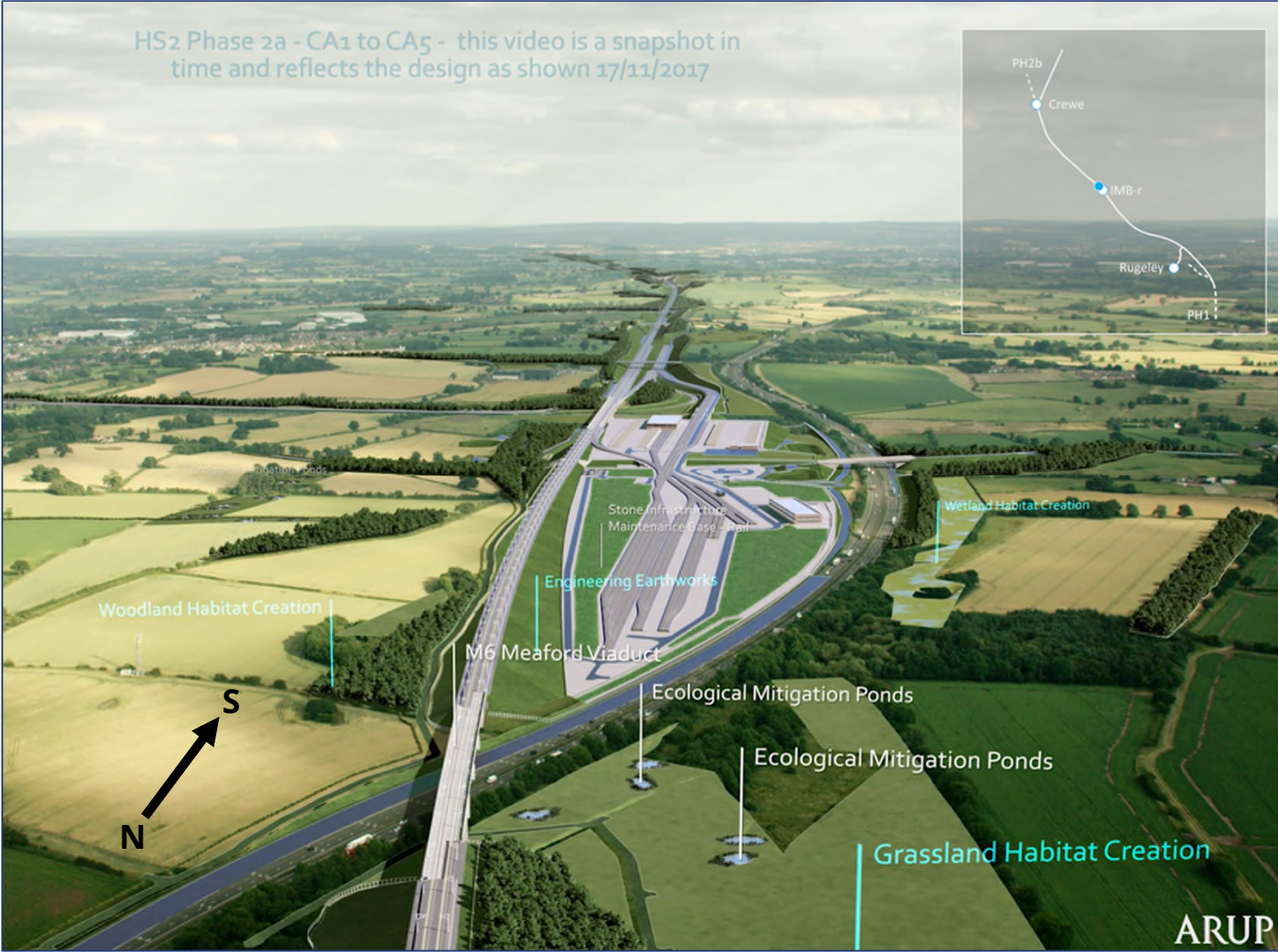
- Cutting
- Embankment
- Viaduct
- Community Area Boundary
- Local Placement
- Petition Locations (Individual)
- Hybrid Bill Limits



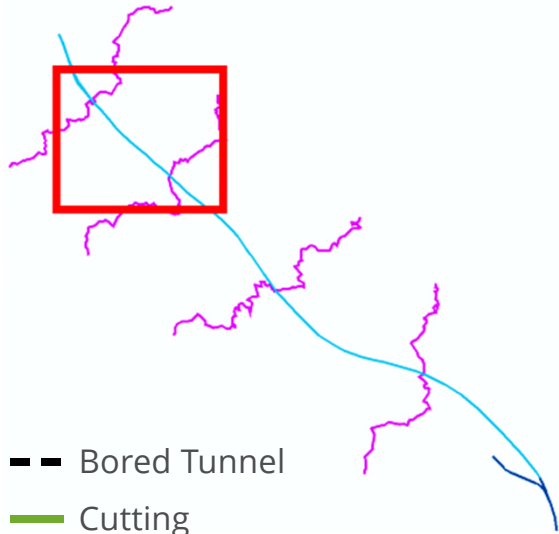
Stone Infrastructure Maintenance Base-Rail (CT-06)



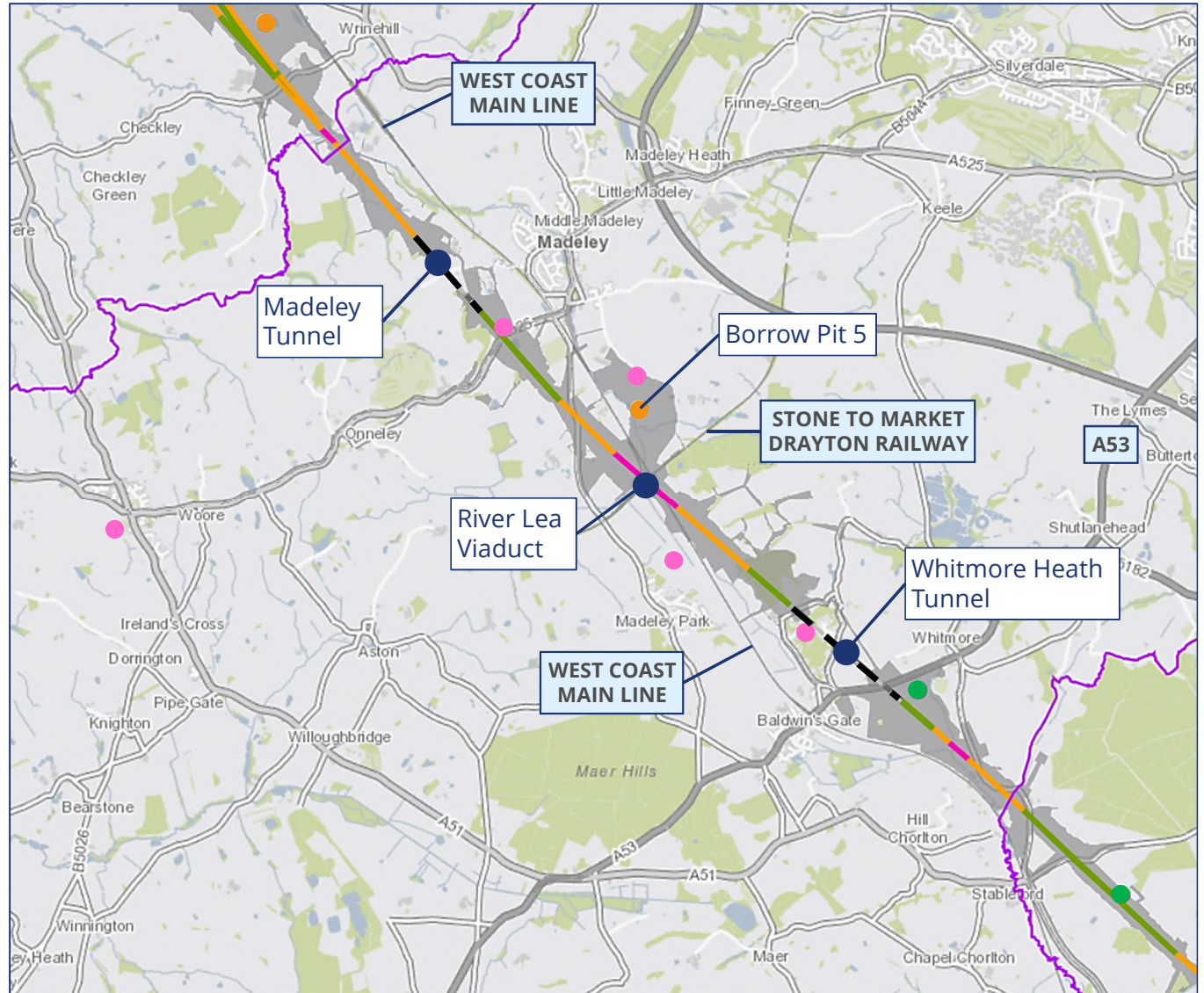
Stone Infrastructure Maintenance Base-Rail (Aerial View)



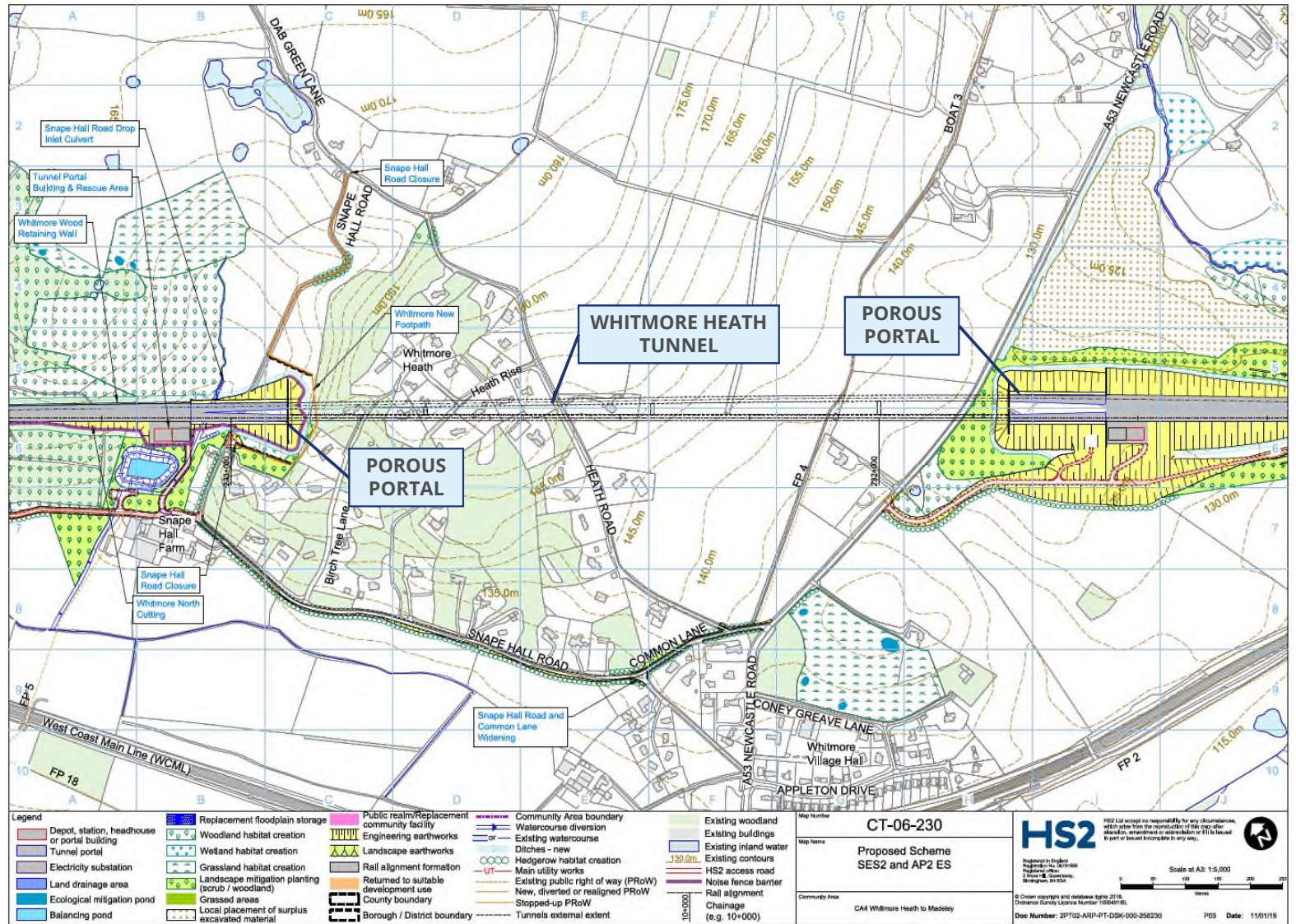
Whitmore Heath to Madeley (CA4)



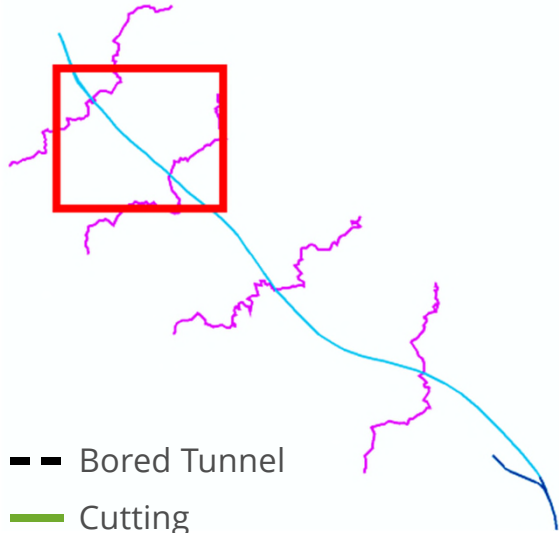
- Bored Tunnel
- Cutting
- Embankment
- Viaduct
- Community Area Boundary
- Local Placement
- Borrow Pits
- Petition Locations (Individual)
- Hybrid Bill Limits



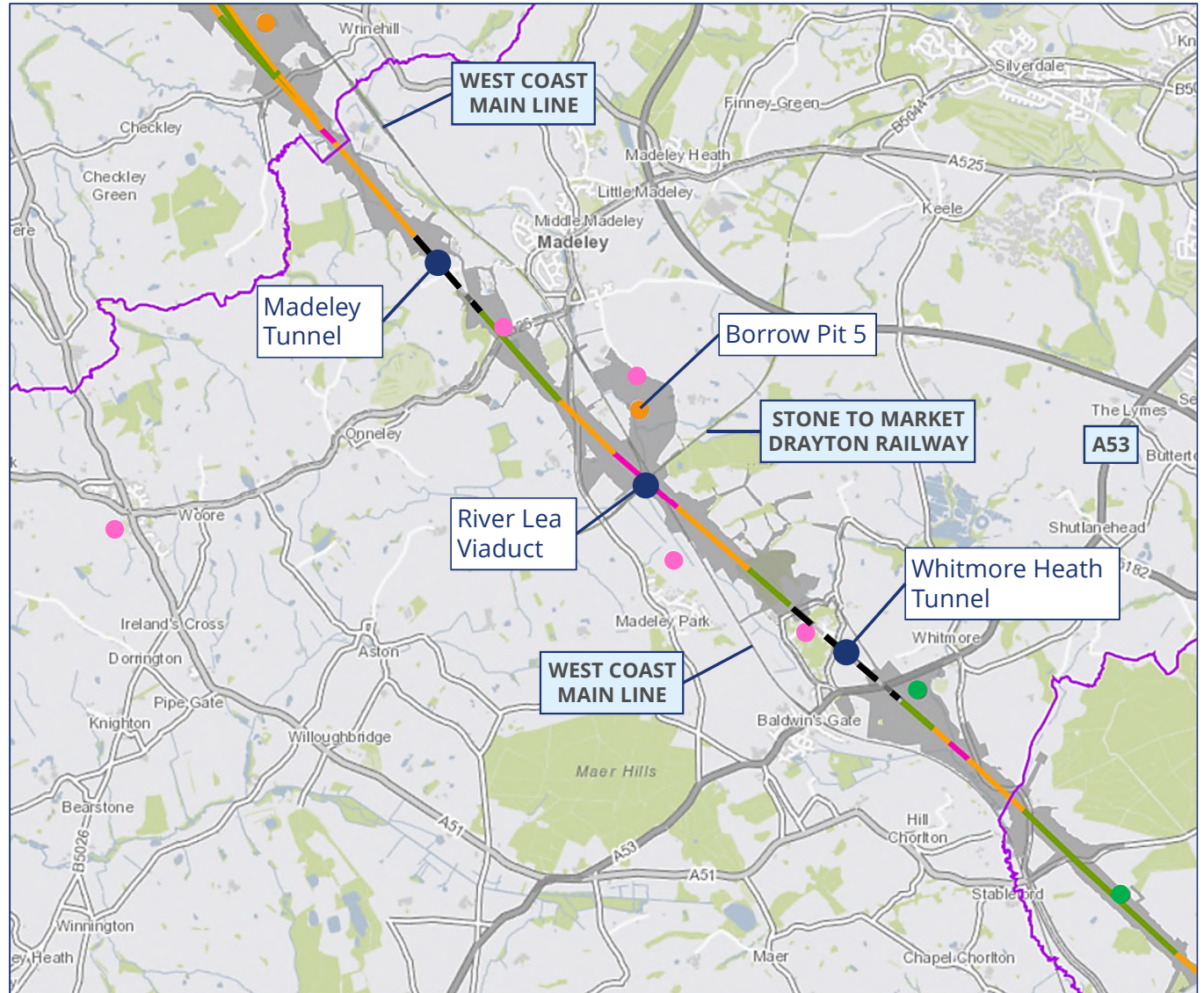
Whitmore Heath Tunnel



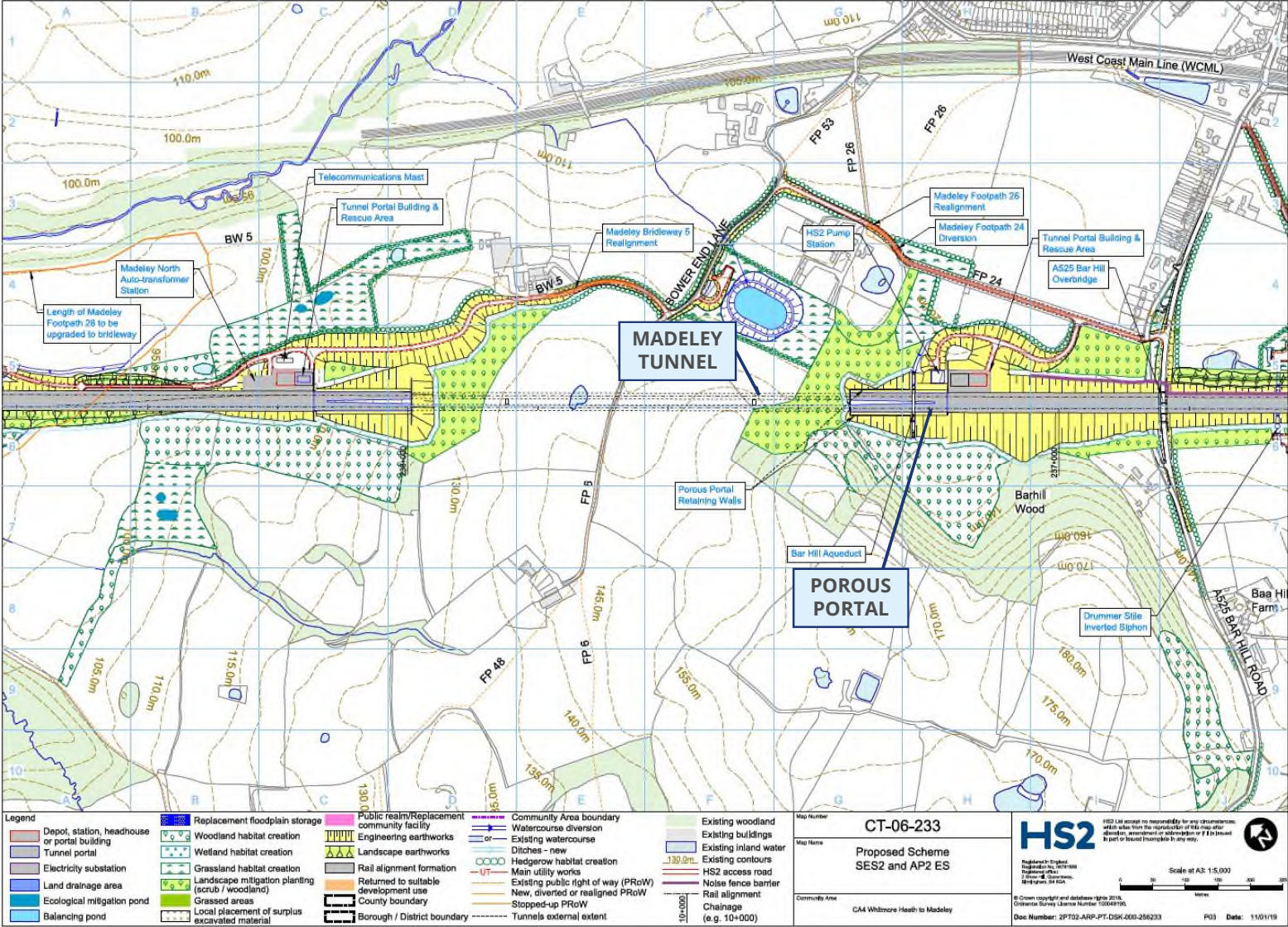
Whitmore Heath to Madeley (CA4)



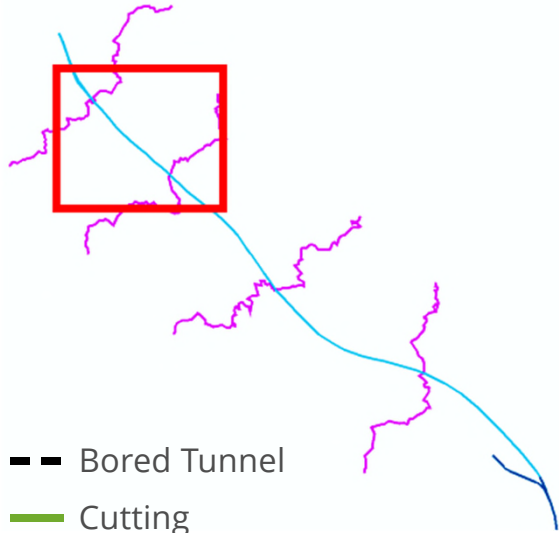
- Bored Tunnel
- Cutting
- Embankment
- Viaduct
- Community Area Boundary
- Local Placement
- Borrow Pits
- Petition Locations (Individual)
- Hybrid Bill Limits



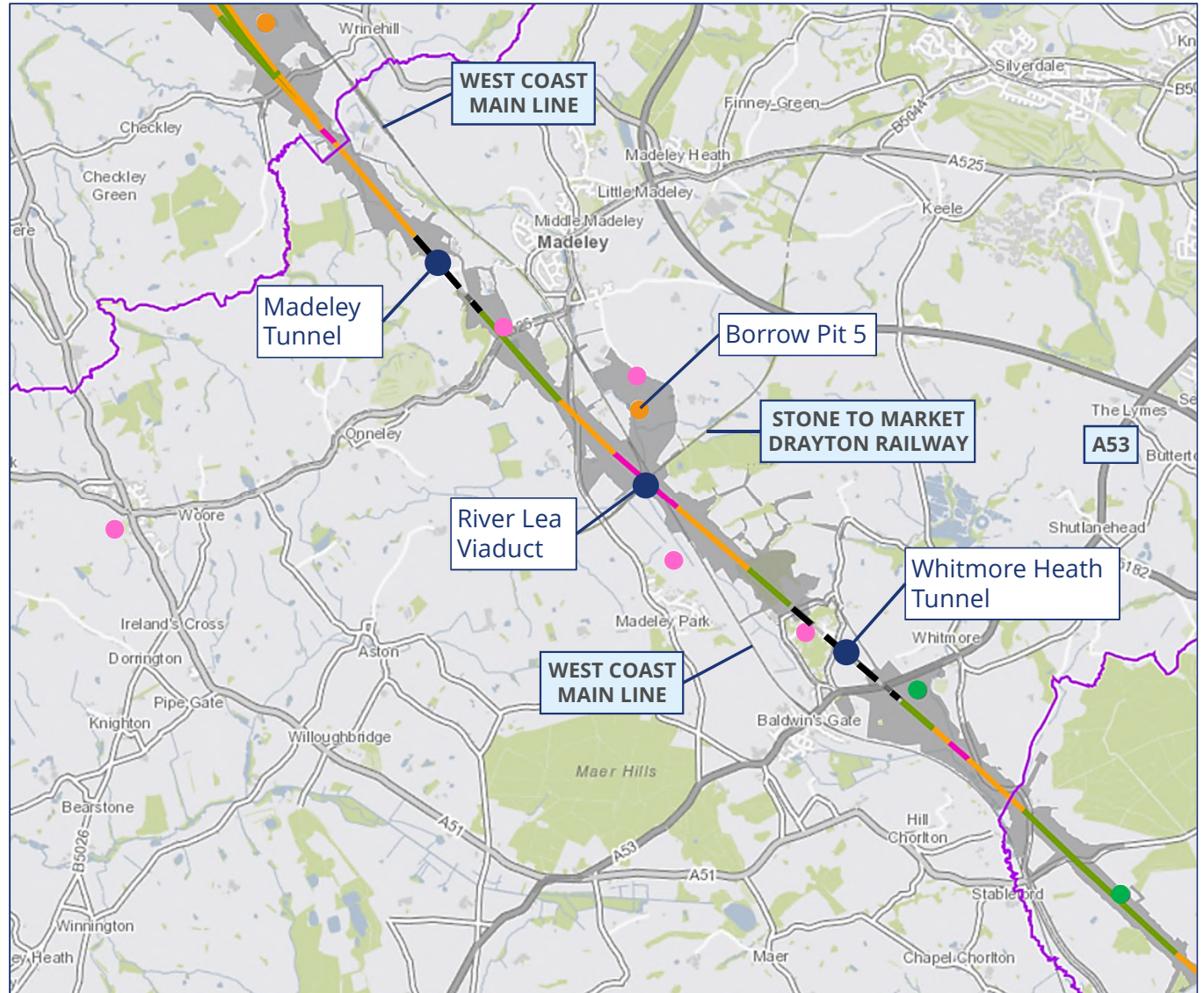
Madeley Tunnel



Whitmore Heath to Madeley (CA4)

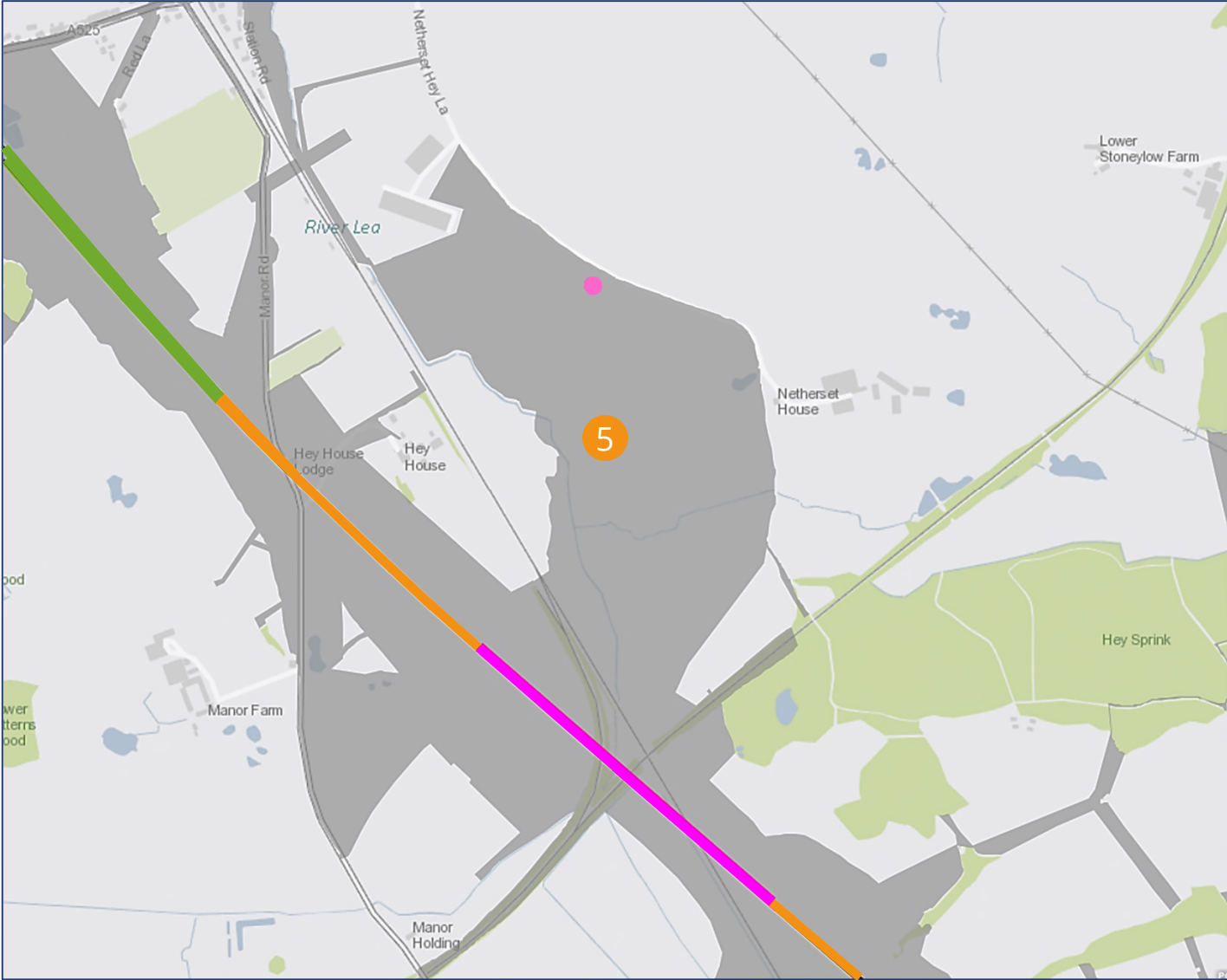


- Bored Tunnel
- Cutting
- Embankment
- Viaduct
- Community Area Boundary
- Local Placement
- Borrow Pits
- Petition Locations (Individual)
- Hybrid Bill Limits

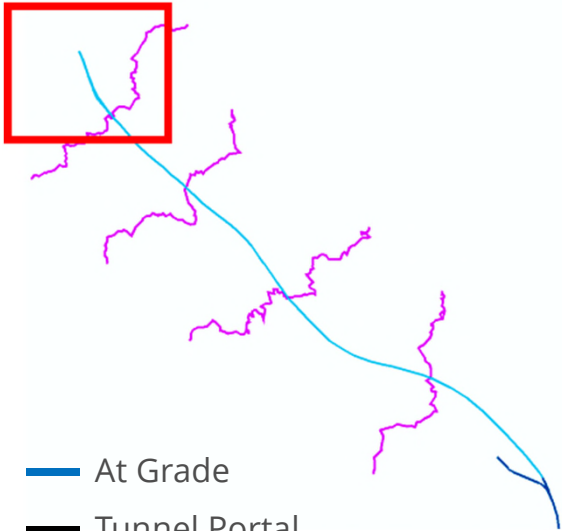


Borrow Pit 5 (West of Netherset Hay Farmhouse)

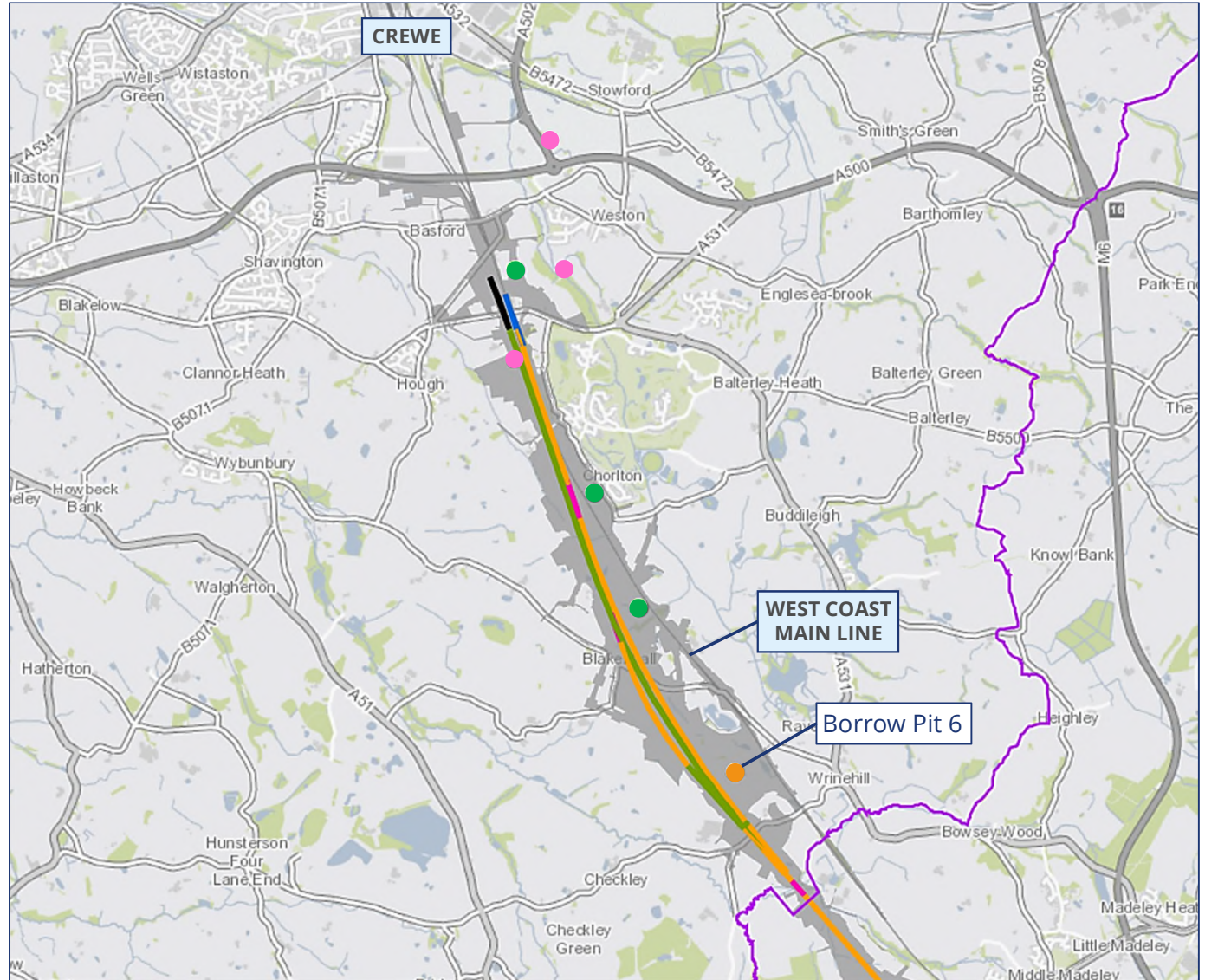
- Cutting
- Embankment
- Viaduct
- 5 West of Netherset Hey Farmhouse
- Petition Locations (Individual)
- Hybrid Bill Limits



South Cheshire (CA5)



- At Grade
- Tunnel Portal
- Cutting
- Embankment
- Viaduct
- Community Area Boundary
- Local Placement
- Borrow Pits
- Petition Locations (Individual)
- Hybrid Bill Limits



High Speed Rail (West Midlands - Crewe) Bill

EXPLANATORY NOTES

Explanatory notes to the Bill, prepared by the Department for Transport, have been ordered to be published as HL Bill 193—EN.

EUROPEAN CONVENTION ON HUMAN RIGHTS

Baroness Vere of Norbiton has made the following statement under section 19(1)(a) of the Human Rights Act 1998:

In my view the provisions of the High Speed Rail (West Midlands - Crewe) Bill are compatible with the Convention rights.

E8



High Speed Rail (West Midlands - Crewe)

Environmental Statement

Volume 1: Introduction and methodology

July 2017

ES 3.1.1

HS2

High Speed Rail (West Midlands - Crewe)

Supplementary Environmental Statement 2 and
Additional Provision 2 Environmental Statement

Volume 1

Introduction and methodology

February 2019

J8



HIGH SPEED TWO PHASE 2a INFORMATION PAPER

C3: LAND ACQUISITION POLICY

This paper outlines how landowners will be compensated for the acquisition of their land required for the construction and operation of the Proposed Scheme.

It will be of particular interest to those potentially affected by the Government's proposals for high speed rail.

This paper was prepared in relation to the promotion of the Bill: High Speed Rail (West Midlands-Crewe). Content will be maintained and updated as considered appropriate during the passage of the Bill.

If you have any queries about this paper or about how it might apply to you, please contact the HS2 Helpdesk in the first instance.

The Helpdesk can be contacted:

by email: HS2enquiries@hs2.org.uk

by phone (24hrs): 08081 434 434
08081 456 472 (minicom)

or by post: High Speed Two (HS2) Limited
2 Snowhill, Queensway
Birmingham
B4 6GA

Version 1.2
Last update 15 February 2019

Extract from Information Paper C3: Land Acquisition Policy

Paragraph 3.3

3.3. The Bill generally includes full land acquisition powers. However, in any individual case, the exercise of these powers will operate on the basis that the Secretary of State will acquire no greater amount of land than appears to him to be reasonably required following the detailed design of the Proposed Scheme.



HIGH SPEED TWO PHASE 2a INFORMATION PAPER

C8: COMPENSATION CODE FOR COMPULSORY PURCHASE

This paper outlines how landowners will be compensated for the acquisition of their land required for the construction and operation of the Proposed Scheme.

It will be of particular interest to those potentially affected by the Government's proposals for high speed rail.

This paper was prepared in relation to the promotion of the Bill: High Speed Rail (West Midlands-Crewe). Content will be maintained and updated as considered appropriate during the passage of the Bill.

If you have any queries about this paper or about how it might apply to you, please contact the HS2 Helpdesk in the first instance.

The Helpdesk can be contacted:

by email: HS2enquiries@hs2.org.uk

by phone (24hrs): 08081 434 434
08081 456 472 (minicom)

or by post: High Speed Two (HS2) Limited
2 Snowhill, Queensway
Birmingham
B4 6GA

Version 1.2
Last updated 15 February 2019

PROPERTY SCHEMES

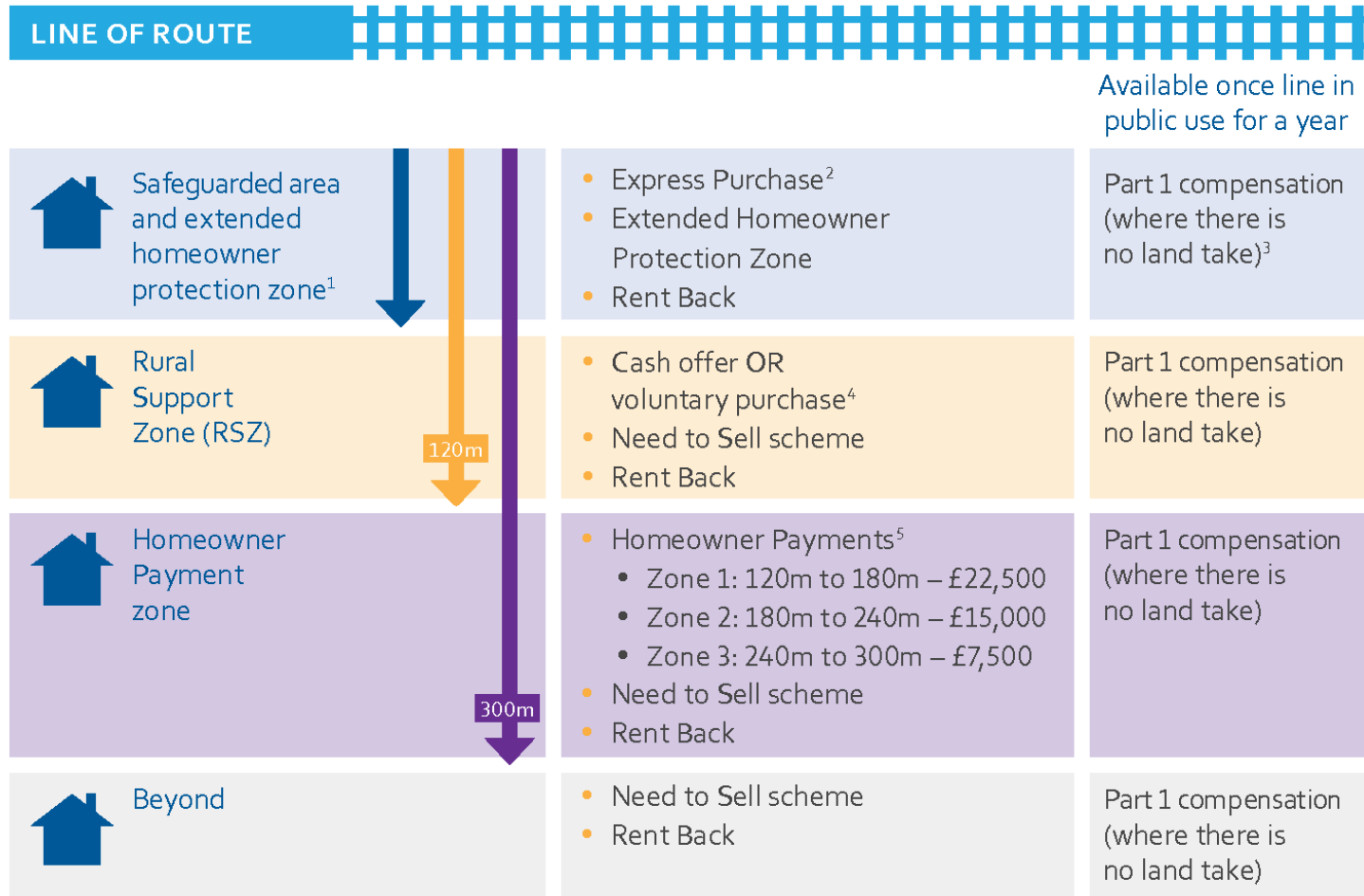


Guide to HS2 property schemes
Phase 2a



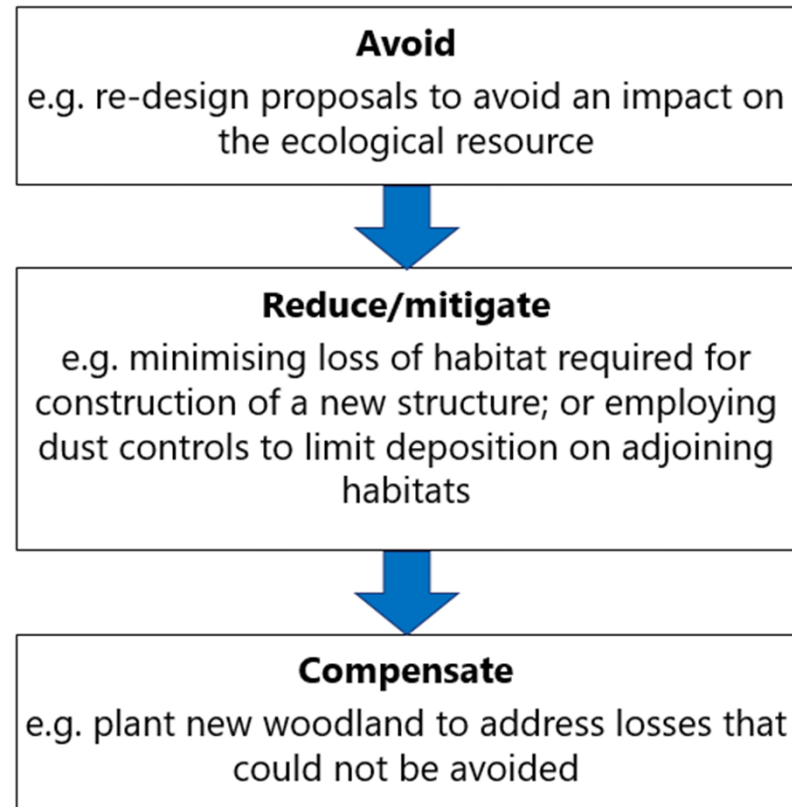
CS858/08-17

HS2 Property Schemes



¹ Usually 60m in rural areas. ² Surface safeguarding only. ³ Compensation for any reduction in the value of property as a result of the physical effects of the operation of the railway. ⁴ Applies to rural areas only and does not extend to areas beyond deep tunnels. ⁵ Only available after Royal Assent of the Bill. Applies to rural areas only and does not extend to areas beyond deep tunnels.

The mitigation hierarchy





HIGH SPEED TWO PHASE 2a INFORMATION PAPER

E1: CONTROL OF ENVIRONMENTAL IMPACTS

This paper outlines how environmental commitments will be met through controls both within and outside the Bill.

It will be of particular interest to those potentially affected by the Government's proposals for high speed rail.

This paper was prepared in relation to the promotion of the Bill: High Speed Rail (West Midlands-Crewe). Content will be maintained and updated as considered appropriate during the passage of the Bill.

If you have any queries about this paper or about how it might apply to you, please contact the HS2 Helpdesk in the first instance.

The Helpdesk can be contacted:

by email: HS2enquiries@hs2.org.uk

by phone (24hrs): 08081 434 434
08081 456 472 (minicom)

or by post: High Speed Two (HS2) Limited
2 Snowhill, Queensway
Birmingham
B4 6GA

Version 1.0
Last updated 17 July 2017

E175



High Speed Rail (West Midlands - Crewe)

Draft Environmental Minimum Requirements

Draft General Principles

July 2017

ES 4.1

E175



High Speed Rail (West Midlands - Crewe)

Draft Environmental Minimum Requirements

Draft General Principles

Annex 1: Draft Code of Construction Practice

Annex 2: Draft Planning Memorandum

Annex 3: Draft Heritage Memorandum

Annex 4: Draft Environmental Memorandum

July 2017



[Home](#)

Policy paper

HS2 Phase 2a register of undertakings and assurances

Provides information on the commitments made in relation to the HS2 Phase 2a High Speed Rail (West Midlands to Crewe) Bill.

Published 2 February 2018

Last updated 24 June 2019 — [see all updates](#)

From: [High Speed Two \(HS2\) Limited](#)

Documents



[HS2 Phase 2a register of undertakings and assurances](#)

XLSM, 432KB



[HS2 Phase 2a register of undertakings and](#)

Related content

[HS2 Phase One information papers: environment \(series E\)](#)

[Environmental minimum requirements for HS2 Phase One](#)

[HS2 Phase One register of undertakings and assurances](#)

[Environmental minimum requirements for HS2 Phase 2a](#)

[Environment: HS2 Phase 2a information papers](#)

High Speed Rail (West Midlands - Crewe) Bill

EXPLANATORY NOTES

Explanatory notes to the Bill, prepared by the Department for Transport, have been ordered to be published as HL Bill 193—EN.

EUROPEAN CONVENTION ON HUMAN RIGHTS

Baroness Vere of Norbiton has made the following statement under section 19(1)(a) of the Human Rights Act 1998:

In my view the provisions of the High Speed Rail (West Midlands - Crewe) Bill are compatible with the Convention rights.