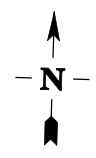


**Homes
England**

Spatial Solutions
Tel: 0300 1234500
Email - spatial.solutions@homesengland.gov.uk

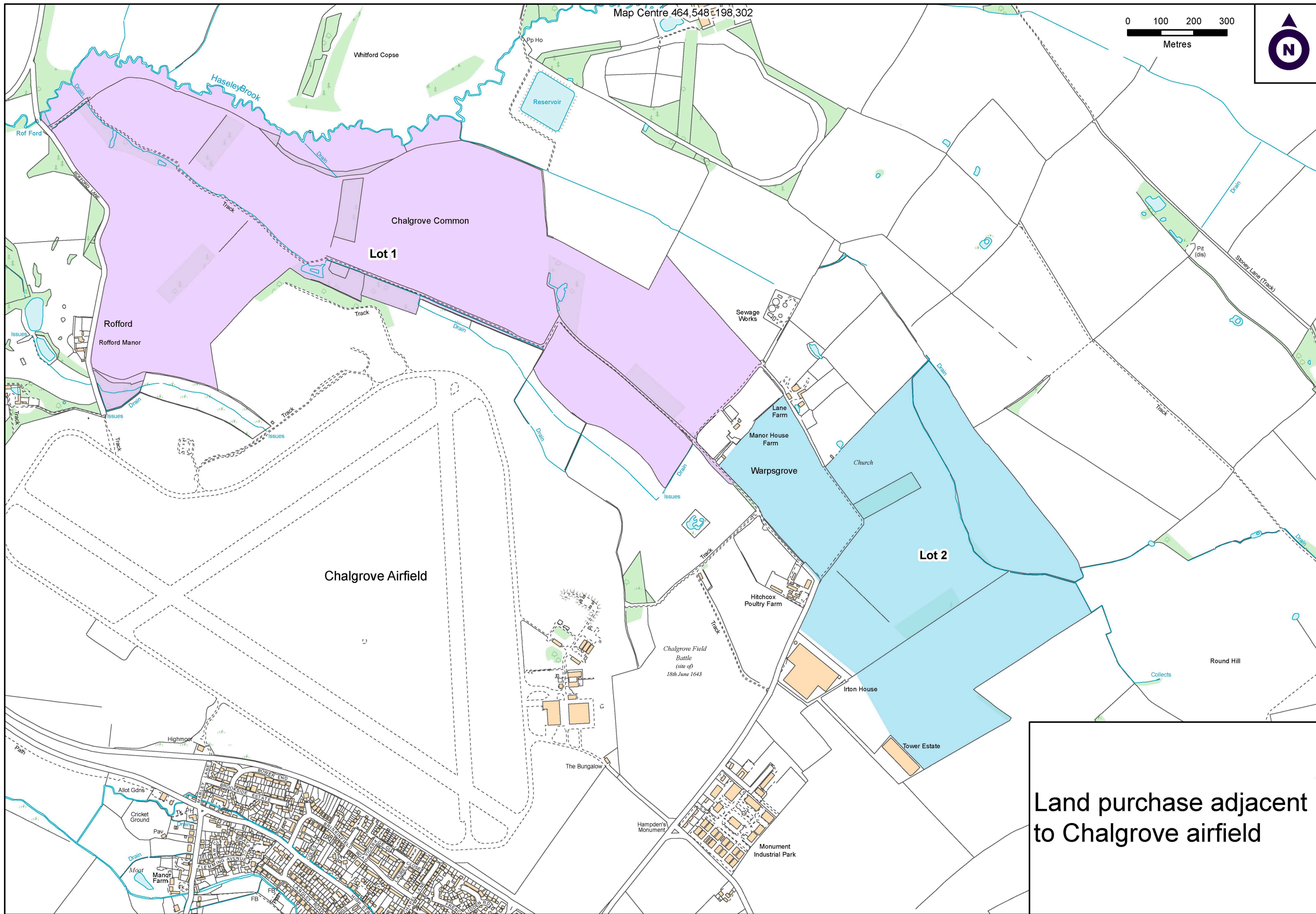
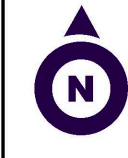
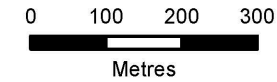
Information shown is correct to the best of Spatial Solutions Department's knowledge at date of issue. This map is reproduced from Ordnance Survey material with the permission of Ordnance Survey on behalf of the Controller of Her Majesty's Stationery Office. © Crown Copyright. Unauthorised reproduction infringes Crown copyright and may lead to prosecution or civil proceedings. Homes and Communities Agency GD 100024393

TITLE
**Wallis
Chalgrove
Oxfordshire**

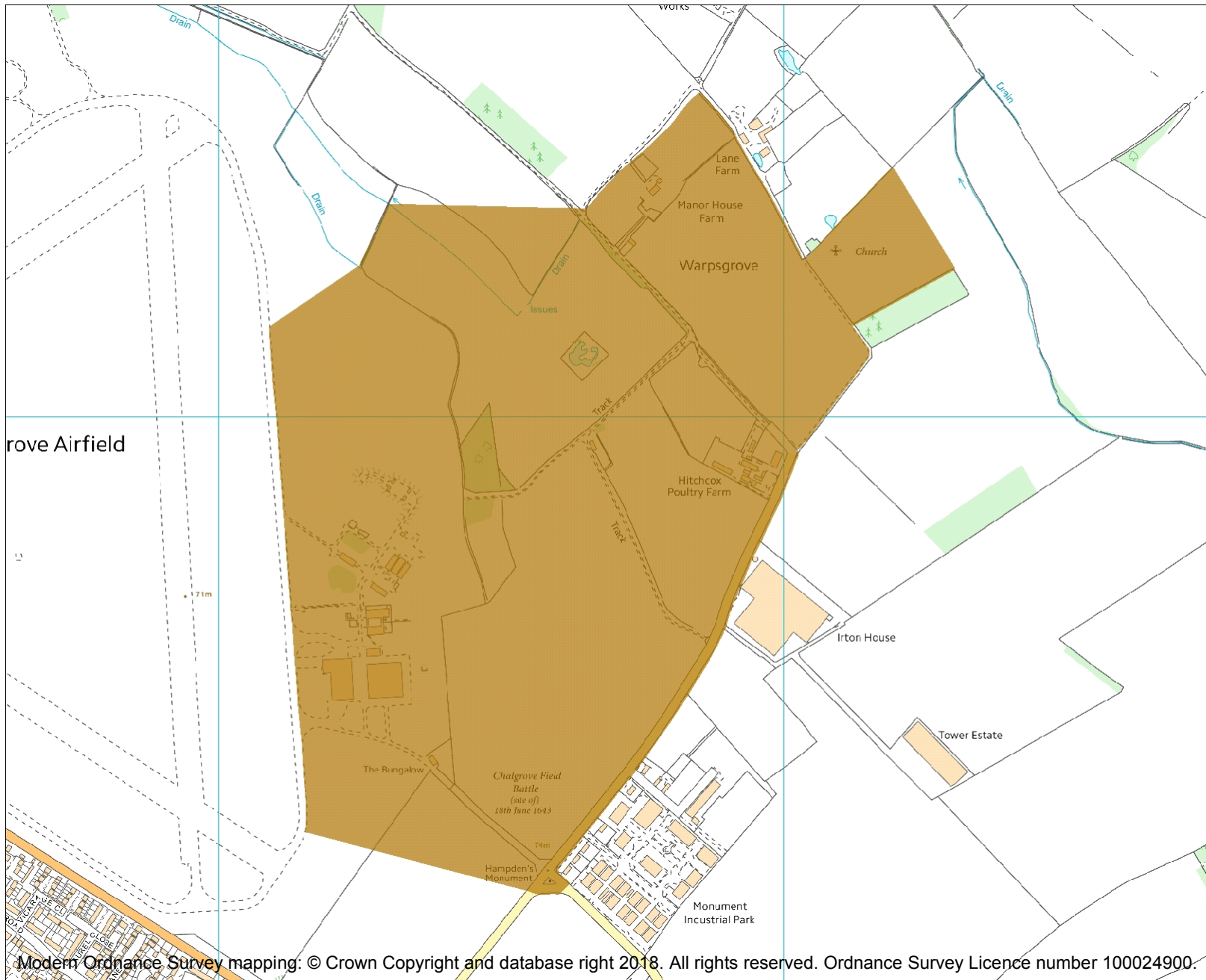


ITP NO LEGP-ACQ-63		PARCEL REF 17324	
DRG NO 31559_001	DATE 03/05/2019	SCALE 1:12,000	SIZE A3
PURPOSE OF ISSUE	REV.	DATE	INITIALS

Map Centre 464,548 198,302



Land purchase adjacent to Chalgrove airfield



Heritage Category:
Battlefield

County: Oxfordshire
 District: South Oxfordshire
 Parish: Chalgrove

Each official record of a registered battlefield contains a map. The map here has been translated from the official map and that process may have introduced inaccuracies. Copies of maps that form part of the official record can be obtained from Historic England.

This map was delivered electronically and when printed may not be to scale and may be subject to distortions. The map and grid references are for identification purposes only and must be read in conjunction with other information in the record.

Grid Reference: SU6469597865
Map Scale: 1:10000
Print Date: 18 July 2019

Modern Ordnance Survey mapping. © Crown Copyright and database right 2018. All rights reserved. Ordnance Survey Licence number 100024900.

This is an A4 sized map and should be printed full size at A4 with no page scaling set.

Number: 1000006_2
Name: Battle of Chalgrove 1643

