



Public Health
England

Protecting and improving the nation's health

Suspected and laboratory confirmed reported norovirus outbreaks in hospitals (England) and norovirus laboratory reports (England and Wales): weeks 40 to 43, 2019

Health Protection Report
Volume 14 Number 2
28 January 2020

Please note the [Hospital Norovirus Outbreak Reporting System website](#) was relaunched on Monday 7 October 2019 after going offline in May 2019. During this time data on hospital outbreaks was manually collated.

HNORS users have been encouraged to retrospectively report any outbreaks which may have occurred during this period, to ensure ascertainment is consistent with the period prior to HNORS going offline.

Suspected and laboratory confirmed reported norovirus outbreaks in hospitals: outbreaks occurring in weeks 40 to 43, 2019 (England)

There were seven reported outbreaks which occurred between weeks 40 and 43 2019, six of which (86 per cent) led to ward/bay closures or restrictions to admissions and four of which (57 per cent) were recorded as laboratory confirmed due to norovirus. From week 01 (week beginning 31 December 2018) to week 43 (week beginning 21 October 2019), 187 outbreaks have been reported. Eighty-seven percent (163) of reported outbreaks resulted in ward/bay closures or restrictions to admissions and seventy-five per cent (140) were laboratory confirmed as due to norovirus.

Suspected and laboratory-confirmed reported norovirus outbreaks in hospitals in England, with regional breakdown: outbreaks occurring in weeks 01-43 2019

PHE Centre	Outbreaks between weeks 40-43/2019			Outbreaks between weeks 01-43/2019		
	Outbreaks	Ward/bay closure †	Lab confirmed	Outbreaks	Ward/bay closure †	Lab confirmed
East of England	-	-	-	-	-	-
East Midlands	-	-	-	14	14	8
London	-	-	-	-	-	-
North East	2	2	1	26	23	23
North West	-	-	-	29	28	25
South East	1	1	1	30	30	27
South West	2	1	1	54	35	39
West Midlands	2	2	1	27	26	11
Yorkshire and Humberside	-	-	-	7	7	7
Total	7	6	1	187	163	140

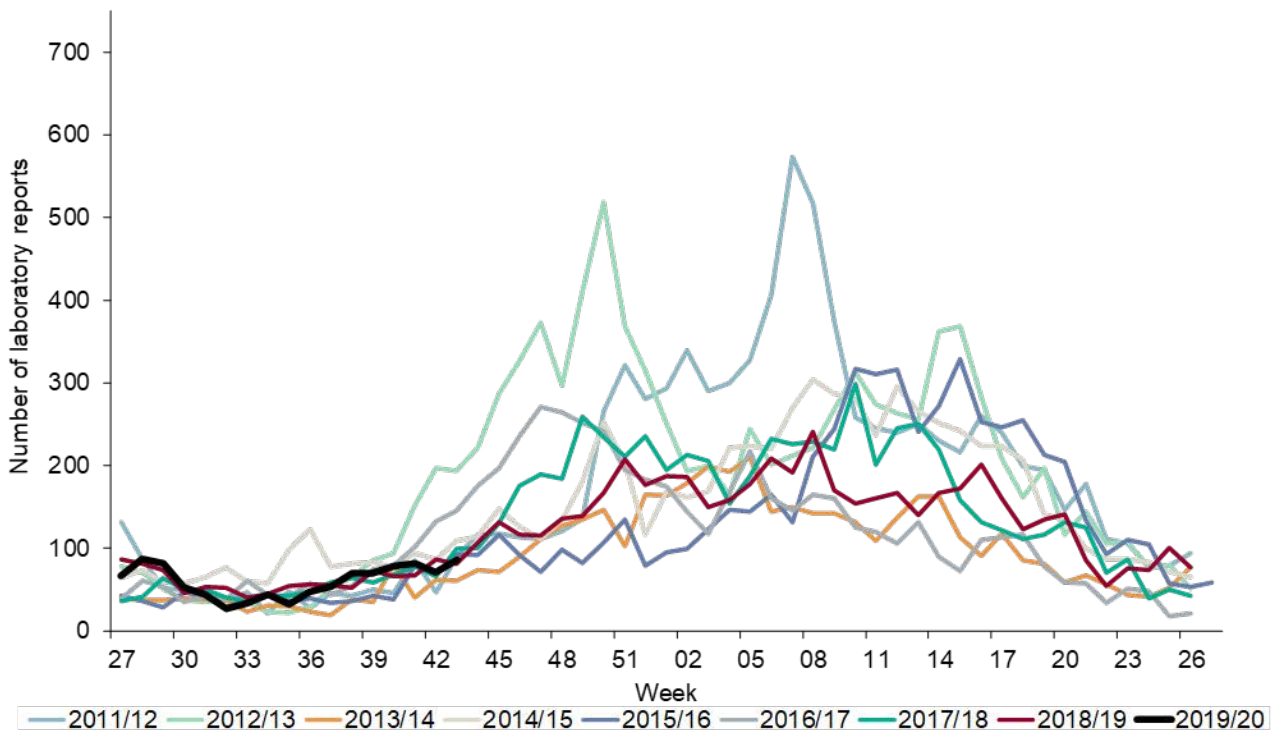
† Note: not all outbreaks result in whole wards closures, some closures are restricted to bays only

Norovirus laboratory reporting: data from SGSS (England and Wales)

From week 01, 2019 to week 43 2019 there were 4884 laboratory reports of norovirus. This is lower than the average number of laboratory reports for the same period in the five years between 2014 and 2018 (5382). Norovirus activity from weeks 40 to 43 of the 2019/20 season was lower than the five season average for this four week period (2014/15 to 2018/19).

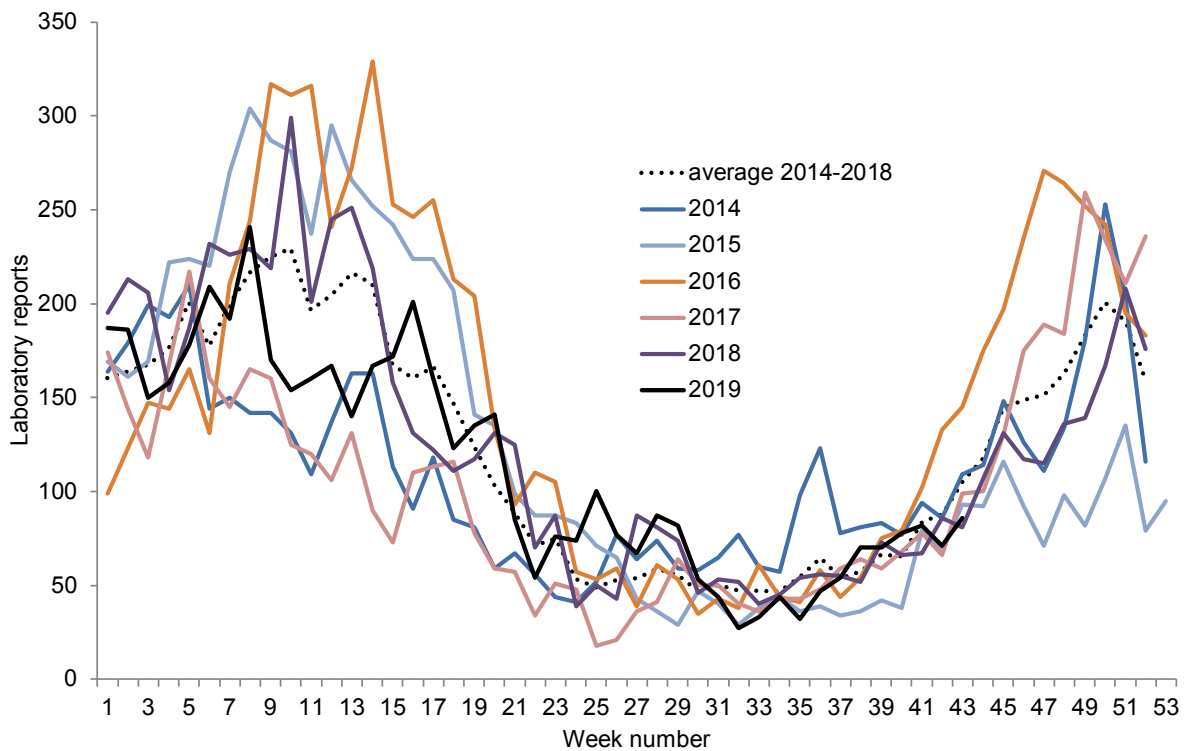
Note: Data from laboratory reporting are subject to a reporting delay and the number reported in the most recent weeks is likely to rise as further laboratory reports are received.

Figure 1 Seasonal comparison of laboratory reports of norovirus 2011/12-2019/20 (England and Wales)



Note. The norovirus season runs from week 27 in year 1 to week 26 in year 2, i.e. week 27 2019 – week 26 2020 July to June, in order to capture the winter peak in one season.

Figure 2: Current weekly norovirus laboratory reports compared to weekly mean reports 2014-2019 (England and Wales)



About Public Health England

Public Health England exists to protect and improve the nation's health and wellbeing, and reduce health inequalities. We do this through world-class science, research, knowledge and intelligence, advocacy, partnerships and the delivery of specialist public health services. We are an executive agency of the Department of Health, and are a distinct delivery organisation with operational autonomy to advise and support government, local authorities and the NHS in a professionally independent manner.

About Health Protection Report

Health Protection Report is a national public health bulletin for England and Wales, published by Public Health England. It is PHE's principal channel for the dissemination of laboratory data relating to pathogens and infections/communicable diseases of public health significance and of reports on outbreaks, incidents and ongoing investigations.

Public Health England, Wellington House, 133-155 Waterloo Road, London SE1 8UG
Tel: 020 7654 8000 www.gov.uk/phe
Twitter: @PHE_uk Facebook: www.facebook.com/PublicHealthEngland

Queries relating to this document should be directed to:
EEDD@phe.gov.uk

OGL

© Crown copyright 2020

You may re-use this information (excluding logos) free of charge in any format or medium, under the terms of the Open Government Licence v3.0. To view this licence, visit [OGL](https://www.ogil.io). Where we have identified any third party copyright information you will need to obtain permission from the copyright holders concerned.

Published: January 2020
PHE publications
gateway number: GW-1072

PHE supports the UN
Sustainable Development Goals



SUSTAINABLE DEVELOPMENT GOALS