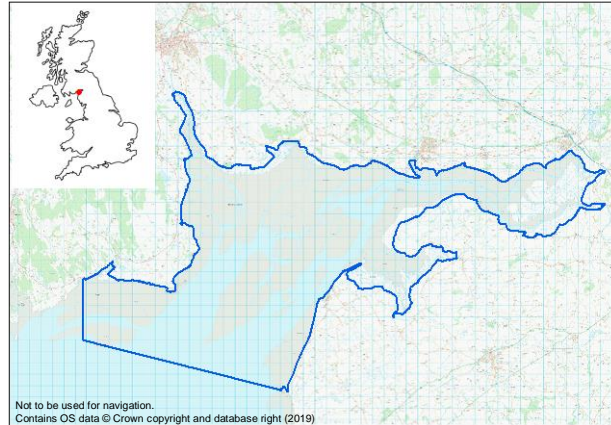


# Upper Solway Flats and Marshes SPA

## Description:

The diverse mix of intertidal habitats in the upper Solway Firth support internationally important numbers (the entirety of the Svalbard population) of overwintering barnacle geese (*Branta leucopsis*), bar-tailed godwit (*Limosa lapponica*), whooper swan (*Cygnus Cygnus*), and golden plover (*Pluvialis apricaria*) as part of an assemblage of wildfowl and waders which regularly contains 130,000 individuals through the winter.



## Qualifying features:

The site supports the following overwintering species: bar-tailed godwit; barnacle goose; golden plover; whooper swan; curlew (*Numenius arquata*), dunlin (*Calidris alpina alpina*), knot (*Calidris canutus*), oystercatcher (*Haematopus ostralegus*), pink-footed goose (*Anser brachyrhynchus*), pintail (*Anas acuta*), and redshank (*Tringa tetanus*). The site also supports on passage ringed plover (*Charadrius hiaticula*) and internationally important assemblage of waterfowl.

## Management:

None raised.

## Stakeholder Concerns:

None raised.

MPA: Upper Solway Flats and Marshes SPA				No. Stakeholders: 1 online			
Activity	Frequency	Duration	Participation	Intensity	Confidence	MPA Extent	Trend
Board sports	0	0	0	0	L	0	➔
Geophysical surveys	?	?	?	?	L	?	?
Motor boating	3	2	3	18	M	?	➔
Jetskis	3	2	2	12	M	?	⬆
Paddle sports	3	2	2	12	M	?	⬆
Parascending	0	0	0	0	H	0	⬆
Sailing (non-motorised)	3	4	4	48	H	?	⬆
SCUBA diving	0	0	0	0	L	0	➔
Swimming / Snorkelling	0	0	0	0	L	0	➔
Towed water sports	0	0	0	0	L	0	➔
Wildlife watching from the sea	0	0	0	0	L	0	➔
Bait collection	?	?	?	?	?	?	?
Beach recreation	0	0	0	0	L	0	➔
Coasteering	?	?	?	?	?	?	?
Land boarding	0	0	0	0	L	0	➔
Motorsports (quad bikes, motorbikes)	0	0	0	0	L	0	➔
Vehicle access (cars on foreshore)	2	?	?	?	M	2	?
Wildlife watching from the land	4	3	5	60	H	?	?
Drone use	1	?	?	?	L	2	?
Gliding (unpowered)	0	0	0	0	L	0	➔
Aircraft (powered)	1	?	?	?	L	2	?

#### KEY

FREQUENCY	DURATION	PARTICIPATION	INTENSITY	CONFIDENCE	EXTENT	TREND
4 Regular/daily	4 >8 hours	6 >100	45-96 High	H High	2 Whole MPA (solid)	⬆ Increase
3 Regular/weekends	3 4-8 hours	5 51-100	24-40 Med-high	M Medium	1 Part of MPA (shaded)	➔ Stay the same
2 Seasonally	2 2-4 hours	4 21-50	9-20 Low-med	L Low	0 Does not occur	⬇ Decrease
1 Sporadically	1 <2 hours	3 11-20	1-8 Low	? Data missing	? Data missing	? Data missing
0 Does not occur	0 Does not occur	2 6-10	0 Does not occur			
? Data missing	? Data missing	1 1-5	? Data missing			
		0 Does not occur				
		? Data missing				



Marine  
Management  
Organisation

# Non-licensable activities which occur in and around the Upper Solway Flats and Marshes SPA

Not to be used for navigation.

Contains OS data © Crown copyright and database right (2019)

## Water based activities

- Jetskis
- Paddle sports

## Land based activities

- Bait collection
- Beach recreation
- Land boarding
- Vehicle access (cars on foreshore)
- Wildlife watching from the land

## Supplementary data

- General boating areas (RYA)
- MPA boundary

