

Air Quality and Dust Monitoring Monthly Report – October 2019

Royal Borough of Kensington and Chelsea



SKANSKA



Department for Transport

High Speed Two (HS2) Limited has been tasked by the Department for Transport (DfT) with managing the delivery of a new national high speed rail network. It is a non-departmental public body wholly owned by the DfT.

High Speed Two (HS2) Limited,
Two Snowhill
Snow Hill Queensway
Birmingham B4 6GA

Telephone: 08081 434 434

General email enquiries: HS2enquiries@hs2.org.uk

Website: www.gov.uk/hs2

A report prepared by Costain Skanska on behalf of HS2 Ltd.

High Speed Two (HS2) Limited has actively considered the needs of blind and partially sighted people in accessing this document. The text will be made available in full on the HS2 website. The text may be freely downloaded and translated by individuals or organisations for conversion into other accessible formats. If you have other needs in this regard please contact High Speed Two (HS2) Limited.

© High Speed Two (HS2) Limited, 2019, except where otherwise stated.

Copyright in the typographical arrangement rests with High Speed Two (HS2) Limited.

This information is licensed under the Open Government Licence v2.0. To view this licence, visit www.nationalarchives.gov.uk/doc/open-government-licence/version/2 **OGL** or write to the Information Policy Team, The National Archives, Kew, London TW9 4DU, or e-mail: psi@nationalarchives.gsi.gov.uk. Where we have identified any third-party copyright information you will need to obtain permission from the copyright holders concerned.



Printed in Great Britain on paper containing at least 75% recycled fibre.

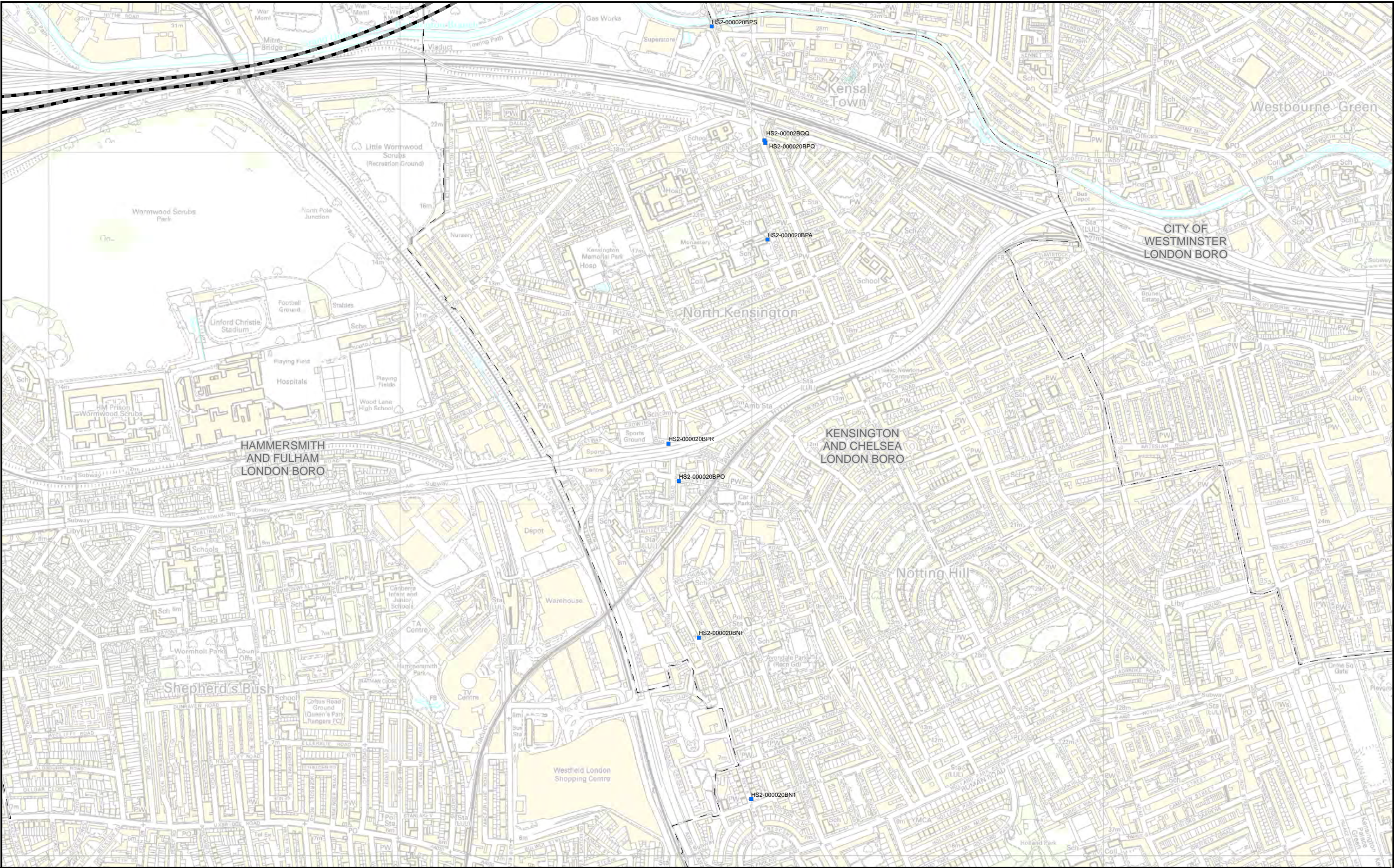
Monthly Summary

- 1.1.1 This Summary Report is published in fulfilment of commitments detailed in the High Speed Rail (London-West Midlands) Environmental Minimum Requirements, Annex 1: Code of Construction Practice, for the nominated undertaker to present the results of air quality monitoring undertaken in the Royal Borough of Kensington and Chelsea (RBKC) during September 2019.
- 1.1.2 Figure 1 in Appendix A indicates the current air quality monitoring locations.
- 1.1.3 This summary should be read in conjunction with the overview monitoring report available from www.gov.uk/government/collections/monitoring-the-environmental-effects-of-hs2, which highlights: the applicable standards and guidance, as well as the air quality and dust monitoring methodologies to be implemented by nominated undertakers throughout construction.
- 1.1.4 There are no current worksites located within the RBKC. Therefore, no dust monitoring has been carried out.
- 1.1.5 Diffusion tube monitoring of Nitrogen Dioxide (NO₂) was undertaken at seven (7) locations in September 2019, around highways within the RBKC as part of the management of air quality where significant effects may occur as a result of the scheme.
- 1.1.6 Diffusion tube monitoring results are provided from the laboratory analysis, and therefore still require various analysis and adjustments to be undertaken. Final corrected results will be presented and described in the annual report. However, based on the results to date, no unexpected values were recorded during the monitoring period.
- 1.1.7 NO₂ monitoring locations and results are presented in Appendix B, Table 1, together with the 2019 running mean.
- 1.1.8 There were no (0) complaints received, relating to air quality, during this monitoring period (October 2019).

Appendix A – Worksites and Monitoring Locations


Figure 1: Current monitoring locations within the RBKC






- Legend**
- Route in tunnel
 - Route on surface
 - Diffusion tube monitoring location

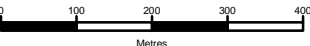
Figure Number
Figure Name
Monitoring locations in RBKC
Royal Borough of Kensington and Chelsea



HS2 Ltd accept no responsibility for any circumstances, which arise from the reproduction of this map after alteration, amendment or abbreviation or if it is issued in part or issued incomplete in any way.



Scale at A3: 10,000



0 100 200 300 400
Metres

© Crown copyright and database rights 2016.
Ordnance Survey Licence Number 100049190.

Map Number: 1EW02-CSJ-EV-REP-S000-000017_appA_fig1.pdf Date: 13/09/18

Appendix B – Air Quality Monitoring Results

Table 1: NO₂ monitoring locations around highways, NO₂ concentrations and monthly monitoring results with running mean for 2019 (µg/m³)

Monitoring Site ID	Location description	Coordinates (X, Y)	Jan	Feb	Mar	Apr	May	Jun	Jul	Aug	Sep	Oct	Nov	Dec	Mean ¹
HS2-000020BN1	Sign post on St Ann's Villas	523998, 180160	52	57	45	43	37	42	40	43	45				45
HS2-000020BNF	Unsuitable for long vehicles sign on St Ann's Villas	523849, 180620	Tube missing												
HS2-000020BPO	Lamp post off Silchester Road	523792, 181066	51	44	38	40	Tube missing	34	31	31	32				38
HS2-000020BPR	Lamp post at junction of Crowthorne Road and Bramley Road	523763, 181172	51	59	46	43	39	38	38	41	38				44
HS2-000020BPS	Lamp post by fence on B450 Ladbroke Grove, south of A404 Harrow Road	523886, 182358	49	64	48	54	41	45	45	43	46				48
HS2-000020BQQ	Lamp post along Ladbroke Grove, near shops and bus stop at Trevorton Road junction	524036, 182034	62	54	52	49	46	49	45	40	50				50

¹ Note: to aid interpretation and conform with best practice, the monthly measurements in this table are reported rounded to the nearest whole number. The annual mean presented here is calculated based on laboratory data to 4 significant figures, rounded to a whole number, and therefore may differ slightly to a mean derived from averaging the rounded monthly measurements in the table.

Monitoring Site ID	Location description	Coordinates (X, Y)	Jan	Feb	Mar	Apr	May	Jun	Jul	Aug	Sep	Oct	Nov	Dec	Mean ¹
HS2-000020BPA	Triplicate site at Sion Manning School, St. Charles' square, next to the North Kensington urban background automatic monitoring stations	524045, 181752	43	43	31	27	25	22	19	24	27				29