

Air Quality and Dust Monitoring Monthly Report – October 2019

London Borough of Hillingdon



SKANSKA



Department for Transport

High Speed Two (HS2) Limited has been tasked by the Department for Transport (DfT) with managing the delivery of a new national high speed rail network. It is a non-departmental public body wholly owned by the DfT.

High Speed Two (HS2) Limited,
Two Snowhill
Snow Hill Queensway
Birmingham B4 6GA

Telephone: 08081 434 434

General email enquiries: HS2enquiries@hs2.org.uk

Website: www.gov.uk/hs2

A report prepared by Costain Skanska on behalf of HS2 Ltd.

High Speed Two (HS2) Limited has actively considered the needs of blind and partially sighted people in accessing this document. The text will be made available in full on the HS2 website. The text may be freely downloaded and translated by individuals or organisations for conversion into other accessible formats. If you have other needs in this regard please contact High Speed Two (HS2) Limited.

© High Speed Two (HS2) Limited, 2019, except where otherwise stated.

Copyright in the typographical arrangement rests with High Speed Two (HS2) Limited.

This information is licensed under the Open Government Licence v2.0. To view this licence, visit www.nationalarchives.gov.uk/doc/open-government-licence/version/2 **OGL** or write to the Information Policy Team, The National Archives, Kew, London TW9 4DU, or e-mail: psi@nationalarchives.gsi.gov.uk. Where we have identified any third-party copyright information you will need to obtain permission from the copyright holders concerned.



Printed in Great Britain on paper containing at least 75% recycled fibre.

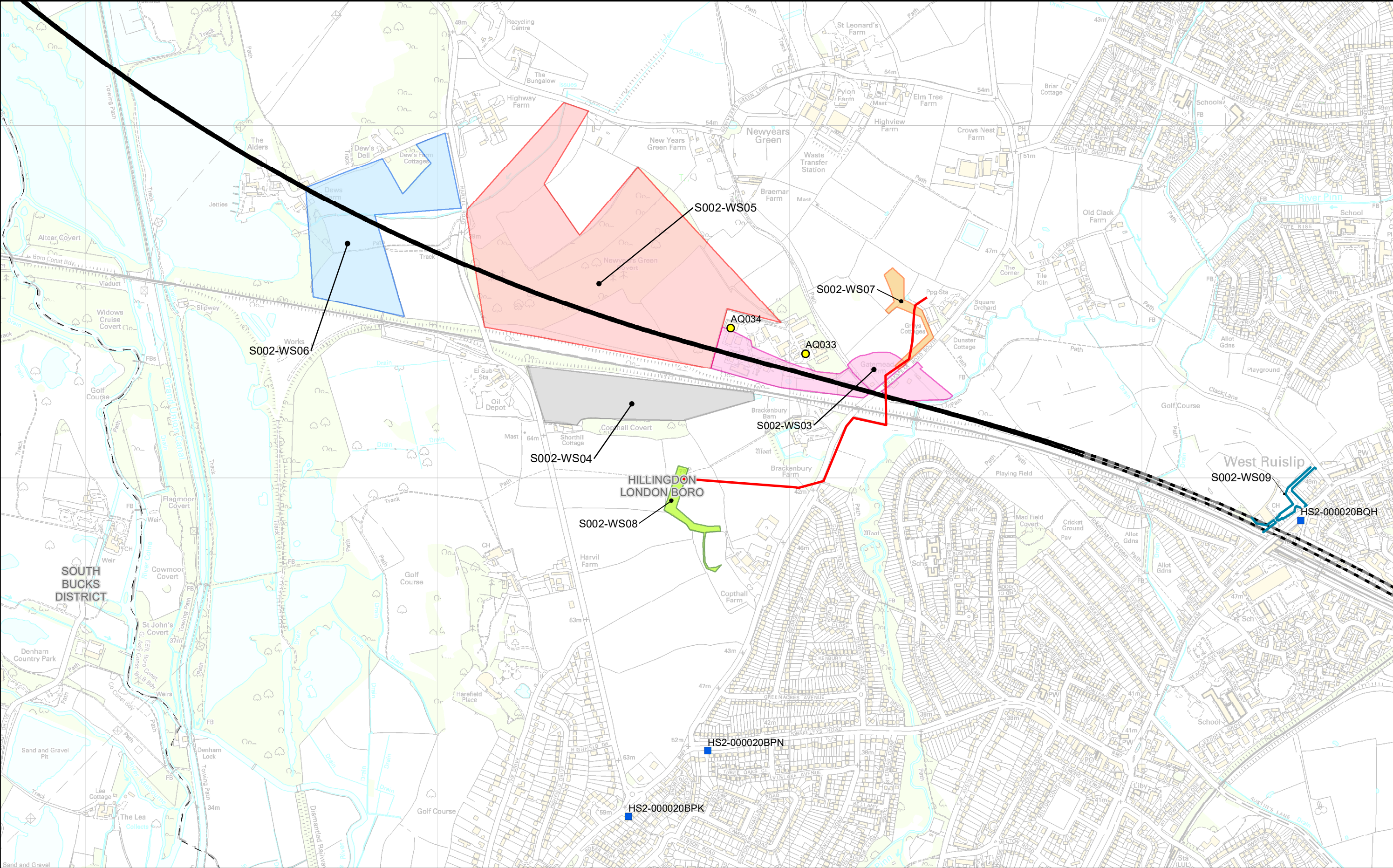
Monthly Summary

- 1.1.1 This Summary Report is published in fulfilment of commitments detailed in the High Speed Rail (London-West Midlands) Environmental Minimum Requirements, Annex 1: Code of Construction Practice, for the nominated undertaker to present the results of air quality and dust monitoring undertaken in the London Borough of Hillingdon (LBH) during September and October 2019 respectively.
- 1.1.2 Figure 1 to Figure 4 in Appendix A indicate the current worksites, together with air quality monitoring locations.
- 1.1.3 This summary should be read in conjunction with the overview monitoring report available from www.gov.uk/government/collections/monitoring-the-environmental-effects-of-hs2, which highlights: the applicable standards and guidance, as well as the air quality and dust monitoring methodologies to be implemented by nominated undertakers throughout construction.
- 1.1.4 The current phase of works commenced within the LBH during May 2018 and are expected to be completed by November 2019. The current worksites, as presented in Appendix A, Figure 1, include:
- 18' and 48' gas pipeline diversions, advanced planting and habitat creation, worksite ref. S002-WS05;
 - Merck Sharpe Dohme, demolition works and new access road construction, completed worksite ref. S002-WS03;
 - Utility diversions at Breakspear Road South; worksites ref. S002-WS07 and S002-WS08;
 - Utility diversions at Copthall North, worksite ref. S002-WS06 and South, worksite ref. S002-WS04; and
 - Haul Road construction and site compound and vegetation clearance at West Ruislip Golf Course site, worksite ref. S002-WS09.
- 1.1.5 One (1) dust monitor was installed around worksite S002-WS03, where limited demolition works are underway. This site returned a high dust risk rating.
- 1.1.6 The dust monitoring location and results are presented in Appendix B, Table 1 together with line charts of monthly data from the dust monitor. All continuous dust monitoring is undertaken using indicative monitors. Despite being Environment Agency (MCERTS) certified, indicative monitors carry a higher level of uncertainty than reference monitors, and therefore cannot be strictly compared with Air Quality Standards for human health and the environment. The purpose of the monitoring undertaken is to ensure the effectiveness of the on-site mitigation.
- 1.1.7 The trigger level of 190 µg/m³, over a 1-hour period, in accordance with the updated guidance document '*Guidance on Monitoring in the Vicinity of Demolition and Construction Sites – October 2018*' has been applied.

- 1.1.8 There were no (0) dust trigger alerts recorded during this monitoring period (October 2019). All results were in line with expected ranges.
- 1.1.9 Diffusion tube monitoring of Nitrogen Dioxide (NO₂) was undertaken at eleven (11) locations in September 2019, around highways within the LBH as part of the management of air quality where significant effects may occur as a result of the scheme.
- 1.1.10 Diffusion tube monitoring results are provided from the laboratory analysis, and therefore still require various analysis and adjustments to be undertaken. Final corrected results will be presented and described in the annual report. However, based on the results to date, no unexpected values were recorded during the monitoring period.
- 1.1.11 NO₂ monitoring locations and results are presented in Appendix C, Table 2, together with the 2019 running mean.
- 1.1.12 There were no (0) complaints received, relating to air quality, during this monitoring period (October 2019).

Appendix A – Worksites and Monitoring Locations

Figure 1 to Figure 4: Current monitoring locations within the LBH

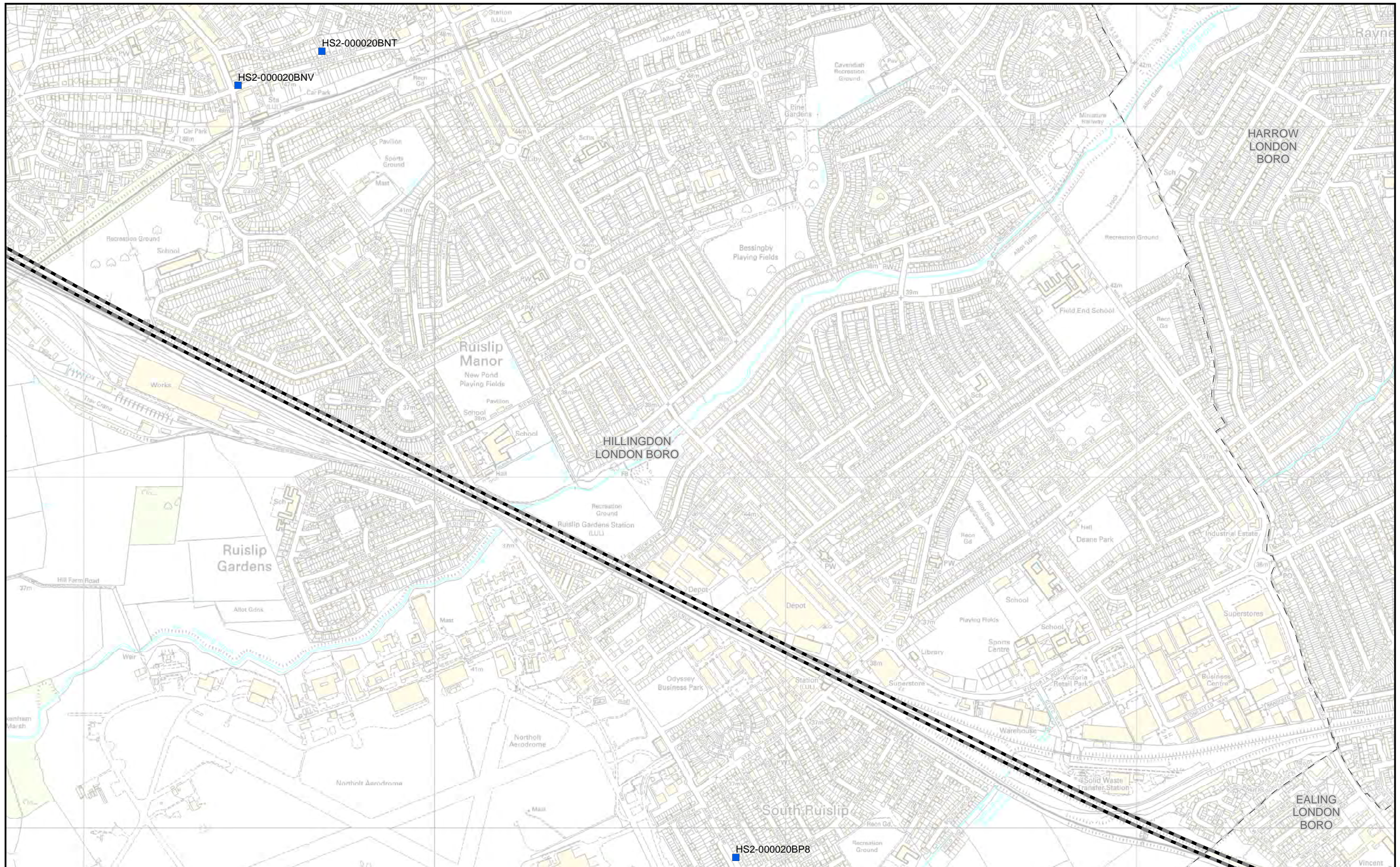


Legend		Figure Number	 HS2 Ltd accept no responsibility for any circumstances, which arise from the reproduction of this map after alteration, amendment or abbreviation or if it is issued in part or issued incomplete in any way.
 Route in tunnel	 Copthall North worksite	Figure Name	
 Route on surface	 Copthall South worksite	Worksites and Monitoring locations in LBH (sheet 1)	
 Dust monitoring location	 18' and 48' gas pipeline diversions		London Borough of Hillingdon
 Diffusion tube monitoring location	 Merck Sharpe Dhome worksite		
 Trunk Main Diversion Route	 Utility Diversion worksite north		
 West Ruislip Golf Course	 Utility Diversion worksite south		

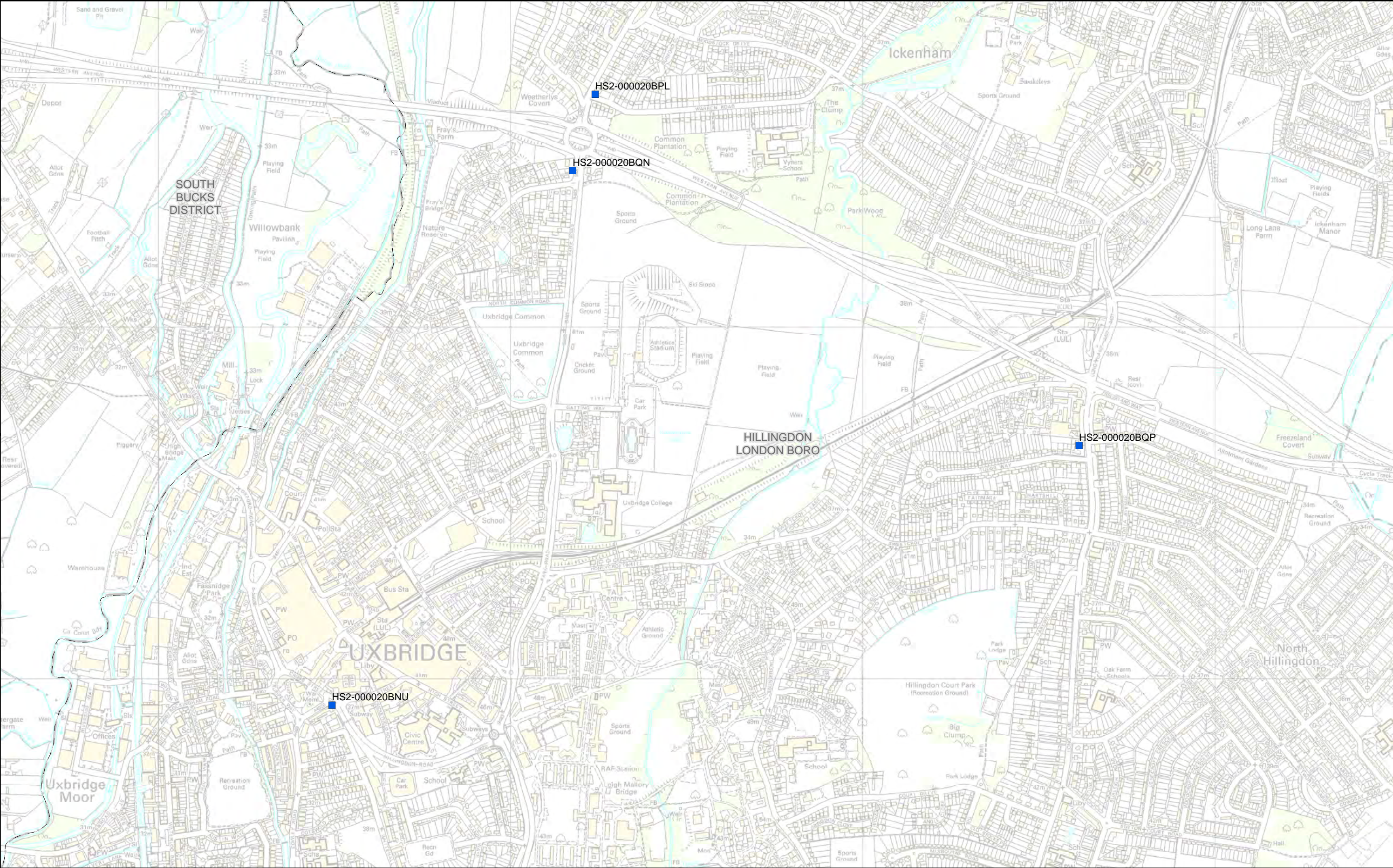
Scale at A3: 10,000

0 100 200 300 400 Metres

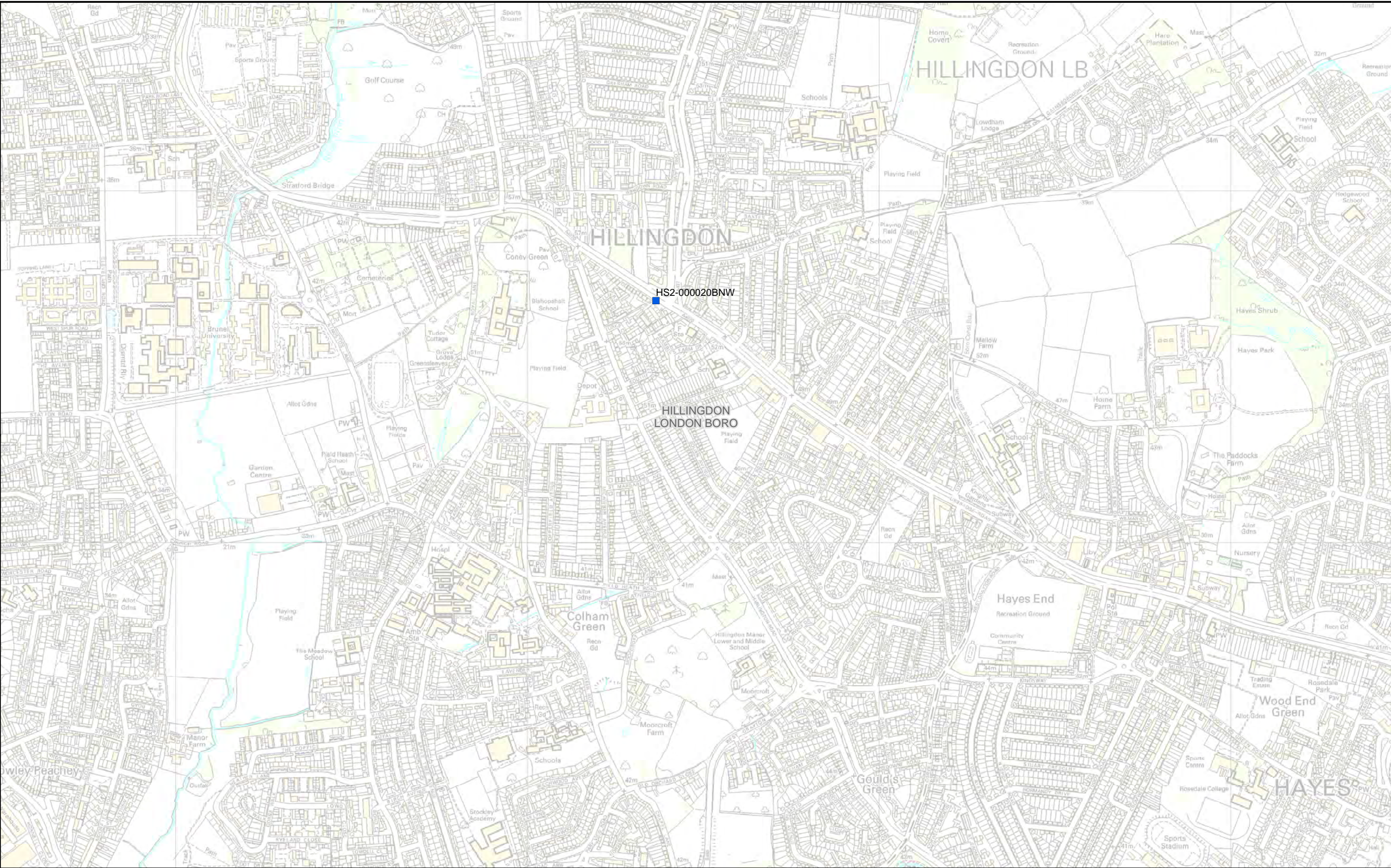
© Crown copyright and database rights 2016.
Ordnance Survey Licence Number 100049190.
Map Number: 1EW02-CSJ-EV-REP-S000-000017_appA_fig1.pdf Date: 09/04/19



Legend — Route in tunnel — Route on surface ■ Diffusion tube monitoring location	Figure Number	 HS2 Ltd accept no responsibility for any circumstances, which arise from the reproduction of this map after alteration, amendment or abbreviation or if it is issued in part or issued incomplete in any way.
	Figure Name Worksites and Monitoring locations in LBH (sheet 2)	
	London Borough of Hillingdon	Scale at A3: 10,000 0 100 200 300 400 Metres © Crown copyright and database rights 2016. Ordnance Survey Licence Number 100049190. Map Number: 1EW02-CSJ-EV-REP-S000-000017_appA_fig1.pdf Date: 13/07/18



Legend — Route in tunnel — Route on surface ■ Diffusion tube monitoring location	Figure Number	 HS2 Ltd accept no responsibility for any circumstances, which arise from the reproduction of this map after alteration, amendment or abbreviation or if it is issued in part or issued incomplete in any way. Scale at A3: 10,000 0 100 200 300 400 Metres
	Figure Name	
	Worksites and Monitoring locations in LBH (sheet 3)	
London Borough of Hillingdon		
© Crown copyright and database rights 2016. Ordnance Survey Licence Number 100049190. Map Number: 1EW02-CSJ-EV-REP-S000-000017_appA_fig1.pdf Date: 12/07/18		



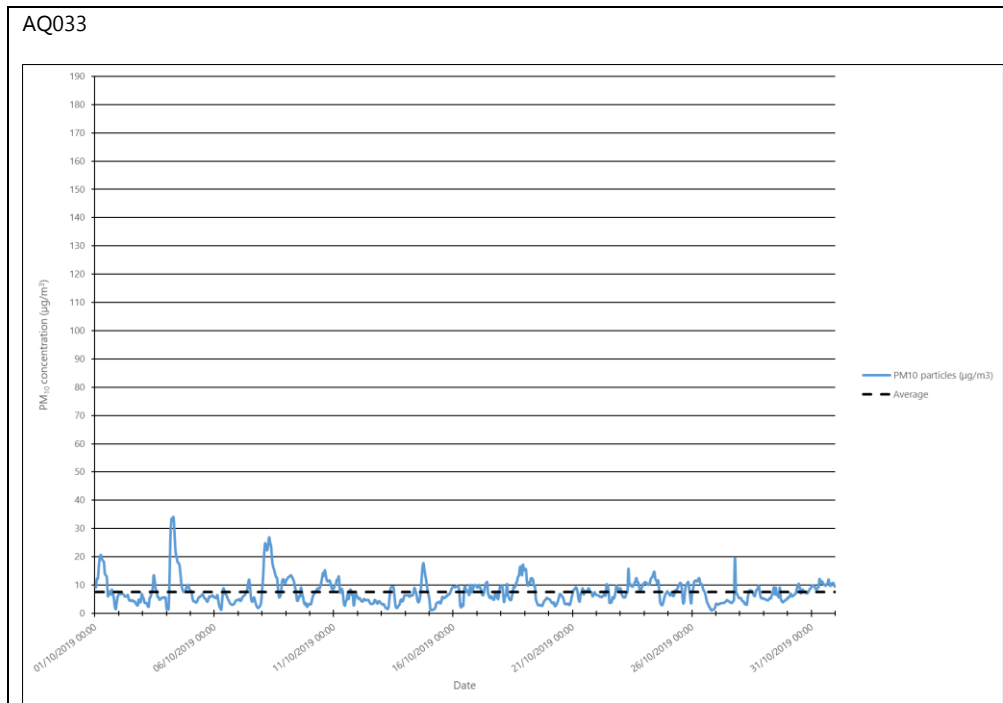
Legend Route in tunnel Route on surface Diffusion tube monitoring location	Figure Number	 HS2 Ltd accept no responsibility for any circumstances, which arise from the reproduction of this map after alteration, amendment or abbreviation or if it is issued in part or issued incomplete in any way. Scale at A3: 10,000 0 100 200 300 400 Metres
	Figure Name	
	Worksites and Monitoring locations in LBH (sheet 4)	London Borough of Hillingdon

Appendix B – Dust Monitoring Results

Table 1: Dust monitoring locations and October 2019 Results

Monitoring site ID	Coordinates (X,Y)	Location description	Dust risk rating for site	Monitoring site active during period	Change to site since previous period report	Mean 1-hour PM ₁₀ concentration (µg/m ³)	Minimum 1-hour PM ₁₀ concentration (µg/m ³)	Maximum 1-hour PM ₁₀ concentration (µg/m ³)	Number of 1-hour periods exceeding trigger level of 190 µg/m ³	Data capture (%)
AQ033	507045, 187352	Merck Sharp Dohme, Building 24	H	Yes	Y	7.6	1.1	34.1	0	100.0

Figure 1: Construction dust 1-hour mean indicative PM₁₀ concentration for dust monitors



Appendix C – Air Quality Monitoring Results

Table 2: NO₂ monitoring locations around highways, NO₂ concentrations and monthly monitoring results with running mean for 2019 (µg/m³)

Monitoring Site ID	Location description	Coordinates (X, Y)	Jan	Feb	Mar	Apr	May	Jun	Jul	Aug	Sep	Oct	Nov	Dec	Mean ¹
HS2-000020BNT	Lamp post on Pembroke Road	509678, 187214	34	41	28	26	20	23	17	22	25				26
HS2-000020BNU	Cowley Road sign post at junction with Hillingdon Road	505492, 183926	47	49	41	38	39	43	36	46	46				43
HS2-000020BNV	High Street sign post at junction with Pembroke Road	509439, 187117	46	47	38	45	27	39	34	35	37				39
HS2-000020BNW	Signpost on A4020 Uxbridge Road at junction with Long Lane	507365, 182687	54	47	41	50	38	41	36	32	42				42
HS2-000020BPK	Lamp post in crescent off Swakeleys Road	506542, 186037	45	48	39	31	33	28	34	33	35				36
HS2-000020BPL	Warren Road sign post on corner of Swakeleys Road and Warren Road	506240, 185660	43	61	Tube missing	30	37	36	38	40	38				40
HS2-000020BPN	Lamp post on B467	506767, 186224	39	No data	36	31	32	28	26	27	31				31
HS2-000020BQH	Lamp post on High Road Ickenham	508451, 186879	51	49	42	38	35	31	35	36	38				39

¹ Note: to aid interpretation and conform with best practice, the monthly measurements in this table are reported rounded to the nearest whole number. The annual mean presented here is calculated based on laboratory data to 4 significant figures, rounded to a whole number, and therefore may differ slightly to a mean derived from averaging the rounded monthly measurements in the table.

Monitoring Site ID	Location description	Coordinates (X, Y)	Jan	Feb	Mar	Apr	May	Jun	Jul	Aug	Sep	Oct	Nov	Dec	Mean ¹
HS2-000020BQN	Lamp post on Park Road	506176, 185444	45	54	54	52	40	48	41	37	47				46
HS2-000020BQP	Sign post on Long Lane	507614, 184663	43	47	43	48	38	45	38	34	44				42
HS2-000020BP8	Triplicate site at South Ruislip roadside automatic monitoring station	510858, 184916	46	44	34	36	29	37	Tubes missing		39				38